



Full wwPDB X-ray Structure Validation Report ⓘ

Feb 28, 2014 – 08:33 AM GMT

PDB ID : 2C3Y
Title : CRYSTAL STRUCTURE OF THE RADICAL FORM OF PYRUVATE:FERREDOXIN OXIDOREDUCTASE FROM DESULFOVIBRIO AFRICANUS
Authors : Cavazza, C.; Contreras-Martel, C.; Pieulle, L.; Chabriere, E.; Hatchikian, E.C.; Fontecilla-Camps, J.C.
Deposited on : 2005-10-13
Resolution : 1.93 Å(reported)

This is a full wwPDB validation report for a publicly released PDB entry.
We welcome your comments at validation@mail.wwpdb.org
A user guide is available at <http://wwpdb.org/ValidationPDFNotes.html>

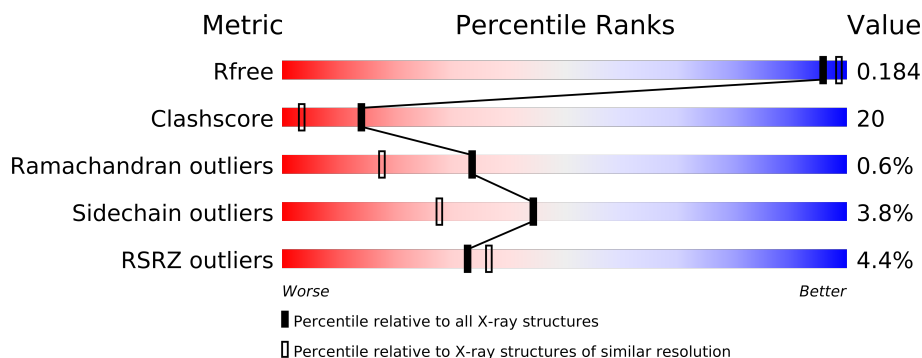
The following versions of software and data (see [references](#)) were used in the production of this report:

MolProbity : 4.02b-467
Mogul : 1.15 2013
Xtriage (Phenix) : dev-1323
EDS : stable22639
Percentile statistics : 21963
Refmac : 5.8.0049
CCP4 : 6.3.0 (Settle)
Ideal geometry (proteins) : Engh & Huber (2001)
Ideal geometry (DNA, RNA) : Parkinson et. al. (1996)
Validation Pipeline (wwPDB-VP) : stable22683

1 Overall quality at a glance



The reported resolution of this entry is 1.93 Å.

Percentile scores (ranging between 0-100) for global validation metrics of the entry are shown in the following graphic. The table shows the number of entries on which the scores are based.



Metric	Whole archive (#Entries)	Similar resolution (#Entries, resolution range(Å))
R_{free}	66092	2024 (1.96-1.92)
Clashscore	79885	2281 (1.96-1.92)
Ramachandran outliers	78287	2255 (1.96-1.92)
Sidechain outliers	78261	2255 (1.96-1.92)
RSRZ outliers	66119	2024 (1.96-1.92)

The table below summarises the geometric issues observed across the polymeric chains and their fit to the electron density. The red, orange, yellow and green segments on the lower bar indicate the fraction of residues that contain outliers for ≥ 3 , 2, 1 and 0 types of geometric quality criteria. The upper red bar (where present) indicates the fraction of residues that have poor fit to the electron density.

Mol	Chain	Length	Quality of chain
1	A	1231	
1	B	1231	

The following table lists non-polymeric compounds that are outliers for geometric or electron-density-fit criteria:

Mol	Type	Chain	Res	Geometry	Electron density
5	CA	A	2238	-	X
6	CO2	A	2239	-	X
6	CO2	B	2239	-	X

2 Entry composition i

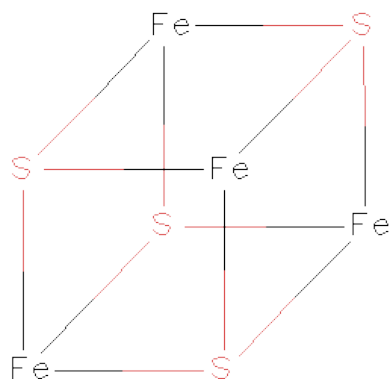
There are 7 unique types of molecules in this entry. The entry contains 20782 atoms, of which 0 are hydrogen and 0 are deuterium.

In the tables below, the ZeroOcc column contains the number of atoms modelled with zero occupancy, the AltConf column contains the number of residues with at least one atom in alternate conformation and the Trace column contains the number of residues modelled with at most 2 atoms.

- Molecule 1 is a protein called PYRUVATE-FERREDOXIN OXIDOREDUCTASE.

Mol	Chain	Residues	Atoms					ZeroOcc	AltConf	Trace
1	A	1231	Total	C	N	O	S	0	0	0
			9347	5920	1591	1778	58			
1	B	1230	Total	C	N	O	S	0	0	0
			9341	5914	1595	1773	59			

- Molecule 2 is IRON/SULFUR CLUSTER (three-letter code: SF4) (formula: Fe₄S₄).



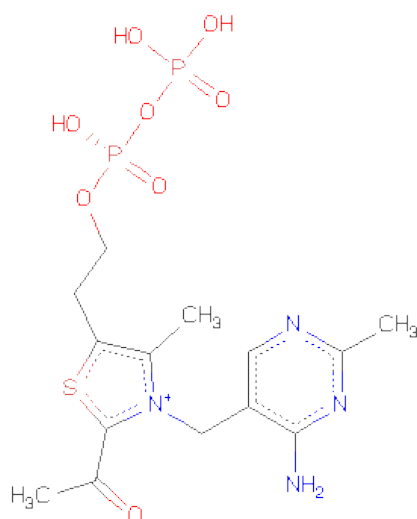
Mol	Chain	Residues	Atoms			ZeroOcc	AltConf
2	A	1	Total	Fe	S	0	0
			8	4	4		
2	A	1	Total	Fe	S	0	0
			8	4	4		
2	A	1	Total	Fe	S	0	0
			8	4	4		
2	B	1	Total	Fe	S	0	0
			8	4	4		

Continued on next page...

Continued from previous page...

Mol	Chain	Residues	Atoms			ZeroOcc	AltConf
2	B	1	Total	Fe	S	0	0
			8	4	4		
2	B	1	Total	Fe	S	0	0
			8	4	4		

- Molecule 3 is 2-ACETYL-THIAMINE DIPHOSPHATE (three-letter code: HTL) (formula: $C_{14}H_{21}N_4O_8P_2S$).



Mol	Chain	Residues	Atoms						ZeroOcc	AltConf
3	A	1	Total	C	N	O	P	S	0	0
			29	14	4	8	2	1		
3	B	1	Total	C	N	O	P	S	0	0
			29	14	4	8	2	1		

- Molecule 4 is MAGNESIUM ION (three-letter code: MG) (formula: Mg).

Mol	Chain	Residues	Atoms		ZeroOcc	AltConf
4	B	1	Total	Mg	0	0
			1	1		
4	A	1	Total	Mg	0	0
			1	1		

- Molecule 5 is CALCIUM ION (three-letter code: CA) (formula: Ca).

Mol	Chain	Residues	Atoms	ZeroOcc	AltConf
5	B	1	Total Ca 1 1	0	0
5	A	1	Total Ca 1 1	0	0

- Molecule 6 is CARBON DIOXIDE (three-letter code: CO₂) (formula: CO₂).



Mol	Chain	Residues	Atoms	ZeroOcc	AltConf
6	A	1	Total C O 3 1 2	0	0
6	B	1	Total C O 3 1 2	0	0

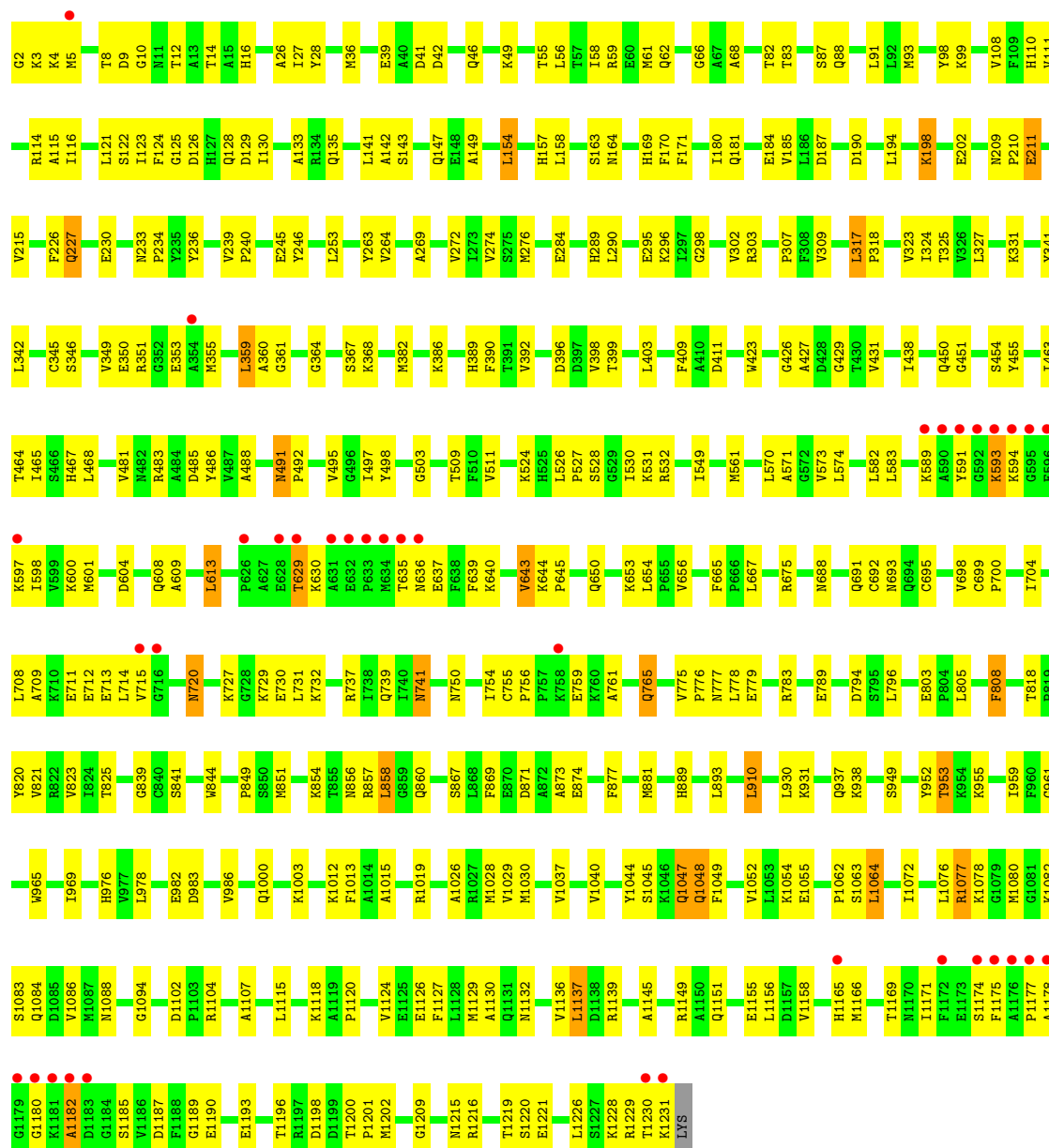
- Molecule 7 is water.

Mol	Chain	Residues	Atoms	ZeroOcc	AltConf
7	A	881	Total O 881 881	0	0
7	B	1097	Total O 1097 1097	0	0



● Molecule 1: PYRUVATE-FERREDOXIN OXIDOREDUCTASE

Chain B:



4 Data and refinement statistics

Property	Value	Source
Space group	P 21 21 21	Depositor
Cell constants a, b, c, α , β , γ	86.08Å 145.64Å 211.62Å 90.00° 90.00° 90.00°	Depositor
Resolution (Å)	8.00 – 1.93 8.00 – 1.92	Depositor EDS
% Data completeness (in resolution range)	88.4 (8.00-1.93) 87.3 (8.00-1.92)	Depositor EDS
R_{merge}	(Not available)	Depositor
R_{sym}	0.10	Depositor
$\langle I/\sigma(I) \rangle$ ¹	2.27 (at 1.93Å)	Xtriage
Refinement program	CNS 1.1	Depositor
R, R_{free}	0.186 , 0.228 0.189 , 0.184	Depositor DCC
R_{free} test set	17404 reflections (11.08%)	DCC
Wilson B-factor (Å ²)	16.2	Xtriage
Anisotropy	0.402	Xtriage
Bulk solvent k_{sol} (e/Å ³), B_{sol} (Å ²)	0.50 , 59.9	EDS
Estimated twinning fraction	No twinning to report.	Xtriage
L-test for twinning	$\langle L \rangle = 0.46$, $\langle L^2 \rangle = 0.29$	Xtriage
Outliers	0 of 174522 reflections	Xtriage
F_o, F_c correlation	0.94	EDS
Total number of atoms	20782	wwPDB-VP
Average B, all atoms (Å ²)	22.0	wwPDB-VP

Xtriage's analysis on translational NCS is as follows: *The largest off-origin peak in the Patterson function is 3.94% of the height of the origin peak. No significant pseudotranslation is detected.*

¹Intensities estimated from amplitudes.

5 Model quality

5.1 Standard geometry

Bond lengths and bond angles in the following residue types are not validated in this section: MG, CO2, CA, SF4, HTL

The Z score for a bond length (or angle) is the number of standard deviations the observed value is removed from the expected value. A bond length (or angle) with $|Z| > 5$ is considered an outlier worth inspection. RMSZ is the root-mean-square of all Z scores of the bond lengths (or angles).

Mol	Chain	Bond lengths		Bond angles	
		RMSZ	# Z >5	RMSZ	# Z >5
1	A	0.31	0/9543	0.58	1/12898 (0.0%)
1	B	0.32	0/9534	0.60	2/12884 (0.0%)
All	All	0.32	0/19077	0.59	3/25782 (0.0%)

There are no bond length outliers.

All (3) bond angle outliers are listed below:

Mol	Chain	Res	Type	Atoms	Z	Observed(°)	Ideal(°)
1	B	125	GLY	N-CA-C	5.87	127.76	113.10
1	A	125	GLY	N-CA-C	5.71	127.37	113.10
1	B	364	GLY	N-CA-C	5.09	125.82	113.10

There are no chirality outliers.

There are no planarity outliers.

5.2 Close contacts

In the following table, the Non-H and H(model) columns list the number of non-hydrogen atoms and hydrogen atoms in the chain respectively. The H(added) column lists the number of hydrogens added by MolProbity. The Clashes column lists the number of clashes within the asymmetric unit, and the number in parentheses is this value normalized per 1000 atoms of the molecule in the chain. The Symm-Clashes column gives symmetry related clashes, in the same way as for the Clashes column.

Mol	Chain	Non-H	H(model)	H(added)	Clashes	Symm-Clashes
1	A	9347	0	9203	428	0
1	B	9341	0	9207	369	0
2	A	24	0	0	0	0
2	B	24	0	0	0	0

Continued on next page...

Continued from previous page...

Mol	Chain	Non-H	H(model)	H(added)	Clashes	Symm-Clashes
3	A	29	0	18	1	0
3	B	29	0	18	2	0
4	A	1	0	0	0	0
4	B	1	0	0	0	0
5	A	1	0	0	0	0
5	B	1	0	0	0	0
6	A	3	0	0	0	0
6	B	3	0	0	0	0
7	A	881	0	0	25	0
7	B	1097	0	0	23	0
All	All	20782	0	18446	738	0

Clashscore is defined as the number of clashes calculated for the entry per 1000 atoms (including hydrogens) of the entry. The overall clashscore for this entry is 20.

All (738) close contacts within the same asymmetric unit are listed below.

Atom-1	Atom-2	Distance(Å)	Clash(Å)
3:A:2236:HTL:C1'	3:A:2236:HTL:C2	1.89	1.51
3:B:2236:HTL:C1'	3:B:2236:HTL:C2	1.86	1.50
1:B:274:VAL:HG23	1:B:324:ILE:HD11	1.32	1.08
1:A:1200:THR:HG22	1:A:1202:MET:H	1.14	1.06
1:B:823:VAL:HG21	1:B:1049:PHE:HE2	1.22	1.04
1:B:1200:THR:HG22	1:B:1202:MET:H	1.23	1.02
1:A:8:THR:HB	1:A:12:THR:HG21	1.44	1.00
1:A:198:LYS:H	1:A:198:LYS:HD2	1.23	0.99
1:A:1124:VAL:HG11	1:A:1156:LEU:HD21	1.45	0.98
1:A:639:PHE:HA	1:A:643:VAL:CG1	1.96	0.94
1:A:823:VAL:HG21	1:A:1049:PHE:HE2	1.35	0.92
1:B:1124:VAL:HG11	1:B:1156:LEU:HD21	1.51	0.92
1:B:12:THR:HG22	1:B:39:GLU:OE1	1.69	0.92
1:B:227:GLN:HE21	1:B:227:GLN:H	1.17	0.92
1:B:454:SER:HB3	1:B:465:ILE:HG23	1.53	0.91
1:B:1137:LEU:HD12	1:B:1145:ALA:HB2	1.51	0.90
1:B:639:PHE:HA	1:B:643:VAL:HG13	1.53	0.90
1:A:398:VAL:HG22	1:A:656:VAL:HG21	1.53	0.90
1:B:823:VAL:HG21	1:B:1049:PHE:CE2	2.08	0.88
1:A:1003:LYS:HZ2	1:B:976:HIS:HD2	1.23	0.87
1:A:558:ARG:HG2	1:A:560:ASN:ND2	1.90	0.86
1:A:8:THR:HB	1:A:12:THR:CG2	2.05	0.86
1:A:691:GLN:HE22	1:A:727:LYS:H	1.24	0.85
1:A:1077:ARG:HH11	1:A:1077:ARG:HB2	1.39	0.85
1:B:147:GLN:HE22	1:B:184:GLU:H	1.21	0.84

Continued on next page...

Continued from previous page...

Atom-1	Atom-2	Distance(Å)	Clash(Å)
1:B:639:PHE:HA	1:B:643:VAL:CG1	2.08	0.83
1:A:1080:MET:H	1:B:1215:ASN:ND2	1.77	0.83
1:A:601:MET:CA	1:A:602:ASN:N	2.43	0.82
1:B:711:GLU:CA	1:B:712:GLU:N	2.42	0.82
1:B:1126:GLU:CA	1:B:1127:PHE:N	2.43	0.82
1:B:712:GLU:CA	1:B:713:GLU:N	2.43	0.82
1:A:532:ARG:CA	1:A:533:THR:N	2.43	0.81
1:A:637:GLU:CA	1:A:638:PHE:N	2.43	0.81
1:B:245:GLU:CA	1:B:246:TYR:N	2.43	0.81
1:A:445:THR:HG21	1:A:574:LEU:HD21	1.61	0.81
1:A:9:ASP:OD2	1:A:12:THR:HG22	1.80	0.81
1:A:35:THR:O	1:A:39:GLU:HG2	1.81	0.80
1:B:454:SER:HB3	1:B:465:ILE:CG2	2.12	0.80
1:B:398:VAL:HG22	1:B:656:VAL:HG21	1.62	0.79
1:B:56:LEU:HD23	1:B:58:ILE:HD11	1.64	0.79
1:A:644:LYS:HB3	1:A:645:PRO:HD3	1.65	0.79
1:A:931:LYS:HE2	1:A:949:SER:HB2	1.65	0.78
1:B:239:VAL:HG13	1:B:240:PRO:HD3	1.66	0.78
1:A:910:LEU:HD13	1:A:930:LEU:HD11	1.66	0.77
1:A:937:GLN:HG2	1:A:942:LEU:HB3	1.65	0.77
1:A:1132:ASN:HD21	1:A:1139:ARG:HH12	1.30	0.77
1:B:986:VAL:HG13	1:B:1064:LEU:HA	1.64	0.77
1:B:264:VAL:HG11	1:B:284:GLU:HG3	1.66	0.77
1:A:1111:ASN:HD21	1:A:1169:THR:HG22	1.50	0.76
1:A:147:GLN:HE22	1:A:184:GLU:H	1.31	0.76
1:B:49:LYS:NZ	1:B:55:THR:HG23	2.01	0.76
1:B:1077:ARG:HD2	1:B:1130:ALA:HA	1.66	0.76
1:B:1132:ASN:HD21	1:B:1139:ARG:HH12	1.33	0.76
1:A:639:PHE:HA	1:A:643:VAL:HG12	1.67	0.76
1:A:569:LYS:HD3	1:A:613:LEU:HD23	1.66	0.76
1:A:575:PRO:HG2	1:A:578:LYS:HB3	1.69	0.75
7:A:2174:HOH:O	1:B:953:THR:HG21	1.85	0.75
1:A:1200:THR:HG22	1:A:1202:MET:N	1.98	0.75
1:A:455:TYR:HB2	1:B:1201:PRO:HG3	1.66	0.75
1:A:1200:THR:HG23	1:A:1201:PRO:HD2	1.68	0.75
1:A:1151:GLN:O	1:A:1155:GLU:HG3	1.87	0.74
1:B:62:GLN:HA	7:B:2929:HOH:O	1.87	0.74
1:A:635:THR:HG23	1:A:639:PHE:HB3	1.68	0.74
1:B:986:VAL:HG12	1:B:1063:SER:O	1.87	0.74
1:B:549:ILE:HG23	1:B:608:GLN:HG2	1.68	0.74
1:A:110:HIS:HD2	1:A:169:HIS:HD2	1.36	0.74
1:A:1132:ASN:O	1:A:1136:VAL:HG23	1.87	0.74

Continued on next page...

Continued from previous page...

Atom-1	Atom-2	Distance(Å)	Clash(Å)
1:B:1102:ASP:OD1	1:B:1104:ARG:HG2	1.88	0.74
1:A:691:GLN:NE2	1:A:727:LYS:H	1.86	0.73
1:A:227:GLN:HE21	1:A:227:GLN:H	1.37	0.73
1:B:1047:GLN:NE2	1:B:1047:GLN:H	1.86	0.73
1:B:856:ASN:HD21	1:B:860:GLN:HE21	1.34	0.73
1:A:1077:ARG:NH1	1:A:1077:ARG:HB2	2.04	0.73
1:A:805:LEU:HD23	1:A:862:PRO:HD3	1.69	0.72
1:A:1102:ASP:OD1	1:A:1104:ARG:HG2	1.89	0.72
1:A:635:THR:CG2	1:A:639:PHE:HB3	2.19	0.72
1:A:454:SER:HB2	1:A:465:ILE:CG2	2.19	0.72
1:A:523:ASP:HA	1:A:531:LYS:NZ	2.04	0.72
1:A:82:THR:HG21	1:A:157:HIS:HE1	1.54	0.72
1:A:1230:THR:O	1:A:1232:LYS:HD3	1.90	0.72
1:A:264:VAL:HG11	1:A:284:GLU:HG3	1.70	0.72
1:A:1167:ALA:HA	7:A:2774:HOH:O	1.89	0.72
1:A:823:VAL:HG21	1:A:1049:PHE:CE2	2.24	0.72
1:B:236:TYR:O	1:B:239:VAL:HG12	1.89	0.72
1:B:290:LEU:HD11	1:B:409:PHE:HZ	1.55	0.71
1:A:1080:MET:H	1:B:1215:ASN:HD21	1.37	0.71
1:B:593:LYS:HD2	1:B:594:LYS:N	2.04	0.71
1:B:245:GLU:O	1:B:246:TYR:N	2.24	0.71
1:B:1126:GLU:O	1:B:1127:PHE:N	2.24	0.71
1:B:245:GLU:CA	1:B:245:GLU:O	2.39	0.71
1:B:1126:GLU:O	1:B:1126:GLU:CA	2.39	0.71
1:B:110:HIS:HD2	1:B:169:HIS:HD2	1.37	0.71
1:B:272:VAL:O	1:B:324:ILE:HD12	1.91	0.70
1:A:1078:LYS:O	1:B:1219:THR:HG23	1.90	0.70
1:B:691:GLN:HE22	1:B:727:LYS:H	1.37	0.70
1:B:5:MET:HE1	1:B:184:GLU:HB2	1.73	0.70
1:A:986:VAL:CG2	1:A:1064:LEU:HA	2.22	0.70
1:A:601:MET:O	1:A:602:ASN:N	2.25	0.70
1:B:711:GLU:O	1:B:711:GLU:CA	2.39	0.70
1:B:711:GLU:O	1:B:712:GLU:N	2.24	0.70
1:A:637:GLU:O	1:A:638:PHE:N	2.24	0.70
1:A:601:MET:O	1:A:601:MET:CA	2.40	0.69
1:B:712:GLU:CA	1:B:712:GLU:O	2.40	0.69
1:A:1181:LYS:H	1:B:1019:ARG:HH12	1.39	0.69
1:B:1200:THR:HG22	1:B:1202:MET:N	2.03	0.69
1:A:325:THR:HG22	1:A:359:LEU:HB2	1.73	0.69
1:B:775:VAL:O	1:B:779:GLU:HG2	1.92	0.69
1:A:532:ARG:O	1:A:532:ARG:CA	2.40	0.69
1:A:532:ARG:O	1:A:533:THR:N	2.25	0.69

Continued on next page...

Continued from previous page...

Atom-1	Atom-2	Distance(Å)	Clash(Å)
1:B:712:GLU:O	1:B:713:GLU:N	2.25	0.69
1:A:1215:ASN:ND2	1:B:1080:MET:H	1.91	0.69
1:A:1029:VAL:HG23	1:A:1037:VAL:HG21	1.74	0.69
1:A:637:GLU:O	1:A:637:GLU:CA	2.40	0.69
1:A:1108:GLN:HE21	1:A:1110:LYS:HD2	1.58	0.69
1:B:398:VAL:HG13	1:B:656:VAL:HG23	1.74	0.68
1:A:198:LYS:N	1:A:198:LYS:HD2	2.05	0.68
1:A:1047:GLN:NE2	1:A:1047:GLN:H	1.90	0.68
1:A:739:GLN:NE2	1:A:777:ASN:HB3	2.08	0.68
1:A:111:VAL:HG13	1:A:170:PHE:HB3	1.73	0.68
1:A:558:ARG:HG2	1:A:560:ASN:HD21	1.57	0.68
1:A:56:LEU:HD23	1:A:58:ILE:HD11	1.75	0.67
1:A:325:THR:HG21	7:A:2340:HOH:O	1.92	0.67
1:A:986:VAL:HG23	1:A:1064:LEU:HD23	1.76	0.67
1:A:398:VAL:HG13	1:A:656:VAL:HG23	1.75	0.67
1:B:325:THR:HG23	1:B:382:MET:SD	2.34	0.67
1:A:856:ASN:HD21	1:A:860:GLN:HE21	1.42	0.67
1:B:818:THR:HA	1:B:821:VAL:HG12	1.77	0.67
1:B:325:THR:HG22	1:B:359:LEU:HB2	1.77	0.67
1:A:331:LYS:HE3	1:B:230:GLU:OE2	1.95	0.67
1:A:953:THR:HG21	7:B:2219:HOH:O	1.94	0.66
1:A:499:ASP:OD2	1:A:502:GLU:HB2	1.95	0.66
1:A:986:VAL:HG22	1:A:1063:SER:O	1.95	0.66
1:A:759:GLU:CD	1:A:759:GLU:H	1.99	0.66
1:A:49:LYS:HE3	7:A:2036:HOH:O	1.96	0.66
1:B:239:VAL:CG1	1:B:240:PRO:HD3	2.26	0.66
1:A:635:THR:HG22	1:A:640:LYS:HG3	1.76	0.65
1:B:1137:LEU:HD12	1:B:1145:ALA:CB	2.24	0.65
1:B:986:VAL:CG1	1:B:1064:LEU:HA	2.25	0.65
1:A:239:VAL:CG2	1:A:240:PRO:HD3	2.26	0.65
1:A:198:LYS:CD	1:A:198:LYS:H	2.03	0.65
1:B:775:VAL:HB	1:B:776:PRO:HD3	1.78	0.65
1:A:215:VAL:HG11	1:B:851:MET:SD	2.37	0.65
1:A:754:ILE:HD11	1:A:1084:GLN:HB2	1.77	0.65
1:B:10:GLY:O	1:B:14:THR:HG23	1.96	0.64
1:A:431:VAL:HG12	1:A:435:LYS:HE3	1.78	0.64
1:B:709:ALA:HB3	1:B:714:LEU:HD11	1.79	0.64
1:A:1219:THR:HG23	1:B:1078:LYS:O	1.96	0.64
1:B:135:GLN:H	1:B:135:GLN:CD	2.00	0.64
1:B:877:PHE:HE1	1:B:982:GLU:HG3	1.63	0.64
1:B:931:LYS:HE2	1:B:949:SER:HB2	1.80	0.64
1:A:398:VAL:HG22	1:A:656:VAL:CG2	2.28	0.64

Continued on next page...

Continued from previous page...

Atom-1	Atom-2	Distance(Å)	Clash(Å)
1:A:233:ASN:HB2	7:A:2197:HOH:O	1.98	0.64
1:A:345:CYS:SG	1:B:349:VAL:HG21	2.38	0.64
1:A:593:LYS:HG3	1:A:594:LYS:H	1.63	0.63
1:A:578:LYS:O	1:A:582:LEU:HD13	1.97	0.63
1:A:82:THR:CG2	1:A:157:HIS:HE1	2.11	0.63
1:B:351:ARG:HD3	1:B:353:GLU:HB2	1.81	0.63
1:A:549:ILE:HG23	1:A:608:GLN:NE2	2.13	0.63
1:B:598:ILE:HD13	1:B:601:MET:HE3	1.80	0.63
1:A:163:SER:HB2	1:A:239:VAL:HG12	1.81	0.63
1:A:6:MET:HG2	1:A:8:THR:HG23	1.79	0.63
1:B:1029:VAL:HG23	1:B:1037:VAL:HG21	1.79	0.63
1:A:1113:PHE:HB3	7:A:2774:HOH:O	1.99	0.63
1:A:274:VAL:HG23	1:A:324:ILE:HD11	1.81	0.63
1:A:561:MET:CE	1:A:583:LEU:HD21	2.28	0.62
1:A:586:SER:HA	1:A:589:LYS:HZ3	1.64	0.62
1:A:892:ASP:HB3	7:A:2649:HOH:O	1.99	0.62
1:B:1189:GLY:HA3	1:B:1196:THR:HG21	1.81	0.62
1:B:1137:LEU:CD1	1:B:1145:ALA:HB2	2.28	0.62
1:B:1047:GLN:CD	1:B:1047:GLN:H	2.02	0.62
1:B:1029:VAL:HG21	1:B:1064:LEU:HD12	1.81	0.62
1:A:851:MET:SD	1:B:215:VAL:HG11	2.39	0.62
1:B:1231:LYS:HB2	1:B:1231:LYS:NZ	2.15	0.61
1:A:164:ASN:HD22	1:A:206:LYS:NZ	1.97	0.61
1:B:598:ILE:HD13	1:B:601:MET:CE	2.31	0.61
1:A:758:LYS:NZ	1:A:758:LYS:HB2	2.16	0.61
1:B:227:GLN:NE2	1:B:227:GLN:H	1.95	0.61
1:B:276:MET:HB2	1:B:302:VAL:CG2	2.30	0.61
1:A:140:MET:HG2	1:A:168:MET:HE3	1.82	0.61
1:A:14:THR:HG21	1:A:171:PHE:CE2	2.35	0.61
1:B:1124:VAL:HG13	7:B:2985:HOH:O	2.00	0.61
1:A:235:TYR:O	1:A:239:VAL:HG13	2.01	0.61
1:B:143:SER:OG	1:B:171:PHE:HB3	2.01	0.60
1:B:691:GLN:NE2	1:B:727:LYS:H	1.99	0.60
1:A:1047:GLN:HE21	1:A:1047:GLN:H	1.48	0.60
1:A:454:SER:HB2	1:A:465:ILE:HG23	1.82	0.60
1:A:324:ILE:HD13	1:A:324:ILE:C	2.21	0.60
1:A:325:THR:HG23	1:A:382:MET:SD	2.41	0.60
1:A:1196:THR:HG23	1:B:1072:ILE:O	2.00	0.60
1:A:99:LYS:HE3	1:B:867:SER:O	2.01	0.60
1:B:1129:MET:CE	1:B:1149:ARG:HD3	2.31	0.60
1:A:1015:ALA:CB	1:B:1185:SER:HB2	2.32	0.60
1:B:737:ARG:HH11	1:B:739:GLN:HE22	1.49	0.60

Continued on next page...

Continued from previous page...

Atom-1	Atom-2	Distance(Å)	Clash(Å)
1:A:349:VAL:HG21	1:B:345:CYS:SG	2.42	0.60
1:A:1129:MET:HE2	1:A:1129:MET:HA	1.82	0.60
1:B:1045:SER:OG	1:B:1047:GLN:NE2	2.35	0.60
1:A:805:LEU:HB2	1:A:825:THR:HB	1.84	0.59
1:A:43:TRP:HB3	1:A:48:ARG:HD3	1.84	0.59
1:A:110:HIS:HD2	1:A:169:HIS:CD2	2.20	0.59
1:A:1188:PHE:HE1	1:A:1196:THR:HG22	1.67	0.59
1:B:49:LYS:HZ2	1:B:55:THR:HG23	1.67	0.59
1:B:1118:LYS:HE3	7:B:3005:HOH:O	2.02	0.59
1:B:16:HIS:HD2	7:B:2039:HOH:O	1.85	0.59
1:B:1151:GLN:O	1:B:1155:GLU:HG3	2.01	0.59
1:B:198:LYS:O	1:B:202:GLU:HG3	2.03	0.59
1:B:571:ALA:HB3	7:B:2600:HOH:O	2.02	0.59
1:A:561:MET:HE1	1:A:583:LEU:HD21	1.84	0.58
1:A:209:ASN:OD1	1:A:211:GLU:HB2	2.02	0.58
1:B:8:THR:HB	1:B:12:THR:OG1	2.03	0.58
1:B:49:LYS:HZ3	1:B:55:THR:HG23	1.67	0.58
1:A:236:TYR:O	1:A:239:VAL:HG22	2.03	0.58
1:A:1027:ARG:HA	1:A:1030:MET:HE3	1.86	0.58
1:B:794:ASP:OD1	1:B:1054:LYS:HD2	2.04	0.58
1:A:215:VAL:HG12	1:B:665:PHE:O	2.02	0.58
1:A:867:SER:O	1:B:99:LYS:HE3	2.04	0.58
1:A:581:ASP:O	1:A:585:LYS:HG2	2.04	0.58
1:B:820:TYR:O	1:B:823:VAL:HG22	2.03	0.58
1:A:194:LEU:HD21	1:A:253:LEU:HD11	1.84	0.58
1:B:4:LYS:HZ3	1:B:4:LYS:HB3	1.69	0.58
1:B:708:LEU:HD21	1:B:731:LEU:HD22	1.85	0.58
1:A:566:ALA:HA	1:A:613:LEU:HD21	1.85	0.58
1:A:1158:VAL:O	1:A:1162:GLU:HG3	2.04	0.58
1:A:526:LEU:O	1:A:531:LYS:HE2	2.04	0.57
1:A:883:MET:HE1	1:A:955:LYS:HG3	1.86	0.57
1:A:575:PRO:HG2	1:A:578:LYS:CB	2.34	0.57
1:B:1044:TYR:OH	1:B:1118:LYS:HE2	2.04	0.57
1:A:1165:HIS:HD2	1:B:1171:ILE:HD12	1.69	0.57
1:A:1077:ARG:CB	1:A:1077:ARG:HH11	2.14	0.57
1:A:142:ALA:HB2	1:A:170:PHE:CZ	2.39	0.57
1:B:526:LEU:O	1:B:531:LYS:HE3	2.04	0.57
1:B:675:ARG:HD3	7:B:2700:HOH:O	2.03	0.57
1:B:9:ASP:OD2	1:B:12:THR:HG23	2.04	0.57
1:A:739:GLN:HE22	1:A:777:ASN:HB3	1.67	0.57
1:A:68:ALA:HB2	1:A:93:MET:HG2	1.87	0.57
1:A:1181:LYS:HB2	1:A:1181:LYS:NZ	2.20	0.57

Continued on next page...

Continued from previous page...

Atom-1	Atom-2	Distance(Å)	Clash(Å)
1:A:164:ASN:HD22	1:A:206:LYS:HZ1	1.51	0.57
1:B:573:VAL:HG22	7:B:2600:HOH:O	2.05	0.57
1:B:42:ASP:O	1:B:46:GLN:HG3	2.04	0.57
1:A:1015:ALA:HB1	1:B:1185:SER:HB2	1.86	0.57
1:B:1187:ASP:HB3	1:B:1190:GLU:HG3	1.87	0.57
1:B:729:LYS:C	1:B:729:LYS:HD3	2.25	0.56
1:A:396:ASP:OD2	1:A:398:VAL:HG22	2.05	0.56
1:A:350:GLU:OE1	1:B:389:HIS:HE1	1.88	0.56
1:B:1219:THR:HG22	1:B:1220:SER:N	2.20	0.56
1:B:986:VAL:HG13	1:B:1064:LEU:HD23	1.86	0.56
1:A:561:MET:HE3	1:A:564:GLN:HB3	1.87	0.56
1:B:82:THR:HG23	1:B:108:VAL:O	2.05	0.56
1:A:356:PRO:O	1:A:358:ILE:HD12	2.06	0.56
1:A:463:ILE:HD13	1:A:494:TYR:CE1	2.41	0.56
1:A:986:VAL:HG22	1:A:1064:LEU:HA	1.87	0.56
1:A:523:ASP:HA	1:A:531:LYS:HZ3	1.70	0.56
1:A:1129:MET:CE	1:A:1129:MET:HA	2.36	0.56
1:A:606:VAL:O	1:A:610:VAL:HG23	2.05	0.56
1:B:26:ALA:O	1:B:27:ILE:HD12	2.06	0.55
1:B:737:ARG:HE	1:B:739:GLN:NE2	2.04	0.55
1:A:712:GLU:O	1:A:715:VAL:HG23	2.06	0.55
1:B:346:SER:O	1:B:350:GLU:HG3	2.07	0.55
1:B:3:LYS:HE2	1:B:253:LEU:O	2.05	0.55
1:B:857:ARG:HG3	1:B:858:LEU:HD13	1.88	0.55
1:B:26:ALA:C	1:B:27:ILE:HD12	2.26	0.55
1:B:110:HIS:HD2	1:B:169:HIS:CD2	2.23	0.55
1:B:110:HIS:HE1	1:B:157:HIS:NE2	2.04	0.55
1:A:635:THR:HG21	1:A:639:PHE:HD2	1.71	0.55
1:B:111:VAL:HG22	1:B:170:PHE:HB3	1.87	0.55
1:A:331:LYS:HD3	1:A:362:ARG:CZ	2.37	0.55
1:B:1200:THR:HG23	1:B:1201:PRO:HD2	1.88	0.55
1:B:877:PHE:CE1	1:B:982:GLU:HG3	2.42	0.55
1:B:41:ASP:HA	1:B:58:ILE:HD12	1.90	0.54
1:A:1219:THR:HG22	1:A:1220:SER:N	2.22	0.54
1:B:629:THR:HB	7:B:2644:HOH:O	2.07	0.54
1:A:111:VAL:HG13	1:A:170:PHE:CB	2.36	0.54
1:B:1166:MET:O	1:B:1169:THR:HG22	2.07	0.54
1:A:1003:LYS:NZ	1:B:976:HIS:HD2	2.00	0.54
1:B:325:THR:HG21	7:B:2420:HOH:O	2.07	0.54
1:A:593:LYS:HG3	1:A:594:LYS:N	2.22	0.54
1:A:1185:SER:HB2	1:B:1015:ALA:HB1	1.89	0.54
1:B:121:LEU:HD23	1:B:122:SER:N	2.23	0.54

Continued on next page...

Continued from previous page...

Atom-1	Atom-2	Distance(Å)	Clash(Å)
1:B:227:GLN:N	1:B:227:GLN:HE21	1.98	0.54
1:A:82:THR:HG21	1:A:157:HIS:CE1	2.39	0.54
1:B:121:LEU:C	1:B:121:LEU:HD23	2.28	0.54
1:B:390:PHE:HB2	1:B:403:LEU:HD13	1.89	0.54
1:B:133:ALA:HA	1:B:135:GLN:HE22	1.73	0.54
1:A:1196:THR:HG22	1:A:1196:THR:O	2.08	0.54
1:A:194:LEU:HD21	1:A:253:LEU:CD1	2.37	0.54
1:B:983:ASP:HB2	7:B:2972:HOH:O	2.07	0.54
1:B:597:LYS:HB3	1:B:597:LYS:NZ	2.23	0.54
1:A:211:GLU:OE1	1:B:955:LYS:HE3	2.08	0.54
1:B:392:VAL:HG22	1:B:403:LEU:HB2	1.89	0.54
1:A:976:HIS:HD2	1:B:1003:LYS:NZ	2.06	0.54
1:B:351:ARG:HD2	7:B:2386:HOH:O	2.08	0.54
1:B:1189:GLY:CA	1:B:1196:THR:HG21	2.38	0.54
1:B:398:VAL:HG22	1:B:656:VAL:CG2	2.36	0.53
1:A:1094:GLY:HA3	1:A:1120:PRO:HG3	1.90	0.53
1:B:349:VAL:HA	1:B:355:MET:HE1	1.91	0.53
1:A:869:PHE:CE2	1:A:969:ILE:HG21	2.43	0.53
1:B:351:ARG:CD	1:B:353:GLU:HB2	2.38	0.53
1:A:486:TYR:OH	1:A:511:VAL:HG11	2.08	0.53
1:B:14:THR:HG21	1:B:171:PHE:CE2	2.43	0.53
1:B:1132:ASN:O	1:B:1136:VAL:HG22	2.08	0.53
1:B:27:ILE:HG13	7:B:2075:HOH:O	2.09	0.53
1:A:1209:GLY:O	1:B:429:GLY:HA2	2.08	0.53
1:A:239:VAL:HG23	1:A:240:PRO:HD3	1.91	0.53
1:A:27:ILE:HG23	1:A:28:TYR:N	2.24	0.53
1:B:209:ASN:OD1	1:B:211:GLU:HB2	2.09	0.53
1:A:1132:ASN:ND2	1:A:1139:ARG:HH12	2.03	0.53
1:A:523:ASP:HA	1:A:531:LYS:HZ1	1.72	0.53
1:A:1003:LYS:HZ2	1:B:976:HIS:CD2	2.15	0.53
1:B:438:ILE:HD11	1:B:468:LEU:HD22	1.91	0.53
1:A:857:ARG:HG3	1:A:858:LEU:HD12	1.91	0.53
1:A:820:TYR:O	1:A:823:VAL:HG22	2.09	0.53
1:B:5:MET:CE	1:B:184:GLU:HB2	2.39	0.52
1:A:147:GLN:NE2	1:A:184:GLU:H	2.03	0.52
1:B:765:GLN:HE21	1:B:765:GLN:HA	1.75	0.52
1:A:1219:THR:HG21	1:B:1082:LYS:HD3	1.91	0.52
1:A:665:PHE:O	1:B:215:VAL:HG12	2.08	0.52
1:A:1187:ASP:HB3	1:A:1190:GLU:HG3	1.91	0.52
1:A:1028:MET:HE2	1:B:1028:MET:HE2	1.90	0.52
1:A:635:THR:HG21	1:A:639:PHE:CD2	2.45	0.52
1:B:495:VAL:HG11	1:B:526:LEU:HD12	1.90	0.52

Continued on next page...

Continued from previous page...

Atom-1	Atom-2	Distance(Å)	Clash(Å)
1:B:467:HIS:CD2	1:B:481:VAL:H	2.28	0.52
1:B:1132:ASN:ND2	1:B:1139:ARG:HH12	2.03	0.52
1:A:324:ILE:HD13	1:A:325:THR:N	2.23	0.52
1:A:290:LEU:HB3	1:A:295:GLU:HG3	1.91	0.52
1:B:524:LYS:HB2	1:B:524:LYS:NZ	2.25	0.52
1:A:986:VAL:HG23	1:A:1064:LEU:HA	1.91	0.52
1:A:1044:TYR:OH	1:A:1118:LYS:HE2	2.10	0.52
1:A:180:ILE:O	1:A:450:GLN:HA	2.09	0.52
1:A:841:SER:HA	1:A:844:TRP:CE2	2.45	0.52
1:B:910:LEU:HD13	1:B:930:LEU:HD11	1.91	0.52
1:A:324:ILE:CG2	1:A:358:ILE:HG13	2.40	0.52
1:B:889:HIS:O	1:B:893:LEU:HD13	2.10	0.52
1:A:135:GLN:H	1:A:135:GLN:NE2	2.07	0.52
1:A:1180:GLY:O	1:A:1181:LYS:HB2	2.09	0.52
1:A:720:ASN:HD22	1:A:720:ASN:N	2.08	0.52
1:A:1219:THR:HG22	1:A:1221:GLU:HG2	1.92	0.51
1:A:857:ARG:CG	1:A:858:LEU:HD12	2.41	0.51
1:B:491:ASN:HD22	1:B:492:PRO:HD2	1.75	0.51
1:B:1136:VAL:HG12	1:B:1139:ARG:NH1	2.25	0.51
1:B:27:ILE:CG2	1:B:28:TYR:N	2.71	0.51
1:A:1181:LYS:H	1:B:1019:ARG:NH1	2.08	0.51
1:A:549:ILE:HB	1:A:562:ILE:HD13	1.93	0.51
1:B:1048:GLN:O	1:B:1052:VAL:HG23	2.10	0.51
1:A:1105:LEU:O	1:A:1108:GLN:HG2	2.11	0.51
1:B:198:LYS:HE3	1:B:198:LYS:N	2.26	0.51
1:A:902:ALA:O	1:A:907:LYS:HE3	2.11	0.51
1:A:818:THR:HA	1:A:821:VAL:HG22	1.91	0.51
1:B:467:HIS:HD2	1:B:481:VAL:H	1.59	0.51
1:B:323:VAL:HG21	1:B:386:LYS:NZ	2.25	0.51
1:B:423:TRP:CE3	1:B:463:ILE:HD11	2.46	0.51
1:A:190:ASP:O	1:A:194:LEU:CD2	2.58	0.51
1:B:871:ASP:O	1:B:874:GLU:HG2	2.11	0.51
1:A:684:TRP:CE3	1:A:686:PRO:HG3	2.46	0.51
1:B:841:SER:HA	1:B:844:TRP:CE2	2.45	0.51
1:B:239:VAL:CG1	1:B:307:PRO:HG2	2.41	0.51
1:A:1026:ALA:O	1:A:1029:VAL:HG22	2.10	0.51
1:A:27:ILE:CG2	1:A:28:TYR:N	2.74	0.51
1:A:755:CYS:SG	1:A:761:ALA:HB3	2.51	0.51
1:A:239:VAL:HG22	1:A:240:PRO:HD3	1.92	0.51
1:A:1144:ASP:OD1	1:B:1182:ALA:HB2	2.10	0.51
1:A:1124:VAL:HG13	7:A:2786:HOH:O	2.10	0.51
1:B:233:ASN:HB2	7:B:2250:HOH:O	2.11	0.51

Continued on next page...

Continued from previous page...

Atom-1	Atom-2	Distance(Å)	Clash(Å)
1:B:290:LEU:HD11	1:B:409:PHE:CZ	2.42	0.51
1:A:274:VAL:CG2	1:A:324:ILE:HD11	2.41	0.51
1:B:737:ARG:HE	1:B:739:GLN:HE21	1.57	0.51
1:B:426:GLY:O	1:B:427:ALA:HB3	2.10	0.51
1:A:691:GLN:HE22	1:A:727:LYS:N	2.01	0.51
1:B:1040:VAL:HG12	1:B:1048:GLN:HE22	1.75	0.51
1:B:609:ALA:O	1:B:613:LEU:HD22	2.11	0.51
1:B:87:SER:OG	1:B:88:GLN:N	2.44	0.51
1:A:1000:GLN:NE2	1:A:1000:GLN:H	2.09	0.50
1:A:456:ASP:OD1	1:A:463:ILE:HG22	2.10	0.50
1:B:1129:MET:HE3	1:B:1149:ARG:HD3	1.92	0.50
1:A:534:ILE:HA	1:A:539:LEU:HD12	1.92	0.50
1:B:650:GLN:HE22	1:B:653:LYS:NZ	2.09	0.50
1:A:194:LEU:N	1:A:194:LEU:HD22	2.26	0.50
1:B:82:THR:HG22	1:B:83:THR:N	2.26	0.50
1:A:1051:LYS:HE3	1:A:1100:ARG:NH1	2.26	0.50
1:A:483:ARG:HA	1:A:503:GLY:O	2.11	0.50
1:A:774:GLN:HA	1:A:774:GLN:NE2	2.26	0.50
1:A:227:GLN:HE22	1:B:368:LYS:HZ3	1.60	0.50
1:A:359:LEU:N	1:A:359:LEU:HD12	2.26	0.50
1:B:486:TYR:HA	1:B:509:THR:HG23	1.93	0.50
1:A:221:ASN:HB3	1:A:222:PRO:CD	2.41	0.50
1:A:121:LEU:HD23	1:A:121:LEU:C	2.32	0.50
1:A:538:LYS:HD2	1:A:538:LYS:N	2.27	0.50
1:B:114:ARG:NE	1:B:123:ILE:HA	2.26	0.50
1:A:435:LYS:HE2	7:A:2407:HOH:O	2.12	0.49
1:A:821:VAL:HG11	7:A:2275:HOH:O	2.12	0.49
1:B:27:ILE:HG23	1:B:28:TYR:N	2.27	0.49
1:A:431:VAL:CG1	1:A:435:LYS:HE3	2.42	0.49
1:A:549:ILE:HG23	1:A:608:GLN:HE21	1.77	0.49
1:A:346:SER:HA	1:A:349:VAL:HG22	1.93	0.49
1:A:636:ASN:ND2	1:A:672:PHE:CE1	2.81	0.49
1:A:110:HIS:HE1	1:A:157:HIS:NE2	2.10	0.49
1:A:180:ILE:HG23	1:A:451:GLY:N	2.28	0.49
1:B:644:LYS:HB3	1:B:645:PRO:HD3	1.93	0.49
1:A:936:GLY:O	1:A:938:LYS:HD3	2.12	0.49
1:B:28:TYR:HE1	7:B:2929:HOH:O	1.95	0.49
1:A:115:ALA:HB2	1:A:126:ASP:OD1	2.13	0.49
1:A:639:PHE:HA	1:A:643:VAL:HG13	1.87	0.49
1:A:1219:THR:CG2	1:A:1221:GLU:HG2	2.43	0.49
1:B:431:VAL:CG2	1:B:464:THR:HG21	2.43	0.49
1:B:528:SER:O	1:B:532:ARG:HG3	2.13	0.49

Continued on next page...

Continued from previous page...

Atom-1	Atom-2	Distance(Å)	Clash(Å)
1:A:26:ALA:C	1:A:27:ILE:HD12	2.33	0.49
1:A:124:PHE:HB3	1:A:367:SER:HB2	1.95	0.49
1:B:961:GLY:HA3	1:B:965:TRP:CE3	2.48	0.49
1:A:1166:MET:O	1:A:1169:THR:HG22	2.12	0.49
1:A:346:SER:O	1:A:349:VAL:HG22	2.12	0.49
1:A:1215:ASN:HD21	1:B:1080:MET:H	1.59	0.48
1:A:42:ASP:O	1:A:46:GLN:HG3	2.12	0.48
1:B:147:GLN:NE2	1:B:184:GLU:H	2.00	0.48
1:A:1027:ARG:HA	1:A:1030:MET:CE	2.43	0.48
1:B:495:VAL:HG12	1:B:527:PRO:CD	2.44	0.48
1:A:741:ASN:C	1:A:741:ASN:HD22	2.16	0.48
1:B:361:GLY:HA3	1:B:390:PHE:CZ	2.48	0.48
1:A:180:ILE:HD12	1:A:181:GLN:N	2.28	0.48
1:A:698:VAL:HG11	1:A:1084:GLN:HG3	1.94	0.48
1:B:68:ALA:HB2	1:B:93:MET:HG2	1.94	0.48
1:A:55:THR:HG22	7:A:2032:HOH:O	2.13	0.48
1:A:227:GLN:NE2	1:A:227:GLN:H	2.06	0.48
1:A:698:VAL:HG13	7:A:2538:HOH:O	2.13	0.48
1:B:739:GLN:NE2	1:B:777:ASN:HB3	2.27	0.48
1:A:131:TYR:O	1:A:134:ARG:HG2	2.13	0.48
1:A:536:ASN:ND2	1:A:623:LYS:HG2	2.28	0.48
1:B:589:LYS:HB3	1:B:589:LYS:NZ	2.28	0.48
1:A:230:GLU:OE2	1:B:331:LYS:HE2	2.13	0.48
1:A:1188:PHE:CE1	1:A:1196:THR:HG22	2.47	0.48
1:B:1129:MET:HE2	1:B:1149:ARG:HD3	1.94	0.48
1:B:411:ASP:HB2	1:B:483:ARG:HD2	1.95	0.48
1:A:390:PHE:HB2	1:A:403:LEU:HD13	1.96	0.48
1:A:421:GLN:HA	1:A:466:SER:O	2.14	0.48
1:B:805:LEU:HB2	1:B:825:THR:HB	1.96	0.48
1:A:14:THR:CG2	1:A:149:ALA:HB1	2.44	0.48
1:A:351:ARG:HD3	7:A:2318:HOH:O	2.13	0.48
1:A:404:PRO:HG2	7:A:2372:HOH:O	2.13	0.48
1:B:873:ALA:HA	1:B:959:ILE:HD13	1.96	0.47
1:A:163:SER:O	1:A:164:ASN:HB2	2.15	0.47
1:A:463:ILE:HD13	1:A:494:TYR:CZ	2.50	0.47
1:A:858:LEU:N	1:A:858:LEU:HD12	2.29	0.47
1:B:495:VAL:HG12	1:B:527:PRO:HD3	1.97	0.47
1:A:709:ALA:HB3	1:A:714:LEU:HD11	1.95	0.47
1:A:1173:GLU:HG2	1:B:1158:VAL:HG11	1.96	0.47
1:A:398:VAL:HG23	1:A:399:THR:N	2.28	0.47
1:A:687:GLU:H	1:A:687:GLU:CD	2.17	0.47
1:A:635:THR:CG2	1:A:636:ASN:N	2.77	0.47

Continued on next page...

Continued from previous page...

Atom-1	Atom-2	Distance(Å)	Clash(Å)
1:A:12:THR:HG21	7:A:2004:HOH:O	2.15	0.47
1:B:1026:ALA:O	1:B:1030:MET:HG3	2.14	0.47
1:B:1077:ARG:HB3	1:B:1077:ARG:NH1	2.29	0.47
1:A:1226:LEU:O	1:A:1230:THR:HG23	2.14	0.47
1:B:4:LYS:HB3	1:B:4:LYS:NZ	2.29	0.47
1:A:121:LEU:HD23	1:A:122:SER:N	2.30	0.47
1:A:276:MET:HB2	1:A:302:VAL:CG2	2.44	0.47
1:B:1107:ALA:HB2	1:B:1175:PHE:HB3	1.97	0.47
1:A:491:ASN:HD22	1:A:492:PRO:HD2	1.79	0.47
1:B:937:GLN:O	1:B:938:LYS:HD2	2.15	0.47
1:B:396:ASP:OD2	1:B:398:VAL:HG22	2.14	0.47
1:B:346:SER:HA	1:B:349:VAL:HG22	1.97	0.47
1:B:573:VAL:HG23	1:B:574:LEU:HG	1.95	0.47
1:A:971:TYR:OH	1:A:1028:MET:HE2	2.14	0.47
1:A:289:HIS:ND1	1:A:290:LEU:HD12	2.30	0.47
1:B:1055:GLU:O	1:B:1104:ARG:NH1	2.39	0.47
1:A:239:VAL:CG2	1:A:307:PRO:HG2	2.45	0.47
1:B:491:ASN:HD22	1:B:492:PRO:CD	2.27	0.47
1:B:692:CYS:O	1:B:693:ASN:HB2	2.15	0.47
1:A:243:VAL:O	1:A:247:MET:HG3	2.15	0.47
1:A:1092:LYS:HB3	1:A:1121:ASP:OD2	2.14	0.47
1:A:912:GLY:HA3	1:A:926:TYR:CD2	2.50	0.47
1:A:679:ILE:HD11	1:B:1216:ARG:HH22	1.80	0.47
1:B:389:HIS:HD2	7:B:2123:HOH:O	1.98	0.47
1:A:1165:HIS:CE1	1:B:1165:HIS:CE1	3.03	0.47
1:A:754:ILE:CD1	1:A:1084:GLN:HB2	2.45	0.46
1:B:483:ARG:HA	1:B:503:GLY:O	2.15	0.46
1:A:1201:PRO:HD3	1:B:455:TYR:HB2	1.97	0.46
1:B:276:MET:HB2	1:B:302:VAL:HG21	1.98	0.46
1:B:485:ASP:O	1:B:509:THR:HG22	2.15	0.46
1:A:429:GLY:HA2	1:B:1209:GLY:O	2.14	0.46
1:B:115:ALA:HB2	1:B:126:ASP:OD1	2.15	0.46
1:B:1026:ALA:O	1:B:1029:VAL:HG22	2.15	0.46
1:B:390:PHE:CD1	1:B:392:VAL:HG23	2.51	0.46
1:B:2:GLY:N	1:B:187:ASP:OD2	2.48	0.46
1:A:575:PRO:HD2	1:A:578:LYS:HD3	1.97	0.46
1:A:591:TYR:HD1	1:A:593:LYS:NZ	2.13	0.46
1:A:27:ILE:HG13	7:A:2068:HOH:O	2.16	0.46
1:A:1165:HIS:CD2	1:B:1171:ILE:HD12	2.50	0.46
1:B:698:VAL:HG11	1:B:1084:GLN:HG3	1.98	0.46
1:A:357:LYS:HD3	1:A:386:LYS:HD3	1.97	0.46
1:A:643:VAL:HG23	1:A:849:PRO:HG2	1.98	0.46

Continued on next page...

Continued from previous page...

Atom-1	Atom-2	Distance(Å)	Clash(Å)
1:A:758:LYS:HZ2	1:A:758:LYS:HB2	1.79	0.46
1:B:163:SER:O	1:B:164:ASN:HB2	2.15	0.46
1:A:1200:THR:HG21	1:A:1202:MET:CE	2.46	0.46
1:A:1200:THR:HG23	1:A:1201:PRO:CD	2.41	0.46
1:A:1132:ASN:OD1	1:A:1136:VAL:CG2	2.64	0.46
1:A:22:SER:OG	1:A:82:THR:CG2	2.63	0.46
1:A:561:MET:O	1:A:561:MET:HE3	2.16	0.46
1:A:883:MET:CE	1:A:955:LYS:HG3	2.45	0.46
1:B:600:LYS:HE3	1:B:604:ASP:OD2	2.16	0.46
1:A:441:ILE:HD13	1:A:573:VAL:HG21	1.98	0.46
1:B:398:VAL:HG23	1:B:399:THR:N	2.31	0.46
1:A:431:VAL:CG2	1:A:464:THR:HG21	2.46	0.46
1:B:778:LEU:HD13	1:B:778:LEU:C	2.36	0.46
1:A:229:ARG:HE	1:B:128:GLN:NE2	2.14	0.46
1:A:1006:PRO:HG2	1:A:1009:ALA:HB2	1.98	0.46
1:B:720:ASN:N	1:B:720:ASN:HD22	2.14	0.46
1:A:1200:THR:HG21	1:A:1202:MET:HE3	1.98	0.46
1:A:467:HIS:CD2	1:A:481:VAL:H	2.34	0.46
1:B:240:PRO:HB3	1:B:309:VAL:HG21	1.96	0.45
1:A:210:PRO:HG3	1:B:955:LYS:HD2	1.98	0.45
1:A:796:LEU:HD23	1:A:796:LEU:C	2.36	0.45
1:A:635:THR:HG23	1:A:636:ASN:N	2.31	0.45
1:A:667:LEU:HB3	1:A:854:LYS:HA	1.97	0.45
1:A:389:HIS:HE1	1:B:350:GLU:OE2	1.99	0.45
1:B:346:SER:O	1:B:349:VAL:HG22	2.17	0.45
1:A:229:ARG:HE	1:B:128:GLN:HE22	1.63	0.45
1:A:1055:GLU:O	1:A:1104:ARG:NH1	2.47	0.45
1:B:1219:THR:HG22	1:B:1221:GLU:OE1	2.16	0.45
1:B:269:ALA:HA	1:B:296:LYS:HB3	1.98	0.45
1:B:124:PHE:HB3	1:B:367:SER:HB2	1.98	0.45
1:A:180:ILE:HG23	1:A:451:GLY:CA	2.46	0.45
1:B:720:ASN:ND2	1:B:720:ASN:H	2.15	0.45
1:B:1132:ASN:CG	1:B:1136:VAL:HG13	2.36	0.45
1:B:714:LEU:HD12	1:B:714:LEU:N	2.32	0.45
1:B:361:GLY:HA3	1:B:390:PHE:CE1	2.51	0.45
1:B:1193:GLU:OE2	1:B:1193:GLU:N	2.50	0.45
1:B:1077:ARG:HB3	1:B:1077:ARG:HH11	1.81	0.45
1:A:227:GLN:HE21	1:A:227:GLN:N	2.11	0.45
1:A:190:ASP:O	1:A:194:LEU:HD23	2.17	0.45
1:B:1226:LEU:O	1:B:1230:THR:HG23	2.17	0.45
1:B:295:GLU:HG2	7:B:2333:HOH:O	2.17	0.45
1:A:779:GLU:O	1:A:783:ARG:HD3	2.16	0.45

Continued on next page...

Continued from previous page...

Atom-1	Atom-2	Distance(Å)	Clash(Å)
1:A:1080:MET:N	1:B:1215:ASN:ND2	2.58	0.45
1:A:227:GLN:HE22	1:B:368:LYS:NZ	2.14	0.45
1:A:422:PHE:O	1:A:465:ILE:HD12	2.17	0.45
1:A:759:GLU:O	1:A:759:GLU:HG2	2.17	0.45
1:A:1221:GLU:HG3	7:B:2753:HOH:O	2.17	0.45
1:B:635:THR:HG23	1:B:640:LYS:HG3	1.98	0.45
1:A:56:LEU:HD23	1:A:58:ILE:CD1	2.44	0.44
1:B:495:VAL:HG13	1:B:530:ILE:HD12	2.00	0.44
1:A:26:ALA:HB3	1:A:71:VAL:HG23	1.98	0.44
1:A:1012:LYS:O	1:A:1013:PHE:HB2	2.18	0.44
1:A:426:GLY:O	1:A:427:ALA:HB3	2.17	0.44
1:A:1199:ASP:CG	1:A:1214:GLN:HE22	2.20	0.44
1:B:1200:THR:HG21	1:B:1202:MET:HE3	1.99	0.44
1:B:233:ASN:HB2	1:B:234:PRO:HD3	1.99	0.44
1:A:558:ARG:CG	1:A:560:ASN:ND2	2.74	0.44
1:A:737:ARG:HE	1:A:739:GLN:NE2	2.15	0.44
1:A:1219:THR:CG2	1:A:1220:SER:N	2.80	0.44
1:B:142:ALA:HB2	1:B:170:PHE:CZ	2.53	0.44
1:A:771:ARG:O	1:A:775:VAL:HG23	2.17	0.44
1:A:961:GLY:HA3	1:A:965:TRP:CE3	2.51	0.44
1:A:1040:VAL:HG12	1:A:1048:GLN:HE22	1.81	0.44
1:A:465:ILE:HG21	7:A:2419:HOH:O	2.17	0.44
1:A:290:LEU:HD11	1:A:409:PHE:HZ	1.82	0.44
1:A:720:ASN:ND2	1:A:720:ASN:H	2.15	0.44
1:A:775:VAL:N	1:A:776:PRO:HD2	2.32	0.44
1:A:20:ALA:HB2	1:A:188:TYR:CZ	2.52	0.44
1:A:683:GLN:NE2	1:A:765:GLN:HG3	2.32	0.44
1:A:501:LEU:HD12	1:A:501:LEU:N	2.33	0.44
1:B:194:LEU:HD11	1:B:253:LEU:HD11	2.00	0.44
1:A:683:GLN:HE21	1:A:765:GLN:HG3	1.83	0.44
1:A:22:SER:OG	1:A:82:THR:HG23	2.17	0.44
1:A:439:LYS:N	1:A:439:LYS:HE3	2.33	0.44
1:A:1156:LEU:HD12	1:A:1156:LEU:C	2.38	0.44
1:B:465:ILE:HG13	1:B:467:HIS:CE1	2.52	0.44
1:A:1165:HIS:CE1	1:B:1165:HIS:HE1	2.34	0.44
1:A:684:TRP:CZ3	1:A:686:PRO:HG3	2.52	0.44
1:B:486:TYR:OH	1:B:511:VAL:HG11	2.18	0.44
1:B:699:CYS:HA	1:B:700:PRO:HD3	1.79	0.44
1:B:263:TYR:OH	1:B:298:GLY:HA3	2.18	0.44
1:A:1123:SER:O	1:A:1126:GLU:HG2	2.18	0.44
1:A:794:ASP:OD1	1:A:1054:LYS:HD2	2.17	0.44
1:B:14:THR:OG1	1:B:36:MET:SD	2.74	0.44

Continued on next page...

Continued from previous page...

Atom-1	Atom-2	Distance(Å)	Clash(Å)
1:B:87:SER:HA	1:B:129:ASP:HB3	2.00	0.44
1:B:154:LEU:HD22	1:B:158:LEU:CD1	2.48	0.44
1:A:32:PRO:HB2	1:A:178:HIS:CE1	2.53	0.44
1:B:667:LEU:HB3	1:B:854:LYS:HA	2.00	0.44
1:A:233:ASN:HD21	1:B:331:LYS:NZ	2.15	0.43
1:A:1219:THR:HG22	1:A:1221:GLU:H	1.82	0.43
1:A:8:THR:HB	1:A:12:THR:HG23	1.95	0.43
1:A:650:GLN:NE2	1:A:653:LYS:NZ	2.66	0.43
1:B:593:LYS:C	1:B:593:LYS:HD2	2.38	0.43
1:B:1219:THR:CG2	1:B:1220:SER:N	2.81	0.43
1:A:165:VAL:HG21	1:A:239:VAL:HG11	1.99	0.43
1:A:2:GLY:N	1:A:190:ASP:OD1	2.51	0.43
1:A:26:ALA:O	1:A:27:ILE:HD12	2.18	0.43
1:A:467:HIS:HD2	1:A:481:VAL:H	1.66	0.43
1:A:1159:ARG:O	1:A:1163:LEU:HG	2.18	0.43
1:A:495:VAL:HG11	1:A:526:LEU:HD12	2.00	0.43
1:A:583:LEU:HD23	1:A:583:LEU:O	2.17	0.43
1:A:143:SER:OG	1:A:171:PHE:HB3	2.18	0.43
1:A:1015:ALA:HB3	1:B:1185:SER:HB2	2.00	0.43
1:B:190:ASP:O	1:B:194:LEU:HD13	2.19	0.43
1:A:955:LYS:HD2	1:B:210:PRO:HG3	2.00	0.43
1:A:1157:ASP:O	1:A:1161:LYS:HG3	2.19	0.43
1:B:978:LEU:O	1:B:1062:PRO:HG2	2.19	0.43
1:B:695:CYS:HB2	1:B:704:ILE:HD13	2.01	0.43
1:A:897:ALA:HB2	1:A:941:LEU:CD2	2.49	0.43
1:B:1012:LYS:O	1:B:1013:PHE:HB2	2.19	0.43
1:A:62:GLN:HB3	1:B:976:HIS:CG	2.53	0.43
1:B:691:GLN:HE22	1:B:727:LYS:N	2.12	0.43
1:B:1226:LEU:HD13	1:B:1229:ARG:HH22	1.83	0.43
1:A:436:GLN:O	1:A:440:ILE:HG13	2.19	0.43
1:B:1076:LEU:HD13	1:B:1086:VAL:HG21	1.99	0.43
1:B:91:LEU:HD11	1:B:116:ILE:HD12	2.00	0.43
1:A:1198:ASP:OD2	1:A:1200:THR:HB	2.18	0.43
1:A:637:GLU:N	1:A:638:PHE:N	2.66	0.43
1:B:803:GLU:O	1:B:805:LEU:HD13	2.19	0.43
1:A:688:ASN:HB3	1:A:759:GLU:O	2.19	0.43
1:B:491:ASN:HD22	1:B:491:ASN:C	2.21	0.43
1:A:536:ASN:HD22	1:A:623:LYS:HG2	1.84	0.43
1:B:720:ASN:H	1:B:720:ASN:HD22	1.67	0.43
1:A:699:CYS:HA	1:A:700:PRO:HD3	1.83	0.43
1:A:675:ARG:HD3	7:A:2519:HOH:O	2.17	0.43
1:B:779:GLU:HB3	1:B:783:ARG:HH21	1.83	0.43

Continued on next page...

Continued from previous page...

Atom-1	Atom-2	Distance(Å)	Clash(Å)
1:B:198:LYS:HZ2	1:B:198:LYS:H	1.67	0.43
1:A:1000:GLN:HA	1:A:1012:LYS:HB2	2.00	0.43
1:A:701:HIS:CE1	1:A:746:MET:HG3	2.54	0.43
1:B:1137:LEU:HD12	1:B:1145:ALA:CA	2.49	0.43
1:A:398:VAL:CG2	7:B:2250:HOH:O	2.67	0.43
1:A:976:HIS:HD2	1:B:1003:LYS:HZ2	1.66	0.43
1:A:371:SER:HB2	1:A:372:PRO:HD2	2.01	0.43
1:A:431:VAL:O	1:A:435:LYS:HG3	2.19	0.43
1:B:750:ASN:HD21	1:B:1083:SER:HB2	1.84	0.43
1:B:1200:THR:HG23	1:B:1201:PRO:CD	2.49	0.42
1:B:239:VAL:HG13	1:B:240:PRO:CD	2.41	0.42
1:B:14:THR:CG2	1:B:149:ALA:HB1	2.48	0.42
1:A:573:VAL:HG12	7:A:2465:HOH:O	2.17	0.42
1:B:839:GLY:HA2	3:B:2236:HTL:S1	2.59	0.42
1:B:1045:SER:HA	1:B:1047:GLN:HE22	1.84	0.42
1:A:839:GLY:O	1:A:843:ILE:HG12	2.19	0.42
1:B:1132:ASN:OD1	1:B:1136:VAL:CG1	2.67	0.42
1:B:650:GLN:NE2	1:B:653:LYS:NZ	2.67	0.42
1:B:180:ILE:HG22	1:B:451:GLY:O	2.18	0.42
1:A:673:GLU:O	1:A:674:LYS:C	2.57	0.42
1:A:609:ALA:O	1:A:613:LEU:HB2	2.19	0.42
1:A:495:VAL:HG13	1:A:530:ILE:CD1	2.49	0.42
1:A:720:ASN:H	1:A:720:ASN:HD22	1.67	0.42
1:A:650:GLN:HE22	1:A:653:LYS:HZ1	1.67	0.42
1:A:542:TYR:CD2	1:A:570:LEU:HD21	2.54	0.42
1:A:164:ASN:ND2	1:A:206:LYS:NZ	2.66	0.42
1:B:1228:LYS:O	1:B:1231:LYS:HG3	2.19	0.42
1:B:698:VAL:HG13	7:B:2721:HOH:O	2.18	0.42
1:B:98:TYR:OH	1:B:135:GLN:HG2	2.18	0.42
1:A:1229:ARG:HH12	1:B:765:GLN:HE22	1.66	0.42
1:A:881:MET:HE3	1:B:59:ARG:HB2	2.02	0.42
1:A:85:THR:O	1:A:86:ALA:HB2	2.19	0.42
1:A:792:PRO:HB2	1:A:795:SER:HB3	2.02	0.42
7:A:2322:HOH:O	1:B:350:GLU:HG2	2.19	0.42
1:B:355:MET:HE2	7:B:2386:HOH:O	2.18	0.42
1:B:111:VAL:HG21	1:B:130:ILE:HG22	2.00	0.42
1:B:180:ILE:HG23	1:B:451:GLY:N	2.35	0.42
1:A:636:ASN:ND2	1:A:672:PHE:HE1	2.16	0.42
1:A:1132:ASN:CG	1:A:1136:VAL:CG2	2.88	0.42
1:B:198:LYS:CE	1:B:198:LYS:H	2.33	0.42
1:A:1118:LYS:HE3	7:A:2780:HOH:O	2.19	0.42
1:A:897:ALA:HB2	1:A:941:LEU:HD22	2.02	0.42

Continued on next page...

Continued from previous page...

Atom-1	Atom-2	Distance(Å)	Clash(Å)
1:A:808:PHE:CD2	1:A:808:PHE:N	2.88	0.42
1:B:561:MET:HE3	1:B:561:MET:O	2.20	0.42
1:A:692:CYS:O	1:A:693:ASN:HB2	2.20	0.42
1:B:317:LEU:HD23	1:B:318:PRO:HD2	2.01	0.42
1:A:636:ASN:O	1:A:640:LYS:HG3	2.20	0.42
1:B:779:GLU:HB3	1:B:783:ARG:NH2	2.35	0.42
1:B:808:PHE:N	1:B:808:PHE:CD2	2.86	0.42
1:A:727:LYS:HB3	1:A:727:LYS:NZ	2.35	0.42
1:A:1080:MET:N	1:B:1215:ASN:HD21	2.10	0.42
1:B:803:GLU:OE1	1:B:856:ASN:HB2	2.20	0.42
1:A:210:PRO:CG	1:B:955:LYS:HD2	2.50	0.42
1:A:976:HIS:CE1	1:B:61:MET:HA	2.54	0.42
1:A:286:VAL:O	1:A:290:LEU:HD13	2.20	0.42
1:B:650:GLN:HE22	1:B:653:LYS:HZ3	1.68	0.42
1:A:595:GLY:C	1:A:597:LYS:H	2.23	0.42
1:B:143:SER:HB3	1:B:169:HIS:HE1	1.84	0.41
1:B:949:SER:HA	1:B:952:TYR:CE2	2.55	0.41
1:A:181:GLN:HA	1:A:449:ALA:O	2.20	0.41
1:B:488:ALA:HA	1:B:511:VAL:HG13	2.02	0.41
1:A:302:VAL:O	1:A:302:VAL:HG23	2.19	0.41
1:A:371:SER:HB2	1:A:372:PRO:CD	2.50	0.41
1:A:1077:ARG:HG3	1:B:1193:GLU:CD	2.40	0.41
1:B:4:LYS:HZ3	1:B:185:VAL:HG23	1.84	0.41
1:B:1198:ASP:OD2	1:B:1200:THR:HB	2.20	0.41
1:B:56:LEU:HG	1:B:58:ILE:CG1	2.50	0.41
1:B:755:CYS:SG	1:B:761:ALA:HB3	2.60	0.41
1:B:953:THR:HG22	7:B:2882:HOH:O	2.20	0.41
1:A:239:VAL:HG23	1:A:240:PRO:CD	2.51	0.41
1:B:135:GLN:H	1:B:135:GLN:NE2	2.17	0.41
1:B:198:LYS:NZ	1:B:198:LYS:H	2.17	0.41
1:B:741:ASN:C	1:B:741:ASN:HD22	2.23	0.41
1:A:396:ASP:OD2	1:A:398:VAL:CG2	2.68	0.41
1:A:358:ILE:C	1:A:359:LEU:HD12	2.41	0.41
1:A:24:VAL:HG13	1:B:881:MET:HE1	2.01	0.41
1:A:1136:VAL:HG22	1:A:1139:ARG:NH1	2.36	0.41
1:A:130:ILE:O	1:A:140:MET:HE3	2.20	0.41
1:A:349:VAL:HG23	1:A:350:GLU:N	2.35	0.41
1:A:720:ASN:ND2	1:A:720:ASN:N	2.68	0.41
1:A:392:VAL:CG2	1:A:403:LEU:HD22	2.50	0.41
1:A:398:VAL:HG21	7:B:2250:HOH:O	2.20	0.41
1:A:986:VAL:O	1:A:986:VAL:HG23	2.20	0.41
1:B:789:GLU:N	1:B:789:GLU:OE2	2.54	0.41

Continued on next page...

Continued from previous page...

Atom-1	Atom-2	Distance(Å)	Clash(Å)
1:B:396:ASP:OD2	1:B:656:VAL:HG21	2.21	0.41
1:A:454:SER:HB2	1:A:465:ILE:HG22	2.00	0.41
1:B:302:VAL:O	1:B:302:VAL:HG23	2.21	0.41
1:B:823:VAL:CG2	1:B:1049:PHE:CE2	2.93	0.41
1:B:264:VAL:HG11	1:B:284:GLU:CG	2.44	0.41
1:B:289:HIS:ND1	1:B:290:LEU:HD12	2.36	0.41
1:A:594:LYS:HB2	1:A:598:ILE:HD12	2.02	0.41
1:B:276:MET:CB	1:B:302:VAL:CG2	2.97	0.41
1:B:737:ARG:HH11	1:B:739:GLN:NE2	2.17	0.41
1:B:198:LYS:HE3	1:B:198:LYS:H	1.86	0.41
1:A:571:ALA:HB3	7:A:2465:HOH:O	2.20	0.41
1:A:524:LYS:HB2	1:A:524:LYS:NZ	2.36	0.41
1:B:341:TYR:CD1	1:B:360:ALA:HB2	2.55	0.41
1:A:200:LEU:O	1:A:204:ARG:HG2	2.21	0.41
1:A:691:GLN:HG2	1:A:736:PHE:CD2	2.56	0.41
7:A:2197:HOH:O	1:B:398:VAL:HG21	2.21	0.41
1:B:180:ILE:O	1:B:450:GLN:HA	2.21	0.41
1:B:796:LEU:HD23	1:B:796:LEU:C	2.41	0.41
1:A:1159:ARG:HD3	7:A:2816:HOH:O	2.20	0.40
1:B:712:GLU:O	1:B:715:VAL:HG23	2.21	0.40
1:A:566:ALA:HA	1:A:613:LEU:CD2	2.50	0.40
1:B:111:VAL:HG22	1:B:170:PHE:CB	2.51	0.40
1:A:700:PRO:HG2	1:A:814:GLY:HA2	2.03	0.40
1:A:654:LEU:HD12	1:A:654:LEU:HA	1.91	0.40
1:A:874:GLU:HG2	1:B:66:GLY:HA2	2.03	0.40
1:B:497:ILE:HG13	1:B:498:TYR:CD1	2.55	0.40
1:B:1137:LEU:O	1:B:1137:LEU:HD13	2.21	0.40
1:A:233:ASN:HB2	1:A:234:PRO:HD3	2.02	0.40
1:B:755:CYS:HA	1:B:756:PRO:HD3	1.87	0.40
1:B:688:ASN:HB3	1:B:759:GLU:O	2.20	0.40
1:B:1094:GLY:HA3	1:B:1120:PRO:HG3	2.04	0.40
1:A:263:TYR:OH	1:A:298:GLY:HA3	2.21	0.40
1:B:869:PHE:CE2	1:B:969:ILE:HG21	2.56	0.40
1:A:234:PRO:HD3	7:A:2197:HOH:O	2.20	0.40
1:B:382:MET:O	1:B:386:LYS:NZ	2.43	0.40
1:A:306:ARG:HA	1:A:307:PRO:C	2.40	0.40
1:A:488:ALA:CB	1:A:511:VAL:HG13	2.52	0.40
1:A:7:THR:HB	1:A:180:ILE:HD11	2.03	0.40
1:B:1180:GLY:O	1:B:1182:ALA:N	2.49	0.40
1:A:61:MET:HG3	1:A:67:ALA:HA	2.02	0.40
1:A:1119:ALA:HA	1:A:1160:PHE:CE2	2.57	0.40

There are no symmetry-related clashes.

5.3 Torsion angles

5.3.1 Protein backbone ⓘ

In the following table, the Percentiles column shows the percent Ramachandran outliers of the chain as a percentile score with respect to all X-ray entries followed by that with respect to entries of similar resolution. The Analysed column shows the number of residues for which the backbone conformation was analysed, and the total number of residues.

Mol	Chain	Analysed	Favoured	Allowed	Outliers	Percentiles	
1	A	1223/1231 (99%)	1166 (95%)	50 (4%)	7 (1%)	33	18
1	B	1221/1231 (99%)	1179 (97%)	34 (3%)	8 (1%)	30	14
All	All	2444/2462 (99%)	2345 (96%)	84 (3%)	15 (1%)	33	18

All (15) Ramachandran outliers are listed below:

Mol	Chain	Res	Type
1	A	732	LYS
1	A	576	PHE
1	A	629	THR
1	B	629	THR
1	B	732	LYS
1	B	1177	PRO
1	B	1178	ALA
1	A	630	LYS
1	A	1181	LYS
1	B	591	TYR
1	B	630	LYS
1	B	1174	SER
1	A	1178	ALA
1	A	1182	ALA
1	B	1182	ALA

5.3.2 Protein sidechains ⓘ

In the following table, the Percentiles column shows the percent sidechain outliers of the chain as a percentile score with respect to all X-ray entries followed by that with respect to entries of similar resolution. The Analysed column shows the number of residues for which the sidechain conformation was analysed, and the total number of residues.

Mol	Chain	Analysed	Rotameric	Outliers	Percentiles	
1	A	970/978 (99%)	936 (96%)	34 (4%)	48	31

Continued on next page...

Continued from previous page...

Mol	Chain	Analysed	Rotameric	Outliers	Percentiles	
1	B	971/978 (99%)	931 (96%)	40 (4%)	41	24
All	All	1941/1956 (99%)	1867 (96%)	74 (4%)	44	28

All (74) residues with a non-rotameric sidechain are listed below:

Mol	Chain	Res	Type
1	A	141	LEU
1	A	154	LEU
1	A	180	ILE
1	A	181	GLN
1	A	211	GLU
1	A	226	PHE
1	A	227	GLN
1	A	324	ILE
1	A	327	LEU
1	A	439	LYS
1	A	491	ASN
1	A	509	THR
1	A	538	LYS
1	A	635	THR
1	A	654	LEU
1	A	720	ASN
1	A	741	ASN
1	A	759	GLU
1	A	765	GLN
1	A	808	PHE
1	A	849	PRO
1	A	880	ASN
1	A	893	LEU
1	A	910	LEU
1	A	914	LEU
1	A	953	THR
1	A	1000	GLN
1	A	1047	GLN
1	A	1048	GLN
1	A	1064	LEU
1	A	1088	ASN
1	A	1137	LEU
1	A	1183	ASP
1	A	1207	ASP
1	B	141	LEU
1	B	154	LEU

Continued on next page...

Continued from previous page...

Mol	Chain	Res	Type
1	B	181	GLN
1	B	198	LYS
1	B	211	GLU
1	B	226	PHE
1	B	227	GLN
1	B	303	ARG
1	B	317	LEU
1	B	327	LEU
1	B	342	LEU
1	B	359	LEU
1	B	491	ASN
1	B	570	LEU
1	B	582	LEU
1	B	583	LEU
1	B	593	LYS
1	B	613	LEU
1	B	636	ASN
1	B	637	GLU
1	B	643	VAL
1	B	654	LEU
1	B	720	ASN
1	B	730	GLU
1	B	741	ASN
1	B	754	ILE
1	B	765	GLN
1	B	808	PHE
1	B	849	PRO
1	B	858	LEU
1	B	910	LEU
1	B	953	THR
1	B	1000	GLN
1	B	1047	GLN
1	B	1048	GLN
1	B	1064	LEU
1	B	1077	ARG
1	B	1088	ASN
1	B	1115	LEU
1	B	1137	LEU

Some sidechains can be flipped to improve hydrogen bonding and reduce clashes. All (108) such sidechains are listed below:

Mol	Chain	Res	Type
1	A	11	ASN
1	A	16	HIS
1	A	46	GLN
1	A	110	HIS
1	A	128	GLN
1	A	135	GLN
1	A	147	GLN
1	A	164	ASN
1	A	169	HIS
1	A	181	GLN
1	A	212	HIS
1	A	220	GLN
1	A	221	ASN
1	A	227	GLN
1	A	233	ASN
1	A	288	ASN
1	A	389	HIS
1	A	421	GLN
1	A	434	ASN
1	A	467	HIS
1	A	491	ASN
1	A	513	ASN
1	A	536	ASN
1	A	560	ASN
1	A	602	ASN
1	A	608	GLN
1	A	636	ASN
1	A	641	ASN
1	A	650	GLN
1	A	683	GLN
1	A	688	ASN
1	A	691	GLN
1	A	693	ASN
1	A	720	ASN
1	A	739	GLN
1	A	741	ASN
1	A	750	ASN
1	A	765	GLN
1	A	774	GLN
1	A	777	ASN
1	A	836	ASN
1	A	860	GLN
1	A	866	ASN

Continued on next page...

Continued from previous page...

Mol	Chain	Res	Type
1	A	880	ASN
1	A	918	ASN
1	A	976	HIS
1	A	1000	GLN
1	A	1047	GLN
1	A	1048	GLN
1	A	1084	GLN
1	A	1088	ASN
1	A	1108	GLN
1	A	1132	ASN
1	A	1165	HIS
1	A	1215	ASN
1	B	11	ASN
1	B	16	HIS
1	B	46	GLN
1	B	96	ASN
1	B	110	HIS
1	B	128	GLN
1	B	135	GLN
1	B	147	GLN
1	B	164	ASN
1	B	169	HIS
1	B	181	GLN
1	B	212	HIS
1	B	220	GLN
1	B	221	ASN
1	B	227	GLN
1	B	233	ASN
1	B	288	ASN
1	B	389	HIS
1	B	421	GLN
1	B	434	ASN
1	B	467	HIS
1	B	491	ASN
1	B	513	ASN
1	B	536	ASN
1	B	636	ASN
1	B	650	GLN
1	B	683	GLN
1	B	688	ASN
1	B	691	GLN
1	B	693	ASN

Continued on next page...

Continued from previous page...

Mol	Chain	Res	Type
1	B	720	ASN
1	B	739	GLN
1	B	741	ASN
1	B	750	ASN
1	B	765	GLN
1	B	774	GLN
1	B	777	ASN
1	B	836	ASN
1	B	860	GLN
1	B	866	ASN
1	B	918	ASN
1	B	937	GLN
1	B	976	HIS
1	B	1000	GLN
1	B	1047	GLN
1	B	1048	GLN
1	B	1084	GLN
1	B	1088	ASN
1	B	1108	GLN
1	B	1132	ASN
1	B	1151	GLN
1	B	1165	HIS
1	B	1215	ASN

5.3.3 RNA ⓘ

There are no RNA chains in this entry.

5.4 Non-standard residues in protein, DNA, RNA chains ⓘ

There are no non-standard protein/DNA/RNA residues in this entry.

5.5 Carbohydrates ⓘ

There are no carbohydrates in this entry.

5.6 Ligand geometry ⓘ

Of 14 ligands modelled in this entry, 4 are monoatomic - leaving 10 for Mogul analysis.

In the following table, the Counts columns list the number of bonds (or angles) for which Mogul statistics could be retrieved, the number of bonds (or angles) that are observed in the model and the number of bonds (or angles) that are defined in the chemical component dictionary. The Link column lists molecule types, if any, to which the group is linked. The Z score for a bond length (or angle) is the number of standard deviations the observed value is removed from the expected value. A bond length (or angle) with $|Z| > 2$ is considered an outlier worth inspection. RMSZ is the root-mean-square of all Z scores of the bond lengths (or angles).

Mol	Type	Chain	Res	Link	Bond lengths			Bond angles		
					Counts	RMSZ	# Z > 2	Counts	RMSZ	# Z > 2
2	SF4	A	2233	1	12,12,12	4.78	11 (91%)	0,24,24	0.00	-
2	SF4	A	2234	1	12,12,12	4.70	11 (91%)	0,24,24	0.00	-
2	SF4	A	2235	1	12,12,12	4.32	11 (91%)	0,24,24	0.00	-
3	HTL	A	2236	4	30,30,30	4.26	13 (43%)	42,45,45	3.16	15 (35%)
6	CO2	A	2239	-	0,2,2	0.00	-	0,1,1	0.00	-
2	SF4	B	2233	1	12,12,12	4.90	11 (91%)	0,24,24	0.00	-
2	SF4	B	2234	1	12,12,12	5.04	11 (91%)	0,24,24	0.00	-
2	SF4	B	2235	1	12,12,12	5.81	10 (83%)	0,24,24	0.00	-
3	HTL	B	2236	4	30,30,30	4.65	13 (43%)	42,45,45	3.51	13 (30%)
6	CO2	B	2239	-	0,2,2	0.00	-	0,1,1	0.00	-

In the following table, the Chirals column lists the number of chiral outliers, the number of chiral centers analysed, the number of these observed in the model and the number defined in the chemical component dictionary. Similar counts are reported in the Torsion and Rings columns. '-' means no outliers of that kind were identified.

Mol	Type	Chain	Res	Link	Chirals	Torsions	Rings
2	SF4	A	2233	1	-	0/0/48/48	0/0/5/5
2	SF4	A	2234	1	-	0/0/48/48	0/0/5/5
2	SF4	A	2235	1	-	0/0/48/48	0/0/5/5
3	HTL	A	2236	4	-	0/17/21/21	0/2/2/2
6	CO2	A	2239	-	-	0/0/0/0	0/0/0/0
2	SF4	B	2233	1	-	0/0/48/48	0/0/5/5
2	SF4	B	2234	1	-	0/0/48/48	0/0/5/5
2	SF4	B	2235	1	-	0/0/48/48	0/0/5/5
3	HTL	B	2236	4	-	0/17/21/21	0/2/2/2
6	CO2	B	2239	-	-	0/0/0/0	0/0/0/0

All (91) bond length outliers are listed below:

Mol	Chain	Res	Type	Atoms	Z	Observed(Å)	Ideal(Å)
3	B	2236	HTL	C5-C4	15.06	1.54	1.36
2	B	2235	SF4	S3-FE1	-12.86	2.24	2.33

Continued on next page...

Continued from previous page...

Mol	Chain	Res	Type	Atoms	Z	Observed(Å)	Ideal(Å)
3	A	2236	HTL	C2-C1'	11.63	1.89	1.49
3	A	2236	HTL	C5-C4	11.59	1.50	1.36
3	B	2236	HTL	C2-C1'	10.74	1.86	1.49
3	B	2236	HTL	C2'-N1'	8.11	1.48	1.34
3	A	2236	HTL	C2-N3	8.06	1.58	1.39
3	B	2236	HTL	C2-N3	7.95	1.58	1.39
2	B	2234	SF4	S3-FE1	-7.91	2.27	2.33
2	B	2234	SF4	S3-FE2	-7.61	2.28	2.33
2	B	2235	SF4	S3-FE2	-7.50	2.28	2.33
3	A	2236	HTL	C5A-C5	7.33	1.60	1.51
2	A	2233	SF4	S1-FE2	-7.22	2.28	2.33
3	B	2236	HTL	C4'-N3'	7.09	1.46	1.35
2	A	2233	SF4	S4-FE3	-7.03	2.28	2.33
2	B	2233	SF4	S4-FE3	-7.03	2.28	2.33
2	B	2233	SF4	S1-FE2	-6.99	2.28	2.33
2	A	2233	SF4	S1-FE4	-6.97	2.28	2.33
3	B	2236	HTL	C5A-C5	6.95	1.60	1.51
2	A	2234	SF4	S3-FE1	-6.78	2.28	2.33
2	B	2233	SF4	S1-FE4	-6.76	2.28	2.33
2	A	2234	SF4	S3-FE2	-6.68	2.28	2.33
2	B	2234	SF4	S3-FE4	-6.39	2.29	2.33
3	A	2236	HTL	C2'-N1'	6.18	1.45	1.34
2	A	2234	SF4	S1-FE3	-5.76	2.29	2.33
2	A	2233	SF4	S1-FE3	-5.76	2.29	2.33
2	B	2235	SF4	S2-FE4	-5.76	2.29	2.33
2	A	2235	SF4	S3-FE1	-5.76	2.29	2.33
2	A	2235	SF4	S3-FE4	-5.72	2.29	2.33
2	B	2235	SF4	S4-FE2	-5.68	2.29	2.33
2	B	2234	SF4	S4-FE1	-5.51	2.29	2.33
2	B	2235	SF4	S1-FE4	-5.45	2.29	2.33
2	A	2234	SF4	S2-FE1	-5.42	2.29	2.33
3	A	2236	HTL	C6'-N1'	5.42	1.46	1.34
2	B	2233	SF4	S2-FE1	-5.39	2.29	2.33
2	B	2233	SF4	S4-FE2	-5.37	2.29	2.33
3	A	2236	HTL	C4'-N3'	5.28	1.43	1.35
2	A	2235	SF4	S1-FE2	-5.24	2.29	2.33
2	B	2234	SF4	S4-FE2	-5.13	2.29	2.33
2	A	2233	SF4	S4-FE2	-4.91	2.30	2.33
2	B	2235	SF4	S3-FE4	-4.91	2.30	2.33
2	A	2233	SF4	S2-FE1	-4.79	2.30	2.33
2	A	2235	SF4	S4-FE1	-4.68	2.30	2.33
2	A	2234	SF4	S2-FE4	-4.58	2.30	2.33

Continued on next page...

Continued from previous page...

Mol	Chain	Res	Type	Atoms	Z	Observed(Å)	Ideal(Å)
2	A	2234	SF4	S4-FE3	-4.57	2.30	2.33
2	B	2234	SF4	S4-FE3	-4.57	2.30	2.33
2	A	2235	SF4	S3-FE2	-4.45	2.30	2.33
2	A	2235	SF4	S4-FE3	-4.44	2.30	2.33
2	B	2233	SF4	S2-FE3	-4.43	2.30	2.33
2	A	2234	SF4	S3-FE4	-4.42	2.30	2.33
2	B	2235	SF4	S1-FE2	-4.41	2.30	2.33
2	A	2234	SF4	S1-FE2	-4.32	2.30	2.33
2	B	2235	SF4	S1-FE3	-4.29	2.30	2.33
2	B	2234	SF4	S2-FE3	-4.27	2.30	2.33
2	B	2233	SF4	S3-FE4	-4.12	2.30	2.33
2	A	2233	SF4	S3-FE1	-4.03	2.30	2.33
2	B	2233	SF4	S4-FE1	-3.90	2.30	2.33
2	A	2234	SF4	S1-FE4	-3.88	2.30	2.33
2	A	2235	SF4	S1-FE3	-3.87	2.30	2.33
2	B	2233	SF4	S1-FE3	-3.86	2.30	2.33
2	A	2235	SF4	S4-FE2	-3.84	2.30	2.33
2	B	2234	SF4	S1-FE4	-3.81	2.30	2.33
2	A	2235	SF4	S1-FE4	-3.76	2.30	2.33
3	A	2236	HTL	C5-S1	3.72	1.80	1.73
3	B	2236	HTL	C6'-N1'	3.71	1.42	1.34
2	A	2235	SF4	S2-FE1	-3.69	2.30	2.33
2	B	2235	SF4	S4-FE1	-3.68	2.30	2.33
2	B	2234	SF4	S1-FE2	-3.65	2.30	2.33
2	B	2234	SF4	S2-FE4	-3.53	2.30	2.33
2	B	2233	SF4	S3-FE1	-3.28	2.31	2.33
3	B	2236	HTL	O2'-C1'	3.23	1.33	1.22
2	A	2233	SF4	S4-FE1	-3.17	2.31	2.33
3	A	2236	HTL	C5'-C4'	3.13	1.50	1.42
3	A	2236	HTL	O2'-C1'	3.06	1.33	1.22
2	A	2234	SF4	S4-FE2	-3.05	2.31	2.33
3	B	2236	HTL	C3'-C1'	3.00	1.59	1.49
2	A	2235	SF4	S2-FE4	-2.86	2.31	2.33
2	B	2235	SF4	S2-FE1	-2.82	2.31	2.33
3	B	2236	HTL	P2-O22	-2.82	1.44	1.54
3	A	2236	HTL	C6'-C5'	2.75	1.44	1.37
3	B	2236	HTL	C5'-C4'	2.71	1.49	1.42
3	B	2236	HTL	C5-S1	2.67	1.78	1.73
3	B	2236	HTL	C2'-N3'	2.39	1.38	1.34
2	B	2233	SF4	S2-FE4	-2.27	2.31	2.33
2	A	2233	SF4	S2-FE4	-2.27	2.31	2.33
2	A	2233	SF4	S2-FE3	-2.25	2.31	2.33

Continued on next page...

Continued from previous page...

Mol	Chain	Res	Type	Atoms	Z	Observed(Å)	Ideal(Å)
3	A	2236	HTL	C3'-C1'	2.17	1.56	1.49
2	A	2233	SF4	S3-FE4	-2.16	2.31	2.33
3	A	2236	HTL	C2'-N3'	2.11	1.38	1.34
2	B	2234	SF4	S2-FE1	-2.08	2.31	2.33
2	A	2234	SF4	S2-FE3	-2.01	2.31	2.33

All (28) bond angle outliers are listed below:

Mol	Chain	Res	Type	Atoms	Z	Observed(°)	Ideal(°)
3	B	2236	HTL	C5A-C5-C4	-16.18	115.67	127.44
3	A	2236	HTL	C5A-C5-C4	-14.31	117.03	127.44
3	B	2236	HTL	C5A-C5-S1	-9.32	108.35	120.74
3	A	2236	HTL	C5A-C5-S1	-6.59	111.98	120.74
3	B	2236	HTL	C2A-C2'-N1'	6.29	124.52	117.02
3	A	2236	HTL	C2A-C2'-N1'	5.27	123.30	117.02
3	B	2236	HTL	N1'-C2'-N3'	-4.35	117.81	125.65
3	A	2236	HTL	C5-S1-C2	-4.23	88.83	96.33
3	A	2236	HTL	C1'-C2-S1	4.02	119.85	118.69
3	B	2236	HTL	C4A-C4-N3	3.97	127.69	122.69
3	B	2236	HTL	C5-S1-C2	-3.83	89.53	96.33
3	A	2236	HTL	C4A-C4-N3	3.72	127.37	122.69
3	A	2236	HTL	N1'-C2'-N3'	-3.63	119.11	125.65
3	A	2236	HTL	C5'-C35-N3	-3.49	107.34	113.26
3	B	2236	HTL	C35-N3-C2	-3.46	116.86	124.60
3	B	2236	HTL	C5'-C35-N3	-3.19	107.85	113.26
3	A	2236	HTL	C35-N3-C2	-3.11	117.65	124.60
3	B	2236	HTL	C1'-C2-S1	-2.86	117.87	118.69
3	B	2236	HTL	O5G-C5B-C5A	2.66	120.31	109.09
3	B	2236	HTL	C6'-N1'-C2'	2.65	120.33	115.68
3	A	2236	HTL	O5G-C5B-C5A	2.60	120.07	109.09
3	A	2236	HTL	O22-P2-O21	2.58	118.87	110.44
3	A	2236	HTL	C2'-N3'-C4'	2.41	122.74	118.18
3	A	2236	HTL	O2'-C1'-C3'	-2.29	114.44	120.13
3	B	2236	HTL	C35-N3-C4	-2.14	119.95	124.34
3	B	2236	HTL	O22-P2-O21	2.12	117.36	110.44
3	A	2236	HTL	C4A-C4-C5	-2.10	123.85	129.10
3	A	2236	HTL	C4-N3-C2	2.00	109.84	108.61

There are no chirality outliers.

There are no torsion outliers.

There are no ring outliers.

5.7 Other polymers ⓘ

There are no such residues in this entry.

5.8 Polymer linkage issues

There are no chain breaks in this entry.

6 Fit of model and data ⓘ

6.1 Protein, DNA and RNA chains ⓘ

In the following table, the column labelled ‘#RSRZ > 2’ contains the number (and percentage) of RSRZ outliers, followed by percent RSRZ outliers for the chain as percentile scores relative to all X-ray entries and entries of similar resolution. The OWAB column contains the minimum, median, 95th percentile and maximum values of the occupancy-weighted average B-factor per residue. The column labelled ‘Q < 0.9’ lists the number of (and percentage) of residues with an average occupancy less than 0.9.

Mol	Chain	Analysed	<RSRZ>	#RSRZ > 2		OWAB(Å ²)	Q < 0.9
1	A	1231/1231 (100%)	0.07	72 (5%)	22 26	8, 19, 49, 97	0
1	B	1230/1231 (99%)	-0.11	37 (3%)	48 54	8, 17, 39, 87	0
All	All	2461/2462 (99%)	-0.02	109 (4%)	33 36	8, 18, 46, 97	0

All (109) RSRZ outliers are listed below:

Mol	Chain	Res	Type	RSRZ
1	B	595	GLY	7.9
1	B	1176	ALA	7.8
1	A	1176	ALA	7.4
1	A	1178	ALA	7.3
1	A	629	THR	7.1
1	B	631	ALA	6.7
1	B	1181	LYS	6.6
1	A	1179	GLY	6.5
1	A	1232	LYS	6.5
1	A	1177	PRO	6.5
1	B	1178	ALA	6.2
1	A	631	ALA	5.9
1	A	593	LYS	5.9
1	B	629	THR	5.9
1	B	1174	SER	5.6
1	A	595	GLY	5.5
1	B	594	LYS	5.5
1	B	593	LYS	5.5
1	B	1177	PRO	5.4
1	A	633	PRO	5.2
1	B	1183	ASP	5.1
1	A	594	LYS	5.1
1	B	1175	PHE	5.0
1	B	628	GLU	5.0

Continued on next page...

Continued from previous page...

Mol	Chain	Res	Type	RSRZ
1	A	632	GLU	4.7
1	A	597	LYS	4.7
1	A	630	LYS	4.7
1	B	632	GLU	4.6
1	B	715	VAL	4.6
1	B	1179	GLY	4.5
1	A	635	THR	4.4
1	A	627	ALA	4.3
1	A	1231	LYS	4.1
1	A	628	GLU	3.9
1	B	1231	LYS	3.8
1	A	634	MET	3.8
1	A	520	GLU	3.8
1	A	1181	LYS	3.8
1	A	1175	PHE	3.7
1	B	1172	PHE	3.7
1	A	577	GLU	3.6
1	B	1180	GLY	3.5
1	A	1230	THR	3.5
1	A	711	GLU	3.5
1	A	589	LYS	3.4
1	A	758	LYS	3.3
1	A	596	GLU	3.2
1	B	354	ALA	3.2
1	B	1182	ALA	3.2
1	A	1180	GLY	3.1
1	A	715	VAL	3.1
1	A	636	ASN	3.1
1	A	624	ASP	3.1
1	B	590	ALA	3.1
1	B	633	PRO	3.0
1	A	590	ALA	3.0
1	A	712	GLU	3.0
1	B	716	GLY	3.0
1	A	601	MET	3.0
1	A	617	LYS	3.0
1	A	496	GLY	2.9
1	A	576	PHE	2.9
1	A	1172	PHE	2.9
1	A	1174	SER	2.8
1	B	596	GLU	2.8
1	B	1230	THR	2.8

Continued on next page...

Continued from previous page...

Mol	Chain	Res	Type	RSRZ
1	A	619	PRO	2.8
1	B	589	LYS	2.8
1	A	759	GLU	2.7
1	A	1170	ASN	2.7
1	A	1228	LYS	2.7
1	A	789	GLU	2.6
1	A	620	ASP	2.6
1	A	1182	ALA	2.5
1	B	591	TYR	2.5
1	A	554	GLY	2.4
1	A	936	GLY	2.4
1	A	591	TYR	2.4
1	A	581	ASP	2.4
1	B	636	ASN	2.4
1	B	758	LYS	2.4
1	A	621	SER	2.4
1	B	626	PRO	2.4
1	B	592	GLY	2.4
1	A	550	ALA	2.4
1	B	635	THR	2.4
1	A	1165	HIS	2.4
1	A	1109	GLY	2.3
1	A	732	LYS	2.3
1	A	626	PRO	2.3
1	B	597	LYS	2.3
1	A	608	GLN	2.3
1	A	592	GLY	2.2
1	A	526	LEU	2.2
1	A	598	ILE	2.2
1	A	523	ASP	2.2
1	A	731	LEU	2.2
1	B	634	MET	2.1
1	A	524	LYS	2.1
1	A	582	LEU	2.1
1	A	1167	ALA	2.1
1	A	415	LYS	2.1
1	A	552	ASP	2.1
1	A	585	LYS	2.0
1	A	521	ASP	2.0
1	B	5	MET	2.0
1	B	1165	HIS	2.0
1	A	528	SER	2.0

Continued on next page...

Continued from previous page...

Mol	Chain	Res	Type	RSRZ
1	A	604	ASP	2.0

6.2 Non-standard residues in protein, DNA, RNA chains ⓘ

There are no non-standard protein/DNA/RNA residues in this entry.

6.3 Carbohydrates ⓘ

There are no carbohydrates in this entry.

6.4 Ligands ⓘ

In the following table, the Atoms column lists the number of modelled atoms in the group and the number defined in the chemical component dictionary. LLDF column lists the quality of electron density of the group with respect to its neighbouring residues in protein, DNA or RNA chains. The B-factors column lists the minimum, median, 95th percentile and maximum values of B factors of atoms in the group. The column labelled 'Q< 0.9' lists the number of atoms with occupancy less than 0.9.

Mol	Type	Chain	Res	Atoms	RSR	LLDF	B-factors(Å ²)	Q<0.9
6	CO2	B	2239	3/3	0.21	7.75	20,20,24,32	0
5	CA	A	2238	1/1	0.14	3.21	39,39,39,39	0
6	CO2	A	2239	3/3	0.14	2.63	22,22,29,33	0
4	MG	A	2237	1/1	0.11	1.63	15,15,15,15	0
3	HTL	B	2236	29/29	0.10	1.21	10,16,25,28	0
5	CA	B	2238	1/1	0.11	1.02	38,38,38,38	0
3	HTL	A	2236	29/29	0.09	0.54	10,17,30,32	0
4	MG	B	2237	1/1	0.07	-0.51	10,10,10,10	0
2	SF4	A	2233	8/8	0.05	-2.11	21,22,23,23	0
2	SF4	B	2234	8/8	0.03	-2.32	10,12,13,14	0
2	SF4	B	2233	8/8	0.05	-2.61	14,16,16,17	0
2	SF4	A	2235	8/8	0.03	-2.65	12,14,15,15	0
2	SF4	A	2234	8/8	0.04	-2.75	17,18,18,18	0
2	SF4	B	2235	8/8	0.04	-2.93	8,11,12,13	0

6.5 Other polymers ⓘ

There are no such residues in this entry.