



Full wwPDB X-ray Structure Validation Report ⓘ

Jun 5, 2014 – 11:33 PM EDT

PDB ID : 4C3P
Title : Structure of dephosphorylated Aurora A (122-403) bound to TPX2 and AMP-PCP
Authors : Zorba, A.; Kutter, S.; Kern, D.
Deposited on : 2013-08-26
Resolution : 2.69 Å(reported)

This is a full wwPDB validation report for a publicly released PDB entry.
We welcome your comments at validation@mail.wwpdb.org
A user guide is available at <http://wwpdb.org/ValidationPDFNotes.html>

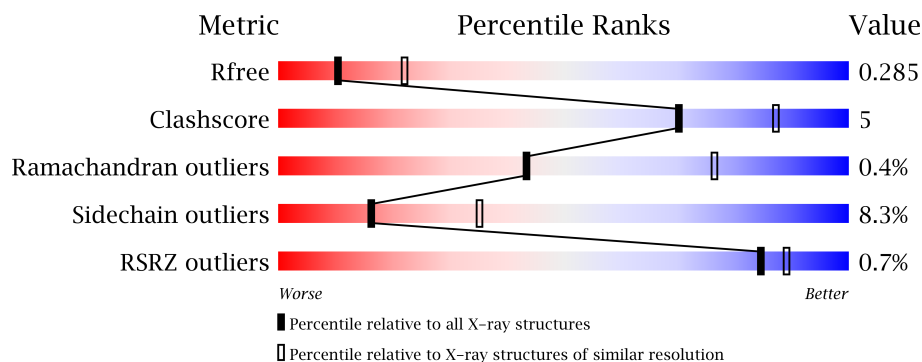
The following versions of software and data (see [references](#)) were used in the production of this report:

MolProbity : 4.02b-467
Mogul : **FAILED**
Xtriage (Phenix) : dev-1439
EDS : stable23161
Percentile statistics : 21963
Refmac : 5.8.0049
CCP4 : 6.3.0 (Settle)
Ideal geometry (proteins) : Engh & Huber (2001)
Ideal geometry (DNA, RNA) : Parkinson et. al. (1996)
Validation Pipeline (wwPDB-VP) : stable23161

1 Overall quality at a glance

The reported resolution of this entry is 2.69 Å.

Percentile scores (ranging between 0-100) for global validation metrics of the entry are shown in the following graphic. The table shows the number of entries on which the scores are based.



Metric	Whole archive (#Entries)	Similar resolution (#Entries, resolution range(Å))
R_{free}	66092	1557 (2.70-2.70)
Clashscore	79885	1939 (2.70-2.70)
Ramachandran outliers	78287	1905 (2.70-2.70)
Sidechain outliers	78261	1905 (2.70-2.70)
RSRZ outliers	66119	1559 (2.70-2.70)

The table below summarises the geometric issues observed across the polymeric chains and their fit to the electron density. The red, orange, yellow and green segments on the lower bar indicate the fraction of residues that contain outliers for ≥ 3 , 2, 1 and 0 types of geometric quality criteria. The upper red bar (where present) indicates the fraction of residues that have poor fit to the electron density.

Mol	Chain	Length	Quality of chain
1	A	282	
1	D	282	
2	B	43	
2	E	43	

2 Entry composition i

There are 5 unique types of molecules in this entry. The entry contains 4662 atoms, of which 0 are hydrogen and 0 are deuterium.

In the tables below, the ZeroOcc column contains the number of atoms modelled with zero occupancy, the AltConf column contains the number of residues with at least one atom in alternate conformation and the Trace column contains the number of residues modelled with at most 2 atoms.

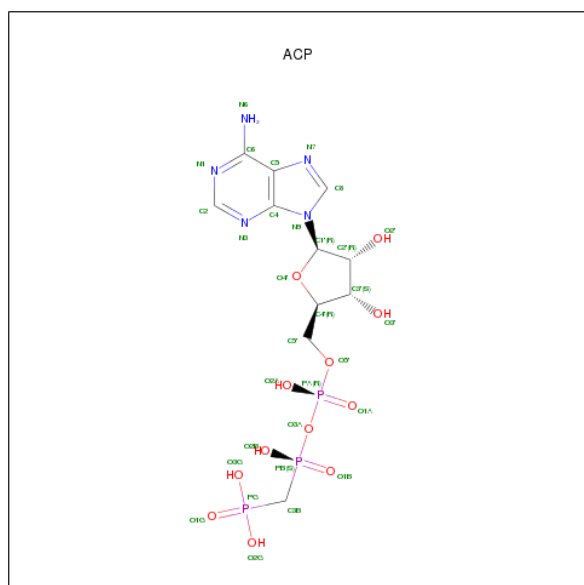
- Molecule 1 is a protein called AURORA KINASE A.

Mol	Chain	Residues	Atoms					ZeroOcc	AltConf	Trace
1	A	264	Total	C	N	O	S	0	0	0
			2168	1392	384	386	6			
1	D	260	Total	C	N	O	S	0	0	0
			2136	1377	375	378	6			

- Molecule 2 is a protein called TARGETING PROTEIN FOR XKLP2.

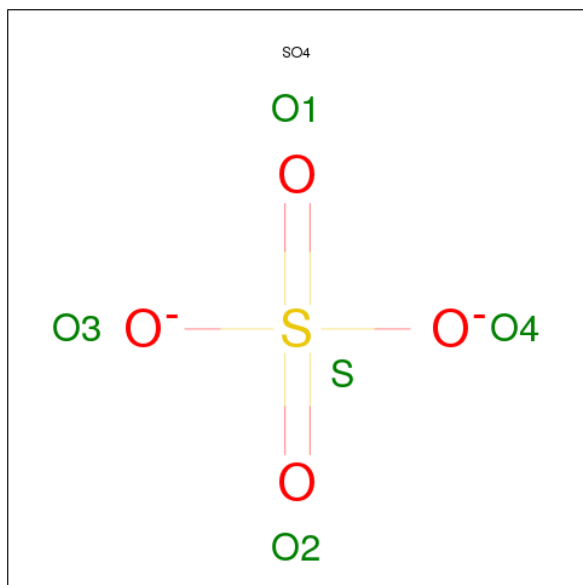
Mol	Chain	Residues	Atoms				ZeroOcc	AltConf	Trace
2	B	17	Total	C	N	O	0	0	0
			134	86	18	30			
2	E	17	Total	C	N	O	0	0	0
			136	88	19	29			

- Molecule 3 is PHOSPHOMETHYLPHOSPHONICACID ADENYLATE ESTER (three-letter code: ACP) (formula: $C_{11}H_{18}N_5O_{12}P_3$).



Mol	Chain	Residues	Atoms					ZeroOcc	AltConf
3	A	1	Total	C	N	O	P	0	0
			31	11	5	12	3		
3	D	1	Total	C	N	O	P	0	0
			31	11	5	12	3		

- Molecule 4 is SULFATE ION (three-letter code: SO4) (formula: O₄S).



Mol	Chain	Residues	Atoms			ZeroOcc	AltConf
4	D	1	Total	O	S	0	0
			5	4	1		

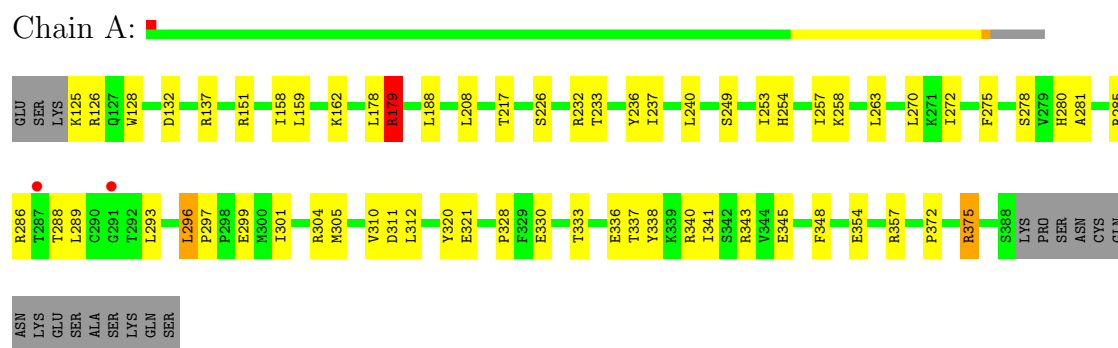
- Molecule 5 is water.

Mol	Chain	Residues	Atoms		ZeroOcc	AltConf
5	A	13	Total	O	0	0
			13	13		
5	B	3	Total	O	0	0
			3	3		
5	D	5	Total	O	0	0
			5	5		

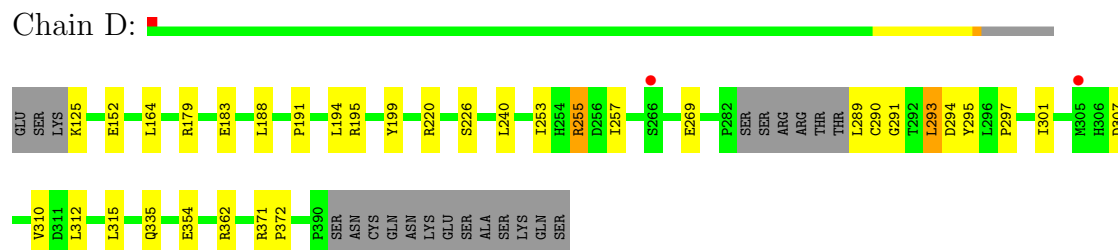
3 Residue-property plots

These plots are drawn for all protein, RNA and DNA chains in the entry. The first graphic for a chain summarises the proportions of errors displayed in the second graphic. The second graphic shows the sequence view annotated by issues in geometry and electron density. Residues are color-coded according to the number of geometric quality criteria for which they contain at least one outlier: green = 0, yellow = 1, orange = 2 and red = 3 or more. A red dot above a residue indicates a poor fit to the electron density ($RSRZ > 2$). Stretches of 2 or more consecutive residues without any outlier are shown as a green connector. Residues present in the sample, but not in the model, are shown in grey.

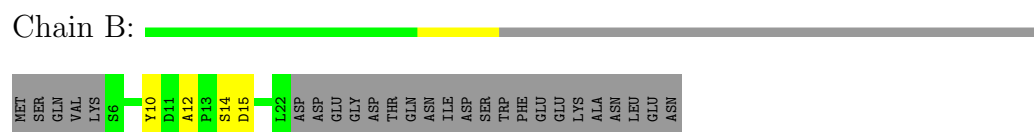
• Molecule 1: AURORA KINASE A



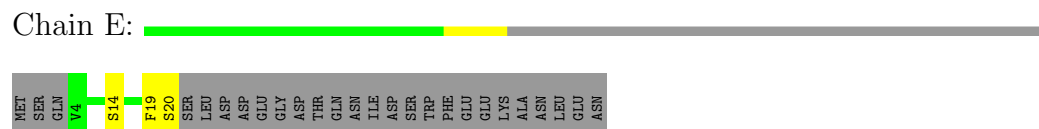
• Molecule 1: AURORA KINASE A



• Molecule 2: TARGETING PROTEIN FOR XKLP2



• Molecule 2: TARGETING PROTEIN FOR XKLP2



4 Data and refinement statistics

Property	Value	Source
Space group	P 21 21 21	Depositor
Cell constants a, b, c, α , β , γ	49.93Å 86.72Å 153.55Å 90.00° 90.00° 90.00°	Depositor
Resolution (Å)	47.48 – 2.69 47.48 – 2.69	Depositor EDS
% Data completeness (in resolution range)	100.0 (47.48-2.69) 100.0 (47.48-2.69)	Depositor EDS
R_{merge}	0.26	Depositor
R_{sym}	(Not available)	Depositor
$\langle I/\sigma(I) \rangle$ ¹	2.32 (at 2.69Å)	Xtriage
Refinement program	REFMAC 5.7.0029	Depositor
R, R_{free}	0.201 , 0.289 0.204 , 0.285	Depositor DCC
R_{free} test set	1035 reflections (5.72%)	DCC
Wilson B-factor (Å ²)	55.1	Xtriage
Anisotropy	0.015	Xtriage
Bulk solvent k_{sol} (e/Å ³), B_{sol} (Å ²)	0.32 , 28.5	EDS
Estimated twinning fraction	No twinning to report.	Xtriage
L-test for twinning	$\langle L \rangle = 0.48$, $\langle L^2 \rangle = 0.31$	Xtriage
Outliers	0 of 19139 reflections	Xtriage
F_o, F_c correlation	0.94	EDS
Total number of atoms	4662	wwPDB-VP
Average B, all atoms (Å ²)	54.0	wwPDB-VP

Xtriage's analysis on translational NCS is as follows: *The largest off-origin peak in the Patterson function is 4.41% of the height of the origin peak. No significant pseudotranslation is detected.*

¹Intensities estimated from amplitudes.

5 Model quality

5.1 Standard geometry

Bond lengths and bond angles in the following residue types are not validated in this section: ACP, SO4

The Z score for a bond length (or angle) is the number of standard deviations the observed value is removed from the expected value. A bond length (or angle) with $|Z| > 5$ is considered an outlier worth inspection. RMSZ is the root-mean-square of all Z scores of the bond lengths (or angles).

Mol	Chain	Bond lengths		Bond angles	
		RMSZ	$\# Z > 5$	RMSZ	$\# Z > 5$
1	A	0.60	0/2222	0.77	2/3003 (0.1%)
1	D	0.56	0/2190	0.74	1/2959 (0.0%)
2	B	0.62	0/138	0.65	0/187
2	E	0.64	0/140	0.66	0/189
All	All	0.58	0/4690	0.75	3/6338 (0.0%)

There are no bond length outliers.

All (3) bond angle outliers are listed below:

Mol	Chain	Res	Type	Atoms	Z	Observed(°)	Ideal(°)
1	A	312	LEU	CA-CB-CG	-5.68	102.22	115.30
1	A	179	ARG	NE-CZ-NH2	-5.33	117.64	120.30
1	D	371	ARG	NE-CZ-NH1	5.17	122.88	120.30

There are no chirality outliers.

There are no planarity outliers.

5.2 Close contacts

In the following table, the Non-H and H(model) columns list the number of non-hydrogen atoms and hydrogen atoms in the chain respectively. The H(added) column lists the number of hydrogens added by MolProbity. The Clashes column lists the number of clashes within the asymmetric unit, and the number in parentheses is this value normalized per 1000 atoms of the molecule in the chain. The Symm-Clashes column gives symmetry related clashes, in the same way as for the Clashes column.

Mol	Chain	Non-H	H(model)	H(added)	Clashes	Symm-Clashes
1	A	2168	0	2178	32	0
1	D	2136	0	2147	15	0

Continued on next page...

Continued from previous page...

Mol	Chain	Non-H	H(model)	H(added)	Clashes	Symm-Clashes
2	B	134	0	113	3	0
2	E	136	0	119	1	0
3	A	31	0	14	1	0
3	D	31	0	14	0	0
4	D	5	0	0	0	0
5	A	13	0	0	0	0
5	B	3	0	0	0	0
5	D	5	0	0	0	0
All	All	4662	0	4585	42	0

Clashscore is defined as the number of clashes calculated for the entry per 1000 atoms (including hydrogens) of the entry. The overall clashscore for this entry is 5.

All (42) close contacts within the same asymmetric unit are listed below.

Atom-1	Atom-2	Distance(Å)	Clash(Å)
1:A:236:TYR:CD1	1:A:270:LEU:HD13	2.35	0.61
1:D:290:CYS:SG	1:D:291:GLY:N	2.75	0.60
1:D:312:LEU:HD22	1:D:372:PRO:O	2.02	0.59
1:A:217:THR:HG22	1:A:263:LEU:CD2	2.32	0.59
1:A:333:THR:HG23	1:A:336:GLU:OE1	2.04	0.58
1:A:151:ARG:NH2	1:A:158:ILE:HD11	2.19	0.58
1:A:151:ARG:CZ	1:A:158:ILE:HD11	2.33	0.57
1:A:337:THR:HG21	1:D:293:LEU:HD13	1.87	0.56
1:A:310:VAL:HG13	1:D:297:PRO:CG	2.39	0.53
1:A:275:PHE:HA	1:A:278:SER:OG	2.09	0.52
1:A:320:TYR:CG	1:A:328:PRO:HG3	2.44	0.52
1:A:178:LEU:HD23	2:B:10:TYR:OH	2.09	0.52
1:A:293:LEU:HA	1:A:296:LEU:HD11	1.92	0.52
1:A:253:ILE:HD11	1:A:281:ALA:HB2	1.93	0.51
1:A:296:LEU:HD13	1:A:301:ILE:HG12	1.92	0.51
1:A:297:PRO:HG3	1:D:310:VAL:HG23	1.94	0.50
1:A:285:ARG:HA	1:A:288:THR:HG22	1.93	0.50
1:A:310:VAL:HG13	1:D:297:PRO:HG2	1.94	0.50
1:A:240:LEU:HD23	1:A:272:ILE:HD11	1.96	0.48
2:E:19:PHE:O	2:E:20:SER:CB	2.62	0.47
1:D:269:GLU:N	1:D:269:GLU:OE1	2.41	0.47
1:A:233:THR:O	1:A:237:ILE:HG12	2.16	0.46
1:A:296:LEU:HD13	1:A:301:ILE:CG1	2.46	0.46
1:A:343:ARG:HB2	1:A:345:GLU:HG3	1.98	0.46
1:A:254:HIS:O	1:A:311:ASP:OD1	2.34	0.45
1:D:253:ILE:HD13	1:D:307:ASP:HB3	1.98	0.45
1:A:338:TYR:CE2	1:D:301:ILE:CG2	3.00	0.45

Continued on next page...

Continued from previous page...

Atom-1	Atom-2	Distance(Å)	Clash(Å)
1:A:341:ILE:HG21	1:D:301:ILE:CD1	2.47	0.44
1:A:289:LEU:HD13	1:A:304:ARG:HD2	2.00	0.44
1:A:341:ILE:HD13	1:D:301:ILE:HD11	2.00	0.44
1:D:240:LEU:HB3	1:D:315:LEU:HD11	1.98	0.44
1:A:375:ARG:CD	1:A:375:ARG:H	2.31	0.44
1:A:179:ARG:HG3	2:B:10:TYR:CD1	2.54	0.43
1:A:348:PHE:CD2	1:A:357:ARG:HG2	2.53	0.43
1:D:293:LEU:O	1:D:294:ASP:C	2.56	0.43
1:D:179:ARG:O	1:D:183:GLU:HG3	2.18	0.43
1:A:162:LYS:HB3	1:A:208:LEU:HB2	2.01	0.42
1:A:321:GLU:OE1	1:D:295:TYR:OH	2.35	0.42
1:A:217:THR:HG22	1:A:263:LEU:HD23	2.01	0.41
1:A:132:ASP:OD1	1:A:132:ASP:N	2.53	0.41
2:B:10:TYR:O	2:B:12:ALA:N	2.52	0.41
3:A:1389:ACP:H8	3:A:1389:ACP:O5'	2.21	0.40

There are no symmetry-related clashes.

5.3 Torsion angles

5.3.1 Protein backbone ⓘ

In the following table, the Percentiles column shows the percent Ramachandran outliers of the chain as a percentile score with respect to all X-ray entries followed by that with respect to entries of similar resolution. The Analysed column shows the number of residues for which the backbone conformation was analysed, and the total number of residues.

Mol	Chain	Analysed	Favoured	Allowed	Outliers	Percentiles	
1	A	262/282 (93%)	244 (93%)	17 (6%)	1 (0%)	43	76
1	D	256/282 (91%)	238 (93%)	17 (7%)	1 (0%)	43	76
2	B	15/43 (35%)	14 (93%)	1 (7%)	0	100	100
2	E	15/43 (35%)	15 (100%)	0	0	100	100
All	All	548/650 (84%)	511 (93%)	35 (6%)	2 (0%)	43	76

All (2) Ramachandran outliers are listed below:

Mol	Chain	Res	Type
1	D	255	ARG
1	A	372	PRO

5.3.2 Protein sidechains ⓘ

In the following table, the Percentiles column shows the percent sidechain outliers of the chain as a percentile score with respect to all X-ray entries followed by that with respect to entries of similar resolution. The Analysed column shows the number of residues for which the sidechain conformation was analysed, and the total number of residues.

Mol	Chain	Analysed	Rotameric	Outliers	Percentiles	
1	A	233/250 (93%)	212 (91%)	21 (9%)	14	31
1	D	229/250 (92%)	212 (93%)	17 (7%)	20	43
2	B	16/40 (40%)	14 (88%)	2 (12%)	7	16
2	E	16/40 (40%)	15 (94%)	1 (6%)	25	53
All	All	494/580 (85%)	453 (92%)	41 (8%)	16	35

All (41) residues with a non-rotameric sidechain are listed below:

Mol	Chain	Res	Type
1	A	125	LYS
1	A	126	ARG
1	A	128	TRP
1	A	137	ARG
1	A	159	LEU
1	A	179	ARG
1	A	188	LEU
1	A	226	SER
1	A	232	ARG
1	A	249	SER
1	A	257	ILE
1	A	258	LYS
1	A	280	HIS
1	A	286	ARG
1	A	296	LEU
1	A	299	GLU
1	A	305	MET
1	A	330	GLU
1	A	340	ARG
1	A	354	GLU
1	A	375	ARG
2	B	14	SER
2	B	15	ASP
1	D	125	LYS
1	D	152	GLU
1	D	164	LEU

Continued on next page...

Continued from previous page...

Mol	Chain	Res	Type
1	D	188	LEU
1	D	191	PRO
1	D	194	LEU
1	D	195	ARG
1	D	199	TYR
1	D	220	ARG
1	D	226	SER
1	D	255	ARG
1	D	257	ILE
1	D	289	LEU
1	D	293	LEU
1	D	335	GLN
1	D	354	GLU
1	D	362	ARG
2	E	14	SER

Some sidechains can be flipped to improve hydrogen bonding and reduce clashes. There are no such sidechains identified.

5.3.3 RNA ⓘ

There are no RNA chains in this entry.

5.4 Non-standard residues in protein, DNA, RNA chains ⓘ

Mogul failed to run properly - this section will therefore be empty.

5.5 Carbohydrates ⓘ

Mogul failed to run properly - this section will therefore be empty.

5.6 Ligand geometry ⓘ

Mogul failed to run properly - this section will therefore be empty.

5.7 Other polymers ⓘ

Mogul failed to run properly - this section will therefore be empty.

5.8 Polymer linkage issues

There are no chain breaks in this entry.

6 Fit of model and data

6.1 Protein, DNA and RNA chains

In the following table, the column labelled ‘#RSRZ> 2’ contains the number (and percentage) of RSRZ outliers, followed by percent RSRZ outliers for the chain as percentile scores relative to all X-ray entries and entries of similar resolution. The OWAB column contains the minimum, median, 95th percentile and maximum values of the occupancy-weighted average B-factor per residue. The column labelled ‘Q< 0.9’ lists the number of (and percentage) of residues with an average occupancy less than 0.9.

Mol	Chain	Analysed	<RSRZ>	#RSRZ>2	OWAB(Å ²)	Q<0.9
1	A	264/282 (93%)	-0.18	2 (0%) 83 87	29, 49, 90, 123	0
1	D	260/282 (92%)	-0.18	2 (0%) 83 87	32, 51, 91, 128	0
2	B	17/43 (39%)	-0.03	0 100 100	33, 51, 92, 92	0
2	E	17/43 (39%)	0.33	0 100 100	39, 53, 93, 99	0
All	All	558/650 (85%)	-0.16	4 (0%) 84 89	29, 50, 91, 128	0

All (4) RSRZ outliers are listed below:

Mol	Chain	Res	Type	RSRZ
1	D	305	MET	3.2
1	A	287	THR	2.7
1	A	291	GLY	2.1
1	D	266	SER	2.0

6.2 Non-standard residues in protein, DNA, RNA chains

There are no non-standard protein/DNA/RNA residues in this entry.

6.3 Carbohydrates

There are no carbohydrates in this entry.

6.4 Ligands

In the following table, the Atoms column lists the number of modelled atoms in the group and the number defined in the chemical component dictionary. LLDF column lists the quality of electron density of the group with respect to its neighbouring residues in protein, DNA or RNA chains. The B-factors column lists the minimum, median, 95th percentile and maximum values of B factors

of atoms in the group. The column labelled 'Q < 0.9' lists the number of atoms with occupancy less than 0.9.

Mol	Type	Chain	Res	Atoms	RSR	LLDF	B-factors(\AA^2)	Q<0.9
4	SO4	D	1392	5/5	0.21	0.52	90,94,106,107	0
3	ACP	A	1389	31/31	0.13	-0.94	35,52,82,97	0
3	ACP	D	1391	31/31	0.13	-1.12	40,54,92,95	0

6.5 Other polymers ⓘ

There are no such residues in this entry.