



# Full wwPDB X-ray Structure Validation Report ⓘ

Mar 1, 2014 – 04:18 AM GMT

PDB ID : 2C49  
Title : CRYSTAL STRUCTURE OF METHANOCALDOCOCUS JANNASCHII  
NUCLEOSIDE KINASE - AN ARCHAEAL MEMBER OF THE RIBOKI-  
NASE FAMILY  
Authors : Arnfors, L.; Hansen, T.; Meining, W.; Schoenheit, P.; Ladenstein, R.  
Deposited on : 2005-10-17  
Resolution : 1.92 Å(reported)

This is a full wwPDB validation report for a publicly released PDB entry.  
We welcome your comments at [validation@mail.wwpdb.org](mailto:validation@mail.wwpdb.org)  
A user guide is available at <http://wwpdb.org/ValidationPDFNotes.html>

---

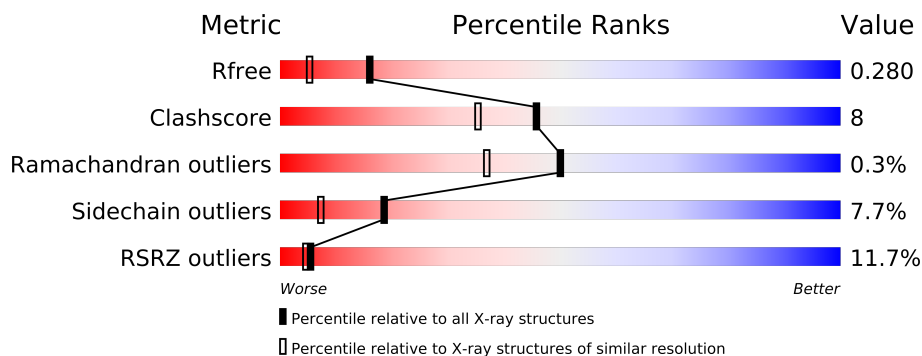
The following versions of software and data (see [references](#)) were used in the production of this report:

MolProbity : 4.02b-467  
Mogul : 1.15 2013  
Xtriage (Phenix) : dev-1323  
EDS : stable22639  
Percentile statistics : 21963  
Refmac : 5.8.0049  
CCP4 : 6.3.0 (Settle)  
Ideal geometry (proteins) : Engh & Huber (2001)  
Ideal geometry (DNA, RNA) : Parkinson et. al. (1996)  
Validation Pipeline (wwPDB-VP) : stable22683

# 1 Overall quality at a glance

The reported resolution of this entry is 1.92 Å.

Percentile scores (ranging between 0-100) for global validation metrics of the entry are shown in the following graphic. The table shows the number of entries on which the scores are based.



Metric	Whole archive (#Entries)	Similar resolution (#Entries, resolution range(Å))
$R_{free}$	66092	4387 (1.94-1.90)
Clashscore	79885	5258 (1.94-1.90)
Ramachandran outliers	78287	5193 (1.94-1.90)
Sidechain outliers	78261	5194 (1.94-1.90)
RSRZ outliers	66119	4389 (1.94-1.90)

The table below summarises the geometric issues observed across the polymeric chains and their fit to the electron density. The red, orange, yellow and green segments on the lower bar indicate the fraction of residues that contain outliers for  $\geq 3$ , 2, 1 and 0 types of geometric quality criteria. The upper red bar (where present) indicates the fraction of residues that have poor fit to the electron density.

Mol	Chain	Length	Quality of chain
1	A	302	
1	B	302	

The following table lists non-polymeric compounds that are outliers for geometric or electron-density-fit criteria:

Mol	Type	Chain	Res	Geometry	Electron density
2	ADN	B	1301	-	X

## 2 Entry composition i

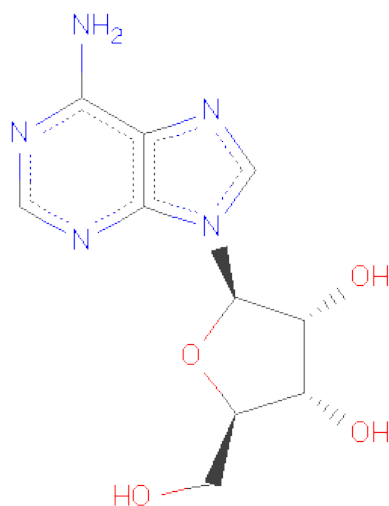
There are 5 unique types of molecules in this entry. The entry contains 5004 atoms, of which 0 are hydrogen and 0 are deuterium.

In the tables below, the ZeroOcc column contains the number of atoms modelled with zero occupancy, the AltConf column contains the number of residues with at least one atom in alternate conformation and the Trace column contains the number of residues modelled with at most 2 atoms.

- Molecule 1 is a protein called SUGAR KINASE MJ0406.

Mol	Chain	Residues	Atoms					ZeroOcc	AltConf	Trace
1	A	299	Total	C	N	O	S	0	0	0
			2371	1521	390	451	9			
1	B	298	Total	C	N	O	S	0	2	0
			2367	1520	387	451	9			

- Molecule 2 is ADENOSINE (three-letter code: ADN) (formula: C<sub>10</sub>H<sub>13</sub>N<sub>5</sub>O<sub>4</sub>).

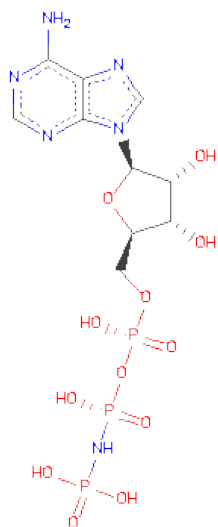


Mol	Chain	Residues	Atoms				ZeroOcc	AltConf
2	A	1	Total	C	N	O	0	0
			19	10	5	4		
2	B	1	Total	C	N	O	0	0
			19	10	5	4		

- Molecule 3 is MAGNESIUM ION (three-letter code: MG) (formula: Mg).

Mol	Chain	Residues	Atoms	ZeroOcc	AltConf
3	B	2	Total Mg 2 2	0	0
3	A	2	Total Mg 2 2	0	0

- Molecule 4 is PHOSPHOAMINOPHOSPHONICACID-ADENYLATE ESTER (three-letter code: ANP) (formula:  $C_{10}H_{17}N_6O_{12}P_3$ ).



Mol	Chain	Residues	Atoms	ZeroOcc	AltConf
4	A	1	Total C N O P 31 10 6 12 3	0	0
4	B	1	Total C N O P 31 10 6 12 3	0	0

- Molecule 5 is water.

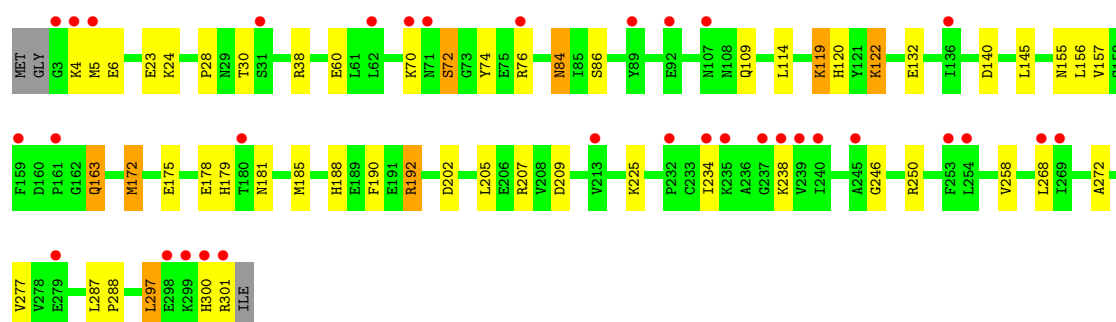
Mol	Chain	Residues	Atoms	ZeroOcc	AltConf
5	A	80	Total O 80 80	0	0
5	B	82	Total O 82 82	0	0

### 3 Residue-property plots

These plots are drawn for all protein, RNA and DNA chains in the entry. The first graphic for a chain summarises the proportions of errors displayed in the second graphic. The second graphic shows the sequence view annotated by issues in geometry and electron density. Residues are color-coded according to the number of geometric quality criteria for which they contain at least one outlier: green = 0, yellow = 1, orange = 2 and red = 3 or more. A red dot above a residue indicates a poor fit to the electron density ( $RSRZ > 2$ ). Stretches of 2 or more consecutive residues without any outlier are shown as a green connector. Residues present in the sample, but not in the model, are shown in grey.

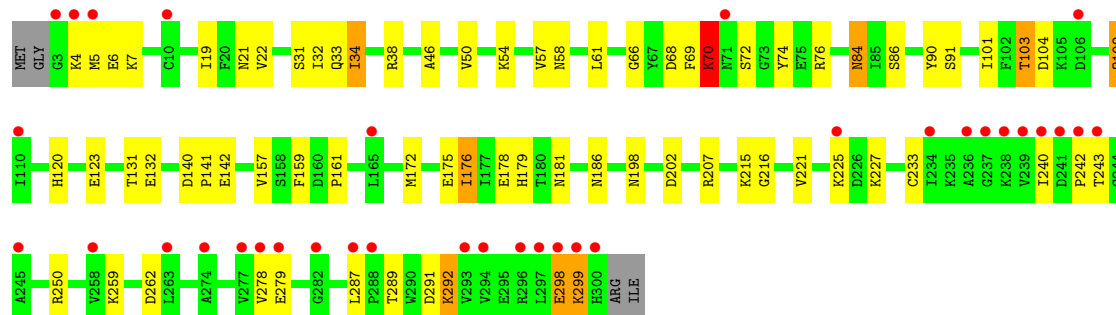
#### • Molecule 1: SUGAR KINASE MJ0406

Chain A: 



#### • Molecule 1: SUGAR KINASE MJ0406

Chain B: 



## 4 Data and refinement statistics

Property	Value	Source
Space group	P 21 21 21	Depositor
Cell constants a, b, c, $\alpha$ , $\beta$ , $\gamma$	64.01Å 83.13Å 146.78Å 90.00° 90.00° 90.00°	Depositor
Resolution (Å)	72.55 – 1.92 48.24 – 1.92	Depositor EDS
% Data completeness (in resolution range)	97.1 (72.55-1.92) 97.1 (48.24-1.92)	Depositor EDS
$R_{merge}$	0.06	Depositor
$R_{sym}$	(Not available)	Depositor
$\langle I/\sigma(I) \rangle$ <sup>1</sup>	1.58 (at 1.92Å)	Xtriage
Refinement program	REFMAC 5.1.24	Depositor
R, $R_{free}$	0.243 , 0.281 0.240 , 0.280	Depositor DCC
$R_{free}$ test set	2955 reflections (5.32%)	DCC
Wilson B-factor (Å <sup>2</sup> )	29.4	Xtriage
Anisotropy	0.272	Xtriage
Bulk solvent $k_{sol}$ (e/Å <sup>3</sup> ), $B_{sol}$ (Å <sup>2</sup> )	0.32 , 34.4	EDS
Estimated twinning fraction	No twinning to report.	Xtriage
L-test for twinning	$\langle  L  \rangle = 0.47$ , $\langle L^2 \rangle = 0.30$	Xtriage
Outliers	1 of 58475 reflections (0.002%)	Xtriage
$F_o, F_c$ correlation	0.91	EDS
Total number of atoms	5004	wwPDB-VP
Average B, all atoms (Å <sup>2</sup> )	21.0	wwPDB-VP

Xtriage's analysis on translational NCS is as follows: *The analyses of the Patterson function reveals a significant off-origin peak that is 51.03 % of the origin peak, indicating pseudo translational symmetry. The chance of finding a peak of this or larger height randomly in a structure without pseudo translational symmetry is equal to 5.9426e-05. The detected translational NCS is most likely also responsible for the elevated intensity ratio.*

<sup>1</sup>Intensities estimated from amplitudes.

## 5 Model quality

### 5.1 Standard geometry

Bond lengths and bond angles in the following residue types are not validated in this section: ADN, MG, ANP

The Z score for a bond length (or angle) is the number of standard deviations the observed value is removed from the expected value. A bond length (or angle) with  $|Z| > 5$  is considered an outlier worth inspection. RMSZ is the root-mean-square of all Z scores of the bond lengths (or angles).

Mol	Chain	Bond lengths		Bond angles	
		RMSZ	$\# Z  > 5$	RMSZ	$\# Z  > 5$
1	A	0.72	0/2425	0.82	3/3277 (0.1%)
1	B	0.70	0/2429	0.81	7/3284 (0.2%)
All	All	0.71	0/4854	0.81	10/6561 (0.2%)

Chiral center outliers are detected by calculating the chiral volume of a chiral center and verifying if the center is modelled as a planar moiety or with the opposite hand. A planarity outlier is detected by checking planarity of atoms in a peptide group, atoms in a mainchain group or atoms of a sidechain that are expected to be planar.

Mol	Chain	#Chirality outliers	#Planarity outliers
1	B	0	2

There are no bond length outliers.

All (10) bond angle outliers are listed below:

Mol	Chain	Res	Type	Atoms	Z	Observed( $^{\circ}$ )	Ideal( $^{\circ}$ )
1	A	209	ASP	CB-CG-OD2	6.54	124.19	118.30
1	B	68	ASP	CB-CG-OD2	6.54	124.19	118.30
1	A	202	ASP	CB-CG-OD2	6.12	123.80	118.30
1	B	140	ASP	CB-CG-OD2	6.08	123.78	118.30
1	B	291	ASP	CB-CG-OD2	5.93	123.63	118.30
1	A	140	ASP	CB-CG-OD2	5.78	123.50	118.30
1	B	104	ASP	CB-CG-OD1	5.61	123.35	118.30
1	B	262	ASP	CB-CG-OD1	5.36	123.12	118.30
1	B	202	ASP	CB-CG-OD2	5.06	122.86	118.30
1	B	250	ARG	NE-CZ-NH1	-5.05	117.77	120.30

There are no chirality outliers.

All (2) planarity outliers are listed below:

Mol	Chain	Res	Type	Group
1	B	69	PHE	Peptide
1	B	70	LYS	Peptide

## 5.2 Close contacts ⓘ

In the following table, the Non-H and H(model) columns list the number of non-hydrogen atoms and hydrogen atoms in the chain respectively. The H(added) column lists the number of hydrogens added by MolProbity. The Clashes column lists the number of clashes within the asymmetric unit, and the number in parentheses is this value normalized per 1000 atoms of the molecule in the chain. The Symm-Clashes column gives symmetry related clashes, in the same way as for the Clashes column.

Mol	Chain	Non-H	H(model)	H(added)	Clashes	Symm-Clashes
1	A	2371	0	2342	35	0
1	B	2367	0	2336	44	0
2	A	19	0	13	3	0
2	B	19	0	13	1	0
3	A	2	0	0	0	0
3	B	2	0	0	0	0
4	A	31	0	13	1	0
4	B	31	0	13	4	0
5	A	80	0	0	2	0
5	B	82	0	0	1	0
All	All	5004	0	4730	79	0

Clashscore is defined as the number of clashes calculated for the entry per 1000 atoms (including hydrogens) of the entry. The overall clashscore for this entry is 8.

All (79) close contacts within the same asymmetric unit are listed below.

Atom-1	Atom-2	Distance(Å)	Clash(Å)
1:A:192:ARG:HG3	1:A:192:ARG:HH11	1.03	1.10
1:B:22:VAL:HG21	1:B:32:ILE:HD12	1.32	1.09
1:B:22:VAL:HG21	1:B:32:ILE:CD1	1.99	0.92
1:B:5:MET:HG3	1:B:7:LYS:HB3	1.55	0.86
2:A:1301:ADN:HN62	1:B:33:GLN:HE21	1.20	0.85
1:B:157:VAL:H	1:B:181:ASN:HD22	1.23	0.85
1:B:5:MET:SD	1:B:7:LYS:HD3	2.17	0.83
1:A:192:ARG:HG3	1:A:192:ARG:NH1	1.83	0.82
1:A:192:ARG:HH11	1:A:192:ARG:CG	1.88	0.82
1:A:163:GLN:HE21	1:A:163:GLN:H	1.23	0.81
1:A:157:VAL:H	1:A:181:ASN:HD22	1.31	0.79
1:A:300:HIS:CD2	1:A:301:ARG:H	2.02	0.76

*Continued on next page...*



*Continued from previous page...*

Atom-1	Atom-2	Distance(Å)	Clash(Å)
1:A:188:HIS:O	1:A:192:ARG:HG2	1.86	0.74
1:B:5:MET:O	1:B:132:GLU:HG3	1.87	0.74
1:B:233:CYS:SG	5:B:2064:HOH:O	2.46	0.73
1:B:5:MET:HG3	1:B:7:LYS:CB	2.18	0.72
1:B:22:VAL:CG2	1:B:32:ILE:HD12	2.17	0.69
1:A:178:GLU:HG2	1:A:207:ARG:HG2	1.76	0.67
1:A:145:LEU:HD11	1:A:175:GLU:HG2	1.77	0.66
1:A:163:GLN:H	1:A:163:GLN:NE2	1.97	0.61
1:A:300:HIS:CG	1:A:301:ARG:H	2.18	0.60
1:A:84:ASN:HD22	1:A:84:ASN:C	2.05	0.60
1:B:103:THR:HB	1:B:109:GLN:HG3	1.84	0.59
1:B:19:ILE:HD13	1:B:101:ILE:HB	1.86	0.58
1:B:7:LYS:HG2	1:B:131:THR:HG22	1.86	0.57
1:B:70:LYS:HE3	1:B:90:TYR:HD2	1.69	0.57
1:A:119:LYS:HE3	1:A:120:HIS:CE1	2.40	0.57
1:B:240:ILE:HD12	1:B:279:GLU:O	2.05	0.56
1:B:159:PHE:CD2	1:B:176:ILE:HD12	2.40	0.55
1:B:298:GLU:OE2	1:B:299:LYS:HD3	2.06	0.55
1:B:216:GLY:O	4:B:1304:ANP:H2'	2.06	0.55
1:B:175:GLU:O	1:B:179:HIS:HD2	1.90	0.55
1:A:277:VAL:CG2	1:A:287:LEU:HD23	2.37	0.55
1:A:5:MET:O	1:A:132:GLU:HG3	2.08	0.54
1:B:215:LYS:HE3	1:B:221[B]:VAL:HG23	1.90	0.54
1:B:178:GLU:HG2	1:B:207:ARG:HG2	1.89	0.54
1:B:242:PRO:HA	1:B:278:VAL:HG12	1.91	0.52
1:B:70:LYS:HG2	1:B:90:TYR:CD2	2.44	0.52
1:B:243:THR:HA	4:B:1304:ANP:O1G	2.11	0.51
1:B:243:THR:HG23	4:B:1304:ANP:O1G	2.11	0.51
1:A:192:ARG:NH1	1:A:192:ARG:CG	2.53	0.50
1:A:84:ASN:HD22	1:A:86:SER:H	1.60	0.50
1:A:277:VAL:HG21	1:A:287:LEU:HD23	1.93	0.49
1:B:7:LYS:HA	1:B:58:ASN:O	2.12	0.48
1:B:289:THR:OG1	1:B:292:LYS:HD2	2.12	0.48
1:A:114:LEU:HD12	1:B:34:ILE:HG12	1.95	0.48
1:A:84:ASN:ND2	1:A:86:SER:H	2.12	0.47
1:B:21:ASN:HD21	1:B:38:ARG:HH12	1.62	0.47
1:B:216:GLY:HA2	4:B:1304:ANP:H8	1.97	0.47
1:A:60:GLU:HB3	1:A:84:ASN:HB3	1.97	0.46
1:B:84:ASN:ND2	1:B:86:SER:H	2.14	0.46
1:B:66:GLY:O	1:B:70:LYS:HG3	2.16	0.45
1:A:175:GLU:O	1:A:179:HIS:HD2	1.99	0.45
1:B:91:SER:HB2	1:B:120:HIS:CD2	2.51	0.45

*Continued on next page...*

Continued from previous page...

Atom-1	Atom-2	Distance(Å)	Clash(Å)
1:B:46:ALA:HA	1:B:61:LEU:HD21	1.99	0.45
1:A:119:LYS:O	1:A:122:LYS:HG2	2.17	0.45
1:A:234:ILE:HD13	1:A:272:ALA:HB2	1.99	0.44
1:A:185:MET:CE	1:A:190:PHE:HD1	2.29	0.44
2:B:1301:ADN:H2'	2:B:1301:ADN:H8	1.80	0.43
1:B:57:VAL:HG23	1:B:259:LYS:HE2	1.99	0.43
1:A:246:GLY:O	1:A:250:ARG:HD3	2.18	0.43
1:A:268:LEU:HB3	1:A:297:LEU:HD21	2.01	0.43
1:A:109:GLN:HE21	4:A:1304:ANP:PG	2.41	0.43
1:A:287:LEU:HA	1:A:288:PRO:HD3	1.90	0.43
1:A:72:SER:CB	5:A:2020:HOH:O	2.67	0.42
1:B:70:LYS:HE3	1:B:90:TYR:CD2	2.51	0.42
1:B:141:PRO:C	1:B:172:MET:HE1	2.39	0.42
2:A:1301:ADN:HN61	1:B:31:SER:HB3	1.85	0.42
1:B:70:LYS:HG2	1:B:90:TYR:CE2	2.55	0.42
1:B:159:PHE:CZ	1:B:161:PRO:HB3	2.55	0.41
1:A:172:MET:HE3	1:A:172:MET:HB3	1.96	0.41
1:B:46:ALA:O	1:B:50:VAL:HG23	2.20	0.41
1:A:300:HIS:CG	1:A:301:ARG:N	2.86	0.41
1:A:207:ARG:HD2	1:A:207:ARG:HH11	1.75	0.41
1:B:54:LYS:HE3	1:B:287:LEU:O	2.21	0.41
2:A:1301:ADN:HN62	1:B:33:GLN:NE2	2.01	0.40
1:B:70:LYS:HG2	1:B:90:TYR:HD2	1.87	0.40
1:A:6:GLU:HG2	1:A:258:VAL:HG13	2.04	0.40
1:A:28:PRO:HD3	5:A:2003:HOH:O	2.21	0.40

There are no symmetry-related clashes.

## 5.3 Torsion angles

### 5.3.1 Protein backbone ⓘ

In the following table, the Percentiles column shows the percent Ramachandran outliers of the chain as a percentile score with respect to all X-ray entries followed by that with respect to entries of similar resolution. The Analysed column shows the number of residues for which the backbone conformation was analysed, and the total number of residues.

Mol	Chain	Analysed	Favoured	Allowed	Outliers	Percentiles	
1	A	297/302 (98%)	283 (95%)	13 (4%)	1 (0%)	50	37
1	B	298/302 (99%)	290 (97%)	7 (2%)	1 (0%)	50	37
All	All	595/604 (98%)	573 (96%)	20 (3%)	2 (0%)	50	37

All (2) Ramachandran outliers are listed below:

Mol	Chain	Res	Type
1	A	238	LYS
1	B	6	GLU

### 5.3.2 Protein sidechains ⓘ

In the following table, the Percentiles column shows the percent sidechain outliers of the chain as a percentile score with respect to all X-ray entries followed by that with respect to entries of similar resolution. The Analysed column shows the number of residues for which the sidechain conformation was analysed, and the total number of residues.

Mol	Chain	Analysed	Rotameric	Outliers	Percentiles	
1	A	255/257 (99%)	235 (92%)	20 (8%)	18	7
1	B	256/257 (100%)	236 (92%)	20 (8%)	18	7
All	All	511/514 (99%)	471 (92%)	40 (8%)	18	7

All (40) residues with a non-rotameric sidechain are listed below:

Mol	Chain	Res	Type
1	A	4	LYS
1	A	23	GLU
1	A	24	LYS
1	A	30	THR
1	A	38	ARG
1	A	70	LYS
1	A	72	SER
1	A	74	TYR
1	A	76	ARG
1	A	84	ASN
1	A	119	LYS
1	A	122	LYS
1	A	155	ASN
1	A	156	LEU
1	A	163	GLN
1	A	172	MET
1	A	192	ARG
1	A	205	LEU
1	A	225	LYS
1	A	297	LEU
1	B	4	LYS
1	B	34	ILE

*Continued on next page...*

*Continued from previous page...*

Mol	Chain	Res	Type
1	B	70	LYS
1	B	72	SER
1	B	74	TYR
1	B	76	ARG
1	B	84	ASN
1	B	103	THR
1	B	109	GLN
1	B	123	GLU
1	B	142	GLU
1	B	176	ILE
1	B	186[A]	ASN
1	B	186[B]	ASN
1	B	198	ASN
1	B	225	LYS
1	B	227	LYS
1	B	292	LYS
1	B	298	GLU
1	B	299	LYS

Some sidechains can be flipped to improve hydrogen bonding and reduce clashes. All (19) such sidechains are listed below:

Mol	Chain	Res	Type
1	A	21	ASN
1	A	84	ASN
1	A	109	GLN
1	A	128	ASN
1	A	144	ASN
1	A	163	GLN
1	A	179	HIS
1	A	181	ASN
1	A	286	ASN
1	A	300	HIS
1	B	21	ASN
1	B	33	GLN
1	B	84	ASN
1	B	144	ASN
1	B	179	HIS
1	B	181	ASN
1	B	198	ASN
1	B	286	ASN
1	B	300	HIS

### 5.3.3 RNA ⓘ

There are no RNA chains in this entry.

## 5.4 Non-standard residues in protein, DNA, RNA chains ⓘ

There are no non-standard protein/DNA/RNA residues in this entry.

## 5.5 Carbohydrates ⓘ

There are no carbohydrates in this entry.

## 5.6 Ligand geometry ⓘ

Of 8 ligands modelled in this entry, 4 are monoatomic - leaving 4 for Mogul analysis.

In the following table, the Counts columns list the number of bonds (or angles) for which Mogul statistics could be retrieved, the number of bonds (or angles) that are observed in the model and the number of bonds (or angles) that are defined in the chemical component dictionary. The Link column lists molecule types, if any, to which the group is linked. The Z score for a bond length (or angle) is the number of standard deviations the observed value is removed from the expected value. A bond length (or angle) with  $|Z| > 2$  is considered an outlier worth inspection. RMSZ is the root-mean-square of all Z scores of the bond lengths (or angles).

Mol	Type	Chain	Res	Link	Bond lengths			Bond angles		
					Counts	RMSZ	$\# Z  > 2$	Counts	RMSZ	$\# Z  > 2$
2	ADN	A	1301	-	21,21,21	1.72	2 (9%)	31,31,31	2.43	9 (29%)
4	ANP	A	1304	-	33,33,33	4.52	10 (30%)	51,52,52	2.49	16 (31%)
2	ADN	B	1301	-	21,21,21	1.75	3 (14%)	31,31,31	2.46	11 (35%)
4	ANP	B	1304	-	33,33,33	4.37	8 (24%)	51,52,52	2.19	13 (25%)

In the following table, the Chirals column lists the number of chiral outliers, the number of chiral centers analysed, the number of these observed in the model and the number defined in the chemical component dictionary. Similar counts are reported in the Torsion and Rings columns. '-' means no outliers of that kind were identified.

Mol	Type	Chain	Res	Link	Chirals	Torsions	Rings
2	ADN	A	1301	-	-	0/6/22/22	0/1/3/3
4	ANP	A	1304	-	-	0/18/38/38	0/1/3/3
2	ADN	B	1301	-	-	0/6/22/22	0/1/3/3
4	ANP	B	1304	-	-	0/18/38/38	0/1/3/3

All (23) bond length outliers are listed below:

Mol	Chain	Res	Type	Atoms	Z	Observed(Å)	Ideal(Å)
4	A	1304	ANP	PG-N3B	13.35	1.75	1.64
4	B	1304	ANP	PB-N3B	12.87	1.75	1.64
4	B	1304	ANP	PG-N3B	12.22	1.75	1.64
4	A	1304	ANP	PB-N3B	12.09	1.74	1.64
4	B	1304	ANP	PB-O1B	11.09	1.59	1.46
4	A	1304	ANP	PG-O1G	11.06	1.59	1.46
4	A	1304	ANP	PB-O1B	10.86	1.59	1.46
4	B	1304	ANP	PG-O1G	10.79	1.59	1.46
4	A	1304	ANP	C4-N3	6.98	1.46	1.35
2	B	1301	ADN	C4-N3	6.05	1.44	1.35
4	B	1304	ANP	C4-N3	5.89	1.44	1.35
2	A	1301	ADN	C4-N3	5.47	1.44	1.35
2	A	1301	ADN	C4-N9	-3.97	1.32	1.37
4	A	1304	ANP	PB-O3A	3.65	1.64	1.59
4	A	1304	ANP	C4-N9	-3.42	1.32	1.37
2	B	1301	ADN	C4-N9	-2.96	1.33	1.37
4	B	1304	ANP	C4-N9	-2.78	1.33	1.37
4	B	1304	ANP	C5-C4	2.76	1.46	1.40
2	B	1301	ADN	C5-C4	2.43	1.46	1.40
4	A	1304	ANP	C5-C4	2.38	1.45	1.40
4	A	1304	ANP	PA-O1A	2.26	1.60	1.51
4	B	1304	ANP	PA-O1A	2.13	1.59	1.51
4	A	1304	ANP	C2-N3	2.04	1.36	1.32

All (49) bond angle outliers are listed below:

Mol	Chain	Res	Type	Atoms	Z	Observed(°)	Ideal(°)
4	A	1304	ANP	PB-N3B-PG	-9.59	113.94	130.07
2	A	1301	ADN	N3-C2-N1	-9.05	121.14	128.71
4	A	1304	ANP	N3-C2-N1	-8.04	121.99	128.71
4	B	1304	ANP	PB-N3B-PG	-7.10	118.13	130.07
2	B	1301	ADN	N3-C2-N1	-7.01	122.85	128.71
4	B	1304	ANP	N3-C2-N1	-6.83	123.00	128.71
2	B	1301	ADN	O4'-C1'-N9	6.64	114.62	108.44
4	A	1304	ANP	C2'-C1'-N9	-4.41	101.95	113.27
4	B	1304	ANP	PA-O3A-PB	-4.30	117.12	131.81
2	B	1301	ADN	C3'-C2'-C1'	4.23	107.53	100.91
4	B	1304	ANP	C4-C5-N7	-4.17	105.95	109.52
2	B	1301	ADN	C4-C5-N7	-4.17	105.95	109.52
4	B	1304	ANP	C8-N9-C4	-4.16	103.73	106.90
2	A	1301	ADN	C4-C5-N7	-3.94	106.15	109.52
4	A	1304	ANP	PA-O3A-PB	-3.91	118.43	131.81

*Continued on next page...*

*Continued from previous page...*

Mol	Chain	Res	Type	Atoms	Z	Observed(°)	Ideal(°)
4	B	1304	ANP	C2'-C1'-N9	-3.55	104.15	113.27
4	A	1304	ANP	C3'-C2'-C1'	3.44	106.28	100.91
2	B	1301	ADN	C8-N9-C4	-3.35	104.34	106.90
4	B	1304	ANP	C3'-C2'-C1'	3.24	105.98	100.91
4	A	1304	ANP	O2'-C2'-C1'	-3.10	101.86	111.23
2	A	1301	ADN	C5'-C4'-C3'	3.02	122.45	115.06
4	A	1304	ANP	C2-N1-C6	2.95	124.09	118.77
2	B	1301	ADN	C4'-O4'-C1'	2.94	112.94	109.75
2	A	1301	ADN	O4'-C1'-N9	2.90	111.14	108.44
4	B	1304	ANP	C2-N1-C6	2.81	123.85	118.77
4	A	1304	ANP	C8-N9-C4	-2.74	104.81	106.90
4	A	1304	ANP	O3A-PB-N3B	2.56	113.68	106.59
2	A	1301	ADN	C6-C5-N7	2.49	140.86	131.34
4	A	1304	ANP	O3G-PG-O1G	-2.46	107.28	113.60
2	B	1301	ADN	C2-N1-C6	2.36	123.03	118.77
2	A	1301	ADN	C6-C5-C4	-2.33	112.97	117.25
4	A	1304	ANP	O4'-C1'-N9	2.32	110.59	108.44
2	B	1301	ADN	C5-C4-N3	-2.32	120.66	125.70
4	A	1304	ANP	O2B-PB-N3B	-2.30	100.36	106.61
2	A	1301	ADN	C2-N1-C6	2.29	122.91	118.77
4	A	1304	ANP	O3'-C3'-C4'	2.28	117.81	111.08
4	B	1304	ANP	C5-C4-N3	-2.24	120.82	125.70
2	A	1301	ADN	O4'-C1'-C2'	2.22	110.18	106.77
4	B	1304	ANP	C5-C4-N9	2.21	110.36	107.16
4	A	1304	ANP	O2B-PB-O3A	2.21	115.62	105.14
4	B	1304	ANP	C4'-O4'-C1'	2.13	112.06	109.75
2	B	1301	ADN	C5-C4-N9	2.11	110.21	107.16
4	B	1304	ANP	O1G-PG-N3B	-2.10	108.65	111.83
2	A	1301	ADN	C3'-C2'-C1'	2.07	104.15	100.91
2	B	1301	ADN	N3-C4-N9	2.05	129.13	125.43
4	B	1304	ANP	O4'-C1'-N9	2.04	110.33	108.44
2	B	1301	ADN	C6-C5-N7	2.02	139.07	131.34
4	A	1304	ANP	C4-C5-N7	-2.02	107.80	109.52
4	A	1304	ANP	N6-C6-N1	2.01	123.31	119.36

There are no chirality outliers.

There are no torsion outliers.

There are no ring outliers.

## 5.7 Other polymers ⓘ

There are no such residues in this entry.

## 5.8 Polymer linkage issues

There are no chain breaks in this entry.



## 6 Fit of model and data ⓘ

### 6.1 Protein, DNA and RNA chains ⓘ

In the following table, the column labelled ‘#RSRZ > 2’ contains the number (and percentage) of RSRZ outliers, followed by percent RSRZ outliers for the chain as percentile scores relative to all X-ray entries and entries of similar resolution. The OWAB column contains the minimum, median, 95<sup>th</sup> percentile and maximum values of the occupancy-weighted average B-factor per residue. The column labelled ‘Q < 0.9’ lists the number of (and percentage) of residues with an average occupancy less than 0.9.

Mol	Chain	Analysed	<RSRZ>	#RSRZ>2	OWAB(Å <sup>2</sup> )	Q<0.9
1	A	299/302 (99%)	0.92	33 (11%) 6 5	14, 19, 28, 42	24 (8%)
1	B	298/302 (98%)	0.98	35 (11%) 5 4	13, 19, 28, 43	32 (10%)
All	All	597/604 (98%)	0.95	68 (11%) 5 5	13, 19, 28, 43	56 (9%)

All (68) RSRZ outliers are listed below:

Mol	Chain	Res	Type	RSRZ
1	A	71	ASN	7.3
1	B	278	VAL	7.2
1	B	239	VAL	7.1
1	B	243	THR	6.9
1	B	238	LYS	6.5
1	A	239	VAL	6.5
1	B	240	ILE	6.4
1	B	294	VAL	4.9
1	B	242	PRO	4.9
1	A	301	ARG	4.8
1	A	237	GLY	4.6
1	B	5	MET	4.6
1	A	4	LYS	4.5
1	A	3	GLY	4.5
1	B	277	VAL	4.4
1	B	3	GLY	4.3
1	A	240	ILE	4.2
1	B	297	LEU	4.2
1	A	300	HIS	3.9
1	B	4	LYS	3.9
1	B	234	ILE	3.9
1	B	300	HIS	3.8
1	B	236	ALA	3.6
1	B	71	ASN	3.5

*Continued on next page...*

*Continued from previous page...*

Mol	Chain	Res	Type	RSRZ
1	A	238	LYS	3.4
1	A	268	LEU	3.3
1	A	234	ILE	3.2
1	A	232	PRO	3.2
1	A	92	GLU	3.1
1	A	76	ARG	3.1
1	B	106	ASP	3.0
1	A	5	MET	3.0
1	A	254	LEU	3.0
1	B	293	VAL	2.9
1	B	279	GLU	2.8
1	B	237	GLY	2.8
1	B	165	LEU	2.7
1	B	299	LYS	2.6
1	A	235	LYS	2.6
1	B	241	ASP	2.5
1	B	245	ALA	2.5
1	B	282	GLY	2.5
1	B	263	LEU	2.4
1	B	110	ILE	2.4
1	A	31	SER	2.4
1	B	225	LYS	2.4
1	A	253	PHE	2.4
1	B	274	ALA	2.4
1	B	298	GLU	2.4
1	B	258	VAL	2.3
1	A	298	GLU	2.3
1	A	70	LYS	2.3
1	B	296	ARG	2.3
1	A	279	GLU	2.3
1	A	213	VAL	2.2
1	A	107	ASN	2.1
1	A	299	LYS	2.1
1	A	89	TYR	2.1
1	A	159	PHE	2.1
1	A	62	LEU	2.1
1	A	136	ILE	2.1
1	A	161	PRO	2.1
1	B	288	PRO	2.1
1	A	269	ILE	2.1
1	A	245	ALA	2.0
1	B	287	LEU	2.0

*Continued on next page...*

*Continued from previous page...*

Mol	Chain	Res	Type	RSRZ
1	A	180	THR	2.0
1	B	10	CYS	2.0

## 6.2 Non-standard residues in protein, DNA, RNA chains

There are no non-standard protein/DNA/RNA residues in this entry.

## 6.3 Carbohydrates

There are no carbohydrates in this entry.

## 6.4 Ligands

In the following table, the Atoms column lists the number of modelled atoms in the group and the number defined in the chemical component dictionary. LLDF column lists the quality of electron density of the group with respect to its neighbouring residues in protein, DNA or RNA chains. The B-factors column lists the minimum, median, 95<sup>th</sup> percentile and maximum values of B factors of atoms in the group. The column labelled 'Q< 0.9' lists the number of atoms with occupancy less than 0.9.

Mol	Type	Chain	Res	Atoms	RSR	LLDF	B-factors(Å <sup>2</sup> )	Q<0.9
2	ADN	B	1301	19/19	0.50	14.80	43,46,49,51	11
4	ANP	A	1304	31/31	0.28	1.24	35,41,45,47	7
3	MG	B	1303	1/1	0.15	1.16	42,42,42,42	0
2	ADN	A	1301	19/19	0.14	0.33	20,24,27,28	0
4	ANP	B	1304	31/31	0.25	0.27	54,59,68,69	7
3	MG	B	1302	1/1	0.11	-1.31	54,54,54,54	0
3	MG	A	1302	1/1	0.11	-1.51	30,30,30,30	0
3	MG	A	1303	1/1	0.04	-3.01	43,43,43,43	0

## 6.5 Other polymers

There are no such residues in this entry.