



# wwPDB X-ray Structure Validation Summary Report

Mar 1, 2014 – 02:54 AM GMT

PDB ID : 2C4F  
Title : CRYSTAL STRUCTURE OF FACTOR VII:STF COMPLEXED WITH PD0297121  
Authors : Kohrt, J.T.; Zhang, E.  
Deposited on : 2005-10-18  
Resolution : 1.72 Å(reported)

This is a wwPDB validation summary report for a publicly released PDB entry.  
We welcome your comments at [validation@mail.wwpdb.org](mailto:validation@mail.wwpdb.org)  
A user guide is available at <http://wwpdb.org/ValidationPDFNotes.html>

---

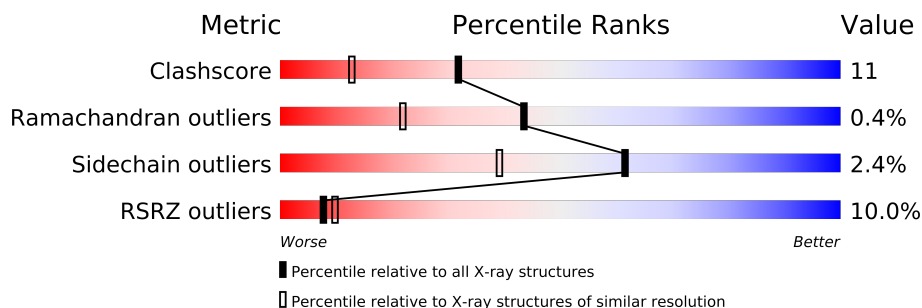
The following versions of software and data (see [references](#)) were used in the production of this report:

MolProbity : 4.02b-467  
Mogul : 1.15 2013  
Xtriage (Phenix) : dev-1323  
EDS : stable22639  
Percentile statistics : 21963  
Refmac : 5.8.0049  
CCP4 : 6.3.0 (Settle)  
Ideal geometry (proteins) : Engh & Huber (2001)  
Ideal geometry (DNA, RNA) : Parkinson et. al. (1996)  
Validation Pipeline (wwPDB-VP) : stable22683

# 1 Overall quality at a glance

The reported resolution of this entry is 1.72 Å.

Percentile scores (ranging between 0-100) for global validation metrics of the entry are shown in the following graphic. The table shows the number of entries on which the scores are based.



Metric	Whole archive (#Entries)	Similar resolution (#Entries, resolution range(Å))
Clashscore	79885	3506 (1.74-1.70)
Ramachandran outliers	78287	3449 (1.74-1.70)
Sidechain outliers	78261	3449 (1.74-1.70)
RSRZ outliers	66119	2979 (1.74-1.70)

The table below summarises the geometric issues observed across the polymeric chains and their fit to the electron density. The red, orange, yellow and green segments on the lower bar indicate the fraction of residues that contain outliers for  $\geq 3$ , 2, 1 and 0 types of geometric quality criteria. The upper red bar (where present) indicates the fraction of residues that have poor fit to the electron density.

Mol	Chain	Length	Quality of chain
1	H	254	
2	L	142	
3	T	75	
4	U	116	

## 2 Entry composition

There are 10 unique types of molecules in this entry. The entry contains 5058 atoms, of which 0 are hydrogen and 0 are deuterium.

In the tables below, the ZeroOcc column contains the number of atoms modelled with zero occupancy, the AltConf column contains the number of residues with at least one atom in alternate conformation and the Trace column contains the number of residues modelled with at most 2 atoms.

- Molecule 1 is a protein called COAGULATION FACTOR VII PRECURSOR.

Mol	Chain	Residues	Atoms					ZeroOcc	AltConf	Trace
1	H	254	Total	C	N	O	S	0	0	0
			1974	1253	351	357	13			

- Molecule 2 is a protein called COAGULATION FACTOR VII PRECURSOR.

Mol	Chain	Residues	Atoms					ZeroOcc	AltConf	Trace
2	L	139	Total	C	N	O	S	0	0	0
			1117	673	185	244	15			

- Molecule 3 is a protein called TISSUE FACTOR PRECURSOR.

Mol	Chain	Residues	Atoms					ZeroOcc	AltConf	Trace
3	T	75	Total	C	N	O	S	0	0	0
			615	397	95	121	2			

- Molecule 4 is a protein called TISSUE FACTOR PRECURSOR.

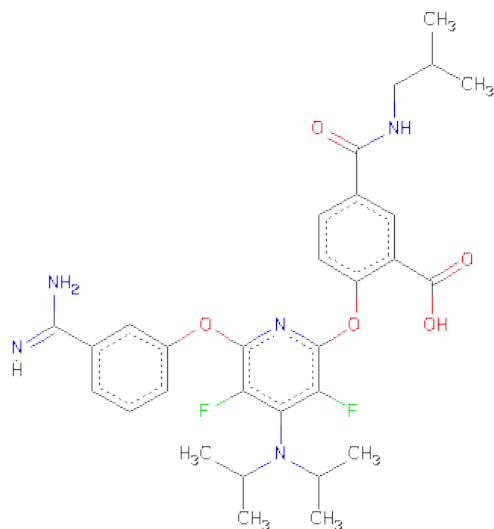
Mol	Chain	Residues	Atoms					ZeroOcc	AltConf	Trace
4	U	116	Total	C	N	O	S	0	0	0
			940	593	155	189	3			

- Molecule 5 is CALCIUM ION (three-letter code: CA) (formula: Ca).

Mol	Chain	Residues	Atoms		ZeroOcc	AltConf
5	H	1	Total	Ca	0	0
			1	1		
5	A	3	Total	Ca	0	0
			3	3		
5	L	1	Total	Ca	0	0
			1	1		

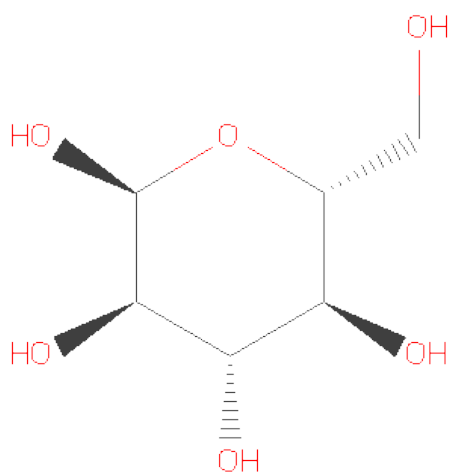
- Molecule 6 is 2-{[6-{3-[AMINO(IMINO)METHYL]PHENOXY}-4-(DIISOPROPYLAMIN

O)-3,5-DIFLUOROPYRIDIN-2-YL]OXY}-5-[(ISOBUTYLAMINO)CARBONYL]BENZOIC ACID (three-letter code: GIL) (formula:  $C_{30}H_{35}F_2N_5O_5$ ).



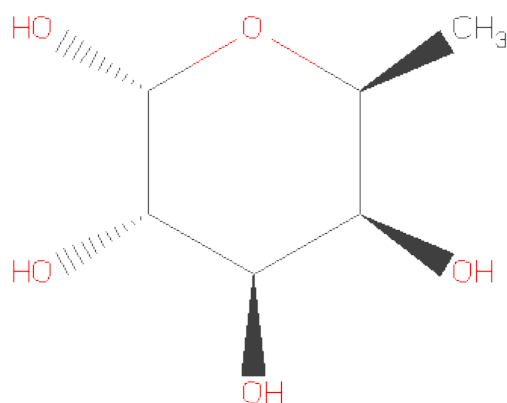
Mol	Chain	Residues	Atoms					ZeroOcc	AltConf
			Total	C	F	N	O		
6	H	1	42	30	2	5	5	0	0

- Molecule 7 is SUGAR (ALPHA-D-GLUCOSE) (three-letter code: GLC) (formula:  $C_6H_{12}O_6$ ).



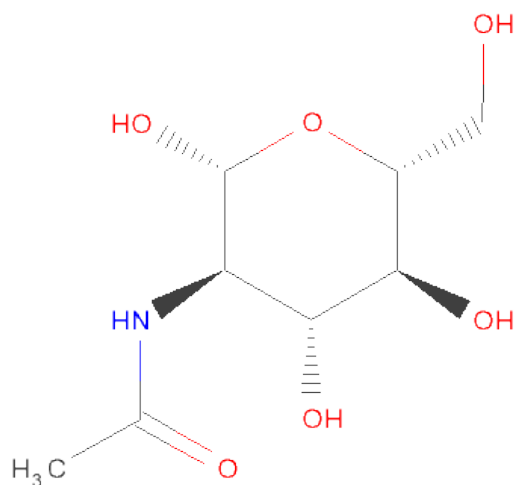
Mol	Chain	Residues	Atoms			ZeroOcc	AltConf
			Total	C	O		
7	L	1	12	6	6	0	0

- Molecule 8 is SUGAR (ALPHA-L-FUCOSE) (three-letter code: FUC) (formula:  $C_6H_{12}O_5$ ).



Mol	Chain	Residues	Atoms			ZeroOcc	AltConf
8	L	1	Total	C	O	0	0
			11	6	5		

- Molecule 9 is SUGAR (N-ACETYL-D-GLUCOSAMINE) (three-letter code: NAG) (formula:  $C_8H_{15}NO_6$ ).



Mol	Chain	Residues	Atoms				ZeroOcc	AltConf
9	U	1	Total	C	N	O	0	0
			14	8	1	5		

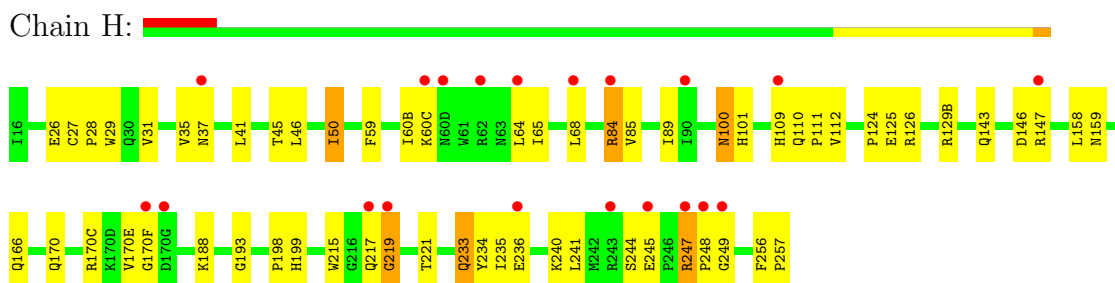
- Molecule 10 is water.

Mol	Chain	Residues	Atoms		ZeroOcc	AltConf
10	H	149	Total 149	O 149	0	0
10	L	59	Total 59	O 59	0	0
10	T	64	Total 64	O 64	0	0
10	U	56	Total 56	O 56	0	0

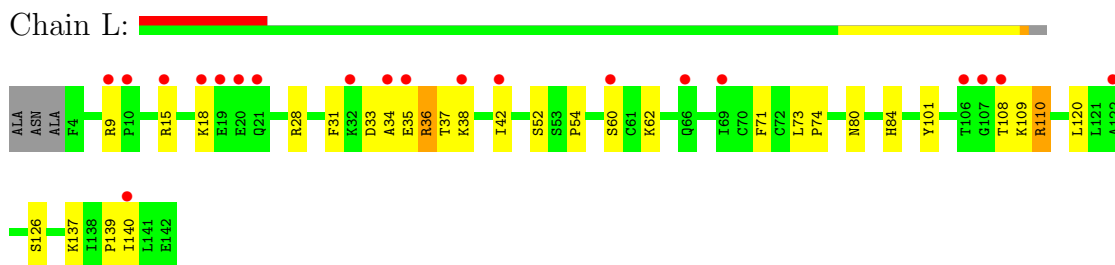
### 3 Residue-property plots

These plots are drawn for all protein, RNA and DNA chains in the entry. The first graphic for a chain summarises the proportions of errors displayed in the second graphic. The second graphic shows the sequence view annotated by issues in geometry and electron density. Residues are color-coded according to the number of geometric quality criteria for which they contain at least one outlier: green = 0, yellow = 1, orange = 2 and red = 3 or more. A red dot above a residue indicates a poor fit to the electron density ( $RSRZ > 2$ ). Stretches of 2 or more consecutive residues without any outlier are shown as a green connector. Residues present in the sample, but not in the model, are shown in grey.

#### • Molecule 1: COAGULATION FACTOR VII PRECURSOR



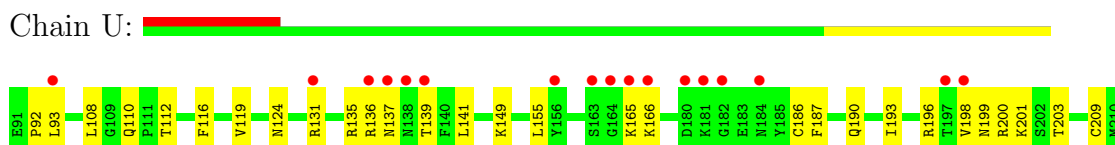
#### • Molecule 2: COAGULATION FACTOR VII PRECURSOR



#### • Molecule 3: TISSUE FACTOR PRECURSOR



#### • Molecule 4: TISSUE FACTOR PRECURSOR



## 4 Data and refinement statistics

Property	Value	Source
Space group	P 21 21 21	Depositor
Cell constants a, b, c, $\alpha$ , $\beta$ , $\gamma$	70.99Å 81.30Å 125.86Å 90.00° 90.00° 90.00°	Depositor
Resolution (Å)	50.00 – 1.72 19.54 – 1.73	Depositor EDS
% Data completeness (in resolution range)	88.8 (50.00-1.72) 92.0 (19.54-1.73)	Depositor EDS
$R_{merge}$	0.04	Depositor
$R_{sym}$	(Not available)	Depositor
$\langle I/\sigma(I) \rangle$ <sup>1</sup>	0.98 (at 1.72Å)	Xtriage
Refinement program	CNS	Depositor
R, $R_{free}$	0.229 , (Not available) 0.229 , (Not available)	Depositor DCC
$R_{free}$ test set	No test flags present.	DCC
Wilson B-factor (Å <sup>2</sup> )	19.9	Xtriage
Anisotropy	0.370	Xtriage
Bulk solvent $k_{sol}$ (e/Å <sup>3</sup> ), $B_{sol}$ (Å <sup>2</sup> )	0.42 , 41.1	EDS
Estimated twinning fraction	No twinning to report.	Xtriage
L-test for twinning	$\langle  L  \rangle = 0.51$ , $\langle L^2 \rangle = 0.35$	Xtriage
Outliers	0 of 74805 reflections	Xtriage
$F_o, F_c$ correlation	0.93	EDS
Total number of atoms	5058	wwPDB-VP
Average B, all atoms (Å <sup>2</sup> )	24.0	wwPDB-VP

Xtriage's analysis on translational NCS is as follows: *The largest off-origin peak in the Patterson function is 4.63% of the height of the origin peak. No significant pseudotranslation is detected.*

<sup>1</sup>Intensities estimated from amplitudes.



## 5 Model quality

### 5.1 Standard geometry

Bond lengths and bond angles in the following residue types are not validated in this section: NAG, CA, GLC, FUC, GIL, CGU

The Z score for a bond length (or angle) is the number of standard deviations the observed value is removed from the expected value. A bond length (or angle) with  $|Z| > 5$  is considered an outlier worth inspection. RMSZ is the root-mean-square of all Z scores of the bond lengths (or angles).

Mol	Chain	Bond lengths		Bond angles	
		RMSZ	$\# Z  > 5$	RMSZ	$\# Z  > 5$
1	H	0.27	0/2024	0.65	1/2755 (0.0%)
2	L	0.26	0/1011	0.53	0/1349
3	T	0.29	0/631	0.68	1/860 (0.1%)
4	U	0.27	0/958	0.63	0/1299
All	All	0.27	0/4624	0.63	2/6263 (0.0%)

There are no bond length outliers.

All (2) bond angle outliers are listed below:

Mol	Chain	Res	Type	Atoms	Z	Observed(°)	Ideal(°)
1	H	199	HIS	N-CA-C	-6.55	93.30	111.00
3	T	20	LYS	N-CA-C	-5.07	97.31	111.00

There are no chirality outliers.

There are no planarity outliers.

### 5.2 Close contacts

In the following table, the Non-H and H(model) columns list the number of non-hydrogen atoms and hydrogen atoms in the chain respectively. The H(added) column lists the number of hydrogens added by MolProbity. The Clashes column lists the number of clashes within the asymmetric unit, and the number in parentheses is this value normalized per 1000 atoms of the molecule in the chain. The Symm-Clashes column gives symmetry related clashes, in the same way as for the Clashes column.

Mol	Chain	Non-H	H(model)	H(added)	Clashes	Symm-Clashes
1	H	1974	0	1950	48	0
2	L	1117	0	970	34	0
3	T	615	0	598	9	0

*Continued on next page...*

*Continued from previous page...*

Mol	Chain	Non-H	H(model)	H(added)	Clashes	Symm-Clashes
4	U	940	0	911	25	0
5	A	3	0	0	0	0
5	H	1	0	0	0	0
5	L	1	0	0	0	0
6	H	42	0	33	3	0
7	L	12	0	12	2	0
8	L	11	0	12	4	0
9	U	14	0	13	1	0
10	H	149	0	0	3	0
10	L	59	0	0	3	0
10	T	64	0	0	2	0
10	U	56	0	0	4	0
All	All	5058	0	4499	106	0

Clashscore is defined as the number of clashes calculated for the entry per 1000 atoms (including hydrogens) of the entry. The overall clashscore for this entry is 11.

The worst 5 of 106 close contacts within the same asymmetric unit are listed below.

Atom-1	Atom-2	Distance(Å)	Clash(Å)
1:H:68:LEU:HD12	1:H:112:VAL:HG11	1.37	1.04
2:L:60:SER:HB3	8:L:1145:FUC:O1	1.59	1.01
2:L:74:PRO:HA	4:U:135:ARG:HH12	1.38	0.87
2:L:31:PHE:HB2	2:L:37:THR:HG22	1.61	0.81
2:L:60:SER:HB3	8:L:1145:FUC:C1	2.10	0.81

There are no symmetry-related clashes.

## 5.3 Torsion angles

### 5.3.1 Protein backbone ⓘ

In the following table, the Percentiles column shows the percent Ramachandran outliers of the chain as a percentile score with respect to all X-ray entries followed by that with respect to entries of similar resolution. The Analysed column shows the number of residues for which the backbone conformation was analysed, and the total number of residues.

Mol	Chain	Analysed	Favoured	Allowed	Outliers	Percentiles	
1	H	252/254 (99%)	238 (94%)	12 (5%)	2 (1%)	27	8
2	L	127/142 (89%)	122 (96%)	5 (4%)	0	100	100
3	T	73/75 (97%)	72 (99%)	1 (1%)	0	100	100

*Continued on next page...*

*Continued from previous page...*

Mol	Chain	Analysed	Favoured	Allowed	Outliers	Percentiles	
4	U	112/116 (97%)	107 (96%)	5 (4%)	0	100	100
All	All	564/587 (96%)	539 (96%)	23 (4%)	2 (0%)	43	22

All (2) Ramachandran outliers are listed below:

Mol	Chain	Res	Type
1	H	219	GLY
1	H	170(F)	GLY

### 5.3.2 Protein sidechains ⓘ

In the following table, the Percentiles column shows the percent sidechain outliers of the chain as a percentile score with respect to all X-ray entries followed by that with respect to entries of similar resolution. The Analysed column shows the number of residues for which the sidechain conformation was analysed, and the total number of residues.

Mol	Chain	Analysed	Rotameric	Outliers	Percentiles	
1	H	216/216 (100%)	208 (96%)	8 (4%)	45	20
2	L	113/114 (99%)	111 (98%)	2 (2%)	71	52
3	T	70/70 (100%)	69 (99%)	1 (1%)	78	62
4	U	109/109 (100%)	108 (99%)	1 (1%)	87	79
All	All	508/509 (100%)	496 (98%)	12 (2%)	61	39

5 of 12 residues with a non-rotameric sidechain are listed below:

Mol	Chain	Res	Type
1	H	159	ASN
1	H	233	GLN
2	L	110	ARG
1	H	100	ASN
2	L	36	ARG

Some sidechains can be flipped to improve hydrogen bonding and reduce clashes. 5 of 14 such sidechains are listed below:

Mol	Chain	Res	Type
1	H	202	HIS
1	H	233	GLN
3	T	31	ASN

*Continued on next page...*

*Continued from previous page...*

Mol	Chain	Res	Type
1	H	159	ASN
2	L	84	HIS

### 5.3.3 RNA ⓘ

There are no RNA chains in this entry.

## 5.4 Non-standard residues in protein, DNA, RNA chains ⓘ

10 non-standard protein/DNA/RNA residues are modelled in this entry.

In the following table, the Counts columns list the number of bonds (or angles) for which Mogul statistics could be retrieved, the number of bonds (or angles) that are observed in the model and the number of bonds (or angles) that are defined in the chemical component dictionary. The Link column lists molecule types, if any, to which the group is linked. The Z score for a bond length (or angle) is the number of standard deviations the observed value is removed from the expected value. A bond length (or angle) with  $|Z| > 2$  is considered an outlier worth inspection. RMSZ is the root-mean-square of all Z scores of the bond lengths (or angles).

Mol	Type	Chain	Res	Link	Bond lengths			Bond angles		
					Counts	RMSZ	$\# Z  > 2$	Counts	RMSZ	$\# Z  > 2$
2	CGU	L	14	2,5	11,11,12	5.12	3 (27%)	12,14,16	1.88	5 (41%)
2	CGU	L	16	2,5	11,11,12	5.07	3 (27%)	12,14,16	1.88	5 (41%)
2	CGU	L	19	2,5	11,11,12	5.07	3 (27%)	12,14,16	2.00	6 (50%)
2	CGU	L	20	2	11,11,12	5.17	3 (27%)	12,14,16	1.84	5 (41%)
2	CGU	L	25	2,5	11,11,12	5.42	4 (36%)	12,14,16	1.92	5 (41%)
2	CGU	L	26	2,5	11,11,12	5.23	2 (18%)	12,14,16	2.18	5 (41%)
2	CGU	L	29	2,5	11,11,12	5.02	2 (18%)	12,14,16	2.05	6 (50%)
2	CGU	L	35	2	11,11,12	4.97	2 (18%)	12,14,16	1.88	5 (41%)
2	CGU	L	6	2	11,11,12	5.13	3 (27%)	12,14,16	1.88	5 (41%)
2	CGU	L	7	2	11,11,12	5.10	2 (18%)	12,14,16	1.92	5 (41%)

In the following table, the Chirals column lists the number of chiral outliers, the number of chiral centers analysed, the number of these observed in the model and the number defined in the chemical component dictionary. Similar counts are reported in the Torsion and Rings columns. '-' means no outliers of that kind were identified.

Mol	Type	Chain	Res	Link	Chirals	Torsions	Rings
2	CGU	L	14	2,5	-	0/12/14/16	0/0/0/0
2	CGU	L	16	2,5	-	0/12/14/16	0/0/0/0

*Continued on next page...*

*Continued from previous page...*

Mol	Type	Chain	Res	Link	Chirals	Torsions	Rings
2	CGU	L	19	2,5	-	0/12/14/16	0/0/0/0
2	CGU	L	20	2	-	0/12/14/16	0/0/0/0
2	CGU	L	25	2,5	-	0/12/14/16	0/0/0/0
2	CGU	L	26	2,5	-	0/12/14/16	0/0/0/0
2	CGU	L	29	2,5	-	0/12/14/16	0/0/0/0
2	CGU	L	35	2	-	0/12/14/16	0/0/0/0
2	CGU	L	6	2	-	0/12/14/16	0/0/0/0
2	CGU	L	7	2	-	0/12/14/16	0/0/0/0

The worst 5 of 27 bond length outliers are listed below:

Mol	Chain	Res	Type	Atoms	Z	Observed(Å)	Ideal(Å)
2	L	25	CGU	O-C	17.40	1.23	1.11
2	L	26	CGU	O-C	16.79	1.23	1.11
2	L	20	CGU	O-C	16.50	1.22	1.11
2	L	6	CGU	O-C	16.47	1.22	1.11
2	L	7	CGU	O-C	16.38	1.22	1.11

The worst 5 of 52 bond angle outliers are listed below:

Mol	Chain	Res	Type	Atoms	Z	Observed(°)	Ideal(°)
2	L	26	CGU	OE22-CD2-CG	3.40	122.41	114.34
2	L	26	CGU	OE21-CD2-CG	-3.36	113.84	122.08
2	L	25	CGU	OE22-CD2-CG	3.36	122.32	114.34
2	L	29	CGU	OE22-CD2-CG	3.35	122.30	114.34
2	L	19	CGU	OE22-CD2-CG	3.24	122.04	114.34

There are no chirality outliers.

There are no torsion outliers.

There are no ring outliers.

## 5.5 Carbohydrates ⓘ

There are no carbohydrates in this entry.

## 5.6 Ligand geometry ⓘ

Of 9 ligands modelled in this entry, 5 are monoatomic - leaving 4 for Mogul analysis.

In the following table, the Counts columns list the number of bonds (or angles) for which Mogul statistics could be retrieved, the number of bonds (or angles) that are observed in the model and the number of bonds (or angles) that are defined in the chemical component dictionary. The Link column lists molecule types, if any, to which the group is linked. The Z score for a bond length (or angle) is the number of standard deviations the observed value is removed from the expected value. A bond length (or angle) with  $|Z| > 2$  is considered an outlier worth inspection. RMSZ is the root-mean-square of all Z scores of the bond lengths (or angles).

Mol	Type	Chain	Res	Link	Bond lengths			Bond angles		
					Counts	RMSZ	# $ Z  > 2$	Counts	RMSZ	# $ Z  > 2$
6	GIL	H	1259	-	44,44,44	1.64	11 (25%)	63,63,63	1.25	6 (9%)
7	GLC	L	1144	-	12,12,12	0.25	0	17,17,17	0.36	0
8	FUC	L	1145	-	11,11,11	0.29	0	16,16,16	0.47	0
9	NAG	U	1211	4	12,14,15	0.39	0	15,19,21	0.76	0

In the following table, the Chirals column lists the number of chiral outliers, the number of chiral centers analysed, the number of these observed in the model and the number defined in the chemical component dictionary. Similar counts are reported in the Torsion and Rings columns. '-' means no outliers of that kind were identified.

Mol	Type	Chain	Res	Link	Chirals	Torsions	Rings
6	GIL	H	1259	-	-	0/37/37/37	0/3/3/3
7	GLC	L	1144	-	-	0/2/22/22	0/1/1/1
8	FUC	L	1145	-	-	0/0/20/20	0/1/1/1
9	NAG	U	1211	4	-	0/6/23/26	0/1/1/1

The worst 5 of 11 bond length outliers are listed below:

Mol	Chain	Res	Type	Atoms	Z	Observed(Å)	Ideal(Å)
6	H	1259	GIL	C12-C11	4.32	1.43	1.38
6	H	1259	GIL	C13-C12	3.05	1.44	1.39
6	H	1259	GIL	C15-N3	2.96	1.36	1.32
6	H	1259	GIL	C23-C24	2.92	1.43	1.39
6	H	1259	GIL	C13-C14	2.42	1.43	1.39

The worst 5 of 6 bond angle outliers are listed below:

Mol	Chain	Res	Type	Atoms	Z	Observed(°)	Ideal(°)
6	H	1259	GIL	C16-N4-C10	5.81	127.64	116.54
6	H	1259	GIL	O1-C11-C12	3.23	122.52	117.72
6	H	1259	GIL	O2-C21-C22	2.35	123.95	119.01
6	H	1259	GIL	O2-C15-C14	-2.29	114.32	117.72
6	H	1259	GIL	O1-C11-N3	-2.24	115.42	119.98

There are no chirality outliers.

There are no torsion outliers.

There are no ring outliers.

## 5.7 Other polymers ⓘ

There are no such residues in this entry.

## 5.8 Polymer linkage issues

There are no chain breaks in this entry.

## 6 Fit of model and data ⓘ

### 6.1 Protein, DNA and RNA chains ⓘ

In the following table, the column labelled ‘#RSRZ> 2’ contains the number (and percentage) of RSRZ outliers, followed by percent RSRZ outliers for the chain as percentile scores relative to all X-ray entries and entries of similar resolution. The OWAB column contains the minimum, median, 95<sup>th</sup> percentile and maximum values of the occupancy-weighted average B-factor per residue. The column labelled ‘Q< 0.9’ lists the number of (and percentage) of residues with an average occupancy less than 0.9.

Mol	Chain	Analysed	<RSRZ>	#RSRZ>2	OWAB(Å <sup>2</sup> )	Q<0.9
1	H	254/254 (100%)	0.46	20 (7%) 13 15	10, 19, 39, 61	1 (0%)
2	L	139/142 (97%)	0.91	20 (14%) 3 4	16, 28, 45, 51	0
3	T	75/75 (100%)	0.21	2 (2%) 52 58	12, 18, 25, 30	0
4	U	116/116 (100%)	0.96	17 (14%) 3 4	15, 23, 50, 55	1 (0%)
All	All	584/587 (99%)	0.63	59 (10%) 8 9	10, 22, 44, 61	2 (0%)

The worst 5 of 59 RSRZ outliers are listed below:

Mol	Chain	Res	Type	RSRZ
4	U	137	ASN	8.8
4	U	181	LYS	6.9
2	L	9	ARG	6.4
1	H	248	PRO	5.8
1	H	170(G)	ASP	5.6

### 6.2 Non-standard residues in protein, DNA, RNA chains ⓘ

In the following table, the Atoms column lists the number of modelled atoms in the group and the number defined in the chemical component dictionary. LLDF column lists the quality of electron density of the group with respect to its neighbouring residues in protein, DNA or RNA chains. The B-factors column lists the minimum, median, 95<sup>th</sup> percentile and maximum values of B factors of atoms in the group. The column labelled ‘Q< 0.9’ lists the number of atoms with occupancy less than 0.9.

Mol	Type	Chain	Res	Atoms	RSR	LLDF	B-factors(Å <sup>2</sup> )	Q<0.9
2	CGU	L	7	12/13	0.17	-	30,33,36,38	0
2	CGU	L	19	12/13	0.33	-	46,51,54,54	0
2	CGU	L	6	12/13	0.21	-	26,34,37,38	0
2	CGU	L	14	12/13	0.25	-	37,46,48,49	0
2	CGU	L	25	12/13	0.18	-	25,26,28,29	0

*Continued on next page...*



*Continued from previous page...*

Mol	Type	Chain	Res	Atoms	RSR	LLDF	B-factors( $\text{\AA}^2$ )	Q<0.9
2	CGU	L	29	12/13	0.13	-	25,27,30,30	0
2	CGU	L	26	12/13	0.21	-	23,29,33,35	0
2	CGU	L	16	12/13	0.16	-	34,35,37,37	0
2	CGU	L	35	12/13	0.47	-	39,51,53,54	0
2	CGU	L	20	12/13	0.31	-	44,50,52,53	0

### 6.3 Carbohydrates

There are no carbohydrates in this entry.

### 6.4 Ligands

In the following table, the Atoms column lists the number of modelled atoms in the group and the number defined in the chemical component dictionary. LLDF column lists the quality of electron density of the group with respect to its neighbouring residues in protein, DNA or RNA chains. The B-factors column lists the minimum, median, 95<sup>th</sup> percentile and maximum values of B factors of atoms in the group. The column labelled 'Q< 0.9' lists the number of atoms with occupancy less than 0.9.

Mol	Type	Chain	Res	Atoms	RSR	LLDF	B-factors( $\text{\AA}^2$ )	Q<0.9
5	CA	A	9	1/1	0.13	-	45,45,45,45	0
9	NAG	U	1211	14/15	0.21	-	24,31,41,41	0
5	CA	H	1258	1/1	0.14	-	29,29,29,29	0
5	CA	L	1143	1/1	0.05	-	28,28,28,28	0
5	CA	A	3	1/1	0.16	-	46,46,46,46	0
5	CA	A	4	1/1	0.12	-	85,85,85,85	0
8	FUC	L	1145	11/11	0.20	-	35,36,39,42	0
6	GIL	H	1259	42/42	0.13	-	14,25,34,36	0
7	GLC	L	1144	12/12	0.21	-	50,52,52,52	0

### 6.5 Other polymers

There are no such residues in this entry.