



Full wwPDB X-ray Structure Validation Report ⓘ

Feb 27, 2014 – 04:09 PM GMT

PDB ID : 3C4N
Title : Crystal structure of DR_0571 protein from *Deinococcus radiodurans* in complex with ADP. Northeast Structural Genomics Consortium Target DrR125
Authors : Forouhar, F.; Chen, Y.; Seetharaman, J.; Mao, L.; Xiao, R.; Cunningham, K.; Owen, L.A.; Maglaqui, M.; Baran, M.C.; Acton, T.B.; Montelione, G.T.; Hunt, J.F.; Tong, L.; Northeast Structural Genomics Consortium (NESG)
Deposited on : 2008-01-30
Resolution : 2.40 Å(reported)

This is a full wwPDB validation report for a publicly released PDB entry.
We welcome your comments at validation@mail.wwpdb.org
A user guide is available at <http://wwpdb.org/ValidationPDFNotes.html>

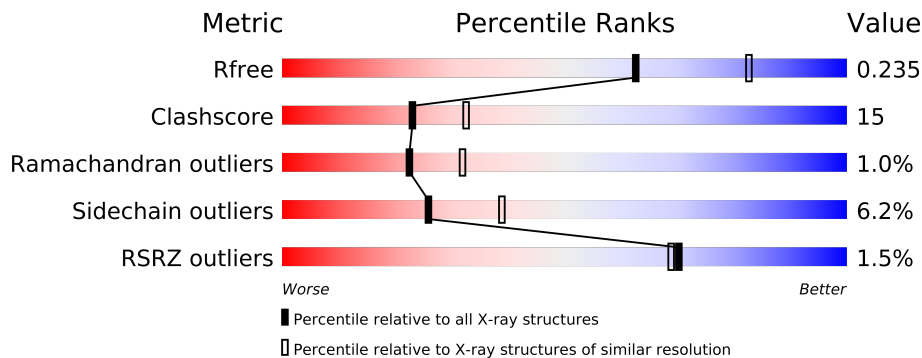
The following versions of software and data (see [references](#)) were used in the production of this report:

MolProbity : 4.02b-467
Mogul : 1.15 2013
Xtriage (Phenix) : dev-1323
EDS : stable22639
Percentile statistics : 21963
Refmac : 5.8.0049
CCP4 : 6.3.0 (Settle)
Ideal geometry (proteins) : Engh & Huber (2001)
Ideal geometry (DNA, RNA) : Parkinson et. al. (1996)
Validation Pipeline (wwPDB-VP) : stable22683

1 Overall quality at a glance

The reported resolution of this entry is 2.40 Å.

Percentile scores (ranging between 0-100) for global validation metrics of the entry are shown in the following graphic. The table shows the number of entries on which the scores are based.



Metric	Whole archive (#Entries)	Similar resolution (#Entries, resolution range(Å))
R_{free}	66092	2207 (2.40-2.40)
Clashscore	79885	2789 (2.40-2.40)
Ramachandran outliers	78287	2736 (2.40-2.40)
Sidechain outliers	78261	2737 (2.40-2.40)
RSRZ outliers	66119	2210 (2.40-2.40)

The table below summarises the geometric issues observed across the polymeric chains and their fit to the electron density. The red, orange, yellow and green segments on the lower bar indicate the fraction of residues that contain outliers for ≥ 3 , 2, 1 and 0 types of geometric quality criteria. The upper red bar (where present) indicates the fraction of residues that have poor fit to the electron density.

Mol	Chain	Length	Quality of chain
1	A	405	
1	B	405	

The following table lists non-polymeric compounds that are outliers for geometric or electron-density-fit criteria:

Mol	Type	Chain	Res	Geometry	Electron density
2	ADP	A	411	-	X

2 Entry composition

There are 3 unique types of molecules in this entry. The entry contains 5674 atoms, of which 0 are hydrogen and 0 are deuterium.

In the tables below, the ZeroOcc column contains the number of atoms modelled with zero occupancy, the AltConf column contains the number of residues with at least one atom in alternate conformation and the Trace column contains the number of residues modelled with at most 2 atoms.

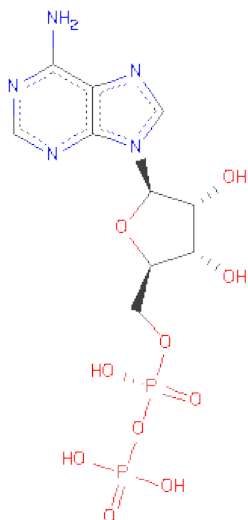
- Molecule 1 is a protein called Uncharacterized protein DR_0571.

Mol	Chain	Residues	Atoms						ZeroOcc	AltConf	Trace
1	A	359	Total	C	N	O	S	Se	0	0	0
			2624	1654	481	486	1	2			
1	B	359	Total	C	N	O	S	Se	0	0	0
			2624	1654	481	486	1	2			

There are 18 discrepancies between the modelled and reference sequences:

Chain	Residue	Modelled	Actual	Comment	Reference
A	397	SER	GLY	SEE REMARK 999	UNP Q9RWU4
A	398	LEU	-	EXPRESSION TAG	UNP Q9RWU4
A	399	GLU	-	EXPRESSION TAG	UNP Q9RWU4
A	400	HIS	-	EXPRESSION TAG	UNP Q9RWU4
A	401	HIS	-	EXPRESSION TAG	UNP Q9RWU4
A	402	HIS	-	EXPRESSION TAG	UNP Q9RWU4
A	403	HIS	-	EXPRESSION TAG	UNP Q9RWU4
A	404	HIS	-	EXPRESSION TAG	UNP Q9RWU4
A	405	HIS	-	EXPRESSION TAG	UNP Q9RWU4
B	397	SER	GLY	SEE REMARK 999	UNP Q9RWU4
B	398	LEU	-	EXPRESSION TAG	UNP Q9RWU4
B	399	GLU	-	EXPRESSION TAG	UNP Q9RWU4
B	400	HIS	-	EXPRESSION TAG	UNP Q9RWU4
B	401	HIS	-	EXPRESSION TAG	UNP Q9RWU4
B	402	HIS	-	EXPRESSION TAG	UNP Q9RWU4
B	403	HIS	-	EXPRESSION TAG	UNP Q9RWU4
B	404	HIS	-	EXPRESSION TAG	UNP Q9RWU4
B	405	HIS	-	EXPRESSION TAG	UNP Q9RWU4

- Molecule 2 is ADENOSINE-5'-DIPHOSPHATE (three-letter code: ADP) (formula: $C_{10}H_{15}N_5O_{10}P_2$).



Mol	Chain	Residues	Atoms					ZeroOcc	AltConf
2	A	1	Total	C	N	O	P	0	0
			27	10	5	10	2		
2	B	1	Total	C	N	O	P	0	0
			27	10	5	10	2		

- Molecule 3 is water.

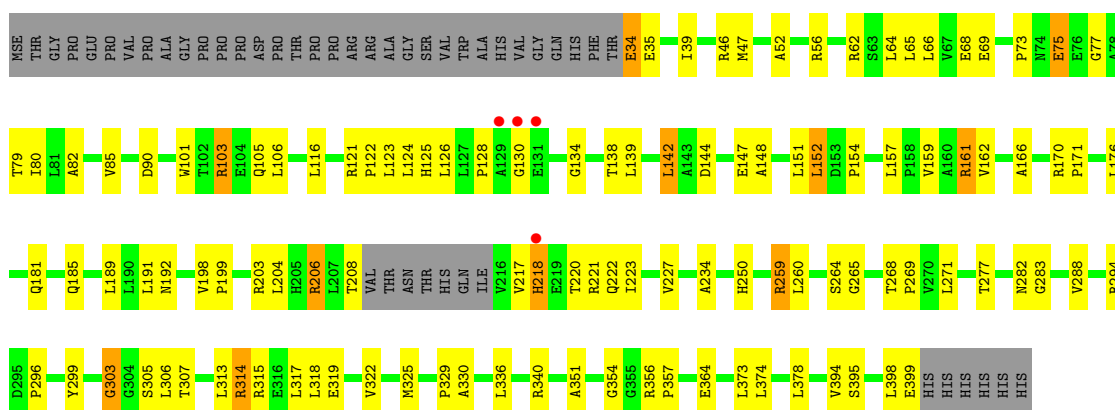
Mol	Chain	Residues	Atoms		ZeroOcc	AltConf
3	A	191	Total	O	0	0
			191	191		
3	B	181	Total	O	0	0
			181	181		

3 Residue-property plots

These plots are drawn for all protein, RNA and DNA chains in the entry. The first graphic for a chain summarises the proportions of errors displayed in the second graphic. The second graphic shows the sequence view annotated by issues in geometry and electron density. Residues are color-coded according to the number of geometric quality criteria for which they contain at least one outlier: green = 0, yellow = 1, orange = 2 and red = 3 or more. A red dot above a residue indicates a poor fit to the electron density ($RSRZ > 2$). Stretches of 2 or more consecutive residues without any outlier are shown as a green connector. Residues present in the sample, but not in the model, are shown in grey.

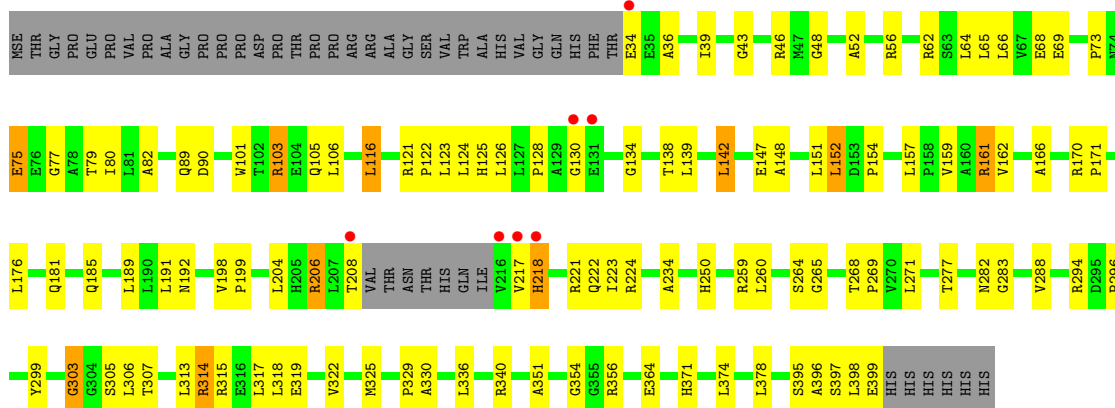
• Molecule 1: Uncharacterized protein DR_0571

Chain A: 



• Molecule 1: Uncharacterized protein DR_0571

Chain B: 



4 Data and refinement statistics

Property	Value	Source
Space group	P 1 21 1	Depositor
Cell constants a, b, c, α , β , γ	83.63Å 67.83Å 83.64Å 90.00° 91.14° 90.00°	Depositor
Resolution (Å)	19.98 – 2.40 29.49 – 2.40	Depositor EDS
% Data completeness (in resolution range)	77.4 (19.98-2.40) 91.5 (29.49-2.40)	Depositor EDS
R_{merge}	0.08	Depositor
R_{sym}	0.10	Depositor
$\langle I/\sigma(I) \rangle$ ¹	2.69 (at 2.39Å)	Xtriage
Refinement program	CNS 1.2	Depositor
R, R_{free}	0.211 , 0.245 0.234 , 0.235	Depositor DCC
R_{free} test set	3238 reflections (9.56%)	DCC
Wilson B-factor (Å ²)	26.9	Xtriage
Anisotropy	0.051	Xtriage
Bulk solvent k_{sol} (e/Å ³), B_{sol} (Å ²)	0.29 , 10.0	EDS
Estimated twinning fraction	0.025 for l,k,-h 0.026 for h,-k,-l 0.470 for l,-k,h	Xtriage
L-test for twinning	$\langle L \rangle = 0.50$, $\langle L^2 \rangle = 0.34$	Xtriage
Outliers	3 of 65400 reflections (0.005%)	Xtriage
F_o, F_c correlation	0.90	EDS
Total number of atoms	5674	wwPDB-VP
Average B, all atoms (Å ²)	28.0	wwPDB-VP

Xtriage's analysis on translational NCS is as follows: *The largest off-origin peak in the Patterson function is 4.63% of the height of the origin peak. No significant pseudotranslation is detected.*

¹Intensities estimated from amplitudes.

5 Model quality

5.1 Standard geometry

Bond lengths and bond angles in the following residue types are not validated in this section: ADP

The Z score for a bond length (or angle) is the number of standard deviations the observed value is removed from the expected value. A bond length (or angle) with $|Z| > 5$ is considered an outlier worth inspection. RMSZ is the root-mean-square of all Z scores of the bond lengths (or angles).

Mol	Chain	Bond lengths		Bond angles	
		RMSZ	$\# Z > 5$	RMSZ	$\# Z > 5$
1	A	0.36	0/2675	0.82	9/3648 (0.2%)
1	B	0.36	0/2675	0.84	9/3648 (0.2%)
All	All	0.36	0/5350	0.83	18/7296 (0.2%)

There are no bond length outliers.

All (18) bond angle outliers are listed below:

Mol	Chain	Res	Type	Atoms	Z	Observed(°)	Ideal(°)
1	B	259	ARG	NE-CZ-NH1	-14.66	112.97	120.30
1	B	206	ARG	NE-CZ-NH1	-14.62	112.99	120.30
1	B	259	ARG	NE-CZ-NH2	14.01	127.30	120.30
1	A	206	ARG	NE-CZ-NH2	-13.92	113.34	120.30
1	A	259	ARG	NE-CZ-NH2	-13.86	113.37	120.30
1	B	206	ARG	NE-CZ-NH2	13.21	126.90	120.30
1	A	259	ARG	NE-CZ-NH1	13.20	126.90	120.30
1	A	206	ARG	NE-CZ-NH1	13.12	126.86	120.30
1	B	314	ARG	NE-CZ-NH1	-12.04	114.28	120.30
1	A	314	ARG	NE-CZ-NH2	-11.86	114.37	120.30
1	B	314	ARG	NE-CZ-NH2	11.19	125.89	120.30
1	A	314	ARG	NE-CZ-NH1	10.68	125.64	120.30
1	B	259	ARG	CD-NE-CZ	7.43	134.01	123.60
1	A	259	ARG	CD-NE-CZ	7.28	133.79	123.60
1	A	206	ARG	CD-NE-CZ	6.86	133.21	123.60
1	B	206	ARG	CD-NE-CZ	6.52	132.72	123.60
1	B	314	ARG	CD-NE-CZ	5.84	131.78	123.60
1	A	314	ARG	CD-NE-CZ	5.33	131.06	123.60

There are no chirality outliers.

There are no planarity outliers.

5.2 Close contacts ⓘ

In the following table, the Non-H and H(model) columns list the number of non-hydrogen atoms and hydrogen atoms in the chain respectively. The H(added) column lists the number of hydrogens added by MolProbity. The Clashes column lists the number of clashes within the asymmetric unit, and the number in parentheses is this value normalized per 1000 atoms of the molecule in the chain. The Symm-Clashes column gives symmetry related clashes, in the same way as for the Clashes column.

Mol	Chain	Non-H	H(model)	H(added)	Clashes	Symm-Clashes
1	A	2624	0	2662	80	0
1	B	2624	0	2662	76	0
2	A	27	0	12	2	0
2	B	27	0	12	2	0
3	A	191	0	0	10	0
3	B	181	0	0	8	0
All	All	5674	0	5348	155	0

Clashscore is defined as the number of clashes calculated for the entry per 1000 atoms (including hydrogens) of the entry. The overall clashscore for this entry is 15.

All (155) close contacts within the same asymmetric unit are listed below.

Atom-1	Atom-2	Distance(Å)	Clash(Å)
1:B:124:LEU:HD22	1:B:162:VAL:HG22	1.52	0.91
1:A:124:LEU:HD22	1:A:162:VAL:HG22	1.53	0.88
1:A:189:LEU:HD11	1:A:191:LEU:HG	1.56	0.87
1:B:189:LEU:HD11	1:B:191:LEU:HG	1.55	0.87
1:B:122:PRO:HG2	1:B:269:PRO:HB3	1.57	0.86
1:A:122:PRO:HG2	1:A:269:PRO:HB3	1.57	0.85
1:B:305:SER:HA	3:B:481:HOH:O	1.77	0.83
1:B:206:ARG:HH12	1:B:221:ARG:HH21	1.27	0.82
1:A:144:ASP:HB2	3:A:468:HOH:O	1.84	0.76
1:A:250:HIS:HD2	1:A:354:GLY:H	1.33	0.76
1:B:250:HIS:HD2	1:B:354:GLY:H	1.34	0.75
1:A:305:SER:HA	3:A:448:HOH:O	1.85	0.74
1:A:265:GLY:O	1:A:268:THR:HG22	1.87	0.74
1:B:265:GLY:O	1:B:268:THR:HG22	1.88	0.73
1:A:181:GLN:O	1:A:185:GLN:HG2	1.91	0.71
1:B:181:GLN:O	1:B:185:GLN:HG2	1.90	0.71
1:B:189:LEU:CD1	1:B:191:LEU:HG	2.20	0.70
1:B:296:PRO:HG2	1:B:299:TYR:HB2	1.74	0.70
1:A:189:LEU:CD1	1:A:191:LEU:HG	2.21	0.69
1:A:296:PRO:HG2	1:A:299:TYR:HB2	1.73	0.68
1:A:206:ARG:HH12	1:A:221:ARG:HH21	1.40	0.67

Continued on next page...

Continued from previous page...

Atom-1	Atom-2	Distance(Å)	Clash(Å)
1:A:259:ARG:HD2	3:A:488:HOH:O	1.93	0.67
1:B:124:LEU:CD2	1:B:162:VAL:HG22	2.26	0.66
1:B:206:ARG:NH1	1:B:221:ARG:HH21	1.94	0.65
1:A:124:LEU:CD2	1:A:162:VAL:HG22	2.27	0.64
1:B:265:GLY:H	1:B:268:THR:CG2	2.11	0.64
1:A:103:ARG:NH2	3:A:467:HOH:O	2.26	0.63
1:A:265:GLY:H	1:A:268:THR:CG2	2.12	0.62
1:A:299:TYR:OH	1:A:314:ARG:HD2	2.00	0.62
1:B:189:LEU:HD11	1:B:191:LEU:CG	2.27	0.61
1:A:152:LEU:HA	1:A:329:PRO:HD2	1.82	0.61
1:A:189:LEU:HD11	1:A:191:LEU:CG	2.28	0.61
1:B:204:LEU:HD11	1:B:223:ILE:HD13	1.81	0.61
1:B:315:ARG:O	1:B:319:GLU:HG3	2.01	0.61
1:B:152:LEU:HA	1:B:329:PRO:HD2	1.82	0.61
1:A:130:GLY:HA2	1:A:159:VAL:HG21	1.82	0.61
1:B:103:ARG:NH2	3:B:549:HOH:O	2.33	0.60
1:A:315:ARG:O	1:A:319:GLU:HG3	2.00	0.60
1:B:130:GLY:HA2	1:B:159:VAL:HG21	1.82	0.60
1:A:294:ARG:HD2	3:A:479:HOH:O	2.02	0.60
1:A:204:LEU:HD11	1:A:223:ILE:HD13	1.83	0.60
1:B:265:GLY:H	1:B:268:THR:HG21	1.67	0.59
1:A:265:GLY:H	1:A:268:THR:HG21	1.67	0.59
1:A:77:GLY:O	1:A:80:ILE:HG22	2.03	0.57
1:A:170:ARG:NE	3:A:585:HOH:O	2.37	0.57
1:B:126:LEU:HD13	1:B:157:LEU:HD13	1.86	0.57
1:A:126:LEU:HD13	1:A:157:LEU:HD13	1.86	0.56
1:B:77:GLY:O	1:B:80:ILE:HG22	2.05	0.56
1:A:394:VAL:O	1:A:398:LEU:HD13	2.05	0.56
1:B:90:ASP:HB3	1:B:378:LEU:HD22	1.88	0.56
1:A:250:HIS:HE1	1:A:364:GLU:OE2	1.89	0.56
1:A:395:SER:O	1:A:399:GLU:HG3	2.06	0.55
1:A:35:GLU:HG3	3:A:546:HOH:O	2.06	0.55
1:B:250:HIS:HE1	1:B:364:GLU:OE2	1.90	0.55
1:A:82:ALA:HB3	1:A:171:PRO:HG2	1.89	0.54
1:B:89:GLN:NE2	3:B:563:HOH:O	2.38	0.54
1:B:68:GLU:OE1	2:B:411:ADP:O2'	2.26	0.54
1:A:90:ASP:HB3	1:A:378:LEU:HD22	1.88	0.54
1:A:68:GLU:OE1	2:A:411:ADP:O2'	2.26	0.53
1:A:303:GLY:CA	1:A:314:ARG:HA	2.39	0.53
1:A:161:ARG:HH11	1:A:161:ARG:HG2	1.74	0.53
1:A:85:VAL:HB	3:A:491:HOH:O	2.08	0.52
1:B:52:ALA:O	1:B:56:ARG:HG2	2.10	0.52

Continued on next page...

Continued from previous page...

Atom-1	Atom-2	Distance(Å)	Clash(Å)
1:B:217:VAL:HG22	1:B:218:HIS:HD2	1.74	0.52
1:A:277:THR:HB	1:A:288:VAL:HB	1.91	0.52
1:B:303:GLY:CA	1:B:314:ARG:HA	2.39	0.52
1:B:395:SER:O	1:B:399:GLU:HG3	2.09	0.52
1:B:82:ALA:HB3	1:B:171:PRO:HG2	1.91	0.51
1:A:52:ALA:O	1:A:56:ARG:HG2	2.11	0.51
1:B:277:THR:HB	1:B:288:VAL:HB	1.92	0.51
1:B:313:LEU:N	1:B:313:LEU:HD12	2.25	0.51
1:A:250:HIS:CE1	1:A:364:GLU:OE2	2.64	0.51
1:B:161:ARG:HH11	1:B:161:ARG:HG2	1.75	0.51
1:A:313:LEU:N	1:A:313:LEU:HD12	2.25	0.51
1:A:250:HIS:CD2	1:A:354:GLY:H	2.22	0.50
1:A:217:VAL:HG22	1:A:218:HIS:HD2	1.75	0.50
1:A:340:ARG:HB2	1:A:340:ARG:NH1	2.27	0.50
1:B:62:ARG:NH2	1:B:398:LEU:HB3	2.27	0.49
1:B:303:GLY:HA3	1:B:314:ARG:HA	1.94	0.49
1:A:69:GLU:O	1:A:192:ASN:HA	2.13	0.49
1:A:191:LEU:HD12	1:B:191:LEU:HD12	1.94	0.49
1:B:250:HIS:CD2	1:B:354:GLY:H	2.23	0.49
1:B:250:HIS:CE1	1:B:364:GLU:OE2	2.65	0.49
1:A:303:GLY:HA3	1:A:314:ARG:HA	1.94	0.49
1:B:340:ARG:NH1	1:B:340:ARG:HB2	2.27	0.49
1:A:126:LEU:HD13	1:A:152:LEU:HD13	1.96	0.48
1:B:151:LEU:HA	1:B:330:ALA:HB2	1.96	0.48
1:B:371:HIS:HD2	3:B:413:HOH:O	1.96	0.48
1:B:303:GLY:HA2	3:B:416:HOH:O	2.14	0.48
1:A:73:PRO:HG3	1:A:176:LEU:HD13	1.96	0.47
1:B:69:GLU:O	1:B:192:ASN:HA	2.14	0.47
1:B:138:THR:HG22	1:B:142:LEU:HD22	1.97	0.47
1:B:73:PRO:HG3	1:B:176:LEU:HD13	1.96	0.47
1:B:126:LEU:HD13	1:B:152:LEU:HD13	1.96	0.47
1:B:294:ARG:HD2	3:B:486:HOH:O	2.13	0.47
1:B:264:SER:HB3	1:B:283:GLY:C	2.35	0.47
1:A:138:THR:HG22	1:A:142:LEU:HD22	1.97	0.46
1:A:151:LEU:HA	1:A:330:ALA:HB2	1.96	0.46
1:A:79:THR:O	1:A:171:PRO:HB2	2.15	0.46
1:B:147:GLU:OE2	1:B:268:THR:HB	2.16	0.46
1:B:139:LEU:HD13	3:B:575:HOH:O	2.15	0.46
1:A:264:SER:HB3	1:A:283:GLY:C	2.35	0.46
1:B:79:THR:O	1:B:171:PRO:HB2	2.15	0.46
1:B:396:ALA:C	1:B:398:LEU:H	2.19	0.46
1:B:101:TRP:CZ3	1:B:105:GLN:HG3	2.52	0.45

Continued on next page...

Continued from previous page...

Atom-1	Atom-2	Distance(Å)	Clash(Å)
1:A:234:ALA:HA	1:A:351:ALA:HB2	1.98	0.45
1:A:101:TRP:CZ3	1:A:105:GLN:HG3	2.52	0.45
1:B:260:LEU:HD12	1:B:336:LEU:N	2.32	0.45
1:B:198:VAL:HG21	1:B:222:GLN:NE2	2.32	0.44
1:B:322:VAL:HA	1:B:325:MSE:HE3	1.99	0.44
1:B:198:VAL:HB	1:B:199:PRO:HD2	2.00	0.44
1:A:139:LEU:HD11	1:A:154:PRO:HB3	2.00	0.44
1:A:322:VAL:HA	1:A:325:MSE:HE3	1.99	0.44
1:A:198:VAL:HG21	1:A:222:GLN:NE2	2.32	0.44
1:B:306:LEU:HG	1:B:307:THR:HG22	2.00	0.43
1:B:234:ALA:HA	1:B:351:ALA:HB2	1.99	0.43
1:B:170:ARG:NE	3:B:592:HOH:O	2.51	0.43
1:A:34:GLU:HB3	1:A:35:GLU:H	1.62	0.43
1:A:306:LEU:HG	1:A:307:THR:HG22	2.00	0.43
1:B:139:LEU:HD11	1:B:154:PRO:HB3	1.99	0.43
1:A:356:ARG:HA	1:A:357:PRO:HD3	1.90	0.43
1:A:46:ARG:HG2	2:A:411:ADP:O2B	2.19	0.43
1:A:260:LEU:HD12	1:A:336:LEU:N	2.34	0.43
1:B:123:LEU:C	1:B:123:LEU:HD23	2.39	0.43
1:A:147:GLU:OE2	1:A:268:THR:HB	2.18	0.42
1:A:198:VAL:HB	1:A:199:PRO:HD2	2.01	0.42
1:A:62:ARG:HH21	1:A:398:LEU:HB3	1.84	0.42
1:B:75:GLU:HG2	1:B:75:GLU:O	2.20	0.42
1:A:62:ARG:NH2	1:A:398:LEU:HB3	2.34	0.42
1:A:39:ILE:O	1:A:64:LEU:HA	2.19	0.42
1:B:46:ARG:HG2	2:B:411:ADP:O2B	2.20	0.42
1:B:39:ILE:O	1:B:64:LEU:HA	2.19	0.42
1:B:148:ALA:HB1	1:B:271:LEU:HD11	2.02	0.42
1:B:116:LEU:HD23	1:B:116:LEU:HA	1.84	0.42
1:A:294:ARG:HH11	1:A:294:ARG:HG2	1.85	0.42
1:A:121:ARG:O	1:A:166:ALA:HB3	2.19	0.42
1:A:208:THR:CG2	1:A:217:VAL:HG12	2.50	0.42
1:B:121:ARG:O	1:B:166:ALA:HB3	2.20	0.41
1:A:227:VAL:HG21	1:A:398:LEU:HD11	2.02	0.41
1:A:148:ALA:HB1	1:A:271:LEU:HD11	2.02	0.41
1:B:43:GLY:O	1:B:48:GLY:HA3	2.19	0.41
1:A:121:ARG:HG2	1:A:269:PRO:HA	2.02	0.41
1:B:121:ARG:HG2	1:B:269:PRO:HA	2.03	0.41
1:A:139:LEU:HD13	3:A:588:HOH:O	2.21	0.41
1:A:47:MSE:CE	1:A:373:LEU:HD11	2.50	0.41
1:A:123:LEU:C	1:A:123:LEU:HD23	2.41	0.41
1:A:303:GLY:HA2	3:A:420:HOH:O	2.21	0.41

Continued on next page...

Continued from previous page...

Atom-1	Atom-2	Distance(Å)	Clash(Å)
1:B:62:ARG:HH21	1:B:398:LEU:HB3	1.85	0.41
1:B:208:THR:CG2	1:B:217:VAL:HG12	2.50	0.41
1:B:356:ARG:HG2	1:B:356:ARG:HH11	1.86	0.41
1:B:294:ARG:HH11	1:B:294:ARG:HG2	1.86	0.41
1:A:203:ARG:HH11	1:A:203:ARG:HG3	1.86	0.41
1:B:36:ALA:HB2	1:B:224:ARG:HB2	2.03	0.40
1:A:75:GLU:O	1:A:75:GLU:HG2	2.21	0.40
1:A:203:ARG:CG	1:A:220:THR:HG23	2.51	0.40

There are no symmetry-related clashes.

5.3 Torsion angles

5.3.1 Protein backbone ⓘ

In the following table, the Percentiles column shows the percent Ramachandran outliers of the chain as a percentile score with respect to all X-ray entries followed by that with respect to entries of similar resolution. The Analysed column shows the number of residues for which the backbone conformation was analysed, and the total number of residues.

Mol	Chain	Analysed	Favoured	Allowed	Outliers	Percentiles	
1	A	355/405 (88%)	334 (94%)	18 (5%)	3 (1%)	27	39
1	B	355/405 (88%)	332 (94%)	19 (5%)	4 (1%)	21	29
All	All	710/810 (88%)	666 (94%)	37 (5%)	7 (1%)	22	32

All (7) Ramachandran outliers are listed below:

Mol	Chain	Res	Type
1	A	128	PRO
1	A	303	GLY
1	B	128	PRO
1	B	303	GLY
1	B	397	SER
1	A	134	GLY
1	B	134	GLY

5.3.2 Protein sidechains ⓘ

In the following table, the Percentiles column shows the percent sidechain outliers of the chain as a percentile score with respect to all X-ray entries followed by that with respect to entries of

similar resolution. The Analysed column shows the number of residues for which the sidechain conformation was analysed, and the total number of residues.

Mol	Chain	Analysed	Rotameric	Outliers	Percentiles	
1	A	259/295 (88%)	243 (94%)	16 (6%)	26	39
1	B	259/295 (88%)	243 (94%)	16 (6%)	26	39
All	All	518/590 (88%)	486 (94%)	32 (6%)	26	39

All (32) residues with a non-rotameric sidechain are listed below:

Mol	Chain	Res	Type
1	A	34	GLU
1	A	65	LEU
1	A	66	LEU
1	A	75	GLU
1	A	103	ARG
1	A	106	LEU
1	A	116	LEU
1	A	125	HIS
1	A	142	LEU
1	A	152	LEU
1	A	161	ARG
1	A	218	HIS
1	A	282	ASN
1	A	317	LEU
1	A	318	LEU
1	A	374	LEU
1	B	34	GLU
1	B	65	LEU
1	B	66	LEU
1	B	75	GLU
1	B	103	ARG
1	B	106	LEU
1	B	116	LEU
1	B	125	HIS
1	B	142	LEU
1	B	152	LEU
1	B	161	ARG
1	B	218	HIS
1	B	282	ASN
1	B	317	LEU
1	B	318	LEU
1	B	374	LEU

Some sidechains can be flipped to improve hydrogen bonding and reduce clashes. All (17) such sidechains are listed below:

Mol	Chain	Res	Type
1	A	89	GLN
1	A	105	GLN
1	A	218	HIS
1	A	222	GLN
1	A	242	GLN
1	A	250	HIS
1	A	267	GLN
1	A	371	HIS
1	B	57	GLN
1	B	89	GLN
1	B	105	GLN
1	B	218	HIS
1	B	222	GLN
1	B	242	GLN
1	B	250	HIS
1	B	267	GLN
1	B	371	HIS

5.3.3 RNA ⓘ

There are no RNA chains in this entry.

5.4 Non-standard residues in protein, DNA, RNA chains ⓘ

There are no non-standard protein/DNA/RNA residues in this entry.

5.5 Carbohydrates ⓘ

There are no carbohydrates in this entry.

5.6 Ligand geometry ⓘ

2 ligands are modelled in this entry.

In the following table, the Counts columns list the number of bonds (or angles) for which Mogul statistics could be retrieved, the number of bonds (or angles) that are observed in the model and the number of bonds (or angles) that are defined in the chemical component dictionary. The Link column lists molecule types, if any, to which the group is linked. The Z score for a bond length (or angle) is the number of standard deviations the observed value is removed from the expected

value. A bond length (or angle) with $|Z| > 2$ is considered an outlier worth inspection. RMSZ is the root-mean-square of all Z scores of the bond lengths (or angles).

Mol	Type	Chain	Res	Link	Bond lengths			Bond angles		
					Counts	RMSZ	$\# Z > 2$	Counts	RMSZ	$\# Z > 2$
2	ADP	A	411	-	29,29,29	1.47	4 (13%)	45,45,45	2.65	10 (22%)
2	ADP	B	411	-	29,29,29	1.47	4 (13%)	45,45,45	2.65	10 (22%)

In the following table, the Chirals column lists the number of chiral outliers, the number of chiral centers analysed, the number of these observed in the model and the number defined in the chemical component dictionary. Similar counts are reported in the Torsion and Rings columns. '-' means no outliers of that kind were identified.

Mol	Type	Chain	Res	Link	Chirals	Torsions	Rings
2	ADP	A	411	-	-	0/16/32/32	0/1/3/3
2	ADP	B	411	-	-	0/16/32/32	0/1/3/3

All (8) bond length outliers are listed below:

Mol	Chain	Res	Type	Atoms	Z	Observed(Å)	Ideal(Å)
2	B	411	ADP	C8-N9	2.86	1.40	1.36
2	A	411	ADP	C4-N3	2.85	1.40	1.35
2	A	411	ADP	C8-N9	2.83	1.40	1.36
2	B	411	ADP	C4-N3	2.82	1.39	1.35
2	B	411	ADP	O4'-C1'	2.81	1.45	1.41
2	A	411	ADP	O4'-C1'	2.78	1.45	1.41
2	A	411	ADP	C6-N6	2.03	1.41	1.35
2	B	411	ADP	C6-N6	2.02	1.41	1.35

All (20) bond angle outliers are listed below:

Mol	Chain	Res	Type	Atoms	Z	Observed(°)	Ideal(°)
2	A	411	ADP	N3-C2-N1	-7.54	122.40	128.71
2	B	411	ADP	N3-C2-N1	-7.50	122.44	128.71
2	A	411	ADP	O4'-C1'-N9	-7.22	101.73	108.44
2	B	411	ADP	O4'-C1'-N9	-7.19	101.75	108.44
2	B	411	ADP	PA-O3A-PB	-6.23	113.43	131.68
2	A	411	ADP	PA-O3A-PB	-6.22	113.45	131.68
2	A	411	ADP	C4'-O4'-C1'	-5.89	103.35	109.75
2	B	411	ADP	C4'-O4'-C1'	-5.88	103.36	109.75
2	B	411	ADP	N3-C4-N9	5.12	134.69	125.43
2	A	411	ADP	N3-C4-N9	5.12	134.69	125.43
2	A	411	ADP	O4'-C4'-C5'	4.98	127.12	109.36
2	B	411	ADP	O4'-C4'-C5'	4.97	127.10	109.36

Continued on next page...

Continued from previous page...

Mol	Chain	Res	Type	Atoms	Z	Observed(°)	Ideal(°)
2	A	411	ADP	C5'-C4'-C3'	-4.82	95.92	115.21
2	B	411	ADP	C5'-C4'-C3'	-4.81	95.95	115.21
2	A	411	ADP	C5-C4-N3	-3.59	117.88	125.70
2	B	411	ADP	C5-C4-N3	-3.59	117.89	125.70
2	A	411	ADP	C4-C5-N7	-2.77	107.15	109.52
2	B	411	ADP	C4-C5-N7	-2.77	107.15	109.52
2	A	411	ADP	C2-N3-C4	2.63	121.51	114.01
2	B	411	ADP	C2-N3-C4	2.63	121.50	114.01

There are no chirality outliers.

There are no torsion outliers.

There are no ring outliers.

5.7 Other polymers ⓘ

There are no such residues in this entry.

5.8 Polymer linkage issues

There are no chain breaks in this entry.

6 Fit of model and data ⓘ

6.1 Protein, DNA and RNA chains ⓘ

In the following table, the column labelled ‘#RSRZ> 2’ contains the number (and percentage) of RSRZ outliers, followed by percent RSRZ outliers for the chain as percentile scores relative to all X-ray entries and entries of similar resolution. The OWAB column contains the minimum, median, 95th percentile and maximum values of the occupancy-weighted average B-factor per residue. The column labelled ‘Q< 0.9’ lists the number of (and percentage) of residues with an average occupancy less than 0.9.

Mol	Chain	Analysed	<RSRZ>	#RSRZ>2	OWAB(Å ²)	Q<0.9
1	A	359/405 (88%)	-0.32	4 (1%) 77 77	8, 25, 54, 78	0
1	B	359/405 (88%)	-0.29	7 (1%) 64 61	8, 24, 54, 76	0
All	All	718/810 (88%)	-0.30	11 (1%) 70 69	8, 25, 54, 78	0

All (11) RSRZ outliers are listed below:

Mol	Chain	Res	Type	RSRZ
1	A	130	GLY	5.2
1	A	131	GLU	3.6
1	B	130	GLY	3.4
1	B	131	GLU	3.1
1	B	217	VAL	2.7
1	B	218	HIS	2.6
1	A	129	ALA	2.5
1	B	208	THR	2.4
1	B	216	VAL	2.2
1	A	218	HIS	2.1
1	B	34	GLU	2.0

6.2 Non-standard residues in protein, DNA, RNA chains ⓘ

There are no non-standard protein/DNA/RNA residues in this entry.

6.3 Carbohydrates ⓘ

There are no carbohydrates in this entry.

6.4 Ligands

In the following table, the Atoms column lists the number of modelled atoms in the group and the number defined in the chemical component dictionary. LLDF column lists the quality of electron density of the group with respect to its neighbouring residues in protein, DNA or RNA chains. The B-factors column lists the minimum, median, 95th percentile and maximum values of B factors of atoms in the group. The column labelled 'Q< 0.9' lists the number of atoms with occupancy less than 0.9.

Mol	Type	Chain	Res	Atoms	RSR	LLDF	B-factors(Å ²)	Q<0.9
2	ADP	A	411	27/27	0.14	2.04	1,19,33,34	0
2	ADP	B	411	27/27	0.14	1.34	1,18,32,35	0

6.5 Other polymers

There are no such residues in this entry.