



Full wwPDB X-ray Structure Validation Report

Feb 27, 2014 – 04:51 PM GMT

PDB ID : 3C4X
Title : Crystal Structure of G protein coupled receptor kinase 1 bound to ATP and magnesium chloride at 2.9Å
Authors : Singh, P.; Tesmer, J.J.G.
Deposited on : 2008-01-30
Resolution : 2.90 Å(reported)

This is a full wwPDB validation report for a publicly released PDB entry.
We welcome your comments at validation@mail.wwpdb.org
A user guide is available at <http://wwpdb.org/ValidationPDFNotes.html>

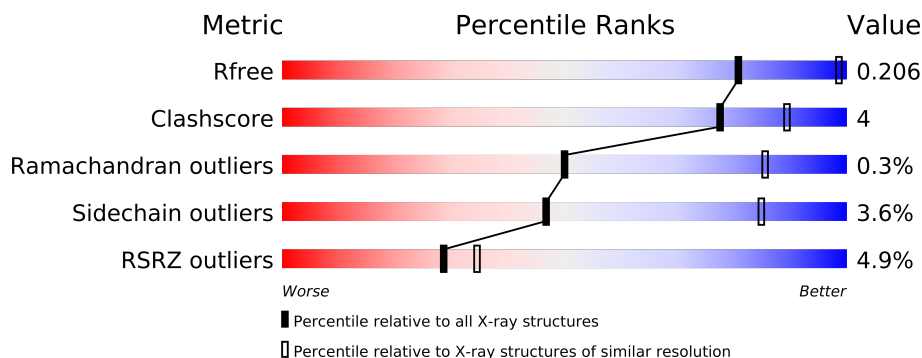
The following versions of software and data (see [references](#)) were used in the production of this report:

MolProbity : 4.02b-467
Mogul : 1.15 2013
Xtriage (Phenix) : dev-1323
EDS : stable22639
Percentile statistics : 21963
Refmac : 5.8.0049
CCP4 : 6.3.0 (Settle)
Ideal geometry (proteins) : Engh & Huber (2001)
Ideal geometry (DNA, RNA) : Parkinson et. al. (1996)
Validation Pipeline (wwPDB-VP) : stable22683

1 Overall quality at a glance

The reported resolution of this entry is 2.90 Å.

Percentile scores (ranging between 0-100) for global validation metrics of the entry are shown in the following graphic. The table shows the number of entries on which the scores are based.



Metric	Whole archive (#Entries)	Similar resolution (#Entries, resolution range(Å))
R_{free}	66092	1053 (2.90-2.90)
Clashscore	79885	1326 (2.90-2.90)
Ramachandran outliers	78287	1290 (2.90-2.90)
Sidechain outliers	78261	1292 (2.90-2.90)
RSRZ outliers	66119	1054 (2.90-2.90)

The table below summarises the geometric issues observed across the polymeric chains and their fit to the electron density. The red, orange, yellow and green segments on the lower bar indicate the fraction of residues that contain outliers for ≥ 3 , 2, 1 and 0 types of geometric quality criteria. The upper red bar (where present) indicates the fraction of residues that have poor fit to the electron density.

Mol	Chain	Length	Quality of chain
1	A	543	
1	B	543	

2 Entry composition

There are 5 unique types of molecules in this entry. The entry contains 7967 atoms, of which 0 are hydrogen and 0 are deuterium.

In the tables below, the ZeroOcc column contains the number of atoms modelled with zero occupancy, the AltConf column contains the number of residues with at least one atom in alternate conformation and the Trace column contains the number of residues modelled with at most 2 atoms.

- Molecule 1 is a protein called Rhodopsin kinase.

Mol	Chain	Residues	Atoms					ZeroOcc	AltConf	Trace
1	A	496	Total	C	N	O	S	0	2	0
			3995	2563	690	723	19			
1	B	475	Total	C	N	O	S	0	1	0
			3846	2468	664	695	19			

There are 16 discrepancies between the modelled and reference sequences:

Chain	Residue	Modelled	Actual	Comment	Reference
A	536	VAL	-	EXPRESSION TAG	UNP P28327
A	537	ASP	-	EXPRESSION TAG	UNP P28327
A	538	HIS	-	EXPRESSION TAG	UNP P28327
A	539	HIS	-	EXPRESSION TAG	UNP P28327
A	540	HIS	-	EXPRESSION TAG	UNP P28327
A	541	HIS	-	EXPRESSION TAG	UNP P28327
A	542	HIS	-	EXPRESSION TAG	UNP P28327
A	543	HIS	-	EXPRESSION TAG	UNP P28327
B	536	VAL	-	EXPRESSION TAG	UNP P28327
B	537	ASP	-	EXPRESSION TAG	UNP P28327
B	538	HIS	-	EXPRESSION TAG	UNP P28327
B	539	HIS	-	EXPRESSION TAG	UNP P28327
B	540	HIS	-	EXPRESSION TAG	UNP P28327
B	541	HIS	-	EXPRESSION TAG	UNP P28327
B	542	HIS	-	EXPRESSION TAG	UNP P28327
B	543	HIS	-	EXPRESSION TAG	UNP P28327

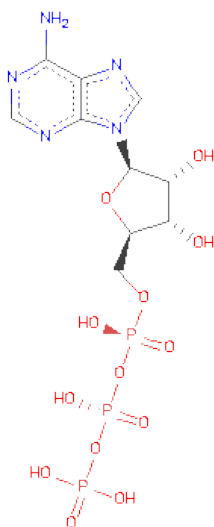
- Molecule 2 is MAGNESIUM ION (three-letter code: MG) (formula: Mg).

Mol	Chain	Residues	Atoms		ZeroOcc	AltConf
2	B	1	Total	Mg	0	0
			1	1		
2	A	1	Total	Mg	0	0
			1	1		

- Molecule 3 is CHLORIDE ION (three-letter code: CL) (formula: Cl).

Mol	Chain	Residues	Atoms		ZeroOcc	AltConf
3	A	2	Total	Cl	0	0
			2	2		

- Molecule 4 is ADENOSINE-5'-TRIPHOSPHATE (three-letter code: ATP) (formula: C₁₀H₁₆N₅O₁₃P₃).



Mol	Chain	Residues	Atoms					ZeroOcc	AltConf
4	A	1	Total	C	N	O	P	0	0
			31	10	5	13	3		
4	B	1	Total	C	N	O	P	0	0
			31	10	5	13	3		

- Molecule 5 is water.

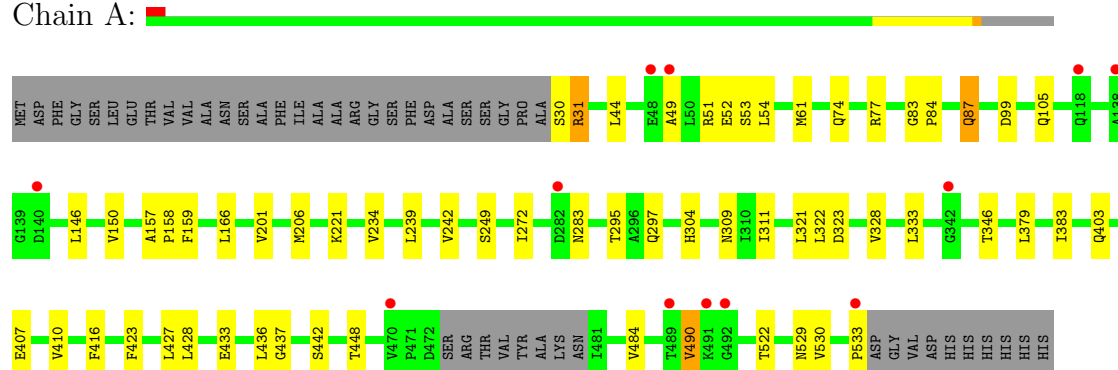
Mol	Chain	Residues	Atoms		ZeroOcc	AltConf
5	A	53	Total	O	0	0
			53	53		
5	B	7	Total	O	0	0
			7	7		

3 Residue-property plots

These plots are drawn for all protein, RNA and DNA chains in the entry. The first graphic for a chain summarises the proportions of errors displayed in the second graphic. The second graphic shows the sequence view annotated by issues in geometry and electron density. Residues are color-coded according to the number of geometric quality criteria for which they contain at least one outlier: green = 0, yellow = 1, orange = 2 and red = 3 or more. A red dot above a residue indicates a poor fit to the electron density ($RSRZ > 2$). Stretches of 2 or more consecutive residues without any outlier are shown as a green connector. Residues present in the sample, but not in the model, are shown in grey.

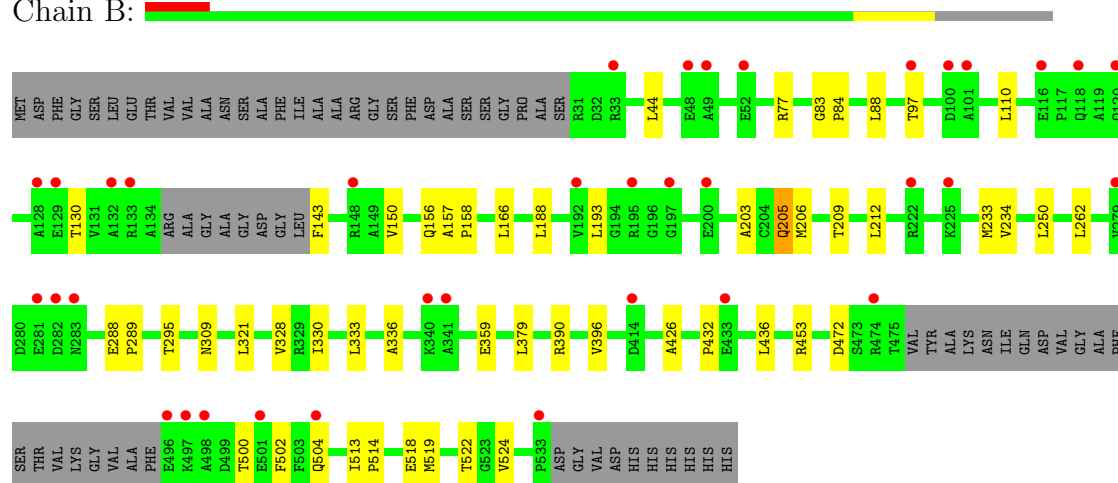
• Molecule 1: Rhodopsin kinase

Chain A:



• Molecule 1: Rhodopsin kinase

Chain B:



4 Data and refinement statistics

Property	Value	Source
Space group	P 21 21 21	Depositor
Cell constants a, b, c, α , β , γ	54.12Å 95.12Å 234.82Å 90.00° 90.00° 90.00°	Depositor
Resolution (Å)	19.75 – 2.90 19.75 – 2.90	Depositor EDS
% Data completeness (in resolution range)	96.0 (19.75-2.90) 96.0 (19.75-2.90)	Depositor EDS
R_{merge}	(Not available)	Depositor
R_{sym}	(Not available)	Depositor
$\langle I/\sigma(I) \rangle$ ¹	3.26 (at 2.88Å)	Xtriage
Refinement program	REFMAC 5.2.0019	Depositor
R, R_{free}	0.193 , (Not available) 0.196 , 0.206	Depositor DCC
R_{free} test set	1336 reflections (5.30%)	DCC
Wilson B-factor (Å ²)	51.2	Xtriage
Anisotropy	0.073	Xtriage
Bulk solvent k_{sol} (e/Å ³), B_{sol} (Å ²)	0.34 , 47.0	EDS
Estimated twinning fraction	No twinning to report.	Xtriage
L-test for twinning	$\langle L \rangle = 0.48$, $\langle L^2 \rangle = 0.31$	Xtriage
Outliers	0 of 26552 reflections	Xtriage
F_o, F_c correlation	0.93	EDS
Total number of atoms	7967	wwPDB-VP
Average B, all atoms (Å ²)	49.0	wwPDB-VP

Xtriage's analysis on translational NCS is as follows: *The largest off-origin peak in the Patterson function is 4.08% of the height of the origin peak. No significant pseudotranslation is detected.*

¹Intensities estimated from amplitudes.

5 Model quality

5.1 Standard geometry

Bond lengths and bond angles in the following residue types are not validated in this section: MG, ATP, CL

The Z score for a bond length (or angle) is the number of standard deviations the observed value is removed from the expected value. A bond length (or angle) with $|Z| > 5$ is considered an outlier worth inspection. RMSZ is the root-mean-square of all Z scores of the bond lengths (or angles).

Mol	Chain	Bond lengths		Bond angles	
		RMSZ	$\# Z > 5$	RMSZ	$\# Z > 5$
1	A	0.54	0/4091	0.65	0/5519
1	B	0.45	0/3938	0.56	0/5311
All	All	0.49	0/8029	0.61	0/10830

There are no bond length outliers.

There are no bond angle outliers.

There are no chirality outliers.

There are no planarity outliers.

5.2 Close contacts

In the following table, the Non-H and H(model) columns list the number of non-hydrogen atoms and hydrogen atoms in the chain respectively. The H(added) column lists the number of hydrogens added by MolProbity. The Clashes column lists the number of clashes within the asymmetric unit, and the number in parentheses is this value normalized per 1000 atoms of the molecule in the chain. The Symm-Clashes column gives symmetry related clashes, in the same way as for the Clashes column.

Mol	Chain	Non-H	H(model)	H(added)	Clashes	Symm-Clashes
1	A	3995	0	3952	34	0
1	B	3846	0	3809	26	0
2	A	1	0	0	0	0
2	B	1	0	0	0	0
3	A	2	0	0	0	0
4	A	31	0	12	1	0
4	B	31	0	12	0	0
5	A	53	0	0	1	0
5	B	7	0	0	0	0
All	All	7967	0	7785	58	0

Clashscore is defined as the number of clashes calculated for the entry per 1000 atoms (including hydrogens) of the entry. The overall clashscore for this entry is 4.

All (58) close contacts within the same asymmetric unit are listed below.

Atom-1	Atom-2	Distance(Å)	Clash(Å)
1:A:49:ALA:HB3	5:A:574:HOH:O	1.80	0.80
1:B:518:GLU:O	1:B:522:THR:HG22	1.82	0.80
1:B:88:LEU:HD23	1:B:150:VAL:HG21	1.65	0.79
1:A:87:GLN:HE21	1:A:87:GLN:HA	1.59	0.67
1:B:88:LEU:HD23	1:B:150:VAL:CG2	2.25	0.66
1:A:410:VAL:HG21	1:A:428:LEU:HD13	1.78	0.64
1:B:88:LEU:CD2	1:B:150:VAL:HG21	2.30	0.60
1:A:44:LEU:HD11	1:B:166:LEU:HD23	1.85	0.58
1:B:426:ALA:HB1	1:B:436:LEU:HB2	1.87	0.56
1:A:61:MET:HE2	1:A:159:PHE:HE1	1.71	0.56
1:A:61:MET:HE2	1:A:159:PHE:CE1	2.41	0.56
1:B:233:MET:HE3	1:B:502:PHE:CE1	2.41	0.56
1:A:297:GLN:OE1	1:A:328:VAL:HG22	2.06	0.55
1:B:518:GLU:O	1:B:522:THR:CG2	2.54	0.55
1:A:403:GLN:NE2	1:A:407:GLU:OE2	2.39	0.55
1:B:513:ILE:HB	1:B:514:PRO:HD3	1.90	0.53
1:B:250:LEU:HD11	1:B:262:LEU:HD22	1.91	0.53
1:B:295:THR:OG1	1:B:379:LEU:HD13	2.09	0.52
1:A:52:GLU:O	1:A:54:LEU:N	2.42	0.52
1:A:530:VAL:HG21	1:A:533:PRO:HB3	1.92	0.52
1:B:522:THR:HG23	1:B:524:VAL:HG23	1.91	0.51
1:A:272:ILE:HD13	1:A:322:LEU:HD11	1.91	0.51
1:A:61:MET:CE	1:A:159:PHE:HE1	2.25	0.50
1:A:201:VAL:HG21	4:A:562:ATP:O4'	2.11	0.50
1:B:234:VAL:HG11	1:B:336:ALA:O	2.12	0.50
1:B:209:THR:HG21	1:B:519:MET:CE	2.42	0.50
1:B:110:LEU:HD22	1:B:143:PHE:HE2	1.77	0.50
1:B:359:GLU:HG2	1:B:432:PRO:HG3	1.94	0.49
1:B:321:LEU:O	1:B:328:VAL:HA	2.13	0.49
1:A:166:LEU:HD23	1:B:44:LEU:HD11	1.94	0.49
1:A:157:ALA:HB3	1:A:158:PRO:HD3	1.95	0.49
1:A:87:GLN:NE2	1:A:87:GLN:HA	2.25	0.48
1:A:239:LEU:HD21	1:A:333:LEU:HD12	1.95	0.48
1:B:97:THR:O	1:B:97:THR:HG22	2.14	0.47
1:A:61:MET:CE	1:A:159:PHE:CE1	2.99	0.46
1:B:250:LEU:CD1	1:B:262:LEU:HD22	2.45	0.46
1:A:423:PHE:CE2	1:A:427:LEU:HD11	2.51	0.46
1:B:157:ALA:HB3	1:B:158:PRO:HD3	1.98	0.46
1:B:288:GLU:HB3	1:B:289:PRO:HD3	1.98	0.45

Continued on next page...

Continued from previous page...

Atom-1	Atom-2	Distance(Å)	Clash(Å)
1:B:205:GLN:HB2	1:B:212:LEU:HD23	1.99	0.45
1:B:83:GLY:N	1:B:84:PRO:HD2	2.33	0.44
1:A:484:VAL:O	1:A:484:VAL:HG12	2.17	0.44
1:A:242:VAL:HG13	1:A:304[A]:HIS:CD2	2.52	0.44
1:A:323:ASP:OD1	1:A:323:ASP:C	2.56	0.43
1:A:221:LYS:HB2	1:A:490:VAL:HG21	2.00	0.43
1:A:321:LEU:O	1:A:328:VAL:HA	2.19	0.43
1:A:74:GLN:HE22	1:A:529:ASN:ND2	2.17	0.43
1:B:209:THR:HG21	1:B:519:MET:HE2	2.01	0.42
1:A:436:LEU:HD12	1:A:437:GLY:H	1.84	0.42
1:A:146:LEU:O	1:A:150:VAL:HG23	2.19	0.42
1:A:295:THR:OG1	1:A:379:LEU:HD13	2.20	0.42
1:A:383:ILE:HG21	1:A:416:PHE:CD1	2.55	0.41
1:A:311:ILE:HD12	1:A:346:THR:HG21	2.00	0.41
1:B:193:LEU:HD11	1:B:203:ALA:HB2	2.03	0.41
1:A:83:GLY:N	1:A:84:PRO:CD	2.84	0.40
1:A:272:ILE:CD1	1:A:322:LEU:HD11	2.51	0.40
1:A:484:VAL:O	1:A:484:VAL:CG1	2.69	0.40
1:A:30:SER:O	1:A:31:ARG:CB	2.69	0.40

There are no symmetry-related clashes.

5.3 Torsion angles

5.3.1 Protein backbone ⓘ

In the following table, the Percentiles column shows the percent Ramachandran outliers of the chain as a percentile score with respect to all X-ray entries followed by that with respect to entries of similar resolution. The Analysed column shows the number of residues for which the backbone conformation was analysed, and the total number of residues.

Mol	Chain	Analysed	Favoured	Allowed	Outliers	Percentiles	
1	A	494/543 (91%)	473 (96%)	19 (4%)	2 (0%)	43	82
1	B	470/543 (87%)	451 (96%)	18 (4%)	1 (0%)	56	89
All	All	964/1086 (89%)	924 (96%)	37 (4%)	3 (0%)	50	85

All (3) Ramachandran outliers are listed below:

Mol	Chain	Res	Type
1	A	31	ARG

Continued on next page...

Continued from previous page...

Mol	Chain	Res	Type
1	A	53	SER
1	B	156	GLN

5.3.2 Protein sidechains ⓘ

In the following table, the Percentiles column shows the percent sidechain outliers of the chain as a percentile score with respect to all X-ray entries followed by that with respect to entries of similar resolution. The Analysed column shows the number of residues for which the sidechain conformation was analysed, and the total number of residues.

Mol	Chain	Analysed	Rotameric	Outliers	Percentiles	
1	A	415/449 (92%)	400 (96%)	15 (4%)	47	85
1	B	402/449 (90%)	388 (96%)	14 (4%)	48	85
All	All	817/898 (91%)	788 (96%)	29 (4%)	47	85

All (29) residues with a non-rotameric sidechain are listed below:

Mol	Chain	Res	Type
1	A	51	ARG
1	A	77	ARG
1	A	87	GLN
1	A	99	ASP
1	A	105	GLN
1	A	206	MET
1	A	234	VAL
1	A	249	SER
1	A	283	ASN
1	A	309	ASN
1	A	433	GLU
1	A	442	SER
1	A	448	THR
1	A	490	VAL
1	A	522	THR
1	B	77	ARG
1	B	130	THR
1	B	188	LEU
1	B	205	GLN
1	B	206	MET
1	B	309	ASN
1	B	330	ILE
1	B	333	LEU

Continued on next page...

Continued from previous page...

Mol	Chain	Res	Type
1	B	390	ARG
1	B	396	VAL
1	B	453	ARG
1	B	472	ASP
1	B	500	THR
1	B	504	GLN

Some sidechains can be flipped to improve hydrogen bonding and reduce clashes. All (13) such sidechains are listed below:

Mol	Chain	Res	Type
1	A	74	GLN
1	A	87	GLN
1	A	105	GLN
1	A	118	GLN
1	A	459	GLN
1	B	87	GLN
1	B	144	GLN
1	B	205	GLN
1	B	219	ASN
1	B	268	ASN
1	B	309	ASN
1	B	343	GLN
1	B	529	ASN

5.3.3 RNA ⓘ

There are no RNA chains in this entry.

5.4 Non-standard residues in protein, DNA, RNA chains ⓘ

There are no non-standard protein/DNA/RNA residues in this entry.

5.5 Carbohydrates ⓘ

There are no carbohydrates in this entry.

5.6 Ligand geometry ⓘ

Of 6 ligands modelled in this entry, 4 are monoatomic - leaving 2 for Mogul analysis.

In the following table, the Counts columns list the number of bonds (or angles) for which Mogul statistics could be retrieved, the number of bonds (or angles) that are observed in the model and the number of bonds (or angles) that are defined in the chemical component dictionary. The Link column lists molecule types, if any, to which the group is linked. The Z score for a bond length (or angle) is the number of standard deviations the observed value is removed from the expected value. A bond length (or angle) with $|Z| > 2$ is considered an outlier worth inspection. RMSZ is the root-mean-square of all Z scores of the bond lengths (or angles).

Mol	Type	Chain	Res	Link	Bond lengths			Bond angles		
					Counts	RMSZ	$\# Z > 2$	Counts	RMSZ	$\# Z > 2$
4	ATP	A	562	2	33,33,33	1.19	2 (6%)	52,52,52	2.09	8 (15%)
4	ATP	B	562	2	33,33,33	1.00	2 (6%)	52,52,52	2.13	11 (21%)

In the following table, the Chirals column lists the number of chiral outliers, the number of chiral centers analysed, the number of these observed in the model and the number defined in the chemical component dictionary. Similar counts are reported in the Torsion and Rings columns. '-' means no outliers of that kind were identified.

Mol	Type	Chain	Res	Link	Chirals	Torsions	Rings
4	ATP	A	562	2	-	0/22/38/38	0/1/3/3
4	ATP	B	562	2	-	0/22/38/38	0/1/3/3

All (4) bond length outliers are listed below:

Mol	Chain	Res	Type	Atoms	Z	Observed(Å)	Ideal(Å)
4	A	562	ATP	C4-N9	-3.61	1.32	1.37
4	B	562	ATP	C4-N9	-3.16	1.33	1.37
4	B	562	ATP	C5-C4	2.67	1.46	1.40
4	A	562	ATP	C5-C4	2.63	1.46	1.40

All (19) bond angle outliers are listed below:

Mol	Chain	Res	Type	Atoms	Z	Observed(°)	Ideal(°)
4	B	562	ATP	N3-C2-N1	-7.38	122.53	128.71
4	A	562	ATP	O4'-C1'-N9	-7.27	101.68	108.44
4	A	562	ATP	N3-C2-N1	-6.87	122.96	128.71
4	B	562	ATP	O4'-C1'-N9	5.93	113.95	108.44
4	A	562	ATP	N3-C4-N9	5.87	136.03	125.43
4	B	562	ATP	N3-C4-N9	5.06	134.57	125.43
4	B	562	ATP	PB-O3B-PG	-4.53	118.41	131.68
4	B	562	ATP	PA-O3A-PB	-4.48	118.55	131.68
4	A	562	ATP	C8-N9-C4	4.39	110.25	106.90
4	B	562	ATP	C4-C5-N7	-3.24	106.75	109.52
4	A	562	ATP	PB-O3B-PG	-3.22	122.23	131.68

Continued on next page...

Continued from previous page...

Mol	Chain	Res	Type	Atoms	Z	Observed(°)	Ideal(°)
4	B	562	ATP	C8-N9-C4	3.11	109.27	106.90
4	A	562	ATP	C5-C4-N3	-2.98	119.21	125.70
4	B	562	ATP	C5-C4-N3	-2.89	119.40	125.70
4	B	562	ATP	C2-N3-C4	2.63	121.48	114.01
4	B	562	ATP	C2'-C1'-N9	-2.45	106.98	113.27
4	A	562	ATP	C2-N3-C4	2.42	120.91	114.01
4	B	562	ATP	C1'-N9-C4	-2.42	122.45	126.64
4	A	562	ATP	N6-C6-N1	2.10	123.49	119.36

There are no chirality outliers.

There are no torsion outliers.

There are no ring outliers.

5.7 Other polymers ⓘ

There are no such residues in this entry.

5.8 Polymer linkage issues

There are no chain breaks in this entry.

6 Fit of model and data ⓘ

6.1 Protein, DNA and RNA chains ⓘ

In the following table, the column labelled ‘#RSRZ> 2’ contains the number (and percentage) of RSRZ outliers, followed by percent RSRZ outliers for the chain as percentile scores relative to all X-ray entries and entries of similar resolution. The OWAB column contains the minimum, median, 95th percentile and maximum values of the occupancy-weighted average B-factor per residue. The column labelled ‘Q< 0.9’ lists the number of (and percentage) of residues with an average occupancy less than 0.9.

Mol	Chain	Analysed	<RSRZ>	#RSRZ>2	OWAB(Å ²)	Q<0.9
1	A	496/543 (91%)	-0.09	12 (2%) 56 65	32, 46, 69, 81	0
1	B	475/543 (87%)	0.14	36 (7%) 14 17	32, 47, 66, 75	0
All	All	971/1086 (89%)	0.02	48 (4%) 28 34	32, 46, 67, 81	0

All (48) RSRZ outliers are listed below:

Mol	Chain	Res	Type	RSRZ
1	B	282	ASP	4.5
1	B	341	ALA	4.3
1	B	533	PRO	3.6
1	B	132	ALA	3.4
1	B	497	LYS	3.4
1	A	489	THR	3.3
1	B	120	GLN	3.3
1	B	197	GLY	3.2
1	B	498	ALA	3.2
1	A	140	ASP	3.1
1	B	133	ARG	3.1
1	A	118	GLN	3.0
1	B	200	GLU	3.0
1	B	128	ALA	2.9
1	B	501	GLU	2.9
1	B	100	ASP	2.9
1	B	195	ARG	2.9
1	B	474	ARG	2.7
1	B	414	ASP	2.7
1	B	504	GLN	2.7
1	B	340	LYS	2.6
1	B	225	LYS	2.6
1	A	533	PRO	2.6
1	B	281	GLU	2.6

Continued on next page...

Continued from previous page...

Mol	Chain	Res	Type	RSRZ
1	B	33	ARG	2.6
1	B	48	GLU	2.5
1	A	470	VAL	2.5
1	B	49	ALA	2.5
1	A	48	GLU	2.5
1	B	279	VAL	2.4
1	B	129	GLU	2.4
1	B	283	ASN	2.4
1	B	192	VAL	2.4
1	A	282	ASP	2.4
1	B	116	GLU	2.4
1	A	49	ALA	2.3
1	A	138	ALA	2.3
1	B	52	GLU	2.3
1	B	148	ARG	2.2
1	B	222	ARG	2.2
1	A	492	GLY	2.2
1	B	101	ALA	2.1
1	B	118	GLN	2.1
1	A	342	GLY	2.1
1	B	496	GLU	2.1
1	B	97	THR	2.0
1	B	433	GLU	2.0
1	A	491	LYS	2.0

6.2 Non-standard residues in protein, DNA, RNA chains ⓘ

There are no non-standard protein/DNA/RNA residues in this entry.

6.3 Carbohydrates ⓘ

There are no carbohydrates in this entry.

6.4 Ligands ⓘ

In the following table, the Atoms column lists the number of modelled atoms in the group and the number defined in the chemical component dictionary. LLDF column lists the quality of electron density of the group with respect to its neighbouring residues in protein, DNA or RNA chains. The B-factors column lists the minimum, median, 95th percentile and maximum values of B factors of atoms in the group. The column labelled 'Q < 0.9' lists the number of atoms with occupancy less than 0.9.

Mol	Type	Chain	Res	Atoms	RSR	LLDF	B-factors(\AA^2)	Q<0.9
4	ATP	A	562	31/31	0.20	1.90	32,40,43,45	0
2	MG	B	563	1/1	0.14	-0.28	58,58,58,58	0
4	ATP	B	562	31/31	0.14	-0.78	50,52,60,61	0
2	MG	A	564	1/1	0.12	-0.81	19,19,19,19	0
3	CL	A	565	1/1	0.10	-1.75	55,55,55,55	0
3	CL	A	566	1/1	0.07	-3.44	41,41,41,41	0

6.5 Other polymers ⓘ

There are no such residues in this entry.