



Full wwPDB X-ray Structure Validation Report

Feb 26, 2014 – 10:14 PM GMT

PDB ID : 3C5D
Title : Crystal structure of HIV-1 subtype F DIS extended duplex RNA bound to lividomycin
Authors : Freisz, S.; Lang, K.; Micura, R.; Dumas, P.; Ennifar, E.
Deposited on : 2008-01-31
Resolution : 1.80 Å(reported)

This is a full wwPDB validation report for a publicly released PDB entry.
We welcome your comments at validation@mail.wwpdb.org
A user guide is available at <http://wwpdb.org/ValidationPDFNotes.html>

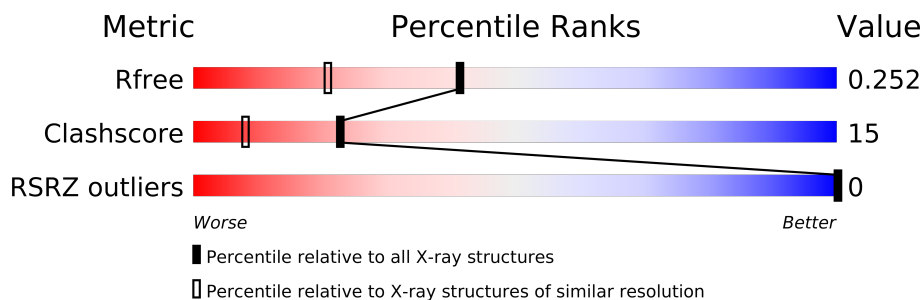
The following versions of software and data (see [references](#)) were used in the production of this report:

MolProbity : 4.02b-467
Mogul : 1.15 2013
Xtriage (Phenix) : dev-1323
EDS : stable22639
Percentile statistics : 21963
Refmac : 5.8.0049
CCP4 : 6.3.0 (Settle)
Ideal geometry (proteins) : Engh & Huber (2001)
Ideal geometry (DNA, RNA) : Parkinson et. al. (1996)
Validation Pipeline (wwPDB-VP) : stable22683

1 Overall quality at a glance

The reported resolution of this entry is 1.80 Å.

Percentile scores (ranging between 0-100) for global validation metrics of the entry are shown in the following graphic. The table shows the number of entries on which the scores are based.



Metric	Whole archive (#Entries)	Similar resolution (#Entries, resolution range(Å))
R_{free}	66092	3513 (1.80-1.80)
Clashscore	79885	4461 (1.80-1.80)
RSRZ outliers	66119	3515 (1.80-1.80)

The table below summarises the geometric issues observed across the polymeric chains and their fit to the electron density. The red, orange, yellow and green segments on the lower bar indicate the fraction of residues that contain outliers for ≥ 3 , 2, 1 and 0 types of geometric quality criteria. The upper red bar (where present) indicates the fraction of residues that have poor fit to the electron density.

Mol	Chain	Length	Quality of chain
1	A	23	
1	B	23	

The following table lists non-polymeric compounds that are outliers for geometric or electron-density-fit criteria:

Mol	Type	Chain	Res	Geometry	Electron density
2	LIV	B	24	-	X
2	LIV	B	25	-	X
3	K	A	24	-	X

2 Entry composition i

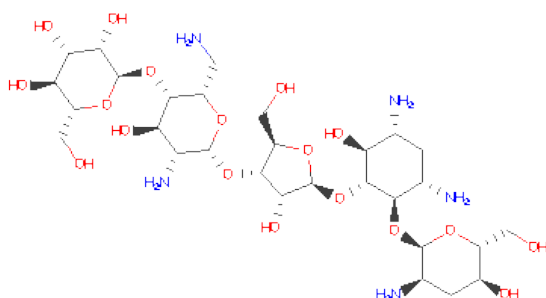
There are 4 unique types of molecules in this entry. The entry contains 1226 atoms, of which 0 are hydrogen and 0 are deuterium.

In the tables below, the ZeroOcc column contains the number of atoms modelled with zero occupancy, the AltConf column contains the number of residues with at least one atom in alternate conformation and the Trace column contains the number of residues modelled with at most 2 atoms.

- Molecule 1 is DNA/RNA hybrid called 'HIV-1 subtype F genomic RNA.

Mol	Chain	Residues	Atoms						ZeroOcc	AltConf	Trace
1	A	23	Total	C	N	O	P	Se	0	0	0
			490	221	91	155	22	1			
1	B	23	Total	C	N	O	P	Se	0	0	0
			490	221	91	155	22	1			

- Molecule 2 is (2R,3S,4S,5S,6R)-2-((2S,3S,4R,5R,6R)-5-AMINO-2-(AMINOMETHYL)-6-((2R,3S,4R,5S)-5-((1R,2R,3S,5R,6S)-3,5-DIAMINO-2-((2S,3R,5S,6R)-3-AMINO-5-HYDROXY-6-(HYDROXYMETHYL)-TETRAHYDRO-2H-PYRAN-2-YLOXY)-6-HYDROXYCYCLOHEXYLOXY)-4-HYDROXY-2-(HYDROXYMETHYL)-TETRAHYDROFURAN-3-YLOXY)-4-HYDROXY-TETRAHYDRO-2H-PYRAN-3-YLOXY)-6-(HYDROXYMETHYL)-TETRAHYDRO-2H-PYRAN-3,4,5-TRIOL (three-letter code: LIV) (formula: C₂₉H₅₅N₅O₁₈).



Mol	Chain	Residues	Atoms				ZeroOcc	AltConf
2	B	1	Total	C	N	O	0	0
			52	29	5	18		

Continued on next page...

Continued from previous page...

Mol	Chain	Residues	Atoms				ZeroOcc	AltConf
2	B	1	Total	C	N	O	0	0
			52	29	5	18		

- Molecule 3 is POTASSIUM ION (three-letter code: K) (formula: K).

Mol	Chain	Residues	Atoms		ZeroOcc	AltConf
3	B	1	Total	K	0	0
			1	1		
3	A	1	Total	K	0	0
			1	1		

- Molecule 4 is water.

Mol	Chain	Residues	Atoms		ZeroOcc	AltConf
4	A	53	Total	O	0	0
			53	53		
4	B	87	Total	O	0	0
			87	87		

3 Residue-property plots

These plots are drawn for all protein, RNA and DNA chains in the entry. The first graphic for a chain summarises the proportions of errors displayed in the second graphic. The second graphic shows the sequence view annotated by issues in geometry and electron density. Residues are color-coded according to the number of geometric quality criteria for which they contain at least one outlier: green = 0, yellow = 1, orange = 2 and red = 3 or more. A red dot above a residue indicates a poor fit to the electron density ($RSRZ > 2$). Stretches of 2 or more consecutive residues without any outlier are shown as a green connector. Residues present in the sample, but not in the model, are shown in grey.

- Molecule 1: 'HIV-1 subtype F genomic RNA

Chain A: 



- Molecule 1: 'HIV-1 subtype F genomic RNA

Chain B: 



4 Data and refinement statistics

Property	Value	Source
Space group	C 1 2 1	Depositor
Cell constants a, b, c, α , β , γ	100.09Å 29.29Å 59.61Å 90.00° 120.84° 90.00°	Depositor
Resolution (Å)	19.95 – 1.80 19.95 – 1.79	Depositor EDS
% Data completeness (in resolution range)	89.8 (19.95-1.80) 89.8 (19.95-1.79)	Depositor EDS
R_{merge}	(Not available)	Depositor
R_{sym}	0.04	Depositor
$\langle I/\sigma(I) \rangle$ ¹	4.07 (at 1.80Å)	Xtriage
Refinement program	CNS 1.1	Depositor
R, R_{free}	0.232 , 0.245 0.246 , 0.252	Depositor DCC
R_{free} test set	943 reflections (7.99%)	DCC
Wilson B-factor (Å ²)	39.8	Xtriage
Anisotropy	0.510	Xtriage
Bulk solvent k_{sol} (e/Å ³), B_{sol} (Å ²)	0.38 , 48.3	EDS
Estimated twinning fraction	No twinning to report.	Xtriage
L-test for twinning	$\langle L \rangle = 0.51$, $\langle L^2 \rangle = 0.34$	Xtriage
Outliers	1 of 24282 reflections (0.004%)	Xtriage
F_o, F_c correlation	0.96	EDS
Total number of atoms	1226	wwPDB-VP
Average B, all atoms (Å ²)	47.0	wwPDB-VP

Xtriage's analysis on translational NCS is as follows: *The largest off-origin peak in the Patterson function is 10.29% of the height of the origin peak. No significant pseudotranslation is detected.*

¹Intensities estimated from amplitudes.

5 Model quality

5.1 Standard geometry

Bond lengths and bond angles in the following residue types are not validated in this section: LIV, K, UMS

The Z score for a bond length (or angle) is the number of standard deviations the observed value is removed from the expected value. A bond length (or angle) with $|Z| > 5$ is considered an outlier worth inspection. RMSZ is the root-mean-square of all Z scores of the bond lengths (or angles).

Mol	Chain	Bond lengths		Bond angles	
		RMSZ	$\# Z > 5$	RMSZ	$\# Z > 5$
1	A	0.38	0/525	0.74	1/817 (0.1%)
1	B	0.40	0/525	0.73	1/817 (0.1%)
All	All	0.39	0/1050	0.73	2/1634 (0.1%)

There are no bond length outliers.

All (2) bond angle outliers are listed below:

Mol	Chain	Res	Type	Atoms	Z	Observed(°)	Ideal(°)
1	A	3	UMS	P-O3'-C3'	6.99	128.09	119.70
1	B	3	UMS	P-O3'-C3'	6.18	127.12	119.70

There are no chirality outliers.

There are no planarity outliers.

5.2 Close contacts

In the following table, the Non-H and H(model) columns list the number of non-hydrogen atoms and hydrogen atoms in the chain respectively. The H(added) column lists the number of hydrogens added by MolProbity. The Clashes column lists the number of clashes within the asymmetric unit, and the number in parentheses is this value normalized per 1000 atoms of the molecule in the chain. The Symm-Clashes column gives symmetry related clashes, in the same way as for the Clashes column.

Mol	Chain	Non-H	H(model)	H(added)	Clashes	Symm-Clashes
1	A	490	0	252	5	0
1	B	490	0	253	9	0
2	B	104	0	110	11	0
3	A	1	0	0	0	0
3	B	1	0	0	0	0

Continued on next page...

Continued from previous page...

Mol	Chain	Non-H	H(model)	H(added)	Clashes	Symm-Clashes
4	A	53	0	0	2	0
4	B	87	0	0	5	0
All	All	1226	0	615	25	0

Clashscore is defined as the number of clashes calculated for the entry per 1000 atoms (including hydrogens) of the entry. The overall clashscore for this entry is 15.

All (25) close contacts within the same asymmetric unit are listed below.

Atom-1	Atom-2	Distance(Å)	Clash(Å)
2:B:24:LIV:O44	2:B:24:LIV:C15	1.66	1.43
2:B:25:LIV:O44	2:B:25:LIV:C15	1.67	1.39
1:B:3:UMS:CA'	1:B:4:G:H5'	1.63	1.29
1:A:3:UMS:CA'	1:A:4:G:H5'	1.72	1.20
1:A:3:UMS:HA'3	1:A:4:G:H5'	1.16	1.15
1:B:3:UMS:HA'3	1:B:4:G:H5'	1.24	1.06
1:B:3:UMS:HA'2	1:B:4:G:H5'	1.43	0.99
1:B:3:UMS:HA'3	1:B:4:G:C5'	2.00	0.91
1:A:3:UMS:HA'3	1:A:4:G:C5'	2.05	0.84
1:A:3:UMS:H3'	4:A:70:HOH:O	1.82	0.79
2:B:24:LIV:C25	2:B:24:LIV:O44	2.33	0.76
1:B:3:UMS:H4'	4:B:106:HOH:O	1.86	0.75
2:B:25:LIV:O44	2:B:25:LIV:C25	2.35	0.74
2:B:25:LIV:C44	2:B:25:LIV:C15	2.68	0.72
1:A:3:UMS:HA'2	1:A:4:G:H5'	1.68	0.70
2:B:24:LIV:C44	2:B:24:LIV:C15	2.70	0.69
2:B:24:LIV:H651	4:B:105:HOH:O	2.03	0.59
1:B:3:UMS:HA'3	1:B:4:G:C4'	2.34	0.58
2:B:25:LIV:H25	2:B:25:LIV:O44	2.11	0.50
1:B:3:UMS:HA'2	4:B:48:HOH:O	2.13	0.48
2:B:25:LIV:H15	4:B:111:HOH:O	2.14	0.47
4:A:73:HOH:O	2:B:24:LIV:H24	2.15	0.47
2:B:24:LIV:O44	2:B:24:LIV:H25	2.14	0.47
1:B:9:A:H5''	4:B:62:HOH:O	2.15	0.46
1:B:13:C:H2'	1:B:14:A:O4'	2.20	0.42

There are no symmetry-related clashes.

5.3 Torsion angles

5.3.1 Protein backbone ⓘ

There are no protein chains in this entry.

5.3.2 Protein sidechains ⓘ

There are no protein chains in this entry.

5.3.3 RNA ⓘ

There are no RNA chains in this entry.

5.4 Non-standard residues in protein, DNA, RNA chains ⓘ

2 non-standard protein/DNA/RNA residues are modelled in this entry.

In the following table, the Counts columns list the number of bonds (or angles) for which Mogul statistics could be retrieved, the number of bonds (or angles) that are observed in the model and the number of bonds (or angles) that are defined in the chemical component dictionary. The Link column lists molecule types, if any, to which the group is linked. The Z score for a bond length (or angle) is the number of standard deviations the observed value is removed from the expected value. A bond length (or angle) with $|Z| > 2$ is considered an outlier worth inspection. RMSZ is the root-mean-square of all Z scores of the bond lengths (or angles).

Mol	Type	Chain	Res	Link	Bond lengths			Bond angles		
					Counts	RMSZ	$\# Z > 2$	Counts	RMSZ	$\# Z > 2$
1	UMS	A	3	1,3	20,22,23	1.96	6 (30%)	24,31,34	1.40	5 (20%)
1	UMS	B	3	1,3	20,22,23	2.09	5 (25%)	24,31,34	1.57	2 (8%)

In the following table, the Chirals column lists the number of chiral outliers, the number of chiral centers analysed, the number of these observed in the model and the number defined in the chemical component dictionary. Similar counts are reported in the Torsion and Rings columns. '-' means no outliers of that kind were identified.

Mol	Type	Chain	Res	Link	Chirals	Torsions	Rings
1	UMS	A	3	1,3	-	0/6/27/28	0/2/2/2
1	UMS	B	3	1,3	-	0/6/27/28	0/2/2/2

All (11) bond length outliers are listed below:

Mol	Chain	Res	Type	Atoms	Z	Observed(Å)	Ideal(Å)
1	B	3	UMS	C5-C4	6.41	1.57	1.40
1	A	3	UMS	C5-C4	6.38	1.56	1.40
1	B	3	UMS	SE2'-C2'	3.71	2.07	1.98
1	B	3	UMS	C6-N1	2.67	1.40	1.35
1	A	3	UMS	C6-N1	2.64	1.40	1.35
1	B	3	UMS	P-OP1	2.49	1.49	1.46
1	A	3	UMS	SE2'-C2'	2.37	2.04	1.98
1	A	3	UMS	C2-N1	2.33	1.40	1.38
1	B	3	UMS	C2-N1	2.27	1.40	1.38
1	A	3	UMS	C2'-C3'	-2.12	1.50	1.53
1	A	3	UMS	P-OP1	2.11	1.49	1.46

All (7) bond angle outliers are listed below:

Mol	Chain	Res	Type	Atoms	Z	Observed(°)	Ideal(°)
1	B	3	UMS	O3'-C3'-C2'	5.60	120.48	111.33
1	A	3	UMS	C5'-C4'-C3'	2.87	126.70	115.21
1	A	3	UMS	SE2'-C2'-C3'	-2.56	103.86	111.80
1	A	3	UMS	C2-N1-C1'	-2.43	116.68	118.21
1	A	3	UMS	O3'-C3'-C2'	2.32	115.12	111.33
1	B	3	UMS	C6-N1-C2	2.02	122.33	119.51
1	A	3	UMS	C6-N1-C2	2.02	122.33	119.51

There are no chirality outliers.

There are no torsion outliers.

There are no ring outliers.

5.5 Carbohydrates

There are no carbohydrates in this entry.

5.6 Ligand geometry

Of 4 ligands modelled in this entry, 2 are monoatomic - leaving 2 for Mogul analysis.

In the following table, the Counts columns list the number of bonds (or angles) for which Mogul statistics could be retrieved, the number of bonds (or angles) that are observed in the model and the number of bonds (or angles) that are defined in the chemical component dictionary. The Link column lists molecule types, if any, to which the group is linked. The Z score for a bond length (or angle) is the number of standard deviations the observed value is removed from the expected value. A bond length (or angle) with $|Z| > 2$ is considered an outlier worth inspection. RMSZ is the root-mean-square of all Z scores of the bond lengths (or angles).

Mol	Type	Chain	Res	Link	Bond lengths			Bond angles		
					Counts	RMSZ	# Z > 2	Counts	RMSZ	# Z > 2
2	LIV	B	24	-	56,56,56	3.08	14 (25%)	83,83,83	1.66	11 (13%)
2	LIV	B	25	-	56,56,56	3.01	14 (25%)	83,83,83	1.66	12 (14%)

In the following table, the Chirals column lists the number of chiral outliers, the number of chiral centers analysed, the number of these observed in the model and the number defined in the chemical component dictionary. Similar counts are reported in the Torsion and Rings columns. '-' means no outliers of that kind were identified.

Mol	Type	Chain	Res	Link	Chirals	Torsions	Rings
2	LIV	B	24	-	-	0/24/116/116	0/5/5/5
2	LIV	B	25	-	-	0/24/116/116	0/5/5/5

All (28) bond length outliers are listed below:

Mol	Chain	Res	Type	Atoms	Z	Observed(Å)	Ideal(Å)
2	B	24	LIV	C22-C32	10.50	1.60	1.52
2	B	24	LIV	C22-C12	10.46	1.60	1.52
2	B	25	LIV	C22-C12	10.29	1.60	1.52
2	B	25	LIV	O44-C15	9.53	1.67	1.41
2	B	24	LIV	O44-C15	8.97	1.66	1.41
2	B	25	LIV	C22-C32	8.71	1.59	1.52
2	B	25	LIV	C31-C21	8.17	1.58	1.52
2	B	24	LIV	C31-C21	7.27	1.57	1.52
2	B	25	LIV	C34-C24	6.41	1.62	1.53
2	B	24	LIV	C34-C24	6.40	1.62	1.53
2	B	24	LIV	C14-C24	5.15	1.62	1.52
2	B	24	LIV	O54-C14	5.05	1.54	1.41
2	B	25	LIV	C14-C24	4.97	1.62	1.52
2	B	25	LIV	O54-C14	4.42	1.53	1.41
2	B	25	LIV	C31-C41	4.08	1.59	1.52
2	B	24	LIV	C34-C44	3.57	1.62	1.52
2	B	25	LIV	C34-C44	2.97	1.60	1.52
2	B	24	LIV	C31-C41	2.95	1.57	1.52
2	B	24	LIV	C41-C51	2.91	1.57	1.52
2	B	24	LIV	O55-C15	2.76	1.48	1.41
2	B	25	LIV	O55-C15	2.74	1.48	1.41
2	B	25	LIV	C41-C51	2.68	1.56	1.52
2	B	25	LIV	C62-C12	2.56	1.59	1.52
2	B	24	LIV	C11-C21	2.41	1.57	1.52
2	B	25	LIV	C42-C32	2.38	1.56	1.52
2	B	24	LIV	C62-C52	2.10	1.58	1.52
2	B	25	LIV	O51-C11	2.10	1.47	1.41

Continued on next page...

Continued from previous page...

Mol	Chain	Res	Type	Atoms	Z	Observed(Å)	Ideal(Å)
2	B	24	LIV	C62-C12	2.06	1.58	1.52

All (23) bond angle outliers are listed below:

Mol	Chain	Res	Type	Atoms	Z	Observed(°)	Ideal(°)
2	B	25	LIV	O54-C54-C44	7.29	124.93	109.70
2	B	24	LIV	O54-C54-C44	7.15	124.64	109.70
2	B	24	LIV	O44-C15-C25	-6.12	93.47	108.12
2	B	25	LIV	O44-C15-C25	-5.82	94.17	108.12
2	B	24	LIV	O44-C15-O55	3.79	120.14	110.69
2	B	25	LIV	O44-C15-O55	3.57	119.60	110.69
2	B	24	LIV	C15-O55-C55	3.57	120.66	113.73
2	B	25	LIV	C15-C25-C35	3.39	116.58	110.00
2	B	24	LIV	C65-C55-C45	3.38	121.16	113.00
2	B	25	LIV	C15-O55-C55	3.33	120.21	113.73
2	B	25	LIV	C65-C55-C45	3.06	120.39	113.00
2	B	24	LIV	C11-O11-C42	2.92	125.44	117.99
2	B	24	LIV	O55-C55-C45	2.85	115.03	109.76
2	B	25	LIV	O55-C55-C45	2.82	114.98	109.76
2	B	24	LIV	C15-C25-C35	2.74	115.32	110.00
2	B	25	LIV	C11-O11-C42	2.56	124.53	117.99
2	B	25	LIV	C34-C24-N24	2.42	115.69	110.91
2	B	24	LIV	C34-C24-N24	2.37	115.59	110.91
2	B	25	LIV	O33-C33-C43	-2.29	105.46	115.27
2	B	24	LIV	O11-C42-C52	2.18	113.01	107.41
2	B	25	LIV	O34-C34-C44	-2.09	104.97	109.85
2	B	25	LIV	C31-C41-C51	-2.04	108.39	110.96
2	B	24	LIV	O33-C33-C43	-2.02	106.65	115.27

There are no chirality outliers.

There are no torsion outliers.

There are no ring outliers.

5.7 Other polymers ⓘ

There are no such residues in this entry.

5.8 Polymer linkage issues

There are no chain breaks in this entry.

6 Fit of model and data ⓘ

6.1 Protein, DNA and RNA chains ⓘ

In the following table, the column labelled ‘#RSRZ> 2’ contains the number (and percentage) of RSRZ outliers, followed by percent RSRZ outliers for the chain as percentile scores relative to all X-ray entries and entries of similar resolution. The OWAB column contains the minimum, median, 95th percentile and maximum values of the occupancy-weighted average B-factor per residue. The column labelled ‘Q< 0.9’ lists the number of (and percentage) of residues with an average occupancy less than 0.9.

Mol	Chain	Analysed	<RSRZ>	#RSRZ>2	OWAB(Å ²)	Q<0.9
1	A	23/23 (100%)	-0.17	0 100 100	35, 44, 55, 56	0
1	B	23/23 (100%)	0.02	0 100 100	36, 45, 55, 63	0
All	All	46/46 (100%)	-0.08	0 100 100	35, 45, 55, 63	0

There are no RSRZ outliers to report.

6.2 Non-standard residues in protein, DNA, RNA chains ⓘ

In the following table, the Atoms column lists the number of modelled atoms in the group and the number defined in the chemical component dictionary. LLDF column lists the quality of electron density of the group with respect to its neighbouring residues in protein, DNA or RNA chains. The B-factors column lists the minimum, median, 95th percentile and maximum values of B factors of atoms in the group. The column labelled ‘Q< 0.9’ lists the number of atoms with occupancy less than 0.9.

Mol	Type	Chain	Res	Atoms	RSR	LLDF	B-factors(Å ²)	Q<0.9
1	UMS	A	3	21/22	0.13	2.40	50,55,59,60	0
1	UMS	B	3	21/22	0.14	2.10	28,38,41,45	0

6.3 Carbohydrates ⓘ

There are no carbohydrates in this entry.

6.4 Ligands ⓘ

In the following table, the Atoms column lists the number of modelled atoms in the group and the number defined in the chemical component dictionary. LLDF column lists the quality of electron density of the group with respect to its neighbouring residues in protein, DNA or RNA chains. The B-factors column lists the minimum, median, 95th percentile and maximum values of B factors

of atoms in the group. The column labelled 'Q < 0.9' lists the number of atoms with occupancy less than 0.9.

Mol	Type	Chain	Res	Atoms	RSR	LLDF	B-factors(\AA^2)	Q<0.9
2	LIV	B	24	52/52	0.20	4.72	30,41,67,70	0
2	LIV	B	25	52/52	0.19	4.33	26,37,68,71	0
3	K	A	24	1/1	0.13	2.17	88,88,88,88	0
3	K	B	26	1/1	0.09	-2.23	70,70,70,70	0

6.5 Other polymers ⓘ

There are no such residues in this entry.