



Full wwPDB X-ray Structure Validation Report

Feb 28, 2014 – 01:48 AM GMT

PDB ID : 2C6T
Title : CRYSTAL STRUCTURE OF THE HUMAN CDK2 COMPLEXED WITH
THE TRIAZOLOPYRIMIDINE INHIBITOR
Authors : Richardson, C.M.; Dokurno, P.; Murray, J.B.; Surgenor, A.E.
Deposited on : 2005-11-11
Resolution : 2.61 Å(reported)

This is a full wwPDB validation report for a publicly released PDB entry.
We welcome your comments at validation@mail.wwpdb.org
A user guide is available at <http://wwpdb.org/ValidationPDFNotes.html>

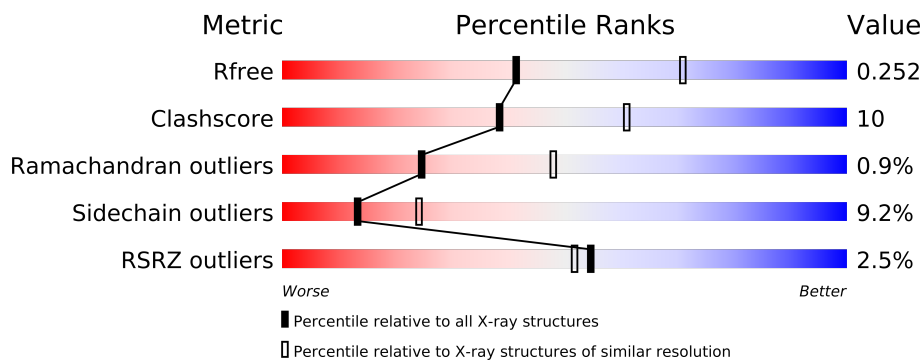
The following versions of software and data (see [references](#)) were used in the production of this report:

MolProbity : 4.02b-467
Mogul : 1.15 2013
Xtriage (Phenix) : dev-1323
EDS : stable22639
Percentile statistics : 21963
Refmac : 5.8.0049
CCP4 : 6.3.0 (Settle)
Ideal geometry (proteins) : Engh & Huber (2001)
Ideal geometry (DNA, RNA) : Parkinson et. al. (1996)
Validation Pipeline (wwPDB-VP) : stable22683

1 Overall quality at a glance

The reported resolution of this entry is 2.61 Å.

Percentile scores (ranging between 0-100) for global validation metrics of the entry are shown in the following graphic. The table shows the number of entries on which the scores are based.



Metric	Whole archive (#Entries)	Similar resolution (#Entries, resolution range(Å))
R_{free}	66092	1940 (2.64-2.60)
Clashscore	79885	2404 (2.64-2.60)
Ramachandran outliers	78287	2360 (2.64-2.60)
Sidechain outliers	78261	2360 (2.64-2.60)
RSRZ outliers	66119	1939 (2.64-2.60)

The table below summarises the geometric issues observed across the polymeric chains and their fit to the electron density. The red, orange, yellow and green segments on the lower bar indicate the fraction of residues that contain outliers for ≥ 3 , 2, 1 and 0 types of geometric quality criteria. The upper red bar (where present) indicates the fraction of residues that have poor fit to the electron density.

Mol	Chain	Length	Quality of chain
1	A	298	
1	C	298	
2	B	258	
2	D	258	

2 Entry composition i

There are 4 unique types of molecules in this entry. The entry contains 9341 atoms, of which 0 are hydrogen and 0 are deuterium.

In the tables below, the ZeroOcc column contains the number of atoms modelled with zero occupancy, the AltConf column contains the number of residues with at least one atom in alternate conformation and the Trace column contains the number of residues modelled with at most 2 atoms.

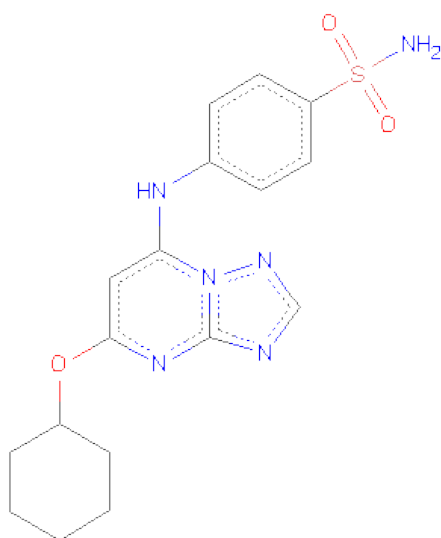
- Molecule 1 is a protein called CELL DIVISION PROTEIN KINASE 2.

Mol	Chain	Residues	Atoms						ZeroOcc	AltConf	Trace
1	A	296	Total	C	N	O	P	S	0	0	0
			2382	1547	403	423	1	8			
1	C	296	Total	C	N	O	P	S	0	0	0
			2382	1547	403	423	1	8			

- Molecule 2 is a protein called CYCLIN A2.

Mol	Chain	Residues	Atoms					ZeroOcc	AltConf	Trace
2	B	258	Total	C	N	O	S	0	0	0
			2083	1350	339	383	11			
2	D	258	Total	C	N	O	S	0	0	0
			2083	1350	339	383	11			

- Molecule 3 is 4-{{5-(CYCLOHEXYLOXY)[1,2,4]TRIAZOLO[1,5-A]PYRIMIDIN-7-YL}AMINO}BENZENESULFONAMIDE (three-letter code: DT5) (formula: C₁₇H₂₀N₆O₃S).



Mol	Chain	Residues	Atoms					ZeroOcc	AltConf
3	A	1	Total	C	N	O	S	0	0
			27	17	6	3	1		
3	C	1	Total	C	N	O	S	0	0
			27	17	6	3	1		

- Molecule 4 is water.

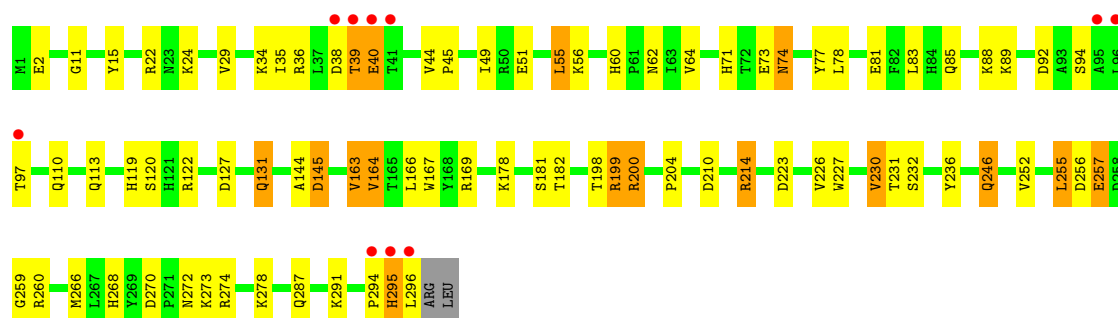
Mol	Chain	Residues	Atoms		ZeroOcc	AltConf
4	A	90	Total	O	0	0
			90	90		
4	B	98	Total	O	0	0
			98	98		
4	C	100	Total	O	0	0
			100	100		
4	D	69	Total	O	0	0
			69	69		

3 Residue-property plots

These plots are drawn for all protein, RNA and DNA chains in the entry. The first graphic for a chain summarises the proportions of errors displayed in the second graphic. The second graphic shows the sequence view annotated by issues in geometry and electron density. Residues are color-coded according to the number of geometric quality criteria for which they contain at least one outlier: green = 0, yellow = 1, orange = 2 and red = 3 or more. A red dot above a residue indicates a poor fit to the electron density ($RSRZ > 2$). Stretches of 2 or more consecutive residues without any outlier are shown as a green connector. Residues present in the sample, but not in the model, are shown in grey.

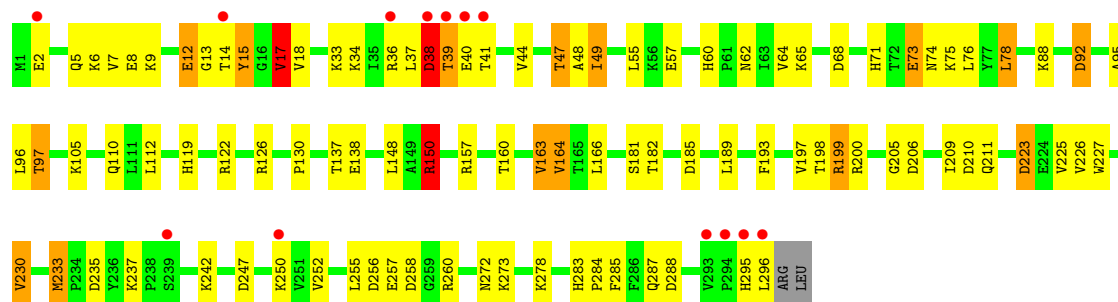
• Molecule 1: CELL DIVISION PROTEIN KINASE 2

Chain A: 



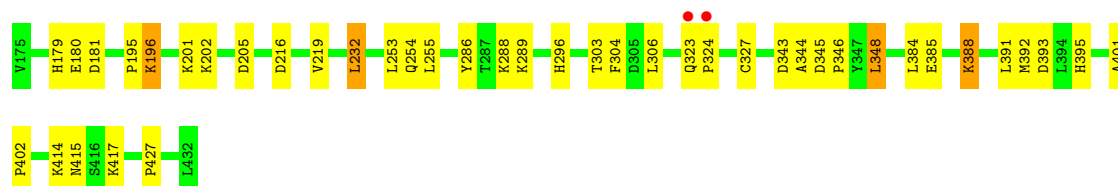
• Molecule 1: CELL DIVISION PROTEIN KINASE 2

Chain C: 



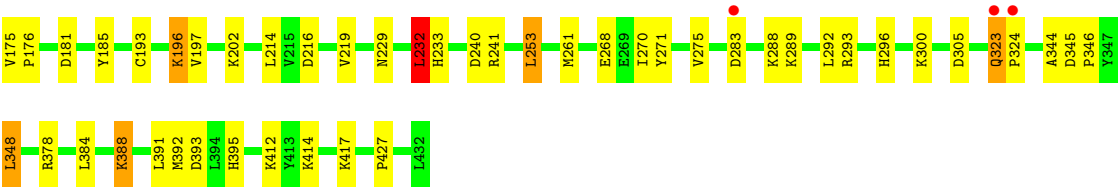
• Molecule 2: CYCLIN A2

Chain B: 



• Molecule 2: CYCLIN A2

Chain D: 



4 Data and refinement statistics

Property	Value	Source
Space group	P 21 21 2	Depositor
Cell constants a, b, c, α , β , γ	160.42Å 161.34Å 66.22Å 90.00° 90.00° 90.00°	Depositor
Resolution (Å)	15.00 – 2.61 14.97 – 2.61	Depositor EDS
% Data completeness (in resolution range)	94.7 (15.00-2.61) 94.7 (14.97-2.61)	Depositor EDS
R_{merge}	0.18	Depositor
R_{sym}	(Not available)	Depositor
$\langle I/\sigma(I) \rangle$ ¹	1.78 (at 2.61Å)	Xtriage
Refinement program	REFMAC 5.1.24	Depositor
R, R_{free}	0.200 , 0.257 0.200 , 0.252	Depositor DCC
R_{free} test set	2557 reflections (5.37%)	DCC
Wilson B-factor (Å ²)	21.0	Xtriage
Anisotropy	0.042	Xtriage
Bulk solvent k_{sol} (e/Å ³), B_{sol} (Å ²)	0.38 , 19.1	EDS
Estimated twinning fraction	0.015 for k,h,-l	Xtriage
L-test for twinning	$\langle L \rangle = 0.49$, $\langle L^2 \rangle = 0.32$	Xtriage
Outliers	0 of 50178 reflections	Xtriage
F_o, F_c correlation	0.91	EDS
Total number of atoms	9341	wwPDB-VP
Average B, all atoms (Å ²)	28.0	wwPDB-VP

Xtriage's analysis on translational NCS is as follows: *The largest off-origin peak in the Patterson function is 4.11% of the height of the origin peak. No significant pseudotranslation is detected.*

¹Intensities estimated from amplitudes.

5 Model quality

5.1 Standard geometry

Bond lengths and bond angles in the following residue types are not validated in this section: TPO, DT5

The Z score for a bond length (or angle) is the number of standard deviations the observed value is removed from the expected value. A bond length (or angle) with $|Z| > 5$ is considered an outlier worth inspection. RMSZ is the root-mean-square of all Z scores of the bond lengths (or angles).

Mol	Chain	Bond lengths		Bond angles	
		RMSZ	$\# Z > 5$	RMSZ	$\# Z > 5$
1	A	0.65	0/2432	0.84	7/3300 (0.2%)
1	C	0.66	0/2432	0.88	11/3300 (0.3%)
2	B	0.61	0/2133	0.78	5/2897 (0.2%)
2	D	0.61	0/2133	0.77	6/2897 (0.2%)
All	All	0.63	0/9130	0.82	29/12394 (0.2%)

There are no bond length outliers.

All (29) bond angle outliers are listed below:

Mol	Chain	Res	Type	Atoms	Z	Observed(°)	Ideal(°)
1	C	247	ASP	CB-CG-OD2	9.79	127.12	118.30
1	C	256	ASP	CB-CG-OD2	7.79	125.31	118.30
1	A	210	ASP	CB-CG-OD2	6.98	124.58	118.30
1	A	92	ASP	CB-CG-OD2	6.56	124.20	118.30
2	D	240	ASP	CB-CG-OD2	6.50	124.15	118.30
1	A	256	ASP	CB-CG-OD2	6.35	124.02	118.30
2	B	343	ASP	CB-CG-OD2	6.33	124.00	118.30
2	B	393	ASP	CB-CG-OD2	6.19	123.87	118.30
1	C	210	ASP	CB-CG-OD2	6.09	123.78	118.30
1	C	150	ARG	NE-CZ-NH2	-5.92	117.34	120.30
2	B	181	ASP	CB-CG-OD2	5.92	123.63	118.30
1	C	288	ASP	CB-CG-OD2	5.72	123.44	118.30
1	C	223	ASP	CB-CG-OD2	5.62	123.36	118.30
2	D	393	ASP	CB-CG-OD2	5.62	123.35	118.30
1	A	223	ASP	CB-CG-OD2	5.51	123.26	118.30
2	B	205	ASP	CB-CG-OD2	5.47	123.22	118.30
2	D	305	ASP	CB-CG-OD2	5.41	123.17	118.30
1	C	235	ASP	CB-CG-OD2	5.34	123.11	118.30
1	A	145	ASP	CB-CG-OD2	5.33	123.10	118.30
2	D	216	ASP	CB-CG-OD2	5.31	123.08	118.30

Continued on next page...

Continued from previous page...

Mol	Chain	Res	Type	Atoms	Z	Observed(°)	Ideal(°)
1	C	92	ASP	CB-CG-OD2	5.25	123.03	118.30
1	A	127	ASP	CB-CG-OD2	5.22	123.00	118.30
2	B	216	ASP	CB-CG-OD2	5.21	122.99	118.30
1	A	270	ASP	CB-CG-OD2	5.16	122.95	118.30
2	D	181	ASP	CB-CG-OD2	5.11	122.90	118.30
1	C	17	VAL	N-CA-C	5.11	124.79	111.00
2	D	232	LEU	CA-CB-CG	5.09	127.00	115.30
1	C	258	ASP	CB-CG-OD2	5.04	122.84	118.30
1	C	68	ASP	CB-CG-OD2	5.01	122.81	118.30

There are no chirality outliers.

There are no planarity outliers.

5.2 Close contacts ⓘ

In the following table, the Non-H and H(model) columns list the number of non-hydrogen atoms and hydrogen atoms in the chain respectively. The H(added) column lists the number of hydrogens added by MolProbity. The Clashes column lists the number of clashes within the asymmetric unit, and the number in parentheses is this value normalized per 1000 atoms of the molecule in the chain. The Symm-Clashes column gives symmetry related clashes, in the same way as for the Clashes column.

Mol	Chain	Non-H	H(model)	H(added)	Clashes	Symm-Clashes
1	A	2382	0	2425	56	0
1	C	2382	0	2425	69	0
2	B	2083	0	2107	28	0
2	D	2083	0	2107	33	0
3	A	27	0	20	4	0
3	C	27	0	20	4	0
4	A	90	0	0	17	0
4	B	98	0	0	11	0
4	C	100	0	0	14	0
4	D	69	0	0	15	0
All	All	9341	0	9104	176	0

Clashscore is defined as the number of clashes calculated for the entry per 1000 atoms (including hydrogens) of the entry. The overall clashscore for this entry is 10.

All (176) close contacts within the same asymmetric unit are listed below.

Atom-1	Atom-2	Distance(Å)	Clash(Å)
2:D:283:ASP:HB3	4:D:2036:HOH:O	1.48	1.09

Continued on next page...

Continued from previous page...

Atom-1	Atom-2	Distance(Å)	Clash(Å)
1:C:160:TPO:HG22	2:D:270:ILE:HG23	1.23	1.08
1:A:39:THR:HA	4:A:2016:HOH:O	1.54	1.07
1:C:92:ASP:HB3	4:C:2036:HOH:O	1.57	1.04
2:D:323:GLN:HA	4:D:2049:HOH:O	1.68	0.93
1:C:199:ARG:HB3	4:C:2039:HOH:O	1.76	0.85
1:A:260:ARG:HD3	4:A:2079:HOH:O	1.76	0.84
1:A:74:ASN:H	1:A:74:ASN:HD22	1.26	0.82
2:B:327:CYS:HB3	4:D:2006:HOH:O	1.81	0.81
1:C:60:HIS:HD2	1:C:62:ASN:H	1.29	0.79
2:B:179:HIS:HD2	4:B:2056:HOH:O	1.65	0.79
1:A:273:LYS:HE2	1:C:272:ASN:O	1.83	0.78
1:C:60:HIS:CD2	1:C:62:ASN:H	2.00	0.78
2:B:179:HIS:CD2	4:B:2056:HOH:O	2.36	0.78
2:D:324:PRO:HA	4:D:2049:HOH:O	1.85	0.76
1:A:232:SER:HB2	4:D:2057:HOH:O	1.84	0.76
1:A:49:ILE:HG23	2:B:306:LEU:HD12	1.68	0.76
2:B:180:GLU:HG2	4:C:2084:HOH:O	1.86	0.76
1:A:85:GLN:HE21	1:A:89:LYS:HD3	1.51	0.75
1:C:198:THR:O	1:C:199:ARG:HG3	1.86	0.74
1:A:60:HIS:HD2	1:A:62:ASN:H	1.36	0.74
1:A:22:ARG:HD3	4:A:2010:HOH:O	1.88	0.73
2:B:415:ASN:HB3	4:B:2094:HOH:O	1.87	0.72
1:C:227:TRP:O	1:C:230:VAL:HG22	1.90	0.72
1:C:12:GLU:HB2	4:C:2006:HOH:O	1.89	0.71
1:A:60:HIS:CD2	1:A:62:ASN:H	2.08	0.70
1:C:160:TPO:HG22	2:D:270:ILE:CG2	2.14	0.69
1:C:105:LYS:HE2	1:C:285:PHE:O	1.93	0.69
1:C:160:TPO:CG2	2:D:270:ILE:HG23	2.14	0.68
1:A:272:ASN:O	1:C:273:LYS:HE2	1.94	0.68
2:D:261:MET:HE1	4:D:2024:HOH:O	1.92	0.67
1:C:278:LYS:HE3	4:D:2013:HOH:O	1.94	0.67
1:A:231:THR:HA	1:A:236:TYR:CD1	2.31	0.65
1:A:110:GLN:HA	1:A:113:GLN:HE21	1.62	0.64
1:C:181:SER:OG	1:C:182:THR:N	2.29	0.64
1:C:198:THR:O	1:C:199:ARG:CG	2.45	0.64
1:A:268:HIS:HD2	4:A:2073:HOH:O	1.81	0.64
1:A:119:HIS:HD2	4:B:2007:HOH:O	1.80	0.63
4:A:2030:HOH:O	2:B:304:PHE:HE2	1.81	0.63
1:A:227:TRP:CE3	1:A:230:VAL:CG1	2.81	0.63
2:D:233:HIS:HD2	4:D:2044:HOH:O	1.82	0.62
2:D:175:VAL:N	4:D:2008:HOH:O	2.31	0.62
3:C:1297:DT5:H8	3:C:1297:DT5:C18	2.31	0.60

Continued on next page...

Continued from previous page...

Atom-1	Atom-2	Distance(Å)	Clash(Å)
1:C:150:ARG:NH2	2:D:268:GLU:O	2.29	0.60
2:D:219:VAL:HG22	2:D:232:LEU:HD11	1.84	0.59
1:C:160:TPO:O1P	2:D:270:ILE:HA	2.03	0.59
1:A:64:VAL:HB	4:A:2028:HOH:O	2.03	0.58
1:A:39:THR:O	4:A:2018:HOH:O	2.17	0.58
3:C:1297:DT5:C8	3:C:1297:DT5:C18	2.80	0.58
1:C:95:ALA:O	1:C:199:ARG:HG2	2.03	0.57
1:A:214:ARG:HG2	1:A:214:ARG:HH11	1.69	0.57
1:A:246:GLN:HG2	4:A:2078:HOH:O	2.04	0.56
1:C:205:GLY:HA3	1:C:211:GLN:OE1	2.04	0.56
3:C:1297:DT5:N1	3:C:1297:DT5:H6C2	2.20	0.56
1:C:41:THR:HA	2:D:288:LYS:NZ	2.21	0.56
1:C:97:THR:HB	4:C:2038:HOH:O	2.05	0.55
1:A:227:TRP:CD2	1:A:230:VAL:HG13	2.42	0.55
3:C:1297:DT5:C8	3:C:1297:DT5:H18	2.35	0.55
1:C:39:THR:HA	4:C:2018:HOH:O	2.07	0.55
2:D:229:ASN:OD1	2:D:412:LYS:NZ	2.39	0.55
1:C:193:PHE:O	1:C:197:VAL:HG23	2.07	0.55
2:B:385:GLU:OE2	4:B:2076:HOH:O	2.17	0.54
1:C:5:GLN:HE21	1:C:6:LYS:H	1.55	0.54
1:C:198:THR:O	1:C:199:ARG:HD2	2.08	0.54
1:C:44:VAL:HG12	1:C:49:ILE:HD12	1.89	0.53
1:C:283:HIS:ND1	1:C:284:PRO:HD2	2.23	0.53
1:C:40:GLU:C	2:D:288:LYS:HE2	2.30	0.53
1:C:223:ASP:OD1	1:C:225:VAL:HB	2.09	0.53
1:C:78:LEU:HD23	1:C:78:LEU:N	2.25	0.52
1:C:41:THR:HA	2:D:288:LYS:HZ3	1.74	0.52
2:D:288:LYS:NZ	4:D:2038:HOH:O	2.40	0.52
1:C:18:VAL:HG22	1:C:33:LYS:HG3	1.91	0.52
1:A:252:VAL:O	1:A:252:VAL:HG13	2.09	0.52
1:C:252:VAL:HG13	1:C:252:VAL:O	2.10	0.52
1:C:34:LYS:HD2	1:C:75:LYS:HE2	1.92	0.52
1:A:74:ASN:ND2	1:A:74:ASN:H	2.03	0.51
2:B:344:ALA:HB1	2:B:348:LEU:HD22	1.93	0.51
1:A:163:VAL:HG13	1:A:164:VAL:HG23	1.93	0.51
2:B:303:THR:HG22	4:B:2050:HOH:O	2.11	0.51
1:C:181:SER:HB3	4:C:2073:HOH:O	2.11	0.51
1:A:40:GLU:O	2:B:288:LYS:HE2	2.11	0.51
2:B:219:VAL:HG22	2:B:232:LEU:HD11	1.93	0.51
1:C:119:HIS:HD2	4:D:2010:HOH:O	1.94	0.51
1:C:62:ASN:ND2	1:C:110:GLN:HB3	2.27	0.50
2:D:214:LEU:HD22	2:D:253:LEU:HD22	1.94	0.50

Continued on next page...

Continued from previous page...

Atom-1	Atom-2	Distance(Å)	Clash(Å)
2:D:388:LYS:HD2	4:D:2060:HOH:O	2.12	0.50
2:B:395:HIS:HE1	2:B:427:PRO:O	1.95	0.49
1:C:15:TYR:N	1:C:15:TYR:CD2	2.79	0.49
1:A:200:ARG:HB3	4:A:2063:HOH:O	2.12	0.49
2:D:344:ALA:HB1	2:D:348:LEU:HD22	1.94	0.49
1:C:15:TYR:HA	4:C:2007:HOH:O	2.11	0.49
1:C:71:HIS:CD2	1:C:76:LEU:HD13	2.47	0.49
1:A:88:LYS:HG2	4:A:2032:HOH:O	2.11	0.49
1:A:39:THR:C	4:A:2018:HOH:O	2.51	0.49
1:C:112:LEU:HD23	1:C:189:LEU:HD12	1.93	0.49
2:B:324:PRO:HB3	4:B:2058:HOH:O	2.11	0.49
1:C:88:LYS:HB2	1:C:130:PRO:HB2	1.95	0.49
1:A:231:THR:HA	1:A:236:TYR:CE1	2.48	0.49
1:C:138:GLU:HG2	4:C:2049:HOH:O	2.13	0.48
3:A:1297:DT5:C18	3:A:1297:DT5:C8	2.90	0.48
3:A:1297:DT5:C18	3:A:1297:DT5:H8	2.44	0.48
1:C:163:VAL:CG2	4:C:2054:HOH:O	2.60	0.48
2:B:324:PRO:CB	4:B:2058:HOH:O	2.61	0.47
1:C:14:THR:HG1	1:C:15:TYR:HD2	1.62	0.47
1:A:15:TYR:HE1	1:A:35:ILE:CD1	2.28	0.47
1:A:294:PRO:C	1:A:296:LEU:H	2.18	0.47
1:A:167:TRP:CD1	1:A:204:PRO:HA	2.50	0.47
1:C:198:THR:O	1:C:199:ARG:CD	2.63	0.46
1:C:163:VAL:HG13	1:C:164:VAL:HG23	1.97	0.46
1:C:227:TRP:CD2	1:C:230:VAL:HG13	2.51	0.46
1:A:88:LYS:HE3	1:A:131:GLN:NE2	2.30	0.46
2:D:395:HIS:HE1	2:D:427:PRO:O	1.99	0.46
1:C:157:ARG:NH1	2:D:268:GLU:OE2	2.46	0.46
1:C:230:VAL:HA	1:C:233:MET:HG3	1.97	0.45
2:B:195:PRO:HD3	4:B:2030:HOH:O	2.17	0.45
2:B:388:LYS:O	2:B:392:MET:HG2	2.17	0.45
1:C:227:TRP:CE3	1:C:230:VAL:HG13	2.51	0.45
2:D:196:LYS:HE2	2:D:196:LYS:HB3	1.69	0.45
2:D:176:PRO:HB2	4:D:2011:HOH:O	2.16	0.45
2:D:388:LYS:O	2:D:392:MET:HG2	2.16	0.45
1:A:246:GLN:CG	4:A:2078:HOH:O	2.65	0.44
2:D:271:TYR:HB3	4:D:2035:HOH:O	2.17	0.44
1:A:71:HIS:NE2	2:B:296:HIS:CD2	2.85	0.44
1:A:22:ARG:HG2	1:A:29:VAL:HG22	1.99	0.44
2:B:255:LEU:HB2	2:B:286:TYR:CZ	2.52	0.44
1:A:15:TYR:CE1	1:A:35:ILE:HG12	2.52	0.44
1:A:77:TYR:C	1:A:78:LEU:HD23	2.38	0.44

Continued on next page...

Continued from previous page...

Atom-1	Atom-2	Distance(Å)	Clash(Å)
1:A:51:GLU:HG3	1:A:55:LEU:HD22	1.99	0.44
1:C:119:HIS:HE1	1:C:185:ASP:OD2	2.01	0.43
1:C:260:ARG:HD3	4:C:2090:HOH:O	2.17	0.43
1:C:15:TYR:CZ	1:C:47:THR:HG23	2.53	0.43
1:C:15:TYR:HE1	1:C:48:ALA:HB2	1.83	0.43
1:A:294:PRO:HB2	1:A:296:LEU:HG	2.00	0.43
2:D:345:ASP:HA	2:D:346:PRO:HA	1.82	0.43
2:B:254:GLN:HB3	2:B:286:TYR:OH	2.18	0.43
2:B:255:LEU:HB2	2:B:286:TYR:CE1	2.53	0.43
1:A:51:GLU:O	1:A:55:LEU:HB2	2.18	0.43
2:B:401:ALA:N	2:B:402:PRO:CD	2.81	0.43
2:D:275:VAL:HG21	2:D:292:LEU:HD21	2.01	0.43
3:A:1297:DT5:N1	3:A:1297:DT5:H6C2	2.34	0.42
1:A:44:VAL:HA	1:A:45:PRO:HD3	1.87	0.42
1:C:7:VAL:HG12	1:C:8:GLU:HG2	2.00	0.42
2:B:348:LEU:HD12	2:B:348:LEU:HA	1.97	0.42
2:D:378:ARG:CD	4:D:2058:HOH:O	2.67	0.42
1:A:273:LYS:NZ	4:A:2084:HOH:O	2.52	0.42
1:C:71:HIS:HB3	4:C:2027:HOH:O	2.18	0.42
1:A:119:HIS:CD2	1:A:182:THR:HB	2.54	0.42
1:C:126:ARG:O	1:C:164:VAL:HG22	2.20	0.42
1:C:5:GLN:HE21	1:C:6:LYS:N	2.18	0.42
1:C:5:GLN:HG2	4:C:2001:HOH:O	2.20	0.42
2:B:385:GLU:HB2	4:B:2076:HOH:O	2.20	0.42
2:D:193:CYS:O	2:D:241:ARG:HD2	2.19	0.42
1:A:81:GLU:O	3:A:1297:DT5:H11	2.20	0.42
1:C:148:LEU:HD23	1:C:148:LEU:HA	1.87	0.42
1:A:255:LEU:HG	1:A:259:GLY:HA3	2.02	0.42
1:A:266:MET:O	1:A:274:ARG:HD3	2.20	0.42
1:A:198:THR:O	1:A:199:ARG:CB	2.66	0.41
1:C:57:GLU:CD	2:D:185:TYR:HH	2.23	0.41
2:B:196:LYS:HE2	2:B:196:LYS:HB3	1.70	0.41
1:A:11:GLY:CA	4:A:2004:HOH:O	2.68	0.41
2:D:296:HIS:HE1	2:D:300:LYS:HE2	1.85	0.41
1:A:181:SER:HB3	4:A:2060:HOH:O	2.20	0.41
1:A:268:HIS:CD2	4:A:2073:HOH:O	2.65	0.41
1:C:138:GLU:CD	4:C:2049:HOH:O	2.59	0.41
1:A:78:LEU:N	1:A:78:LEU:HD23	2.36	0.41
2:B:345:ASP:HA	2:B:346:PRO:HA	1.79	0.41
1:C:230:VAL:O	1:C:233:MET:HG3	2.20	0.41
2:B:344:ALA:O	2:B:348:LEU:HB2	2.21	0.41
1:A:257:GLU:HG3	1:C:257:GLU:HG3	2.03	0.41

Continued on next page...

Continued from previous page...

Atom-1	Atom-2	Distance(Å)	Clash(Å)
1:C:255:LEU:HA	1:C:255:LEU:HD12	1.91	0.41
2:B:201:LYS:HD3	4:B:2017:HOH:O	2.20	0.41
1:C:37:LEU:O	1:C:38:ASP:C	2.59	0.41
1:C:73:GLU:OE2	2:D:293:ARG:NH1	2.54	0.40
1:A:64:VAL:HG21	1:A:144:ALA:HB2	2.02	0.40
1:A:227:TRP:CE3	1:A:230:VAL:HG13	2.53	0.40
1:A:199:ARG:HB3	4:A:2034:HOH:O	2.21	0.40

There are no symmetry-related clashes.

5.3 Torsion angles

5.3.1 Protein backbone ⓘ

In the following table, the Percentiles column shows the percent Ramachandran outliers of the chain as a percentile score with respect to all X-ray entries followed by that with respect to entries of similar resolution. The Analysed column shows the number of residues for which the backbone conformation was analysed, and the total number of residues.

Mol	Chain	Analysed	Favoured	Allowed	Outliers	Percentiles	
1	A	293/298 (98%)	272 (93%)	16 (6%)	5 (2%)	14	25
1	C	293/298 (98%)	270 (92%)	18 (6%)	5 (2%)	14	25
2	B	256/258 (99%)	254 (99%)	2 (1%)	0	100	100
2	D	256/258 (99%)	250 (98%)	6 (2%)	0	100	100
All	All	1098/1112 (99%)	1046 (95%)	42 (4%)	10 (1%)	25	48

All (10) Ramachandran outliers are listed below:

Mol	Chain	Res	Type
1	C	17	VAL
1	C	39	THR
1	A	40	GLU
1	A	164	VAL
1	A	38	ASP
1	C	38	ASP
1	C	164	VAL
1	C	13	GLY
1	A	295	HIS
1	A	145	ASP

5.3.2 Protein sidechains ⓘ

In the following table, the Percentiles column shows the percent sidechain outliers of the chain as a percentile score with respect to all X-ray entries followed by that with respect to entries of similar resolution. The Analysed column shows the number of residues for which the sidechain conformation was analysed, and the total number of residues.

Mol	Chain	Analysed	Rotameric	Outliers	Percentiles	
1	A	260/262 (99%)	229 (88%)	31 (12%)	8	13
1	C	260/262 (99%)	225 (86%)	35 (14%)	6	9
2	B	232/232 (100%)	220 (95%)	12 (5%)	32	59
2	D	232/232 (100%)	219 (94%)	13 (6%)	30	54
All	All	984/988 (100%)	893 (91%)	91 (9%)	13	24

All (91) residues with a non-rotameric sidechain are listed below:

Mol	Chain	Res	Type
1	A	2	GLU
1	A	24	LYS
1	A	34	LYS
1	A	36	ARG
1	A	39	THR
1	A	55	LEU
1	A	56	LYS
1	A	73	GLU
1	A	74	ASN
1	A	83	LEU
1	A	94	SER
1	A	97	THR
1	A	120	SER
1	A	122	ARG
1	A	131	GLN
1	A	163	VAL
1	A	166	LEU
1	A	169	ARG
1	A	178	LYS
1	A	199	ARG
1	A	200	ARG
1	A	214	ARG
1	A	226	VAL
1	A	230	VAL
1	A	246	GLN
1	A	255	LEU

Continued on next page...

Continued from previous page...

Mol	Chain	Res	Type
1	A	257	GLU
1	A	278	LYS
1	A	287	GLN
1	A	291	LYS
1	A	295	HIS
2	B	196	LYS
2	B	202	LYS
2	B	232	LEU
2	B	253	LEU
2	B	289	LYS
2	B	323	GLN
2	B	348	LEU
2	B	384	LEU
2	B	388	LYS
2	B	391	LEU
2	B	414	LYS
2	B	417	LYS
1	C	2	GLU
1	C	9	LYS
1	C	12	GLU
1	C	15	TYR
1	C	17	VAL
1	C	36	ARG
1	C	38	ASP
1	C	47	THR
1	C	49	ILE
1	C	55	LEU
1	C	64	VAL
1	C	65	LYS
1	C	73	GLU
1	C	74	ASN
1	C	78	LEU
1	C	96	LEU
1	C	97	THR
1	C	122	ARG
1	C	137	THR
1	C	150	ARG
1	C	163	VAL
1	C	166	LEU
1	C	199	ARG
1	C	200	ARG
1	C	206	ASP

Continued on next page...

Continued from previous page...

Mol	Chain	Res	Type
1	C	209	ILE
1	C	226	VAL
1	C	230	VAL
1	C	233	MET
1	C	237	LYS
1	C	242	LYS
1	C	250	LYS
1	C	287	GLN
1	C	295	HIS
1	C	296	LEU
2	D	196	LYS
2	D	197	VAL
2	D	202	LYS
2	D	232	LEU
2	D	253	LEU
2	D	289	LYS
2	D	323	GLN
2	D	348	LEU
2	D	384	LEU
2	D	388	LYS
2	D	391	LEU
2	D	414	LYS
2	D	417	LYS

Some sidechains can be flipped to improve hydrogen bonding and reduce clashes. All (26) such sidechains are listed below:

Mol	Chain	Res	Type
1	A	59	ASN
1	A	60	HIS
1	A	74	ASN
1	A	85	GLN
1	A	113	GLN
1	A	119	HIS
1	A	268	HIS
2	B	183	HIS
2	B	254	GLN
2	B	395	HIS
2	B	396	GLN
2	B	419	HIS
1	C	5	GLN
1	C	59	ASN
1	C	60	HIS

Continued on next page...

Continued from previous page...

Mol	Chain	Res	Type
1	C	71	HIS
1	C	113	GLN
1	C	119	HIS
1	C	265	GLN
2	D	183	HIS
2	D	233	HIS
2	D	254	GLN
2	D	296	HIS
2	D	395	HIS
2	D	396	GLN
2	D	419	HIS

5.3.3 RNA ⓘ

There are no RNA chains in this entry.

5.4 Non-standard residues in protein, DNA, RNA chains ⓘ

2 non-standard protein/DNA/RNA residues are modelled in this entry.

In the following table, the Counts columns list the number of bonds (or angles) for which Mogul statistics could be retrieved, the number of bonds (or angles) that are observed in the model and the number of bonds (or angles) that are defined in the chemical component dictionary. The Link column lists molecule types, if any, to which the group is linked. The Z score for a bond length (or angle) is the number of standard deviations the observed value is removed from the expected value. A bond length (or angle) with $|Z| > 2$ is considered an outlier worth inspection. RMSZ is the root-mean-square of all Z scores of the bond lengths (or angles).

Mol	Type	Chain	Res	Link	Bond lengths			Bond angles		
					Counts	RMSZ	$\# Z > 2$	Counts	RMSZ	$\# Z > 2$
1	TPO	A	160	1	10,10,11	5.99	4 (40%)	12,14,16	1.51	2 (16%)
1	TPO	C	160	1	10,10,11	6.51	4 (40%)	12,14,16	2.58	4 (33%)

In the following table, the Chirals column lists the number of chiral outliers, the number of chiral centers analysed, the number of these observed in the model and the number defined in the chemical component dictionary. Similar counts are reported in the Torsion and Rings columns. '-' means no outliers of that kind were identified.

Mol	Type	Chain	Res	Link	Chirals	Torsions	Rings
1	TPO	A	160	1	-	0/9/11/13	0/0/0/0
1	TPO	C	160	1	-	0/9/11/13	0/0/0/0

All (8) bond length outliers are listed below:

Mol	Chain	Res	Type	Atoms	Z	Observed(Å)	Ideal(Å)
1	A	160	TPO	O-C	18.06	1.23	1.11
1	C	160	TPO	O-C	17.52	1.23	1.11
1	C	160	TPO	OG1-CB	-7.54	1.30	1.45
1	C	160	TPO	CB-CA	6.96	1.64	1.53
1	A	160	TPO	CB-CA	3.12	1.58	1.53
1	A	160	TPO	CA-C	3.02	1.54	1.48
1	A	160	TPO	OG1-CB	2.79	1.50	1.45
1	C	160	TPO	CA-C	2.32	1.52	1.48

All (6) bond angle outliers are listed below:

Mol	Chain	Res	Type	Atoms	Z	Observed(°)	Ideal(°)
1	C	160	TPO	P-OG1-CB	7.18	151.81	120.17
1	A	160	TPO	CB-CA-N	-4.09	103.88	109.60
1	C	160	TPO	OG1-CB-CG2	-3.15	104.86	110.13
1	C	160	TPO	CB-CA-N	2.47	113.05	109.60
1	C	160	TPO	C-CA-N	-2.24	108.29	111.94
1	A	160	TPO	OG1-CB-CA	-2.16	103.93	107.55

There are no chirality outliers.

There are no torsion outliers.

There are no ring outliers.

5.5 Carbohydrates ⓘ

There are no carbohydrates in this entry.

5.6 Ligand geometry ⓘ

2 ligands are modelled in this entry.

In the following table, the Counts columns list the number of bonds (or angles) for which Mogul statistics could be retrieved, the number of bonds (or angles) that are observed in the model and the number of bonds (or angles) that are defined in the chemical component dictionary. The Link column lists molecule types, if any, to which the group is linked. The Z score for a bond length (or angle) is the number of standard deviations the observed value is removed from the expected value. A bond length (or angle) with $|Z| > 2$ is considered an outlier worth inspection. RMSZ is the root-mean-square of all Z scores of the bond lengths (or angles).

Mol	Type	Chain	Res	Link	Bond lengths			Bond angles		
					Counts	RMSZ	# Z > 2	Counts	RMSZ	# Z > 2
3	DT5	A	1297	-	30,30,30	1.85	9 (30%)	42,43,43	2.40	11 (26%)
3	DT5	C	1297	-	30,30,30	1.76	6 (20%)	42,43,43	2.50	12 (28%)

In the following table, the Chirals column lists the number of chiral outliers, the number of chiral centers analysed, the number of these observed in the model and the number defined in the chemical component dictionary. Similar counts are reported in the Torsion and Rings columns. '-' means no outliers of that kind were identified.

Mol	Type	Chain	Res	Link	Chirals	Torsions	Rings
3	DT5	A	1297	-	-	0/14/22/22	0/2/4/4
3	DT5	C	1297	-	-	0/14/22/22	0/2/4/4

All (15) bond length outliers are listed below:

Mol	Chain	Res	Type	Atoms	Z	Observed(Å)	Ideal(Å)
3	C	1297	DT5	C10-N2	-5.10	1.32	1.38
3	C	1297	DT5	C7-N1	4.31	1.37	1.30
3	A	1297	DT5	C10-N2	-3.94	1.33	1.38
3	A	1297	DT5	C10-N4	-3.54	1.32	1.36
3	A	1297	DT5	C7-N1	3.32	1.35	1.30
3	A	1297	DT5	C11-N4	3.24	1.37	1.34
3	A	1297	DT5	C10-N1	3.11	1.35	1.32
3	C	1297	DT5	C10-N1	2.89	1.35	1.32
3	A	1297	DT5	C9-N2	-2.73	1.32	1.38
3	C	1297	DT5	C11-N3	2.60	1.36	1.32
3	C	1297	DT5	C9-N2	-2.39	1.33	1.38
3	A	1297	DT5	N3-N2	-2.38	1.33	1.36
3	C	1297	DT5	N3-N2	-2.35	1.33	1.36
3	A	1297	DT5	C9-N5	-2.27	1.35	1.39
3	A	1297	DT5	C8-C7	2.03	1.41	1.38

All (23) bond angle outliers are listed below:

Mol	Chain	Res	Type	Atoms	Z	Observed(°)	Ideal(°)
3	A	1297	DT5	C11-N4-C10	8.50	107.05	102.41
3	C	1297	DT5	C11-N4-C10	8.26	106.92	102.41
3	C	1297	DT5	C7-O1-C1	-6.41	111.34	117.86
3	C	1297	DT5	O3-S1-O2	-5.58	109.08	118.78
3	A	1297	DT5	O3-S1-O2	-5.35	109.48	118.78
3	A	1297	DT5	C7-O1-C1	-4.99	112.78	117.86
3	A	1297	DT5	N5-C9-N2	4.87	119.61	113.69
3	C	1297	DT5	N5-C9-N2	4.87	119.61	113.69

Continued on next page...

Continued from previous page...

Mol	Chain	Res	Type	Atoms	Z	Observed(°)	Ideal(°)
3	A	1297	DT5	N4-C10-N1	3.89	129.03	128.15
3	C	1297	DT5	C8-C7-N1	-3.87	119.35	124.03
3	A	1297	DT5	C8-C7-N1	-3.85	119.37	124.03
3	C	1297	DT5	N3-C11-N4	-3.79	107.54	115.02
3	A	1297	DT5	N3-C11-N4	-3.66	107.79	115.02
3	C	1297	DT5	N4-C10-N1	3.31	128.89	128.15
3	C	1297	DT5	O1-C7-C8	3.17	120.00	115.77
3	A	1297	DT5	O1-C7-C8	2.75	119.44	115.77
3	C	1297	DT5	C11-N3-N2	2.70	107.10	102.72
3	A	1297	DT5	C11-N3-N2	2.58	106.91	102.72
3	C	1297	DT5	C7-N1-C10	2.36	118.95	116.58
3	C	1297	DT5	O2-S1-N6	2.20	110.69	107.28
3	C	1297	DT5	C8-C9-N2	2.14	118.92	114.87
3	A	1297	DT5	C8-C9-N2	2.10	118.84	114.87
3	A	1297	DT5	C7-N1-C10	2.07	118.65	116.58

There are no chirality outliers.

There are no torsion outliers.

There are no ring outliers.

5.7 Other polymers ⓘ

There are no such residues in this entry.

5.8 Polymer linkage issues

There are no chain breaks in this entry.

6 Fit of model and data ⓘ

6.1 Protein, DNA and RNA chains ⓘ

In the following table, the column labelled ‘#RSRZ> 2’ contains the number (and percentage) of RSRZ outliers, followed by percent RSRZ outliers for the chain as percentile scores relative to all X-ray entries and entries of similar resolution. The OWAB column contains the minimum, median, 95th percentile and maximum values of the occupancy-weighted average B-factor per residue. The column labelled ‘Q< 0.9’ lists the number of (and percentage) of residues with an average occupancy less than 0.9.

Mol	Chain	Analysed	<RSRZ>	#RSRZ>2		OWAB(Å ²)	Q<0.9
1	A	296/298 (99%)	-0.51	10 (3%)	43 40	13, 24, 48, 73	8 (2%)
1	C	296/298 (99%)	-0.41	13 (4%)	33 29	14, 25, 54, 68	7 (2%)
2	B	258/258 (100%)	-0.52	2 (0%)	83 84	15, 27, 43, 56	0
2	D	258/258 (100%)	-0.52	3 (1%)	75 77	15, 27, 43, 56	0
All	All	1108/1112 (99%)	-0.49	28 (2%)	54 52	13, 26, 48, 73	15 (1%)

All (28) RSRZ outliers are listed below:

Mol	Chain	Res	Type	RSRZ
1	A	295	HIS	6.4
1	A	296	LEU	4.9
1	C	39	THR	4.7
1	C	296	LEU	4.3
1	C	295	HIS	3.8
1	C	38	ASP	3.6
1	C	14	THR	3.5
1	C	40	GLU	3.3
2	D	323	GLN	3.1
1	A	39	THR	3.1
1	A	96	LEU	3.1
1	A	38	ASP	2.7
2	D	324	PRO	2.6
1	C	36	ARG	2.6
2	D	283	ASP	2.6
1	A	41	THR	2.6
1	C	250	LYS	2.5
1	A	97	THR	2.5
1	C	293	VAL	2.4
1	A	40	GLU	2.4
1	C	2	GLU	2.4

Continued on next page...

Continued from previous page...

Mol	Chain	Res	Type	RSRZ
2	B	324	PRO	2.3
1	A	294	PRO	2.2
2	B	323	GLN	2.2
1	A	95	ALA	2.1
1	C	41	THR	2.1
1	C	294	PRO	2.0
1	C	239	SER	2.0

6.2 Non-standard residues in protein, DNA, RNA chains ⓘ

In the following table, the Atoms column lists the number of modelled atoms in the group and the number defined in the chemical component dictionary. LLDF column lists the quality of electron density of the group with respect to its neighbouring residues in protein, DNA or RNA chains. The B-factors column lists the minimum, median, 95th percentile and maximum values of B factors of atoms in the group. The column labelled 'Q< 0.9' lists the number of atoms with occupancy less than 0.9.

Mol	Type	Chain	Res	Atoms	RSR	LLDF	B-factors(Å ²)	Q<0.9
1	TPO	C	160	11/12	0.14	-0.12	23,28,33,33	0
1	TPO	A	160	11/12	0.10	-0.75	13,20,23,24	0

6.3 Carbohydrates ⓘ

There are no carbohydrates in this entry.

6.4 Ligands ⓘ

In the following table, the Atoms column lists the number of modelled atoms in the group and the number defined in the chemical component dictionary. LLDF column lists the quality of electron density of the group with respect to its neighbouring residues in protein, DNA or RNA chains. The B-factors column lists the minimum, median, 95th percentile and maximum values of B factors of atoms in the group. The column labelled 'Q< 0.9' lists the number of atoms with occupancy less than 0.9.

Mol	Type	Chain	Res	Atoms	RSR	LLDF	B-factors(Å ²)	Q<0.9
3	DT5	A	1297	27/27	0.12	-0.25	14,16,29,30	0
3	DT5	C	1297	27/27	0.10	-0.97	11,17,20,24	0

6.5 Other polymers ⓘ

There are no such residues in this entry.