



Full wwPDB X-ray Structure Validation Report

Feb 27, 2014 – 11:25 PM GMT

PDB ID : 3C6T
Title : Crystal Structure of HIV Reverse Transcriptase in complex with inhibitor 14
Authors : Yan, Y.; Prasad, S.
Deposited on : 2008-02-05
Resolution : 2.70 Å(reported)

This is a full wwPDB validation report for a publicly released PDB entry.
We welcome your comments at validation@mail.wwpdb.org
A user guide is available at <http://wwpdb.org/ValidationPDFNotes.html>

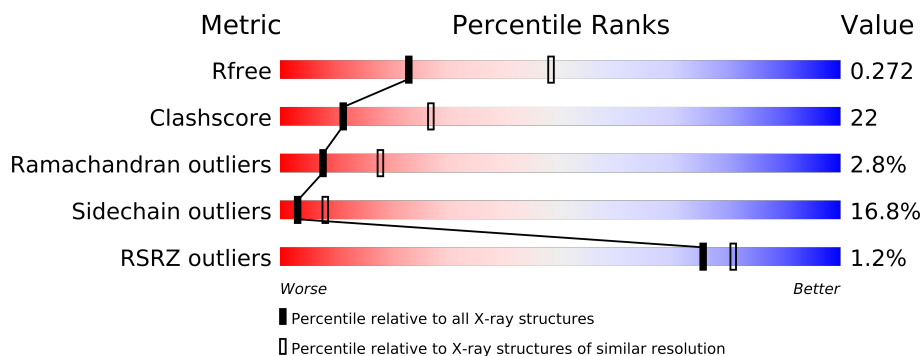
The following versions of software and data (see [references](#)) were used in the production of this report:

MolProbity : 4.02b-467
Mogul : 1.15 2013
Xtriage (Phenix) : dev-1323
EDS : stable22639
Percentile statistics : 21963
Refmac : 5.8.0049
CCP4 : 6.3.0 (Settle)
Ideal geometry (proteins) : Engh & Huber (2001)
Ideal geometry (DNA, RNA) : Parkinson et. al. (1996)
Validation Pipeline (wwPDB-VP) : stable22683

1 Overall quality at a glance

The reported resolution of this entry is 2.70 Å.

Percentile scores (ranging between 0-100) for global validation metrics of the entry are shown in the following graphic. The table shows the number of entries on which the scores are based.



Metric	Whole archive (#Entries)	Similar resolution (#Entries, resolution range(Å))
R_{free}	66092	1557 (2.70-2.70)
Clashscore	79885	1939 (2.70-2.70)
Ramachandran outliers	78287	1905 (2.70-2.70)
Sidechain outliers	78261	1905 (2.70-2.70)
RSRZ outliers	66119	1559 (2.70-2.70)

The table below summarises the geometric issues observed across the polymeric chains and their fit to the electron density. The red, orange, yellow and green segments on the lower bar indicate the fraction of residues that contain outliers for ≥ 3 , 2, 1 and 0 types of geometric quality criteria. The upper red bar (where present) indicates the fraction of residues that have poor fit to the electron density.

Mol	Chain	Length	Quality of chain
1	A	563	
2	B	443	

2 Entry composition

There are 4 unique types of molecules in this entry. The entry contains 8293 atoms, of which 0 are hydrogen and 0 are deuterium.

In the tables below, the ZeroOcc column contains the number of atoms modelled with zero occupancy, the AltConf column contains the number of residues with at least one atom in alternate conformation and the Trace column contains the number of residues modelled with at most 2 atoms.

- Molecule 1 is a protein called Reverse transcriptase.

Mol	Chain	Residues	Atoms					ZeroOcc	AltConf	Trace
1	A	559	Total	C	N	O	S	0	0	0
			4550	2938	762	842	8			

There are 3 discrepancies between the modelled and reference sequences:

Chain	Residue	Modelled	Actual	Comment	Reference
A	-2	MET	-	EXPRESSION TAG	UNP P04585
A	-1	ASN	-	EXPRESSION TAG	UNP P04585
A	0	SER	-	EXPRESSION TAG	UNP P04585

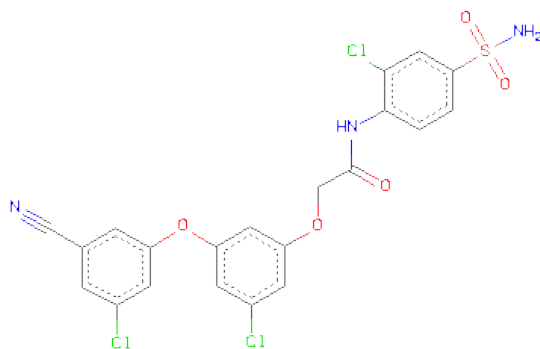
- Molecule 2 is a protein called Reverse transcriptase.

Mol	Chain	Residues	Atoms					ZeroOcc	AltConf	Trace
2	B	404	Total	C	N	O	S	0	0	0
			3344	2176	554	608	6			

There are 3 discrepancies between the modelled and reference sequences:

Chain	Residue	Modelled	Actual	Comment	Reference
B	-2	MET	-	EXPRESSION TAG	UNP P04585
B	-1	ASN	-	EXPRESSION TAG	UNP P04585
B	0	SER	-	EXPRESSION TAG	UNP P04585

- Molecule 3 is 2-[3-CHLORO-5-(3-CHLORO-5-CYANOPHENOXY)PHENOXY]-N-(2-CHLORO-4-SULFAMOYLPHENYL)ACETAMIDE (three-letter code: M14) (formula: C₂₁H₁₄Cl₃N₃O₅S).



Mol	Chain	Residues	Atoms						ZeroOcc	AltConf
3	A	1	Total	C	Cl	N	O	S	0	0
			33	21	3	3	5	1		

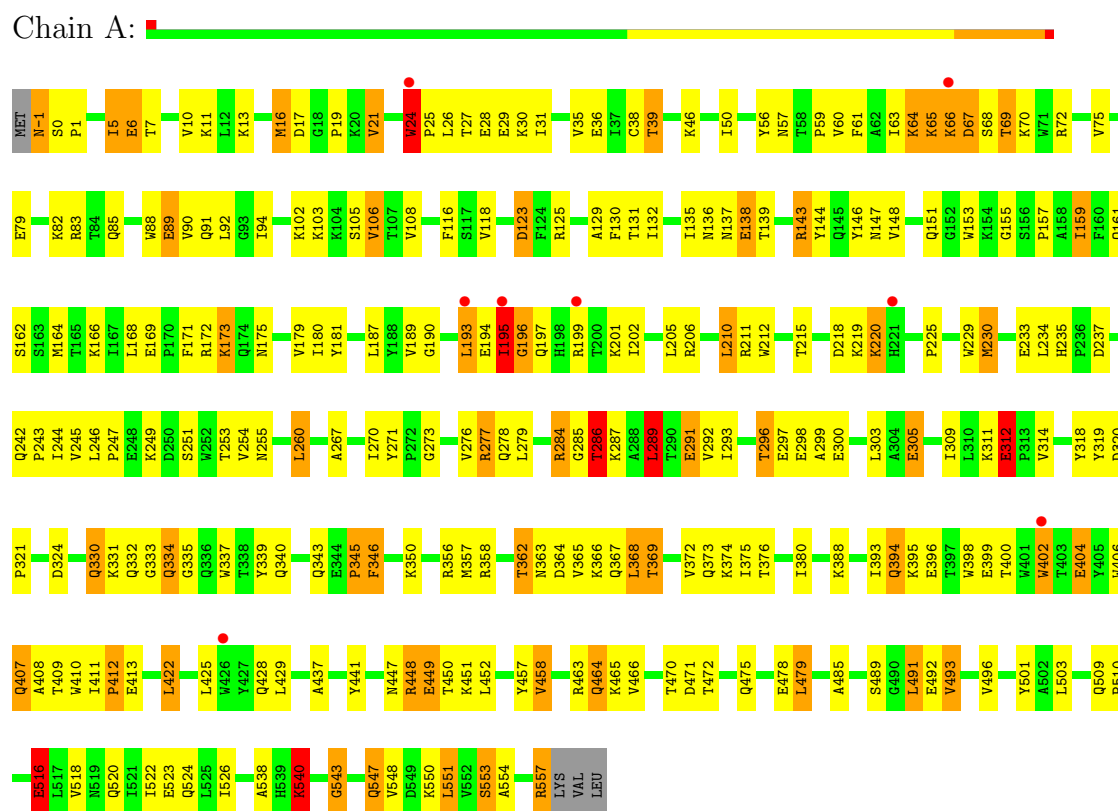
- Molecule 4 is water.

Mol	Chain	Residues	Atoms		ZeroOcc	AltConf
4	A	209	Total	O	0	0
			209	209		
4	B	157	Total	O	0	0
			157	157		

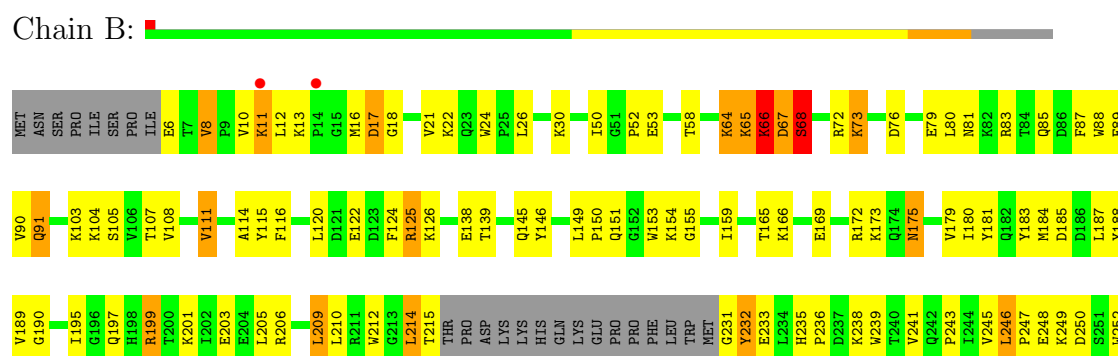
3 Residue-property plots

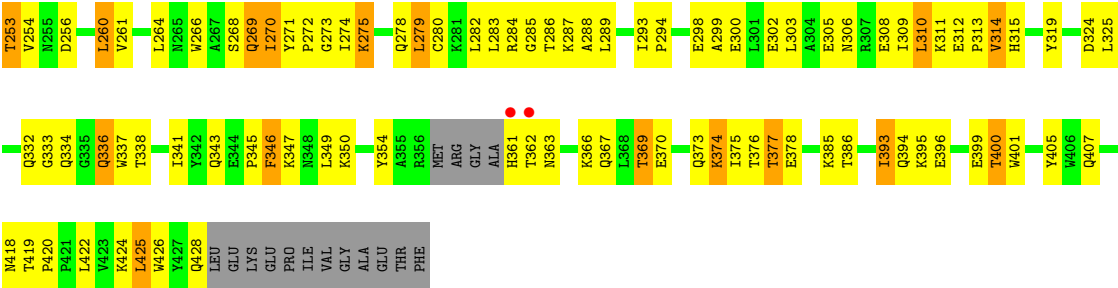
These plots are drawn for all protein, RNA and DNA chains in the entry. The first graphic for a chain summarises the proportions of errors displayed in the second graphic. The second graphic shows the sequence view annotated by issues in geometry and electron density. Residues are color-coded according to the number of geometric quality criteria for which they contain at least one outlier: green = 0, yellow = 1, orange = 2 and red = 3 or more. A red dot above a residue indicates a poor fit to the electron density ($RSRZ > 2$). Stretches of 2 or more consecutive residues without any outlier are shown as a green connector. Residues present in the sample, but not in the model, are shown in grey.

• Molecule 1: Reverse transcriptase



• Molecule 2: Reverse transcriptase





4 Data and refinement statistics

Property	Value	Source
Space group	C 2 2 21	Depositor
Cell constants a, b, c, α , β , γ	118.29Å 154.51Å 155.70Å 90.00° 90.00° 90.00°	Depositor
Resolution (Å)	47.22 – 2.70 47.22 – 2.70	Depositor EDS
% Data completeness (in resolution range)	93.3 (47.22-2.70) 93.3 (47.22-2.70)	Depositor EDS
R_{merge}	(Not available)	Depositor
R_{sym}	0.10	Depositor
$\langle I/\sigma(I) \rangle$ ¹	2.06 (at 2.69Å)	Xtriage
Refinement program	REFMAC 5.2.0019	Depositor
R, R_{free}	0.202 , 0.281 0.199 , 0.272	Depositor DCC
R_{free} test set	1857 reflections (5.30%)	DCC
Wilson B-factor (Å ²)	53.9	Xtriage
Anisotropy	0.042	Xtriage
Bulk solvent k_{sol} (e/Å ³), B_{sol} (Å ²)	0.34 , 46.7	EDS
Estimated twinning fraction	No twinning to report.	Xtriage
L-test for twinning	$\langle L \rangle = 0.50$, $\langle L^2 \rangle = 0.33$	Xtriage
Outliers	0 of 36923 reflections	Xtriage
F_o, F_c correlation	0.94	EDS
Total number of atoms	8293	wwPDB-VP
Average B, all atoms (Å ²)	48.0	wwPDB-VP

Xtriage's analysis on translational NCS is as follows: *The largest off-origin peak in the Patterson function is 4.00% of the height of the origin peak. No significant pseudotranslation is detected.*

¹Intensities estimated from amplitudes.

5 Model quality

5.1 Standard geometry

Bond lengths and bond angles in the following residue types are not validated in this section: M14

The Z score for a bond length (or angle) is the number of standard deviations the observed value is removed from the expected value. A bond length (or angle) with $|Z| > 5$ is considered an outlier worth inspection. RMSZ is the root-mean-square of all Z scores of the bond lengths (or angles).

Mol	Chain	Bond lengths		Bond angles	
		RMSZ	$\# Z > 5$	RMSZ	$\# Z > 5$
1	A	0.92	2/4667 (0.0%)	0.91	5/6341 (0.1%)
2	B	0.90	2/3438 (0.1%)	0.89	0/4671
All	All	0.91	4/8105 (0.0%)	0.90	5/11012 (0.0%)

Chiral center outliers are detected by calculating the chiral volume of a chiral center and verifying if the center is modelled as a planar moiety or with the opposite hand. A planarity outlier is detected by checking planarity of atoms in a peptide group, atoms in a mainchain group or atoms of a sidechain that are expected to be planar.

Mol	Chain	#Chirality outliers	#Planarity outliers
1	A	0	1

All (4) bond length outliers are listed below:

Mol	Chain	Res	Type	Atoms	Z	Observed(Å)	Ideal(Å)
1	A	24	TRP	CB-CG	5.80	1.60	1.50
2	B	24	TRP	CB-CG	-5.72	1.40	1.50
1	A	516	GLU	CG-CD	5.22	1.59	1.51
2	B	181	TYR	CD1-CE1	-5.17	1.31	1.39

All (5) bond angle outliers are listed below:

Mol	Chain	Res	Type	Atoms	Z	Observed(°)	Ideal(°)
1	A	493	VAL	CB-CA-C	-7.12	97.88	111.40
1	A	540	LYS	N-CA-C	-7.04	92.00	111.00
1	A	289	LEU	CA-CB-CG	5.93	128.94	115.30
1	A	193	LEU	CA-CB-CG	5.72	128.45	115.30
1	A	479	LEU	CA-CB-CG	5.71	128.44	115.30

There are no chirality outliers.

All (1) planarity outliers are listed below:

Mol	Chain	Res	Type	Group
1	A	-1	ASN	Peptide

5.2 Close contacts ⓘ

In the following table, the Non-H and H(model) columns list the number of non-hydrogen atoms and hydrogen atoms in the chain respectively. The H(added) column lists the number of hydrogens added by MolProbity. The Clashes column lists the number of clashes within the asymmetric unit, and the number in parentheses is this value normalized per 1000 atoms of the molecule in the chain. The Symm-Clashes column gives symmetry related clashes, in the same way as for the Clashes column.

Mol	Chain	Non-H	H(model)	H(added)	Clashes	Symm-Clashes
1	A	4550	0	4601	219	0
2	B	3344	0	3369	147	0
3	A	33	0	14	10	0
4	A	209	0	0	21	0
4	B	157	0	0	11	0
All	All	8293	0	7984	354	0

Clashscore is defined as the number of clashes calculated for the entry per 1000 atoms (including hydrogens) of the entry. The overall clashscore for this entry is 22.

All (354) close contacts within the same asymmetric unit are listed below.

Atom-1	Atom-2	Distance(Å)	Clash(Å)
1:A:175:ASN:HD21	1:A:201:LYS:CE	1.54	1.20
1:A:175:ASN:ND2	1:A:201:LYS:CE	2.16	1.08
1:A:175:ASN:HD21	1:A:201:LYS:HE3	1.17	1.07
1:A:175:ASN:ND2	1:A:201:LYS:HE2	1.68	1.07
1:A:237:ASP:HB3	4:A:756:HOH:O	1.59	0.99
1:A:35:VAL:O	1:A:39:THR:HG23	1.61	0.99
1:A:448:ARG:HH11	1:A:448:ARG:HG3	1.30	0.96
1:A:277:ARG:CD	1:A:334:GLN:NE2	2.27	0.96
2:B:333:GLY:O	2:B:336:GLN:NE2	2.01	0.93
2:B:253:THR:HG22	2:B:256:ASP:H	1.36	0.91
1:A:125:ARG:HG2	1:A:146:TYR:O	1.73	0.89
1:A:197:GLN:HB2	4:A:662:HOH:O	1.76	0.86
2:B:270:ILE:HG22	2:B:346:PHE:HB3	1.57	0.86
1:A:296:THR:HG22	1:A:299:ALA:H	1.40	0.86
2:B:396:GLU:O	2:B:400:THR:HG22	1.74	0.86
2:B:250:ASP:HA	4:B:583:HOH:O	1.77	0.85
1:A:516:GLU:O	1:A:520:GLN:HG3	1.75	0.85

Continued on next page...

Continued from previous page...

Atom-1	Atom-2	Distance(Å)	Clash(Å)
2:B:345:PRO:O	2:B:346:PHE:HB2	1.78	0.84
2:B:350:LYS:HE2	2:B:378:GLU:OE1	1.78	0.84
1:A:466:VAL:CG2	1:A:551:LEU:HD23	2.09	0.83
1:A:273:GLY:HA2	1:A:332:GLN:NE2	1.93	0.83
1:A:296:THR:HG23	1:A:298:GLU:OE2	1.79	0.82
1:A:277:ARG:HD3	1:A:334:GLN:NE2	1.94	0.82
1:A:437:ALA:HB1	1:A:492:GLU:O	1.79	0.82
1:A:66:LYS:O	1:A:67:ASP:HB2	1.80	0.80
1:A:277:ARG:HD3	1:A:334:GLN:HE21	1.48	0.78
2:B:273:GLY:O	2:B:275:LYS:HG2	1.83	0.78
1:A:175:ASN:ND2	1:A:201:LYS:HE3	1.91	0.78
1:A:173:LYS:HE3	1:A:173:LYS:HA	1.64	0.77
1:A:244:ILE:HD13	1:A:267:ALA:HB2	1.66	0.77
1:A:175:ASN:HD22	1:A:201:LYS:HE2	1.48	0.77
2:B:73:LYS:NZ	2:B:146:TYR:OH	2.18	0.77
2:B:214:LEU:HD23	2:B:214:LEU:H	1.48	0.76
1:A:173:LYS:CE	1:A:173:LYS:HA	2.16	0.76
1:A:522:ILE:O	1:A:526:ILE:HG13	1.86	0.75
1:A:330:GLN:HE22	1:A:340:GLN:HE22	1.35	0.75
1:A:24:TRP:HB3	4:A:572:HOH:O	1.84	0.75
1:A:123:ASP:N	1:A:123:ASP:OD1	2.20	0.74
2:B:341:ILE:HD11	2:B:375:ILE:HG23	1.69	0.74
1:A:5:ILE:HG22	1:A:212:TRP:CE3	2.23	0.74
2:B:319:TYR:OH	2:B:385:LYS:HD2	1.88	0.74
1:A:373:GLN:OE1	2:B:400:THR:HG21	1.88	0.73
2:B:66:LYS:HB2	4:B:624:HOH:O	1.86	0.73
2:B:363:ASN:O	2:B:367:GLN:HG3	1.89	0.73
1:A:211:ARG:O	1:A:211:ARG:HD3	1.89	0.72
1:A:172:ARG:HH21	1:A:180:ILE:HB	1.52	0.72
1:A:478:GLU:HG2	4:A:576:HOH:O	1.89	0.72
1:A:162:SER:CB	2:B:52:PRO:HG3	2.20	0.71
2:B:85:GLN:O	2:B:89:GLU:HB3	1.90	0.71
1:A:311:LYS:O	1:A:312:GLU:OE1	2.09	0.71
1:A:91:GLN:HG2	4:A:640:HOH:O	1.91	0.71
1:A:79:GLU:HG3	1:A:83:ARG:HE	1.55	0.70
1:A:277:ARG:HG3	1:A:334:GLN:HE22	1.55	0.70
2:B:260:LEU:HD22	2:B:264:LEU:HD12	1.75	0.69
1:A:195:ILE:HG12	1:A:199:ARG:HE	1.58	0.69
2:B:195:ILE:O	2:B:199:ARG:HG2	1.93	0.69
1:A:376:THR:O	1:A:380:ILE:HD12	1.94	0.68
1:A:365:VAL:O	1:A:369:THR:CG2	2.42	0.68
2:B:268:SER:O	2:B:269:GLN:HB2	1.94	0.67

Continued on next page...

Continued from previous page...

Atom-1	Atom-2	Distance(Å)	Clash(Å)
1:A:400:THR:O	1:A:404:GLU:HG3	1.94	0.67
2:B:115:TYR:HB3	2:B:149:LEU:HB2	1.76	0.67
1:A:255:ASN:HB2	1:A:289:LEU:HD22	1.77	0.66
1:A:365:VAL:O	1:A:369:THR:HG22	1.96	0.66
2:B:305:GLU:O	2:B:309:ILE:HG13	1.95	0.66
1:A:277:ARG:CG	1:A:334:GLN:HE22	2.09	0.65
1:A:66:LYS:O	1:A:67:ASP:CB	2.45	0.65
2:B:314:VAL:O	2:B:315:HIS:HB3	1.97	0.65
2:B:373:GLN:O	2:B:377:THR:HG23	1.96	0.65
1:A:331:LYS:HE3	1:A:364:ASP:OD1	1.96	0.65
1:A:448:ARG:CG	1:A:448:ARG:HH11	2.08	0.65
1:A:277:ARG:HD2	1:A:334:GLN:NE2	2.11	0.64
2:B:396:GLU:O	2:B:400:THR:CG2	2.45	0.64
1:A:16:MET:CE	1:A:83:ARG:HA	2.27	0.64
1:A:273:GLY:HA2	1:A:332:GLN:HE21	1.63	0.63
2:B:11:LYS:N	2:B:11:LYS:HE2	2.14	0.63
1:A:172:ARG:NH2	1:A:180:ILE:HB	2.13	0.63
1:A:173:LYS:CA	1:A:173:LYS:HE3	2.29	0.63
2:B:210:LEU:O	2:B:210:LEU:HD12	1.98	0.63
2:B:64:LYS:O	2:B:65:LYS:HB2	1.98	0.63
1:A:27:THR:O	1:A:31:ILE:HG13	1.98	0.62
2:B:260:LEU:HD22	2:B:264:LEU:CD1	2.29	0.62
1:A:428:GLN:HG2	4:A:704:HOH:O	1.97	0.62
1:A:277:ARG:CG	1:A:334:GLN:NE2	2.62	0.62
1:A:372:VAL:HG11	1:A:411:ILE:HG23	1.81	0.61
1:A:466:VAL:CG2	1:A:551:LEU:CD2	2.79	0.61
2:B:185:ASP:HB2	4:B:498:HOH:O	2.01	0.61
1:A:88:TRP:CE3	1:A:88:TRP:HA	2.34	0.61
1:A:543:GLY:O	1:A:547:GLN:NE2	2.34	0.60
2:B:199:ARG:NH1	2:B:233:GLU:OE2	2.34	0.60
1:A:64:LYS:HE2	1:A:69:THR:HA	1.83	0.60
1:A:85:GLN:HE22	2:B:53:GLU:HB2	1.67	0.60
1:A:394:GLN:HG3	4:A:635:HOH:O	2.02	0.60
2:B:314:VAL:O	2:B:315:HIS:CB	2.49	0.60
2:B:306:ASN:O	2:B:310:LEU:HB2	2.01	0.60
2:B:270:ILE:O	2:B:272:PRO:HD3	2.01	0.59
2:B:422:LEU:HD23	2:B:425:LEU:HD21	1.83	0.59
1:A:162:SER:HB3	2:B:52:PRO:HG3	1.84	0.59
2:B:111:VAL:CG1	2:B:111:VAL:O	2.49	0.59
1:A:543:GLY:HA2	2:B:285:GLY:O	2.03	0.59
2:B:246:LEU:HD21	2:B:310:LEU:HD21	1.84	0.59
1:A:287:LYS:HB2	1:A:291:GLU:HG2	1.85	0.59

Continued on next page...

Continued from previous page...

Atom-1	Atom-2	Distance(Å)	Clash(Å)
1:A:318:TYR:CZ	3:A:561:M14:H20A	2.38	0.59
1:A:277:ARG:HG3	1:A:334:GLN:NE2	2.17	0.59
1:A:409:THR:HG22	1:A:410:TRP:N	2.17	0.58
2:B:8:VAL:HG11	2:B:159:ILE:HG23	1.85	0.58
1:A:289:LEU:HD12	4:A:800:HOH:O	2.03	0.58
2:B:175:ASN:ND2	2:B:201:LYS:HD2	2.18	0.58
1:A:475:GLN:HG2	1:A:501:TYR:CD2	2.38	0.58
1:A:449:GLU:HG3	4:A:705:HOH:O	2.02	0.58
2:B:369:THR:HG21	2:B:405:TYR:HB2	1.85	0.58
1:A:466:VAL:HG23	1:A:551:LEU:CD2	2.34	0.58
1:A:210:LEU:C	1:A:212:TRP:H	2.07	0.58
1:A:246:LEU:HD22	1:A:260:LEU:CD2	2.34	0.58
1:A:318:TYR:CD1	3:A:561:M14:H20A	2.39	0.58
1:A:210:LEU:C	1:A:212:TRP:N	2.55	0.58
1:A:318:TYR:CE2	3:A:561:M14:H20A	2.39	0.57
2:B:103:LYS:HE3	2:B:179:VAL:HG23	1.87	0.57
1:A:194:GLU:CD	1:A:194:GLU:H	2.08	0.57
1:A:206:ARG:NH1	1:A:218:ASP:HA	2.20	0.57
1:A:518:VAL:O	1:A:522:ILE:HD12	2.05	0.57
1:A:284:ARG:HH11	1:A:285:GLY:HA3	1.69	0.57
2:B:111:VAL:HG21	2:B:187:LEU:HD22	1.87	0.57
2:B:308:GLU:O	2:B:311:LYS:HG2	2.05	0.56
1:A:357:MET:HB3	4:A:786:HOH:O	2.05	0.56
1:A:318:TYR:CE1	3:A:561:M14:H20A	2.41	0.56
1:A:318:TYR:CD2	3:A:561:M14:H20A	2.40	0.56
1:A:466:VAL:HG23	1:A:551:LEU:HD23	1.86	0.56
1:A:284:ARG:NH1	1:A:284:ARG:O	2.39	0.56
1:A:543:GLY:CA	2:B:285:GLY:O	2.54	0.56
1:A:396:GLU:HB2	4:A:580:HOH:O	2.06	0.56
1:A:21:VAL:HG22	1:A:59:PRO:HD3	1.88	0.56
1:A:64:LYS:O	1:A:65:LYS:HB2	2.04	0.56
1:A:179:VAL:CG2	3:A:561:M14:CL1	2.91	0.56
2:B:246:LEU:HD21	2:B:310:LEU:CD2	2.36	0.55
1:A:242:GLN:HB3	1:A:243:PRO:CD	2.36	0.55
1:A:56:TYR:O	1:A:143:ARG:NH2	2.34	0.55
2:B:21:VAL:CG2	2:B:79:GLU:HG3	2.37	0.55
1:A:157:PRO:HD2	4:A:568:HOH:O	2.06	0.55
1:A:60:VAL:HG11	1:A:130:PHE:CD2	2.42	0.54
1:A:210:LEU:O	1:A:212:TRP:N	2.39	0.54
1:A:318:TYR:CG	3:A:561:M14:H20A	2.43	0.54
1:A:320:ASP:O	1:A:343:GLN:NE2	2.40	0.54
1:A:106:VAL:HA	1:A:189:VAL:O	2.08	0.54

Continued on next page...

Continued from previous page...

Atom-1	Atom-2	Distance(Å)	Clash(Å)
2:B:232:TYR:HE1	4:B:570:HOH:O	1.90	0.54
1:A:60:VAL:HG12	1:A:75:VAL:HG22	1.88	0.54
2:B:247:PRO:HB2	2:B:249:LYS:HE3	1.89	0.54
2:B:12:LEU:CD2	2:B:17:ASP:HA	2.38	0.54
2:B:293:ILE:HB	2:B:294:PRO:HD2	1.90	0.53
1:A:162:SER:HB2	2:B:52:PRO:HG3	1.90	0.53
2:B:215:THR:HA	4:B:486:HOH:O	2.07	0.53
1:A:408:ALA:HB3	2:B:393:ILE:HG13	1.90	0.53
1:A:457:TYR:C	1:A:457:TYR:CD1	2.82	0.53
1:A:406:TRP:CH2	2:B:418:ASN:HA	2.44	0.53
1:A:448:ARG:NH1	1:A:448:ARG:HG3	2.10	0.53
1:A:242:GLN:HB3	1:A:243:PRO:HD2	1.90	0.53
2:B:116:PHE:CZ	2:B:151:GLN:HG3	2.43	0.53
1:A:346:PHE:CD1	1:A:346:PHE:N	2.75	0.53
2:B:124:PHE:O	2:B:125:ARG:C	2.46	0.53
2:B:338:THR:HB	4:B:449:HOH:O	2.09	0.53
2:B:336:GLN:C	2:B:337:TRP:CD1	2.83	0.52
1:A:88:TRP:HE3	1:A:88:TRP:HA	1.74	0.52
2:B:13:LYS:HD2	2:B:85:GLN:N	2.24	0.52
1:A:331:LYS:HB2	1:A:337:TRP:CZ3	2.44	0.52
2:B:302:GLU:O	2:B:303:LEU:C	2.46	0.52
1:A:300:GLU:HG3	4:A:801:HOH:O	2.09	0.52
2:B:325:LEU:HD12	2:B:385:LYS:CG	2.40	0.52
2:B:107:THR:HA	2:B:232:TYR:O	2.08	0.52
1:A:57:ASN:ND2	1:A:131:THR:OG1	2.43	0.52
1:A:450:THR:HB	1:A:452:LEU:HG	1.90	0.52
1:A:409:THR:CG2	1:A:410:TRP:N	2.73	0.52
1:A:17:ASP:O	1:A:83:ARG:HD3	2.09	0.51
1:A:464:GLN:HG2	1:A:465:LYS:N	2.25	0.51
1:A:284:ARG:NH1	1:A:285:GLY:HA3	2.25	0.51
2:B:284:ARG:H	2:B:287:LYS:HZ3	1.57	0.51
1:A:485:ALA:O	1:A:489:SER:HB3	2.09	0.51
1:A:10:VAL:HG12	1:A:11:LYS:N	2.26	0.51
2:B:395:LYS:NZ	2:B:399:GLU:OE1	2.39	0.51
1:A:164:MET:HE3	1:A:187:LEU:HD21	1.91	0.51
2:B:254:VAL:CG1	2:B:289:LEU:HA	2.41	0.51
1:A:171:PHE:CD1	1:A:171:PHE:C	2.84	0.51
2:B:361:HIS:O	2:B:361:HIS:CG	2.64	0.51
1:A:91:GLN:C	1:A:92:LEU:HD22	2.31	0.51
2:B:324:ASP:O	2:B:343:GLN:HG2	2.11	0.51
1:A:466:VAL:HG22	1:A:551:LEU:HD23	1.91	0.51
1:A:5:ILE:HG22	1:A:212:TRP:CZ3	2.45	0.51

Continued on next page...

Continued from previous page...

Atom-1	Atom-2	Distance(Å)	Clash(Å)
2:B:166:LYS:HE2	2:B:166:LYS:N	2.25	0.51
2:B:12:LEU:HD23	2:B:17:ASP:HA	1.93	0.50
2:B:138:GLU:HG2	2:B:139:THR:HG23	1.93	0.50
1:A:225:PRO:HG3	3:A:561:M14:O25	2.11	0.50
2:B:122:GLU:O	2:B:125:ARG:HG3	2.12	0.50
1:A:164:MET:HE1	1:A:187:LEU:HD11	1.94	0.50
1:A:406:TRP:CZ3	1:A:407:GLN:HB2	2.47	0.50
1:A:194:GLU:O	1:A:195:ILE:C	2.50	0.50
1:A:333:GLY:O	1:A:335:GLY:N	2.45	0.50
2:B:422:LEU:CD2	2:B:425:LEU:HD21	2.42	0.49
2:B:199:ARG:HD3	2:B:233:GLU:OE1	2.12	0.49
2:B:206:ARG:HH21	2:B:231:GLY:N	2.10	0.49
2:B:282:LEU:HB3	2:B:293:ILE:HD11	1.93	0.49
2:B:165:THR:C	2:B:166:LYS:HE2	2.32	0.49
2:B:312:GLU:OE2	2:B:313:PRO:HD2	2.12	0.49
1:A:312:GLU:CD	1:A:312:GLU:O	2.51	0.49
1:A:25:PRO:HD2	4:A:572:HOH:O	2.11	0.49
1:A:278:GLN:HB3	1:A:299:ALA:HA	1.94	0.49
1:A:206:ARG:CZ	1:A:218:ASP:HA	2.43	0.49
1:A:229:TRP:CD2	1:A:230:MET:HB2	2.48	0.49
1:A:273:GLY:HA2	1:A:332:GLN:HE22	1.74	0.48
1:A:253:THR:HA	1:A:291:GLU:O	2.12	0.48
1:A:30:LYS:HE3	1:A:61:PHE:CE1	2.48	0.48
1:A:16:MET:HE1	1:A:83:ARG:HA	1.96	0.48
2:B:64:LYS:HA	2:B:64:LYS:HD3	1.52	0.48
1:A:116:PHE:O	1:A:148:VAL:HG11	2.12	0.48
1:A:5:ILE:HG12	1:A:6:GLU:O	2.13	0.48
1:A:16:MET:HE1	1:A:82:LYS:O	2.13	0.48
1:A:16:MET:HE2	1:A:83:ARG:HA	1.92	0.48
2:B:362:THR:HG22	2:B:367:GLN:HG2	1.95	0.48
2:B:268:SER:O	2:B:269:GLN:CB	2.61	0.48
1:A:441:TYR:O	1:A:548:VAL:HG21	2.14	0.48
2:B:175:ASN:HD21	2:B:201:LYS:HD2	1.79	0.48
2:B:153:TRP:CZ2	2:B:155:GLY:HA3	2.49	0.48
1:A:365:VAL:O	1:A:369:THR:HG23	2.14	0.48
2:B:366:LYS:HD2	2:B:405:TYR:CD1	2.49	0.48
1:A:406:TRP:HH2	2:B:418:ASN:OD1	1.97	0.48
2:B:180:ILE:HA	2:B:188:TYR:O	2.14	0.48
1:A:538:ALA:O	1:A:540:LYS:HD2	2.14	0.48
2:B:114:ALA:CB	2:B:214:LEU:HD22	2.44	0.47
1:A:195:ILE:CG2	1:A:196:GLY:N	2.77	0.47
2:B:373:GLN:NE2	2:B:407:GLN:H	2.12	0.47

Continued on next page...

Continued from previous page...

Atom-1	Atom-2	Distance(Å)	Clash(Å)
1:A:324:ASP:O	1:A:343:GLN:HG2	2.14	0.47
2:B:105:SER:O	2:B:190:GLY:HA2	2.14	0.47
1:A:254:VAL:HG11	1:A:286:THR:HG21	1.96	0.47
1:A:210:LEU:O	1:A:211:ARG:C	2.53	0.47
1:A:171:PHE:CD1	1:A:171:PHE:O	2.68	0.47
1:A:102:LYS:HE3	1:A:237:ASP:HA	1.97	0.47
2:B:362:THR:HG22	2:B:367:GLN:CG	2.45	0.47
1:A:94:ILE:O	1:A:94:ILE:HG13	2.14	0.47
1:A:38:CYS:SG	1:A:132:ILE:HD11	2.55	0.47
1:A:125:ARG:NH1	1:A:147:ASN:HB3	2.30	0.47
2:B:279:LEU:O	2:B:282:LEU:HB2	2.14	0.47
1:A:155:GLY:O	1:A:159:ILE:HG13	2.15	0.47
1:A:286:THR:HG23	1:A:287:LYS:O	2.16	0.46
1:A:396:GLU:HA	1:A:399:GLU:HG2	1.97	0.46
1:A:179:VAL:HG22	3:A:561:M14:CL1	2.53	0.46
1:A:164:MET:CE	1:A:187:LEU:HD11	2.46	0.46
1:A:179:VAL:HG21	3:A:561:M14:CL1	2.53	0.46
2:B:278:GLN:O	2:B:282:LEU:HD23	2.15	0.46
2:B:165:THR:HG22	2:B:166:LYS:CE	2.46	0.46
2:B:111:VAL:HG13	2:B:111:VAL:O	2.15	0.46
1:A:320:ASP:HA	1:A:321:PRO:HD2	1.75	0.46
2:B:108:VAL:HB	2:B:232:TYR:HB3	1.97	0.46
1:A:29:GLU:HG2	4:A:648:HOH:O	2.15	0.46
2:B:376:THR:HG23	2:B:386:THR:HB	1.98	0.46
2:B:169:GLU:OE2	2:B:169:GLU:HA	2.16	0.46
1:A:449:GLU:HB2	4:A:705:HOH:O	2.16	0.45
1:A:13:LYS:HB2	1:A:16:MET:HG3	1.99	0.45
2:B:283:LEU:HA	2:B:287:LYS:HZ1	1.80	0.45
1:A:398:TRP:CH2	1:A:411:ILE:CD1	2.99	0.45
2:B:124:PHE:O	2:B:126:LYS:N	2.49	0.45
1:A:38:CYS:HB3	1:A:144:TYR:CE2	2.52	0.45
2:B:282:LEU:HD21	2:B:299:ALA:HB2	1.97	0.45
2:B:197:GLN:HB3	4:B:457:HOH:O	2.17	0.45
1:A:103:LYS:HA	1:A:103:LYS:HD3	1.74	0.45
1:A:287:LYS:N	1:A:287:LYS:HD2	2.31	0.45
1:A:388:LYS:HD2	1:A:413:GLU:OE1	2.17	0.45
1:A:251:SER:HB3	1:A:292:VAL:HG11	1.99	0.45
1:A:233:GLU:HG2	1:A:235:HIS:CE1	2.52	0.45
1:A:28:GLU:HG3	4:A:585:HOH:O	2.17	0.45
1:A:362:THR:OG1	1:A:363:ASN:N	2.50	0.45
2:B:149:LEU:HA	2:B:150:PRO:HD3	1.87	0.44
2:B:172:ARG:HD2	4:B:496:HOH:O	2.17	0.44

Continued on next page...

Continued from previous page...

Atom-1	Atom-2	Distance(Å)	Clash(Å)
2:B:209:LEU:HG	2:B:214:LEU:HD12	1.98	0.44
2:B:354:TYR:OH	2:B:370:GLU:OE2	2.34	0.44
1:A:447:ASN:C	1:A:447:ASN:OD1	2.55	0.44
2:B:373:GLN:HE22	2:B:407:GLN:H	1.65	0.44
2:B:17:ASP:CG	2:B:18:GLY:N	2.70	0.44
2:B:183:TYR:CE2	2:B:184:MET:HG3	2.53	0.44
1:A:50:ILE:HG22	4:A:609:HOH:O	2.18	0.44
2:B:67:ASP:O	2:B:68:SER:CB	2.65	0.44
2:B:239:TRP:CZ2	2:B:378:GLU:HG2	2.53	0.43
2:B:350:LYS:NZ	4:B:543:HOH:O	2.51	0.43
1:A:19:PRO:HB3	1:A:79:GLU:HB3	2.00	0.43
1:A:458:VAL:HG13	1:A:548:VAL:HG22	2.01	0.43
2:B:337:TRP:CD1	2:B:337:TRP:N	2.86	0.43
2:B:341:ILE:HD11	2:B:375:ILE:CG2	2.45	0.43
1:A:245:VAL:HG13	1:A:245:VAL:O	2.17	0.43
2:B:232:TYR:CE1	4:B:570:HOH:O	2.56	0.43
1:A:297:GLU:HA	1:A:297:GLU:OE1	2.19	0.43
1:A:305:GLU:O	1:A:309:ILE:HG13	2.18	0.43
1:A:509:GLN:N	1:A:510:PRO:CD	2.81	0.43
1:A:399:GLU:HA	1:A:402:TRP:CE3	2.52	0.43
1:A:422:LEU:HD12	1:A:422:LEU:HA	1.79	0.43
2:B:374:LYS:O	2:B:374:LYS:HG2	2.19	0.43
1:A:366:LYS:NZ	4:A:685:HOH:O	2.43	0.43
1:A:64:LYS:CE	1:A:69:THR:HA	2.49	0.43
2:B:79:GLU:OE2	2:B:83:ARG:NE	2.44	0.43
2:B:271:TYR:HA	2:B:272:PRO:HD3	1.71	0.42
2:B:166:LYS:HA	2:B:166:LYS:HE2	2.01	0.42
1:A:246:LEU:HA	1:A:247:PRO:HD2	1.69	0.42
1:A:464:GLN:HG2	1:A:465:LYS:H	1.84	0.42
1:A:164:MET:HG3	1:A:164:MET:O	2.17	0.42
2:B:88:TRP:CZ2	2:B:154:LYS:HD3	2.54	0.42
1:A:172:ARG:NH2	1:A:180:ILE:O	2.53	0.42
1:A:271:TYR:CE1	1:A:314:VAL:HG23	2.55	0.42
2:B:266:TRP:CZ3	2:B:426:TRP:HB3	2.55	0.42
1:A:105:SER:O	1:A:190:GLY:HA2	2.19	0.42
1:A:91:GLN:HG3	1:A:92:LEU:N	2.34	0.42
2:B:104:LYS:HB2	2:B:104:LYS:HE3	1.73	0.42
2:B:428:GLN:HA	2:B:428:GLN:NE2	2.35	0.42
1:A:168:LEU:O	1:A:169:GLU:C	2.57	0.42
1:A:339:TYR:CD1	1:A:375:ILE:HD11	2.55	0.42
1:A:173:LYS:N	1:A:173:LYS:HE3	2.34	0.42
2:B:278:GLN:HE21	2:B:298:GLU:HB2	1.85	0.42

Continued on next page...

Continued from previous page...

Atom-1	Atom-2	Distance(Å)	Clash(Å)
2:B:114:ALA:HB2	2:B:214:LEU:HD22	2.01	0.42
2:B:58:THR:HG23	2:B:76:ASP:O	2.20	0.42
1:A:367:GLN:O	1:A:368:LEU:C	2.58	0.42
1:A:251:SER:HB3	1:A:292:VAL:CG1	2.50	0.41
1:A:173:LYS:CA	1:A:173:LYS:CE	2.92	0.41
2:B:249:LYS:HG3	2:B:252:TRP:CE2	2.55	0.41
2:B:418:ASN:O	2:B:419:THR:C	2.58	0.41
1:A:64:LYS:O	1:A:65:LYS:CB	2.67	0.41
1:A:0:SER:OG	1:A:46:LYS:NZ	2.53	0.41
2:B:243:PRO:O	2:B:245:VAL:HG23	2.20	0.41
2:B:199:ARG:CD	2:B:233:GLU:OE1	2.69	0.41
2:B:50:ILE:CG2	2:B:145:GLN:HG2	2.50	0.41
1:A:334:GLN:HB3	1:A:334:GLN:HE21	1.62	0.41
1:A:65:LYS:NZ	1:A:68:SER:HB3	2.35	0.41
1:A:135:ILE:O	1:A:136:ASN:HB2	2.21	0.41
2:B:10:VAL:HG13	2:B:87:PHE:CD2	2.56	0.41
1:A:319:TYR:CE1	1:A:343:GLN:NE2	2.89	0.41
2:B:17:ASP:CG	2:B:18:GLY:H	2.24	0.41
2:B:419:THR:HA	2:B:420:PRO:HD2	1.94	0.41
1:A:524:GLN:HA	1:A:524:GLN:NE2	2.35	0.41
1:A:270:ILE:HG13	1:A:270:ILE:O	2.20	0.41
2:B:362:THR:CG2	2:B:367:GLN:HG2	2.50	0.41
2:B:81:ASN:HB3	2:B:154:LYS:HD2	2.02	0.41
1:A:557:ARG:HB3	4:A:703:HOH:O	2.19	0.41
2:B:13:LYS:HD2	2:B:85:GLN:H	1.85	0.41
2:B:179:VAL:O	2:B:189:VAL:HA	2.21	0.41
1:A:402:TRP:CD1	1:A:402:TRP:C	2.94	0.41
2:B:65:LYS:HD3	4:B:534:HOH:O	2.20	0.40
2:B:165:THR:HG22	2:B:166:LYS:HE2	2.03	0.40
2:B:332:GLN:HA	2:B:424:LYS:HE3	2.03	0.40
1:A:64:LYS:HE3	1:A:69:THR:HG22	2.03	0.40
1:A:406:TRP:CZ3	1:A:407:GLN:CB	3.04	0.40
2:B:166:LYS:CA	2:B:166:LYS:HE2	2.50	0.40
2:B:268:SER:HB3	2:B:274:ILE:HB	2.02	0.40
1:A:465:LYS:NZ	4:A:702:HOH:O	2.53	0.40
1:A:553:SER:OG	1:A:557:ARG:HD3	2.21	0.40
1:A:412:PRO:HG3	2:B:401:TRP:HZ2	1.85	0.40
1:A:89:GLU:HB3	1:A:92:LEU:HD21	2.03	0.40
1:A:181:TYR:CD1	2:B:138:GLU:HA	2.56	0.40
1:A:330:GLN:NE2	1:A:340:GLN:HE22	2.12	0.40
1:A:10:VAL:HG21	1:A:153:TRP:HH2	1.87	0.40
1:A:129:ALA:HA	1:A:144:TYR:O	2.22	0.40

Continued on next page...

Continued from previous page...

Atom-1	Atom-2	Distance(Å)	Clash(Å)
2:B:235:HIS:HA	2:B:236:PRO:HD3	1.82	0.40

There are no symmetry-related clashes.

5.3 Torsion angles

5.3.1 Protein backbone ⓘ

In the following table, the Percentiles column shows the percent Ramachandran outliers of the chain as a percentile score with respect to all X-ray entries followed by that with respect to entries of similar resolution. The Analysed column shows the number of residues for which the backbone conformation was analysed, and the total number of residues.

Mol	Chain	Analysed	Favoured	Allowed	Outliers	Percentiles	
1	A	557/563 (99%)	492 (88%)	48 (9%)	17 (3%)	7	14
2	B	398/443 (90%)	353 (89%)	35 (9%)	10 (2%)	9	21
All	All	955/1006 (95%)	845 (88%)	83 (9%)	27 (3%)	8	18

All (27) Ramachandran outliers are listed below:

Mol	Chain	Res	Type
1	A	1	PRO
1	A	67	ASP
1	A	90	VAL
1	A	286	THR
1	A	412	PRO
2	B	288	ALA
1	A	64	LYS
1	A	138	GLU
1	A	195	ILE
1	A	196	GLY
1	A	356	ARG
1	A	491	LEU
1	A	543	GLY
2	B	269	GLN
1	A	65	LYS
1	A	220	LYS
1	A	554	ALA
2	B	68	SER
2	B	91	GLN

Continued on next page...

Continued from previous page...

Mol	Chain	Res	Type
2	B	125	ARG
1	A	312	GLU
2	B	65	LYS
2	B	66	LYS
2	B	67	ASP
2	B	346	PHE
1	A	345	PRO
2	B	241	VAL

5.3.2 Protein sidechains ⓘ

In the following table, the Percentiles column shows the percent sidechain outliers of the chain as a percentile score with respect to all X-ray entries followed by that with respect to entries of similar resolution. The Analysed column shows the number of residues for which the sidechain conformation was analysed, and the total number of residues.

Mol	Chain	Analysed	Rotameric	Outliers	Percentiles	
1	A	499/503 (99%)	405 (81%)	94 (19%)	2	6
2	B	368/403 (91%)	316 (86%)	52 (14%)	5	12
All	All	867/906 (96%)	721 (83%)	146 (17%)	3	8

All (146) residues with a non-rotameric sidechain are listed below:

Mol	Chain	Res	Type
1	A	-1	ASN
1	A	5	ILE
1	A	6	GLU
1	A	7	THR
1	A	16	MET
1	A	21	VAL
1	A	24	TRP
1	A	26	LEU
1	A	36	GLU
1	A	39	THR
1	A	63	ILE
1	A	66	LYS
1	A	69	THR
1	A	70	LYS
1	A	72	ARG
1	A	89	GLU
1	A	106	VAL

Continued on next page...

Continued from previous page...

Mol	Chain	Res	Type
1	A	108	VAL
1	A	118	VAL
1	A	123	ASP
1	A	137	ASN
1	A	138	GLU
1	A	139	THR
1	A	143	ARG
1	A	151	GLN
1	A	159	ILE
1	A	161	GLN
1	A	166	LYS
1	A	173	LYS
1	A	193	LEU
1	A	195	ILE
1	A	202	ILE
1	A	205	LEU
1	A	210	LEU
1	A	215	THR
1	A	219	LYS
1	A	220	LYS
1	A	230	MET
1	A	234	LEU
1	A	249	LYS
1	A	260	LEU
1	A	276	VAL
1	A	277	ARG
1	A	279	LEU
1	A	284	ARG
1	A	286	THR
1	A	289	LEU
1	A	291	GLU
1	A	293	ILE
1	A	296	THR
1	A	303	LEU
1	A	305	GLU
1	A	312	GLU
1	A	330	GLN
1	A	334	GLN
1	A	345	PRO
1	A	346	PHE
1	A	350	LYS
1	A	358	ARG

Continued on next page...

Continued from previous page...

Mol	Chain	Res	Type
1	A	362	THR
1	A	368	LEU
1	A	369	THR
1	A	374	LYS
1	A	393	ILE
1	A	394	GLN
1	A	395	LYS
1	A	402	TRP
1	A	404	GLU
1	A	407	GLN
1	A	422	LEU
1	A	425	LEU
1	A	429	LEU
1	A	448	ARG
1	A	449	GLU
1	A	451	LYS
1	A	458	VAL
1	A	463	ARG
1	A	464	GLN
1	A	470	THR
1	A	471	ASP
1	A	472	THR
1	A	479	LEU
1	A	491	LEU
1	A	493	VAL
1	A	496	VAL
1	A	503	LEU
1	A	516	GLU
1	A	523	GLU
1	A	540	LYS
1	A	547	GLN
1	A	550	LYS
1	A	551	LEU
1	A	553	SER
1	A	557	ARG
2	B	6	GLU
2	B	8	VAL
2	B	11	LYS
2	B	16	MET
2	B	17	ASP
2	B	22	LYS
2	B	26	LEU

Continued on next page...

Continued from previous page...

Mol	Chain	Res	Type
2	B	30	LYS
2	B	64	LYS
2	B	66	LYS
2	B	68	SER
2	B	72	ARG
2	B	73	LYS
2	B	80	LEU
2	B	90	VAL
2	B	91	GLN
2	B	111	VAL
2	B	120	LEU
2	B	173	LYS
2	B	175	ASN
2	B	199	ARG
2	B	203	GLU
2	B	205	LEU
2	B	209	LEU
2	B	212	TRP
2	B	214	LEU
2	B	232	TYR
2	B	238	LYS
2	B	246	LEU
2	B	248	GLU
2	B	253	THR
2	B	260	LEU
2	B	261	VAL
2	B	270	ILE
2	B	275	LYS
2	B	279	LEU
2	B	280	CYS
2	B	286	THR
2	B	300	GLU
2	B	310	LEU
2	B	314	VAL
2	B	334	GLN
2	B	336	GLN
2	B	347	LYS
2	B	349	LEU
2	B	369	THR
2	B	374	LYS
2	B	377	THR
2	B	393	ILE

Continued on next page...

Continued from previous page...

Mol	Chain	Res	Type
2	B	394	GLN
2	B	400	THR
2	B	425	LEU

Some sidechains can be flipped to improve hydrogen bonding and reduce clashes. All (32) such sidechains are listed below:

Mol	Chain	Res	Type
1	A	57	ASN
1	A	85	GLN
1	A	147	ASN
1	A	175	ASN
1	A	198	HIS
1	A	258	GLN
1	A	278	GLN
1	A	330	GLN
1	A	332	GLN
1	A	334	GLN
1	A	336	GLN
1	A	428	GLN
1	A	474	ASN
1	A	509	GLN
1	A	519	ASN
1	A	524	GLN
2	B	137	ASN
2	B	145	GLN
2	B	147	ASN
2	B	151	GLN
2	B	161	GLN
2	B	175	ASN
2	B	235	HIS
2	B	258	GLN
2	B	278	GLN
2	B	306	ASN
2	B	336	GLN
2	B	367	GLN
2	B	373	GLN
2	B	394	GLN
2	B	418	ASN
2	B	428	GLN

5.3.3 RNA ⓘ

There are no RNA chains in this entry.

5.4 Non-standard residues in protein, DNA, RNA chains ⓘ

There are no non-standard protein/DNA/RNA residues in this entry.

5.5 Carbohydrates ⓘ

There are no carbohydrates in this entry.

5.6 Ligand geometry ⓘ

1 ligand is modelled in this entry.

In the following table, the Counts columns list the number of bonds (or angles) for which Mogul statistics could be retrieved, the number of bonds (or angles) that are observed in the model and the number of bonds (or angles) that are defined in the chemical component dictionary. The Link column lists molecule types, if any, to which the group is linked. The Z score for a bond length (or angle) is the number of standard deviations the observed value is removed from the expected value. A bond length (or angle) with $|Z| > 2$ is considered an outlier worth inspection. RMSZ is the root-mean-square of all Z scores of the bond lengths (or angles).

Mol	Type	Chain	Res	Link	Bond lengths			Bond angles		
					Counts	RMSZ	# $ Z > 2$	Counts	RMSZ	# $ Z > 2$
3	M14	A	561	-	35,35,35	1.30	4 (11%)	50,50,50	2.19	17 (34%)

In the following table, the Chirals column lists the number of chiral outliers, the number of chiral centers analysed, the number of these observed in the model and the number defined in the chemical component dictionary. Similar counts are reported in the Torsion and Rings columns. '-' means no outliers of that kind were identified.

Mol	Type	Chain	Res	Link	Chirals	Torsions	Rings
3	M14	A	561	-	-	0/21/21/21	0/3/3/3

All (4) bond length outliers are listed below:

Mol	Chain	Res	Type	Atoms	Z	Observed(Å)	Ideal(Å)
3	A	561	M14	S-N23	5.27	1.71	1.60
3	A	561	M14	C16-C27	-2.61	1.37	1.44
3	A	561	M14	C9-C8	2.40	1.42	1.38
3	A	561	M14	O24-S	2.05	1.47	1.43

All (17) bond angle outliers are listed below:

Mol	Chain	Res	Type	Atoms	Z	Observed(°)	Ideal(°)
3	A	561	M14	O24-S-C3	-6.34	98.84	107.39
3	A	561	M14	C7-C8-CL1	-4.27	113.88	119.14
3	A	561	M14	C5-C-N	-4.26	111.99	119.46
3	A	561	M14	C16-C17-C12	-3.92	117.20	119.51
3	A	561	M14	C16-C27-N28	-3.87	167.42	177.96
3	A	561	M14	C9-C8-CL1	3.44	123.39	119.14
3	A	561	M14	C17-C16-C27	-3.23	115.25	119.50
3	A	561	M14	C20-C21-N	-3.08	110.27	115.77
3	A	561	M14	O25-S-N23	2.99	111.91	107.28
3	A	561	M14	C1-C-N	2.98	128.84	121.85
3	A	561	M14	C3-S-N23	-2.88	104.06	108.54
3	A	561	M14	O19-C10-C9	2.49	131.72	119.77
3	A	561	M14	O24-S-N23	2.42	111.03	107.28
3	A	561	M14	C20-O19-C10	2.41	122.28	117.73
3	A	561	M14	C11-C10-C9	-2.37	116.73	120.92
3	A	561	M14	C14-C13-C12	2.08	120.13	117.70
3	A	561	M14	C17-C16-C15	2.05	123.58	119.73

There are no chirality outliers.

There are no torsion outliers.

There are no ring outliers.

5.7 Other polymers ⓘ

There are no such residues in this entry.

5.8 Polymer linkage issues

There are no chain breaks in this entry.

6 Fit of model and data ⓘ

6.1 Protein, DNA and RNA chains ⓘ

In the following table, the column labelled ‘#RSRZ> 2’ contains the number (and percentage) of RSRZ outliers, followed by percent RSRZ outliers for the chain as percentile scores relative to all X-ray entries and entries of similar resolution. The OWAB column contains the minimum, median, 95th percentile and maximum values of the occupancy-weighted average B-factor per residue. The column labelled ‘Q< 0.9’ lists the number of (and percentage) of residues with an average occupancy less than 0.9.

Mol	Chain	Analysed	<RSRZ>	#RSRZ>2	OWAB(Å ²)	Q<0.9
1	A	559/563 (99%)	-0.04	8 (1%) 72 77	24, 46, 68, 91	0
2	B	404/443 (91%)	-0.16	4 (0%) 79 83	24, 44, 82, 96	0
All	All	963/1006 (95%)	-0.09	12 (1%) 75 81	24, 46, 78, 96	0

All (12) RSRZ outliers are listed below:

Mol	Chain	Res	Type	RSRZ
1	A	221	HIS	3.3
2	B	11	LYS	3.0
2	B	362	THR	3.0
1	A	66	LYS	2.9
1	A	195	ILE	2.8
1	A	24	TRP	2.8
1	A	426	TRP	2.7
1	A	402	TRP	2.5
1	A	193	LEU	2.4
2	B	14	PRO	2.1
1	A	199	ARG	2.1
2	B	361	HIS	2.0

6.2 Non-standard residues in protein, DNA, RNA chains ⓘ

There are no non-standard protein/DNA/RNA residues in this entry.

6.3 Carbohydrates ⓘ

There are no carbohydrates in this entry.

6.4 Ligands

In the following table, the Atoms column lists the number of modelled atoms in the group and the number defined in the chemical component dictionary. LLDF column lists the quality of electron density of the group with respect to its neighbouring residues in protein, DNA or RNA chains. The B-factors column lists the minimum, median, 95th percentile and maximum values of B factors of atoms in the group. The column labelled 'Q< 0.9' lists the number of atoms with occupancy less than 0.9.

Mol	Type	Chain	Res	Atoms	RSR	LLDF	B-factors(Å ²)	Q<0.9
3	M14	A	561	33/33	0.18	-0.18	38,48,54,58	0

6.5 Other polymers

There are no such residues in this entry.