



wwPDB X-ray Structure Validation Summary Report

Oct 2, 2014 – 06:37 PM EDT

PDB ID : 4C68
Title : Plasmodium vivax N-myristoyltransferase in complex with a peptidomimetic inhibitor
Authors : Olaleye, T.O.; Brannigan, J.A.; Goncalves, V.; Roberts, S.M.; Leatherbarrow, R.J.; Wilkinson, A.J.; Tate, E.W.
Deposited on : 2013-09-17
Resolution : 1.38 Å(reported)

This is a wwPDB validation summary report for a publicly released PDB entry.
We welcome your comments at validation@mail.wwpdb.org
A user guide is available at <http://wwpdb.org/ValidationPDFNotes.html>

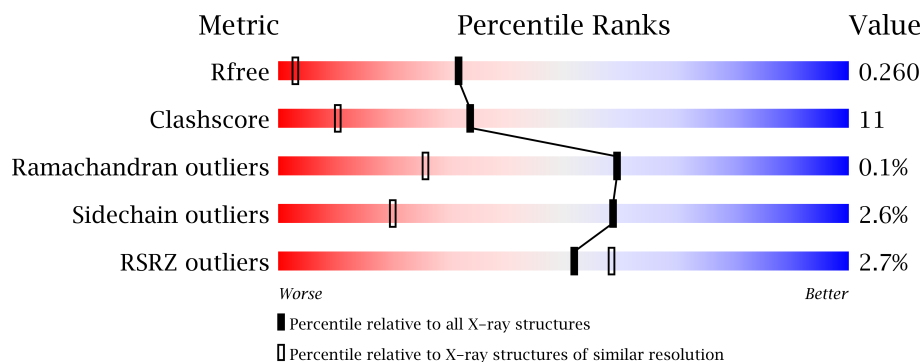
The following versions of software and data (see [references](#)) were used in the production of this report:

MolProbity : 4.02b-467
Mogul : 1.16 November 2013
Xtriage (Phenix) : dev-1439
EDS : stable23828
Percentile statistics : 21963
Refmac : 5.8.0049
CCP4 : 6.3.0 (Settle)
Ideal geometry (proteins) : Engh & Huber (2001)
Ideal geometry (DNA, RNA) : Parkinson et. al. (1996)
Validation Pipeline (wwPDB-VP) : stable23828

1 Overall quality at a glance

The reported resolution of this entry is 1.38 Å.

Percentile scores (ranging between 0-100) for global validation metrics of the entry are shown in the following graphic. The table shows the number of entries on which the scores are based.



Metric	Whole archive (#Entries)	Similar resolution (#Entries, resolution range(Å))
R_{free}	66092	1348 (1.40-1.36)
Clashscore	79885	1515 (1.40-1.36)
Ramachandran outliers	78287	1473 (1.40-1.36)
Sidechain outliers	78261	1472 (1.40-1.36)
RSRZ outliers	66119	1348 (1.40-1.36)

The table below summarises the geometric issues observed across the polymeric chains and their fit to the electron density. The red, orange, yellow and green segments on the lower bar indicate the fraction of residues that contain outliers for ≥ 3 , 2, 1 and 0 types of geometric quality criteria. The upper red bar (where present) indicates the fraction of residues that have poor fit to the electron density.

Mol	Chain	Length	Quality of chain
1	A	384	
1	B	384	
1	C	384	

The following table lists non-polymeric compounds that are outliers for geometric or electron-density-fit criteria:

Mol	Type	Chain	Res	Geometry	Electron density
3	DMS	A	1415	-	X
3	DMS	A	999	X	X
3	DMS	B	1414	-	X
3	DMS	B	999	-	X
3	DMS	C	999	-	X

Continued on next page...

Continued from previous page...

Mol	Type	Chain	Res	Geometry	Electron density
4	EN5	A	1000[A]	-	X
4	EN5	A	1000[B]	-	X

2 Entry composition i

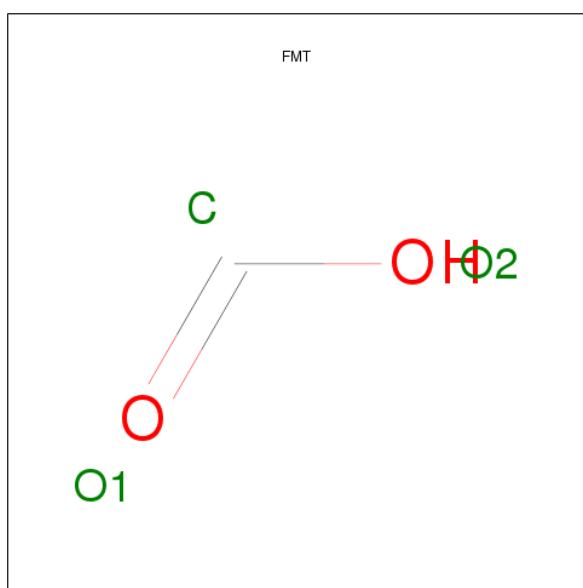
There are 9 unique types of molecules in this entry. The entry contains 11510 atoms, of which 0 are hydrogen and 0 are deuterium.

In the tables below, the ZeroOcc column contains the number of atoms modelled with zero occupancy, the AltConf column contains the number of residues with at least one atom in alternate conformation and the Trace column contains the number of residues modelled with at most 2 atoms.

- Molecule 1 is a protein called GLYCYLPEPTIDE N-TETRADECANOYLTRANSFERASE.

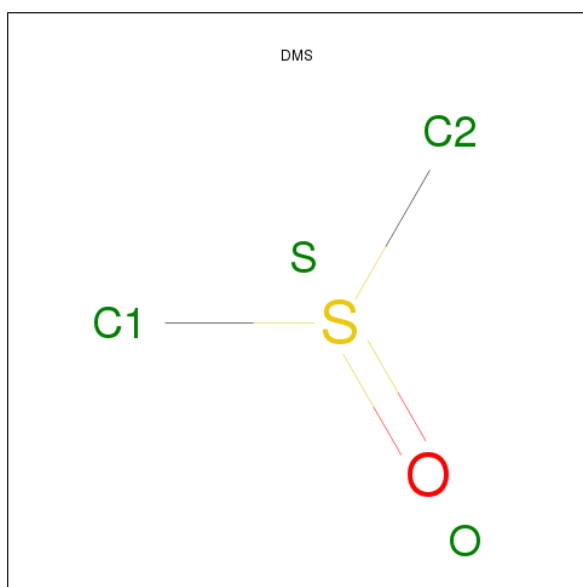
Mol	Chain	Residues	Atoms					ZeroOcc	AltConf	Trace
1	A	384	Total	C	N	O	S	0	32	0
			3375	2199	543	619	14			
1	B	384	Total	C	N	O	S	0	20	0
			3319	2162	534	611	12			
1	C	370	Total	C	N	O	S	0	18	0
			3191	2082	511	587	11			

- Molecule 2 is FORMIC ACID (three-letter code: FMT) (formula: CH₂O₂).



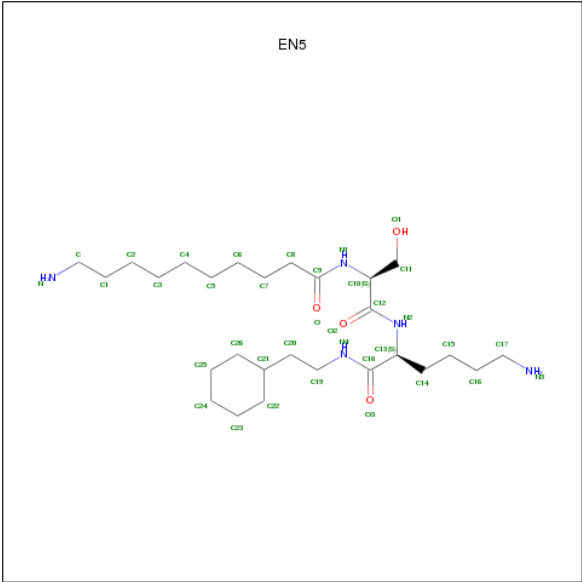
Mol	Chain	Residues	Atoms			ZeroOcc	AltConf
2	A	1	Total	C	O	0	0
			3	1	2		

- Molecule 3 is DIMETHYL SULFOXIDE (three-letter code: DMS) (formula: C₂H₆OS).



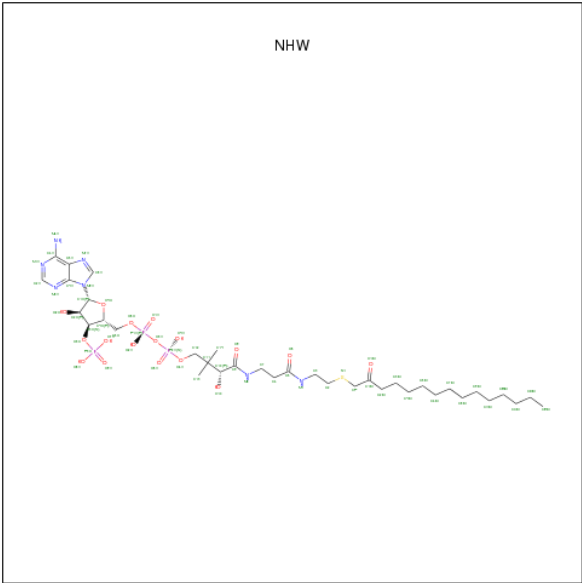
Mol	Chain	Residues	Atoms				ZeroOcc	AltConf
3	A	1	Total	C	O	S	0	0
			4	2	1	1		
3	A	1	Total	C	O	S	0	0
			4	2	1	1		
3	B	1	Total	C	O	S	0	0
			4	2	1	1		
3	B	1	Total	C	O	S	0	0
			4	2	1	1		
3	C	1	Total	C	O	S	0	0
			4	2	1	1		

- Molecule 4 is N-(10-AMINODECANOYL)-L-SERYL-N-(2-CYCLOHEXYLETHYL)-L-LY SINAMIDE (three-letter code: EN5) (formula: C₂₇H₅₃N₅O₄).



Mol	Chain	Residues	Atoms				ZeroOcc	AltConf
4	A	1	Total	C	N	O	0	1
			72	54	10	8		
4	B	1	Total	C	N	O	0	0
			36	27	5	4		

- Molecule 5 is 2-OXOPENTADECYL-COA (three-letter code: NHW) (formula: $C_{36}H_{64}N_7O_{17}P_3S$).



Mol	Chain	Residues	Atoms						ZeroOcc	AltConf
5	A	1	Total	C	N	O	P	S	0	0
			64	36	7	17	3	1		
5	B	1	Total	C	N	O	P	S	0	0
			64	36	7	17	3	1		

Continued on next page...

Continued from previous page...

Mol	Chain	Residues	Atoms					ZeroOcc	AltConf
5	C	1	Total	C	N	O	P	S	
			64	36	7	17	3	1	
								0	0

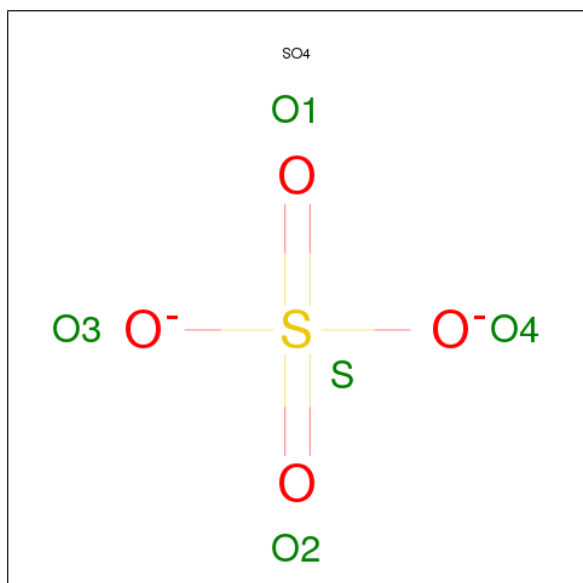
- Molecule 6 is CHLORIDE ION (three-letter code: CL) (formula: Cl).

Mol	Chain	Residues	Atoms		ZeroOcc	AltConf
6	B	1	Total	Cl		
			1	1	0	0
6	A	1	Total	Cl		
			1	1	0	0
6	C	3	Total	Cl		
			3	3	0	0

- Molecule 7 is MAGNESIUM ION (three-letter code: MG) (formula: Mg).

Mol	Chain	Residues	Atoms		ZeroOcc	AltConf
7	B	1	Total	Mg		
			1	1	0	0
7	A	1	Total	Mg		
			1	1	0	0
7	C	1	Total	Mg		
			1	1	0	0

- Molecule 8 is SULFATE ION (three-letter code: SO4) (formula: O₄S).



Mol	Chain	Residues	Atoms			ZeroOcc	AltConf
8	A	1	Total	O	S	0	0
			5	4	1		

- Molecule 9 is water.

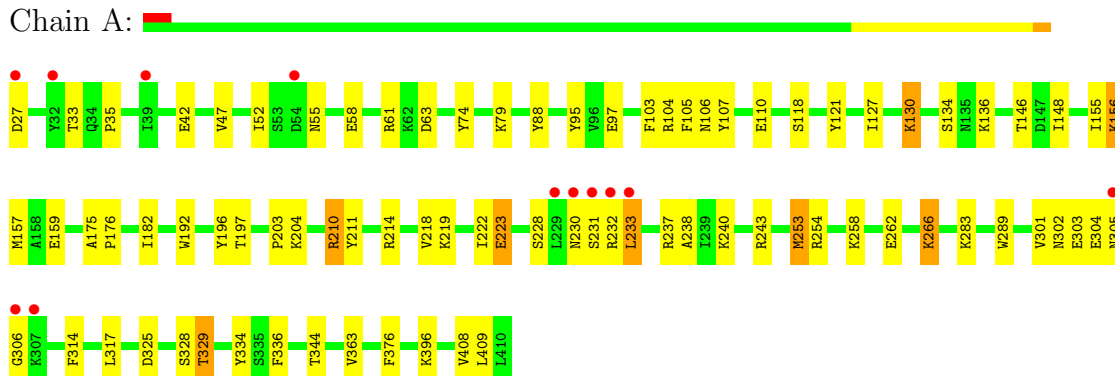
Mol	Chain	Residues	Atoms		ZeroOcc	AltConf
9	A	479	Total	O	0	0
			479	479		
9	B	453	Total	O	0	0
			453	453		
9	C	357	Total	O	0	0
			357	357		

3 Residue-property plots

These plots are drawn for all protein, RNA and DNA chains in the entry. The first graphic for a chain summarises the proportions of errors displayed in the second graphic. The second graphic shows the sequence view annotated by issues in geometry and electron density. Residues are color-coded according to the number of geometric quality criteria for which they contain at least one outlier: green = 0, yellow = 1, orange = 2 and red = 3 or more. A red dot above a residue indicates a poor fit to the electron density ($RSRZ > 2$). Stretches of 2 or more consecutive residues without any outlier are shown as a green connector. Residues present in the sample, but not in the model, are shown in grey.

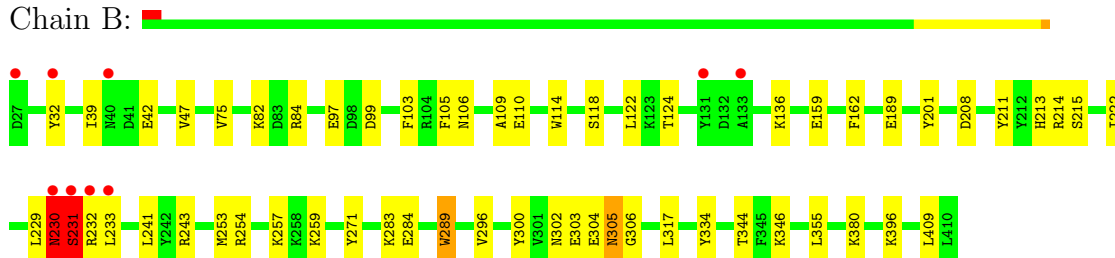
• Molecule 1: GLYCYLPEPTIDE N-TETRADECANOYLTRANSFERASE

Chain A:



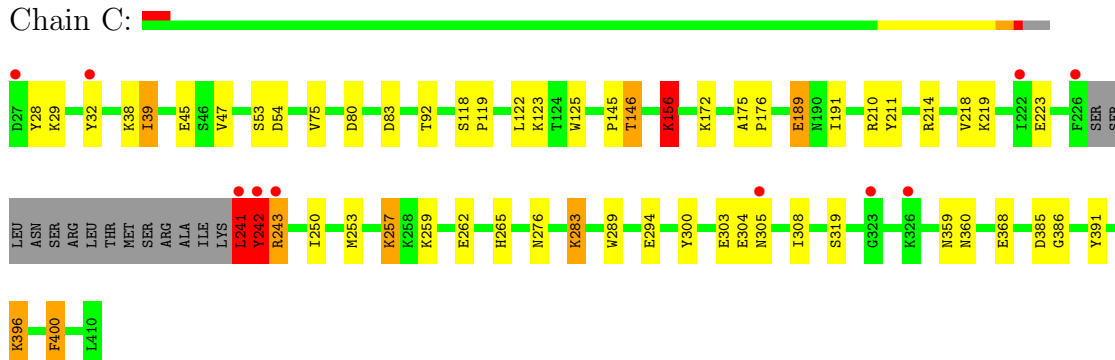
• Molecule 1: GLYCYLPEPTIDE N-TETRADECANOYLTRANSFERASE

Chain B:



• Molecule 1: GLYCYLPEPTIDE N-TETRADECANOYLTRANSFERASE

Chain C:



4 Data and refinement statistics

Property	Value	Source
Space group	P 21 21 21	Depositor
Cell constants a, b, c, α , β , γ	57.33Å 121.43Å 178.74Å 90.00° 90.00° 90.00°	Depositor
Resolution (Å)	41.97 – 1.38 41.94 – 1.38	Depositor EDS
% Data completeness (in resolution range)	99.8 (41.97-1.38) 99.8 (41.94-1.38)	Depositor EDS
R_{merge}	0.11	Depositor
R_{sym}	(Not available)	Depositor
$\langle I/\sigma(I) \rangle$ ¹	2.08 (at 1.38Å)	Xtriage
Refinement program	REFMAC 5.7.0029	Depositor
R, R_{free}	0.220 , 0.260 0.220 , 0.260	Depositor DCC
R_{free} test set	12849 reflections (5.27%)	DCC
Wilson B-factor (Å ²)	11.6	Xtriage
Anisotropy	0.252	Xtriage
Bulk solvent k_{sol} (e/Å ³), B_{sol} (Å ²)	0.33 , 27.5	EDS
Estimated twinning fraction	No twinning to report.	Xtriage
L-test for twinning	$\langle L \rangle = 0.36$, $\langle L^2 \rangle = 0.18$	Xtriage
Outliers	0 of 256483 reflections	Xtriage
F_o, F_c correlation	0.94	EDS
Total number of atoms	11510	wwPDB-VP
Average B, all atoms (Å ²)	13.0	wwPDB-VP

Xtriage's analysis on translational NCS is as follows: *The largest off-origin peak in the Patterson function is 3.34% of the height of the origin peak. No significant pseudotranslation is detected.*

¹Intensities estimated from amplitudes.

5 Model quality i

5.1 Standard geometry i

Bond lengths and bond angles in the following residue types are not validated in this section: MG, CL, FMT, NHW, DMS, SO4, EN5

The Z score for a bond length (or angle) is the number of standard deviations the observed value is removed from the expected value. A bond length (or angle) with $|Z| > 5$ is considered an outlier worth inspection. RMSZ is the root-mean-square of all Z scores of the bond lengths (or angles).

Mol	Chain	Bond lengths		Bond angles	
		RMSZ	$\# Z > 5$	RMSZ	$\# Z > 5$
1	A	1.26	4/3531 (0.1%)	1.29	19/4770 (0.4%)
1	B	1.27	7/3433 (0.2%)	1.27	6/4642 (0.1%)
1	C	1.25	6/3307 (0.2%)	1.29	21/4477 (0.5%)
All	All	1.26	17/10271 (0.2%)	1.28	46/13889 (0.3%)

Chiral center outliers are detected by calculating the chiral volume of a chiral center and verifying if the center is modelled as a planar moiety or with the opposite hand. A planarity outlier is detected by checking planarity of atoms in a peptide group, atoms in a mainchain group or atoms of a sidechain that are expected to be planar.

Mol	Chain	#Chirality outliers	#Planarity outliers
1	B	0	3
1	C	0	4
All	All	0	7

The worst 5 of 17 bond length outliers are listed below:

Mol	Chain	Res	Type	Atoms	Z	Observed(Å)	Ideal(Å)
1	C	243[A]	ARG	CA-C	7.61	1.72	1.52
1	C	243[B]	ARG	CA-C	7.61	1.72	1.52
1	B	215	SER	CB-OG	-6.75	1.33	1.42
1	C	300	TYR	CE1-CZ	-6.57	1.30	1.38
1	B	162	PHE	CG-CD2	5.82	1.47	1.38

The worst 5 of 46 bond angle outliers are listed below:

Mol	Chain	Res	Type	Atoms	Z	Observed(°)	Ideal(°)
1	C	243[A]	ARG	N-CA-CB	-10.18	92.27	110.60
1	C	243[B]	ARG	N-CA-CB	-10.18	92.27	110.60
1	B	283[A]	LYS	CA-C-N	-8.20	99.16	117.20

Continued on next page...

Continued from previous page...

Mol	Chain	Res	Type	Atoms	Z	Observed(°)	Ideal(°)
1	B	283[B]	LYS	CA-C-N	-8.20	99.16	117.20
1	C	241	LEU	CA-CB-CG	7.91	133.50	115.30

There are no chirality outliers.

5 of 7 planarity outliers are listed below:

Mol	Chain	Res	Type	Group
1	B	230	ASN	Peptide
1	B	231	SER	Mainchain,Peptide
1	C	242	TYR	Peptide
1	C	243[A]	ARG	Mainchain
1	C	243[B]	ARG	Mainchain

5.2 Close contacts ⓘ

In the following table, the Non-H and H(model) columns list the number of non-hydrogen atoms and hydrogen atoms in the chain respectively. The H(added) column lists the number of hydrogens added by MolProbity. The Clashes column lists the number of clashes within the asymmetric unit, and the number in parentheses is this value normalized per 1000 atoms of the molecule in the chain. The Symm-Clashes column gives symmetry related clashes, in the same way as for the Clashes column.

Mol	Chain	Non-H	H(model)	H(added)	Clashes	Symm-Clashes
1	A	3375	0	3417	65	0
1	B	3319	0	3326	83	0
1	C	3191	0	3182	56	0
2	A	3	0	2	2	0
3	A	8	0	12	19	0
3	B	8	0	12	16	0
3	C	4	0	6	0	0
4	A	72	0	0	16	0
4	B	36	0	0	1	0
5	A	64	0	60	0	0
5	B	64	0	60	0	0
5	C	64	0	60	0	0
6	A	1	0	0	0	0
6	B	1	0	0	0	0
6	C	3	0	0	0	0
7	A	1	0	0	0	0
7	B	1	0	0	0	0
7	C	1	0	0	0	0

Continued on next page...

Continued from previous page...

Mol	Chain	Non-H	H(model)	H(added)	Clashes	Symm-Clashes
8	A	5	0	0	0	0
9	A	479	0	0	11	0
9	B	453	0	0	11	0
9	C	357	0	0	3	0
All	All	11510	0	10137	225	0

Clashscore is defined as the number of clashes calculated for the entry per 1000 atoms (including hydrogens) of the entry. The overall clashscore for this entry is 11.

The worst 5 of 225 close contacts within the same asymmetric unit are listed below.

Atom-1	Atom-2	Distance(Å)	Clash(Å)
1:B:257[B]:LYS:HD2	1:B:259[B]:LYS:NZ	1.27	1.42
1:B:75[A]:VAL:HG22	9:B:2107:HOH:O	1.32	1.29
1:B:257[B]:LYS:CD	1:B:259[B]:LYS:HZ2	1.49	1.25
1:B:257[B]:LYS:CD	1:B:259[B]:LYS:NZ	2.01	1.23
1:B:231:SER:N	1:B:233:LEU:H	1.39	1.19

There are no symmetry-related clashes.

5.3 Torsion angles

5.3.1 Protein backbone ⓘ

In the following table, the Percentiles column shows the percent Ramachandran outliers of the chain as a percentile score with respect to all X-ray entries followed by that with respect to entries of similar resolution.

The Analysed column shows the number of residues for which the backbone conformation was analysed, and the total number of residues.

Mol	Chain	Analysed	Favoured	Allowed	Outliers	Percentiles	
1	A	413/384 (108%)	401 (97%)	12 (3%)	0	100	100
1	B	401/384 (104%)	390 (97%)	10 (2%)	1 (0%)	56	24
1	C	384/384 (100%)	372 (97%)	12 (3%)	0	100	100
All	All	1198/1152 (104%)	1163 (97%)	34 (3%)	1 (0%)	59	26

All (1) Ramachandran outliers are listed below:

Mol	Chain	Res	Type
1	B	230	ASN

5.3.2 Protein sidechains ⓘ

In the following table, the Percentiles column shows the percent sidechain outliers of the chain as a percentile score with respect to all X-ray entries followed by that with respect to entries of similar resolution. The Analysed column shows the number of residues for which the sidechain conformation was analysed, and the total number of residues.

Mol	Chain	Analysed	Rotameric	Outliers	Percentiles	
1	A	382/350 (109%)	370 (97%)	12 (3%)	52	14
1	B	370/350 (106%)	362 (98%)	8 (2%)	64	27
1	C	355/350 (101%)	339 (96%)	16 (4%)	38	6
All	All	1107/1050 (105%)	1071 (97%)	36 (3%)	59	13

5 of 36 residues with a non-rotameric sidechain are listed below:

Mol	Chain	Res	Type
1	B	136[B]	LYS
1	C	39	ILE
1	C	294	GLU
1	B	230	ASN
1	C	53	SER

Some sidechains can be flipped to improve hydrogen bonding and reduce clashes. 5 of 15 such sidechains are listed below:

Mol	Chain	Res	Type
1	B	34	GLN
1	B	151	HIS
1	C	106	ASN
1	A	350	GLN
1	C	34	GLN

5.3.3 RNA ⓘ

There are no RNA chains in this entry.

5.4 Non-standard residues in protein, DNA, RNA chains ⓘ

There are no non-standard protein/DNA/RNA residues in this entry.

5.5 Carbohydrates

There are no carbohydrates in this entry.

5.6 Ligand geometry

Of 21 ligands modelled in this entry, 8 are monoatomic - leaving 13 for Mogul analysis.

In the following table, the Counts columns list the number of bonds (or angles) for which Mogul statistics could be retrieved, the number of bonds (or angles) that are observed in the model and the number of bonds (or angles) that are defined in the chemical component dictionary. The Link column lists molecule types, if any, to which the group is linked. The Z score for a bond length (or angle) is the number of standard deviations the observed value is removed from the expected value. A bond length (or angle) with $|Z| > 2$ is considered an outlier worth inspection. RMSZ is the root-mean-square of all Z scores of the bond lengths (or angles).

Mol	Type	Chain	Res	Link	Bond lengths			Bond angles		
					Counts	RMSZ	# $ Z > 2$	Counts	RMSZ	# $ Z > 2$
4	EN5	A	1000[A]	-	36,36,36	1.14	3 (8%)	42,42,42	1.16	3 (7%)
4	EN5	A	1000[B]	-	36,36,36	1.14	3 (8%)	42,42,42	1.18	3 (7%)
5	NHW	A	1411	7	66,66,66	1.70	9 (13%)	92,92,92	2.04	23 (25%)
8	SO4	A	1414	-	4,4,4	0.51	0	6,6,6	1.29	1 (16%)
3	DMS	A	1415	-	3,3,3	0.56	0	3,3,3	1.51	1 (33%)
2	FMT	A	997	-	2,2,2	1.76	1 (50%)	1,1,1	0.32	0
3	DMS	A	999	-	3,3,3	0.37	0	3,3,3	2.75	3 (100%)
4	EN5	B	1000	-	36,36,36	0.94	1 (2%)	42,42,42	1.50	9 (21%)
5	NHW	B	1411	-	66,66,66	1.98	11 (16%)	92,92,92	1.63	14 (15%)
3	DMS	B	1414	-	3,3,3	0.71	0	3,3,3	2.38	2 (66%)
3	DMS	B	999	-	3,3,3	0.89	0	3,3,3	1.93	1 (33%)
5	NHW	C	1411	7	66,66,66	1.92	12 (18%)	92,92,92	1.80	20 (21%)
3	DMS	C	999	-	3,3,3	0.43	0	3,3,3	1.16	0

In the following table, the Chirals column lists the number of chiral outliers, the number of chiral centers analysed, the number of these observed in the model and the number defined in the chemical component dictionary. Similar counts are reported in the Torsion and Rings columns. '-' means no outliers of that kind were identified.

Mol	Type	Chain	Res	Link	Chirals	Torsions	Rings
4	EN5	A	1000[A]	-	-	0/39/47/47	0/1/1/1
4	EN5	A	1000[B]	-	-	0/39/47/47	0/1/1/1
5	NHW	A	1411	7	-	0/65/81/81	0/3/3/3
8	SO4	A	1414	-	-	0/0/0/0	0/0/0/0

Continued on next page...

Continued from previous page...

Mol	Type	Chain	Res	Link	Chirals	Torsions	Rings
3	DMS	A	1415	-	-	0/0/0/0	0/0/0/0
2	FMT	A	997	-	-	0/0/0/0	0/0/0/0
3	DMS	A	999	-	-	0/0/0/0	0/0/0/0
4	EN5	B	1000	-	-	0/39/47/47	0/1/1/1
5	NHW	B	1411	-	-	0/65/81/81	0/3/3/3
3	DMS	B	1414	-	-	0/0/0/0	0/0/0/0
3	DMS	B	999	-	-	0/0/0/0	0/0/0/0
5	NHW	C	1411	7	-	0/65/81/81	0/3/3/3
3	DMS	C	999	-	-	0/0/0/0	0/0/0/0

The worst 5 of 40 bond length outliers are listed below:

Mol	Chain	Res	Type	Atoms	Z	Observed(Å)	Ideal(Å)
5	B	1411	NHW	C11-C10	-10.11	1.49	1.55
5	A	1411	NHW	C11-C10	7.41	1.60	1.55
5	C	1411	NHW	P1A-O3A	5.83	1.70	1.59
5	C	1411	NHW	O4X-C4X	5.58	1.58	1.45
5	C	1411	NHW	C11-C10	-5.55	1.52	1.55

The worst 5 of 80 bond angle outliers are listed below:

Mol	Chain	Res	Type	Atoms	Z	Observed(°)	Ideal(°)
5	A	1411	NHW	C5A-C4A-N3A	-7.31	118.85	125.98
5	C	1411	NHW	C5A-C4A-N3A	-7.13	119.03	125.98
5	A	1411	NHW	C13-C11-C12	-6.43	99.82	108.71
5	C	1411	NHW	N3A-C4A-N9A	5.89	135.49	125.39
5	B	1411	NHW	C8A-N9A-C4A	5.53	111.45	106.96

There are no chirality outliers.

There are no torsion outliers.

There are no ring outliers.

5.7 Other polymers ⓘ

There are no such residues in this entry.

5.8 Polymer linkage issues

There are no chain breaks in this entry.

6 Fit of model and data

6.1 Protein, DNA and RNA chains

In the following table, the column labelled ‘#RSRZ> 2’ contains the number (and percentage) of RSRZ outliers, followed by percent RSRZ outliers for the chain as percentile scores relative to all X-ray entries and entries of similar resolution. The OWAB column contains the minimum, median, 95th percentile and maximum values of the occupancy-weighted average B-factor per residue. The column labelled ‘Q< 0.9’ lists the number of (and percentage) of residues with an average occupancy less than 0.9.

Mol	Chain	Analysed	<RSRZ>	#RSRZ>2	OWAB(Å ²)	Q<0.9
1	A	384/384 (100%)	-0.00	12 (3%) 47 52	6, 11, 20, 57	12 (3%)
1	B	384/384 (100%)	-0.15	9 (2%) 57 63	5, 10, 21, 60	11 (2%)
1	C	370/384 (96%)	0.08	10 (2%) 52 58	7, 12, 26, 66	14 (3%)
All	All	1138/1152 (98%)	-0.02	31 (2%) 52 58	5, 11, 23, 66	37 (3%)

The worst 5 of 31 RSRZ outliers are listed below:

Mol	Chain	Res	Type	RSRZ
1	C	242	TYR	13.6
1	C	241	LEU	9.8
1	A	231	SER	8.3
1	B	231	SER	5.4
1	A	39	ILE	5.2

6.2 Non-standard residues in protein, DNA, RNA chains

There are no non-standard protein/DNA/RNA residues in this entry.

6.3 Carbohydrates

There are no carbohydrates in this entry.

6.4 Ligands

In the following table, the Atoms column lists the number of modelled atoms in the group and the number defined in the chemical component dictionary. LLDF column lists the quality of electron density of the group with respect to its neighbouring residues in protein, DNA or RNA chains. The B-factors column lists the minimum, median, 95th percentile and maximum values of B factors

of atoms in the group. The column labelled 'Q< 0.9' lists the number of atoms with occupancy less than 0.9.

Mol	Type	Chain	Res	Atoms	RSR	LLDF	B-factors(Å ²)	Q<0.9
3	DMS	C	999	4/4	0.37	19.65	27,28,31,34	4
3	DMS	A	1415	4/4	0.26	11.70	23,24,25,27	4
3	DMS	A	999	4/4	0.30	11.66	15,17,21,24	4
3	DMS	B	999	4/4	0.20	9.74	20,20,24,25	1
3	DMS	B	1414	4/4	0.21	7.40	18,20,21,25	4
4	EN5	A	1000[B]	36/36	0.13	2.30	16,19,22,23	36
4	EN5	A	1000[A]	36/36	0.13	2.27	14,16,18,19	36
4	EN5	B	1000	36/36	0.10	1.42	12,15,22,22	0
8	SO4	A	1414	5/5	0.10	1.20	31,36,38,43	0
6	CL	C	1414	1/1	0.20	0.25	54,54,54,54	0
6	CL	C	1413	1/1	0.11	0.13	41,41,41,41	0
2	FMT	A	997	3/3	0.08	-0.26	16,16,17,18	0
7	MG	C	1415	1/1	0.06	-0.41	21,21,21,21	0
5	NHW	A	1411	64/64	0.07	-0.43	6,8,11,14	0
5	NHW	C	1411	64/64	0.06	-0.50	6,10,13,16	0
5	NHW	B	1411	64/64	0.05	-0.52	5,8,11,14	0
7	MG	A	1413	1/1	0.06	-1.28	21,21,21,21	0
6	CL	B	1412	1/1	0.05	-1.75	9,9,9,9	0
7	MG	B	1413	1/1	0.03	-2.49	21,21,21,21	0
6	CL	C	1412	1/1	0.03	-4.78	10,10,10,10	0
6	CL	A	1412	1/1	0.02	-6.54	8,8,8,8	0

6.5 Other polymers ⓘ

There are no such residues in this entry.