



Full wwPDB X-ray Structure Validation Report

Feb 27, 2014 – 01:51 PM GMT

PDB ID : 1C7F
Title : D95E OXIDIZED FLAVODOXIN MUTANT FROM D. VULGARIS
Authors : McCarthy, A.; Walsh, M.; Higgins, T.; D'Arcy, D.
Deposited on : 2000-02-11
Resolution : 2.00 Å(reported)

This is a full wwPDB validation report for a publicly released PDB entry.
We welcome your comments at validation@mail.wwpdb.org
A user guide is available at <http://wwpdb.org/ValidationPDFNotes.html>

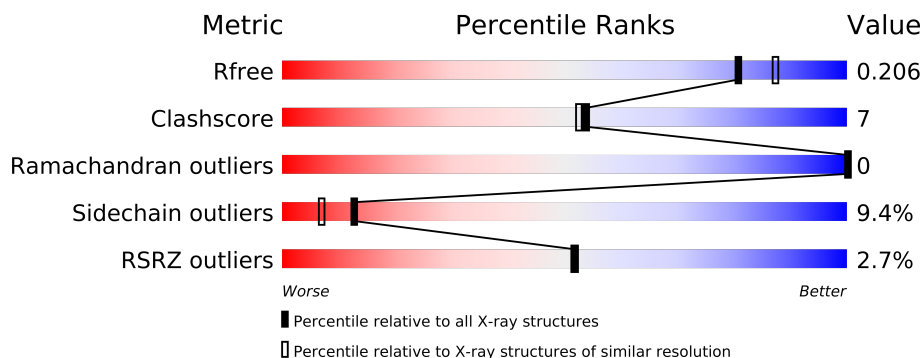
The following versions of software and data (see [references](#)) were used in the production of this report:

MolProbity : 4.02b-467
Mogul : 1.15 2013
Xtriage (Phenix) : dev-1323
EDS : stable22639
Percentile statistics : 21963
Refmac : 5.8.0049
CCP4 : 6.3.0 (Settle)
Ideal geometry (proteins) : Engh & Huber (2001)
Ideal geometry (DNA, RNA) : Parkinson et. al. (1996)
Validation Pipeline (wwPDB-VP) : stable22683

1 Overall quality at a glance

The reported resolution of this entry is 2.00 Å.

Percentile scores (ranging between 0-100) for global validation metrics of the entry are shown in the following graphic. The table shows the number of entries on which the scores are based.



Metric	Whole archive (#Entries)	Similar resolution (#Entries, resolution range(Å))
R_{free}	66092	4888 (2.00-2.00)
Clashscore	79885	6188 (2.00-2.00)
Ramachandran outliers	78287	6102 (2.00-2.00)
Sidechain outliers	78261	6100 (2.00-2.00)
RSRZ outliers	66119	4890 (2.00-2.00)

The table below summarises the geometric issues observed across the polymeric chains and their fit to the electron density. The red, orange, yellow and green segments on the lower bar indicate the fraction of residues that contain outliers for ≥ 3 , 2, 1 and 0 types of geometric quality criteria. The upper red bar (where present) indicates the fraction of residues that have poor fit to the electron density.

Mol	Chain	Length	Quality of chain
1	A	147	
1	B	147	

2 Entry composition i

There are 3 unique types of molecules in this entry. The entry contains 2420 atoms, of which 0 are hydrogen and 0 are deuterium.

In the tables below, the ZeroOcc column contains the number of atoms modelled with zero occupancy, the AltConf column contains the number of residues with at least one atom in alternate conformation and the Trace column contains the number of residues modelled with at most 2 atoms.

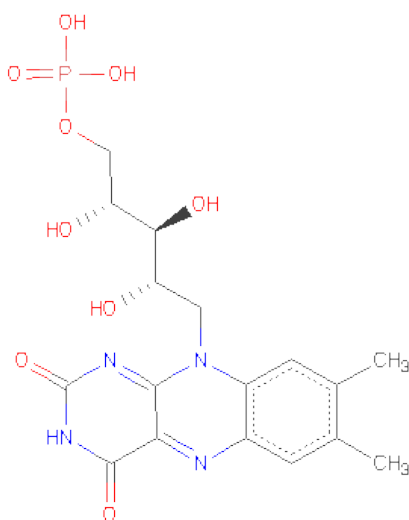
- Molecule 1 is a protein called FLAVODOXIN.

Mol	Chain	Residues	Atoms					ZeroOcc	AltConf	Trace
1	A	147	Total	C	N	O	S	0	0	0
			1105	687	181	233	4			
1	B	147	Total	C	N	O	S	0	0	0
			1105	687	181	233	4			

There are 2 discrepancies between the modelled and reference sequences:

Chain	Residue	Modelled	Actual	Comment	Reference
A	95	GLU	ASP	ENGINEERED	UNP P00323
B	95	GLU	ASP	ENGINEERED	UNP P00323

- Molecule 2 is FLAVIN MONONUCLEOTIDE (three-letter code: FMN) (formula: C₁₇H₂₁N₄O₉P).



Mol	Chain	Residues	Atoms					ZeroOcc	AltConf
2	A	1	Total	C	N	O	P	0	0
			31	17	4	9	1		

Continued on next page...

Continued from previous page...

Mol	Chain	Residues	Atoms					ZeroOcc	AltConf
2	B	1	Total	C	N	O	P	0	0
			31	17	4	9	1		

- Molecule 3 is water.

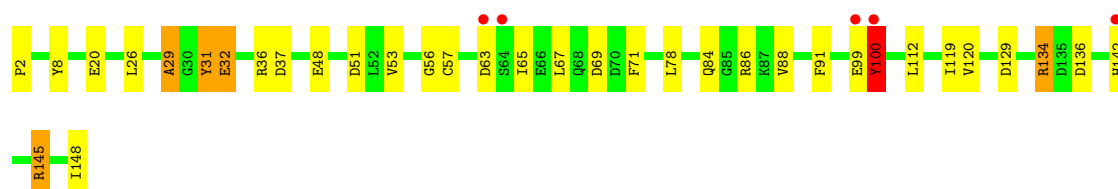
Mol	Chain	Residues	Atoms		ZeroOcc	AltConf
3	A	66	Total	O	0	0
			66	66		
3	B	82	Total	O	0	0
			82	82		

3 Residue-property plots

These plots are drawn for all protein, RNA and DNA chains in the entry. The first graphic for a chain summarises the proportions of errors displayed in the second graphic. The second graphic shows the sequence view annotated by issues in geometry and electron density. Residues are color-coded according to the number of geometric quality criteria for which they contain at least one outlier: green = 0, yellow = 1, orange = 2 and red = 3 or more. A red dot above a residue indicates a poor fit to the electron density ($RSRZ > 2$). Stretches of 2 or more consecutive residues without any outlier are shown as a green connector. Residues present in the sample, but not in the model, are shown in grey.

- Molecule 1: FLAVODOXIN

Chain A: 



- Molecule 1: FLAVODOXIN

Chain B: 



4 Data and refinement statistics

Property	Value	Source
Space group	C 1 2 1	Depositor
Cell constants a, b, c, α , β , γ	94.31Å 61.93Å 77.42Å 90.00° 127.16° 90.00°	Depositor
Resolution (Å)	19.80 – 2.00 19.90 – 2.00	Depositor EDS
% Data completeness (in resolution range)	100.0 (19.80-2.00) 93.2 (19.90-2.00)	Depositor EDS
R_{merge}	0.06	Depositor
R_{sym}	(Not available)	Depositor
$\langle I/\sigma(I) \rangle$ ¹	4.93 (at 2.01Å)	Xtriage
Refinement program	REFMAC	Depositor
R, R_{free}	0.183 , 0.240 0.164 , 0.206	Depositor DCC
R_{free} test set	727 reflections (3.34%)	DCC
Wilson B-factor (Å ²)	23.2	Xtriage
Anisotropy	0.237	Xtriage
Bulk solvent k_{sol} (e/Å ³), B_{sol} (Å ²)	0.37 , 48.8	EDS
Estimated twinning fraction	0.016 for h,-k,-h-l	Xtriage
L-test for twinning	$\langle L \rangle = 0.50$, $\langle L^2 \rangle = 0.33$	Xtriage
Outliers	1 of 22500 reflections (0.004%)	Xtriage
F_o, F_c correlation	0.96	EDS
Total number of atoms	2420	wwPDB-VP
Average B, all atoms (Å ²)	31.0	wwPDB-VP

Xtriage's analysis on translational NCS is as follows: *The largest off-origin peak in the Patterson function is 7.66% of the height of the origin peak. No significant pseudotranslation is detected.*

¹Intensities estimated from amplitudes.

5 Model quality

5.1 Standard geometry

Bond lengths and bond angles in the following residue types are not validated in this section: FMN

The Z score for a bond length (or angle) is the number of standard deviations the observed value is removed from the expected value. A bond length (or angle) with $|Z| > 5$ is considered an outlier worth inspection. RMSZ is the root-mean-square of all Z scores of the bond lengths (or angles).

Mol	Chain	Bond lengths		Bond angles	
		RMSZ	$\# Z > 5$	RMSZ	$\# Z > 5$
1	A	0.77	1/1123 (0.1%)	1.63	22/1519 (1.4%)
1	B	0.73	0/1123	1.82	27/1519 (1.8%)
All	All	0.75	1/2246 (0.0%)	1.73	49/3038 (1.6%)

Chiral center outliers are detected by calculating the chiral volume of a chiral center and verifying if the center is modelled as a planar moiety or with the opposite hand. A planarity outlier is detected by checking planarity of atoms in a peptide group, atoms in a mainchain group or atoms of a sidechain that are expected to be planar.

Mol	Chain	#Chirality outliers	#Planarity outliers
1	A	0	2
1	B	0	4
All	All	0	6

All (1) bond length outliers are listed below:

Mol	Chain	Res	Type	Atoms	Z	Observed(Å)	Ideal(Å)
1	A	57	CYS	CB-SG	-5.51	1.72	1.81

All (49) bond angle outliers are listed below:

Mol	Chain	Res	Type	Atoms	Z	Observed(°)	Ideal(°)
1	B	69	ASP	CB-CG-OD2	29.06	144.46	118.30
1	A	69	ASP	CB-CG-OD2	16.61	133.25	118.30
1	B	69	ASP	OD1-CG-OD2	-15.29	94.25	123.30
1	A	37	ASP	CB-CG-OD1	10.97	128.17	118.30
1	A	48	GLU	OE1-CD-OE2	-9.70	111.67	123.30
1	A	51	ASP	CB-CG-OD2	9.22	126.60	118.30
1	B	134	ARG	CD-NE-CZ	9.19	136.46	123.60
1	B	145	ARG	NE-CZ-NH2	9.16	124.88	120.30

Continued on next page...

Continued from previous page...

Mol	Chain	Res	Type	Atoms	Z	Observed(°)	Ideal(°)
1	A	8	TYR	CB-CG-CD2	-8.64	115.82	121.00
1	B	125	ARG	NE-CZ-NH1	8.40	124.50	120.30
1	B	69	ASP	CA-CB-CG	8.13	131.28	113.40
1	A	37	ASP	CB-CG-OD2	-7.57	111.48	118.30
1	A	134	ARG	CD-NE-CZ	7.46	134.04	123.60
1	B	41	VAL	N-CA-CB	-7.33	95.38	111.50
1	B	134	ARG	NE-CZ-NH1	7.23	123.92	120.30
1	B	125	ARG	NE-CZ-NH2	-7.23	116.69	120.30
1	B	89	ALA	N-CA-CB	7.21	120.20	110.10
1	B	131	ARG	NE-CZ-NH1	6.98	123.79	120.30
1	B	120	VAL	CA-CB-CG1	-6.96	100.47	110.90
1	B	37	ASP	CB-CG-OD1	6.72	124.35	118.30
1	A	8	TYR	CB-CG-CD1	6.57	124.94	121.00
1	B	57	CYS	N-CA-CB	-6.39	99.11	110.60
1	B	76	ASP	CB-CG-OD1	6.38	124.05	118.30
1	A	57	CYS	N-CA-CB	-6.32	99.23	110.60
1	A	36	ARG	NE-CZ-NH1	6.26	123.43	120.30
1	B	37	ASP	CB-CG-OD2	-6.14	112.77	118.30
1	B	32	GLU	N-CA-CB	6.12	121.62	110.60
1	A	69	ASP	CB-CG-OD1	-5.88	113.00	118.30
1	B	52	LEU	CA-CB-CG	5.80	128.64	115.30
1	B	16	GLU	OE1-CD-OE2	-5.77	116.38	123.30
1	A	32	GLU	N-CA-CB	5.71	120.89	110.60
1	B	70	ASP	CB-CG-OD1	-5.70	113.17	118.30
1	A	86	ARG	NE-CZ-NH1	5.69	123.14	120.30
1	B	24	ARG	CD-NE-CZ	5.69	131.56	123.60
1	B	131	ARG	NE-CZ-NH2	-5.61	117.50	120.30
1	B	60	TRP	CA-CB-CG	-5.46	103.33	113.70
1	B	142	HIS	CB-CA-C	-5.46	99.49	110.40
1	B	55	LEU	CB-CG-CD1	5.44	120.25	111.00
1	A	100	TYR	CD1-CG-CD2	-5.37	111.99	117.90
1	A	86	ARG	CD-NE-CZ	-5.24	116.27	123.60
1	A	145	ARG	N-CA-CB	-5.23	101.18	110.60
1	A	129	ASP	CB-CG-OD1	5.23	123.01	118.30
1	A	100	TYR	CG-CD2-CE2	5.14	125.42	121.30
1	A	136	ASP	CB-CG-OD2	5.14	122.93	118.30
1	A	71	PHE	CB-CG-CD1	-5.13	117.21	120.80
1	A	100	TYR	CB-CG-CD2	5.07	124.04	121.00
1	A	69	ASP	OD1-CG-OD2	-5.03	113.74	123.30
1	B	114	ASN	CB-CG-OD1	5.01	131.63	121.60
1	B	48	GLU	CA-CB-CG	-5.00	102.39	113.40

There are no chirality outliers.

All (6) planarity outliers are listed below:

Mol	Chain	Res	Type	Group
1	A	29	ALA	Mainchain
1	A	31	TYR	Mainchain
1	B	115	LEU	Mainchain
1	B	35	SER	Mainchain
1	B	6	ILE	Mainchain
1	B	89	ALA	Mainchain

5.2 Close contacts

In the following table, the Non-H and H(model) columns list the number of non-hydrogen atoms and hydrogen atoms in the chain respectively. The H(added) column lists the number of hydrogens added by MolProbity. The Clashes column lists the number of clashes within the asymmetric unit, and the number in parentheses is this value normalized per 1000 atoms of the molecule in the chain. The Symm-Clashes column gives symmetry related clashes, in the same way as for the Clashes column.

Mol	Chain	Non-H	H(model)	H(added)	Clashes	Symm-Clashes
1	A	1105	0	1034	19	0
1	B	1105	0	1034	11	0
2	A	31	0	19	0	0
2	B	31	0	19	0	0
3	A	66	0	0	1	0
3	B	82	0	0	3	0
All	All	2420	0	2106	30	0

Clashscore is defined as the number of clashes calculated for the entry per 1000 atoms (including hydrogens) of the entry. The overall clashscore for this entry is 7.

All (30) close contacts within the same asymmetric unit are listed below.

Atom-1	Atom-2	Distance(Å)	Clash(Å)
1:B:114:ASN:HB3	3:B:2180:HOH:O	1.88	0.73
1:B:65:ILE:HD11	1:B:100:TYR:CD2	2.36	0.61
1:A:120:VAL:HG11	1:A:148:ILE:HG22	1.82	0.61
1:A:120:VAL:HG11	1:A:148:ILE:CG2	2.32	0.60
1:B:68:GLN:HE22	1:B:70:ASP:HB2	1.66	0.59
1:A:88:VAL:HG23	1:A:119:ILE:HD13	1.86	0.57
1:B:140:TRP:O	1:B:144:VAL:HG23	2.06	0.56
1:A:84:GLN:NE2	3:A:1169:HOH:O	2.38	0.56
1:A:65:ILE:HG13	1:A:100:TYR:CD2	2.42	0.55
1:B:84:GLN:NE2	3:B:2178:HOH:O	2.37	0.55
1:A:65:ILE:CD1	1:A:100:TYR:HD2	2.20	0.54

Continued on next page...

Continued from previous page...

Atom-1	Atom-2	Distance(Å)	Clash(Å)
1:B:65:ILE:HD11	1:B:100:TYR:HD2	1.72	0.54
1:A:99:GLU:CD	1:A:100:TYR:HE1	2.12	0.52
1:B:45:GLY:O	1:B:48:GLU:HG3	2.08	0.52
1:B:56:GLY:HA2	1:B:91:PHE:O	2.09	0.52
1:B:48:GLU:CD	3:B:2174:HOH:O	2.49	0.51
1:A:56:GLY:HA2	1:A:91:PHE:O	2.13	0.49
1:B:106:ASP:OD1	1:B:125:ARG:NH2	2.40	0.49
1:A:53:VAL:HB	1:A:88:VAL:HG12	1.95	0.47
1:A:29:ALA:CB	1:A:145:ARG:HD3	2.45	0.47
1:A:2:PRO:HG2	1:A:31:TYR:CE1	2.49	0.47
1:A:88:VAL:O	1:A:120:VAL:HG23	2.15	0.46
1:A:31:TYR:HE2	1:A:145:ARG:HG2	1.81	0.46
1:A:26:LEU:HD23	1:A:145:ARG:HG3	1.98	0.44
1:A:29:ALA:HB1	1:A:145:ARG:HD3	2.00	0.43
1:A:2:PRO:HB2	1:A:31:TYR:CE1	2.54	0.43
1:A:100:TYR:N	1:A:100:TYR:CD1	2.87	0.42
1:B:134:ARG:CG	1:B:134:ARG:HH11	2.33	0.42
1:A:100:TYR:N	1:A:100:TYR:HD1	2.18	0.41
1:A:99:GLU:HB3	1:A:100:TYR:HD1	1.86	0.40

There are no symmetry-related clashes.

5.3 Torsion angles

5.3.1 Protein backbone ⓘ

In the following table, the Percentiles column shows the percent Ramachandran outliers of the chain as a percentile score with respect to all X-ray entries followed by that with respect to entries of similar resolution. The Analysed column shows the number of residues for which the backbone conformation was analysed, and the total number of residues.

Mol	Chain	Analysed	Favoured	Allowed	Outliers	Percentiles	
1	A	145/147 (99%)	142 (98%)	3 (2%)	0	100	100
1	B	145/147 (99%)	141 (97%)	4 (3%)	0	100	100
All	All	290/294 (99%)	283 (98%)	7 (2%)	0	100	100

There are no Ramachandran outliers to report.

5.3.2 Protein sidechains ⓘ

In the following table, the Percentiles column shows the percent sidechain outliers of the chain as a percentile score with respect to all X-ray entries followed by that with respect to entries of similar resolution. The Analysed column shows the number of residues for which the sidechain conformation was analysed, and the total number of residues.

Mol	Chain	Analysed	Rotameric	Outliers	Percentiles	
1	A	112/112 (100%)	103 (92%)	9 (8%)	17	10
1	B	112/112 (100%)	100 (89%)	12 (11%)	10	5
All	All	224/224 (100%)	203 (91%)	21 (9%)	13	7

All (21) residues with a non-rotameric sidechain are listed below:

Mol	Chain	Res	Type
1	A	20	GLU
1	A	32	GLU
1	A	63	ASP
1	A	67	LEU
1	A	78	LEU
1	A	100	TYR
1	A	112	LEU
1	A	134	ARG
1	A	142	HIS
1	B	5	LEU
1	B	20	GLU
1	B	32	GLU
1	B	41	VAL
1	B	52	LEU
1	B	55	LEU
1	B	63	ASP
1	B	67	LEU
1	B	68	GLN
1	B	134	ARG
1	B	142	HIS
1	B	148	ILE

Some sidechains can be flipped to improve hydrogen bonding and reduce clashes. All (2) such sidechains are listed below:

Mol	Chain	Res	Type
1	B	68	GLN
1	B	114	ASN

5.3.3 RNA ⓘ

There are no RNA chains in this entry.

5.4 Non-standard residues in protein, DNA, RNA chains ⓘ

There are no non-standard protein/DNA/RNA residues in this entry.

5.5 Carbohydrates ⓘ

There are no carbohydrates in this entry.

5.6 Ligand geometry ⓘ

2 ligands are modelled in this entry.

In the following table, the Counts columns list the number of bonds (or angles) for which Mogul statistics could be retrieved, the number of bonds (or angles) that are observed in the model and the number of bonds (or angles) that are defined in the chemical component dictionary. The Link column lists molecule types, if any, to which the group is linked. The Z score for a bond length (or angle) is the number of standard deviations the observed value is removed from the expected value. A bond length (or angle) with $|Z| > 2$ is considered an outlier worth inspection. RMSZ is the root-mean-square of all Z scores of the bond lengths (or angles).

Mol	Type	Chain	Res	Link	Bond lengths			Bond angles		
					Counts	RMSZ	$\# Z > 2$	Counts	RMSZ	$\# Z > 2$
2	FMN	A	1149	-	33,33,33	2.76	16 (48%)	46,50,50	3.12	16 (34%)
2	FMN	B	2149	-	33,33,33	3.15	11 (33%)	46,50,50	3.80	20 (43%)

In the following table, the Chirals column lists the number of chiral outliers, the number of chiral centers analysed, the number of these observed in the model and the number defined in the chemical component dictionary. Similar counts are reported in the Torsion and Rings columns. '-' means no outliers of that kind were identified.

Mol	Type	Chain	Res	Link	Chirals	Torsions	Rings
2	FMN	A	1149	-	-	0/18/18/18	0/0/3/3
2	FMN	B	2149	-	-	0/18/18/18	0/0/3/3

All (27) bond length outliers are listed below:

Mol	Chain	Res	Type	Atoms	Z	Observed(Å)	Ideal(Å)
2	B	2149	FMN	C1'-N10	-9.31	1.37	1.48

Continued on next page...

Continued from previous page...

Mol	Chain	Res	Type	Atoms	Z	Observed(Å)	Ideal(Å)
2	A	1149	FMN	C1'-N10	-7.18	1.40	1.48
2	B	2149	FMN	C1'-C2'	6.96	1.58	1.51
2	B	2149	FMN	O4-C4	6.11	1.36	1.24
2	B	2149	FMN	O2-C2	5.91	1.35	1.23
2	A	1149	FMN	O4-C4	5.88	1.36	1.24
2	A	1149	FMN	O2-C2	4.90	1.33	1.23
2	B	2149	FMN	P-O2P	4.41	1.70	1.54
2	B	2149	FMN	P-O1P	4.41	1.66	1.51
2	A	1149	FMN	P-O3P	4.08	1.69	1.54
2	A	1149	FMN	C5A-N5	3.92	1.41	1.35
2	A	1149	FMN	P-O1P	3.83	1.64	1.51
2	B	2149	FMN	C5'-C4'	-3.76	1.45	1.51
2	A	1149	FMN	P-O2P	3.49	1.67	1.54
2	A	1149	FMN	C7M-C7	-3.33	1.43	1.51
2	B	2149	FMN	C8M-C8	-3.29	1.44	1.51
2	A	1149	FMN	C1'-C2'	3.26	1.54	1.51
2	B	2149	FMN	C5A-N5	3.23	1.40	1.35
2	A	1149	FMN	C8M-C8	-3.09	1.44	1.51
2	A	1149	FMN	C4'-C3'	-2.98	1.47	1.53
2	B	2149	FMN	C7M-C7	-2.74	1.45	1.51
2	B	2149	FMN	P-O5'	2.72	1.69	1.60
2	A	1149	FMN	C5'-C4'	-2.70	1.47	1.51
2	A	1149	FMN	C2'-C3'	2.60	1.58	1.53
2	A	1149	FMN	C9A-C5A	-2.44	1.37	1.42
2	A	1149	FMN	P-O5'	2.38	1.68	1.60
2	A	1149	FMN	C4-C4A	2.35	1.45	1.41

All (36) bond angle outliers are listed below:

Mol	Chain	Res	Type	Atoms	Z	Observed(°)	Ideal(°)
2	B	2149	FMN	C4A-C10-N10	12.93	126.96	120.51
2	B	2149	FMN	C9A-N10-C10	-11.44	110.54	121.77
2	A	1149	FMN	C9A-N10-C10	-10.41	111.55	121.77
2	B	2149	FMN	C1'-N10-C9A	9.14	127.77	118.87
2	A	1149	FMN	C5A-C9A-N10	8.92	125.59	116.80
2	A	1149	FMN	C1'-N10-C9A	8.55	127.19	118.87
2	B	2149	FMN	C5A-C9A-N10	6.70	123.40	116.80
2	B	2149	FMN	C6-C5A-N5	-6.23	111.71	118.97
2	A	1149	FMN	C4A-C10-N10	5.58	123.30	120.51
2	B	2149	FMN	C7-C6-C5A	-5.09	112.37	120.91
2	B	2149	FMN	C4-N3-C2	-4.91	115.32	125.39
2	B	2149	FMN	C4A-C10-N1	-4.87	117.86	122.73

Continued on next page...

Continued from previous page...

Mol	Chain	Res	Type	Atoms	Z	Observed(°)	Ideal(°)
2	B	2149	FMN	C6-C5A-C9A	4.46	125.19	119.02
2	B	2149	FMN	C4-C4A-C10	4.43	124.10	116.95
2	A	1149	FMN	C4A-N5-C5A	-3.88	112.33	116.69
2	A	1149	FMN	C6-C5A-N5	-3.80	114.54	118.97
2	A	1149	FMN	C4-C4A-C10	3.64	122.83	116.95
2	A	1149	FMN	C4A-C10-N1	-3.56	119.18	122.73
2	A	1149	FMN	C9-C9A-N10	-3.55	113.95	121.59
2	A	1149	FMN	C7-C6-C5A	-3.31	115.35	120.91
2	A	1149	FMN	O5'-P-O1P	3.11	115.82	106.71
2	A	1149	FMN	C2-N1-C10	3.00	118.00	114.98
2	A	1149	FMN	C6-C5A-C9A	2.93	123.08	119.02
2	A	1149	FMN	O3'-C3'-C2'	-2.87	101.49	108.74
2	B	2149	FMN	N3-C2-N1	2.85	127.24	121.19
2	B	2149	FMN	C9-C9A-N10	-2.80	115.56	121.59
2	A	1149	FMN	C10-C4A-N5	2.79	123.85	120.45
2	B	2149	FMN	C4A-N5-C5A	-2.74	113.61	116.69
2	B	2149	FMN	C6-C7-C8	2.53	123.92	119.88
2	B	2149	FMN	C8-C9-C9A	-2.48	114.81	119.81
2	B	2149	FMN	C7M-C7-C6	-2.47	114.42	120.38
2	B	2149	FMN	O3'-C3'-C2'	-2.36	102.77	108.74
2	B	2149	FMN	C8M-C8-C9	-2.26	114.94	120.38
2	B	2149	FMN	C4'-C3'-C2'	2.21	118.25	113.25
2	B	2149	FMN	O3P-P-O1P	2.19	117.59	110.44
2	A	1149	FMN	C6-C7-C8	2.16	123.34	119.88

There are no chirality outliers.

There are no torsion outliers.

There are no ring outliers.

5.7 Other polymers ⓘ

There are no such residues in this entry.

5.8 Polymer linkage issues

There are no chain breaks in this entry.

6 Fit of model and data ⓘ

6.1 Protein, DNA and RNA chains ⓘ

In the following table, the column labelled ‘#RSRZ> 2’ contains the number (and percentage) of RSRZ outliers, followed by percent RSRZ outliers for the chain as percentile scores relative to all X-ray entries and entries of similar resolution. The OWAB column contains the minimum, median, 95th percentile and maximum values of the occupancy-weighted average B-factor per residue. The column labelled ‘Q< 0.9’ lists the number of (and percentage) of residues with an average occupancy less than 0.9.

Mol	Chain	Analysed	<RSRZ>	#RSRZ>2	OWAB(Å ²)	Q<0.9
1	A	147/147 (100%)	-0.33	5 (3%) 43 43	16, 26, 52, 94	0
1	B	147/147 (100%)	-0.36	3 (2%) 62 62	16, 25, 51, 94	0
All	All	294/294 (100%)	-0.35	8 (2%) 52 52	16, 26, 56, 94	0

All (8) RSRZ outliers are listed below:

Mol	Chain	Res	Type	RSRZ
1	B	63	ASP	4.5
1	A	100	TYR	3.3
1	A	63	ASP	3.1
1	B	142	HIS	2.5
1	A	142	HIS	2.2
1	B	62	ASP	2.2
1	A	99	GLU	2.2
1	A	64	SER	2.1

6.2 Non-standard residues in protein, DNA, RNA chains ⓘ

There are no non-standard protein/DNA/RNA residues in this entry.

6.3 Carbohydrates ⓘ

There are no carbohydrates in this entry.

6.4 Ligands ⓘ

In the following table, the Atoms column lists the number of modelled atoms in the group and the number defined in the chemical component dictionary. LLDF column lists the quality of electron density of the group with respect to its neighbouring residues in protein, DNA or RNA chains.

The B-factors column lists the minimum, median, 95th percentile and maximum values of B factors of atoms in the group. The column labelled 'Q< 0.9' lists the number of atoms with occupancy less than 0.9.

Mol	Type	Chain	Res	Atoms	RSR	LLDF	B-factors(Å ²)	Q<0.9
2	FMN	B	2149	31/31	0.08	-0.32	12,20,30,35	0
2	FMN	A	1149	31/31	0.07	-0.41	13,21,32,34	0

6.5 Other polymers ⓘ

There are no such residues in this entry.