



# Full wwPDB X-ray Structure Validation Report

Feb 28, 2014 – 11:01 AM GMT

PDB ID : 4C7O  
Title : The structural basis of FtsY recruitment and GTPase activation by SRP RNA  
Authors : Voigts-Hoffmann, F.; Schmitz, N.; Shen, K.; Shan, S.O.; Ataide, S.F.; Ban, N.  
Deposited on : 2013-09-23  
Resolution : 2.60 Å(reported)

This is a full wwPDB validation report for a publicly released PDB entry.  
We welcome your comments at [validation@mail.wwpdb.org](mailto:validation@mail.wwpdb.org)  
A user guide is available at <http://wwpdb.org/ValidationPDFNotes.html>

---

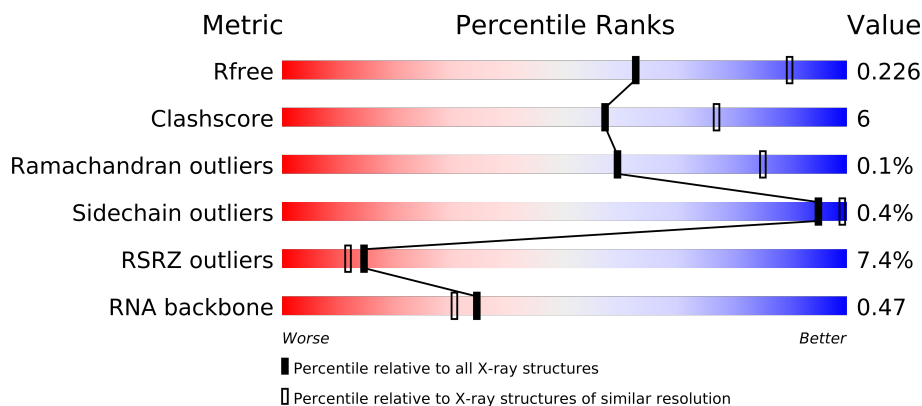
The following versions of software and data (see [references](#)) were used in the production of this report:

MolProbity : 4.02b-467  
Mogul : 1.15 2013  
Xtriage (Phenix) : dev-1323  
EDS : stable22639  
Percentile statistics : 21963  
Refmac : 5.8.0049  
CCP4 : 6.3.0 (Settle)  
Ideal geometry (proteins) : Engh & Huber (2001)  
Ideal geometry (DNA, RNA) : Parkinson et. al. (1996)  
Validation Pipeline (wwPDB-VP) : stable22683

# 1 Overall quality at a glance

The reported resolution of this entry is 2.60 Å.

Percentile scores (ranging between 0-100) for global validation metrics of the entry are shown in the following graphic. The table shows the number of entries on which the scores are based.



Metric	Whole archive (#Entries)	Similar resolution (#Entries, resolution range(Å))
$R_{free}$	66092	1718 (2.60-2.60)
Clashscore	79885	2154 (2.60-2.60)
Ramachandran outliers	78287	2113 (2.60-2.60)
Sidechain outliers	78261	2113 (2.60-2.60)
RSRZ outliers	66119	1718 (2.60-2.60)
RNA backbone	1838	1002 (3.12-2.08)

The table below summarises the geometric issues observed across the polymeric chains and their fit to the electron density. The red, orange, yellow and green segments on the lower bar indicate the fraction of residues that contain outliers for  $\geq 3$ , 2, 1 and 0 types of geometric quality criteria. The upper red bar (where present) indicates the fraction of residues that have poor fit to the electron density.

Mol	Chain	Length	Quality of chain
1	A	298	
1	C	298	
2	B	278	
2	D	278	
3	E	48	

The following table lists non-polymeric compounds that are outliers for geometric or electron-density-fit criteria:

Mol	Type	Chain	Res	Geometry	Electron density
4	ALF	A	1001	-	X

*Continued on next page...*

*Continued from previous page...*

Mol	Type	Chain	Res	Geometry	Electron density
4	ALF	B	1001	-	X
4	ALF	C	1001	-	X
5	MG	A	1002	-	X
5	MG	C	1002	-	X
5	MG	D	1002	-	X

## 2 Entry composition

There are 7 unique types of molecules in this entry. The entry contains 10374 atoms, of which 0 are hydrogen and 0 are deuterium.

In the tables below, the ZeroOcc column contains the number of atoms modelled with zero occupancy, the AltConf column contains the number of residues with at least one atom in alternate conformation and the Trace column contains the number of residues modelled with at most 2 atoms.

- Molecule 1 is a protein called SIGNAL RECOGNITION PARTICLE PROTEIN.

Mol	Chain	Residues	Atoms					ZeroOcc	AltConf	Trace
1	A	293	Total	C	N	O	S	0	0	0
			2233	1409	400	418	6			
1	C	297	Total	C	N	O	S	0	0	0
			2264	1429	404	424	7			

- Molecule 2 is a protein called SIGNAL RECOGNITION PARTICLE RECEPTOR FTSY.

Mol	Chain	Residues	Atoms					ZeroOcc	AltConf	Trace
2	B	271	Total	C	N	O	S	0	0	0
			2067	1306	356	399	6			
2	D	277	Total	C	N	O	S	0	0	0
			2117	1337	367	407	6			

There are 8 discrepancies between the modelled and reference sequences:

Chain	Residue	Modelled	Actual	Comment	Reference
B	26	GLY	-	EXPRESSION TAG	UNP P10121
B	27	LYS	-	EXPRESSION TAG	UNP P10121
B	28	LYS	-	EXPRESSION TAG	UNP P10121
B	29	ILE	-	EXPRESSION TAG	UNP P10121
D	26	GLY	-	EXPRESSION TAG	UNP P10121
D	27	LYS	-	EXPRESSION TAG	UNP P10121
D	28	LYS	-	EXPRESSION TAG	UNP P10121
D	29	ILE	-	EXPRESSION TAG	UNP P10121

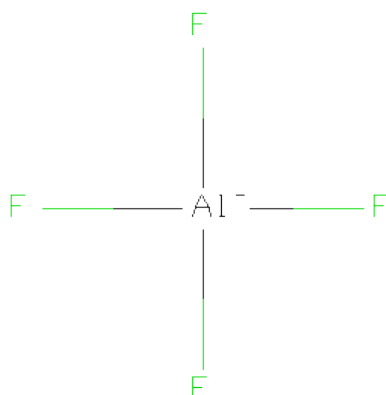
- Molecule 3 is a RNA chain called SRP RNA.

Mol	Chain	Residues	Atoms					ZeroOcc	AltConf	Trace
3	E	48	Total	C	N	O	P	0	0	0
			1028	457	183	340	48			

There are 4 discrepancies between the modelled and reference sequences:

Chain	Residue	Modelled	Actual	Comment	Reference
E	21	G	-	LINKER	GB AE005174
E	22	A	-	LINKER	GB AE005174
E	23	A	-	LINKER	GB AE005174
E	24	G	-	LINKER	GB AE005174

- Molecule 4 is TETRAFLUOROALUMINATE ION (three-letter code: ALF) (formula:  $\text{AlF}_4$ ).



Mol	Chain	Residues	Atoms			ZeroOcc	AltConf
4	A	1	Total	Al	F	0	0
			5	1	4		
4	B	1	Total	Al	F	0	0
			5	1	4		
4	C	1	Total	Al	F	0	0
			5	1	4		
4	D	1	Total	Al	F	0	0
			5	1	4		

- Molecule 5 is MAGNESIUM ION (three-letter code: MG) (formula:  $\text{Mg}$ ).

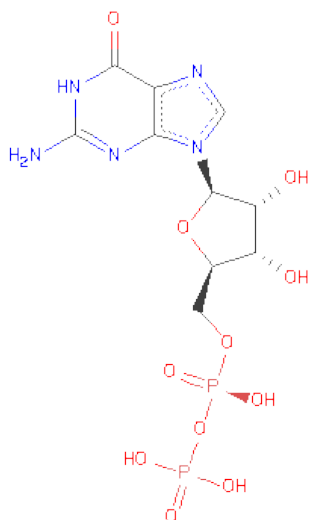
Mol	Chain	Residues	Atoms		ZeroOcc	AltConf
5	B	1	Total	Mg	0	0
			1	1		
5	A	1	Total	Mg	0	0
			1	1		
5	D	1	Total	Mg	0	0
			1	1		

*Continued on next page...*

Continued from previous page...

Mol	Chain	Residues	Atoms		ZeroOcc	AltConf
5	C	1	Total	Mg	0	0
			1	1		

- Molecule 6 is GUANOSINE-5'-DIPHOSPHATE (three-letter code: GDP) (formula:  $C_{10}H_{15}N_5O_{11}P_2$ ).



Mol	Chain	Residues	Atoms					ZeroOcc	AltConf
6	A	1	Total	C	N	O	P	0	0
			28	10	5	11	2		
6	B	1	Total	C	N	O	P	0	0
			28	10	5	11	2		
6	C	1	Total	C	N	O	P	0	0
			28	10	5	11	2		
6	D	1	Total	C	N	O	P	0	0
			28	10	5	11	2		
6	D	1	Total	C	N	O	P	0	0
			28	10	5	11	2		

- Molecule 7 is water.

Mol	Chain	Residues	Atoms		ZeroOcc	AltConf
7	A	80	Total	O	0	0
			80	80		
7	B	79	Total	O	0	0
			79	79		
7	C	136	Total	O	0	0
			136	136		

Continued on next page...

*Continued from previous page...*

Mol	Chain	Residues	Atoms		ZeroOcc	AltConf
7	D	144	Total 144	O 144	0	0
7	E	62	Total 62	O 62	0	0





## 4 Data and refinement statistics

Property	Value	Source
Space group	P 21 21 21	Depositor
Cell constants a, b, c, $\alpha$ , $\beta$ , $\gamma$	56.72Å 166.33Å 154.59Å 90.00° 90.00° 90.00°	Depositor
Resolution (Å)	49.22 – 2.60 49.22 – 2.60	Depositor EDS
% Data completeness (in resolution range)	99.3 (49.22-2.60) 99.3 (49.22-2.60)	Depositor EDS
$R_{merge}$	0.05	Depositor
$R_{sym}$	(Not available)	Depositor
$\langle I/\sigma(I) \rangle$ <sup>1</sup>	2.54 (at 2.61Å)	Xtriage
Refinement program	PHENIX (PHENIX.REFINE)	Depositor
R, $R_{free}$	0.163 , 0.226 0.166 , 0.226	Depositor DCC
$R_{free}$ test set	1852 reflections (4.06%)	DCC
Wilson B-factor (Å <sup>2</sup> )	62.0	Xtriage
Anisotropy	0.399	Xtriage
Bulk solvent $k_{sol}$ (e/Å <sup>3</sup> ), $B_{sol}$ (Å <sup>2</sup> )	0.30 , 58.2	EDS
Estimated twinning fraction	No twinning to report.	Xtriage
L-test for twinning	$\langle  L  \rangle = 0.47$ , $\langle L^2 \rangle = 0.30$	Xtriage
Outliers	0 of 45637 reflections	Xtriage
$F_o, F_c$ correlation	0.97	EDS
Total number of atoms	10374	wwPDB-VP
Average B, all atoms (Å <sup>2</sup> )	87.0	wwPDB-VP

Xtriage's analysis on translational NCS is as follows: *The largest off-origin peak in the Patterson function is 3.67% of the height of the origin peak. No significant pseudotranslation is detected.*

<sup>1</sup>Intensities estimated from amplitudes.

## 5 Model quality i

### 5.1 Standard geometry i

Bond lengths and bond angles in the following residue types are not validated in this section: GDP, ALF, MG

The Z score for a bond length (or angle) is the number of standard deviations the observed value is removed from the expected value. A bond length (or angle) with  $|Z| > 5$  is considered an outlier worth inspection. RMSZ is the root-mean-square of all Z scores of the bond lengths (or angles).

Mol	Chain	Bond lengths		Bond angles	
		RMSZ	$\# Z  > 5$	RMSZ	$\# Z  > 5$
1	A	0.42	0/2262	0.63	0/3057
1	C	0.50	0/2294	0.67	0/3099
2	B	0.44	0/2091	0.63	1/2822 (0.0%)
2	D	0.52	0/2141	0.66	0/2886
3	E	0.50	0/1148	1.00	0/1789
All	All	0.48	0/9936	0.71	1/13653 (0.0%)

There are no bond length outliers.

All (1) bond angle outliers are listed below:

Mol	Chain	Res	Type	Atoms	Z	Observed(°)	Ideal(°)
2	B	200	MET	CG-SD-CE	-5.13	92.00	100.20

There are no chirality outliers.

There are no planarity outliers.

### 5.2 Close contacts i

In the following table, the Non-H and H(model) columns list the number of non-hydrogen atoms and hydrogen atoms in the chain respectively. The H(added) column lists the number of hydrogens added by MolProbity. The Clashes column lists the number of clashes within the asymmetric unit, and the number in parentheses is this value normalized per 1000 atoms of the molecule in the chain. The Symm-Clashes column gives symmetry related clashes, in the same way as for the Clashes column.

Mol	Chain	Non-H	H(model)	H(added)	Clashes	Symm-Clashes
1	A	2233	0	0	13	0
1	C	2264	0	2	12	0
2	B	2067	0	0	16	0

*Continued on next page...*

*Continued from previous page...*

Mol	Chain	Non-H	H(model)	H(added)	Clashes	Symm-Clashes
2	D	2117	0	0	15	0
3	E	1028	0	0	7	0
4	A	5	0	0	0	0
4	B	5	0	0	0	0
4	C	5	0	0	0	0
4	D	5	0	0	0	0
5	A	1	0	0	0	0
5	B	1	0	0	0	0
5	C	1	0	0	0	0
5	D	1	0	0	0	0
6	A	28	0	0	0	0
6	B	28	0	0	3	0
6	C	28	0	0	1	0
6	D	56	0	0	1	0
7	A	80	0	0	7	0
7	B	79	0	0	5	0
7	C	136	0	0	7	0
7	D	144	0	0	5	0
7	E	62	0	0	3	0
All	All	10374	0	2	62	0

Clashscore is defined as the number of clashes calculated for the entry per 1000 atoms (including hydrogens) of the entry. The overall clashscore for this entry is 6.

All (62) close contacts within the same asymmetric unit are listed below.

Atom-1	Atom-2	Distance(Å)	Clash(Å)
1:C:141:ARG:NH1	7:C:2069:HOH:O	2.03	0.92
2:D:139:ARG:NH1	2:D:140:ALA:O	2.08	0.86
1:C:50:GLU:OE1	1:C:264:HIS:NE2	2.12	0.82
2:B:180:ARG:NH1	3:E:45:G:OP1	2.13	0.81
1:A:264:HIS:ND1	7:A:2002:HOH:O	2.19	0.76
1:A:141:ARG:NE	7:A:2038:HOH:O	2.24	0.69
1:C:141:ARG:NH2	7:C:2068:HOH:O	2.26	0.69
7:C:2071:HOH:O	2:D:139:ARG:NE	2.26	0.68
2:B:205:LYS:NZ	3:E:31:C:OP2	2.27	0.67
7:A:2017:HOH:O	6:B:1003:GDP:N2	2.27	0.67
1:C:228:ASP:OD1	1:C:231:ASN:ND2	2.29	0.65
7:B:2045:HOH:O	3:E:41:G:N2	2.29	0.65
1:A:169:VAL:N	7:A:2050:HOH:O	2.31	0.63
3:E:8:C:O2	3:E:38:G:N2	2.32	0.63
1:C:35:ARG:NH1	7:C:2006:HOH:O	2.34	0.60
2:D:95:GLU:O	7:D:2042:HOH:O	2.16	0.60

*Continued on next page...*

*Continued from previous page...*

Atom-1	Atom-2	Distance(Å)	Clash(Å)
2:B:113:THR:OG1	2:B:188:ASP:OD2	2.19	0.60
2:B:47:GLY:O	2:B:51:THR:OG1	2.21	0.59
1:A:50:GLU:OE1	1:A:264:HIS:NE2	2.36	0.59
1:A:216:GLU:OE1	1:A:243:THR:OG1	2.21	0.58
3:E:34:G:OP2	7:E:2060:HOH:O	2.17	0.56
2:B:126:GLN:NE2	7:B:2026:HOH:O	2.40	0.53
2:B:208:ARG:NH2	7:B:2054:HOH:O	2.42	0.52
1:A:109:GLN:NE2	7:A:2017:HOH:O	2.43	0.52
2:D:112:LYS:NZ	6:D:1003:GDP:O3B	2.43	0.52
2:D:254:LEU:O	2:D:301:ARG:NH2	2.43	0.52
1:C:292:SER:O	1:C:297:MET:N	2.43	0.52
2:B:149:TRP:O	2:B:153:ASN:ND2	2.44	0.51
2:D:238:LYS:NZ	2:D:242:GLU:OE2	2.44	0.50
2:D:190:ALA:O	2:D:192:ARG:NH2	2.44	0.50
1:A:285:PHE:O	7:A:2007:HOH:O	2.19	0.50
1:A:228:ASP:OD1	1:A:231:ASN:ND2	2.45	0.49
2:D:265:SER:N	7:D:2016:HOH:O	2.45	0.49
2:B:49:GLU:OE2	2:B:52:ARG:NH2	2.45	0.49
2:D:121:ARG:NE	7:D:2063:HOH:O	2.46	0.48
2:B:281:GLU:OE1	6:B:1003:GDP:O2'	2.32	0.48
1:C:119:LYS:NZ	7:C:2055:HOH:O	2.46	0.48
2:D:68:ARG:NE	7:D:2025:HOH:O	2.47	0.48
2:B:154:ASN:ND2	7:B:2041:HOH:O	2.46	0.48
2:B:144:GLU:OE1	2:B:144:GLU:N	2.47	0.47
2:D:226:ASP:OD2	2:D:253:LYS:NZ	2.47	0.47
1:A:255:ARG:NH2	1:A:294:ILE:O	2.46	0.47
3:E:28:G:OP1	7:E:2047:HOH:O	2.20	0.47
1:C:2:PHE:CD1	1:C:298:GLY:HA3	2.51	0.46
2:B:226:ASP:OD2	2:B:253:LYS:NZ	2.49	0.46
1:C:169:VAL:N	7:C:2088:HOH:O	2.48	0.46
2:D:162:THR:N	7:D:2091:HOH:O	2.49	0.45
2:B:255:ASP:OD1	6:B:1003:GDP:N1	2.50	0.44
2:D:113:THR:OG1	2:D:188:ASP:OD2	2.35	0.44
1:A:114:THR:OG1	1:A:190:ASP:OD2	2.36	0.44
2:D:135:GLY:O	2:D:166:SER:OG	2.34	0.44
3:E:1:G:N2	7:E:2001:HOH:O	2.51	0.44
1:C:222:ASP:OD2	1:C:249:LYS:NZ	2.51	0.43
2:D:118:LYS:NZ	2:D:280:GLY:O	2.52	0.42
2:B:147:GLN:NE2	7:B:2038:HOH:O	2.52	0.42
2:B:104:MET:O	2:B:189:THR:OG1	2.38	0.42
1:A:222:ASP:OD2	1:A:249:LYS:NZ	2.53	0.41
1:C:113:LYS:NZ	6:C:1003:GDP:O3B	2.54	0.41

*Continued on next page...*

*Continued from previous page...*

Atom-1	Atom-2	Distance(Å)	Clash(Å)
1:C:227:GLN:NE2	7:C:2007:HOH:O	2.53	0.41
1:A:21:ARG:NH2	1:A:63:GLU:OE2	2.53	0.41
1:A:158:ASP:N	7:A:2032:HOH:O	2.53	0.41
2:B:135:GLY:O	2:B:166:SER:OG	2.38	0.40

There are no symmetry-related clashes.

## 5.3 Torsion angles

### 5.3.1 Protein backbone ⓘ

In the following table, the Percentiles column shows the percent Ramachandran outliers of the chain as a percentile score with respect to all X-ray entries followed by that with respect to entries of similar resolution. The Analysed column shows the number of residues for which the backbone conformation was analysed, and the total number of residues.

Mol	Chain	Analysed	Favoured	Allowed	Outliers	Percentiles	
1	A	291/298 (98%)	274 (94%)	16 (6%)	1 (0%)	50	77
1	C	295/298 (99%)	279 (95%)	16 (5%)	0	100	100
2	B	269/278 (97%)	260 (97%)	9 (3%)	0	100	100
2	D	275/278 (99%)	267 (97%)	8 (3%)	0	100	100
All	All	1130/1152 (98%)	1080 (96%)	49 (4%)	1 (0%)	59	85

All (1) Ramachandran outliers are listed below:

Mol	Chain	Res	Type
1	A	65	ASN

### 5.3.2 Protein sidechains ⓘ

In the following table, the Percentiles column shows the percent sidechain outliers of the chain as a percentile score with respect to all X-ray entries followed by that with respect to entries of similar resolution. The Analysed column shows the number of residues for which the sidechain conformation was analysed, and the total number of residues.

Mol	Chain	Analysed	Rotameric	Outliers	Percentiles	
1	A	239/243 (98%)	238 (100%)	1 (0%)	95	99
1	C	242/243 (100%)	241 (100%)	1 (0%)	95	99

*Continued on next page...*

*Continued from previous page...*

Mol	Chain	Analysed	Rotameric	Outliers	Percentiles	
2	B	217/223 (97%)	216 (100%)	1 (0%)	94	99
2	D	222/223 (100%)	221 (100%)	1 (0%)	94	99
All	All	920/932 (99%)	916 (100%)	4 (0%)	95	99

All (4) residues with a non-rotameric sidechain are listed below:

Mol	Chain	Res	Type
1	A	62	HIS
2	B	126	GLN
1	C	141	ARG
2	D	284	GLU

Some sidechains can be flipped to improve hydrogen bonding and reduce clashes. There are no such sidechains identified.

### 5.3.3 RNA ⓘ

Mol	Chain	Analysed	Backbone Outliers	Pucker Outliers
3	E	47/48 (97%)	11 (23%)	0

All (11) RNA backbone outliers are listed below:

Mol	Chain	Res	Type
3	E	1	G
3	E	21	G
3	E	24	G
3	E	26	G
3	E	27	U
3	E	32	C
3	E	33	G
3	E	35	G
3	E	38	G
3	E	39	U
3	E	42	C

There are no RNA pucker outliers to report.

## 5.4 Non-standard residues in protein, DNA, RNA chains ⓘ

There are no non-standard protein/DNA/RNA residues in this entry.

## 5.5 Carbohydrates ⓘ

There are no carbohydrates in this entry.

## 5.6 Ligand geometry ⓘ

Of 13 ligands modelled in this entry, 4 are monoatomic - leaving 9 for Mogul analysis.

In the following table, the Counts columns list the number of bonds (or angles) for which Mogul statistics could be retrieved, the number of bonds (or angles) that are observed in the model and the number of bonds (or angles) that are defined in the chemical component dictionary. The Link column lists molecule types, if any, to which the group is linked. The Z score for a bond length (or angle) is the number of standard deviations the observed value is removed from the expected value. A bond length (or angle) with  $|Z| > 2$  is considered an outlier worth inspection. RMSZ is the root-mean-square of all Z scores of the bond lengths (or angles).

Mol	Type	Chain	Res	Link	Bond lengths			Bond angles		
					Counts	RMSZ	# $ Z  > 2$	Counts	RMSZ	# $ Z  > 2$
4	ALF	A	1001	5,7,6	4,4,4	1.71	0	0,6,6	0.00	-
6	GDP	A	1003	5,4	30,30,30	1.53	3 (10%)	44,47,47	3.96	12 (27%)
4	ALF	B	1001	7,6	4,4,4	1.80	0	0,6,6	0.00	-
6	GDP	B	1003	5,4	30,30,30	1.46	4 (13%)	44,47,47	3.65	9 (20%)
4	ALF	C	1001	5,7,6	4,4,4	1.77	0	0,6,6	0.00	-
6	GDP	C	1003	5,4	30,30,30	1.45	3 (10%)	44,47,47	4.81	12 (27%)
4	ALF	D	1001	7,6	4,4,4	1.75	0	0,6,6	0.00	-
6	GDP	D	1003	5,4	30,30,30	1.37	4 (13%)	44,47,47	3.38	9 (20%)
6	GDP	D	1306	-	30,30,30	1.43	5 (16%)	44,47,47	2.99	8 (18%)

In the following table, the Chirals column lists the number of chiral outliers, the number of chiral centers analysed, the number of these observed in the model and the number defined in the chemical component dictionary. Similar counts are reported in the Torsion and Rings columns. '-' means no outliers of that kind were identified.

Mol	Type	Chain	Res	Link	Chirals	Torsions	Rings
4	ALF	A	1001	5,7,6	-	0/0/0/0	0/0/0/0
6	GDP	A	1003	5,4	-	0/16/32/32	0/1/3/3
4	ALF	B	1001	7,6	-	0/0/0/0	0/0/0/0
6	GDP	B	1003	5,4	-	0/16/32/32	0/1/3/3
4	ALF	C	1001	5,7,6	-	0/0/0/0	0/0/0/0

*Continued on next page...*

*Continued from previous page...*

Mol	Type	Chain	Res	Link	Chirals	Torsions	Rings
6	GDP	C	1003	5,4	-	0/16/32/32	0/1/3/3
4	ALF	D	1001	7,6	-	0/0/0/0	0/0/0/0
6	GDP	D	1003	5,4	-	0/16/32/32	0/1/3/3
6	GDP	D	1306	-	-	0/16/32/32	0/1/3/3

All (19) bond length outliers are listed below:

Mol	Chain	Res	Type	Atoms	Z	Observed(Å)	Ideal(Å)
6	B	1003	GDP	C6-C5	5.15	1.49	1.41
6	A	1003	GDP	C6-C5	4.99	1.49	1.41
6	C	1003	GDP	C6-C5	4.43	1.48	1.41
6	A	1003	GDP	C4-N9	-4.31	1.31	1.37
6	D	1306	GDP	C6-C5	4.28	1.48	1.41
6	C	1003	GDP	C4-N9	-3.96	1.32	1.37
6	D	1003	GDP	C6-C5	3.81	1.47	1.41
6	D	1003	GDP	C4-N9	-3.59	1.32	1.37
6	D	1306	GDP	C5-C4	3.34	1.48	1.40
6	B	1003	GDP	C4-N9	-3.03	1.33	1.37
6	A	1003	GDP	C5-C4	2.38	1.45	1.40
6	C	1003	GDP	C2'-C1'	-2.32	1.50	1.53
6	D	1306	GDP	C4-N9	-2.28	1.34	1.37
6	D	1003	GDP	C5-C4	2.26	1.45	1.40
6	D	1306	GDP	C2-N3	2.13	1.36	1.33
6	B	1003	GDP	C2-N2	2.12	1.35	1.32
6	D	1003	GDP	O4'-C1'	2.10	1.44	1.41
6	B	1003	GDP	C5-C4	2.09	1.45	1.40
6	D	1306	GDP	C2-N2	2.02	1.35	1.32

All (50) bond angle outliers are listed below:

Mol	Chain	Res	Type	Atoms	Z	Observed(°)	Ideal(°)
6	C	1003	GDP	C6-C5-N7	28.28	137.95	134.14
6	A	1003	GDP	C6-C5-N7	23.03	137.24	134.14
6	B	1003	GDP	C6-C5-N7	20.44	136.89	134.14
6	D	1003	GDP	C6-C5-N7	19.29	136.74	134.14
6	D	1306	GDP	C6-C5-N7	15.62	136.24	134.14
6	D	1306	GDP	N3-C4-N9	5.65	135.19	126.91
6	C	1003	GDP	C2-N3-C4	5.49	122.80	115.09
6	D	1306	GDP	C5-C4-N3	-5.24	118.35	125.94
6	B	1003	GDP	N3-C4-N9	5.06	134.34	126.91
6	B	1003	GDP	C5-C4-N3	-5.04	118.64	125.94
6	C	1003	GDP	N3-C4-N9	4.95	134.17	126.91

*Continued on next page...*



*Continued from previous page...*

Mol	Chain	Res	Type	Atoms	Z	Observed(°)	Ideal(°)
6	C	1003	GDP	C5-C4-N3	-4.84	118.92	125.94
6	B	1003	GDP	C2-N3-C4	4.81	121.85	115.09
6	D	1003	GDP	N3-C4-N9	4.71	133.82	126.91
6	B	1003	GDP	C4-C5-N7	-4.62	105.56	109.52
6	C	1003	GDP	C4-C5-N7	-4.48	105.68	109.52
6	A	1003	GDP	C2-N3-C4	4.44	121.33	115.09
6	A	1003	GDP	C5-C4-N3	-4.42	119.53	125.94
6	A	1003	GDP	N3-C4-N9	4.36	133.30	126.91
6	D	1306	GDP	C2-N3-C4	4.35	121.20	115.09
6	A	1003	GDP	PA-O3A-PB	-4.32	119.01	131.68
6	C	1003	GDP	N2-C2-N1	4.32	122.62	117.86
6	C	1003	GDP	O4'-C1'-N9	-4.21	104.52	108.44
6	D	1306	GDP	PA-O3A-PB	-4.20	119.37	131.68
6	C	1003	GDP	N2-C2-N3	-4.11	114.73	120.30
6	D	1003	GDP	C5-C4-N3	-4.09	120.02	125.94
6	D	1003	GDP	C2-N3-C4	3.77	120.39	115.09
6	A	1003	GDP	O4'-C1'-N9	3.73	111.91	108.44
6	D	1306	GDP	O4'-C1'-N9	3.68	111.86	108.44
6	C	1003	GDP	C8-N9-C4	3.58	109.63	106.90
6	B	1003	GDP	N2-C2-N3	-3.57	115.46	120.30
6	D	1003	GDP	O4'-C1'-N9	3.45	111.65	108.44
6	C	1003	GDP	PA-O3A-PB	-3.42	121.65	131.68
6	B	1003	GDP	N2-C2-N1	3.39	121.59	117.86
6	A	1003	GDP	C4-C5-N7	-3.28	106.71	109.52
6	D	1003	GDP	C4-C5-N7	-3.28	106.71	109.52
6	D	1306	GDP	C4-C5-N7	-3.20	106.78	109.52
6	B	1003	GDP	C8-N9-C4	3.18	109.33	106.90
6	A	1003	GDP	C1'-N9-C4	-3.17	121.16	126.64
6	A	1003	GDP	N2-C2-N3	-3.13	116.06	120.30
6	D	1003	GDP	C1'-N9-C4	-2.90	121.62	126.64
6	A	1003	GDP	C8-N9-C4	2.83	109.06	106.90
6	D	1003	GDP	C8-N9-C4	2.72	108.97	106.90
6	D	1306	GDP	C3'-C2'-C1'	2.66	105.06	100.91
6	A	1003	GDP	O3'-C3'-C2'	-2.63	103.26	111.83
6	C	1003	GDP	C1'-N9-C4	-2.57	122.20	126.64
6	A	1003	GDP	N2-C2-N1	2.53	120.64	117.86
6	C	1003	GDP	O3'-C3'-C4'	-2.26	104.41	111.08
6	B	1003	GDP	O2A-PA-O3A	2.08	114.99	105.14
6	D	1003	GDP	N2-C2-N3	-2.00	117.59	120.30

There are no chirality outliers.

There are no torsion outliers.

There are no ring outliers.

## 5.7 Other polymers ⓘ

There are no such residues in this entry.

## 5.8 Polymer linkage issues

There are no chain breaks in this entry.

## 6 Fit of model and data ⓘ

### 6.1 Protein, DNA and RNA chains ⓘ

In the following table, the column labelled ‘#RSRZ > 2’ contains the number (and percentage) of RSRZ outliers, followed by percent RSRZ outliers for the chain as percentile scores relative to all X-ray entries and entries of similar resolution. The OWAB column contains the minimum, median, 95<sup>th</sup> percentile and maximum values of the occupancy-weighted average B-factor per residue. The column labelled ‘Q < 0.9’ lists the number of (and percentage) of residues with an average occupancy less than 0.9.

Mol	Chain	Analysed	<RSRZ>	#RSRZ>2	OWAB(Å <sup>2</sup> )	Q<0.9
1	A	293/298 (98%)	0.18	28 (9%) 8 6	39, 82, 198, 237	0
1	C	297/298 (99%)	-0.02	20 (6%) 17 15	36, 60, 178, 247	0
2	B	271/278 (97%)	0.36	38 (14%) 3 2	40, 88, 199, 227	0
2	D	277/278 (99%)	-0.39	1 (0%) 90 91	37, 56, 105, 134	0
3	E	48/48 (100%)	-0.23	2 (4%) 35 31	52, 102, 204, 228	0
All	All	1186/1200 (98%)	0.02	89 (7%) 14 11	36, 71, 190, 247	0

All (89) RSRZ outliers are listed below:

Mol	Chain	Res	Type	RSRZ
1	C	15	ASN	11.5
1	C	19	ARG	9.0
2	B	74	TYR	8.5
1	A	31	LEU	7.9
1	A	15	ASN	7.6
1	C	18	GLY	7.6
1	C	64	VAL	7.1
1	C	16	ILE	7.1
1	A	16	ILE	7.0
2	B	62	ALA	7.0
2	B	66	GLN	6.9
1	C	65	ASN	6.6
1	A	14	ARG	6.4
2	B	67	LEU	6.2
1	A	59	ALA	6.1
1	A	62	HIS	5.9
1	A	60	VAL	5.7
1	C	68	LEU	4.8
1	A	27	VAL	4.8
2	B	58	LEU	4.7

*Continued on next page...*

*Continued from previous page...*

Mol	Chain	Res	Type	RSRZ
2	B	72	ALA	4.6
1	A	55	VAL	4.6
1	C	63	GLU	4.5
2	B	69	ASP	4.4
1	C	71	GLY	4.2
2	B	76	LEU	4.2
2	B	36	GLU	4.1
1	A	17	SER	4.1
2	B	293	ASP	4.0
2	B	297	ALA	4.0
3	E	47	A	4.0
2	B	71	GLU	4.0
2	B	68	ARG	3.9
1	C	66	LYS	3.8
2	B	34	PHE	3.8
2	B	61	GLY	3.7
1	C	20	GLY	3.7
2	B	41	LEU	3.7
2	B	65	LYS	3.6
1	A	21	ARG	3.6
2	B	54	ILE	3.6
2	B	70	ALA	3.4
2	B	33	LEU	3.3
1	C	67	SER	3.3
1	A	22	LEU	3.3
1	A	72	GLN	3.2
1	A	5	LEU	3.1
1	A	19	ARG	3.1
1	C	13	LEU	3.0
2	B	37	LEU	3.0
2	B	300	ALA	3.0
1	A	20	GLY	3.0
1	A	9	LEU	2.9
2	B	264	PHE	2.9
2	B	59	THR	2.8
1	C	3	ASP	2.8
2	B	294	PHE	2.7
1	A	32	ARG	2.7
1	A	61	GLY	2.7
2	D	74	TYR	2.6
2	B	30	ASP	2.6
2	B	292	ASP	2.6

*Continued on next page...*

*Continued from previous page...*

Mol	Chain	Res	Type	RSRZ
2	B	81	MET	2.5
1	A	66	LYS	2.5
3	E	38	G	2.5
1	A	58	LYS	2.4
2	B	77	LEU	2.4
1	A	18	GLY	2.4
1	A	75	VAL	2.4
1	A	7	ASP	2.4
2	B	296	GLU	2.4
1	C	14	ARG	2.4
2	B	298	LEU	2.3
1	A	64	VAL	2.3
1	C	72	GLN	2.3
2	B	80	GLU	2.3
2	B	79	GLU	2.3
1	C	17	SER	2.3
2	B	78	LYS	2.3
1	A	23	THR	2.2
1	A	34	VAL	2.2
1	C	27	VAL	2.2
1	C	70	PRO	2.2
2	B	49	GLU	2.2
1	A	39	LEU	2.2
2	B	40	GLN	2.1
2	B	38	GLU	2.1
1	C	11	ARG	2.1
2	B	50	THR	2.0

## 6.2 Non-standard residues in protein, DNA, RNA chains ⓘ

There are no non-standard protein/DNA/RNA residues in this entry.

## 6.3 Carbohydrates ⓘ

There are no carbohydrates in this entry.

## 6.4 Ligands ⓘ

In the following table, the Atoms column lists the number of modelled atoms in the group and the number defined in the chemical component dictionary. LLDF column lists the quality of electron density of the group with respect to its neighbouring residues in protein, DNA or RNA chains.

The B-factors column lists the minimum, median, 95<sup>th</sup> percentile and maximum values of B factors of atoms in the group. The column labelled 'Q< 0.9' lists the number of atoms with occupancy less than 0.9.

Mol	Type	Chain	Res	Atoms	RSR	LLDF	B-factors(Å <sup>2</sup> )	Q<0.9
5	MG	C	1002	1/1	0.17	5.16	45,45,45,45	0
5	MG	A	1002	1/1	0.19	3.30	50,50,50,50	0
4	ALF	C	1001	5/5	0.18	2.71	45,47,57,66	0
5	MG	D	1002	1/1	0.19	2.31	36,36,36,36	0
4	ALF	A	1001	5/5	0.17	2.30	45,50,63,75	0
4	ALF	B	1001	5/5	0.19	2.15	38,40,52,62	0
6	GDP	B	1003	28/28	0.16	1.03	37,52,60,61	0
6	GDP	C	1003	28/28	0.17	0.92	27,37,47,54	0
6	GDP	D	1003	28/28	0.17	0.91	28,40,46,56	0
6	GDP	A	1003	28/28	0.16	0.84	28,40,45,48	0
5	MG	B	1002	1/1	0.14	0.07	43,43,43,43	0
4	ALF	D	1001	5/5	0.15	-0.08	29,38,43,57	0
6	GDP	D	1306	28/28	0.13	-0.84	73,84,107,108	0

## 6.5 Other polymers ⓘ

There are no such residues in this entry.