



Full wwPDB X-ray Structure Validation Report

Feb 28, 2014 – 01:44 AM GMT

PDB ID : 2C8C
Title : STRUCTURE OF THE ARTT MOTIF Q212A MUTANT C3BOT1 EXOENZYME (NAD-BOUND STATE, CRYSTAL FORM I)
Authors : Stura, E.A.; Menetrey, J.; Flatau, G.; Boquet, P.; Menez, A.
Deposited on : 2005-12-03
Resolution : 2.70 Å(reported)

This is a full wwPDB validation report for a publicly released PDB entry.
We welcome your comments at validation@mail.wwpdb.org
A user guide is available at <http://wwpdb.org/ValidationPDFNotes.html>

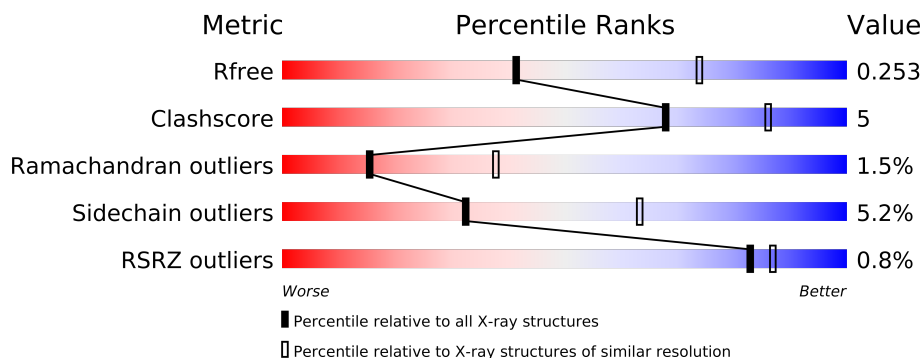
The following versions of software and data (see [references](#)) were used in the production of this report:

MolProbity : 4.02b-467
Mogul : 1.15 2013
Xtriage (Phenix) : dev-1323
EDS : stable22639
Percentile statistics : 21963
Refmac : 5.8.0049
CCP4 : 6.3.0 (Settle)
Ideal geometry (proteins) : Engh & Huber (2001)
Ideal geometry (DNA, RNA) : Parkinson et. al. (1996)
Validation Pipeline (wwPDB-VP) : stable22683

1 Overall quality at a glance

The reported resolution of this entry is 2.70 Å.

Percentile scores (ranging between 0-100) for global validation metrics of the entry are shown in the following graphic. The table shows the number of entries on which the scores are based.



Metric	Whole archive (#Entries)	Similar resolution (#Entries, resolution range(Å))
R_{free}	66092	1557 (2.70-2.70)
Clashscore	79885	1939 (2.70-2.70)
Ramachandran outliers	78287	1905 (2.70-2.70)
Sidechain outliers	78261	1905 (2.70-2.70)
RSRZ outliers	66119	1559 (2.70-2.70)

The table below summarises the geometric issues observed across the polymeric chains and their fit to the electron density. The red, orange, yellow and green segments on the lower bar indicate the fraction of residues that contain outliers for ≥ 3 , 2, 1 and 0 types of geometric quality criteria. The upper red bar (where present) indicates the fraction of residues that have poor fit to the electron density.

Mol	Chain	Length	Quality of chain
1	A	211	
1	B	211	
1	C	211	
1	D	211	

2 Entry composition

There are 3 unique types of molecules in this entry. The entry contains 6581 atoms, of which 0 are hydrogen and 0 are deuterium.

In the tables below, the ZeroOcc column contains the number of atoms modelled with zero occupancy, the AltConf column contains the number of residues with at least one atom in alternate conformation and the Trace column contains the number of residues modelled with at most 2 atoms.

- Molecule 1 is a protein called MONO-ADP-RIBOSYLTRANSFERASEC3.

Mol	Chain	Residues	Atoms					ZeroOcc	AltConf	Trace
1	A	205	Total	C	N	O	S	0	0	1
			1595	1014	272	302	7			
1	B	205	Total	C	N	O	S	0	0	0
			1604	1018	273	306	7			
1	C	208	Total	C	N	O	S	0	0	0
			1630	1036	278	309	7			
1	D	204	Total	C	N	O	S	0	0	1
			1593	1012	272	302	7			

There are 4 discrepancies between the modelled and reference sequences:

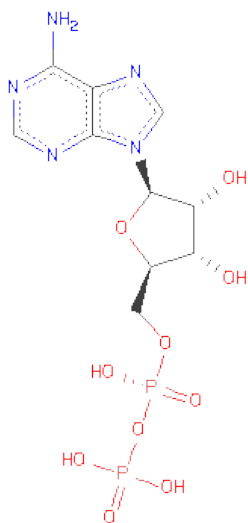
Chain	Residue	Modelled	Actual	Comment	Reference
A	212	ALA	GLN	ENGINEERED MUTATION	UNP P15879
B	212	ALA	GLN	ENGINEERED MUTATION	UNP P15879
C	212	ALA	GLN	ENGINEERED MUTATION	UNP P15879
D	212	ALA	GLN	ENGINEERED MUTATION	UNP P15879

- Molecule 2 is NICOTINAMIDE-ADENINE-DINUCLEOTIDE (three-letter code: NAD) (formula: $C_{21}H_{27}N_7O_{14}P_2$).



Mol	Chain	Residues	Atoms					ZeroOcc	AltConf
2	A	1	Total	C	N	O	P	0	0
			44	21	7	14	2		
2	B	1	Total	C	N	O	P	0	0
			44	21	7	14	2		
2	C	1	Total	C	N	O	P	0	0
			44	21	7	14	2		

- Molecule 3 is ADENOSINE-5'-DIPHOSPHATE (three-letter code: ADP) (formula: $C_{10}H_{15}N_5O_{10}P_2$).



Mol	Chain	Residues	Atoms					ZeroOcc	AltConf
3	D	1	Total	C	N	O	P	0	0
			27	10	5	10	2		

3 Residue-property plots

These plots are drawn for all protein, RNA and DNA chains in the entry. The first graphic for a chain summarises the proportions of errors displayed in the second graphic. The second graphic shows the sequence view annotated by issues in geometry and electron density. Residues are color-coded according to the number of geometric quality criteria for which they contain at least one outlier: green = 0, yellow = 1, orange = 2 and red = 3 or more. A red dot above a residue indicates a poor fit to the electron density ($RSRZ > 2$). Stretches of 2 or more consecutive residues without any outlier are shown as a green connector. Residues present in the sample, but not in the model, are shown in grey.

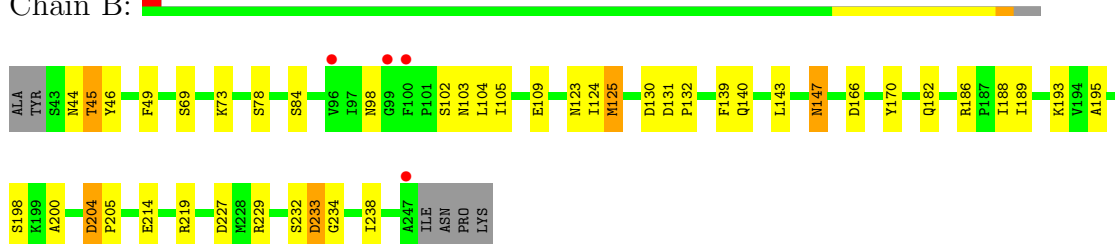
• Molecule 1: MONO-ADP-RIBOSYLTRANSFERASEC3

Chain A:



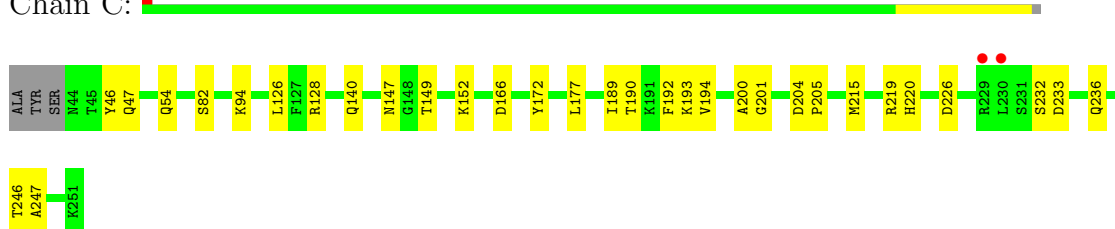
• Molecule 1: MONO-ADP-RIBOSYLTRANSFERASEC3

Chain B:



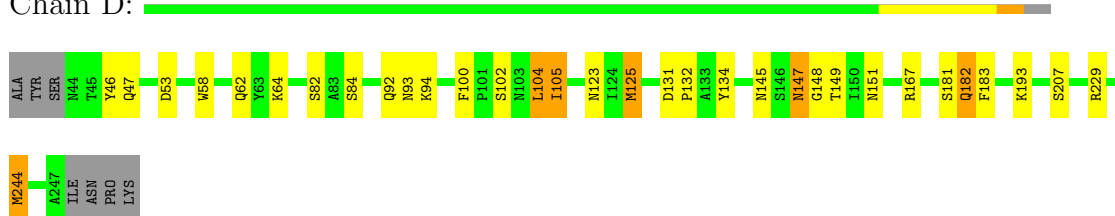
• Molecule 1: MONO-ADP-RIBOSYLTRANSFERASEC3

Chain C:



• Molecule 1: MONO-ADP-RIBOSYLTRANSFERASEC3

Chain D:



4 Data and refinement statistics

Property	Value	Source
Space group	C 1 2 1	Depositor
Cell constants a, b, c, α , β , γ	106.05Å 76.14Å 120.43Å 90.00° 102.74° 90.00°	Depositor
Resolution (Å)	39.84 – 2.70 39.89 – 2.70	Depositor EDS
% Data completeness (in resolution range)	100.0 (39.84-2.70) 95.7 (39.89-2.70)	Depositor EDS
R_{merge}	0.09	Depositor
R_{sym}	(Not available)	Depositor
$\langle I/\sigma(I) \rangle$ ¹	2.63 (at 2.69Å)	Xtriage
Refinement program	REFMAC 5.1.24	Depositor
R, R_{free}	0.241 , 0.283 0.213 , 0.253	Depositor DCC
R_{free} test set	1262 reflections (5.36%)	DCC
Wilson B-factor (Å ²)	60.7	Xtriage
Anisotropy	0.671	Xtriage
Bulk solvent k_{sol} (e/Å ³), B_{sol} (Å ²)	0.30 , 19.1	EDS
Estimated twinning fraction	No twinning to report.	Xtriage
L-test for twinning	$\langle L \rangle = 0.50$, $\langle L^2 \rangle = 0.34$	Xtriage
Outliers	0 of 24818 reflections	Xtriage
F_o, F_c correlation	0.95	EDS
Total number of atoms	6581	wwPDB-VP
Average B, all atoms (Å ²)	59.0	wwPDB-VP

Xtriage's analysis on translational NCS is as follows: *The largest off-origin peak in the Patterson function is 4.95% of the height of the origin peak. No significant pseudotranslation is detected.*

¹Intensities estimated from amplitudes.

5 Model quality

5.1 Standard geometry

Bond lengths and bond angles in the following residue types are not validated in this section: NAD, ADP

The Z score for a bond length (or angle) is the number of standard deviations the observed value is removed from the expected value. A bond length (or angle) with $|Z| > 5$ is considered an outlier worth inspection. RMSZ is the root-mean-square of all Z scores of the bond lengths (or angles).

Mol	Chain	Bond lengths		Bond angles	
		RMSZ	# $ Z > 5$	RMSZ	# $ Z > 5$
1	A	0.74	0/1623	0.81	2/2180 (0.1%)
1	B	0.73	0/1632	0.84	5/2192 (0.2%)
1	C	0.79	0/1659	0.84	3/2228 (0.1%)
1	D	0.80	0/1621	0.83	1/2177 (0.0%)
All	All	0.77	0/6535	0.83	11/8777 (0.1%)

There are no bond length outliers.

All (11) bond angle outliers are listed below:

Mol	Chain	Res	Type	Atoms	Z	Observed(°)	Ideal(°)
1	C	233	ASP	CB-CG-OD2	6.58	124.22	118.30
1	A	204	ASP	CB-CG-OD2	6.46	124.11	118.30
1	B	227	ASP	CB-CG-OD2	6.45	124.11	118.30
1	B	130	ASP	CB-CG-OD2	6.42	124.08	118.30
1	C	166	ASP	CB-CG-OD2	6.27	123.95	118.30
1	B	204	ASP	CB-CG-OD2	6.21	123.89	118.30
1	B	166	ASP	CB-CG-OD2	5.98	123.68	118.30
1	A	227	ASP	CB-CG-OD2	5.86	123.57	118.30
1	B	233	ASP	CB-CG-OD2	5.47	123.23	118.30
1	D	53	ASP	CB-CG-OD2	5.10	122.89	118.30
1	C	226	ASP	CB-CG-OD2	5.05	122.85	118.30

There are no chirality outliers.

There are no planarity outliers.

5.2 Close contacts

In the following table, the Non-H and H(model) columns list the number of non-hydrogen atoms and hydrogen atoms in the chain respectively. The H(added) column lists the number of hydrogens

added by MolProbity. The Clashes column lists the number of clashes within the asymmetric unit, and the number in parentheses is this value normalized per 1000 atoms of the molecule in the chain. The Symm-Clashes column gives symmetry related clashes, in the same way as for the Clashes column.

Mol	Chain	Non-H	H(model)	H(added)	Clashes	Symm-Clashes
1	A	1595	0	1614	13	0
1	B	1604	0	1623	26	0
1	C	1630	0	1655	12	0
1	D	1593	0	1613	15	0
2	A	44	0	26	1	0
2	B	44	0	25	1	0
2	C	44	0	26	1	0
3	D	27	0	12	0	0
All	All	6581	0	6594	65	0

Clashscore is defined as the number of clashes calculated for the entry per 1000 atoms (including hydrogens) of the entry. The overall clashscore for this entry is 5.

All (65) close contacts within the same asymmetric unit are listed below.

Atom-1	Atom-2	Distance(Å)	Clash(Å)
1:D:244:MET:CE	1:D:244:MET:SD	2.04	1.44
1:B:147:ASN:HD22	1:B:147:ASN:H	1.32	0.75
1:B:49:PHE:HE1	1:B:124:ILE:HD11	1.56	0.70
1:D:147:ASN:ND2	1:D:149:THR:H	1.95	0.65
1:A:161:LYS:HE2	1:A:162:PHE:CZ	2.33	0.63
1:B:147:ASN:HD22	1:B:147:ASN:N	1.96	0.62
1:C:147:ASN:HD21	1:C:149:THR:HG23	1.65	0.61
1:A:138:GLU:HG2	1:A:139:PHE:CD1	2.37	0.60
1:D:147:ASN:HD22	1:D:148:GLY:N	2.00	0.59
1:A:131:ASP:HB3	1:A:132:PRO:HD2	1.85	0.58
1:B:105:ILE:HG12	1:B:109:GLU:OE2	2.07	0.55
1:B:49:PHE:CE1	1:B:124:ILE:HD11	2.41	0.54
1:B:45:THR:HG23	1:B:123:ASN:HD22	1.74	0.53
1:B:125:MET:HE2	1:B:193:LYS:HA	1.92	0.52
1:A:131:ASP:HB3	1:A:132:PRO:CD	2.40	0.51
1:C:190:THR:HG21	1:C:192:PHE:CZ	2.46	0.51
1:D:125:MET:CE	1:D:193:LYS:HG2	2.41	0.51
1:C:172:TYR:CZ	1:C:219:ARG:HD3	2.46	0.51
1:C:126:LEU:CD2	1:C:177:LEU:HD23	2.41	0.51
1:B:44:ASN:O	1:B:45:THR:HG22	2.12	0.50
1:B:69:SER:O	1:B:73:LYS:HG3	2.12	0.49
1:B:102:SER:O	1:B:105:ILE:HG22	2.12	0.49
1:C:126:LEU:HD12	1:C:194:VAL:HG21	1.94	0.49

Continued on next page...

Continued from previous page...

Atom-1	Atom-2	Distance(Å)	Clash(Å)
1:C:147:ASN:ND2	1:C:149:THR:HG23	2.28	0.48
1:B:147:ASN:ND2	1:B:147:ASN:H	2.06	0.48
1:B:143:LEU:HD21	1:B:188:ILE:HD11	1.94	0.48
1:C:46:TYR:CE2	1:C:193:LYS:HB3	2.49	0.48
1:D:131:ASP:HB3	1:D:132:PRO:CD	2.45	0.47
1:C:201:GLY:O	1:C:215:MET:HA	2.14	0.47
1:B:44:ASN:O	1:B:45:THR:CB	2.63	0.47
1:A:50:THR:HB	1:D:47:GLN:NE2	2.30	0.46
1:D:181:SER:O	1:D:182:GLN:C	2.53	0.46
1:C:204:ASP:N	1:C:205:PRO:CD	2.79	0.45
1:B:189:ILE:HB	1:B:238:ILE:HD13	1.97	0.45
1:D:58:TRP:O	1:D:62:GLN:HG2	2.16	0.45
1:C:189:ILE:HD11	1:C:236:GLN:NE2	2.32	0.45
1:D:125:MET:HE2	1:D:193:LYS:HG2	1.98	0.45
1:A:220:HIS:CD2	1:A:247:ALA:HB3	2.52	0.45
1:A:139:PHE:CE2	1:A:158:ALA:HB2	2.52	0.45
1:C:220:HIS:HD2	1:C:247:ALA:HB3	1.82	0.44
1:A:186:ARG:O	1:A:236:GLN:NE2	2.50	0.44
1:D:145:ASN:HD21	1:D:151:ASN:HD22	1.65	0.44
1:D:147:ASN:C	1:D:147:ASN:HD22	2.19	0.44
1:B:49:PHE:HE1	1:B:124:ILE:CD1	2.29	0.44
1:D:104:LEU:O	1:D:105:ILE:C	2.56	0.44
1:A:166:ASP:OD1	1:A:224:HIS:ND1	2.38	0.44
1:B:195:ALA:O	1:B:198:SER:OG	2.21	0.44
1:A:147:ASN:ND2	1:A:149:THR:HG23	2.33	0.44
1:D:46:TYR:CD2	1:D:123:ASN:HB3	2.53	0.43
1:B:170:TYR:O	1:B:219:ARG:HB2	2.19	0.43
1:B:131:ASP:HB3	1:B:132:PRO:CD	2.49	0.43
1:B:125:MET:CE	1:B:193:LYS:HG2	2.49	0.43
1:A:104:LEU:HD12	1:A:104:LEU:HA	1.80	0.43
1:B:125:MET:HE2	1:B:193:LYS:HG2	2.01	0.42
1:B:132:PRO:HG3	1:B:143:LEU:HD23	2.01	0.42
1:C:128:ARG:HB2	2:C:1252:NAD:O7N	2.19	0.42
1:B:139:PHE:O	1:B:140:GLN:C	2.56	0.42
1:A:172:TYR:HB3	1:A:216:LEU:HD11	2.01	0.42
1:B:46:TYR:CD2	1:B:123:ASN:HB3	2.55	0.42
1:D:93:ASN:ND2	1:D:100:PHE:CE1	2.88	0.41
1:A:128:ARG:HA	2:A:1248:NAD:O7N	2.20	0.41
1:B:214:GLU:OE2	2:B:1248:NAD:H6N	2.20	0.41
1:D:134:TYR:CZ	1:D:167:ARG:NH1	2.88	0.41
1:B:44:ASN:O	1:B:45:THR:HB	2.20	0.40
1:B:204:ASP:N	1:B:205:PRO:CD	2.84	0.40

There are no symmetry-related clashes.

5.3 Torsion angles

5.3.1 Protein backbone ⓘ

In the following table, the Percentiles column shows the percent Ramachandran outliers of the chain as a percentile score with respect to all X-ray entries followed by that with respect to entries of similar resolution. The Analysed column shows the number of residues for which the backbone conformation was analysed, and the total number of residues.

Mol	Chain	Analysed	Favoured	Allowed	Outliers	Percentiles	
1	A	203/211 (96%)	189 (93%)	11 (5%)	3 (2%)	15	38
1	B	203/211 (96%)	189 (93%)	9 (4%)	5 (2%)	9	21
1	C	206/211 (98%)	191 (93%)	12 (6%)	3 (2%)	15	38
1	D	202/211 (96%)	192 (95%)	9 (4%)	1 (0%)	38	70
All	All	814/844 (96%)	761 (94%)	41 (5%)	12 (2%)	15	38

All (12) Ramachandran outliers are listed below:

Mol	Chain	Res	Type
1	A	181	SER
1	A	247	ALA
1	C	94	LYS
1	B	182	GLN
1	B	234	GLY
1	A	94	LYS
1	B	98	ASN
1	B	200	ALA
1	B	233	ASP
1	C	200	ALA
1	C	232	SER
1	D	105	ILE

5.3.2 Protein sidechains ⓘ

In the following table, the Percentiles column shows the percent sidechain outliers of the chain as a percentile score with respect to all X-ray entries followed by that with respect to entries of similar resolution. The Analysed column shows the number of residues for which the sidechain conformation was analysed, and the total number of residues.

Mol	Chain	Analysed	Rotameric	Outliers	Percentiles	
1	A	171/178 (96%)	165 (96%)	6 (4%)	48	80
1	B	173/178 (97%)	163 (94%)	10 (6%)	28	57
1	C	176/178 (99%)	170 (97%)	6 (3%)	49	81
1	D	172/178 (97%)	158 (92%)	14 (8%)	17	36
All	All	692/712 (97%)	656 (95%)	36 (5%)	32	63

All (36) residues with a non-rotameric sidechain are listed below:

Mol	Chain	Res	Type
1	A	47	GLN
1	A	60	ASN
1	A	71	SER
1	A	92	GLN
1	A	125	MET
1	A	220	HIS
1	B	45	THR
1	B	78	SER
1	B	84	SER
1	B	103	ASN
1	B	104	LEU
1	B	125	MET
1	B	147	ASN
1	B	186	ARG
1	B	229	ARG
1	B	232	SER
1	C	47	GLN
1	C	54	GLN
1	C	82	SER
1	C	140	GLN
1	C	152	LYS
1	C	246	THR
1	D	64	LYS
1	D	82	SER
1	D	84	SER
1	D	92	GLN
1	D	94	LYS
1	D	102	SER
1	D	104	LEU
1	D	125	MET
1	D	147	ASN
1	D	182	GLN
1	D	183	PHE

Continued on next page...

Continued from previous page...

Mol	Chain	Res	Type
1	D	207	SER
1	D	229	ARG
1	D	244	MET

Some sidechains can be flipped to improve hydrogen bonding and reduce clashes. All (27) such sidechains are listed below:

Mol	Chain	Res	Type
1	A	47	GLN
1	A	60	ASN
1	A	92	GLN
1	A	93	ASN
1	A	116	ASN
1	A	182	GLN
1	A	220	HIS
1	B	44	ASN
1	B	54	GLN
1	B	103	ASN
1	B	147	ASN
1	B	182	GLN
1	C	47	GLN
1	C	51	ASN
1	C	92	GLN
1	C	107	GLN
1	C	147	ASN
1	C	182	GLN
1	C	220	HIS
1	C	249	ASN
1	D	44	ASN
1	D	47	GLN
1	D	116	ASN
1	D	140	GLN
1	D	145	ASN
1	D	147	ASN
1	D	182	GLN

5.3.3 RNA ⓘ

There are no RNA chains in this entry.

5.4 Non-standard residues in protein, DNA, RNA chains ⓘ

There are no non-standard protein/DNA/RNA residues in this entry.

5.5 Carbohydrates ⓘ

There are no carbohydrates in this entry.

5.6 Ligand geometry ⓘ

4 ligands are modelled in this entry.

In the following table, the Counts columns list the number of bonds (or angles) for which Mogul statistics could be retrieved, the number of bonds (or angles) that are observed in the model and the number of bonds (or angles) that are defined in the chemical component dictionary. The Link column lists molecule types, if any, to which the group is linked. The Z score for a bond length (or angle) is the number of standard deviations the observed value is removed from the expected value. A bond length (or angle) with $|Z| > 2$ is considered an outlier worth inspection. RMSZ is the root-mean-square of all Z scores of the bond lengths (or angles).

Mol	Type	Chain	Res	Link	Bond lengths			Bond angles		
					Counts	RMSZ	$\# Z > 2$	Counts	RMSZ	$\# Z > 2$
2	NAD	A	1248	-	48,48,48	1.53	6 (12%)	73,73,73	1.93	14 (19%)
2	NAD	B	1248	-	48,48,48	1.40	4 (8%)	73,73,73	2.38	15 (20%)
2	NAD	C	1252	-	48,48,48	1.50	5 (10%)	73,73,73	1.86	15 (20%)
3	ADP	D	1247	-	29,29,29	1.47	4 (13%)	45,45,45	1.77	5 (11%)

In the following table, the Chirals column lists the number of chiral outliers, the number of chiral centers analysed, the number of these observed in the model and the number defined in the chemical component dictionary. Similar counts are reported in the Torsion and Rings columns. '-' means no outliers of that kind were identified.

Mol	Type	Chain	Res	Link	Chirals	Torsions	Rings
2	NAD	A	1248	-	-	0/30/62/62	0/3/5/5
2	NAD	B	1248	-	1/1/11/11	0/30/62/62	0/3/5/5
2	NAD	C	1252	-	-	0/30/62/62	0/3/5/5
3	ADP	D	1247	-	-	0/16/32/32	0/1/3/3

All (19) bond length outliers are listed below:

Mol	Chain	Res	Type	Atoms	Z	Observed(Å)	Ideal(Å)
2	A	1248	NAD	O7N-C7N	7.35	1.41	1.24
2	C	1252	NAD	O7N-C7N	6.29	1.38	1.24

Continued on next page...

Continued from previous page...

Mol	Chain	Res	Type	Atoms	Z	Observed(Å)	Ideal(Å)
2	B	1248	NAD	O7N-C7N	5.90	1.38	1.24
2	C	1252	NAD	C2A-N3A	4.13	1.40	1.32
3	D	1247	ADP	C2-N3	3.78	1.39	1.32
3	D	1247	ADP	PA-O3A	3.73	1.66	1.59
2	B	1248	NAD	C2A-N3A	3.42	1.38	1.32
2	A	1248	NAD	C2A-N3A	3.31	1.38	1.32
3	D	1247	ADP	C2-N1	3.05	1.39	1.33
3	D	1247	ADP	PB-O3A	2.98	1.65	1.60
2	C	1252	NAD	C2A-N1A	2.95	1.39	1.33
2	C	1252	NAD	C2N-N1N	2.87	1.38	1.35
2	B	1248	NAD	C2A-N1A	2.80	1.39	1.33
2	A	1248	NAD	PA-O3	2.50	1.64	1.59
2	C	1252	NAD	C8A-N9A	2.38	1.40	1.36
2	A	1248	NAD	C2A-N1A	2.32	1.38	1.33
2	A	1248	NAD	O4D-C1D	2.27	1.44	1.41
2	A	1248	NAD	PN-O3	2.03	1.64	1.60
2	B	1248	NAD	C2B-C1B	2.02	1.56	1.53

All (49) bond angle outliers are listed below:

Mol	Chain	Res	Type	Atoms	Z	Observed(°)	Ideal(°)
2	B	1248	NAD	C2D-C1D-N1N	11.59	133.48	113.86
2	C	1252	NAD	N3A-C2A-N1A	-9.68	120.62	128.71
2	A	1248	NAD	N3A-C2A-N1A	-9.33	120.91	128.71
3	D	1247	ADP	N3-C2-N1	-8.65	121.47	128.71
2	B	1248	NAD	O4D-C1D-N1N	8.08	116.22	107.95
2	B	1248	NAD	N3A-C2A-N1A	-7.93	122.08	128.71
2	A	1248	NAD	O4D-C1D-N1N	5.62	113.70	107.95
2	A	1248	NAD	C2D-C1D-N1N	5.34	122.89	113.86
2	C	1252	NAD	C2D-C1D-N1N	5.27	122.78	113.86
2	B	1248	NAD	O4B-C1B-N9A	4.60	112.72	108.44
2	B	1248	NAD	N3A-C4A-N9A	4.06	132.76	125.43
2	A	1248	NAD	N3A-C4A-N9A	3.96	132.58	125.43
2	C	1252	NAD	N3A-C4A-N9A	3.95	132.56	125.43
2	B	1248	NAD	C6N-N1N-C2N	-3.68	117.89	122.04
3	D	1247	ADP	N3-C4-N9	3.47	131.69	125.43
2	C	1252	NAD	C3N-C7N-N7N	3.26	121.48	117.77
2	B	1248	NAD	C3N-C7N-N7N	3.10	121.30	117.77
2	B	1248	NAD	O7N-C7N-N7N	-2.79	118.56	122.59
2	B	1248	NAD	PN-O3-PA	-2.77	121.06	132.95
2	C	1252	NAD	O2N-PN-O1N	2.73	126.95	118.72
2	B	1248	NAD	C5A-C4A-N3A	-2.65	119.93	125.70

Continued on next page...

Continued from previous page...

Mol	Chain	Res	Type	Atoms	Z	Observed(°)	Ideal(°)
2	A	1248	NAD	C6N-N1N-C2N	-2.61	119.09	122.04
2	A	1248	NAD	O2B-C2B-C1B	2.60	119.09	111.23
2	C	1252	NAD	PN-O3-PA	-2.58	121.88	132.95
2	A	1248	NAD	C2N-C3N-C4N	2.54	121.19	118.31
2	B	1248	NAD	O2B-C2B-C1B	2.53	118.88	111.23
3	D	1247	ADP	C4'-O4'-C1'	2.50	112.47	109.75
2	A	1248	NAD	O2D-C2D-C1D	-2.47	103.75	111.23
2	A	1248	NAD	C3N-C7N-N7N	2.44	120.55	117.77
2	A	1248	NAD	C5D-C4D-C3D	-2.44	105.45	115.21
2	A	1248	NAD	PN-O3-PA	-2.40	122.66	132.95
2	C	1252	NAD	C6N-N1N-C2N	-2.39	119.34	122.04
2	C	1252	NAD	O4D-C1D-N1N	2.31	110.31	107.95
3	D	1247	ADP	C5-C4-N3	-2.28	120.73	125.70
2	B	1248	NAD	O4D-C1D-C2D	2.28	110.27	106.77
2	C	1252	NAD	C2N-C3N-C4N	2.27	120.89	118.31
2	B	1248	NAD	O2A-PA-O5B	2.26	119.92	108.51
3	D	1247	ADP	C4-C5-N7	-2.25	107.59	109.52
2	A	1248	NAD	C5A-C4A-N3A	-2.24	120.81	125.70
2	B	1248	NAD	C6N-N1N-C1D	2.23	124.87	119.33
2	B	1248	NAD	C2D-C3D-C4D	2.17	106.98	102.65
2	C	1252	NAD	O2N-PN-O5D	-2.15	99.30	108.19
2	C	1252	NAD	N7A-C8A-N9A	-2.13	108.33	114.36
2	C	1252	NAD	C1B-N9A-C4A	-2.11	122.99	126.64
2	C	1252	NAD	C5A-C4A-N3A	-2.11	121.11	125.70
2	C	1252	NAD	C3B-C2B-C1B	2.09	104.18	100.91
2	A	1248	NAD	N7A-C8A-N9A	-2.09	108.45	114.36
2	C	1252	NAD	O7N-C7N-N7N	-2.02	119.67	122.59
2	A	1248	NAD	O2N-PN-O5D	-2.00	99.92	108.19

All (1) chirality outliers are listed below:

Mol	Chain	Res	Type	Atom
2	B	1248	NAD	C1D

There are no torsion outliers.

There are no ring outliers.

5.7 Other polymers ⓘ

There are no such residues in this entry.

5.8 Polymer linkage issues

There are no chain breaks in this entry.

6 Fit of model and data ⓘ

6.1 Protein, DNA and RNA chains ⓘ

In the following table, the column labelled ‘#RSRZ> 2’ contains the number (and percentage) of RSRZ outliers, followed by percent RSRZ outliers for the chain as percentile scores relative to all X-ray entries and entries of similar resolution. The OWAB column contains the minimum, median, 95th percentile and maximum values of the occupancy-weighted average B-factor per residue. The column labelled ‘Q< 0.9’ lists the number of (and percentage) of residues with an average occupancy less than 0.9.

Mol	Chain	Analysed	<RSRZ>	#RSRZ>2	OWAB(Å ²)	Q<0.9
1	A	205/211 (97%)	-0.28	1 (0%) 88 92	36, 58, 76, 84	0
1	B	205/211 (97%)	-0.07	4 (1%) 62 68	41, 63, 86, 94	0
1	C	208/211 (98%)	-0.20	2 (0%) 79 83	37, 56, 84, 92	0
1	D	204/211 (96%)	-0.25	0 100 100	36, 55, 77, 90	0
All	All	822/844 (97%)	-0.20	7 (0%) 83 85	36, 59, 82, 94	0

All (7) RSRZ outliers are listed below:

Mol	Chain	Res	Type	RSRZ
1	B	96	VAL	4.0
1	B	100	PHE	3.4
1	C	230	LEU	2.3
1	B	247	ALA	2.1
1	C	229	ARG	2.1
1	B	99	GLY	2.1
1	A	245	GLY	2.1

6.2 Non-standard residues in protein, DNA, RNA chains ⓘ

There are no non-standard protein/DNA/RNA residues in this entry.

6.3 Carbohydrates ⓘ

There are no carbohydrates in this entry.

6.4 Ligands

In the following table, the Atoms column lists the number of modelled atoms in the group and the number defined in the chemical component dictionary. LLDF column lists the quality of electron density of the group with respect to its neighbouring residues in protein, DNA or RNA chains. The B-factors column lists the minimum, median, 95th percentile and maximum values of B factors of atoms in the group. The column labelled 'Q< 0.9' lists the number of atoms with occupancy less than 0.9.

Mol	Type	Chain	Res	Atoms	RSR	LLDF	B-factors(Å ²)	Q<0.9
2	NAD	C	1252	44/44	0.15	0.38	33,46,50,52	44
3	ADP	D	1247	27/27	0.15	0.30	78,86,92,94	0
2	NAD	A	1248	44/44	0.15	-0.06	32,43,50,51	44
2	NAD	B	1248	44/44	0.11	-1.05	50,63,75,77	0

6.5 Other polymers

There are no such residues in this entry.