



# wwPDB X-ray Structure Validation Summary Report

Feb 26, 2014 – 02:29 PM GMT

PDB ID : 4C91  
Title : Evidence that GH115 alpha-glucuronidase activity is dependent on conformational flexibility  
Authors : Rogowski, A.; Basle, A.; Farinas, C.S.; Solovyova, A.; Mortimer, J.C.; Dupree, P.; Gilbert, H.J.; Bolam, D.N.  
Deposited on : 2013-10-02  
Resolution : 2.14 Å(reported)

This is a wwPDB validation summary report for a publicly released PDB entry.  
We welcome your comments at [validation@mail.wwpdb.org](mailto:validation@mail.wwpdb.org)  
A user guide is available at <http://wwpdb.org/ValidationPDFNotes.html>

---

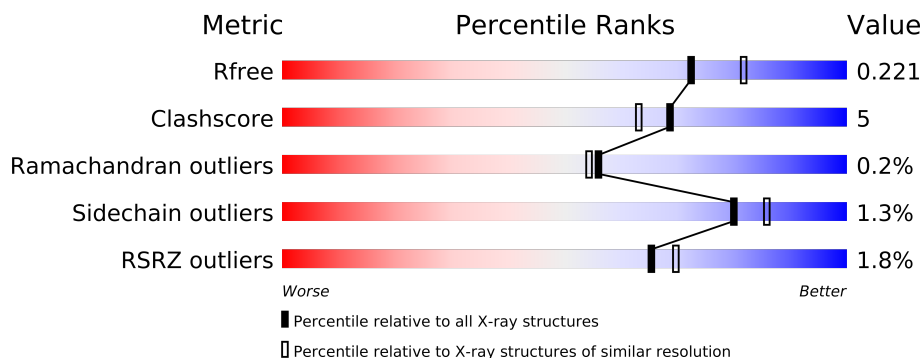
The following versions of software and data (see [references](#)) were used in the production of this report:

MolProbity : 4.02b-467  
Mogul : 1.15 2013  
Xtriage (Phenix) : dev-1323  
EDS : stable22639  
Percentile statistics : 21963  
Refmac : 5.8.0049  
CCP4 : 6.3.0 (Settle)  
Ideal geometry (proteins) : Engh & Huber (2001)  
Ideal geometry (DNA, RNA) : Parkinson et. al. (1996)  
Validation Pipeline (wwPDB-VP) : stable22683

# 1 Overall quality at a glance

The reported resolution of this entry is 2.14 Å.

Percentile scores (ranging between 0-100) for global validation metrics of the entry are shown in the following graphic. The table shows the number of entries on which the scores are based.



Metric	Whole archive (#Entries)	Similar resolution (#Entries, resolution range(Å))
$R_{free}$	66092	1116 (2.16-2.12)
Clashscore	79885	1302 (2.16-2.12)
Ramachandran outliers	78287	1281 (2.16-2.12)
Sidechain outliers	78261	1281 (2.16-2.12)
RSRZ outliers	66119	1116 (2.16-2.12)

The table below summarises the geometric issues observed across the polymeric chains and their fit to the electron density. The red, orange, yellow and green segments on the lower bar indicate the fraction of residues that contain outliers for  $\geq 3$ , 2, 1 and 0 types of geometric quality criteria. The upper red bar (where present) indicates the fraction of residues that have poor fit to the electron density.

Mol	Chain	Length	Quality of chain
1	A	856	
1	B	856	

The following table lists non-polymeric compounds that are outliers for geometric or electron-density-fit criteria:

Mol	Type	Chain	Res	Geometry	Electron density
3	REL	A	1856	-	X

## 2 Entry composition i

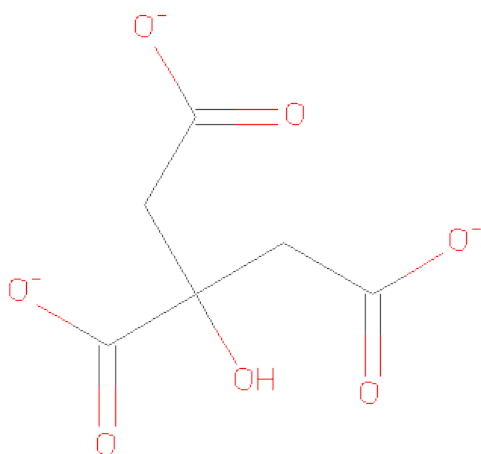
There are 4 unique types of molecules in this entry. The entry contains 13323 atoms, of which 0 are hydrogen and 0 are deuterium.

In the tables below, the ZeroOcc column contains the number of atoms modelled with zero occupancy, the AltConf column contains the number of residues with at least one atom in alternate conformation and the Trace column contains the number of residues modelled with at most 2 atoms.

- Molecule 1 is a protein called ALPHA-GLUCURONIDASE GH115.

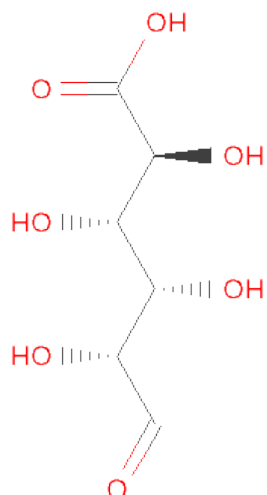
Mol	Chain	Residues	Atoms					ZeroOcc	AltConf	Trace
1	A	811	Total	C	N	O	S	0	1	0
			6373	4097	1053	1185	38			
1	B	809	Total	C	N	O	S	0	0	0
			6322	4065	1034	1185	38			

- Molecule 2 is CITRATE ANION (three-letter code: FLC) (formula:  $C_6H_5O_7$ ).



Mol	Chain	Residues	Atoms			ZeroOcc	AltConf
2	A	1	Total	C	O	0	0
			13	6	7		

- Molecule 3 is SUGAR (D-GLUCURONIC ACID) (three-letter code: REL) (formula:  $C_6H_{10}O_7$ ).



Mol	Chain	Residues	Atoms			ZeroOcc	AltConf
3	A	1	Total	C	O	0	0
			13	6	7		

- Molecule 4 is water.

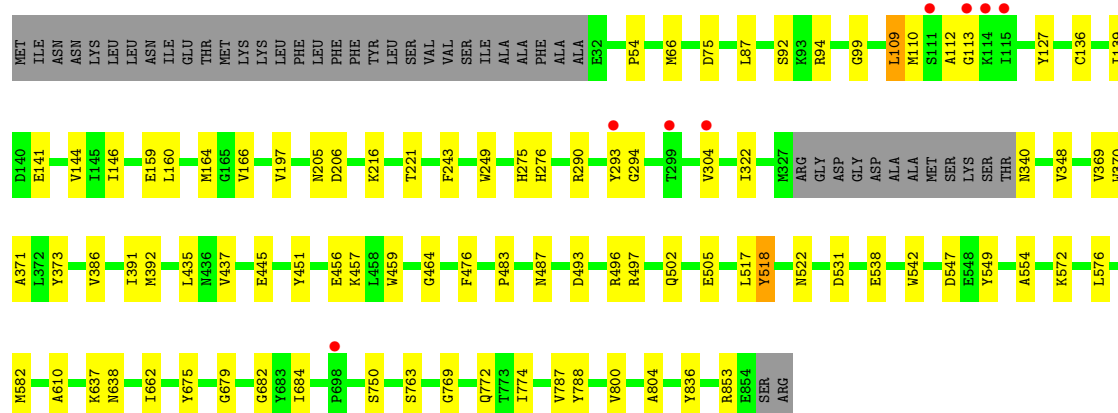
Mol	Chain	Residues	Atoms		ZeroOcc	AltConf
4	A	339	Total	O	0	0
			339	339		
4	B	263	Total	O	0	0
			263	263		

### 3 Residue-property plots

These plots are drawn for all protein, RNA and DNA chains in the entry. The first graphic for a chain summarises the proportions of errors displayed in the second graphic. The second graphic shows the sequence view annotated by issues in geometry and electron density. Residues are color-coded according to the number of geometric quality criteria for which they contain at least one outlier: green = 0, yellow = 1, orange = 2 and red = 3 or more. A red dot above a residue indicates a poor fit to the electron density ( $RSRZ > 2$ ). Stretches of 2 or more consecutive residues without any outlier are shown as a green connector. Residues present in the sample, but not in the model, are shown in grey.

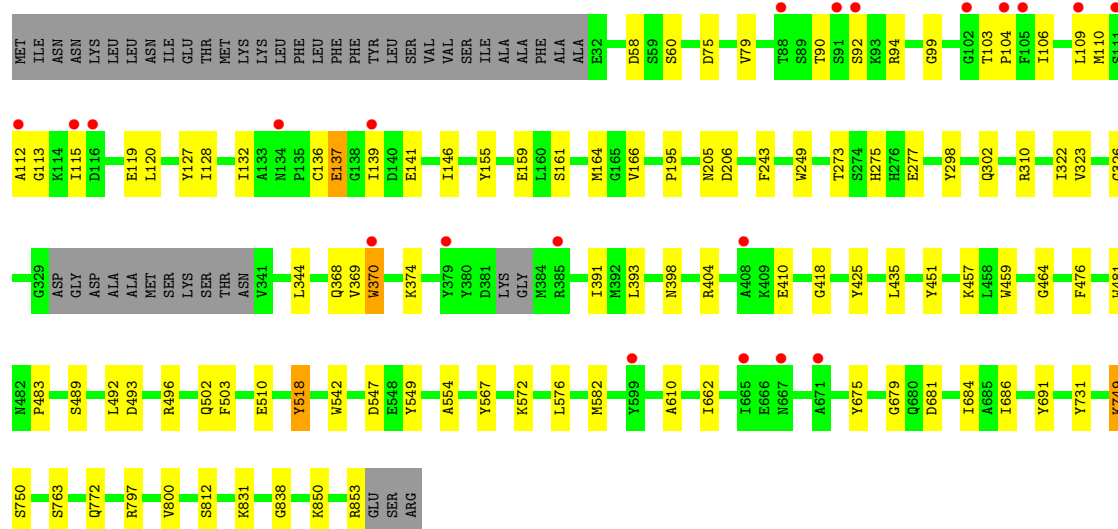
#### • Molecule 1: ALPHA-GLUCURONIDASE GH115

Chain A: 



#### • Molecule 1: ALPHA-GLUCURONIDASE GH115

Chain B: 



## 4 Data and refinement statistics

Property	Value	Source
Space group	P 21 21 21	Depositor
Cell constants a, b, c, $\alpha$ , $\beta$ , $\gamma$	72.04Å 130.29Å 190.17Å 90.00° 90.00° 90.00°	Depositor
Resolution (Å)	44.74 – 2.14 44.70 – 2.14	Depositor EDS
% Data completeness (in resolution range)	93.8 (44.74-2.14) 93.8 (44.70-2.14)	Depositor EDS
$R_{merge}$	0.10	Depositor
$R_{sym}$	(Not available)	Depositor
$\langle I/\sigma(I) \rangle$ <sup>1</sup>	2.30 (at 2.14Å)	Xtriage
Refinement program	REFMAC 5.7.0032	Depositor
R, $R_{free}$	0.174 , 0.219 0.179 , 0.221	Depositor DCC
$R_{free}$ test set	4649 reflections (5.25%)	DCC
Wilson B-factor (Å <sup>2</sup> )	22.4	Xtriage
Anisotropy	0.104	Xtriage
Bulk solvent $k_{sol}$ (e/Å <sup>3</sup> ), $B_{sol}$ (Å <sup>2</sup> )	0.40 , 29.6	EDS
Estimated twinning fraction	No twinning to report.	Xtriage
L-test for twinning	$\langle  L  \rangle = 0.47$ , $\langle L^2 \rangle = 0.30$	Xtriage
Outliers	0 of 93196 reflections	Xtriage
$F_o, F_c$ correlation	0.95	EDS
Total number of atoms	13323	wwPDB-VP
Average B, all atoms (Å <sup>2</sup> )	26.0	wwPDB-VP

Xtriage's analysis on translational NCS is as follows: *The largest off-origin peak in the Patterson function is 5.19% of the height of the origin peak. No significant pseudotranslation is detected.*

<sup>1</sup>Intensities estimated from amplitudes.

## 5 Model quality ⓘ

### 5.1 Standard geometry ⓘ

Bond lengths and bond angles in the following residue types are not validated in this section: FLC, REL

The Z score for a bond length (or angle) is the number of standard deviations the observed value is removed from the expected value. A bond length (or angle) with  $|Z| > 5$  is considered an outlier worth inspection. RMSZ is the root-mean-square of all Z scores of the bond lengths (or angles).

Mol	Chain	Bond lengths		Bond angles	
		RMSZ	$\# Z  > 5$	RMSZ	$\# Z  > 5$
1	A	0.82	0/6549	0.81	3/8927 (0.0%)
1	B	0.79	1/6493 (0.0%)	0.79	2/8856 (0.0%)
All	All	0.80	1/13042 (0.0%)	0.80	5/17783 (0.0%)

All (1) bond length outliers are listed below:

Mol	Chain	Res	Type	Atoms	Z	Observed(Å)	Ideal(Å)
1	B	155	TYR	CE1-CZ	-5.31	1.31	1.38

All (5) bond angle outliers are listed below:

Mol	Chain	Res	Type	Atoms	Z	Observed(°)	Ideal(°)
1	A	497	ARG	NE-CZ-NH1	6.21	123.41	120.30
1	A	531	ASP	CB-CG-OD2	-5.94	112.95	118.30
1	B	310	ARG	NE-CZ-NH2	-5.75	117.43	120.30
1	A	531	ASP	CB-CG-OD1	5.27	123.04	118.30
1	B	749	LYS	CD-CE-NZ	5.10	123.43	111.70

There are no chirality outliers.

There are no planarity outliers.

### 5.2 Close contacts ⓘ

In the following table, the Non-H and H(model) columns list the number of non-hydrogen atoms and hydrogen atoms in the chain respectively. The H(added) column lists the number of hydrogens added by MolProbity. The Clashes column lists the number of clashes within the asymmetric unit, and the number in parentheses is this value normalized per 1000 atoms of the molecule in the chain. The Symm-Clashes column gives symmetry related clashes, in the same way as for the Clashes column.

Mol	Chain	Non-H	H(model)	H(added)	Clashes	Symm-Clashes
1	A	6373	0	5971	58	0
1	B	6322	0	5872	64	0
2	A	13	0	5	0	0
3	A	13	0	9	3	0
4	A	339	0	0	3	0
4	B	263	0	0	3	0
All	All	13323	0	11857	119	0

Clashscore is defined as the number of clashes calculated for the entry per 1000 atoms (including hydrogens) of the entry. The overall clashscore for this entry is 5.

The worst 5 of 119 close contacts within the same asymmetric unit are listed below.

Atom-1	Atom-2	Distance(Å)	Clash(Å)
1:A:205:ASN:OD1	3:A:1856:REL:H1	1.71	0.89
1:B:326:GLY:HA3	1:B:370:TRP:CZ3	2.08	0.88
1:A:386:VAL:HG11	1:A:392:MET:SD	2.22	0.80
1:B:112:ALA:O	1:B:132:ILE:HG21	1.82	0.79
1:A:276:HIS:NE2	1:A:373:TYR:OH	2.16	0.78

There are no symmetry-related clashes.

## 5.3 Torsion angles

### 5.3.1 Protein backbone ⓘ

In the following table, the Percentiles column shows the percent Ramachandran outliers of the chain as a percentile score with respect to all X-ray entries followed by that with respect to entries of similar resolution. The Analysed column shows the number of residues for which the backbone conformation was analysed, and the total number of residues.

Mol	Chain	Analysed	Favoured	Allowed	Outliers	Percentiles	
1	A	808/856 (94%)	775 (96%)	32 (4%)	1 (0%)	59	60
1	B	803/856 (94%)	770 (96%)	31 (4%)	2 (0%)	56	54
All	All	1611/1712 (94%)	1545 (96%)	63 (4%)	3 (0%)	56	54

All (3) Ramachandran outliers are listed below:

Mol	Chain	Res	Type
1	B	137	GLU
1	A	113	GLY
1	B	374	LYS



### 5.3.2 Protein sidechains ⓘ

In the following table, the Percentiles column shows the percent sidechain outliers of the chain as a percentile score with respect to all X-ray entries followed by that with respect to entries of similar resolution. The Analysed column shows the number of residues for which the sidechain conformation was analysed, and the total number of residues.

Mol	Chain	Analysed	Rotameric	Outliers	Percentiles	
1	A	638/740 (86%)	630 (99%)	8 (1%)	80	86
1	B	628/740 (85%)	620 (99%)	8 (1%)	80	86
All	All	1266/1480 (86%)	1250 (99%)	16 (1%)	80	86

5 of 16 residues with a non-rotameric sidechain are listed below:

Mol	Chain	Res	Type
1	A	549	TYR
1	B	109	LEU
1	B	518	TYR
1	A	542	TRP
1	B	542	TRP

Some sidechains can be flipped to improve hydrogen bonding and reduce clashes. There are no such sidechains identified.

### 5.3.3 RNA ⓘ

There are no RNA chains in this entry.

## 5.4 Non-standard residues in protein, DNA, RNA chains ⓘ

There are no non-standard protein/DNA/RNA residues in this entry.

## 5.5 Carbohydrates ⓘ

There are no carbohydrates in this entry.

## 5.6 Ligand geometry ⓘ

2 ligands are modelled in this entry.

In the following table, the Counts columns list the number of bonds (or angles) for which Mogul statistics could be retrieved, the number of bonds (or angles) that are observed in the model and

the number of bonds (or angles) that are defined in the chemical component dictionary. The Link column lists molecule types, if any, to which the group is linked. The Z score for a bond length (or angle) is the number of standard deviations the observed value is removed from the expected value. A bond length (or angle) with  $|Z| > 2$  is considered an outlier worth inspection. RMSZ is the root-mean-square of all Z scores of the bond lengths (or angles).

Mol	Type	Chain	Res	Link	Bond lengths			Bond angles		
					Counts	RMSZ	# Z  > 2	Counts	RMSZ	# Z  > 2
2	FLC	A	1855	-	5,12,12	1.63	1 (20%)	7,17,17	7.78	7 (100%)
3	REL	A	1856	-	12,12,12	1.15	1 (8%)	16,16,16	2.68	7 (43%)

In the following table, the Chirals column lists the number of chiral outliers, the number of chiral centers analysed, the number of these observed in the model and the number defined in the chemical component dictionary. Similar counts are reported in the Torsion and Rings columns. '-' means no outliers of that kind were identified.

Mol	Type	Chain	Res	Link	Chirals	Torsions	Rings
2	FLC	A	1855	-	-	0/6/16/16	0/0/0/0
3	REL	A	1856	-	2/2/5/6	0/17/18/18	0/0/0/0

All (2) bond length outliers are listed below:

Mol	Chain	Res	Type	Atoms	Z	Observed(Å)	Ideal(Å)
2	A	1855	FLC	CG-CGC	-2.94	1.47	1.49
3	A	1856	REL	C3-C2	2.10	1.56	1.53

The worst 5 of 14 bond angle outliers are listed below:

Mol	Chain	Res	Type	Atoms	Z	Observed(°)	Ideal(°)
2	A	1855	FLC	CB-CG-CGC	-11.95	97.15	115.01
2	A	1855	FLC	OHB-CB-CG	-11.90	80.75	108.51
2	A	1855	FLC	CG-CB-CBC	8.43	128.27	111.21
2	A	1855	FLC	OHB-CB-CA	-6.73	92.80	108.51
3	A	1856	REL	O3-C3-C2	5.69	119.02	108.86

All (2) chirality outliers are listed below:

Mol	Chain	Res	Type	Atom
3	A	1856	REL	C2
3	A	1856	REL	C5

There are no torsion outliers.

There are no ring outliers.

## 5.7 Other polymers ⓘ

There are no such residues in this entry.

## 5.8 Polymer linkage issues

There are no chain breaks in this entry.

## 6 Fit of model and data

### 6.1 Protein, DNA and RNA chains

In the following table, the column labelled ‘#RSRZ> 2’ contains the number (and percentage) of RSRZ outliers, followed by percent RSRZ outliers for the chain as percentile scores relative to all X-ray entries and entries of similar resolution. The OWAB column contains the minimum, median, 95<sup>th</sup> percentile and maximum values of the occupancy-weighted average B-factor per residue. The column labelled ‘Q< 0.9’ lists the number of (and percentage) of residues with an average occupancy less than 0.9.

Mol	Chain	Analysed	<RSRZ>	#RSRZ>2	OWAB(Å <sup>2</sup> )	Q<0.9
1	A	811/856 (94%)	-0.10	8 (0%) 79 83	13, 23, 45, 78	0
1	B	809/856 (94%)	-0.08	21 (2%) 53 56	15, 25, 50, 79	0
All	All	1620/1712 (94%)	-0.09	29 (1%) 65 70	13, 25, 47, 79	0

The worst 5 of 29 RSRZ outliers are listed below:

Mol	Chain	Res	Type	RSRZ
1	B	112	ALA	6.4
1	A	113	GLY	4.7
1	A	111	SER	4.1
1	A	115	ILE	4.0
1	B	139	ILE	3.9

### 6.2 Non-standard residues in protein, DNA, RNA chains

There are no non-standard protein/DNA/RNA residues in this entry.

### 6.3 Carbohydrates

There are no carbohydrates in this entry.

### 6.4 Ligands

In the following table, the Atoms column lists the number of modelled atoms in the group and the number defined in the chemical component dictionary. LLDF column lists the quality of electron density of the group with respect to its neighbouring residues in protein, DNA or RNA chains. The B-factors column lists the minimum, median, 95<sup>th</sup> percentile and maximum values of B factors of atoms in the group. The column labelled ‘Q< 0.9’ lists the number of atoms with occupancy less than 0.9.

Mol	Type	Chain	Res	Atoms	RSR	LLDF	B-factors( $\text{\AA}^2$ )	Q<0.9
3	REL	A	1856	13/13	0.14	2.18	28,35,43,44	0
2	FLC	A	1855	13/13	0.11	0.57	27,33,45,52	0

## 6.5 Other polymers ⓘ

There are no such residues in this entry.