



Full wwPDB X-ray Structure Validation Report i

Feb 28, 2014 – 07:23 AM GMT

PDB ID : 3CBL
Title : Crystal structure of human feline sarcoma viral oncogene homologue (v-FES) in complex with staurosporine and a consensus peptide
Authors : Filippakopoulos, P.; Salah, E.; Cooper, C.; Picaud, S.S.; Elkins, J.M.; von Delft, F.; Arrowsmith, C.H.; Edwards, A.M.; Weigelt, J.; Bountra, C.; Knapp, S.; Structural Genomics Consortium (SGC)
Deposited on : 2008-02-22
Resolution : 1.75 Å(reported)

This is a full wwPDB validation report for a publicly released PDB entry.
We welcome your comments at validation@mail.wwpdb.org
A user guide is available at <http://wwpdb.org/ValidationPDFNotes.html>

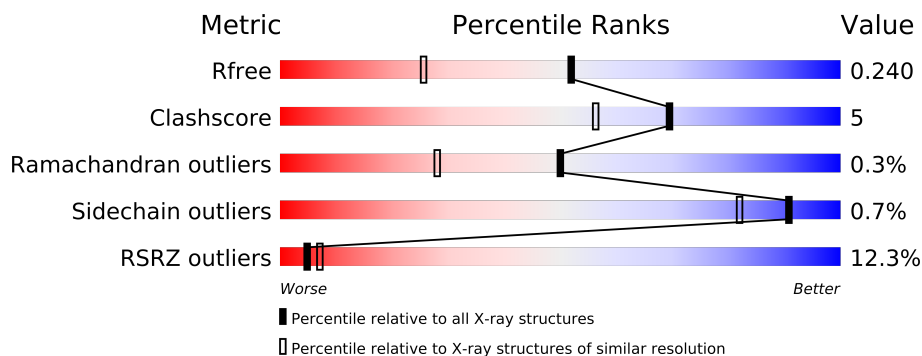
The following versions of software and data (see [references](#)) were used in the production of this report:

MolProbity : 4.02b-467
Mogul : 1.15 2013
Xtriage (Phenix) : dev-1323
EDS : stable22639
Percentile statistics : 21963
Refmac : 5.8.0049
CCP4 : 6.3.0 (Settle)
Ideal geometry (proteins) : Engh & Huber (2001)
Ideal geometry (DNA, RNA) : Parkinson et. al. (1996)
Validation Pipeline (wwPDB-VP) : stable22683

1 Overall quality at a glance

The reported resolution of this entry is 1.75 Å.

Percentile scores (ranging between 0-100) for global validation metrics of the entry are shown in the following graphic. The table shows the number of entries on which the scores are based.



Metric	Whole archive (#Entries)	Similar resolution (#Entries, resolution range(Å))
R_{free}	66092	1134 (1.76-1.76)
Clashscore	79885	1304 (1.76-1.76)
Ramachandran outliers	78287	1288 (1.76-1.76)
Sidechain outliers	78261	1288 (1.76-1.76)
RSRZ outliers	66119	1135 (1.76-1.76)

The table below summarises the geometric issues observed across the polymeric chains and their fit to the electron density. The red, orange, yellow and green segments on the lower bar indicate the fraction of residues that contain outliers for ≥ 3 , 2, 1 and 0 types of geometric quality criteria. The upper red bar (where present) indicates the fraction of residues that have poor fit to the electron density.

Mol	Chain	Length	Quality of chain
1	A	377	
2	B	6	

2 Entry composition i

There are 4 unique types of molecules in this entry. The entry contains 3304 atoms, of which 0 are hydrogen and 0 are deuterium.

In the tables below, the ZeroOcc column contains the number of atoms modelled with zero occupancy, the AltConf column contains the number of residues with at least one atom in alternate conformation and the Trace column contains the number of residues modelled with at most 2 atoms.

- Molecule 1 is a protein called Proto-oncogene tyrosine-protein kinase Fes/Fps.

Mol	Chain	Residues	Atoms					ZeroOcc	AltConf	Trace
			Total	C	N	O	S			
1	A	356	2824	1815	479	515	15	0	13	0

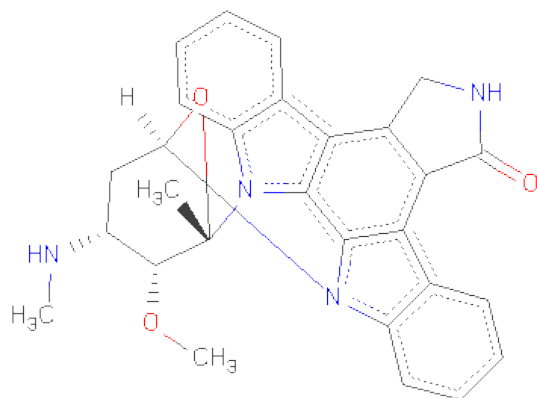
There are 2 discrepancies between the modelled and reference sequences:

Chain	Residue	Modelled	Actual	Comment	Reference
A	446	SER	-	EXPRESSION TAG	UNP P07332
A	447	MET	-	EXPRESSION TAG	UNP P07332

- Molecule 2 is a protein called Synthetic peptide.

Mol	Chain	Residues	Atoms				ZeroOcc	AltConf	Trace
			Total	C	N	O			
2	B	6	47	31	5	11	0	0	0

- Molecule 3 is STAUROSPORINE (three-letter code: STU) (formula: C₂₈H₂₆N₄O₃).



Mol	Chain	Residues	Atoms				ZeroOcc	AltConf
3	A	1	Total	C	N	O	0	0
			35	28	4	3		
3	A	1	Total	C	N	O	0	0
			35	28	4	3		
3	A	1	Total	C	N	O	0	0
			35	28	4	3		

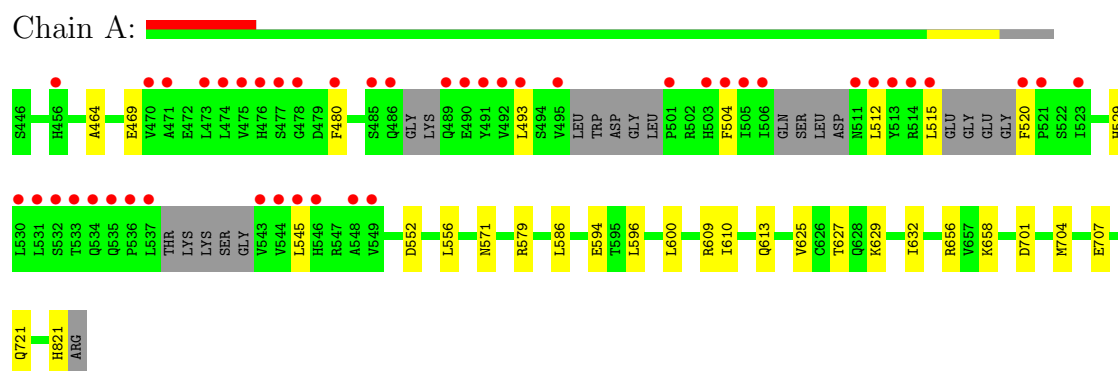
- Molecule 4 is water.

Mol	Chain	Residues	Atoms		ZeroOcc	AltConf
4	A	320	Total	O	0	0
			320	320		
4	B	8	Total	O	0	0
			8	8		

3 Residue-property plots

These plots are drawn for all protein, RNA and DNA chains in the entry. The first graphic for a chain summarises the proportions of errors displayed in the second graphic. The second graphic shows the sequence view annotated by issues in geometry and electron density. Residues are color-coded according to the number of geometric quality criteria for which they contain at least one outlier: green = 0, yellow = 1, orange = 2 and red = 3 or more. A red dot above a residue indicates a poor fit to the electron density ($RSRZ > 2$). Stretches of 2 or more consecutive residues without any outlier are shown as a green connector. Residues present in the sample, but not in the model, are shown in grey.

- Molecule 1: Proto-oncogene tyrosine-protein kinase Fes/Fps



- Molecule 2: Synthetic peptide

Chain B: 

There are no outlier residues recorded for this chain.

4 Data and refinement statistics

Property	Value	Source
Space group	P 21 21 21	Depositor
Cell constants a, b, c, α , β , γ	35.68Å 77.18Å 149.49Å 90.00° 90.00° 90.00°	Depositor
Resolution (Å)	38.58 – 1.75 38.59 – 1.75	Depositor EDS
% Data completeness (in resolution range)	99.1 (38.58-1.75) 99.1 (38.59-1.75)	Depositor EDS
R_{merge}	0.07	Depositor
R_{sym}	0.07	Depositor
$\langle I/\sigma(I) \rangle$ ¹	1.80 (at 1.75Å)	Xtriage
Refinement program	REFMAC 5.4.0066	Depositor
R, R_{free}	0.180 , 0.227 0.195 , 0.240	Depositor DCC
R_{free} test set	2141 reflections (5.33%)	DCC
Wilson B-factor (Å ²)	21.1	Xtriage
Anisotropy	0.040	Xtriage
Bulk solvent k_{sol} (e/Å ³), B_{sol} (Å ²)	0.37 , 70.2	EDS
Estimated twinning fraction	No twinning to report.	Xtriage
L-test for twinning	$\langle L \rangle = 0.48$, $\langle L^2 \rangle = 0.31$	Xtriage
Outliers	0 of 42304 reflections	Xtriage
F_o, F_c correlation	0.95	EDS
Total number of atoms	3304	wwPDB-VP
Average B, all atoms (Å ²)	39.0	wwPDB-VP

Xtriage's analysis on translational NCS is as follows: *The largest off-origin peak in the Patterson function is 7.21% of the height of the origin peak. No significant pseudotranslation is detected.*

¹Intensities estimated from amplitudes.

5 Model quality

5.1 Standard geometry

Bond lengths and bond angles in the following residue types are not validated in this section: STU, ACE

The Z score for a bond length (or angle) is the number of standard deviations the observed value is removed from the expected value. A bond length (or angle) with $|Z| > 5$ is considered an outlier worth inspection. RMSZ is the root-mean-square of all Z scores of the bond lengths (or angles).

Mol	Chain	Bond lengths		Bond angles	
		RMSZ	$\# Z > 5$	RMSZ	$\# Z > 5$
1	A	0.68	0/2935	0.73	2/3977 (0.1%)
2	B	0.78	0/45	0.81	0/59
All	All	0.68	0/2980	0.73	2/4036 (0.0%)

There are no bond length outliers.

All (2) bond angle outliers are listed below:

Mol	Chain	Res	Type	Atoms	Z	Observed(°)	Ideal(°)
1	A	556	LEU	CA-CB-CG	6.17	129.49	115.30
1	A	552	ASP	CB-CG-OD1	5.30	123.07	118.30

There are no chirality outliers.

There are no planarity outliers.

5.2 Close contacts

In the following table, the Non-H and H(model) columns list the number of non-hydrogen atoms and hydrogen atoms in the chain respectively. The H(added) column lists the number of hydrogens added by MolProbity. The Clashes column lists the number of clashes within the asymmetric unit, and the number in parentheses is this value normalized per 1000 atoms of the molecule in the chain. The Symm-Clashes column gives symmetry related clashes, in the same way as for the Clashes column.

Mol	Chain	Non-H	H(model)	H(added)	Clashes	Symm-Clashes
1	A	2824	0	2778	22	0
2	B	47	0	45	0	0
3	A	105	0	78	6	0
4	A	320	0	0	2	0
4	B	8	0	0	1	0

Continued on next page...

Continued from previous page...

Mol	Chain	Non-H	H(model)	H(added)	Clashes	Symm-Clashes
All	All	3304	0	2901	28	0

Clashscore is defined as the number of clashes calculated for the entry per 1000 atoms (including hydrogens) of the entry. The overall clashscore for this entry is 5.

All (28) close contacts within the same asymmetric unit are listed below.

Atom-1	Atom-2	Distance(Å)	Clash(Å)
3:A:902:STU:H261	3:A:902:STU:H16	1.63	0.81
1:A:627:THR:HA	1:A:632:ILE:HD12	1.62	0.80
1:A:704[A]:MET:HE2	4:A:321:HOH:O	1.87	0.74
3:A:903:STU:H16	3:A:903:STU:H261	1.74	0.68
1:A:704[A]:MET:CE	4:A:321:HOH:O	2.44	0.63
3:A:901:STU:H16	3:A:901:STU:H261	1.80	0.63
1:A:480:PHE:CG	1:A:545:LEU:HD22	2.34	0.63
1:A:625:VAL:HG12	1:A:627:THR:HG23	1.81	0.62
1:A:721:GLN:HG2	4:B:169:HOH:O	2.03	0.59
1:A:493:LEU:HD23	1:A:515:LEU:HD11	1.84	0.59
1:A:629:LYS:O	1:A:632:ILE:HD13	2.03	0.58
1:A:464:ALA:HB3	1:A:632:ILE:HD11	1.88	0.55
1:A:469:GLU:OE1	1:A:609:ARG:NH2	2.40	0.54
3:A:902:STU:C26	3:A:902:STU:H16	2.38	0.53
1:A:493:LEU:CD2	1:A:515:LEU:HD11	2.40	0.51
1:A:504:PHE:HB3	1:A:515:LEU:HD22	1.92	0.50
1:A:480:PHE:CD1	1:A:545:LEU:HD22	2.47	0.49
1:A:579:ARG:HG2	1:A:586:LEU:HD23	1.95	0.49
1:A:571[B]:ASN:ND2	1:A:721:GLN:HE22	2.13	0.46
1:A:613:GLN:NE2	1:A:707[B]:GLU:OE2	2.38	0.46
1:A:512:LEU:HD23	1:A:520:PHE:C	2.36	0.46
1:A:520:PHE:CZ	1:A:529:HIS:CB	2.99	0.45
1:A:656:ARG:HD3	1:A:658:LYS:HZ3	1.83	0.44
3:A:903:STU:H16	3:A:903:STU:C26	2.45	0.42
3:A:902:STU:C26	3:A:902:STU:C16	2.98	0.41
1:A:610:ILE:CD1	1:A:707[B]:GLU:HG3	2.51	0.41
1:A:596:LEU:HD22	1:A:600:LEU:HD23	2.02	0.41
1:A:464:ALA:CB	1:A:632:ILE:HD11	2.51	0.40

There are no symmetry-related clashes.

5.3 Torsion angles

5.3.1 Protein backbone ⓘ

In the following table, the Percentiles column shows the percent Ramachandran outliers of the chain as a percentile score with respect to all X-ray entries followed by that with respect to entries of similar resolution. The Analysed column shows the number of residues for which the backbone conformation was analysed, and the total number of residues.

Mol	Chain	Analysed	Favoured	Allowed	Outliers	Percentiles	
1	A	357/377 (95%)	349 (98%)	7 (2%)	1 (0%)	50	28
2	B	4/6 (67%)	4 (100%)	0	0	100	100
All	All	361/383 (94%)	353 (98%)	7 (2%)	1 (0%)	50	28

All (1) Ramachandran outliers are listed below:

Mol	Chain	Res	Type
1	A	701	ASP

5.3.2 Protein sidechains ⓘ

In the following table, the Percentiles column shows the percent sidechain outliers of the chain as a percentile score with respect to all X-ray entries followed by that with respect to entries of similar resolution. The Analysed column shows the number of residues for which the sidechain conformation was analysed, and the total number of residues.

Mol	Chain	Analysed	Rotameric	Outliers	Percentiles	
1	A	305/327 (93%)	303 (99%)	2 (1%)	91	82
2	B	5/5 (100%)	5 (100%)	0	100	100
All	All	310/332 (93%)	308 (99%)	2 (1%)	91	85

All (2) residues with a non-rotameric sidechain are listed below:

Mol	Chain	Res	Type
1	A	594	GLU
1	A	821	HIS

Some sidechains can be flipped to improve hydrogen bonding and reduce clashes. There are no such sidechains identified.

5.3.3 RNA ⓘ

There are no RNA chains in this entry.

5.4 Non-standard residues in protein, DNA, RNA chains ⓘ

There are no non-standard protein/DNA/RNA residues in this entry.

5.5 Carbohydrates ⓘ

There are no carbohydrates in this entry.

5.6 Ligand geometry ⓘ

3 ligands are modelled in this entry.

In the following table, the Counts columns list the number of bonds (or angles) for which Mogul statistics could be retrieved, the number of bonds (or angles) that are observed in the model and the number of bonds (or angles) that are defined in the chemical component dictionary. The Link column lists molecule types, if any, to which the group is linked. The Z score for a bond length (or angle) is the number of standard deviations the observed value is removed from the expected value. A bond length (or angle) with $|Z| > 2$ is considered an outlier worth inspection. RMSZ is the root-mean-square of all Z scores of the bond lengths (or angles).

Mol	Type	Chain	Res	Link	Bond lengths			Bond angles		
					Counts	RMSZ	$\# Z > 2$	Counts	RMSZ	$\# Z > 2$
3	STU	A	901	-	40,42,42	1.77	11 (27%)	62,68,68	2.40	10 (16%)
3	STU	A	902	-	40,42,42	1.82	9 (22%)	62,68,68	2.05	14 (22%)
3	STU	A	903	-	40,42,42	2.28	10 (25%)	62,68,68	2.56	13 (20%)

In the following table, the Chirals column lists the number of chiral outliers, the number of chiral centers analysed, the number of these observed in the model and the number defined in the chemical component dictionary. Similar counts are reported in the Torsion and Rings columns. '-' means no outliers of that kind were identified.

Mol	Type	Chain	Res	Link	Chirals	Torsions	Rings
3	STU	A	901	-	-	0/4/42/42	0/0/8/8
3	STU	A	902	-	-	0/4/42/42	0/0/8/8
3	STU	A	903	-	-	0/4/42/42	0/0/8/8

All (30) bond length outliers are listed below:

Mol	Chain	Res	Type	Atoms	Z	Observed(Å)	Ideal(Å)
3	A	903	STU	C21-C22	6.57	1.61	1.53
3	A	902	STU	C21-C22	6.15	1.61	1.53
3	A	903	STU	C20-N3	-5.12	1.32	1.39
3	A	903	STU	C7-C8	-4.79	1.40	1.49
3	A	903	STU	C24-C25	4.73	1.58	1.51
3	A	901	STU	C7-C8	-4.50	1.41	1.49
3	A	902	STU	C7-C8	-4.00	1.42	1.49
3	A	903	STU	C17-N2	-3.98	1.34	1.39
3	A	903	STU	C19-N3	-3.88	1.34	1.39
3	A	901	STU	C20-N3	-3.87	1.34	1.39
3	A	902	STU	C20-N3	-3.87	1.34	1.39
3	A	903	STU	C26-C21	3.27	1.55	1.51
3	A	903	STU	C18-N2	-3.19	1.35	1.39
3	A	901	STU	C24-C25	3.17	1.56	1.51
3	A	901	STU	C18-N2	-3.01	1.35	1.39
3	A	902	STU	C11-C18	-2.55	1.39	1.42
3	A	902	STU	C17-N2	-2.53	1.36	1.39
3	A	901	STU	C6-C19	-2.47	1.39	1.42
3	A	901	STU	C17-N2	-2.47	1.36	1.39
3	A	901	STU	C19-N3	-2.45	1.36	1.39
3	A	901	STU	C3-C4	2.43	1.42	1.36
3	A	902	STU	C19-N3	-2.37	1.36	1.39
3	A	902	STU	C9-N1	2.33	1.48	1.45
3	A	901	STU	C7-C6	-2.32	1.39	1.43
3	A	903	STU	C11-C18	-2.28	1.39	1.42
3	A	903	STU	C8-N1	-2.27	1.31	1.34
3	A	902	STU	C18-N2	-2.25	1.36	1.39
3	A	901	STU	C21-C22	2.16	1.56	1.53
3	A	902	STU	C3-C4	2.08	1.41	1.36
3	A	901	STU	C26-C21	2.06	1.54	1.51

All (37) bond angle outliers are listed below:

Mol	Chain	Res	Type	Atoms	Z	Observed(°)	Ideal(°)
3	A	903	STU	C26-C21-N2	11.54	117.34	111.09
3	A	901	STU	C28-N4-C23	10.51	119.69	113.82
3	A	901	STU	C26-C21-N2	10.12	116.57	111.09
3	A	903	STU	C6-C7-C8	6.78	134.21	128.93
3	A	903	STU	C22-C21-N2	-6.39	103.41	112.78
3	A	902	STU	C6-C7-C8	5.82	133.46	128.93
3	A	901	STU	C6-C7-C8	5.74	133.40	128.93
3	A	903	STU	C24-C25-N3	5.51	118.82	112.48
3	A	902	STU	C26-C21-N2	5.35	113.98	111.09

Continued on next page...

Continued from previous page...

Mol	Chain	Res	Type	Atoms	Z	Observed(°)	Ideal(°)
3	A	902	STU	C22-C21-N2	-5.30	105.00	112.78
3	A	903	STU	C28-N4-C23	5.10	116.67	113.82
3	A	902	STU	C7-C8-N1	5.01	111.84	106.39
3	A	903	STU	O5-C8-N1	-4.54	119.11	125.50
3	A	901	STU	C24-C25-N3	4.36	117.49	112.48
3	A	903	STU	C7-C8-N1	4.32	111.08	106.39
3	A	902	STU	O5-C8-N1	-3.99	119.90	125.50
3	A	902	STU	O4-C25-C24	3.93	118.28	112.00
3	A	902	STU	C28-N4-C23	3.68	115.88	113.82
3	A	902	STU	O6-C22-C21	3.68	116.62	108.27
3	A	902	STU	C9-N1-C8	-3.67	108.67	113.15
3	A	903	STU	O6-C22-C21	3.53	116.28	108.27
3	A	901	STU	O6-C22-C21	3.46	116.11	108.27
3	A	901	STU	C22-C21-N2	-3.45	107.71	112.78
3	A	901	STU	C7-C8-N1	3.16	109.83	106.39
3	A	902	STU	C26-C21-C22	-2.96	105.81	112.87
3	A	901	STU	O6-C22-C23	-2.80	101.89	108.14
3	A	902	STU	O6-C22-C23	-2.79	101.91	108.14
3	A	903	STU	C11-C18-C19	-2.55	119.04	121.20
3	A	902	STU	C25-C24-C23	-2.55	108.69	112.35
3	A	902	STU	C6-C19-C18	-2.29	119.26	121.20
3	A	903	STU	C10-C7-C6	-2.16	118.27	120.39
3	A	901	STU	C19-N3-C20	2.13	110.39	106.19
3	A	903	STU	C16-C17-C12	-2.11	117.69	120.73
3	A	903	STU	C26-C21-C22	-2.09	107.90	112.87
3	A	901	STU	C16-C17-C12	-2.08	117.73	120.73
3	A	903	STU	C7-C6-C19	-2.03	118.76	121.81
3	A	902	STU	C16-C17-C12	-2.00	117.84	120.73

There are no chirality outliers.

There are no torsion outliers.

There are no ring outliers.

5.7 Other polymers ⓘ

There are no such residues in this entry.

5.8 Polymer linkage issues

There are no chain breaks in this entry.

6 Fit of model and data ⓘ

6.1 Protein, DNA and RNA chains ⓘ

In the following table, the column labelled ‘#RSRZ> 2’ contains the number (and percentage) of RSRZ outliers, followed by percent RSRZ outliers for the chain as percentile scores relative to all X-ray entries and entries of similar resolution. The OWAB column contains the minimum, median, 95th percentile and maximum values of the occupancy-weighted average B-factor per residue. The column labelled ‘Q< 0.9’ lists the number of (and percentage) of residues with an average occupancy less than 0.9.

Mol	Chain	Analysed	<RSRZ>	#RSRZ>2	OWAB(Å ²)	Q<0.9
1	A	356/377 (94%)	0.53	45 (12%) 4 7	24, 37, 52, 63	0
2	B	6/6 (100%)	-0.50	0 100 100	31, 35, 39, 51	0
All	All	362/383 (94%)	0.51	45 (12%) 5 7	24, 37, 52, 63	0

All (45) RSRZ outliers are listed below:

Mol	Chain	Res	Type	RSRZ
1	A	515	LEU	7.6
1	A	545	LEU	7.3
1	A	489	GLN	6.9
1	A	512	LEU	6.7
1	A	544	VAL	6.6
1	A	471	ALA	6.2
1	A	506	ILE	6.1
1	A	480	PHE	5.5
1	A	546	HIS	5.3
1	A	475	VAL	5.3
1	A	530	LEU	5.2
1	A	537	LEU	5.2
1	A	513	TYR	5.2
1	A	478	GLY	5.1
1	A	477	SER	5.0
1	A	543	VAL	4.7
1	A	473	LEU	4.4
1	A	504	PHE	4.4
1	A	495	VAL	4.3
1	A	520	PHE	4.1
1	A	511	ASN	4.1
1	A	486	GLN	4.0
1	A	531	LEU	4.0
1	A	536	PRO	3.9

Continued on next page...

Continued from previous page...

Mol	Chain	Res	Type	RSRZ
1	A	521	PRO	3.8
1	A	505	ILE	3.6
1	A	493	LEU	3.6
1	A	534	GLN	3.3
1	A	549	VAL	3.3
1	A	474	LEU	3.3
1	A	470	VAL	3.2
1	A	503	HIS	3.1
1	A	523	ILE	2.9
1	A	535	GLN	2.9
1	A	501	PRO	2.9
1	A	533	THR	2.6
1	A	456	HIS	2.6
1	A	490	GLU	2.4
1	A	476	HIS	2.4
1	A	492	VAL	2.4
1	A	485	SER	2.2
1	A	532	SER	2.2
1	A	514	ARG	2.1
1	A	548	ALA	2.0
1	A	491	TYR	2.0

6.2 Non-standard residues in protein, DNA, RNA chains ⓘ

There are no non-standard protein/DNA/RNA residues in this entry.

6.3 Carbohydrates ⓘ

There are no carbohydrates in this entry.

6.4 Ligands ⓘ

In the following table, the Atoms column lists the number of modelled atoms in the group and the number defined in the chemical component dictionary. LLDF column lists the quality of electron density of the group with respect to its neighbouring residues in protein, DNA or RNA chains. The B-factors column lists the minimum, median, 95th percentile and maximum values of B factors of atoms in the group. The column labelled 'Q< 0.9' lists the number of atoms with occupancy less than 0.9.

Mol	Type	Chain	Res	Atoms	RSR	LLDF	B-factors(Å ²)	Q<0.9
3	STU	A	902	35/35	0.09	-0.05	24,30,34,38	0

Continued on next page...

Continued from previous page...

Mol	Type	Chain	Res	Atoms	RSR	LLDF	B-factors(\AA^2)	Q<0.9
3	STU	A	903	35/35	0.10	-0.36	30,35,43,47	0
3	STU	A	901	35/35	0.08	-1.35	18,22,27,36	0

6.5 Other polymers ⓘ

There are no such residues in this entry.