



Full wwPDB X-ray Structure Validation Report

Feb 26, 2014 – 11:37 PM GMT

PDB ID : 1CCC
Title : THE ASP-HIS-FE TRIAD OF CYTOCHROME C PEROXIDASE CONTROLS THE REDUCTION POTENTIAL, ELECTRONIC STRUCTURE, AND COUPLING OF THE TRYPTOPHAN FREE-RADICAL TO THE HEME
Authors : Goodin, D.B.; Mcree, D.E.
Deposited on : 1993-01-04
Resolution : 2.00 Å(reported)

This is a full wwPDB validation report for a publicly released PDB entry.
We welcome your comments at validation@mail.wwpdb.org
A user guide is available at <http://wwpdb.org/ValidationPDFNotes.html>

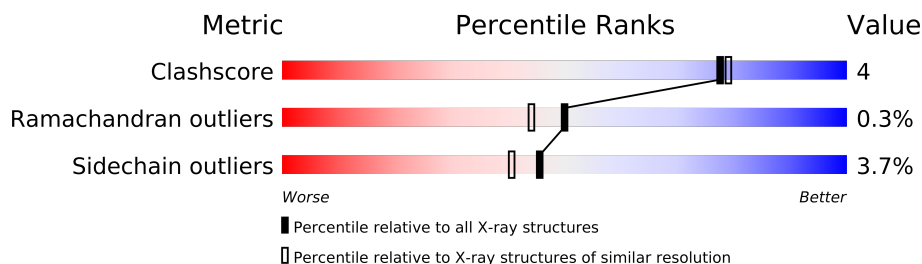
The following versions of software and data (see [references](#)) were used in the production of this report:

MolProbity : 4.02b-467
Mogul : 1.15 2013
Xtriage (Phenix) : **NOT EXECUTED**
EDS : **NOT EXECUTED**
Percentile statistics : 21963
Ideal geometry (proteins) : Engh & Huber (2001)
Ideal geometry (DNA, RNA) : Parkinson et. al. (1996)
Validation Pipeline (wwPDB-VP) : stable22683

1 Overall quality at a glance

The reported resolution of this entry is 2.00 Å.


Percentile scores (ranging between 0-100) for global validation metrics of the entry are shown in the following graphic. The table shows the number of entries on which the scores are based.



Metric	Whole archive (#Entries)	Similar resolution (#Entries, resolution range(Å))
Clashscore	79885	6188 (2.00-2.00)
Ramachandran outliers	78287	6102 (2.00-2.00)
Sidechain outliers	78261	6100 (2.00-2.00)

The table below summarises the geometric issues observed across the polymeric chains and their fit to the electron density. The red, orange, yellow and green segments on the lower bar indicate the fraction of residues that contain outliers for ≥ 3 , 2, 1 and 0 types of geometric quality criteria. The upper red bar (where present) indicates the fraction of residues that have poor fit to the electron density.

Note EDS was not executed.

Mol	Chain	Length	Quality of chain
1	A	297	

2 Entry composition i

There are 3 unique types of molecules in this entry. The entry contains 2943 atoms, of which 504 are hydrogens and 0 are deuterium.

In the tables below, the ZeroOcc column contains the number of atoms modelled with zero occupancy, the AltConf column contains the number of residues with at least one atom in alternate conformation and the Trace column contains the number of residues modelled with at most 2 atoms.

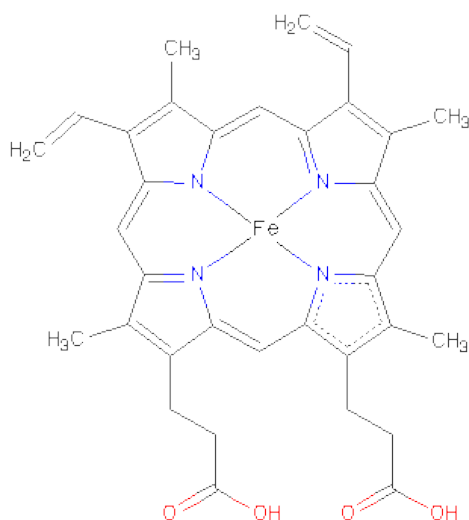
- Molecule 1 is a protein called CYTOCHROME C PEROXIDASE.

Mol	Chain	Residues	Atoms						ZeroOcc	AltConf	Trace
			Total	C	H	N	O	S			
1	A	291	2849	1500	504	390	449	6	0	0	0

There are 3 discrepancies between the modelled and reference sequences:

Chain	Residue	Modelled	Actual	Comment	Reference
A	53	ILE	THR	CONFLICT	UNP P00431
A	152	GLY	ASP	CONFLICT	UNP P00431
A	235	ALA	ASP	CONFLICT	UNP P00431

- Molecule 2 is PROTOPORPHYRIN IX CONTAINING FE (three-letter code: HEM) (formula: $C_{34}H_{32}FeN_4O_4$).



Mol	Chain	Residues	Atoms					ZeroOcc	AltConf
			Total	C	Fe	N	O		
2	A	1	43	34	1	4	4	0	0

- Molecule 3 is water.

Mol	Chain	Residues	Atoms		ZeroOcc	AltConf
3	A	51	Total	O	0	0
			51	51		

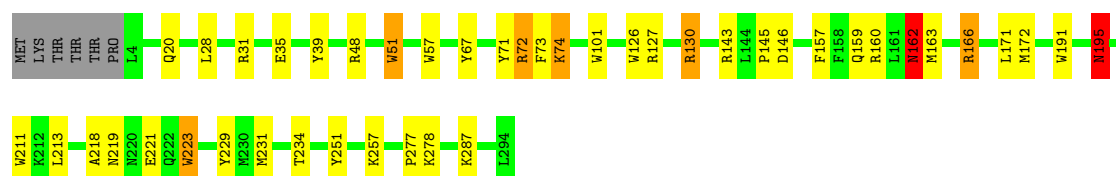
3 Residue-property plots

These plots are drawn for all protein, RNA and DNA chains in the entry. The first graphic for a chain summarises the proportions of errors displayed in the second graphic. The second graphic shows the sequence view annotated by issues in geometry and electron density. Residues are color-coded according to the number of geometric quality criteria for which they contain at least one outlier: green = 0, yellow = 1, orange = 2 and red = 3 or more. A red dot above a residue indicates a poor fit to the electron density ($RSRZ > 2$). Stretches of 2 or more consecutive residues without any outlier are shown as a green connector. Residues present in the sample, but not in the model, are shown in grey.

Note EDS was not executed.

• Molecule 1: CYTOCHROME C PEROXIDASE

Chain A: 



4 Data and refinement statistics

Xtriage (Phenix) and EDS were not executed - this section will therefore be incomplete.

Property	Value	Source
Space group	P 21 21 21	Depositor
Cell constants a, b, c, α , β , γ	105.20Å 74.30Å 45.40Å 90.00° 90.00° 90.00°	Depositor
Resolution (Å)	(Not available) – 2.00	Depositor
% Data completeness (in resolution range)	(Not available) ((Not available)-2.00)	Depositor
R_{merge}	(Not available)	Depositor
R_{sym}	(Not available)	Depositor
Refinement program	X-PLOR	Depositor
R, R_{free}	0.190 , (Not available)	Depositor
Estimated twinning fraction	No twinning to report.	Xtriage
Total number of atoms	2943	wwPDB-VP
Average B, all atoms (Å ²)	17.0	wwPDB-VP

5 Model quality i

5.1 Standard geometry i

Bond lengths and bond angles in the following residue types are not validated in this section: HEM

The Z score for a bond length (or angle) is the number of standard deviations the observed value is removed from the expected value. A bond length (or angle) with $|Z| > 5$ is considered an outlier worth inspection. RMSZ is the root-mean-square of all Z scores of the bond lengths (or angles).

Mol	Chain	Bond lengths		Bond angles	
		RMSZ	$\# Z > 5$	RMSZ	$\# Z > 5$
1	A	0.86	0/2411	1.57	45/3264 (1.4%)

Chiral center outliers are detected by calculating the chiral volume of a chiral center and verifying if the center is modelled as a planar moiety or with the opposite hand. A planarity outlier is detected by checking planarity of atoms in a peptide group, atoms in a mainchain group or atoms of a sidechain that are expected to be planar.

Mol	Chain	#Chirality outliers	#Planarity outliers
1	A	0	2

There are no bond length outliers.

All (45) bond angle outliers are listed below:

Mol	Chain	Res	Type	Atoms	Z	Observed(°)	Ideal(°)
1	A	48	ARG	NE-CZ-NH1	10.97	125.78	120.30
1	A	31	ARG	NE-CZ-NH2	-8.93	115.84	120.30
1	A	191	TRP	CD1-CG-CD2	8.80	113.34	106.30
1	A	31	ARG	NE-CZ-NH1	8.78	124.69	120.30
1	A	191	TRP	CE2-CD2-CG	-8.55	100.46	107.30
1	A	127	ARG	NE-CZ-NH2	-8.20	116.20	120.30
1	A	223	TRP	CD1-CG-CD2	8.12	112.80	106.30
1	A	101	TRP	CD1-CG-CD2	7.83	112.57	106.30
1	A	126	TRP	CD1-CG-CD2	7.72	112.47	106.30
1	A	278	LYS	CA-CB-CG	-7.67	96.54	113.40
1	A	211	TRP	CD1-CG-CD2	7.56	112.35	106.30
1	A	229	TYR	CB-CG-CD2	-7.54	116.48	121.00
1	A	143	ARG	NE-CZ-NH2	-7.52	116.54	120.30
1	A	191	TRP	CB-CG-CD1	-7.47	117.29	127.00
1	A	127	ARG	NE-CZ-NH1	7.45	124.02	120.30
1	A	223	TRP	CE2-CD2-CG	-7.32	101.44	107.30

Continued on next page...

Continued from previous page...

Mol	Chain	Res	Type	Atoms	Z	Observed(°)	Ideal(°)
1	A	51	TRP	CD1-CG-CD2	7.28	112.12	106.30
1	A	57	TRP	CE2-CD2-CG	-7.23	101.52	107.30
1	A	101	TRP	CE2-CD2-CG	-7.19	101.55	107.30
1	A	51	TRP	CE2-CD2-CG	-7.12	101.60	107.30
1	A	57	TRP	CD1-CG-CD2	6.93	111.84	106.30
1	A	191	TRP	CG-CD2-CE3	6.86	140.07	133.90
1	A	172	MET	CG-SD-CE	-6.83	89.27	100.20
1	A	143	ARG	NE-CZ-NH1	6.81	123.71	120.30
1	A	211	TRP	CE2-CD2-CG	-6.56	102.06	107.30
1	A	126	TRP	CE2-CD2-CG	-6.47	102.12	107.30
1	A	130	ARG	CG-CD-NE	-6.43	98.31	111.80
1	A	163	MET	CG-SD-CE	-6.38	89.99	100.20
1	A	162	ASN	CA-C-N	-6.26	103.42	117.20
1	A	195	ASN	N-CA-C	6.16	127.62	111.00
1	A	160	ARG	NE-CZ-NH2	-5.98	117.31	120.30
1	A	51	TRP	CB-CG-CD1	-5.95	119.27	127.00
1	A	251	TYR	CB-CG-CD2	-5.90	117.46	121.00
1	A	101	TRP	CB-CG-CD1	-5.82	119.43	127.00
1	A	160	ARG	NE-CZ-NH1	5.82	123.21	120.30
1	A	51	TRP	CG-CD1-NE1	-5.63	104.47	110.10
1	A	48	ARG	NE-CZ-NH2	-5.58	117.51	120.30
1	A	71	TYR	CB-CG-CD2	-5.54	117.67	121.00
1	A	101	TRP	CG-CD1-NE1	-5.45	104.65	110.10
1	A	101	TRP	CG-CD2-CE3	5.27	138.65	133.90
1	A	277	PRO	CA-C-N	5.21	128.67	117.20
1	A	51	TRP	CG-CD2-CE3	5.14	138.53	133.90
1	A	162	ASN	N-CA-C	5.12	124.82	111.00
1	A	223	TRP	CG-CD1-NE1	-5.06	105.04	110.10
1	A	191	TRP	CG-CD1-NE1	-5.02	105.08	110.10

There are no chirality outliers.

All (2) planarity outliers are listed below:

Mol	Chain	Res	Type	Group
1	A	39	TYR	Sidechain
1	A	72	ARG	Sidechain

5.2 Close contacts ⓘ

In the following table, the Non-H and H(model) columns list the number of non-hydrogen atoms and hydrogen atoms in the chain respectively. The H(added) column lists the number of hydrogens

added by MolProbity. The Clashes column lists the number of clashes within the asymmetric unit, and the number in parentheses is this value normalized per 1000 atoms of the molecule in the chain. The Symm-Clashes column gives symmetry related clashes, in the same way as for the Clashes column.

Mol	Chain	Non-H	H(model)	H(added)	Clashes	Symm-Clashes
1	A	2345	504	1716	17	0
2	A	43	0	30	0	0
3	A	51	0	0	3	0
All	All	2439	504	1746	17	0

Clashscore is defined as the number of clashes calculated for the entry per 1000 atoms (including hydrogens) of the entry. The overall clashscore for this entry is 4.

All (17) close contacts within the same asymmetric unit are listed below.

Atom-1	Atom-2	Distance(Å)	Clash(Å)
1:A:146:ASP:O	1:A:234:THR:HG21	2.00	0.61
1:A:195:ASN:HB3	3:A:308:HOH:O	2.02	0.59
1:A:74:LYS:H	1:A:74:LYS:HD2	1.67	0.59
1:A:145:PRO:HD3	1:A:157:PHE:CZ	2.42	0.55
1:A:130:ARG:NE	3:A:326:HOH:O	2.41	0.53
1:A:166:ARG:HH21	1:A:257:LYS:HZ2	1.62	0.48
1:A:20:GLN:HE21	1:A:287:LYS:N	2.13	0.47
1:A:67:TYR:HA	1:A:130:ARG:HG2	1.97	0.46
1:A:20:GLN:HE21	1:A:287:LYS:H	1.65	0.45
1:A:166:ARG:HH21	1:A:257:LYS:NZ	2.14	0.45
1:A:223:TRP:HB2	1:A:231:MET:HB2	2.00	0.42
1:A:130:ARG:CZ	3:A:326:HOH:O	2.68	0.42
1:A:218:ALA:O	1:A:219:ASN:HB2	2.19	0.42
1:A:20:GLN:NE2	1:A:287:LYS:H	2.18	0.41
1:A:72:ARG:NH1	1:A:73:PHE:CZ	2.88	0.41
1:A:67:TYR:O	1:A:130:ARG:HB3	2.21	0.41
1:A:213:LEU:HD11	1:A:221:GLU:HB3	2.04	0.40

There are no symmetry-related clashes.

5.3 Torsion angles

5.3.1 Protein backbone ⓘ

In the following table, the Percentiles column shows the percent Ramachandran outliers of the chain as a percentile score with respect to all X-ray entries followed by that with respect to entries of similar resolution. The Analysed column shows the number of residues for which the backbone conformation was analysed, and the total number of residues.

Mol	Chain	Analysed	Favoured	Allowed	Outliers	Percentiles
1	A	289/297 (97%)	281 (97%)	7 (2%)	1 (0%)	50 44

All (1) Ramachandran outliers are listed below:

Mol	Chain	Res	Type
1	A	162	ASN

5.3.2 Protein sidechains ⓘ

In the following table, the Percentiles column shows the percent sidechain outliers of the chain as a percentile score with respect to all X-ray entries followed by that with respect to entries of similar resolution. The Analysed column shows the number of residues for which the sidechain conformation was analysed, and the total number of residues.

Mol	Chain	Analysed	Rotameric	Outliers	Percentiles
1	A	246/254 (97%)	237 (96%)	9 (4%)	45 40

All (9) residues with a non-rotameric sidechain are listed below:

Mol	Chain	Res	Type
1	A	28	LEU
1	A	35	GLU
1	A	51	TRP
1	A	74	LYS
1	A	159	GLN
1	A	162	ASN
1	A	166	ARG
1	A	171	LEU
1	A	195	ASN

Some sidechains can be flipped to improve hydrogen bonding and reduce clashes. All (8) such sidechains are listed below:

Mol	Chain	Res	Type
1	A	6	HIS
1	A	20	GLN
1	A	24	ASN
1	A	87	ASN
1	A	195	ASN
1	A	220	ASN
1	A	255	GLN
1	A	292	GLN

5.3.3 RNA ⓘ

There are no RNA chains in this entry.

5.4 Non-standard residues in protein, DNA, RNA chains ⓘ

There are no non-standard protein/DNA/RNA residues in this entry.

5.5 Carbohydrates ⓘ

There are no carbohydrates in this entry.

5.6 Ligand geometry ⓘ

1 ligand is modelled in this entry.

In the following table, the Counts columns list the number of bonds (or angles) for which Mogul statistics could be retrieved, the number of bonds (or angles) that are observed in the model and the number of bonds (or angles) that are defined in the chemical component dictionary. The Link column lists molecule types, if any, to which the group is linked. The Z score for a bond length (or angle) is the number of standard deviations the observed value is removed from the expected value. A bond length (or angle) with $|Z| > 2$ is considered an outlier worth inspection. RMSZ is the root-mean-square of all Z scores of the bond lengths (or angles).

Mol	Type	Chain	Res	Link	Bond lengths			Bond angles		
					Counts	RMSZ	# $ Z > 2$	Counts	RMSZ	# $ Z > 2$
2	HEM	A	295	1,3	49,50,50	5.10	23 (46%)	46,82,82	1.33	4 (8%)

In the following table, the Chirals column lists the number of chiral outliers, the number of chiral centers analysed, the number of these observed in the model and the number defined in the chemical component dictionary. Similar counts are reported in the Torsion and Rings columns. '-' means no outliers of that kind were identified.

Mol	Type	Chain	Res	Link	Chirals	Torsions	Rings
2	HEM	A	295	1,3	-	0/14/114/114	0/0/8/8

All (23) bond length outliers are listed below:

Mol	Chain	Res	Type	Atoms	Z	Observed(Å)	Ideal(Å)
2	A	295	HEM	C2D-C1D	-22.82	1.38	1.44
2	A	295	HEM	C3D-C4D	-18.73	1.39	1.44
2	A	295	HEM	C2B-C1B	-14.47	1.40	1.44
2	A	295	HEM	CHB-C1B	4.13	1.41	1.35

Continued on next page...

Continued from previous page...

Mol	Chain	Res	Type	Atoms	Z	Observed(Å)	Ideal(Å)
2	A	295	HEM	C1A-C2A	-3.93	1.36	1.43
2	A	295	HEM	C3B-C4B	-3.81	1.39	1.44
2	A	295	HEM	C4C-NC	-3.31	1.33	1.38
2	A	295	HEM	FE-NA	3.15	2.05	1.92
2	A	295	HEM	CHA-C4D	3.07	1.40	1.35
2	A	295	HEM	C4D-ND	-3.07	1.33	1.39
2	A	295	HEM	FE-ND	3.06	2.09	1.97
2	A	295	HEM	CBC-CAC	2.99	1.46	1.28
2	A	295	HEM	C1B-NB	-2.79	1.33	1.39
2	A	295	HEM	C3D-C2D	-2.57	1.39	1.43
2	A	295	HEM	FE-NB	2.53	2.07	1.97
2	A	295	HEM	CBB-CAB	2.46	1.43	1.28
2	A	295	HEM	CMC-C2C	2.42	1.54	1.47
2	A	295	HEM	O2D-CGD	-2.24	1.22	1.30
2	A	295	HEM	O2A-CGA	-2.19	1.22	1.30
2	A	295	HEM	CHC-C1C	2.14	1.40	1.36
2	A	295	HEM	C3B-C2B	-2.11	1.40	1.43
2	A	295	HEM	CHD-C4C	2.11	1.40	1.36
2	A	295	HEM	C4B-NB	-2.09	1.32	1.37

All (4) bond angle outliers are listed below:

Mol	Chain	Res	Type	Atoms	Z	Observed(°)	Ideal(°)
2	A	295	HEM	C3B-C4B-NB	-3.96	111.17	114.00
2	A	295	HEM	CMA-C3A-C4A	-2.35	125.00	128.62
2	A	295	HEM	O2A-CGA-O1A	-2.35	117.32	123.30
2	A	295	HEM	O2A-CGA-CBA	2.13	121.76	114.22

There are no chirality outliers.

There are no torsion outliers.

There are no ring outliers.

5.7 Other polymers ⓘ

There are no such residues in this entry.

5.8 Polymer linkage issues

There are no chain breaks in this entry.

6 Fit of model and data

6.1 Protein, DNA and RNA chains

EDS was not executed - this section will therefore be empty.

6.2 Non-standard residues in protein, DNA, RNA chains

EDS was not executed - this section will therefore be empty.

6.3 Carbohydrates

EDS was not executed - this section will therefore be empty.

6.4 Ligands

EDS was not executed - this section will therefore be empty.

6.5 Other polymers

EDS was not executed - this section will therefore be empty.