



Full wwPDB X-ray Structure Validation Report ⓘ

Feb 26, 2014 – 11:37 PM GMT

PDB ID : 1CCR
Title : STRUCTURE OF RICE FERRICCYTOCHROME C AT 2.0 ANGSTROMS
RESOLUTION
Authors : Ochi, H.; Hata, Y.; Tanaka, N.; Kakudo, M.; Sakurai, T.; Aihara, S.; Morita,
Y.
Deposited on : 1983-03-14
Resolution : 1.50 Å(reported)

This is a full wwPDB validation report for a publicly released PDB entry.
We welcome your comments at validation@mail.wwpdb.org
A user guide is available at <http://wwpdb.org/ValidationPDFNotes.html>

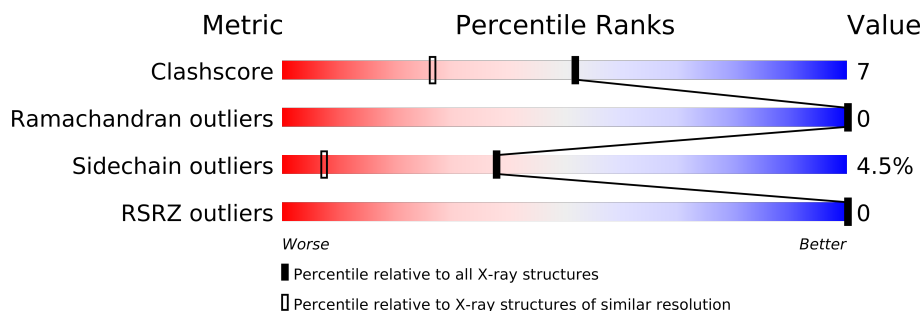
The following versions of software and data (see [references](#)) were used in the production of this report:

MolProbity : 4.02b-467
Mogul : 1.15 2013
Xtriage (Phenix) : dev-1323
EDS : stable22639
Percentile statistics : 21963
Refmac : 5.8.0049
CCP4 : 6.3.0 (Settle)
Ideal geometry (proteins) : Engh & Huber (2001)
Ideal geometry (DNA, RNA) : Parkinson et. al. (1996)
Validation Pipeline (wwPDB-VP) : stable22683

1 Overall quality at a glance


The reported resolution of this entry is 1.50 Å.

Percentile scores (ranging between 0-100) for global validation metrics of the entry are shown in the following graphic. The table shows the number of entries on which the scores are based.



Metric	Whole archive (#Entries)	Similar resolution (#Entries, resolution range(Å))
Clashscore	79885	1768 (1.50-1.50)
Ramachandran outliers	78287	1720 (1.50-1.50)
Sidechain outliers	78261	1718 (1.50-1.50)
RSRZ outliers	66119	1514 (1.50-1.50)

The table below summarises the geometric issues observed across the polymeric chains and their fit to the electron density. The red, orange, yellow and green segments on the lower bar indicate the fraction of residues that contain outliers for ≥ 3 , 2, 1 and 0 types of geometric quality criteria. The upper red bar (where present) indicates the fraction of residues that have poor fit to the electron density.

Mol	Chain	Length	Quality of chain
1	A	112	

2 Entry composition i

There are 3 unique types of molecules in this entry. The entry contains 953 atoms, of which 0 are hydrogen and 0 are deuterium.

In the tables below, the ZeroOcc column contains the number of atoms modelled with zero occupancy, the AltConf column contains the number of residues with at least one atom in alternate conformation and the Trace column contains the number of residues modelled with at most 2 atoms.

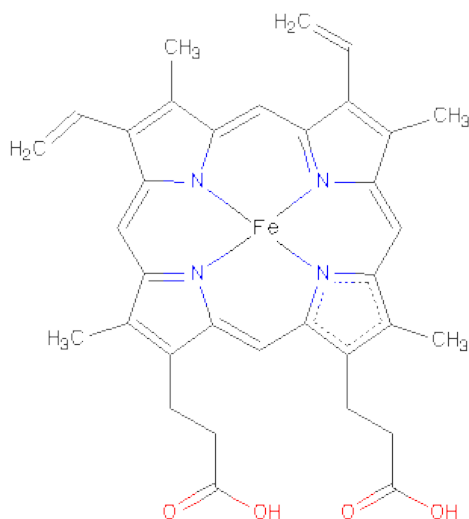
- Molecule 1 is a protein called CYTOCHROME C.

Mol	Chain	Residues	Atoms					ZeroOcc	AltConf	Trace
			Total	C	N	O	S			
1	A	112	864	551	145	164	4	0	0	0

There is a discrepancy between the modelled and reference sequences:

Chain	Residue	Modelled	Actual	Comment	Reference
A	60	ASP	ASN	CONFLICT	UNP P00055

- Molecule 2 is PROTOPORPHYRIN IX CONTAINING FE (three-letter code: HEM) (formula: $C_{34}H_{32}FeN_4O_4$).



Mol	Chain	Residues	Atoms					ZeroOcc	AltConf
			Total	C	Fe	N	O		
2	A	1	43	34	1	4	4	0	0

- Molecule 3 is water.

Mol	Chain	Residues	Atoms		ZeroOcc	AltConf
3	A	46	Total	O	0	0
			46	46		

3 Residue-property plots

These plots are drawn for all protein, RNA and DNA chains in the entry. The first graphic for a chain summarises the proportions of errors displayed in the second graphic. The second graphic shows the sequence view annotated by issues in geometry and electron density. Residues are color-coded according to the number of geometric quality criteria for which they contain at least one outlier: green = 0, yellow = 1, orange = 2 and red = 3 or more. A red dot above a residue indicates a poor fit to the electron density ($\text{RSRZ} > 2$). Stretches of 2 or more consecutive residues without any outlier are shown as a green connector. Residues present in the sample, but not in the model, are shown in grey.

- Molecule 1: CYTOCHROME C

Chain A: 



4 Data and refinement statistics

Property	Value	Source
Space group	P 61	Depositor
Cell constants a, b, c, α , β , γ	43.78Å 43.78Å 110.05Å 90.00° 90.00° 120.00°	Depositor
Resolution (Å)	(Not available) – 1.50 31.22 – 1.50	Depositor EDS
% Data completeness (in resolution range)	(Not available) ((Not available)-1.50) 69.8 (31.22-1.50)	Depositor EDS
R_{merge}	(Not available)	Depositor
R_{sym}	(Not available)	Depositor
$\langle I/\sigma(I) \rangle$	-	Xtriage
Refinement program	unknown	Depositor
R, R_{free}	0.190 , (Not available) 0.183 , (Not available)	Depositor DCC
R_{free} test set	No test flags present.	DCC
Wilson B-factor (Å ²)	7.4	Xtriage
Anisotropy	0.168	Xtriage
Bulk solvent k_{sol} (e/Å ³), B_{sol} (Å ²)	0.37 , 41.7	EDS
Estimated twinning fraction	0.135 for h,-h-k,-l	Xtriage
L-test for twinning	$\langle L \rangle = 0.40$, $\langle L^2 \rangle = 0.22$	Xtriage
Outliers	0 of 13314 reflections	Xtriage
F_o, F_c correlation	0.94	EDS
Total number of atoms	953	wwPDB-VP
Average B, all atoms (Å ²)	10.0	wwPDB-VP

Xtriage's analysis on translational NCS is as follows: *The largest off-origin peak in the Patterson function is 7.10% of the height of the origin peak. No significant pseudotranslation is detected.*

5 Model quality i

5.1 Standard geometry i

Bond lengths and bond angles in the following residue types are not validated in this section: HEM, M3L, ACE

The Z score for a bond length (or angle) is the number of standard deviations the observed value is removed from the expected value. A bond length (or angle) with $|Z| > 5$ is considered an outlier worth inspection. RMSZ is the root-mean-square of all Z scores of the bond lengths (or angles).

Mol	Chain	Bond lengths		Bond angles	
		RMSZ	# Z >5	RMSZ	# Z >5
1	A	1.09	2/860 (0.2%)	1.78	15/1163 (1.3%)

Chiral center outliers are detected by calculating the chiral volume of a chiral center and verifying if the center is modelled as a planar moiety or with the opposite hand. A planarity outlier is detected by checking planarity of atoms in a peptide group, atoms in a mainchain group or atoms of a sidechain that are expected to be planar.

Mol	Chain	#Chirality outliers	#Planarity outliers
1	A	0	1

All (2) bond length outliers are listed below:

Mol	Chain	Res	Type	Atoms	Z	Observed(Å)	Ideal(Å)
1	A	99	ARG	CD-NE	-9.28	1.30	1.46
1	A	46	ARG	NE-CZ	5.42	1.40	1.33

All (15) bond angle outliers are listed below:

Mol	Chain	Res	Type	Atoms	Z	Observed(°)	Ideal(°)
1	A	99	ARG	CD-NE-CZ	23.83	156.97	123.60
1	A	99	ARG	NE-CZ-NH2	-17.34	111.63	120.30
1	A	46	ARG	NE-CZ-NH1	13.88	127.24	120.30
1	A	99	ARG	CG-CD-NE	10.92	134.73	111.80
1	A	46	ARG	NH1-CZ-NH2	-10.12	108.27	119.40
1	A	99	ARG	NE-CZ-NH1	9.79	125.20	120.30
1	A	5	GLU	CA-CB-CG	7.15	129.13	113.40
1	A	12	LYS	CA-CB-CG	7.13	129.08	113.40
1	A	108	GLU	CA-CB-CG	6.23	127.10	113.40
1	A	108	GLU	CB-CG-CD	6.21	130.97	114.20
1	A	46	ARG	NE-CZ-NH2	6.09	123.35	120.30

Continued on next page...

Continued from previous page...

Mol	Chain	Res	Type	Atoms	Z	Observed(°)	Ideal(°)
1	A	68	GLU	CG-CD-OE1	6.05	130.40	118.30
1	A	60	ASP	CB-CG-OD1	5.74	123.46	118.30
1	A	5	GLU	CG-CD-OE1	5.17	128.64	118.30
1	A	108	GLU	OE1-CD-OE2	-5.04	117.25	123.30

There are no chirality outliers.

All (1) planarity outliers are listed below:

Mol	Chain	Res	Type	Group
1	A	46	ARG	Sidechain

5.2 Close contacts ⓘ

In the following table, the Non-H and H(model) columns list the number of non-hydrogen atoms and hydrogen atoms in the chain respectively. The H(added) column lists the number of hydrogens added by MolProbity. The Clashes column lists the number of clashes within the asymmetric unit, and the number in parentheses is this value normalized per 1000 atoms of the molecule in the chain. The Symm-Clashes column gives symmetry related clashes, in the same way as for the Clashes column.

Mol	Chain	Non-H	H(model)	H(added)	Clashes	Symm-Clashes
1	A	864	0	860	13	1
2	A	43	0	30	0	0
3	A	46	0	0	3	2
All	All	953	0	890	13	2

Clashscore is defined as the number of clashes calculated for the entry per 1000 atoms (including hydrogens) of the entry. The overall clashscore for this entry is 7.

All (13) close contacts within the same asymmetric unit are listed below.

Atom-1	Atom-2	Distance(Å)	Clash(Å)
1:A:15:GLU:HG2	1:A:19:LYS:HE2	1.70	0.73
1:A:93:LEU:O	1:A:99:ARG:HD2	1.88	0.73
1:A:95:LYS:HB2	1:A:98:GLU:HG3	1.80	0.64
1:A:46:ARG:NH1	3:A:122:HOH:O	2.31	0.62
1:A:30:LYS:NZ	3:A:147:HOH:O	2.38	0.56
1:A:80:M3L:HM13	1:A:89:VAL:HG22	1.89	0.54
1:A:16:LYS:HE3	3:A:155:HOH:O	2.08	0.53
1:A:93:LEU:HD11	1:A:102:LEU:HD12	1.95	0.47
1:A:16:LYS:O	1:A:20:THR:HG23	2.14	0.47
1:A:90:PHE:HA	1:A:91:PRO:HD3	1.86	0.41

Continued on next page...

Continued from previous page...

Atom-1	Atom-2	Distance(Å)	Clash(Å)
1:A:102:LEU:C	1:A:102:LEU:HD23	2.42	0.41
1:A:78:ASN:CG	1:A:81:LYS:HG3	2.40	0.40
1:A:69:GLU:HG2	1:A:107:LYS:NZ	2.37	0.40

All (2) symmetry-related close contacts are listed below. The label for Atom-2 includes the symmetry operator and encoded unit-cell translations to be applied.

Atom-1	Atom-2	Distance(Å)	Clash(Å)
1:A:63:MET:CE	3:A:118:HOH:O[6_555]	1.23	0.97
3:A:128:HOH:O	3:A:133:HOH:O[6_665]	2.04	0.16

5.3 Torsion angles

5.3.1 Protein backbone ⓘ

In the following table, the Percentiles column shows the percent Ramachandran outliers of the chain as a percentile score with respect to all X-ray entries followed by that with respect to entries of similar resolution. The Analysed column shows the number of residues for which the backbone conformation was analysed, and the total number of residues.

Mol	Chain	Analysed	Favoured	Allowed	Outliers	Percentiles	
1	A	108/112 (96%)	104 (96%)	4 (4%)	0	100	100

There are no Ramachandran outliers to report.

5.3.2 Protein sidechains ⓘ

In the following table, the Percentiles column shows the percent sidechain outliers of the chain as a percentile score with respect to all X-ray entries followed by that with respect to entries of similar resolution. The Analysed column shows the number of residues for which the sidechain conformation was analysed, and the total number of residues.

Mol	Chain	Analysed	Rotameric	Outliers	Percentiles	
1	A	89/89 (100%)	85 (96%)	4 (4%)	38	7

All (4) residues with a non-rotameric sidechain are listed below:

Mol	Chain	Res	Type
1	A	4	SER
1	A	30	LYS

Continued on next page...

Continued from previous page...

Mol	Chain	Res	Type
1	A	108	GLU
1	A	111	SER

Some sidechains can be flipped to improve hydrogen bonding and reduce clashes. All (3) such sidechains are listed below:

Mol	Chain	Res	Type
1	A	36	GLN
1	A	41	ASN
1	A	70	ASN

5.3.3 RNA ⓘ

There are no RNA chains in this entry.

5.4 Non-standard residues in protein, DNA, RNA chains ⓘ

2 non-standard protein/DNA/RNA residues are modelled in this entry.

In the following table, the Counts columns list the number of bonds (or angles) for which Mogul statistics could be retrieved, the number of bonds (or angles) that are observed in the model and the number of bonds (or angles) that are defined in the chemical component dictionary. The Link column lists molecule types, if any, to which the group is linked. The Z score for a bond length (or angle) is the number of standard deviations the observed value is removed from the expected value. A bond length (or angle) with $|Z| > 2$ is considered an outlier worth inspection. RMSZ is the root-mean-square of all Z scores of the bond lengths (or angles).

Mol	Type	Chain	Res	Link	Bond lengths			Bond angles		
					Counts	RMSZ	# Z > 2	Counts	RMSZ	# Z > 2
1	M3L	A	80	1	11,11,12	6.45	1 (9%)	12,14,16	1.20	1 (8%)
1	M3L	A	94	1	11,11,12	6.76	2 (18%)	12,14,16	1.35	2 (16%)

In the following table, the Chirals column lists the number of chiral outliers, the number of chiral centers analysed, the number of these observed in the model and the number defined in the chemical component dictionary. Similar counts are reported in the Torsion and Rings columns. '-' means no outliers of that kind were identified.

Mol	Type	Chain	Res	Link	Chirals	Torsions	Rings
1	M3L	A	80	1	-	0/8/10/12	0/0/0/0
1	M3L	A	94	1	-	0/8/10/12	0/0/0/0

All (3) bond length outliers are listed below:

Mol	Chain	Res	Type	Atoms	Z	Observed(Å)	Ideal(Å)
1	A	94	M3L	O-C	22.03	1.26	1.11
1	A	80	M3L	O-C	21.16	1.26	1.11
1	A	94	M3L	CM1-NZ	3.15	1.59	1.50

All (3) bond angle outliers are listed below:

Mol	Chain	Res	Type	Atoms	Z	Observed(°)	Ideal(°)
1	A	94	M3L	CM2-NZ-CM1	-2.74	101.71	109.00
1	A	94	M3L	CM3-NZ-CE	2.23	118.85	109.90
1	A	80	M3L	C-CA-N	-2.14	111.69	113.83

There are no chirality outliers.

There are no torsion outliers.

There are no ring outliers.

5.5 Carbohydrates ⓘ

There are no carbohydrates in this entry.

5.6 Ligand geometry ⓘ

1 ligand is modelled in this entry.

In the following table, the Counts columns list the number of bonds (or angles) for which Mogul statistics could be retrieved, the number of bonds (or angles) that are observed in the model and the number of bonds (or angles) that are defined in the chemical component dictionary. The Link column lists molecule types, if any, to which the group is linked. The Z score for a bond length (or angle) is the number of standard deviations the observed value is removed from the expected value. A bond length (or angle) with $|Z| > 2$ is considered an outlier worth inspection. RMSZ is the root-mean-square of all Z scores of the bond lengths (or angles).

Mol	Type	Chain	Res	Link	Bond lengths			Bond angles		
					Counts	RMSZ	$\# Z > 2$	Counts	RMSZ	$\# Z > 2$
2	HEM	A	112	1	49,50,50	2.45	12 (24%)	46,82,82	2.02	9 (19%)

In the following table, the Chirals column lists the number of chiral outliers, the number of chiral centers analysed, the number of these observed in the model and the number defined in the chemical component dictionary. Similar counts are reported in the Torsion and Rings columns. '-' means no outliers of that kind were identified.

Mol	Type	Chain	Res	Link	Chirals	Torsions	Rings
2	HEM	A	112	1	-	0/14/114/114	0/0/8/8

All (12) bond length outliers are listed below:

Mol	Chain	Res	Type	Atoms	Z	Observed(Å)	Ideal(Å)
2	A	112	HEM	C2D-C1D	6.59	1.46	1.44
2	A	112	HEM	C3B-C2B	-6.24	1.32	1.43
2	A	112	HEM	C3B-CAB	6.02	1.59	1.40
2	A	112	HEM	C3C-CAC	5.84	1.58	1.40
2	A	112	HEM	C3D-C2D	-5.54	1.34	1.43
2	A	112	HEM	C3C-C2C	-4.96	1.35	1.43
2	A	112	HEM	C4A-C3A	4.24	1.45	1.40
2	A	112	HEM	CBB-CAB	3.21	1.47	1.28
2	A	112	HEM	CMD-C2D	2.48	1.55	1.47
2	A	112	HEM	CMC-C2C	2.42	1.54	1.47
2	A	112	HEM	CHA-C4D	2.12	1.38	1.35
2	A	112	HEM	CMB-C2B	2.12	1.54	1.47

All (9) bond angle outliers are listed below:

Mol	Chain	Res	Type	Atoms	Z	Observed(°)	Ideal(°)
2	A	112	HEM	C3B-C4B-NB	-9.11	107.48	114.00
2	A	112	HEM	CMA-C3A-C4A	-3.49	123.25	128.62
2	A	112	HEM	C4A-CHB-C1B	-3.44	122.95	127.47
2	A	112	HEM	CMA-C3A-C2A	3.12	130.82	124.94
2	A	112	HEM	O1A-CGA-CBA	-2.85	113.23	123.03
2	A	112	HEM	CBD-CAD-C3D	-2.60	108.71	114.37
2	A	112	HEM	C1A-C2A-C3A	2.57	109.58	106.92
2	A	112	HEM	C2D-C1D-ND	-2.46	110.03	112.93
2	A	112	HEM	CBA-CAA-C2A	-2.10	109.00	112.69

There are no chirality outliers.

There are no torsion outliers.

There are no ring outliers.

5.7 Other polymers ⓘ

There are no such residues in this entry.

5.8 Polymer linkage issues

There are no chain breaks in this entry.

6 Fit of model and data ⓘ

6.1 Protein, DNA and RNA chains ⓘ

In the following table, the column labelled ‘#RSRZ> 2’ contains the number (and percentage) of RSRZ outliers, followed by percent RSRZ outliers for the chain as percentile scores relative to all X-ray entries and entries of similar resolution. The OWAB column contains the minimum, median, 95th percentile and maximum values of the occupancy-weighted average B-factor per residue. The column labelled ‘Q< 0.9’ lists the number of (and percentage) of residues with an average occupancy less than 0.9.

Mol	Chain	Analysed	<RSRZ>	#RSRZ>2	OWAB(Å ²)	Q<0.9
1	A	112/112 (100%)	-0.05	0 100 100	6, 10, 16, 19	0

There are no RSRZ outliers to report.

6.2 Non-standard residues in protein, DNA, RNA chains ⓘ

In the following table, the Atoms column lists the number of modelled atoms in the group and the number defined in the chemical component dictionary. LLDF column lists the quality of electron density of the group with respect to its neighbouring residues in protein, DNA or RNA chains. The B-factors column lists the minimum, median, 95th percentile and maximum values of B factors of atoms in the group. The column labelled ‘Q< 0.9’ lists the number of atoms with occupancy less than 0.9.

Mol	Type	Chain	Res	Atoms	RSR	LLDF	B-factors(Å ²)	Q<0.9
1	M3L	A	80	12/13	0.20	2.56	11,17,21,21	0
1	M3L	A	94	12/13	0.15	1.58	10,14,19,19	0

6.3 Carbohydrates ⓘ

There are no carbohydrates in this entry.

6.4 Ligands ⓘ

In the following table, the Atoms column lists the number of modelled atoms in the group and the number defined in the chemical component dictionary. LLDF column lists the quality of electron density of the group with respect to its neighbouring residues in protein, DNA or RNA chains. The B-factors column lists the minimum, median, 95th percentile and maximum values of B factors of atoms in the group. The column labelled ‘Q< 0.9’ lists the number of atoms with occupancy less than 0.9.

Mol	Type	Chain	Res	Atoms	RSR	LLDF	B-factors(\AA^2)	Q<0.9
2	HEM	A	112	43/43	0.08	0.08	5,5,7,8	0

6.5 Other polymers ⓘ

There are no such residues in this entry.