



# Full wwPDB X-ray Structure Validation Report ⓘ

Feb 28, 2014 – 04:11 PM GMT

PDB ID : 3CCO  
Title : Structural adaptation and conservation in quadruplex-drug recognition  
Authors : Parkinson, G.N.; Neidle, S.  
Deposited on : 2008-02-26  
Resolution : 2.20 Å(reported)

This is a full wwPDB validation report for a publicly released PDB entry.  
We welcome your comments at [validation@mail.wwpdb.org](mailto:validation@mail.wwpdb.org)  
A user guide is available at <http://wwpdb.org/ValidationPDFNotes.html>

---

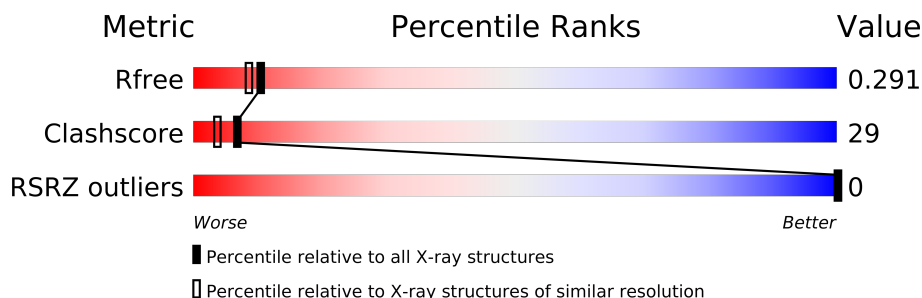
The following versions of software and data (see [references](#)) were used in the production of this report:

MolProbity : 4.02b-467  
Mogul : 1.15 2013  
Xtriage (Phenix) : dev-1323  
EDS : stable22639  
Percentile statistics : 21963  
Refmac : 5.8.0049  
CCP4 : 6.3.0 (Settle)  
Ideal geometry (proteins) : Engh & Huber (2001)  
Ideal geometry (DNA, RNA) : Parkinson et. al. (1996)  
Validation Pipeline (wwPDB-VP) : stable22683

# 1 Overall quality at a glance

The reported resolution of this entry is 2.20 Å.

Percentile scores (ranging between 0-100) for global validation metrics of the entry are shown in the following graphic. The table shows the number of entries on which the scores are based.



Metric	Whole archive (#Entries)	Similar resolution (#Entries, resolution range(Å))
$R_{free}$	66092	2938 (2.20-2.20)
Clashscore	79885	3751 (2.20-2.20)
RSRZ outliers	66119	2939 (2.20-2.20)

The table below summarises the geometric issues observed across the polymeric chains and their fit to the electron density. The red, orange, yellow and green segments on the lower bar indicate the fraction of residues that contain outliers for  $\geq 3$ , 2, 1 and 0 types of geometric quality criteria. The upper red bar (where present) indicates the fraction of residues that have poor fit to the electron density.

Mol	Chain	Length	Quality of chain
1	A	12	

The following table lists non-polymeric compounds that are outliers for geometric or electron-density-fit criteria:

Mol	Type	Chain	Res	Geometry	Electron density
4	NII	A	1	-	X
4	NII	A	2	-	X

## 2 Entry composition

There are 5 unique types of molecules in this entry. The entry contains 377 atoms, of which 0 are hydrogen and 0 are deuterium.

In the tables below, the ZeroOcc column contains the number of atoms modelled with zero occupancy, the AltConf column contains the number of residues with at least one atom in alternate conformation and the Trace column contains the number of residues modelled with at most 2 atoms.

- Molecule 1 is a DNA chain called DNA (5'-D(\*DTP\*DAP\*DGP\*DGP\*DGP\*DTP\*DTP\*DAP\*DGP\*DGP\*DGP\*DT)-3').

Mol	Chain	Residues	Atoms					ZeroOcc	AltConf	Trace
1	A	12	Total	C	N	O	P	0	0	1
			219	100	44	64	11			

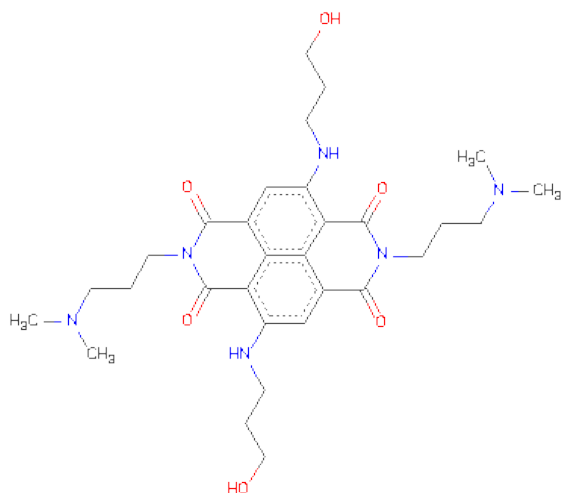
- Molecule 2 is SODIUM ION (three-letter code: NA) (formula: Na).

Mol	Chain	Residues	Atoms		ZeroOcc	AltConf
2	A	1	Total	Na	0	0
			1	1		

- Molecule 3 is POTASSIUM ION (three-letter code: K) (formula: K).

Mol	Chain	Residues	Atoms		ZeroOcc	AltConf
3	A	3	Total	K	0	0
			3	3		

- Molecule 4 is 2,7-BIS[3-(DIMETHYLAMINO)PROPYL]-4,9-BIS[(3-HYDROXYPROPYL)AMINO]BENZO[LMN][3,8]PHENANTHROLINE-1,3,6,8(2H,7H)-TETRONE (three-letter code: NII) (formula: C<sub>30</sub>H<sub>42</sub>N<sub>6</sub>O<sub>6</sub>).



Mol	Chain	Residues	Atoms				ZeroOcc	AltConf
4	A	1	Total	C	N	O	0	0
			42	30	6	6		
4	A	1	Total	C	N	O	0	0
			42	30	6	6		
4	A	1	Total	C	N	O	0	0
			42	30	6	6		

- Molecule 5 is water.

Mol	Chain	Residues	Atoms		ZeroOcc	AltConf
5	A	28	Total	O	0	0
			28	28		

### 3 Residue-property plots

These plots are drawn for all protein, RNA and DNA chains in the entry. The first graphic for a chain summarises the proportions of errors displayed in the second graphic. The second graphic shows the sequence view annotated by issues in geometry and electron density. Residues are color-coded according to the number of geometric quality criteria for which they contain at least one outlier: green = 0, yellow = 1, orange = 2 and red = 3 or more. A red dot above a residue indicates a poor fit to the electron density ( $RSRZ > 2$ ). Stretches of 2 or more consecutive residues without any outlier are shown as a green connector. Residues present in the sample, but not in the model, are shown in grey.

- Molecule 1: DNA (5'-D(\*DTP\*DAP\*DGP\*DGP\*DGP\*DTP\*DTP\*DAP\*DGP\*DGP\*DGP\*D T)-3')

Chain A: 

T1001
A1002
G1003
G1004
G1005
T1006
T1007
A1008
G1009
G1010
G1011
T1012

## 4 Data and refinement statistics

Property	Value	Source
Space group	P 64 2 2	Depositor
Cell constants a, b, c, $\alpha$ , $\beta$ , $\gamma$	61.35Å 61.35Å 43.63Å 90.00° 90.00° 120.00°	Depositor
Resolution (Å)	10.00 – 2.20 22.69 – 1.97	Depositor EDS
% Data completeness (in resolution range)	98.8 (10.00-2.20) 98.8 (22.69-1.97)	Depositor EDS
$R_{merge}$	0.06	Depositor
$R_{sym}$	(Not available)	Depositor
$\langle I/\sigma(I) \rangle$ <sup>1</sup>	14.98 (at 1.98Å)	Xtriage
Refinement program	REFMAC 5.1.24	Depositor
R, $R_{free}$	0.254 , 0.303 0.254 , 0.291	Depositor DCC
$R_{free}$ test set	170 reflections (4.84%)	DCC
Wilson B-factor (Å <sup>2</sup> )	32.7	Xtriage
Anisotropy	0.531	Xtriage
Bulk solvent $k_{sol}$ (e/Å <sup>3</sup> ), $B_{sol}$ (Å <sup>2</sup> )	0.40 , 58.2	EDS
Estimated twinning fraction	No twinning to report.	Xtriage
L-test for twinning	$\langle  L  \rangle = 0.51$ , $\langle L^2 \rangle = 0.34$	Xtriage
Outliers	3 of 3683 reflections (0.081%)	Xtriage
$F_o, F_c$ correlation	0.92	EDS
Total number of atoms	377	wwPDB-VP
Average B, all atoms (Å <sup>2</sup> )	23.0	wwPDB-VP

Xtriage's analysis on translational NCS is as follows: *The largest off-origin peak in the Patterson function is 12.97% of the height of the origin peak. No significant pseudotranslation is detected.*

<sup>1</sup>Intensities estimated from amplitudes.

## 5 Model quality

### 5.1 Standard geometry

Bond lengths and bond angles in the following residue types are not validated in this section: NA, K, NII

The Z score for a bond length (or angle) is the number of standard deviations the observed value is removed from the expected value. A bond length (or angle) with  $|Z| > 5$  is considered an outlier worth inspection. RMSZ is the root-mean-square of all Z scores of the bond lengths (or angles).

Mol	Chain	Bond lengths		Bond angles	
		RMSZ	$\# Z  > 5$	RMSZ	$\# Z  > 5$
1	A	2.37	10/246 (4.1%)	3.64	51/382 (13.4%)

All (10) bond length outliers are listed below:

Mol	Chain	Res	Type	Atoms	Z	Observed(Å)	Ideal(Å)
1	A	1009	DG	C5-C4	-8.55	1.32	1.38
1	A	1005	DG	C6-N1	-8.45	1.33	1.39
1	A	1005	DG	C5-C4	-6.66	1.33	1.38
1	A	1003	DG	C5-C6	-6.30	1.36	1.42
1	A	1011	DG	C6-O6	6.29	1.29	1.24
1	A	1009	DG	C8-N7	-6.29	1.27	1.30
1	A	1004	DG	C5-C4	-6.11	1.34	1.38
1	A	1004	DG	P-O5'	-6.00	1.53	1.59
1	A	1010	DG	N7-C5	-5.53	1.35	1.39
1	A	1007	DT	C2-O2	-5.21	1.18	1.22

All (51) bond angle outliers are listed below:

Mol	Chain	Res	Type	Atoms	Z	Observed(°)	Ideal(°)
1	A	1005	DG	O4'-C1'-N9	16.95	119.86	108.00
1	A	1003	DG	C5-C6-N1	12.44	117.72	111.50
1	A	1005	DG	C5-C6-O6	-12.38	121.17	128.60
1	A	1003	DG	O4'-C1'-N9	12.22	116.56	108.00
1	A	1003	DG	N1-C6-O6	-11.37	113.08	119.90
1	A	1006	DT	O4'-C1'-N1	10.70	115.49	108.00
1	A	1004	DG	C5-C6-N1	10.26	116.63	111.50
1	A	1004	DG	C4-C5-N7	10.05	114.82	110.80
1	A	1004	DG	C5-C6-O6	-10.05	122.57	128.60
1	A	1006	DT	C4-C5-C7	9.31	124.59	119.00
1	A	1010	DG	O4'-C1'-N9	-9.27	101.51	108.00

*Continued on next page...*

*Continued from previous page...*

Mol	Chain	Res	Type	Atoms	Z	Observed(°)	Ideal(°)
1	A	1005	DG	C5-C6-N1	8.85	115.92	111.50
1	A	1003	DG	C4-C5-N7	8.79	114.32	110.80
1	A	1010	DG	N1-C6-O6	-8.56	114.77	119.90
1	A	1002	DA	O4'-C4'-C3'	-8.55	100.87	106.00
1	A	1005	DG	C6-N1-C2	-8.26	120.14	125.10
1	A	1011	DG	O4'-C1'-N9	8.21	113.75	108.00
1	A	1011	DG	C5-C6-O6	8.16	133.50	128.60
1	A	1004	DG	N9-C1'-C2'	7.90	127.60	112.60
1	A	1009	DG	N1-C6-O6	-7.88	115.17	119.90
1	A	1009	DG	C5-C6-N1	7.67	115.33	111.50
1	A	1009	DG	C4-C5-C6	-7.54	114.28	118.80
1	A	1005	DG	N3-C4-N9	7.50	130.50	126.00
1	A	1009	DG	C2-N3-C4	7.17	115.49	111.90
1	A	1005	DG	N3-C4-C5	-7.15	125.02	128.60
1	A	1004	DG	C5-N7-C8	-7.12	100.74	104.30
1	A	1003	DG	O4'-C1'-C2'	-7.01	100.29	105.90
1	A	1010	DG	N9-C4-C5	-6.88	102.65	105.40
1	A	1010	DG	C5-C6-O6	6.88	132.73	128.60
1	A	1011	DG	C5-C6-N1	-6.86	108.07	111.50
1	A	1006	DT	OP1-P-O3'	6.75	120.06	105.20
1	A	1011	DG	O5'-P-OP2	-6.65	99.72	105.70
1	A	1003	DG	C2-N3-C4	6.61	115.21	111.90
1	A	1003	DG	C4-C5-C6	-6.56	114.86	118.80
1	A	1006	DT	C6-C5-C7	-6.28	119.13	122.90
1	A	1004	DG	O4'-C1'-N9	-6.26	103.61	108.00
1	A	1010	DG	O4'-C4'-C3'	-6.16	102.04	104.50
1	A	1003	DG	C5-N7-C8	-6.08	101.26	104.30
1	A	1007	DT	C2-N3-C4	-6.04	123.57	127.20
1	A	1011	DG	C6-N1-C2	5.87	128.62	125.10
1	A	1004	DG	C6-N1-C2	-5.78	121.63	125.10
1	A	1011	DG	N3-C4-N9	-5.76	122.55	126.00
1	A	1004	DG	O4'-C4'-C3'	-5.65	102.24	104.50
1	A	1009	DG	C6-C5-N7	5.54	133.72	130.40
1	A	1002	DA	O4'-C1'-C2'	-5.48	101.52	105.90
1	A	1002	DA	O4'-C1'-N9	-5.42	104.20	108.00
1	A	1011	DG	N7-C8-N9	5.39	115.80	113.10
1	A	1007	DT	C5-C4-O4	-5.30	121.19	124.90
1	A	1008	DA	O4'-C1'-N9	-5.17	104.38	108.00
1	A	1009	DG	N1-C2-N2	5.06	120.75	116.20
1	A	1010	DG	C4-C5-N7	5.02	112.81	110.80

There are no chirality outliers.



There are no planarity outliers.

## 5.2 Close contacts

In the following table, the Non-H and H(model) columns list the number of non-hydrogen atoms and hydrogen atoms in the chain respectively. The H(added) column lists the number of hydrogens added by MolProbity. The Clashes column lists the number of clashes within the asymmetric unit, and the number in parentheses is this value normalized per 1000 atoms of the molecule in the chain. The Symm-Clashes column gives symmetry related clashes, in the same way as for the Clashes column.

Mol	Chain	Non-H	H(model)	H(added)	Clashes	Symm-Clashes
1	A	219	0	112	4	0
2	A	1	0	0	0	0
3	A	3	0	0	0	0
4	A	126	0	126	13	0
5	A	28	0	0	2	0
All	All	377	0	238	17	0

Clashscore is defined as the number of clashes calculated for the entry per 1000 atoms (including hydrogens) of the entry. The overall clashscore for this entry is 29.

All (17) close contacts within the same asymmetric unit are listed below.

Atom-1	Atom-2	Distance(Å)	Clash(Å)
4:A:1:NII:O2	4:A:1:NII:H28A	1.51	1.09
4:A:1:NII:H16	4:A:1:NII:O3	1.53	1.07
4:A:2:NII:O1	4:A:3:NII:H19	1.56	1.05
4:A:1:NII:C19	4:A:1:NII:O1	2.04	1.03
4:A:1:NII:H19	4:A:1:NII:O1	1.61	0.99
4:A:1:NII:O4	4:A:1:NII:H25	1.73	0.87
1:A:1006:DT:OP1	5:A:1026:HOH:O	1.99	0.81
4:A:1:NII:C16	4:A:1:NII:O3	2.31	0.75
4:A:1:NII:O2	4:A:1:NII:C28	2.32	0.74
4:A:1:NII:O1	4:A:1:NII:H19A	1.91	0.70
4:A:2:NII:O1	4:A:3:NII:C19	2.40	0.65
1:A:1012:DT:OP2	5:A:1039:HOH:O	2.20	0.48
4:A:2:NII:H8	4:A:2:NII:H28A	1.60	0.43
4:A:2:NII:H24A	4:A:2:NII:H19A	1.82	0.41
1:A:1002:DA:O5'	1:A:1002:DA:H2'	2.20	0.41
4:A:1:NII:O4	4:A:1:NII:C25	2.57	0.41
1:A:1003:DG:H1'	1:A:1008:DA:N6	2.36	0.41

There are no symmetry-related clashes.

## 5.3 Torsion angles

### 5.3.1 Protein backbone ⓘ

There are no protein chains in this entry.

### 5.3.2 Protein sidechains ⓘ

There are no protein chains in this entry.

### 5.3.3 RNA ⓘ

There are no RNA chains in this entry.

## 5.4 Non-standard residues in protein, DNA, RNA chains ⓘ

There are no non-standard protein/DNA/RNA residues in this entry.

## 5.5 Carbohydrates ⓘ

There are no carbohydrates in this entry.

## 5.6 Ligand geometry ⓘ

Of 7 ligands modelled in this entry, 4 are monoatomic - leaving 3 for Mogul analysis.

In the following table, the Counts columns list the number of bonds (or angles) for which Mogul statistics could be retrieved, the number of bonds (or angles) that are observed in the model and the number of bonds (or angles) that are defined in the chemical component dictionary. The Link column lists molecule types, if any, to which the group is linked. The Z score for a bond length (or angle) is the number of standard deviations the observed value is removed from the expected value. A bond length (or angle) with  $|Z| > 2$  is considered an outlier worth inspection. RMSZ is the root-mean-square of all Z scores of the bond lengths (or angles).

Mol	Type	Chain	Res	Link	Bond lengths			Bond angles		
					Counts	RMSZ	$\# Z  > 2$	Counts	RMSZ	$\# Z  > 2$
4	NII	A	1	-	45,45,45	1.02	3 (6%)	56,64,64	3.46	24 (42%)
4	NII	A	2	-	45,45,45	0.93	2 (4%)	56,64,64	1.55	10 (17%)
4	NII	A	3	-	45,45,45	0.89	4 (8%)	56,64,64	1.61	11 (19%)

In the following table, the Chirals column lists the number of chiral outliers, the number of chiral centers analysed, the number of these observed in the model and the number defined in the chemical

component dictionary. Similar counts are reported in the Torsion and Rings columns. '-' means no outliers of that kind were identified.

Mol	Type	Chain	Res	Link	Chirals	Torsions	Rings
4	NII	A	1	-	-	8/22/22/22	0/0/4/4
4	NII	A	2	-	-	0/22/22/22	0/0/4/4
4	NII	A	3	-	-	0/22/22/22	0/0/4/4

All (9) bond length outliers are listed below:

Mol	Chain	Res	Type	Atoms	Z	Observed(Å)	Ideal(Å)
4	A	1	NII	C7-C4	-3.15	1.38	1.42
4	A	1	NII	C6-C5	-2.81	1.38	1.42
4	A	2	NII	C7-C4	-2.77	1.38	1.42
4	A	1	NII	C8-C7	-2.71	1.36	1.42
4	A	2	NII	C6-C5	-2.56	1.39	1.42
4	A	3	NII	C7-C4	-2.42	1.39	1.42
4	A	3	NII	C2-C3	-2.29	1.39	1.42
4	A	3	NII	C6-C5	-2.11	1.39	1.42
4	A	3	NII	C4-C3	-2.05	1.38	1.42

All (45) bond angle outliers are listed below:

Mol	Chain	Res	Type	Atoms	Z	Observed(°)	Ideal(°)
4	A	1	NII	C10-C9-N3	12.96	134.08	120.05
4	A	1	NII	C3-C2-N6	9.97	130.84	120.05
4	A	1	NII	C8-C9-N3	-7.55	106.75	122.10
4	A	1	NII	C7-C4-C5	-7.11	117.18	120.03
4	A	1	NII	C29-C28-N3	-6.92	91.98	111.26
4	A	1	NII	C1-C2-N6	-6.75	108.37	122.10
4	A	1	NII	C28-N3-C9	4.98	131.99	123.05
4	A	1	NII	C26-C25-N6	-4.98	97.39	111.26
4	A	1	NII	C25-N6-C2	4.97	131.97	123.05
4	A	3	NII	C19-C18-N2	4.89	116.28	112.31
4	A	2	NII	C28-N3-C9	-4.73	114.56	123.05
4	A	2	NII	C10-C9-N3	4.39	124.80	120.05
4	A	3	NII	C13-N2-C14	4.15	122.19	120.31
4	A	1	NII	C8-C7-C14	-3.94	114.42	121.95
4	A	3	NII	C10-C11-N1	3.73	122.24	118.96
4	A	3	NII	C6-C5-C10	-3.73	118.54	120.03
4	A	1	NII	C13-C3-C4	-3.66	115.61	120.85
4	A	2	NII	C8-C9-N3	-3.62	114.73	122.10
4	A	1	NII	C10-C11-N1	3.35	121.91	118.96
4	A	2	NII	C3-C13-N2	2.98	121.59	118.96

*Continued on next page...*

*Continued from previous page...*

Mol	Chain	Res	Type	Atoms	Z	Observed(°)	Ideal(°)
4	A	1	NII	C28-C29-C30	2.91	118.07	113.06
4	A	3	NII	C13-C3-C4	-2.73	116.95	120.85
4	A	1	NII	C3-C13-N2	2.71	121.35	118.96
4	A	1	NII	C13-C3-C2	2.67	128.22	122.04
4	A	3	NII	C10-C9-N3	2.63	122.89	120.05
4	A	1	NII	C18-N2-C14	-2.62	114.91	119.36
4	A	1	NII	C18-N2-C13	2.57	123.72	119.36
4	A	1	NII	C11-C10-C5	-2.56	117.18	120.85
4	A	2	NII	C26-C25-N6	-2.56	104.14	111.26
4	A	3	NII	C7-C4-C3	2.54	121.06	120.03
4	A	3	NII	C3-C13-N2	2.53	121.19	118.96
4	A	2	NII	C10-C11-N1	2.48	121.14	118.96
4	A	1	NII	C5-C4-C3	2.46	122.78	119.96
4	A	2	NII	C28-C29-C30	-2.42	108.89	113.06
4	A	3	NII	C8-C9-N3	-2.41	117.19	122.10
4	A	2	NII	C19-C18-N2	-2.37	110.39	112.31
4	A	2	NII	C13-C3-C4	-2.35	117.49	120.85
4	A	1	NII	C13-N2-C14	2.34	121.37	120.31
4	A	3	NII	C26-C25-N6	-2.30	104.85	111.26
4	A	2	NII	C11-C10-C5	-2.27	117.61	120.85
4	A	3	NII	C28-N3-C9	-2.22	119.07	123.05
4	A	1	NII	C16-C17-N4	-2.20	107.83	113.59
4	A	1	NII	C16-C15-N1	2.14	114.05	112.31
4	A	1	NII	C6-C5-C10	2.09	120.88	120.03
4	A	1	NII	C8-C7-C4	2.01	124.28	118.97

There are no chirality outliers.

All (8) torsion outliers are listed below:

Mol	Chain	Res	Type	Atoms
4	A	1	NII	C1-C2-N6-C25
4	A	1	NII	C3-C2-N6-C25
4	A	1	NII	C8-C9-N3-C28
4	A	1	NII	C10-C9-N3-C28
4	A	1	NII	C19-C18-N2-C13
4	A	1	NII	C19-C18-N2-C14
4	A	1	NII	C16-C15-N1-C11
4	A	1	NII	C16-C15-N1-C12

There are no ring outliers.

## 5.7 Other polymers ⓘ

There are no such residues in this entry.

## 5.8 Polymer linkage issues

There are no chain breaks in this entry.

## 6 Fit of model and data ⓘ

### 6.1 Protein, DNA and RNA chains ⓘ

In the following table, the column labelled ‘#RSRZ> 2’ contains the number (and percentage) of RSRZ outliers, followed by percent RSRZ outliers for the chain as percentile scores relative to all X-ray entries and entries of similar resolution. The OWAB column contains the minimum, median, 95<sup>th</sup> percentile and maximum values of the occupancy-weighted average B-factor per residue. The column labelled ‘Q< 0.9’ lists the number of (and percentage) of residues with an average occupancy less than 0.9.

Mol	Chain	Analysed	<RSRZ>	#RSRZ>2	OWAB(Å <sup>2</sup> )	Q<0.9
1	A	12/12 (100%)	-0.37	0 100 100	10, 16, 26, 36	1 (8%)

There are no RSRZ outliers to report.

### 6.2 Non-standard residues in protein, DNA, RNA chains ⓘ

There are no non-standard protein/DNA/RNA residues in this entry.

### 6.3 Carbohydrates ⓘ

There are no carbohydrates in this entry.

### 6.4 Ligands ⓘ

In the following table, the Atoms column lists the number of modelled atoms in the group and the number defined in the chemical component dictionary. LLDF column lists the quality of electron density of the group with respect to its neighbouring residues in protein, DNA or RNA chains. The B-factors column lists the minimum, median, 95<sup>th</sup> percentile and maximum values of B factors of atoms in the group. The column labelled ‘Q< 0.9’ lists the number of atoms with occupancy less than 0.9.

Mol	Type	Chain	Res	Atoms	RSR	LLDF	B-factors(Å <sup>2</sup> )	Q<0.9
4	NII	A	1	42/42	0.21	13.61	21,24,32,35	42
4	NII	A	2	42/42	0.21	11.07	37,38,41,42	42
3	K	A	31	1/1	0.13	1.26	15,15,15,15	1
3	K	A	30	1/1	0.12	0.11	12,12,12,12	1
3	K	A	32	1/1	0.10	-4.33	14,14,14,14	1
2	NA	A	4	1/1	0.04	-13.41	14,14,14,14	0
4	NII	A	3	42/42	0.17	-	30,31,38,41	42

## 6.5 Other polymers ⓘ

There are no such residues in this entry.