



Full wwPDB X-ray Structure Validation Report i

Feb 27, 2014 – 03:21 PM GMT

PDB ID : 2CDU
Title : THE CRYSTAL STRUCTURE OF WATER-FORMING NAD(P)H OXIDASE FROM LACTOBACILLUS SANFRANCISCENSIS
Authors : Lountos, G.T.; Jiang, R.; Wellborn, W.B.; Thaler, T.L.; Bommarius, A.S.; Orville, A.M.
Deposited on : 2006-01-28
Resolution : 1.80 Å(reported)

This is a full wwPDB validation report for a publicly released PDB entry.
We welcome your comments at validation@mail.wwpdb.org
A user guide is available at <http://wwpdb.org/ValidationPDFNotes.html>

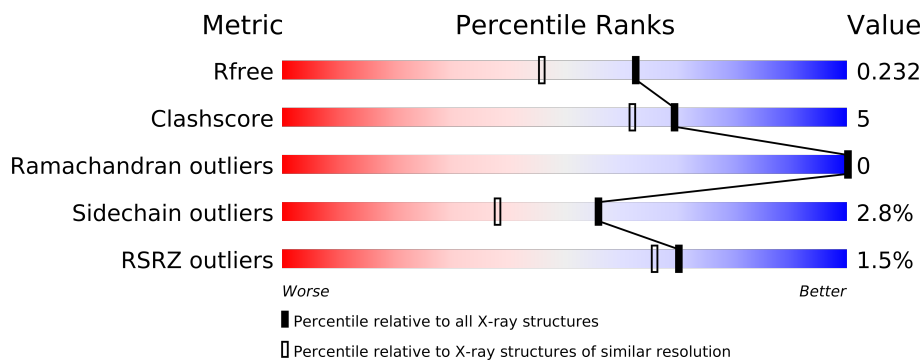
The following versions of software and data (see [references](#)) were used in the production of this report:

MolProbity	:	4.02b-467
Mogul	:	1.15 2013
Xtriage (Phenix)	:	dev-1323
EDS	:	stable22639
Percentile statistics	:	21963
Refmac	:	5.8.0049
CCP4	:	6.3.0 (Settle)
Ideal geometry (proteins)	:	Engh & Huber (2001)
Ideal geometry (DNA, RNA)	:	Parkinson et. al. (1996)
Validation Pipeline (wwPDB-VP)	:	stable22683

1 Overall quality at a glance

The reported resolution of this entry is 1.80 Å.

Percentile scores (ranging between 0-100) for global validation metrics of the entry are shown in the following graphic. The table shows the number of entries on which the scores are based.



Metric	Whole archive (#Entries)	Similar resolution (#Entries, resolution range(Å))
R_{free}	66092	3513 (1.80-1.80)
Clashscore	79885	4461 (1.80-1.80)
Ramachandran outliers	78287	4404 (1.80-1.80)
Sidechain outliers	78261	4403 (1.80-1.80)
RSRZ outliers	66119	3515 (1.80-1.80)

The table below summarises the geometric issues observed across the polymeric chains and their fit to the electron density. The red, orange, yellow and green segments on the lower bar indicate the fraction of residues that contain outliers for ≥ 3 , 2, 1 and 0 types of geometric quality criteria. The upper red bar (where present) indicates the fraction of residues that have poor fit to the electron density.

Mol	Chain	Length	Quality of chain
1	A	452	
1	B	452	

The following table lists non-polymeric compounds that are outliers for geometric or electron-density-fit criteria:

Mol	Type	Chain	Res	Geometry	Electron density
2	FAD	A	500[*]	-	X
2	FAD	B	500[*]	-	X
3	ADP	B	501	-	X

2 Entry composition i

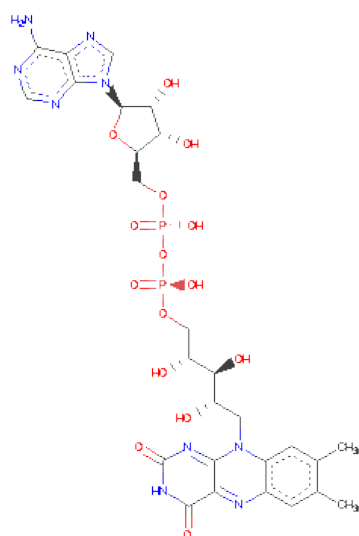
There are 4 unique types of molecules in this entry. The entry contains 7846 atoms, of which 0 are hydrogen and 0 are deuterium.

In the tables below, the ZeroOcc column contains the number of atoms modelled with zero occupancy, the AltConf column contains the number of residues with at least one atom in alternate conformation and the Trace column contains the number of residues modelled with at most 2 atoms.

- Molecule 1 is a protein called NADPH OXIDASE.

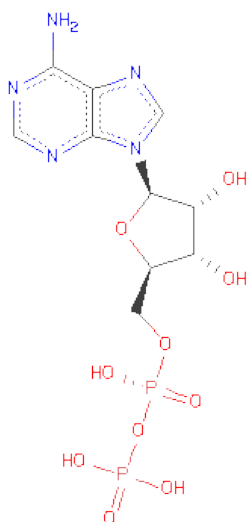
Mol	Chain	Residues	Atoms					ZeroOcc	AltConf	Trace
1	A	451	Total	C	N	O	S	0	4	0
			3493	2197	587	692	17			
1	B	449	Total	C	N	O	S	0	8	0
			3485	2191	585	691	18			

- Molecule 2 is FLAVIN-ADENINE DINUCLEOTIDE (three-letter code: FAD) (formula: $C_{27}H_{33}N_9O_{15}P_2$).



Mol	Chain	Residues	Atoms					ZeroOcc	AltConf
2	A	1	Total	C	N	O	P	0	1
			53	27	9	15	2		
2	B	1	Total	C	N	O	P	0	1
			53	27	9	15	2		

- Molecule 3 is ADENOSINE-5'-DIPHOSPHATE (three-letter code: ADP) (formula: $C_{10}H_{15}N_5O_{10}P_2$).



Mol	Chain	Residues	Atoms					ZeroOcc	AltConf
3	A	1	Total	C	N	O	P	0	0
			27	10	5	10	2		
3	B	1	Total	C	N	O	P	0	0
			27	10	5	10	2		

- Molecule 4 is water.

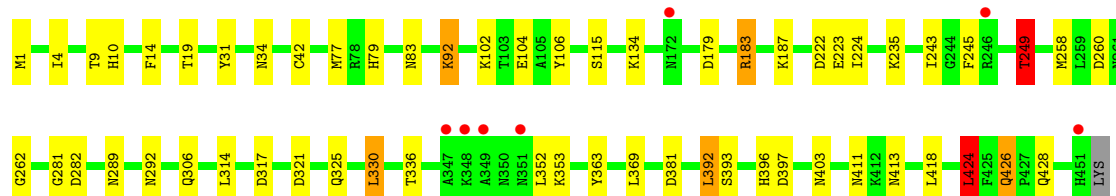
Mol	Chain	Residues	Atoms		ZeroOcc	AltConf
4	A	382	Total	O	0	0
			382	382		
4	B	326	Total	O	0	0
			326	326		

3 Residue-property plots

These plots are drawn for all protein, RNA and DNA chains in the entry. The first graphic for a chain summarises the proportions of errors displayed in the second graphic. The second graphic shows the sequence view annotated by issues in geometry and electron density. Residues are color-coded according to the number of geometric quality criteria for which they contain at least one outlier: green = 0, yellow = 1, orange = 2 and red = 3 or more. A red dot above a residue indicates a poor fit to the electron density ($RSRZ > 2$). Stretches of 2 or more consecutive residues without any outlier are shown as a green connector. Residues present in the sample, but not in the model, are shown in grey.

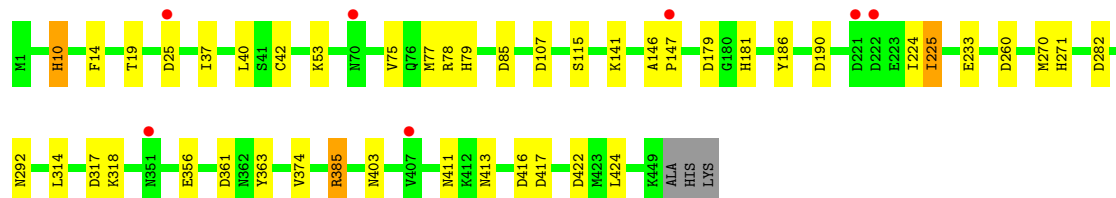
• Molecule 1: NADPH OXIDASE

Chain A: 



• Molecule 1: NADPH OXIDASE

Chain B: 



4 Data and refinement statistics

Property	Value	Source
Space group	P 21 21 21	Depositor
Cell constants a, b, c, α , β , γ	59.64Å 92.64Å 163.47Å 90.00° 90.00° 90.00°	Depositor
Resolution (Å)	81.65 – 1.80 40.30 – 1.80	Depositor EDS
% Data completeness (in resolution range)	96.1 (81.65-1.80) 96.1 (40.30-1.80)	Depositor EDS
R_{merge}	0.10	Depositor
R_{sym}	(Not available)	Depositor
$\langle I/\sigma(I) \rangle$ ¹	1.56 (at 1.79Å)	Xtriage
Refinement program	REFMAC 5.1.24	Depositor
R, R_{free}	0.178 , 0.223 0.190 , 0.232	Depositor DCC
R_{free} test set	4054 reflections (5.24%)	DCC
Wilson B-factor (Å ²)	23.8	Xtriage
Anisotropy	0.613	Xtriage
Bulk solvent k_{sol} (e/Å ³), B_{sol} (Å ²)	0.34 , 35.1	EDS
Estimated twinning fraction	No twinning to report.	Xtriage
L-test for twinning	$\langle L \rangle = 0.50$, $\langle L^2 \rangle = 0.33$	Xtriage
Outliers	1 of 81424 reflections (0.001%)	Xtriage
F_o, F_c correlation	0.96	EDS
Total number of atoms	7846	wwPDB-VP
Average B, all atoms (Å ²)	28.0	wwPDB-VP

Xtriage's analysis on translational NCS is as follows: *The largest off-origin peak in the Patterson function is 5.65% of the height of the origin peak. No significant pseudotranslation is detected.*

¹Intensities estimated from amplitudes.

5 Model quality

5.1 Standard geometry

Bond lengths and bond angles in the following residue types are not validated in this section: CSX, ADP, FAD

The Z score for a bond length (or angle) is the number of standard deviations the observed value is removed from the expected value. A bond length (or angle) with $|Z| > 5$ is considered an outlier worth inspection. RMSZ is the root-mean-square of all Z scores of the bond lengths (or angles).

Mol	Chain	Bond lengths		Bond angles	
		RMSZ	# $ Z > 5$	RMSZ	# $ Z > 5$
1	A	0.66	0/3555	0.89	14/4818 (0.3%)
1	B	0.64	0/3572	0.84	10/4840 (0.2%)
All	All	0.65	0/7127	0.86	24/9658 (0.2%)

There are no bond length outliers.

All (24) bond angle outliers are listed below:

Mol	Chain	Res	Type	Atoms	Z	Observed(°)	Ideal(°)
1	A	183	ARG	NE-CZ-NH2	-9.39	115.60	120.30
1	A	183	ARG	NE-CZ-NH1	9.32	124.96	120.30
1	B	385	ARG	NE-CZ-NH2	-9.31	115.65	120.30
1	A	392	LEU	CA-CB-CG	8.66	135.21	115.30
1	A	330	LEU	CA-CB-CG	8.40	134.61	115.30
1	A	282	ASP	CB-CG-OD2	8.03	125.53	118.30
1	B	416	ASP	CB-CG-OD2	6.91	124.52	118.30
1	A	381	ASP	CB-CG-OD2	6.76	124.38	118.30
1	B	385	ARG	NE-CZ-NH1	6.65	123.62	120.30
1	B	179	ASP	CB-CG-OD2	5.94	123.65	118.30
1	B	417	ASP	CB-CG-OD2	5.77	123.49	118.30
1	A	260	ASP	CB-CG-OD2	5.73	123.46	118.30
1	A	424	LEU	CA-CB-CG	5.61	128.19	115.30
1	A	249	THR	N-CA-CB	-5.59	99.67	110.30
1	A	317	ASP	CB-CG-OD2	5.44	123.19	118.30
1	A	222	ASP	CB-CG-OD2	5.42	123.17	118.30
1	B	260	ASP	CB-CG-OD2	5.39	123.15	118.30
1	B	85	ASP	CB-CG-OD2	5.35	123.11	118.30
1	A	392	LEU	CB-CG-CD2	5.23	119.89	111.00
1	A	179	ASP	CB-CG-OD2	5.22	123.00	118.30
1	B	361	ASP	CB-CG-OD2	5.09	122.88	118.30
1	B	107	ASP	CB-CG-OD2	5.09	122.88	118.30

Continued on next page...

Continued from previous page...

Mol	Chain	Res	Type	Atoms	Z	Observed(°)	Ideal(°)
1	B	78	ARG	NE-CZ-NH1	5.04	122.82	120.30
1	A	321	ASP	CB-CG-OD1	5.03	122.82	118.30

There are no chirality outliers.

There are no planarity outliers.

5.2 Close contacts ⓘ

In the following table, the Non-H and H(model) columns list the number of non-hydrogen atoms and hydrogen atoms in the chain respectively. The H(added) column lists the number of hydrogens added by MolProbity. The Clashes column lists the number of clashes within the asymmetric unit, and the number in parentheses is this value normalized per 1000 atoms of the molecule in the chain. The Symm-Clashes column gives symmetry related clashes, in the same way as for the Clashes column.

Mol	Chain	Non-H	H(model)	H(added)	Clashes	Symm-Clashes
1	A	3493	0	3464	43	0
1	B	3485	0	3458	30	0
2	A	53	0	8	0	0
2	B	53	0	8	0	0
3	A	27	0	12	1	0
3	B	27	0	12	0	0
4	A	382	0	0	12	1
4	B	326	0	0	6	1
All	All	7846	0	6962	67	1

Clashscore is defined as the number of clashes calculated for the entry per 1000 atoms (including hydrogens) of the entry. The overall clashscore for this entry is 5.

All (67) close contacts within the same asymmetric unit are listed below.

Atom-1	Atom-2	Distance(Å)	Clash(Å)
1:A:289:ASN:HD22	1:A:325:GLN:HE22	1.09	0.99
1:A:249:THR:HG21	1:A:262:GLY:O	1.68	0.93
1:A:411:ASN:HD21	1:B:413:ASN:HD21	1.20	0.85
1:A:363:TYR:CZ	1:A:396[B]:HIS:HD2	1.96	0.84
1:A:289:ASN:HD22	1:A:325:GLN:NE2	1.80	0.80
1:A:413:ASN:HD21	1:B:411:ASN:HD21	1.29	0.78
1:B:25:ASP:OD1	4:B:2014:HOH:O	2.02	0.77
1:B:318:LYS:NZ	4:B:2224:HOH:O	2.21	0.74
1:A:363:TYR:CE1	1:A:396[B]:HIS:HD2	2.06	0.73
1:A:223:GLU:OE2	1:A:235:LYS:NZ	2.21	0.73

Continued on next page...

Continued from previous page...

Atom-1	Atom-2	Distance(Å)	Clash(Å)
1:B:37:ILE:HG23	1:B:77[A]:MET:HE2	1.70	0.72
1:B:270:MET:SD	4:B:2194:HOH:O	2.48	0.72
1:B:10[A]:HIS:ND1	4:B:2006:HOH:O	2.23	0.71
1:A:10[A]:HIS:ND1	4:A:2006:HOH:O	2.24	0.69
1:A:403:ASN:HD21	1:B:424:LEU:H	1.38	0.68
1:A:10[A]:HIS:CE1	4:A:2006:HOH:O	2.46	0.67
1:A:428[B]:GLN:OE1	4:A:2352:HOH:O	2.14	0.66
1:A:281:GLY:H	1:A:306:GLN:HE21	1.43	0.65
1:A:34:ASN:ND2	4:A:2024:HOH:O	2.30	0.64
1:A:187:LYS:NZ	4:A:2173:HOH:O	2.29	0.64
1:B:225:ILE:HD12	1:B:233:GLU:HB3	1.81	0.61
1:A:31:TYR:OH	1:A:104:GLU:OE2	2.09	0.60
1:A:363:TYR:CE1	1:A:396[B]:HIS:CD2	2.88	0.59
1:A:396[B]:HIS:ND1	1:A:397:ASP:N	2.50	0.59
1:B:53:LYS:NZ	4:B:2037:HOH:O	2.37	0.57
1:A:424:LEU:H	1:B:403:ASN:HD21	1.53	0.56
1:A:34:ASN:CG	4:A:2026:HOH:O	2.44	0.56
1:A:183:ARG:HD3	4:A:2168:HOH:O	2.06	0.55
1:A:281:GLY:H	1:A:306:GLN:NE2	2.05	0.54
1:A:249:THR:HG23	1:A:258:MET:CE	2.38	0.53
1:B:40:LEU:HD22	1:B:42[A]:CSX:OD	2.08	0.53
1:A:363:TYR:CZ	1:A:396[B]:HIS:CD2	2.87	0.53
1:A:83:ASN:HB3	1:A:92:LYS:HB2	1.90	0.53
1:B:37:ILE:HG23	1:B:77[A]:MET:CE	2.39	0.52
1:A:79:HIS:HE1	4:A:2093:HOH:O	1.92	0.51
1:B:146:ALA:HB3	1:B:147:PRO:HD3	1.92	0.51
1:B:19:THR:HG23	1:B:314:LEU:HD22	1.95	0.49
1:B:271:HIS:HE1	1:B:317:ASP:OD1	1.96	0.48
1:A:134:LYS:HG3	1:A:245:PHE:CE2	2.48	0.48
1:A:249:THR:HG22	4:A:2227:HOH:O	2.13	0.47
1:A:77:MET:O	1:A:79:HIS:HD2	1.98	0.47
1:B:75:VAL:CG1	1:B:77[B]:MET:HE3	2.45	0.46
1:A:243:ILE:HA	3:A:501:ADP:H5'2	1.98	0.45
1:B:190:ASP:OD2	1:B:356:GLU:OE2	2.35	0.45
1:A:9:THR:HG22	4:A:2034:HOH:O	2.16	0.45
1:A:10[B]:HIS:CE1	4:A:2373:HOH:O	2.70	0.45
1:A:4:ILE:HD12	1:A:106:TYR:HB3	1.99	0.45
1:A:411:ASN:ND2	1:B:413:ASN:HD21	2.00	0.44
1:B:225:ILE:CD1	1:B:233:GLU:HB3	2.48	0.44
1:A:249:THR:HG23	1:A:258:MET:HE1	1.99	0.43
1:A:115:SER:HB2	1:A:245:PHE:HB3	1.99	0.43
1:B:10[A]:HIS:CD2	4:B:2005:HOH:O	2.72	0.43

Continued on next page...

Continued from previous page...

Atom-1	Atom-2	Distance(Å)	Clash(Å)
1:B:115:SER:HB3	1:B:282:ASP:HB3	2.00	0.43
1:A:336:THR:O	1:A:393:SER:HA	2.19	0.42
1:B:363:TYR:HB3	1:B:374[B]:VAL:CG2	2.49	0.42
1:B:75:VAL:CG1	1:B:77[B]:MET:CE	2.98	0.41
1:A:325:GLN:HB2	1:B:422:ASP:OD2	2.20	0.41
1:A:19:THR:HG23	1:A:314:LEU:HD22	2.02	0.41
1:B:19:THR:HG23	1:B:314:LEU:CD2	2.51	0.41
1:A:292:ASN:HB2	4:A:2256:HOH:O	2.22	0.40
1:B:181:HIS:CD2	1:B:186:TYR:CD2	3.10	0.40
1:A:289:ASN:HB2	1:A:325:GLN:HE21	1.86	0.40

All (1) symmetry-related close contacts are listed below. The label for Atom-2 includes the symmetry operator and encoded unit-cell translations to be applied.

Atom-1	Atom-2	Distance(Å)	Clash(Å)
4:A:2121:HOH:O	4:B:2074:HOH:O[2_554]	2.11	0.09

5.3 Torsion angles

5.3.1 Protein backbone ⓘ

In the following table, the Percentiles column shows the percent Ramachandran outliers of the chain as a percentile score with respect to all X-ray entries followed by that with respect to entries of similar resolution. The Analysed column shows the number of residues for which the backbone conformation was analysed, and the total number of residues.

Mol	Chain	Analysed	Favoured	Allowed	Outliers	Percentiles	
1	A	451/452 (100%)	437 (97%)	14 (3%)	0	100	100
1	B	453/452 (100%)	441 (97%)	12 (3%)	0	100	100
All	All	904/904 (100%)	878 (97%)	26 (3%)	0	100	100

There are no Ramachandran outliers to report.

5.3.2 Protein sidechains ⓘ

In the following table, the Percentiles column shows the percent sidechain outliers of the chain as a percentile score with respect to all X-ray entries followed by that with respect to entries of similar resolution. The Analysed column shows the number of residues for which the sidechain conformation was analysed, and the total number of residues.

Mol	Chain	Analysed	Rotameric	Outliers	Percentiles	
1	A	384/383 (100%)	370 (96%)	14 (4%)	47	27
1	B	387/383 (101%)	379 (98%)	8 (2%)	66	51
All	All	771/766 (101%)	749 (97%)	22 (3%)	56	37

All (22) residues with a non-rotameric sidechain are listed below:

Mol	Chain	Res	Type
1	A	1	MET
1	A	14	PHE
1	A	92	LYS
1	A	102	LYS
1	A	224	ILE
1	A	249	THR
1	A	330	LEU
1	A	352	LEU
1	A	353	LYS
1	A	369	LEU
1	A	392	LEU
1	A	418	LEU
1	A	424	LEU
1	A	426	GLN
1	B	10[A]	HIS
1	B	10[B]	HIS
1	B	14	PHE
1	B	141	LYS
1	B	224	ILE
1	B	225	ILE
1	B	292	ASN
1	B	385	ARG

Some sidechains can be flipped to improve hydrogen bonding and reduce clashes. All (16) such sidechains are listed below:

Mol	Chain	Res	Type
1	A	34	ASN
1	A	79	HIS
1	A	271	HIS
1	A	306	GLN
1	A	325	GLN
1	A	403	ASN
1	A	411	ASN
1	A	426	GLN

Continued on next page...

Continued from previous page...

Mol	Chain	Res	Type
1	A	451	HIS
1	B	79	HIS
1	B	271	HIS
1	B	292	ASN
1	B	403	ASN
1	B	411	ASN
1	B	428	GLN
1	B	446	GLN

5.3.3 RNA ⓘ

There are no RNA chains in this entry.

5.4 Non-standard residues in protein, DNA, RNA chains ⓘ

Of 4 non-standard protein/DNA/RNA residues modelled in this entry, 4 are modelled with single atom - leaving 0 for Mogul analysis.

There are no bond length outliers.

There are no bond angle outliers.

There are no chirality outliers.

There are no torsion outliers.

There are no ring outliers.

5.5 Carbohydrates ⓘ

There are no carbohydrates in this entry.

5.6 Ligand geometry ⓘ

4 ligands are modelled in this entry.

In the following table, the Counts columns list the number of bonds (or angles) for which Mogul statistics could be retrieved, the number of bonds (or angles) that are observed in the model and the number of bonds (or angles) that are defined in the chemical component dictionary. The Link column lists molecule types, if any, to which the group is linked. The Z score for a bond length (or angle) is the number of standard deviations the observed value is removed from the expected value. A bond length (or angle) with $|Z| > 2$ is considered an outlier worth inspection. RMSZ is the root-mean-square of all Z scores of the bond lengths (or angles).

Mol	Type	Chain	Res	Link	Bond lengths			Bond angles		
					Counts	RMSZ	# Z > 2	Counts	RMSZ	# Z > 2
2	FAD	A	500[*]	-	7,9,58	0.80	0	8,12,89	2.56	3 (37%)
3	ADP	A	501	-	29,29,29	1.16	3 (10%)	45,45,45	1.97	7 (15%)
2	FAD	B	500[*]	-	7,9,58	0.70	0	8,12,89	1.64	2 (25%)
3	ADP	B	501	-	29,29,29	1.16	4 (13%)	45,45,45	1.98	5 (11%)

In the following table, the Chirals column lists the number of chiral outliers, the number of chiral centers analysed, the number of these observed in the model and the number defined in the chemical component dictionary. Similar counts are reported in the Torsion and Rings columns. '-' means no outliers of that kind were identified.

Mol	Type	Chain	Res	Link	Chirals	Torsions	Rings
2	FAD	A	500[*]	-	-	0/2/15/50	0/1/1/6
3	ADP	A	501	-	-	0/16/32/32	0/1/3/3
2	FAD	B	500[*]	-	-	0/2/15/50	0/1/1/6
3	ADP	B	501	-	-	0/16/32/32	0/1/3/3

All (7) bond length outliers are listed below:

Mol	Chain	Res	Type	Atoms	Z	Observed(Å)	Ideal(Å)
3	B	501	ADP	C2-N3	3.01	1.38	1.32
3	A	501	ADP	C2-N3	2.91	1.37	1.32
3	A	501	ADP	PB-O3B	2.53	1.64	1.54
3	B	501	ADP	PB-O3B	2.43	1.63	1.54
3	B	501	ADP	C2-N1	2.23	1.38	1.33
3	B	501	ADP	PA-O3A	2.03	1.63	1.59
3	A	501	ADP	PA-O3A	2.03	1.63	1.59

All (17) bond angle outliers are listed below:

Mol	Chain	Res	Type	Atoms	Z	Observed(°)	Ideal(°)
3	B	501	ADP	N3-C2-N1	-10.64	119.81	128.71
3	A	501	ADP	N3-C2-N1	-9.79	120.53	128.71
2	A	500[*]	FAD	O5B-C5B-C4B	-6.09	104.75	113.28
3	A	501	ADP	O4'-C1'-N9	3.48	111.68	108.44
3	A	501	ADP	N3-C4-N9	3.34	131.47	125.43
2	B	500[*]	FAD	O5B-C5B-C4B	-2.90	109.21	113.28
3	B	501	ADP	C1'-N9-C4	-2.88	121.66	126.64
3	B	501	ADP	N3-C4-N9	2.78	130.45	125.43
2	A	500[*]	FAD	O4B-C4B-C3B	2.76	107.76	103.75
3	A	501	ADP	C1'-N9-C4	-2.70	121.98	126.64
2	A	500[*]	FAD	O4B-C4B-C5B	-2.65	105.66	109.16

Continued on next page...

Continued from previous page...

Mol	Chain	Res	Type	Atoms	Z	Observed(°)	Ideal(°)
2	B	500[*]	FAD	O4B-C4B-C3B	2.56	107.47	103.75
3	A	501	ADP	PA-O3A-PB	-2.47	124.44	131.68
3	B	501	ADP	PA-O3A-PB	-2.28	124.99	131.68
3	B	501	ADP	N7-C8-N9	-2.21	108.12	114.36
3	A	501	ADP	O2B-PB-O3A	2.15	115.34	105.14
3	A	501	ADP	C2'-C3'-C4'	2.05	106.74	102.65

There are no chirality outliers.

There are no torsion outliers.

There are no ring outliers.

5.7 Other polymers ⓘ

There are no such residues in this entry.

5.8 Polymer linkage issues

There are no chain breaks in this entry.

6 Fit of model and data ⓘ

6.1 Protein, DNA and RNA chains ⓘ

In the following table, the column labelled ‘#RSRZ> 2’ contains the number (and percentage) of RSRZ outliers, followed by percent RSRZ outliers for the chain as percentile scores relative to all X-ray entries and entries of similar resolution. The OWAB column contains the minimum, median, 95th percentile and maximum values of the occupancy-weighted average B-factor per residue. The column labelled ‘Q< 0.9’ lists the number of (and percentage) of residues with an average occupancy less than 0.9.

Mol	Chain	Analysed	<RSRZ>	#RSRZ>2	OWAB(Å ²)	Q<0.9
1	A	451/452 (99%)	-0.18	7 (1%) 68 64	16, 24, 37, 56	0
1	B	449/452 (99%)	-0.07	7 (1%) 68 64	15, 28, 42, 55	0
All	All	900/904 (99%)	-0.12	14 (1%) 70 64	15, 26, 41, 56	0

All (14) RSRZ outliers are listed below:

Mol	Chain	Res	Type	RSRZ
1	A	451	HIS	4.4
1	B	221	ASP	3.8
1	B	25	ASP	3.7
1	A	348	LYS	3.2
1	A	347	ALA	2.5
1	B	222	ASP	2.5
1	B	147	PRO	2.5
1	A	349	ALA	2.4
1	A	172	ASN	2.4
1	A	351	ASN	2.4
1	B	351	ASN	2.3
1	B	70	ASN	2.2
1	B	407	VAL	2.1
1	A	246	ARG	2.0

6.2 Non-standard residues in protein, DNA, RNA chains ⓘ

In the following table, the Atoms column lists the number of modelled atoms in the group and the number defined in the chemical component dictionary. LLDF column lists the quality of electron density of the group with respect to its neighbouring residues in protein, DNA or RNA chains. The B-factors column lists the minimum, median, 95th percentile and maximum values of B factors of atoms in the group. The column labelled ‘Q< 0.9’ lists the number of atoms with occupancy less than 0.9.

Mol	Type	Chain	Res	Atoms	RSR	LLDF	B-factors(\AA^2)	Q<0.9
1	CSX	A	42[A]	1/8	0.13	0.77	19,19,19,19	1
1	CSX	A	42[B]	1/8	0.13	0.43	21,21,21,21	1
1	CSX	B	42[A]	1/8	0.13	-0.43	18,18,18,18	1
1	CSX	B	42[B]	1/8	0.13	-1.06	21,21,21,21	1

6.3 Carbohydrates

There are no carbohydrates in this entry.

6.4 Ligands

In the following table, the Atoms column lists the number of modelled atoms in the group and the number defined in the chemical component dictionary. LLDF column lists the quality of electron density of the group with respect to its neighbouring residues in protein, DNA or RNA chains. The B-factors column lists the minimum, median, 95th percentile and maximum values of B factors of atoms in the group. The column labelled 'Q< 0.9' lists the number of atoms with occupancy less than 0.9.

Mol	Type	Chain	Res	Atoms	RSR	LLDF	B-factors(\AA^2)	Q<0.9
3	ADP	B	501	27/27	0.16	2.63	37,43,59,61	0
2	FAD	A	500[*]	9/53	0.15	2.51	17,18,21,23	9
2	FAD	B	500[*]	9/53	0.15	1.38	22,24,27,28	9
3	ADP	A	501	27/27	0.09	-0.09	22,30,48,49	0

6.5 Other polymers

There are no such residues in this entry.