



Full wwPDB X-ray Structure Validation Report ⓘ

Mar 12, 2014 – 05:38 PM GMT

PDB ID : 4CD0
Title : Structure of L1196M Mutant Human Anaplastic Lymphoma Kinase in Complex with 2-(5-(6-amino-5-((R)-1-(5-fluoro-2-(2H-1,2,3-triazol-2-yl)phenyl)ethoxy)pyridin-3-yl)-4-methylthiazol-2-yl)propane-1,2-diol
Authors : McTigue, M.; Deng, Y.; Liu, W.; Brooun, A.; Stewart, A.
Deposited on : 2013-10-29
Resolution : 2.23 Å(reported)

This is a full wwPDB validation report for a publicly released PDB entry.
We welcome your comments at validation@mail.wwpdb.org
A user guide is available at <http://wwpdb.org/ValidationPDFNotes.html>

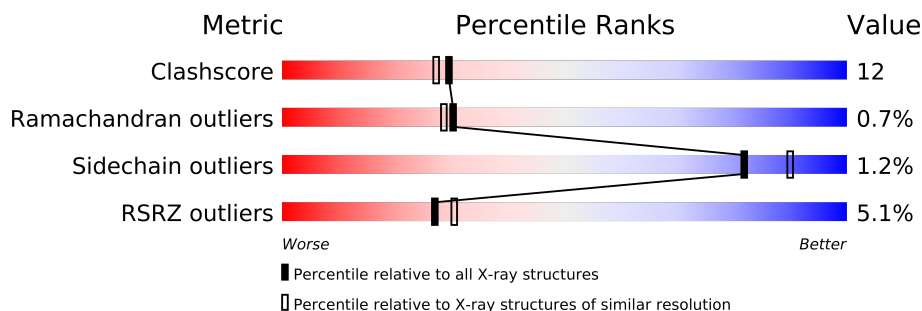
The following versions of software and data (see [references](#)) were used in the production of this report:

MolProbity : 4.02b-467
Mogul : 1.16 November 2013
Xtriage (Phenix) : dev-1323
EDS : trunk22714
Percentile statistics : 21963
Refmac : 5.8.0049
CCP4 : 6.3.0 (Settle)
Ideal geometry (proteins) : Engh & Huber (2001)
Ideal geometry (DNA, RNA) : Parkinson et. al. (1996)
Validation Pipeline (wwPDB-VP) : trunk22714

1 Overall quality at a glance

The reported resolution of this entry is 2.23 Å.

Percentile scores (ranging between 0-100) for global validation metrics of the entry are shown in the following graphic. The table shows the number of entries on which the scores are based.



Metric	Whole archive (#Entries)	Similar resolution (#Entries, resolution range(Å))
Clashscore	79885	1317 (2.26-2.22)
Ramachandran outliers	78287	1282 (2.26-2.22)
Sidechain outliers	78261	1282 (2.26-2.22)
RSRZ outliers	66119	1112 (2.26-2.22)

The table below summarises the geometric issues observed across the polymeric chains and their fit to the electron density. The red, orange, yellow and green segments on the lower bar indicate the fraction of residues that contain outliers for ≥ 3 , 2, 1 and 0 types of geometric quality criteria. The upper red bar (where present) indicates the fraction of residues that have poor fit to the electron density.

Mol	Chain	Length	Quality of chain
1	A	342	

2 Entry composition

There are 3 unique types of molecules in this entry. The entry contains 2531 atoms, of which 0 are hydrogen and 0 are deuterium.

In the tables below, the ZeroOcc column contains the number of atoms modelled with zero occupancy, the AltConf column contains the number of residues with at least one atom in alternate conformation and the Trace column contains the number of residues modelled with at most 2 atoms.

- Molecule 1 is a protein called ALK TYROSINE KINASE RECEPTOR.

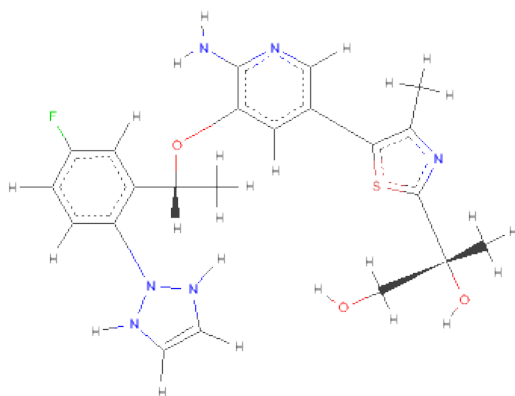
Mol	Chain	Residues	Atoms					ZeroOcc	AltConf	Trace
			Total	C	N	O	S			
1	A	296	2324	1482	396	424	22	0	0	1

There are 24 discrepancies between the modelled and reference sequences:

Chain	Residue	Modelled	Actual	Comment	Reference
A	1070	MET	-	EXPRESSION TAG	UNP Q9UM73
A	1071	ALA	-	EXPRESSION TAG	UNP Q9UM73
A	1072	HIS	-	EXPRESSION TAG	UNP Q9UM73
A	1073	HIS	-	EXPRESSION TAG	UNP Q9UM73
A	1074	HIS	-	EXPRESSION TAG	UNP Q9UM73
A	1075	HIS	-	EXPRESSION TAG	UNP Q9UM73
A	1076	HIS	-	EXPRESSION TAG	UNP Q9UM73
A	1077	HIS	-	EXPRESSION TAG	UNP Q9UM73
A	1078	ASP	-	EXPRESSION TAG	UNP Q9UM73
A	1079	TYR	-	EXPRESSION TAG	UNP Q9UM73
A	1080	GLY	-	EXPRESSION TAG	UNP Q9UM73
A	1081	ILE	-	EXPRESSION TAG	UNP Q9UM73
A	1082	PRO	-	EXPRESSION TAG	UNP Q9UM73
A	1083	THR	-	EXPRESSION TAG	UNP Q9UM73
A	1084	THR	-	EXPRESSION TAG	UNP Q9UM73
A	1085	GLU	-	EXPRESSION TAG	UNP Q9UM73
A	1086	ASN	-	EXPRESSION TAG	UNP Q9UM73
A	1087	LEU	-	EXPRESSION TAG	UNP Q9UM73
A	1088	TYR	-	EXPRESSION TAG	UNP Q9UM73
A	1089	PHE	-	EXPRESSION TAG	UNP Q9UM73
A	1090	GLN	-	EXPRESSION TAG	UNP Q9UM73
A	1091	GLY	-	EXPRESSION TAG	UNP Q9UM73
A	1092	SER	-	EXPRESSION TAG	UNP Q9UM73
A	1196	MET	LEU	ENGINEERED MUTATION	UNP Q9UM73

- Molecule 2 is (2R)-2-[5-(6-AMINO-5-{(1R)-1-[2-(1,3-DIHYDRO-2H-1,2,3-TRIAZOL-2-YL)-5-FLUOROPHENYL]ETHOXY}PYRIDIN-3-YL)-4-METHYL-1,3-THIAZOL-2-YL]PROP

ANE-1,2-DIOL (three-letter code: AWJ) (formula: $C_{22}H_{25}FN_6O_3S$).



Mol	Chain	Residues	Atoms						ZeroOcc	AltConf
			Total	C	F	N	O	S		
2	A	1	33	22	1	6	3	1	0	0

- Molecule 3 is water.

Mol	Chain	Residues	Atoms		ZeroOcc	AltConf
3	A	174	Total	O	0	0
			174	174		

3 Residue-property plots

These plots are drawn for all protein, RNA and DNA chains in the entry. The first graphic for a chain summarises the proportions of errors displayed in the second graphic. The second graphic shows the sequence view annotated by issues in geometry and electron density. Residues are color-coded according to the number of geometric quality criteria for which they contain at least one outlier: green = 0, yellow = 1, orange = 2 and red = 3 or more. A red dot above a residue indicates a poor fit to the electron density ($RSRZ > 2$). Stretches of 2 or more consecutive residues without any outlier are shown as a green connector. Residues present in the sample, but not in the model, are shown in grey.

• Molecule 1: ALK TYROSINE KINASE RECEPTOR



4 Data and refinement statistics

Property	Value	Source
Space group	P 21 21 21	Depositor
Cell constants a, b, c, α , β , γ	51.45Å 57.67Å 104.66Å 90.00° 90.00° 90.00°	Depositor
Resolution (Å)	52.33 – 2.23 52.33 – 2.23	Depositor EDS
% Data completeness (in resolution range)	99.2 (52.33-2.23) 99.8 (52.33-2.23)	Depositor EDS
R_{merge}	0.06	Depositor
R_{sym}	(Not available)	Depositor
$\langle I/\sigma(I) \rangle$ ¹	3.37 (at 2.25Å)	Xtriage
Refinement program	CNS 2005	Depositor
R, R_{free}	0.198 , 0.250 0.199 , (Not available)	Depositor DCC
R_{free} test set	No test flags present.	DCC
Wilson B-factor (Å ²)	35.8	Xtriage
Anisotropy	0.337	Xtriage
Bulk solvent k_{sol} (e/Å ³), B_{sol} (Å ²)	0.38 , 50.2	EDS
Estimated twinning fraction	No twinning to report.	Xtriage
L-test for twinning	$\langle L \rangle = 0.48$, $\langle L^2 \rangle = 0.32$	Xtriage
Outliers	0 of 15650 reflections	Xtriage
F_o, F_c correlation	0.95	EDS
Total number of atoms	2531	wwPDB-VP
Average B, all atoms (Å ²)	37.0	wwPDB-VP

Xtriage's analysis on translational NCS is as follows: *The largest off-origin peak in the Patterson function is 6.67% of the height of the origin peak. No significant pseudotranslation is detected.*

¹Intensities estimated from amplitudes.

5 Model quality

5.1 Standard geometry

Bond lengths and bond angles in the following residue types are not validated in this section: AWJ

The Z score for a bond length (or angle) is the number of standard deviations the observed value is removed from the expected value. A bond length (or angle) with $|Z| > 5$ is considered an outlier worth inspection. RMSZ is the root-mean-square of all Z scores of the bond lengths (or angles).

Mol	Chain	Bond lengths		Bond angles	
		RMSZ	$\# Z > 5$	RMSZ	$\# Z > 5$
1	A	0.29	0/2381	0.46	0/3225

There are no bond length outliers.

There are no bond angle outliers.

There are no chirality outliers.

There are no planarity outliers.

5.2 Close contacts

In the following table, the Non-H and H(model) columns list the number of non-hydrogen atoms and hydrogen atoms in the chain respectively. The H(added) column lists the number of hydrogens added by MolProbity. The Clashes column lists the number of clashes within the asymmetric unit, and the number in parentheses is this value normalized per 1000 atoms of the molecule in the chain. The Symm-Clashes column gives symmetry related clashes, in the same way as for the Clashes column.

Mol	Chain	Non-H	H(model)	H(added)	Clashes	Symm-Clashes
1	A	2324	0	2302	57	0
2	A	33	0	0	0	0
3	A	174	0	0	8	0
All	All	2531	0	2302	57	0

Clashscore is defined as the number of clashes calculated for the entry per 1000 atoms (including hydrogens) of the entry. The overall clashscore for this entry is 12.

All (57) close contacts within the same asymmetric unit are listed below.

Atom-1	Atom-2	Distance(Å)	Clash(Å)
1:A:1124:HIS:HB3	1:A:1129:GLU:HA	1.39	1.01

Continued on next page...

Continued from previous page...

Atom-1	Atom-2	Distance(Å)	Clash(Å)
1:A:1116:ILE:HD12	3:A:2028:HOH:O	1.82	0.78
1:A:1113:ARG:NH2	3:A:2032:HOH:O	2.21	0.73
1:A:1113:ARG:HA	3:A:2028:HOH:O	1.91	0.70
1:A:1248:ARG:CZ	1:A:1277:ILE:HG21	2.22	0.69
1:A:1186:SER:HB3	3:A:2032:HOH:O	1.91	0.69
1:A:1158:GLU:O	1:A:1162:LEU:HD13	1.94	0.67
1:A:1147:VAL:HG12	1:A:1183:ILE:CD1	2.24	0.67
1:A:1167:GLU:O	1:A:1171:ILE:HD13	1.95	0.67
1:A:1166:MET:HA	1:A:1166:MET:HE3	1.76	0.66
1:A:1171:ILE:HG22	1:A:1182:CYS:HB2	1.79	0.65
1:A:1124:HIS:HB3	1:A:1129:GLU:CA	2.25	0.63
1:A:1147:VAL:HG12	1:A:1183:ILE:HD12	1.82	0.61
1:A:1211:THR:HG22	1:A:1211:THR:O	2.02	0.60
1:A:1096:TYR:HB2	1:A:1166:MET:CE	2.33	0.59
1:A:1247:HIS:O	1:A:1248:ARG:HB2	2.01	0.59
1:A:1367:GLN:HB2	1:A:1373:ARG:HG2	1.85	0.58
1:A:1365:CYS:O	1:A:1373:ARG:HD2	2.03	0.58
1:A:1146:GLN:H	1:A:1146:GLN:CD	2.05	0.58
1:A:1214:ARG:HB2	1:A:1215:PRO:HD2	1.86	0.57
1:A:1248:ARG:NH2	1:A:1277:ILE:HG21	2.21	0.56
1:A:1369:GLN:HG2	3:A:2160:HOH:O	2.03	0.56
1:A:1163:ASP:OD1	1:A:1279:ARG:HD3	2.05	0.56
1:A:1231:ARG:HG2	1:A:1231:ARG:HH11	1.71	0.56
1:A:1248:ARG:NH1	1:A:1277:ILE:HG13	2.23	0.53
1:A:1273:MET:O	1:A:1277:ILE:HG12	2.10	0.52
1:A:1096:TYR:HB2	1:A:1166:MET:HE1	1.92	0.51
1:A:1171:ILE:N	1:A:1171:ILE:HD12	2.27	0.49
1:A:1324:SER:O	1:A:1325:LEU:HB2	2.13	0.48
1:A:1388:GLN:O	1:A:1390:PRO:HD3	2.14	0.48
1:A:1328:MET:SD	1:A:1329:PRO:HD2	2.53	0.48
1:A:1151:THR:HG22	1:A:1193:PHE:CE1	2.49	0.48
1:A:1147:VAL:HG12	1:A:1183:ILE:HD13	1.96	0.47
1:A:1193:PHE:N	3:A:2032:HOH:O	2.47	0.46
1:A:1123:GLY:O	1:A:1124:HIS:C	2.53	0.46
1:A:1208:LEU:O	1:A:1212:ARG:HG3	2.15	0.46
1:A:1369:GLN:HB3	1:A:1371:GLU:OE2	2.15	0.46
1:A:1193:PHE:HB2	3:A:2032:HOH:O	2.16	0.45
1:A:1094:PRO:HG2	1:A:1165:LEU:CD2	2.47	0.45
1:A:1180:VAL:HG21	1:A:1256:LEU:HD12	1.98	0.45
1:A:1339:LEU:O	1:A:1343:THR:HG23	2.17	0.45
1:A:1096:TYR:HB2	1:A:1166:MET:HE2	1.99	0.44
1:A:1352:LYS:O	1:A:1353:ASN:HB2	2.17	0.43

Continued on next page...

Continued from previous page...

Atom-1	Atom-2	Distance(Å)	Clash(Å)
1:A:1367:GLN:O	1:A:1373:ARG:HD3	2.19	0.43
1:A:1306:PHE:CD2	1:A:1310:THR:HG21	2.54	0.43
1:A:1124:HIS:CD2	1:A:1129:GLU:HB3	2.54	0.42
1:A:1094:PRO:HG2	1:A:1165:LEU:HD21	2.01	0.42
1:A:1259:CYS:HB2	1:A:1260:PRO:HD2	2.02	0.42
1:A:1356:GLY:N	1:A:1357:PRO:CD	2.83	0.42
1:A:1301:PHE:CE1	1:A:1339:LEU:HG	2.55	0.42
1:A:1193:PHE:CB	3:A:2032:HOH:O	2.68	0.41
1:A:1319:LEU:HD23	1:A:1319:LEU:HA	1.95	0.41
1:A:1279:ARG:CZ	1:A:1279:ARG:HB3	2.51	0.41
1:A:1096:TYR:CZ	1:A:1098:PHE:HB2	2.55	0.41
1:A:1166:MET:CE	1:A:1166:MET:HA	2.47	0.41
1:A:1390:PRO:O	1:A:1394:ASN:HB2	2.20	0.41
1:A:1370:PRO:HD2	1:A:1371:GLU:OE2	2.21	0.40

There are no symmetry-related clashes.

5.3 Torsion angles

5.3.1 Protein backbone ⓘ

In the following table, the Percentiles column shows the percent Ramachandran outliers of the chain as a percentile score with respect to all X-ray entries followed by that with respect to entries of similar resolution. The Analysed column shows the number of residues for which the backbone conformation was analysed, and the total number of residues.

Mol	Chain	Analysed	Favoured	Allowed	Outliers	Percentiles	
1	A	290/342 (85%)	280 (97%)	8 (3%)	2 (1%)	30	28

All (2) Ramachandran outliers are listed below:

Mol	Chain	Res	Type
1	A	1124	HIS
1	A	1125	GLY

5.3.2 Protein sidechains ⓘ

In the following table, the Percentiles column shows the percent sidechain outliers of the chain as a percentile score with respect to all X-ray entries followed by that with respect to entries of similar resolution. The Analysed column shows the number of residues for which the sidechain conformation was analysed, and the total number of residues.

Mol	Chain	Analysed	Rotameric	Outliers	Percentiles	
1	A	257/298 (86%)	254 (99%)	3 (1%)	82	90

All (3) residues with a non-rotameric sidechain are listed below:

Mol	Chain	Res	Type
1	A	1118	LEU
1	A	1124	HIS
1	A	1221	LEU

Some sidechains can be flipped to improve hydrogen bonding and reduce clashes. All (6) such sidechains are listed below:

Mol	Chain	Res	Type
1	A	1115	ASN
1	A	1188	GLN
1	A	1217	GLN
1	A	1238	GLN
1	A	1243	ASN
1	A	1364	GLN

5.3.3 RNA ⓘ

There are no RNA chains in this entry.

5.4 Non-standard residues in protein, DNA, RNA chains ⓘ

There are no non-standard protein/DNA/RNA residues in this entry.

5.5 Carbohydrates ⓘ

There are no carbohydrates in this entry.

5.6 Ligand geometry ⓘ

1 ligand is modelled in this entry.

In the following table, the Counts columns list the number of bonds (or angles) for which Mogul statistics could be retrieved, the number of bonds (or angles) that are observed in the model and the number of bonds (or angles) that are defined in the chemical component dictionary. The Link column lists molecule types, if any, to which the group is linked. The Z score for a bond length (or angle) is the number of standard deviations the observed value is removed from the expected

value. A bond length (or angle) with $|Z| > 2$ is considered an outlier worth inspection. RMSZ is the root-mean-square of all Z scores of the bond lengths (or angles).

Mol	Type	Chain	Res	Link	Bond lengths			Bond angles		
					Counts	RMSZ	$\# Z > 2$	Counts	RMSZ	$\# Z > 2$
2	AWJ	A	1500	-	34,36,36	1.51	8 (23%)	45,53,53	7.15	12 (26%)

In the following table, the Chirals column lists the number of chiral outliers, the number of chiral centers analysed, the number of these observed in the model and the number defined in the chemical component dictionary. Similar counts are reported in the Torsion and Rings columns. '-' means no outliers of that kind were identified.

Mol	Type	Chain	Res	Link	Chirals	Torsions	Rings
2	AWJ	A	1500	-	-	0/15/25/25	0/4/4/4

All (8) bond length outliers are listed below:

Mol	Chain	Res	Type	Atoms	Z	Observed(Å)	Ideal(Å)
2	A	1500	AWJ	C12-C10	3.81	1.45	1.40
2	A	1500	AWJ	C16-C10	2.79	1.44	1.39
2	A	1500	AWJ	C2-N8	2.57	1.40	1.34
2	A	1500	AWJ	C14-C15	2.42	1.41	1.37
2	A	1500	AWJ	O7-C9	2.36	1.46	1.42
2	A	1500	AWJ	C16-C15	2.26	1.41	1.37
2	A	1500	AWJ	C13-C12	2.15	1.43	1.39
2	A	1500	AWJ	C12-N18	-2.07	1.42	1.44

All (12) bond angle outliers are listed below:

Mol	Chain	Res	Type	Atoms	Z	Observed(°)	Ideal(°)
2	A	1500	AWJ	C30-C29-C26	33.41	112.60	106.74
2	A	1500	AWJ	C26-S27-C23	-32.99	91.32	96.32
2	A	1500	AWJ	C5-C23-C24	4.01	133.60	126.73
2	A	1500	AWJ	O7-C9-C10	2.87	112.09	107.40
2	A	1500	AWJ	C24-C23-S27	-2.62	108.15	110.12
2	A	1500	AWJ	C1-O7-C9	2.48	121.82	117.86
2	A	1500	AWJ	C10-C12-N18	2.42	123.31	118.68
2	A	1500	AWJ	C13-C12-C10	-2.35	120.26	122.79
2	A	1500	AWJ	C6-C1-C2	-2.31	116.61	119.67
2	A	1500	AWJ	C5-C6-C1	2.29	123.51	120.11
2	A	1500	AWJ	C6-C5-C4	-2.17	115.04	116.95
2	A	1500	AWJ	C23-C24-N25	2.06	114.98	110.68

There are no chirality outliers.

There are no torsion outliers.

There are no ring outliers.

5.7 Other polymers ⓘ

There are no such residues in this entry.

5.8 Polymer linkage issues

There are no chain breaks in this entry.

6 Fit of model and data ⓘ

6.1 Protein, DNA and RNA chains ⓘ

In the following table, the column labelled ‘#RSRZ> 2’ contains the number (and percentage) of RSRZ outliers, followed by percent RSRZ outliers for the chain as percentile scores relative to all X-ray entries and entries of similar resolution. The OWAB column contains the minimum, median, 95th percentile and maximum values of the occupancy-weighted average B-factor per residue. The column labelled ‘Q< 0.9’ lists the number of (and percentage) of residues with an average occupancy less than 0.9.

Mol	Chain	Analysed	<RSRZ>	#RSRZ>2		OWAB(Å ²)	Q<0.9
1	A	296/342 (86%)	0.09	15 (5%)	27 30	21, 33, 64, 79	0

All (15) RSRZ outliers are listed below:

Mol	Chain	Res	Type	RSRZ
1	A	1402	GLY	15.1
1	A	1126	ALA	8.1
1	A	1127	PHE	7.4
1	A	1124	HIS	4.7
1	A	1123	GLY	3.9
1	A	1214	ARG	3.9
1	A	1125	GLY	3.6
1	A	1216	SER	3.1
1	A	1217	GLN	2.7
1	A	1401	TYR	2.7
1	A	1146	GLN	2.6
1	A	1287	GLY	2.6
1	A	1105	ILE	2.6
1	A	1219	SER	2.4
1	A	1129	GLU	2.0

6.2 Non-standard residues in protein, DNA, RNA chains ⓘ

There are no non-standard protein/DNA/RNA residues in this entry.

6.3 Carbohydrates ⓘ

There are no carbohydrates in this entry.

6.4 Ligands

In the following table, the Atoms column lists the number of modelled atoms in the group and the number defined in the chemical component dictionary. LLDF column lists the quality of electron density of the group with respect to its neighbouring residues in protein, DNA or RNA chains. The B-factors column lists the minimum, median, 95th percentile and maximum values of B factors of atoms in the group. The column labelled 'Q < 0.9' lists the number of atoms with occupancy less than 0.9.

Mol	Type	Chain	Res	Atoms	RSR	LLDF	B-factors(Å ²)	Q<0.9
2	AWJ	A	1500	33/33	0.12	-0.22	20,30,37,41	0

6.5 Other polymers

There are no such residues in this entry.