



wwPDB X-ray Structure Validation Summary Report

Mar 27, 2014 – 02:51 PM EDT

PDB ID : 4CD7
Title : The structure of GH113 beta-mannanase AaManA from Alicyclobacillus acidocaldarius in complex with ManIFG and beta-1,4-mannobiose
Authors : Williams, R.J.; Iglesias-Fernandez, J.; Stepper, J.; Jackson, A.; Thompson, A.J.; Lowe, E.C.; White, J.M.; Gilbert, H.J.; Rovira, C.; Davies, G.J.; Williams, S.J.
Deposited on : 2013-10-30
Resolution : 1.65 Å(reported)

This is a wwPDB validation summary report for a publicly released PDB entry.
We welcome your comments at validation@mail.wwpdb.org
A user guide is available at <http://wwpdb.org/ValidationPDFNotes.html>

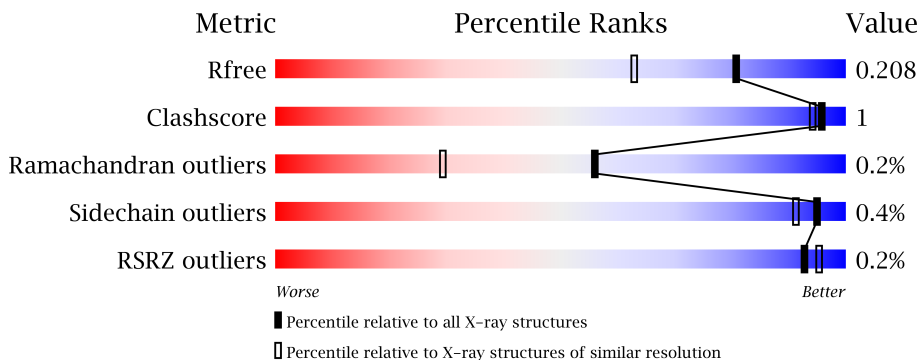
The following versions of software and data (see [references](#)) were used in the production of this report:

MolProbity : 4.02b-467
Mogul : 1.15 2013
Xtriage (Phenix) : dev-1439
EDS : stable22978
Percentile statistics : 21963
Refmac : 5.8.0049
CCP4 : 6.3.0 (Settle)
Ideal geometry (proteins) : Engh & Huber (2001)
Ideal geometry (DNA, RNA) : Parkinson et. al. (1996)
Validation Pipeline (wwPDB-VP) : stable22978

1 Overall quality at a glance

The reported resolution of this entry is 1.65 Å.

Percentile scores (ranging between 0-100) for global validation metrics of the entry are shown in the following graphic. The table shows the number of entries on which the scores are based.



Metric	Whole archive (#Entries)	Similar resolution (#Entries, resolution range(Å))
R_{free}	66092	1404 (1.68-1.64)
Clashscore	79885	1001 (1.66-1.66)
Ramachandran outliers	78287	1581 (1.68-1.64)
Sidechain outliers	78261	1580 (1.68-1.64)
RSRZ outliers	66119	1404 (1.68-1.64)

The table below summarises the geometric issues observed across the polymeric chains and their fit to the electron density. The red, orange, yellow and green segments on the lower bar indicate the fraction of residues that contain outliers for ≥ 3 , 2, 1 and 0 types of geometric quality criteria. The upper red bar (where present) indicates the fraction of residues that have poor fit to the electron density.

Mol	Chain	Length	Quality of chain
1	A	320	
1	B	320	

The following table lists non-polymeric compounds that are outliers for geometric or electron-density-fit criteria:

Mol	Type	Chain	Res	Geometry	Electron density
3	IFM	A	500	-	X
3	IFM	B	500	-	X
4	BMA	A	501	-	X
4	BMA	B	501	-	X

2 Entry composition i

There are 5 unique types of molecules in this entry. The entry contains 5595 atoms, of which 0 are hydrogen and 0 are deuterium.

In the tables below, the ZeroOcc column contains the number of atoms modelled with zero occupancy, the AltConf column contains the number of residues with at least one atom in alternate conformation and the Trace column contains the number of residues modelled with at most 2 atoms.

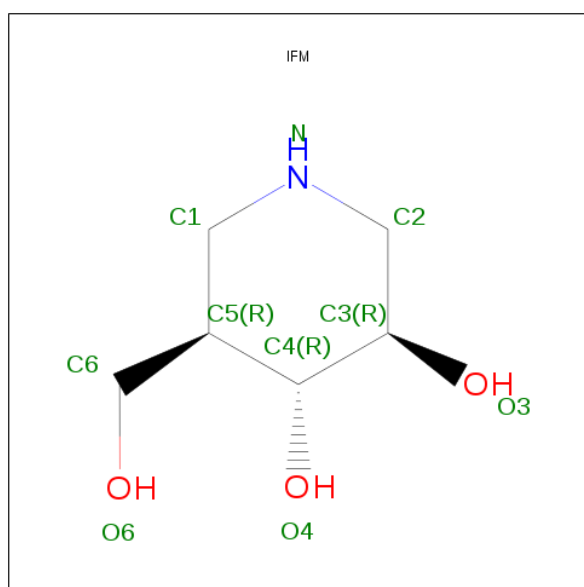
- Molecule 1 is a protein called ENDO-BETA-1,4-MANNANASE.

Mol	Chain	Residues	Atoms					ZeroOcc	AltConf	Trace
1	A	314	Total	C	N	O	S	0	5	0
			2513	1600	429	461	23			
1	B	314	Total	C	N	O	S	0	6	0
			2514	1604	423	464	23			

- Molecule 2 is a polymer of unknown type called SUGAR (2-MER).

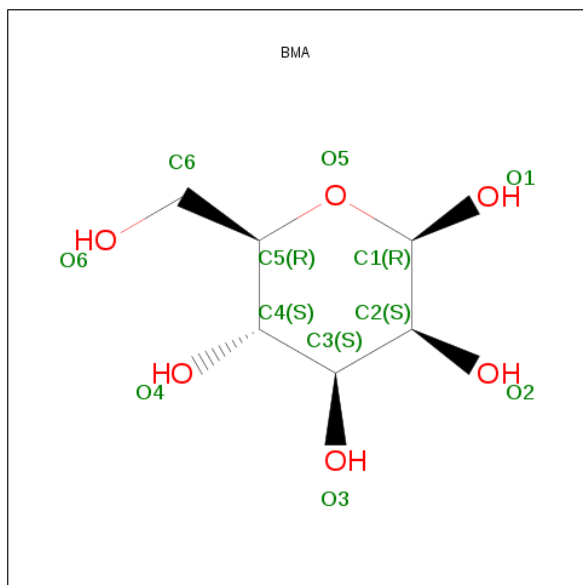
Mol	Chain	Residues	Atoms			ZeroOcc	AltConf
2	A	2	Total	C	O	0	0
			23	12	11		
2	B	2	Total	C	O	0	0
			23	12	11		

- Molecule 3 is 5-HYDROXYMETHYL-3,4-DIHYDROXYPIPERIDINE (three-letter code: IFM) (formula: $C_6H_{13}NO_3$).



Mol	Chain	Residues	Atoms				ZeroOcc	AltConf
3	A	1	Total	C	N	O	0	0
			10	6	1	3		
3	B	1	Total	C	N	O	0	0
			10	6	1	3		

- Molecule 4 is SUGAR (BETA-D-MANNOSE) (three-letter code: BMA) (formula: C₆H₁₂O₆).



Mol	Chain	Residues	Atoms			ZeroOcc	AltConf
4	A	1	Total	C	O	0	0
			11	6	5		
4	B	1	Total	C	O	0	0
			11	6	5		

- Molecule 5 is water.

Mol	Chain	Residues	Atoms		ZeroOcc	AltConf
5	A	234	Total	O	0	5
			239	239		
5	B	236	Total	O	0	5
			241	241		

3 Residue-property plots i

These plots are drawn for all protein, RNA and DNA chains in the entry. The first graphic for a chain summarises the proportions of errors displayed in the second graphic. The second graphic shows the sequence view annotated by issues in geometry and electron density. Residues are color-coded according to the number of geometric quality criteria for which they contain at least one outlier: green = 0, yellow = 1, orange = 2 and red = 3 or more. A red dot above a residue indicates a poor fit to the electron density ($RSRZ > 2$). Stretches of 2 or more consecutive residues without any outlier are shown as a green connector. Residues present in the sample, but not in the model, are shown in grey.

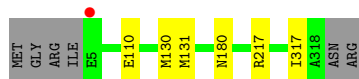
- Molecule 1: ENDO-BETA-1,4-MANNANASE

Chain A: 



- Molecule 1: ENDO-BETA-1,4-MANNANASE

Chain B: 



4 Data and refinement statistics

Property	Value	Source
Space group	P 21 21 21	Depositor
Cell constants a, b, c, α , β , γ	69.47Å 76.59Å 140.21Å 90.00° 90.00° 90.00°	Depositor
Resolution (Å)	70.11 – 1.65 70.11 – 1.65	Depositor EDS
% Data completeness (in resolution range)	97.3 (70.11-1.65) 97.4 (70.11-1.65)	Depositor EDS
R_{merge}	0.16	Depositor
R_{sym}	(Not available)	Depositor
$\langle I/\sigma(I) \rangle$ ¹	1.92 (at 1.65Å)	Xtriage
Refinement program	REFMAC 5.8.0033	Depositor
R, R_{free}	0.151 , 0.196 0.165 , 0.208	Depositor DCC
R_{free} test set	4466 reflections (5.33%)	DCC
Wilson B-factor (Å ²)	13.0	Xtriage
Anisotropy	0.263	Xtriage
Bulk solvent k_{sol} (e/Å ³), B_{sol} (Å ²)	0.35 , 31.2	EDS
Estimated twinning fraction	No twinning to report.	Xtriage
L-test for twinning	$\langle L \rangle = 0.45$, $\langle L^2 \rangle = 0.28$	Xtriage
Outliers	0 of 88258 reflections	Xtriage
F_o, F_c correlation	0.95	EDS
Total number of atoms	5595	wwPDB-VP
Average B, all atoms (Å ²)	16.0	wwPDB-VP

Xtriage's analysis on translational NCS is as follows: *The largest off-origin peak in the Patterson function is 3.90% of the height of the origin peak. No significant pseudotranslation is detected.*

¹Intensities estimated from amplitudes.

5 Model quality i

5.1 Standard geometry i

Bond lengths and bond angles in the following residue types are not validated in this section: IFM, BMA, MAN

The Z score for a bond length (or angle) is the number of standard deviations the observed value is removed from the expected value. A bond length (or angle) with $|Z| > 5$ is considered an outlier worth inspection. RMSZ is the root-mean-square of all Z scores of the bond lengths (or angles).

Mol	Chain	Bond lengths		Bond angles	
		RMSZ	$\# Z > 5$	RMSZ	$\# Z > 5$
1	A	0.56	0/2611	0.69	1/3551 (0.0%)
1	B	0.56	0/2617	0.72	2/3562 (0.1%)
All	All	0.56	0/5228	0.71	3/7113 (0.0%)

There are no bond length outliers.

All (3) bond angle outliers are listed below:

Mol	Chain	Res	Type	Atoms	Z	Observed(°)	Ideal(°)
1	B	217	ARG	NE-CZ-NH1	9.06	124.83	120.30
1	B	217	ARG	NE-CZ-NH2	-8.08	116.26	120.30
1	A	37	ARG	NE-CZ-NH1	5.42	123.01	120.30

There are no chirality outliers.

There are no planarity outliers.

5.2 Close contacts i

In the following table, the Non-H and H(model) columns list the number of non-hydrogen atoms and hydrogen atoms in the chain respectively. The H(added) column lists the number of hydrogens added by MolProbity. The Clashes column lists the number of clashes within the asymmetric unit, and the number in parentheses is this value normalized per 1000 atoms of the molecule in the chain. The Symm-Clashes column gives symmetry related clashes, in the same way as for the Clashes column.

Mol	Chain	Non-H	H(model)	H(added)	Clashes	Symm-Clashes
1	A	2513	0	0	3	0
1	B	2514	0	0	3	0
2	A	23	0	0	0	0
2	B	23	0	0	0	0

Continued on next page...

Continued from previous page...

Mol	Chain	Non-H	H(model)	H(added)	Clashes	Symm-Clashes
3	A	10	0	0	0	0
3	B	10	0	0	0	0
4	A	11	0	0	0	0
4	B	11	0	0	0	0
5	A	239	0	0	3	3
5	B	241	0	0	1	3
All	All	5595	0	0	6	3

Clashscore is defined as the number of clashes calculated for the entry per 1000 atoms (including hydrogens) of the entry. The overall clashscore for this entry is 1.

The worst 5 of 6 close contacts within the same asymmetric unit are listed below.

Atom-1	Atom-2	Distance(Å)	Clash(Å)
1:A:256:ASP:OD2	1:A:260:ARG:NH1	2.22	0.73
1:A:60[A]:ASP:OD1	5:A:2060:HOH:O	2.15	0.65
1:A:276:LYS:NZ	5:A:2223:HOH:O	2.37	0.57
1:B:130:MET:CE	1:B:131:MET:CE	2.86	0.54
5:A:2150:HOH:O	1:B:110:GLU:OE1	2.18	0.53

All (3) symmetry-related close contacts are listed below. The label for Atom-2 includes the symmetry operator and encoded unit-cell translations to be applied.

Atom-1	Atom-2	Distance(Å)	Clash(Å)
5:A:2232:HOH:O	5:B:2215:HOH:O[4_545]	0.67	1.53
5:A:2089:HOH:O	5:B:2170:HOH:O[3_445]	1.84	0.36
5:A:2133:HOH:O	5:B:2085:HOH:O[3_545]	1.93	0.27

5.3 Torsion angles

5.3.1 Protein backbone ⓘ

In the following table, the Percentiles column shows the percent Ramachandran outliers of the chain as a percentile score with respect to all X-ray entries followed by that with respect to entries of similar resolution. The Analysed column shows the number of residues for which the backbone conformation was analysed, and the total number of residues.

Mol	Chain	Analysed	Favoured	Allowed	Outliers	Percentiles	
1	A	317/320 (99%)	315 (99%)	2 (1%)	0	100	100
1	B	318/320 (99%)	314 (99%)	3 (1%)	1 (0%)	50	24
All	All	635/640 (99%)	629 (99%)	5 (1%)	1 (0%)	56	29

All (1) Ramachandran outliers are listed below:

Mol	Chain	Res	Type
1	B	317	ILE

5.3.2 Protein sidechains ⓘ

In the following table, the Percentiles column shows the percent sidechain outliers of the chain as a percentile score with respect to all X-ray entries followed by that with respect to entries of similar resolution. The Analysed column shows the number of residues for which the sidechain conformation was analysed, and the total number of residues.

Mol	Chain	Analysed	Rotameric	Outliers	Percentiles	
1	A	254/257 (99%)	253 (100%)	1 (0%)	95	91
1	B	254/257 (99%)	253 (100%)	1 (0%)	95	91
All	All	508/514 (99%)	506 (100%)	2 (0%)	95	91

All (2) residues with a non-rotameric sidechain are listed below:

Mol	Chain	Res	Type
1	A	180	ASN
1	B	180	ASN

Some sidechains can be flipped to improve hydrogen bonding and reduce clashes. There are no such sidechains identified.

5.3.3 RNA ⓘ

There are no RNA chains in this entry.

5.4 Non-standard residues in protein, DNA, RNA chains ⓘ

There are no non-standard protein/DNA/RNA residues in this entry.

5.5 Carbohydrates ⓘ

4 carbohydrates are modelled in this entry.

In the following table, the Counts columns list the number of bonds (or angles) for which Mogul statistics could be retrieved, the number of bonds (or angles) that are observed in the model and the number of bonds (or angles) that are defined in the chemical component dictionary. The Link

column lists molecule types, if any, to which the group is linked. The Z score for a bond length (or angle) is the number of standard deviations the observed value is removed from the expected value. A bond length (or angle) with $|Z| > 2$ is considered an outlier worth inspection. RMSZ is the root-mean-square of all Z scores of the bond lengths (or angles).

Mol	Type	Chain	Res	Link	Bond lengths			Bond angles		
					Counts	RMSZ	# $ Z > 2$	Counts	RMSZ	# $ Z > 2$
2	MAN	A	400	2	12,12,12	0.55	0	17,17,17	2.00	4 (23%)
2	BMA	A	401	2	10,11,12	0.61	0	11,15,17	1.03	0
2	MAN	B	400	2	12,12,12	0.54	0	17,17,17	2.33	6 (35%)
2	BMA	B	401	2	10,11,12	0.60	0	11,15,17	1.13	0

In the following table, the Chirals column lists the number of chiral outliers, the number of chiral centers analysed, the number of these observed in the model and the number defined in the chemical component dictionary. Similar counts are reported in the Torsion and Rings columns. '-' means no outliers of that kind were identified.

Mol	Type	Chain	Res	Link	Chirals	Torsions	Rings
2	MAN	A	400	2	-	0/2/22/22	0/1/1/1
2	BMA	A	401	2	-	0/2/19/22	0/1/1/1
2	MAN	B	400	2	-	0/2/22/22	0/1/1/1
2	BMA	B	401	2	-	0/2/19/22	0/1/1/1

There are no bond length outliers.

The worst 5 of 10 bond angle outliers are listed below:

Mol	Chain	Res	Type	Atoms	Z	Observed(°)	Ideal(°)
2	A	400	MAN	O1-C1-O5	5.99	126.46	110.32
2	B	400	MAN	C1-C2-C3	-4.84	102.86	110.53
2	B	400	MAN	O1-C1-O5	4.37	122.09	110.32
2	B	400	MAN	O5-C1-C2	4.11	116.23	109.86
2	A	400	MAN	C1-C2-C3	-2.95	105.85	110.53

There are no chirality outliers.

There are no torsion outliers.

There are no ring outliers.

5.6 Ligand geometry ⓘ

4 ligands are modelled in this entry.

In the following table, the Counts columns list the number of bonds (or angles) for which Mogul statistics could be retrieved, the number of bonds (or angles) that are observed in the model and

the number of bonds (or angles) that are defined in the chemical component dictionary. The Link column lists molecule types, if any, to which the group is linked. The Z score for a bond length (or angle) is the number of standard deviations the observed value is removed from the expected value. A bond length (or angle) with $|Z| > 2$ is considered an outlier worth inspection. RMSZ is the root-mean-square of all Z scores of the bond lengths (or angles).

Mol	Type	Chain	Res	Link	Bond lengths			Bond angles		
					Counts	RMSZ	$\# Z > 2$	Counts	RMSZ	$\# Z > 2$
3	IFM	A	500	4	10,10,10	0.77	0	13,13,13	2.16	2 (15%)
4	BMA	A	501	3	10,11,12	0.50	0	11,15,17	1.17	1 (9%)
3	IFM	B	500	4	10,10,10	0.77	0	13,13,13	2.23	2 (15%)
4	BMA	B	501	3	10,11,12	0.35	0	11,15,17	1.39	1 (9%)

In the following table, the Chirals column lists the number of chiral outliers, the number of chiral centers analysed, the number of these observed in the model and the number defined in the chemical component dictionary. Similar counts are reported in the Torsion and Rings columns. '-' means no outliers of that kind were identified.

Mol	Type	Chain	Res	Link	Chirals	Torsions	Rings
3	IFM	A	500	4	-	0/2/16/16	0/1/1/1
4	BMA	A	501	3	-	0/2/19/22	0/1/1/1
3	IFM	B	500	4	-	0/2/16/16	0/1/1/1
4	BMA	B	501	3	-	0/2/19/22	0/1/1/1

There are no bond length outliers.

The worst 5 of 6 bond angle outliers are listed below:

Mol	Chain	Res	Type	Atoms	Z	Observed(°)	Ideal(°)
3	A	500	IFM	C1-N-C2	6.32	122.15	111.59
3	B	500	IFM	C1-N-C2	6.20	121.94	111.59
3	B	500	IFM	C2-C3-C4	4.02	115.04	110.23
4	B	501	BMA	O5-C5-C6	3.52	110.67	106.98
3	A	500	IFM	C2-C3-C4	3.28	114.16	110.23

There are no chirality outliers.

There are no torsion outliers.

There are no ring outliers.

5.7 Other polymers ⓘ

There are no such residues in this entry.

5.8 Polymer linkage issues

There are no chain breaks in this entry.

6 Fit of model and data ⓘ

6.1 Protein, DNA and RNA chains ⓘ

In the following table, the column labelled ‘#RSRZ> 2’ contains the number (and percentage) of RSRZ outliers, followed by percent RSRZ outliers for the chain as percentile scores relative to all X-ray entries and entries of similar resolution. The OWAB column contains the minimum, median, 95th percentile and maximum values of the occupancy-weighted average B-factor per residue. The column labelled ‘Q< 0.9’ lists the number of (and percentage) of residues with an average occupancy less than 0.9.

Mol	Chain	Analysed	<RSRZ>	#RSRZ>2	OWAB(Å ²)	Q<0.9
1	A	314/320 (98%)	-0.61	0 100 100	8, 13, 29, 42	0
1	B	314/320 (98%)	-0.56	1 (0%) 91 95	8, 13, 32, 42	1 (0%)
All	All	628/640 (98%)	-0.59	1 (0%) 93 95	8, 13, 30, 42	1 (0%)

All (1) RSRZ outliers are listed below:

Mol	Chain	Res	Type	RSRZ
1	B	5	GLU	2.3

6.2 Non-standard residues in protein, DNA, RNA chains ⓘ

There are no non-standard protein/DNA/RNA residues in this entry.

6.3 Carbohydrates ⓘ

In the following table, the Atoms column lists the number of modelled atoms in the group and the number defined in the chemical component dictionary. LLDF column lists the quality of electron density of the group with respect to its neighbouring residues in protein, DNA or RNA chains. The B-factors column lists the minimum, median, 95th percentile and maximum values of B factors of atoms in the group. The column labelled ‘Q< 0.9’ lists the number of atoms with occupancy less than 0.9.

Mol	Type	Chain	Res	Atoms	RSR	LLDF	B-factors(Å ²)	Q<0.9
2	MAN	B	400	12/12	0.13	4.94	20,22,27,40	0
2	MAN	A	400	12/12	0.12	4.06	22,30,41,43	0
2	BMA	B	401	11/12	0.08	1.08	17,20,23,25	0
2	BMA	A	401	11/12	0.08	0.70	21,26,29,31	0

6.4 Ligands ⓘ

In the following table, the Atoms column lists the number of modelled atoms in the group and the number defined in the chemical component dictionary. LLDF column lists the quality of electron density of the group with respect to its neighbouring residues in protein, DNA or RNA chains. The B-factors column lists the minimum, median, 95th percentile and maximum values of B factors of atoms in the group. The column labelled 'Q< 0.9' lists the number of atoms with occupancy less than 0.9.

Mol	Type	Chain	Res	Atoms	RSR	LLDF	B-factors(Å ²)	Q<0.9
4	BMA	A	501	11/12	0.15	4.21	24,27,32,34	0
4	BMA	B	501	11/12	0.12	3.72	19,24,26,31	0
3	IFM	B	500	10/10	0.09	2.34	17,19,22,25	0
3	IFM	A	500	10/10	0.10	2.33	15,21,23,24	0

6.5 Other polymers ⓘ

There are no such residues in this entry.