



Full wwPDB X-ray Structure Validation Report

Aug 7, 2014 – 08:16 PM EDT

PDB ID : 4CDN
Title : Crystal structure of M. mazei photolyase with its in vivo reconstituted 8-HDF antenna chromophore
Authors : Kiontke, S.; Batschauer, A.; Essen, L.-O.
Deposited on : 2013-11-01
Resolution : 1.90 Å(reported)

This is a full wwPDB validation report for a publicly released PDB entry.
We welcome your comments at validation@mail.wwpdb.org
A user guide is available at <http://wwpdb.org/ValidationPDFNotes.html>

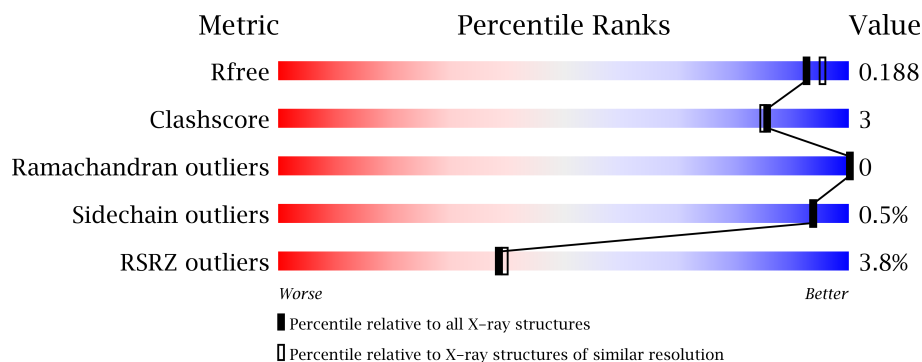
The following versions of software and data (see [references](#)) were used in the production of this report:

MolProbity : 4.02b-467
Mogul : 1.16 November 2013
Xtriage (Phenix) : dev-1439
EDS : stable23489
Percentile statistics : 21963
Refmac : 5.8.0049
CCP4 : 6.3.0 (Settle)
Ideal geometry (proteins) : Engh & Huber (2001)
Ideal geometry (DNA, RNA) : Parkinson et. al. (1996)
Validation Pipeline (wwPDB-VP) : stable23489

1 Overall quality at a glance

The reported resolution of this entry is 1.90 Å.

Percentile scores (ranging between 0-100) for global validation metrics of the entry are shown in the following graphic. The table shows the number of entries on which the scores are based.



Metric	Whole archive (#Entries)	Similar resolution (#Entries, resolution range(Å))
R_{free}	66092	3684 (1.90-1.90)
Clashscore	79885	4465 (1.90-1.90)
Ramachandran outliers	78287	4413 (1.90-1.90)
Sidechain outliers	78261	4414 (1.90-1.90)
RSRZ outliers	66119	3686 (1.90-1.90)

The table below summarises the geometric issues observed across the polymeric chains and their fit to the electron density. The red, orange, yellow and green segments on the lower bar indicate the fraction of residues that contain outliers for ≥ 3 , 2, 1 and 0 types of geometric quality criteria. The upper red bar (where present) indicates the fraction of residues that have poor fit to the electron density.

Mol	Chain	Length	Quality of chain
1	A	482	
1	B	482	

The following table lists non-polymeric compounds that are outliers for geometric or electron-density-fit criteria:

Mol	Type	Chain	Res	Geometry	Electron density
4	GOL	A	1463	-	X
4	GOL	B	1464	-	X
5	SO4	A	1466	-	X
5	SO4	B	1466	-	X
6	PGE	A	1467	-	X
6	PGE	A	1469	-	X

Continued on next page...

Continued from previous page...

Mol	Type	Chain	Res	Geometry	Electron density
7	PEG	A	1470	-	X
7	PEG	A	1471	-	X
7	PEG	A	1472	-	X

2 Entry composition

There are 8 unique types of molecules in this entry. The entry contains 8267 atoms, of which 0 are hydrogen and 0 are deuterium.

In the tables below, the ZeroOcc column contains the number of atoms modelled with zero occupancy, the AltConf column contains the number of residues with at least one atom in alternate conformation and the Trace column contains the number of residues modelled with at most 2 atoms.

- Molecule 1 is a protein called DEOXYRIBODIPYRIMIDINEPHOTOLYASE.

Mol	Chain	Residues	Atoms					ZeroOcc	AltConf	Trace
1	A	463	Total	C	N	O	S	0	9	0
			3762	2420	630	697	15			
1	B	438	Total	C	N	O	S	0	7	0
			3564	2291	596	662	15			

There are 42 discrepancies between the modelled and reference sequences:

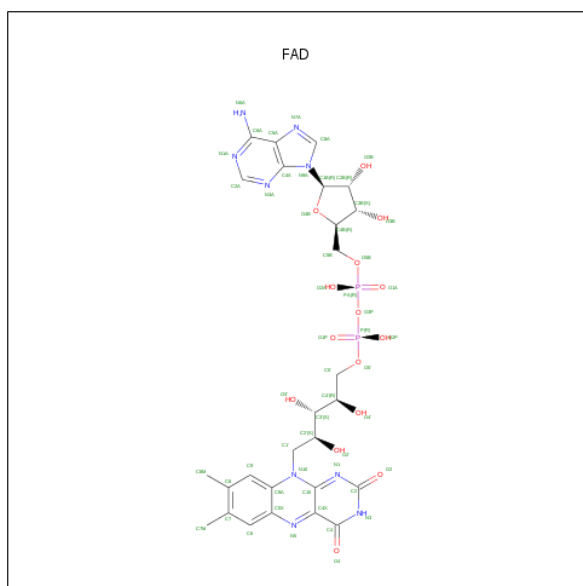
Chain	Residue	Modelled	Actual	Comment	Reference
A	-17	MET	-	EXPRESSION TAG	UNP Q8PYK9
A	-16	GLY	-	EXPRESSION TAG	UNP Q8PYK9
A	-15	SER	-	EXPRESSION TAG	UNP Q8PYK9
A	-14	SER	-	EXPRESSION TAG	UNP Q8PYK9
A	-13	HIS	-	EXPRESSION TAG	UNP Q8PYK9
A	-12	HIS	-	EXPRESSION TAG	UNP Q8PYK9
A	-11	HIS	-	EXPRESSION TAG	UNP Q8PYK9
A	-10	HIS	-	EXPRESSION TAG	UNP Q8PYK9
A	-9	HIS	-	EXPRESSION TAG	UNP Q8PYK9
A	-8	HIS	-	EXPRESSION TAG	UNP Q8PYK9
A	-7	SER	-	EXPRESSION TAG	UNP Q8PYK9
A	-6	SER	-	EXPRESSION TAG	UNP Q8PYK9
A	-5	GLY	-	EXPRESSION TAG	UNP Q8PYK9
A	-4	LEU	-	EXPRESSION TAG	UNP Q8PYK9
A	-3	VAL	-	EXPRESSION TAG	UNP Q8PYK9
A	-2	PRO	-	EXPRESSION TAG	UNP Q8PYK9
A	-1	ARG	-	EXPRESSION TAG	UNP Q8PYK9
A	0	GLY	-	EXPRESSION TAG	UNP Q8PYK9
A	1	SER	-	EXPRESSION TAG	UNP Q8PYK9
A	2	HIS	-	EXPRESSION TAG	UNP Q8PYK9
A	377	THR	MET	CLONING ARTIFACT	UNP Q8PYK9
B	-17	MET	-	EXPRESSION TAG	UNP Q8PYK9
B	-16	GLY	-	EXPRESSION TAG	UNP Q8PYK9
B	-15	SER	-	EXPRESSION TAG	UNP Q8PYK9
B	-14	SER	-	EXPRESSION TAG	UNP Q8PYK9

Continued on next page...

Continued from previous page...

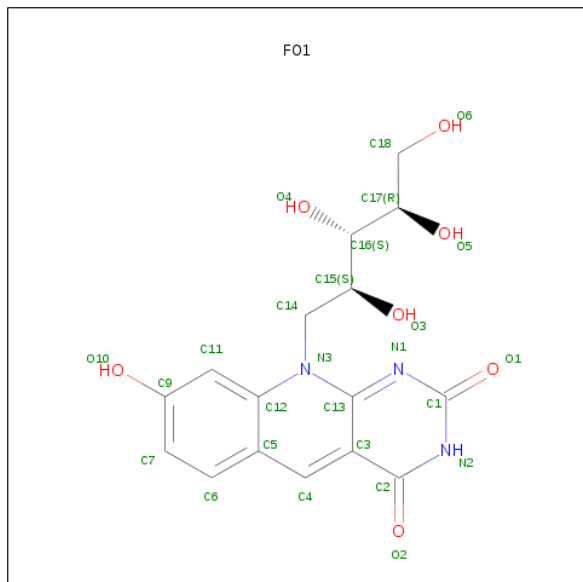
Chain	Residue	Modelled	Actual	Comment	Reference
B	-13	HIS	-	EXPRESSION TAG	UNP Q8PYK9
B	-12	HIS	-	EXPRESSION TAG	UNP Q8PYK9
B	-11	HIS	-	EXPRESSION TAG	UNP Q8PYK9
B	-10	HIS	-	EXPRESSION TAG	UNP Q8PYK9
B	-9	HIS	-	EXPRESSION TAG	UNP Q8PYK9
B	-8	HIS	-	EXPRESSION TAG	UNP Q8PYK9
B	-7	SER	-	EXPRESSION TAG	UNP Q8PYK9
B	-6	SER	-	EXPRESSION TAG	UNP Q8PYK9
B	-5	GLY	-	EXPRESSION TAG	UNP Q8PYK9
B	-4	LEU	-	EXPRESSION TAG	UNP Q8PYK9
B	-3	VAL	-	EXPRESSION TAG	UNP Q8PYK9
B	-2	PRO	-	EXPRESSION TAG	UNP Q8PYK9
B	-1	ARG	-	EXPRESSION TAG	UNP Q8PYK9
B	0	GLY	-	EXPRESSION TAG	UNP Q8PYK9
B	1	SER	-	EXPRESSION TAG	UNP Q8PYK9
B	2	HIS	-	EXPRESSION TAG	UNP Q8PYK9
B	377	THR	MET	CLONING ARTIFACT	UNP Q8PYK9

- Molecule 2 is FLAVIN-ADENINE DINUCLEOTIDE (three-letter code: FAD) (formula: $C_{27}H_{33}N_9O_{15}P_2$).



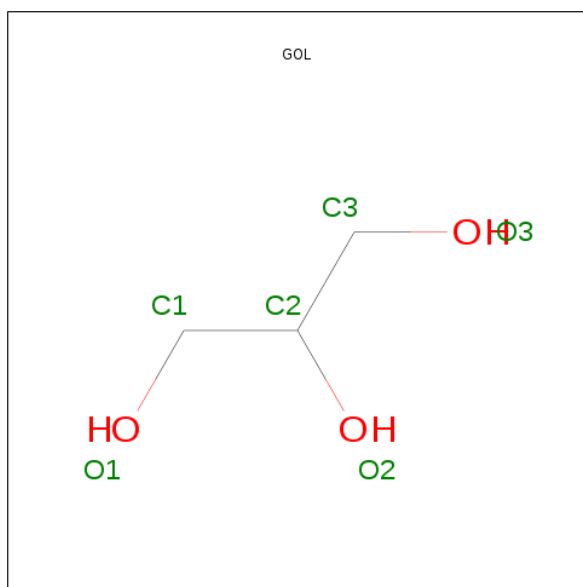
Mol	Chain	Residues	Atoms					ZeroOcc	AltConf
2	A	1	Total	C	N	O	P	0	0
			53	27	9	15	2		
2	B	1	Total	C	N	O	P	0	0
			53	27	9	15	2		

- Molecule 3 is 1-DEOXY-1-(8-HYDROXY-2,4-DIOXO-3,4-DIHYDROPYRIMIDO[4,5-B]QUINOLIN-10(2H)-YL)-D-RIBITOL (three-letter code: FO1) (formula: $C_{16}H_{17}N_3O_7$).



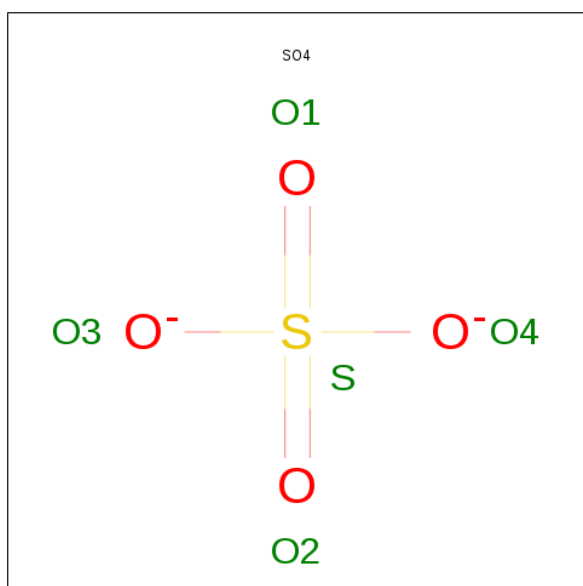
Mol	Chain	Residues	Atoms				ZeroOcc	AltConf
3	A	1	Total	C	N	O	0	0
			26	16	3	7		
3	B	1	Total	C	N	O	0	0
			26	16	3	7		

- Molecule 4 is GLYCEROL (three-letter code: GOL) (formula: $C_3H_8O_3$).



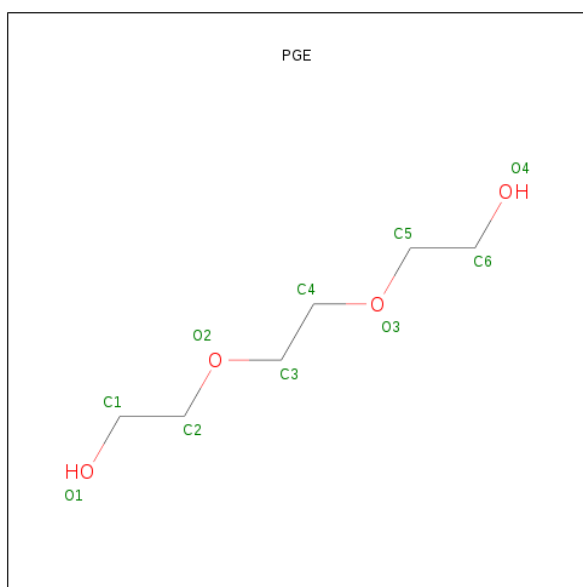
Mol	Chain	Residues	Atoms	ZeroOcc	AltConf
4	A	1	Total C O 6 3 3	0	0
4	A	1	Total C O 6 3 3	0	0
4	A	1	Total C O 6 3 3	0	0
4	B	1	Total C O 6 3 3	0	0
4	B	1	Total C O 6 3 3	0	0

- Molecule 5 is SULFATE ION (three-letter code: SO4) (formula: O₄S).



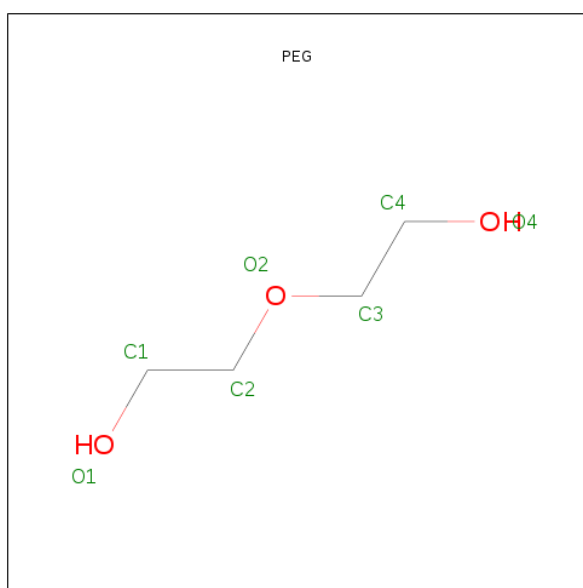
Mol	Chain	Residues	Atoms	ZeroOcc	AltConf
5	A	1	Total O S 5 4 1	0	0
5	B	1	Total O S 5 4 1	0	0
5	B	1	Total O S 5 4 1	0	0

- Molecule 6 is TRIETHYLENE GLYCOL (three-letter code: PGE) (formula: C₆H₁₄O₄).



Mol	Chain	Residues	Atoms			ZeroOcc	AltConf
6	A	1	Total	C	O	0	0
			10	6	4		
6	A	1	Total	C	O	0	0
			10	6	4		

- Molecule 7 is DI(HYDROXYETHYL)ETHER (three-letter code: PEG) (formula: $C_4H_{10}O_3$).



Mol	Chain	Residues	Atoms			ZeroOcc	AltConf
7	A	1	Total	C	O	0	0
			7	4	3		
7	A	1	Total	C	O	0	0
			7	4	3		

Continued on next page...

Continued from previous page...

Mol	Chain	Residues	Atoms			ZeroOcc	AltConf
7	A	1	Total	C	O	0	0
			7	4	3		
7	A	1	Total	C	O	0	0
			7	4	3		

- Molecule 8 is water.

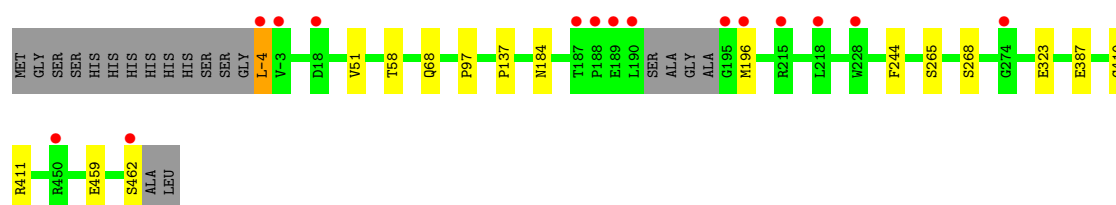
Mol	Chain	Residues	Atoms		ZeroOcc	AltConf
8	A	377	Total	O	0	0
			377	377		
8	B	313	Total	O	0	0
			313	313		

3 Residue-property plots

These plots are drawn for all protein, RNA and DNA chains in the entry. The first graphic for a chain summarises the proportions of errors displayed in the second graphic. The second graphic shows the sequence view annotated by issues in geometry and electron density. Residues are color-coded according to the number of geometric quality criteria for which they contain at least one outlier: green = 0, yellow = 1, orange = 2 and red = 3 or more. A red dot above a residue indicates a poor fit to the electron density ($RSRZ > 2$). Stretches of 2 or more consecutive residues without any outlier are shown as a green connector. Residues present in the sample, but not in the model, are shown in grey.

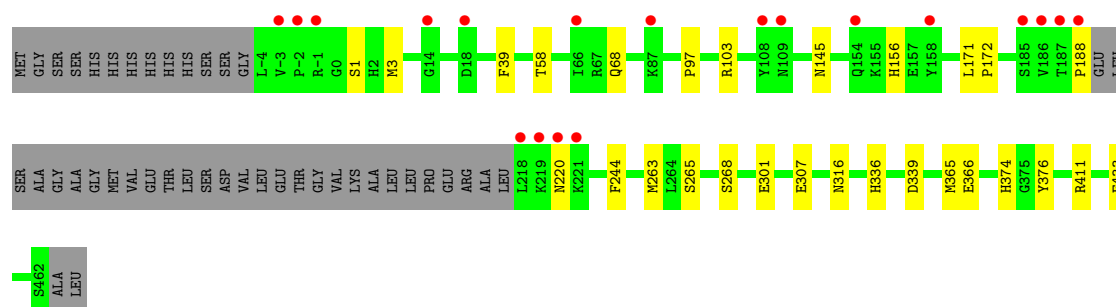
• Molecule 1: DEOXYRIBODIPYRIMIDINEPHOTOLYASE

Chain A: 



• Molecule 1: DEOXYRIBODIPYRIMIDINEPHOTOLYASE

Chain B: 



4 Data and refinement statistics

Property	Value	Source
Space group	P 21 21 21	Depositor
Cell constants a, b, c, α , β , γ	78.97Å 114.74Å 141.36Å 90.00° 90.00° 90.00°	Depositor
Resolution (Å)	34.47 – 1.90 34.47 – 1.90	Depositor EDS
% Data completeness (in resolution range)	98.1 (34.47-1.90) 98.1 (34.47-1.90)	Depositor EDS
R_{merge}	0.04	Depositor
R_{sym}	(Not available)	Depositor
$\langle I/\sigma(I) \rangle$ ¹	3.18 (at 1.89Å)	Xtriage
Refinement program	REFMAC 5.7.0029	Depositor
R, R_{free}	0.149 , 0.178 0.159 , 0.188	Depositor DCC
R_{free} test set	2022 reflections (2.07%)	DCC
Wilson B-factor (Å ²)	25.8	Xtriage
Anisotropy	0.492	Xtriage
Bulk solvent k_{sol} (e/Å ³), B_{sol} (Å ²)	0.41 , 47.3	EDS
Estimated twinning fraction	No twinning to report.	Xtriage
L-test for twinning	$\langle L \rangle = 0.48$, $\langle L^2 \rangle = 0.31$	Xtriage
Outliers	0 of 99823 reflections	Xtriage
F_o, F_c correlation	0.97	EDS
Total number of atoms	8267	wwPDB-VP
Average B, all atoms (Å ²)	30.0	wwPDB-VP

Xtriage's analysis on translational NCS is as follows: *The largest off-origin peak in the Patterson function is 3.49% of the height of the origin peak. No significant pseudotranslation is detected.*

¹Intensities estimated from amplitudes.

5 Model quality

5.1 Standard geometry

Bond lengths and bond angles in the following residue types are not validated in this section: GOL, PGE, FO1, SO4, PEG, FAD

The Z score for a bond length (or angle) is the number of standard deviations the observed value is removed from the expected value. A bond length (or angle) with $|Z| > 5$ is considered an outlier worth inspection. RMSZ is the root-mean-square of all Z scores of the bond lengths (or angles).

Mol	Chain	Bond lengths		Bond angles	
		RMSZ	$\# Z > 5$	RMSZ	$\# Z > 5$
1	A	0.51	0/3890	0.65	0/5266
1	B	0.50	0/3685	0.63	0/4990
All	All	0.51	0/7575	0.64	0/10256

There are no bond length outliers.

There are no bond angle outliers.

There are no chirality outliers.

There are no planarity outliers.

5.2 Close contacts

In the following table, the Non-H and H(model) columns list the number of non-hydrogen atoms and hydrogen atoms in the chain respectively. The H(added) column lists the number of hydrogens added by MolProbity. The Clashes column lists the number of clashes within the asymmetric unit, and the number in parentheses is this value normalized per 1000 atoms of the molecule in the chain. The Symm-Clashes column gives symmetry related clashes, in the same way as for the Clashes column.

Mol	Chain	Non-H	H(model)	H(added)	Clashes	Symm-Clashes
1	A	3762	0	3681	14	0
1	B	3564	0	3444	25	0
2	A	53	0	31	2	0
2	B	53	0	31	3	0
3	A	26	0	16	0	0
3	B	26	0	16	0	0
4	A	18	0	24	0	0
4	B	12	0	16	2	0
5	A	5	0	0	0	0
5	B	10	0	0	0	0

Continued on next page...

Continued from previous page...

Mol	Chain	Non-H	H(model)	H(added)	Clashes	Symm-Clashes
6	A	20	0	28	2	0
7	A	28	0	40	3	0
8	A	377	0	0	3	0
8	B	313	0	0	7	0
All	All	8267	0	7327	40	0

Clashscore is defined as the number of clashes calculated for the entry per 1000 atoms (including hydrogens) of the entry. The overall clashscore for this entry is 3.

All (40) close contacts within the same asymmetric unit are listed below.

Atom-1	Atom-2	Distance(Å)	Clash(Å)
1:A:137:PRO:HB3	6:A:1469:PGE:H4	1.63	0.79
1:A:387:GLU:HG2	7:A:1470:PEG:H11	1.73	0.70
1:A:387:GLU:HG2	7:A:1470:PEG:C1	2.26	0.65
1:B:336:HIS:HD2	1:B:339:ASP:OD2	1.84	0.61
1:B:365[A]:MET:HE3	1:B:365[A]:MET:HA	1.82	0.61
1:A:51:VAL:H	1:A:184:ASN:HD21	1.48	0.60
1:B:374:HIS:CD2	1:B:376:TYR:H	2.21	0.58
1:B:336:HIS:HE1	1:B:433:GLU:OE2	1.87	0.58
1:B:103:ARG:CB	8:B:2092:HOH:O	2.53	0.57
1:B:374:HIS:HD2	1:B:376:TYR:H	1.53	0.55
1:B:3:MET:HB3	1:B:39:PHE:CZ	2.44	0.53
1:A:462:SER:C	8:A:2371:HOH:O	2.48	0.51
1:B:336:HIS:CD2	1:B:339:ASP:OD2	2.62	0.51
1:A:459:GLU:HG3	8:A:2368:HOH:O	2.14	0.47
1:B:366:GLU:OE2	4:B:1463:GOL:H32	2.15	0.47
1:B:244:PHE:CD1	1:B:265:SER:HA	2.49	0.47
1:B:365[A]:MET:HA	1:B:365[A]:MET:CE	2.43	0.46
1:B:58:THR:HG22	1:B:97:PRO:HD3	1.97	0.46
1:B:156:HIS:CD2	1:B:316:ASN:HD21	2.34	0.46
1:B:263:MET:HB3	8:B:2179:HOH:O	2.16	0.45
1:A:68:GLN:HG2	1:A:411:ARG:NH2	2.31	0.45
1:A:244:PHE:CD1	1:A:265:SER:HA	2.51	0.45
1:A:268:SER:HB3	2:A:998:FAD:H5'2	1.98	0.44
1:B:268:SER:HB3	2:B:998:FAD:H5'2	2.00	0.44
1:B:188:PRO:CD	8:B:2083:HOH:O	2.64	0.43
1:B:336:HIS:CE1	1:B:433:GLU:OE2	2.69	0.43
1:A:323:GLU:OE2	8:A:2279:HOH:O	2.21	0.43
1:A:410:GLY:HA2	2:A:998:FAD:O4	2.19	0.42
1:B:263:MET:CG	8:B:2179:HOH:O	2.66	0.42
1:B:145:ASN:HD22	1:B:307:GLU:HG2	1.84	0.42
1:B:374:HIS:HE1	8:B:2185:HOH:O	2.01	0.42

Continued on next page...

Continued from previous page...

Atom-1	Atom-2	Distance(Å)	Clash(Å)
1:A:387:GLU:HG2	7:A:1470:PEG:H12	2.00	0.42
1:A:58[A]:THR:HG22	1:A:97:PRO:HD3	2.01	0.42
1:A:-4:LEU:HG	6:A:1469:PGE:H32	2.00	0.42
1:B:188:PRO:HD3	8:B:2083:HOH:O	2.19	0.42
1:B:301:GLU:HB3	2:B:998:FAD:C8A	2.51	0.41
1:B:68:GLN:HG2	1:B:411:ARG:NH2	2.36	0.41
2:B:998:FAD:H62A	4:B:1464:GOL:H2	1.85	0.41
1:B:263:MET:CB	8:B:2179:HOH:O	2.69	0.41
1:B:171:LEU:N	1:B:172:PRO:CD	2.84	0.40

There are no symmetry-related clashes.

5.3 Torsion angles

5.3.1 Protein backbone ⓘ

In the following table, the Percentiles column shows the percent Ramachandran outliers of the chain as a percentile score with respect to all X-ray entries followed by that with respect to entries of similar resolution.

The Analysed column shows the number of residues for which the backbone conformation was analysed, and the total number of residues.

Mol	Chain	Analysed	Favoured	Allowed	Outliers	Percentiles	
1	A	468/482 (97%)	462 (99%)	6 (1%)	0	100	100
1	B	441/482 (92%)	433 (98%)	8 (2%)	0	100	100
All	All	909/964 (94%)	895 (98%)	14 (2%)	0	100	100

There are no Ramachandran outliers to report.

5.3.2 Protein sidechains ⓘ

In the following table, the Percentiles column shows the percent sidechain outliers of the chain as a percentile score with respect to all X-ray entries followed by that with respect to entries of similar resolution. The Analysed column shows the number of residues for which the sidechain conformation was analysed, and the total number of residues.

Mol	Chain	Analysed	Rotameric	Outliers	Percentiles	
1	A	404/416 (97%)	402 (100%)	2 (0%)	94	94
1	B	381/416 (92%)	379 (100%)	2 (0%)	94	94

Continued on next page...

Continued from previous page...

Mol	Chain	Analysed	Rotameric	Outliers	Percentiles	
All	All	785/832 (94%)	781 (100%)	4 (0%)	94	94

All (4) residues with a non-rotameric sidechain are listed below:

Mol	Chain	Res	Type
1	A	-4	LEU
1	A	196	MET
1	B	1	SER
1	B	220	ASN

Some sidechains can be flipped to improve hydrogen bonding and reduce clashes. All (9) such sidechains are listed below:

Mol	Chain	Res	Type
1	A	145	ASN
1	A	184	ASN
1	A	316	ASN
1	B	145	ASN
1	B	156	HIS
1	B	257	ASN
1	B	336	HIS
1	B	343	HIS
1	B	374	HIS

5.3.3 RNA ⓘ

There are no RNA chains in this entry.

5.4 Non-standard residues in protein, DNA, RNA chains ⓘ

There are no non-standard protein/DNA/RNA residues in this entry.

5.5 Carbohydrates ⓘ

There are no carbohydrates in this entry.

5.6 Ligand geometry ⓘ

18 ligands are modelled in this entry.

In the following table, the Counts columns list the number of bonds (or angles) for which Mogul statistics could be retrieved, the number of bonds (or angles) that are observed in the model and the number of bonds (or angles) that are defined in the chemical component dictionary. The Link column lists molecule types, if any, to which the group is linked. The Z score for a bond length (or angle) is the number of standard deviations the observed value is removed from the expected value. A bond length (or angle) with $|Z| > 2$ is considered an outlier worth inspection. RMSZ is the root-mean-square of all Z scores of the bond lengths (or angles).

Mol	Type	Chain	Res	Link	Bond lengths			Bond angles		
					Counts	RMSZ	$\# Z > 2$	Counts	RMSZ	$\# Z > 2$
4	GOL	A	1463	-	5,5,5	0.30	0	5,5,5	0.29	0
4	GOL	A	1464	-	5,5,5	0.29	0	5,5,5	0.54	0
4	GOL	A	1465	-	5,5,5	0.25	0	5,5,5	0.24	0
5	SO4	A	1466	-	4,4,4	0.42	0	6,6,6	0.24	0
6	PGE	A	1467	-	9,9,9	0.66	0	8,8,8	0.46	0
7	PEG	A	1468	-	6,6,6	0.50	0	5,5,5	0.36	0
6	PGE	A	1469	-	9,9,9	0.55	0	8,8,8	0.39	0
7	PEG	A	1470	-	6,6,6	0.52	0	5,5,5	0.56	0
7	PEG	A	1471	-	6,6,6	0.54	0	5,5,5	0.52	0
7	PEG	A	1472	-	6,6,6	0.57	0	5,5,5	0.33	0
2	FAD	A	998	-	58,58,58	1.35	9 (15%)	85,89,89	1.93	14 (16%)
3	FO1	A	999	-	28,28,28	1.83	3 (10%)	37,41,41	1.88	8 (21%)
4	GOL	B	1463	-	5,5,5	0.18	0	5,5,5	0.43	0
4	GOL	B	1464	-	5,5,5	0.26	0	5,5,5	1.26	1 (20%)
5	SO4	B	1465	-	4,4,4	0.50	0	6,6,6	0.18	0
5	SO4	B	1466	-	4,4,4	0.44	0	6,6,6	0.17	0
2	FAD	B	998	-	58,58,58	1.20	6 (10%)	85,89,89	1.80	13 (15%)
3	FO1	B	999	-	28,28,28	2.00	4 (14%)	37,41,41	2.35	9 (24%)

In the following table, the Chirals column lists the number of chiral outliers, the number of chiral centers analysed, the number of these observed in the model and the number defined in the chemical component dictionary. Similar counts are reported in the Torsion and Rings columns. '-' means no outliers of that kind were identified.

Mol	Type	Chain	Res	Link	Chirals	Torsions	Rings
4	GOL	A	1463	-	-	0/4/4/4	0/0/0/0
4	GOL	A	1464	-	-	0/4/4/4	0/0/0/0
4	GOL	A	1465	-	-	0/4/4/4	0/0/0/0
5	SO4	A	1466	-	-	0/0/0/0	0/0/0/0
6	PGE	A	1467	-	-	0/7/7/7	0/0/0/0
7	PEG	A	1468	-	-	0/4/4/4	0/0/0/0
6	PGE	A	1469	-	-	0/7/7/7	0/0/0/0
7	PEG	A	1470	-	-	0/4/4/4	0/0/0/0
7	PEG	A	1471	-	-	0/4/4/4	0/0/0/0

Continued on next page...

Continued from previous page...

Mol	Type	Chain	Res	Link	Chirals	Torsions	Rings
7	PEG	A	1472	-	-	0/4/4/4	0/0/0/0
2	FAD	A	998	-	-	0/34/50/50	0/6/6/6
3	FO1	A	999	-	-	0/14/14/14	0/3/3/3
4	GOL	B	1463	-	-	0/4/4/4	0/0/0/0
4	GOL	B	1464	-	-	0/4/4/4	0/0/0/0
5	SO4	B	1465	-	-	0/0/0/0	0/0/0/0
5	SO4	B	1466	-	-	0/0/0/0	0/0/0/0
2	FAD	B	998	-	-	0/34/50/50	0/6/6/6
3	FO1	B	999	-	-	0/14/14/14	0/3/3/3

All (22) bond length outliers are listed below:

Mol	Chain	Res	Type	Atoms	Z	Observed(Å)	Ideal(Å)
3	B	999	FO1	C3-C13	8.26	1.49	1.40
3	A	999	FO1	C3-C13	7.07	1.47	1.40
2	A	998	FAD	C4A-N9A	-4.25	1.31	1.37
3	A	999	FO1	O1-C1	4.06	1.27	1.21
2	A	998	FAD	O2-C2	3.98	1.27	1.21
3	B	999	FO1	C5-C12	3.71	1.48	1.42
3	A	999	FO1	C5-C12	3.61	1.48	1.42
2	B	998	FAD	C9A-C5X	3.05	1.48	1.42
2	A	998	FAD	C9A-C5X	3.03	1.48	1.42
2	B	998	FAD	C4A-N9A	-3.02	1.33	1.37
2	B	998	FAD	C4X-C10	3.02	1.46	1.41
3	B	999	FO1	O1-C1	3.00	1.25	1.21
2	A	998	FAD	C9A-N10	2.93	1.43	1.38
2	B	998	FAD	C5A-C4A	2.70	1.46	1.40
2	A	998	FAD	C8-C7	2.66	1.48	1.41
2	B	998	FAD	C8-C7	2.59	1.48	1.41
2	B	998	FAD	C9A-N10	2.53	1.42	1.38
2	A	998	FAD	C4X-C10	2.51	1.45	1.41
2	A	998	FAD	C5A-C4A	2.36	1.45	1.40
3	B	999	FO1	C2-C3	2.31	1.49	1.44
2	A	998	FAD	C4X-N5	2.18	1.37	1.33
2	A	998	FAD	C2A-N3A	2.13	1.35	1.32

All (45) bond angle outliers are listed below:

Mol	Chain	Res	Type	Atoms	Z	Observed(°)	Ideal(°)
2	A	998	FAD	C2-N1-C10	7.62	122.29	114.95
2	A	998	FAD	N3A-C2A-N1A	-7.61	122.20	128.89
3	B	999	FO1	C1-N1-C13	7.43	122.11	114.95

Continued on next page...

Continued from previous page...

Mol	Chain	Res	Type	Atoms	Z	Observed(°)	Ideal(°)
2	B	998	FAD	C5A-C4A-N3A	-7.00	119.15	125.98
2	B	998	FAD	N3A-C2A-N1A	-5.91	123.69	128.89
3	B	999	FO1	C15-C14-N3	5.72	120.43	112.60
2	B	998	FAD	N3A-C4A-N9A	5.62	135.03	125.39
2	A	998	FAD	C5A-C4A-N3A	-5.61	120.51	125.98
2	A	998	FAD	N3A-C4A-N9A	5.35	134.58	125.39
3	A	999	FO1	C15-C14-N3	5.16	119.66	112.60
3	A	999	FO1	C1-N1-C13	4.97	119.74	114.95
2	B	998	FAD	C2-N1-C10	4.70	119.47	114.95
3	A	999	FO1	C4-C3-C13	4.54	121.37	117.07
3	B	999	FO1	C4-C3-C13	4.50	121.33	117.07
3	B	999	FO1	C3-C2-N2	4.40	120.29	115.86
2	A	998	FAD	C1'-N10-C9A	4.09	122.97	118.67
2	B	998	FAD	C1'-N10-C9A	3.95	122.83	118.67
2	B	998	FAD	C4X-N5-C5X	3.80	121.11	116.68
2	A	998	FAD	C9A-N10-C10	-3.71	118.11	121.77
3	B	999	FO1	C3-C13-N1	-3.35	119.31	123.53
2	B	998	FAD	C4X-C10-N10	-3.27	118.55	120.53
2	A	998	FAD	C5X-C9A-N10	3.23	120.01	117.63
3	B	999	FO1	C12-N3-C13	-3.21	118.60	121.77
2	A	998	FAD	C8A-N9A-C4A	3.15	109.52	106.96
3	B	999	FO1	C3-C4-C5	-3.13	118.43	122.25
3	A	999	FO1	C3-C4-C5	-2.82	118.81	122.25
3	B	999	FO1	C14-N3-C12	2.63	121.43	118.67
3	A	999	FO1	O3-C15-C14	-2.55	103.79	109.88
3	B	999	FO1	C5-C12-N3	2.53	121.19	118.51
2	B	998	FAD	C4X-C10-N1	-2.51	119.46	123.00
2	B	998	FAD	C9A-N10-C10	-2.49	119.31	121.77
2	B	998	FAD	C2A-N3A-C4A	2.48	120.40	113.27
3	A	999	FO1	C3-C2-N2	2.46	118.34	115.86
3	A	999	FO1	C14-N3-C12	2.43	121.22	118.67
2	A	998	FAD	O3P-P-O5'	-2.42	96.51	102.91
2	B	998	FAD	C5X-C9A-N10	2.41	119.41	117.63
2	A	998	FAD	C2A-N3A-C4A	2.36	120.06	113.27
2	A	998	FAD	C4X-N5-C5X	2.35	119.42	116.68
2	B	998	FAD	O3P-P-O5'	-2.33	96.75	102.91
4	B	1464	GOL	O1-C1-C2	-2.20	100.57	110.37
2	A	998	FAD	C4X-C10-N1	-2.18	119.92	123.00
2	B	998	FAD	C2B-C1B-N9A	-2.18	107.41	113.35
3	A	999	FO1	C3-C13-N3	-2.16	119.05	122.28
2	A	998	FAD	O2P-P-O1P	2.02	123.31	112.14
2	A	998	FAD	C2A-N1A-C6A	2.00	122.32	118.76

There are no chirality outliers.

There are no torsion outliers.

There are no ring outliers.

5.7 Other polymers ⓘ

There are no such residues in this entry.

5.8 Polymer linkage issues

There are no chain breaks in this entry.

6 Fit of model and data ⓘ

6.1 Protein, DNA and RNA chains ⓘ

In the following table, the column labelled ‘#RSRZ> 2’ contains the number (and percentage) of RSRZ outliers, followed by percent RSRZ outliers for the chain as percentile scores relative to all X-ray entries and entries of similar resolution. The OWAB column contains the minimum, median, 95th percentile and maximum values of the occupancy-weighted average B-factor per residue. The column labelled ‘Q< 0.9’ lists the number of (and percentage) of residues with an average occupancy less than 0.9.

Mol	Chain	Analysed	<RSRZ>	#RSRZ>2	OWAB(Å ²)	Q<0.9
1	A	463/482 (96%)	-0.10	15 (3%) 45 46	17, 26, 45, 90	6 (1%)
1	B	438/482 (90%)	0.01	19 (4%) 34 34	18, 29, 53, 83	3 (0%)
All	All	901/964 (93%)	-0.05	34 (3%) 38 40	17, 28, 50, 90	9 (0%)

All (34) RSRZ outliers are listed below:

Mol	Chain	Res	Type	RSRZ
1	B	187	THR	7.0
1	A	195	GLY	6.5
1	A	189	GLU	6.4
1	A	190	LEU	6.2
1	B	220	ASN	6.1
1	B	188	PRO	5.1
1	B	186	VAL	4.9
1	B	219	LYS	4.6
1	A	187	THR	4.3
1	B	218	LEU	4.3
1	A	196	MET	3.6
1	B	-1	ARG	3.6
1	B	221	LYS	3.3
1	A	-3	VAL	2.9
1	B	14	GLY	2.9
1	A	218	LEU	2.9
1	B	18	ASP	2.9
1	A	215	ARG	2.8
1	B	108	TYR	2.7
1	A	-4	LEU	2.6
1	A	450	ARG	2.4
1	B	185	SER	2.4
1	B	109	ASN	2.4
1	B	-2	PRO	2.2

Continued on next page...

Continued from previous page...

Mol	Chain	Res	Type	RSRZ
1	B	-3	VAL	2.2
1	A	188	PRO	2.2
1	A	228	TRP	2.2
1	A	462	SER	2.1
1	B	66	ILE	2.1
1	B	154	GLN	2.1
1	B	158	TYR	2.1
1	A	274	GLY	2.1
1	B	87	LYS	2.1
1	A	18[A]	ASP	2.1

6.2 Non-standard residues in protein, DNA, RNA chains ⓘ

There are no non-standard protein/DNA/RNA residues in this entry.

6.3 Carbohydrates ⓘ

There are no carbohydrates in this entry.

6.4 Ligands ⓘ

In the following table, the Atoms column lists the number of modelled atoms in the group and the number defined in the chemical component dictionary. LLDF column lists the quality of electron density of the group with respect to its neighbouring residues in protein, DNA or RNA chains. The B-factors column lists the minimum, median, 95th percentile and maximum values of B factors of atoms in the group. The column labelled 'Q< 0.9' lists the number of atoms with occupancy less than 0.9.

Mol	Type	Chain	Res	Atoms	RSR	LLDF	B-factors(Å ²)	Q<0.9
7	PEG	A	1471	7/7	0.26	8.45	56,67,75,75	0
7	PEG	A	1472	7/7	0.24	7.79	60,63,68,68	0
4	GOL	B	1464	6/6	0.17	4.24	28,33,38,38	0
5	SO4	A	1466	5/5	0.16	4.20	44,56,59,61	0
6	PGE	A	1467	10/10	0.13	2.62	43,51,54,55	0
6	PGE	A	1469	10/10	0.22	2.60	47,52,55,57	0
5	SO4	B	1466	5/5	0.15	2.34	82,85,91,94	0
4	GOL	A	1463	6/6	0.15	2.30	39,43,43,48	0
7	PEG	A	1470	7/7	0.14	2.26	32,44,56,57	0
4	GOL	A	1464	6/6	0.14	1.37	30,35,36,38	0
7	PEG	A	1468	7/7	0.13	1.07	36,47,57,59	0

Continued on next page...

Continued from previous page...

Mol	Type	Chain	Res	Atoms	RSR	LLDF	B-factors(\AA^2)	Q<0.9
2	FAD	A	998	53/53	0.14	0.63	17,19,22,23	0
3	FO1	A	999	26/26	0.15	0.52	18,19,21,23	0
4	GOL	B	1463	6/6	0.12	0.48	32,40,42,43	0
5	SO4	B	1465	5/5	0.10	0.44	50,60,62,62	0
2	FAD	B	998	53/53	0.13	0.33	18,20,22,23	0
4	GOL	A	1465	6/6	0.12	-0.01	53,54,55,58	0
3	FO1	B	999	26/26	0.11	-0.03	19,22,25,26	0

6.5 Other polymers

There are no such residues in this entry.