



Full wwPDB X-ray Structure Validation Report ⓘ

Feb 28, 2014 – 03:56 AM GMT

PDB ID : 2CFD
Title : AGAO IN COMPLEX WITH WC4L3 (RU-WIRE INHIBITOR, 4-CARBON LINKER, LAMBDA ENANTIOMER, DATA SET 3)
Authors : Langley, D.B.; Duff, A.P.; Freeman, H.C.; Guss, J.M.; Juda, G.A.; Dooley, D.M.; Contakes, S.M.; Halpern-Manners, N.W.; Dunn, A.R.; Gray, H.B.
Deposited on : 2006-02-20
Resolution : 1.60 Å(reported)

This is a full wwPDB validation report for a publicly released PDB entry.
We welcome your comments at validation@mail.wwpdb.org
A user guide is available at <http://wwpdb.org/ValidationPDFNotes.html>

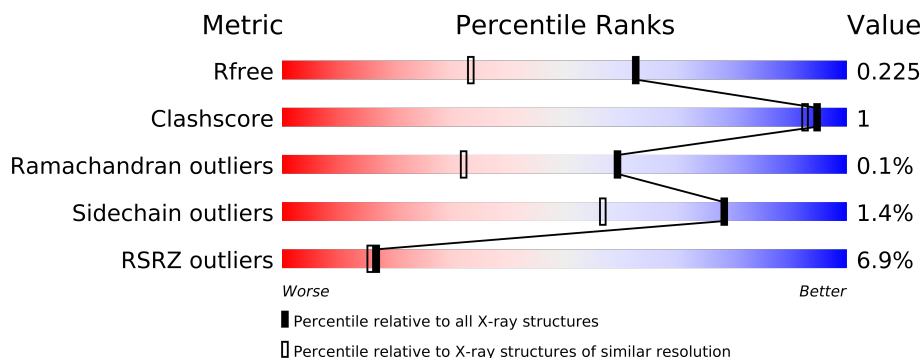
The following versions of software and data (see [references](#)) were used in the production of this report:

MolProbity : 4.02b-467
Mogul : 1.15 2013
Xtriage (Phenix) : dev-1323
EDS : stable22639
Percentile statistics : 21963
Refmac : 5.8.0049
CCP4 : 6.3.0 (Settle)
Ideal geometry (proteins) : Engh & Huber (2001)
Ideal geometry (DNA, RNA) : Parkinson et. al. (1996)
Validation Pipeline (wwPDB-VP) : stable22683

1 Overall quality at a glance

The reported resolution of this entry is 1.60 Å.

Percentile scores (ranging between 0-100) for global validation metrics of the entry are shown in the following graphic. The table shows the number of entries on which the scores are based.



Metric	Whole archive (#Entries)	Similar resolution (#Entries, resolution range(Å))
R_{free}	66092	1872 (1.60-1.60)
Clashscore	79885	2199 (1.60-1.60)
Ramachandran outliers	78287	2126 (1.60-1.60)
Sidechain outliers	78261	2125 (1.60-1.60)
RSRZ outliers	66119	1872 (1.60-1.60)

The table below summarises the geometric issues observed across the polymeric chains and their fit to the electron density. The red, orange, yellow and green segments on the lower bar indicate the fraction of residues that contain outliers for ≥ 3 , 2, 1 and 0 types of geometric quality criteria. The upper red bar (where present) indicates the fraction of residues that have poor fit to the electron density.

Mol	Chain	Length	Quality of chain
1	A	646	
1	B	646	

The following table lists non-polymeric compounds that are outliers for geometric or electron-density-fit criteria:

Mol	Type	Chain	Res	Geometry	Electron density
2	CU	A	701	-	X
3	NA	B	703	-	X
5	SO4	A	710	-	X
5	SO4	B	710	-	X
6	GOL	A	725	-	X
6	GOL	B	720	-	X

Continued on next page...

Continued from previous page...

Mol	Type	Chain	Res	Geometry	Electron density
6	GOL	B	723	-	X
6	GOL	B	725	-	X

2 Entry composition

There are 7 unique types of molecules in this entry. The entry contains 19634 atoms, of which 9073 are hydrogens and 0 are deuterium.

In the tables below, the ZeroOcc column contains the number of atoms modelled with zero occupancy, the AltConf column contains the number of residues with at least one atom in alternate conformation and the Trace column contains the number of residues modelled with at most 2 atoms.

- Molecule 1 is a protein called PHENYLETHYLAMINE OXIDASE.

Mol	Chain	Residues	Atoms						ZeroOcc	AltConf	Trace
1	A	619	Total	C	H	N	O	S	0	3	0
			9344	3077	4473	853	931	10			
1	B	619	Total	C	H	N	O	S	0	5	0
			9359	3081	4483	853	931	11			

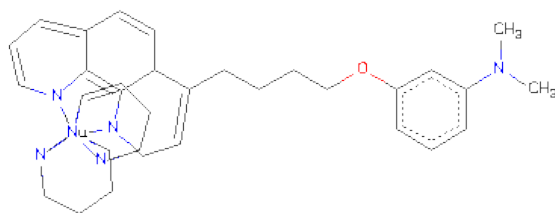
- Molecule 2 is COPPER (II) ION (three-letter code: CU) (formula: Cu).

Mol	Chain	Residues	Atoms		ZeroOcc	AltConf
2	B	1	Total	Cu	0	0
			1	1		
2	A	1	Total	Cu	0	0
			1	1		

- Molecule 3 is SODIUM ION (three-letter code: NA) (formula: Na).

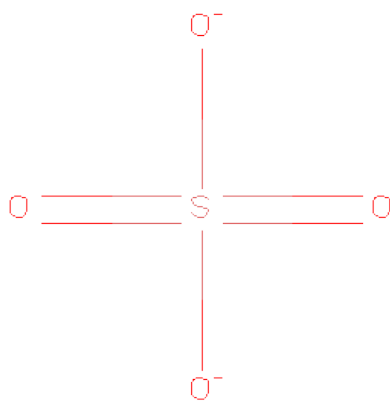
Mol	Chain	Residues	Atoms		ZeroOcc	AltConf
3	B	1	Total	Na	0	0
			1	1		
3	A	1	Total	Na	0	0
			1	1		

- Molecule 4 is BIS[1H,1'H-2,2'-BIPYRIDINATO(2-)-KAPPA 2 N 1 ,N 1']{3-[4-(1,10-DIHYDRO-1,10-PHENANTHROLIN-4-YL-KAPPA 2 N 1 ,N 10)BUTOXY]-N,N-DIMETHYLANILINATO(2-)}RUTHENIUM (three-letter code: R4A) (formula: C₄₄H₆₁N₇ORu).



Mol	Chain	Residues	Atoms						ZeroOcc	AltConf
4	A	1	Total	C	H	N	O	Ru	0	0
			94	44	41	7	1	1		
4	B	1	Total	C	H	N	O	Ru	0	0
			94	44	41	7	1	1		

- Molecule 5 is SULFATE ION (three-letter code: SO4) (formula: O₄S).



Mol	Chain	Residues	Atoms		ZeroOcc	AltConf
5	A	1	Total	O S	0	0
			5	4 1		
5	B	1	Total	O S	0	0
			5	4 1		

- Molecule 6 is GLYCEROL (three-letter code: GOL) (formula: $C_3H_8O_3$).



Mol	Chain	Residues	Atoms				ZeroOcc	AltConf
6	A	1	Total	C	H	O	0	0
			11	3	5	3		
6	A	1	Total	C	H	O	0	0
			11	3	5	3		
6	B	1	Total	C	H	O	0	0
			11	3	5	3		
6	B	1	Total	C	H	O	0	0
			11	3	5	3		
6	B	1	Total	C	H	O	0	0
			11	3	5	3		
6	B	1	Total	C	H	O	0	0
			11	3	5	3		

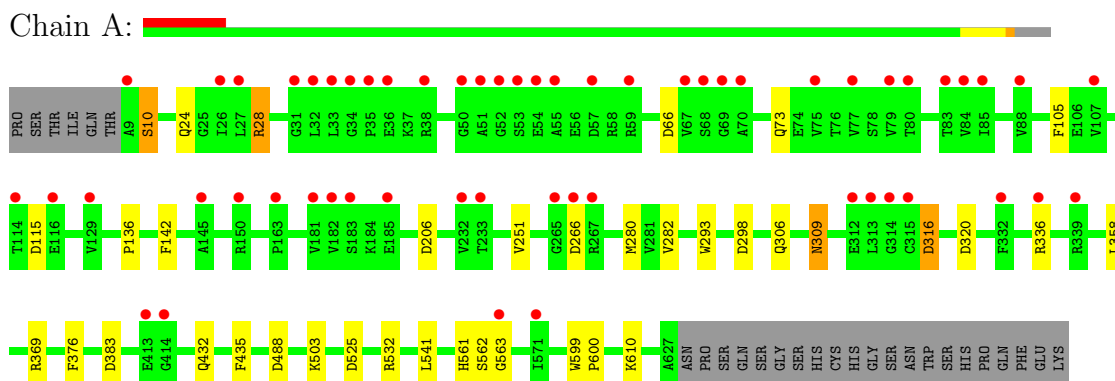
- Molecule 7 is water.

Mol	Chain	Residues	Atoms		ZeroOcc	AltConf
7	A	266	Total	O	0	0
			266	266		
7	B	386	Total	O	0	0
			386	386		

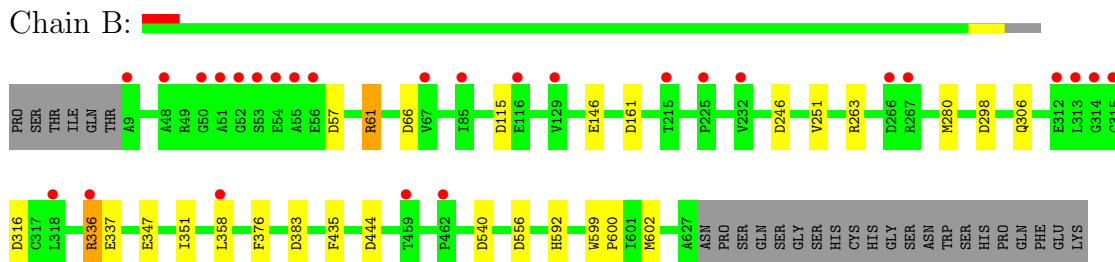
3 Residue-property plots

These plots are drawn for all protein, RNA and DNA chains in the entry. The first graphic for a chain summarises the proportions of errors displayed in the second graphic. The second graphic shows the sequence view annotated by issues in geometry and electron density. Residues are color-coded according to the number of geometric quality criteria for which they contain at least one outlier: green = 0, yellow = 1, orange = 2 and red = 3 or more. A red dot above a residue indicates a poor fit to the electron density ($RSRZ > 2$). Stretches of 2 or more consecutive residues without any outlier are shown as a green connector. Residues present in the sample, but not in the model, are shown in grey.

• Molecule 1: PHENYLETHYLAMINE OXIDASE



• Molecule 1: PHENYLETHYLAMINE OXIDASE



4 Data and refinement statistics

Property	Value	Source
Space group	C 1 2 1	Depositor
Cell constants a, b, c, α , β , γ	192.29Å 62.86Å 158.17Å 90.00° 117.47° 90.00°	Depositor
Resolution (Å)	29.99 – 1.60 29.99 – 1.60	Depositor EDS
% Data completeness (in resolution range)	93.9 (29.99-1.60) 93.9 (29.99-1.60)	Depositor EDS
R_{merge}	0.04	Depositor
R_{sym}	(Not available)	Depositor
$\langle I/\sigma(I) \rangle$ ¹	1.61 (at 1.60Å)	Xtriage
Refinement program	REFMAC 5.1.24	Depositor
R, R_{free}	0.194 , 0.213 0.206 , 0.225	Depositor DCC
R_{free} test set	10383 reflections (5.29%)	DCC
Wilson B-factor (Å ²)	21.7	Xtriage
Anisotropy	0.564	Xtriage
Bulk solvent k_{sol} (e/Å ³), B_{sol} (Å ²)	0.46 , 36.2	EDS
Estimated twinning fraction	No twinning to report.	Xtriage
L-test for twinning	$\langle L \rangle = 0.44$, $\langle L^2 \rangle = 0.26$	Xtriage
Outliers	0 of 206734 reflections	Xtriage
F_o, F_c correlation	0.95	EDS
Total number of atoms	19634	wwPDB-VP
Average B, all atoms (Å ²)	21.0	wwPDB-VP

Xtriage's analysis on translational NCS is as follows: *The analyses of the Patterson function reveals a significant off-origin peak that is 77.91 % of the origin peak, indicating pseudo translational symmetry. The chance of finding a peak of this or larger height randomly in a structure without pseudo translational symmetry is equal to 7.7218e-07. The detected translational NCS is most likely also responsible for the elevated intensity ratio.*

¹Intensities estimated from amplitudes.

5 Model quality

5.1 Standard geometry

Bond lengths and bond angles in the following residue types are not validated in this section: GOL, R4A, NA, SO4, TPQ, CU

The Z score for a bond length (or angle) is the number of standard deviations the observed value is removed from the expected value. A bond length (or angle) with $|Z| > 5$ is considered an outlier worth inspection. RMSZ is the root-mean-square of all Z scores of the bond lengths (or angles).

Mol	Chain	Bond lengths		Bond angles	
		RMSZ	# $ Z > 5$	RMSZ	# $ Z > 5$
1	A	0.51	0/4990	0.79	10/6793 (0.1%)
1	B	0.59	1/5006 (0.0%)	0.85	10/6815 (0.1%)
All	All	0.55	1/9996 (0.0%)	0.82	20/13608 (0.1%)

All (1) bond length outliers are listed below:

Mol	Chain	Res	Type	Atoms	Z	Observed(Å)	Ideal(Å)
1	B	347	GLU	CD-OE2	-5.40	1.19	1.25

All (20) bond angle outliers are listed below:

Mol	Chain	Res	Type	Atoms	Z	Observed(°)	Ideal(°)
1	B	61	ARG	NE-CZ-NH2	-8.72	115.94	120.30
1	B	298	ASP	CB-CG-OD2	7.33	124.89	118.30
1	A	383	ASP	CB-CG-OD2	6.42	124.08	118.30
1	A	66	ASP	CB-CG-OD2	6.20	123.88	118.30
1	B	540	ASP	CB-CG-OD2	6.11	123.80	118.30
1	B	316	ASP	CB-CG-OD2	5.74	123.46	118.30
1	A	298	ASP	CB-CG-OD2	5.62	123.36	118.30
1	B	115	ASP	CB-CG-OD2	5.60	123.34	118.30
1	A	488	ASP	CB-CG-OD2	5.60	123.34	118.30
1	A	206	ASP	CB-CG-OD2	5.52	123.27	118.30
1	A	525	ASP	CB-CG-OD2	5.51	123.26	118.30
1	A	320	ASP	CB-CG-OD2	5.46	123.21	118.30
1	B	161	ASP	CB-CG-OD2	5.42	123.17	118.30
1	B	57	ASP	CB-CG-OD2	5.39	123.15	118.30
1	B	383	ASP	CB-CG-OD2	5.36	123.12	118.30
1	A	266	ASP	CB-CG-OD2	5.34	123.11	118.30
1	A	115	ASP	CB-CG-OD2	5.13	122.91	118.30
1	B	246	ASP	CB-CG-OD2	5.05	122.85	118.30

Continued on next page...

Continued from previous page...

Mol	Chain	Res	Type	Atoms	Z	Observed(°)	Ideal(°)
1	B	66	ASP	CB-CG-OD2	5.05	122.84	118.30
1	A	316	ASP	CB-CG-OD2	5.00	122.80	118.30

There are no chirality outliers.

There are no planarity outliers.

5.2 Close contacts ⓘ

In the following table, the Non-H and H(model) columns list the number of non-hydrogen atoms and hydrogen atoms in the chain respectively. The H(added) column lists the number of hydrogens added by MolProbity. The Clashes column lists the number of clashes within the asymmetric unit, and the number in parentheses is this value normalized per 1000 atoms of the molecule in the chain. The Symm-Clashes column gives symmetry related clashes, in the same way as for the Clashes column.

Mol	Chain	Non-H	H(model)	H(added)	Clashes	Symm-Clashes
1	A	4871	4473	220	15	0
1	B	4876	4483	220	12	0
2	A	1	0	0	0	0
2	B	1	0	0	0	0
3	A	1	0	0	0	0
3	B	1	0	0	0	0
4	A	53	41	15	2	0
4	B	53	41	15	2	0
5	A	5	0	0	0	0
5	B	5	0	0	0	0
6	A	12	10	6	0	0
6	B	30	25	15	1	0
7	A	266	0	0	1	0
7	B	386	0	0	2	0
All	All	10561	9073	491	27	0

Clashscore is defined as the number of clashes calculated for the entry per 1000 atoms (including hydrogens) of the entry. The overall clashscore for this entry is 1.

All (27) close contacts within the same asymmetric unit are listed below.

Atom-1	Atom-2	Distance(Å)	Clash(Å)
1:B:336:ARG:NH2	4:B:705:R4A:HCD1	2.11	0.66
1:B:599:TRP:CD2	1:B:600:PRO:HA	2.32	0.64
1:A:599:TRP:CD2	1:A:600:PRO:HA	2.34	0.62
1:A:358:LEU:HA	4:B:705:R4A:HBD1	1.85	0.58

Continued on next page...

Continued from previous page...

Atom-1	Atom-2	Distance(Å)	Clash(Å)
1:B:61:ARG:HH22	1:B:556:ASP:CG	2.10	0.54
4:A:705:R4A:HBD1	1:B:358:LEU:HA	1.91	0.53
1:A:532:ARG:HB3	1:A:563:GLY:HA2	1.90	0.52
1:B:280[B]:MET:HG3	1:B:435:PHE:CE2	2.44	0.51
1:A:561:HIS:ND1	1:A:562:SER:O	2.39	0.50
1:B:61:ARG:NH2	1:B:556:ASP:OD2	2.41	0.50
1:B:556:ASP:OD1	7:B:2329:HOH:O	2.19	0.49
1:A:24:GLN:O	1:A:28:ARG:HG2	2.14	0.48
1:B:251:VAL:HG23	1:B:306:GLN:HB3	1.97	0.47
1:A:316:ASP:HA	1:B:351:ILE:HD13	1.97	0.47
1:B:251:VAL:CG2	1:B:306:GLN:HB3	2.45	0.47
6:B:726:GOL:H32	7:B:2224:HOH:O	2.16	0.46
1:A:610:LYS:NZ	7:A:2251:HOH:O	2.48	0.46
1:A:251:VAL:CG2	1:A:306:GLN:HB3	2.47	0.45
1:A:251:VAL:HG23	1:A:306:GLN:HB3	1.98	0.44
1:A:336:ARG:CZ	4:A:705:R4A:HCE	2.48	0.43
1:A:309:ASN:N	1:A:309:ASN:HD22	2.16	0.43
1:A:280[B]:MET:HG3	1:A:435:PHE:CE2	2.54	0.42
1:A:142:PHE:CZ	1:A:293:TRP:HA	2.55	0.42
1:A:282:VAL:HA	1:A:432:GLN:O	2.20	0.41
1:B:592:HIS:HE1	1:B:602[A]:MET:SD	2.43	0.41
1:A:105:PHE:HA	1:A:136:PRO:HG3	2.03	0.41
1:B:280[B]:MET:HG3	1:B:435:PHE:CD2	2.55	0.40

There are no symmetry-related clashes.

5.3 Torsion angles

5.3.1 Protein backbone ⓘ

In the following table, the Percentiles column shows the percent Ramachandran outliers of the chain as a percentile score with respect to all X-ray entries followed by that with respect to entries of similar resolution. The Analysed column shows the number of residues for which the backbone conformation was analysed, and the total number of residues.

Mol	Chain	Analysed	Favoured	Allowed	Outliers	Percentiles
1	A	619/646 (96%)	598 (97%)	20 (3%)	1 (0%)	56 29
1	B	621/646 (96%)	596 (96%)	25 (4%)	0	100 100
All	All	1240/1292 (96%)	1194 (96%)	45 (4%)	1 (0%)	59 32

All (1) Ramachandran outliers are listed below:

Mol	Chain	Res	Type
1	A	10	SER

5.3.2 Protein sidechains ⓘ

In the following table, the Percentiles column shows the percent sidechain outliers of the chain as a percentile score with respect to all X-ray entries followed by that with respect to entries of similar resolution. The Analysed column shows the number of residues for which the sidechain conformation was analysed, and the total number of residues.

Mol	Chain	Analysed	Rotameric	Outliers	Percentiles	
1	A	515/537 (96%)	507 (98%)	8 (2%)	75	50
1	B	517/537 (96%)	511 (99%)	6 (1%)	82	63
All	All	1032/1074 (96%)	1018 (99%)	14 (1%)	78	57

All (14) residues with a non-rotameric sidechain are listed below:

Mol	Chain	Res	Type
1	A	10	SER
1	A	28	ARG
1	A	73	GLN
1	A	309	ASN
1	A	369	ARG
1	A	376	PHE
1	A	503	LYS
1	A	541	LEU
1	B	146	GLU
1	B	263	ARG
1	B	336	ARG
1	B	337	GLU
1	B	376	PHE
1	B	444	ASP

Some sidechains can be flipped to improve hydrogen bonding and reduce clashes. All (2) such sidechains are listed below:

Mol	Chain	Res	Type
1	A	309	ASN
1	B	421	GLN

5.3.3 RNA ⓘ

There are no RNA chains in this entry.

5.4 Non-standard residues in protein, DNA, RNA chains ⓘ

2 non-standard protein/DNA/RNA residues are modelled in this entry.

In the following table, the Counts columns list the number of bonds (or angles) for which Mogul statistics could be retrieved, the number of bonds (or angles) that are observed in the model and the number of bonds (or angles) that are defined in the chemical component dictionary. The Link column lists molecule types, if any, to which the group is linked. The Z score for a bond length (or angle) is the number of standard deviations the observed value is removed from the expected value. A bond length (or angle) with $|Z| > 2$ is considered an outlier worth inspection. RMSZ is the root-mean-square of all Z scores of the bond lengths (or angles).

Mol	Type	Chain	Res	Link	Bond lengths			Bond angles		
					Counts	RMSZ	$\# Z > 2$	Counts	RMSZ	$\# Z > 2$
1	TPQ	A	382	1	14,14,15	4.59	4 (28%)	17,19,21	0.94	0
1	TPQ	B	382	1	14,14,15	4.46	4 (28%)	17,19,21	1.23	3 (17%)

In the following table, the Chirals column lists the number of chiral outliers, the number of chiral centers analysed, the number of these observed in the model and the number defined in the chemical component dictionary. Similar counts are reported in the Torsion and Rings columns. '-' means no outliers of that kind were identified.

Mol	Type	Chain	Res	Link	Chirals	Torsions	Rings
1	TPQ	A	382	1	-	0/4/22/24	0/1/1/1
1	TPQ	B	382	1	-	0/4/22/24	0/1/1/1

All (8) bond length outliers are listed below:

Mol	Chain	Res	Type	Atoms	Z	Observed(Å)	Ideal(Å)
1	A	382	TPQ	O-C	16.21	1.22	1.11
1	B	382	TPQ	O-C	15.67	1.22	1.11
1	B	382	TPQ	C3-C4	3.29	1.41	1.35
1	A	382	TPQ	O4-C4	-2.79	1.26	1.34
1	A	382	TPQ	CA-C	2.69	1.53	1.48
1	A	382	TPQ	C3-C4	2.47	1.39	1.35
1	B	382	TPQ	CA-C	2.47	1.52	1.48
1	B	382	TPQ	O4-C4	-2.40	1.27	1.34

All (3) bond angle outliers are listed below:

Mol	Chain	Res	Type	Atoms	Z	Observed(°)	Ideal(°)
1	B	382	TPQ	C6-C1-C2	2.93	121.51	118.24
1	B	382	TPQ	CB-C1-C6	-2.42	118.08	122.61
1	B	382	TPQ	O5-C5-C4	2.11	122.40	119.05

There are no chirality outliers.

There are no torsion outliers.

There are no ring outliers.

5.5 Carbohydrates ⓘ

There are no carbohydrates in this entry.

5.6 Ligand geometry ⓘ

Of 15 ligands modelled in this entry, 4 are monoatomic - leaving 11 for Mogul analysis.

In the following table, the Counts columns list the number of bonds (or angles) for which Mogul statistics could be retrieved, the number of bonds (or angles) that are observed in the model and the number of bonds (or angles) that are defined in the chemical component dictionary. The Link column lists molecule types, if any, to which the group is linked. The Z score for a bond length (or angle) is the number of standard deviations the observed value is removed from the expected value. A bond length (or angle) with $|Z| > 2$ is considered an outlier worth inspection. RMSZ is the root-mean-square of all Z scores of the bond lengths (or angles).

Mol	Type	Chain	Res	Link	Bond lengths			Bond angles		
					Counts	RMSZ	$\# Z > 2$	Counts	RMSZ	$\# Z > 2$
4	R4A	A	705	-	63,63,63	6.99	26 (41%)	72,101,101	3.00	39 (54%)
5	SO4	A	710	-	4,4,4	0.27	0	6,6,6	0.48	0
6	GOL	A	723	-	5,5,5	0.37	0	5,5,5	0.30	0
6	GOL	A	725	-	5,5,5	0.34	0	5,5,5	0.24	0
4	R4A	B	705	-	63,63,63	6.96	25 (39%)	72,101,101	3.02	40 (55%)
5	SO4	B	710	-	4,4,4	0.20	0	6,6,6	0.40	0
6	GOL	B	720	-	5,5,5	0.19	0	5,5,5	0.56	0
6	GOL	B	721	-	5,5,5	0.39	0	5,5,5	0.37	0
6	GOL	B	723	-	5,5,5	0.33	0	5,5,5	0.26	0
6	GOL	B	725	-	5,5,5	0.33	0	5,5,5	0.29	0
6	GOL	B	726	-	5,5,5	0.26	0	5,5,5	0.69	0

In the following table, the Chirals column lists the number of chiral outliers, the number of chiral centers analysed, the number of these observed in the model and the number defined in the chemical component dictionary. Similar counts are reported in the Torsion and Rings columns. '-' means

no outliers of that kind were identified.

Mol	Type	Chain	Res	Link	Chirals	Torsions	Rings
4	R4A	A	705	-	5/5/19/19	0/12/150/150	0/1/11/11
5	SO4	A	710	-	-	0/0/0/0	0/0/0/0
6	GOL	A	723	-	-	0/4/4/4	0/0/0/0
6	GOL	A	725	-	-	0/4/4/4	0/0/0/0
4	R4A	B	705	-	5/5/19/19	0/12/150/150	0/1/11/11
5	SO4	B	710	-	-	0/0/0/0	0/0/0/0
6	GOL	B	720	-	-	0/4/4/4	0/0/0/0
6	GOL	B	721	-	-	0/4/4/4	0/0/0/0
6	GOL	B	723	-	-	0/4/4/4	0/0/0/0
6	GOL	B	725	-	-	0/4/4/4	0/0/0/0
6	GOL	B	726	-	-	0/4/4/4	0/0/0/0

All (51) bond length outliers are listed below:

Mol	Chain	Res	Type	Atoms	Z	Observed(Å)	Ideal(Å)
4	B	705	R4A	CCB-NCA	-30.89	1.27	1.45
4	A	705	R4A	CCB-NCA	-30.06	1.27	1.45
4	B	705	R4A	CBB-NBA	-28.96	1.28	1.45
4	A	705	R4A	CBB-NBA	-28.75	1.28	1.45
4	A	705	R4A	CBK-NBL	-18.72	1.34	1.45
4	A	705	R4A	CCK-NCL	-18.02	1.35	1.45
4	B	705	R4A	CCK-NCL	-17.68	1.35	1.45
4	B	705	R4A	CBK-NBL	-16.93	1.35	1.45
4	B	705	R4A	CAN-NAA	-15.07	1.34	1.47
4	A	705	R4A	CAN-NAA	-15.03	1.34	1.47
4	A	705	R4A	CCK-CCJ	-7.53	1.40	1.51
4	B	705	R4A	CCK-CCJ	-7.41	1.40	1.51
4	B	705	R4A	CBD-CBE	-7.15	1.32	1.53
4	A	705	R4A	CCD-CCE	-7.09	1.32	1.53
4	B	705	R4A	CCD-CCE	-6.98	1.33	1.53
4	A	705	R4A	CBD-CBE	-6.82	1.33	1.53
4	A	705	R4A	CBH-CBG	-5.64	1.39	1.52
4	A	705	R4A	CAI-CAJ	5.21	1.41	1.33
4	B	705	R4A	CBH-CBG	-5.17	1.40	1.52
4	A	705	R4A	CCG-CCH	-5.12	1.39	1.50
4	B	705	R4A	CAI-CAJ	5.09	1.41	1.33
4	A	705	R4A	CAK-CAL	-5.03	1.48	1.54
4	B	705	R4A	CAK-CAL	-4.97	1.48	1.54
4	B	705	R4A	CCG-CCH	-4.94	1.40	1.50
4	B	705	R4A	CBI-CBH	-4.66	1.39	1.53
4	A	705	R4A	CBI-CBH	-4.66	1.39	1.53

Continued on next page...

Continued from previous page...

Mol	Chain	Res	Type	Atoms	Z	Observed(Å)	Ideal(Å)
4	B	705	R4A	CCC-CCB	-4.35	1.34	1.51
4	A	705	R4A	CCC-CCB	-4.25	1.34	1.51
4	A	705	R4A	CBC-CBB	-4.23	1.34	1.51
4	B	705	R4A	CBC-CBB	-4.10	1.35	1.51
4	A	705	R4A	CAK-CAB	-4.09	1.46	1.52
4	A	705	R4A	CCG-CCF	-3.62	1.50	1.55
4	B	705	R4A	CAK-CAB	-3.60	1.46	1.52
4	A	705	R4A	CAM-CAL	3.54	1.41	1.33
4	B	705	R4A	CCG-CCF	-3.44	1.50	1.55
4	B	705	R4A	CAK-CAJ	-3.44	1.40	1.52
4	B	705	R4A	CAM-CAL	3.21	1.40	1.33
4	A	705	R4A	CAK-CAJ	-3.20	1.41	1.52
4	A	705	R4A	CBI-CBJ	-2.70	1.39	1.51
4	B	705	R4A	CBJ-CBK	-2.70	1.40	1.51
4	A	705	R4A	CBJ-CBK	-2.70	1.40	1.51
4	B	705	R4A	CAC-CAH	2.67	1.46	1.41
4	A	705	R4A	CAC-CAH	2.63	1.46	1.41
4	B	705	R4A	CCH-CCI	2.63	1.39	1.32
4	B	705	R4A	CBI-CBJ	-2.55	1.40	1.51
4	A	705	R4A	CCH-CCI	2.51	1.39	1.32
4	B	705	R4A	CCJ-CCI	-2.50	1.40	1.48
4	A	705	R4A	CCJ-CCI	-2.45	1.40	1.48
4	A	705	R4A	CCE-CCF	-2.17	1.47	1.52
4	A	705	R4A	CAN-CAM	-2.05	1.40	1.48
4	B	705	R4A	CCE-CCF	-2.05	1.47	1.52

All (79) bond angle outliers are listed below:

Mol	Chain	Res	Type	Atoms	Z	Observed(°)	Ideal(°)
4	A	705	R4A	CCG-CCF-NCA	8.16	116.54	102.28
4	B	705	R4A	CCG-CCF-NCA	8.13	116.49	102.28
4	A	705	R4A	CCJ-CCK-NCL	7.60	119.59	110.37
4	B	705	R4A	CCJ-CCK-NCL	7.51	119.48	110.37
4	A	705	R4A	CCC-CCB-NCA	6.56	122.91	110.23
4	B	705	R4A	CBC-CBB-NBA	6.22	122.26	110.23
4	B	705	R4A	CCC-CCB-NCA	6.18	122.18	110.23
4	A	705	R4A	CBC-CBB-NBA	6.13	122.08	110.23
4	A	705	R4A	CCK-NCL-CCG	5.83	120.99	111.86
4	B	705	R4A	CCK-NCL-CCG	5.83	120.98	111.86
4	B	705	R4A	CCF-CCG-NCL	5.31	113.77	102.15
4	A	705	R4A	CCF-CCG-NCL	5.08	113.27	102.15
4	B	705	R4A	CBJ-CBK-NBL	5.06	120.02	110.23

Continued on next page...

Continued from previous page...

Mol	Chain	Res	Type	Atoms	Z	Observed(°)	Ideal(°)
4	A	705	R4A	CBJ-CBK-NBL	4.98	119.86	110.23
4	B	705	R4A	CCH-CCG-NCL	4.82	120.61	110.65
4	A	705	R4A	CCH-CCG-NCL	4.80	120.55	110.65
4	A	705	R4A	CAJ-CAK-CAL	4.54	127.11	112.87
4	B	705	R4A	CAJ-CAK-CAB	4.48	118.62	108.93
4	A	705	R4A	CAJ-CAK-CAB	4.42	118.47	108.93
4	B	705	R4A	CBI-CBJ-CBK	4.38	120.53	111.26
4	B	705	R4A	CAJ-CAK-CAL	4.28	126.30	112.87
4	A	705	R4A	CCE-CCF-CCG	4.11	123.61	116.61
4	A	705	R4A	CBI-CBJ-CBK	4.11	119.96	111.26
4	B	705	R4A	CBD-CBC-CBB	4.09	119.92	111.26
4	B	705	R4A	CCE-CCF-CCG	4.06	123.51	116.61
4	B	705	R4A	CAL-CAK-CAB	4.05	115.08	108.54
4	B	705	R4A	CAF-CAE-NAD	-4.02	119.95	122.72
4	A	705	R4A	CBD-CBC-CBB	3.99	119.71	111.26
4	A	705	R4A	CCD-CCC-CCB	3.93	119.58	111.26
4	A	705	R4A	CBJ-CBI-CBH	3.85	119.99	111.45
4	B	705	R4A	CCD-CCC-CCB	3.80	119.31	111.26
4	A	705	R4A	CAL-CAK-CAB	3.64	114.42	108.54
4	B	705	R4A	CBJ-CBI-CBH	3.60	119.45	111.45
4	A	705	R4A	CCD-CCE-CCF	3.58	119.22	110.53
4	A	705	R4A	CBI-CBH-CBG	3.55	119.15	110.53
4	B	705	R4A	CBI-CBH-CBG	3.50	119.04	110.53
4	A	705	R4A	CCF-CCG-CCH	3.39	126.18	115.10
4	B	705	R4A	CCB-NCA-CCF	3.24	123.26	112.75
4	B	705	R4A	CCF-CCG-CCH	3.22	125.63	115.10
4	A	705	R4A	CBB-NBA-CBF	3.16	123.00	112.75
4	B	705	R4A	CAC-CAB-CAK	-3.14	118.73	125.18
4	A	705	R4A	CAF-CAE-NAD	-3.07	120.60	122.72
4	B	705	R4A	CL4-OL5-CNA	3.03	125.66	117.94
4	B	705	R4A	CBD-CBE-CBF	3.01	117.86	110.53
4	A	705	R4A	CAC-CAB-CAK	-2.98	119.07	125.18
4	A	705	R4A	CBD-CBE-CBF	2.96	117.74	110.53
4	B	705	R4A	CCD-CCE-CCF	2.93	117.64	110.53
4	A	705	R4A	CCB-NCA-CCF	2.90	122.15	112.75
4	B	705	R4A	CBB-NBA-CBF	2.83	121.92	112.75
4	A	705	R4A	CAK-CAL-CAM	2.80	118.02	112.02
4	B	705	R4A	CCC-CCD-CCE	2.77	117.60	111.45
4	B	705	R4A	CCK-CCJ-CCI	2.69	120.44	112.02
4	A	705	R4A	CBC-CBD-CBE	2.69	117.41	111.45
4	B	705	R4A	CBE-CBF-NBA	2.67	120.88	111.07
4	A	705	R4A	CCK-CCJ-CCI	2.64	120.29	112.02

Continued on next page...

Continued from previous page...

Mol	Chain	Res	Type	Atoms	Z	Observed(°)	Ideal(°)
4	A	705	R4A	CBK-NBL-CBG	2.63	121.30	112.75
4	B	705	R4A	CBH-CBG-NBL	2.58	120.54	111.07
4	B	705	R4A	CBC-CBD-CBE	2.57	117.15	111.45
4	B	705	R4A	CAG-CAH-CAC	-2.48	116.00	118.71
4	B	705	R4A	CAK-CAL-CAM	2.45	117.27	112.02
4	A	705	R4A	CBE-CBF-NBA	2.45	120.06	111.07
4	B	705	R4A	CCE-CCF-NCA	2.43	119.99	111.07
4	A	705	R4A	CAG-CAH-CAC	-2.40	116.09	118.71
4	A	705	R4A	CCE-CCF-NCA	2.39	119.85	111.07
4	A	705	R4A	CBH-CBG-NBL	2.36	119.75	111.07
4	B	705	R4A	CBK-NBL-CBG	2.36	120.42	112.75
4	A	705	R4A	CCJ-CCI-CCH	-2.35	120.04	123.67
4	B	705	R4A	CAE-CAF-CAG	2.33	123.13	119.44
4	A	705	R4A	CAH-CAC-NAD	2.23	124.00	122.61
4	B	705	R4A	CCJ-CCI-CCH	-2.22	120.24	123.67
4	A	705	R4A	CAE-CAF-CAG	2.18	122.91	119.44
4	A	705	R4A	CCC-CCD-CCE	2.17	116.26	111.45
4	A	705	R4A	CAC-CAH-CAI	-2.12	118.49	123.34
4	A	705	R4A	CL4-OL5-CNA	2.12	123.33	117.94
4	B	705	R4A	CCG-CCH-CCI	-2.08	118.26	122.11
4	B	705	R4A	CAM-CAN-NAA	2.08	121.13	111.00
4	A	705	R4A	CAM-CAN-NAA	2.04	120.97	111.00
4	B	705	R4A	CAC-CAH-CAI	-2.04	118.68	123.34
4	B	705	R4A	CAN-NAA-CAB	-2.02	119.17	123.94

All (10) chirality outliers are listed below:

Mol	Chain	Res	Type	Atom
4	A	705	R4A	CAK
4	A	705	R4A	CBG
4	A	705	R4A	CCF
4	A	705	R4A	CBF
4	A	705	R4A	CCG
4	B	705	R4A	CAK
4	B	705	R4A	CBG
4	B	705	R4A	CCF
4	B	705	R4A	CBF
4	B	705	R4A	CCG

There are no torsion outliers.

There are no ring outliers.

5.7 Other polymers ⓘ

There are no such residues in this entry.

5.8 Polymer linkage issues

There are no chain breaks in this entry.

6 Fit of model and data ⓘ

6.1 Protein, DNA and RNA chains ⓘ

In the following table, the column labelled ‘#RSRZ> 2’ contains the number (and percentage) of RSRZ outliers, followed by percent RSRZ outliers for the chain as percentile scores relative to all X-ray entries and entries of similar resolution. The OWAB column contains the minimum, median, 95th percentile and maximum values of the occupancy-weighted average B-factor per residue. The column labelled ‘Q< 0.9’ lists the number of (and percentage) of residues with an average occupancy less than 0.9.

Mol	Chain	Analysed	<RSRZ>	#RSRZ>2	OWAB(Å ²)	Q<0.9
1	A	619/646 (95%)	0.46	57 (9%) 9 8	13, 21, 38, 49	0
1	B	619/646 (95%)	0.08	27 (4%) 33 32	10, 17, 27, 47	0
All	All	1238/1292 (95%)	0.27	84 (6%) 17 16	10, 19, 35, 49	0

All (84) RSRZ outliers are listed below:

Mol	Chain	Res	Type	RSRZ
1	B	53	SER	10.2
1	B	52	GLY	10.0
1	A	53	SER	8.5
1	A	54	GLU	7.5
1	A	67	VAL	7.0
1	A	55	ALA	6.7
1	A	51	ALA	6.6
1	B	55	ALA	6.2
1	B	54	GLU	5.8
1	B	51	ALA	5.7
1	A	35	PRO	5.5
1	A	68	SER	5.3
1	A	32	LEU	5.1
1	A	52	GLY	4.5
1	A	266	ASP	4.5
1	A	83	THR	4.3
1	A	9	ALA	4.2
1	A	314	GLY	4.2
1	B	313	LEU	4.1
1	A	79	VAL	4.1
1	A	50	GLY	4.1
1	A	84	VAL	4.1
1	A	85	ILE	4.0
1	A	315	CYS	4.0

Continued on next page...

Continued from previous page...

Mol	Chain	Res	Type	RSRZ
1	B	266	ASP	3.9
1	A	182	VAL	3.8
1	A	332	PHE	3.8
1	A	36	GLU	3.5
1	B	314	GLY	3.4
1	A	34	GLY	3.3
1	A	129	VAL	3.3
1	B	9	ALA	3.2
1	A	145	ALA	3.2
1	A	114	THR	3.2
1	A	116	GLU	3.1
1	B	462	PRO	3.1
1	B	315	CYS	3.1
1	A	31	GLY	3.0
1	B	358	LEU	3.0
1	A	77	VAL	2.9
1	A	267	ARG	2.9
1	A	313	LEU	2.9
1	B	312	GLU	2.9
1	B	67	VAL	2.8
1	A	563	GLY	2.8
1	A	69	GLY	2.7
1	B	50	GLY	2.7
1	A	107	VAL	2.6
1	A	571	ILE	2.6
1	A	183	SER	2.6
1	A	339	ARG	2.6
1	A	185	GLU	2.6
1	B	225	PRO	2.6
1	A	80	THR	2.6
1	A	233	THR	2.6
1	A	181	VAL	2.6
1	B	85	ILE	2.5
1	A	88	VAL	2.5
1	A	38	ARG	2.5
1	B	336	ARG	2.4
1	A	26	ILE	2.4
1	A	70	ALA	2.4
1	B	267	ARG	2.4
1	A	163	PRO	2.4
1	A	265	GLY	2.3
1	A	336	ARG	2.3

Continued on next page...

Continued from previous page...

Mol	Chain	Res	Type	RSRZ
1	B	215	THR	2.3
1	A	150	ARG	2.3
1	A	75	VAL	2.3
1	B	459	THR	2.3
1	A	414	GLY	2.3
1	A	33	LEU	2.2
1	A	413	GLU	2.2
1	B	48	ALA	2.2
1	B	56	GLU	2.2
1	B	232	VAL	2.2
1	A	27	LEU	2.2
1	B	129	VAL	2.1
1	A	59	ARG	2.1
1	B	116	GLU	2.1
1	A	57	ASP	2.0
1	A	232	VAL	2.0
1	A	312	GLU	2.0
1	B	318	LEU	2.0

6.2 Non-standard residues in protein, DNA, RNA chains ⓘ

In the following table, the Atoms column lists the number of modelled atoms in the group and the number defined in the chemical component dictionary. LLDF column lists the quality of electron density of the group with respect to its neighbouring residues in protein, DNA or RNA chains. The B-factors column lists the minimum, median, 95th percentile and maximum values of B factors of atoms in the group. The column labelled 'Q< 0.9' lists the number of atoms with occupancy less than 0.9.

Mol	Type	Chain	Res	Atoms	RSR	LLDF	B-factors(Å ²)	Q<0.9
1	TPQ	B	382	14/15	0.11	0.75	13,17,21,27	0
1	TPQ	A	382	14/15	0.09	-0.68	18,19,23,27	0

6.3 Carbohydrates ⓘ

There are no carbohydrates in this entry.

6.4 Ligands ⓘ

In the following table, the Atoms column lists the number of modelled atoms in the group and the number defined in the chemical component dictionary. LLDF column lists the quality of electron density of the group with respect to its neighbouring residues in protein, DNA or RNA chains.

The B-factors column lists the minimum, median, 95th percentile and maximum values of B factors of atoms in the group. The column labelled 'Q< 0.9' lists the number of atoms with occupancy less than 0.9.

Mol	Type	Chain	Res	Atoms	RSR	LLDF	B-factors(Å ²)	Q<0.9
6	GOL	B	725	6/6	0.19	7.55	47,48,48,49	0
2	CU	A	701	1/1	0.16	5.64	28,28,28,28	0
6	GOL	A	725	6/6	0.14	4.37	43,44,45,45	0
6	GOL	B	723	6/6	0.27	3.60	52,55,55,57	0
5	SO4	A	710	5/5	0.19	3.27	54,55,57,58	0
5	SO4	B	710	5/5	0.18	3.09	64,64,65,66	0
6	GOL	B	720	6/6	0.13	2.47	25,28,28,29	0
3	NA	B	703	1/1	0.17	2.02	22,22,22,22	0
6	GOL	B	721	6/6	0.11	1.76	37,40,41,44	0
2	CU	B	701	1/1	0.14	1.35	23,23,23,23	0
6	GOL	A	723	6/6	0.19	1.30	48,51,51,51	0
4	R4A	B	705	53/53	0.16	1.28	29,33,36,37	71
3	NA	A	703	1/1	0.15	0.93	28,28,28,28	0
4	R4A	A	705	53/53	0.15	0.84	34,37,41,41	71
6	GOL	B	726	6/6	0.12	0.82	37,41,42,43	0

6.5 Other polymers ⓘ

There are no such residues in this entry.