



Full wwPDB X-ray Structure Validation Report ⓘ

Feb 28, 2014 – 09:17 AM GMT

PDB ID : 3CFR
Title : Structure of the replicating complex of a POL Alpha family DNA Polymerase, ternary complex 2
Authors : Wang, J.; Klimenko, D.; Wang, M.; Steitz, T.A.; Konigsberg, W.H.
Deposited on : 2008-03-04
Resolution : 2.40 Å(reported)

This is a full wwPDB validation report for a publicly released PDB entry.
We welcome your comments at validation@mail.wwpdb.org
A user guide is available at <http://wwpdb.org/ValidationPDFNotes.html>

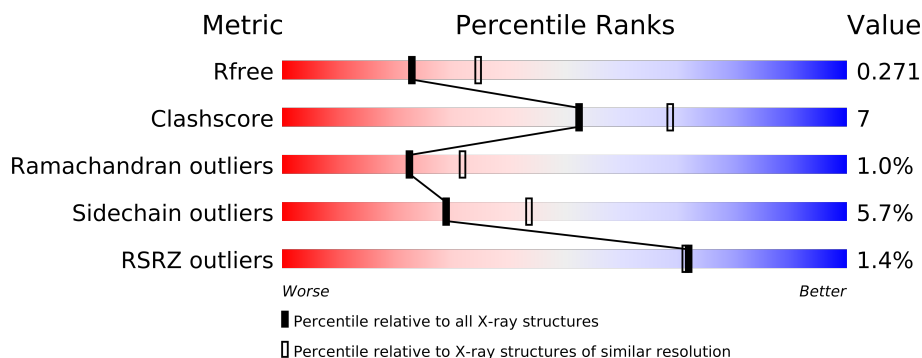
The following versions of software and data (see [references](#)) were used in the production of this report:

MolProbity : 4.02b-467
Mogul : 1.15 2013
Xtriage (Phenix) : dev-1323
EDS : stable22639
Percentile statistics : 21963
Refmac : 5.8.0049
CCP4 : 6.3.0 (Settle)
Ideal geometry (proteins) : Engh & Huber (2001)
Ideal geometry (DNA, RNA) : Parkinson et. al. (1996)
Validation Pipeline (wwPDB-VP) : stable22683

1 Overall quality at a glance

The reported resolution of this entry is 2.40 Å.

Percentile scores (ranging between 0-100) for global validation metrics of the entry are shown in the following graphic. The table shows the number of entries on which the scores are based.



Metric	Whole archive (#Entries)	Similar resolution (#Entries, resolution range(Å))
R_{free}	66092	2207 (2.40-2.40)
Clashscore	79885	2789 (2.40-2.40)
Ramachandran outliers	78287	2736 (2.40-2.40)
Sidechain outliers	78261	2737 (2.40-2.40)
RSRZ outliers	66119	2210 (2.40-2.40)

The table below summarises the geometric issues observed across the polymeric chains and their fit to the electron density. The red, orange, yellow and green segments on the lower bar indicate the fraction of residues that contain outliers for ≥ 3 , 2, 1 and 0 types of geometric quality criteria. The upper red bar (where present) indicates the fraction of residues that have poor fit to the electron density.

Mol	Chain	Length	Quality of chain
1	T	18	
2	P	13	
3	A	909	

2 Entry composition

There are 7 unique types of molecules in this entry. The entry contains 8636 atoms, of which 0 are hydrogen and 0 are deuterium.

In the tables below, the ZeroOcc column contains the number of atoms modelled with zero occupancy, the AltConf column contains the number of residues with at least one atom in alternate conformation and the Trace column contains the number of residues modelled with at most 2 atoms.

- Molecule 1 is a DNA chain called DNA (5'-D(*DTP*DCP*DAP*DAP*DGP*DTP*DAP*DAP*DGP*DCP*DAP*DGP*DTP*DCP*DCP*DGP*DCP*DG)-3').

Mol	Chain	Residues	Atoms					ZeroOcc	AltConf	Trace
1	T	18	Total	C	N	O	P	0	0	0
			367	175	71	104	17			

- Molecule 2 is a DNA chain called DNA (5'-D(*DGP*DCP*DGP*DGP*DAP*DCP*DTP*DGP*DCP*DTP*DTP*DAP*(DOC))-3').

Mol	Chain	Residues	Atoms					ZeroOcc	AltConf	Trace
2	P	13	Total	C	N	O	P	0	0	0
			262	126	48	76	12			

- Molecule 3 is a protein called DNA polymerase.

Mol	Chain	Residues	Atoms					ZeroOcc	AltConf	Trace
3	A	901	Total	C	N	O	S	0	0	0
			7343	4714	1224	1372	33			

There are 9 discrepancies between the modelled and reference sequences:

Chain	Residue	Modelled	Actual	Comment	Reference
A	561	ALA	LEU	ENGINEERED	UNP Q38087
A	565	GLY	SER	ENGINEERED	UNP Q38087
A	567	ALA	TYR	ENGINEERED	UNP Q38087
A	904	HIS	-	EXPRESSION TAG	UNP Q38087
A	905	HIS	-	EXPRESSION TAG	UNP Q38087
A	906	HIS	-	EXPRESSION TAG	UNP Q38087
A	907	HIS	-	EXPRESSION TAG	UNP Q38087
A	908	HIS	-	EXPRESSION TAG	UNP Q38087
A	909	HIS	-	EXPRESSION TAG	UNP Q38087

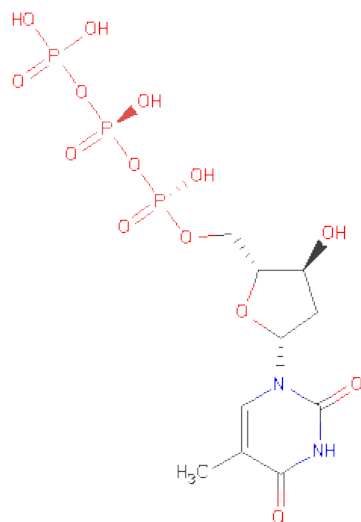
- Molecule 4 is CALCIUM ION (three-letter code: CA) (formula: Ca).

Mol	Chain	Residues	Atoms		ZeroOcc	AltConf
4	A	5	Total	Ca	0	0
			5	5		

- Molecule 5 is CHLORIDE ION (three-letter code: CL) (formula: Cl).

Mol	Chain	Residues	Atoms		ZeroOcc	AltConf
5	A	1	Total	Cl	0	0
			1	1		

- Molecule 6 is THYMIDINE-5'-TRIPHOSPHATE (three-letter code: TTP) (formula: C₁₀H₁₇N₂O₁₄P₃).



Mol	Chain	Residues	Atoms				ZeroOcc	AltConf
6	A	1	Total	C	N	O	P	
			29	10	2	14	3	0

- Molecule 7 is water.

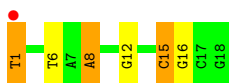
Mol	Chain	Residues	Atoms		ZeroOcc	AltConf
7	A	583	Total	O	0	0
			583	583		
7	P	16	Total	O	0	0
			16	16		
7	T	30	Total	O	0	0
			30	30		

3 Residue-property plots

These plots are drawn for all protein, RNA and DNA chains in the entry. The first graphic for a chain summarises the proportions of errors displayed in the second graphic. The second graphic shows the sequence view annotated by issues in geometry and electron density. Residues are color-coded according to the number of geometric quality criteria for which they contain at least one outlier: green = 0, yellow = 1, orange = 2 and red = 3 or more. A red dot above a residue indicates a poor fit to the electron density ($RSRZ > 2$). Stretches of 2 or more consecutive residues without any outlier are shown as a green connector. Residues present in the sample, but not in the model, are shown in grey.

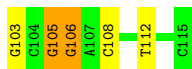
- Molecule 1: DNA (5'-D(*DTP*DCP*DAP*DAP*DGP*DTP*DAP*DAP*DGP*DCP*DAP*DCP*DTP*DCP*DCP*DGP*DCP*DG)-3')

Chain T: 



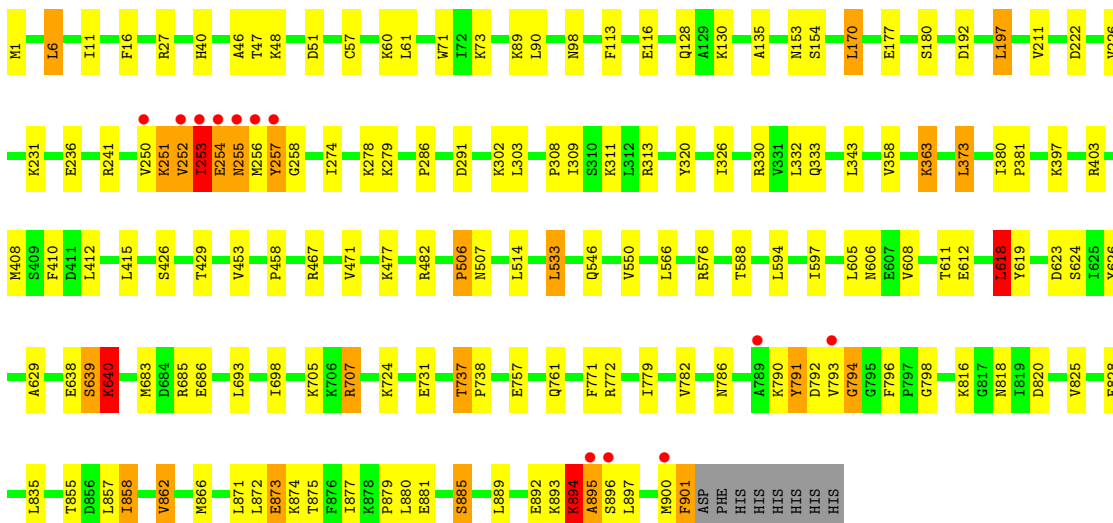
- Molecule 2: DNA (5'-D(*DGP*DCP*DGP*DGP*DAP*DCP*DTP*DGP*DCP*DTP*DTP*DAP*(DOC))-3')

Chain P: 



- Molecule 3: DNA polymerase

Chain A: 



4 Data and refinement statistics

Property	Value	Source
Space group	P 21 21 21	Depositor
Cell constants a, b, c, α , β , γ	74.96Å 119.77Å 130.43Å 90.00° 90.00° 90.00°	Depositor
Resolution (Å)	50.00 – 2.40 65.22 – 2.40	Depositor EDS
% Data completeness (in resolution range)	99.6 (50.00-2.40) 99.6 (65.22-2.40)	Depositor EDS
R_{merge}	0.19	Depositor
R_{sym}	(Not available)	Depositor
$\langle I/\sigma(I) \rangle$ ¹	1.38 (at 2.40Å)	Xtriage
Refinement program	REFMAC 5.1.19	Depositor
R, R_{free}	0.192 , 0.266 0.202 , 0.271	Depositor DCC
R_{free} test set	2340 reflections (5.33%)	DCC
Wilson B-factor (Å ²)	34.3	Xtriage
Anisotropy	0.391	Xtriage
Bulk solvent k_{sol} (e/Å ³), B_{sol} (Å ²)	0.33 , 19.7	EDS
Estimated twinning fraction	No twinning to report.	Xtriage
L-test for twinning	$\langle L \rangle = 0.49$, $\langle L^2 \rangle = 0.33$	Xtriage
Outliers	2 of 46247 reflections (0.004%)	Xtriage
F_o, F_c correlation	0.94	EDS
Total number of atoms	8636	wwPDB-VP
Average B, all atoms (Å ²)	30.0	wwPDB-VP

Xtriage's analysis on translational NCS is as follows: *The largest off-origin peak in the Patterson function is 3.61% of the height of the origin peak. No significant pseudotranslation is detected.*

¹Intensities estimated from amplitudes.

5 Model quality i

5.1 Standard geometry i

Bond lengths and bond angles in the following residue types are not validated in this section: DOC, CA, TTP, CL

The Z score for a bond length (or angle) is the number of standard deviations the observed value is removed from the expected value. A bond length (or angle) with $|Z| > 5$ is considered an outlier worth inspection. RMSZ is the root-mean-square of all Z scores of the bond lengths (or angles).

Mol	Chain	Bond lengths		Bond angles	
		RMSZ	$\# Z > 5$	RMSZ	$\# Z > 5$
1	T	0.72	0/412	1.63	9/634 (1.4%)
2	P	0.73	0/273	1.54	6/420 (1.4%)
3	A	0.43	0/7522	0.62	4/10164 (0.0%)
All	All	0.47	0/8207	0.77	19/11218 (0.2%)

Chiral center outliers are detected by calculating the chiral volume of a chiral center and verifying if the center is modelled as a planar moiety or with the opposite hand. A planarity outlier is detected by checking planarity of atoms in a peptide group, atoms in a mainchain group or atoms of a sidechain that are expected to be planar.

Mol	Chain	#Chirality outliers	#Planarity outliers
3	A	0	2

There are no bond length outliers.

All (19) bond angle outliers are listed below:

Mol	Chain	Res	Type	Atoms	Z	Observed(°)	Ideal(°)
1	T	1	DT	O4'-C1'-N1	10.77	115.54	108.00
1	T	8	DA	O4'-C1'-N9	10.73	115.52	108.00
1	T	1	DT	C1'-O4'-C4'	-9.13	100.97	110.10
2	P	103	DG	O4'-C1'-N9	8.51	113.96	108.00
2	P	105	DG	P-O3'-C3'	8.24	129.59	119.70
3	A	197	LEU	CA-CB-CG	7.68	132.97	115.30
1	T	1	DT	P-O3'-C3'	7.01	128.11	119.70
3	A	618	LEU	CA-CB-CG	6.97	131.33	115.30
3	A	791	TYR	N-CA-C	6.48	128.49	111.00
2	P	108	DC	O4'-C1'-N1	6.38	112.47	108.00
2	P	108	DC	C1'-O4'-C4'	-5.58	104.52	110.10
1	T	1	DT	C4-C5-C7	5.48	122.29	119.00
2	P	112	DT	O4'-C1'-N1	5.26	111.68	108.00

Continued on next page...

Continued from previous page...

Mol	Chain	Res	Type	Atoms	Z	Observed(°)	Ideal(°)
2	P	106	DG	C3'-C2'-C1'	-5.23	96.23	102.50
1	T	15	DC	C1'-O4'-C4'	-5.22	104.88	110.10
1	T	6	DT	C6-C5-C7	-5.22	119.77	122.90
1	T	15	DC	O4'-C1'-N1	5.11	111.58	108.00
1	T	15	DC	P-O3'-C3'	5.06	125.77	119.70
3	A	707	ARG	NE-CZ-NH2	-5.05	117.78	120.30

There are no chirality outliers.

All (2) planarity outliers are listed below:

Mol	Chain	Res	Type	Group
3	A	506	PRO	Peptide
3	A	792	ASP	Peptide

5.2 Close contacts ⓘ

In the following table, the Non-H and H(model) columns list the number of non-hydrogen atoms and hydrogen atoms in the chain respectively. The H(added) column lists the number of hydrogens added by MolProbity. The Clashes column lists the number of clashes within the asymmetric unit, and the number in parentheses is this value normalized per 1000 atoms of the molecule in the chain. The Symm-Clashes column gives symmetry related clashes, in the same way as for the Clashes column.

Mol	Chain	Non-H	H(model)	H(added)	Clashes	Symm-Clashes
1	T	367	0	203	5	0
2	P	262	0	148	2	0
3	A	7343	0	7236	108	0
4	A	5	0	0	0	0
5	A	1	0	0	0	0
6	A	29	0	13	0	0
7	A	583	0	0	16	0
7	P	16	0	0	0	0
7	T	30	0	0	0	0
All	All	8636	0	7600	111	0

Clashscore is defined as the number of clashes calculated for the entry per 1000 atoms (including hydrogens) of the entry. The overall clashscore for this entry is 7.

All (111) close contacts within the same asymmetric unit are listed below.

Atom-1	Atom-2	Distance(Å)	Clash(Å)
3:A:639:SER:HB2	3:A:640:LYS:HB2	1.16	1.09

Continued on next page...

Continued from previous page...

Atom-1	Atom-2	Distance(Å)	Clash(Å)
3:A:895:ALA:HB3	3:A:896:SER:HA	1.29	1.08
3:A:895:ALA:CB	3:A:896:SER:HA	1.80	1.05
3:A:254:GLU:CB	3:A:255:ASN:HA	1.90	1.01
3:A:254:GLU:HB3	3:A:255:ASN:HA	1.03	1.01
3:A:639:SER:CB	3:A:640:LYS:HB2	1.95	0.95
3:A:254:GLU:HB3	3:A:255:ASN:CA	1.94	0.95
3:A:506:PRO:HA	3:A:507:ASN:HB2	1.53	0.88
1:T:1:DT:H3	3:A:786:ASN:ND2	1.84	0.75
3:A:257:TYR:HD2	3:A:257:TYR:N	1.86	0.73
3:A:170:LEU:HA	3:A:177:GLU:HG3	1.72	0.72
3:A:291:ASP:HB2	7:A:1191:HOH:O	1.88	0.72
3:A:896:SER:N	3:A:897:LEU:HA	2.04	0.72
3:A:257:TYR:CD2	3:A:257:TYR:N	2.59	0.69
3:A:900:MET:HA	3:A:901:PHE:C	2.15	0.67
3:A:222:ASP:O	3:A:226:VAL:HG12	1.95	0.66
3:A:252:VAL:H	3:A:253:ILE:HG22	1.60	0.66
3:A:825:VAL:HB	3:A:828:GLU:HG3	1.78	0.65
3:A:477:LYS:HD3	7:A:1382:HOH:O	1.96	0.65
3:A:313:ARG:NH1	7:A:1132:HOH:O	2.13	0.64
3:A:250:VAL:HA	3:A:251:LYS:HB2	1.79	0.64
3:A:330:ARG:HH11	3:A:333:GLN:HE22	1.43	0.63
3:A:857:LEU:O	3:A:858:ILE:HG12	1.99	0.62
3:A:685:ARG:HD3	7:A:1403:HOH:O	2.00	0.62
3:A:252:VAL:N	3:A:253:ILE:HG22	2.15	0.61
3:A:892:GLU:O	3:A:894:LYS:HB3	2.01	0.61
3:A:794:GLY:H	3:A:796:PHE:H	1.50	0.59
3:A:274:ILE:HG12	3:A:278:LYS:HE3	1.85	0.58
3:A:415:LEU:HD22	3:A:623:ASP:HB3	1.86	0.58
3:A:873:GLU:HA	3:A:877:ILE:HB	1.86	0.57
3:A:896:SER:H	3:A:897:LEU:HA	1.68	0.57
3:A:791:TYR:O	3:A:798:GLY:N	2.20	0.57
3:A:618:LEU:HD13	3:A:626:TYR:O	2.06	0.56
1:T:1:DT:H3	3:A:786:ASN:HD21	1.51	0.56
3:A:731:GLU:HG3	3:A:879:PRO:HB3	1.88	0.56
3:A:546:GLN:O	3:A:550:VAL:HG23	2.07	0.55
3:A:40:HIS:HE1	3:A:51:ASP:OD2	1.89	0.55
3:A:639:SER:CA	3:A:640:LYS:HB2	2.37	0.54
3:A:893:LYS:HA	3:A:894:LYS:CB	2.38	0.54
3:A:241:ARG:NH2	7:A:1193:HOH:O	2.41	0.54
3:A:47:THR:HG21	3:A:57:CYS:O	2.08	0.53
3:A:790:LYS:O	3:A:790:LYS:HG2	2.09	0.53
3:A:373:LEU:HD23	3:A:380:ILE:HG22	1.91	0.53

Continued on next page...

Continued from previous page...

Atom-1	Atom-2	Distance(Å)	Clash(Å)
3:A:737:THR:HG22	7:A:1122:HOH:O	2.08	0.52
1:T:15:DC:H2"	1:T:16:DG:C8	2.44	0.52
3:A:90:LEU:HD11	3:A:363:LYS:HE2	1.90	0.51
3:A:286:PRO:HB3	3:A:782:VAL:HG21	1.92	0.51
3:A:412:LEU:HD13	3:A:415:LEU:HD13	1.93	0.51
3:A:858:ILE:O	3:A:862:VAL:HG13	2.11	0.51
3:A:308:PRO:HG2	3:A:311:LYS:HG3	1.94	0.50
3:A:330:ARG:HH11	3:A:333:GLN:NE2	2.11	0.49
3:A:893:LYS:HA	3:A:894:LYS:CG	2.43	0.49
3:A:1:MET:HA	7:A:1192:HOH:O	2.13	0.49
3:A:251:LYS:HA	3:A:252:VAL:O	2.13	0.48
3:A:255:ASN:H	3:A:255:ASN:ND2	2.11	0.48
3:A:60:LYS:HD2	3:A:71:TRP:CZ2	2.49	0.48
3:A:255:ASN:ND2	3:A:256:MET:H	2.11	0.48
3:A:116:GLU:HB2	3:A:135:ALA:HB3	1.96	0.48
1:T:8:DA:H5"	3:A:705:LYS:HD3	1.94	0.48
2:P:105:DG:H2"	2:P:106:DG:H8	1.79	0.48
3:A:250:VAL:CA	3:A:251:LYS:HB2	2.42	0.47
3:A:895:ALA:CB	3:A:896:SER:CA	2.70	0.47
3:A:330:ARG:NH1	3:A:333:GLN:HE22	2.12	0.47
3:A:779:ILE:HB	3:A:871:LEU:HD21	1.95	0.47
3:A:707:ARG:HH22	3:A:731:GLU:CD	2.19	0.46
3:A:426:SER:HB3	3:A:429:THR:OG1	2.14	0.46
3:A:771:PHE:CE1	3:A:872:LEU:HD22	2.50	0.46
3:A:467:ARG:HG3	7:A:1445:HOH:O	2.15	0.46
3:A:153:ASN:HB2	3:A:192:ASP:O	2.16	0.46
3:A:724:LYS:HD3	7:A:1295:HOH:O	2.15	0.46
3:A:640:LYS:HD2	7:A:1296:HOH:O	2.15	0.45
3:A:458:PRO:HG2	3:A:588:THR:HG22	1.97	0.45
3:A:900:MET:CA	3:A:901:PHE:C	2.82	0.45
3:A:471:VAL:HG13	3:A:566:LEU:HD21	1.98	0.45
3:A:130:LYS:HB3	7:A:1453:HOH:O	2.16	0.45
3:A:514:LEU:HD13	3:A:533:LEU:HD21	1.98	0.45
3:A:597:ILE:HD12	3:A:597:ILE:HA	1.92	0.45
3:A:605:LEU:HA	3:A:608:VAL:HG12	2.00	0.44
3:A:862:VAL:O	3:A:866:MET:HG3	2.17	0.44
1:T:12:DG:OP1	3:A:874:LYS:HE3	2.18	0.44
3:A:231:LYS:HG3	3:A:236:GLU:HA	2.00	0.44
3:A:881:GLU:O	3:A:885:SER:HB3	2.18	0.43
3:A:410:PHE:HB3	3:A:683:MET:HG2	2.01	0.43
3:A:731:GLU:CG	3:A:879:PRO:HB3	2.47	0.43
3:A:793:VAL:O	3:A:796:PHE:O	2.37	0.43

Continued on next page...

Continued from previous page...

Atom-1	Atom-2	Distance(Å)	Clash(Å)
3:A:772:ARG:HG3	7:A:1340:HOH:O	2.19	0.43
3:A:397:LYS:HD3	3:A:619:TYR:HA	2.00	0.43
3:A:738:PRO:HB3	3:A:779:ILE:HA	2.00	0.42
3:A:415:LEU:HD22	3:A:623:ASP:CB	2.48	0.42
3:A:256:MET:HA	3:A:257:TYR:HA	1.76	0.42
3:A:698:ILE:HG21	3:A:889:LEU:HD11	2.01	0.42
3:A:606:ASN:OD1	3:A:611:THR:HG23	2.18	0.42
3:A:381:PRO:O	3:A:576:ARG:HD3	2.19	0.42
3:A:255:ASN:HD22	3:A:256:MET:N	2.17	0.42
3:A:408:MET:HE2	3:A:629:ALA:HB2	2.01	0.42
3:A:893:LYS:HA	3:A:894:LYS:HB3	2.01	0.42
3:A:313:ARG:HG3	3:A:320:TYR:CD2	2.55	0.42
3:A:403:ARG:NH2	3:A:889:LEU:HD12	2.35	0.42
3:A:257:TYR:HA	3:A:258:GLY:HA2	1.86	0.41
3:A:6:LEU:HG	3:A:211:VAL:HG21	2.02	0.41
3:A:11:ILE:HD12	3:A:16:PHE:CD2	2.55	0.41
3:A:128:GLN:HG3	7:A:1473:HOH:O	2.21	0.41
3:A:46:ALA:HB3	7:A:1485:HOH:O	2.20	0.41
3:A:893:LYS:HA	3:A:894:LYS:HG2	2.02	0.41
3:A:875:THR:O	3:A:879:PRO:HG2	2.20	0.41
3:A:757:GLU:O	3:A:761:GLN:HG3	2.21	0.41
3:A:326:ILE:O	3:A:330:ARG:HG2	2.21	0.40
3:A:279:LYS:HE2	3:A:358:VAL:O	2.20	0.40
3:A:51:ASP:HB2	7:A:1196:HOH:O	2.20	0.40
3:A:89:LYS:HG3	7:A:1057:HOH:O	2.20	0.40
2:P:105:DG:H2"	2:P:106:DG:C8	2.55	0.40

There are no symmetry-related clashes.

5.3 Torsion angles

5.3.1 Protein backbone ⓘ

In the following table, the Percentiles column shows the percent Ramachandran outliers of the chain as a percentile score with respect to all X-ray entries followed by that with respect to entries of similar resolution. The Analysed column shows the number of residues for which the backbone conformation was analysed, and the total number of residues.

Mol	Chain	Analysed	Favoured	Allowed	Outliers	Percentiles	
3	A	899/909 (99%)	859 (96%)	31 (3%)	9 (1%)	22	32

All (9) Ramachandran outliers are listed below:

Mol	Chain	Res	Type
3	A	858	ILE
3	A	251	LYS
3	A	640	LYS
3	A	895	ALA
3	A	639	SER
3	A	252	VAL
3	A	253	ILE
3	A	794	GLY
3	A	894	LYS

5.3.2 Protein sidechains ⓘ

In the following table, the Percentiles column shows the percent sidechain outliers of the chain as a percentile score with respect to all X-ray entries followed by that with respect to entries of similar resolution. The Analysed column shows the number of residues for which the sidechain conformation was analysed, and the total number of residues.

Mol	Chain	Analysed	Rotameric	Outliers	Percentiles	
3	A	795/805 (99%)	750 (94%)	45 (6%)	29	44

All (45) residues with a non-rotameric sidechain are listed below:

Mol	Chain	Res	Type
3	A	6	LEU
3	A	27	ARG
3	A	48	LYS
3	A	61	LEU
3	A	73	LYS
3	A	98	ASN
3	A	113	PHE
3	A	154	SER
3	A	170	LEU
3	A	180	SER
3	A	197	LEU
3	A	253	ILE
3	A	254	GLU
3	A	255	ASN
3	A	257	TYR
3	A	302	LYS
3	A	303	LEU
3	A	309	ILE

Continued on next page...

Continued from previous page...

Mol	Chain	Res	Type
3	A	332	LEU
3	A	343	LEU
3	A	363	LYS
3	A	373	LEU
3	A	453	VAL
3	A	482	ARG
3	A	533	LEU
3	A	594	LEU
3	A	612	GLU
3	A	618	LEU
3	A	624	SER
3	A	638	GLU
3	A	640	LYS
3	A	686	GLU
3	A	693	LEU
3	A	737	THR
3	A	816	LYS
3	A	818	ASN
3	A	820	ASP
3	A	835	LEU
3	A	855	THR
3	A	862	VAL
3	A	873	GLU
3	A	880	LEU
3	A	885	SER
3	A	894	LYS
3	A	901	PHE

Some sidechains can be flipped to improve hydrogen bonding and reduce clashes. All (16) such sidechains are listed below:

Mol	Chain	Res	Type
3	A	40	HIS
3	A	98	ASN
3	A	131	HIS
3	A	203	ASN
3	A	255	ASN
3	A	333	GLN
3	A	339	GLN
3	A	354	GLN
3	A	376	GLN
3	A	377	ASN
3	A	546	GLN

Continued on next page...

Continued from previous page...

Mol	Chain	Res	Type
3	A	564	ASN
3	A	678	GLN
3	A	761	GLN
3	A	773	GLN
3	A	786	ASN

5.3.3 RNA ⓘ

There are no RNA chains in this entry.

5.4 Non-standard residues in protein, DNA, RNA chains ⓘ

1 non-standard protein/DNA/RNA residue is modelled in this entry.

In the following table, the Counts columns list the number of bonds (or angles) for which Mogul statistics could be retrieved, the number of bonds (or angles) that are observed in the model and the number of bonds (or angles) that are defined in the chemical component dictionary. The Link column lists molecule types, if any, to which the group is linked. The Z score for a bond length (or angle) is the number of standard deviations the observed value is removed from the expected value. A bond length (or angle) with $|Z| > 2$ is considered an outlier worth inspection. RMSZ is the root-mean-square of all Z scores of the bond lengths (or angles).

Mol	Type	Chain	Res	Link	Bond lengths			Bond angles		
					Counts	RMSZ	# Z > 2	Counts	RMSZ	# Z > 2
2	DOC	P	115	1,2	17,19,20	1.58	2 (11%)	20,26,29	1.76	5 (25%)

In the following table, the Chirals column lists the number of chiral outliers, the number of chiral centers analysed, the number of these observed in the model and the number defined in the chemical component dictionary. Similar counts are reported in the Torsion and Rings columns. '-' means no outliers of that kind were identified.

Mol	Type	Chain	Res	Link	Chirals	Torsions	Rings
2	DOC	P	115	1,2	-	0/5/18/19	0/2/2/2

All (2) bond length outliers are listed below:

Mol	Chain	Res	Type	Atoms	Z	Observed(Å)	Ideal(Å)
2	P	115	DOC	P-OP1	4.70	1.52	1.46
2	P	115	DOC	C2-N1	4.08	1.42	1.38

All (5) bond angle outliers are listed below:

Mol	Chain	Res	Type	Atoms	Z	Observed(°)	Ideal(°)
2	P	115	DOC	C6-C5-C4	4.27	119.25	117.47
2	P	115	DOC	C2-N3-C4	3.10	120.05	115.57
2	P	115	DOC	C3'-C2'-C1'	2.93	106.05	102.80
2	P	115	DOC	O4'-C1'-N1	2.84	113.01	107.68
2	P	115	DOC	O4'-C4'-C3'	2.18	108.46	104.80

There are no chirality outliers.

There are no torsion outliers.

There are no ring outliers.

5.5 Carbohydrates

There are no carbohydrates in this entry.

5.6 Ligand geometry

Of 7 ligands modelled in this entry, 6 are monoatomic - leaving 1 for Mogul analysis.

In the following table, the Counts columns list the number of bonds (or angles) for which Mogul statistics could be retrieved, the number of bonds (or angles) that are observed in the model and the number of bonds (or angles) that are defined in the chemical component dictionary. The Link column lists molecule types, if any, to which the group is linked. The Z score for a bond length (or angle) is the number of standard deviations the observed value is removed from the expected value. A bond length (or angle) with $|Z| > 2$ is considered an outlier worth inspection. RMSZ is the root-mean-square of all Z scores of the bond lengths (or angles).

Mol	Type	Chain	Res	Link	Bond lengths			Bond angles		
					Counts	RMSZ	$\# Z > 2$	Counts	RMSZ	$\# Z > 2$
6	TTP	A	916	4	30,30,30	1.00	2 (6%)	42,47,47	1.90	7 (16%)

In the following table, the Chirals column lists the number of chiral outliers, the number of chiral centers analysed, the number of these observed in the model and the number defined in the chemical component dictionary. Similar counts are reported in the Torsion and Rings columns. '-' means no outliers of that kind were identified.

Mol	Type	Chain	Res	Link	Chirals	Torsions	Rings
6	TTP	A	916	4	-	0/19/34/34	0/2/2/2

All (2) bond length outliers are listed below:

Mol	Chain	Res	Type	Atoms	Z	Observed(Å)	Ideal(Å)
6	A	916	TTP	C4-C5	2.89	1.49	1.42
6	A	916	TTP	C2-N1	2.76	1.41	1.38

All (7) bond angle outliers are listed below:

Mol	Chain	Res	Type	Atoms	Z	Observed(°)	Ideal(°)
6	A	916	TTP	C6-N1-C2	-7.65	120.23	122.41
6	A	916	TTP	N3-C2-N1	6.63	121.51	115.97
6	A	916	TTP	PB-O3B-PG	-3.25	122.16	131.68
6	A	916	TTP	O4'-C1'-N1	3.01	113.34	107.68
6	A	916	TTP	C2'-C1'-N1	-2.43	107.77	114.08
6	A	916	TTP	O2B-PB-O3A	2.16	115.38	105.14
6	A	916	TTP	C4-N3-C2	-2.16	120.97	125.39

There are no chirality outliers.

There are no torsion outliers.

There are no ring outliers.

5.7 Other polymers ⓘ

There are no such residues in this entry.

5.8 Polymer linkage issues

There are no chain breaks in this entry.

6 Fit of model and data ⓘ

6.1 Protein, DNA and RNA chains ⓘ

In the following table, the column labelled ‘#RSRZ> 2’ contains the number (and percentage) of RSRZ outliers, followed by percent RSRZ outliers for the chain as percentile scores relative to all X-ray entries and entries of similar resolution. The OWAB column contains the minimum, median, 95th percentile and maximum values of the occupancy-weighted average B-factor per residue. The column labelled ‘Q< 0.9’ lists the number of (and percentage) of residues with an average occupancy less than 0.9.

Mol	Chain	Analysed	<RSRZ>	#RSRZ>2	OWAB(Å ²)	Q<0.9
1	T	18/18 (100%)	-0.42	1 (5%) 24 22	14, 22, 44, 65	0
2	P	13/13 (100%)	-0.39	0 100 100	18, 25, 46, 52	0
3	A	901/909 (99%)	-0.22	12 (1%) 74 73	17, 29, 49, 80	0
All	All	932/940 (99%)	-0.23	13 (1%) 72 71	14, 29, 49, 80	0

All (13) RSRZ outliers are listed below:

Mol	Chain	Res	Type	RSRZ
3	A	257	TYR	6.5
1	T	1	DT	5.2
3	A	253	ILE	4.8
3	A	255	ASN	4.0
3	A	896	SER	3.1
3	A	252	VAL	2.9
3	A	895	ALA	2.5
3	A	793	VAL	2.5
3	A	789	ALA	2.4
3	A	900	MET	2.4
3	A	254	GLU	2.3
3	A	256	MET	2.3
3	A	250	VAL	2.0

6.2 Non-standard residues in protein, DNA, RNA chains ⓘ

In the following table, the Atoms column lists the number of modelled atoms in the group and the number defined in the chemical component dictionary. LLDF column lists the quality of electron density of the group with respect to its neighbouring residues in protein, DNA or RNA chains. The B-factors column lists the minimum, median, 95th percentile and maximum values of B factors of atoms in the group. The column labelled ‘Q< 0.9’ lists the number of atoms with occupancy less than 0.9.

Mol	Type	Chain	Res	Atoms	RSR	LLDF	B-factors(\AA^2)	Q<0.9
2	DOC	P	115	18/19	0.13	-0.29	16,18,20,21	0

6.3 Carbohydrates ⓘ

There are no carbohydrates in this entry.

6.4 Ligands ⓘ

In the following table, the Atoms column lists the number of modelled atoms in the group and the number defined in the chemical component dictionary. LLDF column lists the quality of electron density of the group with respect to its neighbouring residues in protein, DNA or RNA chains. The B-factors column lists the minimum, median, 95th percentile and maximum values of B factors of atoms in the group. The column labelled 'Q< 0.9' lists the number of atoms with occupancy less than 0.9.

Mol	Type	Chain	Res	Atoms	RSR	LLDF	B-factors(\AA^2)	Q<0.9
4	CA	A	913	1/1	0.19	0.66	48,48,48,48	0
4	CA	A	914	1/1	0.17	0.56	61,61,61,61	0
4	CA	A	912	1/1	0.15	-0.12	91,91,91,91	0
4	CA	A	911	1/1	0.11	-1.91	57,57,57,57	0
6	TTP	A	916	29/29	0.11	-1.91	17,22,31,32	0
5	CL	A	915	1/1	0.08	-4.93	55,55,55,55	0
4	CA	A	910	1/1	0.05	-5.40	48,48,48,48	0

6.5 Other polymers ⓘ

There are no such residues in this entry.