



# Full wwPDB X-ray Structure Validation Report

Feb 27, 2014 – 01:47 PM GMT

PDB ID : 2CLI  
Title : TRYPTOPHAN SYNTHASE IN COMPLEX WITH N-(4'-TRIFLUOROMETHOXYBENZENESULFONYL)-2-AMINO-1-ETHYLPHOSPHATE(F9)  
Authors : Ngo, H.; Harris, R.; Kimmich, N.; Casino, P.; Nicks, D.; Blumenstein, L.; Barends, T.R.; Kulik, V.; Weyand, M.; Schlichting, I.; Dunn, M.F.  
Deposited on : 2006-04-27  
Resolution : 1.70 Å(reported)

This is a full wwPDB validation report for a publicly released PDB entry.  
We welcome your comments at [validation@mail.wwpdb.org](mailto:validation@mail.wwpdb.org)  
A user guide is available at <http://wwpdb.org/ValidationPDFNotes.html>

---

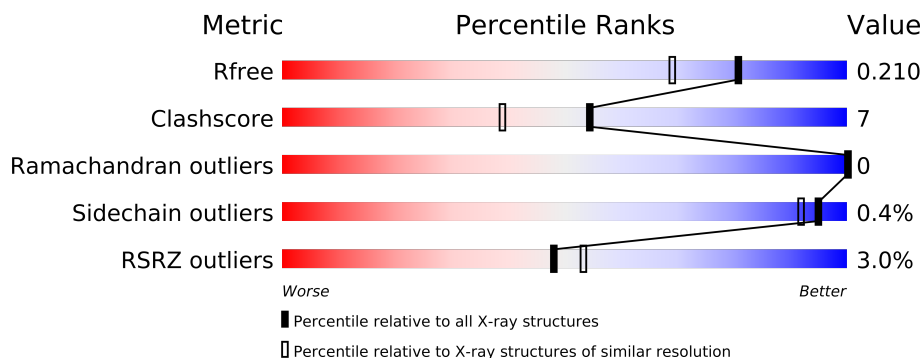
The following versions of software and data (see [references](#)) were used in the production of this report:

MolProbity : 4.02b-467  
Mogul : 1.15 2013  
Xtriage (Phenix) : dev-1323  
EDS : stable22639  
Percentile statistics : 21963  
Refmac : 5.8.0049  
CCP4 : 6.3.0 (Settle)  
Ideal geometry (proteins) : Engh & Huber (2001)  
Ideal geometry (DNA, RNA) : Parkinson et. al. (1996)  
Validation Pipeline (wwPDB-VP) : stable22683

# 1 Overall quality at a glance

The reported resolution of this entry is 1.70 Å.

Percentile scores (ranging between 0-100) for global validation metrics of the entry are shown in the following graphic. The table shows the number of entries on which the scores are based.



Metric	Whole archive (#Entries)	Similar resolution (#Entries, resolution range(Å))
$R_{free}$	66092	2456 (1.70-1.70)
Clashscore	79885	2929 (1.70-1.70)
Ramachandran outliers	78287	2878 (1.70-1.70)
Sidechain outliers	78261	2878 (1.70-1.70)
RSRZ outliers	66119	2456 (1.70-1.70)

The table below summarises the geometric issues observed across the polymeric chains and their fit to the electron density. The red, orange, yellow and green segments on the lower bar indicate the fraction of residues that contain outliers for  $\geq 3$ , 2, 1 and 0 types of geometric quality criteria. The upper red bar (where present) indicates the fraction of residues that have poor fit to the electron density.

Mol	Chain	Length	Quality of chain
1	A	268	
2	B	396	

## 2 Entry composition i

There are 6 unique types of molecules in this entry. The entry contains 5499 atoms, of which 0 are hydrogen and 0 are deuterium.

In the tables below, the ZeroOcc column contains the number of atoms modelled with zero occupancy, the AltConf column contains the number of residues with at least one atom in alternate conformation and the Trace column contains the number of residues modelled with at most 2 atoms.

- Molecule 1 is a protein called TRYPTOPHAN SYNTHASE ALPHA CHAIN.

Mol	Chain	Residues	Atoms					ZeroOcc	AltConf	Trace
1	A	258	Total	C	N	O	S	0	0	0
			1914	1217	327	362	8			

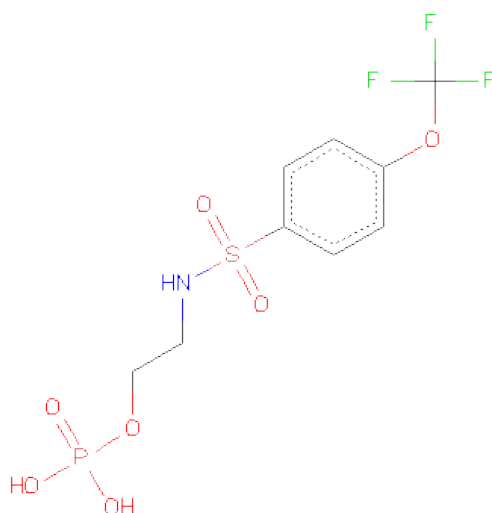
- Molecule 2 is a protein called TRYPTOPHAN SYNTHASE BETA CHAIN.

Mol	Chain	Residues	Atoms					ZeroOcc	AltConf	Trace
2	B	395	Total	C	N	O	S	0	0	1
			2956	1857	518	562	19			

- Molecule 3 is SODIUM ION (three-letter code: NA) (formula: Na).

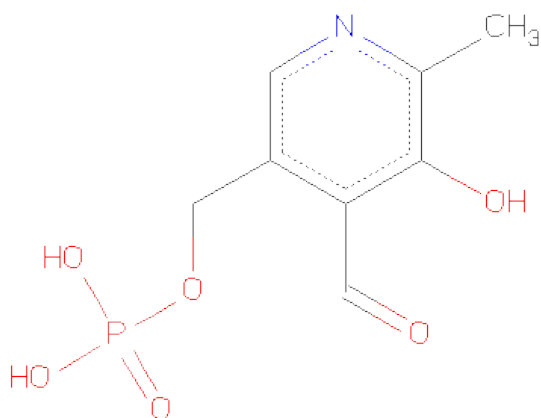
Mol	Chain	Residues	Atoms		ZeroOcc	AltConf
3	A	1	Total	Na	0	0
			1	1		

- Molecule 4 is 2-([4-(TRIFLUOROMETHOXY)PHENYL]SULFONYL)AMINO)ETHYL DIHYDROGEN PHOSPHATE (three-letter code: F9F) (formula: C<sub>9</sub>H<sub>11</sub>F<sub>3</sub>NO<sub>7</sub>PS).



Mol	Chain	Residues	Atoms							ZeroOcc	AltConf
4	A	1	Total	C	F	N	O	P	S	0	0
			22	9	3	1	7	1	1		

- Molecule 5 is PYRIDOXAL-5'-PHOSPHATE (three-letter code: PLP) (formula: C<sub>8</sub>H<sub>10</sub>NO<sub>6</sub>P).



Mol	Chain	Residues	Atoms					ZeroOcc	AltConf
5	B	1	Total	C	N	O	P	0	0
			15	8	1	5	1		

- Molecule 6 is water.

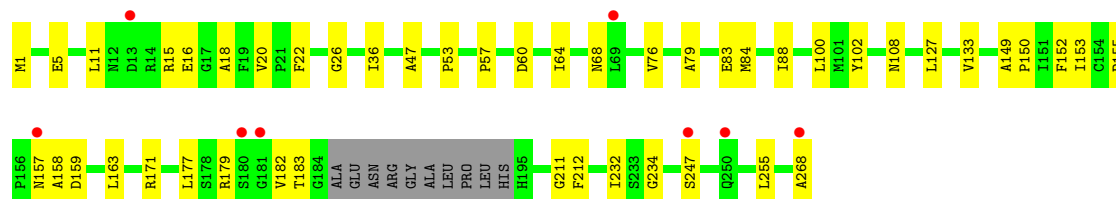
Mol	Chain	Residues	Atoms		ZeroOcc	AltConf
6	A	209	Total	O	0	0
			209	209		
6	B	382	Total	O	0	0
			382	382		

### 3 Residue-property plots

These plots are drawn for all protein, RNA and DNA chains in the entry. The first graphic for a chain summarises the proportions of errors displayed in the second graphic. The second graphic shows the sequence view annotated by issues in geometry and electron density. Residues are color-coded according to the number of geometric quality criteria for which they contain at least one outlier: green = 0, yellow = 1, orange = 2 and red = 3 or more. A red dot above a residue indicates a poor fit to the electron density ( $RSRZ > 2$ ). Stretches of 2 or more consecutive residues without any outlier are shown as a green connector. Residues present in the sample, but not in the model, are shown in grey.

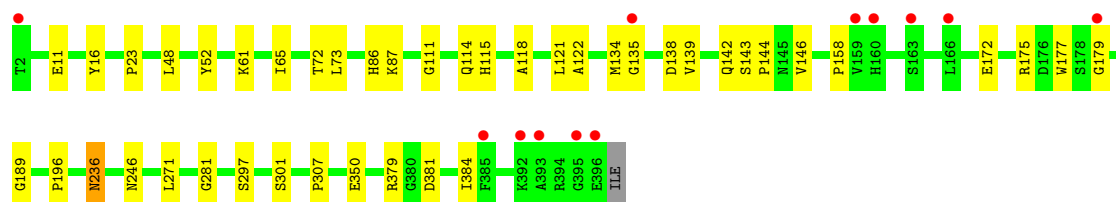
#### • Molecule 1: TRYPTOPHAN SYNTHASE ALPHA CHAIN

Chain A: 



#### • Molecule 2: TRYPTOPHAN SYNTHASE BETA CHAIN

Chain B: 



## 4 Data and refinement statistics

Property	Value	Source
Space group	C 1 2 1	Depositor
Cell constants a, b, c, $\alpha$ , $\beta$ , $\gamma$	182.60Å 59.18Å 67.25Å 90.00° 94.58° 90.00°	Depositor
Resolution (Å)	19.88 – 1.70 19.88 – 1.60	Depositor EDS
% Data completeness (in resolution range)	97.1 (19.88-1.70) 95.8 (19.88-1.60)	Depositor EDS
$R_{merge}$	0.08	Depositor
$R_{sym}$	(Not available)	Depositor
$\langle I/\sigma(I) \rangle$ <sup>1</sup>	1.88 (at 1.60Å)	Xtriage
Refinement program	CNS 1.0	Depositor
R, $R_{free}$	0.188 , 0.206 0.193 , 0.210	Depositor DCC
$R_{free}$ test set	4520 reflections (5.26%)	DCC
Wilson B-factor (Å <sup>2</sup> )	14.5	Xtriage
Anisotropy	0.745	Xtriage
Bulk solvent $k_{sol}$ (e/Å <sup>3</sup> ), $B_{sol}$ (Å <sup>2</sup> )	0.42 , 49.2	EDS
Estimated twinning fraction	No twinning to report.	Xtriage
L-test for twinning	$\langle  L  \rangle = 0.49$ , $\langle L^2 \rangle = 0.32$	Xtriage
Outliers	0 of 90387 reflections	Xtriage
$F_o, F_c$ correlation	0.96	EDS
Total number of atoms	5499	wwPDB-VP
Average B, all atoms (Å <sup>2</sup> )	20.0	wwPDB-VP

Xtriage's analysis on translational NCS is as follows: *The largest off-origin peak in the Patterson function is 5.60% of the height of the origin peak. No significant pseudotranslation is detected.*

<sup>1</sup>Intensities estimated from amplitudes.

## 5 Model quality

### 5.1 Standard geometry

Bond lengths and bond angles in the following residue types are not validated in this section: NA, F9F, PLP

The Z score for a bond length (or angle) is the number of standard deviations the observed value is removed from the expected value. A bond length (or angle) with  $|Z| > 5$  is considered an outlier worth inspection. RMSZ is the root-mean-square of all Z scores of the bond lengths (or angles).

Mol	Chain	Bond lengths		Bond angles	
		RMSZ	$\# Z  > 5$	RMSZ	$\# Z  > 5$
1	A	0.28	0/1950	0.52	0/2652
2	B	0.30	0/3014	0.57	0/4078
All	All	0.30	0/4964	0.55	0/6730

There are no bond length outliers.

There are no bond angle outliers.

There are no chirality outliers.

There are no planarity outliers.

### 5.2 Close contacts

In the following table, the Non-H and H(model) columns list the number of non-hydrogen atoms and hydrogen atoms in the chain respectively. The H(added) column lists the number of hydrogens added by MolProbity. The Clashes column lists the number of clashes within the asymmetric unit, and the number in parentheses is this value normalized per 1000 atoms of the molecule in the chain. The Symm-Clashes column gives symmetry related clashes, in the same way as for the Clashes column.

Mol	Chain	Non-H	H(model)	H(added)	Clashes	Symm-Clashes
1	A	1914	0	1896	36	0
2	B	2956	0	2903	32	0
3	A	1	0	0	0	0
4	A	22	0	9	2	0
5	B	15	0	7	0	0
6	A	209	0	0	5	0
6	B	382	0	0	4	0
All	All	5499	0	4815	66	0

Clashscore is defined as the number of clashes calculated for the entry per 1000 atoms (including

hydrogens) of the entry. The overall clashscore for this entry is 7.

All (66) close contacts within the same asymmetric unit are listed below.

Atom-1	Atom-2	Distance(Å)	Clash(Å)
2:B:87:LYS:HD2	2:B:114:GLN:HG3	1.46	0.95
1:A:53:PRO:HA	1:A:68:ASN:HD22	1.59	0.67
1:A:60:ASP:HB3	1:A:64:ILE:HB	1.78	0.65
2:B:61:LYS:NZ	2:B:72:THR:HG23	2.17	0.59
1:A:127:LEU:HD21	1:A:153:ILE:HD11	1.85	0.59
1:A:182:VAL:HG11	2:B:175:ARG:HG2	1.86	0.58
1:A:159:ASP:O	1:A:163:LEU:HD23	2.05	0.56
1:A:133:VAL:HG12	1:A:152:PHE:CD1	2.41	0.55
1:A:53:PRO:HA	1:A:68:ASN:ND2	2.21	0.55
1:A:1:MET:HG2	1:A:149:ALA:HB2	1.89	0.55
1:A:15:ARG:O	1:A:268:ALA:HB2	2.08	0.54
1:A:211:GLY:O	1:A:212:PHE:HB2	2.08	0.52
1:A:183:THR:HG21	4:A:1269:F9F:H5	1.92	0.52
2:B:381:ASP:O	2:B:384:ILE:HG12	2.11	0.51
1:A:153:ILE:HD12	1:A:153:ILE:N	2.26	0.50
1:A:155:PRO:HG2	1:A:158:ALA:HB2	1.93	0.50
2:B:379:ARG:NH1	6:B:2372:HOH:O	2.45	0.50
2:B:301:SER:OG	2:B:350:GLU:HG3	2.12	0.49
1:A:108:ASN:HA	6:A:2103:HOH:O	2.13	0.48
1:A:16:GLU:HB3	6:A:2020:HOH:O	2.13	0.48
2:B:271:LEU:O	2:B:271:LEU:HD23	2.13	0.48
2:B:134:MET:CE	2:B:139:VAL:HG22	2.44	0.47
2:B:16:TYR:O	2:B:281:GLY:HA2	2.14	0.47
2:B:142:GLN:O	2:B:146:VAL:HG23	2.15	0.47
2:B:143:SER:HB3	2:B:144:PRO:HD3	1.97	0.47
2:B:11:GLU:HG2	6:B:2024:HOH:O	2.16	0.46
1:A:157:ASN:HD21	2:B:23:PRO:HG2	1.81	0.46
1:A:153:ILE:HG23	1:A:177:LEU:HG	1.97	0.46
2:B:177:TRP:C	2:B:179:GLY:H	2.18	0.45
2:B:135:GLY:O	2:B:139:VAL:HG23	2.17	0.45
1:A:11:LEU:CD1	1:A:18:ALA:HB2	2.47	0.45
2:B:172:GLU:HA	2:B:175:ARG:HD2	1.98	0.45
2:B:134:MET:CE	2:B:146:VAL:HG22	2.47	0.45
2:B:121:LEU:HD12	2:B:122:ALA:N	2.30	0.45
2:B:271:LEU:C	2:B:271:LEU:HD23	2.37	0.45
2:B:118:ALA:O	2:B:121:LEU:HG	2.16	0.45
1:A:57:PRO:HA	1:A:102:TYR:CZ	2.52	0.45
2:B:134:MET:HB3	2:B:134:MET:HE2	1.73	0.45
2:B:86:HIS:CE1	2:B:236:ASN:HB3	2.53	0.44
1:A:79:ALA:O	1:A:83:GLU:HG3	2.17	0.44

*Continued on next page...*



Continued from previous page...

Atom-1	Atom-2	Distance(Å)	Clash(Å)
1:A:150:PRO:HD2	1:A:171:ARG:HB2	2.00	0.44
1:A:84:MET:O	1:A:88:ILE:HG13	2.17	0.44
1:A:247:SER:HB2	6:A:2194:HOH:O	2.17	0.44
2:B:65:ILE:HD11	2:B:73:LEU:HD23	1.99	0.44
1:A:234:GLY:HA3	4:A:1269:F9F:H151	1.99	0.44
1:A:20:VAL:HG22	1:A:47:ALA:HB3	1.99	0.44
1:A:22:PHE:CD1	1:A:22:PHE:C	2.91	0.43
2:B:134:MET:O	2:B:158:PRO:HA	2.19	0.43
1:A:36:ILE:HG23	1:A:255:LEU:HD13	2.01	0.43
1:A:127:LEU:HD23	1:A:127:LEU:C	2.39	0.42
1:A:100:LEU:HD13	1:A:100:LEU:C	2.40	0.42
1:A:20:VAL:O	1:A:232:ILE:HA	2.20	0.42
2:B:111:GLY:O	2:B:138:ASP:HB3	2.20	0.42
1:A:153:ILE:HD13	6:A:2128:HOH:O	2.20	0.42
1:A:26:GLY:HA3	1:A:76:VAL:HG21	2.02	0.41
2:B:246:ASN:HB2	6:B:2247:HOH:O	2.20	0.41
2:B:111:GLY:HA2	6:B:2149:HOH:O	2.20	0.41
2:B:48:LEU:O	2:B:52:TYR:HB3	2.21	0.41
1:A:5:GLU:HG3	6:A:2001:HOH:O	2.19	0.41
2:B:115:HIS:CE1	2:B:189:GLY:HA2	2.56	0.41
2:B:65:ILE:HD11	2:B:73:LEU:CD2	2.51	0.41
1:A:179:ARG:HH11	1:A:179:ARG:HG3	1.86	0.41
2:B:297:SER:OG	2:B:307:PRO:HA	2.22	0.40
2:B:134:MET:HE3	2:B:146:VAL:HG22	2.03	0.40
1:A:1:MET:CG	1:A:149:ALA:HB2	2.51	0.40
1:A:20:VAL:HB	1:A:232:ILE:HG12	2.03	0.40

There are no symmetry-related clashes.

## 5.3 Torsion angles

### 5.3.1 Protein backbone ⓘ

In the following table, the Percentiles column shows the percent Ramachandran outliers of the chain as a percentile score with respect to all X-ray entries followed by that with respect to entries of similar resolution. The Analysed column shows the number of residues for which the backbone conformation was analysed, and the total number of residues.

Mol	Chain	Analysed	Favoured	Allowed	Outliers	Percentiles	
1	A	254/268 (95%)	248 (98%)	6 (2%)	0	100	100
2	B	393/396 (99%)	381 (97%)	12 (3%)	0	100	100

Continued on next page...

*Continued from previous page...*

Mol	Chain	Analysed	Favoured	Allowed	Outliers	Percentiles	
All	All	647/664 (97%)	629 (97%)	18 (3%)	0	100	100

There are no Ramachandran outliers to report.

### 5.3.2 Protein sidechains ⓘ

In the following table, the Percentiles column shows the percent sidechain outliers of the chain as a percentile score with respect to all X-ray entries followed by that with respect to entries of similar resolution. The Analysed column shows the number of residues for which the sidechain conformation was analysed, and the total number of residues.

Mol	Chain	Analysed	Rotameric	Outliers	Percentiles	
1	A	194/208 (93%)	194 (100%)	0	100	100
2	B	302/310 (97%)	300 (99%)	2 (1%)	91	85
All	All	496/518 (96%)	494 (100%)	2 (0%)	95	92

All (2) residues with a non-rotameric sidechain are listed below:

Mol	Chain	Res	Type
2	B	196	PRO
2	B	236	ASN

Some sidechains can be flipped to improve hydrogen bonding and reduce clashes. All (9) such sidechains are listed below:

Mol	Chain	Res	Type
1	A	10	GLN
1	A	68	ASN
1	A	210	GLN
2	B	26	ASN
2	B	64	ASN
2	B	142	GLN
2	B	145	ASN
2	B	236	ASN
2	B	375	ASN

### 5.3.3 RNA ⓘ

There are no RNA chains in this entry.

## 5.4 Non-standard residues in protein, DNA, RNA chains ⓘ

There are no non-standard protein/DNA/RNA residues in this entry.

## 5.5 Carbohydrates ⓘ

There are no carbohydrates in this entry.

## 5.6 Ligand geometry ⓘ

Of 3 ligands modelled in this entry, 1 is monoatomic - leaving 2 for Mogul analysis.

In the following table, the Counts columns list the number of bonds (or angles) for which Mogul statistics could be retrieved, the number of bonds (or angles) that are observed in the model and the number of bonds (or angles) that are defined in the chemical component dictionary. The Link column lists molecule types, if any, to which the group is linked. The Z score for a bond length (or angle) is the number of standard deviations the observed value is removed from the expected value. A bond length (or angle) with  $|Z| > 2$  is considered an outlier worth inspection. RMSZ is the root-mean-square of all Z scores of the bond lengths (or angles).

Mol	Type	Chain	Res	Link	Bond lengths			Bond angles		
					Counts	RMSZ	# $ Z  > 2$	Counts	RMSZ	# $ Z  > 2$
4	F9F	A	1269	-	22,22,22	3.61	10 (45%)	33,33,33	2.00	7 (21%)
5	PLP	B	1396	2	14,15,16	1.63	3 (21%)	20,22,23	1.63	2 (10%)

In the following table, the Chirals column lists the number of chiral outliers, the number of chiral centers analysed, the number of these observed in the model and the number defined in the chemical component dictionary. Similar counts are reported in the Torsion and Rings columns. '-' means no outliers of that kind were identified.

Mol	Type	Chain	Res	Link	Chirals	Torsions	Rings
4	F9F	A	1269	-	-	0/20/20/20	0/1/1/1
5	PLP	B	1396	2	-	0/6/6/8	0/1/1/1

All (13) bond length outliers are listed below:

Mol	Chain	Res	Type	Atoms	Z	Observed(Å)	Ideal(Å)
4	A	1269	F9F	C5-C4	8.77	1.53	1.38
4	A	1269	F9F	S12-N13	8.66	1.72	1.61
4	A	1269	F9F	C3-C2	5.62	1.49	1.38
4	A	1269	F9F	O22-S12	5.14	1.49	1.43
4	A	1269	F9F	O21-S12	4.54	1.48	1.43
4	A	1269	F9F	C2-C1	4.16	1.47	1.38

*Continued on next page...*

*Continued from previous page...*

Mol	Chain	Res	Type	Atoms	Z	Observed(Å)	Ideal(Å)
5	B	1396	PLP	C3-C2	-4.11	1.37	1.40
4	A	1269	F9F	C6-C1	3.16	1.45	1.38
4	A	1269	F9F	C4-S12	2.67	1.80	1.76
5	B	1396	PLP	C5A-C5	2.56	1.58	1.51
4	A	1269	F9F	C6-C5	2.25	1.43	1.38
4	A	1269	F9F	O7-C8	2.16	1.48	1.30
5	B	1396	PLP	P-O3P	-2.00	1.47	1.54

All (9) bond angle outliers are listed below:

Mol	Chain	Res	Type	Atoms	Z	Observed(°)	Ideal(°)
4	A	1269	F9F	C2-C3-C4	5.46	125.73	119.50
4	A	1269	F9F	O22-S12-O21	-5.43	112.25	119.55
5	B	1396	PLP	O4P-C5A-C5	5.34	120.12	109.26
4	A	1269	F9F	C3-C2-C1	-4.72	113.44	119.76
4	A	1269	F9F	O21-S12-N13	3.55	112.97	107.05
4	A	1269	F9F	C4-S12-N13	3.17	111.76	107.48
4	A	1269	F9F	C5-C4-S12	2.75	122.97	119.78
5	B	1396	PLP	O4P-P-O1P	-2.58	99.13	106.71
4	A	1269	F9F	C6-C1-C2	2.10	123.82	120.21

There are no chirality outliers.

There are no torsion outliers.

There are no ring outliers.

## 5.7 Other polymers ⓘ

There are no such residues in this entry.

## 5.8 Polymer linkage issues

There are no chain breaks in this entry.

## 6 Fit of model and data ⓘ

### 6.1 Protein, DNA and RNA chains ⓘ

In the following table, the column labelled ‘#RSRZ> 2’ contains the number (and percentage) of RSRZ outliers, followed by percent RSRZ outliers for the chain as percentile scores relative to all X-ray entries and entries of similar resolution. The OWAB column contains the minimum, median, 95<sup>th</sup> percentile and maximum values of the occupancy-weighted average B-factor per residue. The column labelled ‘Q< 0.9’ lists the number of (and percentage) of residues with an average occupancy less than 0.9.

Mol	Chain	Analysed	<RSRZ>	#RSRZ>2	OWAB(Å <sup>2</sup> )	Q<0.9
1	A	258/268 (96%)	0.06	8 (3%) 47 52	11, 21, 35, 46	0
2	B	395/396 (99%)	-0.08	12 (3%) 48 53	8, 14, 36, 53	0
All	All	653/664 (98%)	-0.02	20 (3%) 48 52	8, 17, 36, 53	0

All (20) RSRZ outliers are listed below:

Mol	Chain	Res	Type	RSRZ
2	B	396	GLU	4.6
2	B	393	ALA	4.5
1	A	268	ALA	4.3
1	A	157	ASN	3.9
2	B	395	GLY	3.9
2	B	163	SER	3.2
2	B	2	THR	3.2
2	B	159	VAL	3.1
2	B	160	HIS	3.1
1	A	180	SER	2.8
1	A	247	SER	2.7
2	B	166	LEU	2.6
2	B	385	PHE	2.5
1	A	13	ASP	2.5
2	B	179	GLY	2.5
1	A	250	GLN	2.2
2	B	135	GLY	2.2
1	A	181	GLY	2.2
1	A	69	LEU	2.1
2	B	392	LYS	2.1

## 6.2 Non-standard residues in protein, DNA, RNA chains

There are no non-standard protein/DNA/RNA residues in this entry.

## 6.3 Carbohydrates

There are no carbohydrates in this entry.

## 6.4 Ligands

In the following table, the Atoms column lists the number of modelled atoms in the group and the number defined in the chemical component dictionary. LLDF column lists the quality of electron density of the group with respect to its neighbouring residues in protein, DNA or RNA chains. The B-factors column lists the minimum, median, 95<sup>th</sup> percentile and maximum values of B factors of atoms in the group. The column labelled 'Q< 0.9' lists the number of atoms with occupancy less than 0.9.

Mol	Type	Chain	Res	Atoms	RSR	LLDF	B-factors(Å <sup>2</sup> )	Q<0.9
4	F9F	A	1269	22/22	0.16	1.26	27,32,34,35	0
5	PLP	B	1396	15/16	0.04	-1.00	9,10,11,14	0
3	NA	A	1268	1/1	0.04	-1.30	13,13,13,13	0

## 6.5 Other polymers

There are no such residues in this entry.