



Full wwPDB X-ray Structure Validation Report

Mar 31, 2014 – 03:30 PM BST

PDB ID : 4CLZ
Title : Crystal structure of human soluble Adenylyl Cyclase with Inhibitor 4, 4'-Diisothiocyano-2,2'-stilbenedisulfonicacid
Authors : Kleinboelting, S.; Weyand, M.; Steegborn, C.
Deposited on : 2014-01-15
Resolution : 1.90 Å(reported)

This is a full wwPDB validation report for a publicly released PDB entry.
We welcome your comments at validation@mail.wwpdb.org
A user guide is available at <http://wwpdb.org/ValidationPDFNotes.html>

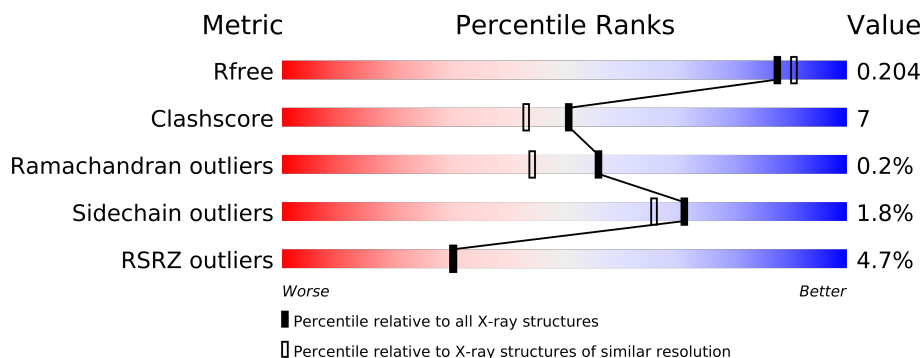
The following versions of software and data (see [references](#)) were used in the production of this report:

MolProbity : 4.02b-467
Mogul : 1.15 2013
Xtriage (Phenix) : dev-1323
EDS : stable23004
Percentile statistics : 21963
Refmac : 5.8.0049
CCP4 : 6.3.0 (Settle)
Ideal geometry (proteins) : Engh & Huber (2001)
Ideal geometry (DNA, RNA) : Parkinson et. al. (1996)
Validation Pipeline (wwPDB-VP) : stable23004

1 Overall quality at a glance

The reported resolution of this entry is 1.90 Å.

Percentile scores (ranging between 0-100) for global validation metrics of the entry are shown in the following graphic. The table shows the number of entries on which the scores are based.



Metric	Whole archive (#Entries)	Similar resolution (#Entries, resolution range(Å))
R_{free}	66092	3684 (1.90-1.90)
Clashscore	79885	4465 (1.90-1.90)
Ramachandran outliers	78287	4413 (1.90-1.90)
Sidechain outliers	78261	4414 (1.90-1.90)
RSRZ outliers	66119	3686 (1.90-1.90)

The table below summarises the geometric issues observed across the polymeric chains and their fit to the electron density. The red, orange, yellow and green segments on the lower bar indicate the fraction of residues that contain outliers for ≥ 3 , 2, 1 and 0 types of geometric quality criteria. The upper red bar (where present) indicates the fraction of residues that have poor fit to the electron density.

Mol	Chain	Length	Quality of chain
1	A	475	

The following table lists non-polymeric compounds that are outliers for geometric or electron-density-fit criteria:

Mol	Type	Chain	Res	Geometry	Electron density
2	ACT	A	1471	-	X
2	ACT	A	1472	-	X
3	EDO	A	1475	-	X
4	PEG	A	1476	-	X
4	PEG	A	1477	-	X
4	PEG	A	1478	-	X
5	4DS	A	1481	-	X
6	DMS	A	1483	-	X

2 Entry composition i

There are 7 unique types of molecules in this entry. The entry contains 4116 atoms, of which 0 are hydrogen and 0 are deuterium.

In the tables below, the ZeroOcc column contains the number of atoms modelled with zero occupancy, the AltConf column contains the number of residues with at least one atom in alternate conformation and the Trace column contains the number of residues modelled with at most 2 atoms.

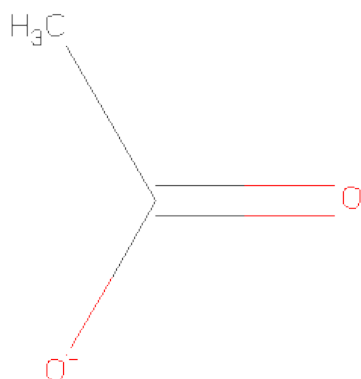
- Molecule 1 is a protein called ADENYLATE CYCLASE TYPE 10.

Mol	Chain	Residues	Atoms					ZeroOcc	AltConf	Trace
			Total	C	N	O	S			
1	A	458	3692	2400	590	666	36	0	15	0

There are 6 discrepancies between the modelled and reference sequences:

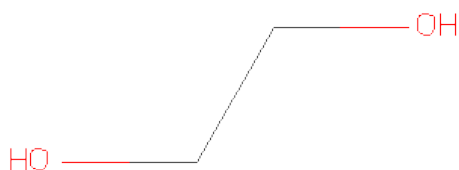
Chain	Residue	Modelled	Actual	Comment	Reference
A	470	HIS	-	EXPRESSION TAG	UNP Q96PN6
A	471	HIS	-	EXPRESSION TAG	UNP Q96PN6
A	472	HIS	-	EXPRESSION TAG	UNP Q96PN6
A	473	HIS	-	EXPRESSION TAG	UNP Q96PN6
A	474	HIS	-	EXPRESSION TAG	UNP Q96PN6
A	475	HIS	-	EXPRESSION TAG	UNP Q96PN6

- Molecule 2 is ACETATE ION (three-letter code: ACT) (formula: C₂H₃O₂).



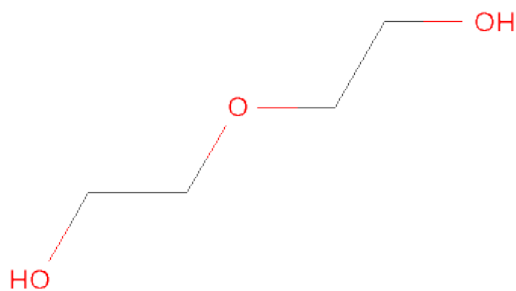
Mol	Chain	Residues	Atoms			ZeroOcc	AltConf
2	A	1	Total	C	O	0	0
			4	2	2		
2	A	1	Total	C	O	0	0
			4	2	2		
2	A	1	Total	C	O	0	0
			4	2	2		
2	A	1	Total	C	O	0	0
			4	2	2		

- Molecule 3 is 1,2-ETHANEDIOL (three-letter code: EDO) (formula: C₂H₆O₂).



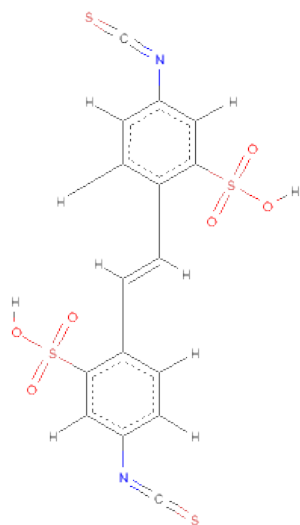
Mol	Chain	Residues	Atoms			ZeroOcc	AltConf
3	A	1	Total	C	O	0	0
			4	2	2		
3	A	1	Total	C	O	0	0
			4	2	2		
3	A	1	Total	C	O	0	0
			4	2	2		

- Molecule 4 is DI(HYDROXYETHYL)ETHER (three-letter code: PEG) (formula: C₄H₁₀O₃).



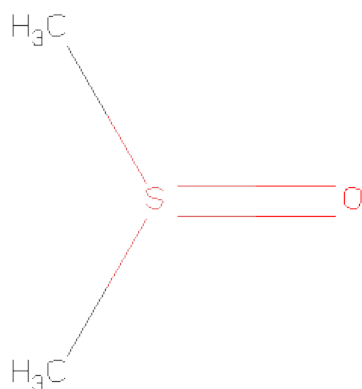
Mol	Chain	Residues	Atoms			ZeroOcc	AltConf
4	A	1	Total	C	O	0	0
			7	4	3		
4	A	1	Total	C	O	0	0
			7	4	3		
4	A	1	Total	C	O	0	0
			7	4	3		

- Molecule 5 is 4,4'-DIISOTHIOCYANO-2,2'-STILBENEDISULFONICACID (three-letter code: 4DS) (formula: C₁₆H₁₀N₂O₆S₄).



Mol	Chain	Residues	Atoms					ZeroOcc	AltConf
5	A	1	Total	C	N	O	S	0	0
			28	16	2	6	4		
5	A	1	Total	C	N	O	S	0	0
			28	16	2	6	4		
5	A	1	Total	C	N	O	S	0	0
			28	16	2	6	4		

- Molecule 6 is DIMETHYL SULFOXIDE (three-letter code: DMS) (formula: C₂H₆OS).



Mol	Chain	Residues	Atoms				ZeroOcc	AltConf
6	A	1	Total	C	O	S	0	0
			4	2	1	1		
6	A	1	Total	C	O	S	0	0
			4	2	1	1		

- Molecule 7 is water.

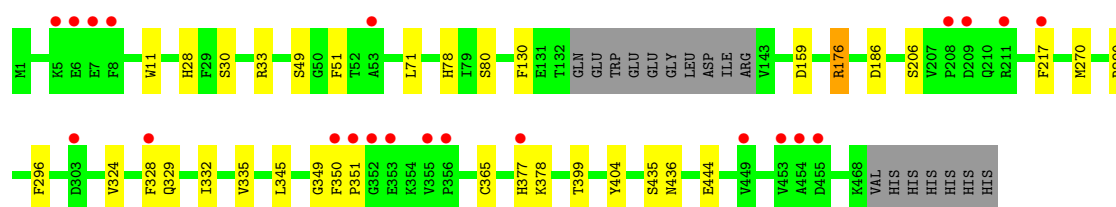
Mol	Chain	Residues	Atoms		ZeroOcc	AltConf
7	A	283	Total	O	0	0
			283	283		

3 Residue-property plots

These plots are drawn for all protein, RNA and DNA chains in the entry. The first graphic for a chain summarises the proportions of errors displayed in the second graphic. The second graphic shows the sequence view annotated by issues in geometry and electron density. Residues are color-coded according to the number of geometric quality criteria for which they contain at least one outlier: green = 0, yellow = 1, orange = 2 and red = 3 or more. A red dot above a residue indicates a poor fit to the electron density ($RSRZ > 2$). Stretches of 2 or more consecutive residues without any outlier are shown as a green connector. Residues present in the sample, but not in the model, are shown in grey.

- Molecule 1: ADENYLATE CYCLASE TYPE 10

Chain A: 



4 Data and refinement statistics

Property	Value	Source
Space group	P 63	Depositor
Cell constants a, b, c, α , β , γ	100.51Å 100.51Å 97.41Å 90.00° 90.00° 120.00°	Depositor
Resolution (Å)	87.04 – 1.90 48.71 – 1.90	Depositor EDS
% Data completeness (in resolution range)	99.9 (87.04-1.90) 100.0 (48.71-1.90)	Depositor EDS
R_{merge}	0.08	Depositor
R_{sym}	(Not available)	Depositor
$\langle I/\sigma(I) \rangle$ ¹	2.84 (at 1.90Å)	Xtriage
Refinement program	REFMAC 5.8.0049	Depositor
R, R_{free}	0.161 , 0.199 0.173 , 0.204	Depositor DCC
R_{free} test set	2210 reflections (5.29%)	DCC
Wilson B-factor (Å ²)	24.8	Xtriage
Anisotropy	0.104	Xtriage
Bulk solvent k_{sol} (e/Å ³), B_{sol} (Å ²)	0.36 , 42.0	EDS
Estimated twinning fraction	0.046 for h,-h-k,-l	Xtriage
L-test for twinning	$\langle L \rangle = 0.50$, $\langle L^2 \rangle = 0.33$	Xtriage
Outliers	0 of 44016 reflections	Xtriage
F_o, F_c correlation	0.96	EDS
Total number of atoms	4116	wwPDB-VP
Average B, all atoms (Å ²)	33.0	wwPDB-VP

Xtriage's analysis on translational NCS is as follows: *The largest off-origin peak in the Patterson function is 3.60% of the height of the origin peak. No significant pseudotranslation is detected.*

¹Intensities estimated from amplitudes.

5 Model quality ⓘ

5.1 Standard geometry ⓘ

Bond lengths and bond angles in the following residue types are not validated in this section: CME, EDO, DMS, ACT, 4DS, PEG

The Z score for a bond length (or angle) is the number of standard deviations the observed value is removed from the expected value. A bond length (or angle) with $|Z| > 5$ is considered an outlier worth inspection. RMSZ is the root-mean-square of all Z scores of the bond lengths (or angles).

Mol	Chain	Bond lengths		Bond angles	
		RMSZ	$\# Z > 5$	RMSZ	$\# Z > 5$
1	A	0.96	1/3814 (0.0%)	0.96	6/5161 (0.1%)

All (1) bond length outliers are listed below:

Mol	Chain	Res	Type	Atoms	Z	Observed(Å)	Ideal(Å)
1	A	444	GLU	CD-OE1	5.73	1.31	1.25

All (6) bond angle outliers are listed below:

Mol	Chain	Res	Type	Atoms	Z	Observed(°)	Ideal(°)
1	A	159	ASP	CB-CG-OD1	7.12	124.71	118.30
1	A	176	ARG	NE-CZ-NH1	5.94	123.27	120.30
1	A	186	ASP	CB-CG-OD1	5.93	123.63	118.30
1	A	159	ASP	CB-CG-OD2	-5.70	113.17	118.30
1	A	33	ARG	NE-CZ-NH1	5.65	123.13	120.30
1	A	186	ASP	CB-CG-OD2	-5.35	113.48	118.30

There are no chirality outliers.

There are no planarity outliers.

5.2 Close contacts ⓘ

In the following table, the Non-H and H(model) columns list the number of non-hydrogen atoms and hydrogen atoms in the chain respectively. The H(added) column lists the number of hydrogens added by MolProbity. The Clashes column lists the number of clashes within the asymmetric unit, and the number in parentheses is this value normalized per 1000 atoms of the molecule in the chain. The Symm-Clashes column gives symmetry related clashes, in the same way as for the Clashes column.

Mol	Chain	Non-H	H(model)	H(added)	Clashes	Symm-Clashes
1	A	3692	0	0	21	0
2	A	16	0	12	4	0
3	A	12	0	17	4	0
4	A	21	0	30	8	0
5	A	84	0	25	0	0
6	A	8	0	12	0	0
7	A	283	0	0	9	0
All	All	4116	0	96	29	0

Clashscore is defined as the number of clashes calculated for the entry per 1000 atoms (including hydrogens) of the entry. The overall clashscore for this entry is 7.

All (29) close contacts within the same asymmetric unit are listed below.

Atom-1	Atom-2	Distance(Å)	Clash(Å)
3:A:1475:EDO:H12	7:A:2152:HOH:O	1.83	0.77
3:A:1475:EDO:C1	7:A:2152:HOH:O	2.33	0.76
1:A:290:ARG:NE	1:A:349:GLY:O	2.22	0.72
1:A:399:THR:N	2:A:1471:ACT:H2	2.08	0.68
1:A:436:ASN:CA	7:A:2257:HOH:O	2.41	0.67
1:A:328:PHE:CD2	1:A:365[B]:CYS:SG	2.89	0.66
1:A:28:HIS:NE2	7:A:2028:HOH:O	2.32	0.56
1:A:345:LEU:CD1	4:A:1476:PEG:H12	2.36	0.55
1:A:324:VAL:CG1	1:A:365[A]:CYS:SG	2.95	0.54
1:A:335:VAL:N	4:A:1478:PEG:HO4	2.06	0.54
1:A:435:SER:O	1:A:436:ASN:C	2.45	0.53
1:A:378:LYS:N	7:A:2233:HOH:O	2.40	0.53
1:A:436:ASN:C	7:A:2257:HOH:O	2.45	0.53
1:A:80[A]:SER:OG	2:A:1471:ACT:H1	2.09	0.53
1:A:332:ILE:N	3:A:1474:EDO:HO1	2.09	0.50
1:A:51:PHE:CZ	1:A:71[A]:LEU:CD1	2.94	0.50
1:A:49:SER:CB	7:A:2045:HOH:O	2.60	0.49
4:A:1478:PEG:H41	7:A:2126:HOH:O	2.12	0.48
1:A:78:HIS:ND1	2:A:1470:ACT:H3	2.29	0.47
1:A:377:HIS:O	1:A:378:LYS:CB	2.63	0.45
3:A:1475:EDO:H11	7:A:2152:HOH:O	2.10	0.45
1:A:11:TRP:CE3	4:A:1477:PEG:H31	2.53	0.44
4:A:1477:PEG:H12	4:A:1477:PEG:H32	1.80	0.44
1:A:130:PHE:CE1	2:A:1470:ACT:CH3	3.03	0.42
1:A:328:PHE:CE2	1:A:365[B]:CYS:SG	3.13	0.42
1:A:270[B]:MET:CE	1:A:404:TYR:CD2	3.02	0.41

There are no symmetry-related clashes.

5.3 Torsion angles

5.3.1 Protein backbone ⓘ

In the following table, the Percentiles column shows the percent Ramachandran outliers of the chain as a percentile score with respect to all X-ray entries followed by that with respect to entries of similar resolution. The Analysed column shows the number of residues for which the backbone conformation was analysed, and the total number of residues.

Mol	Chain	Analysed	Favoured	Allowed	Outliers	Percentiles
1	A	468/475 (98%)	453 (97%)	14 (3%)	1 (0%)	56 44

All (1) Ramachandran outliers are listed below:

Mol	Chain	Res	Type
1	A	351	PRO

5.3.2 Protein sidechains ⓘ

In the following table, the Percentiles column shows the percent sidechain outliers of the chain as a percentile score with respect to all X-ray entries followed by that with respect to entries of similar resolution. The Analysed column shows the number of residues for which the sidechain conformation was analysed, and the total number of residues.

Mol	Chain	Analysed	Rotameric	Outliers	Percentiles
1	A	411/418 (98%)	404 (98%)	7 (2%)	73 68

All (7) residues with a non-rotameric sidechain are listed below:

Mol	Chain	Res	Type
1	A	30	SER
1	A	176	ARG
1	A	206	SER
1	A	217	PHE
1	A	296	PHE
1	A	329	GLN
1	A	350	PHE

Some sidechains can be flipped to improve hydrogen bonding and reduce clashes. There are no such sidechains identified.

5.3.3 RNA ⓘ

There are no RNA chains in this entry.

5.4 Non-standard residues in protein, DNA, RNA chains ⓘ

1 non-standard protein/DNA/RNA residue is modelled in this entry.

In the following table, the Counts columns list the number of bonds (or angles) for which Mogul statistics could be retrieved, the number of bonds (or angles) that are observed in the model and the number of bonds (or angles) that are defined in the chemical component dictionary. The Link column lists molecule types, if any, to which the group is linked. The Z score for a bond length (or angle) is the number of standard deviations the observed value is removed from the expected value. A bond length (or angle) with $|Z| > 2$ is considered an outlier worth inspection. RMSZ is the root-mean-square of all Z scores of the bond lengths (or angles).

Mol	Type	Chain	Res	Link	Bond lengths			Bond angles		
					Counts	RMSZ	$\# Z > 2$	Counts	RMSZ	$\# Z > 2$
1	CME	A	253	1	9,9,10	6.00	2 (22%)	7,9,11	1.79	2 (28%)

In the following table, the Chirals column lists the number of chiral outliers, the number of chiral centers analysed, the number of these observed in the model and the number defined in the chemical component dictionary. Similar counts are reported in the Torsion and Rings columns. '-' means no outliers of that kind were identified.

Mol	Type	Chain	Res	Link	Chirals	Torsions	Rings
1	CME	A	253	1	-	0/6/8/10	0/0/0/0

All (2) bond length outliers are listed below:

Mol	Chain	Res	Type	Atoms	Z	Observed(Å)	Ideal(Å)
1	A	253	CME	O-C	17.51	1.23	1.11
1	A	253	CME	CA-C	3.80	1.55	1.48

All (2) bond angle outliers are listed below:

Mol	Chain	Res	Type	Atoms	Z	Observed(°)	Ideal(°)
1	A	253	CME	C-CA-N	-3.16	110.68	113.83
1	A	253	CME	CZ-CE-SD	-2.57	104.20	113.18

There are no chirality outliers.

There are no torsion outliers.

There are no ring outliers.

5.5 Carbohydrates ⓘ

There are no carbohydrates in this entry.

5.6 Ligand geometry ⓘ

15 ligands are modelled in this entry.

In the following table, the Counts columns list the number of bonds (or angles) for which Mogul statistics could be retrieved, the number of bonds (or angles) that are observed in the model and the number of bonds (or angles) that are defined in the chemical component dictionary. The Link column lists molecule types, if any, to which the group is linked. The Z score for a bond length (or angle) is the number of standard deviations the observed value is removed from the expected value. A bond length (or angle) with $|Z| > 2$ is considered an outlier worth inspection. RMSZ is the root-mean-square of all Z scores of the bond lengths (or angles).

Mol	Type	Chain	Res	Link	Bond lengths			Bond angles		
					Counts	RMSZ	# $ Z > 2$	Counts	RMSZ	# $ Z > 2$
2	ACT	A	1469	-	1,3,3	0.53	0	0,3,3	0.00	-
2	ACT	A	1470	-	1,3,3	2.65	1 (100%)	0,3,3	0.00	-
2	ACT	A	1471	-	1,3,3	3.92	1 (100%)	0,3,3	0.00	-
2	ACT	A	1472	-	1,3,3	1.84	0	0,3,3	0.00	-
3	EDO	A	1473	-	3,3,3	0.74	0	2,2,2	0.92	0
3	EDO	A	1474	-	3,3,3	0.72	0	2,2,2	0.35	0
3	EDO	A	1475	-	3,3,3	0.77	0	2,2,2	0.67	0
4	PEG	A	1476	-	6,6,6	0.36	0	5,5,5	1.27	1 (20%)
4	PEG	A	1477	-	6,6,6	1.12	0	5,5,5	1.69	2 (40%)
4	PEG	A	1478	-	6,6,6	1.06	0	5,5,5	0.83	0
5	4DS	A	1479	-	29,29,29	1.44	3 (10%)	42,42,42	1.98	12 (28%)
5	4DS	A	1480	-	29,29,29	1.42	4 (13%)	42,42,42	2.05	14 (33%)
5	4DS	A	1481	-	29,29,29	1.59	4 (13%)	42,42,42	2.22	12 (28%)
6	DMS	A	1482	-	3,3,3	0.88	0	3,3,3	0.48	0
6	DMS	A	1483	-	3,3,3	0.29	0	3,3,3	0.72	0

In the following table, the Chirals column lists the number of chiral outliers, the number of chiral centers analysed, the number of these observed in the model and the number defined in the chemical component dictionary. Similar counts are reported in the Torsion and Rings columns. '-' means no outliers of that kind were identified.

Mol	Type	Chain	Res	Link	Chirals	Torsions	Rings
2	ACT	A	1469	-	-	0/0/0/0	0/0/0/0
2	ACT	A	1470	-	-	0/0/0/0	0/0/0/0
2	ACT	A	1471	-	-	0/0/0/0	0/0/0/0

Continued on next page...

Continued from previous page...

Mol	Type	Chain	Res	Link	Chirals	Torsions	Rings
2	ACT	A	1472	-	-	0/0/0/0	0/0/0/0
3	EDO	A	1473	-	-	0/1/1/1	0/0/0/0
3	EDO	A	1474	-	-	0/1/1/1	0/0/0/0
3	EDO	A	1475	-	-	0/1/1/1	0/0/0/0
4	PEG	A	1476	-	-	0/4/4/4	0/0/0/0
4	PEG	A	1477	-	-	0/4/4/4	0/0/0/0
4	PEG	A	1478	-	-	0/4/4/4	0/0/0/0
5	4DS	A	1479	-	-	0/21/23/23	0/2/2/2
5	4DS	A	1480	-	-	0/21/23/23	0/2/2/2
5	4DS	A	1481	-	-	0/21/23/23	0/2/2/2
6	DMS	A	1482	-	-	0/0/0/0	0/0/0/0
6	DMS	A	1483	-	-	0/0/0/0	0/0/0/0

All (13) bond length outliers are listed below:

Mol	Chain	Res	Type	Atoms	Z	Observed(Å)	Ideal(Å)
5	A	1481	4DS	CAJ-CAK	-4.67	1.40	1.47
2	A	1471	ACT	CH3-C	-3.92	1.43	1.48
5	A	1480	4DS	CAJ-CAK	-3.83	1.41	1.47
5	A	1479	4DS	CAM-CAL	-3.73	1.41	1.47
5	A	1481	4DS	CAM-CAL	-3.64	1.41	1.47
5	A	1480	4DS	CAM-CAL	-3.07	1.42	1.47
2	A	1470	ACT	CH3-C	-2.65	1.45	1.48
5	A	1479	4DS	CBA-SBB	2.62	1.71	1.62
5	A	1481	4DS	CAN-SAV	-2.41	1.72	1.78
5	A	1479	4DS	CBA-NAZ	2.33	1.29	1.17
5	A	1480	4DS	CBA-SBB	2.17	1.69	1.62
5	A	1481	4DS	CAT-SAU	2.13	1.69	1.62
5	A	1480	4DS	CAF-CAE	2.01	1.42	1.39

All (41) bond angle outliers are listed below:

Mol	Chain	Res	Type	Atoms	Z	Observed(°)	Ideal(°)
5	A	1481	4DS	CAE-CAJ-CAK	-7.10	117.12	122.69
5	A	1481	4DS	CAF-CAE-CAJ	-5.37	119.78	121.92
5	A	1480	4DS	OAY-SAV-CAN	5.16	112.11	106.17
5	A	1481	4DS	OAY-SAV-CAN	4.81	111.71	106.17
5	A	1479	4DS	CAG-NAZ-CBA	-4.80	118.51	161.34
5	A	1479	4DS	CAM-CAN-SAV	-4.45	117.76	121.41
5	A	1479	4DS	CAF-CAE-CAJ	4.35	123.65	121.92
5	A	1480	4DS	OAC-SAB-CAE	4.28	111.11	106.17
5	A	1480	4DS	OAX-SAV-CAN	3.93	110.70	106.17

Continued on next page...

Continued from previous page...

Mol	Chain	Res	Type	Atoms	Z	Observed(°)	Ideal(°)
5	A	1480	4DS	CAJ-CAE-SAB	-3.88	118.22	121.41
5	A	1480	4DS	CAP-NAS-CAT	-3.67	128.55	161.34
5	A	1479	4DS	OAA-SAB-CAE	3.64	110.52	106.09
5	A	1481	4DS	CAG-NAZ-CBA	-3.60	129.15	161.34
5	A	1481	4DS	CAM-CAN-SAV	-3.52	118.52	121.41
5	A	1479	4DS	OAD-SAB-CAE	3.44	110.14	106.17
5	A	1479	4DS	OAY-SAV-CAN	-3.38	102.28	106.17
5	A	1480	4DS	CAF-CAG-NAZ	3.32	129.54	120.17
5	A	1481	4DS	OAD-SAB-CAE	3.22	109.88	106.17
5	A	1479	4DS	CAN-CAM-CAL	2.99	125.03	122.69
5	A	1481	4DS	CAI-CAJ-CAE	2.97	119.02	116.91
5	A	1480	4DS	CAH-CAG-NAZ	-2.75	112.33	120.13
5	A	1481	4DS	CAO-CAP-NAS	2.65	127.64	120.17
5	A	1481	4DS	OAC-SAB-CAE	2.64	109.21	106.17
5	A	1480	4DS	CAR-CAM-CAN	2.60	118.75	116.91
5	A	1481	4DS	CAP-NAS-CAT	-2.52	138.82	161.34
5	A	1480	4DS	CAN-CAM-CAL	-2.52	120.71	122.69
5	A	1480	4DS	CAG-NAZ-CBA	-2.45	139.46	161.34
4	A	1476	PEG	O4-C4-C3	-2.42	96.11	111.80
5	A	1481	4DS	CAO-CAN-CAM	2.41	122.88	121.92
5	A	1479	4DS	CAR-CAQ-CAP	2.38	123.44	120.39
5	A	1480	4DS	CAM-CAN-SAV	-2.38	119.45	121.41
5	A	1479	4DS	CAE-CAJ-CAK	-2.36	120.84	122.69
5	A	1479	4DS	CAO-CAN-SAV	2.31	120.18	117.67
5	A	1480	4DS	OAA-SAB-CAE	2.30	108.89	106.09
5	A	1481	4DS	CAQ-CAP-NAS	-2.20	113.87	120.13
4	A	1477	PEG	C3-O2-C2	2.14	122.77	113.38
5	A	1480	4DS	CAI-CAH-CAG	2.11	123.09	120.39
5	A	1479	4DS	CAR-CAM-CAL	-2.09	117.08	121.00
5	A	1480	4DS	CAF-CAE-SAB	2.05	119.89	117.67
4	A	1477	PEG	O2-C3-C4	2.04	120.41	110.61
5	A	1479	4DS	OAW-SAV-CAN	2.03	108.55	106.09

There are no chirality outliers.

There are no torsion outliers.

There are no ring outliers.

5.7 Other polymers ⓘ

There are no such residues in this entry.

5.8 Polymer linkage issues

There are no chain breaks in this entry.

6 Fit of model and data ⓘ

6.1 Protein, DNA and RNA chains ⓘ

In the following table, the column labelled ‘#RSRZ> 2’ contains the number (and percentage) of RSRZ outliers, followed by percent RSRZ outliers for the chain as percentile scores relative to all X-ray entries and entries of similar resolution. The OWAB column contains the minimum, median, 95th percentile and maximum values of the occupancy-weighted average B-factor per residue. The column labelled ‘Q< 0.9’ lists the number of (and percentage) of residues with an average occupancy less than 0.9.

Mol	Chain	Analysed	<RSRZ>	#RSRZ>2		OWAB(Å ²)	Q<0.9
1	A	458/475 (96%)	0.01	22 (4%)	29 30	12, 29, 63, 92	0

All (22) RSRZ outliers are listed below:

Mol	Chain	Res	Type	RSRZ
1	A	355	VAL	7.4
1	A	356	PRO	6.1
1	A	351	PRO	5.7
1	A	350	PHE	4.8
1	A	453	VAL	4.2
1	A	352	GLY	3.6
1	A	6	GLU	3.5
1	A	217	PHE	3.4
1	A	328	PHE	3.4
1	A	377	HIS	3.3
1	A	454	ALA	3.1
1	A	209	ASP	3.0
1	A	208	PRO	2.9
1	A	449	VAL	2.8
1	A	353	GLU	2.7
1	A	53	ALA	2.6
1	A	7	GLU	2.5
1	A	5	LYS	2.5
1	A	211	ARG	2.4
1	A	455	ASP	2.4
1	A	303	ASP	2.3
1	A	8	PHE	2.2

6.2 Non-standard residues in protein, DNA, RNA chains ⓘ

In the following table, the Atoms column lists the number of modelled atoms in the group and the number defined in the chemical component dictionary. LLDF column lists the quality of electron density of the group with respect to its neighbouring residues in protein, DNA or RNA chains. The B-factors column lists the minimum, median, 95th percentile and maximum values of B factors of atoms in the group. The column labelled 'Q< 0.9' lists the number of atoms with occupancy less than 0.9.

Mol	Type	Chain	Res	Atoms	RSR	LLDF	B-factors(Å ²)	Q<0.9
1	CME	A	253	10/11	0.09	-0.69	16,19,35,40	0

6.3 Carbohydrates ⓘ

There are no carbohydrates in this entry.

6.4 Ligands ⓘ

In the following table, the Atoms column lists the number of modelled atoms in the group and the number defined in the chemical component dictionary. LLDF column lists the quality of electron density of the group with respect to its neighbouring residues in protein, DNA or RNA chains. The B-factors column lists the minimum, median, 95th percentile and maximum values of B factors of atoms in the group. The column labelled 'Q< 0.9' lists the number of atoms with occupancy less than 0.9.

Mol	Type	Chain	Res	Atoms	RSR	LLDF	B-factors(Å ²)	Q<0.9
4	PEG	A	1477	7/7	0.27	13.13	33,42,50,55	0
4	PEG	A	1478	7/7	0.25	13.02	35,44,54,58	0
2	ACT	A	1472	4/4	0.26	9.02	32,42,57,61	0
3	EDO	A	1475	4/4	0.23	5.56	53,55,57,60	0
2	ACT	A	1471	4/4	0.22	5.02	18,27,45,49	0
4	PEG	A	1476	7/7	0.20	4.42	32,39,43,46	0
5	4DS	A	1481	28/28	0.17	2.49	41,54,65,88	0
6	DMS	A	1483	4/4	0.18	2.06	61,63,67,68	0
3	EDO	A	1473	4/4	0.16	1.79	25,31,31,34	0
3	EDO	A	1474	4/4	0.14	1.78	52,54,56,57	0
2	ACT	A	1469	4/4	0.12	1.48	27,33,40,43	0
2	ACT	A	1470	4/4	0.12	1.30	35,36,44,45	0
5	4DS	A	1479	28/28	0.13	0.79	19,32,46,64	0
5	4DS	A	1480	28/28	0.12	0.02	38,57,67,76	0
6	DMS	A	1482	4/4	0.08	-2.44	25,28,32,35	0

6.5 Other polymers ⓘ

There are no such residues in this entry.