



Full wwPDB X-ray Structure Validation Report

Feb 28, 2014 – 05:21 AM GMT

PDB ID : 3CMF
Title : Crystal structure of human liver 5beta-reductase (AKR1D1) in complex with NADP and CORTISONE. Resolution 1.90 Å.
Authors : Di Costanzo, L.; Drury, J.; Penning, T.M.; Christianson, D.W.
Deposited on : 2008-03-21
Resolution : 1.90 Å(reported)

This is a full wwPDB validation report for a publicly released PDB entry.
We welcome your comments at validation@mail.wwpdb.org
A user guide is available at <http://wwpdb.org/ValidationPDFNotes.html>

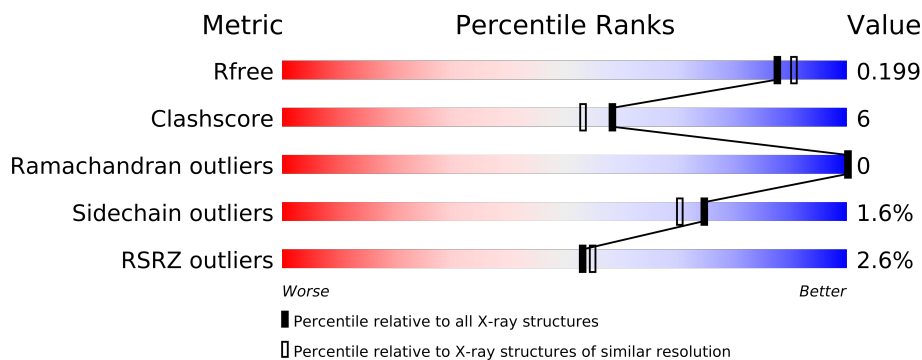
The following versions of software and data (see [references](#)) were used in the production of this report:

MolProbity : 4.02b-467
Mogul : 1.15 2013
Xtriage (Phenix) : dev-1323
EDS : stable22639
Percentile statistics : 21963
Refmac : 5.8.0049
CCP4 : 6.3.0 (Settle)
Ideal geometry (proteins) : Engh & Huber (2001)
Ideal geometry (DNA, RNA) : Parkinson et. al. (1996)
Validation Pipeline (wwPDB-VP) : stable22683

1 Overall quality at a glance

The reported resolution of this entry is 1.90 Å.

Percentile scores (ranging between 0-100) for global validation metrics of the entry are shown in the following graphic. The table shows the number of entries on which the scores are based.



Metric	Whole archive (#Entries)	Similar resolution (#Entries, resolution range(Å))
R_{free}	66092	3684 (1.90-1.90)
Clashscore	79885	4465 (1.90-1.90)
Ramachandran outliers	78287	4413 (1.90-1.90)
Sidechain outliers	78261	4414 (1.90-1.90)
RSRZ outliers	66119	3686 (1.90-1.90)

The table below summarises the geometric issues observed across the polymeric chains and their fit to the electron density. The red, orange, yellow and green segments on the lower bar indicate the fraction of residues that contain outliers for ≥ 3 , 2, 1 and 0 types of geometric quality criteria. The upper red bar (where present) indicates the fraction of residues that have poor fit to the electron density.

Mol	Chain	Length	Quality of chain
1	A	346	
1	B	346	

The following table lists non-polymeric compounds that are outliers for geometric or electron-density-fit criteria:

Mol	Type	Chain	Res	Geometry	Electron density
3	PDN	A	946	-	X
3	PDN	B	945	-	X

2 Entry composition

There are 4 unique types of molecules in this entry. The entry contains 6018 atoms, of which 0 are hydrogen and 0 are deuterium.

In the tables below, the ZeroOcc column contains the number of atoms modelled with zero occupancy, the AltConf column contains the number of residues with at least one atom in alternate conformation and the Trace column contains the number of residues modelled with at most 2 atoms.

- Molecule 1 is a protein called 3-oxo-5-beta-steroid 4-dehydrogenase.

Mol	Chain	Residues	Atoms					ZeroOcc	AltConf	Trace
1	A	325	Total	C	N	O	S	0	0	0
			2627	1680	455	481	11			
1	B	325	Total	C	N	O	S	0	0	0
			2627	1680	455	481	11			

There are 40 discrepancies between the modelled and reference sequences:

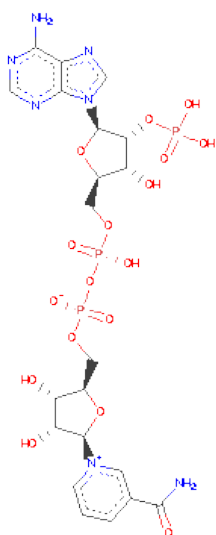
Chain	Residue	Modelled	Actual	Comment	Reference
A	-19	MET	-	EXPRESSION TAG	UNP P51857
A	-18	GLY	-	EXPRESSION TAG	UNP P51857
A	-17	SER	-	EXPRESSION TAG	UNP P51857
A	-16	SER	-	EXPRESSION TAG	UNP P51857
A	-15	HIS	-	EXPRESSION TAG	UNP P51857
A	-14	HIS	-	EXPRESSION TAG	UNP P51857
A	-13	HIS	-	EXPRESSION TAG	UNP P51857
A	-12	HIS	-	EXPRESSION TAG	UNP P51857
A	-11	HIS	-	EXPRESSION TAG	UNP P51857
A	-10	HIS	-	EXPRESSION TAG	UNP P51857
A	-9	SER	-	EXPRESSION TAG	UNP P51857
A	-8	SER	-	EXPRESSION TAG	UNP P51857
A	-7	GLY	-	EXPRESSION TAG	UNP P51857
A	-6	LEU	-	EXPRESSION TAG	UNP P51857
A	-5	VAL	-	EXPRESSION TAG	UNP P51857
A	-4	PRO	-	EXPRESSION TAG	UNP P51857
A	-3	ARG	-	EXPRESSION TAG	UNP P51857
A	-2	GLY	-	EXPRESSION TAG	UNP P51857
A	-1	SER	-	EXPRESSION TAG	UNP P51857
A	0	HIS	-	EXPRESSION TAG	UNP P51857
B	-19	MET	-	EXPRESSION TAG	UNP P51857
B	-18	GLY	-	EXPRESSION TAG	UNP P51857
B	-17	SER	-	EXPRESSION TAG	UNP P51857
B	-16	SER	-	EXPRESSION TAG	UNP P51857
B	-15	HIS	-	EXPRESSION TAG	UNP P51857

Continued on next page...

Continued from previous page...

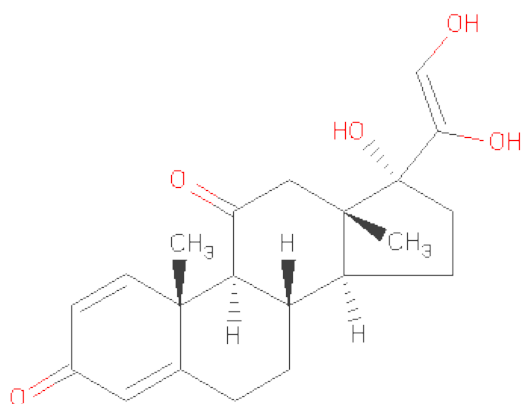
Chain	Residue	Modelled	Actual	Comment	Reference
B	-14	HIS	-	EXPRESSION TAG	UNP P51857
B	-13	HIS	-	EXPRESSION TAG	UNP P51857
B	-12	HIS	-	EXPRESSION TAG	UNP P51857
B	-11	HIS	-	EXPRESSION TAG	UNP P51857
B	-10	HIS	-	EXPRESSION TAG	UNP P51857
B	-9	SER	-	EXPRESSION TAG	UNP P51857
B	-8	SER	-	EXPRESSION TAG	UNP P51857
B	-7	GLY	-	EXPRESSION TAG	UNP P51857
B	-6	LEU	-	EXPRESSION TAG	UNP P51857
B	-5	VAL	-	EXPRESSION TAG	UNP P51857
B	-4	PRO	-	EXPRESSION TAG	UNP P51857
B	-3	ARG	-	EXPRESSION TAG	UNP P51857
B	-2	GLY	-	EXPRESSION TAG	UNP P51857
B	-1	SER	-	EXPRESSION TAG	UNP P51857
B	0	HIS	-	EXPRESSION TAG	UNP P51857

- Molecule 2 is NADP NICOTINAMIDE-ADENINE-DINUCLEOTIDEPHOSPHATE (three-letter code: NAP) (formula: $C_{21}H_{28}N_7O_{17}P_3$).



Mol	Chain	Residues	Atoms					ZeroOcc	AltConf
2	A	1	Total	C	N	O	P	0	0
			48	21	7	17	3		
2	B	1	Total	C	N	O	P	0	0
			48	21	7	17	3		

- Molecule 3 is 17,21-DIHYDROXPREGNA-1,4-DIENE-3,11,20-TRIONE (three-letter code: PDN) (formula: $C_{21}H_{26}O_5$).



Mol	Chain	Residues	Atoms			ZeroOcc	AltConf
3	A	1	Total	C	O	0	0
			26	21	5		
3	B	1	Total	C	O	0	0
			26	21	5		

- Molecule 4 is water.

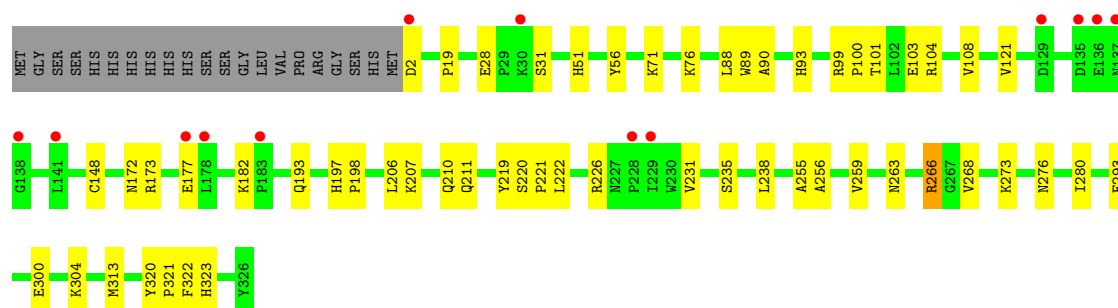
Mol	Chain	Residues	Atoms		ZeroOcc	AltConf
4	A	292	Total	O	0	0
			292	292		
4	B	324	Total	O	0	0
			324	324		

3 Residue-property plots i

These plots are drawn for all protein, RNA and DNA chains in the entry. The first graphic for a chain summarises the proportions of errors displayed in the second graphic. The second graphic shows the sequence view annotated by issues in geometry and electron density. Residues are color-coded according to the number of geometric quality criteria for which they contain at least one outlier: green = 0, yellow = 1, orange = 2 and red = 3 or more. A red dot above a residue indicates a poor fit to the electron density ($RSRZ > 2$). Stretches of 2 or more consecutive residues without any outlier are shown as a green connector. Residues present in the sample, but not in the model, are shown in grey.

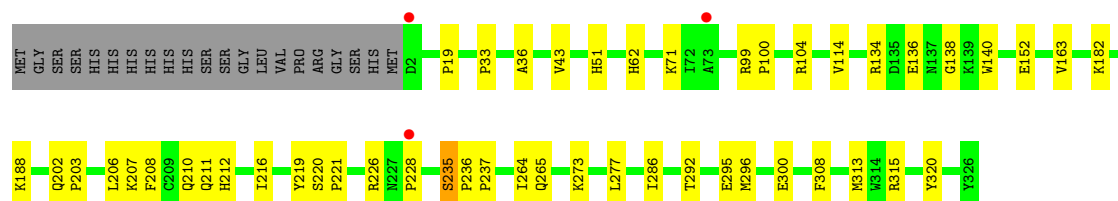
- Molecule 1: 3-oxo-5-beta-steroid 4-dehydrogenase

Chain A: 



- Molecule 1: 3-oxo-5-beta-steroid 4-dehydrogenase

Chain B: 



4 Data and refinement statistics

Property	Value	Source
Space group	P 21 21 21	Depositor
Cell constants a, b, c, α , β , γ	49.72Å 109.20Å 127.84Å 90.00° 90.00° 90.00°	Depositor
Resolution (Å)	26.11 – 1.90 26.11 – 1.90	Depositor EDS
% Data completeness (in resolution range)	88.2 (26.11-1.90) 93.6 (26.11-1.90)	Depositor EDS
R_{merge}	0.11	Depositor
R_{sym}	(Not available)	Depositor
$\langle I/\sigma(I) \rangle$ ¹	2.61 (at 1.91Å)	Xtriage
Refinement program	CNS 1.2	Depositor
R, R_{free}	0.195 , 0.223 0.202 , 0.199	Depositor DCC
R_{free} test set	2678 reflections (5.15%)	DCC
Wilson B-factor (Å ²)	14.9	Xtriage
Anisotropy	0.175	Xtriage
Bulk solvent k_{sol} (e/Å ³), B_{sol} (Å ²)	0.36 , 37.5	EDS
Estimated twinning fraction	No twinning to report.	Xtriage
L-test for twinning	$\langle L \rangle = 0.48$, $\langle L^2 \rangle = 0.32$	Xtriage
Outliers	0 of 51950 reflections	Xtriage
F_o, F_c correlation	0.93	EDS
Total number of atoms	6018	wwPDB-VP
Average B, all atoms (Å ²)	17.0	wwPDB-VP

Xtriage's analysis on translational NCS is as follows: *The largest off-origin peak in the Patterson function is 4.47% of the height of the origin peak. No significant pseudotranslation is detected.*

¹Intensities estimated from amplitudes.

5 Model quality

5.1 Standard geometry

Bond lengths and bond angles in the following residue types are not validated in this section: PDN, NAP

The Z score for a bond length (or angle) is the number of standard deviations the observed value is removed from the expected value. A bond length (or angle) with $|Z| > 5$ is considered an outlier worth inspection. RMSZ is the root-mean-square of all Z scores of the bond lengths (or angles).

Mol	Chain	Bond lengths		Bond angles	
		RMSZ	$\# Z > 5$	RMSZ	$\# Z > 5$
1	A	0.31	0/2692	0.54	0/3649
1	B	0.32	0/2692	0.56	0/3649
All	All	0.32	0/5384	0.55	0/7298

There are no bond length outliers.

There are no bond angle outliers.

There are no chirality outliers.

There are no planarity outliers.

5.2 Close contacts

In the following table, the Non-H and H(model) columns list the number of non-hydrogen atoms and hydrogen atoms in the chain respectively. The H(added) column lists the number of hydrogens added by MolProbity. The Clashes column lists the number of clashes within the asymmetric unit, and the number in parentheses is this value normalized per 1000 atoms of the molecule in the chain. The Symm-Clashes column gives symmetry related clashes, in the same way as for the Clashes column.

Mol	Chain	Non-H	H(model)	H(added)	Clashes	Symm-Clashes
1	A	2627	0	2622	37	0
1	B	2627	0	2622	30	0
2	A	48	0	25	2	0
2	B	48	0	25	1	0
3	A	26	0	25	0	0
3	B	26	0	25	0	0
4	A	292	0	0	8	0
4	B	324	0	0	2	0
All	All	6018	0	5344	67	0

Clashscore is defined as the number of clashes calculated for the entry per 1000 atoms (including hydrogens) of the entry. The overall clashscore for this entry is 6.

All (67) close contacts within the same asymmetric unit are listed below.

Atom-1	Atom-2	Distance(Å)	Clash(Å)
1:A:177:GLU:HG2	4:A:1083:HOH:O	1.87	0.73
1:A:304:LYS:HD2	4:A:964:HOH:O	1.92	0.69
1:B:207:LYS:O	1:B:211:GLN:HG3	1.92	0.69
1:A:263:ASN:O	1:A:266:ARG:HG2	1.96	0.66
1:B:134:ARG:HD3	1:B:140:TRP:CE2	2.34	0.62
1:B:152:GLU:HG3	1:B:182:LYS:HE3	1.82	0.61
1:B:292:THR:OG1	1:B:295:GLU:HG3	2.01	0.60
1:B:273:LYS:HD3	1:B:273:LYS:C	2.22	0.59
1:B:226:ARG:O	1:B:228:PRO:HD3	2.02	0.59
1:A:235:SER:HB3	4:A:964:HOH:O	2.03	0.59
1:A:104:ARG:HD2	4:A:1161:HOH:O	2.04	0.57
1:B:208:PHE:CE1	1:B:212:HIS:CE1	2.93	0.57
1:B:206:LEU:O	1:B:210:GLN:HG3	2.06	0.56
1:A:256:ALA:O	1:A:259:VAL:HG22	2.06	0.56
1:B:188:LYS:HE2	4:B:999:HOH:O	2.06	0.55
1:B:99:ARG:HB3	1:B:100:PRO:HD3	1.88	0.55
1:A:276:ASN:O	1:A:280:ILE:HG13	2.08	0.54
1:A:148:CYS:SG	1:A:182:LYS:HG3	2.48	0.54
1:A:293:GLU:HG3	4:A:1166:HOH:O	2.08	0.53
1:A:273:LYS:HD3	1:A:273:LYS:C	2.29	0.52
1:A:99:ARG:HB3	1:A:100:PRO:HD3	1.92	0.51
1:B:296:MET:O	1:B:300:GLU:HG3	2.11	0.51
1:A:226:ARG:HA	1:A:231:VAL:HG11	1.93	0.51
1:A:2:ASP:HB3	4:A:1137:HOH:O	2.09	0.50
1:A:255:ALA:O	1:A:259:VAL:HG13	2.11	0.50
1:B:114:VAL:HG23	1:B:163:VAL:HG23	1.94	0.50
1:A:99:ARG:O	1:A:103:GLU:HG3	2.12	0.49
1:A:220:SER:N	1:A:221:PRO:CD	2.76	0.49
1:A:104:ARG:O	1:A:108:VAL:HG23	2.12	0.48
1:A:28:GLU:HB3	1:A:31:SER:OG	2.13	0.48
1:B:19:PRO:HB2	1:B:51:HIS:HB2	1.96	0.48
1:B:202:GLN:N	1:B:203:PRO:HD3	2.28	0.48
1:B:62:HIS:HE1	4:B:1051:HOH:O	1.96	0.48
1:B:43:VAL:HG11	1:B:277:LEU:HD12	1.96	0.47
1:A:19:PRO:HB2	1:A:51:HIS:HB2	1.96	0.47
1:B:264:ILE:HD13	1:B:286:ILE:HD12	1.96	0.47
1:A:88:LEU:HD12	1:A:101:THR:HG21	1.98	0.46
1:A:172:ASN:HD22	1:A:321:PRO:HA	1.81	0.46
1:B:220:SER:N	1:B:221:PRO:CD	2.78	0.46

Continued on next page...

Continued from previous page...

Atom-1	Atom-2	Distance(Å)	Clash(Å)
1:A:71:LYS:HA	1:A:71:LYS:HD3	1.75	0.45
1:B:206:LEU:HA	1:B:216:ILE:HD12	1.98	0.45
1:B:235:SER:HB3	1:B:308:PHE:CE2	2.52	0.45
1:A:206:LEU:O	1:A:210:GLN:HG3	2.16	0.45
1:A:197:HIS:HB2	1:A:198:PRO:HD2	2.00	0.44
4:A:1062:HOH:O	1:B:104:ARG:HD2	2.18	0.44
1:A:266:ARG:HG3	1:A:268:VAL:HG23	1.99	0.44
1:A:197:HIS:HB2	1:A:198:PRO:CD	2.47	0.44
1:A:56:TYR:CE1	1:A:104:ARG:HD3	2.53	0.43
1:B:71:LYS:HA	1:B:71:LYS:HD3	1.84	0.43
1:B:315:ARG:HA	1:B:320:TYR:CD2	2.54	0.43
1:B:208:PHE:CE1	1:B:212:HIS:HE1	2.36	0.43
1:A:320:TYR:CE2	1:A:322:PHE:HB2	2.53	0.43
1:B:273:LYS:O	2:B:943:NAP:H8A	2.19	0.43
1:A:207:LYS:O	1:A:211:GLN:HG3	2.19	0.43
1:A:93:HIS:HE1	1:A:121:VAL:O	2.01	0.43
1:B:188:LYS:NZ	1:B:188:LYS:HB3	2.33	0.43
1:B:264:ILE:HG13	1:B:265:GLN:N	2.35	0.42
1:A:273:LYS:O	2:A:944:NAP:H8A	2.19	0.42
1:A:193:GLN:OE1	2:A:944:NAP:H2N	2.19	0.42
1:B:134:ARG:HD2	1:B:138:GLY:O	2.20	0.42
1:A:320:TYR:CZ	1:A:322:PHE:HB2	2.55	0.42
1:A:320:TYR:HD2	1:A:323:HIS:CD2	2.38	0.41
1:A:76:LYS:HE2	4:A:1147:HOH:O	2.20	0.41
1:B:33:PRO:HG2	1:B:36:ALA:HB2	2.04	0.40
1:A:89:TRP:CG	1:A:90:ALA:N	2.90	0.40
1:B:236:PRO:HA	1:B:237:PRO:HD3	1.96	0.40
1:A:222:LEU:C	1:A:238:LEU:HD23	2.42	0.40

There are no symmetry-related clashes.

5.3 Torsion angles

5.3.1 Protein backbone ⓘ

In the following table, the Percentiles column shows the percent Ramachandran outliers of the chain as a percentile score with respect to all X-ray entries followed by that with respect to entries of similar resolution. The Analysed column shows the number of residues for which the backbone conformation was analysed, and the total number of residues.

Mol	Chain	Analysed	Favoured	Allowed	Outliers	Percentiles	
1	A	323/346 (93%)	310 (96%)	13 (4%)	0	100	100

Continued on next page...

Continued from previous page...

Mol	Chain	Analysed	Favoured	Allowed	Outliers	Percentiles	
1	B	323/346 (93%)	309 (96%)	14 (4%)	0	100	100
All	All	646/692 (93%)	619 (96%)	27 (4%)	0	100	100

There are no Ramachandran outliers to report.

5.3.2 Protein sidechains ⓘ

In the following table, the Percentiles column shows the percent sidechain outliers of the chain as a percentile score with respect to all X-ray entries followed by that with respect to entries of similar resolution. The Analysed column shows the number of residues for which the sidechain conformation was analysed, and the total number of residues.

Mol	Chain	Analysed	Rotameric	Outliers	Percentiles	
1	A	289/307 (94%)	284 (98%)	5 (2%)	73	68
1	B	289/307 (94%)	285 (99%)	4 (1%)	78	75
All	All	578/614 (94%)	569 (98%)	9 (2%)	75	70

All (9) residues with a non-rotameric sidechain are listed below:

Mol	Chain	Res	Type
1	A	173	ARG
1	A	219	TYR
1	A	266	ARG
1	A	300	GLU
1	A	313	MET
1	B	136	GLU
1	B	219	TYR
1	B	235	SER
1	B	313	MET

Some sidechains can be flipped to improve hydrogen bonding and reduce clashes. All (9) such sidechains are listed below:

Mol	Chain	Res	Type
1	A	92	ASN
1	A	110	GLN
1	A	211	GLN
1	A	305	ASN
1	B	16	ASN
1	B	62	HIS

Continued on next page...

Continued from previous page...

Mol	Chain	Res	Type
1	B	143	HIS
1	B	212	HIS
1	B	303	ASN

5.3.3 RNA ⓘ

There are no RNA chains in this entry.

5.4 Non-standard residues in protein, DNA, RNA chains ⓘ

There are no non-standard protein/DNA/RNA residues in this entry.

5.5 Carbohydrates ⓘ

There are no carbohydrates in this entry.

5.6 Ligand geometry ⓘ

4 ligands are modelled in this entry.

In the following table, the Counts columns list the number of bonds (or angles) for which Mogul statistics could be retrieved, the number of bonds (or angles) that are observed in the model and the number of bonds (or angles) that are defined in the chemical component dictionary. The Link column lists molecule types, if any, to which the group is linked. The Z score for a bond length (or angle) is the number of standard deviations the observed value is removed from the expected value. A bond length (or angle) with $|Z| > 2$ is considered an outlier worth inspection. RMSZ is the root-mean-square of all Z scores of the bond lengths (or angles).

Mol	Type	Chain	Res	Link	Bond lengths			Bond angles		
					Counts	RMSZ	$\# Z > 2$	Counts	RMSZ	$\# Z > 2$
2	NAP	A	944	-	52,52,52	2.42	16 (30%)	80,80,80	2.33	22 (27%)
3	PDN	A	946	-	29,29,29	4.61	13 (44%)	45,48,48	2.37	11 (24%)
2	NAP	B	943	-	52,52,52	2.50	18 (34%)	80,80,80	2.31	21 (26%)
3	PDN	B	945	-	29,29,29	4.63	13 (44%)	45,48,48	2.39	12 (26%)

In the following table, the Chirals column lists the number of chiral outliers, the number of chiral centers analysed, the number of these observed in the model and the number defined in the chemical component dictionary. Similar counts are reported in the Torsion and Rings columns. '-' means no outliers of that kind were identified.

Mol	Type	Chain	Res	Link	Chirals	Torsions	Rings
2	NAP	A	944	-	-	0/35/67/67	0/3/5/5
3	PDN	A	946	-	-	0/0/73/73	0/0/4/4
2	NAP	B	943	-	-	0/35/67/67	0/3/5/5
3	PDN	B	945	-	-	0/0/73/73	0/0/4/4

All (60) bond length outliers are listed below:

Mol	Chain	Res	Type	Atoms	Z	Observed(Å)	Ideal(Å)
3	B	945	PDN	C2-C1	14.62	1.59	1.33
3	A	946	PDN	C2-C1	14.32	1.59	1.33
3	B	945	PDN	C21-C20	11.80	1.53	1.32
3	A	946	PDN	C21-C20	11.69	1.53	1.32
3	A	946	PDN	C17-C20	8.04	1.60	1.50
3	B	945	PDN	C17-C20	7.83	1.60	1.50
3	A	946	PDN	C7-C6	6.74	1.69	1.52
3	A	946	PDN	O4-C20	-6.66	1.18	1.31
2	B	943	NAP	C4A-N3A	6.66	1.45	1.35
3	B	945	PDN	C7-C6	6.64	1.68	1.52
3	B	945	PDN	O4-C20	-6.63	1.18	1.31
2	A	944	NAP	C4A-N3A	6.63	1.45	1.35
2	B	943	NAP	C2N-N1N	5.97	1.43	1.35
2	A	944	NAP	C2N-N1N	5.49	1.42	1.35
2	B	943	NAP	C6N-N1N	5.32	1.50	1.35
2	A	944	NAP	C6N-N1N	5.28	1.50	1.35
2	B	943	NAP	O5B-C5B	-4.74	1.25	1.44
2	A	944	NAP	O5B-C5B	-4.63	1.25	1.44
3	B	945	PDN	C7-C8	-4.42	1.45	1.53
3	A	946	PDN	C7-C8	-4.35	1.45	1.53
2	A	944	NAP	C4A-N9A	-4.32	1.31	1.37
2	B	943	NAP	C4N-C3N	4.28	1.46	1.39
2	A	944	NAP	PN-O5D	-4.22	1.46	1.60
3	B	945	PDN	C10-C5	4.21	1.56	1.51
2	B	943	NAP	PN-O3	-4.17	1.51	1.60
3	A	946	PDN	C10-C5	4.17	1.56	1.51
2	B	943	NAP	C2N-C3N	4.07	1.44	1.38
2	A	944	NAP	PN-O3	-4.06	1.52	1.60
3	A	946	PDN	C10-C1	4.02	1.55	1.50
2	B	943	NAP	PN-O5D	-4.02	1.47	1.60
3	B	945	PDN	C10-C9	3.99	1.61	1.57
3	B	945	PDN	C10-C1	3.97	1.55	1.50
2	A	944	NAP	C4N-C3N	3.96	1.46	1.39
3	A	946	PDN	C10-C9	3.95	1.61	1.57
2	B	943	NAP	PN-O1N	-3.87	1.39	1.48

Continued on next page...

Continued from previous page...

Mol	Chain	Res	Type	Atoms	Z	Observed(Å)	Ideal(Å)
2	B	943	NAP	C4A-N9A	-3.84	1.32	1.37
2	A	944	NAP	C2N-C3N	3.84	1.44	1.38
3	A	946	PDN	O5-C21	3.62	1.45	1.33
3	B	945	PDN	O5-C21	3.54	1.45	1.33
2	A	944	NAP	PN-O1N	-3.40	1.40	1.48
2	B	943	NAP	C5N-C4N	3.34	1.46	1.39
2	A	944	NAP	C5N-C4N	3.23	1.46	1.39
2	A	944	NAP	PA-O1A	-2.89	1.40	1.51
2	B	943	NAP	PA-O1A	-2.85	1.40	1.51
2	B	943	NAP	C2A-N1A	2.67	1.39	1.33
2	B	943	NAP	O4B-C1B	2.66	1.45	1.41
2	A	944	NAP	C2A-N1A	2.65	1.39	1.33
2	A	944	NAP	O4B-C1B	2.62	1.45	1.41
3	A	946	PDN	C9-C11	2.59	1.56	1.52
2	B	943	NAP	C8A-N7A	2.57	1.39	1.34
3	A	946	PDN	C17-C13	2.43	1.60	1.57
3	B	945	PDN	C9-C11	2.42	1.56	1.52
2	B	943	NAP	O4D-C1D	2.32	1.44	1.41
2	A	944	NAP	C8A-N7A	2.29	1.39	1.34
3	B	945	PDN	C17-C13	2.29	1.60	1.57
3	B	945	PDN	C12-C13	2.29	1.57	1.54
2	B	943	NAP	O3D-C3D	2.16	1.48	1.43
3	A	946	PDN	C12-C13	2.11	1.57	1.54
2	B	943	NAP	C3D-C4D	2.10	1.58	1.53
2	A	944	NAP	C3N-C7N	2.02	1.54	1.50

All (66) bond angle outliers are listed below:

Mol	Chain	Res	Type	Atoms	Z	Observed(°)	Ideal(°)
2	B	943	NAP	N3A-C2A-N1A	-11.78	118.86	128.71
2	A	944	NAP	N3A-C2A-N1A	-11.30	119.26	128.71
3	A	946	PDN	C12-C13-C17	7.60	120.12	116.11
3	B	945	PDN	C1-C2-C3	-7.40	115.28	121.45
3	B	945	PDN	C12-C13-C17	7.28	119.95	116.11
3	A	946	PDN	C1-C2-C3	-7.08	115.55	121.45
3	B	945	PDN	C10-C1-C2	-6.50	116.42	124.38
3	A	946	PDN	C10-C1-C2	-6.07	116.94	124.38
2	A	944	NAP	C3N-C7N-N7N	-5.37	111.66	117.77
2	B	943	NAP	C3N-C7N-N7N	-5.37	111.66	117.77
2	A	944	NAP	PN-O3-PA	5.01	154.47	132.95
2	B	943	NAP	PN-O3-PA	4.99	154.36	132.95
2	A	944	NAP	PN-O5D-C5D	4.92	137.24	120.24

Continued on next page...

Continued from previous page...

Mol	Chain	Res	Type	Atoms	Z	Observed(°)	Ideal(°)
2	B	943	NAP	PN-O5D-C5D	4.89	137.14	120.24
3	B	945	PDN	C2-C3-C4	4.29	121.72	117.12
2	B	943	NAP	O7N-C7N-N7N	4.25	128.73	122.59
2	A	944	NAP	O7N-C7N-N7N	4.21	128.68	122.59
2	A	944	NAP	O4D-C1D-N1N	-4.19	103.67	107.95
2	A	944	NAP	C4B-O4B-C1B	4.08	114.18	109.75
3	A	946	PDN	C2-C3-C4	4.04	121.45	117.12
3	A	946	PDN	C17-C13-C14	-4.01	95.79	99.71
3	A	946	PDN	C7-C8-C14	-3.82	105.49	112.00
3	B	945	PDN	C7-C8-C14	-3.78	105.56	112.00
2	B	943	NAP	O4D-C1D-N1N	-3.65	104.22	107.95
3	B	945	PDN	C17-C13-C14	-3.65	96.15	99.71
2	A	944	NAP	O4B-C1B-C2B	-3.56	103.62	106.95
2	A	944	NAP	C5A-C6A-N6A	3.45	128.51	120.72
2	B	943	NAP	C4B-O4B-C1B	3.44	113.49	109.75
2	A	944	NAP	N3A-C4A-N9A	3.36	131.49	125.43
2	B	943	NAP	O4B-C1B-C2B	-3.31	103.86	106.95
2	B	943	NAP	N3A-C4A-N9A	3.30	131.40	125.43
2	B	943	NAP	C5A-C6A-N6A	3.21	127.98	120.72
2	A	944	NAP	C2D-C1D-N1N	3.01	118.95	113.86
2	B	943	NAP	O4D-C4D-C3D	-2.99	99.11	105.17
2	A	944	NAP	O3D-C3D-C2D	2.88	121.21	111.83
3	B	945	PDN	C8-C9-C11	-2.88	106.57	111.04
2	B	943	NAP	C2D-C1D-N1N	2.87	118.71	113.86
3	A	946	PDN	C8-C9-C11	-2.80	106.69	111.04
2	A	944	NAP	O4D-C4D-C3D	-2.80	99.50	105.17
2	A	944	NAP	O4B-C1B-N9A	-2.72	105.91	108.44
2	B	943	NAP	C2A-N1A-C6A	2.70	123.65	118.77
2	B	943	NAP	O2D-C2D-C1D	2.68	119.35	111.23
2	A	944	NAP	C2A-N1A-C6A	2.63	123.53	118.77
2	A	944	NAP	C6N-N1N-C2N	-2.63	119.07	122.04
3	A	946	PDN	C18-C13-C17	2.62	111.86	109.14
2	B	943	NAP	C4A-C5A-N7A	2.57	111.72	109.52
3	B	945	PDN	C18-C13-C17	2.50	111.73	109.14
2	A	944	NAP	C4A-C5A-N7A	2.50	111.66	109.52
2	A	944	NAP	O5D-C5D-C4D	2.46	117.95	108.94
2	B	943	NAP	C6A-C5A-C4A	2.44	121.73	117.25
3	B	945	PDN	C10-C5-C4	2.44	124.03	122.29
3	A	946	PDN	C10-C5-C4	2.44	124.02	122.29
2	B	943	NAP	C6N-N1N-C2N	-2.40	119.32	122.04
2	B	943	NAP	O3D-C3D-C2D	2.37	119.53	111.83
2	A	944	NAP	C6A-C5A-C4A	2.35	121.55	117.25

Continued on next page...

Continued from previous page...

Mol	Chain	Res	Type	Atoms	Z	Observed(°)	Ideal(°)
2	B	943	NAP	C5A-C4A-N3A	-2.28	120.73	125.70
2	A	944	NAP	C5A-C4A-N3A	-2.28	120.74	125.70
2	B	943	NAP	O5D-C5D-C4D	2.27	117.26	108.94
3	A	946	PDN	C15-C14-C8	-2.26	115.43	119.03
3	B	945	PDN	C15-C14-C8	-2.22	115.50	119.03
2	A	944	NAP	C6N-C5N-C4N	-2.17	115.98	119.44
3	B	945	PDN	C9-C10-C1	-2.13	106.75	110.17
2	A	944	NAP	O2D-C2D-C1D	2.11	117.60	111.23
3	B	945	PDN	C9-C8-C14	2.10	111.71	109.22
2	B	943	NAP	C6N-C5N-C4N	-2.09	116.12	119.44
3	A	946	PDN	C9-C10-C1	-2.07	106.86	110.17

There are no chirality outliers.

There are no torsion outliers.

There are no ring outliers.

5.7 Other polymers ⓘ

There are no such residues in this entry.

5.8 Polymer linkage issues

There are no chain breaks in this entry.

6 Fit of model and data ⓘ

6.1 Protein, DNA and RNA chains ⓘ

In the following table, the column labelled ‘#RSRZ> 2’ contains the number (and percentage) of RSRZ outliers, followed by percent RSRZ outliers for the chain as percentile scores relative to all X-ray entries and entries of similar resolution. The OWAB column contains the minimum, median, 95th percentile and maximum values of the occupancy-weighted average B-factor per residue. The column labelled ‘Q< 0.9’ lists the number of (and percentage) of residues with an average occupancy less than 0.9.

Mol	Chain	Analysed	<RSRZ>	#RSRZ>2	OWAB(Å ²)	Q<0.9
1	A	325/346 (93%)	0.27	13 (4%) 36 37	5, 15, 35, 63	0
1	B	325/346 (93%)	-0.01	3 (0%) 81 83	5, 12, 25, 36	0
All	All	650/692 (93%)	0.13	16 (2%) 53 56	5, 13, 31, 63	0

All (16) RSRZ outliers are listed below:

Mol	Chain	Res	Type	RSRZ
1	A	138	GLY	3.8
1	A	136	GLU	3.6
1	A	30	LYS	3.5
1	B	228	PRO	3.3
1	A	2	ASP	3.2
1	A	129	ASP	3.1
1	B	2	ASP	2.6
1	A	137	ASN	2.6
1	A	229	ILE	2.6
1	A	135	ASP	2.5
1	B	73	ALA	2.4
1	A	228	PRO	2.3
1	A	141	LEU	2.3
1	A	183	PRO	2.1
1	A	177	GLU	2.1
1	A	178	LEU	2.0

6.2 Non-standard residues in protein, DNA, RNA chains ⓘ

There are no non-standard protein/DNA/RNA residues in this entry.

6.3 Carbohydrates ⓘ

There are no carbohydrates in this entry.

6.4 Ligands ⓘ

In the following table, the Atoms column lists the number of modelled atoms in the group and the number defined in the chemical component dictionary. LLDF column lists the quality of electron density of the group with respect to its neighbouring residues in protein, DNA or RNA chains. The B-factors column lists the minimum, median, 95th percentile and maximum values of B factors of atoms in the group. The column labelled 'Q< 0.9' lists the number of atoms with occupancy less than 0.9.

Mol	Type	Chain	Res	Atoms	RSR	LLDF	B-factors(Å ²)	Q<0.9
3	PDN	B	945	26/26	0.26	5.33	28,36,37,39	0
3	PDN	A	946	26/26	0.33	4.01	41,47,49,50	0
2	NAP	A	944	48/48	0.10	-0.33	5,11,13,14	0
2	NAP	B	943	48/48	0.09	-0.64	4,9,10,12	0

6.5 Other polymers ⓘ

There are no such residues in this entry.