



Full wwPDB X-ray Structure Validation Report ⓘ

Feb 28, 2014 – 10:53 AM GMT

PDB ID : 3CS9
Title : Human ABL kinase in complex with nilotinib
Authors : Cowan-Jacob, S.W.; Fendrich, G.; Manley, P.; Liebetanz, J.; Fabbro, D.
Deposited on : 2008-04-09
Resolution : 2.21 Å(reported)

This is a full wwPDB validation report for a publicly released PDB entry.
We welcome your comments at validation@mail.wwpdb.org
A user guide is available at <http://wwpdb.org/ValidationPDFNotes.html>

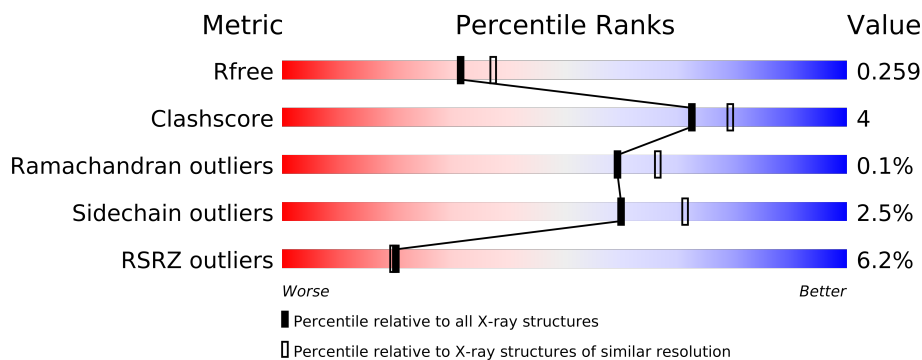
The following versions of software and data (see [references](#)) were used in the production of this report:

MolProbity : 4.02b-467
Mogul : 1.15 2013
Xtriage (Phenix) : dev-1323
EDS : stable22639
Percentile statistics : 21963
Refmac : 5.8.0049
CCP4 : 6.3.0 (Settle)
Ideal geometry (proteins) : Engh & Huber (2001)
Ideal geometry (DNA, RNA) : Parkinson et. al. (1996)
Validation Pipeline (wwPDB-VP) : stable22683

1 Overall quality at a glance

The reported resolution of this entry is 2.21 Å.

Percentile scores (ranging between 0-100) for global validation metrics of the entry are shown in the following graphic. The table shows the number of entries on which the scores are based.



Metric	Whole archive (#Entries)	Similar resolution (#Entries, resolution range(Å))
R_{free}	66092	3340 (2.24-2.20)
Clashscore	79885	4208 (2.24-2.20)
Ramachandran outliers	78287	4135 (2.24-2.20)
Sidechain outliers	78261	4136 (2.24-2.20)
RSRZ outliers	66119	3341 (2.24-2.20)

The table below summarises the geometric issues observed across the polymeric chains and their fit to the electron density. The red, orange, yellow and green segments on the lower bar indicate the fraction of residues that contain outliers for ≥ 3 , 2, 1 and 0 types of geometric quality criteria. The upper red bar (where present) indicates the fraction of residues that have poor fit to the electron density.

Mol	Chain	Length	Quality of chain
1	A	277	
1	B	277	
1	C	277	
1	D	277	

2 Entry composition

There are 3 unique types of molecules in this entry. The entry contains 8696 atoms, of which 0 are hydrogen and 0 are deuterium.

In the tables below, the ZeroOcc column contains the number of atoms modelled with zero occupancy, the AltConf column contains the number of residues with at least one atom in alternate conformation and the Trace column contains the number of residues modelled with at most 2 atoms.

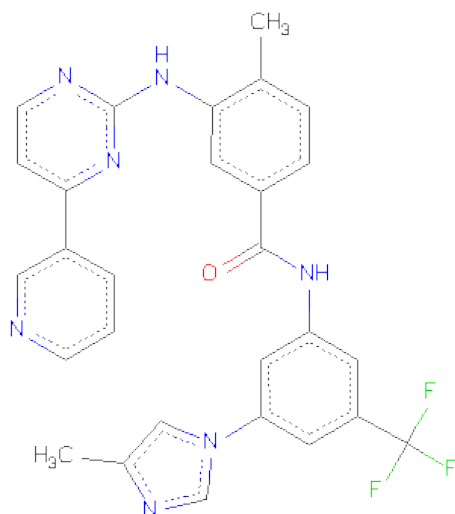
- Molecule 1 is a protein called Proto-oncogene tyrosine-protein kinase ABL1.

Mol	Chain	Residues	Atoms					ZeroOcc	AltConf	Trace
1	A	264	Total	C	N	O	S	0	0	0
			2142	1383	351	392	16			
1	B	247	Total	C	N	O	S	0	2	0
			2033	1315	328	374	16			
1	C	243	Total	C	N	O	S	0	0	0
			1984	1287	323	359	15			
1	D	263	Total	C	N	O	S	0	0	0
			2115	1363	343	392	17			

There are 20 discrepancies between the modelled and reference sequences:

Chain	Residue	Modelled	Actual	Comment	Reference
A	224	GLY	-	EXPRESSION TAG	UNP P00519
A	225	ALA	-	EXPRESSION TAG	UNP P00519
A	226	MET	-	EXPRESSION TAG	UNP P00519
A	227	ASP	-	EXPRESSION TAG	UNP P00519
A	228	PRO	-	EXPRESSION TAG	UNP P00519
B	224	GLY	-	EXPRESSION TAG	UNP P00519
B	225	ALA	-	EXPRESSION TAG	UNP P00519
B	226	MET	-	EXPRESSION TAG	UNP P00519
B	227	ASP	-	EXPRESSION TAG	UNP P00519
B	228	PRO	-	EXPRESSION TAG	UNP P00519
C	224	GLY	-	EXPRESSION TAG	UNP P00519
C	225	ALA	-	EXPRESSION TAG	UNP P00519
C	226	MET	-	EXPRESSION TAG	UNP P00519
C	227	ASP	-	EXPRESSION TAG	UNP P00519
C	228	PRO	-	EXPRESSION TAG	UNP P00519
D	224	GLY	-	EXPRESSION TAG	UNP P00519
D	225	ALA	-	EXPRESSION TAG	UNP P00519
D	226	MET	-	EXPRESSION TAG	UNP P00519
D	227	ASP	-	EXPRESSION TAG	UNP P00519
D	228	PRO	-	EXPRESSION TAG	UNP P00519

- Molecule 2 is NILOTINIB (three-letter code: NIL) (formula: $C_{28}H_{22}F_3N_7O$).



Mol	Chain	Residues	Atoms					ZeroOcc	AltConf
2	A	1	Total	C	F	N	O	0	0
			39	28	3	7	1		
2	B	1	Total	C	F	N	O	0	0
			39	28	3	7	1		
2	C	1	Total	C	F	N	O	0	0
			39	28	3	7	1		
2	D	1	Total	C	F	N	O	0	0
			39	28	3	7	1		

- Molecule 3 is water.

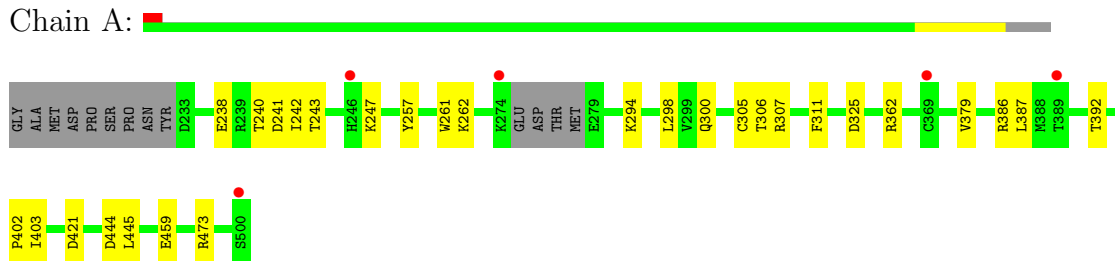
Mol	Chain	Residues	Atoms		ZeroOcc	AltConf
3	A	99	Total	O	0	0
			99	99		
3	B	79	Total	O	0	0
			79	79		
3	C	63	Total	O	0	0
			63	63		
3	D	25	Total	O	0	0
			25	25		

3 Residue-property plots

These plots are drawn for all protein, RNA and DNA chains in the entry. The first graphic for a chain summarises the proportions of errors displayed in the second graphic. The second graphic shows the sequence view annotated by issues in geometry and electron density. Residues are color-coded according to the number of geometric quality criteria for which they contain at least one outlier: green = 0, yellow = 1, orange = 2 and red = 3 or more. A red dot above a residue indicates a poor fit to the electron density ($RSRZ > 2$). Stretches of 2 or more consecutive residues without any outlier are shown as a green connector. Residues present in the sample, but not in the model, are shown in grey.

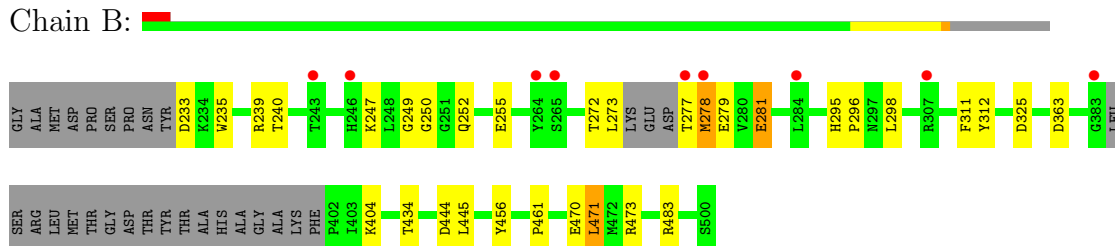
- Molecule 1: Proto-oncogene tyrosine-protein kinase ABL1

Chain A:



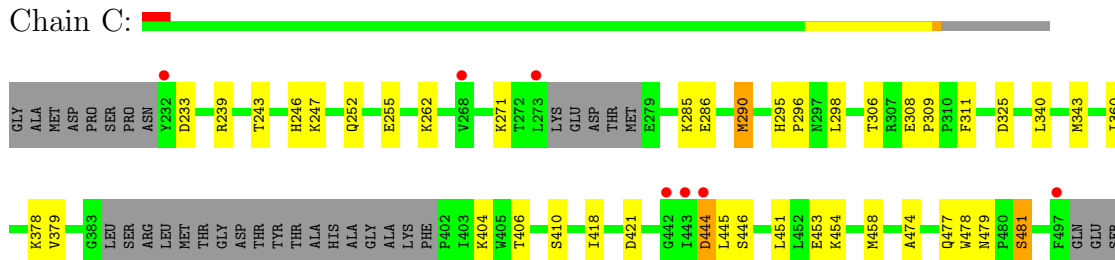
- Molecule 1: Proto-oncogene tyrosine-protein kinase ABL1

Chain B:



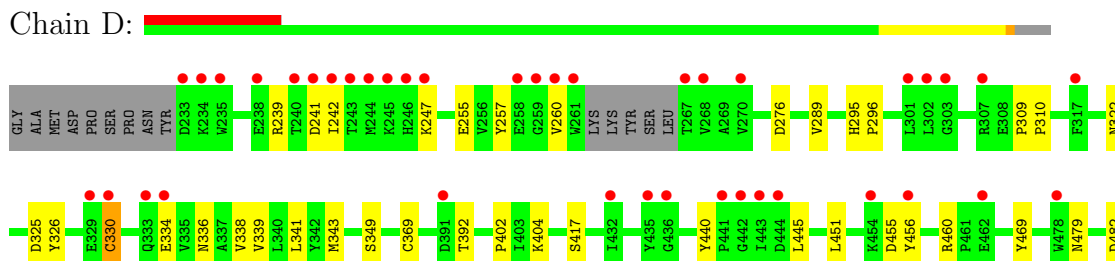
- Molecule 1: Proto-oncogene tyrosine-protein kinase ABL1

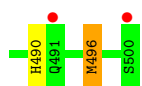
Chain C:



- Molecule 1: Proto-oncogene tyrosine-protein kinase ABL1

Chain D:





4 Data and refinement statistics

Property	Value	Source
Space group	P 21 21 21	Depositor
Cell constants a, b, c, α , β , γ	93.93Å 118.09Å 123.68Å 90.00° 90.00° 90.00°	Depositor
Resolution (Å)	40.00 – 2.21 37.40 – 2.21	Depositor EDS
% Data completeness (in resolution range)	98.6 (40.00-2.21) 98.6 (37.40-2.21)	Depositor EDS
R_{merge}	0.06	Depositor
R_{sym}	(Not available)	Depositor
$\langle I/\sigma(I) \rangle$ ¹	3.58 (at 2.20Å)	Xtriage
Refinement program	REFMAC 5.1.9999	Depositor
R, R_{free}	0.197 , 0.242 0.217 , 0.259	Depositor DCC
R_{free} test set	3478 reflections (5.05%)	DCC
Wilson B-factor (Å ²)	39.6	Xtriage
Anisotropy	0.083	Xtriage
Bulk solvent k_{sol} (e/Å ³), B_{sol} (Å ²)	0.38 , 46.6	EDS
Estimated twinning fraction	0.013 for -h,l,k	Xtriage
L-test for twinning	$\langle L \rangle = 0.49$, $\langle L^2 \rangle = 0.33$	Xtriage
Outliers	0 of 68883 reflections	Xtriage
F_o, F_c correlation	0.94	EDS
Total number of atoms	8696	wwPDB-VP
Average B, all atoms (Å ²)	49.0	wwPDB-VP

Xtriage's analysis on translational NCS is as follows: *The largest off-origin peak in the Patterson function is 4.54% of the height of the origin peak. No significant pseudotranslation is detected.*

¹Intensities estimated from amplitudes.

5 Model quality

5.1 Standard geometry

Bond lengths and bond angles in the following residue types are not validated in this section:
NIL

The Z score for a bond length (or angle) is the number of standard deviations the observed value is removed from the expected value. A bond length (or angle) with $|Z| > 5$ is considered an outlier worth inspection. RMSZ is the root-mean-square of all Z scores of the bond lengths (or angles).

Mol	Chain	Bond lengths		Bond angles	
		RMSZ	$\# Z > 5$	RMSZ	$\# Z > 5$
1	A	0.94	0/2197	0.91	6/2971 (0.2%)
1	B	0.91	1/2093 (0.0%)	0.91	7/2828 (0.2%)
1	C	0.87	1/2036 (0.0%)	0.85	2/2755 (0.1%)
1	D	0.67	0/2169	0.77	2/2938 (0.1%)
All	All	0.85	2/8495 (0.0%)	0.86	17/11492 (0.1%)

All (2) bond length outliers are listed below:

Mol	Chain	Res	Type	Atoms	Z	Observed(Å)	Ideal(Å)
1	C	290	MET	SD-CE	-5.72	1.45	1.77
1	B	456	TYR	CD1-CE1	5.55	1.47	1.39

All (17) bond angle outliers are listed below:

Mol	Chain	Res	Type	Atoms	Z	Observed(°)	Ideal(°)
1	B	473	ARG	NE-CZ-NH2	-11.26	114.67	120.30
1	A	473	ARG	NE-CZ-NH2	-9.28	115.66	120.30
1	A	421	ASP	CB-CG-OD1	7.01	124.61	118.30
1	B	471	LEU	CA-CB-CG	6.67	130.63	115.30
1	D	455	ASP	CB-CG-OD2	6.59	124.23	118.30
1	B	473	ARG	NE-CZ-NH1	6.57	123.58	120.30
1	A	325	ASP	CB-CG-OD2	6.36	124.02	118.30
1	B	363	ASP	CB-CG-OD2	6.34	124.01	118.30
1	D	325	ASP	CB-CG-OD2	6.30	123.97	118.30
1	B	325	ASP	CB-CG-OD2	5.84	123.56	118.30
1	C	444	ASP	CB-CG-OD2	5.58	123.32	118.30
1	B	483	ARG	NE-CZ-NH1	5.47	123.03	120.30
1	A	362	ARG	NE-CZ-NH2	-5.32	117.64	120.30
1	A	473	ARG	NE-CZ-NH1	5.31	122.95	120.30
1	C	233	ASP	CB-CG-OD1	5.30	123.07	118.30

Continued on next page...

Continued from previous page...

Mol	Chain	Res	Type	Atoms	Z	Observed(°)	Ideal(°)
1	A	362	ARG	NE-CZ-NH1	5.07	122.83	120.30
1	B	483	ARG	NE-CZ-NH2	-5.03	117.78	120.30

There are no chirality outliers.

There are no planarity outliers.

5.2 Close contacts ⓘ

In the following table, the Non-H and H(model) columns list the number of non-hydrogen atoms and hydrogen atoms in the chain respectively. The H(added) column lists the number of hydrogens added by MolProbity. The Clashes column lists the number of clashes within the asymmetric unit, and the number in parentheses is this value normalized per 1000 atoms of the molecule in the chain. The Symm-Clashes column gives symmetry related clashes, in the same way as for the Clashes column.

Mol	Chain	Non-H	H(model)	H(added)	Clashes	Symm-Clashes
1	A	2142	0	2099	13	0
1	B	2033	0	1986	16	0
1	C	1984	0	1943	22	0
1	D	2115	0	2043	20	0
2	A	39	0	22	0	0
2	B	39	0	22	1	0
2	C	39	0	22	1	0
2	D	39	0	22	1	0
3	A	99	0	0	3	0
3	B	79	0	0	3	0
3	C	63	0	0	5	0
3	D	25	0	0	2	0
All	All	8696	0	8159	72	0

Clashscore is defined as the number of clashes calculated for the entry per 1000 atoms (including hydrogens) of the entry. The overall clashscore for this entry is 4.

All (72) close contacts within the same asymmetric unit are listed below.

Atom-1	Atom-2	Distance(Å)	Clash(Å)
1:C:454:LYS:HB2	3:C:651:HOH:O	1.85	0.76
1:C:246:HIS:HE1	3:C:656:HOH:O	1.72	0.73
1:B:404:LYS:HE3	1:B:445:LEU:HD23	1.74	0.69
1:C:243:THR:OG1	1:C:262:LYS:HD2	1.95	0.66
1:C:444:ASP:HA	3:C:622:HOH:O	1.95	0.66
1:D:239:ARG:HD2	3:D:623:HOH:O	2.00	0.60

Continued on next page...

Continued from previous page...

Atom-1	Atom-2	Distance(Å)	Clash(Å)
1:C:451:LEU:HA	3:C:651:HOH:O	2.01	0.60
1:C:340:LEU:HA	1:C:343:MET:HE2	1.85	0.58
1:D:417:SER:HB2	3:D:612:HOH:O	2.04	0.57
1:C:360:ILE:CD1	1:C:418:ILE:HG13	2.36	0.55
1:B:279:GLU:HG3	3:B:675:HOH:O	2.06	0.55
1:A:306:THR:HA	1:A:311:PHE:CD1	2.42	0.54
1:B:247:LYS:NZ	1:B:255:GLU:OE2	2.40	0.54
1:C:286:GLU:HG2	1:C:290:MET:CE	2.39	0.52
1:D:460:ARG:HA	1:D:469:TYR:CE1	2.45	0.52
1:B:281:GLU:CD	3:B:613:HOH:O	2.48	0.51
1:C:247:LYS:HE2	1:C:255:GLU:OE1	2.11	0.51
1:D:276:ASP:HB2	1:D:309:PRO:HG3	1.93	0.50
1:D:289:VAL:HG21	2:D:600:NIL:H58B	1.93	0.50
1:A:242:ILE:HD13	1:A:261:TRP:HA	1.92	0.50
1:B:249:GLY:HA3	1:B:252:GLN:HE21	1.75	0.50
1:B:249:GLY:CA	1:B:252:GLN:HE21	2.24	0.49
1:C:406:THR:HG22	1:C:410:SER:HB2	1.94	0.49
1:B:239:ARG:HG3	1:B:312:TYR:CE2	2.47	0.49
1:A:386:ARG:HB2	3:A:634:HOH:O	2.13	0.48
1:C:271:LYS:HB2	2:C:600:NIL:H27B	1.95	0.48
1:B:444:ASP:HA	3:B:672:HOH:O	2.12	0.48
1:C:252:GLN:NE2	1:C:325:ASP:OD2	2.46	0.48
2:B:600:NIL:O17	2:B:600:NIL:H12	2.13	0.48
1:C:453:GLU:HA	1:C:478:TRP:CZ3	2.49	0.47
1:A:238:GLU:O	1:A:241:ASP:HB2	2.14	0.47
1:D:247:LYS:HG3	1:D:257:TYR:CE2	2.50	0.47
1:A:305:CYS:O	1:A:311:PHE:HA	2.14	0.46
1:C:298:LEU:HD23	1:C:379:VAL:HB	1.96	0.46
1:B:295:HIS:CG	1:B:296:PRO:HD2	2.50	0.46
1:B:273:LEU:HB3	1:B:311:PHE:HB2	1.97	0.46
1:A:298:LEU:HD23	1:A:379:VAL:HB	1.97	0.46
1:A:444:ASP:CG	3:A:666:HOH:O	2.54	0.46
1:A:247:LYS:HG3	1:A:257:TYR:CE2	2.52	0.45
1:C:404:LYS:HE3	1:C:445:LEU:HD23	1.98	0.45
1:D:392:THR:O	1:D:402:PRO:HA	2.17	0.45
1:C:418:ILE:O	1:C:421:ASP:HB2	2.17	0.45
1:C:295:HIS:CG	1:C:296:PRO:HD2	2.51	0.45
1:D:242:ILE:HA	1:D:260:VAL:O	2.16	0.45
1:A:403:ILE:HB	1:A:445:LEU:HD22	1.99	0.45
1:C:285:LYS:HG3	3:C:645:HOH:O	2.16	0.44
1:B:249:GLY:O	1:B:250:GLY:C	2.56	0.44
1:D:322:ASN:HA	1:D:369:CYS:O	2.17	0.44

Continued on next page...

Continued from previous page...

Atom-1	Atom-2	Distance(Å)	Clash(Å)
1:B:404:LYS:HE3	1:B:445:LEU:CD2	2.46	0.44
1:D:451:LEU:HB3	1:D:456:TYR:HB3	2.00	0.43
1:D:479:ASN:HB3	1:D:482:ASP:OD2	2.18	0.43
1:D:349:SER:HB3	1:D:490:HIS:CE1	2.53	0.43
1:D:295:HIS:CG	1:D:296:PRO:HD2	2.54	0.42
1:A:392:THR:O	1:A:402:PRO:HA	2.18	0.42
1:D:326:TYR:O	1:D:330:CYS:HB3	2.20	0.42
1:C:306:THR:HA	1:C:311:PHE:CD1	2.55	0.42
1:D:339:VAL:O	1:D:343:MET:HG3	2.20	0.42
1:C:479:ASN:OD1	1:C:481:SER:HB3	2.21	0.41
1:B:434:THR:HG22	1:B:461:PRO:HB3	2.01	0.41
1:D:336:ASN:OD1	1:D:338:VAL:HG12	2.20	0.41
1:A:243:THR:OG1	1:A:262:LYS:HE2	2.21	0.41
1:D:341:LEU:HD21	1:D:496:MET:HB3	2.03	0.41
1:D:460:ARG:HA	1:D:469:TYR:CD1	2.56	0.41
1:D:404:LYS:HE3	1:D:445:LEU:HD23	2.02	0.41
1:C:296:PRO:O	1:C:378:LYS:HE2	2.20	0.41
1:B:233:ASP:OD2	1:B:235:TRP:HB2	2.20	0.41
1:C:474:ALA:O	1:C:477:GLN:HG2	2.20	0.40
1:B:295:HIS:HB3	1:B:298:LEU:HD12	2.03	0.40
1:A:294:LYS:HZ2	1:A:300:GLN:HE22	1.70	0.40
1:A:386:ARG:CB	3:A:634:HOH:O	2.70	0.40
1:B:278:MET:HA	1:B:278:MET:CE	2.52	0.40
1:D:309:PRO:HA	1:D:310:PRO:C	2.42	0.40

There are no symmetry-related clashes.

5.3 Torsion angles

5.3.1 Protein backbone ⓘ

In the following table, the Percentiles column shows the percent Ramachandran outliers of the chain as a percentile score with respect to all X-ray entries followed by that with respect to entries of similar resolution. The Analysed column shows the number of residues for which the backbone conformation was analysed, and the total number of residues.

Mol	Chain	Analysed	Favoured	Allowed	Outliers	Percentiles	
1	A	260/277 (94%)	247 (95%)	13 (5%)	0	100	100
1	B	243/277 (88%)	232 (96%)	11 (4%)	0	100	100
1	C	237/277 (86%)	226 (95%)	11 (5%)	0	100	100

Continued on next page...

Continued from previous page...

Mol	Chain	Analysed	Favoured	Allowed	Outliers	Percentiles	
1	D	259/277 (94%)	247 (95%)	11 (4%)	1 (0%)	43	45
All	All	999/1108 (90%)	952 (95%)	46 (5%)	1 (0%)	59	66

All (1) Ramachandran outliers are listed below:

Mol	Chain	Res	Type
1	D	255	GLU

5.3.2 Protein sidechains ⓘ

In the following table, the Percentiles column shows the percent sidechain outliers of the chain as a percentile score with respect to all X-ray entries followed by that with respect to entries of similar resolution. The Analysed column shows the number of residues for which the sidechain conformation was analysed, and the total number of residues.

Mol	Chain	Analysed	Rotameric	Outliers	Percentiles	
1	A	227/241 (94%)	223 (98%)	4 (2%)	71	82
1	B	219/241 (91%)	212 (97%)	7 (3%)	51	62
1	C	211/241 (88%)	205 (97%)	6 (3%)	56	67
1	D	222/241 (92%)	217 (98%)	5 (2%)	63	74
All	All	879/964 (91%)	857 (98%)	22 (2%)	60	71

All (22) residues with a non-rotameric sidechain are listed below:

Mol	Chain	Res	Type
1	A	240	THR
1	A	307	ARG
1	A	387	LEU
1	A	459	GLU
1	B	240	THR
1	B	272	THR
1	B	277	THR
1	B	278	MET
1	B	281	GLU
1	B	470	GLU
1	B	471	LEU
1	C	239	ARG
1	C	308	GLU
1	C	309	PRO

Continued on next page...

Continued from previous page...

Mol	Chain	Res	Type
1	C	446	SER
1	C	458	MET
1	C	481	SER
1	D	241	ASP
1	D	330	CYS
1	D	334	GLU
1	D	440	TYR
1	D	496	MET

Some sidechains can be flipped to improve hydrogen bonding and reduce clashes. All (6) such sidechains are listed below:

Mol	Chain	Res	Type
1	A	300	GLN
1	A	490	HIS
1	B	252	GLN
1	C	358	ASN
1	D	252	GLN
1	D	490	HIS

5.3.3 RNA ⓘ

There are no RNA chains in this entry.

5.4 Non-standard residues in protein, DNA, RNA chains ⓘ

There are no non-standard protein/DNA/RNA residues in this entry.

5.5 Carbohydrates ⓘ

There are no carbohydrates in this entry.

5.6 Ligand geometry ⓘ

4 ligands are modelled in this entry.

In the following table, the Counts columns list the number of bonds (or angles) for which Mogul statistics could be retrieved, the number of bonds (or angles) that are observed in the model and the number of bonds (or angles) that are defined in the chemical component dictionary. The Link column lists molecule types, if any, to which the group is linked. The Z score for a bond length

(or angle) is the number of standard deviations the observed value is removed from the expected value. A bond length (or angle) with $|Z| > 2$ is considered an outlier worth inspection. RMSZ is the root-mean-square of all Z scores of the bond lengths (or angles).

Mol	Type	Chain	Res	Link	Bond lengths			Bond angles		
					Counts	RMSZ	$\# Z > 2$	Counts	RMSZ	$\# Z > 2$
2	NIL	A	600	-	43,43,43	1.02	3 (6%)	62,62,62	1.37	8 (12%)
2	NIL	B	600	-	43,43,43	1.23	2 (4%)	62,62,62	1.83	12 (19%)
2	NIL	C	600	-	43,43,43	1.13	2 (4%)	62,62,62	1.79	14 (22%)
2	NIL	D	600	-	43,43,43	1.23	2 (4%)	62,62,62	2.09	14 (22%)

In the following table, the Chirals column lists the number of chiral outliers, the number of chiral centers analysed, the number of these observed in the model and the number defined in the chemical component dictionary. Similar counts are reported in the Torsion and Rings columns. '-' means no outliers of that kind were identified.

Mol	Type	Chain	Res	Link	Chirals	Torsions	Rings
2	NIL	A	600	-	-	0/26/26/26	0/5/5/5
2	NIL	B	600	-	-	0/26/26/26	0/5/5/5
2	NIL	C	600	-	-	0/26/26/26	0/5/5/5
2	NIL	D	600	-	-	0/26/26/26	0/5/5/5

All (9) bond length outliers are listed below:

Mol	Chain	Res	Type	Atoms	Z	Observed(Å)	Ideal(Å)
2	B	600	NIL	C33-N31	3.43	1.41	1.36
2	D	600	NIL	C9-C8	3.37	1.43	1.38
2	D	600	NIL	C33-N31	3.30	1.41	1.36
2	A	600	NIL	C33-N31	2.45	1.40	1.36
2	C	600	NIL	C33-N31	2.37	1.39	1.36
2	C	600	NIL	C56-C55	2.17	1.38	1.36
2	A	600	NIL	C8-N51	-2.09	1.40	1.45
2	B	600	NIL	C19-C21	2.07	1.42	1.39
2	A	600	NIL	C12-C5	2.00	1.42	1.39

All (48) bond angle outliers are listed below:

Mol	Chain	Res	Type	Atoms	Z	Observed(°)	Ideal(°)
2	D	600	NIL	C35-N34-C33	8.70	122.14	116.44
2	D	600	NIL	N40-C33-N34	-7.07	120.60	126.68
2	B	600	NIL	N40-C33-N34	-6.55	121.04	126.68
2	C	600	NIL	C35-N34-C33	5.72	120.19	116.44
2	B	600	NIL	C35-N34-C33	5.48	120.03	116.44

Continued on next page...

Continued from previous page...

Mol	Chain	Res	Type	Atoms	Z	Observed(°)	Ideal(°)
2	D	600	NIL	N31-C33-N40	4.79	131.42	116.41
2	C	600	NIL	N40-C33-N34	-4.77	122.57	126.68
2	C	600	NIL	N31-C33-N40	4.32	129.95	116.41
2	B	600	NIL	N31-C33-N40	4.08	129.21	116.41
2	D	600	NIL	C6-C8-C9	-4.00	116.86	121.72
2	A	600	NIL	N31-C33-N40	3.97	128.85	116.41
2	A	600	NIL	N40-C33-N34	-3.82	123.39	126.68
2	C	600	NIL	C8-C9-C11	3.53	122.32	118.42
2	B	600	NIL	C6-C8-C9	-3.50	117.46	121.72
2	D	600	NIL	C21-N31-C33	-3.43	112.51	125.12
2	B	600	NIL	C38-N40-C33	3.33	118.23	115.43
2	C	600	NIL	N31-C33-N34	-3.22	107.47	116.97
2	A	600	NIL	O17-C16-C18	-3.18	115.43	121.01
2	A	600	NIL	N31-C33-N34	-3.15	107.66	116.97
2	B	600	NIL	C8-C9-C11	3.13	121.88	118.42
2	D	600	NIL	C25-C18-C19	-3.11	115.33	119.24
2	B	600	NIL	C8-C6-C5	3.06	122.53	120.06
2	D	600	NIL	N31-C33-N34	-3.06	107.93	116.97
2	C	600	NIL	C27-C22-C21	3.06	124.65	121.40
2	D	600	NIL	C8-C9-C11	2.86	121.58	118.42
2	C	600	NIL	C19-C21-N31	-2.83	115.61	121.37
2	B	600	NIL	C25-C18-C19	-2.80	115.71	119.24
2	C	600	NIL	C6-C8-C9	-2.64	118.51	121.72
2	A	600	NIL	C8-C9-C11	2.60	121.29	118.42
2	B	600	NIL	C56-N51-C52	-2.57	103.81	108.47
2	C	600	NIL	C23-C22-C21	2.49	119.50	117.42
2	B	600	NIL	N31-C33-N34	-2.48	109.65	116.97
2	C	600	NIL	C22-C21-N31	2.46	124.12	119.09
2	C	600	NIL	C38-C36-C35	2.46	119.52	117.25
2	D	600	NIL	C9-C8-N51	2.45	122.21	118.59
2	C	600	NIL	C36-C35-N34	-2.43	118.64	122.02
2	A	600	NIL	C56-N51-C52	-2.38	104.16	108.47
2	A	600	NIL	C25-C18-C19	-2.33	116.30	119.24
2	B	600	NIL	C6-C8-N51	2.32	122.01	118.59
2	B	600	NIL	C21-N31-C33	-2.29	116.69	125.12
2	D	600	NIL	C18-C19-C21	2.26	123.93	120.11
2	D	600	NIL	C38-N40-C33	2.26	117.33	115.43
2	C	600	NIL	C25-C18-C19	-2.24	116.41	119.24
2	D	600	NIL	C41-C35-N34	-2.18	113.39	116.22
2	C	600	NIL	C27-C22-C23	-2.15	115.79	120.33
2	A	600	NIL	C9-C8-N51	2.13	121.73	118.59
2	D	600	NIL	C56-N51-C52	-2.09	104.67	108.47

Continued on next page...

Continued from previous page...

Mol	Chain	Res	Type	Atoms	Z	Observed(°)	Ideal(°)
2	D	600	NIL	C36-C35-C41	2.01	126.18	121.85

There are no chirality outliers.

There are no torsion outliers.

There are no ring outliers.

5.7 Other polymers ⓘ

There are no such residues in this entry.

5.8 Polymer linkage issues

There are no chain breaks in this entry.

6 Fit of model and data ⓘ

6.1 Protein, DNA and RNA chains ⓘ

In the following table, the column labelled ‘#RSRZ > 2’ contains the number (and percentage) of RSRZ outliers, followed by percent RSRZ outliers for the chain as percentile scores relative to all X-ray entries and entries of similar resolution. The OWAB column contains the minimum, median, 95th percentile and maximum values of the occupancy-weighted average B-factor per residue. The column labelled ‘Q < 0.9’ lists the number of (and percentage) of residues with an average occupancy less than 0.9.

Mol	Chain	Analysed	<RSRZ>	#RSRZ>2	OWAB(Å ²)	Q<0.9
1	A	264/277 (95%)	-0.01	5 (1%) 64 64	27, 37, 60, 65	0
1	B	247/277 (89%)	0.12	9 (3%) 41 41	28, 43, 71, 77	0
1	C	243/277 (87%)	0.18	7 (2%) 49 50	33, 46, 61, 70	0
1	D	263/277 (94%)	0.87	42 (15%) 3 2	50, 63, 83, 92	0
All	All	1017/1108 (91%)	0.29	63 (6%) 20 19	27, 48, 73, 92	0

All (63) RSRZ outliers are listed below:

Mol	Chain	Res	Type	RSRZ
1	B	278	MET	5.8
1	D	442	GLY	5.7
1	D	259	GLY	5.1
1	D	240	THR	4.8
1	D	267	THR	4.7
1	D	333	GLN	4.7
1	D	244	MET	4.3
1	D	243	THR	4.2
1	D	441	PRO	4.2
1	D	260	VAL	4.1
1	D	242	ILE	4.1
1	D	443	ILE	3.9
1	D	233	ASP	3.9
1	A	274	LYS	3.8
1	D	261	TRP	3.6
1	D	235	TRP	3.5
1	D	245	LYS	3.4
1	D	454	LYS	3.3
1	D	302	LEU	3.2
1	D	478	TRP	3.2
1	D	444	ASP	3.2

Continued on next page...

Continued from previous page...

Mol	Chain	Res	Type	RSRZ
1	D	238	GLU	3.2
1	D	435	TYR	3.0
1	D	334	GLU	3.0
1	D	462	GLU	3.0
1	C	443	ILE	3.0
1	D	270	VAL	3.0
1	A	500	SER	3.0
1	D	303	GLY	2.9
1	B	264	TYR	2.8
1	D	268	VAL	2.7
1	C	232	TYR	2.7
1	D	329	GLU	2.7
1	B	277	THR	2.7
1	D	456	TYR	2.7
1	C	444	ASP	2.7
1	D	247	LYS	2.7
1	D	234	LYS	2.6
1	B	246	HIS	2.6
1	D	258	GLU	2.5
1	D	500	SER	2.5
1	D	301	LEU	2.5
1	D	317	PHE	2.5
1	C	497	PHE	2.5
1	B	383	GLY	2.5
1	D	330	CYS	2.5
1	D	491	GLN	2.4
1	D	241	ASP	2.4
1	B	284	LEU	2.4
1	D	246	HIS	2.4
1	C	442	GLY	2.4
1	B	265	SER	2.3
1	B	243	THR	2.3
1	A	389	THR	2.2
1	A	369	CYS	2.2
1	B	307	ARG	2.1
1	C	273	LEU	2.1
1	A	246	HIS	2.1
1	D	307	ARG	2.1
1	D	391	ASP	2.0
1	D	432	ILE	2.0
1	D	436	GLY	2.0
1	C	268	VAL	2.0

6.2 Non-standard residues in protein, DNA, RNA chains

There are no non-standard protein/DNA/RNA residues in this entry.

6.3 Carbohydrates

There are no carbohydrates in this entry.

6.4 Ligands

In the following table, the Atoms column lists the number of modelled atoms in the group and the number defined in the chemical component dictionary. LLDF column lists the quality of electron density of the group with respect to its neighbouring residues in protein, DNA or RNA chains. The B-factors column lists the minimum, median, 95th percentile and maximum values of B factors of atoms in the group. The column labelled 'Q< 0.9' lists the number of atoms with occupancy less than 0.9.

Mol	Type	Chain	Res	Atoms	RSR	LLDF	B-factors(Å ²)	Q<0.9
2	NIL	A	600	39/39	0.15	0.79	27,34,45,46	0
2	NIL	B	600	39/39	0.14	0.19	38,44,55,55	0
2	NIL	C	600	39/39	0.15	-0.01	33,37,48,51	0
2	NIL	D	600	39/39	0.14	-0.10	51,60,63,64	0

6.5 Other polymers

There are no such residues in this entry.