



Full wwPDB X-ray Structure Validation Report

Feb 27, 2014 – 03:04 PM GMT

PDB ID : 3CW9
Title : 4-Chlorobenzoyl-CoA Ligase/Synthetase in the Thioester-forming Conformation, bound to 4-chlorophenacyl-CoA
Authors : Reger, A.S.; Cao, J.; Wu, R.; Dunaway-Mariano, D.; Gulick, A.M.
Deposited on : 2008-04-21
Resolution : 2.00 Å(reported)

This is a full wwPDB validation report for a publicly released PDB entry.
We welcome your comments at validation@mail.wwpdb.org
A user guide is available at <http://wwpdb.org/ValidationPDFNotes.html>

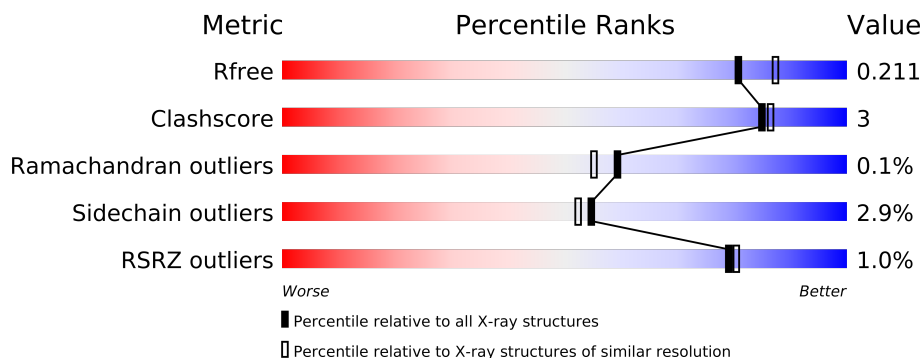
The following versions of software and data (see [references](#)) were used in the production of this report:

MolProbity : 4.02b-467
Mogul : 1.15 2013
Xtriage (Phenix) : dev-1323
EDS : stable22639
Percentile statistics : 21963
Refmac : 5.8.0049
CCP4 : 6.3.0 (Settle)
Ideal geometry (proteins) : Engh & Huber (2001)
Ideal geometry (DNA, RNA) : Parkinson et. al. (1996)
Validation Pipeline (wwPDB-VP) : stable22683

1 Overall quality at a glance

The reported resolution of this entry is 2.00 Å.

Percentile scores (ranging between 0-100) for global validation metrics of the entry are shown in the following graphic. The table shows the number of entries on which the scores are based.



Metric	Whole archive (#Entries)	Similar resolution (#Entries, resolution range(Å))
R_{free}	66092	4888 (2.00-2.00)
Clashscore	79885	6188 (2.00-2.00)
Ramachandran outliers	78287	6102 (2.00-2.00)
Sidechain outliers	78261	6100 (2.00-2.00)
RSRZ outliers	66119	4890 (2.00-2.00)

The table below summarises the geometric issues observed across the polymeric chains and their fit to the electron density. The red, orange, yellow and green segments on the lower bar indicate the fraction of residues that contain outliers for ≥ 3 , 2, 1 and 0 types of geometric quality criteria. The upper red bar (where present) indicates the fraction of residues that have poor fit to the electron density.

Mol	Chain	Length	Quality of chain
1	A	504	
1	B	504	

The following table lists non-polymeric compounds that are outliers for geometric or electron-density-fit criteria:

Mol	Type	Chain	Res	Geometry	Electron density
3	NO3	A	1303	X	X
3	NO3	B	1301	X	X
3	NO3	B	1302	X	-
4	AMP	A	997	-	X
6	EDO	A	1003	-	X

2 Entry composition i

There are 7 unique types of molecules in this entry. The entry contains 8584 atoms, of which 0 are hydrogen and 0 are deuterium.

In the tables below, the ZeroOcc column contains the number of atoms modelled with zero occupancy, the AltConf column contains the number of residues with at least one atom in alternate conformation and the Trace column contains the number of residues modelled with at most 2 atoms.

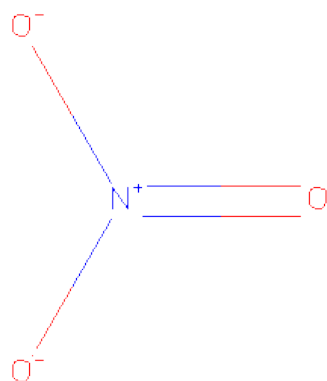
- Molecule 1 is a protein called 4-chlorobenzoyl CoA ligase.

Mol	Chain	Residues	Atoms					ZeroOcc	AltConf	Trace
1	A	503	Total	C	N	O	S	0	0	0
			3789	2394	679	703	13			
1	B	503	Total	C	N	O	S	0	0	0
			3815	2409	688	705	13			

- Molecule 2 is MAGNESIUM ION (three-letter code: MG) (formula: Mg).

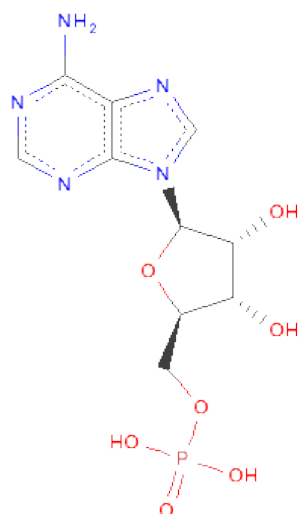
Mol	Chain	Residues	Atoms		ZeroOcc	AltConf
2	B	1	Total	Mg	0	0
			1	1		
2	A	1	Total	Mg	0	0
			1	1		

- Molecule 3 is NITRATE ION (three-letter code: NO3) (formula: NO₃).



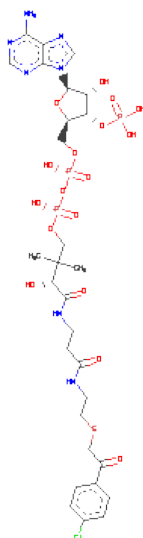
Mol	Chain	Residues	Atoms			ZeroOcc	AltConf
3	A	1	Total	N	O	0	0
			4	1	3		
3	B	1	Total	N	O	0	0
			4	1	3		
3	B	1	Total	N	O	0	0
			4	1	3		

- Molecule 4 is ADENOSINE MONOPHOSPHATE (three-letter code: AMP) (formula: C₁₀H₁₄N₅O₇P).



Mol	Chain	Residues	Atoms					ZeroOcc	AltConf
4	A	1	Total	C	N	O	P	0	0
			23	10	5	7	1		
4	B	1	Total	C	N	O	P	0	0
			23	10	5	7	1		

- Molecule 5 is 4-CHLOROPHENACYL-COENZYME A (three-letter code: 01A) (formula: C₂₉H₄₁ClN₇O₁₇P₃S).



Mol	Chain	Residues	Atoms							ZeroOcc	AltConf
5	A	1	Total	C	Cl	N	O	P	S	0	0
			58	29	1	7	17	3	1		
5	B	1	Total	C	Cl	N	O	P	S	0	0
			58	29	1	7	17	3	1		

- Molecule 6 is 1,2-ETHANEDIOL (three-letter code: EDO) (formula: $C_2H_6O_2$).



Mol	Chain	Residues	Atoms			ZeroOcc	AltConf
6	A	1	Total	C	O	0	0
			4	2	2		

- Molecule 7 is water.

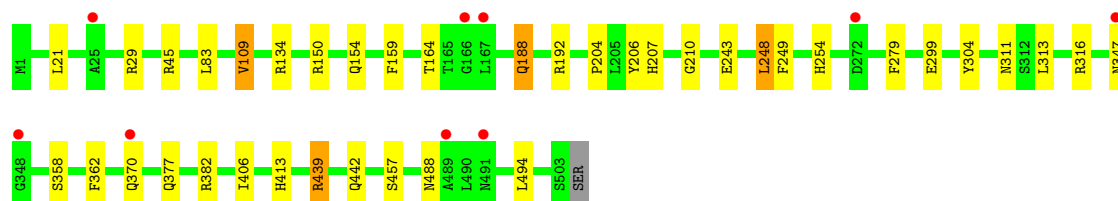
Mol	Chain	Residues	Atoms		ZeroOcc	AltConf
7	A	382	Total 382	O 382	0	0
7	B	418	Total 418	O 418	0	0

3 Residue-property plots

These plots are drawn for all protein, RNA and DNA chains in the entry. The first graphic for a chain summarises the proportions of errors displayed in the second graphic. The second graphic shows the sequence view annotated by issues in geometry and electron density. Residues are color-coded according to the number of geometric quality criteria for which they contain at least one outlier: green = 0, yellow = 1, orange = 2 and red = 3 or more. A red dot above a residue indicates a poor fit to the electron density ($RSRZ > 2$). Stretches of 2 or more consecutive residues without any outlier are shown as a green connector. Residues present in the sample, but not in the model, are shown in grey.

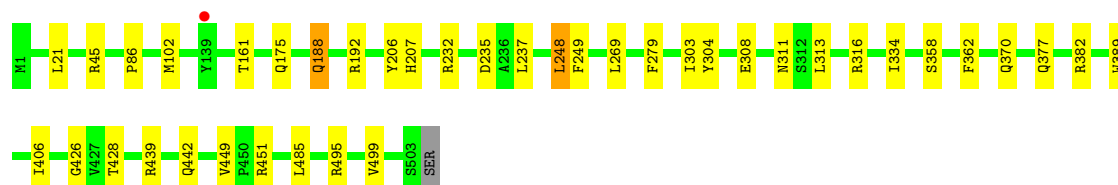
- Molecule 1: 4-chlorobenzoyl CoA ligase

Chain A: 



- Molecule 1: 4-chlorobenzoyl CoA ligase

Chain B: 



4 Data and refinement statistics

Property	Value	Source
Space group	P 21 21 21	Depositor
Cell constants a, b, c, α , β , γ	60.51Å 87.79Å 186.06Å 90.00° 90.00° 90.00°	Depositor
Resolution (Å)	35.00 – 2.00 34.90 – 2.00	Depositor EDS
% Data completeness (in resolution range)	94.7 (35.00-2.00) 94.6 (34.90-2.00)	Depositor EDS
R_{merge}	0.09	Depositor
R_{sym}	(Not available)	Depositor
$\langle I/\sigma(I) \rangle$ ¹	5.80 (at 2.00Å)	Xtriage
Refinement program	REFMAC 5.2	Depositor
R, R_{free}	0.166 , 0.209 0.168 , 0.211	Depositor DCC
R_{free} test set	3259 reflections (5.35%)	DCC
Wilson B-factor (Å ²)	18.1	Xtriage
Anisotropy	0.705	Xtriage
Bulk solvent k_{sol} (e/Å ³), B_{sol} (Å ²)	0.36 , 35.7	EDS
Estimated twinning fraction	No twinning to report.	Xtriage
L-test for twinning	$\langle L \rangle = 0.47$, $\langle L^2 \rangle = 0.30$	Xtriage
Outliers	0 of 64218 reflections	Xtriage
F_o, F_c correlation	0.95	EDS
Total number of atoms	8584	wwPDB-VP
Average B, all atoms (Å ²)	18.0	wwPDB-VP

Xtriage's analysis on translational NCS is as follows: *The largest off-origin peak in the Patterson function is 4.13% of the height of the origin peak. No significant pseudotranslation is detected.*

¹Intensities estimated from amplitudes.

5 Model quality

5.1 Standard geometry

Bond lengths and bond angles in the following residue types are not validated in this section: 01A, MG, NO3, EDO, AMP

The Z score for a bond length (or angle) is the number of standard deviations the observed value is removed from the expected value. A bond length (or angle) with $|Z| > 5$ is considered an outlier worth inspection. RMSZ is the root-mean-square of all Z scores of the bond lengths (or angles).

Mol	Chain	Bond lengths		Bond angles	
		RMSZ	$\# Z > 5$	RMSZ	$\# Z > 5$
1	A	0.42	0/3861	0.57	2/5261 (0.0%)
1	B	0.42	0/3887	0.56	1/5291 (0.0%)
All	All	0.42	0/7748	0.57	3/10552 (0.0%)

Chiral center outliers are detected by calculating the chiral volume of a chiral center and verifying if the center is modelled as a planar moiety or with the opposite hand. A planarity outlier is detected by checking planarity of atoms in a peptide group, atoms in a mainchain group or atoms of a sidechain that are expected to be planar.

Mol	Chain	#Chirality outliers	#Planarity outliers
1	A	0	1

There are no bond length outliers.

All (3) bond angle outliers are listed below:

Mol	Chain	Res	Type	Atoms	Z	Observed($^{\circ}$)	Ideal($^{\circ}$)
1	B	248	LEU	CA-CB-CG	6.29	129.76	115.30
1	A	109	VAL	N-CA-C	5.70	126.38	111.00
1	A	248	LEU	CA-CB-CG	5.69	128.38	115.30

There are no chirality outliers.

All (1) planarity outliers are listed below:

Mol	Chain	Res	Type	Group
1	A	109	VAL	Peptide

5.2 Close contacts ⓘ

In the following table, the Non-H and H(model) columns list the number of non-hydrogen atoms and hydrogen atoms in the chain respectively. The H(added) column lists the number of hydrogens added by MolProbity. The Clashes column lists the number of clashes within the asymmetric unit, and the number in parentheses is this value normalized per 1000 atoms of the molecule in the chain. The Symm-Clashes column gives symmetry related clashes, in the same way as for the Clashes column.

Mol	Chain	Non-H	H(model)	H(added)	Clashes	Symm-Clashes
1	A	3789	0	3810	23	0
1	B	3815	0	3868	21	0
2	A	1	0	0	0	0
2	B	1	0	0	0	0
3	A	4	0	0	0	0
3	B	8	0	0	0	0
4	A	23	0	12	0	0
4	B	23	0	12	0	0
5	A	58	0	37	3	0
5	B	58	0	37	3	0
6	A	4	0	6	0	0
7	A	382	0	0	3	0
7	B	418	0	0	2	0
All	All	8584	0	7782	44	0

Clashscore is defined as the number of clashes calculated for the entry per 1000 atoms (including hydrogens) of the entry. The overall clashscore for this entry is 3.

All (44) close contacts within the same asymmetric unit are listed below.

Atom-1	Atom-2	Distance(Å)	Clash(Å)
1:A:150:ARG:HA	1:A:154:GLN:HE22	1.53	0.73
1:A:406:ILE:H	1:A:442:GLN:HE21	1.44	0.65
1:B:303:ILE:HG23	1:B:311:ASN:OD1	1.98	0.64
1:B:188:GLN:HE21	1:B:311:ASN:HD22	1.46	0.64
1:B:406:ILE:H	1:B:442:GLN:NE2	1.96	0.62
1:A:207:HIS:HB3	5:A:990:01A:H2PA	1.80	0.61
1:A:406:ILE:H	1:A:442:GLN:NE2	1.99	0.60
1:A:439:ARG:NH2	7:A:2574:HOH:O	2.36	0.59
1:A:316:ARG:HD3	1:B:192:ARG:NH2	2.18	0.57
1:B:428:THR:HG21	7:B:2636:HOH:O	2.04	0.57
1:A:188:GLN:HE21	1:A:311:ASN:HD22	1.51	0.57
1:A:188:GLN:HE21	1:A:311:ASN:ND2	2.03	0.56
1:B:207:HIS:HB3	5:B:991:01A:H2PA	1.89	0.55
1:B:188:GLN:HE21	1:B:311:ASN:ND2	2.05	0.54

Continued on next page...

Continued from previous page...

Atom-1	Atom-2	Distance(Å)	Clash(Å)
1:A:207:HIS:CB	5:A:990:01A:H2PA	2.38	0.53
1:B:377:GLN:NE2	1:B:382:ARG:HH11	2.07	0.53
1:B:406:ILE:H	1:B:442:GLN:HE21	1.57	0.53
1:B:207:HIS:CB	5:B:991:01A:H2PA	2.39	0.53
1:A:83:LEU:HD12	1:A:159:PHE:CE1	2.44	0.52
1:B:428:THR:HG22	1:B:449:VAL:O	2.12	0.50
1:A:192:ARG:NH2	1:B:316:ARG:HD3	2.27	0.49
1:B:304:TYR:HB3	1:B:313:LEU:HB2	1.94	0.49
1:A:488:ASN:HB3	1:A:494:LEU:HD21	1.95	0.49
1:A:164:THR:HA	1:A:413:HIS:CD2	2.48	0.48
5:B:991:01A:H3PA	5:B:991:01A:H1	1.68	0.48
1:A:254:HIS:HE1	7:A:2211:HOH:O	1.96	0.48
1:B:232:ARG:NE	1:B:235:ASP:OD2	2.45	0.48
7:A:2334:HOH:O	1:B:358:SER:HB2	2.14	0.47
1:A:150:ARG:HA	1:A:154:GLN:NE2	2.24	0.47
1:A:29:ARG:HH22	1:A:243:GLU:CD	2.20	0.44
1:B:86:PRO:HD2	1:B:206:TYR:CE1	2.51	0.44
1:A:299:GLU:OE2	1:A:316:ARG:HD2	2.17	0.44
1:A:204:PRO:HB3	1:A:206:TYR:CZ	2.52	0.44
1:B:237:LEU:HB3	1:B:269:LEU:HD13	1.99	0.44
1:B:334:ILE:HD12	1:B:389:TRP:CD1	2.53	0.43
1:A:188:GLN:HG2	1:A:311:ASN:HD21	1.83	0.43
1:A:377:GLN:NE2	1:A:382:ARG:HH11	2.17	0.43
1:A:304:TYR:HB3	1:A:313:LEU:HB2	2.00	0.43
5:A:990:01A:H3PA	5:A:990:01A:H1	1.77	0.42
1:B:426:GLY:H	1:B:451:ARG:CZ	2.33	0.42
1:A:204:PRO:O	1:A:210:GLY:HA3	2.19	0.41
1:B:161:THR:HG21	1:B:308:GLU:OE2	2.19	0.41
1:A:358:SER:HB2	7:B:2221:HOH:O	2.21	0.40
1:B:495:ARG:O	1:B:499:VAL:HG23	2.21	0.40

There are no symmetry-related clashes.

5.3 Torsion angles

5.3.1 Protein backbone ⓘ

In the following table, the Percentiles column shows the percent Ramachandran outliers of the chain as a percentile score with respect to all X-ray entries followed by that with respect to entries of similar resolution. The Analysed column shows the number of residues for which the backbone conformation was analysed, and the total number of residues.

Mol	Chain	Analysed	Favoured	Allowed	Outliers	Percentiles	
1	A	501/504 (99%)	490 (98%)	10 (2%)	1 (0%)	56	51
1	B	501/504 (99%)	492 (98%)	9 (2%)	0	100	100
All	All	1002/1008 (99%)	982 (98%)	19 (2%)	1 (0%)	59	55

All (1) Ramachandran outliers are listed below:

Mol	Chain	Res	Type
1	A	347	ASN

5.3.2 Protein sidechains ⓘ

In the following table, the Percentiles column shows the percent sidechain outliers of the chain as a percentile score with respect to all X-ray entries followed by that with respect to entries of similar resolution. The Analysed column shows the number of residues for which the sidechain conformation was analysed, and the total number of residues.

Mol	Chain	Analysed	Rotameric	Outliers	Percentiles	
1	A	391/400 (98%)	380 (97%)	11 (3%)	56	54
1	B	398/400 (100%)	386 (97%)	12 (3%)	53	50
All	All	789/800 (99%)	766 (97%)	23 (3%)	55	52

All (23) residues with a non-rotameric sidechain are listed below:

Mol	Chain	Res	Type
1	A	21	LEU
1	A	45	ARG
1	A	134	ARG
1	A	188	GLN
1	A	248	LEU
1	A	249	PHE
1	A	279	PHE
1	A	362	PHE
1	A	370	GLN
1	A	439	ARG
1	A	457	SER
1	B	21	LEU
1	B	45	ARG
1	B	102	MET
1	B	175	GLN
1	B	188	GLN

Continued on next page...

Continued from previous page...

Mol	Chain	Res	Type
1	B	248	LEU
1	B	249	PHE
1	B	279	PHE
1	B	362	PHE
1	B	370	GLN
1	B	439	ARG
1	B	485	LEU

Some sidechains can be flipped to improve hydrogen bonding and reduce clashes. All (16) such sidechains are listed below:

Mol	Chain	Res	Type
1	A	54	GLN
1	A	154	GLN
1	A	175	GLN
1	A	244	GLN
1	A	254	HIS
1	A	294	GLN
1	A	311	ASN
1	A	377	GLN
1	A	442	GLN
1	B	54	GLN
1	B	154	GLN
1	B	175	GLN
1	B	311	ASN
1	B	367	ASN
1	B	377	GLN
1	B	442	GLN

5.3.3 RNA ⓘ

There are no RNA chains in this entry.

5.4 Non-standard residues in protein, DNA, RNA chains ⓘ

There are no non-standard protein/DNA/RNA residues in this entry.

5.5 Carbohydrates ⓘ

There are no carbohydrates in this entry.

5.6 Ligand geometry

Of 10 ligands modelled in this entry, 2 are monoatomic - leaving 8 for Mogul analysis.

In the following table, the Counts columns list the number of bonds (or angles) for which Mogul statistics could be retrieved, the number of bonds (or angles) that are observed in the model and the number of bonds (or angles) that are defined in the chemical component dictionary. The Link column lists molecule types, if any, to which the group is linked. The Z score for a bond length (or angle) is the number of standard deviations the observed value is removed from the expected value. A bond length (or angle) with $|Z| > 2$ is considered an outlier worth inspection. RMSZ is the root-mean-square of all Z scores of the bond lengths (or angles).

Mol	Type	Chain	Res	Link	Bond lengths			Bond angles		
					Counts	RMSZ	# Z > 2	Counts	RMSZ	# Z > 2
6	EDO	A	1003	-	3,3,3	0.52	0	2,2,2	0.57	0
3	NO3	A	1303	-	3,3,3	3.21	3 (100%)	3,3,3	0.16	0
5	01A	A	990	2	61,61,61	2.90	6 (9%)	90,90,90	2.19	15 (16%)
4	AMP	A	997	-	25,25,25	1.17	2 (8%)	38,38,38	1.79	6 (15%)
3	NO3	B	1301	-	3,3,3	3.26	3 (100%)	3,3,3	0.12	0
3	NO3	B	1302	-	3,3,3	3.13	3 (100%)	3,3,3	0.10	0
5	01A	B	991	2	61,61,61	2.96	6 (9%)	90,90,90	2.23	18 (20%)
4	AMP	B	999	-	25,25,25	1.20	2 (8%)	38,38,38	1.88	7 (18%)

In the following table, the Chirals column lists the number of chiral outliers, the number of chiral centers analysed, the number of these observed in the model and the number defined in the chemical component dictionary. Similar counts are reported in the Torsion and Rings columns. '-' means no outliers of that kind were identified.

Mol	Type	Chain	Res	Link	Chirals	Torsions	Rings
6	EDO	A	1003	-	-	0/1/1/1	0/0/0/0
3	NO3	A	1303	-	-	0/0/0/0	0/0/0/0
5	01A	A	990	2	-	1/56/72/72	0/2/4/4
4	AMP	A	997	-	-	0/10/26/26	0/1/3/3
3	NO3	B	1301	-	-	0/0/0/0	0/0/0/0
3	NO3	B	1302	-	-	0/0/0/0	0/0/0/0
5	01A	B	991	2	-	1/56/72/72	0/2/4/4
4	AMP	B	999	-	-	0/10/26/26	0/1/3/3

All (25) bond length outliers are listed below:

Mol	Chain	Res	Type	Atoms	Z	Observed(Å)	Ideal(Å)
5	B	991	01A	C1-C	-19.86	1.33	1.51
5	A	990	01A	C1-C	-19.34	1.34	1.51
5	B	991	01A	C1-S1P	-8.18	1.66	1.81

Continued on next page...

Continued from previous page...

Mol	Chain	Res	Type	Atoms	Z	Observed(Å)	Ideal(Å)
5	A	990	01A	C1-S1P	-8.17	1.66	1.81
5	A	990	01A	O9P-C9P	5.06	1.33	1.23
5	B	991	01A	O9P-C9P	4.79	1.32	1.23
3	B	1301	NO3	O1-N	3.88	1.40	1.24
3	A	1303	NO3	O1-N	3.81	1.40	1.24
3	B	1302	NO3	O1-N	3.75	1.40	1.24
4	B	999	AMP	C5-C4	3.24	1.47	1.40
4	A	997	AMP	C5-C4	3.11	1.47	1.40
3	B	1301	NO3	O2-N	2.92	1.40	1.25
4	A	997	AMP	C4-N9	-2.92	1.33	1.37
3	B	1301	NO3	O3-N	2.89	1.40	1.25
3	A	1303	NO3	O3-N	2.87	1.40	1.25
3	A	1303	NO3	O2-N	2.86	1.40	1.25
5	A	990	01A	C9P-N8P	-2.84	1.27	1.33
3	B	1302	NO3	O3-N	2.83	1.40	1.25
5	B	991	01A	C9P-N8P	-2.76	1.27	1.33
4	B	999	AMP	C4-N9	-2.72	1.33	1.37
3	B	1302	NO3	O2-N	2.71	1.39	1.25
5	A	990	01A	C4A-N9A	-2.57	1.34	1.37
5	B	991	01A	C4A-N9A	-2.47	1.34	1.37
5	B	991	01A	CBP-CAP	-2.19	1.53	1.55
5	A	990	01A	C4-CL4A	2.03	1.79	1.74

All (46) bond angle outliers are listed below:

Mol	Chain	Res	Type	Atoms	Z	Observed(°)	Ideal(°)
5	A	990	01A	C1-C-C1'	12.44	127.24	117.81
5	B	991	01A	C1-C-C1'	11.57	126.59	117.81
5	B	991	01A	N3A-C2A-N1A	-10.00	120.35	128.71
5	A	990	01A	N3A-C2A-N1A	-9.42	120.84	128.71
4	B	999	AMP	N3-C2-N1	-6.95	122.90	128.71
4	A	997	AMP	N3-C2-N1	-6.46	123.31	128.71
5	B	991	01A	C-C1-S1P	5.50	130.87	111.63
5	A	990	01A	C-C1-S1P	5.24	129.96	111.63
4	B	999	AMP	N3-C4-N9	5.08	134.61	125.43
4	A	997	AMP	N3-C4-N9	4.84	134.16	125.43
5	B	991	01A	O2-C-C1	-4.45	113.52	120.59
5	B	991	01A	N3A-C4A-N9A	4.10	132.84	125.43
5	A	990	01A	N3A-C4A-N9A	3.87	132.42	125.43
5	A	990	01A	C3P-N4P-C5P	3.66	130.29	122.84
5	A	990	01A	O2-C-C1	-3.54	114.98	120.59
5	B	991	01A	C2P-S1P-C1	-3.51	96.52	102.00

Continued on next page...

Continued from previous page...

Mol	Chain	Res	Type	Atoms	Z	Observed(°)	Ideal(°)
4	A	997	AMP	O4'-C1'-N9	3.16	111.38	108.44
4	A	997	AMP	C4-C5-N7	-3.09	106.88	109.52
5	A	990	01A	O4A'-C1A'-N9A	3.02	111.25	108.44
5	B	991	01A	CDP-CBP-CAP	3.01	114.04	108.82
4	A	997	AMP	C5-C4-N3	-2.95	119.28	125.70
4	B	999	AMP	O4'-C1'-N9	2.95	111.18	108.44
4	B	999	AMP	C5-C4-N3	-2.91	119.37	125.70
5	B	991	01A	P2A-O3A-P1A	-2.85	123.33	131.68
4	B	999	AMP	C4-C5-N7	-2.83	107.10	109.52
5	A	990	01A	P2A-O3A-P1A	-2.78	123.52	131.68
5	B	991	01A	C3P-N4P-C5P	2.74	128.42	122.84
5	B	991	01A	C5A-C4A-N3A	-2.59	120.07	125.70
5	A	990	01A	C5A-C4A-N3A	-2.58	120.08	125.70
5	B	991	01A	O7A-P3A-O3A'	-2.58	99.67	107.09
5	B	991	01A	C8A-N9A-C4A	2.52	108.82	106.90
5	B	991	01A	CCP-CBP-CAP	-2.43	105.15	108.70
4	B	999	AMP	C2-N3-C4	2.39	120.82	114.01
5	A	990	01A	C2P-S1P-C1	-2.38	98.30	102.00
4	A	997	AMP	C2-N3-C4	2.35	120.70	114.01
5	B	991	01A	C2P-C3P-N4P	-2.30	107.31	112.50
5	A	990	01A	C2A-N3A-C4A	2.27	120.47	114.01
5	B	991	01A	C2A-N3A-C4A	2.26	120.44	114.01
4	B	999	AMP	C8-N9-C4	2.20	108.58	106.90
5	B	991	01A	CEP-CBP-CCP	2.17	111.88	108.76
5	A	990	01A	C4A-C5A-N7A	-2.16	107.67	109.52
5	A	990	01A	CCP-CBP-CAP	-2.14	105.56	108.70
5	B	991	01A	O4A'-C1A'-N9A	2.13	110.42	108.44
5	A	990	01A	C7P-C6P-C5P	-2.07	108.73	112.25
5	B	991	01A	C7P-N8P-C9P	2.04	126.75	122.57
5	A	990	01A	C6P-C7P-N8P	-2.00	107.55	111.87

There are no chirality outliers.

All (2) torsion outliers are listed below:

Mol	Chain	Res	Type	Atoms
5	B	991	01A	C1'-C-C1-S1P
5	A	990	01A	C1'-C-C1-S1P

There are no ring outliers.

5.7 Other polymers ⓘ

There are no such residues in this entry.

5.8 Polymer linkage issues

There are no chain breaks in this entry.

6 Fit of model and data ⓘ

6.1 Protein, DNA and RNA chains ⓘ

In the following table, the column labelled ‘#RSRZ> 2’ contains the number (and percentage) of RSRZ outliers, followed by percent RSRZ outliers for the chain as percentile scores relative to all X-ray entries and entries of similar resolution. The OWAB column contains the minimum, median, 95th percentile and maximum values of the occupancy-weighted average B-factor per residue. The column labelled ‘Q< 0.9’ lists the number of (and percentage) of residues with an average occupancy less than 0.9.

Mol	Chain	Analysed	<RSRZ>	#RSRZ>2	OWAB(Å ²)	Q<0.9
1	A	503/504 (99%)	-0.10	9 (1%) 65 66	12, 17, 28, 35	0
1	B	503/504 (99%)	-0.24	1 (0%) 93 94	11, 16, 25, 42	0
All	All	1006/1008 (99%)	-0.17	10 (0%) 79 80	11, 17, 27, 42	0

All (10) RSRZ outliers are listed below:

Mol	Chain	Res	Type	RSRZ
1	A	347	ASN	5.2
1	A	491	ASN	4.0
1	A	489	ALA	3.9
1	A	348	GLY	3.4
1	A	25	ALA	2.7
1	B	139	TYR	2.6
1	A	370	GLN	2.6
1	A	272	ASP	2.2
1	A	166	GLY	2.1
1	A	167	LEU	2.1

6.2 Non-standard residues in protein, DNA, RNA chains ⓘ

There are no non-standard protein/DNA/RNA residues in this entry.

6.3 Carbohydrates ⓘ

There are no carbohydrates in this entry.

6.4 Ligands ⓘ

In the following table, the Atoms column lists the number of modelled atoms in the group and the number defined in the chemical component dictionary. LLDF column lists the quality of electron density of the group with respect to its neighbouring residues in protein, DNA or RNA chains. The B-factors column lists the minimum, median, 95th percentile and maximum values of B factors of atoms in the group. The column labelled 'Q< 0.9' lists the number of atoms with occupancy less than 0.9.

Mol	Type	Chain	Res	Atoms	RSR	LLDF	B-factors(Å ²)	Q<0.9
3	NO3	A	1303	4/4	0.20	10.01	35,37,37,37	0
3	NO3	B	1301	4/4	0.23	6.39	46,47,47,47	0
4	AMP	A	997	23/23	0.20	2.48	12,14,20,21	4
6	EDO	A	1003	4/4	0.16	2.16	28,28,30,30	0
4	AMP	B	999	23/23	0.14	1.82	12,13,25,25	4
3	NO3	B	1302	4/4	0.17	1.35	25,25,26,26	0
2	MG	B	1002	1/1	0.15	0.30	54,54,54,54	0
5	01A	B	991	58/58	0.12	0.23	14,20,33,33	0
5	01A	A	990	58/58	0.11	-0.28	15,20,30,31	0
2	MG	A	1001	1/1	0.05	-1.83	44,44,44,44	0

6.5 Other polymers ⓘ

There are no such residues in this entry.