



Full wwPDB X-ray Structure Validation Report ⓘ

Mar 1, 2014 – 12:58 AM GMT

PDB ID : 1D0I
Title : CRYSTAL STRUCTURE OF TYPE II DEHYDROQUINASE FROM STREPTOMYCES COELICOLOR COMPLEXED WITH PHOSPHATE IONS
Authors : Roszak, A.W.; Krell, T.; Hunter, I.S.; Coggins, J.R.; Lapthorn, A.J.
Deposited on : 1999-09-10
Resolution : 1.80 Å(reported)

This is a full wwPDB validation report for a publicly released PDB entry.
We welcome your comments at validation@mail.wwpdb.org
A user guide is available at <http://wwpdb.org/ValidationPDFNotes.html>

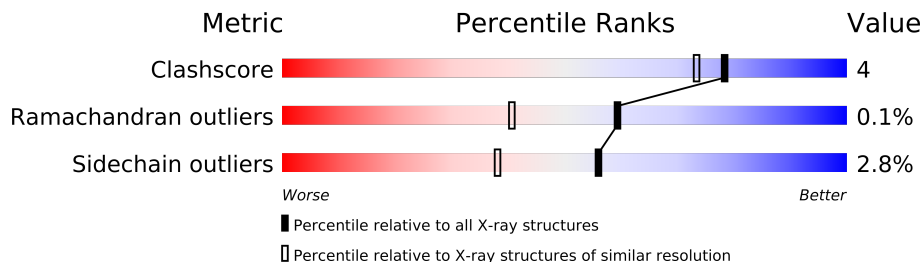
The following versions of software and data (see [references](#)) were used in the production of this report:

MolProbity : 4.02b-467
Mogul : 1.15 2013
Xtriage (Phenix) : NOT EXECUTED
EDS : NOT EXECUTED
Percentile statistics : 21963
Ideal geometry (proteins) : Engh & Huber (2001)
Ideal geometry (DNA, RNA) : Parkinson et. al. (1996)
Validation Pipeline (wwPDB-VP) : stable22683

1 Overall quality at a glance

The reported resolution of this entry is 1.80 Å.

Percentile scores (ranging between 0-100) for global validation metrics of the entry are shown in the following graphic. The table shows the number of entries on which the scores are based.



Metric	Whole archive (#Entries)	Similar resolution (#Entries, resolution range(Å))
Clashscore	79885	4461 (1.80-1.80)
Ramachandran outliers	78287	4404 (1.80-1.80)
Sidechain outliers	78261	4403 (1.80-1.80)

The table below summarises the geometric issues observed across the polymeric chains and their fit to the electron density. The red, orange, yellow and green segments on the lower bar indicate the fraction of residues that contain outliers for ≥ 3 , 2, 1 and 0 types of geometric quality criteria. The upper red bar (where present) indicates the fraction of residues that have poor fit to the electron density.

Note EDS was not executed.

Mol	Chain	Length	Quality of chain
1	A	156	
1	B	156	
1	C	156	
1	D	156	
1	E	156	
1	F	156	
1	G	156	
1	H	156	
1	I	156	
1	J	156	
1	K	156	
1	L	156	

2 Entry composition

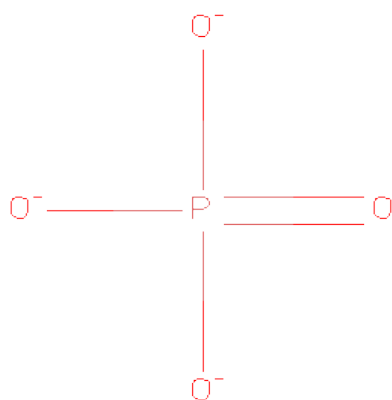
There are 4 unique types of molecules in this entry. The entry contains 15962 atoms, of which 0 are hydrogen and 0 are deuterium.

In the tables below, the ZeroOcc column contains the number of atoms modelled with zero occupancy, the AltConf column contains the number of residues with at least one atom in alternate conformation and the Trace column contains the number of residues modelled with at most 2 atoms.

- Molecule 1 is a protein called TYPE II 3-DEHYDROQUINATE HYDRATASE.

Mol	Chain	Residues	Atoms					ZeroOcc	AltConf	Trace
1	A	150	Total	C	N	O	S	0	5	0
			1153	716	218	213	6			
1	B	150	Total	C	N	O	S	0	3	0
			1143	711	215	211	6			
1	C	150	Total	C	N	O	S	0	5	0
			1143	711	210	216	6			
1	D	151	Total	C	N	O	S	0	6	0
			1154	717	214	217	6			
1	E	152	Total	C	N	O	S	0	5	0
			1157	718	220	213	6			
1	F	151	Total	C	N	O	S	0	4	0
			1152	716	216	214	6			
1	G	151	Total	C	N	O	S	0	4	0
			1152	716	217	213	6			
1	H	153	Total	C	N	O	S	0	5	0
			1168	724	221	217	6			
1	I	150	Total	C	N	O	S	0	4	0
			1144	711	212	215	6			
1	J	150	Total	C	N	O	S	0	7	0
			1160	721	219	214	6			
1	K	151	Total	C	N	O	S	0	5	0
			1153	716	216	215	6			
1	L	151	Total	C	N	O	S	0	3	0
			1148	714	216	212	6			

- Molecule 2 is PHOSPHATE ION (three-letter code: PO4) (formula: O₄P).



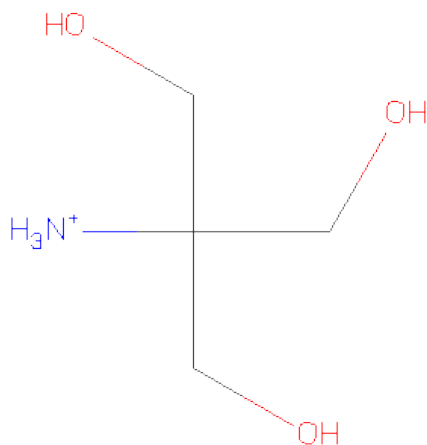
Mol	Chain	Residues	Atoms			ZeroOcc	AltConf
2	A	1	Total	O	P	0	0
			5	4	1		
2	A	1	Total	O	P	0	0
			5	4	1		
2	B	1	Total	O	P	0	0
			5	4	1		
2	C	1	Total	O	P	0	0
			5	4	1		
2	D	1	Total	O	P	0	0
			5	4	1		
2	E	1	Total	O	P	0	0
			5	4	1		
2	E	1	Total	O	P	0	0
			5	4	1		
2	F	1	Total	O	P	0	0
			5	4	1		
2	G	1	Total	O	P	0	0
			5	4	1		
2	G	1	Total	O	P	0	0
			5	4	1		
2	H	1	Total	O	P	0	0
			5	4	1		
2	I	1	Total	O	P	0	0
			5	4	1		
2	J	1	Total	O	P	0	0
			5	4	1		
2	K	1	Total	O	P	0	0
			5	4	1		

Continued on next page...

Continued from previous page...

Mol	Chain	Residues	Atoms			ZeroOcc	AltConf
2	K	1	Total	O	P	0	0
			5	4	1		
2	L	1	Total	O	P	0	0
			5	4	1		

- Molecule 3 is 2-AMINO-2-HYDROXYMETHYL-PROPANE-1,3-DIOL (three-letter code: TRS) (formula: C₄H₁₂NO₃).



Mol	Chain	Residues	Atoms				ZeroOcc	AltConf
3	A	1	Total	C	N	O	0	0
			8	4	1	3		
3	D	1	Total	C	N	O	0	0
			8	4	1	3		
3	G	1	Total	C	N	O	0	0
			8	4	1	3		
3	J	1	Total	C	N	O	0	0
			8	4	1	3		

- Molecule 4 is water.

Mol	Chain	Residues	Atoms		ZeroOcc	AltConf
4	A	194	Total	O	0	0
			194	194		
4	B	139	Total	O	0	0
			139	139		
4	C	114	Total	O	0	0
			114	114		

Continued on next page...

Continued from previous page...

Mol	Chain	Residues	Atoms		ZeroOcc	AltConf
4	D	171	Total 171	O 171	0	0
4	E	205	Total 205	O 205	0	0
4	F	174	Total 174	O 174	0	0
4	G	205	Total 205	O 205	0	0
4	H	190	Total 190	O 190	0	0
4	I	197	Total 197	O 197	0	0
4	J	116	Total 116	O 116	0	0
4	K	183	Total 183	O 183	0	0
4	L	135	Total 135	O 135	0	0

3 Residue-property plots

These plots are drawn for all protein, RNA and DNA chains in the entry. The first graphic for a chain summarises the proportions of errors displayed in the second graphic. The second graphic shows the sequence view annotated by issues in geometry and electron density. Residues are color-coded according to the number of geometric quality criteria for which they contain at least one outlier: green = 0, yellow = 1, orange = 2 and red = 3 or more. A red dot above a residue indicates a poor fit to the electron density ($RSRZ > 2$). Stretches of 2 or more consecutive residues without any outlier are shown as a green connector. Residues present in the sample, but not in the model, are shown in grey.

Note EDS was not executed.

- Molecule 1: TYPE II 3-DEHYDROQUINATE HYDRATASE

Chain A: 



- Molecule 1: TYPE II 3-DEHYDROQUINATE HYDRATASE

Chain B: 



- Molecule 1: TYPE II 3-DEHYDROQUINATE HYDRATASE

Chain C: 



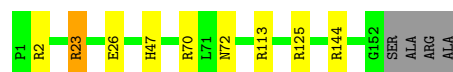
- Molecule 1: TYPE II 3-DEHYDROQUINATE HYDRATASE

Chain D: 



- Molecule 1: TYPE II 3-DEHYDROQUINATE HYDRATASE

Chain E: 



- Molecule 1: TYPE II 3-DEHYDROQUINATE HYDRATASE

Chain F: 



• Molecule 1: TYPE II 3-DEHYDROQUINATE HYDRATASE

Chain G: 

• Molecule 1: TYPE II 3-DEHYDROQUINATE HYDRATASE

Chain H: 

• Molecule 1: TYPE II 3-DEHYDROQUINATE HYDRATASE

Chain I: 

• Molecule 1: TYPE II 3-DEHYDROQUINATE HYDRATASE

Chain J: 

• Molecule 1: TYPE II 3-DEHYDROQUINATE HYDRATASE

Chain K: 

• Molecule 1: TYPE II 3-DEHYDROQUINATE HYDRATASE

Chain L: 

4 Data and refinement statistics

Xtriage (Phenix) and EDS were not executed - this section will therefore be incomplete.

Property	Value	Source
Space group	P 21 21 21	Depositor
Cell constants a, b, c, α , β , γ	113.20Å 137.50Å 140.20Å 90.00° 90.00° 90.00°	Depositor
Resolution (Å)	45.03 – 1.80	Depositor
% Data completeness (in resolution range)	98.7 (45.03-1.80)	Depositor
R_{merge}	0.05	Depositor
R_{sym}	(Not available)	Depositor
Refinement program	REFMAC	Depositor
R, R_{free}	0.171 , 0.223	Depositor
Estimated twinning fraction	No twinning to report.	Xtriage
Total number of atoms	15962	wwPDB-VP
Average B, all atoms (Å ²)	30.0	wwPDB-VP

5 Model quality ⓘ

5.1 Standard geometry ⓘ

Bond lengths and bond angles in the following residue types are not validated in this section: PO4, TRS

The Z score for a bond length (or angle) is the number of standard deviations the observed value is removed from the expected value. A bond length (or angle) with $|Z| > 5$ is considered an outlier worth inspection. RMSZ is the root-mean-square of all Z scores of the bond lengths (or angles).

Mol	Chain	Bond lengths		Bond angles	
		RMSZ	$\# Z > 5$	RMSZ	$\# Z > 5$
1	A	0.74	0/1202	1.57	13/1634 (0.8%)
1	B	0.72	0/1182	1.50	11/1608 (0.7%)
1	C	0.68	0/1192	1.52	9/1623 (0.6%)
1	D	0.77	0/1208	1.43	11/1644 (0.7%)
1	E	0.84	0/1207	1.55	10/1641 (0.6%)
1	F	0.76	0/1196	1.56	17/1627 (1.0%)
1	G	0.86	0/1196	1.57	17/1627 (1.0%)
1	H	0.75	0/1217	1.65	19/1654 (1.1%)
1	I	0.84	0/1189	1.67	16/1619 (1.0%)
1	J	1.51	10/1219 (0.8%)	1.98	37/1657 (2.2%)
1	K	0.83	0/1202	1.59	14/1635 (0.9%)
1	L	0.75	0/1187	1.48	14/1615 (0.9%)
All	All	0.86	10/14397 (0.1%)	1.60	188/19584 (1.0%)

Chiral center outliers are detected by calculating the chiral volume of a chiral center and verifying if the center is modelled as a planar moiety or with the opposite hand. A planarity outlier is detected by checking planarity of atoms in a peptide group, atoms in a mainchain group or atoms of a sidechain that are expected to be planar.

Mol	Chain	#Chirality outliers	#Planarity outliers
1	E	0	1

All (10) bond length outliers are listed below:

Mol	Chain	Res	Type	Atoms	Z	Observed(Å)	Ideal(Å)
1	J	71[A]	LEU	CB-CG	22.81	2.18	1.52
1	J	71[B]	LEU	CB-CG	22.81	2.18	1.52
1	J	71[A]	LEU	CG-CD1	13.03	2.00	1.51
1	J	71[B]	LEU	CG-CD1	13.03	2.00	1.51
1	J	71[A]	LEU	CA-CB	12.95	1.83	1.53
1	J	71[B]	LEU	CA-CB	12.95	1.83	1.53

Continued on next page...

Continued from previous page...

Mol	Chain	Res	Type	Atoms	Z	Observed(Å)	Ideal(Å)
1	J	71[A]	LEU	CG-CD2	12.81	1.99	1.51
1	J	71[B]	LEU	CG-CD2	12.81	1.99	1.51
1	J	71[A]	LEU	N-CA	5.05	1.56	1.46
1	J	71[B]	LEU	N-CA	5.05	1.56	1.46

All (188) bond angle outliers are listed below:

Mol	Chain	Res	Type	Atoms	Z	Observed(°)	Ideal(°)
1	J	71[A]	LEU	CA-CB-CG	-25.16	57.44	115.30
1	J	71[B]	LEU	CA-CB-CG	-25.16	57.44	115.30
1	F	117	ARG	NE-CZ-NH2	-17.65	111.48	120.30
1	K	144[A]	ARG	NE-CZ-NH2	-16.28	112.16	120.30
1	K	144[B]	ARG	NE-CZ-NH2	-16.28	112.16	120.30
1	I	144[A]	ARG	NE-CZ-NH2	-16.23	112.19	120.30
1	I	144[B]	ARG	NE-CZ-NH2	-16.23	112.19	120.30
1	H	144[A]	ARG	NE-CZ-NH2	-14.86	112.87	120.30
1	H	144[B]	ARG	NE-CZ-NH2	-14.86	112.87	120.30
1	C	117	ARG	NE-CZ-NH2	-14.84	112.88	120.30
1	H	144[A]	ARG	NE-CZ-NH1	13.81	127.21	120.30
1	H	144[B]	ARG	NE-CZ-NH1	13.81	127.21	120.30
1	B	117	ARG	NE-CZ-NH2	-13.25	113.67	120.30
1	A	144[A]	ARG	NE-CZ-NH1	-13.25	113.67	120.30
1	A	144[B]	ARG	NE-CZ-NH1	-13.25	113.67	120.30
1	J	71[A]	LEU	CB-CA-C	12.94	134.79	110.20
1	J	71[B]	LEU	CB-CA-C	12.94	134.79	110.20
1	A	144[A]	ARG	NE-CZ-NH2	12.84	126.72	120.30
1	A	144[B]	ARG	NE-CZ-NH2	12.84	126.72	120.30
1	I	144[A]	ARG	NE-CZ-NH1	12.77	126.69	120.30
1	I	144[B]	ARG	NE-CZ-NH1	12.77	126.69	120.30
1	C	70	ARG	CD-NE-CZ	12.58	141.21	123.60
1	I	2	ARG	NE-CZ-NH1	-12.27	114.16	120.30
1	J	71[A]	LEU	CD1-CG-CD2	11.46	144.88	110.50
1	J	71[B]	LEU	CD1-CG-CD2	11.46	144.88	110.50
1	E	144[A]	ARG	NE-CZ-NH1	11.22	125.91	120.30
1	E	144[B]	ARG	NE-CZ-NH1	11.22	125.91	120.30
1	E	144[A]	ARG	NE-CZ-NH2	-11.01	114.80	120.30
1	E	144[B]	ARG	NE-CZ-NH2	-11.01	114.80	120.30
1	J	117	ARG	NE-CZ-NH2	-11.00	114.80	120.30
1	H	70[A]	ARG	CD-NE-CZ	10.56	138.39	123.60
1	H	70[B]	ARG	CD-NE-CZ	10.56	138.39	123.60
1	G	117	ARG	NE-CZ-NH2	-10.44	115.08	120.30
1	J	70[A]	ARG	CA-C-N	10.39	140.06	117.20

Continued on next page...

Continued from previous page...

Mol	Chain	Res	Type	Atoms	Z	Observed(°)	Ideal(°)
1	J	70[B]	ARG	CA-C-N	10.39	140.06	117.20
1	I	70	ARG	NE-CZ-NH2	10.32	125.46	120.30
1	J	127	ASP	CB-CG-OD2	9.91	127.22	118.30
1	I	54	ARG	NE-CZ-NH2	9.66	125.13	120.30
1	H	23	ARG	NE-CZ-NH2	9.56	125.08	120.30
1	J	71[A]	LEU	CB-CG-CD1	-9.52	94.82	111.00
1	J	71[B]	LEU	CB-CG-CD1	-9.52	94.82	111.00
1	I	70	ARG	CD-NE-CZ	9.46	136.85	123.60
1	G	144[A]	ARG	NE-CZ-NH2	-9.17	115.71	120.30
1	G	144[B]	ARG	NE-CZ-NH2	-9.17	115.71	120.30
1	K	144[A]	ARG	NE-CZ-NH1	9.13	124.86	120.30
1	K	144[B]	ARG	NE-CZ-NH1	9.13	124.86	120.30
1	B	70[A]	ARG	CD-NE-CZ	9.11	136.35	123.60
1	B	70[B]	ARG	CD-NE-CZ	9.11	136.35	123.60
1	E	70[A]	ARG	CD-NE-CZ	9.01	136.22	123.60
1	E	70[B]	ARG	CD-NE-CZ	9.01	136.22	123.60
1	K	70[A]	ARG	CD-NE-CZ	9.00	136.21	123.60
1	K	70[B]	ARG	CD-NE-CZ	9.00	136.21	123.60
1	H	117	ARG	NE-CZ-NH2	-8.97	115.81	120.30
1	D	127	ASP	CB-CG-OD2	8.84	126.25	118.30
1	F	125	ARG	NE-CZ-NH1	8.76	124.68	120.30
1	A	70[A]	ARG	CD-NE-CZ	8.69	135.77	123.60
1	A	70[B]	ARG	CD-NE-CZ	8.69	135.77	123.60
1	G	70[A]	ARG	CD-NE-CZ	8.69	135.76	123.60
1	G	70[B]	ARG	CD-NE-CZ	8.69	135.76	123.60
1	J	113	ARG	NE-CZ-NH2	-8.68	115.96	120.30
1	G	23	ARG	NE-CZ-NH2	8.12	124.36	120.30
1	L	23	ARG	NE-CZ-NH1	-8.05	116.28	120.30
1	G	144[A]	ARG	NE-CZ-NH1	8.05	124.32	120.30
1	G	144[B]	ARG	NE-CZ-NH1	8.05	124.32	120.30
1	L	23	ARG	NE-CZ-NH2	7.99	124.30	120.30
1	F	64	ASP	CB-CG-OD1	7.73	125.26	118.30
1	J	71[A]	LEU	CB-CG-CD2	-7.72	97.87	111.00
1	J	71[B]	LEU	CB-CG-CD2	-7.72	97.87	111.00
1	F	117	ARG	NH1-CZ-NH2	7.70	127.87	119.40
1	C	70	ARG	NE-CZ-NH2	7.68	124.14	120.30
1	F	127	ASP	CB-CG-OD2	7.62	125.16	118.30
1	F	31	ASP	CB-CG-OD2	-7.61	111.45	118.30
1	A	117	ARG	NE-CZ-NH2	-7.59	116.50	120.30
1	A	121	TYR	CB-CG-CD1	-7.49	116.51	121.00
1	D	70	ARG	CD-NE-CZ	7.49	134.08	123.60
1	H	70[A]	ARG	NE-CZ-NH2	7.42	124.01	120.30

Continued on next page...

Continued from previous page...

Mol	Chain	Res	Type	Atoms	Z	Observed(°)	Ideal(°)
1	H	70[B]	ARG	NE-CZ-NH2	7.42	124.01	120.30
1	I	2	ARG	NH1-CZ-NH2	7.35	127.48	119.40
1	C	117	ARG	NH1-CZ-NH2	7.17	127.29	119.40
1	B	52	ASP	CB-CG-OD2	-7.03	111.97	118.30
1	G	125	ARG	NE-CZ-NH1	6.99	123.79	120.30
1	J	70[A]	ARG	O-C-N	-6.96	111.56	122.70
1	J	70[B]	ARG	O-C-N	-6.96	111.56	122.70
1	D	144[A]	ARG	NE-CZ-NH2	-6.93	116.83	120.30
1	D	144[B]	ARG	NE-CZ-NH2	-6.93	116.83	120.30
1	L	127	ASP	CB-CG-OD1	-6.91	112.08	118.30
1	F	125	ARG	CD-NE-CZ	6.80	133.12	123.60
1	H	52	ASP	CB-CG-OD1	6.76	124.38	118.30
1	C	113	ARG	NE-CZ-NH2	-6.72	116.94	120.30
1	G	127	ASP	CB-CA-C	6.71	123.81	110.40
1	B	23	ARG	NE-CZ-NH1	6.67	123.63	120.30
1	F	23	ARG	NE-CZ-NH2	6.57	123.58	120.30
1	G	121	TYR	CB-CG-CD1	-6.55	117.07	121.00
1	A	70[A]	ARG	NE-CZ-NH2	6.50	123.55	120.30
1	A	70[B]	ARG	NE-CZ-NH2	6.50	123.55	120.30
1	F	113	ARG	NE-CZ-NH1	6.50	123.55	120.30
1	J	127	ASP	CB-CG-OD1	-6.47	112.47	118.30
1	F	23	ARG	NE-CZ-NH1	-6.46	117.07	120.30
1	L	92	ASP	CB-CG-OD2	-6.43	112.52	118.30
1	F	70[A]	ARG	NE-CZ-NH2	6.41	123.51	120.30
1	F	70[B]	ARG	NE-CZ-NH2	6.41	123.51	120.30
1	E	113	ARG	NE-CZ-NH2	6.40	123.50	120.30
1	K	117	ARG	NE-CZ-NH2	-6.37	117.12	120.30
1	B	53	PHE	CB-CG-CD2	-6.35	116.36	120.80
1	I	117	ARG	NE-CZ-NH2	-6.34	117.13	120.30
1	D	31	ASP	CB-CG-OD2	-6.34	112.60	118.30
1	A	35	ASP	CB-CG-OD2	6.33	124.00	118.30
1	L	70[A]	ARG	NE-CZ-NH1	6.33	123.46	120.30
1	L	70[B]	ARG	NE-CZ-NH1	6.33	123.46	120.30
1	I	127	ASP	CB-CG-OD2	6.32	123.99	118.30
1	D	138	TYR	CB-CG-CD2	-6.29	117.22	121.00
1	D	54	ARG	NE-CZ-NH2	6.21	123.41	120.30
1	B	114	GLU	OE1-CD-OE2	-6.13	115.94	123.30
1	J	71[A]	LEU	N-CA-C	-6.13	94.45	111.00
1	J	71[B]	LEU	N-CA-C	-6.13	94.45	111.00
1	L	117	ARG	NE-CZ-NH1	-6.13	117.24	120.30
1	I	2	ARG	CG-CD-NE	-6.07	99.05	111.80
1	L	125	ARG	NE-CZ-NH2	6.04	123.32	120.30

Continued on next page...

Continued from previous page...

Mol	Chain	Res	Type	Atoms	Z	Observed(°)	Ideal(°)
1	J	144[A]	ARG	NE-CZ-NH2	-5.97	117.32	120.30
1	J	144[B]	ARG	NE-CZ-NH2	-5.97	117.32	120.30
1	F	70[A]	ARG	CD-NE-CZ	5.96	131.94	123.60
1	F	70[B]	ARG	CD-NE-CZ	5.96	131.94	123.60
1	H	70[A]	ARG	CG-CD-NE	5.93	124.26	111.80
1	H	70[B]	ARG	CG-CD-NE	5.93	124.26	111.80
1	B	117	ARG	NH1-CZ-NH2	5.93	125.92	119.40
1	G	127	ASP	O-C-N	-5.92	113.14	123.20
1	H	35	ASP	CB-CG-OD2	-5.88	113.01	118.30
1	C	117	ARG	CG-CD-NE	-5.83	99.56	111.80
1	C	61	GLU	OE1-CD-OE2	5.78	130.24	123.30
1	C	144[A]	ARG	NE-CZ-NH2	-5.77	117.41	120.30
1	C	144[B]	ARG	NE-CZ-NH2	-5.77	117.41	120.30
1	D	138	TYR	CB-CG-CD1	5.75	124.45	121.00
1	E	125	ARG	NE-CZ-NH2	-5.75	117.43	120.30
1	J	54	ARG	NE-CZ-NH1	-5.74	117.43	120.30
1	A	125	ARG	CD-NE-CZ	5.72	131.60	123.60
1	E	47	HIS	CA-CB-CG	-5.71	103.89	113.60
1	L	117	ARG	CG-CD-NE	-5.70	99.83	111.80
1	J	70[A]	ARG	CA-C-O	-5.69	108.14	120.10
1	J	70[B]	ARG	CA-C-O	-5.69	108.14	120.10
1	K	54	ARG	NE-CZ-NH1	5.67	123.13	120.30
1	K	23	ARG	CD-NE-CZ	5.66	131.53	123.60
1	K	125	ARG	NE-CZ-NH1	5.66	123.13	120.30
1	A	52	ASP	CB-CG-OD1	5.66	123.39	118.30
1	D	70	ARG	NE-CZ-NH2	5.57	123.08	120.30
1	I	23	ARG	NE-CZ-NH2	5.54	123.07	120.30
1	H	125	ARG	NE-CZ-NH1	5.54	123.07	120.30
1	K	72	ASN	N-CA-CB	-5.54	100.64	110.60
1	H	54	ARG	NE-CZ-NH2	-5.53	117.53	120.30
1	E	23	ARG	CD-NE-CZ	5.53	131.34	123.60
1	F	35	ASP	CB-CG-OD2	-5.52	113.33	118.30
1	B	149	ALA	CB-CA-C	5.52	118.37	110.10
1	B	64	ASP	CB-CG-OD1	5.51	123.26	118.30
1	D	92	ASP	CB-CG-OD2	5.51	123.26	118.30
1	G	121	TYR	CB-CG-CD2	5.50	124.30	121.00
1	G	35	ASP	CB-CG-OD2	-5.50	113.35	118.30
1	J	54	ARG	NE-CZ-NH2	-5.48	117.56	120.30
1	J	70[A]	ARG	CD-NE-CZ	5.46	131.24	123.60
1	J	70[B]	ARG	CD-NE-CZ	5.46	131.24	123.60
1	J	71[A]	LEU	O-C-N	-5.44	113.99	122.70
1	J	71[B]	LEU	O-C-N	-5.44	113.99	122.70

Continued on next page...

Continued from previous page...

Mol	Chain	Res	Type	Atoms	Z	Observed(°)	Ideal(°)
1	H	52	ASP	CB-CG-OD2	-5.43	113.41	118.30
1	J	23[A]	ARG	NE-CZ-NH1	5.43	123.02	120.30
1	J	23[B]	ARG	NE-CZ-NH1	5.43	123.02	120.30
1	G	124[A]	GLN	CA-CB-CG	5.43	125.34	113.40
1	G	124[B]	GLN	CA-CB-CG	5.43	125.34	113.40
1	I	2	ARG	CD-NE-CZ	5.33	131.06	123.60
1	L	138	TYR	CB-CG-CD2	-5.32	117.81	121.00
1	J	68	GLU	O-C-N	-5.30	114.22	122.70
1	K	83	TYR	CB-CG-CD2	5.29	124.17	121.00
1	L	52	ASP	CB-CG-OD2	-5.28	113.55	118.30
1	J	105	VAL	CA-CB-CG1	5.26	118.79	110.90
1	H	24	GLN	CB-CG-CD	5.25	125.25	111.60
1	F	82	ALA	CB-CA-C	-5.25	102.23	110.10
1	L	127	ASP	CB-CG-OD2	5.22	123.00	118.30
1	J	8	PRO	O-C-N	5.17	130.97	122.70
1	B	125	ARG	NE-CZ-NH2	5.16	122.88	120.30
1	L	121	TYR	CB-CG-CD2	5.14	124.08	121.00
1	F	124	GLN	OE1-CD-NE2	5.12	133.68	121.90
1	G	127	ASP	CB-CG-OD1	-5.11	113.70	118.30
1	I	64	ASP	CB-CG-OD1	5.11	122.90	118.30
1	J	54	ARG	NH1-CZ-NH2	5.10	125.01	119.40
1	L	106	HIS	CA-CB-CG	-5.10	104.94	113.60
1	D	127	ASP	CB-CA-C	5.08	120.56	110.40
1	I	127	ASP	CB-CA-C	5.08	120.55	110.40
1	J	2	ARG	NE-CZ-NH2	-5.05	117.78	120.30
1	H	23	ARG	NE-CZ-NH1	-5.02	117.79	120.30
1	K	125	ARG	NE-CZ-NH2	-5.01	117.80	120.30
1	K	42	LYS	CG-CD-CE	5.00	126.91	111.90

There are no chirality outliers.

All (1) planarity outliers are listed below:

Mol	Chain	Res	Type	Group
1	E	72	ASN	Mainchain

5.2 Close contacts ⓘ

In the following table, the Non-H and H(model) columns list the number of non-hydrogen atoms and hydrogen atoms in the chain respectively. The H(added) column lists the number of hydrogens added by MolProbity. The Clashes column lists the number of clashes within the asymmetric unit, and the number in parentheses is this value normalized per 1000 atoms of the molecule in the

chain. The Symm-Clashes column gives symmetry related clashes, in the same way as for the Clashes column.

Mol	Chain	Non-H	H(model)	H(added)	Clashes	Symm-Clashes
1	A	1153	0	0	3	0
1	B	1143	0	0	2	0
1	C	1143	0	0	5	0
1	D	1154	0	0	4	0
1	E	1157	0	0	0	0
1	F	1152	0	0	1	0
1	G	1152	0	0	1	0
1	H	1168	0	0	2	0
1	I	1144	0	0	7	0
1	J	1160	0	0	17	0
1	K	1153	0	0	4	0
1	L	1148	0	0	3	0
2	A	10	0	0	1	0
2	B	5	0	0	0	0
2	C	5	0	0	1	0
2	D	5	0	0	0	0
2	E	10	0	0	0	0
2	F	5	0	0	0	0
2	G	10	0	0	0	0
2	H	5	0	0	0	0
2	I	5	0	0	0	0
2	J	5	0	0	1	0
2	K	10	0	0	0	0
2	L	5	0	0	1	0
3	A	8	0	0	0	0
3	D	8	0	0	0	0
3	G	8	0	0	0	0
3	J	8	0	0	0	0
4	A	194	0	0	1	0
4	B	139	0	0	0	0
4	C	114	0	0	2	0
4	D	171	0	0	1	0
4	E	205	0	0	0	0
4	F	174	0	0	0	0
4	G	205	0	0	0	0
4	H	190	0	0	2	0
4	I	197	0	0	3	0
4	J	116	0	0	1	0
4	K	183	0	0	2	0
4	L	135	0	0	0	0
All	All	15962	0	0	49	0

Clashscore is defined as the number of clashes calculated for the entry per 1000 atoms (including hydrogens) of the entry. The overall clashscore for this entry is 4.

All (49) close contacts within the same asymmetric unit are listed below.

Atom-1	Atom-2	Distance(Å)	Clash(Å)
1:J:71[A]:LEU:CD2	1:J:71[A]:LEU:CG	1.99	1.41
1:J:71[A]:LEU:CD1	1:J:71[A]:LEU:CG	2.00	1.39
1:J:71[B]:LEU:CD1	1:J:71[B]:LEU:CG	2.07	1.33
1:K:143[B]:GLU:OE2	4:K:3179:HOH:O	1.61	1.17
1:C:124[B]:GLN:OE1	4:C:1850:HOH:O	1.70	1.06
1:K:143[B]:GLU:OE1	4:K:3178:HOH:O	1.75	1.02
1:H:143[B]:GLU:OE1	4:H:3020:HOH:O	1.93	0.84
1:C:124[B]:GLN:CG	4:C:1895:HOH:O	2.31	0.78
1:A:143[A]:GLU:OE1	4:A:3360:HOH:O	1.99	0.78
1:D:143[B]:GLU:OE1	4:D:3312:HOH:O	2.03	0.76
1:I:143[B]:GLU:OE1	4:I:3018:HOH:O	2.09	0.71
1:I:114[A]:GLU:OE2	1:I:117:ARG:NE	2.28	0.66
1:F:143[B]:GLU:OE1	4:H:3020:HOH:O	2.14	0.65
1:J:71[A]:LEU:CD2	1:J:72:ASN:ND2	2.66	0.59
1:D:10[A]:MET:SD	1:D:12:LEU:CD2	2.95	0.55
1:L:114:GLU:OE2	1:L:117:ARG:NE	2.42	0.53
1:I:10[A]:MET:SD	1:I:12:LEU:CD2	2.98	0.52
1:I:97:CYS:SG	4:I:3093:HOH:O	2.59	0.52
1:I:99:GLY:N	4:I:3093:HOH:O	2.44	0.50
1:J:114:GLU:OE1	1:J:117:ARG:NE	2.44	0.50
1:J:10[A]:MET:SD	1:J:12:LEU:CD2	3.01	0.49
1:D:23:ARG:O	1:D:24:GLN:C	2.49	0.48
1:A:58:HIS:ND1	2:A:3002:PO4:O1	2.46	0.48
1:B:114:GLU:OE1	1:B:117:ARG:NE	2.46	0.47
1:B:23:ARG:O	1:B:24:GLN:C	2.53	0.46
1:K:23:ARG:O	1:K:24:GLN:C	2.53	0.46
1:C:23:ARG:O	1:C:24:GLN:C	2.53	0.46
1:I:47:HIS:NE2	1:I:143[A]:GLU:OE1	2.49	0.45
1:D:114:GLU:OE1	1:D:117:ARG:NE	2.49	0.44
1:A:16:ASN:O	1:A:23:ARG:NH1	2.51	0.44
1:L:23:ARG:O	1:L:24:GLN:C	2.57	0.43
1:C:106:HIS:ND1	2:C:3004:PO4:O1	2.52	0.42
1:J:106:HIS:ND1	2:J:3013:PO4:O1	2.52	0.42
1:G:47:HIS:NE2	1:G:143:GLU:OE2	2.52	0.42
1:C:47:HIS:NE2	1:C:143[A]:GLU:OE1	2.53	0.41
1:L:106:HIS:ND1	2:L:3016:PO4:O1	2.53	0.41
1:I:23:ARG:O	1:I:24:GLN:C	2.60	0.41
1:J:117:ARG:NH1	4:J:694:HOH:O	2.54	0.40

There are no symmetry-related clashes.

5.3 Torsion angles

5.3.1 Protein backbone ⓘ

In the following table, the Percentiles column shows the percent Ramachandran outliers of the chain as a percentile score with respect to all X-ray entries followed by that with respect to entries of similar resolution. The Analysed column shows the number of residues for which the backbone conformation was analysed, and the total number of residues.

Mol	Chain	Analysed	Favoured	Allowed	Outliers	Percentiles	
1	A	153/156 (98%)	151 (99%)	2 (1%)	0	100	100
1	B	151/156 (97%)	147 (97%)	4 (3%)	0	100	100
1	C	153/156 (98%)	149 (97%)	4 (3%)	0	100	100
1	D	155/156 (99%)	149 (96%)	5 (3%)	1 (1%)	33	15
1	E	155/156 (99%)	151 (97%)	4 (3%)	0	100	100
1	F	153/156 (98%)	149 (97%)	4 (3%)	0	100	100
1	G	153/156 (98%)	148 (97%)	5 (3%)	0	100	100
1	H	156/156 (100%)	150 (96%)	6 (4%)	0	100	100
1	I	152/156 (97%)	148 (97%)	4 (3%)	0	100	100
1	J	155/156 (99%)	151 (97%)	4 (3%)	0	100	100
1	K	154/156 (99%)	150 (97%)	4 (3%)	0	100	100
1	L	152/156 (97%)	148 (97%)	4 (3%)	0	100	100
All	All	1842/1872 (98%)	1791 (97%)	50 (3%)	1 (0%)	59	41

All (1) Ramachandran outliers are listed below:

Mol	Chain	Res	Type
1	D	150	GLY

5.3.2 Protein sidechains ⓘ

In the following table, the Percentiles column shows the percent sidechain outliers of the chain as a percentile score with respect to all X-ray entries followed by that with respect to entries of similar resolution. The Analysed column shows the number of residues for which the sidechain conformation was analysed, and the total number of residues.

Mol	Chain	Analysed	Rotameric	Outliers	Percentiles	
1	A	123/120 (102%)	120 (98%)	3 (2%)	61	44
1	B	121/120 (101%)	119 (98%)	2 (2%)	73	61
1	C	122/120 (102%)	117 (96%)	5 (4%)	41	21
1	D	123/120 (102%)	120 (98%)	3 (2%)	61	44
1	E	122/120 (102%)	118 (97%)	4 (3%)	50	30
1	F	122/120 (102%)	119 (98%)	3 (2%)	60	42
1	G	122/120 (102%)	119 (98%)	3 (2%)	60	42
1	H	124/120 (103%)	119 (96%)	5 (4%)	42	22
1	I	122/120 (102%)	118 (97%)	4 (3%)	50	30
1	J	125/120 (104%)	119 (95%)	6 (5%)	35	15
1	K	123/120 (102%)	120 (98%)	3 (2%)	61	44
1	L	121/120 (101%)	118 (98%)	3 (2%)	60	42
All	All	1470/1440 (102%)	1426 (97%)	44 (3%)	56	34

All (44) residues with a non-rotameric sidechain are listed below:

Mol	Chain	Res	Type
1	A	1	PRO
1	A	23	ARG
1	A	71	LEU
1	B	23	ARG
1	B	26	GLU
1	C	1	PRO
1	C	24	GLN
1	C	26[A]	GLU
1	C	26[B]	GLU
1	C	114	GLU
1	D	2[A]	ARG
1	D	2[B]	ARG
1	D	24	GLN
1	E	2[A]	ARG
1	E	2[B]	ARG
1	E	23	ARG
1	E	26	GLU
1	F	23	ARG
1	F	26	GLU
1	F	71	LEU
1	G	23	ARG
1	G	24	GLN

Continued on next page...

Continued from previous page...

Mol	Chain	Res	Type
1	G	26	GLU
1	H	6	ASN
1	H	18	ASN
1	H	23	ARG
1	H	26	GLU
1	H	153	SER
1	I	23	ARG
1	I	24	GLN
1	I	26	GLU
1	I	98	ASP
1	J	2	ARG
1	J	23[A]	ARG
1	J	23[B]	ARG
1	J	26	GLU
1	J	71[A]	LEU
1	J	71[B]	LEU
1	K	23	ARG
1	K	24	GLN
1	K	26	GLU
1	L	23	ARG
1	L	26	GLU
1	L	115	PRO

Some sidechains can be flipped to improve hydrogen bonding and reduce clashes. There are no such sidechains identified.

5.3.3 RNA ⓘ

There are no RNA chains in this entry.

5.4 Non-standard residues in protein, DNA, RNA chains ⓘ

There are no non-standard protein/DNA/RNA residues in this entry.

5.5 Carbohydrates ⓘ

There are no carbohydrates in this entry.

5.6 Ligand geometry ⓘ

20 ligands are modelled in this entry.

In the following table, the Counts columns list the number of bonds (or angles) for which Mogul statistics could be retrieved, the number of bonds (or angles) that are observed in the model and the number of bonds (or angles) that are defined in the chemical component dictionary. The Link column lists molecule types, if any, to which the group is linked. The Z score for a bond length (or angle) is the number of standard deviations the observed value is removed from the expected value. A bond length (or angle) with $|Z| > 2$ is considered an outlier worth inspection. RMSZ is the root-mean-square of all Z scores of the bond lengths (or angles).

Mol	Type	Chain	Res	Link	Bond lengths			Bond angles		
					Counts	RMSZ	# Z > 2	Counts	RMSZ	# Z > 2
2	PO4	A	3001	-	4,4,4	0.89	0	6,6,6	0.37	0
2	PO4	A	3002	-	4,4,4	0.82	0	6,6,6	0.41	0
3	TRS	A	3301	-	7,7,7	1.23	1 (14%)	9,9,9	1.34	2 (22%)
2	PO4	B	3003	-	4,4,4	0.70	0	6,6,6	0.37	0
2	PO4	C	3004	-	4,4,4	0.67	0	6,6,6	0.36	0
2	PO4	D	3005	-	4,4,4	0.79	0	6,6,6	0.37	0
3	TRS	D	3302	-	7,7,7	1.31	2 (28%)	9,9,9	1.40	2 (22%)
2	PO4	E	3006	-	4,4,4	1.01	0	6,6,6	0.44	0
2	PO4	E	3007	-	4,4,4	1.20	0	6,6,6	0.36	0
2	PO4	F	3008	-	4,4,4	0.56	0	6,6,6	0.32	0
2	PO4	G	3009	-	4,4,4	0.84	0	6,6,6	0.33	0
2	PO4	G	3010	-	4,4,4	1.73	1 (25%)	6,6,6	0.48	0
3	TRS	G	3303	-	7,7,7	1.43	1 (14%)	9,9,9	0.85	0
2	PO4	H	3011	-	4,4,4	0.62	0	6,6,6	0.36	0
2	PO4	I	3012	-	4,4,4	0.74	0	6,6,6	0.35	0
2	PO4	J	3013	-	4,4,4	1.07	0	6,6,6	0.42	0
3	TRS	J	3304	-	7,7,7	1.07	1 (14%)	9,9,9	1.00	0
2	PO4	K	3014	-	4,4,4	1.02	0	6,6,6	0.40	0
2	PO4	K	3015	-	4,4,4	0.60	0	6,6,6	0.33	0
2	PO4	L	3016	-	4,4,4	0.63	0	6,6,6	0.33	0

In the following table, the Chirals column lists the number of chiral outliers, the number of chiral centers analysed, the number of these observed in the model and the number defined in the chemical component dictionary. Similar counts are reported in the Torsion and Rings columns. '-' means no outliers of that kind were identified.

Mol	Type	Chain	Res	Link	Chirals	Torsions	Rings
2	PO4	A	3001	-	-	0/0/0/0	0/0/0/0
2	PO4	A	3002	-	-	0/0/0/0	0/0/0/0
3	TRS	A	3301	-	-	0/9/9/9	0/0/0/0

Continued on next page...

Continued from previous page...

Mol	Type	Chain	Res	Link	Chirals	Torsions	Rings
2	PO4	B	3003	-	-	0/0/0/0	0/0/0/0
2	PO4	C	3004	-	-	0/0/0/0	0/0/0/0
2	PO4	D	3005	-	-	0/0/0/0	0/0/0/0
3	TRS	D	3302	-	-	0/9/9/9	0/0/0/0
2	PO4	E	3006	-	-	0/0/0/0	0/0/0/0
2	PO4	E	3007	-	-	0/0/0/0	0/0/0/0
2	PO4	F	3008	-	-	0/0/0/0	0/0/0/0
2	PO4	G	3009	-	-	0/0/0/0	0/0/0/0
2	PO4	G	3010	-	-	0/0/0/0	0/0/0/0
3	TRS	G	3303	-	-	0/9/9/9	0/0/0/0
2	PO4	H	3011	-	-	0/0/0/0	0/0/0/0
2	PO4	I	3012	-	-	0/0/0/0	0/0/0/0
2	PO4	J	3013	-	-	0/0/0/0	0/0/0/0
3	TRS	J	3304	-	-	0/9/9/9	0/0/0/0
2	PO4	K	3014	-	-	0/0/0/0	0/0/0/0
2	PO4	K	3015	-	-	0/0/0/0	0/0/0/0
2	PO4	L	3016	-	-	0/0/0/0	0/0/0/0

All (6) bond length outliers are listed below:

Mol	Chain	Res	Type	Atoms	Z	Observed(Å)	Ideal(Å)
3	G	3303	TRS	C-N	2.92	1.55	1.50
2	G	3010	PO4	P-O4	2.73	1.63	1.52
3	A	3301	TRS	C-N	2.50	1.54	1.50
3	D	3302	TRS	C2-C	2.18	1.57	1.53
3	D	3302	TRS	C1-C	2.16	1.57	1.53
3	J	3304	TRS	C-N	2.10	1.53	1.50

All (4) bond angle outliers are listed below:

Mol	Chain	Res	Type	Atoms	Z	Observed(°)	Ideal(°)
3	D	3302	TRS	C3-C-N	2.81	115.93	108.30
3	D	3302	TRS	C3-C-C1	-2.23	107.05	110.70
3	A	3301	TRS	O1-C1-C	2.19	116.35	111.55
3	A	3301	TRS	C3-C-C1	-2.06	107.32	110.70

There are no chirality outliers.

There are no torsion outliers.

There are no ring outliers.

5.7 Other polymers ⓘ

There are no such residues in this entry.

5.8 Polymer linkage issues

There are no chain breaks in this entry.

6 Fit of model and data ⓘ

6.1 Protein, DNA and RNA chains ⓘ

EDS was not executed - this section will therefore be empty.

6.2 Non-standard residues in protein, DNA, RNA chains ⓘ

EDS was not executed - this section will therefore be empty.

6.3 Carbohydrates ⓘ

EDS was not executed - this section will therefore be empty.

6.4 Ligands ⓘ

EDS was not executed - this section will therefore be empty.

6.5 Other polymers ⓘ

EDS was not executed - this section will therefore be empty.