



Full wwPDB X-ray Structure Validation Report

Feb 27, 2014 – 03:50 PM GMT

PDB ID : 3D1G
Title : Structure of a small molecule inhibitor bound to a DNA sliding clamp
Authors : Georgescu, R.E.; Yurieva, O.; Seung-Sup, K.; Kuriyan, J.; Kong, X-P.; O'Donnell, M.
Deposited on : 2008-05-05
Resolution : 1.64 Å(reported)

This is a full wwPDB validation report for a publicly released PDB entry.
We welcome your comments at validation@mail.wwpdb.org
A user guide is available at <http://wwpdb.org/ValidationPDFNotes.html>

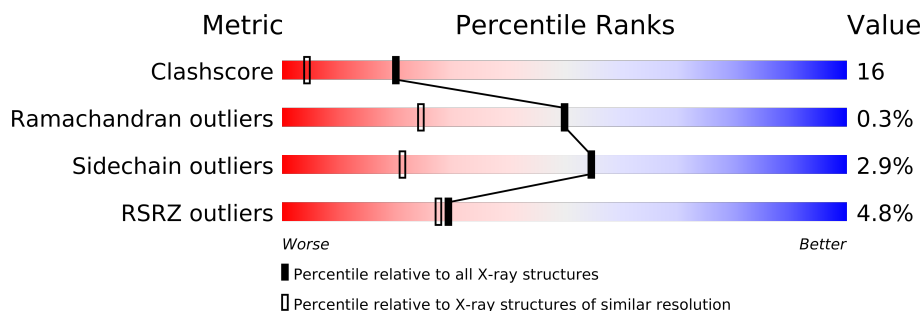
The following versions of software and data (see [references](#)) were used in the production of this report:

MolProbity : 4.02b-467
Mogul : 1.15 2013
Xtriage (Phenix) : dev-1323
EDS : stable22639
Percentile statistics : 21963
Refmac : 5.8.0049
CCP4 : 6.3.0 (Settle)
Ideal geometry (proteins) : Engh & Huber (2001)
Ideal geometry (DNA, RNA) : Parkinson et. al. (1996)
Validation Pipeline (wwPDB-VP) : stable22683

1 Overall quality at a glance

The reported resolution of this entry is 1.64 Å.

Percentile scores (ranging between 0-100) for global validation metrics of the entry are shown in the following graphic. The table shows the number of entries on which the scores are based.



Metric	Whole archive (#Entries)	Similar resolution (#Entries, resolution range(Å))
Clashscore	79885	1525 (1.66-1.62)
Ramachandran outliers	78287	1490 (1.66-1.62)
Sidechain outliers	78261	1490 (1.66-1.62)
RSRZ outliers	66119	1326 (1.66-1.62)

The table below summarises the geometric issues observed across the polymeric chains and their fit to the electron density. The red, orange, yellow and green segments on the lower bar indicate the fraction of residues that contain outliers for ≥ 3 , 2, 1 and 0 types of geometric quality criteria. The upper red bar (where present) indicates the fraction of residues that have poor fit to the electron density.

Mol	Chain	Length	Quality of chain
1	A	366	
1	B	366	

2 Entry composition i

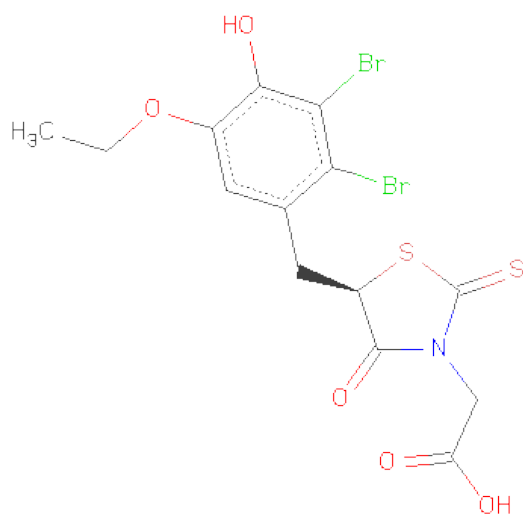
There are 3 unique types of molecules in this entry. The entry contains 6533 atoms, of which 0 are hydrogen and 0 are deuterium.

In the tables below, the ZeroOcc column contains the number of atoms modelled with zero occupancy, the AltConf column contains the number of residues with at least one atom in alternate conformation and the Trace column contains the number of residues modelled with at most 2 atoms.

- Molecule 1 is a protein called DNA polymerase III subunit beta.

Mol	Chain	Residues	Atoms					ZeroOcc	AltConf	Trace
1	A	366	Total	C	N	O	S	0	0	0
			2844	1786	498	541	19			
1	B	366	Total	C	N	O	S	0	0	0
			2844	1786	498	541	19			

- Molecule 2 is [(5R)-5-(2,3-DIBROMO-5-ETHOXY-4-HYDROXYBENZYL)-4-OXO-2-THIOXO-1,3-THIAZOLIDIN-3-YL]ACETICACID (three-letter code: 322) (formula: C₁₄H₁₃Br₂NO₅S₂).



Mol	Chain	Residues	Atoms					ZeroOcc	AltConf
2	A	1	Total	Br	C	N	O	S	0
			24	2	14	1	5	2	
2	B	1	Total	Br	C	N	O	S	0
			24	2	14	1	5	2	

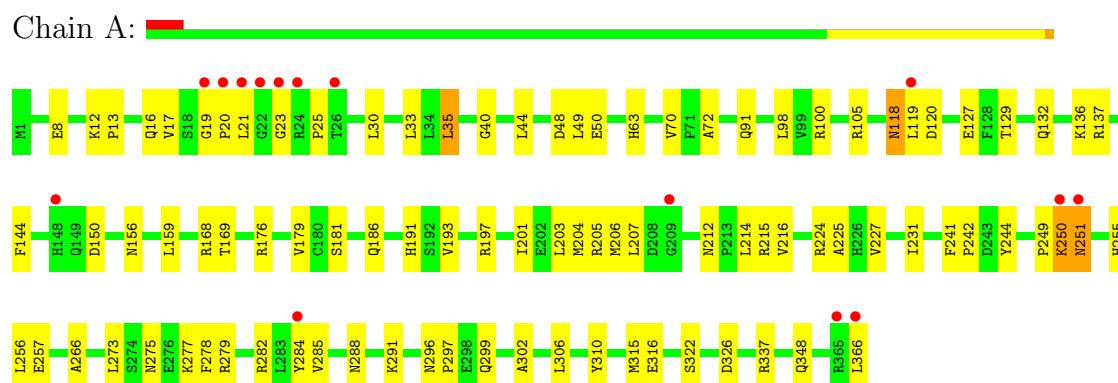
- Molecule 3 is water.

Mol	Chain	Residues	Atoms		ZeroOcc	AltConf
3	A	384	Total 384	O 384	0	0
3	B	413	Total 413	O 413	0	0

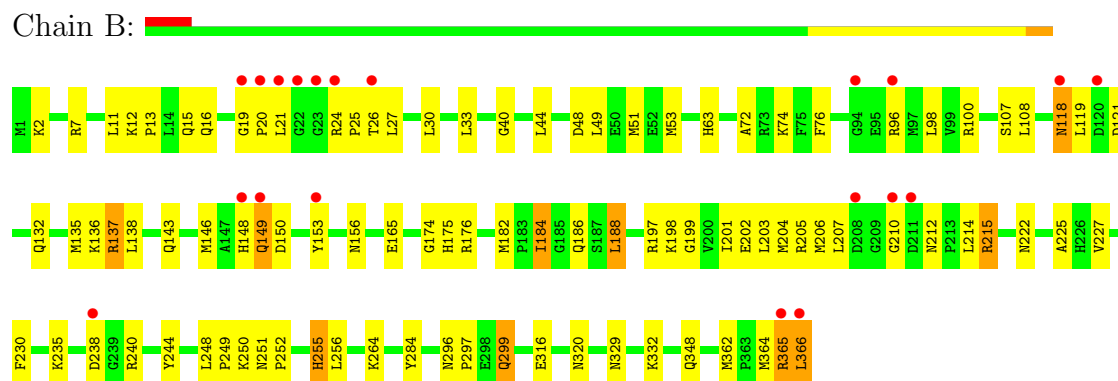
3 Residue-property plots

These plots are drawn for all protein, RNA and DNA chains in the entry. The first graphic for a chain summarises the proportions of errors displayed in the second graphic. The second graphic shows the sequence view annotated by issues in geometry and electron density. Residues are color-coded according to the number of geometric quality criteria for which they contain at least one outlier: green = 0, yellow = 1, orange = 2 and red = 3 or more. A red dot above a residue indicates a poor fit to the electron density ($RSRZ > 2$). Stretches of 2 or more consecutive residues without any outlier are shown as a green connector. Residues present in the sample, but not in the model, are shown in grey.

• Molecule 1: DNA polymerase III subunit beta



• Molecule 1: DNA polymerase III subunit beta



4 Data and refinement statistics

Property	Value	Source
Space group	P 1	Depositor
Cell constants a, b, c, α , β , γ	35.72Å 79.39Å 80.50Å 110.24° 100.58° 99.46°	Depositor
Resolution (Å)	34.21 – 1.64 34.21 – 1.52	Depositor EDS
% Data completeness (in resolution range)	89.7 (34.21-1.64) 85.5 (34.21-1.52)	Depositor EDS
R_{merge}	0.06	Depositor
R_{sym}	(Not available)	Depositor
$\langle I/\sigma(I) \rangle$ ¹	2.67 (at 1.52Å)	Xtriage
Refinement program	CNS	Depositor
R, R_{free}	0.256 , 0.296 0.232 , (Not available)	Depositor DCC
R_{free} test set	No test flags present.	DCC
Wilson B-factor (Å ²)	17.6	Xtriage
Anisotropy	0.369	Xtriage
Bulk solvent k_{sol} (e/Å ³), B_{sol} (Å ²)	0.37 , 43.0	EDS
Estimated twinning fraction	0.008 for -h,-l,-k	Xtriage
L-test for twinning	$\langle L \rangle = 0.49$, $\langle L^2 \rangle = 0.32$	Xtriage
Outliers	0 of 111030 reflections	Xtriage
F_o, F_c correlation	0.94	EDS
Total number of atoms	6533	wwPDB-VP
Average B, all atoms (Å ²)	26.0	wwPDB-VP

Xtriage's analysis on translational NCS is as follows: *The largest off-origin peak in the Patterson function is 6.75% of the height of the origin peak. No significant pseudotranslation is detected.*

¹Intensities estimated from amplitudes.

5 Model quality

5.1 Standard geometry

Bond lengths and bond angles in the following residue types are not validated in this section: 322

The Z score for a bond length (or angle) is the number of standard deviations the observed value is removed from the expected value. A bond length (or angle) with $|Z| > 5$ is considered an outlier worth inspection. RMSZ is the root-mean-square of all Z scores of the bond lengths (or angles).

Mol	Chain	Bond lengths		Bond angles	
		RMSZ	$\# Z > 5$	RMSZ	$\# Z > 5$
1	A	0.29	0/2893	0.60	0/3915
1	B	0.30	0/2893	0.59	0/3915
All	All	0.29	0/5786	0.59	0/7830

There are no bond length outliers.

There are no bond angle outliers.

There are no chirality outliers.

There are no planarity outliers.

5.2 Close contacts

In the following table, the Non-H and H(model) columns list the number of non-hydrogen atoms and hydrogen atoms in the chain respectively. The H(added) column lists the number of hydrogens added by MolProbity. The Clashes column lists the number of clashes within the asymmetric unit, and the number in parentheses is this value normalized per 1000 atoms of the molecule in the chain. The Symm-Clashes column gives symmetry related clashes, in the same way as for the Clashes column.

Mol	Chain	Non-H	H(model)	H(added)	Clashes	Symm-Clashes
1	A	2844	0	2861	94	0
1	B	2844	0	2861	89	0
2	A	24	0	12	1	0
2	B	24	0	12	1	0
3	A	384	0	0	5	0
3	B	413	0	0	9	0
All	All	6533	0	5746	183	0

Clashscore is defined as the number of clashes calculated for the entry per 1000 atoms (including hydrogens) of the entry. The overall clashscore for this entry is 16.

All (183) close contacts within the same asymmetric unit are listed below.

Atom-1	Atom-2	Distance(Å)	Clash(Å)
1:A:35:LEU:HD12	1:A:44:LEU:HD12	1.48	0.93
1:B:249:PRO:HB2	1:B:252:PRO:HG3	1.50	0.92
1:A:193:VAL:HG13	3:A:685:HOH:O	1.78	0.82
1:A:129:THR:H	1:A:186:GLN:HE22	1.28	0.81
1:B:150:ASP:H	1:B:156:ASN:HD21	1.25	0.81
1:B:244:TYR:O	1:B:248:LEU:HD23	1.83	0.78
1:B:143:GLN:HG3	1:B:146:MET:HE1	1.67	0.75
1:B:19:GLY:HA3	1:B:205:ARG:NH2	2.02	0.74
1:A:299:GLN:HA	1:A:299:GLN:HE21	1.53	0.73
1:A:150:ASP:H	1:A:156:ASN:HD21	1.36	0.72
1:A:214:LEU:HD11	1:A:225:ALA:HB1	1.73	0.71
1:A:203:LEU:O	1:A:206:MET:HG2	1.92	0.70
1:A:12:LYS:HB3	1:A:13:PRO:HD3	1.73	0.69
1:A:168:ARG:HD3	1:A:181:SER:OG	1.92	0.69
1:B:204:MET:HE1	1:B:207:LEU:HD12	1.72	0.69
1:B:137:ARG:HG3	1:B:138:LEU:N	2.07	0.69
2:A:501:322:H4	2:A:501:322:S1	2.33	0.68
1:B:165:GLU:O	1:B:184:ILE:HD13	1.94	0.68
1:B:264:LYS:HD2	1:B:329:ASN:ND2	2.08	0.68
1:B:15:GLN:HG2	1:B:76:PHE:CZ	2.29	0.67
1:A:197:ARG:O	1:A:201:ILE:HD13	1.95	0.67
1:A:98:LEU:HD13	1:A:100:ARG:HH12	1.61	0.66
1:B:174:GLY:HA2	2:B:502:322:H7	1.78	0.65
1:A:288:ASN:HD22	1:A:310:TYR:H	1.43	0.65
1:A:35:LEU:HD21	1:A:70:VAL:HG22	1.79	0.64
1:B:214:LEU:HD11	1:B:225:ALA:HB1	1.78	0.64
1:A:98:LEU:CD1	1:A:100:ARG:HH12	2.12	0.63
1:A:19:GLY:HA3	1:A:205:ARG:NH2	2.14	0.63
1:A:279:ARG:HD3	1:A:322:SER:OG	1.98	0.63
1:A:214:LEU:HD13	1:A:227:VAL:HG22	1.81	0.62
1:A:35:LEU:HD12	1:A:44:LEU:CD1	2.26	0.62
1:B:186:GLN:O	1:B:188:LEU:HD22	1.99	0.62
1:A:299:GLN:HB3	1:B:96:ARG:NH2	2.15	0.62
1:B:118:ASN:ND2	3:B:921:HOH:O	2.33	0.61
1:A:136:LYS:HG2	1:A:204:MET:CE	2.30	0.61
1:B:366:LEU:HD12	1:B:366:LEU:OXT	2.00	0.61
1:A:23:GLY:O	1:A:25:PRO:HD3	2.01	0.61
1:B:175:HIS:O	1:B:362:MET:HG2	2.00	0.61
1:A:30:LEU:HD21	1:A:49:LEU:HD21	1.83	0.60
1:A:48:ASP:OD1	1:A:50:GLU:HG2	2.02	0.59
1:A:275:ASN:ND2	1:A:277:LYS:H	2.01	0.59
1:B:284:TYR:CD2	1:B:316:GLU:HG2	2.37	0.59

Continued on next page...

Continued from previous page...

Atom-1	Atom-2	Distance(Å)	Clash(Å)
1:B:252:PRO:O	1:B:255:HIS:HE1	1.85	0.59
1:B:137:ARG:HD3	1:B:182:MET:SD	2.43	0.59
1:A:299:GLN:NE2	1:A:299:GLN:HA	2.17	0.58
1:A:275:ASN:HD22	1:A:277:LYS:H	1.49	0.58
1:B:33:LEU:HG	1:B:72:ALA:CB	2.32	0.58
1:B:332:LYS:HG3	1:B:332:LYS:O	2.03	0.58
1:B:26:THR:HG23	1:B:27:LEU:H	1.68	0.58
1:A:214:LEU:HD13	1:A:227:VAL:CG2	2.33	0.58
1:B:203:LEU:O	1:B:206:MET:HG2	2.03	0.57
1:A:48:ASP:O	1:A:49:LEU:HB2	2.04	0.57
1:B:132:GLN:NE2	1:B:212:ASN:HB3	2.19	0.57
1:A:91:GLN:CD	1:A:100:ARG:HH22	2.08	0.56
1:B:135:MET:HE3	1:B:135:MET:O	2.05	0.56
1:B:264:LYS:HD2	1:B:329:ASN:HD21	1.69	0.56
1:B:15:GLN:HG2	1:B:76:PHE:HZ	1.71	0.56
1:B:7:ARG:O	1:B:11:LEU:HD23	2.05	0.56
1:B:149:GLN:HG3	3:B:900:HOH:O	2.05	0.56
1:A:255:HIS:NE2	1:A:257:GLU:HG3	2.21	0.56
1:A:35:LEU:CD1	1:A:44:LEU:HD12	2.30	0.56
1:B:204:MET:CE	1:B:207:LEU:HD12	2.36	0.56
1:A:20:PRO:HG3	3:A:627:HOH:O	2.07	0.55
1:A:284:TYR:CD2	1:A:316:GLU:HG2	2.41	0.55
1:B:20:PRO:HG2	1:B:21:LEU:HD12	1.88	0.54
1:A:288:ASN:ND2	1:A:310:TYR:H	2.05	0.54
1:B:26:THR:HG23	1:B:27:LEU:N	2.22	0.54
1:B:250:LYS:HE2	3:B:943:HOH:O	2.08	0.53
1:B:202:GLU:OE2	1:B:205:ARG:NH2	2.42	0.53
1:B:214:LEU:HD13	1:B:227:VAL:CG2	2.39	0.53
1:B:12:LYS:HE3	1:B:230:PHE:CE2	2.42	0.53
1:B:33:LEU:HG	1:B:72:ALA:HB2	1.90	0.53
1:B:184:ILE:HD11	1:B:188:LEU:HD21	1.91	0.53
1:A:275:ASN:HD22	1:A:278:PHE:H	1.57	0.53
1:B:143:GLN:HG3	1:B:146:MET:CE	2.36	0.53
1:B:296:ASN:HB2	1:B:297:PRO:HD2	1.91	0.53
1:B:249:PRO:HD2	1:B:348:GLN:HE21	1.75	0.52
1:A:33:LEU:HG	1:A:72:ALA:CB	2.39	0.52
1:B:40:GLY:HA2	1:B:63:HIS:NE2	2.25	0.52
1:A:224:ARG:HH11	1:A:231:ILE:CG2	2.23	0.52
1:A:250:LYS:NZ	1:A:251:ASN:HB2	2.25	0.51
1:A:250:LYS:HG2	1:A:251:ASN:N	2.25	0.51
1:A:282:ARG:HG2	1:A:284:TYR:CE1	2.45	0.51
1:A:203:LEU:O	1:A:207:LEU:HD22	2.10	0.51

Continued on next page...

Continued from previous page...

Atom-1	Atom-2	Distance(Å)	Clash(Å)
1:A:136:LYS:HG2	1:A:204:MET:HE3	1.91	0.51
1:B:12:LYS:HB3	1:B:13:PRO:HD3	1.92	0.51
1:B:48:ASP:O	1:B:49:LEU:HB2	2.11	0.50
1:B:51:MET:HE1	1:B:199:GLY:N	2.26	0.50
1:B:44:LEU:N	1:B:44:LEU:HD12	2.25	0.50
1:A:40:GLY:HA2	1:A:63:HIS:NE2	2.26	0.50
1:A:136:LYS:HG2	1:A:204:MET:HE1	1.92	0.50
1:A:33:LEU:HG	1:A:72:ALA:HB2	1.94	0.50
1:B:215:ARG:N	1:B:215:ARG:HD3	2.26	0.50
1:A:21:LEU:HD12	1:A:21:LEU:N	2.26	0.50
1:B:320:ASN:HB2	1:B:364:MET:CE	2.42	0.50
1:A:105:ARG:HB2	1:A:105:ARG:NH1	2.26	0.50
1:B:96:ARG:HD3	1:B:107:SER:OG	2.12	0.50
1:A:98:LEU:HD13	1:A:100:ARG:NH1	2.25	0.50
1:B:2:LYS:HE3	3:B:864:HOH:O	2.11	0.50
1:B:98:LEU:HD23	1:B:100:ARG:NH2	2.27	0.49
1:A:132:GLN:HG3	1:A:212:ASN:O	2.11	0.49
1:A:127:GLU:OE1	1:A:215:ARG:NH2	2.45	0.49
1:B:143:GLN:HE22	1:B:201:ILE:HD13	1.77	0.49
1:A:19:GLY:HA3	1:A:205:ARG:HH22	1.78	0.49
1:B:214:LEU:HD13	1:B:227:VAL:HG22	1.94	0.48
1:B:156:ASN:O	1:B:197:ARG:HB2	2.14	0.48
1:A:168:ARG:HD2	1:A:179:VAL:CG2	2.44	0.48
1:B:203:LEU:O	1:B:203:LEU:HD23	2.14	0.48
1:A:241:PHE:CG	1:A:242:PRO:HD2	2.49	0.47
1:B:148:HIS:C	1:B:149:GLN:HE21	2.18	0.47
1:B:108:LEU:HD12	1:B:108:LEU:N	2.29	0.47
1:A:203:LEU:O	1:A:207:LEU:CD2	2.63	0.47
1:A:191:HIS:HE1	3:A:568:HOH:O	1.97	0.47
1:B:203:LEU:HD23	1:B:203:LEU:C	2.35	0.47
1:A:249:PRO:HD2	1:A:348:GLN:HE21	1.79	0.47
1:A:127:GLU:CD	1:A:215:ARG:HH21	2.19	0.47
1:A:284:TYR:HB2	1:A:291:LYS:HB3	1.96	0.47
1:A:275:ASN:ND2	1:A:278:PHE:H	2.13	0.46
1:B:21:LEU:HD12	1:B:21:LEU:N	2.30	0.46
1:A:48:ASP:CG	1:A:50:GLU:HG2	2.35	0.46
1:B:135:MET:HG2	1:B:203:LEU:HD21	1.96	0.46
1:B:296:ASN:HB2	1:B:297:PRO:CD	2.45	0.46
1:B:148:HIS:C	1:B:149:GLN:NE2	2.69	0.46
1:B:51:MET:HE1	1:B:198:LYS:HB3	1.97	0.46
1:A:44:LEU:HD22	1:A:44:LEU:N	2.31	0.46
1:A:296:ASN:HB2	1:A:297:PRO:CD	2.45	0.46

Continued on next page...

Continued from previous page...

Atom-1	Atom-2	Distance(Å)	Clash(Å)
1:A:144:PHE:CD2	1:A:326:ASP:HB3	2.51	0.46
1:A:13:PRO:O	1:A:17:VAL:HG22	2.15	0.45
1:B:11:LEU:O	1:B:15:GLN:HG3	2.16	0.45
1:B:210:GLY:C	1:B:212:ASN:H	2.18	0.45
1:B:119:LEU:HG	3:B:927:HOH:O	2.16	0.45
1:A:17:VAL:O	1:A:20:PRO:HD2	2.17	0.45
1:B:19:GLY:N	1:B:20:PRO:HD2	2.30	0.45
1:B:16:GLN:HA	1:B:205:ARG:HH12	1.80	0.45
1:B:118:ASN:HD22	1:B:118:ASN:C	2.20	0.44
1:A:273:LEU:HD12	1:A:302:ALA:HB2	2.00	0.44
1:A:275:ASN:HD22	1:A:277:LYS:N	2.15	0.44
1:B:332:LYS:HD2	3:B:907:HOH:O	2.17	0.44
1:B:153:TYR:HE2	1:B:238:ASP:O	1.99	0.44
1:A:118:ASN:ND2	3:A:511:HOH:O	2.50	0.44
1:A:366:LEU:HD13	1:A:366:LEU:C	2.37	0.44
1:B:204:MET:HE3	1:B:204:MET:HA	2.00	0.44
1:B:256:LEU:C	1:B:256:LEU:HD23	2.38	0.44
1:A:129:THR:N	1:A:186:GLN:HE22	2.07	0.43
1:A:299:GLN:CA	1:A:299:GLN:HE21	2.20	0.43
1:A:16:GLN:O	1:A:205:ARG:NH2	2.52	0.43
1:A:256:LEU:C	1:A:256:LEU:HD23	2.39	0.43
1:B:222:ASN:ND2	1:B:235:LYS:HD3	2.33	0.43
1:A:250:LYS:HZ2	1:A:251:ASN:HB2	1.84	0.43
1:B:136:LYS:HD2	3:B:859:HOH:O	2.19	0.43
1:A:215:ARG:HD2	1:A:216:VAL:N	2.34	0.42
1:B:146:MET:HE3	1:B:197:ARG:NH1	2.33	0.42
1:B:299:GLN:HB2	1:B:299:GLN:HE21	1.60	0.42
1:B:25:PRO:CG	1:B:30:LEU:HB2	2.50	0.42
1:A:30:LEU:CD2	1:A:49:LEU:HD21	2.49	0.42
1:B:320:ASN:HB2	1:B:364:MET:HE3	2.00	0.42
1:A:215:ARG:HH11	1:A:215:ARG:HG2	1.84	0.42
1:B:365:ARG:HH11	1:B:365:ARG:HG3	1.85	0.42
1:A:8:GLU:CD	1:A:8:GLU:H	2.23	0.42
1:A:35:LEU:HD22	1:A:35:LEU:N	2.35	0.42
1:A:159:LEU:O	1:A:169:THR:HA	2.20	0.42
1:A:296:ASN:HB2	1:A:297:PRO:HD2	2.02	0.41
1:A:129:THR:HG23	3:A:787:HOH:O	2.19	0.41
1:A:255:HIS:CD2	1:A:337:ARG:HG3	2.56	0.41
1:B:252:PRO:O	1:B:255:HIS:CE1	2.71	0.41
1:A:105:ARG:NH1	1:A:105:ARG:CB	2.83	0.41
1:A:105:ARG:HB2	1:A:105:ARG:CZ	2.51	0.41
1:A:119:LEU:HD23	1:A:120:ASP:O	2.20	0.41

Continued on next page...

Continued from previous page...

Atom-1	Atom-2	Distance(Å)	Clash(Å)
1:A:168:ARG:NE	1:A:244:TYR:OH	2.53	0.41
1:A:224:ARG:HH11	1:A:231:ILE:HG21	1.84	0.41
1:A:285:VAL:CG2	1:A:315:MET:HG2	2.51	0.41
1:A:129:THR:HG22	1:A:215:ARG:HD3	2.03	0.41
1:B:118:ASN:HD22	1:B:119:LEU:N	2.19	0.41
1:B:240:ARG:O	1:B:240:ARG:HG3	2.20	0.41
1:B:251:ASN:N	1:B:252:PRO:HD3	2.36	0.41
1:A:136:LYS:HE3	1:A:207:LEU:HB3	2.02	0.41
1:B:332:LYS:CG	1:B:332:LYS:O	2.69	0.41
1:B:249:PRO:CB	1:B:252:PRO:HG3	2.35	0.40
1:B:74:LYS:HE2	3:B:1031:HOH:O	2.20	0.40
1:A:266:ALA:CB	1:A:306:LEU:HD11	2.51	0.40
1:A:207:LEU:HD22	1:A:207:LEU:N	2.36	0.40
1:B:205:ARG:HB3	3:B:798:HOH:O	2.21	0.40
1:A:251:ASN:HA	1:A:251:ASN:HD22	1.55	0.40

There are no symmetry-related clashes.

5.3 Torsion angles

5.3.1 Protein backbone ⓘ

In the following table, the Percentiles column shows the percent Ramachandran outliers of the chain as a percentile score with respect to all X-ray entries followed by that with respect to entries of similar resolution. The Analysed column shows the number of residues for which the backbone conformation was analysed, and the total number of residues.

Mol	Chain	Analysed	Favoured	Allowed	Outliers	Percentiles	
1	A	364/366 (100%)	353 (97%)	10 (3%)	1 (0%)	50	24
1	B	364/366 (100%)	354 (97%)	9 (2%)	1 (0%)	50	24
All	All	728/732 (100%)	707 (97%)	19 (3%)	2 (0%)	50	24

All (2) Ramachandran outliers are listed below:

Mol	Chain	Res	Type
1	A	250	LYS
1	B	24	ARG

5.3.2 Protein sidechains ⓘ

In the following table, the Percentiles column shows the percent sidechain outliers of the chain as a percentile score with respect to all X-ray entries followed by that with respect to entries of similar resolution. The Analysed column shows the number of residues for which the sidechain conformation was analysed, and the total number of residues.

Mol	Chain	Analysed	Rotameric	Outliers	Percentiles	
1	A	313/313 (100%)	308 (98%)	5 (2%)	75	51
1	B	313/313 (100%)	300 (96%)	13 (4%)	40	11
All	All	626/626 (100%)	608 (97%)	18 (3%)	55	21

All (18) residues with a non-rotameric sidechain are listed below:

Mol	Chain	Res	Type
1	A	35	LEU
1	A	118	ASN
1	A	137	ARG
1	A	176	ARG
1	A	251	ASN
1	B	53	MET
1	B	118	ASN
1	B	121	ASP
1	B	137	ARG
1	B	149	GLN
1	B	176	ARG
1	B	184	ILE
1	B	188	LEU
1	B	215	ARG
1	B	255	HIS
1	B	299	GLN
1	B	365	ARG
1	B	366	LEU

Some sidechains can be flipped to improve hydrogen bonding and reduce clashes. All (27) such sidechains are listed below:

Mol	Chain	Res	Type
1	A	15	GLN
1	A	16	GLN
1	A	118	ASN
1	A	123	GLN
1	A	143	GLN
1	A	149	GLN

Continued on next page...

Continued from previous page...

Mol	Chain	Res	Type
1	A	156	ASN
1	A	186	GLN
1	A	191	HIS
1	A	251	ASN
1	A	275	ASN
1	A	288	ASN
1	A	299	GLN
1	A	329	ASN
1	A	348	GLN
1	B	16	GLN
1	B	118	ASN
1	B	143	GLN
1	B	148	HIS
1	B	149	GLN
1	B	156	ASN
1	B	217	GLN
1	B	255	HIS
1	B	299	GLN
1	B	329	ASN
1	B	348	GLN
1	B	355	GLN

5.3.3 RNA ⓘ

There are no RNA chains in this entry.

5.4 Non-standard residues in protein, DNA, RNA chains ⓘ

There are no non-standard protein/DNA/RNA residues in this entry.

5.5 Carbohydrates ⓘ

There are no carbohydrates in this entry.

5.6 Ligand geometry ⓘ

2 ligands are modelled in this entry.

In the following table, the Counts columns list the number of bonds (or angles) for which Mogul statistics could be retrieved, the number of bonds (or angles) that are observed in the model and the number of bonds (or angles) that are defined in the chemical component dictionary. The Link

column lists molecule types, if any, to which the group is linked. The Z score for a bond length (or angle) is the number of standard deviations the observed value is removed from the expected value. A bond length (or angle) with $|Z| > 2$ is considered an outlier worth inspection. RMSZ is the root-mean-square of all Z scores of the bond lengths (or angles).

Mol	Type	Chain	Res	Link	Bond lengths			Bond angles		
					Counts	RMSZ	# Z > 2	Counts	RMSZ	# Z > 2
2	322	A	501	-	25,25,25	1.49	6 (24%)	36,36,36	1.44	5 (13%)
2	322	B	502	-	25,25,25	1.81	6 (24%)	36,36,36	1.18	3 (8%)

In the following table, the Chirals column lists the number of chiral outliers, the number of chiral centers analysed, the number of these observed in the model and the number defined in the chemical component dictionary. Similar counts are reported in the Torsion and Rings columns. '-' means no outliers of that kind were identified.

Mol	Type	Chain	Res	Link	Chirals	Torsions	Rings
2	322	A	501	-	-	0/11/27/27	0/2/2/2
2	322	B	502	-	-	0/11/27/27	0/2/2/2

All (12) bond length outliers are listed below:

Mol	Chain	Res	Type	Atoms	Z	Observed(Å)	Ideal(Å)
2	B	502	322	C5-C12	4.95	1.45	1.39
2	A	501	322	C7-C11	-2.83	1.50	1.52
2	A	501	322	C5-C12	2.83	1.43	1.39
2	B	502	322	O1-C3	2.72	1.43	1.37
2	A	501	322	C4-C3	2.65	1.43	1.38
2	A	501	322	C4-C5	2.59	1.44	1.39
2	B	502	322	C9-N1	2.39	1.49	1.45
2	B	502	322	C4-C3	2.38	1.43	1.38
2	A	501	322	C9-N1	2.29	1.48	1.45
2	B	502	322	BR2-C13	2.29	1.94	1.89
2	A	501	322	O1-C3	2.28	1.42	1.37
2	B	502	322	C12-C13	2.22	1.45	1.39

All (8) bond angle outliers are listed below:

Mol	Chain	Res	Type	Atoms	Z	Observed(°)	Ideal(°)
2	A	501	322	C5-C6-C7	4.90	121.57	113.23
2	A	501	322	C6-C7-S1	4.39	117.58	113.00
2	B	502	322	C5-C6-C7	2.82	118.04	113.23
2	B	502	322	C3-C14-C13	2.38	121.37	118.05
2	B	502	322	O4-C11-C7	-2.36	121.36	126.07
2	A	501	322	O4-C11-C7	-2.30	121.49	126.07

Continued on next page...

Continued from previous page...

Mol	Chain	Res	Type	Atoms	Z	Observed(°)	Ideal(°)
2	A	501	322	C3-C14-C13	2.20	121.12	118.05
2	A	501	322	C4-C3-C14	-2.20	118.29	120.61

There are no chirality outliers.

There are no torsion outliers.

There are no ring outliers.

5.7 Other polymers ⓘ

There are no such residues in this entry.

5.8 Polymer linkage issues

There are no chain breaks in this entry.

6 Fit of model and data ⓘ

6.1 Protein, DNA and RNA chains ⓘ

In the following table, the column labelled ‘#RSRZ> 2’ contains the number (and percentage) of RSRZ outliers, followed by percent RSRZ outliers for the chain as percentile scores relative to all X-ray entries and entries of similar resolution. The OWAB column contains the minimum, median, 95th percentile and maximum values of the occupancy-weighted average B-factor per residue. The column labelled ‘Q< 0.9’ lists the number of (and percentage) of residues with an average occupancy less than 0.9.

Mol	Chain	Analysed	<RSRZ>	#RSRZ>2		OWAB(Å ²)	Q<0.9
1	A	366/366 (100%)	0.30	15 (4%)	35 35	12, 23, 40, 68	0
1	B	366/366 (100%)	0.31	20 (5%)	24 22	13, 23, 42, 67	0
All	All	732/732 (100%)	0.31	35 (4%)	29 28	12, 23, 42, 68	0

All (35) RSRZ outliers are listed below:

Mol	Chain	Res	Type	RSRZ
1	B	21	LEU	9.9
1	B	366	LEU	9.7
1	A	366	LEU	8.7
1	B	22	GLY	8.5
1	B	20	PRO	7.2
1	A	21	LEU	6.7
1	B	23	GLY	6.3
1	A	20	PRO	6.1
1	A	22	GLY	5.4
1	B	26	THR	5.0
1	B	24	ARG	4.6
1	A	24	ARG	4.5
1	A	26	THR	4.0
1	A	365	ARG	3.9
1	A	119	LEU	3.5
1	B	118	ASN	3.4
1	B	19	GLY	3.4
1	B	211	ASP	3.4
1	B	238	ASP	3.1
1	A	250	LYS	3.0
1	A	23	GLY	2.8
1	B	96	ARG	2.8
1	A	209	GLY	2.7
1	B	148	HIS	2.5

Continued on next page...

Continued from previous page...

Mol	Chain	Res	Type	RSRZ
1	B	153	TYR	2.5
1	A	148	HIS	2.5
1	B	94	GLY	2.4
1	B	149	GLN	2.3
1	B	120	ASP	2.3
1	A	251	ASN	2.3
1	B	208	ASP	2.3
1	A	284	TYR	2.2
1	A	19	GLY	2.0
1	B	210	GLY	2.0
1	B	365	ARG	2.0

6.2 Non-standard residues in protein, DNA, RNA chains ⓘ

There are no non-standard protein/DNA/RNA residues in this entry.

6.3 Carbohydrates ⓘ

There are no carbohydrates in this entry.

6.4 Ligands ⓘ

In the following table, the Atoms column lists the number of modelled atoms in the group and the number defined in the chemical component dictionary. LLDF column lists the quality of electron density of the group with respect to its neighbouring residues in protein, DNA or RNA chains. The B-factors column lists the minimum, median, 95th percentile and maximum values of B factors of atoms in the group. The column labelled 'Q< 0.9' lists the number of atoms with occupancy less than 0.9.

Mol	Type	Chain	Res	Atoms	RSR	LLDF	B-factors(Å ²)	Q<0.9
2	322	B	502	24/24	0.20	1.40	46,59,66,67	0
2	322	A	501	24/24	0.07	-0.77	16,19,22,29	0

6.5 Other polymers ⓘ

There are no such residues in this entry.