



# Full wwPDB X-ray Structure Validation Report

Feb 27, 2014 – 02:31 PM GMT

PDB ID : 2D2D  
Title : Crystal Structure Of SARS-CoV Mpro in Complex with an Inhibitor I2  
Authors : Yang, H.; Bartlam, M.; Xue, X.; Yang, K.; Liang, W.; Ding, Y.; Rao, Z.  
Deposited on : 2005-09-08  
Resolution : 2.70 Å(reported)

This is a full wwPDB validation report for a publicly released PDB entry.  
We welcome your comments at [validation@mail.wwpdb.org](mailto:validation@mail.wwpdb.org)  
A user guide is available at <http://wwpdb.org/ValidationPDFNotes.html>

---

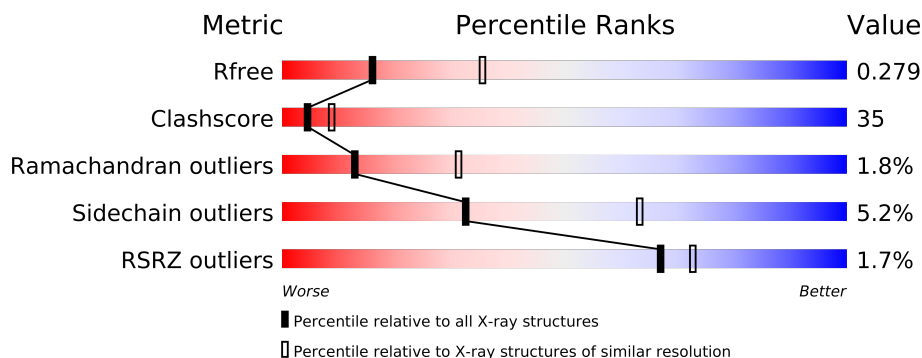
The following versions of software and data (see [references](#)) were used in the production of this report:

MolProbity : 4.02b-467  
Mogul : 1.15 2013  
Xtriage (Phenix) : dev-1323  
EDS : stable22639  
Percentile statistics : 21963  
Refmac : 5.8.0049  
CCP4 : 6.3.0 (Settle)  
Ideal geometry (proteins) : Engh & Huber (2001)  
Ideal geometry (DNA, RNA) : Parkinson et. al. (1996)  
Validation Pipeline (wwPDB-VP) : stable22683

# 1 Overall quality at a glance

The reported resolution of this entry is 2.70 Å.

Percentile scores (ranging between 0-100) for global validation metrics of the entry are shown in the following graphic. The table shows the number of entries on which the scores are based.



Metric	Whole archive (#Entries)	Similar resolution (#Entries, resolution range(Å))
$R_{free}$	66092	1557 (2.70-2.70)
Clashscore	79885	1939 (2.70-2.70)
Ramachandran outliers	78287	1905 (2.70-2.70)
Sidechain outliers	78261	1905 (2.70-2.70)
RSRZ outliers	66119	1559 (2.70-2.70)

The table below summarises the geometric issues observed across the polymeric chains and their fit to the electron density. The red, orange, yellow and green segments on the lower bar indicate the fraction of residues that contain outliers for  $\geq 3$ , 2, 1 and 0 types of geometric quality criteria. The upper red bar (where present) indicates the fraction of residues that have poor fit to the electron density.

Mol	Chain	Length	Quality of chain
1	A	311	
1	B	311	

The following table lists non-polymeric compounds that are outliers for geometric or electron-density-fit criteria:

Mol	Type	Chain	Res	Geometry	Electron density
2	ENB	A	307	-	X
2	ENB	B	1145	-	X

## 2 Entry composition

There are 3 unique types of molecules in this entry. The entry contains 4885 atoms, of which 0 are hydrogen and 0 are deuterium.

In the tables below, the ZeroOcc column contains the number of atoms modelled with zero occupancy, the AltConf column contains the number of residues with at least one atom in alternate conformation and the Trace column contains the number of residues modelled with at most 2 atoms.

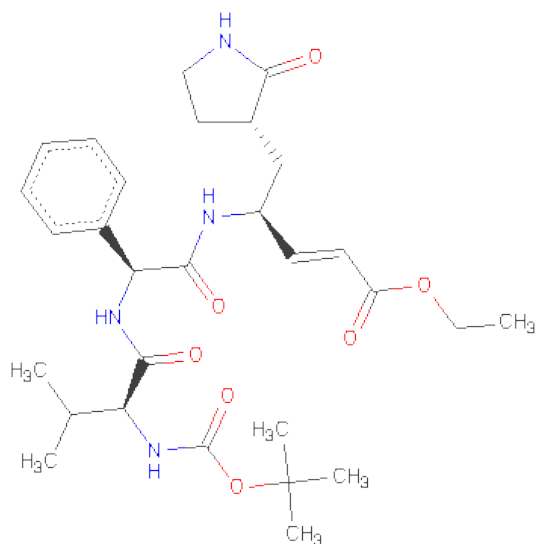
- Molecule 1 is a protein called 3C-like proteinase.

Mol	Chain	Residues	Atoms					ZeroOcc	AltConf	Trace
1	A	301	Total	C	N	O	S	0	0	0
			2333	1476	399	436	22			
1	B	302	Total	C	N	O	S	0	0	0
			2336	1476	400	438	22			

There are 10 discrepancies between the modelled and reference sequences:

Chain	Residue	Modelled	Actual	Comment	Reference
A	-4	GLY	-	CLONING ARTIFACT	UNP P59641
A	-3	PRO	-	CLONING ARTIFACT	UNP P59641
A	-2	LEU	-	CLONING ARTIFACT	UNP P59641
A	-1	GLY	-	CLONING ARTIFACT	UNP P59641
A	0	SER	-	CLONING ARTIFACT	UNP P59641
B	-4	GLY	-	CLONING ARTIFACT	UNP P59641
B	-3	PRO	-	CLONING ARTIFACT	UNP P59641
B	-2	LEU	-	CLONING ARTIFACT	UNP P59641
B	-1	GLY	-	CLONING ARTIFACT	UNP P59641
B	0	SER	-	CLONING ARTIFACT	UNP P59641

- Molecule 2 is ETHYL (2E,4S)-4-(((2R)-2-{[N-(TERT-BUTOXYCARBONYL)-L-VALYL]AMINO}-2-PHENYLETHANOYL)AMINO)-5-[(3S)-2-OXOPYRROLIDIN-3-YL]PENT-2-ENOATE (three-letter code: ENB) (formula: C<sub>29</sub>H<sub>42</sub>N<sub>4</sub>O<sub>7</sub>).



Mol	Chain	Residues	Atoms				ZeroOcc	AltConf
			Total	C	N	O		
2	A	1	40	29	4	7	0	0
2	B	1	40	29	4	7	0	0

- Molecule 3 is water.

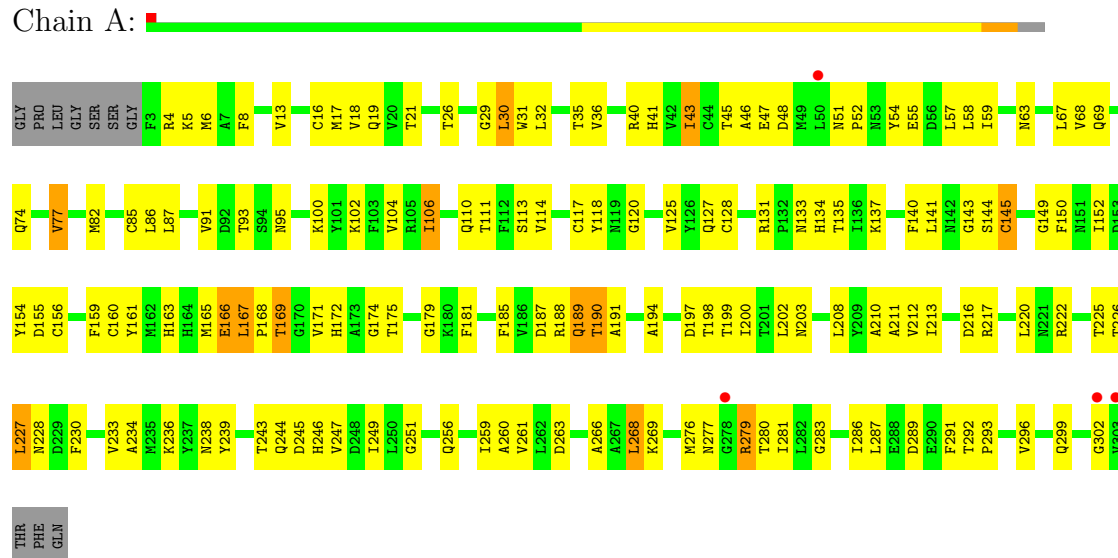
Mol	Chain	Residues	Atoms		ZeroOcc	AltConf
			Total	O		
3	A	73	73	73	0	0
3	B	63	63	63	0	0

### 3 Residue-property plots

These plots are drawn for all protein, RNA and DNA chains in the entry. The first graphic for a chain summarises the proportions of errors displayed in the second graphic. The second graphic shows the sequence view annotated by issues in geometry and electron density. Residues are color-coded according to the number of geometric quality criteria for which they contain at least one outlier: green = 0, yellow = 1, orange = 2 and red = 3 or more. A red dot above a residue indicates a poor fit to the electron density ( $RSRZ > 2$ ). Stretches of 2 or more consecutive residues without any outlier are shown as a green connector. Residues present in the sample, but not in the model, are shown in grey.

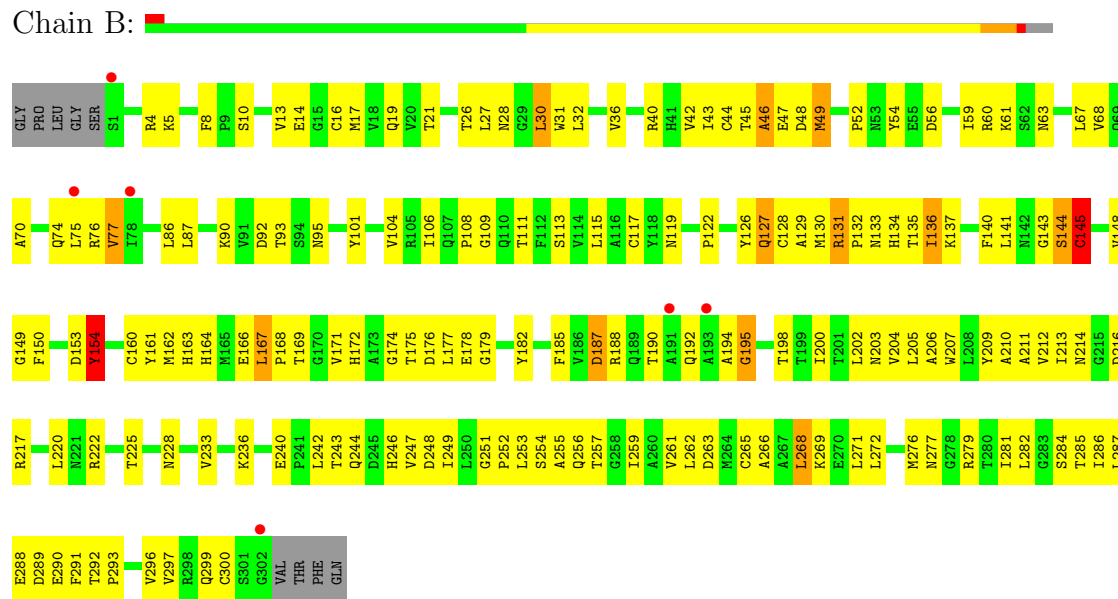
#### • Molecule 1: 3C-like proteinase

Chain A:



#### • Molecule 1: 3C-like proteinase

Chain B:



## 4 Data and refinement statistics

Property	Value	Source
Space group	P 1 21 1	Depositor
Cell constants a, b, c, $\alpha$ , $\beta$ , $\gamma$	50.70Å 94.74Å 66.20Å 90.00° 103.04° 90.00°	Depositor
Resolution (Å)	30.00 – 2.70 47.37 – 2.70	Depositor EDS
% Data completeness (in resolution range)	(Not available) (30.00-2.70) 94.8 (47.37-2.70)	Depositor EDS
$R_{merge}$	(Not available)	Depositor
$R_{sym}$	(Not available)	Depositor
$\langle I/\sigma(I) \rangle$ <sup>1</sup>	3.10 (at 2.69Å)	Xtriage
Refinement program	CNS 1.0	Depositor
R, $R_{free}$	0.209 , 0.282 0.206 , 0.279	Depositor DCC
$R_{free}$ test set	785 reflections (4.92%)	DCC
Wilson B-factor (Å <sup>2</sup> )	29.9	Xtriage
Anisotropy	0.705	Xtriage
Bulk solvent $k_{sol}$ (e/Å <sup>3</sup> ), $B_{sol}$ (Å <sup>2</sup> )	0.34 , 19.2	EDS
Estimated twinning fraction	No twinning to report.	Xtriage
L-test for twinning	$\langle  L  \rangle = 0.49$ , $\langle L^2 \rangle = 0.32$	Xtriage
Outliers	0 of 16785 reflections	Xtriage
$F_o, F_c$ correlation	0.92	EDS
Total number of atoms	4885	wwPDB-VP
Average B, all atoms (Å <sup>2</sup> )	34.0	wwPDB-VP

Xtriage's analysis on translational NCS is as follows: *The largest off-origin peak in the Patterson function is 4.95% of the height of the origin peak. No significant pseudotranslation is detected.*

<sup>1</sup>Intensities estimated from amplitudes.

## 5 Model quality

### 5.1 Standard geometry

Bond lengths and bond angles in the following residue types are not validated in this section: ENB

The Z score for a bond length (or angle) is the number of standard deviations the observed value is removed from the expected value. A bond length (or angle) with  $|Z| > 5$  is considered an outlier worth inspection. RMSZ is the root-mean-square of all Z scores of the bond lengths (or angles).

Mol	Chain	Bond lengths		Bond angles	
		RMSZ	$\# Z  > 5$	RMSZ	$\# Z  > 5$
1	A	0.65	3/2385 (0.1%)	0.73	4/3241 (0.1%)
1	B	0.51	1/2388 (0.0%)	0.74	6/3244 (0.2%)
All	All	0.58	4/4773 (0.1%)	0.74	10/6485 (0.2%)

Chiral center outliers are detected by calculating the chiral volume of a chiral center and verifying if the center is modelled as a planar moiety or with the opposite hand. A planarity outlier is detected by checking planarity of atoms in a peptide group, atoms in a mainchain group or atoms of a sidechain that are expected to be planar.

Mol	Chain	#Chirality outliers	#Planarity outliers
1	B	0	1

All (4) bond length outliers are listed below:

Mol	Chain	Res	Type	Atoms	Z	Observed(Å)	Ideal(Å)
1	A	145	CYS	C-N	18.23	1.65	1.33
1	A	145	CYS	N-CA	-13.31	1.19	1.46
1	B	145	CYS	C-O	10.96	1.44	1.23
1	A	145	CYS	C-O	-6.76	1.10	1.23

All (10) bond angle outliers are listed below:

Mol	Chain	Res	Type	Atoms	Z	Observed(°)	Ideal(°)
1	A	145	CYS	O-C-N	-8.96	107.97	123.20
1	A	145	CYS	N-CA-CB	8.15	125.28	110.60
1	B	144	SER	C-N-CA	-7.91	101.94	121.70
1	B	145	CYS	CB-CA-C	-7.38	95.64	110.40
1	A	145	CYS	CB-CA-C	-7.06	96.28	110.40
1	A	145	CYS	CA-C-O	6.78	134.34	120.10
1	B	144	SER	CA-C-N	-5.92	104.17	117.20

*Continued on next page...*

*Continued from previous page...*

Mol	Chain	Res	Type	Atoms	Z	Observed(°)	Ideal(°)
1	B	144	SER	O-C-N	5.82	132.00	122.70
1	B	145	CYS	O-C-N	-5.66	113.58	123.20
1	B	182	TYR	N-CA-C	-5.18	97.03	111.00

There are no chirality outliers.

All (1) planarity outliers are listed below:

Mol	Chain	Res	Type	Group
1	B	145	CYS	Mainchain

## 5.2 Close contacts ⓘ

In the following table, the Non-H and H(model) columns list the number of non-hydrogen atoms and hydrogen atoms in the chain respectively. The H(added) column lists the number of hydrogens added by MolProbity. The Clashes column lists the number of clashes within the asymmetric unit, and the number in parentheses is this value normalized per 1000 atoms of the molecule in the chain. The Symm-Clashes column gives symmetry related clashes, in the same way as for the Clashes column.

Mol	Chain	Non-H	H(model)	H(added)	Clashes	Symm-Clashes
1	A	2333	0	2286	146	0
1	B	2336	0	2288	187	0
2	A	40	0	39	10	0
2	B	40	0	40	22	0
3	A	73	0	0	5	0
3	B	63	0	0	6	0
All	All	4885	0	4653	332	0

Clashscore is defined as the number of clashes calculated for the entry per 1000 atoms (including hydrogens) of the entry. The overall clashscore for this entry is 35.

All (332) close contacts within the same asymmetric unit are listed below.

Atom-1	Atom-2	Distance(Å)	Clash(Å)
1:B:49:MET:HA	1:B:49:MET:HE2	1.43	0.99
1:B:49:MET:HA	1:B:49:MET:CE	1.94	0.97
1:B:243:THR:H	1:B:246:HIS:CD2	1.86	0.93
1:B:217:ARG:HG2	1:B:220:LEU:HD12	1.50	0.93
1:B:40:ARG:HA	1:B:87:LEU:HG	1.53	0.91
1:B:52:PRO:HD2	1:B:188:ARG:HG2	1.56	0.86
1:A:131:ARG:HD2	1:A:197:ASP:OD1	1.78	0.84
1:A:167:LEU:HD23	1:A:194:ALA:HB2	1.59	0.84

*Continued on next page...*



*Continued from previous page...*

Atom-1	Atom-2	Distance(Å)	Clash(Å)
1:B:49:MET:SD	2:B:1145:ENB:H8	2.22	0.80
1:A:299:GLN:O	1:B:141:LEU:HD11	1.83	0.79
1:A:40:ARG:HA	1:A:87:LEU:HG	1.63	0.79
1:A:163:HIS:HE1	1:A:172:HIS:HB3	1.48	0.78
1:A:55:GLU:O	1:A:59:ILE:HG12	1.85	0.77
1:A:276:MET:O	1:A:279:ARG:HB2	1.84	0.77
1:A:145:CYS:HB2	2:A:307:ENB:O7	1.86	0.76
1:A:163:HIS:CE1	1:A:172:HIS:HB3	2.21	0.75
1:A:110:GLN:HA	1:A:292:THR:HG21	1.70	0.74
1:A:276:MET:HE1	1:A:280:THR:HA	1.70	0.73
1:A:166:GLU:HB2	2:A:307:ENB:C19	2.20	0.71
1:B:243:THR:H	1:B:246:HIS:HD2	1.39	0.71
1:B:166:GLU:HB2	2:B:1145:ENB:C19	2.20	0.71
1:A:5:LYS:HG2	1:A:291:PHE:CZ	2.26	0.70
1:A:222:ARG:HH11	1:A:222:ARG:HG2	1.54	0.70
1:B:192:GLN:H	2:B:1145:ENB:H241	1.57	0.69
1:B:140:PHE:HB2	1:B:172:HIS:CD2	2.27	0.69
1:B:190:THR:C	2:B:1145:ENB:H232	2.13	0.68
1:A:234:ALA:HB1	1:A:239:TYR:HB2	1.75	0.68
1:B:76:ARG:HB3	1:B:92:ASP:OD2	1.94	0.68
1:A:203:ASN:OD1	1:A:292:THR:HA	1.93	0.68
1:B:30:LEU:O	1:B:36:VAL:HA	1.94	0.67
1:A:175:THR:HG22	1:A:181:PHE:HA	1.75	0.67
1:B:111:THR:HG23	1:B:292:THR:HG23	1.77	0.66
1:A:166:GLU:HB2	2:A:307:ENB:O5	1.96	0.66
1:A:40:ARG:O	1:A:43:ILE:HG12	1.96	0.66
1:B:17:MET:HG3	1:B:117:CYS:SG	2.36	0.66
1:B:70:ALA:HB2	1:B:75:LEU:HD11	1.78	0.66
1:A:210:ALA:HB2	1:A:296:VAL:HG13	1.77	0.66
1:B:217:ARG:HG2	1:B:220:LEU:CD1	2.25	0.65
1:A:86:LEU:HG	1:A:179:GLY:HA2	1.79	0.65
1:B:222:ARG:HG2	1:B:222:ARG:HH11	1.62	0.64
1:B:106:ILE:HD11	1:B:130:MET:HE2	1.78	0.64
1:A:67:LEU:HD13	1:A:74:GLN:NE2	2.12	0.64
1:B:293:PRO:O	1:B:297:VAL:HG23	1.98	0.64
1:B:131:ARG:HH22	1:B:289:ASP:CG	2.00	0.63
1:B:131:ARG:HB2	1:B:135:THR:O	1.98	0.63
1:B:164:HIS:NE2	1:B:175:THR:HG22	2.13	0.63
1:B:200:ILE:HG22	1:B:203:ASN:H	1.63	0.63
1:B:54:TYR:OH	1:B:187:ASP:HB3	1.99	0.63
1:B:10:SER:O	1:B:14:GLU:HG3	1.98	0.63
1:A:245:ASP:O	1:A:249:ILE:HG13	1.98	0.63

*Continued on next page...*

*Continued from previous page...*

Atom-1	Atom-2	Distance(Å)	Clash(Å)
1:A:45:THR:HG23	1:A:47:GLU:CG	2.29	0.62
1:B:76:ARG:HH11	1:B:76:ARG:HG2	1.64	0.62
1:A:55:GLU:HA	1:A:82:MET:HE1	1.80	0.62
1:B:56:ASP:OD1	1:B:60:ARG:NH1	2.26	0.62
1:A:243:THR:H	1:A:246:HIS:HD2	1.45	0.62
1:A:169:THR:HB	1:A:171:VAL:HG22	1.82	0.61
1:B:45:THR:OG1	1:B:48:ASP:HB2	2.01	0.61
1:B:192:GLN:H	2:B:1145:ENB:C24	2.13	0.61
1:B:19:GLN:NE2	1:B:119:ASN:HB3	2.15	0.61
1:A:168:PRO:HD3	2:A:307:ENB:H253	1.83	0.61
1:B:48:ASP:O	1:B:52:PRO:HB3	2.01	0.61
1:A:43:ILE:HD13	1:A:58:LEU:HD13	1.81	0.61
1:B:26:THR:O	2:B:1145:ENB:H281	2.00	0.61
1:B:136:ILE:HG23	1:B:172:HIS:HB2	1.83	0.60
1:B:17:MET:CE	1:B:28:ASN:HB3	2.31	0.60
1:A:234:ALA:HB1	1:A:239:TYR:CB	2.31	0.60
1:B:205:LEU:HD21	1:B:268:LEU:HD12	1.82	0.60
1:A:233:VAL:HG21	1:A:269:LYS:HG3	1.84	0.59
1:B:31:TRP:CE2	1:B:95:ASN:HB2	2.37	0.59
1:B:8:PHE:HD2	1:B:113:SER:HG	1.50	0.59
1:B:74:GLN:HB3	3:B:1179:HOH:O	2.01	0.59
1:A:17:MET:HG3	1:A:117:CYS:SG	2.43	0.58
1:B:198:THR:OG1	1:B:240:GLU:HG2	2.03	0.58
1:B:168:PRO:HD3	2:B:1145:ENB:H253	1.85	0.58
1:B:19:GLN:HE21	1:B:119:ASN:HA	1.68	0.58
1:A:30:LEU:HD22	1:A:32:LEU:HG	1.85	0.58
1:B:127:GLN:HA	1:B:127:GLN:HE21	1.69	0.58
1:A:19:GLN:HB2	1:A:120:GLY:HA3	1.86	0.58
1:B:56:ASP:CG	1:B:60:ARG:HH12	2.07	0.57
1:A:67:LEU:HG	1:A:69:GLN:HE21	1.70	0.57
1:A:243:THR:H	1:A:246:HIS:CD2	2.21	0.57
1:A:45:THR:HG23	1:A:47:GLU:HG3	1.86	0.57
1:A:110:GLN:HG2	3:A:344:HOH:O	2.05	0.56
1:B:133:ASN:O	1:B:134:HIS:HB2	2.05	0.56
1:B:40:ARG:O	1:B:43:ILE:HG12	2.05	0.56
1:A:213:ILE:HD13	1:A:256:GLN:HE22	1.70	0.56
1:A:102:LYS:HG3	1:A:156:CYS:SG	2.46	0.56
1:B:56:ASP:O	1:B:59:ILE:HG22	2.06	0.56
1:B:131:ARG:NH2	1:B:289:ASP:OD2	2.37	0.56
1:A:217:ARG:HB2	1:A:220:LEU:HD12	1.88	0.56
1:A:52:PRO:HG2	1:A:54:TYR:CE1	2.40	0.55
1:A:41:HIS:HA	1:A:54:TYR:HE2	1.70	0.55

*Continued on next page...*

*Continued from previous page...*

Atom-1	Atom-2	Distance(Å)	Clash(Å)
1:A:188:ARG:HH11	1:A:188:ARG:HB3	1.71	0.55
1:A:225:THR:HB	3:A:374:HOH:O	2.05	0.55
1:B:247:VAL:HB	1:B:261:VAL:HG11	1.88	0.55
1:B:202:LEU:HD23	3:B:1157:HOH:O	2.07	0.55
1:A:127:GLN:HA	1:A:127:GLN:HE21	1.71	0.55
1:B:164:HIS:NE2	1:B:175:THR:CG2	2.70	0.55
1:A:167:LEU:HD21	1:A:185:PHE:CE1	2.42	0.55
1:B:211:ALA:HA	1:B:282:LEU:HD13	1.89	0.55
1:B:44:CYS:SG	1:B:49:MET:HE1	2.47	0.55
1:B:212:VAL:HA	1:B:216:ASP:O	2.07	0.55
1:A:286:ILE:HG13	1:A:287:LEU:N	2.22	0.55
1:B:190:THR:O	2:B:1145:ENB:H232	2.06	0.55
1:B:242:LEU:HA	1:B:246:HIS:HD2	1.72	0.55
1:B:164:HIS:CD2	1:B:175:THR:HG22	2.42	0.54
1:A:36:VAL:HG21	1:A:68:VAL:HG11	1.89	0.54
1:B:31:TRP:CD2	1:B:95:ASN:HB2	2.42	0.54
1:B:131:ARG:HD3	1:B:132:PRO:HD2	1.88	0.54
1:B:172:HIS:HD2	2:B:1145:ENB:O5	1.91	0.54
1:A:161:TYR:CE1	1:A:174:GLY:HA3	2.43	0.54
1:A:286:ILE:HG13	1:A:287:LEU:H	1.72	0.54
1:B:49:MET:HA	1:B:49:MET:HE3	1.87	0.54
1:A:208:LEU:HD11	1:A:268:LEU:HG	1.90	0.54
1:B:299:GLN:O	1:B:299:GLN:HG2	2.08	0.54
1:B:207:TRP:CZ3	1:B:287:LEU:HA	2.43	0.54
1:B:162:MET:O	1:B:164:HIS:HD2	1.91	0.54
1:A:100:LYS:HD3	1:A:155:ASP:OD2	2.08	0.54
1:A:6:MET:CE	1:A:299:GLN:HG2	2.38	0.53
1:A:141:LEU:HD12	1:A:141:LEU:N	2.23	0.53
1:B:92:ASP:OD1	1:B:93:THR:N	2.42	0.53
1:B:233:VAL:HG11	1:B:269:LYS:HG3	1.90	0.53
1:B:167:LEU:HD21	1:B:185:PHE:CZ	2.44	0.53
1:B:251:GLY:O	1:B:254:SER:HB3	2.09	0.53
1:B:149:GLY:HA3	1:B:161:TYR:HB3	1.91	0.53
1:B:200:ILE:O	1:B:204:VAL:HG23	2.08	0.53
1:B:131:ARG:HD2	1:B:137:LYS:HE2	1.90	0.53
1:B:76:ARG:HG2	1:B:76:ARG:NH1	2.24	0.52
1:B:207:TRP:CE2	1:B:288:GLU:HB3	2.44	0.52
1:B:145:CYS:HB2	2:B:1145:ENB:O7	2.09	0.52
1:B:276:MET:HE3	1:B:281:ILE:HG13	1.90	0.52
1:B:49:MET:CE	1:B:52:PRO:HG3	2.39	0.52
1:A:131:ARG:HH22	1:A:289:ASP:CG	2.10	0.52
1:B:207:TRP:CD2	1:B:288:GLU:HB3	2.45	0.52

*Continued on next page...*

*Continued from previous page...*

Atom-1	Atom-2	Distance(Å)	Clash(Å)
1:B:206:ALA:O	1:B:296:VAL:HG21	2.09	0.52
1:B:90:LYS:N	1:B:90:LYS:HD2	2.25	0.52
1:B:44:CYS:SG	1:B:54:TYR:CE2	3.03	0.52
1:B:49:MET:SD	2:B:1145:ENB:C8	2.97	0.52
1:A:226:THR:HG22	1:A:228:ASN:H	1.74	0.52
1:A:167:LEU:CD1	1:A:167:LEU:N	2.73	0.52
1:A:140:PHE:C	1:A:141:LEU:HD12	2.30	0.52
1:B:276:MET:CE	1:B:281:ILE:HG13	2.40	0.51
1:B:128:CYS:SG	1:B:136:ILE:CD1	2.99	0.51
1:A:222:ARG:HG2	1:A:222:ARG:NH1	2.25	0.51
1:A:127:GLN:HA	1:A:127:GLN:NE2	2.25	0.51
1:B:192:GLN:N	2:B:1145:ENB:C24	2.73	0.51
1:A:31:TRP:CD2	1:A:95:ASN:HB2	2.45	0.51
1:A:41:HIS:CG	2:A:307:ENB:H9	2.46	0.51
1:A:213:ILE:HD13	1:A:256:GLN:NE2	2.26	0.51
1:A:200:ILE:HG21	1:A:203:ASN:ND2	2.26	0.50
1:A:59:ILE:HG22	1:A:59:ILE:O	2.11	0.50
1:B:194:ALA:O	1:B:195:GLY:O	2.29	0.50
1:A:249:ILE:HG22	1:A:293:PRO:HG2	1.91	0.50
1:B:175:THR:OG1	1:B:179:GLY:C	2.50	0.50
1:B:244:GLN:O	1:B:247:VAL:HG22	2.12	0.50
1:A:45:THR:O	1:A:47:GLU:N	2.45	0.50
1:B:188:ARG:HG3	3:B:1181:HOH:O	2.11	0.49
1:B:233:VAL:O	1:B:236:LYS:HB2	2.12	0.49
1:A:133:ASN:O	1:A:134:HIS:HB2	2.11	0.49
1:B:166:GLU:N	2:B:1145:ENB:O2	2.45	0.49
1:B:163:HIS:HE1	1:B:172:HIS:HB3	1.75	0.49
1:B:205:LEU:CD2	1:B:268:LEU:HD12	2.42	0.49
1:B:126:TYR:OH	1:B:140:PHE:HE1	1.95	0.49
1:A:131:ARG:HB2	1:A:135:THR:O	2.12	0.49
1:A:40:ARG:HG2	1:A:85:CYS:O	2.11	0.49
1:A:198:THR:HG22	1:A:238:ASN:OD1	2.13	0.49
1:B:148:VAL:HG22	3:B:1177:HOH:O	2.12	0.49
1:A:4:ARG:NE	1:B:137:LYS:O	2.44	0.49
1:B:68:VAL:HG22	1:B:75:LEU:HB2	1.94	0.49
1:A:190:THR:OG1	1:A:191:ALA:N	2.46	0.49
1:B:44:CYS:SG	1:B:49:MET:CE	3.01	0.49
1:A:188:ARG:NH1	1:A:188:ARG:CB	2.76	0.49
1:A:13:VAL:HG21	1:A:150:PHE:CD2	2.48	0.48
1:B:256:GLN:O	1:B:257:THR:HG23	2.13	0.48
1:A:276:MET:O	1:A:279:ARG:N	2.39	0.48
1:A:31:TRP:CE2	1:A:95:ASN:HB2	2.48	0.48

*Continued on next page...*

*Continued from previous page...*

Atom-1	Atom-2	Distance(Å)	Clash(Å)
1:B:109:GLY:HA2	1:B:200:ILE:CD1	2.43	0.48
2:B:1145:ENB:N1	2:B:1145:ENB:H10	2.22	0.48
1:B:5:LYS:HA	1:B:291:PHE:CE2	2.49	0.48
1:A:102:LYS:HD3	3:A:324:HOH:O	2.14	0.48
1:B:14:GLU:HB3	1:B:122:PRO:HG2	1.95	0.48
1:B:111:THR:HG22	1:B:129:ALA:HB2	1.95	0.48
1:A:8:PHE:HB3	1:A:152:ILE:HD12	1.95	0.48
1:A:168:PRO:HD3	2:A:307:ENB:H242	1.94	0.48
1:A:212:VAL:HG11	1:A:259:ILE:CD1	2.43	0.48
1:A:188:ARG:HH11	1:A:188:ARG:CB	2.26	0.48
2:B:1145:ENB:H10	2:B:1145:ENB:H26	1.96	0.48
1:B:47:GLU:CD	1:B:47:GLU:H	2.16	0.48
1:A:114:VAL:HG11	1:A:140:PHE:CZ	2.49	0.48
1:A:236:LYS:HE3	3:A:335:HOH:O	2.14	0.48
1:B:256:GLN:C	1:B:257:THR:HG23	2.35	0.47
1:A:6:MET:HE2	1:A:299:GLN:HG2	1.95	0.47
1:B:106:ILE:HG23	1:B:160:CYS:CB	2.45	0.47
1:B:109:GLY:HA2	1:B:200:ILE:HD13	1.96	0.47
1:B:67:LEU:HD11	1:B:74:GLN:NE2	2.29	0.47
1:B:168:PRO:HD3	2:B:1145:ENB:H242	1.97	0.47
1:B:86:LEU:HG	1:B:179:GLY:HA2	1.97	0.47
1:B:244:GLN:NE2	1:B:247:VAL:CG2	2.77	0.47
1:A:63:ASN:HB3	1:A:77:VAL:O	2.14	0.47
1:B:46:ALA:HB3	1:B:47:GLU:OE2	2.15	0.47
1:B:192:GLN:HB2	2:B:1145:ENB:H243	1.95	0.46
1:B:17:MET:HE1	1:B:28:ASN:HB3	1.97	0.46
1:B:253:LEU:O	1:B:256:GLN:O	2.34	0.46
1:A:200:ILE:HD12	1:A:289:ASP:O	2.15	0.46
1:B:131:ARG:HD3	1:B:132:PRO:CD	2.45	0.46
1:B:21:THR:HB	1:B:67:LEU:HB3	1.96	0.46
1:B:277:ASN:C	1:B:279:ARG:H	2.19	0.46
1:B:104:VAL:O	1:B:160:CYS:HA	2.14	0.46
1:B:262:LEU:O	1:B:265:CYS:HB2	2.15	0.46
1:B:176:ASP:C	1:B:178:GLU:H	2.18	0.46
1:A:244:GLN:NE2	1:A:244:GLN:HA	2.31	0.46
1:B:63:ASN:HB3	1:B:77:VAL:O	2.16	0.46
1:B:163:HIS:HE2	2:B:1145:ENB:H152	1.81	0.46
1:A:117:CYS:O	1:A:144:SER:HA	2.16	0.46
1:B:49:MET:HE1	1:B:52:PRO:HG3	1.97	0.46
1:A:276:MET:O	1:A:277:ASN:C	2.54	0.46
1:B:126:TYR:HH	1:B:140:PHE:HE1	1.56	0.45
1:B:40:ARG:HG3	1:B:54:TYR:CE2	2.50	0.45

*Continued on next page...*

*Continued from previous page...*

Atom-1	Atom-2	Distance(Å)	Clash(Å)
1:A:113:SER:OG	1:A:127:GLN:NE2	2.44	0.45
1:A:260:ALA:O	1:A:263:ASP:HB2	2.16	0.45
1:B:54:TYR:CZ	1:B:187:ASP:HB3	2.51	0.45
1:B:106:ILE:HG23	1:B:160:CYS:HB2	1.98	0.45
1:B:5:LYS:NZ	1:B:290:GLU:HB2	2.31	0.45
1:B:247:VAL:CB	1:B:261:VAL:HG11	2.46	0.45
1:A:276:MET:HE3	1:A:281:ILE:HG13	1.98	0.45
1:B:30:LEU:HD12	1:B:148:VAL:HG11	1.99	0.45
1:A:175:THR:HG22	1:A:181:PHE:CA	2.43	0.45
1:B:288:GLU:HG2	1:B:291:PHE:CE1	2.51	0.45
1:A:247:VAL:HG13	1:A:261:VAL:HB	1.98	0.45
1:A:276:MET:HE3	1:A:281:ILE:N	2.32	0.45
1:B:10:SER:HB2	1:B:115:LEU:HD13	1.99	0.45
1:B:204:VAL:HA	1:B:288:GLU:O	2.17	0.45
1:A:263:ASP:O	1:A:266:ALA:HB3	2.17	0.45
1:B:243:THR:N	1:B:246:HIS:HD2	2.13	0.45
1:B:161:TYR:CE1	1:B:174:GLY:HA3	2.52	0.44
1:B:16:CYS:HB3	1:B:30:LEU:HD23	1.99	0.44
1:A:40:ARG:CD	1:A:85:CYS:HA	2.46	0.44
1:B:207:TRP:O	1:B:210:ALA:HB3	2.16	0.44
1:B:262:LEU:HA	1:B:265:CYS:HB2	2.00	0.44
1:B:32:LEU:HD13	1:B:101:TYR:CD1	2.53	0.44
1:A:125:VAL:O	1:A:125:VAL:HG13	2.16	0.44
1:B:209:TYR:O	1:B:213:ILE:HG13	2.17	0.44
1:A:208:LEU:O	1:A:211:ALA:HB3	2.17	0.43
1:A:104:VAL:HG13	1:A:104:VAL:O	2.18	0.43
1:A:40:ARG:HD3	1:A:85:CYS:HA	2.00	0.43
1:B:70:ALA:HB2	1:B:75:LEU:CD1	2.46	0.43
1:A:4:ARG:NH2	1:B:290:GLU:OE1	2.51	0.43
1:B:213:ILE:HG21	1:B:300:CYS:HB3	1.99	0.43
1:B:13:VAL:HG21	1:B:150:PHE:CG	2.53	0.43
1:B:192:GLN:N	2:B:1145:ENB:H243	2.34	0.43
1:B:132:PRO:HG2	1:B:198:THR:O	2.18	0.43
1:A:247:VAL:HG13	1:A:261:VAL:CB	2.49	0.43
1:B:263:ASP:O	1:B:266:ALA:HB3	2.19	0.43
1:B:222:ARG:CG	1:B:222:ARG:HH11	2.31	0.43
1:B:188:ARG:HB3	1:B:190:THR:HG23	2.00	0.43
2:A:307:ENB:N2	2:A:307:ENB:H223	2.33	0.43
1:A:276:MET:HE3	1:A:281:ILE:H	1.83	0.43
1:B:153:ASP:O	1:B:154:TYR:HB2	2.17	0.43
1:A:277:ASN:HD22	1:A:277:ASN:H	1.67	0.43
1:B:222:ARG:NH1	1:B:222:ARG:HG2	2.31	0.43

*Continued on next page...*

*Continued from previous page...*

Atom-1	Atom-2	Distance(Å)	Clash(Å)
1:A:114:VAL:HG11	1:A:140:PHE:HZ	1.84	0.43
1:B:145:CYS:HB2	2:B:1145:ENB:C27	2.49	0.43
1:A:143:GLY:HA2	2:A:307:ENB:H282	2.01	0.43
1:A:247:VAL:HG22	1:A:261:VAL:HG11	2.01	0.43
1:B:19:GLN:NE2	1:B:119:ASN:CB	2.81	0.43
1:A:43:ILE:HG23	1:A:87:LEU:HD11	2.00	0.43
1:B:126:TYR:OH	1:B:140:PHE:CE1	2.68	0.43
1:B:268:LEU:HD22	1:B:272:LEU:HG	2.01	0.43
1:B:19:GLN:HE21	1:B:119:ASN:CA	2.31	0.42
1:A:54:TYR:O	1:A:55:GLU:C	2.57	0.42
1:A:67:LEU:CG	1:A:69:GLN:HE21	2.30	0.42
1:A:127:GLN:CA	1:A:127:GLN:HE21	2.29	0.42
1:A:41:HIS:ND1	2:A:307:ENB:H9	2.35	0.42
1:A:277:ASN:C	1:A:279:ARG:H	2.22	0.42
1:B:244:GLN:NE2	1:B:248:ASP:OD1	2.44	0.42
1:B:60:ARG:O	1:B:61:LYS:HD3	2.19	0.42
1:B:225:THR:O	1:B:262:LEU:HB3	2.20	0.42
1:A:154:TYR:HB2	1:A:155:ASP:H	1.59	0.42
1:A:21:THR:HB	1:A:67:LEU:HB3	2.02	0.42
1:B:49:MET:HE2	1:B:49:MET:CA	2.32	0.42
1:A:163:HIS:CE1	1:A:165:MET:O	2.73	0.42
1:A:91:VAL:HG23	1:A:93:THR:O	2.19	0.42
1:B:249:ILE:O	1:B:252:PRO:HD2	2.19	0.42
1:B:140:PHE:CD2	1:B:163:HIS:CD2	3.08	0.42
1:A:40:ARG:HG3	1:A:54:TYR:CE2	2.55	0.42
1:B:108:PRO:HA	1:B:130:MET:CG	2.50	0.42
1:A:113:SER:O	1:A:149:GLY:HA2	2.20	0.42
1:B:212:VAL:HG11	1:B:259:ILE:HD12	2.01	0.42
1:A:35:THR:HB	3:A:333:HOH:O	2.19	0.42
1:B:128:CYS:SG	1:B:136:ILE:HG13	2.60	0.42
1:A:199:THR:HG21	1:A:239:TYR:CZ	2.54	0.42
1:A:188:ARG:HH12	1:A:190:THR:HG22	1.83	0.42
1:A:227:LEU:C	1:A:227:LEU:HD23	2.40	0.42
1:B:288:GLU:HG2	1:B:291:PHE:HE1	1.83	0.42
1:B:117:CYS:O	1:B:144:SER:HA	2.20	0.41
1:A:188:ARG:NH1	1:A:190:THR:HG22	2.34	0.41
1:A:137:LYS:HB2	1:B:4:ARG:HH21	1.85	0.41
1:A:280:THR:HB	1:A:283:GLY:O	2.20	0.41
1:A:118:TYR:CE1	1:A:144:SER:HB3	2.55	0.41
1:A:18:VAL:O	1:A:29:GLY:N	2.45	0.41
1:B:113:SER:OG	1:B:127:GLN:NE2	2.53	0.41
1:A:198:THR:HA	1:A:238:ASN:ND2	2.35	0.41

*Continued on next page...*



*Continued from previous page...*

Atom-1	Atom-2	Distance(Å)	Clash(Å)
1:B:143:GLY:HA2	2:B:1145:ENB:H282	2.02	0.41
1:A:230:PHE:CZ	1:A:268:LEU:HD13	2.55	0.41
1:A:165:MET:SD	1:A:187:ASP:HA	2.61	0.41
1:B:111:THR:HA	1:B:129:ALA:HA	2.01	0.41
1:B:271:LEU:HD13	1:B:287:LEU:HD21	2.02	0.41
1:A:202:LEU:HD22	1:A:246:HIS:ND1	2.35	0.41
1:B:40:ARG:C	1:B:42:VAL:H	2.22	0.41
1:B:209:TYR:OH	1:B:261:VAL:HA	2.21	0.41
1:A:21:THR:HG23	1:A:26:THR:OG1	2.20	0.41
1:B:166:GLU:O	2:B:1145:ENB:H20	2.21	0.41
1:B:19:GLN:HE21	1:B:119:ASN:CB	2.34	0.41
1:A:277:ASN:HD22	1:A:277:ASN:N	2.18	0.41
1:A:276:MET:CE	1:A:281:ILE:N	2.84	0.41
1:B:19:GLN:HG2	1:B:26:THR:HG23	2.03	0.41
1:A:210:ALA:HB2	1:A:296:VAL:CG1	2.48	0.41
1:A:30:LEU:HD11	1:A:159:PHE:CD1	2.55	0.41
1:B:284:SER:OG	1:B:286:ILE:O	2.25	0.40
1:B:14:GLU:C	1:B:16:CYS:H	2.24	0.40
1:B:5:LYS:HA	1:B:291:PHE:CZ	2.57	0.40
1:B:61:LYS:HE3	3:B:1160:HOH:O	2.21	0.40
1:A:106:ILE:HD13	1:A:160:CYS:CB	2.51	0.40
1:A:16:CYS:HB3	1:A:30:LEU:HD23	2.03	0.40
1:B:248:ASP:HA	3:B:1189:HOH:O	2.21	0.40
1:B:49:MET:CA	1:B:49:MET:CE	2.80	0.40
1:B:256:GLN:O	1:B:257:THR:OG1	2.38	0.40
1:B:169:THR:HB	1:B:171:VAL:HG22	2.03	0.40
1:A:189:GLN:HE22	2:A:307:ENB:C6	2.35	0.40
1:A:5:LYS:HA	1:A:291:PHE:CE2	2.56	0.40
1:A:212:VAL:HG11	1:A:259:ILE:HD11	2.02	0.40
1:A:111:THR:HB	1:A:128:CYS:O	2.22	0.40

There are no symmetry-related clashes.

## 5.3 Torsion angles

### 5.3.1 Protein backbone ⓘ

In the following table, the Percentiles column shows the percent Ramachandran outliers of the chain as a percentile score with respect to all X-ray entries followed by that with respect to entries of similar resolution. The Analysed column shows the number of residues for which the backbone conformation was analysed, and the total number of residues.



Mol	Chain	Analysed	Favoured	Allowed	Outliers	Percentiles	
1	A	299/311 (96%)	263 (88%)	31 (10%)	5 (2%)	14	33
1	B	300/311 (96%)	269 (90%)	25 (8%)	6 (2%)	11	28
All	All	599/622 (96%)	532 (89%)	56 (9%)	11 (2%)	13	31

All (11) Ramachandran outliers are listed below:

Mol	Chain	Res	Type
1	A	46	ALA
1	A	190	THR
1	A	302	GLY
1	B	195	GLY
1	B	46	ALA
1	B	177	LEU
1	B	255	ALA
1	B	154	TYR
1	B	187	ASP
1	A	251	GLY
1	A	43	ILE

### 5.3.2 Protein sidechains ⓘ

In the following table, the Percentiles column shows the percent sidechain outliers of the chain as a percentile score with respect to all X-ray entries followed by that with respect to entries of similar resolution. The Analysed column shows the number of residues for which the sidechain conformation was analysed, and the total number of residues.

Mol	Chain	Analysed	Rotameric	Outliers	Percentiles	
1	A	259/266 (97%)	245 (95%)	14 (5%)	31	61
1	B	259/266 (97%)	246 (95%)	13 (5%)	34	66
All	All	518/532 (97%)	491 (95%)	27 (5%)	32	63

All (27) residues with a non-rotameric sidechain are listed below:

Mol	Chain	Res	Type
1	A	30	LEU
1	A	48	ASP
1	A	51	ASN
1	A	57	LEU
1	A	77	VAL
1	A	106	ILE

*Continued on next page...*

*Continued from previous page...*

Mol	Chain	Res	Type
1	A	166	GLU
1	A	167	LEU
1	A	169	THR
1	A	189	GLN
1	A	216	ASP
1	A	227	LEU
1	A	268	LEU
1	A	279	ARG
1	B	27	LEU
1	B	30	LEU
1	B	49	MET
1	B	77	VAL
1	B	127	GLN
1	B	131	ARG
1	B	136	ILE
1	B	154	TYR
1	B	167	LEU
1	B	214	ASN
1	B	228	ASN
1	B	268	LEU
1	B	285	THR

Some sidechains can be flipped to improve hydrogen bonding and reduce clashes. All (23) such sidechains are listed below:

Mol	Chain	Res	Type
1	A	19	GLN
1	A	51	ASN
1	A	69	GLN
1	A	74	GLN
1	A	119	ASN
1	A	127	GLN
1	A	142	ASN
1	A	151	ASN
1	A	189	GLN
1	A	244	GLN
1	A	246	HIS
1	A	256	GLN
1	A	277	ASN
1	A	299	GLN
1	B	19	GLN
1	B	69	GLN
1	B	127	GLN

*Continued on next page...*

*Continued from previous page...*

Mol	Chain	Res	Type
1	B	172	HIS
1	B	189	GLN
1	B	214	ASN
1	B	246	HIS
1	B	274	ASN
1	B	299	GLN

### 5.3.3 RNA ⓘ

There are no RNA chains in this entry.

## 5.4 Non-standard residues in protein, DNA, RNA chains ⓘ

There are no non-standard protein/DNA/RNA residues in this entry.

## 5.5 Carbohydrates ⓘ

There are no carbohydrates in this entry.

## 5.6 Ligand geometry ⓘ

2 ligands are modelled in this entry.

In the following table, the Counts columns list the number of bonds (or angles) for which Mogul statistics could be retrieved, the number of bonds (or angles) that are observed in the model and the number of bonds (or angles) that are defined in the chemical component dictionary. The Link column lists molecule types, if any, to which the group is linked. The Z score for a bond length (or angle) is the number of standard deviations the observed value is removed from the expected value. A bond length (or angle) with  $|Z| > 2$  is considered an outlier worth inspection. RMSZ is the root-mean-square of all Z scores of the bond lengths (or angles).

Mol	Type	Chain	Res	Link	Bond lengths			Bond angles		
					Counts	RMSZ	$\# Z  > 2$	Counts	RMSZ	$\# Z  > 2$
2	ENB	A	307	1	41,41,41	2.69	6 (14%)	56,56,56	4.42	14 (25%)
2	ENB	B	1145	1	41,41,41	2.48	8 (19%)	56,56,56	4.00	17 (30%)

In the following table, the Chirals column lists the number of chiral outliers, the number of chiral centers analysed, the number of these observed in the model and the number defined in the chemical component dictionary. Similar counts are reported in the Torsion and Rings columns. '-' means no outliers of that kind were identified.

Mol	Type	Chain	Res	Link	Chirals	Torsions	Rings
2	ENB	A	307	1	1/1/11/17	0/45/55/55	0/2/2/2
2	ENB	B	1145	1	1/1/11/17	0/45/55/55	0/2/2/2

All (14) bond length outliers are listed below:

Mol	Chain	Res	Type	Atoms	Z	Observed(Å)	Ideal(Å)
2	B	1145	ENB	C4-C3	-9.51	1.33	1.53
2	A	307	ENB	C4-C3	-9.49	1.33	1.53
2	A	307	ENB	C3-N1	9.21	1.55	1.34
2	B	1145	ENB	C26-C2	8.27	1.55	1.32
2	A	307	ENB	C26-C2	8.27	1.55	1.32
2	B	1145	ENB	C3-N1	5.03	1.45	1.34
2	B	1145	ENB	C5-C4	-3.94	1.46	1.52
2	A	307	ENB	C15-C16	-3.68	1.47	1.54
2	B	1145	ENB	O3-C14	-2.90	1.42	1.48
2	A	307	ENB	O3-C14	-2.84	1.42	1.48
2	B	1145	ENB	C15-C16	-2.83	1.48	1.54
2	B	1145	ENB	O1-C3	2.75	1.28	1.23
2	A	307	ENB	O1-C3	2.72	1.28	1.23
2	B	1145	ENB	C1-N1	-2.40	1.42	1.46

All (31) bond angle outliers are listed below:

Mol	Chain	Res	Type	Atoms	Z	Observed(°)	Ideal(°)
2	A	307	ENB	C15-C1-N1	23.48	162.86	109.88
2	B	1145	ENB	C15-C1-N1	21.87	159.21	109.88
2	A	307	ENB	C2-C1-N1	-15.74	81.20	110.71
2	B	1145	ENB	C2-C1-N1	-13.45	85.48	110.71
2	A	307	ENB	C1-N1-C3	-12.04	103.96	123.36
2	B	1145	ENB	C1-N1-C3	-7.89	110.64	123.36
2	B	1145	ENB	O1-C3-C4	-5.88	110.38	120.52
2	A	307	ENB	O1-C3-C4	-5.88	110.39	120.52
2	B	1145	ENB	C15-C16-C17	-5.48	95.72	117.26
2	A	307	ENB	C15-C16-C17	-5.24	96.63	117.26
2	B	1145	ENB	O3-C13-N3	3.51	116.00	110.04
2	A	307	ENB	O3-C13-N3	3.49	115.96	110.04
2	B	1145	ENB	C5-C4-C3	-3.42	100.19	107.77
2	B	1145	ENB	C5-C4-N2	3.22	121.63	112.94
2	A	307	ENB	C2-C26-C27	-3.20	114.74	122.63
2	B	1145	ENB	C2-C26-C27	-3.17	114.80	122.63
2	A	307	ENB	O1-C3-N1	3.05	128.81	122.93
2	A	307	ENB	C5-C4-C3	2.74	113.85	107.77
2	B	1145	ENB	O1-C3-N1	2.63	127.99	122.93

*Continued on next page...*

*Continued from previous page...*

Mol	Chain	Res	Type	Atoms	Z	Observed(°)	Ideal(°)
2	B	1145	ENB	C3-C4-N2	2.45	115.49	108.15
2	A	307	ENB	C3-C4-N2	2.44	115.45	108.15
2	A	307	ENB	O4-C13-N3	-2.23	120.93	124.90
2	B	1145	ENB	O4-C13-N3	-2.21	120.96	124.90
2	A	307	ENB	C15-C1-C2	2.19	114.72	110.94
2	B	1145	ENB	C15-C1-C2	2.18	114.70	110.94
2	B	1145	ENB	C16-C15-C1	2.18	118.94	114.59
2	B	1145	ENB	C15-C16-C19	2.16	117.37	112.77
2	B	1145	ENB	C1-C2-C26	-2.07	114.37	126.93
2	A	307	ENB	C1-C2-C26	-2.07	114.36	126.93
2	B	1145	ENB	O5-C19-N4	-2.00	122.10	125.41
2	A	307	ENB	O5-C19-N4	-2.00	122.11	125.41

All (2) chirality outliers are listed below:

Mol	Chain	Res	Type	Atom
2	B	1145	ENB	C1
2	A	307	ENB	C1

There are no torsion outliers.

There are no ring outliers.

## 5.7 Other polymers ⓘ

There are no such residues in this entry.

## 5.8 Polymer linkage issues

There are no chain breaks in this entry.

## 6 Fit of model and data ⓘ

### 6.1 Protein, DNA and RNA chains ⓘ

In the following table, the column labelled ‘#RSRZ> 2’ contains the number (and percentage) of RSRZ outliers, followed by percent RSRZ outliers for the chain as percentile scores relative to all X-ray entries and entries of similar resolution. The OWAB column contains the minimum, median, 95<sup>th</sup> percentile and maximum values of the occupancy-weighted average B-factor per residue. The column labelled ‘Q< 0.9’ lists the number of (and percentage) of residues with an average occupancy less than 0.9.

Mol	Chain	Analysed	<RSRZ>	#RSRZ>2	OWAB(Å <sup>2</sup> )	Q<0.9
1	A	301/311 (96%)	-0.08	4 (1%) 74 79	11, 31, 56, 78	0
1	B	302/311 (97%)	0.04	6 (1%) 62 68	17, 32, 57, 72	0
All	All	603/622 (96%)	-0.02	10 (1%) 67 73	11, 31, 57, 78	0

All (10) RSRZ outliers are listed below:

Mol	Chain	Res	Type	RSRZ
1	B	302	GLY	5.4
1	A	302	GLY	5.0
1	A	303	VAL	3.0
1	B	191	ALA	2.6
1	A	278	GLY	2.5
1	B	78	ILE	2.4
1	A	50	LEU	2.4
1	B	193	ALA	2.3
1	B	1	SER	2.3
1	B	75	LEU	2.0

### 6.2 Non-standard residues in protein, DNA, RNA chains ⓘ

There are no non-standard protein/DNA/RNA residues in this entry.

### 6.3 Carbohydrates ⓘ

There are no carbohydrates in this entry.

## 6.4 Ligands

In the following table, the Atoms column lists the number of modelled atoms in the group and the number defined in the chemical component dictionary. LLDF column lists the quality of electron density of the group with respect to its neighbouring residues in protein, DNA or RNA chains. The B-factors column lists the minimum, median, 95<sup>th</sup> percentile and maximum values of B factors of atoms in the group. The column labelled 'Q< 0.9' lists the number of atoms with occupancy less than 0.9.

Mol	Type	Chain	Res	Atoms	RSR	LLDF	B-factors(Å <sup>2</sup> )	Q<0.9
2	ENB	B	1145	40/40	0.35	2.95	68,83,95,96	0
2	ENB	A	307	40/40	0.31	2.02	50,58,66,68	0

## 6.5 Other polymers

There are no such residues in this entry.