



Full wwPDB X-ray Structure Validation Report ⓘ

Feb 28, 2014 – 01:08 PM GMT

PDB ID : 3D2P
Title : Crystal structure of N-acetylglutamate synthase from *Neisseria gonorrhoeae* complexed with coenzyme A and L-arginine
Authors : Shi, D.; Min, L.; Jin, Z.; Allewell, N.M.; Tuchman, M.
Deposited on : 2008-05-08
Resolution : 2.56 Å(reported)

This is a full wwPDB validation report for a publicly released PDB entry.
We welcome your comments at validation@mail.wwpdb.org
A user guide is available at <http://wwpdb.org/ValidationPDFNotes.html>

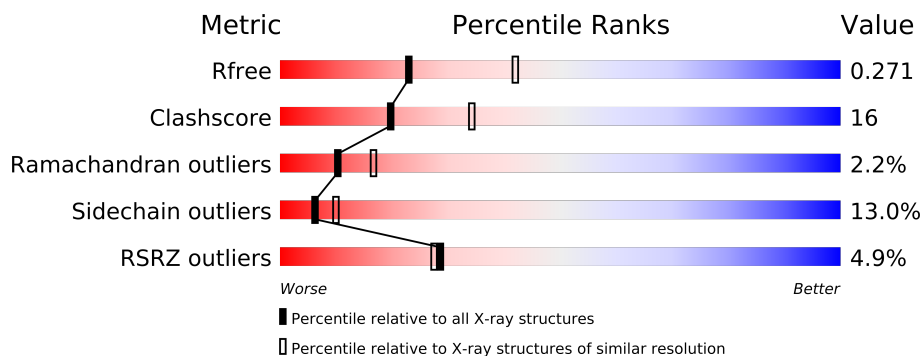
The following versions of software and data (see [references](#)) were used in the production of this report:

MolProbity : 4.02b-467
Mogul : 1.15 2013
Xtriage (Phenix) : dev-1323
EDS : stable22639
Percentile statistics : 21963
Refmac : 5.8.0049
CCP4 : 6.3.0 (Settle)
Ideal geometry (proteins) : Engh & Huber (2001)
Ideal geometry (DNA, RNA) : Parkinson et. al. (1996)
Validation Pipeline (wwPDB-VP) : stable22683

1 Overall quality at a glance

The reported resolution of this entry is 2.56 Å.

Percentile scores (ranging between 0-100) for global validation metrics of the entry are shown in the following graphic. The table shows the number of entries on which the scores are based.



Metric	Whole archive (#Entries)	Similar resolution (#Entries, resolution range(Å))
R_{free}	66092	2347 (2.60-2.52)
Clashscore	79885	2876 (2.60-2.52)
Ramachandran outliers	78287	2826 (2.60-2.52)
Sidechain outliers	78261	2826 (2.60-2.52)
RSRZ outliers	66119	2347 (2.60-2.52)

The table below summarises the geometric issues observed across the polymeric chains and their fit to the electron density. The red, orange, yellow and green segments on the lower bar indicate the fraction of residues that contain outliers for ≥ 3 , 2, 1 and 0 types of geometric quality criteria. The upper red bar (where present) indicates the fraction of residues that have poor fit to the electron density.

Mol	Chain	Length	Quality of chain
1	A	456	
1	B	456	

2 Entry composition

There are 4 unique types of molecules in this entry. The entry contains 6745 atoms, of which 0 are hydrogen and 0 are deuterium.

In the tables below, the ZeroOcc column contains the number of atoms modelled with zero occupancy, the AltConf column contains the number of residues with at least one atom in alternate conformation and the Trace column contains the number of residues modelled with at most 2 atoms.

- Molecule 1 is a protein called Putative acetylglutamate synthase.

Mol	Chain	Residues	Atoms					ZeroOcc	AltConf	Trace
1	A	424	Total	C	N	O	S	0	0	0
			3223	2016	593	605	9			
1	B	424	Total	C	N	O	S	0	0	0
			3223	2016	593	605	9			

There are 46 discrepancies between the modelled and reference sequences:

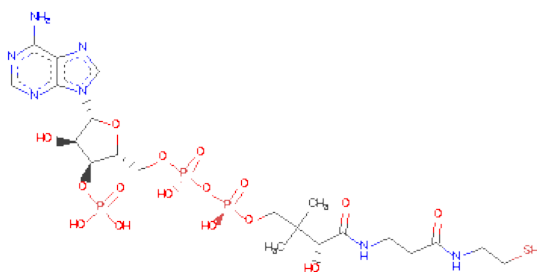
Chain	Residue	Modelled	Actual	Comment	Reference
A	-19	MET	-	EXPRESSION TAG	UNP Q5FAK7
A	-18	GLY	-	EXPRESSION TAG	UNP Q5FAK7
A	-17	SER	-	EXPRESSION TAG	UNP Q5FAK7
A	-16	SER	-	EXPRESSION TAG	UNP Q5FAK7
A	-15	HIS	-	EXPRESSION TAG	UNP Q5FAK7
A	-14	HIS	-	EXPRESSION TAG	UNP Q5FAK7
A	-13	HIS	-	EXPRESSION TAG	UNP Q5FAK7
A	-12	HIS	-	EXPRESSION TAG	UNP Q5FAK7
A	-11	HIS	-	EXPRESSION TAG	UNP Q5FAK7
A	-10	HIS	-	EXPRESSION TAG	UNP Q5FAK7
A	-9	SER	-	EXPRESSION TAG	UNP Q5FAK7
A	-8	SER	-	EXPRESSION TAG	UNP Q5FAK7
A	-7	GLY	-	EXPRESSION TAG	UNP Q5FAK7
A	-6	LEU	-	EXPRESSION TAG	UNP Q5FAK7
A	-5	VAL	-	EXPRESSION TAG	UNP Q5FAK7
A	-4	PRO	-	EXPRESSION TAG	UNP Q5FAK7
A	-3	ARG	-	EXPRESSION TAG	UNP Q5FAK7
A	-2	GLY	-	EXPRESSION TAG	UNP Q5FAK7
A	-1	SER	-	EXPRESSION TAG	UNP Q5FAK7
A	0	HIS	-	EXPRESSION TAG	UNP Q5FAK7
A	312	ILE	VAL	ENGINEERED	UNP Q5FAK7
A	336	ASN	ASP	ENGINEERED	UNP Q5FAK7
A	427	SER	PRO	ENGINEERED	UNP Q5FAK7
B	-19	MET	-	EXPRESSION TAG	UNP Q5FAK7
B	-18	GLY	-	EXPRESSION TAG	UNP Q5FAK7

Continued on next page...

Continued from previous page...

Chain	Residue	Modelled	Actual	Comment	Reference
B	-17	SER	-	EXPRESSION TAG	UNP Q5FAK7
B	-16	SER	-	EXPRESSION TAG	UNP Q5FAK7
B	-15	HIS	-	EXPRESSION TAG	UNP Q5FAK7
B	-14	HIS	-	EXPRESSION TAG	UNP Q5FAK7
B	-13	HIS	-	EXPRESSION TAG	UNP Q5FAK7
B	-12	HIS	-	EXPRESSION TAG	UNP Q5FAK7
B	-11	HIS	-	EXPRESSION TAG	UNP Q5FAK7
B	-10	HIS	-	EXPRESSION TAG	UNP Q5FAK7
B	-9	SER	-	EXPRESSION TAG	UNP Q5FAK7
B	-8	SER	-	EXPRESSION TAG	UNP Q5FAK7
B	-7	GLY	-	EXPRESSION TAG	UNP Q5FAK7
B	-6	LEU	-	EXPRESSION TAG	UNP Q5FAK7
B	-5	VAL	-	EXPRESSION TAG	UNP Q5FAK7
B	-4	PRO	-	EXPRESSION TAG	UNP Q5FAK7
B	-3	ARG	-	EXPRESSION TAG	UNP Q5FAK7
B	-2	GLY	-	EXPRESSION TAG	UNP Q5FAK7
B	-1	SER	-	EXPRESSION TAG	UNP Q5FAK7
B	0	HIS	-	EXPRESSION TAG	UNP Q5FAK7
B	312	ILE	VAL	ENGINEERED	UNP Q5FAK7
B	336	ASN	ASP	ENGINEERED	UNP Q5FAK7
B	427	SER	PRO	ENGINEERED	UNP Q5FAK7

- Molecule 2 is COENZYME A (three-letter code: COA) (formula: $C_{21}H_{36}N_7O_{16}P_3S$).



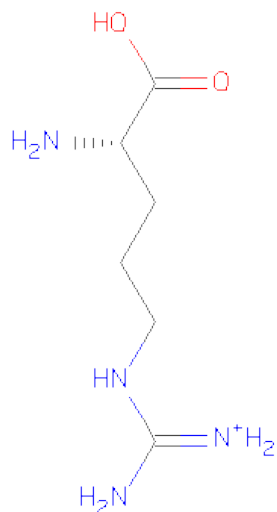
Mol	Chain	Residues	Atoms						ZeroOcc	AltConf
2	A	1	Total	C	N	O	P	S	0	0
			48	21	7	16	3	1		

Continued on next page...

Continued from previous page...

Mol	Chain	Residues	Atoms						ZeroOcc	AltConf
2	B	1	Total	C	N	O	P	S	0	0
			48	21	7	16	3	1		

- Molecule 3 is ARGININE (three-letter code: ARG) (formula: $C_6H_{15}N_4O_2$).



Mol	Chain	Residues	Atoms				ZeroOcc	AltConf
3	A	1	Total	C	N	O	0	0
			12	6	4	2		
3	B	1	Total	C	N	O	0	0
			12	6	4	2		

- Molecule 4 is water.

Mol	Chain	Residues	Atoms		ZeroOcc	AltConf
4	A	74	Total	O	0	0
			74	74		
4	B	105	Total	O	0	0
			105	105		

4 Data and refinement statistics

Property	Value	Source
Space group	P 3 1 2	Depositor
Cell constants a, b, c, α , β , γ	107.05Å 107.05Å 185.47Å 90.00° 90.00° 120.00°	Depositor
Resolution (Å)	20.00 – 2.56 44.97 – 2.56	Depositor EDS
% Data completeness (in resolution range)	90.8 (20.00-2.56) 90.8 (44.97-2.56)	Depositor EDS
R_{merge}	0.12	Depositor
R_{sym}	(Not available)	Depositor
$\langle I/\sigma(I) \rangle$ ¹	1.70 (at 2.58Å)	Xtriage
Refinement program	REFMAC 5.2.0005	Depositor
R, R_{free}	0.214 , 0.273 0.214 , 0.271	Depositor DCC
R_{free} test set	1786 reflections (5.26%)	DCC
Wilson B-factor (Å ²)	40.8	Xtriage
Anisotropy	0.013	Xtriage
Bulk solvent k_{sol} (e/Å ³), B_{sol} (Å ²)	0.33 , 34.1	EDS
Estimated twinning fraction	0.045 for -h,-k,l	Xtriage
L-test for twinning	$\langle L \rangle = 0.48$, $\langle L^2 \rangle = 0.31$	Xtriage
Outliers	2 of 35741 reflections (0.006%)	Xtriage
F_o, F_c correlation	0.93	EDS
Total number of atoms	6745	wwPDB-VP
Average B, all atoms (Å ²)	29.0	wwPDB-VP

Xtriage's analysis on translational NCS is as follows: *The largest off-origin peak in the Patterson function is 4.10% of the height of the origin peak. No significant pseudotranslation is detected.*

¹Intensities estimated from amplitudes.

5 Model quality

5.1 Standard geometry

Bond lengths and bond angles in the following residue types are not validated in this section: COA

The Z score for a bond length (or angle) is the number of standard deviations the observed value is removed from the expected value. A bond length (or angle) with $|Z| > 5$ is considered an outlier worth inspection. RMSZ is the root-mean-square of all Z scores of the bond lengths (or angles).

Mol	Chain	Bond lengths		Bond angles	
		RMSZ	$\# Z > 5$	RMSZ	$\# Z > 5$
1	A	0.84	5/3277 (0.2%)	0.94	8/4430 (0.2%)
1	B	0.84	2/3277 (0.1%)	0.91	5/4430 (0.1%)
All	All	0.84	7/6554 (0.1%)	0.93	13/8860 (0.1%)

Chiral center outliers are detected by calculating the chiral volume of a chiral center and verifying if the center is modelled as a planar moiety or with the opposite hand. A planarity outlier is detected by checking planarity of atoms in a peptide group, atoms in a mainchain group or atoms of a sidechain that are expected to be planar.

Mol	Chain	#Chirality outliers	#Planarity outliers
1	A	0	1

All (7) bond length outliers are listed below:

Mol	Chain	Res	Type	Atoms	Z	Observed(Å)	Ideal(Å)
1	A	387	ARG	NE-CZ	16.47	1.54	1.33
1	A	387	ARG	CZ-NH1	15.89	1.53	1.33
1	B	81	CYS	CB-SG	-9.65	1.65	1.82
1	A	350	ASP	C-N	8.13	1.52	1.34
1	A	433	ARG	CZ-NH1	5.67	1.40	1.33
1	B	111	CYS	CB-SG	-5.45	1.73	1.81
1	A	319	GLU	CB-CG	5.17	1.61	1.52

All (13) bond angle outliers are listed below:

Mol	Chain	Res	Type	Atoms	Z	Observed(°)	Ideal(°)
1	A	387	ARG	NE-CZ-NH1	-20.91	109.84	120.30
1	A	433	ARG	NE-CZ-NH2	-11.51	114.55	120.30
1	A	433	ARG	NE-CZ-NH1	9.72	125.16	120.30
1	A	387	ARG	NE-CZ-NH2	-9.40	115.60	120.30

Continued on next page...

Continued from previous page...

Mol	Chain	Res	Type	Atoms	Z	Observed(°)	Ideal(°)
1	B	259	LEU	CB-CG-CD2	-7.37	98.47	111.00
1	A	313	LEU	CA-CB-CG	7.34	132.18	115.30
1	B	22	ARG	NE-CZ-NH2	-6.97	116.81	120.30
1	B	22	ARG	NE-CZ-NH1	6.78	123.69	120.30
1	B	313	LEU	CA-CB-CG	6.06	129.24	115.30
1	A	387	ARG	CD-NE-CZ	-6.02	115.17	123.60
1	A	92	LEU	CA-CB-CG	5.76	128.55	115.30
1	B	277	ILE	N-CA-C	-5.72	95.56	111.00
1	A	277	ILE	N-CA-C	-5.17	97.03	111.00

There are no chirality outliers.

All (1) planarity outliers are listed below:

Mol	Chain	Res	Type	Group
1	A	387	ARG	Sidechain

5.2 Close contacts

In the following table, the Non-H and H(model) columns list the number of non-hydrogen atoms and hydrogen atoms in the chain respectively. The H(added) column lists the number of hydrogens added by MolProbity. The Clashes column lists the number of clashes within the asymmetric unit, and the number in parentheses is this value normalized per 1000 atoms of the molecule in the chain. The Symm-Clashes column gives symmetry related clashes, in the same way as for the Clashes column.

Mol	Chain	Non-H	H(model)	H(added)	Clashes	Symm-Clashes
1	A	3223	0	3213	98	0
1	B	3223	0	3213	101	0
2	A	48	0	32	9	0
2	B	48	0	32	8	0
3	A	12	0	12	0	0
3	B	12	0	12	0	0
4	A	74	0	0	6	0
4	B	105	0	0	14	0
All	All	6745	0	6514	210	0

Clashscore is defined as the number of clashes calculated for the entry per 1000 atoms (including hydrogens) of the entry. The overall clashscore for this entry is 16.

All (210) close contacts within the same asymmetric unit are listed below.

Atom-1	Atom-2	Distance(Å)	Clash(Å)
1:A:407:ALA:HB1	1:A:411:GLU:OE2	1.27	1.26
1:B:84:LEU:HB2	4:B:482:HOH:O	1.38	1.22
1:B:119:ARG:HG2	1:B:119:ARG:HH11	0.97	1.09
1:A:119:ARG:HH11	1:A:119:ARG:HG2	1.10	1.09
1:A:68:ASP:OD1	1:A:85:ARG:NH1	1.88	1.04
1:A:219:ALA:O	1:A:220:GLU:HB3	1.59	1.02
1:B:21:MET:O	1:B:24:THR:HB	1.63	0.99
1:B:119:ARG:NH1	1:B:119:ARG:HG2	1.73	0.95
1:A:119:ARG:NH1	1:A:119:ARG:HG2	1.76	0.93
1:A:101:THR:HB	4:B:513:HOH:O	1.68	0.93
1:B:316:ARG:HG2	1:B:317:SER:H	1.36	0.91
1:B:219:ALA:O	1:B:220:GLU:HB2	1.72	0.89
1:A:407:ALA:CB	1:A:411:GLU:OE2	2.20	0.89
2:A:437:COA:H131	2:A:437:COA:HN8	1.39	0.88
1:B:68:ASP:OD1	1:B:85:ARG:NH1	2.07	0.87
1:B:354:ILE:HD12	1:B:376:ILE:HG12	1.59	0.85
1:A:259:LEU:HD21	1:A:270:GLU:HG2	1.61	0.83
1:A:318:ARG:O	1:A:319:GLU:OE1	1.97	0.82
1:B:316:ARG:HG2	1:B:317:SER:N	1.93	0.82
1:A:314:LEU:HD13	1:A:315:HIS:H	1.45	0.81
1:A:119:ARG:HH11	1:A:119:ARG:CG	1.92	0.81
2:B:437:COA:HN8	2:B:437:COA:H131	1.45	0.81
1:B:219:ALA:O	1:B:220:GLU:CB	2.29	0.79
1:A:407:ALA:HB2	4:A:439:HOH:O	1.80	0.79
1:B:307:LEU:HD21	2:B:437:COA:H61	1.65	0.78
1:B:407:ALA:HB2	1:B:431:VAL:HG23	1.64	0.78
1:A:12:ARG:HG3	1:A:12:ARG:HH11	1.49	0.78
1:B:84:LEU:HD13	4:B:482:HOH:O	1.86	0.76
1:A:412:LEU:HD21	1:A:429:ILE:HD13	1.67	0.75
1:A:341:ALA:HB1	1:A:354:ILE:HD11	1.68	0.75
1:B:254:HIS:HB3	4:B:464:HOH:O	1.87	0.75
1:B:380:ALA:O	1:B:384:GLY:O	2.06	0.74
2:B:437:COA:O6A	2:B:437:COA:OAP	1.97	0.73
1:A:316:ARG:HG2	1:A:317:SER:H	1.54	0.72
1:B:307:LEU:HD22	1:B:312:ILE:HG21	1.71	0.72
1:B:270:GLU:OE2	1:B:277:ILE:O	2.08	0.71
1:A:286:PHE:O	1:A:287:VAL:HB	1.90	0.71
1:B:318:ARG:O	1:B:319:GLU:CD	2.30	0.70
1:A:314:LEU:CD1	1:A:315:HIS:H	2.04	0.70
1:B:407:ALA:HB2	1:B:431:VAL:CG2	2.23	0.69
1:A:403:GLY:O	1:A:432:ARG:HG3	1.92	0.69
1:B:82:ARG:CZ	4:B:469:HOH:O	2.40	0.69
1:B:197:LEU:C	1:B:197:LEU:HD23	2.14	0.68

Continued on next page...

Continued from previous page...

Atom-1	Atom-2	Distance(Å)	Clash(Å)
1:B:290:ARG:CZ	1:B:330:ILE:HD11	2.23	0.68
1:A:219:ALA:O	1:A:220:GLU:CB	2.37	0.68
1:B:320:TYR:OH	1:B:327:GLU:OE2	2.08	0.67
1:A:153:THR:HG21	4:A:440:HOH:O	1.94	0.66
1:B:290:ARG:NH1	1:B:332:GLU:OE1	2.27	0.66
1:B:215:ASP:HB2	4:B:446:HOH:O	1.94	0.66
1:B:318:ARG:HE	1:B:319:GLU:N	1.93	0.65
1:B:318:ARG:O	1:B:319:GLU:OE1	2.14	0.65
1:A:103:ARG:HH21	1:A:127:SER:HB2	1.61	0.65
1:A:197:LEU:C	1:A:197:LEU:HD23	2.17	0.64
1:A:275:ASN:O	4:A:449:HOH:O	2.15	0.64
2:A:437:COA:O5P	2:A:437:COA:C2P	2.46	0.63
1:B:209:ASP:O	1:B:278:GLY:HA2	1.99	0.63
1:A:297:ILE:HG23	1:A:321:LEU:HD13	1.81	0.63
1:A:31:ASP:OD2	1:A:33:ARG:HD3	1.99	0.63
1:A:316:ARG:HG2	1:A:317:SER:N	2.13	0.63
1:A:193:VAL:O	1:A:197:LEU:HD22	1.99	0.63
1:A:314:LEU:HD13	1:A:315:HIS:N	2.13	0.62
1:B:42:LYS:NZ	1:B:264:ASP:HB3	2.15	0.62
1:A:357:LEU:O	2:A:437:COA:H21	1.99	0.62
1:B:316:ARG:CG	1:B:317:SER:H	2.09	0.61
1:B:84:LEU:CD1	4:B:482:HOH:O	2.47	0.61
1:A:286:PHE:O	1:A:287:VAL:CB	2.49	0.61
1:A:33:ARG:NH2	1:A:207:LEU:HD22	2.15	0.60
1:A:70:LEU:O	1:A:74:GLN:HG2	2.02	0.60
1:A:21:MET:O	1:A:24:THR:HB	2.02	0.60
1:A:26:LEU:HD23	1:A:26:LEU:C	2.21	0.60
1:A:270:GLU:HA	1:A:270:GLU:OE2	2.01	0.60
1:A:80:TYR:CE2	1:A:85:ARG:HB2	2.36	0.59
1:B:16:PRO:O	1:B:20:GLN:HG3	2.02	0.59
1:A:307:LEU:O	1:A:312:ILE:HD12	2.03	0.58
1:B:370:GLU:OE2	1:B:402:ARG:HD2	2.03	0.58
1:A:33:ARG:HD2	1:A:65:HIS:CG	2.38	0.58
1:B:354:ILE:HD12	1:B:376:ILE:CG1	2.33	0.58
1:B:384:GLY:O	1:B:385:ILE:HB	2.05	0.57
1:B:287:VAL:HA	1:B:332:GLU:O	2.04	0.57
1:A:315:HIS:ND1	1:A:315:HIS:N	2.51	0.57
1:B:398:TRP:CD1	1:B:402:ARG:NH2	2.72	0.57
1:A:387:ARG:HD2	1:A:433:ARG:HH11	1.67	0.57
1:B:277:ILE:HD12	1:B:277:ILE:H	1.68	0.57
1:B:307:LEU:HB3	1:B:312:ILE:HB	1.86	0.57
1:A:320:TYR:CD2	1:A:320:TYR:C	2.79	0.56

Continued on next page...

Continued from previous page...

Atom-1	Atom-2	Distance(Å)	Clash(Å)
1:A:319:GLU:HB2	1:A:322:GLU:HG2	1.86	0.56
1:A:12:ARG:HG3	1:A:12:ARG:NH1	2.17	0.56
1:A:254:HIS:HB3	4:A:498:HOH:O	2.05	0.56
1:B:307:LEU:HD22	1:B:312:ILE:CG2	2.35	0.56
1:B:197:LEU:H	1:B:197:LEU:HD22	1.71	0.56
2:A:437:COA:CDP	2:A:437:COA:HN8	2.16	0.55
1:A:389:PHE:CD1	1:A:431:VAL:CG2	2.90	0.55
1:B:316:ARG:CG	1:B:317:SER:N	2.68	0.55
1:B:87:THR:HG23	1:B:91:SER:HB3	1.89	0.55
2:B:437:COA:O5P	2:B:437:COA:C2P	2.55	0.54
1:A:15:ALA:HA	1:A:18:ILE:HD12	1.90	0.54
1:B:290:ARG:NH2	1:B:296:ASP:OD2	2.41	0.54
1:A:353:GLU:OE1	1:A:416:ARG:HD3	2.08	0.54
1:A:60:ILE:HD11	1:A:170:MET:HE1	1.90	0.54
2:A:437:COA:OAP	2:A:437:COA:O6A	2.20	0.53
1:A:270:GLU:OE2	1:A:277:ILE:O	2.27	0.53
1:A:213:ARG:HB3	1:A:215:ASP:OD2	2.08	0.53
1:B:19:ARG:CG	1:B:19:ARG:HH11	2.21	0.53
1:A:103:ARG:NH2	1:A:127:SER:HB2	2.23	0.52
1:A:197:LEU:H	1:A:197:LEU:HD22	1.74	0.52
1:A:17:TYR:O	1:A:21:MET:HG2	2.09	0.52
1:B:119:ARG:CG	1:B:119:ARG:NH1	2.57	0.52
1:A:317:SER:O	1:A:318:ARG:HG3	2.09	0.52
1:A:58:VAL:CG1	1:A:170:MET:CE	2.88	0.52
2:A:437:COA:H21	2:A:437:COA:O5P	2.08	0.52
1:B:305:ARG:CB	1:B:306:PRO:CD	2.88	0.52
1:B:395:THR:O	1:B:395:THR:HG22	2.09	0.52
1:B:319:GLU:HB2	1:B:322:GLU:H	1.74	0.51
1:B:266:SER:O	1:B:277:ILE:HD11	2.11	0.50
1:A:389:PHE:CD1	1:A:431:VAL:HG22	2.46	0.50
1:B:364:GLN:NE2	2:B:437:COA:O9P	2.45	0.50
1:A:350:ASP:HA	1:A:385:ILE:HA	1.94	0.50
1:A:412:LEU:HD21	1:A:429:ILE:CD1	2.39	0.50
1:A:115:SER:OG	1:A:116:GLY:N	2.44	0.50
1:B:19:ARG:HH11	1:B:19:ARG:HG3	1.77	0.49
1:B:427:SER:N	4:B:539:HOH:O	2.30	0.49
1:A:30:ILE:HG12	1:A:205:LEU:HD12	1.95	0.49
1:B:402:ARG:HG3	4:B:480:HOH:O	2.13	0.49
1:A:35:LEU:HD13	1:A:102:VAL:CG1	2.43	0.49
2:B:437:COA:CDP	2:B:437:COA:HN8	2.22	0.49
1:B:236:SER:O	1:B:240:ARG:HG3	2.12	0.49
1:A:307:LEU:HD22	2:A:437:COA:H61	1.94	0.48

Continued on next page...

Continued from previous page...

Atom-1	Atom-2	Distance(Å)	Clash(Å)
1:B:312:ILE:HG23	4:B:542:HOH:O	2.12	0.48
1:B:31:ASP:OD1	1:B:33:ARG:NH1	2.47	0.48
1:A:15:ALA:HB3	1:A:16:PRO:HD3	1.95	0.48
1:B:393:THR:HB	1:B:427:SER:OG	2.13	0.48
1:B:42:LYS:HZ3	1:B:264:ASP:HB3	1.79	0.47
1:B:305:ARG:CB	1:B:306:PRO:HD3	2.45	0.47
1:B:33:ARG:HD2	1:B:65:HIS:CB	2.44	0.47
1:B:394:ASN:HD22	1:B:395:THR:N	2.12	0.47
1:A:33:ARG:CZ	1:A:207:LEU:HD22	2.45	0.47
1:A:386:SER:C	1:A:434:LEU:HB2	2.35	0.47
1:A:58:VAL:CG1	1:A:170:MET:HE2	2.45	0.47
1:B:406:THR:HA	1:B:430:LEU:HD23	1.97	0.46
1:B:42:LYS:HZ1	1:B:264:ASP:HB3	1.78	0.46
1:A:35:LEU:HD13	1:A:102:VAL:HG11	1.98	0.46
1:A:365:ASP:OD2	2:A:437:COA:H3B	2.15	0.46
1:B:407:ALA:CB	1:B:431:VAL:CG2	2.93	0.46
1:B:427:SER:HB2	4:B:539:HOH:O	2.16	0.46
1:B:82:ARG:NE	4:B:469:HOH:O	2.46	0.46
1:B:318:ARG:HH21	1:B:319:GLU:HA	1.80	0.46
1:A:389:PHE:CD1	1:A:431:VAL:HG21	2.50	0.46
1:B:317:SER:O	1:B:318:ARG:O	2.32	0.46
2:A:437:COA:H131	2:A:437:COA:N8P	2.20	0.46
1:B:305:ARG:HB2	1:B:306:PRO:CD	2.45	0.45
1:B:30:ILE:HG12	1:B:205:LEU:HD12	1.98	0.45
1:B:236:SER:HA	1:B:239:ARG:HB3	1.99	0.45
1:A:249:LEU:HD21	1:A:256:VAL:HG12	1.99	0.45
1:B:318:ARG:HE	1:B:319:GLU:CA	2.29	0.45
1:A:332:GLU:HA	1:A:336:ASN:O	2.17	0.45
1:B:124:PRO:HB2	1:B:166:ASN:ND2	2.32	0.45
1:B:211:ILE:CD1	1:B:258:ILE:HG13	2.47	0.45
1:A:318:ARG:O	1:A:319:GLU:CD	2.54	0.44
1:A:60:ILE:HG12	1:A:170:MET:HB2	2.00	0.44
1:B:290:ARG:HH22	1:B:296:ASP:CG	2.21	0.44
1:A:263:ALA:HB3	1:A:266:SER:OG	2.18	0.44
1:B:429:ILE:C	1:B:429:ILE:HD12	2.37	0.44
1:B:124:PRO:HB2	1:B:166:ASN:HD22	1.83	0.44
1:A:303:LEU:HB3	1:A:304:ILE:HD12	1.99	0.44
1:A:220:GLU:HA	1:A:278:GLY:O	2.18	0.43
1:A:49:LEU:HD23	1:A:49:LEU:HA	1.84	0.43
1:A:407:ALA:CB	4:A:439:HOH:O	2.52	0.43
2:B:437:COA:O5P	2:B:437:COA:N8P	2.51	0.43
1:B:155:THR:HG22	1:B:159:ARG:NH1	2.33	0.43

Continued on next page...

Continued from previous page...

Atom-1	Atom-2	Distance(Å)	Clash(Å)
1:B:286:PHE:O	1:B:287:VAL:CB	2.66	0.43
1:B:211:ILE:HD12	1:B:258:ILE:HG13	2.01	0.43
1:B:17:TYR:O	1:B:21:MET:HG2	2.18	0.43
1:B:286:PHE:O	1:B:287:VAL:HB	2.18	0.43
1:B:416:ARG:HA	1:B:416:ARG:HD2	1.78	0.43
1:B:376:ILE:C	1:B:376:ILE:HD12	2.39	0.43
1:A:126:VAL:HG11	1:A:161:GLN:NE2	2.34	0.43
1:A:277:ILE:O	1:A:277:ILE:HD12	2.19	0.42
2:B:437:COA:O5P	2:B:437:COA:H21	2.19	0.42
1:A:26:LEU:C	1:A:26:LEU:CD2	2.86	0.42
1:A:50:LEU:HD11	1:A:267:LEU:HD13	2.01	0.42
1:A:56:ARG:HB3	1:A:162:LEU:HD22	2.01	0.42
1:A:394:ASN:HD22	1:A:395:THR:N	2.16	0.42
1:A:410:ASP:HA	4:A:443:HOH:O	2.18	0.42
1:B:213:ARG:O	1:B:215:ASP:N	2.52	0.42
1:B:305:ARG:HB2	1:B:306:PRO:HD3	2.01	0.42
1:A:180:LYS:HA	1:A:180:LYS:HD3	1.88	0.42
1:A:420:TYR:O	1:A:426:ASN:OD1	2.38	0.42
1:B:426:ASN:HB2	4:B:455:HOH:O	2.19	0.42
1:B:200:GLU:O	1:B:254:HIS:HB2	2.20	0.42
1:A:324:HIS:O	1:A:327:GLU:HG2	2.20	0.42
1:B:213:ARG:C	1:B:215:ASP:H	2.22	0.42
1:B:384:GLY:O	1:B:385:ILE:CB	2.66	0.42
1:B:213:ARG:HB3	1:B:214:PRO:HD2	2.00	0.41
1:B:197:LEU:N	1:B:197:LEU:HD22	2.33	0.41
1:A:231:ALA:HB1	1:A:239:ARG:NH1	2.34	0.41
1:A:77:THR:HA	1:A:78:PRO:HD2	1.88	0.41
1:A:104:SER:OG	1:B:96:GLN:HG2	2.19	0.41
1:B:418:LYS:HD2	1:B:418:LYS:HA	1.87	0.41
1:B:412:LEU:HD23	1:B:412:LEU:HA	1.91	0.41
1:A:386:SER:O	1:A:434:LEU:N	2.52	0.41
1:B:373:LEU:O	1:B:377:ILE:HG23	2.20	0.41
1:A:418:LYS:O	1:A:421:ARG:HG2	2.20	0.41
1:A:299:HIS:CB	1:A:337:LEU:HD12	2.51	0.41
1:A:286:PHE:HD2	1:A:334:ASP:HB2	1.86	0.41
1:B:427:SER:HB3	1:B:428:HIS:H	1.65	0.41
1:A:419:ASP:C	1:A:421:ARG:H	2.24	0.41
1:B:333:HIS:HE1	4:B:448:HOH:O	2.03	0.41
1:B:337:LEU:N	1:B:337:LEU:HD23	2.36	0.41
1:B:290:ARG:NH2	1:B:330:ILE:HD11	2.36	0.40
1:A:386:SER:HA	1:A:434:LEU:HB2	2.02	0.40

There are no symmetry-related clashes.

5.3 Torsion angles

5.3.1 Protein backbone ⓘ

In the following table, the Percentiles column shows the percent Ramachandran outliers of the chain as a percentile score with respect to all X-ray entries followed by that with respect to entries of similar resolution. The Analysed column shows the number of residues for which the backbone conformation was analysed, and the total number of residues.

Mol	Chain	Analysed	Favoured	Allowed	Outliers	Percentiles	
1	A	418/456 (92%)	383 (92%)	27 (6%)	8 (2%)	12	21
1	B	418/456 (92%)	395 (94%)	13 (3%)	10 (2%)	9	14
All	All	836/912 (92%)	778 (93%)	40 (5%)	18 (2%)	10	17

All (18) Ramachandran outliers are listed below:

Mol	Chain	Res	Type
1	A	220	GLU
1	B	219	ALA
1	B	220	GLU
1	B	318	ARG
1	A	318	ARG
1	A	420	TYR
1	B	306	PRO
1	B	314	LEU
1	A	411	GLU
1	B	63	ALA
1	B	385	ILE
1	A	287	VAL
1	B	214	PRO
1	B	287	VAL
1	B	414	GLU
1	A	410	ASP
1	A	214	PRO
1	A	295	GLY

5.3.2 Protein sidechains ⓘ

In the following table, the Percentiles column shows the percent sidechain outliers of the chain as a percentile score with respect to all X-ray entries followed by that with respect to entries of similar resolution. The Analysed column shows the number of residues for which the sidechain conformation was analysed, and the total number of residues.

Mol	Chain	Analysed	Rotameric	Outliers	Percentiles	
1	A	329/355 (93%)	294 (89%)	35 (11%)	10	16
1	B	329/355 (93%)	278 (84%)	51 (16%)	4	6
All	All	658/710 (93%)	572 (87%)	86 (13%)	6	10

All (86) residues with a non-rotameric sidechain are listed below:

Mol	Chain	Res	Type
1	A	19	ARG
1	A	40	LEU
1	A	49	LEU
1	A	70	LEU
1	A	81	CYS
1	A	101	THR
1	A	119	ARG
1	A	132	THR
1	A	153	THR
1	A	197	LEU
1	A	225	GLN
1	A	238	THR
1	A	250	GLU
1	A	256	VAL
1	A	264	ASP
1	A	290	ARG
1	A	303	LEU
1	A	305	ARG
1	A	313	LEU
1	A	315	HIS
1	A	316	ARG
1	A	317	SER
1	A	318	ARG
1	A	320	TYR
1	A	321	LEU
1	A	330	ILE
1	A	383	ILE
1	A	388	LEU
1	A	394	ASN
1	A	395	THR
1	A	402	ARG
1	A	411	GLU
1	A	414	GLU
1	A	421	ARG
1	A	429	ILE

Continued on next page...

Continued from previous page...

Mol	Chain	Res	Type
1	B	19	ARG
1	B	24	THR
1	B	33	ARG
1	B	40	LEU
1	B	42	LYS
1	B	70	LEU
1	B	76	ARG
1	B	84	LEU
1	B	85	ARG
1	B	101	THR
1	B	114	VAL
1	B	119	ARG
1	B	126	VAL
1	B	132	THR
1	B	149	VAL
1	B	153	THR
1	B	197	LEU
1	B	215	ASP
1	B	238	THR
1	B	244	SER
1	B	250	GLU
1	B	254	HIS
1	B	256	VAL
1	B	259	LEU
1	B	264	ASP
1	B	266	SER
1	B	268	LEU
1	B	277	ILE
1	B	290	ARG
1	B	291	GLN
1	B	304	ILE
1	B	312	ILE
1	B	313	LEU
1	B	316	ARG
1	B	317	SER
1	B	318	ARG
1	B	321	LEU
1	B	330	ILE
1	B	337	LEU
1	B	370	GLU
1	B	377	ILE
1	B	381	ARG

Continued on next page...

Continued from previous page...

Mol	Chain	Res	Type
1	B	386	SER
1	B	394	ASN
1	B	397	GLU
1	B	406	THR
1	B	414	GLU
1	B	421	ARG
1	B	429	ILE
1	B	431	VAL
1	B	436	ARG

Some sidechains can be flipped to improve hydrogen bonding and reduce clashes. All (16) such sidechains are listed below:

Mol	Chain	Res	Type
1	A	74	GLN
1	A	94	GLN
1	A	161	GLN
1	A	166	ASN
1	A	225	GLN
1	A	364	GLN
1	A	394	ASN
1	B	74	GLN
1	B	94	GLN
1	B	161	GLN
1	B	166	ASN
1	B	275	ASN
1	B	333	HIS
1	B	364	GLN
1	B	394	ASN
1	B	426	ASN

5.3.3 RNA ⓘ

There are no RNA chains in this entry.

5.4 Non-standard residues in protein, DNA, RNA chains ⓘ

There are no non-standard protein/DNA/RNA residues in this entry.

5.5 Carbohydrates

There are no carbohydrates in this entry.

5.6 Ligand geometry

4 ligands are modelled in this entry.

In the following table, the Counts columns list the number of bonds (or angles) for which Mogul statistics could be retrieved, the number of bonds (or angles) that are observed in the model and the number of bonds (or angles) that are defined in the chemical component dictionary. The Link column lists molecule types, if any, to which the group is linked. The Z score for a bond length (or angle) is the number of standard deviations the observed value is removed from the expected value. A bond length (or angle) with $|Z| > 2$ is considered an outlier worth inspection. RMSZ is the root-mean-square of all Z scores of the bond lengths (or angles).

Mol	Type	Chain	Res	Link	Bond lengths			Bond angles		
					Counts	RMSZ	$\# Z > 2$	Counts	RMSZ	$\# Z > 2$
2	COA	A	437	-	50,50,50	1.71	11 (22%)	75,75,75	2.03	19 (25%)
3	ARG	A	438	-	11,11,11	0.79	1 (9%)	13,13,13	1.30	2 (15%)
2	COA	B	437	-	50,50,50	1.65	8 (16%)	75,75,75	2.12	21 (28%)
3	ARG	B	438	-	11,11,11	0.63	0	13,13,13	0.89	0

In the following table, the Chirals column lists the number of chiral outliers, the number of chiral centers analysed, the number of these observed in the model and the number defined in the chemical component dictionary. Similar counts are reported in the Torsion and Rings columns. '-' means no outliers of that kind were identified.

Mol	Type	Chain	Res	Link	Chirals	Torsions	Rings
2	COA	A	437	-	1/1/11/13	1/48/64/64	0/1/3/3
3	ARG	A	438	-	-	0/11/11/11	0/0/0/0
2	COA	B	437	-	1/1/11/13	2/48/64/64	0/1/3/3
3	ARG	B	438	-	-	0/11/11/11	0/0/0/0

All (20) bond length outliers are listed below:

Mol	Chain	Res	Type	Atoms	Z	Observed(Å)	Ideal(Å)
2	A	437	COA	P3B-O7A	5.06	1.68	1.51
2	A	437	COA	C3P-N4P	-4.81	1.34	1.46
2	B	437	COA	C3P-N4P	-4.45	1.35	1.46
2	B	437	COA	P3B-O7A	4.44	1.66	1.51
2	B	437	COA	O4B-C1B	4.39	1.48	1.41
2	B	437	COA	P3B-O8A	4.17	1.70	1.54

Continued on next page...

Continued from previous page...

Mol	Chain	Res	Type	Atoms	Z	Observed(Å)	Ideal(Å)
2	A	437	COA	P3B-O8A	3.82	1.68	1.54
2	A	437	COA	P2A-O3A	3.13	1.65	1.59
2	A	437	COA	O4B-C1B	3.06	1.46	1.41
2	A	437	COA	CBP-CAP	-3.05	1.52	1.55
2	B	437	COA	C4A-N9A	-2.83	1.33	1.37
2	A	437	COA	P1A-O3A	2.57	1.64	1.59
2	A	437	COA	C5B-C4B	2.31	1.59	1.51
2	B	437	COA	P2A-O3A	-2.24	1.55	1.59
2	A	437	COA	C4A-N9A	-2.22	1.34	1.37
2	B	437	COA	C8A-N9A	-2.20	1.33	1.36
2	A	437	COA	CCP-CBP	2.11	1.56	1.52
2	B	437	COA	C9P-N8P	2.07	1.38	1.33
3	A	438	ARG	OXT-C	-2.05	1.22	1.30
2	A	437	COA	C2P-C3P	-2.04	1.42	1.51

All (42) bond angle outliers are listed below:

Mol	Chain	Res	Type	Atoms	Z	Observed(°)	Ideal(°)
2	A	437	COA	N3A-C2A-N1A	-8.76	121.39	128.71
2	B	437	COA	N3A-C2A-N1A	-7.76	122.22	128.71
2	B	437	COA	O4B-C1B-N9A	5.08	113.16	108.44
2	B	437	COA	CCP-CBP-CAP	-5.07	101.29	108.70
2	B	437	COA	CBP-CAP-C9P	4.28	116.88	112.73
2	A	437	COA	CCP-CBP-CAP	-4.22	102.53	108.70
2	B	437	COA	C2P-C3P-N4P	4.20	121.86	112.45
2	A	437	COA	C4B-O4B-C1B	-3.99	105.41	109.75
2	A	437	COA	N3A-C4A-N9A	3.94	132.55	125.43
2	B	437	COA	N3A-C4A-N9A	3.92	132.51	125.43
2	A	437	COA	P2A-O3A-P1A	-3.90	120.25	131.68
2	A	437	COA	CBP-CAP-C9P	3.63	116.25	112.73
2	B	437	COA	O9P-C9P-CAP	-3.63	113.87	120.48
2	A	437	COA	CEP-CBP-CCP	3.63	113.98	108.76
2	A	437	COA	C7P-N8P-C9P	-3.60	115.18	122.57
2	B	437	COA	C4A-C5A-N7A	-3.53	106.50	109.52
2	B	437	COA	P2A-O3A-P1A	-3.51	121.39	131.68
2	B	437	COA	C4B-O4B-C1B	-3.44	106.02	109.75
3	A	438	ARG	OXT-C-O	-3.16	116.92	124.07
2	B	437	COA	CEP-CBP-CCP	3.08	113.19	108.76
3	A	438	ARG	OXT-C-CA	2.90	123.40	116.88
2	B	437	COA	C7P-N8P-C9P	-2.86	116.69	122.57
2	A	437	COA	C2P-C3P-N4P	2.79	118.70	112.45
2	A	437	COA	CDP-CBP-CAP	2.69	113.49	108.82

Continued on next page...

Continued from previous page...

Mol	Chain	Res	Type	Atoms	Z	Observed(°)	Ideal(°)
2	B	437	COA	O8A-P3B-O7A	-2.68	101.69	110.44
2	B	437	COA	C5A-C4A-N3A	-2.65	119.94	125.70
2	B	437	COA	C8A-N9A-C4A	2.64	108.92	106.90
2	A	437	COA	C5A-C4A-N3A	-2.60	120.05	125.70
2	B	437	COA	C6P-C7P-N8P	2.48	117.22	111.87
2	B	437	COA	P3B-O3B-C3B	-2.37	116.97	121.96
2	A	437	COA	O9P-C9P-CAP	-2.35	116.20	120.48
2	B	437	COA	O9A-P3B-O8A	2.34	116.73	107.61
2	A	437	COA	C2A-N3A-C4A	2.33	120.64	114.01
2	A	437	COA	C1B-N9A-C4A	-2.25	122.75	126.64
2	A	437	COA	O8A-P3B-O3B	-2.23	100.68	107.09
2	A	437	COA	O5P-C5P-C6P	-2.09	117.76	121.92
2	B	437	COA	C2A-N3A-C4A	2.09	119.96	114.01
2	B	437	COA	CDP-CBP-CAP	2.09	112.44	108.82
2	B	437	COA	N7A-C8A-N9A	-2.08	108.48	114.36
2	A	437	COA	O5P-C5P-N4P	2.03	126.96	122.94
2	A	437	COA	OAP-CAP-C9P	-2.03	105.53	110.76
2	A	437	COA	C3P-C2P-S1P	2.02	118.81	113.50

All (2) chirality outliers are listed below:

Mol	Chain	Res	Type	Atom
2	B	437	COA	CAP
2	A	437	COA	CAP

All (3) torsion outliers are listed below:

Mol	Chain	Res	Type	Atoms
2	B	437	COA	C2P-C3P-N4P-C5P
2	A	437	COA	C2P-C3P-N4P-C5P
2	B	437	COA	O9P-C9P-CAP-CBP

There are no ring outliers.

5.7 Other polymers ⓘ

There are no such residues in this entry.

5.8 Polymer linkage issues

There are no chain breaks in this entry.

6 Fit of model and data ⓘ

6.1 Protein, DNA and RNA chains ⓘ

In the following table, the column labelled ‘#RSRZ> 2’ contains the number (and percentage) of RSRZ outliers, followed by percent RSRZ outliers for the chain as percentile scores relative to all X-ray entries and entries of similar resolution. The OWAB column contains the minimum, median, 95th percentile and maximum values of the occupancy-weighted average B-factor per residue. The column labelled ‘Q< 0.9’ lists the number of (and percentage) of residues with an average occupancy less than 0.9.

Mol	Chain	Analysed	<RSRZ>	#RSRZ>2	OWAB(Å ²)	Q<0.9
1	A	424/456 (92%)	0.18	29 (6%) 17 16	21, 29, 35, 42	0
1	B	424/456 (92%)	-0.11	13 (3%) 47 46	19, 28, 35, 41	0
All	All	848/912 (92%)	0.03	42 (4%) 28 26	19, 29, 35, 42	0

All (42) RSRZ outliers are listed below:

Mol	Chain	Res	Type	RSRZ
1	A	346	PHE	5.8
1	A	410	ASP	5.0
1	A	351	CYS	4.8
1	A	389	PHE	3.9
1	A	436	ARG	3.9
1	B	303	LEU	3.9
1	B	436	ARG	3.9
1	A	412	LEU	3.7
1	B	312	ILE	3.7
1	B	302	ALA	3.6
1	B	316	ARG	3.4
1	A	434	LEU	3.3
1	B	318	ARG	3.2
1	A	409	GLU	3.0
1	A	435	HIS	3.0
1	A	390	ALA	2.9
1	A	214	PRO	2.8
1	A	405	GLN	2.8
1	B	79	HIS	2.7
1	A	388	LEU	2.7
1	B	435	HIS	2.7
1	A	317	SER	2.7
1	A	383	ILE	2.6
1	A	352	GLY	2.5

Continued on next page...

Continued from previous page...

Mol	Chain	Res	Type	RSRZ
1	A	320	TYR	2.5
1	A	393	THR	2.5
1	B	84	LEU	2.4
1	B	307	LEU	2.4
1	B	313	LEU	2.4
1	A	399	PHE	2.3
1	A	354	ILE	2.2
1	A	398	TRP	2.2
1	B	239	ARG	2.2
1	A	345	THR	2.2
1	A	387	ARG	2.1
1	A	233	HIS	2.1
1	B	304	ILE	2.1
1	A	414	GLU	2.1
1	A	313	LEU	2.1
1	A	413	PRO	2.0
1	A	421	ARG	2.0
1	A	75	GLY	2.0

6.2 Non-standard residues in protein, DNA, RNA chains ⓘ

There are no non-standard protein/DNA/RNA residues in this entry.

6.3 Carbohydrates ⓘ

There are no carbohydrates in this entry.

6.4 Ligands ⓘ

In the following table, the Atoms column lists the number of modelled atoms in the group and the number defined in the chemical component dictionary. LLDF column lists the quality of electron density of the group with respect to its neighbouring residues in protein, DNA or RNA chains. The B-factors column lists the minimum, median, 95th percentile and maximum values of B factors of atoms in the group. The column labelled 'Q < 0.9' lists the number of atoms with occupancy less than 0.9.

Mol	Type	Chain	Res	Atoms	RSR	LLDF	B-factors(Å ²)	Q<0.9
2	COA	B	437	48/48	0.23	0.83	34,42,47,58	0
2	COA	A	437	48/48	0.21	0.34	34,42,47,57	0
3	ARG	A	438	12/12	0.11	-1.08	28,32,33,33	0
3	ARG	B	438	12/12	0.10	-1.52	26,32,34,35	0

6.5 Other polymers ⓘ

There are no such residues in this entry.