



Full wwPDB X-ray Structure Validation Report i

Feb 27, 2014 – 02:50 PM GMT

PDB ID : 2D3B
Title : Crystal Structure of the Maize Glutamine Synthetase complexed with
AMPPNP and Methionine sulfoximine
Authors : Unno, H.; Uchida, T.; Sugawara, H.; Kurisu, G.; Sugiyama, T.; Yamaya, T.;
Sakakibara, H.; Hase, T.; Kusunoki, M.
Deposited on : 2005-09-26
Resolution : 3.50 Å(reported)

This is a full wwPDB validation report for a publicly released PDB entry.
We welcome your comments at validation@mail.wwpdb.org
A user guide is available at <http://wwpdb.org/ValidationPDFNotes.html>

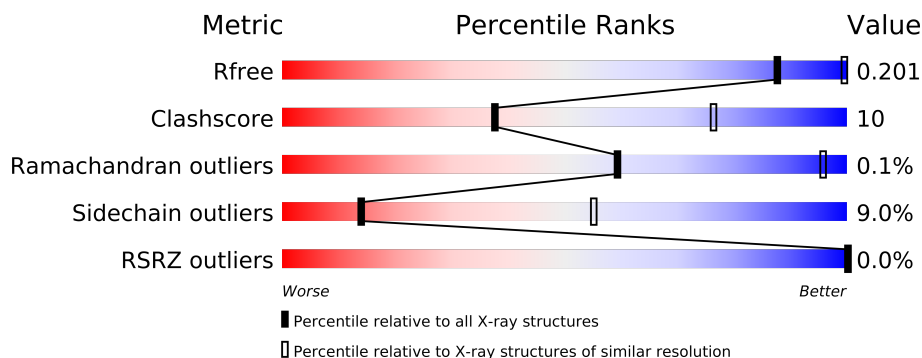
The following versions of software and data (see [references](#)) were used in the production of this report:

MolProbity	:	4.02b-467
Mogul	:	1.15 2013
Xtriage (Phenix)	:	dev-1323
EDS	:	stable22639
Percentile statistics	:	21963
Refmac	:	5.8.0049
CCP4	:	6.3.0 (Settle)
Ideal geometry (proteins)	:	Engh & Huber (2001)
Ideal geometry (DNA, RNA)	:	Parkinson et. al. (1996)
Validation Pipeline (wwPDB-VP)	:	stable22683

1 Overall quality at a glance

The reported resolution of this entry is 3.50 Å.

Percentile scores (ranging between 0-100) for global validation metrics of the entry are shown in the following graphic. The table shows the number of entries on which the scores are based.



Metric	Whole archive (#Entries)	Similar resolution (#Entries, resolution range(Å))
R_{free}	66092	1243 (3.70-3.30)
Clashscore	79885	1039 (3.66-3.34)
Ramachandran outliers	78287	1000 (3.66-3.34)
Sidechain outliers	78261	1000 (3.66-3.34)
RSRZ outliers	66119	1243 (3.70-3.30)

The table below summarises the geometric issues observed across the polymeric chains and their fit to the electron density. The red, orange, yellow and green segments on the lower bar indicate the fraction of residues that contain outliers for ≥ 3 , 2, 1 and 0 types of geometric quality criteria. The upper red bar (where present) indicates the fraction of residues that have poor fit to the electron density.

Mol	Chain	Length	Quality of chain
1	A	356	
1	B	356	
1	C	356	
1	D	356	
1	E	356	
1	F	356	
1	G	356	
1	H	356	
1	I	356	
1	J	356	

2 Entry composition

There are 5 unique types of molecules in this entry. The entry contains 28277 atoms, of which 0 are hydrogen and 0 are deuterium.

In the tables below, the ZeroOcc column contains the number of atoms modelled with zero occupancy, the AltConf column contains the number of residues with at least one atom in alternate conformation and the Trace column contains the number of residues modelled with at most 2 atoms.

- Molecule 1 is a protein called glutamine synthetase.

Mol	Chain	Residues	Atoms					ZeroOcc	AltConf	Trace
1	A	353	Total	C	N	O	S	0	0	0
			2745	1739	470	525	11			
1	B	353	Total	C	N	O	S	0	0	0
			2745	1739	470	525	11			
1	C	353	Total	C	N	O	S	0	0	0
			2745	1739	470	525	11			
1	D	353	Total	C	N	O	S	0	0	0
			2745	1739	470	525	11			
1	E	353	Total	C	N	O	S	0	0	0
			2745	1739	470	525	11			
1	F	353	Total	C	N	O	S	0	0	0
			2745	1739	470	525	11			
1	G	353	Total	C	N	O	S	0	0	0
			2745	1739	470	525	11			
1	H	353	Total	C	N	O	S	0	0	0
			2745	1739	470	525	11			
1	I	353	Total	C	N	O	S	0	0	0
			2745	1739	470	525	11			
1	J	353	Total	C	N	O	S	0	0	0
			2745	1739	470	525	11			

- Molecule 2 is MANGANESE (II) ION (three-letter code: MN) (formula: Mn).

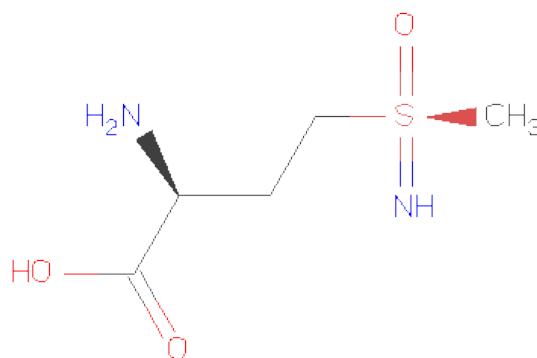
Mol	Chain	Residues	Atoms		ZeroOcc	AltConf
2	G	3	Total	Mn	0	0
			3	3		
2	J	3	Total	Mn	0	0
			3	3		
2	D	3	Total	Mn	0	0
			3	3		
2	E	3	Total	Mn	0	0
			3	3		

Continued on next page...

Continued from previous page...

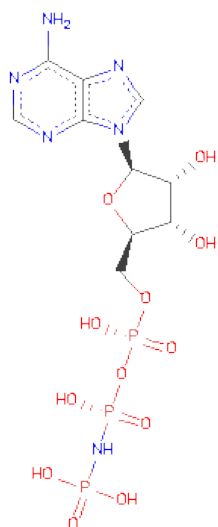
Mol	Chain	Residues	Atoms		ZeroOcc	AltConf
2	H	3	Total	Mn	0	0
			3	3		
2	B	3	Total	Mn	0	0
			3	3		
2	I	3	Total	Mn	0	0
			3	3		
2	C	3	Total	Mn	0	0
			3	3		
2	A	3	Total	Mn	0	0
			3	3		
2	F	3	Total	Mn	0	0
			3	3		

- Molecule 3 is (2S)-2-AMINO-4-(METHYLSULFONIMIDOYL)BUTANOICACID (three-letter code: MSL) (formula: C₅H₁₂N₂O₃S).



Mol	Chain	Residues	Atoms					ZeroOcc	AltConf
3	C	10	Total	C	N	O	S	0	0
			110	50	20	30	10		

- Molecule 4 is PHOSPHOAMINOPHOSPHONICACID-ADENYLATE ESTER (three-letter code: ANP) (formula: C₁₀H₁₇N₆O₁₂P₃).



Mol	Chain	Residues	Atoms					ZeroOcc	AltConf
4	A	1	Total	C	N	O	P	0	0
			31	10	6	12	3		
4	B	1	Total	C	N	O	P	0	0
			31	10	6	12	3		
4	C	1	Total	C	N	O	P	0	0
			31	10	6	12	3		
4	D	1	Total	C	N	O	P	0	0
			31	10	6	12	3		
4	E	1	Total	C	N	O	P	0	0
			31	10	6	12	3		
4	F	1	Total	C	N	O	P	0	0
			31	10	6	12	3		
4	G	1	Total	C	N	O	P	0	0
			31	10	6	12	3		
4	H	1	Total	C	N	O	P	0	0
			31	10	6	12	3		
4	I	1	Total	C	N	O	P	0	0
			31	10	6	12	3		
4	J	1	Total	C	N	O	P	0	0
			31	10	6	12	3		

- Molecule 5 is water.

Mol	Chain	Residues	Atoms		ZeroOcc	AltConf
5	A	32	Total	O	0	0
			32	32		
5	B	36	Total	O	0	0
			36	36		

Continued on next page...

Continued from previous page...

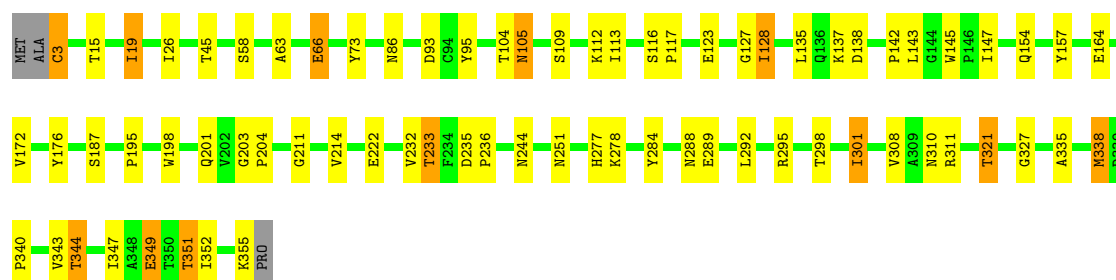
Mol	Chain	Residues	Atoms		ZeroOcc	AltConf
5	C	40	Total 40	O 40	0	0
5	D	42	Total 42	O 42	0	0
5	E	41	Total 41	O 41	0	0
5	F	39	Total 39	O 39	0	0
5	G	40	Total 40	O 40	0	0
5	H	32	Total 32	O 32	0	0
5	I	37	Total 37	O 37	0	0
5	J	38	Total 38	O 38	0	0

3 Residue-property plots

These plots are drawn for all protein, RNA and DNA chains in the entry. The first graphic for a chain summarises the proportions of errors displayed in the second graphic. The second graphic shows the sequence view annotated by issues in geometry and electron density. Residues are color-coded according to the number of geometric quality criteria for which they contain at least one outlier: green = 0, yellow = 1, orange = 2 and red = 3 or more. A red dot above a residue indicates a poor fit to the electron density ($RSRZ > 2$). Stretches of 2 or more consecutive residues without any outlier are shown as a green connector. Residues present in the sample, but not in the model, are shown in grey.

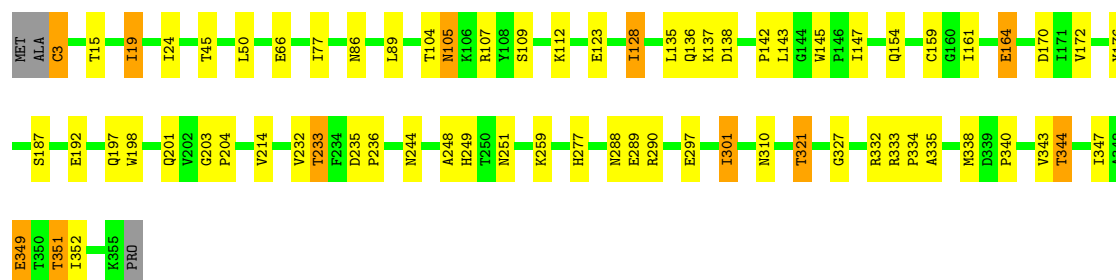
- Molecule 1: glutamine synthetase

Chain A: 



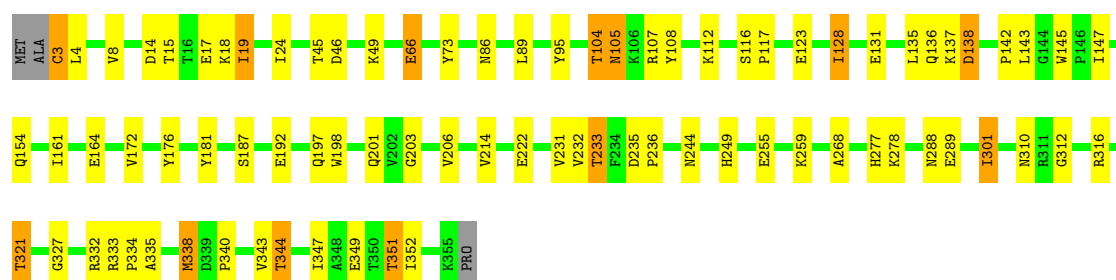
- Molecule 1: glutamine synthetase

Chain B: 



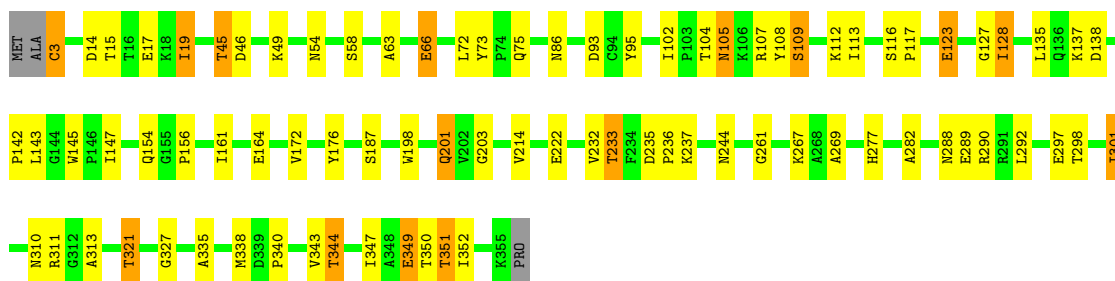
- Molecule 1: glutamine synthetase

Chain C: 



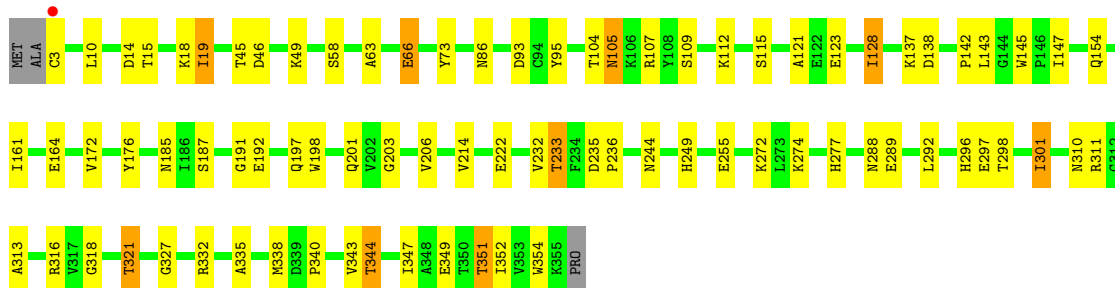
- Molecule 1: glutamine synthetase

Chain D: 



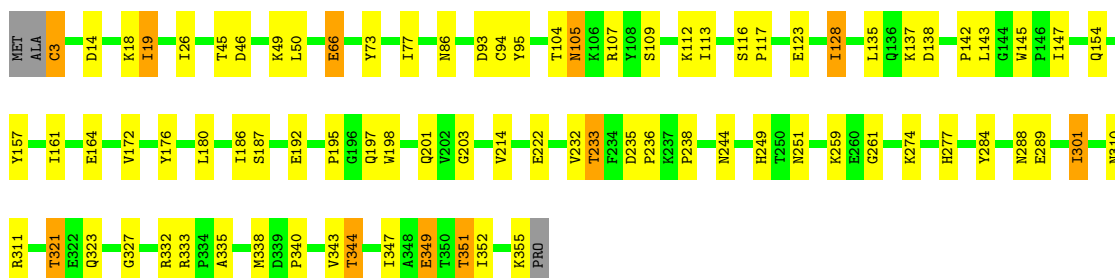
- Molecule 1: glutamine synthetase

Chain E:



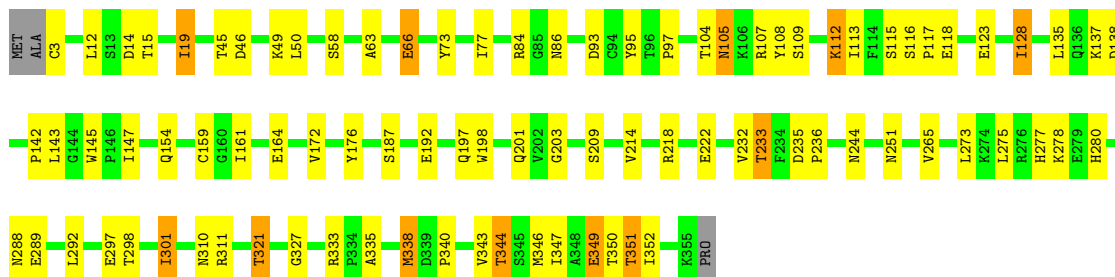
- Molecule 1: glutamine synthetase

Chain F:



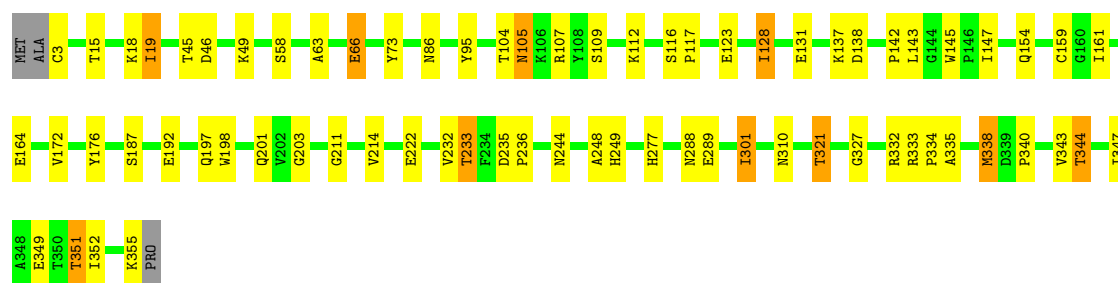
- Molecule 1: glutamine synthetase

Chain G:



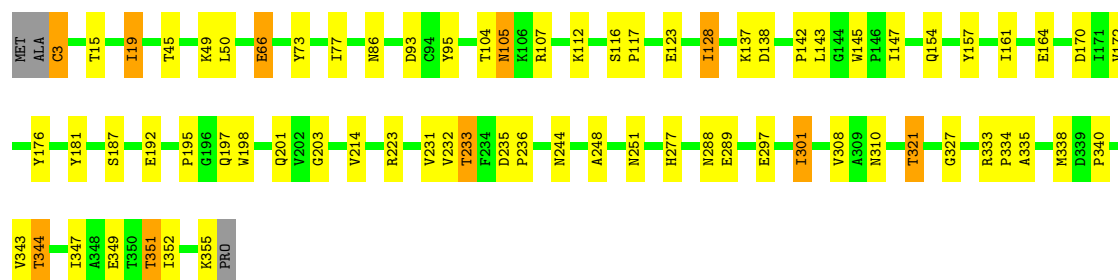
- Molecule 1: glutamine synthetase

Chain H:



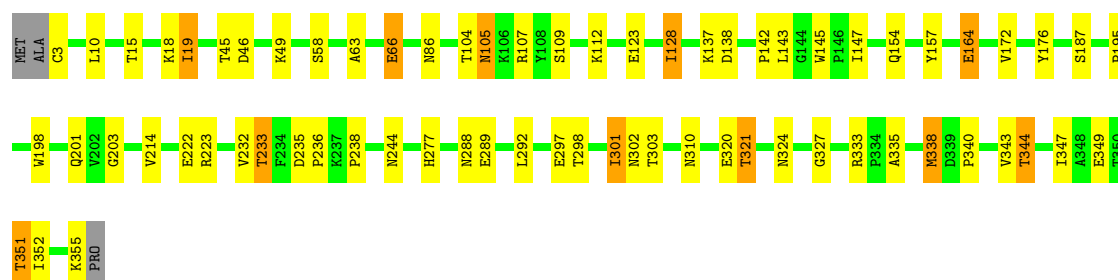
- Molecule 1: glutamine synthetase

Chain I:



- Molecule 1: glutamine synthetase

Chain J:



4 Data and refinement statistics

Property	Value	Source
Space group	P 1 21 1	Depositor
Cell constants a, b, c, α , β , γ	95.88Å 190.94Å 117.90Å 90.00° 101.23° 90.00°	Depositor
Resolution (Å)	33.50 – 3.50 33.50 – 3.50	Depositor EDS
% Data completeness (in resolution range)	83.1 (33.50-3.50) 83.1 (33.50-3.50)	Depositor EDS
R_{merge}	0.08	Depositor
R_{sym}	(Not available)	Depositor
$\langle I/\sigma(I) \rangle$ ¹	3.00 (at 3.47Å)	Xtriage
Refinement program	REFMAC 5.2.0005	Depositor
R, R_{free}	0.166 , 0.209 0.161 , 0.201	Depositor DCC
R_{free} test set	2227 reflections (5.39%)	DCC
Wilson B-factor (Å ²)	86.0	Xtriage
Anisotropy	0.026	Xtriage
Bulk solvent k_{sol} (e/Å ³), B_{sol} (Å ²)	0.23 , 15.1	EDS
Estimated twinning fraction	No twinning to report.	Xtriage
L-test for twinning	$\langle L \rangle = 0.49$, $\langle L^2 \rangle = 0.32$	Xtriage
Outliers	0 of 43542 reflections	Xtriage
F_o, F_c correlation	0.95	EDS
Total number of atoms	28277	wwPDB-VP
Average B, all atoms (Å ²)	75.0	wwPDB-VP

Xtriage's analysis on translational NCS is as follows: *The largest off-origin peak in the Patterson function is 3.63% of the height of the origin peak. No significant pseudotranslation is detected.*

¹Intensities estimated from amplitudes.

5 Model quality ⓘ

5.1 Standard geometry ⓘ

Bond lengths and bond angles in the following residue types are not validated in this section: MSL, ANP, MN

The Z score for a bond length (or angle) is the number of standard deviations the observed value is removed from the expected value. A bond length (or angle) with $|Z| > 5$ is considered an outlier worth inspection. RMSZ is the root-mean-square of all Z scores of the bond lengths (or angles).

Mol	Chain	Bond lengths		Bond angles	
		RMSZ	# Z >5	RMSZ	# Z >5
1	A	0.67	0/2819	0.70	0/3834
1	B	0.69	1/2819 (0.0%)	0.70	0/3834
1	C	0.67	0/2819	0.70	0/3834
1	D	0.75	0/2819	0.72	0/3834
1	E	0.71	0/2819	0.70	0/3834
1	F	0.73	0/2819	0.72	0/3834
1	G	0.74	1/2819 (0.0%)	0.71	1/3834 (0.0%)
1	H	0.70	1/2819 (0.0%)	0.70	0/3834
1	I	0.66	0/2819	0.69	0/3834
1	J	0.67	0/2819	0.70	0/3834
All	All	0.70	3/28190 (0.0%)	0.70	1/38340 (0.0%)

All (3) bond length outliers are listed below:

Mol	Chain	Res	Type	Atoms	Z	Observed(Å)	Ideal(Å)
1	B	159	CYS	CB-SG	-5.96	1.72	1.81
1	H	159	CYS	CB-SG	-5.62	1.72	1.81
1	G	159	CYS	CB-SG	-5.14	1.73	1.81

All (1) bond angle outliers are listed below:

Mol	Chain	Res	Type	Atoms	Z	Observed(°)	Ideal(°)
1	G	218	ARG	NE-CZ-NH2	-5.24	117.68	120.30

There are no chirality outliers.

There are no planarity outliers.

5.2 Close contacts ⓘ

In the following table, the Non-H and H(model) columns list the number of non-hydrogen atoms and hydrogen atoms in the chain respectively. The H(added) column lists the number of hydrogens added by MolProbity. The Clashes column lists the number of clashes within the asymmetric unit, and the number in parentheses is this value normalized per 1000 atoms of the molecule in the chain. The Symm-Clashes column gives symmetry related clashes, in the same way as for the Clashes column.

Mol	Chain	Non-H	H(model)	H(added)	Clashes	Symm-Clashes
1	A	2745	0	2653	48	0
1	B	2745	0	2653	49	0
1	C	2745	0	2653	59	0
1	D	2745	0	2653	73	0
1	E	2745	0	2653	57	0
1	F	2745	0	2653	64	0
1	G	2745	0	2653	63	0
1	H	2745	0	2653	45	0
1	I	2745	0	2653	48	0
1	J	2745	0	2653	43	0
2	A	3	0	0	0	0
2	B	3	0	0	0	0
2	C	3	0	0	0	0
2	D	3	0	0	0	0
2	E	3	0	0	0	0
2	F	3	0	0	0	0
2	G	3	0	0	0	0
2	H	3	0	0	0	0
2	I	3	0	0	0	0
2	J	3	0	0	0	0
3	C	110	0	100	37	0
4	A	31	0	10	7	0
4	B	31	0	11	3	0
4	C	31	0	10	4	0
4	D	31	0	11	6	0
4	E	31	0	11	6	0
4	F	31	0	11	4	0
4	G	31	0	10	4	0
4	H	31	0	10	3	0
4	I	31	0	10	3	0
4	J	31	0	10	3	0
5	A	32	0	0	7	0
5	B	36	0	0	11	0
5	C	40	0	0	12	0
5	D	42	0	0	27	0

Continued on next page...

Continued from previous page...

Mol	Chain	Non-H	H(model)	H(added)	Clashes	Symm-Clashes
5	E	41	0	0	14	0
5	F	39	0	0	12	0
5	G	40	0	0	19	0
5	H	32	0	0	9	0
5	I	37	0	0	7	0
5	J	38	0	0	11	0
All	All	28277	0	26734	546	0

Clashscore is defined as the number of clashes calculated for the entry per 1000 atoms (including hydrogens) of the entry. The overall clashscore for this entry is 10.

All (546) close contacts within the same asymmetric unit are listed below.

Atom-1	Atom-2	Distance(Å)	Clash(Å)
1:G:12:LEU:HD23	5:G:6047:HOH:O	1.47	1.11
3:C:5010:MSL:NE	4:H:6008:ANP:PG	2.25	1.09
1:E:354:TRP:HA	5:E:6026:HOH:O	1.56	1.05
1:G:346:MET:SD	5:G:6041:HOH:O	2.14	1.03
1:E:255:GLU:HG2	5:E:6019:HOH:O	1.58	1.02
1:H:344:THR:HG21	5:H:6034:HOH:O	1.59	0.98
1:E:296:HIS:HD2	5:E:6033:HOH:O	1.46	0.97
1:E:154:GLN:HE22	1:E:244:ASN:H	1.08	0.97
1:I:154:GLN:HE22	1:I:244:ASN:H	1.08	0.97
1:F:128:ILE:HG21	5:F:6034:HOH:O	1.67	0.95
1:F:154:GLN:HE22	1:F:244:ASN:H	1.12	0.95
1:D:154:GLN:HE22	1:D:244:ASN:H	1.13	0.94
1:B:154:GLN:HE22	1:B:244:ASN:H	1.15	0.93
1:D:73:TYR:HB2	5:D:6032:HOH:O	1.69	0.92
1:J:154:GLN:HE22	1:J:244:ASN:H	1.13	0.92
1:C:154:GLN:HE22	1:C:244:ASN:H	1.07	0.91
1:E:185:ASN:HB2	5:E:6036:HOH:O	1.68	0.91
1:H:154:GLN:HE22	1:H:244:ASN:H	1.14	0.90
1:E:274:LYS:HE3	5:E:6025:HOH:O	1.70	0.90
1:A:154:GLN:HE22	1:A:244:ASN:H	1.19	0.89
1:H:321:THR:HB	1:H:327:GLY:HA3	1.55	0.88
1:D:282:ALA:HB3	5:D:6022:HOH:O	1.75	0.87
1:G:154:GLN:HE22	1:G:244:ASN:H	1.19	0.86
1:D:350:THR:HG22	5:D:6024:HOH:O	1.73	0.86
1:D:72:LEU:HG	5:D:6046:HOH:O	1.74	0.86
1:C:259:LYS:HB3	5:C:6028:HOH:O	1.76	0.85
1:D:95:TYR:HE1	5:D:6032:HOH:O	1.59	0.85
1:F:107:ARG:HG2	5:F:6016:HOH:O	1.76	0.84
1:G:280:HIS:HA	5:G:6041:HOH:O	1.76	0.84

Continued on next page...

Continued from previous page...

Atom-1	Atom-2	Distance(Å)	Clash(Å)
1:C:259:LYS:HD2	5:C:6025:HOH:O	1.78	0.83
1:D:321:THR:HB	1:D:327:GLY:HA3	1.59	0.82
1:G:275:LEU:CD2	5:G:6028:HOH:O	2.26	0.82
1:C:268:ALA:HB1	5:C:6031:HOH:O	1.80	0.82
1:E:321:THR:HB	1:E:327:GLY:HA3	1.61	0.82
1:A:321:THR:HB	1:A:327:GLY:HA3	1.61	0.82
1:F:321:THR:HB	1:F:327:GLY:HA3	1.61	0.82
1:G:321:THR:HB	1:G:327:GLY:HA3	1.59	0.81
1:E:19:ILE:HD11	1:E:86:ASN:HB2	1.59	0.81
1:I:321:THR:HB	1:I:327:GLY:HA3	1.61	0.80
1:B:321:THR:HB	1:B:327:GLY:HA3	1.63	0.80
1:B:19:ILE:HD11	1:B:86:ASN:HB2	1.62	0.80
1:F:261:GLY:HA2	5:F:6011:HOH:O	1.82	0.80
1:J:19:ILE:HD11	1:J:86:ASN:HB2	1.64	0.79
5:B:6034:HOH:O	1:C:8:VAL:HG21	1.79	0.79
1:G:19:ILE:HD11	1:G:86:ASN:HB2	1.61	0.79
1:C:321:THR:HB	1:C:327:GLY:HA3	1.61	0.79
1:H:49:LYS:HG2	5:H:6027:HOH:O	1.83	0.79
1:D:93:ASP:HB3	5:D:6032:HOH:O	1.84	0.78
1:D:73:TYR:CB	5:D:6032:HOH:O	2.29	0.78
1:A:19:ILE:HD11	1:A:86:ASN:HB2	1.67	0.77
1:J:321:THR:HB	1:J:327:GLY:HA3	1.67	0.77
1:I:19:ILE:HD11	1:I:86:ASN:HB2	1.66	0.76
3:C:5007:MSL:HG3	1:F:332:ARG:HH22	1.51	0.76
1:D:19:ILE:HD11	1:D:86:ASN:HB2	1.68	0.75
1:F:259:LYS:HD2	5:F:6008:HOH:O	1.88	0.74
1:F:19:ILE:HD11	1:F:86:ASN:HB2	1.70	0.74
1:E:296:HIS:CD2	5:E:6033:HOH:O	2.27	0.74
3:C:5010:MSL:NE	4:H:6008:ANP:O1G	2.16	0.74
1:G:275:LEU:HD23	5:G:6028:HOH:O	1.87	0.73
1:D:311:ARG:NH1	4:D:6004:ANP:O1G	2.21	0.73
1:H:19:ILE:HD11	1:H:86:ASN:HB2	1.71	0.73
4:A:6001:ANP:PG	3:C:5001:MSL:NE	2.62	0.73
1:G:128:ILE:HG12	1:G:214:VAL:HG21	1.70	0.72
1:D:123:GLU:HA	5:D:6015:HOH:O	1.90	0.72
1:D:54:ASN:HA	5:D:6046:HOH:O	1.89	0.71
1:D:45:THR:HG22	5:D:6034:HOH:O	1.89	0.71
1:J:223:ARG:NH1	5:J:6024:HOH:O	2.23	0.71
1:C:128:ILE:HG12	1:C:214:VAL:HG21	1.73	0.70
1:B:344:THR:HG21	5:B:6009:HOH:O	1.90	0.70
1:D:105:ASN:HD22	1:D:105:ASN:C	1.94	0.70
1:F:18:LYS:HE2	5:I:6021:HOH:O	1.92	0.70

Continued on next page...

Continued from previous page...

Atom-1	Atom-2	Distance(Å)	Clash(Å)
1:A:128:ILE:HG12	1:A:214:VAL:HG21	1.73	0.70
1:A:311:ARG:NH1	4:A:6001:ANP:O1G	2.24	0.70
1:J:320:GLU:HB3	5:J:6019:HOH:O	1.92	0.70
1:C:19:ILE:HD11	1:C:86:ASN:HB2	1.74	0.69
3:C:5009:MSL:HG3	1:J:297:GLU:OE2	1.92	0.69
1:E:128:ILE:HG12	1:E:214:VAL:HG21	1.74	0.69
1:D:66:GLU:HA	1:E:310:ASN:OD1	1.92	0.69
1:D:95:TYR:CE1	5:D:6032:HOH:O	2.38	0.68
1:A:3:CYS:HB3	5:E:6009:HOH:O	1.93	0.68
1:J:128:ILE:HG12	1:J:214:VAL:HG21	1.76	0.68
1:I:128:ILE:HG12	1:I:214:VAL:HG21	1.74	0.68
1:F:66:GLU:HA	1:I:310:ASN:OD1	1.93	0.68
1:D:237:LYS:HE2	5:D:6009:HOH:O	1.93	0.67
1:G:118:GLU:HG3	5:G:6021:HOH:O	1.94	0.67
1:G:123:GLU:HG3	5:G:6016:HOH:O	1.95	0.66
1:D:128:ILE:HG12	1:D:214:VAL:HG21	1.78	0.66
1:H:355:LYS:C	5:H:6009:HOH:O	2.33	0.66
1:B:332:ARG:HH22	3:C:5002:MSL:HG3	1.61	0.66
1:D:203:GLY:HA2	4:D:6004:ANP:O3'	1.95	0.66
1:I:105:ASN:HD22	1:I:105:ASN:C	1.97	0.66
1:F:128:ILE:HG12	1:F:214:VAL:HG21	1.78	0.65
1:G:107:ARG:HG2	5:G:6019:HOH:O	1.95	0.65
1:D:277:HIS:HE1	1:D:301:ILE:O	1.79	0.65
3:C:5004:MSL:NE	4:D:6004:ANP:PG	2.69	0.65
1:J:355:LYS:HB2	5:J:6033:HOH:O	1.97	0.65
1:G:112:LYS:HD3	5:G:6031:HOH:O	1.97	0.65
1:A:347:ILE:O	1:A:351:THR:HB	1.97	0.65
1:J:338:MET:HG3	1:J:343:VAL:HG21	1.77	0.65
1:F:347:ILE:O	1:F:351:THR:HB	1.97	0.64
1:B:154:GLN:HB2	5:B:6026:HOH:O	1.96	0.64
1:E:115:SER:HB3	5:E:6016:HOH:O	1.95	0.64
1:F:154:GLN:HB2	5:F:6013:HOH:O	1.96	0.64
1:C:278:LYS:HD3	5:C:6029:HOH:O	1.96	0.64
1:F:351:THR:HG22	1:F:352:ILE:HG13	1.80	0.64
3:C:5008:MSL:HG3	1:I:297:GLU:OE2	1.96	0.64
1:D:338:MET:HG3	1:D:343:VAL:HG21	1.80	0.64
3:C:5006:MSL:HG3	1:G:297:GLU:OE2	1.98	0.64
1:H:347:ILE:O	1:H:351:THR:HB	1.98	0.64
1:G:275:LEU:HD21	5:G:6028:HOH:O	1.89	0.64
3:C:5007:MSL:HB2	1:F:249:HIS:CE1	2.33	0.63
1:C:4:LEU:HB3	5:C:6019:HOH:O	1.98	0.63
1:F:340:PRO:O	1:F:344:THR:HB	1.99	0.63

Continued on next page...

Continued from previous page...

Atom-1	Atom-2	Distance(Å)	Clash(Å)
1:F:94:CYS:N	5:F:6010:HOH:O	2.31	0.63
1:E:351:THR:HG22	1:E:352:ILE:HG13	1.81	0.63
1:B:105:ASN:HD22	1:B:105:ASN:C	2.02	0.62
1:E:105:ASN:C	1:E:105:ASN:HD22	2.03	0.62
1:H:277:HIS:HE1	1:H:301:ILE:O	1.82	0.62
1:E:347:ILE:O	1:E:351:THR:HB	1.99	0.62
1:F:310:ASN:OD1	1:G:66:GLU:HA	1.99	0.62
1:H:128:ILE:HG12	1:H:214:VAL:HG21	1.81	0.62
1:C:105:ASN:C	1:C:105:ASN:HD22	2.00	0.62
1:J:105:ASN:HD22	1:J:105:ASN:C	2.02	0.62
1:H:203:GLY:HA2	4:H:6008:ANP:O3'	2.00	0.62
1:B:249:HIS:CE1	3:C:5002:MSL:HB2	2.35	0.62
1:E:338:MET:HG3	1:E:343:VAL:HG21	1.82	0.62
1:J:277:HIS:HE1	1:J:301:ILE:O	1.82	0.62
1:F:251:ASN:ND2	4:F:6006:ANP:H5'2	2.15	0.61
1:D:3:CYS:HB3	5:D:6017:HOH:O	2.00	0.61
3:C:5006:MSL:NE	4:G:6007:ANP:PG	2.74	0.61
1:G:347:ILE:O	1:G:351:THR:HB	2.00	0.61
1:B:351:THR:HG22	1:B:352:ILE:HG13	1.83	0.61
1:D:347:ILE:O	1:D:351:THR:HB	2.01	0.61
1:B:277:HIS:HE1	1:B:301:ILE:O	1.83	0.61
5:H:6016:HOH:O	1:I:3:CYS:HB3	2.00	0.61
1:C:154:GLN:HE22	1:C:244:ASN:N	1.90	0.61
1:E:277:HIS:HE1	1:E:301:ILE:O	1.84	0.61
1:G:105:ASN:HD22	1:G:105:ASN:C	2.05	0.60
1:A:172:VAL:HG21	1:A:198:TRP:CD2	2.36	0.60
1:A:340:PRO:O	1:A:344:THR:HB	2.01	0.60
1:D:267:LYS:HD3	5:D:6020:HOH:O	2.01	0.60
1:B:338:MET:HG3	1:B:343:VAL:HG21	1.84	0.60
1:G:277:HIS:HE1	1:G:301:ILE:O	1.84	0.60
1:D:172:VAL:HG21	1:D:198:TRP:CD2	2.37	0.60
1:C:310:ASN:OD1	1:E:66:GLU:HA	2.01	0.60
1:B:128:ILE:HG12	1:B:214:VAL:HG21	1.82	0.60
1:F:3:CYS:HB3	5:J:6048:HOH:O	2.01	0.60
1:G:273:LEU:HA	5:G:6036:HOH:O	2.02	0.60
3:C:5005:MSL:OE	4:E:6005:ANP:O3G	2.20	0.60
1:G:73:TYR:CD2	1:G:95:TYR:CE1	2.89	0.60
1:A:278:LYS:HB2	5:A:6011:HOH:O	2.02	0.59
1:D:17:GLU:HG2	5:D:6030:HOH:O	2.02	0.59
1:H:310:ASN:OD1	1:J:66:GLU:HA	2.02	0.59
3:C:5004:MSL:HG3	1:D:297:GLU:OE2	2.02	0.59
1:F:203:GLY:HA2	4:F:6006:ANP:O3'	2.02	0.59

Continued on next page...

Continued from previous page...

Atom-1	Atom-2	Distance(Å)	Clash(Å)
3:C:5009:MSL:NE	4:J:6010:ANP:PG	2.76	0.59
1:B:170:ASP:HA	5:B:6034:HOH:O	2.02	0.59
1:D:123:GLU:HG2	5:D:6015:HOH:O	2.01	0.59
1:D:105:ASN:C	1:D:105:ASN:ND2	2.56	0.59
1:A:277:HIS:HE1	1:A:301:ILE:O	1.85	0.59
1:J:203:GLY:HA2	4:J:6010:ANP:O3'	2.03	0.58
1:B:204:PRO:HD2	5:B:6028:HOH:O	2.02	0.58
1:F:277:HIS:HE1	1:F:301:ILE:O	1.87	0.58
1:C:347:ILE:O	1:C:351:THR:HB	2.03	0.58
1:H:338:MET:HG3	1:H:343:VAL:HG21	1.85	0.58
1:C:277:HIS:HE1	1:C:301:ILE:O	1.86	0.58
1:B:340:PRO:O	1:B:344:THR:HB	2.04	0.58
1:E:187:SER:HB3	1:E:203:GLY:HA3	1.84	0.58
1:H:340:PRO:O	1:H:344:THR:HB	2.03	0.58
1:E:187:SER:HB3	1:E:203:GLY:CA	2.34	0.58
1:I:154:GLN:HE22	1:I:244:ASN:N	1.91	0.57
1:F:274:LYS:HE2	5:F:6041:HOH:O	2.04	0.57
1:C:351:THR:HG22	1:C:352:ILE:HG13	1.85	0.57
1:I:66:GLU:HA	1:J:310:ASN:OD1	2.03	0.57
1:F:105:ASN:HD22	1:F:105:ASN:C	2.08	0.57
1:B:347:ILE:O	1:B:351:THR:HB	2.04	0.57
1:J:347:ILE:O	1:J:351:THR:HB	2.05	0.57
1:D:269:ALA:HA	5:D:6006:HOH:O	2.04	0.57
1:I:105:ASN:ND2	1:I:105:ASN:C	2.58	0.57
1:J:351:THR:HG22	1:J:352:ILE:HG13	1.85	0.57
1:F:172:VAL:HG21	1:F:198:TRP:CD2	2.39	0.57
1:A:105:ASN:HD22	1:A:105:ASN:C	2.07	0.57
1:A:204:PRO:HD3	4:A:6001:ANP:O2'	2.05	0.57
1:A:351:THR:HG22	1:A:352:ILE:HG13	1.87	0.57
1:I:351:THR:HG22	1:I:352:ILE:HG13	1.87	0.57
1:I:355:LYS:HB3	5:I:6022:HOH:O	2.04	0.57
1:J:172:VAL:HG21	1:J:198:TRP:CD2	2.39	0.57
1:C:73:TYR:CD2	1:C:95:TYR:CE1	2.93	0.57
1:G:340:PRO:O	1:G:344:THR:HB	2.04	0.57
1:I:347:ILE:O	1:I:351:THR:HB	2.05	0.57
1:B:172:VAL:HG21	1:B:198:TRP:CD2	2.39	0.57
1:F:187:SER:HB3	1:F:203:GLY:CA	2.35	0.56
1:F:187:SER:HB3	1:F:203:GLY:HA3	1.86	0.56
1:J:172:VAL:HG13	5:J:6011:HOH:O	2.04	0.56
1:C:172:VAL:HG21	1:C:198:TRP:CD2	2.40	0.56
1:E:154:GLN:HE22	1:E:244:ASN:N	1.91	0.56
1:B:19:ILE:HD11	1:B:86:ASN:CB	2.34	0.56

Continued on next page...

Continued from previous page...

Atom-1	Atom-2	Distance(Å)	Clash(Å)
1:J:19:ILE:HD11	1:J:86:ASN:CB	2.34	0.56
3:C:5005:MSL:HB2	1:E:249:HIS:CE1	2.40	0.56
1:I:187:SER:HB3	1:I:203:GLY:CA	2.35	0.56
1:C:187:SER:HB3	1:C:203:GLY:CA	2.36	0.56
1:J:340:PRO:O	1:J:344:THR:HB	2.05	0.56
1:B:310:ASN:OD1	1:C:66:GLU:HA	2.05	0.56
1:I:355:LYS:HB2	5:I:6029:HOH:O	2.06	0.56
1:G:338:MET:HG3	1:G:343:VAL:HG21	1.88	0.56
1:G:311:ARG:NH1	4:G:6007:ANP:O1G	2.39	0.56
1:E:311:ARG:NH1	4:E:6005:ANP:O3G	2.38	0.56
1:G:172:VAL:HG21	1:G:198:TRP:CD2	2.41	0.56
1:D:351:THR:HG22	1:D:352:ILE:HG13	1.87	0.56
1:G:310:ASN:OD1	1:H:66:GLU:HA	2.06	0.56
1:H:351:THR:HG22	1:H:352:ILE:HG13	1.88	0.55
1:C:131:GLU:OE1	3:C:5003:MSL:HB3	2.06	0.55
1:G:278:LYS:HB2	5:G:6014:HOH:O	2.05	0.55
1:E:19:ILE:HD11	1:E:86:ASN:CB	2.35	0.55
1:D:187:SER:HB3	1:D:203:GLY:CA	2.37	0.55
1:I:338:MET:HG3	1:I:343:VAL:HG21	1.88	0.55
1:H:105:ASN:HD22	1:H:105:ASN:C	2.08	0.55
1:A:3:CYS:HA	5:A:6012:HOH:O	2.04	0.55
1:H:172:VAL:HG21	1:H:198:TRP:CD2	2.41	0.55
1:F:154:GLN:NE2	1:F:244:ASN:H	1.95	0.55
1:G:251:ASN:ND2	4:G:6007:ANP:H5'2	2.22	0.55
1:C:187:SER:HB3	1:C:203:GLY:HA3	1.88	0.55
1:J:10:LEU:HD23	5:J:6031:HOH:O	2.06	0.55
1:C:105:ASN:C	1:C:105:ASN:ND2	2.60	0.55
1:I:277:HIS:HE1	1:I:301:ILE:O	1.90	0.55
1:A:63:ALA:HA	5:A:6031:HOH:O	2.06	0.55
1:D:187:SER:HB3	1:D:203:GLY:HA3	1.89	0.55
1:E:172:VAL:HG21	1:E:198:TRP:CD2	2.42	0.55
1:C:338:MET:HG3	1:C:343:VAL:HG21	1.88	0.55
1:A:310:ASN:OD1	1:B:66:GLU:HA	2.07	0.55
1:C:312:GLY:N	5:C:6030:HOH:O	2.39	0.54
1:I:340:PRO:O	1:I:344:THR:HB	2.07	0.54
1:I:170:ASP:HB2	5:I:6046:HOH:O	2.06	0.54
1:C:3:CYS:HB3	5:C:6015:HOH:O	2.08	0.54
1:G:137:LYS:O	1:G:138:ASP:HB2	2.07	0.54
1:D:340:PRO:O	1:D:344:THR:HB	2.07	0.54
1:A:73:TYR:CD2	1:A:95:TYR:CE1	2.95	0.54
1:I:19:ILE:HD11	1:I:86:ASN:CB	2.35	0.54
1:E:105:ASN:ND2	1:E:105:ASN:C	2.61	0.54

Continued on next page...

Continued from previous page...

Atom-1	Atom-2	Distance(Å)	Clash(Å)
1:A:26:ILE:N	5:A:6007:HOH:O	2.35	0.54
1:A:137:LYS:O	1:A:138:ASP:HB2	2.07	0.54
1:B:161:ILE:HD12	1:C:222:GLU:HB3	1.89	0.54
1:G:115:SER:HB3	5:G:6027:HOH:O	2.07	0.54
1:H:137:LYS:O	1:H:138:ASP:HB2	2.08	0.54
1:E:316:ARG:NH1	4:E:6005:ANP:O1B	2.27	0.53
1:C:340:PRO:O	1:C:344:THR:HB	2.09	0.53
3:C:5008:MSL:NE	4:I:6009:ANP:PG	2.82	0.53
1:B:105:ASN:ND2	1:B:105:ASN:C	2.61	0.53
1:A:66:GLU:HA	1:D:310:ASN:OD1	2.08	0.53
1:J:187:SER:HB3	1:J:203:GLY:HA3	1.90	0.53
1:G:187:SER:HB3	1:G:203:GLY:CA	2.38	0.53
1:F:26:ILE:HG21	5:F:6042:HOH:O	2.07	0.53
1:D:19:ILE:HD11	1:D:86:ASN:CB	2.36	0.53
1:E:105:ASN:HD22	1:E:107:ARG:H	1.55	0.53
1:I:49:LYS:HE2	5:I:6036:HOH:O	2.08	0.52
1:I:137:LYS:O	1:I:138:ASP:HB2	2.09	0.52
1:J:187:SER:HB3	1:J:203:GLY:CA	2.40	0.52
1:I:172:VAL:HG21	1:I:198:TRP:CD2	2.45	0.52
1:C:137:LYS:O	1:C:138:ASP:HB2	2.10	0.52
1:H:321:THR:CB	1:H:327:GLY:HA3	2.35	0.52
1:G:351:THR:HG22	1:G:352:ILE:HG13	1.92	0.52
3:C:5003:MSL:OE	4:C:6003:ANP:O1G	2.27	0.52
1:G:209:SER:HA	5:G:6013:HOH:O	2.09	0.52
1:G:19:ILE:HD11	1:G:86:ASN:CB	2.36	0.52
1:H:142:PRO:HB2	1:H:145:TRP:CD1	2.45	0.52
1:J:105:ASN:ND2	1:J:105:ASN:C	2.62	0.52
1:A:19:ILE:HD11	1:A:86:ASN:CB	2.39	0.52
1:F:19:ILE:HD11	1:F:86:ASN:CB	2.37	0.52
1:G:105:ASN:HD22	1:G:107:ARG:H	1.57	0.52
1:E:203:GLY:HA2	4:E:6005:ANP:O3'	2.11	0.51
1:A:338:MET:HG3	1:A:343:VAL:HG21	1.92	0.51
1:F:311:ARG:NH1	4:F:6006:ANP:O1G	2.42	0.51
1:D:105:ASN:HD22	1:D:107:ARG:H	1.58	0.51
1:I:142:PRO:HB2	1:I:145:TRP:CD1	2.45	0.51
1:E:318:GLY:HA3	5:E:6020:HOH:O	2.09	0.51
1:E:236:PRO:HB3	1:E:335:ALA:HB1	1.91	0.51
1:F:338:MET:HG3	1:F:343:VAL:HG21	1.92	0.51
1:E:105:ASN:ND2	1:E:107:ARG:H	2.08	0.51
1:H:142:PRO:HB2	1:H:145:TRP:CG	2.46	0.51
1:F:50:LEU:HD11	1:F:77:ILE:HD11	1.92	0.51
1:I:187:SER:HB3	1:I:203:GLY:HA3	1.93	0.51

Continued on next page...

Continued from previous page...

Atom-1	Atom-2	Distance(Å)	Clash(Å)
1:E:206:VAL:CG1	5:E:6022:HOH:O	2.58	0.51
1:H:192:GLU:HB3	1:H:197:GLN:HE21	1.75	0.51
1:J:105:ASN:HD22	1:J:107:ARG:H	1.58	0.51
1:A:295:ARG:HG3	5:A:6009:HOH:O	2.10	0.51
1:B:233:THR:HB	1:B:235:ASP:H	1.77	0.50
1:D:73:TYR:CD2	5:D:6032:HOH:O	2.55	0.50
1:I:142:PRO:HB2	1:I:145:TRP:CG	2.46	0.50
1:I:73:TYR:CD2	1:I:95:TYR:CE1	2.99	0.50
1:A:105:ASN:ND2	1:A:105:ASN:C	2.65	0.50
1:J:137:LYS:O	1:J:138:ASP:HB2	2.11	0.50
1:A:142:PRO:HB2	1:A:145:TRP:CD1	2.47	0.50
1:I:157:TYR:CD1	1:I:195:PRO:HD3	2.47	0.50
1:A:187:SER:HB3	1:A:203:GLY:HA3	1.93	0.50
1:E:137:LYS:O	1:E:138:ASP:HB2	2.12	0.50
1:H:105:ASN:C	1:H:105:ASN:ND2	2.65	0.49
1:G:50:LEU:HD11	1:G:77:ILE:HD11	1.94	0.49
1:G:236:PRO:HB3	1:G:335:ALA:HB1	1.94	0.49
1:H:187:SER:HB3	1:H:203:GLY:CA	2.42	0.49
1:C:203:GLY:HA2	4:C:6003:ANP:O3'	2.13	0.49
1:C:192:GLU:HB3	1:C:197:GLN:HE21	1.76	0.49
1:D:236:PRO:HB3	1:D:335:ALA:HB1	1.94	0.49
1:A:187:SER:HB3	1:A:203:GLY:CA	2.43	0.49
1:C:105:ASN:HD22	1:C:107:ARG:H	1.60	0.49
1:E:154:GLN:NE2	1:E:244:ASN:H	1.92	0.49
1:F:274:LYS:CE	5:F:6041:HOH:O	2.61	0.49
1:G:105:ASN:C	1:G:105:ASN:ND2	2.65	0.49
1:I:251:ASN:ND2	4:I:6009:ANP:H5'2	2.27	0.49
1:E:121:ALA:HA	5:E:6027:HOH:O	2.11	0.49
1:G:115:SER:CB	5:G:6027:HOH:O	2.61	0.49
1:H:161:ILE:HD12	1:J:222:GLU:HB3	1.95	0.49
1:B:135:LEU:HD23	1:B:142:PRO:HA	1.95	0.49
1:D:222:GLU:HB3	1:E:161:ILE:HD12	1.94	0.49
1:F:105:ASN:ND2	1:F:105:ASN:C	2.66	0.48
1:A:58:SER:HA	1:A:63:ALA:O	2.12	0.48
1:C:236:PRO:HB3	1:C:335:ALA:HB1	1.95	0.48
1:F:128:ILE:HD13	1:F:338:MET:HE3	1.95	0.48
1:B:259:LYS:HD2	5:B:6016:HOH:O	2.12	0.48
1:E:142:PRO:HB2	1:E:145:TRP:CD1	2.48	0.48
1:G:233:THR:HB	1:G:235:ASP:H	1.78	0.48
1:B:137:LYS:O	1:B:138:ASP:HB2	2.14	0.48
1:D:109:SER:HB2	5:D:6005:HOH:O	2.12	0.48
1:I:105:ASN:HD22	1:I:107:ARG:H	1.61	0.48

Continued on next page...

Continued from previous page...

Atom-1	Atom-2	Distance(Å)	Clash(Å)
1:D:58:SER:HA	1:D:63:ALA:O	2.14	0.48
1:B:297:GLU:OE2	3:C:5002:MSL:HG2	2.14	0.48
1:E:142:PRO:HB2	1:E:145:TRP:CG	2.48	0.48
1:J:303:THR:HG21	5:J:6045:HOH:O	2.13	0.48
1:F:73:TYR:CD2	1:F:95:TYR:CE1	3.02	0.48
1:E:73:TYR:CD2	1:E:95:TYR:CE1	3.01	0.48
1:D:113:ILE:HD13	1:D:349:GLU:HG3	1.95	0.48
1:G:187:SER:HB3	1:G:203:GLY:HA3	1.94	0.48
1:G:273:LEU:HD23	5:G:6036:HOH:O	2.14	0.48
1:A:203:GLY:HA2	4:A:6001:ANP:O3'	2.14	0.48
1:F:142:PRO:HB2	1:F:145:TRP:CG	2.49	0.48
1:A:251:ASN:ND2	4:A:6001:ANP:H5'2	2.29	0.48
1:H:236:PRO:HB3	1:H:335:ALA:HB1	1.96	0.48
1:A:142:PRO:HB2	1:A:145:TRP:CG	2.49	0.47
1:D:203:GLY:HA2	4:D:6004:ANP:HO3'	1.79	0.47
1:D:128:ILE:HD13	1:D:338:MET:HE3	1.96	0.47
4:A:6001:ANP:O1G	3:C:5001:MSL:NE	2.48	0.47
1:H:332:ARG:HD3	5:H:6035:HOH:O	2.14	0.47
1:C:233:THR:HB	1:C:235:ASP:H	1.79	0.47
1:B:187:SER:HB3	1:B:203:GLY:CA	2.44	0.47
1:J:157:TYR:CD1	1:J:195:PRO:HD3	2.49	0.47
1:F:137:LYS:O	1:F:138:ASP:HB2	2.14	0.47
1:B:251:ASN:ND2	4:B:6002:ANP:H5'2	2.29	0.47
1:B:142:PRO:HB2	1:B:145:TRP:CD1	2.50	0.47
1:C:255:GLU:HG2	5:C:6042:HOH:O	2.13	0.47
1:E:340:PRO:O	1:E:344:THR:HB	2.14	0.47
3:C:5007:MSL:OE	4:F:6006:ANP:O1G	2.33	0.47
1:J:105:ASN:ND2	1:J:107:ARG:H	2.13	0.47
1:H:333:ARG:N	1:H:334:PRO:CD	2.77	0.47
1:A:292:LEU:HD23	1:A:298:THR:HB	1.96	0.47
1:F:18:LYS:O	1:F:19:ILE:HD12	2.15	0.47
1:G:105:ASN:ND2	1:G:107:ARG:H	2.13	0.47
1:J:236:PRO:HB3	1:J:335:ALA:HB1	1.97	0.47
1:D:142:PRO:HB2	1:D:145:TRP:CD1	2.50	0.47
1:E:233:THR:HB	1:E:235:ASP:H	1.80	0.47
1:G:142:PRO:HB2	1:G:145:TRP:CD1	2.50	0.47
1:J:320:GLU:HB2	5:J:6039:HOH:O	2.15	0.47
1:G:265:VAL:HG12	5:G:6011:HOH:O	2.15	0.47
1:H:19:ILE:HD11	1:H:86:ASN:CB	2.43	0.47
1:G:135:LEU:HD23	1:G:142:PRO:HA	1.97	0.47
1:D:261:GLY:HA2	5:D:6010:HOH:O	2.14	0.47
1:H:73:TYR:CD2	1:H:95:TYR:CE1	3.03	0.47

Continued on next page...

Continued from previous page...

Atom-1	Atom-2	Distance(Å)	Clash(Å)
1:A:236:PRO:HB3	1:A:335:ALA:HB1	1.95	0.47
1:C:206:VAL:HG22	5:C:6022:HOH:O	2.15	0.46
1:C:104:THR:HA	5:C:6006:HOH:O	2.14	0.46
1:C:105:ASN:HD21	1:C:108:TYR:H	1.63	0.46
1:B:192:GLU:HB3	1:B:197:GLN:HE21	1.80	0.46
3:C:5007:MSL:HG3	1:F:332:ARG:NH2	2.27	0.46
1:I:233:THR:HB	1:I:235:ASP:H	1.81	0.46
1:J:233:THR:HB	1:J:235:ASP:H	1.81	0.46
1:C:161:ILE:HD12	1:E:222:GLU:HB3	1.97	0.46
1:F:222:GLU:HB3	1:I:161:ILE:HD12	1.98	0.46
1:C:17:GLU:HA	5:C:6035:HOH:O	2.15	0.46
1:H:49:LYS:NZ	5:H:6039:HOH:O	2.47	0.46
1:B:187:SER:HB2	5:B:6028:HOH:O	2.15	0.46
1:C:249:HIS:CE1	3:C:5003:MSL:HB2	2.50	0.46
1:E:206:VAL:HG13	5:E:6022:HOH:O	2.14	0.46
1:H:187:SER:HB3	1:H:203:GLY:HA3	1.98	0.46
1:D:201:GLN:HG2	4:D:6004:ANP:O2A	2.16	0.46
1:E:192:GLU:HB3	1:E:197:GLN:HE21	1.81	0.46
1:C:19:ILE:HD11	1:C:86:ASN:CB	2.44	0.46
1:D:142:PRO:HB2	1:D:145:TRP:CG	2.51	0.46
1:F:142:PRO:HB2	1:F:145:TRP:CD1	2.51	0.45
1:I:236:PRO:HB3	1:I:335:ALA:HB1	1.98	0.45
1:I:105:ASN:ND2	1:I:107:ARG:H	2.14	0.45
1:G:203:GLY:HA2	4:G:6007:ANP:O3'	2.16	0.45
1:F:301:ILE:HG13	1:F:301:ILE:H	1.52	0.45
1:I:192:GLU:HB3	1:I:197:GLN:HE21	1.82	0.45
1:D:116:SER:HA	1:D:117:PRO:HD3	1.82	0.45
1:F:236:PRO:HB3	1:F:335:ALA:HB1	1.99	0.45
1:D:105:ASN:ND2	1:D:107:ARG:H	2.14	0.45
4:B:6002:ANP:PG	3:C:5002:MSL:NE	2.89	0.45
1:B:105:ASN:HD22	1:B:107:ARG:H	1.65	0.45
1:F:161:ILE:HD12	1:G:222:GLU:HB3	1.98	0.45
1:C:105:ASN:ND2	1:C:108:TYR:H	2.15	0.45
1:F:46:ASP:HB3	1:F:49:LYS:HD3	1.99	0.45
1:E:10:LEU:HA	5:E:6013:HOH:O	2.17	0.45
1:F:73:TYR:HB2	1:F:93:ASP:HB3	1.97	0.45
1:G:49:LYS:HE2	5:G:6025:HOH:O	2.16	0.45
1:A:295:ARG:HD2	5:A:6013:HOH:O	2.17	0.45
1:E:46:ASP:HB3	1:E:49:LYS:HD3	1.97	0.45
1:D:105:ASN:ND2	1:D:108:TYR:H	2.15	0.44
1:G:301:ILE:HG13	1:G:301:ILE:H	1.48	0.44
3:C:5005:MSL:NE	4:E:6005:ANP:PG	2.90	0.44

Continued on next page...

Continued from previous page...

Atom-1	Atom-2	Distance(Å)	Clash(Å)
1:C:277:HIS:CD2	1:C:333:ARG:HH11	2.35	0.44
1:I:355:LYS:HG2	5:I:6044:HOH:O	2.16	0.44
1:F:355:LYS:HB3	5:F:6014:HOH:O	2.16	0.44
1:C:24:ILE:HD11	1:C:89:LEU:HD22	2.00	0.44
1:D:46:ASP:HB3	1:D:49:LYS:HD3	1.98	0.44
1:E:18:LYS:O	1:E:19:ILE:HD12	2.17	0.44
1:F:93:ASP:HB3	1:F:95:TYR:HE1	1.83	0.44
3:C:5009:MSL:OE	4:J:6010:ANP:O1G	2.35	0.44
1:D:73:TYR:CD2	1:D:95:TYR:CE1	3.06	0.44
1:H:355:LYS:HB3	5:H:6009:HOH:O	2.16	0.44
3:C:5005:MSL:OE	1:E:311:ARG:HD3	2.18	0.44
1:G:73:TYR:HB2	1:G:93:ASP:HB3	1.98	0.44
3:C:5003:MSL:NE	4:C:6003:ANP:PG	2.90	0.44
1:A:284:TYR:CD2	1:A:343:VAL:HG22	2.53	0.44
1:H:233:THR:HB	1:H:235:ASP:H	1.83	0.44
1:C:136:GLN:HB3	5:C:6009:HOH:O	2.17	0.44
1:D:72:LEU:CG	5:D:6046:HOH:O	2.48	0.44
1:J:292:LEU:HD23	1:J:298:THR:HB	2.00	0.44
1:I:73:TYR:HB2	1:I:93:ASP:HB3	2.00	0.44
1:F:135:LEU:HD23	1:F:142:PRO:HA	2.00	0.44
1:J:324:ASN:CB	5:J:6034:HOH:O	2.64	0.44
1:A:157:TYR:CD1	1:A:195:PRO:HD3	2.53	0.44
1:B:187:SER:HB3	1:B:203:GLY:HA3	1.99	0.43
1:D:105:ASN:HD21	1:D:108:TYR:H	1.66	0.43
3:C:5005:MSL:HG3	1:E:332:ARG:HH22	1.83	0.43
1:B:154:GLN:NE2	1:B:244:ASN:H	1.98	0.43
1:E:310:ASN:HD22	1:E:313:ALA:HB2	1.83	0.43
1:A:172:VAL:HG21	1:A:198:TRP:CE3	2.54	0.43
1:G:142:PRO:HB2	1:G:145:TRP:CG	2.53	0.43
1:F:233:THR:HB	1:F:235:ASP:H	1.83	0.43
1:C:116:SER:HA	1:C:117:PRO:HD3	1.85	0.43
1:A:73:TYR:HB2	1:A:93:ASP:HB3	2.00	0.43
1:A:284:TYR:CE2	1:A:343:VAL:HG22	2.54	0.43
1:D:233:THR:HB	1:D:235:ASP:H	1.84	0.43
1:J:58:SER:HA	1:J:63:ALA:O	2.19	0.43
1:D:310:ASN:HD22	1:D:313:ALA:HB2	1.82	0.43
5:F:6037:HOH:O	1:G:97:PRO:HG2	2.19	0.43
1:I:116:SER:HA	1:I:117:PRO:HD3	1.86	0.43
1:E:272:LYS:HA	5:E:6035:HOH:O	2.19	0.43
1:B:301:ILE:H	1:B:301:ILE:HG13	1.53	0.43
1:F:113:ILE:HD13	1:F:349:GLU:HG3	1.99	0.43
1:B:3:CYS:N	5:B:6032:HOH:O	2.52	0.43

Continued on next page...

Continued from previous page...

Atom-1	Atom-2	Distance(Å)	Clash(Å)
1:D:93:ASP:CB	5:D:6032:HOH:O	2.55	0.43
1:H:46:ASP:HB3	1:H:49:LYS:HD3	2.01	0.43
3:C:5007:MSL:CB	1:F:249:HIS:CE1	3.01	0.43
1:D:127:GLY:HA3	4:D:6004:ANP:O4'	2.19	0.43
1:C:316:ARG:NH1	4:C:6003:ANP:O1B	2.43	0.43
1:G:192:GLU:HB3	1:G:197:GLN:HE21	1.84	0.43
1:G:113:ILE:HD13	1:G:349:GLU:HG3	2.01	0.43
1:B:154:GLN:HE22	1:B:244:ASN:N	1.98	0.42
1:H:18:LYS:O	1:H:19:ILE:HD12	2.20	0.42
1:A:211:GLY:HA2	1:A:340:PRO:HB2	2.01	0.42
1:G:116:SER:HA	1:G:117:PRO:HD3	1.80	0.42
1:E:93:ASP:HB3	1:E:95:TYR:HE1	1.84	0.42
1:D:235:ASP:OD2	1:D:290:ARG:NH2	2.52	0.42
1:H:116:SER:HA	1:H:117:PRO:HD3	1.76	0.42
1:I:50:LEU:HD11	1:I:77:ILE:HD11	2.00	0.42
1:B:333:ARG:N	1:B:334:PRO:CD	2.82	0.42
1:F:277:HIS:CD2	1:F:333:ARG:HH11	2.38	0.42
1:C:333:ARG:N	1:C:334:PRO:CD	2.82	0.42
1:F:180:LEU:HG	1:F:186:ILE:CG2	2.49	0.42
1:F:157:TYR:CD1	1:F:195:PRO:HD3	2.54	0.42
1:E:58:SER:HA	1:E:63:ALA:O	2.19	0.42
1:B:249:HIS:HE1	3:C:5002:MSL:HB2	1.82	0.42
4:B:6002:ANP:O1G	3:C:5002:MSL:OE	2.38	0.42
1:G:105:ASN:ND2	1:G:108:TYR:H	2.17	0.42
1:H:131:GLU:HG2	1:H:192:GLU:HG3	2.02	0.42
1:C:135:LEU:HD23	1:C:142:PRO:HA	2.02	0.42
1:F:116:SER:HA	1:F:117:PRO:HD3	1.82	0.42
1:H:58:SER:HA	1:H:63:ALA:O	2.20	0.42
1:D:45:THR:CG2	5:D:6034:HOH:O	2.56	0.42
1:B:235:ASP:OD2	1:B:290:ARG:NH2	2.53	0.42
1:J:324:ASN:CA	5:J:6034:HOH:O	2.68	0.42
1:D:102:ILE:HD11	5:D:6039:HOH:O	2.19	0.42
1:I:333:ARG:N	1:I:334:PRO:CD	2.83	0.42
1:D:156:PRO:HB3	5:D:6008:HOH:O	2.19	0.42
1:I:181:TYR:CD2	1:I:181:TYR:C	2.93	0.42
1:D:172:VAL:HG21	1:D:198:TRP:CE3	2.54	0.42
1:G:350:THR:HG21	5:G:6036:HOH:O	2.20	0.42
1:B:349:GLU:HB3	5:B:6027:HOH:O	2.18	0.42
1:H:355:LYS:CB	5:H:6009:HOH:O	2.68	0.42
1:H:105:ASN:HD22	1:H:107:ARG:H	1.67	0.42
1:B:142:PRO:HB2	1:B:145:TRP:CG	2.54	0.42
1:J:18:LYS:O	1:J:19:ILE:HD12	2.20	0.41

Continued on next page...

Continued from previous page...

Atom-1	Atom-2	Distance(Å)	Clash(Å)
1:C:105:ASN:ND2	1:C:107:ARG:H	2.17	0.41
1:J:142:PRO:HB2	1:J:145:TRP:CD1	2.55	0.41
1:D:292:LEU:HD23	1:D:298:THR:HB	2.02	0.41
5:B:6034:HOH:O	1:C:8:VAL:CG2	2.54	0.41
1:A:135:LEU:HD23	1:A:142:PRO:HA	2.02	0.41
1:I:308:VAL:HG22	5:I:6041:HOH:O	2.20	0.41
1:G:161:ILE:HD12	1:H:222:GLU:HB3	2.02	0.41
1:A:116:SER:HA	1:A:117:PRO:HD3	1.87	0.41
1:D:123:GLU:CG	5:D:6015:HOH:O	2.64	0.41
1:I:203:GLY:HA2	4:I:6009:ANP:O3'	2.19	0.41
1:B:164:GLU:HG3	1:C:231:VAL:HG22	2.01	0.41
1:D:137:LYS:O	1:D:138:ASP:HB2	2.20	0.41
1:B:136:GLN:HB3	5:B:6018:HOH:O	2.20	0.41
1:I:231:VAL:HG22	1:J:164:GLU:HG3	2.02	0.41
1:C:332:ARG:HH22	3:C:5003:MSL:HG3	1.85	0.41
3:C:5005:MSL:NE	4:E:6005:ANP:O1G	2.54	0.41
3:C:5005:MSL:CE	1:E:297:GLU:OE2	2.69	0.41
1:E:191:GLY:HA2	1:E:198:TRP:CE3	2.56	0.41
1:C:142:PRO:HB2	1:C:145:TRP:CD1	2.56	0.41
1:C:46:ASP:HB3	1:C:49:LYS:HD3	2.03	0.41
1:F:128:ILE:O	1:F:128:ILE:HG13	2.21	0.41
1:D:75:GLN:NE2	5:D:6032:HOH:O	2.50	0.41
1:C:18:LYS:O	1:C:19:ILE:HD12	2.20	0.41
1:G:277:HIS:CD2	1:G:333:ARG:HH11	2.38	0.41
1:G:46:ASP:HB3	1:G:49:LYS:HD3	2.03	0.41
1:C:142:PRO:HB2	1:C:145:TRP:CG	2.56	0.41
1:J:302:ASN:HA	5:J:6028:HOH:O	2.21	0.41
1:A:222:GLU:HB3	1:D:161:ILE:HD12	2.01	0.41
1:B:24:ILE:HD11	1:B:89:LEU:HD22	2.02	0.41
1:B:236:PRO:HB3	1:B:335:ALA:HB1	2.03	0.41
1:F:284:TYR:CD2	1:F:343:VAL:HG22	2.56	0.41
1:B:248:ALA:HB1	1:B:338:MET:HE3	2.03	0.41
1:I:248:ALA:HB1	1:I:338:MET:HE1	2.04	0.41
1:I:223:ARG:HH11	1:I:223:ARG:HD2	1.71	0.41
3:C:5007:MSL:HB2	1:F:249:HIS:HE1	1.84	0.40
1:J:277:HIS:CD2	1:J:333:ARG:HH11	2.39	0.40
1:D:135:LEU:HD23	1:D:142:PRO:HA	2.03	0.40
1:J:46:ASP:HB3	1:J:49:LYS:HD3	2.02	0.40
1:A:233:THR:HB	1:A:235:ASP:H	1.86	0.40
1:H:211:GLY:HA2	1:H:340:PRO:HB2	2.02	0.40
1:E:292:LEU:HD23	1:E:298:THR:HB	2.02	0.40
1:F:192:GLU:HB3	1:F:197:GLN:HE21	1.87	0.40

Continued on next page...

Continued from previous page...

Atom-1	Atom-2	Distance(Å)	Clash(Å)
1:G:292:LEU:HD23	1:G:298:THR:HB	2.03	0.40
1:G:58:SER:HA	1:G:63:ALA:O	2.21	0.40
1:B:50:LEU:HD11	1:B:77:ILE:HD11	2.03	0.40
1:A:127:GLY:HA3	4:A:6001:ANP:O4'	2.21	0.40
1:A:308:VAL:N	5:A:6028:HOH:O	2.48	0.40
1:D:154:GLN:HE22	1:D:244:ASN:N	1.96	0.40
1:F:105:ASN:HD22	1:F:107:ARG:H	1.68	0.40
5:H:6015:HOH:O	1:I:3:CYS:HA	2.21	0.40
1:H:105:ASN:ND2	1:H:107:ARG:H	2.20	0.40
1:A:113:ILE:HD13	1:A:349:GLU:HG3	2.02	0.40
1:H:248:ALA:O	1:H:249:HIS:C	2.60	0.40
1:F:323:GLN:HG2	5:F:6035:HOH:O	2.22	0.40
1:C:181:TYR:CD2	1:C:181:TYR:C	2.95	0.40

There are no symmetry-related clashes.

5.3 Torsion angles

5.3.1 Protein backbone ⓘ

In the following table, the Percentiles column shows the percent Ramachandran outliers of the chain as a percentile score with respect to all X-ray entries followed by that with respect to entries of similar resolution. The Analysed column shows the number of residues for which the backbone conformation was analysed, and the total number of residues.

Mol	Chain	Analysed	Favoured	Allowed	Outliers	Percentiles	
1	A	351/356 (99%)	331 (94%)	20 (6%)	0	100	100
1	B	351/356 (99%)	331 (94%)	20 (6%)	0	100	100
1	C	351/356 (99%)	334 (95%)	16 (5%)	1 (0%)	50	92
1	D	351/356 (99%)	333 (95%)	18 (5%)	0	100	100
1	E	351/356 (99%)	328 (93%)	23 (7%)	0	100	100
1	F	351/356 (99%)	331 (94%)	20 (6%)	0	100	100
1	G	351/356 (99%)	332 (95%)	18 (5%)	1 (0%)	50	92
1	H	351/356 (99%)	334 (95%)	17 (5%)	0	100	100
1	I	351/356 (99%)	330 (94%)	21 (6%)	0	100	100
1	J	351/356 (99%)	332 (95%)	19 (5%)	0	100	100
All	All	3510/3560 (99%)	3316 (94%)	192 (6%)	2 (0%)	59	96

All (2) Ramachandran outliers are listed below:

Mol	Chain	Res	Type
1	G	84	ARG
1	C	138	ASP

5.3.2 Protein sidechains ⓘ

In the following table, the Percentiles column shows the percent sidechain outliers of the chain as a percentile score with respect to all X-ray entries followed by that with respect to entries of similar resolution. The Analysed column shows the number of residues for which the sidechain conformation was analysed, and the total number of residues.

Mol	Chain	Analysed	Rotameric	Outliers	Percentiles	
1	A	288/290 (99%)	261 (91%)	27 (9%)	13	52
1	B	288/290 (99%)	264 (92%)	24 (8%)	16	59
1	C	288/290 (99%)	262 (91%)	26 (9%)	14	55
1	D	288/290 (99%)	262 (91%)	26 (9%)	14	55
1	E	288/290 (99%)	262 (91%)	26 (9%)	14	55
1	F	288/290 (99%)	262 (91%)	26 (9%)	14	55
1	G	288/290 (99%)	262 (91%)	26 (9%)	14	55
1	H	288/290 (99%)	262 (91%)	26 (9%)	14	55
1	I	288/290 (99%)	264 (92%)	24 (8%)	16	59
1	J	288/290 (99%)	261 (91%)	27 (9%)	13	52
All	All	2880/2900 (99%)	2622 (91%)	258 (9%)	14	55

All (258) residues with a non-rotameric sidechain are listed below:

Mol	Chain	Res	Type
1	A	3	CYS
1	A	15	THR
1	A	19	ILE
1	A	45	THR
1	A	66	GLU
1	A	104	THR
1	A	105	ASN
1	A	109	SER
1	A	112	LYS
1	A	123	GLU
1	A	128	ILE

Continued on next page...

Continued from previous page...

Mol	Chain	Res	Type
1	A	143	LEU
1	A	147	ILE
1	A	164	GLU
1	A	176	TYR
1	A	201	GLN
1	A	232	VAL
1	A	233	THR
1	A	288	ASN
1	A	289	GLU
1	A	301	ILE
1	A	321	THR
1	A	338	MET
1	A	344	THR
1	A	349	GLU
1	A	351	THR
1	A	355	LYS
1	B	3	CYS
1	B	15	THR
1	B	19	ILE
1	B	45	THR
1	B	104	THR
1	B	105	ASN
1	B	109	SER
1	B	112	LYS
1	B	123	GLU
1	B	128	ILE
1	B	143	LEU
1	B	147	ILE
1	B	164	GLU
1	B	176	TYR
1	B	201	GLN
1	B	232	VAL
1	B	233	THR
1	B	288	ASN
1	B	289	GLU
1	B	301	ILE
1	B	321	THR
1	B	344	THR
1	B	349	GLU
1	B	351	THR
1	C	3	CYS
1	C	14	ASP

Continued on next page...

Continued from previous page...

Mol	Chain	Res	Type
1	C	15	THR
1	C	19	ILE
1	C	45	THR
1	C	66	GLU
1	C	104	THR
1	C	105	ASN
1	C	112	LYS
1	C	123	GLU
1	C	128	ILE
1	C	143	LEU
1	C	147	ILE
1	C	164	GLU
1	C	176	TYR
1	C	201	GLN
1	C	232	VAL
1	C	233	THR
1	C	288	ASN
1	C	289	GLU
1	C	301	ILE
1	C	321	THR
1	C	338	MET
1	C	344	THR
1	C	349	GLU
1	C	351	THR
1	D	3	CYS
1	D	14	ASP
1	D	15	THR
1	D	19	ILE
1	D	45	THR
1	D	66	GLU
1	D	104	THR
1	D	105	ASN
1	D	109	SER
1	D	112	LYS
1	D	123	GLU
1	D	128	ILE
1	D	143	LEU
1	D	147	ILE
1	D	164	GLU
1	D	176	TYR
1	D	201	GLN
1	D	232	VAL

Continued on next page...

Continued from previous page...

Mol	Chain	Res	Type
1	D	233	THR
1	D	288	ASN
1	D	289	GLU
1	D	301	ILE
1	D	321	THR
1	D	344	THR
1	D	349	GLU
1	D	351	THR
1	E	3	CYS
1	E	14	ASP
1	E	15	THR
1	E	19	ILE
1	E	45	THR
1	E	66	GLU
1	E	104	THR
1	E	105	ASN
1	E	109	SER
1	E	112	LYS
1	E	123	GLU
1	E	128	ILE
1	E	143	LEU
1	E	147	ILE
1	E	164	GLU
1	E	176	TYR
1	E	201	GLN
1	E	232	VAL
1	E	233	THR
1	E	288	ASN
1	E	289	GLU
1	E	301	ILE
1	E	321	THR
1	E	344	THR
1	E	349	GLU
1	E	351	THR
1	F	3	CYS
1	F	14	ASP
1	F	19	ILE
1	F	45	THR
1	F	66	GLU
1	F	104	THR
1	F	105	ASN
1	F	109	SER

Continued on next page...

Continued from previous page...

Mol	Chain	Res	Type
1	F	112	LYS
1	F	123	GLU
1	F	128	ILE
1	F	143	LEU
1	F	147	ILE
1	F	164	GLU
1	F	176	TYR
1	F	201	GLN
1	F	232	VAL
1	F	233	THR
1	F	238	PRO
1	F	288	ASN
1	F	289	GLU
1	F	301	ILE
1	F	321	THR
1	F	344	THR
1	F	349	GLU
1	F	351	THR
1	G	3	CYS
1	G	14	ASP
1	G	15	THR
1	G	19	ILE
1	G	45	THR
1	G	66	GLU
1	G	104	THR
1	G	105	ASN
1	G	109	SER
1	G	112	LYS
1	G	128	ILE
1	G	143	LEU
1	G	147	ILE
1	G	164	GLU
1	G	176	TYR
1	G	201	GLN
1	G	232	VAL
1	G	233	THR
1	G	288	ASN
1	G	289	GLU
1	G	301	ILE
1	G	321	THR
1	G	338	MET
1	G	344	THR

Continued on next page...

Continued from previous page...

Mol	Chain	Res	Type
1	G	349	GLU
1	G	351	THR
1	H	3	CYS
1	H	15	THR
1	H	19	ILE
1	H	45	THR
1	H	66	GLU
1	H	104	THR
1	H	105	ASN
1	H	109	SER
1	H	112	LYS
1	H	123	GLU
1	H	128	ILE
1	H	143	LEU
1	H	147	ILE
1	H	164	GLU
1	H	176	TYR
1	H	201	GLN
1	H	232	VAL
1	H	233	THR
1	H	288	ASN
1	H	289	GLU
1	H	301	ILE
1	H	321	THR
1	H	338	MET
1	H	344	THR
1	H	349	GLU
1	H	351	THR
1	I	3	CYS
1	I	15	THR
1	I	19	ILE
1	I	45	THR
1	I	66	GLU
1	I	104	THR
1	I	105	ASN
1	I	112	LYS
1	I	123	GLU
1	I	128	ILE
1	I	143	LEU
1	I	147	ILE
1	I	164	GLU
1	I	176	TYR

Continued on next page...

Continued from previous page...

Mol	Chain	Res	Type
1	I	201	GLN
1	I	232	VAL
1	I	233	THR
1	I	288	ASN
1	I	289	GLU
1	I	301	ILE
1	I	321	THR
1	I	344	THR
1	I	349	GLU
1	I	351	THR
1	J	3	CYS
1	J	15	THR
1	J	19	ILE
1	J	45	THR
1	J	66	GLU
1	J	104	THR
1	J	105	ASN
1	J	109	SER
1	J	112	LYS
1	J	123	GLU
1	J	128	ILE
1	J	143	LEU
1	J	147	ILE
1	J	164	GLU
1	J	176	TYR
1	J	201	GLN
1	J	232	VAL
1	J	233	THR
1	J	238	PRO
1	J	288	ASN
1	J	289	GLU
1	J	301	ILE
1	J	321	THR
1	J	338	MET
1	J	344	THR
1	J	349	GLU
1	J	351	THR

Some sidechains can be flipped to improve hydrogen bonding and reduce clashes. All (98) such sidechains are listed below:

Mol	Chain	Res	Type
1	A	105	ASN

Continued on next page...

Continued from previous page...

Mol	Chain	Res	Type
1	A	154	GLN
1	A	190	ASN
1	A	197	GLN
1	A	201	GLN
1	A	251	ASN
1	A	277	HIS
1	A	288	ASN
1	A	324	ASN
1	B	105	ASN
1	B	154	GLN
1	B	190	ASN
1	B	197	GLN
1	B	201	GLN
1	B	249	HIS
1	B	251	ASN
1	B	277	HIS
1	B	288	ASN
1	B	324	ASN
1	C	105	ASN
1	C	154	GLN
1	C	190	ASN
1	C	197	GLN
1	C	201	GLN
1	C	277	HIS
1	C	288	ASN
1	C	296	HIS
1	C	324	ASN
1	D	105	ASN
1	D	154	GLN
1	D	190	ASN
1	D	197	GLN
1	D	201	GLN
1	D	277	HIS
1	D	288	ASN
1	D	296	HIS
1	D	324	ASN
1	E	105	ASN
1	E	154	GLN
1	E	190	ASN
1	E	197	GLN
1	E	201	GLN
1	E	251	ASN

Continued on next page...

Continued from previous page...

Mol	Chain	Res	Type
1	E	277	HIS
1	E	288	ASN
1	E	296	HIS
1	E	324	ASN
1	F	105	ASN
1	F	154	GLN
1	F	190	ASN
1	F	197	GLN
1	F	201	GLN
1	F	249	HIS
1	F	251	ASN
1	F	277	HIS
1	F	288	ASN
1	F	296	HIS
1	F	324	ASN
1	G	75	GLN
1	G	105	ASN
1	G	154	GLN
1	G	190	ASN
1	G	197	GLN
1	G	201	GLN
1	G	251	ASN
1	G	277	HIS
1	G	288	ASN
1	G	296	HIS
1	G	324	ASN
1	H	105	ASN
1	H	154	GLN
1	H	190	ASN
1	H	197	GLN
1	H	201	GLN
1	H	251	ASN
1	H	277	HIS
1	H	288	ASN
1	H	296	HIS
1	H	324	ASN
1	I	105	ASN
1	I	154	GLN
1	I	190	ASN
1	I	197	GLN
1	I	201	GLN
1	I	251	ASN

Continued on next page...

Continued from previous page...

Mol	Chain	Res	Type
1	I	277	HIS
1	I	288	ASN
1	I	296	HIS
1	I	324	ASN
1	J	105	ASN
1	J	154	GLN
1	J	190	ASN
1	J	197	GLN
1	J	201	GLN
1	J	277	HIS
1	J	288	ASN
1	J	296	HIS
1	J	324	ASN

5.3.3 RNA ⓘ

There are no RNA chains in this entry.

5.4 Non-standard residues in protein, DNA, RNA chains ⓘ

There are no non-standard protein/DNA/RNA residues in this entry.

5.5 Carbohydrates ⓘ

There are no carbohydrates in this entry.

5.6 Ligand geometry ⓘ

Of 50 ligands modelled in this entry, 30 are monoatomic - leaving 20 for Mogul analysis.

In the following table, the Counts columns list the number of bonds (or angles) for which Mogul statistics could be retrieved, the number of bonds (or angles) that are observed in the model and the number of bonds (or angles) that are defined in the chemical component dictionary. The Link column lists molecule types, if any, to which the group is linked. The Z score for a bond length (or angle) is the number of standard deviations the observed value is removed from the expected value. A bond length (or angle) with $|Z| > 2$ is considered an outlier worth inspection. RMSZ is the root-mean-square of all Z scores of the bond lengths (or angles).

Mol	Type	Chain	Res	Link	Bond lengths			Bond angles		
					Counts	RMSZ	$\# Z > 2$	Counts	RMSZ	$\# Z > 2$
4	ANP	A	6001	2	33,33,33	3.05	13 (39%)	51,52,52	4.35	25 (49%)

Mol	Type	Chain	Res	Link	Bond lengths			Bond angles		
					Counts	RMSZ	# Z > 2	Counts	RMSZ	# Z > 2
4	ANP	B	6002	2	33,33,33	2.98	14 (42%)	51,52,52	4.91	25 (49%)
3	MSL	C	5001	2	10,10,10	3.03	2 (20%)	14,14,14	2.11	4 (28%)
3	MSL	C	5002	2	10,10,10	3.33	1 (10%)	14,14,14	5.21	7 (50%)
3	MSL	C	5003	2	10,10,10	3.24	1 (10%)	14,14,14	2.61	5 (35%)
3	MSL	C	5004	2	10,10,10	3.39	1 (10%)	14,14,14	2.69	3 (21%)
3	MSL	C	5005	2	10,10,10	3.04	1 (10%)	14,14,14	2.82	4 (28%)
3	MSL	C	5006	2	10,10,10	3.39	2 (20%)	14,14,14	2.20	4 (28%)
3	MSL	C	5007	2	10,10,10	3.15	2 (20%)	14,14,14	4.03	7 (50%)
3	MSL	C	5008	2	10,10,10	3.42	1 (10%)	14,14,14	2.93	2 (14%)
3	MSL	C	5009	2	10,10,10	2.98	1 (10%)	14,14,14	2.14	4 (28%)
3	MSL	C	5010	2	10,10,10	3.29	1 (10%)	14,14,14	3.41	7 (50%)
4	ANP	C	6003	2	33,33,33	2.83	12 (36%)	51,52,52	4.95	22 (43%)
4	ANP	D	6004	2	33,33,33	3.18	12 (36%)	51,52,52	4.26	23 (45%)
4	ANP	E	6005	2	33,33,33	3.33	13 (39%)	51,52,52	4.84	25 (49%)
4	ANP	F	6006	2	33,33,33	3.18	16 (48%)	51,52,52	4.10	22 (43%)
4	ANP	G	6007	2	33,33,33	2.86	11 (33%)	51,52,52	4.10	24 (47%)
4	ANP	H	6008	2	33,33,33	2.80	15 (45%)	51,52,52	4.79	23 (45%)
4	ANP	I	6009	2	33,33,33	2.90	12 (36%)	51,52,52	3.96	22 (43%)
4	ANP	J	6010	2	33,33,33	3.53	12 (36%)	51,52,52	4.68	28 (54%)

In the following table, the Chirals column lists the number of chiral outliers, the number of chiral centers analysed, the number of these observed in the model and the number defined in the chemical component dictionary. Similar counts are reported in the Torsion and Rings columns. '-' means no outliers of that kind were identified.

Mol	Type	Chain	Res	Link	Chirals	Torsions	Rings
4	ANP	A	6001	2	2/2/7/8	1/18/38/38	0/1/3/3
4	ANP	B	6002	2	2/2/7/8	2/18/38/38	0/1/3/3
3	MSL	C	5001	2	-	1/10/10/10	0/0/0/0
3	MSL	C	5002	2	-	1/10/10/10	0/0/0/0
3	MSL	C	5003	2	-	1/10/10/10	0/0/0/0
3	MSL	C	5004	2	-	1/10/10/10	0/0/0/0
3	MSL	C	5005	2	-	1/10/10/10	0/0/0/0
3	MSL	C	5006	2	-	1/10/10/10	0/0/0/0
3	MSL	C	5007	2	-	1/10/10/10	0/0/0/0
3	MSL	C	5008	2	-	1/10/10/10	0/0/0/0
3	MSL	C	5009	2	-	1/10/10/10	0/0/0/0
3	MSL	C	5010	2	-	1/10/10/10	0/0/0/0

Continued on next page...

Continued from previous page...

Mol	Type	Chain	Res	Link	Chirals	Torsions	Rings
4	ANP	C	6003	2	2/2/7/8	1/18/38/38	0/1/3/3
4	ANP	D	6004	2	2/2/7/8	1/18/38/38	0/1/3/3
4	ANP	E	6005	2	2/2/7/8	1/18/38/38	0/1/3/3
4	ANP	F	6006	2	2/2/7/8	1/18/38/38	0/1/3/3
4	ANP	G	6007	2	2/2/7/8	1/18/38/38	0/1/3/3
4	ANP	H	6008	2	2/2/7/8	0/18/38/38	0/1/3/3
4	ANP	I	6009	2	2/2/7/8	1/18/38/38	0/1/3/3
4	ANP	J	6010	2	2/2/7/8	1/18/38/38	0/1/3/3

All (143) bond length outliers are listed below:

Mol	Chain	Res	Type	Atoms	Z	Observed(Å)	Ideal(Å)
4	J	6010	ANP	PG-N3B	15.47	1.77	1.64
3	C	5008	MSL	CG-SD	-10.47	1.67	1.79
3	C	5004	MSL	CG-SD	-10.39	1.67	1.79
4	E	6005	ANP	PG-N3B	10.38	1.73	1.64
3	C	5002	MSL	CG-SD	-10.12	1.67	1.79
3	C	5006	MSL	CG-SD	-10.02	1.67	1.79
3	C	5003	MSL	CG-SD	-9.89	1.67	1.79
3	C	5010	MSL	CG-SD	-9.87	1.67	1.79
3	C	5005	MSL	CG-SD	-9.30	1.68	1.79
3	C	5007	MSL	CG-SD	-9.28	1.68	1.79
3	C	5009	MSL	CG-SD	-9.03	1.68	1.79
3	C	5001	MSL	CG-SD	-8.87	1.68	1.79
4	H	6008	ANP	PG-N3B	8.58	1.71	1.64
4	A	6001	ANP	PB-N3B	-8.48	1.56	1.64
4	D	6004	ANP	PG-N3B	8.41	1.71	1.64
4	G	6007	ANP	PB-N3B	-8.17	1.57	1.64
4	B	6002	ANP	PG-N3B	7.93	1.71	1.64
4	D	6004	ANP	PB-O3A	7.32	1.69	1.59
4	A	6001	ANP	PG-N3B	7.20	1.70	1.64
4	I	6009	ANP	PG-N3B	7.13	1.70	1.64
4	C	6003	ANP	PB-N3B	-6.93	1.58	1.64
4	E	6005	ANP	PB-O3A	6.65	1.68	1.59
4	F	6006	ANP	PB-N3B	-6.57	1.58	1.64
4	F	6006	ANP	PG-O2G	6.11	1.73	1.55
4	E	6005	ANP	PA-O3A	6.09	1.70	1.59
4	F	6006	ANP	PB-O3A	6.08	1.67	1.59
4	C	6003	ANP	PG-N3B	6.08	1.69	1.64
4	I	6009	ANP	PB-N3B	-6.01	1.59	1.64

Continued on next page...

Continued from previous page...

Mol	Chain	Res	Type	Atoms	Z	Observed(Å)	Ideal(Å)
4	H	6008	ANP	C5'-C4'	-6.01	1.32	1.51
4	G	6007	ANP	PG-N3B	5.84	1.69	1.64
4	F	6006	ANP	PA-O3A	5.83	1.70	1.59
4	F	6006	ANP	C5'-C4'	-5.82	1.32	1.51
4	G	6007	ANP	C5'-C4'	-5.79	1.32	1.51
4	A	6001	ANP	C5'-C4'	-5.73	1.33	1.51
4	D	6004	ANP	C5'-C4'	-5.73	1.33	1.51
4	I	6009	ANP	C5'-C4'	-5.59	1.33	1.51
4	E	6005	ANP	C5'-C4'	-5.57	1.33	1.51
4	B	6002	ANP	C4-N3	5.49	1.44	1.35
4	C	6003	ANP	C4-N3	5.32	1.43	1.35
4	G	6007	ANP	O2'-C2'	5.28	1.55	1.43
4	B	6002	ANP	C5'-C4'	-5.18	1.34	1.51
4	B	6002	ANP	O2'-C2'	5.17	1.55	1.43
4	D	6004	ANP	PA-O3A	5.10	1.69	1.59
4	C	6003	ANP	C1'-N9	-5.08	1.32	1.48
4	A	6001	ANP	C1'-N9	-5.07	1.32	1.48
4	D	6004	ANP	C1'-N9	-5.01	1.33	1.48
4	I	6009	ANP	O2'-C2'	5.01	1.55	1.43
4	E	6005	ANP	C1'-N9	-5.00	1.33	1.48
4	B	6002	ANP	C1'-N9	-4.99	1.33	1.48
4	J	6010	ANP	C5'-C4'	-4.98	1.35	1.51
4	C	6003	ANP	C5'-C4'	-4.93	1.35	1.51
4	J	6010	ANP	C1'-N9	-4.89	1.33	1.48
4	I	6009	ANP	C1'-N9	-4.88	1.33	1.48
4	H	6008	ANP	C1'-N9	-4.87	1.33	1.48
4	G	6007	ANP	C1'-N9	-4.82	1.33	1.48
4	A	6001	ANP	O2'-C2'	4.74	1.54	1.43
4	C	6003	ANP	O2'-C2'	4.73	1.54	1.43
4	B	6002	ANP	PB-N3B	-4.72	1.60	1.64
4	E	6005	ANP	O2'-C2'	4.70	1.54	1.43
4	D	6004	ANP	C4-N3	4.66	1.42	1.35
4	D	6004	ANP	O2'-C2'	4.64	1.54	1.43
4	I	6009	ANP	C4-N3	4.62	1.42	1.35
4	F	6006	ANP	C4-N3	4.60	1.42	1.35
4	H	6008	ANP	O2'-C2'	4.59	1.54	1.43
4	F	6006	ANP	O2'-C2'	4.58	1.54	1.43
4	J	6010	ANP	O2'-C2'	4.54	1.53	1.43
4	F	6006	ANP	C1'-N9	-4.49	1.34	1.48
4	J	6010	ANP	C4-N3	4.37	1.42	1.35
4	J	6010	ANP	C2-N1	4.32	1.42	1.33
4	E	6005	ANP	PG-O1G	4.09	1.51	1.46

Continued on next page...

Continued from previous page...

Mol	Chain	Res	Type	Atoms	Z	Observed(Å)	Ideal(Å)
4	A	6001	ANP	C4-N3	4.03	1.41	1.35
4	C	6003	ANP	C2-N1	3.99	1.41	1.33
4	A	6001	ANP	PG-O1G	3.97	1.51	1.46
4	D	6004	ANP	PB-O1B	3.95	1.51	1.46
4	I	6009	ANP	PB-O1B	3.93	1.51	1.46
4	E	6005	ANP	C4-N3	3.91	1.41	1.35
4	F	6006	ANP	PG-N3B	3.89	1.67	1.64
4	D	6004	ANP	C2-N1	3.79	1.41	1.33
4	G	6007	ANP	PB-O2B	-3.70	1.44	1.55
4	G	6007	ANP	C2-N1	3.67	1.41	1.33
4	I	6009	ANP	C2-N1	3.67	1.41	1.33
4	H	6008	ANP	C2-N1	3.66	1.41	1.33
4	A	6001	ANP	C8-N7	-3.64	1.27	1.34
4	B	6002	ANP	PB-O2B	-3.64	1.44	1.55
4	A	6001	ANP	C2-N1	3.62	1.41	1.33
4	B	6002	ANP	C2-N1	3.57	1.40	1.33
4	E	6005	ANP	C8-N7	-3.53	1.27	1.34
4	E	6005	ANP	C2-N1	3.49	1.40	1.33
4	I	6009	ANP	C8-N7	-3.48	1.27	1.34
4	G	6007	ANP	C4-N3	3.47	1.40	1.35
4	C	6003	ANP	C8-N7	-3.39	1.27	1.34
4	F	6006	ANP	C2-N1	3.35	1.40	1.33
4	D	6004	ANP	C8-N7	-3.32	1.28	1.34
4	H	6008	ANP	PB-O1B	3.30	1.50	1.46
4	H	6008	ANP	PG-O3G	-3.26	1.45	1.55
4	B	6002	ANP	PB-O3A	3.22	1.63	1.59
4	I	6009	ANP	PG-O1G	3.15	1.50	1.46
4	J	6010	ANP	C8-N7	-3.15	1.28	1.34
4	B	6002	ANP	PB-O1B	3.14	1.50	1.46
4	H	6008	ANP	PB-O2B	-3.13	1.46	1.55
4	G	6007	ANP	C8-N7	-3.13	1.28	1.34
4	B	6002	ANP	C8-N7	-3.10	1.28	1.34
4	F	6006	ANP	C8-N7	-3.09	1.28	1.34
4	D	6004	ANP	PB-N3B	-2.96	1.61	1.64
3	C	5006	MSL	CB-CG	2.91	1.55	1.52
4	C	6003	ANP	PB-O2B	-2.89	1.46	1.55
3	C	5001	MSL	CB-CG	2.89	1.55	1.52
4	E	6005	ANP	PB-O1B	2.83	1.49	1.46
4	H	6008	ANP	C8-N7	-2.78	1.29	1.34
4	F	6006	ANP	PG-O3G	2.71	1.63	1.55
4	A	6001	ANP	PB-O2B	-2.70	1.47	1.55
4	H	6008	ANP	C4-N3	2.69	1.39	1.35

Continued on next page...

Continued from previous page...

Mol	Chain	Res	Type	Atoms	Z	Observed(Å)	Ideal(Å)
4	C	6003	ANP	O5'-C5'	2.63	1.55	1.44
4	I	6009	ANP	C2'-C3'	2.62	1.60	1.53
4	B	6002	ANP	O5'-C5'	2.60	1.55	1.44
4	H	6008	ANP	O5'-C5'	2.58	1.55	1.44
4	H	6008	ANP	C8-N9	2.56	1.40	1.36
4	J	6010	ANP	O5'-C5'	2.50	1.55	1.44
4	H	6008	ANP	O3'-C3'	-2.45	1.37	1.43
4	J	6010	ANP	C2'-C3'	2.44	1.60	1.53
4	J	6010	ANP	PB-O2B	-2.39	1.48	1.55
4	F	6006	ANP	PG-O1G	2.39	1.49	1.46
4	C	6003	ANP	PA-O5'	2.37	1.69	1.59
4	I	6009	ANP	PB-O2B	-2.34	1.48	1.55
4	J	6010	ANP	PA-O5'	2.32	1.69	1.59
4	C	6003	ANP	C2-N3	2.25	1.36	1.32
3	C	5007	MSL	CB-CG	2.21	1.54	1.52
4	H	6008	ANP	C2'-C3'	2.18	1.59	1.53
4	E	6005	ANP	PB-O2B	-2.18	1.48	1.55
4	J	6010	ANP	PB-O1B	2.15	1.48	1.46
4	D	6004	ANP	O5'-C5'	2.15	1.53	1.44
4	B	6002	ANP	C8-N9	2.15	1.39	1.36
4	F	6006	ANP	PB-O1B	2.13	1.48	1.46
4	A	6001	ANP	O5'-C5'	2.13	1.53	1.44
4	F	6006	ANP	O5'-C5'	2.11	1.53	1.44
4	A	6001	ANP	O3'-C3'	-2.10	1.37	1.43
4	B	6002	ANP	O3'-C3'	-2.10	1.37	1.43
4	G	6007	ANP	C2'-C3'	2.09	1.59	1.53
4	F	6006	ANP	PA-O1A	2.09	1.59	1.51
4	A	6001	ANP	PA-O2A	-2.04	1.45	1.55
4	H	6008	ANP	PA-O5'	2.03	1.68	1.59
4	E	6005	ANP	C2'-C3'	2.01	1.59	1.53
4	G	6007	ANP	PG-O1G	2.01	1.48	1.46

All (286) bond angle outliers are listed below:

Mol	Chain	Res	Type	Atoms	Z	Observed(°)	Ideal(°)
4	B	6002	ANP	O4'-C1'-N9	22.95	129.79	108.44
4	J	6010	ANP	O4'-C1'-N9	22.76	129.61	108.44
4	C	6003	ANP	O4'-C1'-N9	21.73	128.66	108.44
4	H	6008	ANP	O4'-C1'-N9	20.85	127.83	108.44
4	E	6005	ANP	O4'-C1'-N9	20.19	127.22	108.44
4	A	6001	ANP	O4'-C1'-N9	20.15	127.18	108.44
4	F	6006	ANP	O4'-C1'-N9	17.54	124.75	108.44

Continued on next page...

Continued from previous page...

Mol	Chain	Res	Type	Atoms	Z	Observed(°)	Ideal(°)
4	G	6007	ANP	O4'-C1'-N9	17.28	124.51	108.44
4	D	6004	ANP	O4'-C1'-N9	17.14	124.39	108.44
4	B	6002	ANP	C4'-O4'-C1'	-16.18	92.17	109.75
4	I	6009	ANP	O4'-C1'-N9	15.89	123.22	108.44
4	E	6005	ANP	C4'-O4'-C1'	-15.41	93.02	109.75
3	C	5002	MSL	OE-SD-CG	15.17	119.32	108.25
4	D	6004	ANP	C4'-O4'-C1'	-14.62	93.87	109.75
4	H	6008	ANP	C4'-O4'-C1'	-14.44	94.06	109.75
4	C	6003	ANP	C4'-O4'-C1'	-14.41	94.10	109.75
4	A	6001	ANP	C4'-O4'-C1'	-13.56	95.02	109.75
4	E	6005	ANP	C2'-C3'-C4'	-11.52	79.70	102.65
4	C	6003	ANP	PB-N3B-PG	11.38	149.22	130.07
4	J	6010	ANP	C4'-O4'-C1'	-11.11	97.68	109.75
4	H	6008	ANP	C2'-C3'-C4'	-11.06	80.62	102.65
4	G	6007	ANP	C4'-O4'-C1'	-11.04	97.76	109.75
4	C	6003	ANP	C2'-C3'-C4'	-10.78	81.18	102.65
4	I	6009	ANP	C4'-O4'-C1'	-10.33	98.53	109.75
4	J	6010	ANP	C2'-C3'-C4'	-10.27	82.19	102.65
4	F	6006	ANP	C4'-O4'-C1'	-10.18	98.69	109.75
4	D	6004	ANP	C2'-C3'-C4'	-9.97	82.79	102.65
3	C	5007	MSL	OE-SD-CG	9.91	115.49	108.25
3	C	5010	MSL	OE-SD-CG	-9.79	101.12	108.25
3	C	5008	MSL	OE-SD-NE	-9.72	109.41	121.03
3	C	5002	MSL	OE-SD-NE	-9.36	109.83	121.03
4	B	6002	ANP	C2'-C3'-C4'	-9.08	84.57	102.65
4	F	6006	ANP	C2'-C3'-C4'	-8.81	85.11	102.65
3	C	5005	MSL	OE-SD-NE	-8.73	110.58	121.03
4	I	6009	ANP	C2'-C3'-C4'	-8.60	85.51	102.65
4	E	6005	ANP	O1G-PG-N3B	8.52	124.69	111.83
4	A	6001	ANP	C2'-C3'-C4'	-8.20	86.32	102.65
3	C	5004	MSL	OE-SD-NE	-8.17	111.25	121.03
4	F	6006	ANP	PB-N3B-PG	7.86	143.29	130.07
4	G	6007	ANP	PB-N3B-PG	7.86	143.29	130.07
4	J	6010	ANP	C8-N9-C4	-7.38	101.26	106.90
4	G	6007	ANP	C2'-C3'-C4'	-7.28	88.14	102.65
3	C	5007	MSL	OE-SD-CE	-7.03	97.94	108.84
4	C	6003	ANP	C8-N9-C4	-7.02	101.54	106.90
4	G	6007	ANP	C8-N9-C4	-7.00	101.56	106.90
4	E	6005	ANP	PB-N3B-PG	6.86	141.62	130.07
4	F	6006	ANP	C8-N9-C4	-6.85	101.67	106.90
3	C	5007	MSL	OE-SD-NE	-6.79	112.91	121.03
4	H	6008	ANP	C8-N9-C4	-6.68	101.80	106.90

Continued on next page...

Continued from previous page...

Mol	Chain	Res	Type	Atoms	Z	Observed(°)	Ideal(°)
4	H	6008	ANP	O2'-C2'-C3'	-6.56	90.51	111.83
4	I	6009	ANP	C8-N9-C4	-6.43	101.99	106.90
4	A	6001	ANP	C8-N9-C4	-6.41	102.00	106.90
4	H	6008	ANP	C5-C6-N6	6.37	135.11	120.72
4	I	6009	ANP	C2'-C1'-N9	6.16	129.08	113.27
3	C	5006	MSL	OE-SD-NE	-6.01	113.84	121.03
4	B	6002	ANP	PB-N3B-PG	5.93	140.05	130.07
4	F	6006	ANP	C5'-C4'-C3'	5.86	138.70	115.21
4	H	6008	ANP	N6-C6-N1	-5.84	107.90	119.36
4	D	6004	ANP	C8-N9-C4	-5.66	102.58	106.90
4	J	6010	ANP	C5'-C4'-C3'	5.63	137.77	115.21
3	C	5001	MSL	OE-SD-NE	-5.50	114.45	121.03
4	B	6002	ANP	O2'-C2'-C3'	-5.49	93.98	111.83
4	E	6005	ANP	C8-N9-C4	-5.45	102.74	106.90
4	D	6004	ANP	C2'-C1'-N9	5.41	127.15	113.27
4	F	6006	ANP	C2'-C1'-N9	5.37	127.04	113.27
4	I	6009	ANP	O2G-PG-N3B	-5.36	92.06	106.61
4	B	6002	ANP	C8-N9-C4	-5.34	102.83	106.90
4	I	6009	ANP	C5'-C4'-C3'	5.29	136.41	115.21
4	D	6004	ANP	C5'-C4'-C3'	5.29	136.39	115.21
3	C	5003	MSL	C-CA-N	5.21	117.99	109.36
4	C	6003	ANP	C5'-C4'-C3'	5.19	136.02	115.21
4	H	6008	ANP	C2'-C1'-N9	5.18	126.57	113.27
4	E	6005	ANP	O2'-C2'-C3'	-5.17	95.00	111.83
4	E	6005	ANP	C5'-C4'-C3'	5.15	135.84	115.21
4	I	6009	ANP	PB-N3B-PG	5.14	138.72	130.07
4	I	6009	ANP	O3A-PB-N3B	5.10	120.75	106.59
3	C	5002	MSL	CG-CB-CA	5.09	117.11	112.12
4	E	6005	ANP	O2G-PG-N3B	-5.07	92.84	106.61
4	G	6007	ANP	C5'-C4'-C3'	5.03	135.36	115.21
4	B	6002	ANP	O3A-PA-O5'	5.00	125.77	103.41
3	C	5010	MSL	OE-SD-NE	-5.00	115.05	121.03
4	G	6007	ANP	C2'-C1'-N9	4.96	125.99	113.27
4	J	6010	ANP	PB-N3B-PG	4.96	138.41	130.07
4	G	6007	ANP	O1G-PG-N3B	4.90	119.23	111.83
3	C	5003	MSL	OE-SD-CE	-4.88	101.27	108.84
3	C	5009	MSL	OE-SD-CG	4.85	111.80	108.25
4	F	6006	ANP	O1G-PG-N3B	4.79	119.06	111.83
4	G	6007	ANP	O2G-PG-N3B	-4.78	93.62	106.61
4	D	6004	ANP	O1B-PB-N3B	-4.77	104.62	111.83
3	C	5003	MSL	OE-SD-NE	-4.77	115.33	121.03
4	A	6001	ANP	O2'-C2'-C3'	-4.75	96.37	111.83

Continued on next page...

Continued from previous page...

Mol	Chain	Res	Type	Atoms	Z	Observed(°)	Ideal(°)
4	D	6004	ANP	O3A-PB-N3B	4.73	119.70	106.59
4	F	6006	ANP	O2G-PG-N3B	-4.68	93.90	106.61
4	C	6003	ANP	O2'-C2'-C3'	-4.67	96.64	111.83
4	H	6008	ANP	O3A-PB-N3B	4.61	119.39	106.59
4	C	6003	ANP	O2G-PG-N3B	-4.60	94.12	106.61
4	B	6002	ANP	C4-C5-N7	4.59	113.46	109.52
4	F	6006	ANP	C4-C5-N7	4.58	113.44	109.52
4	E	6005	ANP	C2'-C1'-N9	4.57	124.99	113.27
4	A	6001	ANP	C5'-C4'-C3'	4.56	133.49	115.21
4	A	6001	ANP	C4-C5-N7	4.55	113.42	109.52
4	B	6002	ANP	O5'-PA-O1A	-4.53	91.64	109.37
4	H	6008	ANP	C5'-C4'-C3'	4.52	133.33	115.21
4	H	6008	ANP	O2B-PB-O3A	-4.51	83.74	105.14
4	H	6008	ANP	O4'-C4'-C5'	4.50	125.43	109.36
4	B	6002	ANP	C5'-C4'-C3'	4.45	133.06	115.21
4	G	6007	ANP	C5-C6-N6	4.35	130.56	120.72
4	I	6009	ANP	O2B-PB-O1B	4.31	119.84	109.89
4	I	6009	ANP	C4-C5-N7	4.29	113.20	109.52
4	C	6003	ANP	O1G-PG-N3B	4.29	118.31	111.83
4	J	6010	ANP	C4-C5-N7	4.27	113.18	109.52
4	B	6002	ANP	O3A-PB-N3B	4.22	118.30	106.59
4	D	6004	ANP	O2'-C2'-C3'	-4.20	98.16	111.83
4	E	6005	ANP	C4-C5-N7	4.17	113.09	109.52
4	J	6010	ANP	C2'-C1'-N9	4.17	123.96	113.27
4	G	6007	ANP	O2'-C2'-C3'	-4.12	98.42	111.83
4	B	6002	ANP	C1'-N9-C4	4.10	133.72	126.64
4	D	6004	ANP	C5-C6-N6	4.09	129.97	120.72
4	A	6001	ANP	O1B-PB-N3B	-4.09	105.64	111.83
3	C	5009	MSL	OE-SD-NE	-4.09	116.14	121.03
4	H	6008	ANP	O3G-PG-O1G	-4.06	103.17	113.60
4	H	6008	ANP	PB-N3B-PG	4.06	136.89	130.07
4	C	6003	ANP	O4'-C4'-C5'	4.05	123.83	109.36
4	B	6002	ANP	O2G-PG-N3B	-4.05	95.62	106.61
4	J	6010	ANP	O3G-PG-N3B	4.02	117.52	106.61
4	A	6001	ANP	O3A-PA-O5'	3.99	121.27	103.41
4	B	6002	ANP	O4'-C4'-C5'	3.99	123.61	109.36
4	C	6003	ANP	C1'-N9-C4	3.99	133.53	126.64
4	A	6001	ANP	C5-C6-N6	3.99	129.73	120.72
4	C	6003	ANP	C2'-C1'-N9	3.96	123.42	113.27
4	J	6010	ANP	C5-C6-N6	3.92	129.57	120.72
4	C	6003	ANP	C5-C6-N6	3.92	129.57	120.72
4	A	6001	ANP	C2'-C1'-N9	3.90	123.27	113.27

Continued on next page...

Continued from previous page...

Mol	Chain	Res	Type	Atoms	Z	Observed(°)	Ideal(°)
4	E	6005	ANP	O3A-PA-O5'	3.88	120.75	103.41
4	G	6007	ANP	C4-C5-N7	3.87	112.84	109.52
4	J	6010	ANP	C1'-N9-C4	3.86	133.30	126.64
4	E	6005	ANP	C5-C6-N6	3.85	129.43	120.72
4	C	6003	ANP	O3'-C3'-C4'	3.81	122.31	111.08
4	F	6006	ANP	C5-C6-N6	3.78	129.27	120.72
4	C	6003	ANP	O2B-PB-O1B	3.73	118.51	109.89
4	I	6009	ANP	O1G-PG-N3B	3.71	117.43	111.83
4	B	6002	ANP	O3G-PG-N3B	3.70	116.66	106.61
4	D	6004	ANP	O4'-C4'-C5'	3.68	122.50	109.36
4	A	6001	ANP	O5'-PA-O1A	-3.67	95.00	109.37
4	D	6004	ANP	PB-N3B-PG	3.65	136.22	130.07
4	A	6001	ANP	O4'-C4'-C5'	3.62	122.27	109.36
3	C	5004	MSL	OE-SD-CE	-3.59	103.27	108.84
3	C	5007	MSL	CG-CB-CA	3.59	115.64	112.12
4	H	6008	ANP	N3-C2-N1	3.59	131.70	128.71
4	J	6010	ANP	O4'-C4'-C5'	3.58	122.14	109.36
4	A	6001	ANP	O2G-PG-N3B	-3.58	96.89	106.61
4	I	6009	ANP	C5-C6-N6	3.58	128.81	120.72
4	J	6010	ANP	O3A-PB-N3B	3.57	116.50	106.59
4	J	6010	ANP	O2G-PG-N3B	-3.56	96.95	106.61
4	I	6009	ANP	O3G-PG-N3B	3.54	116.23	106.61
3	C	5008	MSL	C-CA-N	3.54	115.22	109.36
4	I	6009	ANP	O2'-C2'-C3'	-3.53	100.34	111.83
4	C	6003	ANP	N6-C6-N1	-3.53	112.44	119.36
4	B	6002	ANP	O3'-C3'-C4'	3.51	121.41	111.08
4	J	6010	ANP	O3'-C3'-C4'	3.51	121.41	111.08
4	E	6005	ANP	O4'-C4'-C5'	3.50	121.86	109.36
4	I	6009	ANP	O4'-C4'-C5'	3.50	121.84	109.36
4	F	6006	ANP	O3'-C3'-C4'	3.49	121.36	111.08
4	D	6004	ANP	C4-C5-N7	3.47	112.49	109.52
4	J	6010	ANP	O2B-PB-O1B	3.45	117.85	109.89
4	E	6005	ANP	O3'-C3'-C4'	3.42	121.16	111.08
4	E	6005	ANP	O5'-PA-O1A	-3.38	96.15	109.37
4	G	6007	ANP	O3A-PA-O5'	3.37	118.47	103.41
4	F	6006	ANP	O2'-C2'-C3'	-3.35	100.93	111.83
3	C	5005	MSL	C-CA-N	3.34	114.90	109.36
4	J	6010	ANP	O5'-PA-O1A	-3.30	96.45	109.37
4	J	6010	ANP	O2'-C2'-C3'	-3.29	101.14	111.83
4	J	6010	ANP	O3A-PA-O5'	3.28	118.06	103.41
4	H	6008	ANP	O2'-C2'-C1'	-3.27	101.35	111.23
4	E	6005	ANP	PA-O3A-PB	-3.25	120.69	131.81

Continued on next page...

Continued from previous page...

Mol	Chain	Res	Type	Atoms	Z	Observed(°)	Ideal(°)
4	F	6006	ANP	O5'-PA-O1A	-3.24	96.67	109.37
4	G	6007	ANP	O3'-C3'-C4'	3.22	120.58	111.08
4	H	6008	ANP	O2B-PB-O1B	3.22	117.31	109.89
4	J	6010	ANP	O3G-PG-O1G	-3.20	105.38	113.60
4	F	6006	ANP	O1B-PB-N3B	-3.20	106.99	111.83
4	C	6003	ANP	O2G-PG-O1G	-3.20	105.38	113.60
3	C	5004	MSL	OE-SD-CG	3.19	110.58	108.25
3	C	5005	MSL	OE-SD-CG	-3.16	105.95	108.25
4	D	6004	ANP	N6-C6-N1	-3.11	113.25	119.36
4	B	6002	ANP	N3-C4-N9	3.11	131.05	125.43
3	C	5002	MSL	OXT-C-CA	3.10	123.84	116.88
4	D	6004	ANP	O5'-PA-O1A	-3.10	97.24	109.37
4	G	6007	ANP	O4'-C4'-C5'	3.09	120.38	109.36
4	G	6007	ANP	O3G-PG-N3B	3.08	114.97	106.61
4	D	6004	ANP	PA-O3A-PB	-3.02	121.50	131.81
4	G	6007	ANP	O3G-PG-O1G	-3.01	105.87	113.60
3	C	5002	MSL	C-CA-N	2.99	114.32	109.36
4	B	6002	ANP	C5-C6-N6	2.98	127.45	120.72
4	C	6003	ANP	C4-C5-N7	2.92	112.02	109.52
4	J	6010	ANP	O4'-C4'-C3'	-2.91	99.27	105.17
4	B	6002	ANP	O2B-PB-O1B	2.90	116.59	109.89
4	C	6003	ANP	O4'-C4'-C3'	-2.90	99.30	105.17
4	A	6001	ANP	O3G-PG-N3B	2.89	114.46	106.61
3	C	5006	MSL	OE-SD-CG	2.89	110.36	108.25
3	C	5006	MSL	C-CA-N	2.88	114.13	109.36
4	A	6001	ANP	O3A-PB-N3B	2.87	114.56	106.59
3	C	5003	MSL	CE-SD-CG	2.84	117.21	105.58
3	C	5010	MSL	CG-CB-CA	2.81	114.88	112.12
3	C	5009	MSL	OE-SD-CE	-2.80	104.50	108.84
4	H	6008	ANP	O3'-C3'-C4'	2.79	119.30	111.08
4	B	6002	ANP	O3G-PG-O1G	-2.79	106.44	113.60
4	E	6005	ANP	O1B-PB-N3B	-2.77	107.64	111.83
3	C	5003	MSL	OXT-C-O	-2.77	117.82	124.07
4	I	6009	ANP	N6-C6-N1	-2.76	113.94	119.36
4	C	6003	ANP	N3-C4-N9	2.75	130.39	125.43
4	D	6004	ANP	O1G-PG-N3B	2.75	115.98	111.83
4	I	6009	ANP	O3'-C3'-C2'	2.74	120.76	111.83
4	D	6004	ANP	O3'-C3'-C4'	2.74	119.14	111.08
4	E	6005	ANP	O3A-PB-N3B	2.72	114.14	106.59
4	H	6008	ANP	O2G-PG-O1G	2.71	120.55	113.60
4	H	6008	ANP	O3A-PA-O5'	2.69	115.43	103.41
4	H	6008	ANP	O4'-C4'-C3'	-2.67	99.75	105.17

Continued on next page...

Continued from previous page...

Mol	Chain	Res	Type	Atoms	Z	Observed(°)	Ideal(°)
4	I	6009	ANP	O1B-PB-N3B	-2.64	107.84	111.83
4	F	6006	ANP	O2B-PB-O1B	2.62	115.94	109.89
4	A	6001	ANP	O3'-C3'-C4'	2.62	118.80	111.08
4	E	6005	ANP	N6-C6-N1	-2.61	114.24	119.36
4	J	6010	ANP	O1B-PB-N3B	-2.59	107.92	111.83
4	G	6007	ANP	N6-C6-N1	-2.56	114.33	119.36
4	A	6001	ANP	N6-C6-N1	-2.56	114.34	119.36
4	B	6002	ANP	O4'-C1'-C2'	2.56	110.69	106.77
3	C	5001	MSL	CB-CA-C	2.53	116.97	110.98
4	G	6007	ANP	O5'-PA-O1A	-2.51	99.54	109.37
4	F	6006	ANP	N6-C6-N1	-2.50	114.45	119.36
4	A	6001	ANP	C1'-N9-C4	2.49	130.94	126.64
3	C	5010	MSL	CB-CA-C	2.48	116.84	110.98
3	C	5009	MSL	CG-CB-CA	2.47	114.54	112.12
3	C	5007	MSL	CE-SD-CG	2.46	115.67	105.58
3	C	5002	MSL	OXT-C-O	-2.45	118.53	124.07
4	D	6004	ANP	O2G-PG-N3B	-2.45	99.95	106.61
3	C	5005	MSL	CE-SD-CG	2.44	115.59	105.58
4	B	6002	ANP	C2'-C1'-N9	2.43	119.51	113.27
3	C	5010	MSL	OXT-C-O	-2.43	118.58	124.07
3	C	5010	MSL	OE-SD-CE	2.43	112.60	108.84
3	C	5001	MSL	OE-SD-CG	-2.41	106.49	108.25
4	I	6009	ANP	N3-C4-N9	2.39	129.76	125.43
4	E	6005	ANP	O3G-PG-N3B	2.39	113.11	106.61
4	D	6004	ANP	O4'-C4'-C3'	-2.38	100.35	105.17
4	D	6004	ANP	O3A-PA-O5'	2.37	114.00	103.41
4	G	6007	ANP	O2B-PB-O3A	-2.36	93.95	105.14
4	F	6006	ANP	O2A-PA-O3A	2.35	116.29	105.14
4	A	6001	ANP	O2B-PB-O1B	2.32	115.25	109.89
4	J	6010	ANP	O3'-C3'-C2'	2.32	119.38	111.83
4	D	6004	ANP	O3G-PG-O1G	-2.31	107.67	113.60
3	C	5001	MSL	OXT-C-O	-2.31	118.86	124.07
4	I	6009	ANP	O3'-C3'-C4'	2.29	117.84	111.08
4	E	6005	ANP	O3G-PG-O1G	-2.28	107.75	113.60
4	B	6002	ANP	N6-C6-N1	-2.28	114.90	119.36
4	G	6007	ANP	C1'-N9-C4	2.27	130.56	126.64
4	A	6001	ANP	O1G-PG-N3B	2.27	115.25	111.83
4	A	6001	ANP	PB-N3B-PG	2.26	133.88	130.07
4	A	6001	ANP	O2'-C2'-C1'	-2.23	104.48	111.23
4	C	6003	ANP	O3G-PG-N3B	2.23	112.66	106.61
3	C	5010	MSL	CG-SD-NE	2.21	115.51	106.56
4	J	6010	ANP	N6-C6-N1	-2.20	115.04	119.36

Continued on next page...

Continued from previous page...

Mol	Chain	Res	Type	Atoms	Z	Observed(°)	Ideal(°)
3	C	5007	MSL	C-CA-N	2.19	113.00	109.36
4	B	6002	ANP	C5-C4-N9	-2.18	104.01	107.16
4	G	6007	ANP	N3-C2-N1	2.17	130.52	128.71
4	G	6007	ANP	C2-N3-C4	-2.16	107.87	114.01
4	H	6008	ANP	O3G-PG-N3B	2.16	112.46	106.61
4	B	6002	ANP	O3'-C3'-C2'	2.16	118.85	111.83
4	H	6008	ANP	PA-O3A-PB	-2.15	124.47	131.81
4	F	6006	ANP	O3A-PB-N3B	2.15	112.56	106.59
3	C	5006	MSL	OE-SD-CE	-2.15	105.51	108.84
4	E	6005	ANP	O3G-PG-O2G	-2.14	101.51	107.66
4	E	6005	ANP	C1'-N9-C4	2.13	130.31	126.64
3	C	5002	MSL	CB-CA-C	2.12	116.00	110.98
4	A	6001	ANP	O3'-C3'-C2'	2.12	118.73	111.83
4	G	6007	ANP	PA-O3A-PB	-2.11	124.59	131.81
3	C	5007	MSL	OXT-C-O	-2.11	119.30	124.07
4	J	6010	ANP	O2B-PB-O3A	-2.06	95.38	105.14
4	E	6005	ANP	O4'-C4'-C3'	-2.05	101.01	105.17
4	A	6001	ANP	O2B-PB-N3B	2.05	112.18	106.61
4	D	6004	ANP	O2A-PA-O3A	2.05	114.85	105.14
4	F	6006	ANP	C1'-N9-C4	2.03	130.15	126.64
4	J	6010	ANP	N3-C4-N9	2.03	129.10	125.43
4	J	6010	ANP	N7-C8-N9	2.03	120.10	114.36
4	J	6010	ANP	O2B-PB-N3B	2.02	112.09	106.61
4	C	6003	ANP	O3A-PA-O5'	2.02	112.44	103.41
4	F	6006	ANP	O4'-C4'-C5'	2.02	116.56	109.36
4	I	6009	ANP	O4'-C4'-C3'	-2.01	101.09	105.17
4	F	6006	ANP	N3-C4-N9	2.00	129.04	125.43

All (20) chirality outliers are listed below:

Mol	Chain	Res	Type	Atom
4	J	6010	ANP	C4'
4	J	6010	ANP	C1'
4	E	6005	ANP	C4'
4	E	6005	ANP	C1'
4	D	6004	ANP	C4'
4	D	6004	ANP	C1'
4	H	6008	ANP	C4'
4	H	6008	ANP	C1'
4	F	6006	ANP	C4'
4	F	6006	ANP	C1'
4	C	6003	ANP	C4'

Continued on next page...

Continued from previous page...

Mol	Chain	Res	Type	Atom
4	C	6003	ANP	C1'
4	G	6007	ANP	C4'
4	G	6007	ANP	C1'
4	B	6002	ANP	C4'
4	B	6002	ANP	C1'
4	A	6001	ANP	C4'
4	A	6001	ANP	C1'
4	I	6009	ANP	C4'
4	I	6009	ANP	C1'

All (20) torsion outliers are listed below:

Mol	Chain	Res	Type	Atoms
3	C	5002	MSL	CB-CG-SD-NE
3	C	5003	MSL	CB-CG-SD-NE
3	C	5005	MSL	CB-CG-SD-NE
3	C	5007	MSL	CB-CG-SD-NE
3	C	5008	MSL	CB-CG-SD-NE
3	C	5009	MSL	CB-CG-SD-NE
3	C	5004	MSL	CB-CG-SD-NE
3	C	5006	MSL	CB-CG-SD-NE
3	C	5001	MSL	CB-CG-SD-NE
3	C	5010	MSL	CB-CG-SD-NE
4	F	6006	ANP	C2'-C1'-N9-C8
4	D	6004	ANP	C2'-C1'-N9-C8
4	G	6007	ANP	C2'-C1'-N9-C8
4	I	6009	ANP	C2'-C1'-N9-C8
4	C	6003	ANP	C2'-C1'-N9-C8
4	A	6001	ANP	C2'-C1'-N9-C8
4	J	6010	ANP	C2'-C1'-N9-C8
4	E	6005	ANP	C2'-C1'-N9-C8
4	B	6002	ANP	C2'-C1'-N9-C8
4	B	6002	ANP	O1B-PB-N3B-PG

There are no ring outliers.

5.7 Other polymers ⓘ

There are no such residues in this entry.

5.8 Polymer linkage issues

There are no chain breaks in this entry.

6 Fit of model and data ⓘ

6.1 Protein, DNA and RNA chains ⓘ

In the following table, the column labelled ‘#RSRZ> 2’ contains the number (and percentage) of RSRZ outliers, followed by percent RSRZ outliers for the chain as percentile scores relative to all X-ray entries and entries of similar resolution. The OWAB column contains the minimum, median, 95th percentile and maximum values of the occupancy-weighted average B-factor per residue. The column labelled ‘Q< 0.9’ lists the number of (and percentage) of residues with an average occupancy less than 0.9.

Mol	Chain	Analysed	<RSRZ>	#RSRZ>2	OWAB(Å ²)	Q<0.9
1	A	353/356 (99%)	-0.39	0 100 100	55, 73, 96, 108	0
1	B	353/356 (99%)	-0.34	0 100 100	55, 73, 96, 108	0
1	C	353/356 (99%)	-0.41	0 100 100	55, 73, 96, 108	0
1	D	353/356 (99%)	-0.36	0 100 100	55, 73, 96, 108	0
1	E	353/356 (99%)	-0.38	1 (0%) 91 76	55, 73, 96, 108	0
1	F	353/356 (99%)	-0.38	0 100 100	55, 73, 96, 108	0
1	G	353/356 (99%)	-0.33	0 100 100	55, 73, 96, 108	0
1	H	353/356 (99%)	-0.35	0 100 100	55, 73, 96, 108	0
1	I	353/356 (99%)	-0.39	0 100 100	55, 73, 96, 108	0
1	J	353/356 (99%)	-0.39	0 100 100	55, 73, 96, 108	0
All	All	3530/3560 (99%)	-0.37	1 (0%) 100 100	55, 73, 96, 108	0

All (1) RSRZ outliers are listed below:

Mol	Chain	Res	Type	RSRZ
1	E	3	CYS	2.2

6.2 Non-standard residues in protein, DNA, RNA chains ⓘ

There are no non-standard protein/DNA/RNA residues in this entry.

6.3 Carbohydrates ⓘ

There are no carbohydrates in this entry.

6.4 Ligands

In the following table, the Atoms column lists the number of modelled atoms in the group and the number defined in the chemical component dictionary. LLDF column lists the quality of electron density of the group with respect to its neighbouring residues in protein, DNA or RNA chains. The B-factors column lists the minimum, median, 95th percentile and maximum values of B factors of atoms in the group. The column labelled 'Q < 0.9' lists the number of atoms with occupancy less than 0.9.

Mol	Type	Chain	Res	Atoms	RSR	LLDF	B-factors(Å ²)	Q<0.9
4	ANP	F	6006	31/31	0.27	1.07	78,91,100,101	0
4	ANP	E	6005	31/31	0.25	1.06	79,95,105,106	0
4	ANP	C	6003	31/31	0.25	0.91	64,76,92,93	0
3	MSL	C	5003	11/11	0.22	0.81	63,64,66,66	0
4	ANP	G	6007	31/31	0.26	0.80	65,86,95,96	0
3	MSL	C	5007	11/11	0.21	0.74	62,68,77,77	0
4	ANP	D	6004	31/31	0.23	0.63	83,95,105,106	0
3	MSL	C	5008	11/11	0.21	0.60	63,65,66,67	0
3	MSL	C	5006	11/11	0.23	0.55	73,79,85,85	0
4	ANP	A	6001	31/31	0.21	0.48	60,76,82,82	0
3	MSL	C	5001	11/11	0.18	0.32	51,54,57,58	0
4	ANP	I	6009	31/31	0.21	0.32	69,78,84,85	0
3	MSL	C	5005	11/11	0.19	0.17	75,78,79,79	0
3	MSL	C	5002	11/11	0.19	-0.23	37,41,46,48	0
4	ANP	J	6010	31/31	0.19	-0.25	47,58,64,67	0
2	MN	A	1003	1/1	0.21	-0.25	57,57,57,57	0
3	MSL	C	5009	11/11	0.17	-0.28	53,56,64,65	0
2	MN	A	1001	1/1	0.23	-0.37	68,68,68,68	0
4	ANP	B	6002	31/31	0.20	-0.42	42,50,60,65	0
4	ANP	H	6008	31/31	0.19	-0.53	40,48,59,67	0
2	MN	H	1072	1/1	0.18	-0.58	57,57,57,57	0
3	MSL	C	5004	11/11	0.16	-0.59	71,73,75,77	0
3	MSL	C	5010	11/11	0.16	-0.68	38,42,49,49	0
2	MN	G	1062	1/1	0.21	-0.70	65,65,65,65	0
2	MN	I	1082	1/1	0.17	-0.76	67,67,67,67	0
2	MN	E	1041	1/1	0.23	-0.76	73,73,73,73	0
2	MN	G	1063	1/1	0.20	-0.87	63,63,63,63	0
2	MN	D	1033	1/1	0.19	-0.92	56,56,56,56	0
2	MN	E	1043	1/1	0.17	-1.00	61,61,61,61	0
2	MN	C	1022	1/1	0.17	-1.04	66,66,66,66	0
2	MN	C	1023	1/1	0.20	-1.05	63,63,63,63	0
2	MN	F	1051	1/1	0.18	-1.08	69,69,69,69	0
2	MN	H	1073	1/1	0.22	-1.09	48,48,48,48	0
2	MN	I	1081	1/1	0.21	-1.23	68,68,68,68	0
2	MN	A	1002	1/1	0.16	-1.26	62,62,62,62	0

Continued on next page...

Continued from previous page...

Mol	Type	Chain	Res	Atoms	RSR	LLDF	B-factors(\AA^2)	Q<0.9
2	MN	D	1032	1/1	0.15	-1.27	70,70,70,70	0
2	MN	F	1053	1/1	0.14	-1.28	69,69,69,69	0
2	MN	H	1071	1/1	0.24	-1.30	57,57,57,57	0
2	MN	E	1042	1/1	0.15	-1.38	65,65,65,65	0
2	MN	F	1052	1/1	0.17	-1.48	70,70,70,70	0
2	MN	D	1031	1/1	0.15	-1.68	65,65,65,65	0
2	MN	I	1083	1/1	0.17	-1.80	62,62,62,62	0
2	MN	B	1013	1/1	0.16	-2.04	56,56,56,56	0
2	MN	G	1061	1/1	0.17	-2.28	66,66,66,66	0
2	MN	B	1012	1/1	0.17	-2.28	60,60,60,60	0
2	MN	J	1092	1/1	0.12	-2.32	62,62,62,62	0
2	MN	C	1021	1/1	0.17	-2.57	66,66,66,66	0
2	MN	J	1091	1/1	0.24	-2.71	62,62,62,62	0
2	MN	B	1011	1/1	0.19	-3.34	62,62,62,62	0
2	MN	J	1093	1/1	0.21	-4.62	57,57,57,57	0

6.5 Other polymers ⓘ

There are no such residues in this entry.