



# Full wwPDB X-ray Structure Validation Report

Feb 28, 2014 – 08:17 PM GMT

PDB ID : 3D57  
Title : TR Variant D355R  
Authors : Jouravel, N.  
Deposited on : 2008-05-15  
Resolution : 2.20 Å(reported)

This is a full wwPDB validation report for a publicly released PDB entry.  
We welcome your comments at [validation@mail.wwpdb.org](mailto:validation@mail.wwpdb.org)  
A user guide is available at <http://wwpdb.org/ValidationPDFNotes.html>

---

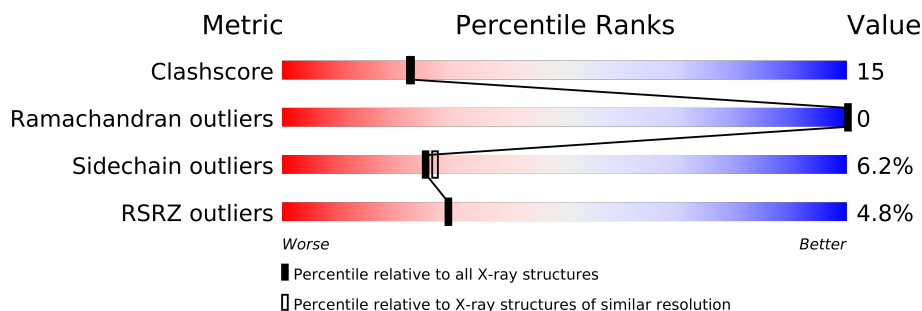
The following versions of software and data (see [references](#)) were used in the production of this report:

MolProbity : 4.02b-467  
Mogul : 1.15 2013  
Xtriage (Phenix) : dev-1323  
EDS : stable22639  
Percentile statistics : 21963  
Refmac : 5.8.0049  
CCP4 : 6.3.0 (Settle)  
Ideal geometry (proteins) : Engh & Huber (2001)  
Ideal geometry (DNA, RNA) : Parkinson et. al. (1996)  
Validation Pipeline (wwPDB-VP) : stable22683

# 1 Overall quality at a glance

The reported resolution of this entry is 2.20 Å.

Percentile scores (ranging between 0-100) for global validation metrics of the entry are shown in the following graphic. The table shows the number of entries on which the scores are based.



Metric	Whole archive (#Entries)	Similar resolution (#Entries, resolution range(Å))
Clashscore	79885	3751 (2.20-2.20)
Ramachandran outliers	78287	3681 (2.20-2.20)
Sidechain outliers	78261	3682 (2.20-2.20)
RSRZ outliers	66119	2939 (2.20-2.20)

The table below summarises the geometric issues observed across the polymeric chains and their fit to the electron density. The red, orange, yellow and green segments on the lower bar indicate the fraction of residues that contain outliers for  $\geq 3$ , 2, 1 and 0 types of geometric quality criteria. The upper red bar (where present) indicates the fraction of residues that have poor fit to the electron density.

Mol	Chain	Length	Quality of chain
1	A	266	
1	B	266	

## 2 Entry composition

There are 4 unique types of molecules in this entry. The entry contains 4069 atoms, of which 0 are hydrogen and 0 are deuterium.

In the tables below, the ZeroOcc column contains the number of atoms modelled with zero occupancy, the AltConf column contains the number of residues with at least one atom in alternate conformation and the Trace column contains the number of residues modelled with at most 2 atoms.

- Molecule 1 is a protein called Thyroid hormone receptor beta.

Mol	Chain	Residues	Atoms					ZeroOcc	AltConf	Trace
1	A	245	Total	C	N	O	S	0	0	0
			1949	1251	329	353	16			
1	B	248	Total	C	N	O	S	0	0	0
			1968	1264	330	358	16			

There are 30 discrepancies between the modelled and reference sequences:

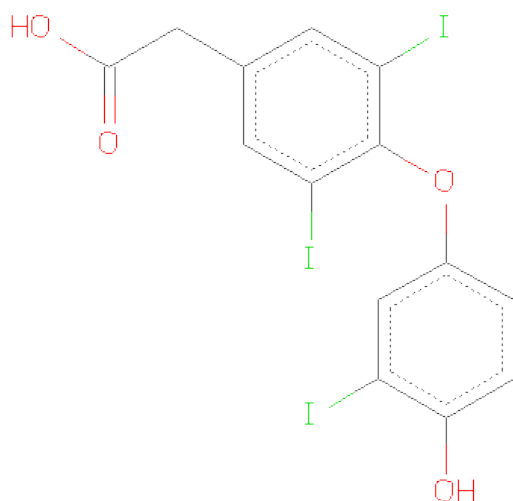
Chain	Residue	Modelled	Actual	Comment	Reference
A	195	MET	-	EXPRESSION TAG	UNP P10828
A	196	GLY	-	EXPRESSION TAG	UNP P10828
A	197	SER	-	EXPRESSION TAG	UNP P10828
A	198	SER	-	EXPRESSION TAG	UNP P10828
A	199	HIS	-	EXPRESSION TAG	UNP P10828
A	200	HIS	-	EXPRESSION TAG	UNP P10828
A	201	HIS	-	EXPRESSION TAG	UNP P10828
A	202	HIS	-	EXPRESSION TAG	UNP P10828
A	203	HIS	-	EXPRESSION TAG	UNP P10828
A	204	HIS	-	EXPRESSION TAG	UNP P10828
A	205	SER	-	EXPRESSION TAG	UNP P10828
A	206	GLN	-	EXPRESSION TAG	UNP P10828
A	207	ASP	-	EXPRESSION TAG	UNP P10828
A	208	PRO	-	EXPRESSION TAG	UNP P10828
A	355	ARG	ASP	ENGINEERED	UNP P10828
B	195	MET	-	EXPRESSION TAG	UNP P10828
B	196	GLY	-	EXPRESSION TAG	UNP P10828
B	197	SER	-	EXPRESSION TAG	UNP P10828
B	198	SER	-	EXPRESSION TAG	UNP P10828
B	199	HIS	-	EXPRESSION TAG	UNP P10828
B	200	HIS	-	EXPRESSION TAG	UNP P10828
B	201	HIS	-	EXPRESSION TAG	UNP P10828
B	202	HIS	-	EXPRESSION TAG	UNP P10828
B	203	HIS	-	EXPRESSION TAG	UNP P10828
B	204	HIS	-	EXPRESSION TAG	UNP P10828

*Continued on next page...*

Continued from previous page...

Chain	Residue	Modelled	Actual	Comment	Reference
B	205	SER	-	EXPRESSION TAG	UNP P10828
B	206	GLN	-	EXPRESSION TAG	UNP P10828
B	207	ASP	-	EXPRESSION TAG	UNP P10828
B	208	PRO	-	EXPRESSION TAG	UNP P10828
B	355	ARG	ASP	ENGINEERED	UNP P10828

- Molecule 2 is [4-(4-HYDROXY-3-iodo-PHENOXY)-3,5-DIIODO-PHENYL]-ACETIC ACID (three-letter code: 4HY) (formula: C<sub>14</sub>H<sub>9</sub>I<sub>3</sub>O<sub>4</sub>).



Mol	Chain	Residues	Atoms				ZeroOcc	AltConf
2	A	1	Total	C	I	O	0	0
			21	14	3	4		
2	B	1	Total	C	I	O	0	0
			21	14	3	4		

- Molecule 3 is SULFATE ION (three-letter code: SO4) (formula: O<sub>4</sub>S).



Mol	Chain	Residues	Atoms			ZeroOcc	AltConf
3	B	1	Total	O	S	0	0
			5	4	1		

- Molecule 4 is water.

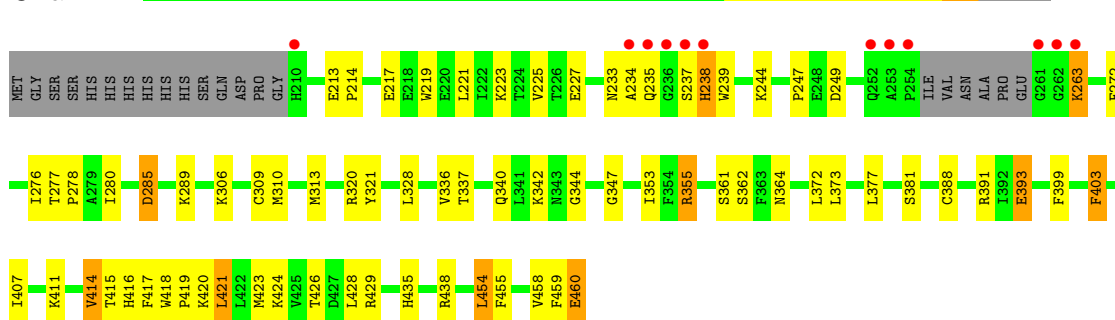
Mol	Chain	Residues	Atoms		ZeroOcc	AltConf
4	A	55	Total	O	0	0
			55	55		
4	B	50	Total	O	0	0
			50	50		

### 3 Residue-property plots

These plots are drawn for all protein, RNA and DNA chains in the entry. The first graphic for a chain summarises the proportions of errors displayed in the second graphic. The second graphic shows the sequence view annotated by issues in geometry and electron density. Residues are color-coded according to the number of geometric quality criteria for which they contain at least one outlier: green = 0, yellow = 1, orange = 2 and red = 3 or more. A red dot above a residue indicates a poor fit to the electron density ( $RSRZ > 2$ ). Stretches of 2 or more consecutive residues without any outlier are shown as a green connector. Residues present in the sample, but not in the model, are shown in grey.

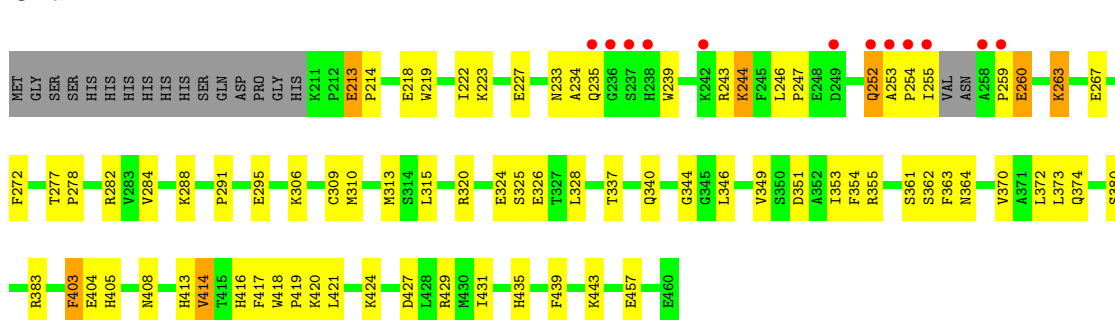
- Molecule 1: Thyroid hormone receptor beta

Chain A:



- Molecule 1: Thyroid hormone receptor beta

Chain B:



## 4 Data and refinement statistics

Property	Value	Source
Space group	P 1 21 1	Depositor
Cell constants a, b, c, $\alpha$ , $\beta$ , $\gamma$	55.56Å 92.96Å 58.81Å 90.00° 110.02° 90.00°	Depositor
Resolution (Å)	25.00 – 2.20 24.51 – 2.20	Depositor EDS
% Data completeness (in resolution range)	(Not available) (25.00-2.20) 90.2 (24.51-2.20)	Depositor EDS
$R_{merge}$	0.08	Depositor
$R_{sym}$	0.07	Depositor
$\langle I/\sigma(I) \rangle$ <sup>1</sup>	3.39 (at 2.19Å)	Xtriage
Refinement program	CNS	Depositor
R, $R_{free}$	0.210 , 0.240 0.217 , (Not available)	Depositor DCC
$R_{free}$ test set	No test flags present.	DCC
Wilson B-factor (Å <sup>2</sup> )	18.7	Xtriage
Anisotropy	0.567	Xtriage
Bulk solvent $k_{sol}$ (e/Å <sup>3</sup> ), $B_{sol}$ (Å <sup>2</sup> )	0.37 , 23.0	EDS
Estimated twinning fraction	No twinning to report.	Xtriage
L-test for twinning	$\langle  L  \rangle = 0.47$ , $\langle L^2 \rangle = 0.30$	Xtriage
Outliers	0 of 25803 reflections	Xtriage
$F_o, F_c$ correlation	0.92	EDS
Total number of atoms	4069	wwPDB-VP
Average B, all atoms (Å <sup>2</sup> )	25.0	wwPDB-VP

Xtriage's analysis on translational NCS is as follows: *The largest off-origin peak in the Patterson function is 7.58% of the height of the origin peak. No significant pseudotranslation is detected.*

<sup>1</sup>Intensities estimated from amplitudes.

## 5 Model quality

### 5.1 Standard geometry

Bond lengths and bond angles in the following residue types are not validated in this section: SO4, 4HY

The Z score for a bond length (or angle) is the number of standard deviations the observed value is removed from the expected value. A bond length (or angle) with  $|Z| > 5$  is considered an outlier worth inspection. RMSZ is the root-mean-square of all Z scores of the bond lengths (or angles).

Mol	Chain	Bond lengths		Bond angles	
		RMSZ	$\# Z  > 5$	RMSZ	$\# Z  > 5$
1	A	0.41	0/1994	0.60	3/2695 (0.1%)
1	B	0.35	0/2013	0.62	1/2722 (0.0%)
All	All	0.38	0/4007	0.61	4/5417 (0.1%)

There are no bond length outliers.

All (4) bond angle outliers are listed below:

Mol	Chain	Res	Type	Atoms	Z	Observed(°)	Ideal(°)
1	A	247	PRO	CB-CA-C	-5.65	97.88	112.00
1	A	411	LYS	CD-CE-NZ	5.63	124.66	111.70
1	A	238	HIS	CB-CA-C	-5.61	99.19	110.40
1	B	413	HIS	N-CA-C	-5.35	96.56	111.00

There are no chirality outliers.

There are no planarity outliers.

### 5.2 Close contacts

In the following table, the Non-H and H(model) columns list the number of non-hydrogen atoms and hydrogen atoms in the chain respectively. The H(added) column lists the number of hydrogens added by MolProbity. The Clashes column lists the number of clashes within the asymmetric unit, and the number in parentheses is this value normalized per 1000 atoms of the molecule in the chain. The Symm-Clashes column gives symmetry related clashes, in the same way as for the Clashes column.

Mol	Chain	Non-H	H(model)	H(added)	Clashes	Symm-Clashes
1	A	1949	0	1955	53	0
1	B	1968	0	1977	66	0
2	A	21	0	8	1	0

*Continued on next page...*

*Continued from previous page...*

Mol	Chain	Non-H	H(model)	H(added)	Clashes	Symm-Clashes
2	B	21	0	8	1	0
3	B	5	0	0	0	0
4	A	55	0	0	4	0
4	B	50	0	0	1	0
All	All	4069	0	3948	116	0

Clashscore is defined as the number of clashes calculated for the entry per 1000 atoms (including hydrogens) of the entry. The overall clashscore for this entry is 15.

All (116) close contacts within the same asymmetric unit are listed below.

Atom-1	Atom-2	Distance(Å)	Clash(Å)
1:B:259:PRO:O	1:B:260:GLU:CG	1.86	1.24
1:B:259:PRO:C	1:B:260:GLU:HG3	1.48	1.20
1:B:259:PRO:O	1:B:260:GLU:HG3	1.05	1.19
1:B:263:LYS:HE3	1:B:263:LYS:H	1.20	1.04
1:B:235:GLN:HB3	1:B:320:ARG:NH2	1.77	1.00
1:A:415:THR:HB	4:A:539:HOH:O	1.61	0.96
1:B:235:GLN:HB3	1:B:320:ARG:HH21	1.29	0.95
1:B:235:GLN:NE2	1:B:320:ARG:HD3	1.85	0.92
1:B:235:GLN:HE21	1:B:320:ARG:HD3	1.35	0.89
1:B:263:LYS:CE	1:B:263:LYS:H	1.88	0.86
1:B:418:TRP:HB3	1:B:419:PRO:HD3	1.61	0.82
1:A:418:TRP:HB3	1:A:419:PRO:HD3	1.66	0.77
1:B:259:PRO:C	1:B:260:GLU:CG	2.37	0.76
1:B:309:CYS:SG	1:B:313:MET:HE2	2.26	0.75
1:B:246:LEU:HD12	1:B:247:PRO:HD2	1.68	0.75
1:B:263:LYS:N	1:B:263:LYS:HE3	1.98	0.73
1:B:235:GLN:CB	1:B:320:ARG:HH21	2.03	0.70
1:B:351:ASP:O	1:B:355:ARG:HG3	1.92	0.69
1:A:263:LYS:N	1:A:263:LYS:HD3	2.07	0.69
1:A:309:CYS:O	1:A:313:MET:HG3	1.94	0.67
1:A:225:VAL:HG11	1:A:399:PHE:HE2	1.62	0.65
1:B:218:GLU:O	1:B:222:ILE:HG13	1.98	0.64
1:A:416:HIS:HB2	1:A:420:LYS:HE3	1.79	0.64
1:B:214:PRO:HG2	1:B:219:TRP:CE2	2.32	0.64
1:A:223:LYS:O	1:A:227:GLU:HG3	1.99	0.63
1:A:381:SER:OG	1:A:393:GLU:HG2	1.99	0.61
1:A:272:PHE:HE2	1:A:336:VAL:HG11	1.66	0.61
1:B:272:PHE:HE1	1:B:344:GLY:HA3	1.66	0.60
1:A:306:LYS:HZ3	1:A:460:GLU:HG2	1.66	0.60
1:A:280:ILE:HG21	1:A:458:VAL:HG21	1.83	0.60
1:B:315:LEU:HD22	1:B:373:LEU:HD22	1.85	0.59

*Continued on next page...*

*Continued from previous page...*

Atom-1	Atom-2	Distance(Å)	Clash(Å)
1:A:235:GLN:O	1:A:235:GLN:HG2	2.04	0.58
1:B:337:THR:OG1	1:B:340:GLN:HG3	2.04	0.58
1:B:429:ARG:HH11	1:B:429:ARG:HG2	1.68	0.58
1:A:429:ARG:HD3	4:A:513:HOH:O	2.03	0.57
1:B:416:HIS:O	1:B:420:LYS:HG3	2.06	0.56
1:B:346:LEU:HB3	1:B:349:VAL:HB	1.87	0.56
1:A:414:VAL:CG1	1:A:417:PHE:HD1	2.19	0.55
1:A:214:PRO:HG2	1:A:219:TRP:CE2	2.41	0.55
1:A:285:ASP:O	1:A:289:LYS:HG3	2.07	0.55
1:A:235:GLN:C	1:A:237:SER:H	2.09	0.55
1:A:280:ILE:CG2	1:A:458:VAL:HG21	2.37	0.55
1:A:306:LYS:NZ	1:A:460:GLU:HG2	2.22	0.54
1:A:362:SER:HB2	1:B:364:ASN:HD21	1.71	0.54
1:A:225:VAL:HG11	1:A:399:PHE:CE2	2.42	0.54
1:B:259:PRO:O	1:B:260:GLU:CD	2.44	0.54
1:B:235:GLN:CB	1:B:320:ARG:NH2	2.61	0.54
1:A:221:LEU:O	1:A:225:VAL:HG13	2.06	0.53
1:B:214:PRO:HG2	1:B:219:TRP:CZ2	2.44	0.53
1:A:213:GLU:HB3	1:A:214:PRO:HD2	1.91	0.52
1:B:372:LEU:HD13	1:B:403:PHE:HA	1.90	0.52
1:A:403:PHE:O	1:A:407:ILE:HG12	2.09	0.52
1:A:423:MET:O	1:A:426:THR:HB	2.08	0.52
1:A:429:ARG:HG2	1:A:429:ARG:HH11	1.74	0.52
1:A:239:TRP:CG	1:A:320:ARG:HD3	2.44	0.51
1:B:272:PHE:CE1	1:B:344:GLY:HA3	2.45	0.51
1:B:427:ASP:O	1:B:431:ILE:HG13	2.10	0.51
1:A:454:LEU:HB2	4:A:510:HOH:O	2.09	0.51
1:B:252:GLN:O	1:B:253:ALA:C	2.48	0.51
1:A:337:THR:OG1	1:A:340:GLN:HG3	2.11	0.50
1:A:342:LYS:HG3	1:A:347:GLY:O	2.10	0.50
1:A:417:PHE:CE2	1:A:421:LEU:HD12	2.46	0.50
1:A:217:GLU:CD	1:A:217:GLU:H	2.16	0.50
1:B:277:THR:HB	1:B:278:PRO:HD3	1.94	0.49
1:B:284:VAL:O	1:B:288:LYS:HG2	2.12	0.49
1:B:439:PHE:CE2	1:B:443:LYS:HD2	2.48	0.49
1:A:355:ARG:NH2	1:B:324:GLU:O	2.46	0.49
1:A:364:ASN:HD21	1:B:362:SER:HB2	1.78	0.49
1:B:235:GLN:NE2	1:B:320:ARG:CD	2.66	0.48
1:B:243:ARG:O	1:B:244:LYS:HD2	2.13	0.48
1:B:429:ARG:NH1	1:B:429:ARG:HG2	2.28	0.48
1:A:310:MET:HE2	1:A:435:HIS:HB2	1.96	0.47
1:B:414:VAL:CG1	1:B:417:PHE:HD1	2.26	0.47

*Continued on next page...*

*Continued from previous page...*

Atom-1	Atom-2	Distance(Å)	Clash(Å)
1:B:353:ILE:HD13	2:B:500:4HY:I3	2.84	0.47
1:B:380:SER:O	1:B:383:ARG:HG2	2.14	0.47
1:A:225:VAL:CG1	1:A:399:PHE:HE2	2.27	0.46
1:B:223:LYS:O	1:B:227:GLU:HG3	2.15	0.46
1:A:321:TYR:HA	1:A:328:LEU:HD23	1.96	0.46
1:B:254:PRO:O	1:B:255:ILE:CG2	2.64	0.46
1:A:429:ARG:HG2	1:A:429:ARG:NH1	2.31	0.45
1:A:414:VAL:HG13	1:A:417:PHE:HB2	1.96	0.45
1:B:325:SER:O	1:B:326:GLU:HB2	2.16	0.45
1:A:277:THR:HB	1:A:278:PRO:HD3	1.98	0.45
1:B:370:VAL:O	1:B:374:GLN:HG3	2.17	0.45
1:B:424:LYS:NZ	4:B:534:HOH:O	2.49	0.45
1:B:235:GLN:HB2	1:B:239:TRP:CD1	2.52	0.45
1:B:255:ILE:O	1:B:255:ILE:HG13	2.17	0.45
1:A:235:GLN:OE1	1:A:239:TRP:CD1	2.68	0.45
1:B:380:SER:HB2	1:B:383:ARG:HE	1.82	0.44
1:A:388:CYS:HB3	1:A:391:ARG:HD3	1.99	0.44
1:B:310:MET:SD	1:B:313:MET:HE3	2.57	0.44
1:A:372:LEU:HD13	1:A:403:PHE:HA	2.00	0.44
1:B:328:LEU:HG	1:B:354:PHE:CZ	2.52	0.43
1:B:405:HIS:HA	1:B:408:ASN:HD22	1.84	0.43
1:B:263:LYS:CD	1:B:263:LYS:H	2.26	0.43
1:B:306:LYS:NZ	1:B:457:GLU:O	2.52	0.43
1:A:263:LYS:HD3	1:A:263:LYS:H	1.82	0.43
1:A:347:GLY:HA3	1:A:438:ARG:HE	1.83	0.43
1:A:272:PHE:HE1	1:A:344:GLY:HA3	1.85	0.42
1:A:353:ILE:HD13	2:A:500:4HY:I3	2.88	0.42
1:A:424:LYS:HA	1:A:424:LYS:HD3	1.83	0.42
1:B:309:CYS:SG	1:B:313:MET:CE	3.04	0.42
1:B:326:GLU:HA	1:B:326:GLU:OE1	2.19	0.42
1:B:234:ALA:HB2	1:B:282:ARG:NH1	2.35	0.42
1:A:435:HIS:HE1	1:A:459:PHE:CD1	2.38	0.41
1:A:276:ILE:HD13	1:A:455:PHE:CE1	2.56	0.41
1:A:435:HIS:HE1	1:A:459:PHE:CE1	2.39	0.41
1:B:363:PHE:HD2	1:B:417:PHE:CE1	2.38	0.41
1:A:234:ALA:HB2	4:A:519:HOH:O	2.20	0.41
1:B:310:MET:SD	1:B:313:MET:CE	3.09	0.41
1:B:404:GLU:OE1	1:B:418:TRP:CD1	2.74	0.40
1:A:377:LEU:HD11	1:A:428:LEU:HD13	2.02	0.40
1:B:418:TRP:HB3	1:B:419:PRO:CD	2.41	0.40
1:B:235:GLN:NE2	1:B:320:ARG:HH21	2.19	0.40
1:B:213:GLU:HB3	1:B:214:PRO:HD2	2.04	0.40

*Continued on next page...*

*Continued from previous page...*

Atom-1	Atom-2	Distance(Å)	Clash(Å)
1:B:291:PRO:O	1:B:295:GLU:HG3	2.22	0.40

There are no symmetry-related clashes.

## 5.3 Torsion angles

### 5.3.1 Protein backbone ⓘ

In the following table, the Percentiles column shows the percent Ramachandran outliers of the chain as a percentile score with respect to all X-ray entries followed by that with respect to entries of similar resolution. The Analysed column shows the number of residues for which the backbone conformation was analysed, and the total number of residues.

Mol	Chain	Analysed	Favoured	Allowed	Outliers	Percentiles	
1	A	241/266 (91%)	233 (97%)	8 (3%)	0	100	100
1	B	244/266 (92%)	231 (95%)	13 (5%)	0	100	100
All	All	485/532 (91%)	464 (96%)	21 (4%)	0	100	100

There are no Ramachandran outliers to report.

### 5.3.2 Protein sidechains ⓘ

In the following table, the Percentiles column shows the percent sidechain outliers of the chain as a percentile score with respect to all X-ray entries followed by that with respect to entries of similar resolution. The Analysed column shows the number of residues for which the sidechain conformation was analysed, and the total number of residues.

Mol	Chain	Analysed	Rotameric	Outliers	Percentiles	
1	A	215/233 (92%)	200 (93%)	15 (7%)	21	22
1	B	217/233 (93%)	205 (94%)	12 (6%)	30	34
All	All	432/466 (93%)	405 (94%)	27 (6%)	25	27

All (27) residues with a non-rotameric sidechain are listed below:

Mol	Chain	Res	Type
1	A	233	ASN
1	A	238	HIS
1	A	244	LYS

*Continued on next page...*

*Continued from previous page...*

Mol	Chain	Res	Type
1	A	249	ASP
1	A	263	LYS
1	A	285	ASP
1	A	355	ARG
1	A	361	SER
1	A	373	LEU
1	A	393	GLU
1	A	403	PHE
1	A	414	VAL
1	A	421	LEU
1	A	454	LEU
1	A	460	GLU
1	B	213	GLU
1	B	233	ASN
1	B	244	LYS
1	B	252	GLN
1	B	260	GLU
1	B	263	LYS
1	B	267	GLU
1	B	361	SER
1	B	403	PHE
1	B	414	VAL
1	B	421	LEU
1	B	435	HIS

Some sidechains can be flipped to improve hydrogen bonding and reduce clashes. All (10) such sidechains are listed below:

Mol	Chain	Res	Type
1	A	210	HIS
1	A	233	ASN
1	A	241	GLN
1	A	252	GLN
1	A	271	HIS
1	A	364	ASN
1	B	235	GLN
1	B	364	ASN
1	B	408	ASN
1	B	441	HIS

### 5.3.3 RNA ⓘ

There are no RNA chains in this entry.

## 5.4 Non-standard residues in protein, DNA, RNA chains ⓘ

There are no non-standard protein/DNA/RNA residues in this entry.

## 5.5 Carbohydrates ⓘ

There are no carbohydrates in this entry.

## 5.6 Ligand geometry ⓘ

3 ligands are modelled in this entry.

In the following table, the Counts columns list the number of bonds (or angles) for which Mogul statistics could be retrieved, the number of bonds (or angles) that are observed in the model and the number of bonds (or angles) that are defined in the chemical component dictionary. The Link column lists molecule types, if any, to which the group is linked. The Z score for a bond length (or angle) is the number of standard deviations the observed value is removed from the expected value. A bond length (or angle) with  $|Z| > 2$  is considered an outlier worth inspection. RMSZ is the root-mean-square of all Z scores of the bond lengths (or angles).

Mol	Type	Chain	Res	Link	Bond lengths			Bond angles		
					Counts	RMSZ	$\# Z  > 2$	Counts	RMSZ	$\# Z  > 2$
2	4HY	A	500	-	22,22,22	1.67	4 (18%)	31,31,31	1.06	2 (6%)
2	4HY	B	500	-	22,22,22	1.73	4 (18%)	31,31,31	1.00	1 (3%)
3	SO4	B	501	-	4,4,4	0.15	0	6,6,6	0.09	0

In the following table, the Chirals column lists the number of chiral outliers, the number of chiral centers analysed, the number of these observed in the model and the number defined in the chemical component dictionary. Similar counts are reported in the Torsion and Rings columns. '-' means no outliers of that kind were identified.

Mol	Type	Chain	Res	Link	Chirals	Torsions	Rings
2	4HY	A	500	-	-	0/8/8/8	0/2/2/2
2	4HY	B	500	-	-	0/8/8/8	0/2/2/2
3	SO4	B	501	-	-	0/0/0/0	0/0/0/0

All (8) bond length outliers are listed below:

Mol	Chain	Res	Type	Atoms	Z	Observed(Å)	Ideal(Å)
2	B	500	4HY	C3-C1	4.26	1.47	1.39
2	A	500	4HY	C3-C1	3.91	1.46	1.39
2	B	500	4HY	C13-C14	3.37	1.59	1.50
2	A	500	4HY	C13-C14	3.20	1.58	1.50
2	B	500	4HY	C11-C9	2.40	1.45	1.39
2	A	500	4HY	C12-C2	2.27	1.43	1.38
2	B	500	4HY	C12-C2	2.19	1.43	1.38
2	A	500	4HY	C11-C9	2.09	1.44	1.39

All (3) bond angle outliers are listed below:

Mol	Chain	Res	Type	Atoms	Z	Observed(°)	Ideal(°)
2	B	500	4HY	C2-O2-C7	3.29	124.16	118.45
2	A	500	4HY	C2-O2-C7	3.24	124.08	118.45
2	A	500	4HY	O3-C14-C13	-2.27	117.61	123.19

There are no chirality outliers.

There are no torsion outliers.

There are no ring outliers.

## 5.7 Other polymers ⓘ

There are no such residues in this entry.

## 5.8 Polymer linkage issues

There are no chain breaks in this entry.

## 6 Fit of model and data ⓘ

### 6.1 Protein, DNA and RNA chains ⓘ

In the following table, the column labelled ‘#RSRZ> 2’ contains the number (and percentage) of RSRZ outliers, followed by percent RSRZ outliers for the chain as percentile scores relative to all X-ray entries and entries of similar resolution. The OWAB column contains the minimum, median, 95<sup>th</sup> percentile and maximum values of the occupancy-weighted average B-factor per residue. The column labelled ‘Q< 0.9’ lists the number of (and percentage) of residues with an average occupancy less than 0.9.

Mol	Chain	Analysed	<RSRZ>	#RSRZ>2	OWAB(Å <sup>2</sup> )	Q<0.9
1	A	245/266 (92%)	0.26	12 (4%) 28 28	7, 23, 47, 66	0
1	B	248/266 (93%)	0.25	12 (4%) 29 29	8, 23, 55, 73	0
All	All	493/532 (92%)	0.25	24 (4%) 29 28	7, 23, 50, 73	0

All (24) RSRZ outliers are listed below:

Mol	Chain	Res	Type	RSRZ
1	B	236	GLY	9.8
1	A	236	GLY	9.1
1	A	237	SER	8.7
1	B	237	SER	6.8
1	A	210	HIS	5.8
1	A	254	PRO	5.8
1	B	255	ILE	5.7
1	A	235	GLN	5.7
1	A	262	GLY	5.6
1	B	235	GLN	5.6
1	B	259	PRO	5.5
1	A	234	ALA	5.5
1	B	254	PRO	5.1
1	B	253	ALA	5.0
1	A	253	ALA	4.1
1	A	261	GLY	4.0
1	B	249	ASP	2.6
1	B	258	ALA	2.6
1	A	238	HIS	2.6
1	A	252	GLN	2.4
1	B	242	LYS	2.3
1	B	252	GLN	2.0
1	B	238	HIS	2.0
1	A	263	LYS	2.0

## 6.2 Non-standard residues in protein, DNA, RNA chains

There are no non-standard protein/DNA/RNA residues in this entry.

## 6.3 Carbohydrates

There are no carbohydrates in this entry.

## 6.4 Ligands

In the following table, the Atoms column lists the number of modelled atoms in the group and the number defined in the chemical component dictionary. LLDF column lists the quality of electron density of the group with respect to its neighbouring residues in protein, DNA or RNA chains. The B-factors column lists the minimum, median, 95<sup>th</sup> percentile and maximum values of B factors of atoms in the group. The column labelled 'Q< 0.9' lists the number of atoms with occupancy less than 0.9.

Mol	Type	Chain	Res	Atoms	RSR	LLDF	B-factors(Å <sup>2</sup> )	Q<0.9
3	SO4	B	501	5/5	0.16	0.15	39,40,41,41	0
2	4HY	A	500	21/21	0.09	-1.43	18,21,29,35	0
2	4HY	B	500	21/21	0.10	-1.94	17,21,27,32	0

## 6.5 Other polymers

There are no such residues in this entry.