



# wwPDB X-ray Structure Validation Summary Report i

Feb 27, 2014 – 03:37 AM GMT

PDB ID : 3D69  
Title : Crystal Structure of the Fab Fragment of an Anti-Factor IX Antibody 10C12  
Authors : Shi, X.L.; Huang, M.D.; Zeng, T.  
Deposited on : 2008-05-19  
Resolution : 3.77 Å(reported)

This is a wwPDB validation summary report for a publicly released PDB entry.

We welcome your comments at [validation@mail.wwpdb.org](mailto:validation@mail.wwpdb.org)

A user guide is available at <http://wwpdb.org/ValidationPDFNotes.html>

---

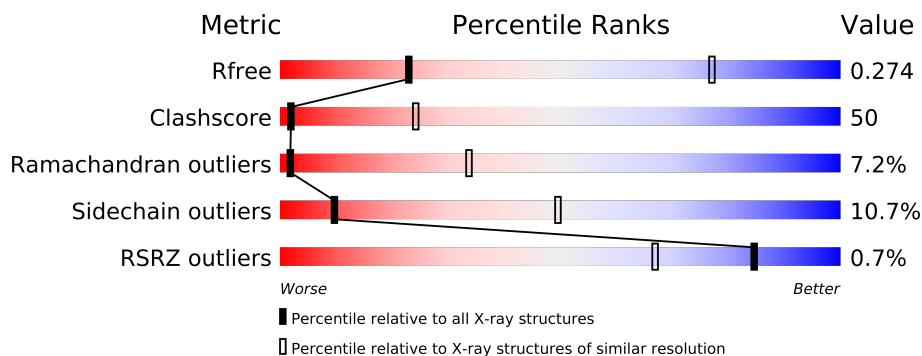
The following versions of software and data (see [references](#)) were used in the production of this report:

MolProbity	:	4.02b-467
Mogul	:	1.15 2013
Xtriage (Phenix)	:	dev-1323
EDS	:	stable22639
Percentile statistics	:	21963
Refmac	:	5.8.0049
CCP4	:	6.3.0 (Settle)
Ideal geometry (proteins)	:	Engh & Huber (2001)
Ideal geometry (DNA, RNA)	:	Parkinson et. al. (1996)
Validation Pipeline (wwPDB-VP)	:	stable22683

# 1 Overall quality at a glance

The reported resolution of this entry is 3.77 Å.

Percentile scores (ranging between 0-100) for global validation metrics of the entry are shown in the following graphic. The table shows the number of entries on which the scores are based.



Metric	Whole archive (#Entries)	Similar resolution (#Entries, resolution range(Å))
$R_{free}$	66092	1139 (4.16-3.40)
Clashscore	79885	1069 (4.06-3.50)
Ramachandran outliers	78287	1019 (4.06-3.50)
Sidechain outliers	78261	1012 (4.06-3.50)
RSRZ outliers	66119	1140 (4.16-3.40)

The table below summarises the geometric issues observed across the polymeric chains and their fit to the electron density. The red, orange, yellow and green segments on the lower bar indicate the fraction of residues that contain outliers for  $\geq 3$ , 2, 1 and 0 types of geometric quality criteria. The upper red bar (where present) indicates the fraction of residues that have poor fit to the electron density.

Mol	Chain	Length	Quality of chain
1	A	216	
1	L	216	
2	B	224	
2	H	224	

## 2 Entry composition

There are 2 unique types of molecules in this entry. The entry contains 6420 atoms, of which 0 are hydrogen and 0 are deuterium.

In the tables below, the ZeroOcc column contains the number of atoms modelled with zero occupancy, the AltConf column contains the number of residues with at least one atom in alternate conformation and the Trace column contains the number of residues modelled with at most 2 atoms.

- Molecule 1 is a protein called anti-factor IX antibody, 10C12.

Mol	Chain	Residues	Atoms					ZeroOcc	AltConf	Trace
1	L	211	Total	C	N	O	S	0	0	0
			1576	989	259	323	5			
1	A	211	Total	C	N	O	S	0	0	0
			1576	989	259	323	5			

- Molecule 2 is a protein called anti-factor IX antibody, 10C12.

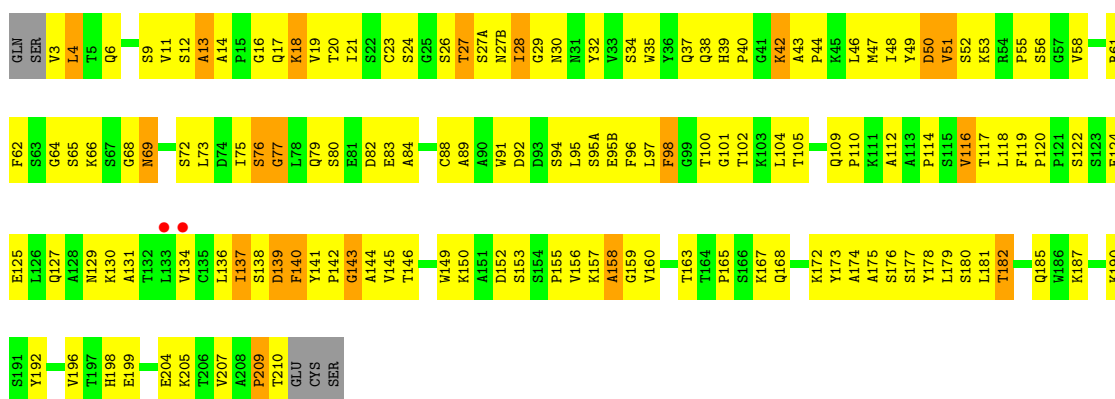
Mol	Chain	Residues	Atoms					ZeroOcc	AltConf	Trace
2	H	218	Total	C	N	O	S	0	0	0
			1634	1031	280	315	8			
2	B	218	Total	C	N	O	S	0	0	0
			1634	1031	280	315	8			

### 3 Residue-property plots

These plots are drawn for all protein, RNA and DNA chains in the entry. The first graphic for a chain summarises the proportions of errors displayed in the second graphic. The second graphic shows the sequence view annotated by issues in geometry and electron density. Residues are color-coded according to the number of geometric quality criteria for which they contain at least one outlier: green = 0, yellow = 1, orange = 2 and red = 3 or more. A red dot above a residue indicates a poor fit to the electron density ( $RSRZ > 2$ ). Stretches of 2 or more consecutive residues without any outlier are shown as a green connector. Residues present in the sample, but not in the model, are shown in grey.

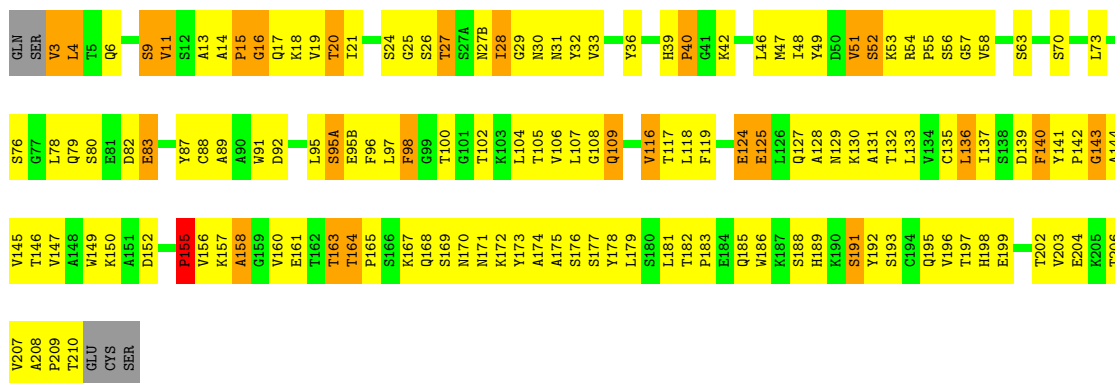
- Molecule 1: anti-factor IX antibody, 10C12

Chain L: 



- Molecule 1: anti-factor IX antibody, 10C12

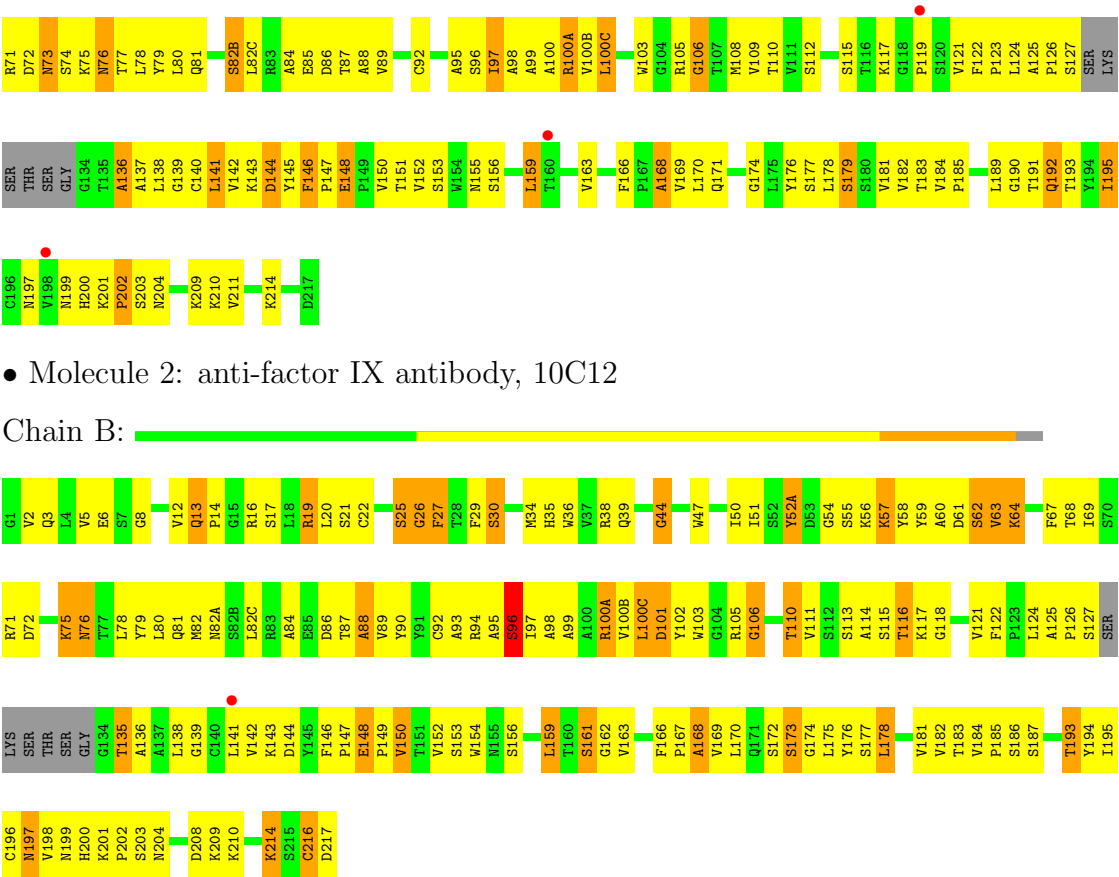
Chain A: 



- Molecule 2: anti-factor IX antibody, 10C12

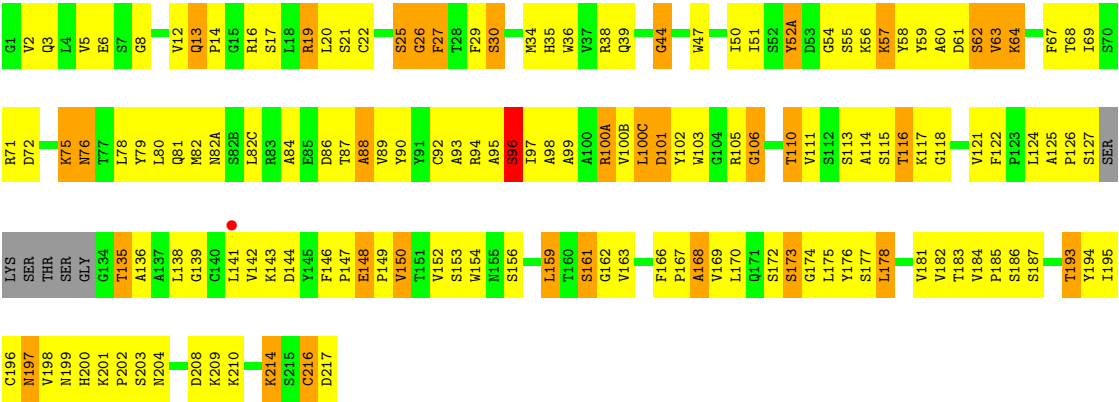
Chain H: 





• Molecule 2: anti-factor IX antibody, 10C12

Chain B:



## 4 Data and refinement statistics

Property	Value	Source
Space group	P 41	Depositor
Cell constants a, b, c, $\alpha$ , $\beta$ , $\gamma$	159.61Å 159.61Å 65.37Å 90.00° 90.00° 90.00°	Depositor
Resolution (Å)	41.26 – 3.77 48.21 – 3.51	Depositor EDS
% Data completeness (in resolution range)	82.2 (41.26-3.77) 81.6 (48.21-3.51)	Depositor EDS
$R_{merge}$	0.22	Depositor
$R_{sym}$	0.01	Depositor
$\langle I/\sigma(I) \rangle$ <sup>1</sup>	1.83 (at 3.48Å)	Xtriage
Refinement program	CNS	Depositor
R, $R_{free}$	0.249 , 0.342 0.260 , 0.274	Depositor DCC
$R_{free}$ test set	712 reflections (5.10%)	DCC
Wilson B-factor (Å <sup>2</sup> )	86.6	Xtriage
Anisotropy	0.581	Xtriage
Bulk solvent $k_{sol}$ (e/Å <sup>3</sup> ), $B_{sol}$ (Å <sup>2</sup> )	0.32 , 55.9	EDS
Estimated twinning fraction	0.308 for h,-k,-l	Xtriage
L-test for twinning	$\langle  L  \rangle = 0.45$ , $\langle L^2 \rangle = 0.28$	Xtriage
Outliers	0 of 17162 reflections	Xtriage
$F_o, F_c$ correlation	0.89	EDS
Total number of atoms	6420	wwPDB-VP
Average B, all atoms (Å <sup>2</sup> )	87.0	wwPDB-VP

Xtriage's analysis on translational NCS is as follows: *The largest off-origin peak in the Patterson function is 3.62% of the height of the origin peak. No significant pseudotranslation is detected.*

<sup>1</sup>Intensities estimated from amplitudes.

## 5 Model quality

### 5.1 Standard geometry

The Z score for a bond length (or angle) is the number of standard deviations the observed value is removed from the expected value. A bond length (or angle) with  $|Z| > 5$  is considered an outlier worth inspection. RMSZ is the root-mean-square of all Z scores of the bond lengths (or angles).

Mol	Chain	Bond lengths		Bond angles	
		RMSZ	# Z  >5	RMSZ	# Z  >5
1	A	0.46	0/1616	0.76	0/2206
1	L	0.45	0/1616	0.74	0/2206
2	B	0.43	0/1671	0.75	0/2271
2	H	0.43	0/1671	0.72	0/2271
All	All	0.44	0/6574	0.75	0/8954

Chiral center outliers are detected by calculating the chiral volume of a chiral center and verifying if the center is modelled as a planar moiety or with the opposite hand. A planarity outlier is detected by checking planarity of atoms in a peptide group, atoms in a mainchain group or atoms of a sidechain that are expected to be planar.

Mol	Chain	#Chirality outliers	#Planarity outliers
1	A	0	1
1	L	0	1
All	All	0	2

There are no bond length outliers.

There are no bond angle outliers.

There are no chirality outliers.

All (2) planarity outliers are listed below:

Mol	Chain	Res	Type	Group
1	A	9	SER	Peptide
1	L	9	SER	Peptide

### 5.2 Close contacts

In the following table, the Non-H and H(model) columns list the number of non-hydrogen atoms and hydrogen atoms in the chain respectively. The H(added) column lists the number of hydrogens added by MolProbity. The Clashes column lists the number of clashes within the asymmetric unit, and the number in parentheses is this value normalized per 1000 atoms of the molecule in the

chain. The Symm-Clashes column gives symmetry related clashes, in the same way as for the Clashes column.

Mol	Chain	Non-H	H(model)	H(added)	Clashes	Symm-Clashes
1	A	1576	0	1525	159	0
1	L	1576	0	1525	159	0
2	B	1634	0	1617	187	0
2	H	1634	0	1617	181	0
All	All	6420	0	6284	640	0

Clashscore is defined as the number of clashes calculated for the entry per 1000 atoms (including hydrogens) of the entry. The overall clashscore for this entry is 50.

The worst 5 of 640 close contacts within the same asymmetric unit are listed below.

Atom-1	Atom-2	Distance(Å)	Clash(Å)
2:H:126:PRO:HB3	2:H:138:LEU:HB3	1.37	1.02
2:H:147:PRO:HB3	2:H:202:PRO:HG2	1.50	0.92
1:L:92:ASP:HB2	1:L:97:LEU:HD11	1.47	0.92
1:A:92:ASP:HB2	1:A:97:LEU:HD11	1.52	0.92
2:B:126:PRO:HB3	2:B:138:LEU:HB3	1.53	0.91

There are no symmetry-related clashes.

## 5.3 Torsion angles

### 5.3.1 Protein backbone ⓘ

In the following table, the Percentiles column shows the percent Ramachandran outliers of the chain as a percentile score with respect to all X-ray entries followed by that with respect to entries of similar resolution. The Analysed column shows the number of residues for which the backbone conformation was analysed, and the total number of residues.

Mol	Chain	Analysed	Favoured	Allowed	Outliers	Percentiles	
1	A	209/216 (97%)	151 (72%)	41 (20%)	17 (8%)	1	28
1	L	209/216 (97%)	147 (70%)	51 (24%)	11 (5%)	3	43
2	B	214/224 (96%)	160 (75%)	36 (17%)	18 (8%)	1	27
2	H	214/224 (96%)	156 (73%)	43 (20%)	15 (7%)	2	34
All	All	846/880 (96%)	614 (73%)	171 (20%)	61 (7%)	2	34

5 of 61 Ramachandran outliers are listed below:

Mol	Chain	Res	Type
1	L	28	ILE
1	L	42	LYS
1	L	158	ALA
2	H	106	GLY
1	A	28	ILE

### 5.3.2 Protein sidechains ⓘ

In the following table, the Percentiles column shows the percent sidechain outliers of the chain as a percentile score with respect to all X-ray entries followed by that with respect to entries of similar resolution. The Analysed column shows the number of residues for which the sidechain conformation was analysed, and the total number of residues.

Mol	Chain	Analysed	Rotameric	Outliers	Percentiles	
1	A	179/184 (97%)	161 (90%)	18 (10%)	11	52
1	L	179/184 (97%)	160 (89%)	19 (11%)	10	50
2	B	180/185 (97%)	155 (86%)	25 (14%)	5	35
2	H	180/185 (97%)	165 (92%)	15 (8%)	16	63
All	All	718/738 (97%)	641 (89%)	77 (11%)	10	49

5 of 77 residues with a non-rotameric sidechain are listed below:

Mol	Chain	Res	Type
1	A	3	VAL
1	A	116	VAL
2	B	178	LEU
1	A	4	LEU
1	A	27	THR

Some sidechains can be flipped to improve hydrogen bonding and reduce clashes. 5 of 15 such sidechains are listed below:

Mol	Chain	Res	Type
2	H	197	ASN
2	H	200	HIS
2	B	13	GLN
2	H	39	GLN
1	A	38	GLN

### 5.3.3 RNA ⓘ

There are no RNA chains in this entry.

## 5.4 Non-standard residues in protein, DNA, RNA chains ⓘ

There are no non-standard protein/DNA/RNA residues in this entry.

## 5.5 Carbohydrates ⓘ

There are no carbohydrates in this entry.

## 5.6 Ligand geometry ⓘ

There are no ligands in this entry.

## 5.7 Other polymers ⓘ

There are no such residues in this entry.

## 5.8 Polymer linkage issues

There are no chain breaks in this entry.

## 6 Fit of model and data ⓘ

### 6.1 Protein, DNA and RNA chains ⓘ

In the following table, the column labelled ‘#RSRZ> 2’ contains the number (and percentage) of RSRZ outliers, followed by percent RSRZ outliers for the chain as percentile scores relative to all X-ray entries and entries of similar resolution. The OWAB column contains the minimum, median, 95<sup>th</sup> percentile and maximum values of the occupancy-weighted average B-factor per residue. The column labelled ‘Q< 0.9’ lists the number of (and percentage) of residues with an average occupancy less than 0.9.

Mol	Chain	Analysed	<RSRZ>	#RSRZ>2	OWAB(Å <sup>2</sup> )	Q<0.9
1	A	211/216 (97%)	0.17	0 100 100	39, 78, 115, 137	0
1	L	211/216 (97%)	0.22	2 (0%) 81 62	36, 85, 139, 190	0
2	B	218/224 (97%)	0.26	1 (0%) 88 73	29, 85, 136, 199	0
2	H	218/224 (97%)	0.34	3 (1%) 72 49	29, 91, 157, 190	0
All	All	858/880 (97%)	0.25	6 (0%) 84 67	29, 83, 141, 199	0

The worst 5 of 6 RSRZ outliers are listed below:

Mol	Chain	Res	Type	RSRZ
2	H	198	VAL	3.1
2	H	160	THR	2.7
1	L	134	VAL	2.5
2	B	141	LEU	2.4
1	L	133	LEU	2.3

### 6.2 Non-standard residues in protein, DNA, RNA chains ⓘ

There are no non-standard protein/DNA/RNA residues in this entry.

### 6.3 Carbohydrates ⓘ

There are no carbohydrates in this entry.

### 6.4 Ligands ⓘ

There are no ligands in this entry.

## 6.5 Other polymers ⓘ

There are no such residues in this entry.