



# Full wwPDB X-ray Structure Validation Report ⓘ

Nov 13, 2014 – 08:23 PM EST

PDB ID : 4D69  
Title : SOYBEAN AGGLUTININ FROM GLYCINE MAX IN COMPLEX WITH THE ANTIGEN Tn  
Authors : Madariaga, D.; Martinez-Saez, N.; Somovilla, V.J.; Coelho, H.; Valero-Gonzalez, J.; Castro-Lopez, J.; Asensio, J.L.; Jimenez-Barbero, J.; Busto, J.H.; Avenoza, A.; Marcelo, F.; Hurtado-Guerrero, R.; Corzana, F.; Pereg-rina, J.M.  
Deposited on : 2014-11-10  
Resolution : 2.70 Å(reported)

This is a full wwPDB validation report for a publicly released PDB entry.  
We welcome your comments at [validation@mail.wwpdb.org](mailto:validation@mail.wwpdb.org)  
A user guide is available at <http://wwpdb.org/ValidationPDFNotes.html>

---

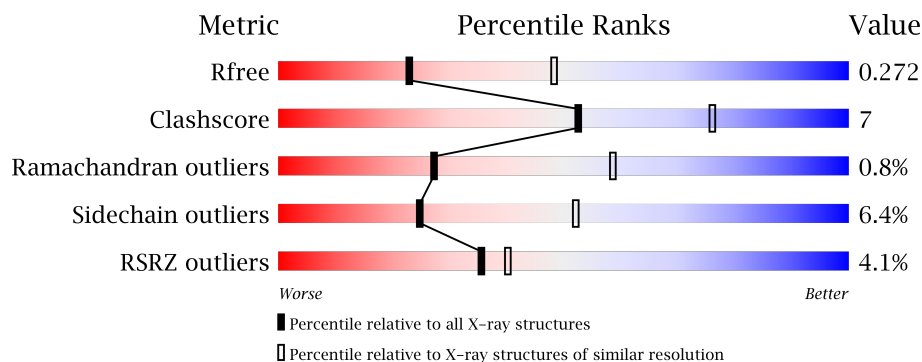
The following versions of software and data (see [references](#)) were used in the production of this report:

MolProbity : 4.02b-467  
Mogul : 1.16 November 2013  
Xtriage (Phenix) : dev-1439  
EDS : stable24195  
Percentile statistics : 21963  
Refmac : 5.8.0049  
CCP4 : 6.1.3  
Ideal geometry (proteins) : Engh & Huber (2001)  
Ideal geometry (DNA, RNA) : Parkinson et. al. (1996)  
Validation Pipeline (wwPDB-VP) : stable24195

# 1 Overall quality at a glance

The reported resolution of this entry is 2.70 Å.

Percentile scores (ranging between 0-100) for global validation metrics of the entry are shown in the following graphic. The table shows the number of entries on which the scores are based.



Metric	Whole archive (#Entries)	Similar resolution (#Entries, resolution range(Å))
$R_{free}$	66092	1557 (2.70-2.70)
Clashscore	79885	1939 (2.70-2.70)
Ramachandran outliers	78287	1905 (2.70-2.70)
Sidechain outliers	78261	1905 (2.70-2.70)
RSRZ outliers	66119	1559 (2.70-2.70)

The table below summarises the geometric issues observed across the polymeric chains and their fit to the electron density. The red, orange, yellow and green segments on the lower bar indicate the fraction of residues that contain outliers for  $\geq 3$ , 2, 1 and 0 types of geometric quality criteria. The upper red bar (where present) indicates the fraction of residues that have poor fit to the electron density.

Mol	Chain	Length	Quality of chain
1	A	253	
1	B	253	
1	C	253	
1	D	253	
1	E	253	
1	F	253	
1	G	253	
1	H	253	
1	I	253	
1	J	253	
1	K	253	
1	L	253	
2	O	5	
2	P	5	

Continued on next page...

Continued from previous page...

Mol	Chain	Length	Quality of chain
2	Q	5	<div><div></div></div>
2	R	5	<div><div></div></div>
2	S	5	<div><div></div></div>
2	T	5	<div><div></div></div>
2	U	5	<div><div></div></div>
2	V	5	<div><div></div></div>
2	W	5	<div><div></div></div>
2	X	5	<div><div></div></div>
2	Y	5	<div><div></div></div>
2	Z	5	<div><div></div></div>

## 2 Entry composition

There are 6 unique types of molecules in this entry. The entry contains 22512 atoms, of which 0 are hydrogen and 0 are deuterium.

In the tables below, the ZeroOcc column contains the number of atoms modelled with zero occupancy, the AltConf column contains the number of residues with at least one atom in alternate conformation and the Trace column contains the number of residues modelled with at most 2 atoms.

- Molecule 1 is a protein called LECTIN.

Mol	Chain	Residues	Atoms					ZeroOcc	AltConf	Trace
1	A	234	Total	C	N	O	S	0	0	0
			1809	1157	301	350	1			
1	B	232	Total	C	N	O	S	0	0	0
			1793	1148	297	347	1			
1	C	231	Total	C	N	O	S	0	0	0
			1790	1147	298	344	1			
1	D	234	Total	C	N	O	S	0	0	0
			1809	1157	301	350	1			
1	E	231	Total	C	N	O	S	0	0	0
			1790	1147	298	344	1			
1	F	234	Total	C	N	O	S	0	0	0
			1809	1157	301	350	1			
1	G	233	Total	C	N	O	S	0	0	0
			1803	1154	300	348	1			
1	H	232	Total	C	N	O	S	0	1	0
			1805	1156	300	348	1			
1	I	234	Total	C	N	O	S	0	0	0
			1809	1157	301	350	1			
1	J	232	Total	C	N	O	S	0	0	0
			1797	1151	299	346	1			
1	K	232	Total	C	N	O	S	0	1	0
			1805	1156	300	348	1			
1	L	232	Total	C	N	O	S	0	0	0
			1799	1152	299	347	1			

- Molecule 2 is a protein called SHORT ANTIGEN PEPTIDE.

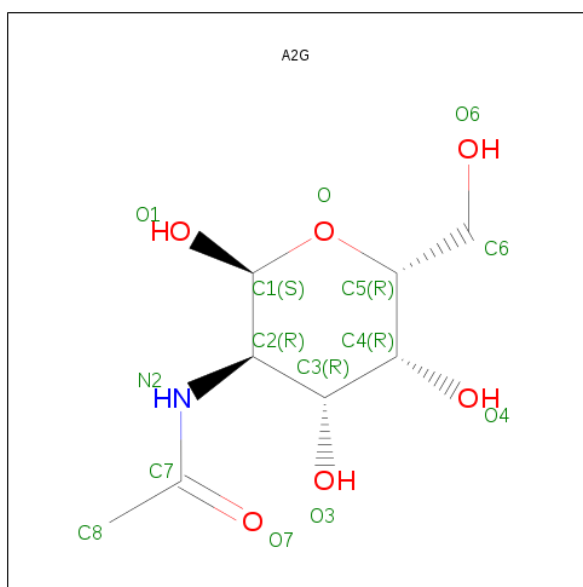
Mol	Chain	Residues	Atoms				ZeroOcc	AltConf	Trace
2	O	4	Total	C	N	O	0	0	0
			33	19	7	7			
2	P	2	Total	C	N	O	0	0	0
			15	8	2	5			

*Continued on next page...*

Continued from previous page...

Mol	Chain	Residues	Atoms				ZeroOcc	AltConf	Trace
2	Q	2	Total	C	N	O	0	0	0
			15	8	2	5			
2	R	3	Total	C	N	O	0	0	0
			26	14	6	6			
2	S	1	Total	C	N	O	0	0	0
			7	4	1	2			
2	T	2	Total	C	N	O	0	0	0
			15	8	2	5			
2	U	3	Total	C	N	O	0	0	0
			22	13	3	6			
2	V	3	Total	C	N	O	0	0	0
			26	14	6	6			
2	W	2	Total	C	N	O	0	0	0
			15	8	2	5			
2	X	4	Total	C	N	O	0	0	0
			33	19	7	7			
2	Y	3	Total	C	N	O	0	0	0
			26	14	6	6			
2	Z	2	Total	C	N	O	0	0	0
			15	8	2	5			

- Molecule 3 is SUGAR (N-ACETYL-2-DEOXY-2-AMINO-GALACTOSE) (three-letter code: A2G) (formula:  $C_8H_{15}NO_6$ ).



Mol	Chain	Residues	Atoms				ZeroOcc	AltConf
3	A	1	Total	C	N	O	0	0
			14	8	1	5		

Continued on next page...

*Continued from previous page...*

Mol	Chain	Residues	Atoms				ZeroOcc	AltConf
3	B	1	Total	C	N	O	0	0
			14	8	1	5		
3	C	1	Total	C	N	O	0	0
			14	8	1	5		
3	D	1	Total	C	N	O	0	0
			14	8	1	5		
3	E	1	Total	C	N	O	0	0
			14	8	1	5		
3	F	1	Total	C	N	O	0	0
			14	8	1	5		
3	G	1	Total	C	N	O	0	0
			14	8	1	5		
3	H	1	Total	C	N	O	0	0
			14	8	1	5		
3	I	1	Total	C	N	O	0	0
			14	8	1	5		
3	J	1	Total	C	N	O	0	0
			14	8	1	5		
3	K	1	Total	C	N	O	0	0
			14	8	1	5		
3	L	1	Total	C	N	O	0	0
			14	8	1	5		

- Molecule 4 is MANGANESE (II) ION (three-letter code: MN) (formula: Mn).

Mol	Chain	Residues	Atoms		ZeroOcc	AltConf
4	G	2	Total	Mn	0	0
			2	2		
4	J	2	Total	Mn	0	0
			2	2		
4	D	2	Total	Mn	0	0
			2	2		
4	K	2	Total	Mn	0	0
			2	2		
4	E	2	Total	Mn	0	0
			2	2		
4	H	2	Total	Mn	0	0
			2	2		
4	B	2	Total	Mn	0	0
			2	2		
4	I	2	Total	Mn	0	0
			2	2		

*Continued on next page...*

*Continued from previous page...*

Mol	Chain	Residues	Atoms		ZeroOcc	AltConf
4	C	2	Total	Mn	0	0
			2	2		
4	A	2	Total	Mn	0	0
			2	2		
4	L	2	Total	Mn	0	0
			2	2		
4	F	2	Total	Mn	0	0
			2	2		

- Molecule 5 is a polymer of unknown type called SUGAR (2-MER).

Mol	Chain	Residues	Atoms				ZeroOcc	AltConf
5	A	2	Total	C	N	O	0	0
			28	16	2	10		
5	B	2	Total	C	N	O	0	0
			28	16	2	10		
5	C	2	Total	C	N	O	0	0
			28	16	2	10		
5	D	2	Total	C	N	O	0	0
			28	16	2	10		
5	E	2	Total	C	N	O	0	0
			28	16	2	10		
5	F	2	Total	C	N	O	0	0
			28	16	2	10		
5	G	2	Total	C	N	O	0	0
			28	16	2	10		
5	H	2	Total	C	N	O	0	0
			28	16	2	10		
5	I	2	Total	C	N	O	0	0
			28	16	2	10		
5	J	2	Total	C	N	O	0	0
			28	16	2	10		
5	K	2	Total	C	N	O	0	0
			28	16	2	10		
5	L	2	Total	C	N	O	0	0
			28	16	2	10		

- Molecule 6 is water.

Mol	Chain	Residues	Atoms		ZeroOcc	AltConf
6	A	11	Total	O	0	0
			11	11		

*Continued on next page...*

*Continued from previous page...*

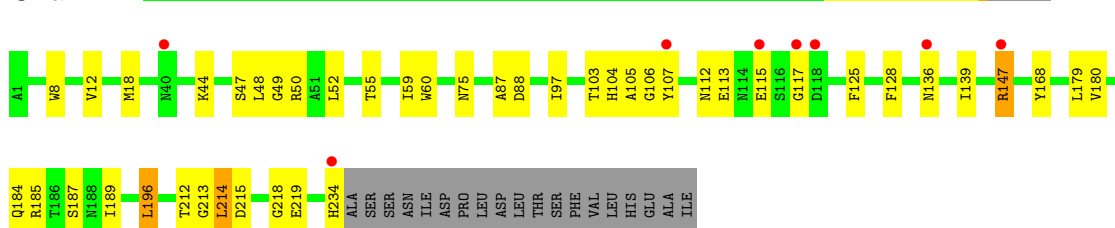
Mol	Chain	Residues	Atoms		ZeroOcc	AltConf
6	B	7	Total 7	O 7	0	0
6	C	9	Total 9	O 9	0	0
6	D	16	Total 16	O 16	0	0
6	E	11	Total 11	O 11	0	0
6	F	10	Total 10	O 10	0	0
6	G	7	Total 7	O 7	0	0
6	H	11	Total 11	O 11	0	0
6	I	12	Total 12	O 12	0	0
6	J	5	Total 5	O 5	0	0
6	K	7	Total 7	O 7	0	0
6	L	12	Total 12	O 12	0	0

### 3 Residue-property plots

These plots are drawn for all protein, RNA and DNA chains in the entry. The first graphic for a chain summarises the proportions of errors displayed in the second graphic. The second graphic shows the sequence view annotated by issues in geometry and electron density. Residues are color-coded according to the number of geometric quality criteria for which they contain at least one outlier: green = 0, yellow = 1, orange = 2 and red = 3 or more. A red dot above a residue indicates a poor fit to the electron density ( $RSRZ > 2$ ). Stretches of 2 or more consecutive residues without any outlier are shown as a green connector. Residues present in the sample, but not in the model, are shown in grey.

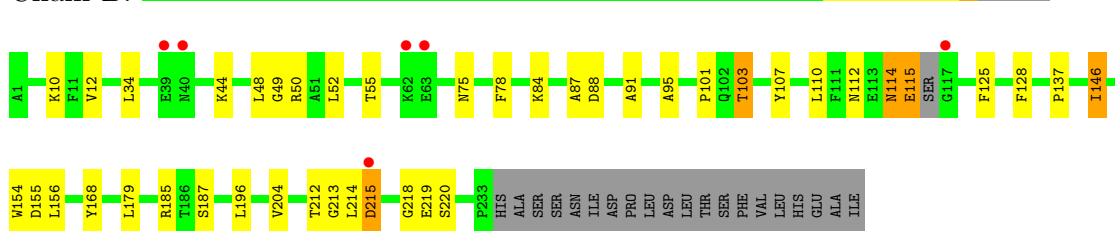
#### • Molecule 1: LECTIN

Chain A:



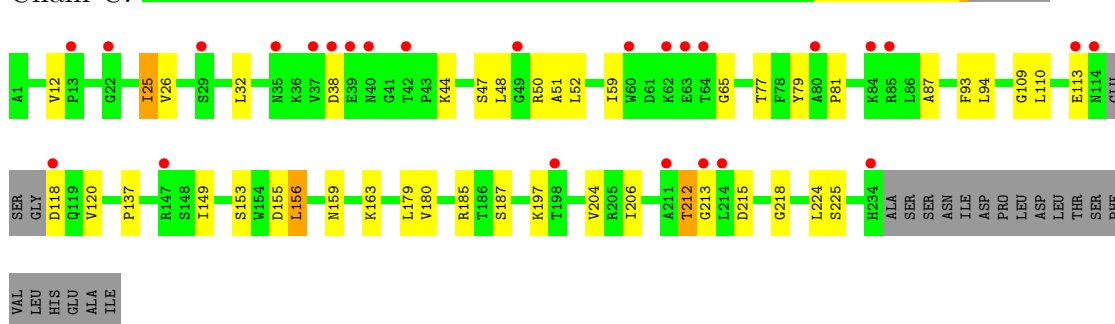
#### • Molecule 1: LECTIN

Chain B:



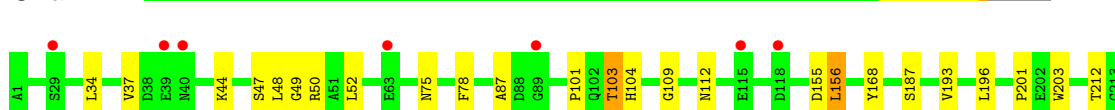
#### • Molecule 1: LECTIN

Chain C:



#### • Molecule 1: LECTIN

Chain D:

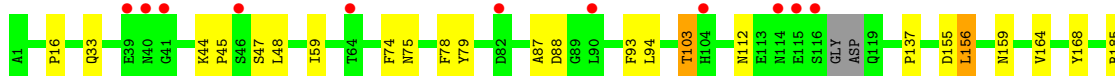






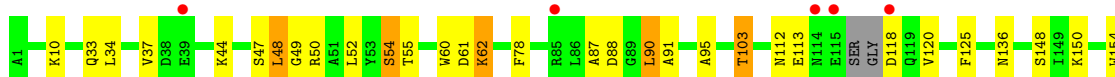
- Molecule 1: LECTIN

Chain J:



- Molecule 1: LECTIN

Chain K:



- Molecule 1: LECTIN

Chain L:



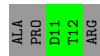
- Molecule 2: SHORT ANTIGEN PEPTIDE

Chain O:



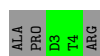
- Molecule 2: SHORT ANTIGEN PEPTIDE

Chain P:



- Molecule 2: SHORT ANTIGEN PEPTIDE

Chain Q:



- Molecule 2: SHORT ANTIGEN PEPTIDE

Chain R: 

ALA	PRO	D3	T4	R5
-----	-----	----	----	----

- Molecule 2: SHORT ANTIGEN PEPTIDE

Chain S: 

ALA	PRO	ASP	T4	ARG
-----	-----	-----	----	-----

- Molecule 2: SHORT ANTIGEN PEPTIDE

Chain T: 

ALA	PRO	D3	T4	ARG
-----	-----	----	----	-----

- Molecule 2: SHORT ANTIGEN PEPTIDE

Chain U: 

ALA	P2	D3	T4	ARG
-----	----	----	----	-----

- Molecule 2: SHORT ANTIGEN PEPTIDE

Chain V: 

ALA	PRO	D3	T4	R5
-----	-----	----	----	----

- Molecule 2: SHORT ANTIGEN PEPTIDE

Chain W: 

ALA	PRO	D3	T4	ARG
-----	-----	----	----	-----

- Molecule 2: SHORT ANTIGEN PEPTIDE

Chain X: 

ALA	P2	D3	T4	R5
-----	----	----	----	----

- Molecule 2: SHORT ANTIGEN PEPTIDE

Chain Y: 

ALA	PRO	D3	T4	R5
-----	-----	----	----	----

- Molecule 2: SHORT ANTIGEN PEPTIDE

Chain Z: 

ALA
PRO
D3
T4
ARG

## 4 Data and refinement statistics

Property	Value	Source
Space group	P 32	Depositor
Cell constants a, b, c, $\alpha$ , $\beta$ , $\gamma$	114.23Å 114.23Å 202.89Å 90.00° 90.00° 120.00°	Depositor
Resolution (Å)	202.89 – 2.70 19.96 – 2.70	Depositor EDS
% Data completeness (in resolution range)	99.8 (202.89-2.70) 100.0 (19.96-2.70)	Depositor EDS
$R_{merge}$	0.12	Depositor
$R_{sym}$	(Not available)	Depositor
$\langle I/\sigma(I) \rangle$ <sup>1</sup>	1.96 (at 2.71Å)	Xtriage
Refinement program	REFMAC 5.8.0049	Depositor
R, $R_{free}$	0.230 , 0.274 0.233 , 0.272	Depositor DCC
$R_{free}$ test set	2232 reflections (2.83%)	DCC
Wilson B-factor (Å <sup>2</sup> )	48.9	Xtriage
Anisotropy	0.197	Xtriage
Bulk solvent $k_{sol}$ (e/Å <sup>3</sup> ), $B_{sol}$ (Å <sup>2</sup> )	0.31 , 23.5	EDS
Estimated twinning fraction	0.009 for -h,-k,l 0.037 for h,-h-k,-l 0.024 for -k,-h,-l	Xtriage
L-test for twinning	$\langle  L  \rangle = 0.49$ , $\langle L^2 \rangle = 0.32$	Xtriage
Outliers	0 of 81145 reflections	Xtriage
$F_o, F_c$ correlation	0.92	EDS
Total number of atoms	22512	wwPDB-VP
Average B, all atoms (Å <sup>2</sup> )	55.0	wwPDB-VP

Xtriage's analysis on translational NCS is as follows: *The largest off-origin peak in the Patterson function is 18.22% of the height of the origin peak. No significant pseudotranslation is detected.*

<sup>1</sup>Intensities estimated from amplitudes.

## 5 Model quality

### 5.1 Standard geometry

Bond lengths and bond angles in the following residue types are not validated in this section: MN, NAG, A2G

The Z score for a bond length (or angle) is the number of standard deviations the observed value is removed from the expected value. A bond length (or angle) with  $|Z| > 5$  is considered an outlier worth inspection. RMSZ is the root-mean-square of all Z scores of the bond lengths (or angles).

Mol	Chain	Bond lengths		Bond angles	
		RMSZ	# $ Z  > 5$	RMSZ	# $ Z  > 5$
1	A	0.61	0/1858	0.77	1/2540 (0.0%)
1	B	0.57	0/1840	0.78	2/2514 (0.1%)
1	C	0.62	0/1838	0.77	0/2512
1	D	0.61	0/1858	0.77	0/2540
1	E	0.75	1/1838 (0.1%)	0.83	3/2512 (0.1%)
1	F	0.63	0/1858	0.80	1/2540 (0.0%)
1	G	0.59	0/1851	0.75	1/2529 (0.0%)
1	H	0.77	2/1856 (0.1%)	0.86	4/2536 (0.2%)
1	I	0.61	0/1858	0.77	2/2540 (0.1%)
1	J	0.56	0/1845	0.76	1/2521 (0.0%)
1	K	0.77	1/1856 (0.1%)	0.79	3/2536 (0.1%)
1	L	0.61	0/1847	0.83	2/2524 (0.1%)
2	O	0.73	0/33	0.83	0/43
2	P	0.78	0/14	0.74	0/18
2	Q	0.95	0/14	0.70	0/18
2	R	0.70	0/25	0.86	0/32
2	S	0.92	0/6	0.55	0/7
2	T	1.02	0/14	0.76	0/18
2	U	0.71	0/22	0.70	0/29
2	V	0.79	0/25	0.80	0/32
2	W	0.87	0/14	1.21	0/18
2	X	0.52	0/33	1.12	0/43
2	Y	0.77	0/25	1.08	0/32
2	Z	0.70	0/14	1.11	0/18
All	All	0.65	4/22442 (0.0%)	0.79	20/30652 (0.1%)

Chiral center outliers are detected by calculating the chiral volume of a chiral center and verifying if the center is modelled as a planar moiety or with the opposite hand. A planarity outlier is detected by checking planarity of atoms in a peptide group, atoms in a mainchain group or atoms of a sidechain that are expected to be planar.

Mol	Chain	#Chirality outliers	#Planarity outliers
1	H	0	2
1	K	0	1
All	All	0	3

All (4) bond length outliers are listed below:

Mol	Chain	Res	Type	Atoms	Z	Observed(Å)	Ideal(Å)
1	K	54	SER	C-N	-19.55	0.89	1.34
1	E	54	SER	C-N	-16.63	0.95	1.34
1	H	54	SER	C-N	-16.57	0.95	1.34
1	H	55	THR	C-N	-13.48	1.08	1.34

All (20) bond angle outliers are listed below:

Mol	Chain	Res	Type	Atoms	Z	Observed(°)	Ideal(°)
1	L	135	PRO	N-CA-C	13.28	146.63	112.10
1	L	136	ASN	N-CA-CB	-12.82	87.53	110.60
1	H	55	THR	O-C-N	-10.88	100.42	121.10
1	E	54	SER	C-N-CA	10.39	147.67	121.70
1	B	115	GLU	CB-CA-C	-9.74	90.92	110.40
1	E	54	SER	O-C-N	-8.60	108.94	122.70
1	B	115	GLU	N-CA-C	-8.59	87.80	111.00
1	H	55	THR	CA-C-N	7.56	138.26	117.10
1	K	54	SER	O-C-N	-6.82	111.79	122.70
1	K	155	ASP	CB-CG-OD1	5.99	123.69	118.30
1	F	155	ASP	CB-CG-OD1	5.92	123.62	118.30
1	J	216	ILE	C-N-CD	5.86	140.70	128.40
1	I	118	ASP	CB-CG-OD1	5.84	123.56	118.30
1	E	54	SER	CA-C-N	5.73	129.80	117.20
1	A	55	THR	C-N-CD	5.59	140.14	128.40
1	G	155	ASP	CB-CG-OD1	-5.50	113.35	118.30
1	H	185	ARG	NE-CZ-NH2	-5.49	117.55	120.30
1	I	118	ASP	CB-CG-OD2	-5.18	113.64	118.30
1	H	185	ARG	NE-CZ-NH1	5.17	122.88	120.30
1	K	54	SER	C-N-CA	5.03	134.28	121.70

There are no chirality outliers.

All (3) planarity outliers are listed below:

Mol	Chain	Res	Type	Group
1	H	54	SER	Mainchain,Peptide
1	K	54	SER	Peptide

## 5.2 Close contacts ⓘ

In the following table, the Non-H and H(model) columns list the number of non-hydrogen atoms and hydrogen atoms in the chain respectively. The H(added) column lists the number of hydrogens added by MolProbity. The Clashes column lists the number of clashes within the asymmetric unit, and the number in parentheses is this value normalized per 1000 atoms of the molecule in the chain. The Symm-Clashes column gives symmetry related clashes, in the same way as for the Clashes column.

Mol	Chain	Non-H	H(model)	H(added)	Clashes	Symm-Clashes
1	A	1809	0	1767	31	0
1	B	1793	0	1754	25	0
1	C	1790	0	1752	31	0
1	D	1809	0	1767	18	0
1	E	1790	0	1751	25	1
1	F	1809	0	1767	39	0
1	G	1803	0	1761	19	1
1	H	1805	0	1765	18	0
1	I	1809	0	1767	30	0
1	J	1797	0	1759	29	0
1	K	1805	0	1765	29	0
1	L	1799	0	1758	20	0
2	O	33	0	30	2	0
2	P	15	0	9	0	0
2	Q	15	0	9	0	0
2	R	26	0	22	1	0
2	S	7	0	5	0	0
2	T	15	0	9	0	0
2	U	22	0	17	0	0
2	V	26	0	22	1	0
2	W	15	0	9	0	0
2	X	33	0	30	10	0
2	Y	26	0	22	1	0
2	Z	15	0	9	0	0
3	A	14	0	13	2	0
3	B	14	0	13	2	0
3	C	14	0	13	0	0
3	D	14	0	13	0	0
3	E	14	0	13	0	0
3	F	14	0	13	5	0
3	G	14	0	13	0	0
3	H	14	0	13	0	0
3	I	14	0	13	0	0
3	J	14	0	13	9	0
3	K	14	0	13	0	0

*Continued on next page...*

*Continued from previous page...*

Mol	Chain	Non-H	H(model)	H(added)	Clashes	Symm-Clashes
3	L	14	0	13	0	0
4	A	2	0	0	0	0
4	B	2	0	0	0	0
4	C	2	0	0	0	0
4	D	2	0	0	0	0
4	E	2	0	0	0	0
4	F	2	0	0	0	0
4	G	2	0	0	0	0
4	H	2	0	0	0	0
4	I	2	0	0	0	0
4	J	2	0	0	0	0
4	K	2	0	0	0	0
4	L	2	0	0	0	0
5	A	28	0	25	3	0
5	B	28	0	25	1	0
5	C	28	0	25	2	0
5	D	28	0	25	1	0
5	E	28	0	25	1	0
5	F	28	0	25	1	0
5	G	28	0	25	1	0
5	H	28	0	25	1	0
5	I	28	0	25	1	0
5	J	28	0	25	1	0
5	K	28	0	25	1	0
5	L	28	0	25	1	0
6	A	11	0	0	0	0
6	B	7	0	0	1	0
6	C	9	0	0	0	0
6	D	16	0	0	0	0
6	E	11	0	0	0	0
6	F	10	0	0	0	0
6	G	7	0	0	0	0
6	H	11	0	0	1	0
6	I	12	0	0	1	0
6	J	5	0	0	1	0
6	K	7	0	0	1	0
6	L	12	0	0	1	0
All	All	22512	0	21782	313	1

Clashscore is defined as the number of clashes calculated for the entry per 1000 atoms (including hydrogens) of the entry. The overall clashscore for this entry is 7.

All (313) close contacts within the same asymmetric unit are listed below.

Atom-1	Atom-2	Distance(Å)	Clash(Å)
1:F:114:ASN:OD1	1:F:116:SER:N	1.74	1.20
1:F:87:ALA:HB2	1:F:218:GLY:HA3	1.25	1.16
1:J:87:ALA:HB2	1:J:218:GLY:HA3	1.21	1.11
1:J:216:ILE:HG12	3:J:1235:A2G:C6	1.83	1.09
1:A:87:ALA:HB2	1:A:218:GLY:HA3	1.35	1.08
1:H:87:ALA:HB2	1:H:218:GLY:HA3	1.37	1.06
1:C:87:ALA:HB2	1:C:218:GLY:HA3	1.33	1.05
1:L:87:ALA:HB2	1:L:218:GLY:HA3	1.37	1.05
1:D:87:ALA:HB2	1:D:218:GLY:HA3	1.36	1.04
1:G:87:ALA:HB2	1:G:218:GLY:HA3	1.39	1.04
1:B:87:ALA:HB2	1:B:218:GLY:HA3	1.40	1.04
1:E:87:ALA:HB2	1:E:218:GLY:HA3	1.35	1.03
1:J:216:ILE:HD11	3:J:1235:A2G:H14	1.41	0.99
1:I:87:ALA:HB2	1:I:218:GLY:HA3	1.47	0.96
1:A:105:ALA:O	1:A:107:TYR:N	2.00	0.93
1:J:216:ILE:CD1	3:J:1235:A2G:H14	1.96	0.93
1:K:87:ALA:HB2	1:K:218:GLY:HA3	1.52	0.91
1:J:216:ILE:CG1	3:J:1235:A2G:C6	2.52	0.88
1:F:44:LYS:O	1:F:212:THR:HG21	1.76	0.85
1:K:44:LYS:O	1:K:212:THR:HG21	1.79	0.83
1:J:44:LYS:O	1:J:212:THR:HG21	1.81	0.81
1:F:113:GLU:OE1	1:F:113:GLU:N	2.12	0.81
1:G:44:LYS:O	1:G:212:THR:HG21	1.81	0.80
1:H:44:LYS:O	1:H:212:THR:HG21	1.81	0.80
1:A:136:ASN:OD1	1:G:149:ILE:HB	1.82	0.79
1:D:44:LYS:O	1:D:212:THR:HG21	1.84	0.77
1:J:216:ILE:HG12	3:J:1235:A2G:H6	1.66	0.77
3:F:1239:A2G:H8A	2:X:5:ARG:HG3	1.67	0.77
1:J:216:ILE:CG1	3:J:1235:A2G:H14	2.12	0.77
1:F:8:TRP:CZ2	1:F:18:MET:HE1	2.20	0.76
1:L:44:LYS:O	1:L:212:THR:HG21	1.86	0.76
1:B:114:ASN:O	1:B:115:GLU:C	2.25	0.74
1:I:44:LYS:O	1:I:212:THR:HG21	1.88	0.74
1:G:75:ASN:HD21	5:G:1238:NAG:H83	1.52	0.73
1:A:75:ASN:HD21	5:A:1238:NAG:H83	1.55	0.72
1:B:75:ASN:HD21	5:B:1237:NAG:H83	1.55	0.71
1:F:114:ASN:OD1	1:F:115:GLU:N	2.23	0.71
1:J:215:ASP:N	1:J:215:ASP:OD1	2.22	0.70
1:B:88:ASP:HA	6:B:2003:HOH:O	1.90	0.70
1:C:44:LYS:O	1:C:212:THR:HG21	1.91	0.69
1:H:75:ASN:HD21	5:H:1238:NAG:H83	1.58	0.69
1:J:87:ALA:CB	1:J:218:GLY:HA3	2.12	0.68
1:C:87:ALA:CB	1:C:218:GLY:HA3	2.18	0.68

Continued on next page...

*Continued from previous page...*

Atom-1	Atom-2	Distance(Å)	Clash(Å)
1:F:8:TRP:CH2	1:F:18:MET:HE1	2.29	0.67
1:E:44:LYS:O	1:E:212:THR:HG21	1.96	0.66
1:A:44:LYS:O	1:A:212:THR:HG21	1.96	0.66
1:C:87:ALA:HB1	1:C:213:GLY:N	2.11	0.66
1:G:87:ALA:HB1	1:G:213:GLY:N	2.11	0.66
1:B:44:LYS:O	1:B:212:THR:HG21	1.97	0.65
1:J:79:TYR:HD1	1:J:159:ASN:HD21	1.45	0.65
1:F:59:ILE:HG23	1:F:196:LEU:HD23	1.78	0.64
1:J:45:PRO:HB3	1:J:214:LEU:O	1.99	0.63
1:J:75:ASN:HD21	5:J:1238:NAG:H83	1.65	0.62
1:K:87:ALA:HB1	1:K:213:GLY:N	2.14	0.61
5:C:1238:NAG:O3	5:C:1238:NAG:H82	1.99	0.61
1:F:87:ALA:CB	1:F:218:GLY:HA3	2.17	0.61
1:D:48:LEU:HD11	1:D:109:GLY:CA	2.31	0.61
1:E:75:ASN:HD21	5:E:1238:NAG:H83	1.66	0.61
1:I:75:ASN:HD21	5:I:1238:NAG:H83	1.66	0.61
1:J:216:ILE:HG12	3:J:1235:A2G:O6	2.00	0.60
1:B:87:ALA:HB1	1:B:213:GLY:N	2.16	0.60
1:J:74:PHE:CZ	1:J:164:VAL:HG11	2.37	0.60
1:I:137:PRO:HG2	1:I:156:LEU:HD11	1.84	0.60
1:C:77:THR:HG23	1:C:224:LEU:HD11	1.85	0.59
1:K:48:LEU:C	1:K:48:LEU:HD23	2.23	0.59
1:A:48:LEU:C	1:A:48:LEU:HD23	2.24	0.58
1:I:50:ARG:HD2	1:I:101:PRO:HG3	1.86	0.58
1:G:87:ALA:CB	1:G:218:GLY:HA3	2.25	0.58
1:C:79:TYR:HD1	1:C:159:ASN:HD21	1.52	0.58
1:F:48:LEU:HD11	1:F:109:GLY:HA3	1.86	0.58
1:E:78:PHE:CE1	1:E:158:ASN:HA	2.39	0.58
1:F:78:PHE:CE1	1:F:158:ASN:HA	2.39	0.58
1:C:137:PRO:HG2	1:C:156:LEU:HD11	1.85	0.57
1:H:88:ASP:HA	6:H:2009:HOH:O	2.03	0.57
1:I:139:ILE:HG13	1:I:154:TRP:HB2	1.85	0.57
1:K:90:LEU:HD23	1:K:90:LEU:C	2.25	0.57
1:E:155:ASP:OD1	1:G:135:PRO:HG3	2.05	0.57
1:K:61:ASP:HB2	1:K:232:LEU:HD21	1.87	0.57
1:A:88:ASP:OD2	1:A:105:ALA:HB1	2.05	0.57
1:J:137:PRO:HG2	1:J:156:LEU:HD11	1.85	0.57
1:A:103:THR:OG1	1:A:112:ASN:ND2	2.38	0.56
1:A:48:LEU:HD23	1:A:49:GLY:N	2.20	0.56
1:C:59:ILE:HG12	1:C:204:VAL:HG22	1.87	0.56
1:K:88:ASP:HA	6:K:2005:HOH:O	2.05	0.56
1:A:179:LEU:HD23	1:A:180:VAL:N	2.21	0.56

*Continued on next page...*

*Continued from previous page...*

Atom-1	Atom-2	Distance(Å)	Clash(Å)
1:E:149:ILE:HB	1:F:136:ASN:OD1	2.05	0.56
1:H:12:VAL:O	1:H:15:GLN:HG2	2.05	0.56
1:I:6:PHE:CE2	1:I:228:PHE:HB3	2.41	0.56
1:G:179:LEU:HD21	1:G:181:TYR:CE2	2.41	0.56
1:A:107:TYR:CD1	1:A:107:TYR:N	2.73	0.56
1:G:48:LEU:HD11	1:G:109:GLY:HA3	1.87	0.56
1:D:48:LEU:HD11	1:D:109:GLY:HA3	1.88	0.55
1:B:125:PHE:CE2	1:B:179:LEU:HD12	2.41	0.55
1:B:114:ASN:HA	2:V:5:ARG:HG2	1.88	0.55
2:X:4:THR:O	2:X:5:ARG:O	2.24	0.55
1:I:94:LEU:HG	1:I:206:ILE:HG22	1.88	0.54
1:E:39:GLU:CD	1:E:39:GLU:N	2.60	0.54
1:L:75:ASN:HD21	5:L:1238:NAG:H83	1.73	0.54
1:F:8:TRP:CZ2	1:F:18:MET:CE	2.91	0.54
1:L:110:LEU:HD21	1:L:209:SER:HB2	1.90	0.54
2:X:5:ARG:CG	2:X:5:ARG:HH11	2.19	0.54
3:F:1239:A2G:H8A	2:X:5:ARG:CG	2.36	0.54
1:K:47:SER:H	1:K:212:THR:HG22	1.73	0.54
1:L:179:LEU:HD23	1:L:180:VAL:N	2.23	0.54
1:J:87:ALA:HB1	1:J:213:GLY:N	2.23	0.53
1:F:113:GLU:HB3	2:X:5:ARG:HH21	1.73	0.53
1:A:48:LEU:HD12	1:A:104:HIS:HA	1.90	0.53
1:F:48:LEU:HD11	1:F:109:GLY:CA	2.38	0.53
1:C:137:PRO:CG	1:C:156:LEU:HD11	2.39	0.52
1:E:48:LEU:C	1:E:48:LEU:HD23	2.29	0.52
1:E:6:PHE:CE1	1:E:228:PHE:HB3	2.45	0.52
1:L:58:HIS:HB2	1:L:203:TRP:CH2	2.44	0.52
1:L:87:ALA:HB1	1:L:213:GLY:N	2.25	0.52
1:A:8:TRP:HZ2	1:A:18:MET:HE1	1.75	0.52
1:B:91:ALA:HB3	1:B:110:LEU:HD11	1.91	0.52
1:C:113:GLU:O	1:G:37:VAL:O	2.28	0.51
1:D:75:ASN:HD21	5:D:1238:NAG:H83	1.74	0.51
2:X:5:ARG:NH1	2:X:5:ARG:HG2	2.25	0.51
1:F:114:ASN:HD21	1:F:116:SER:C	2.14	0.51
1:K:168:TYR:CE2	1:K:196:LEU:HD22	2.46	0.51
1:H:21:GLN:HB2	1:H:50:ARG:HB2	1.93	0.51
1:K:154:TRP:CE2	1:K:156:LEU:HD23	2.46	0.51
1:I:59:ILE:HG22	1:I:60:TRP:HD1	1.76	0.50
5:K:1238:NAG:H61	5:K:1239:NAG:C1	2.42	0.50
1:B:107:TYR:HA	1:B:146:ILE:HD13	1.93	0.50
1:J:216:ILE:CD1	3:J:1235:A2G:C6	2.77	0.50
2:R:3:ASP:OD1	2:R:4:THR:N	2.44	0.50

*Continued on next page...*

*Continued from previous page...*

Atom-1	Atom-2	Distance(Å)	Clash(Å)
1:F:97:ILE:HG23	1:F:205:ARG:NH1	2.27	0.50
1:J:88:ASP:HA	6:J:2003:HOH:O	2.11	0.50
1:K:90:LEU:HD23	1:K:91:ALA:N	2.27	0.50
5:A:1239:NAG:H61	5:A:1239:NAG:H2	1.92	0.50
1:C:149:ILE:HD12	1:K:136:ASN:OD1	2.10	0.50
1:D:78:PHE:CZ	1:D:156:LEU:HD22	2.47	0.50
1:K:179:LEU:HD23	1:K:180:VAL:N	2.26	0.50
1:A:97:ILE:H	1:A:97:ILE:HD12	1.77	0.49
1:D:50:ARG:HD2	1:D:101:PRO:HG3	1.94	0.49
1:E:90:LEU:HG	1:E:91:ALA:N	2.27	0.49
2:O:3:ASP:OD1	2:O:4:THR:N	2.45	0.49
1:H:103:THR:OG1	1:H:112:ASN:ND2	2.46	0.49
1:A:147:ARG:O	1:A:147:ARG:HG3	2.12	0.49
1:E:48:LEU:HD12	1:E:104:HIS:HB3	1.93	0.49
1:K:60:TRP:HZ3	1:K:62:LYS:HG2	1.78	0.49
1:F:115:GLU:O	1:F:116:SER:HB3	2.13	0.48
1:L:81:PRO:HD2	1:L:218:GLY:O	2.13	0.48
1:B:128:PHE:CE1	3:B:1234:A2G:H3	2.48	0.48
1:B:168:TYR:CE2	1:B:196:LEU:HD22	2.48	0.48
1:B:87:ALA:CB	1:B:218:GLY:HA3	2.27	0.48
1:A:59:ILE:HG22	1:A:60:TRP:HD1	1.79	0.48
1:F:47:SER:H	1:F:212:THR:HG22	1.78	0.48
1:F:59:ILE:CG2	1:F:196:LEU:HD23	2.44	0.48
1:B:215:ASP:OD1	3:B:1234:A2G:O6	2.31	0.48
1:F:115:GLU:O	1:F:116:SER:CB	2.62	0.48
1:H:94:LEU:HG	1:H:206:ILE:HG22	1.94	0.48
1:B:103:THR:OG1	1:B:112:ASN:ND2	2.47	0.47
1:C:48:LEU:HD11	1:C:109:GLY:HA3	1.95	0.47
1:C:25:ILE:HD12	1:C:26:VAL:C	2.35	0.47
1:G:103:THR:OG1	1:G:112:ASN:ND2	2.47	0.47
1:K:113:GLU:OE1	2:Y:5:ARG:NH1	2.46	0.47
1:K:47:SER:N	1:K:212:THR:HG22	2.29	0.47
1:E:59:ILE:HD13	1:E:68:ALA:HB3	1.97	0.47
1:F:150:LYS:HG2	1:F:190:LEU:HD11	1.96	0.47
1:A:87:ALA:HB1	1:A:213:GLY:N	2.30	0.47
1:E:34:LEU:O	1:E:49:GLY:HA3	2.15	0.47
1:F:75:ASN:HD21	5:F:1235:NAG:H83	1.80	0.47
1:J:214:LEU:HB3	1:J:215:ASP:OD1	2.15	0.47
1:K:48:LEU:HD23	1:K:49:GLY:N	2.30	0.47
1:I:21:GLN:HB2	1:I:50:ARG:HB2	1.97	0.47
1:E:103:THR:OG1	1:E:112:ASN:ND2	2.47	0.47
1:B:78:PHE:HB2	1:B:220:SER:O	2.15	0.47

*Continued on next page...*

*Continued from previous page...*

Atom-1	Atom-2	Distance(Å)	Clash(Å)
1:C:110:LEU:HD22	1:C:120:VAL:HG11	1.97	0.47
1:H:90:LEU:HG	1:H:91:ALA:N	2.30	0.47
1:J:103:THR:OG1	1:J:112:ASN:ND2	2.48	0.47
1:C:59:ILE:CG1	1:C:204:VAL:HG22	2.45	0.46
1:F:50:ARG:HD2	1:F:101:PRO:HG3	1.96	0.46
1:C:38:ASP:N	1:C:44:LYS:HE2	2.30	0.46
1:D:47:SER:H	1:D:212:THR:CG2	2.29	0.46
1:I:103:THR:HB	1:I:107:TYR:HB2	1.97	0.46
1:I:95:ALA:O	1:I:204:VAL:HB	2.14	0.46
1:K:47:SER:H	1:K:212:THR:CG2	2.28	0.46
1:D:47:SER:N	1:D:212:THR:HG22	2.31	0.46
1:H:87:ALA:HB1	1:H:213:GLY:N	2.31	0.46
1:I:103:THR:OG1	1:I:112:ASN:ND2	2.48	0.46
1:B:95:ALA:O	1:B:204:VAL:HB	2.16	0.45
1:C:32:LEU:HD11	1:C:51:ALA:CB	2.46	0.45
1:C:94:LEU:HG	1:C:206:ILE:HG22	1.96	0.45
1:D:47:SER:H	1:D:212:THR:HG22	1.81	0.45
1:E:132:TRP:HB2	1:E:147:ARG:HG2	1.97	0.45
1:H:59:ILE:HG12	1:H:204:VAL:HG22	1.97	0.45
1:K:48:LEU:C	1:K:48:LEU:CD2	2.84	0.45
1:F:8:TRP:HZ2	1:F:18:MET:HE1	1.74	0.45
1:H:34:LEU:O	1:H:49:GLY:HA3	2.16	0.45
1:K:78:PHE:CE1	1:K:158:ASN:HA	2.51	0.45
1:D:34:LEU:O	1:D:49:GLY:HA3	2.15	0.45
1:F:215:ASP:OD1	3:F:1239:A2G:O6	2.29	0.45
1:L:48:LEU:HD11	1:L:109:GLY:HA3	1.97	0.45
1:F:47:SER:N	1:F:212:THR:HG22	2.32	0.45
1:C:137:PRO:HG2	1:C:156:LEU:CD1	2.47	0.45
1:I:152:THR:HB	1:I:190:LEU:HD13	1.97	0.45
1:A:168:TYR:CE2	1:A:196:LEU:HD22	2.52	0.45
1:L:146:ILE:O	6:L:2006:HOH:O	2.20	0.45
1:I:34:LEU:O	1:I:49:GLY:HA3	2.17	0.45
1:A:87:ALA:HB3	1:A:219:GLU:H	1.81	0.45
1:H:79:TYR:HD1	1:H:159:ASN:HD21	1.65	0.45
1:A:179:LEU:HD23	1:A:179:LEU:C	2.38	0.44
1:B:154:TRP:CE2	1:B:156:LEU:HD23	2.52	0.44
1:E:58:HIS:HB2	1:E:203:TRP:CH2	2.51	0.44
1:L:48:LEU:CD1	1:L:109:GLY:HA3	2.46	0.44
1:K:103:THR:OG1	1:K:112:ASN:ND2	2.47	0.44
1:J:216:ILE:CG1	3:J:1235:A2G:H6	2.36	0.44
1:C:81:PRO:HD2	1:C:218:GLY:O	2.17	0.44
1:C:93:PHE:CG	1:C:110:LEU:HD21	2.52	0.44

*Continued on next page...*

*Continued from previous page...*

Atom-1	Atom-2	Distance(Å)	Clash(Å)
1:A:189:ILE:HG23	1:E:187:SER:HB2	1.99	0.44
1:I:59:ILE:HA	1:I:59:ILE:HD13	1.90	0.44
1:D:103:THR:OG1	1:D:112:ASN:ND2	2.47	0.44
1:G:34:LEU:O	1:G:49:GLY:HA3	2.18	0.44
1:G:65:GLY:O	1:G:197:LYS:HE3	2.18	0.44
1:J:168:TYR:CE2	1:J:196:LEU:HD22	2.52	0.44
1:K:150:LYS:HG2	1:K:190:LEU:HD11	1.98	0.44
1:E:47:SER:H	1:E:212:THR:CG2	2.31	0.44
1:I:88:ASP:HA	6:I:2004:HOH:O	2.18	0.44
1:L:168:TYR:CE2	1:L:196:LEU:HD22	2.53	0.44
1:C:32:LEU:HD11	1:C:51:ALA:HB2	1.99	0.43
1:H:59:ILE:CG1	1:H:204:VAL:HG22	2.47	0.43
1:L:103:THR:OG1	1:L:112:ASN:ND2	2.47	0.43
2:O:4:THR:O	2:O:5:ARG:HG3	2.17	0.43
1:A:136:ASN:OD1	1:G:149:ILE:CB	2.60	0.43
1:A:75:ASN:HD21	5:A:1238:NAG:C8	2.28	0.43
1:C:47:SER:H	1:C:212:THR:HG22	1.83	0.43
2:X:5:ARG:HG2	2:X:5:ARG:HH11	1.83	0.43
3:F:1239:A2G:H8A	2:X:5:ARG:HD2	2.00	0.43
1:C:118:ASP:CB	1:C:120:VAL:HG23	2.48	0.43
1:C:225:SER:HB3	5:C:1238:NAG:O6	2.19	0.43
1:I:8:TRP:CZ2	1:I:18:MET:HE1	2.54	0.43
3:F:1239:A2G:C8	2:X:5:ARG:HD2	2.48	0.43
1:B:137:PRO:CG	1:B:156:LEU:HD11	2.49	0.43
1:I:189:ILE:HG23	1:K:187:SER:HB2	2.01	0.43
1:L:34:LEU:O	1:L:49:GLY:HA3	2.18	0.43
1:A:128:PHE:CE2	3:A:1235:A2G:H3	2.53	0.43
1:C:179:LEU:HD23	1:C:180:VAL:N	2.33	0.43
1:D:168:TYR:CE2	1:D:196:LEU:HD22	2.54	0.43
1:D:87:ALA:CB	1:D:218:GLY:HA3	2.27	0.43
1:A:184:GLN:NE2	1:F:184:GLN:NE2	2.66	0.43
1:C:47:SER:N	1:C:212:THR:HG22	2.34	0.43
1:I:47:SER:N	1:I:212:THR:HG22	2.33	0.43
1:G:91:ALA:HB3	1:G:110:LEU:HD11	2.01	0.43
1:G:146:ILE:O	1:G:146:ILE:HG13	2.17	0.43
1:I:48:LEU:HG	1:I:49:GLY:N	2.33	0.43
1:A:214:LEU:HD12	3:A:1235:A2G:H2	2.01	0.42
1:A:125:PHE:CE1	1:A:139:ILE:HG23	2.54	0.42
1:C:65:GLY:O	1:C:197:LYS:CE	2.66	0.42
1:D:48:LEU:C	1:D:48:LEU:HD23	2.40	0.42
1:I:47:SER:H	1:I:212:THR:CG2	2.32	0.42
1:L:55:THR:HA	1:L:56:PRO:HD3	1.96	0.42

*Continued on next page...*

*Continued from previous page...*

Atom-1	Atom-2	Distance(Å)	Clash(Å)
1:J:78:PHE:HB2	1:J:220:SER:O	2.20	0.42
1:B:55:THR:OG1	1:K:55:THR:OG1	2.19	0.42
1:E:65:GLY:O	1:E:197:LYS:CE	2.68	0.42
1:H:78:PHE:CE1	1:H:158:ASN:HA	2.55	0.42
1:J:93:PHE:C	1:J:94:LEU:HD12	2.40	0.42
1:D:48:LEU:HD11	1:D:109:GLY:HA2	2.01	0.42
1:F:78:PHE:HB2	1:F:219:GLU:HG3	2.02	0.42
1:K:95:ALA:HB2	1:K:120:VAL:HG22	2.02	0.42
1:E:118:ASP:HB2	1:E:120:VAL:HG23	2.02	0.42
1:E:12:VAL:HG13	1:E:15:GLN:HB3	2.02	0.42
1:A:184:GLN:HE22	1:F:184:GLN:HE22	1.67	0.42
1:F:187:SER:HB2	1:G:189:ILE:HG23	2.02	0.42
1:K:118:ASP:CB	1:K:120:VAL:HG23	2.50	0.41
1:B:101:PRO:O	1:L:114:ASN:CB	2.68	0.41
1:L:86:LEU:HB3	1:L:127:THR:HB	2.02	0.41
1:I:47:SER:H	1:I:212:THR:HG22	1.84	0.41
1:H:56:PRO:HG2	1:J:16:PRO:HB2	2.02	0.41
1:L:103:THR:HB	1:L:107:TYR:HB2	2.02	0.41
1:E:168:TYR:CZ	1:E:196:LEU:HD13	2.55	0.41
1:K:34:LEU:O	1:K:49:GLY:HA3	2.20	0.41
1:I:38:ASP:HB3	1:I:44:LYS:HE2	2.02	0.41
1:A:87:ALA:CB	1:A:218:GLY:HA3	2.26	0.41
1:F:87:ALA:HB1	1:F:213:GLY:N	2.36	0.41
1:F:47:SER:H	1:F:212:THR:CG2	2.33	0.41
1:G:61:ASP:OD2	1:G:63:GLU:HB2	2.21	0.41
1:H:32:LEU:HD21	1:H:34:LEU:HD21	2.02	0.41
1:I:87:ALA:HB1	1:I:212:THR:HA	2.02	0.41
1:C:47:SER:H	1:C:212:THR:CG2	2.32	0.41
1:A:47:SER:N	1:A:212:THR:HG22	2.35	0.41
1:A:48:LEU:CD2	1:A:48:LEU:C	2.88	0.41
1:F:105:ALA:CB	1:F:214:LEU:HD12	2.51	0.41
1:J:59:ILE:HA	1:J:59:ILE:HD13	1.83	0.41
1:K:125:PHE:CE1	1:K:179:LEU:HD12	2.56	0.41
1:F:87:ALA:HB3	1:F:219:GLU:H	1.85	0.41
1:I:23:ASP:CG	1:I:36:LYS:HG2	2.41	0.41
1:J:94:LEU:HG	1:J:206:ILE:HG22	2.03	0.41
1:L:87:ALA:HB3	1:L:219:GLU:H	1.86	0.41
1:C:137:PRO:HB3	1:C:156:LEU:HD21	2.02	0.41
1:E:47:SER:N	1:E:212:THR:HG22	2.36	0.41
1:I:185:ARG:N	1:I:185:ARG:CD	2.84	0.41
1:B:34:LEU:O	1:B:49:GLY:HA3	2.20	0.41
1:F:179:LEU:HD23	1:F:179:LEU:C	2.41	0.41

*Continued on next page...*

Continued from previous page...

Atom-1	Atom-2	Distance(Å)	Clash(Å)
1:G:86:LEU:HD13	1:G:156:LEU:HD11	2.02	0.41
1:J:47:SER:N	1:J:212:THR:HG22	2.36	0.41
1:K:154:TRP:CE2	1:K:156:LEU:CD2	3.04	0.41
1:E:149:ILE:CB	1:F:136:ASN:OD1	2.69	0.40
1:C:153:SER:OG	1:I:135:PRO:CG	2.69	0.40
1:E:48:LEU:HD23	1:E:49:GLY:N	2.36	0.40
1:I:8:TRP:HZ2	1:I:18:MET:HE1	1.85	0.40
2:X:4:THR:C	2:X:5:ARG:O	2.59	0.40
1:B:48:LEU:HD21	1:B:101:PRO:HB3	2.04	0.40
1:F:154:TRP:CD2	1:F:156:LEU:HD23	2.56	0.40
1:F:6:PHE:CE2	1:F:228:PHE:HB3	2.57	0.40
1:B:146:ILE:O	1:B:146:ILE:HG13	2.21	0.40
1:B:87:ALA:HB3	1:B:219:GLU:H	1.86	0.40
1:D:201:PRO:HG2	1:D:203:TRP:O	2.20	0.40
1:D:78:PHE:HB2	1:D:220:SER:O	2.22	0.40
1:H:15:GLN:HB2	1:H:17:ASN:OD1	2.21	0.40
1:I:21:GLN:OE1	1:I:50:ARG:HD3	2.22	0.40
1:L:8:TRP:HZ2	1:L:18:MET:HE1	1.87	0.40

All (1) symmetry-related close contacts are listed below. The label for Atom-2 includes the symmetry operator and encoded unit-cell translations to be applied.

Atom-1	Atom-2	Distance(Å)	Clash(Å)
1:E:55:THR:OG1	1:G:55:THR:OG1[3.655]	1.63	0.57

## 5.3 Torsion angles

### 5.3.1 Protein backbone ⓘ

In the following table, the Percentiles column shows the percent Ramachandran outliers of the chain as a percentile score with respect to all X-ray entries followed by that with respect to entries of similar resolution.

The Analysed column shows the number of residues for which the backbone conformation was analysed, and the total number of residues.

Mol	Chain	Analysed	Favoured	Allowed	Outliers	Percentiles	
1	A	232/253 (92%)	217 (94%)	13 (6%)	2 (1%)	25	55
1	B	228/253 (90%)	217 (95%)	11 (5%)	0	100	100
1	C	227/253 (90%)	216 (95%)	10 (4%)	1 (0%)	43	76
1	D	232/253 (92%)	217 (94%)	14 (6%)	1 (0%)	43	76

Continued on next page...

Continued from previous page...

Mol	Chain	Analysed	Favoured	Allowed	Outliers	Percentiles	
1	E	227/253 (90%)	215 (95%)	10 (4%)	2 (1%)	25	55
1	F	232/253 (92%)	218 (94%)	10 (4%)	4 (2%)	14	33
1	G	229/253 (90%)	213 (93%)	15 (7%)	1 (0%)	43	76
1	H	229/253 (90%)	216 (94%)	12 (5%)	1 (0%)	43	76
1	I	232/253 (92%)	216 (93%)	14 (6%)	2 (1%)	25	55
1	J	228/253 (90%)	215 (94%)	10 (4%)	3 (1%)	18	43
1	K	229/253 (90%)	218 (95%)	10 (4%)	1 (0%)	43	76
1	L	228/253 (90%)	214 (94%)	12 (5%)	2 (1%)	25	55
2	O	2/5 (40%)	2 (100%)	0	0	100	100
2	R	1/5 (20%)	0	1 (100%)	0	100	100
2	U	1/5 (20%)	0	0	1 (100%)	0	0
2	V	1/5 (20%)	1 (100%)	0	0	100	100
2	X	2/5 (40%)	2 (100%)	0	0	100	100
2	Y	1/5 (20%)	0	1 (100%)	0	100	100
All	All	2761/3066 (90%)	2597 (94%)	143 (5%)	21 (1%)	27	58

All (21) Ramachandran outliers are listed below:

Mol	Chain	Res	Type
1	F	114	ASN
1	J	214	LEU
1	A	106	GLY
1	F	116	SER
1	G	156	LEU
1	H	156	LEU
1	J	217	PRO
1	L	156	LEU
1	E	156	LEU
1	K	156	LEU
1	C	156	LEU
1	D	156	LEU
1	F	156	LEU
1	I	156	LEU
1	L	233	PRO
2	U	3	ASP
1	J	156	LEU
1	A	117	GLY

Continued on next page...

*Continued from previous page...*

Mol	Chain	Res	Type
1	E	97	ILE
1	I	97	ILE
1	F	97	ILE

### 5.3.2 Protein sidechains ⓘ

In the following table, the Percentiles column shows the percent sidechain outliers of the chain as a percentile score with respect to all X-ray entries followed by that with respect to entries of similar resolution. The Analysed column shows the number of residues for which the sidechain conformation was analysed, and the total number of residues.

Mol	Chain	Analysed	Rotameric	Outliers	Percentiles	
1	A	202/219 (92%)	190 (94%)	12 (6%)	28	56
1	B	200/219 (91%)	187 (94%)	13 (6%)	24	51
1	C	200/219 (91%)	190 (95%)	10 (5%)	34	66
1	D	202/219 (92%)	193 (96%)	9 (4%)	38	70
1	E	200/219 (91%)	185 (92%)	15 (8%)	19	43
1	F	202/219 (92%)	186 (92%)	16 (8%)	18	39
1	G	201/219 (92%)	185 (92%)	16 (8%)	17	37
1	H	202/219 (92%)	191 (95%)	11 (5%)	31	61
1	I	202/219 (92%)	189 (94%)	13 (6%)	25	52
1	J	201/219 (92%)	192 (96%)	9 (4%)	38	70
1	K	202/219 (92%)	186 (92%)	16 (8%)	18	39
1	L	201/219 (92%)	187 (93%)	14 (7%)	21	47
2	O	4/4 (100%)	4 (100%)	0	100	100
2	P	2/4 (50%)	2 (100%)	0	100	100
2	Q	2/4 (50%)	2 (100%)	0	100	100
2	R	3/4 (75%)	2 (67%)	1 (33%)	0	0
2	S	1/4 (25%)	1 (100%)	0	100	100
2	T	2/4 (50%)	2 (100%)	0	100	100
2	U	3/4 (75%)	3 (100%)	0	100	100
2	V	3/4 (75%)	3 (100%)	0	100	100
2	W	2/4 (50%)	2 (100%)	0	100	100
2	X	4/4 (100%)	3 (75%)	1 (25%)	1	2

*Continued on next page...*

*Continued from previous page...*

Mol	Chain	Analysed	Rotameric	Outliers	Percentiles	
2	Y	3/4 (75%)	3 (100%)	0	100	100
2	Z	2/4 (50%)	2 (100%)	0	100	100
All	All	2446/2676 (91%)	2290 (94%)	156 (6%)	25	52

All (156) residues with a non-rotameric sidechain are listed below:

Mol	Chain	Res	Type
1	A	12	VAL
1	A	50	ARG
1	A	52	LEU
1	A	113	GLU
1	A	115	GLU
1	A	147	ARG
1	A	185	ARG
1	A	187	SER
1	A	196	LEU
1	A	214	LEU
1	A	215	ASP
1	A	234	HIS
1	B	10	LYS
1	B	12	VAL
1	B	50	ARG
1	B	52	LEU
1	B	84	LYS
1	B	103	THR
1	B	114	ASN
1	B	146	ILE
1	B	155	ASP
1	B	185	ARG
1	B	187	SER
1	B	214	LEU
1	B	215	ASP
1	C	12	VAL
1	C	25	ILE
1	C	50	ARG
1	C	52	LEU
1	C	155	ASP
1	C	163	LYS
1	C	185	ARG
1	C	187	SER
1	C	212	THR

*Continued on next page...*

*Continued from previous page...*

Mol	Chain	Res	Type
1	C	215	ASP
1	D	37	VAL
1	D	52	LEU
1	D	103	THR
1	D	104	HIS
1	D	155	ASP
1	D	187	SER
1	D	193	VAL
1	D	214	LEU
1	D	215	ASP
1	E	39	GLU
1	E	50	ARG
1	E	52	LEU
1	E	54	SER
1	E	59	ILE
1	E	84	LYS
1	E	103	THR
1	E	104	HIS
1	E	147	ARG
1	E	155	ASP
1	E	163	LYS
1	E	185	ARG
1	E	187	SER
1	E	214	LEU
1	E	215	ASP
1	F	10	LYS
1	F	12	VAL
1	F	14	LYS
1	F	52	LEU
1	F	63	GLU
1	F	90	LEU
1	F	103	THR
1	F	113	GLU
1	F	114	ASN
1	F	148	SER
1	F	184	GLN
1	F	185	ARG
1	F	187	SER
1	F	212	THR
1	F	214	LEU
1	F	215	ASP
1	G	10	LYS

*Continued on next page...*

*Continued from previous page...*

Mol	Chain	Res	Type
1	G	12	VAL
1	G	37	VAL
1	G	50	ARG
1	G	52	LEU
1	G	84	LYS
1	G	90	LEU
1	G	103	THR
1	G	115	GLU
1	G	155	ASP
1	G	185	ARG
1	G	187	SER
1	G	196	LEU
1	G	212	THR
1	G	214	LEU
1	G	215	ASP
1	H	48	LEU
1	H	52	LEU
1	H	76	PHE
1	H	103	THR
1	H	115	GLU
1	H	148	SER
1	H	155	ASP
1	H	185	ARG
1	H	187	SER
1	H	214	LEU
1	H	215	ASP
1	I	12	VAL
1	I	33	GLN
1	I	50	ARG
1	I	52	LEU
1	I	59	ILE
1	I	155	ASP
1	I	185	ARG
1	I	187	SER
1	I	193	VAL
1	I	212	THR
1	I	214	LEU
1	I	215	ASP
1	I	232	LEU
1	J	33	GLN
1	J	48	LEU
1	J	103	THR

*Continued on next page...*

*Continued from previous page...*

Mol	Chain	Res	Type
1	J	155	ASP
1	J	185	ARG
1	J	187	SER
1	J	214	LEU
1	J	215	ASP
1	J	234	HIS
1	K	10	LYS
1	K	33	GLN
1	K	37	VAL
1	K	48	LEU
1	K	50	ARG
1	K	52	LEU
1	K	62	LYS
1	K	90	LEU
1	K	103	THR
1	K	148	SER
1	K	185	ARG
1	K	187	SER
1	K	193	VAL
1	K	196	LEU
1	K	212	THR
1	K	215	ASP
1	L	33	GLN
1	L	37	VAL
1	L	48	LEU
1	L	52	LEU
1	L	94	LEU
1	L	103	THR
1	L	127	THR
1	L	155	ASP
1	L	187	SER
1	L	193	VAL
1	L	196	LEU
1	L	214	LEU
1	L	215	ASP
1	L	234	HIS
2	R	5	ARG
2	X	5	ARG

Some sidechains can be flipped to improve hydrogen bonding and reduce clashes. All (46) such sidechains are listed below:

Mol	Chain	Res	Type
1	A	15	GLN
1	A	102	GLN
1	A	112	ASN
1	B	15	GLN
1	B	102	GLN
1	B	112	ASN
1	C	102	GLN
1	C	112	ASN
1	D	15	GLN
1	D	102	GLN
1	D	112	ASN
1	E	15	GLN
1	E	102	GLN
1	E	112	ASN
1	E	144	ASN
1	F	15	GLN
1	F	102	GLN
1	F	112	ASN
1	F	159	ASN
1	F	184	GLN
1	G	15	GLN
1	G	102	GLN
1	G	112	ASN
1	G	159	ASN
1	H	15	GLN
1	H	102	GLN
1	H	112	ASN
1	H	159	ASN
1	I	15	GLN
1	I	102	GLN
1	I	112	ASN
1	I	159	ASN
1	J	15	GLN
1	J	102	GLN
1	J	112	ASN
1	J	159	ASN
1	J	234	HIS
1	K	15	GLN
1	K	102	GLN
1	K	112	ASN
1	K	144	ASN
1	L	15	GLN
1	L	102	GLN

*Continued on next page...*

*Continued from previous page...*

Mol	Chain	Res	Type
1	L	112	ASN
1	L	144	ASN
1	L	159	ASN

### 5.3.3 RNA ⓘ

There are no RNA chains in this entry.

## 5.4 Non-standard residues in protein, DNA, RNA chains ⓘ

There are no non-standard protein/DNA/RNA residues in this entry.

## 5.5 Carbohydrates ⓘ

24 carbohydrates are modelled in this entry.

In the following table, the Counts columns list the number of bonds (or angles) for which Mogul statistics could be retrieved, the number of bonds (or angles) that are observed in the model and the number of bonds (or angles) that are defined in the chemical component dictionary. The Link column lists molecule types, if any, to which the group is linked. The Z score for a bond length (or angle) is the number of standard deviations the observed value is removed from the expected value. A bond length (or angle) with  $|Z| > 2$  is considered an outlier worth inspection. RMSZ is the root-mean-square of all Z scores of the bond lengths (or angles).

Mol	Type	Chain	Res	Link	Bond lengths			Bond angles		
					Counts	RMSZ	# Z  > 2	Counts	RMSZ	# Z  > 2
5	NAG	A	1238	1,5	12,14,15	0.74	1 (8%)	15,19,21	1.78	4 (26%)
5	NAG	A	1239	5	12,14,15	0.74	1 (8%)	15,19,21	1.03	1 (6%)
5	NAG	B	1237	1,5	12,14,15	0.91	0	15,19,21	1.88	5 (33%)
5	NAG	B	1238	5	12,14,15	0.62	0	15,19,21	1.35	1 (6%)
5	NAG	C	1238	1,5	12,14,15	0.66	0	15,19,21	2.00	6 (40%)
5	NAG	C	1239	5	12,14,15	0.87	1 (8%)	15,19,21	1.76	4 (26%)
5	NAG	D	1238	1,5	12,14,15	1.10	2 (16%)	15,19,21	2.31	9 (60%)
5	NAG	D	1239	5	12,14,15	0.87	0	15,19,21	2.61	6 (40%)
5	NAG	E	1238	1,5	12,14,15	0.81	0	15,19,21	1.66	5 (33%)
5	NAG	E	1239	5	12,14,15	0.81	1 (8%)	15,19,21	1.24	1 (6%)
5	NAG	F	1235	1,5	12,14,15	0.90	1 (8%)	15,19,21	2.39	8 (53%)
5	NAG	F	1236	5	12,14,15	0.73	0	15,19,21	2.51	5 (33%)
5	NAG	G	1238	1,5	12,14,15	0.63	0	15,19,21	2.00	4 (26%)

Mol	Type	Chain	Res	Link	Bond lengths			Bond angles		
					Counts	RMSZ	# Z  > 2	Counts	RMSZ	# Z  > 2
5	NAG	G	1239	5	12,14,15	0.55	0	15,19,21	1.25	2 (13%)
5	NAG	H	1238	1,5	12,14,15	0.76	0	15,19,21	1.78	4 (26%)
5	NAG	H	1239	5	12,14,15	1.12	1 (8%)	15,19,21	1.94	5 (33%)
5	NAG	I	1238	1,5	12,14,15	0.63	0	15,19,21	1.98	6 (40%)
5	NAG	I	1239	5	12,14,15	0.76	1 (8%)	15,19,21	1.47	4 (26%)
5	NAG	J	1238	1,5	12,14,15	0.98	1 (8%)	15,19,21	2.16	5 (33%)
5	NAG	J	1239	5	12,14,15	0.57	0	15,19,21	1.98	2 (13%)
5	NAG	K	1238	1,5	12,14,15	0.78	0	15,19,21	1.96	5 (33%)
5	NAG	K	1239	5	12,14,15	0.72	0	15,19,21	1.89	4 (26%)
5	NAG	L	1238	1,5	12,14,15	1.06	1 (8%)	15,19,21	2.21	4 (26%)
5	NAG	L	1239	5	12,14,15	0.84	0	15,19,21	1.79	2 (13%)

In the following table, the Chirals column lists the number of chiral outliers, the number of chiral centers analysed, the number of these observed in the model and the number defined in the chemical component dictionary. Similar counts are reported in the Torsion and Rings columns. '-' means no outliers of that kind were identified.

Mol	Type	Chain	Res	Link	Chirals	Torsions	Rings
5	NAG	A	1238	1,5	-	0/6/23/26	0/1/1/1
5	NAG	A	1239	5	-	0/6/23/26	0/1/1/1
5	NAG	B	1237	1,5	-	0/6/23/26	0/1/1/1
5	NAG	B	1238	5	-	0/6/23/26	0/1/1/1
5	NAG	C	1238	1,5	-	0/6/23/26	0/1/1/1
5	NAG	C	1239	5	-	0/6/23/26	0/1/1/1
5	NAG	D	1238	1,5	-	0/6/23/26	0/1/1/1
5	NAG	D	1239	5	-	0/6/23/26	0/1/1/1
5	NAG	E	1238	1,5	-	0/6/23/26	0/1/1/1
5	NAG	E	1239	5	-	0/6/23/26	0/1/1/1
5	NAG	F	1235	1,5	-	0/6/23/26	0/1/1/1
5	NAG	F	1236	5	-	0/6/23/26	0/1/1/1
5	NAG	G	1238	1,5	-	0/6/23/26	0/1/1/1
5	NAG	G	1239	5	-	0/6/23/26	0/1/1/1
5	NAG	H	1238	1,5	-	0/6/23/26	0/1/1/1
5	NAG	H	1239	5	-	0/6/23/26	0/1/1/1
5	NAG	I	1238	1,5	-	0/6/23/26	0/1/1/1
5	NAG	I	1239	5	-	0/6/23/26	0/1/1/1
5	NAG	J	1238	1,5	-	0/6/23/26	0/1/1/1
5	NAG	J	1239	5	-	0/6/23/26	0/1/1/1
5	NAG	K	1238	1,5	-	0/6/23/26	0/1/1/1
5	NAG	K	1239	5	-	0/6/23/26	0/1/1/1

*Continued on next page...*

*Continued from previous page...*

Mol	Type	Chain	Res	Link	Chirals	Torsions	Rings
5	NAG	L	1238	1,5	-	0/6/23/26	0/1/1/1
5	NAG	L	1239	5	-	0/6/23/26	0/1/1/1

All (11) bond length outliers are listed below:

Mol	Chain	Res	Type	Atoms	Z	Observed(Å)	Ideal(Å)
5	E	1239	NAG	O5-C5	-2.55	1.41	1.45
5	D	1238	NAG	C4-C5	2.52	1.58	1.53
5	H	1239	NAG	C2-N2	2.36	1.49	1.46
5	D	1238	NAG	C2-N2	-2.24	1.44	1.46
5	I	1239	NAG	O5-C5	-2.17	1.42	1.45
5	A	1238	NAG	O5-C5	-2.17	1.42	1.45
5	L	1238	NAG	O5-C5	-2.16	1.42	1.45
5	F	1235	NAG	O5-C5	-2.07	1.42	1.45
5	C	1239	NAG	O5-C5	-2.07	1.42	1.45
5	A	1239	NAG	O5-C5	-2.02	1.42	1.45
5	J	1238	NAG	C2-N2	2.01	1.48	1.46

All (102) bond angle outliers are listed below:

Mol	Chain	Res	Type	Atoms	Z	Observed(°)	Ideal(°)
5	F	1236	NAG	O5-C5-C4	7.71	120.44	110.65
5	D	1239	NAG	O5-C5-C4	7.07	119.63	110.65
5	J	1239	NAG	O5-C5-C4	6.47	118.86	110.65
5	L	1238	NAG	C8-C7-N2	5.32	126.18	116.12
5	H	1239	NAG	O5-C5-C4	4.82	116.77	110.65
5	J	1238	NAG	C2-N2-C7	4.71	129.09	123.39
5	F	1235	NAG	C2-N2-C7	4.69	129.07	123.39
5	L	1239	NAG	O5-C5-C4	4.48	116.33	110.65
5	A	1238	NAG	C8-C7-N2	4.34	124.32	116.12
5	B	1237	NAG	C2-N2-C7	4.14	128.40	123.39
5	K	1238	NAG	C8-C7-N2	4.11	123.89	116.12
5	G	1238	NAG	O5-C5-C4	4.05	115.79	110.65
5	F	1235	NAG	C8-C7-N2	4.01	123.71	116.12
5	D	1238	NAG	C8-C7-N2	3.94	123.56	116.12
5	G	1238	NAG	C2-N2-C7	3.89	128.10	123.39
5	D	1239	NAG	C3-C2-N2	-3.89	105.79	111.62
5	K	1239	NAG	C2-N2-C7	3.89	128.09	123.39
5	C	1238	NAG	O5-C5-C6	3.82	110.99	106.98
5	L	1238	NAG	O7-C7-C8	-3.76	114.84	122.04
5	H	1238	NAG	C8-C7-N2	3.72	123.15	116.12
5	G	1238	NAG	C3-C2-N2	-3.65	106.15	111.62

*Continued on next page...*

*Continued from previous page...*

Mol	Chain	Res	Type	Atoms	Z	Observed(°)	Ideal(°)
5	I	1238	NAG	C8-C7-N2	3.57	122.88	116.12
5	A	1238	NAG	O7-C7-C8	-3.53	115.28	122.04
5	C	1239	NAG	O5-C5-C4	3.51	115.11	110.65
5	L	1239	NAG	O4-C4-C5	3.48	118.46	109.25
5	C	1238	NAG	C8-C7-N2	3.44	122.62	116.12
5	K	1239	NAG	C3-C2-N2	-3.38	106.55	111.62
5	D	1238	NAG	O5-C5-C6	-3.36	103.46	106.98
5	C	1239	NAG	C3-C4-C5	3.34	116.17	110.17
5	J	1238	NAG	O5-C5-C4	3.26	114.79	110.65
5	I	1238	NAG	O5-C5-C4	3.25	114.78	110.65
5	K	1238	NAG	O7-C7-C8	-3.16	115.99	122.04
5	L	1238	NAG	O5-C5-C4	3.13	114.62	110.65
5	J	1238	NAG	C8-C7-N2	3.09	121.97	116.12
5	F	1235	NAG	C3-C2-N2	-3.07	107.01	111.62
5	F	1235	NAG	O5-C5-C4	3.03	114.50	110.65
5	K	1239	NAG	O7-C7-N2	2.98	127.97	121.90
5	B	1237	NAG	C8-C7-N2	2.95	121.70	116.12
5	I	1239	NAG	O5-C5-C4	2.92	114.36	110.65
5	C	1239	NAG	O5-C5-C6	2.92	110.05	106.98
5	J	1238	NAG	O7-C7-C8	-2.92	116.45	122.04
5	E	1238	NAG	C8-C7-N2	2.92	121.63	116.12
5	K	1239	NAG	O7-C7-C8	-2.90	116.47	122.04
5	B	1237	NAG	O5-C5-C6	2.90	110.03	106.98
5	C	1238	NAG	O7-C7-C8	-2.90	116.48	122.04
5	D	1238	NAG	O4-C4-C5	2.88	116.89	109.25
5	L	1238	NAG	C2-N2-C7	2.83	126.82	123.39
5	K	1238	NAG	C3-C2-N2	2.82	115.86	111.62
5	D	1239	NAG	C3-C4-C5	2.82	115.24	110.17
5	G	1238	NAG	C8-C7-N2	2.82	121.44	116.12
5	H	1238	NAG	O5-C5-C6	-2.81	104.03	106.98
5	H	1239	NAG	C2-N2-C7	2.76	126.73	123.39
5	K	1238	NAG	O5-C5-C4	2.75	114.15	110.65
5	D	1238	NAG	C3-C4-C5	-2.74	105.25	110.17
5	H	1238	NAG	O4-C4-C5	2.72	116.44	109.25
5	D	1238	NAG	O4-C4-C3	-2.69	104.33	110.36
5	H	1238	NAG	O7-C7-C8	-2.68	116.91	122.04
5	D	1239	NAG	C4-C3-C2	2.66	116.32	110.74
5	K	1238	NAG	O4-C4-C5	2.64	116.23	109.25
5	F	1236	NAG	C3-C2-N2	-2.63	107.68	111.62
5	F	1235	NAG	O4-C4-C5	2.62	116.18	109.25
5	H	1239	NAG	O4-C4-C3	2.57	116.11	110.36
5	D	1238	NAG	O7-C7-C8	-2.56	117.13	122.04

*Continued on next page...*

*Continued from previous page...*

Mol	Chain	Res	Type	Atoms	Z	Observed(°)	Ideal(°)
5	D	1239	NAG	O3-C3-C2	-2.56	103.94	109.16
5	B	1238	NAG	O5-C5-C6	2.55	109.66	106.98
5	F	1235	NAG	O7-C7-N2	-2.55	116.72	121.90
5	B	1237	NAG	O3-C3-C2	2.54	114.35	109.16
5	E	1238	NAG	O7-C7-C8	-2.52	117.20	122.04
5	A	1238	NAG	C2-N2-C7	2.50	126.41	123.39
5	E	1239	NAG	C3-C2-N2	-2.49	107.88	111.62
5	I	1239	NAG	C3-C2-N2	-2.48	107.91	111.62
5	F	1235	NAG	O4-C4-C3	-2.47	104.83	110.36
5	C	1238	NAG	O5-C5-C4	2.46	113.78	110.65
5	I	1238	NAG	O4-C4-C5	2.45	115.75	109.25
5	F	1235	NAG	O5-C5-C6	-2.45	104.41	106.98
5	G	1239	NAG	O5-C5-C4	2.44	113.75	110.65
5	C	1238	NAG	C6-C5-C4	-2.44	107.08	113.04
5	I	1238	NAG	O4-C4-C3	-2.40	104.99	110.36
5	F	1236	NAG	C2-N2-C7	2.39	126.29	123.39
5	H	1239	NAG	O7-C7-C8	-2.39	117.47	122.04
5	E	1238	NAG	O3-C3-C2	-2.39	104.28	109.16
5	D	1238	NAG	O6-C6-C5	-2.39	103.06	111.37
5	F	1236	NAG	O5-C5-C6	-2.37	104.50	106.98
5	I	1239	NAG	C2-N2-C7	2.35	126.24	123.39
5	B	1237	NAG	O7-C7-C8	-2.35	117.53	122.04
5	A	1239	NAG	O5-C5-C4	2.33	113.61	110.65
5	D	1238	NAG	C2-N2-C7	2.30	126.17	123.39
5	F	1236	NAG	O6-C6-C5	-2.29	103.40	111.37
5	J	1238	NAG	O5-C5-C6	-2.26	104.61	106.98
5	I	1239	NAG	O7-C7-C8	-2.23	117.77	122.04
5	E	1238	NAG	C2-N2-C7	2.22	126.08	123.39
5	D	1239	NAG	C8-C7-N2	-2.18	111.99	116.12
5	H	1239	NAG	O7-C7-N2	2.17	126.32	121.90
5	J	1239	NAG	O4-C4-C5	2.16	114.96	109.25
5	E	1238	NAG	C6-C5-C4	-2.15	107.79	113.04
5	I	1238	NAG	O3-C3-C2	2.14	113.52	109.16
5	C	1239	NAG	O7-C7-C8	-2.13	117.97	122.04
5	I	1238	NAG	O7-C7-N2	-2.08	117.67	121.90
5	A	1238	NAG	C3-C4-C5	-2.04	106.50	110.17
5	C	1238	NAG	C2-N2-C7	2.04	125.86	123.39
5	D	1238	NAG	O5-C5-C4	2.01	113.21	110.65
5	G	1239	NAG	O7-C7-C8	-2.01	118.20	122.04

There are no chirality outliers.

There are no torsion outliers.

There are no ring outliers.

## 5.6 Ligand geometry

Of 36 ligands modelled in this entry, 24 are monoatomic - leaving 12 for Mogul analysis.

In the following table, the Counts columns list the number of bonds (or angles) for which Mogul statistics could be retrieved, the number of bonds (or angles) that are observed in the model and the number of bonds (or angles) that are defined in the chemical component dictionary. The Link column lists molecule types, if any, to which the group is linked. The Z score for a bond length (or angle) is the number of standard deviations the observed value is removed from the expected value. A bond length (or angle) with  $|Z| > 2$  is considered an outlier worth inspection. RMSZ is the root-mean-square of all Z scores of the bond lengths (or angles).

Mol	Type	Chain	Res	Link	Bond lengths			Bond angles		
					Counts	RMSZ	$\# Z  > 2$	Counts	RMSZ	$\# Z  > 2$
3	A2G	A	1235	2	12,14,15	0.63	0	15,19,21	1.53	3 (20%)
3	A2G	B	1234	2	12,14,15	0.52	0	15,19,21	1.62	3 (20%)
3	A2G	C	1235	2	12,14,15	0.81	0	15,19,21	1.75	3 (20%)
3	A2G	D	1235	2	12,14,15	0.44	0	15,19,21	1.34	2 (13%)
3	A2G	E	1235	2	12,14,15	0.64	0	15,19,21	1.02	1 (6%)
3	A2G	F	1239	2	12,14,15	0.57	0	15,19,21	1.90	5 (33%)
3	A2G	G	1235	2	12,14,15	0.60	0	15,19,21	1.32	1 (6%)
3	A2G	H	1235	2	12,14,15	0.53	0	15,19,21	1.55	3 (20%)
3	A2G	I	1235	2	12,14,15	0.47	0	15,19,21	1.30	2 (13%)
3	A2G	J	1235	2	12,14,15	0.63	0	15,19,21	1.04	0
3	A2G	K	1235	2	12,14,15	0.89	0	15,19,21	1.82	3 (20%)
3	A2G	L	1235	2	12,14,15	0.58	0	15,19,21	0.76	0

In the following table, the Chirals column lists the number of chiral outliers, the number of chiral centers analysed, the number of these observed in the model and the number defined in the chemical component dictionary. Similar counts are reported in the Torsion and Rings columns. '-' means no outliers of that kind were identified.

Mol	Type	Chain	Res	Link	Chirals	Torsions	Rings
3	A2G	A	1235	2	-	0/6/23/26	0/1/1/1
3	A2G	B	1234	2	-	0/6/23/26	0/1/1/1
3	A2G	C	1235	2	-	0/6/23/26	0/1/1/1
3	A2G	D	1235	2	-	0/6/23/26	0/1/1/1
3	A2G	E	1235	2	-	0/6/23/26	0/1/1/1
3	A2G	F	1239	2	-	0/6/23/26	0/1/1/1
3	A2G	G	1235	2	-	0/6/23/26	0/1/1/1

*Continued on next page...*

*Continued from previous page...*

Mol	Type	Chain	Res	Link	Chirals	Torsions	Rings
3	A2G	H	1235	2	-	0/6/23/26	0/1/1/1
3	A2G	I	1235	2	-	0/6/23/26	0/1/1/1
3	A2G	J	1235	2	-	0/6/23/26	0/1/1/1
3	A2G	K	1235	2	-	0/6/23/26	0/1/1/1
3	A2G	L	1235	2	-	0/6/23/26	0/1/1/1

There are no bond length outliers.

All (26) bond angle outliers are listed below:

Mol	Chain	Res	Type	Atoms	Z	Observed(°)	Ideal(°)
3	K	1235	A2G	C3-C2-N2	-4.83	104.37	111.62
3	B	1234	A2G	O-C5-C6	4.62	111.83	106.98
3	C	1235	A2G	C2-N2-C7	4.23	128.51	123.39
3	F	1239	A2G	O-C5-C6	3.66	110.82	106.98
3	D	1235	A2G	C3-C2-N2	-3.56	106.28	111.62
3	H	1235	A2G	C3-C2-N2	-3.52	106.34	111.62
3	C	1235	A2G	O-C5-C6	3.31	110.45	106.98
3	A	1235	A2G	O-C5-C6	3.22	110.36	106.98
3	F	1239	A2G	C2-N2-C7	-3.21	119.52	123.39
3	H	1235	A2G	O4-C4-C3	-3.14	103.35	110.36
3	F	1239	A2G	C6-C5-C4	-2.99	105.74	113.04
3	A	1235	A2G	O-C5-C4	2.96	114.40	110.65
3	F	1239	A2G	C3-C2-N2	-2.95	107.20	111.62
3	G	1235	A2G	O-C5-C6	2.91	110.03	106.98
3	K	1235	A2G	O4-C4-C5	2.85	116.79	109.25
3	A	1235	A2G	C3-C2-N2	-2.82	107.39	111.62
3	I	1235	A2G	O-C5-C6	2.78	109.90	106.98
3	I	1235	A2G	C3-C2-N2	-2.75	107.50	111.62
3	K	1235	A2G	O4-C4-C3	-2.56	104.63	110.36
3	B	1234	A2G	C3-C2-N2	-2.54	107.81	111.62
3	D	1235	A2G	O-C5-C6	2.43	109.53	106.98
3	B	1234	A2G	C2-N2-C7	-2.35	120.56	123.39
3	C	1235	A2G	O7-C7-N2	2.19	126.35	121.90
3	F	1239	A2G	O7-C7-C8	-2.12	117.97	122.04
3	H	1235	A2G	O-C5-C6	2.08	109.16	106.98
3	E	1235	A2G	O6-C6-C5	-2.06	104.20	111.37

There are no chirality outliers.

There are no torsion outliers.

There are no ring outliers.

## 5.7 Other polymers ⓘ

There are no such residues in this entry.

## 5.8 Polymer linkage issues

There are no chain breaks in this entry.

## 6 Fit of model and data ⓘ

### 6.1 Protein, DNA and RNA chains ⓘ

In the following table, the column labelled ‘#RSRZ> 2’ contains the number (and percentage) of RSRZ outliers, followed by percent RSRZ outliers for the chain as percentile scores relative to all X-ray entries and entries of similar resolution. The OWAB column contains the minimum, median, 95<sup>th</sup> percentile and maximum values of the occupancy-weighted average B-factor per residue. The column labelled ‘Q< 0.9’ lists the number of (and percentage) of residues with an average occupancy less than 0.9.

Mol	Chain	Analysed	<RSRZ>	#RSRZ>2	OWAB(Å <sup>2</sup> )	Q<0.9
1	A	234/253 (92%)	0.19	8 (3%) 43 48	43, 56, 98, 127	0
1	B	232/253 (91%)	0.07	6 (2%) 53 59	44, 56, 83, 111	0
1	C	231/253 (91%)	0.64	26 (11%) 6 6	47, 61, 85, 118	0
1	D	234/253 (92%)	0.06	8 (3%) 43 48	44, 49, 63, 87	0
1	E	231/253 (91%)	0.05	7 (3%) 48 54	44, 49, 65, 83	0
1	F	234/253 (92%)	0.01	8 (3%) 43 48	44, 49, 64, 107	0
1	G	233/253 (92%)	0.08	10 (4%) 34 38	43, 50, 76, 116	0
1	H	232/253 (91%)	0.01	6 (2%) 53 59	43, 50, 66, 116	0
1	I	234/253 (92%)	0.01	4 (1%) 67 73	43, 49, 61, 85	0
1	J	232/253 (91%)	0.26	13 (5%) 24 25	42, 66, 108, 141	0
1	K	232/253 (91%)	-0.05	6 (2%) 53 59	44, 49, 70, 113	0
1	L	232/253 (91%)	0.09	9 (3%) 37 42	44, 51, 75, 125	0
2	O	4/5 (80%)	0.45	0 100 100	47, 50, 73, 77	0
2	P	2/5 (40%)	0.93	0 100 100	77, 77, 77, 86	0
2	Q	2/5 (40%)	1.09	0 100 100	72, 72, 72, 81	0
2	R	3/5 (60%)	1.01	0 100 100	76, 76, 76, 82	0
2	S	1/5 (20%)	0.07	0 100 100	71, 71, 71, 71	0
2	T	2/5 (40%)	0.54	0 100 100	63, 63, 63, 63	0
2	U	3/5 (60%)	0.67	0 100 100	61, 61, 62, 82	0
2	V	3/5 (60%)	1.52	1 (33%) 1 1	71, 71, 73, 98	0
2	W	2/5 (40%)	1.59	1 (50%) 0 0	70, 70, 70, 70	0
2	X	4/5 (80%)	1.98	2 (50%) 0 0	65, 71, 73, 91	0
2	Y	3/5 (60%)	0.94	0 100 100	50, 50, 55, 75	0
2	Z	2/5 (40%)	1.28	0 100 100	61, 61, 61, 64	0

*Continued on next page...*

*Continued from previous page...*

Mol	Chain	Analysed	<RSRZ>	#RSRZ>2			OWAB(Å <sup>2</sup> )	Q<0.9
All	All	2822/3096 (91%)	0.13	115 (4%)	35	40	42, 51, 83, 141	0

All (115) RSRZ outliers are listed below:

Mol	Chain	Res	Type	RSRZ
1	G	40	ASN	5.6
1	C	234	HIS	5.4
1	G	117	GLY	5.0
1	L	115	GLU	4.6
1	B	40	ASN	4.3
1	F	118	ASP	4.1
1	L	118	ASP	4.1
1	J	46	SER	4.0
1	A	234	HIS	3.8
1	H	234	HIS	3.8
1	A	147	ARG	3.7
1	J	64	THR	3.7
1	C	64	THR	3.6
1	F	63	GLU	3.6
1	G	115	GLU	3.6
1	A	40	ASN	3.6
1	L	40	ASN	3.5
1	C	213	GLY	3.5
2	X	3	ASP	3.3
1	A	136	ASN	3.2
1	C	39	GLU	3.2
1	C	118	ASP	3.2
1	G	234	HIS	3.2
1	F	117	GLY	3.2
1	E	234	HIS	3.2
1	H	40	ASN	3.1
1	K	234	HIS	3.1
1	A	115	GLU	3.1
2	X	2	PRO	3.1
1	J	39	GLU	3.1
1	H	39	GLU	3.0
1	D	115	GLU	3.0
1	H	63	GLU	3.0
1	J	218	GLY	3.0
1	D	234	HIS	2.9
1	J	115	GLU	2.9
1	I	39	GLU	2.9

*Continued on next page...*

*Continued from previous page...*

Mol	Chain	Res	Type	RSRZ
1	F	40	ASN	2.8
1	J	114	ASN	2.8
1	E	118	ASP	2.8
1	A	117	GLY	2.8
1	C	37	VAL	2.8
1	D	40	ASN	2.8
1	G	1	ALA	2.8
1	C	85	ARG	2.7
1	E	114	ASN	2.7
1	G	114	ASN	2.7
1	J	40	ASN	2.7
1	C	113	GLU	2.7
1	D	89	GLY	2.7
1	G	39	GLU	2.7
1	C	40	ASN	2.7
2	W	3	ASP	2.7
1	J	41	GLY	2.7
1	D	39	GLU	2.6
1	J	116	SER	2.6
1	C	62	LYS	2.6
1	C	114	ASN	2.6
1	G	63	GLU	2.6
1	H	115	GLU	2.6
1	J	82	ASP	2.6
1	B	62	LYS	2.6
1	I	234	HIS	2.6
1	B	117	GLY	2.6
1	F	115	GLU	2.6
1	G	118	ASP	2.5
1	L	135	PRO	2.5
1	B	215	ASP	2.5
1	C	22	GLY	2.5
1	C	29	SER	2.5
1	K	114	ASN	2.5
1	F	39	GLU	2.5
1	J	104	HIS	2.4
1	K	115	GLU	2.4
1	L	39	GLU	2.4
1	C	13	PRO	2.4
1	B	39	GLU	2.4
1	L	41	GLY	2.4
1	J	90	LEU	2.4

*Continued on next page...*

*Continued from previous page...*

Mol	Chain	Res	Type	RSRZ
1	L	147	ARG	2.4
1	D	29	SER	2.3
1	F	234	HIS	2.3
1	A	118	ASP	2.3
1	C	63	GLU	2.3
1	C	49	GLY	2.3
1	L	234	HIS	2.3
1	E	40	ASN	2.3
1	B	63	GLU	2.3
1	E	84	LYS	2.3
1	L	114	ASN	2.3
1	A	107	TYR	2.3
1	E	57	ILE	2.3
1	C	60	TRP	2.2
1	G	89	GLY	2.2
1	D	118	ASP	2.2
1	I	115	GLU	2.2
1	C	42	THR	2.2
1	C	198	THR	2.2
2	V	5	ARG	2.2
1	C	80	ALA	2.2
1	F	1	ALA	2.1
1	C	214	LEU	2.1
1	C	84	LYS	2.1
1	D	63	GLU	2.1
1	C	35	ASN	2.1
1	E	63	GLU	2.1
1	K	39	GLU	2.1
1	K	85	ARG	2.1
1	I	94	LEU	2.1
1	C	211	ALA	2.0
1	C	38	ASP	2.0
1	J	213	GLY	2.0
1	H	114	ASN	2.0
1	C	147	ARG	2.0
1	K	118	ASP	2.0

## 6.2 Non-standard residues in protein, DNA, RNA chains ⓘ

There are no non-standard protein/DNA/RNA residues in this entry.

### 6.3 Carbohydrates ⓘ

In the following table, the Atoms column lists the number of modelled atoms in the group and the number defined in the chemical component dictionary. LLDF column lists the quality of electron density of the group with respect to its neighbouring residues in protein, DNA or RNA chains. The B-factors column lists the minimum, median, 95<sup>th</sup> percentile and maximum values of B factors of atoms in the group. The column labelled 'Q < 0.9' lists the number of atoms with occupancy less than 0.9.

Mol	Type	Chain	Res	Atoms	RSR	LLDF	B-factors(Å <sup>2</sup> )	Q<0.9
5	NAG	K	1239	14/15	0.31	3.37	45,65,74,75	0
5	NAG	I	1239	14/15	0.26	3.13	58,65,75,76	0
5	NAG	H	1239	14/15	0.36	3.09	41,50,58,59	0
5	NAG	J	1239	14/15	0.30	2.77	50,59,71,73	0
5	NAG	L	1239	14/15	0.28	2.11	47,53,64,66	0
5	NAG	B	1238	14/15	0.31	1.55	50,58,63,67	0
5	NAG	F	1236	14/15	0.27	1.47	44,48,55,60	0
5	NAG	H	1238	14/15	0.23	1.40	23,35,39,41	0
5	NAG	C	1238	14/15	0.29	1.28	44,60,77,79	0
5	NAG	E	1239	14/15	0.26	1.08	42,47,54,67	0
5	NAG	G	1239	14/15	0.25	0.93	49,55,64,65	0
5	NAG	D	1239	14/15	0.25	0.61	44,58,64,75	0
5	NAG	J	1238	14/15	0.21	0.46	32,44,50,50	0
5	NAG	C	1239	14/15	0.29	0.32	61,69,90,91	0
5	NAG	F	1235	14/15	0.19	0.31	23,33,36,40	0
5	NAG	K	1238	14/15	0.18	0.19	31,50,63,71	0
5	NAG	D	1238	14/15	0.17	-0.06	24,39,51,52	0
5	NAG	L	1238	14/15	0.15	-0.07	23,33,43,50	0
5	NAG	A	1239	14/15	0.22	-0.32	52,57,59,59	0
5	NAG	A	1238	14/15	0.15	-0.34	29,39,46,48	0
5	NAG	G	1238	14/15	0.14	-0.40	28,41,44,46	0
5	NAG	E	1238	14/15	0.16	-0.45	21,32,46,50	0
5	NAG	I	1238	14/15	0.14	-0.46	29,41,52,53	0
5	NAG	B	1237	14/15	0.15	-0.55	29,45,50,50	0

### 6.4 Ligands ⓘ

In the following table, the Atoms column lists the number of modelled atoms in the group and the number defined in the chemical component dictionary. LLDF column lists the quality of electron density of the group with respect to its neighbouring residues in protein, DNA or RNA chains. The B-factors column lists the minimum, median, 95<sup>th</sup> percentile and maximum values of B factors of atoms in the group. The column labelled 'Q < 0.9' lists the number of atoms with occupancy less than 0.9.

Mol	Type	Chain	Res	Atoms	RSR	LLDF	B-factors( $\text{\AA}^2$ )	Q<0.9
3	A2G	C	1235	14/15	0.22	-0.58	59,74,79,81	0
3	A2G	J	1235	14/15	0.19	-0.65	57,72,78,79	0
3	A2G	A	1235	14/15	0.21	-0.73	53,69,74,74	0
4	MN	A	1237	1/1	0.18	-0.80	86,86,86,86	0
3	A2G	B	1234	14/15	0.17	-1.05	47,52,59,60	0
4	MN	E	1237	1/1	0.13	-1.12	60,60,60,60	0
3	A2G	F	1239	14/15	0.11	-1.17	34,39,42,44	0
3	A2G	K	1235	14/15	0.11	-1.39	33,40,50,57	0
3	A2G	I	1235	14/15	0.12	-1.43	26,29,32,32	0
4	MN	L	1237	1/1	0.10	-1.46	75,75,75,75	0
4	MN	B	1235	1/1	0.08	-1.53	55,55,55,55	0
3	A2G	G	1235	14/15	0.14	-1.55	48,58,61,63	0
3	A2G	L	1235	14/15	0.11	-1.58	40,46,50,52	0
3	A2G	H	1235	14/15	0.16	-1.61	41,44,49,52	0
3	A2G	D	1235	14/15	0.14	-1.63	33,39,42,46	0
4	MN	H	1236	1/1	0.08	-1.64	41,41,41,41	0
4	MN	J	1236	1/1	0.14	-1.69	63,63,63,63	0
4	MN	D	1237	1/1	0.07	-1.79	55,55,55,55	0
4	MN	B	1236	1/1	0.11	-1.86	60,60,60,60	0
4	MN	A	1236	1/1	0.08	-1.88	61,61,61,61	0
4	MN	I	1236	1/1	0.07	-1.91	43,43,43,43	0
4	MN	G	1237	1/1	0.11	-1.93	66,66,66,66	0
4	MN	E	1236	1/1	0.09	-2.19	44,44,44,44	0
4	MN	H	1237	1/1	0.06	-2.69	55,55,55,55	0
4	MN	F	1238	1/1	0.08	-2.71	67,67,67,67	0
4	MN	J	1237	1/1	0.07	-2.76	76,76,76,76	0
4	MN	G	1236	1/1	0.09	-2.82	59,59,59,59	0
4	MN	L	1236	1/1	0.04	-2.85	53,53,53,53	0
4	MN	C	1237	1/1	0.08	-2.92	65,65,65,65	0
3	A2G	E	1235	14/15	0.10	-2.93	34,40,45,50	0
4	MN	I	1237	1/1	0.04	-3.07	46,46,46,46	0
4	MN	D	1236	1/1	0.02	-3.34	37,37,37,37	0
4	MN	K	1237	1/1	0.06	-3.56	65,65,65,65	0
4	MN	F	1237	1/1	0.03	-3.83	49,49,49,49	0
4	MN	K	1236	1/1	0.05	-3.86	43,43,43,43	0
4	MN	C	1236	1/1	0.06	-4.11	65,65,65,65	0

## 6.5 Other polymers ⓘ

There are no such residues in this entry.