



# Full wwPDB X-ray Structure Validation Report i

Feb 26, 2014 – 10:13 PM GMT

PDB ID : 3D80  
Title : Structural Analysis of a Holo Enzyme Complex of Mouse Dihydrofolate Reductase with NADPH and a Ternary Complex with the Potent and Selective Inhibitor 2,4-Diamino-6-(2'-hydroxydibenz[b,f]azepin-5-yl)methylpteridine  
Authors : Cody, V.  
Deposited on : 2008-05-22  
Resolution : 1.40 Å(reported)

This is a full wwPDB validation report for a publicly released PDB entry.  
We welcome your comments at [validation@mail.wwpdb.org](mailto:validation@mail.wwpdb.org)  
A user guide is available at <http://wwpdb.org/ValidationPDFNotes.html>

---

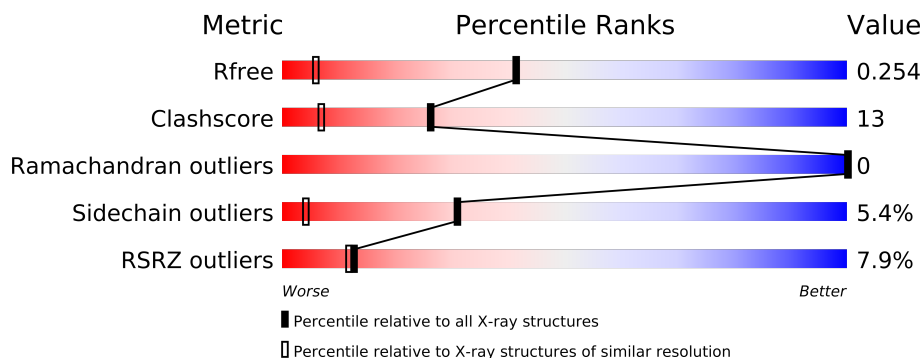
The following versions of software and data (see [references](#)) were used in the production of this report:

MolProbity : 4.02b-467  
Mogul : 1.15 2013  
Xtriage (Phenix) : dev-1323  
EDS : stable22639  
Percentile statistics : 21963  
Refmac : 5.8.0049  
CCP4 : 6.3.0 (Settle)  
Ideal geometry (proteins) : Engh & Huber (2001)  
Ideal geometry (DNA, RNA) : Parkinson et. al. (1996)  
Validation Pipeline (wwPDB-VP) : stable22683

# 1 Overall quality at a glance


The reported resolution of this entry is 1.40 Å.

Percentile scores (ranging between 0-100) for global validation metrics of the entry are shown in the following graphic. The table shows the number of entries on which the scores are based.



Metric	Whole archive (#Entries)	Similar resolution (#Entries, resolution range(Å))
$R_{free}$	66092	1097 (1.42-1.38)
Clashscore	79885	1246 (1.42-1.38)
Ramachandran outliers	78287	1206 (1.42-1.38)
Sidechain outliers	78261	1205 (1.42-1.38)
RSRZ outliers	66119	1097 (1.42-1.38)

The table below summarises the geometric issues observed across the polymeric chains and their fit to the electron density. The red, orange, yellow and green segments on the lower bar indicate the fraction of residues that contain outliers for  $\geq 3$ , 2, 1 and 0 types of geometric quality criteria. The upper red bar (where present) indicates the fraction of residues that have poor fit to the electron density.

Mol	Chain	Length	Quality of chain
1	A	186	

The following table lists non-polymeric compounds that are outliers for geometric or electron-density-fit criteria:

Mol	Type	Chain	Res	Geometry	Electron density
2	NDP	A	187	-	X
4	GOL	A	189	-	X
4	GOL	A	190	-	X
4	GOL	A	191	-	X

## 2 Entry composition i

There are 5 unique types of molecules in this entry. The entry contains 1991 atoms, of which 0 are hydrogen and 0 are deuterium.

In the tables below, the ZeroOcc column contains the number of atoms modelled with zero occupancy, the AltConf column contains the number of residues with at least one atom in alternate conformation and the Trace column contains the number of residues modelled with at most 2 atoms.

- Molecule 1 is a protein called Dihydrofolate reductase.

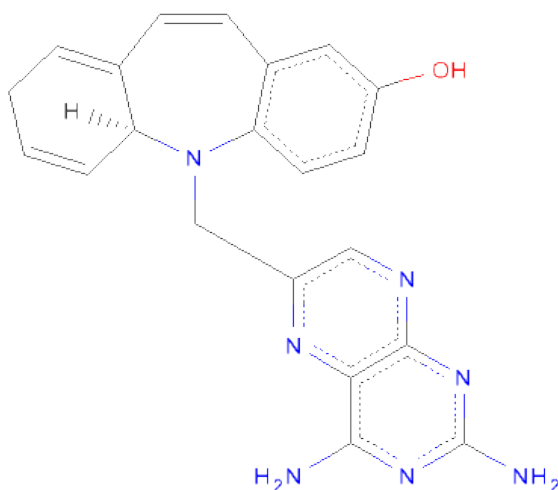
Mol	Chain	Residues	Atoms					ZeroOcc	AltConf	Trace
			Total	C	N	O	S			
1	A	186	1580	1024	265	284	7	1	11	0

- Molecule 2 is NADPH DIHYDRO-NICOTINAMIDE-ADENINE-DINUCLEOTIDEPHOSPHATE (three-letter code: NDP) (formula:  $C_{21}H_{30}N_7O_{17}P_3$ ).



Mol	Chain	Residues	Atoms					ZeroOcc	AltConf
			Total	C	N	O	P		
2	A	1	48	21	7	17	3	0	0

- Molecule 3 is (4AS)-5-[(2,4-DIAMINOPTERIDIN-6-YL)METHYL]-4A,5-DIHYDRO-2H-DIBENZO[B,F]AZEPIN-8-OL (three-letter code: Q22) (formula:  $C_{21}H_{19}N_7O$ ).



Mol	Chain	Residues	Atoms				ZeroOcc	AltConf
3	A	1	Total	C	N	O	0	0
			29	21	7	1		

- Molecule 4 is GLYCEROL (three-letter code: GOL) (formula:  $C_3H_8O_3$ ).



Mol	Chain	Residues	Atoms			ZeroOcc	AltConf
4	A	1	Total	C	O	0	0
			6	3	3		
4	A	1	Total	C	O	0	0
			6	3	3		
4	A	1	Total	C	O	0	0
			6	3	3		

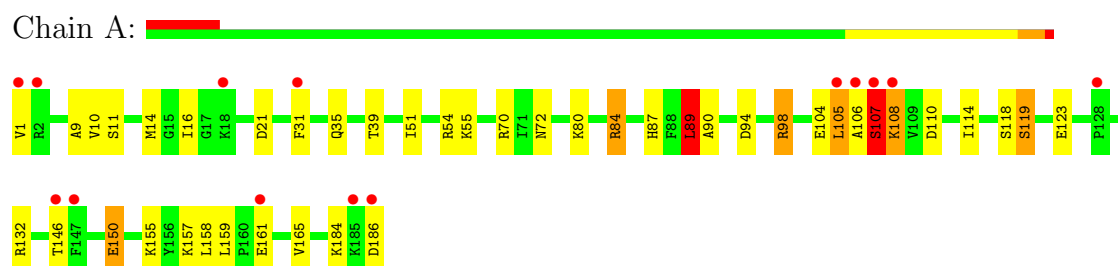
- Molecule 5 is water.

Mol	Chain	Residues	Atoms		ZeroOcc	AltConf
5	A	316	Total 316	O 316	0	0

### 3 Residue-property plots i

These plots are drawn for all protein, RNA and DNA chains in the entry. The first graphic for a chain summarises the proportions of errors displayed in the second graphic. The second graphic shows the sequence view annotated by issues in geometry and electron density. Residues are color-coded according to the number of geometric quality criteria for which they contain at least one outlier: green = 0, yellow = 1, orange = 2 and red = 3 or more. A red dot above a residue indicates a poor fit to the electron density ( $RSRZ > 2$ ). Stretches of 2 or more consecutive residues without any outlier are shown as a green connector. Residues present in the sample, but not in the model, are shown in grey.

#### ● Molecule 1: Dihydrofolate reductase



## 4 Data and refinement statistics

Property	Value	Source
Space group	P 1 21 1	Depositor
Cell constants a, b, c, $\alpha$ , $\beta$ , $\gamma$	41.48Å 61.30Å 43.59Å 90.00° 117.23° 90.00°	Depositor
Resolution (Å)	31.61 – 1.40 31.60 – 1.40	Depositor EDS
% Data completeness (in resolution range)	97.6 (31.61-1.40) 97.6 (31.60-1.40)	Depositor EDS
$R_{merge}$	0.08	Depositor
$R_{sym}$	0.06	Depositor
$\langle I/\sigma(I) \rangle$ <sup>1</sup>	3.24 (at 1.40Å)	Xtriage
Refinement program	REFMAC 5.2.0019	Depositor
R, $R_{free}$	0.199 , 0.236 0.232 , 0.254	Depositor DCC
$R_{free}$ test set	1849 reflections (4.96%)	DCC
Wilson B-factor (Å <sup>2</sup> )	13.0	Xtriage
Anisotropy	0.069	Xtriage
Bulk solvent $k_{sol}$ (e/Å <sup>3</sup> ), $B_{sol}$ (Å <sup>2</sup> )	0.38 , 48.3	EDS
Estimated twinning fraction	0.033 for h,-k,-h-l	Xtriage
L-test for twinning	$\langle  L  \rangle = 0.48$ , $\langle L^2 \rangle = 0.31$	Xtriage
Outliers	0 of 37306 reflections	Xtriage
$F_o, F_c$ correlation	0.94	EDS
Total number of atoms	1991	wwPDB-VP
Average B, all atoms (Å <sup>2</sup> )	20.0	wwPDB-VP

Xtriage's analysis on translational NCS is as follows: *The largest off-origin peak in the Patterson function is 10.83% of the height of the origin peak. No significant pseudotranslation is detected.*

<sup>1</sup>Intensities estimated from amplitudes.

## 5 Model quality

### 5.1 Standard geometry

Bond lengths and bond angles in the following residue types are not validated in this section: GOL, Q22, NDP

The Z score for a bond length (or angle) is the number of standard deviations the observed value is removed from the expected value. A bond length (or angle) with  $|Z| > 5$  is considered an outlier worth inspection. RMSZ is the root-mean-square of all Z scores of the bond lengths (or angles).

Mol	Chain	Bond lengths		Bond angles	
		RMSZ	$\# Z  > 5$	RMSZ	$\# Z  > 5$
1	A	2.14	3/1640 (0.2%)	0.82	4/2212 (0.2%)

Chiral center outliers are detected by calculating the chiral volume of a chiral center and verifying if the center is modelled as a planar moiety or with the opposite hand. A planarity outlier is detected by checking planarity of atoms in a peptide group, atoms in a mainchain group or atoms of a sidechain that are expected to be planar.

Mol	Chain	#Chirality outliers	#Planarity outliers
1	A	0	2

All (3) bond length outliers are listed below:

Mol	Chain	Res	Type	Atoms	Z	Observed(Å)	Ideal(Å)
1	A	150	GLU	CD-OE1	56.93	1.88	1.25
1	A	150	GLU	CD-OE2	55.80	1.87	1.25
1	A	150	GLU	CG-CD	26.06	1.91	1.51

All (4) bond angle outliers are listed below:

Mol	Chain	Res	Type	Atoms	Z	Observed(°)	Ideal(°)
1	A	150	GLU	OE1-CD-OE2	-13.41	107.21	123.30
1	A	107	SER	C-N-CA	-8.21	101.16	121.70
1	A	89[A]	LEU	CA-CB-CG	6.51	130.27	115.30
1	A	89[B]	LEU	CA-CB-CG	6.51	130.27	115.30

There are no chirality outliers.

All (2) planarity outliers are listed below:



Mol	Chain	Res	Type	Group
1	A	104	GLU	Mainchain
1	A	150	GLU	Sidechain

## 5.2 Close contacts ⓘ

In the following table, the Non-H and H(model) columns list the number of non-hydrogen atoms and hydrogen atoms in the chain respectively. The H(added) column lists the number of hydrogens added by MolProbity. The Clashes column lists the number of clashes within the asymmetric unit, and the number in parentheses is this value normalized per 1000 atoms of the molecule in the chain. The Symm-Clashes column gives symmetry related clashes, in the same way as for the Clashes column.

Mol	Chain	Non-H	H(model)	H(added)	Clashes	Symm-Clashes
1	A	1580	0	1632	43	0
2	A	48	0	26	8	0
3	A	29	0	18	8	0
4	A	18	0	24	2	0
5	A	316	0	0	10	1
All	All	1991	0	1700	45	1

Clashscore is defined as the number of clashes calculated for the entry per 1000 atoms (including hydrogens) of the entry. The overall clashscore for this entry is 13.

All (45) close contacts within the same asymmetric unit are listed below.

Atom-1	Atom-2	Distance(Å)	Clash(Å)
1:A:107:SER:HB3	5:A:332:HOH:O	0.91	1.07
1:A:84:ARG:HG3	1:A:84:ARG:HH21	1.22	1.00
1:A:72:ASN:H	1:A:87:HIS:HD2	1.13	0.93
1:A:31[B]:PHE:CZ	3:A:188:Q22:C'9	2.52	0.93
1:A:106:ALA:HB1	5:A:524:HOH:O	0.73	0.90
1:A:72:ASN:H	1:A:87:HIS:CD2	1.96	0.82
1:A:119[A]:SER:OG	2:A:187:NDP:O1N	1.98	0.82
1:A:55:LYS:HG3	2:A:187:NDP:H51A	1.66	0.78
1:A:161:GLU:HG2	5:A:514:HOH:O	1.84	0.76
1:A:132:ARG:NH1	5:A:494:HOH:O	2.19	0.75
1:A:9:ALA:H	2:A:187:NDP:H72N	1.35	0.73
4:A:191:GOL:H11	5:A:544:HOH:O	1.91	0.70
1:A:31[B]:PHE:HZ	3:A:188:Q22:C'9	2.05	0.70
1:A:105:LEU:O	1:A:108:LYS:N	2.21	0.68
1:A:55:LYS:CG	2:A:187:NDP:H51A	2.26	0.65
1:A:123[A]:GLU:HG3	5:A:302:HOH:O	1.98	0.64
1:A:84:ARG:HG3	1:A:84:ARG:NH2	2.00	0.62

*Continued on next page...*

Continued from previous page...

Atom-1	Atom-2	Distance(Å)	Clash(Å)
1:A:31[B]:PHE:CZ	3:A:188:Q22:O1	2.53	0.61
1:A:31[B]:PHE:CZ	3:A:188:Q22:C11	2.88	0.56
1:A:39:THR:O	4:A:190:GOL:H32	2.06	0.56
1:A:84:ARG:CG	1:A:84:ARG:HH21	2.08	0.54
1:A:89[B]:LEU:HD23	1:A:90:ALA:N	2.25	0.52
1:A:35[B]:GLN:HE21	1:A:70:ARG:HH12	1.56	0.51
2:A:187:NDP:H42N	3:A:188:Q22:N5'	2.26	0.51
1:A:35[B]:GLN:NE2	1:A:70:ARG:HH12	2.07	0.51
1:A:1:VAL:HG22	1:A:110:ASP:O	2.10	0.51
1:A:107:SER:CB	5:A:332:HOH:O	1.80	0.51
1:A:54:ARG:H	2:A:187:NDP:H4B	1.76	0.50
1:A:94:ASP:O	1:A:98:ARG:HD2	2.11	0.49
1:A:31[B]:PHE:HZ	3:A:188:Q22:C11	2.23	0.49
1:A:10[B]:VAL:HG12	1:A:11:SER:O	2.12	0.49
1:A:21:ASP:HA	3:A:188:Q22:H'3	1.94	0.48
1:A:16:ILE:O	2:A:187:NDP:H2N	2.13	0.48
1:A:165:VAL:HG13	5:A:565:HOH:O	2.14	0.48
1:A:10[B]:VAL:CG1	1:A:14:MET:HA	2.44	0.47
1:A:80:LYS:HG2	5:A:572:HOH:O	2.15	0.46
1:A:21:ASP:HA	3:A:188:Q22:C'3	2.47	0.45
1:A:155:LYS:HE2	1:A:184:LYS:CD	2.47	0.45
1:A:10[A]:VAL:HG22	1:A:14:MET:HA	1.98	0.45
1:A:51:ILE:HB	1:A:114:ILE:HD13	1.98	0.44
1:A:1:VAL:HG11	5:A:433:HOH:O	2.17	0.44
1:A:157:LYS:HE2	1:A:159:LEU:HD23	1.99	0.44
1:A:54:ARG:N	2:A:187:NDP:H4B	2.34	0.42
1:A:105:LEU:C	1:A:108:LYS:H	2.16	0.41
1:A:118:SER:HB2	1:A:146:THR:HG22	2.03	0.41

All (1) symmetry-related close contacts are listed below. The label for Atom-2 includes the symmetry operator and encoded unit-cell translations to be applied.

Atom-1	Atom-2	Distance(Å)	Clash(Å)
5:A:320:HOH:O	5:A:565:HOH:O[2_545]	2.05	0.15

## 5.3 Torsion angles

### 5.3.1 Protein backbone ⓘ

In the following table, the Percentiles column shows the percent Ramachandran outliers of the chain as a percentile score with respect to all X-ray entries followed by that with respect to entries of similar resolution. The Analysed column shows the number of residues for which the backbone

conformation was analysed, and the total number of residues.

Mol	Chain	Analysed	Favoured	Allowed	Outliers	Percentiles	
1	A	195/186 (105%)	192 (98%)	3 (2%)	0	100	100

There are no Ramachandran outliers to report.

### 5.3.2 Protein sidechains ⓘ

In the following table, the Percentiles column shows the percent sidechain outliers of the chain as a percentile score with respect to all X-ray entries followed by that with respect to entries of similar resolution. The Analysed column shows the number of residues for which the sidechain conformation was analysed, and the total number of residues.

Mol	Chain	Analysed	Rotameric	Outliers	Percentiles	
1	A	179/168 (106%)	167 (93%)	12 (7%)	23	2

All (12) residues with a non-rotameric sidechain are listed below:

Mol	Chain	Res	Type
1	A	84	ARG
1	A	89[A]	LEU
1	A	89[B]	LEU
1	A	98	ARG
1	A	105	LEU
1	A	107	SER
1	A	108	LYS
1	A	119[A]	SER
1	A	119[B]	SER
1	A	158[A]	LEU
1	A	158[B]	LEU
1	A	186	ASP

Some sidechains can be flipped to improve hydrogen bonding and reduce clashes. All (2) such sidechains are listed below:

Mol	Chain	Res	Type
1	A	87	HIS
1	A	130	HIS

### 5.3.3 RNA ⓘ

There are no RNA chains in this entry.

## 5.4 Non-standard residues in protein, DNA, RNA chains ⓘ

There are no non-standard protein/DNA/RNA residues in this entry.

## 5.5 Carbohydrates ⓘ

There are no carbohydrates in this entry.

## 5.6 Ligand geometry ⓘ

5 ligands are modelled in this entry.

In the following table, the Counts columns list the number of bonds (or angles) for which Mogul statistics could be retrieved, the number of bonds (or angles) that are observed in the model and the number of bonds (or angles) that are defined in the chemical component dictionary. The Link column lists molecule types, if any, to which the group is linked. The Z score for a bond length (or angle) is the number of standard deviations the observed value is removed from the expected value. A bond length (or angle) with  $|Z| > 2$  is considered an outlier worth inspection. RMSZ is the root-mean-square of all Z scores of the bond lengths (or angles).

Mol	Type	Chain	Res	Link	Bond lengths			Bond angles		
					Counts	RMSZ	$\# Z  > 2$	Counts	RMSZ	$\# Z  > 2$
2	NDP	A	187	-	52,52,52	1.56	8 (15%)	80,80,80	1.69	11 (13%)
3	Q22	A	188	-	33,33,33	2.12	9 (27%)	48,48,48	2.61	15 (31%)
4	GOL	A	189	-	5,5,5	0.27	0	5,5,5	0.58	0
4	GOL	A	190	-	5,5,5	0.36	0	5,5,5	0.40	0
4	GOL	A	191	-	5,5,5	0.55	0	5,5,5	0.31	0

In the following table, the Chirals column lists the number of chiral outliers, the number of chiral centers analysed, the number of these observed in the model and the number defined in the chemical component dictionary. Similar counts are reported in the Torsion and Rings columns. '-' means no outliers of that kind were identified.

Mol	Type	Chain	Res	Link	Chirals	Torsions	Rings
2	NDP	A	187	-	-	0/35/77/77	0/3/5/5
3	Q22	A	188	-	-	0/4/28/28	0/0/5/5
4	GOL	A	189	-	-	0/4/4/4	0/0/0/0
4	GOL	A	190	-	-	0/4/4/4	0/0/0/0
4	GOL	A	191	-	-	0/4/4/4	0/0/0/0

All (17) bond length outliers are listed below:

Mol	Chain	Res	Type	Atoms	Z	Observed(Å)	Ideal(Å)
3	A	188	Q22	C7-N'0	-6.92	1.28	1.42
2	A	187	NDP	C4N-C3N	-5.57	1.39	1.50
2	A	187	NDP	C4N-C5N	-4.39	1.39	1.49
3	A	188	Q22	C'7-C6	-4.35	1.37	1.46
3	A	188	Q22	C9'-C6'	3.56	1.57	1.51
3	A	188	Q22	C'0-N'0	3.22	1.49	1.47
3	A	188	Q22	C'6-C6	3.17	1.38	1.34
3	A	188	Q22	C'3-C'4	-3.08	1.38	1.48
2	A	187	NDP	C4A-N9A	-3.03	1.33	1.37
2	A	187	NDP	P2B-O1X	3.00	1.61	1.51
2	A	187	NDP	C6N-C5N	2.95	1.39	1.33
2	A	187	NDP	C7N-C3N	2.75	1.53	1.47
2	A	187	NDP	C2N-C3N	2.43	1.39	1.34
3	A	188	Q22	C'3-C'2	-2.33	1.38	1.47
3	A	188	Q22	C'7-C7	-2.28	1.37	1.41
3	A	188	Q22	C'1-C'2	2.12	1.38	1.32
2	A	187	NDP	C2N-N1N	2.09	1.40	1.36

All (26) bond angle outliers are listed below:

Mol	Chain	Res	Type	Atoms	Z	Observed(°)	Ideal(°)
2	A	187	NDP	N3A-C2A-N1A	-8.33	121.75	128.71
3	A	188	Q22	C'3-C'2-C'1	-7.81	120.39	123.29
3	A	188	Q22	C7-C'7-C6	6.40	128.25	122.92
3	A	188	Q22	C9-C7-N'0	-5.31	113.56	121.57
2	A	187	NDP	C4B-O4B-C1B	-5.17	104.13	109.75
3	A	188	Q22	C7'-N8'-C8	4.48	121.89	116.85
3	A	188	Q22	N1'-C2'-N3'	-4.46	120.49	127.54
2	A	187	NDP	N3A-C4A-N9A	4.41	133.39	125.43
3	A	188	Q22	C2'-N1'-C8	4.37	121.10	115.30
3	A	188	Q22	N8'-C8-N1'	4.31	122.00	116.19
2	A	187	NDP	PN-O3-PA	-3.99	119.98	131.68
3	A	188	Q22	C6'-C9'-N'0	3.62	120.13	113.79
3	A	188	Q22	C'4-C'3-C'2	3.52	121.25	113.77
3	A	188	Q22	C7'-C6'-N5'	-3.38	118.39	120.75
3	A	188	Q22	C9'-N'0-C7	3.27	122.39	118.29
2	A	187	NDP	O4B-C1B-C2B	-2.95	104.19	106.95
3	A	188	Q22	C'8-C'7-C6	-2.95	110.84	117.72
2	A	187	NDP	C5A-C4A-N3A	-2.91	119.36	125.70
2	A	187	NDP	C5N-C4N-C3N	2.84	120.29	112.60
3	A	188	Q22	C6'-C7'-N8'	-2.79	120.22	123.16
3	A	188	Q22	C'7-C6-C'6	-2.39	125.22	130.18
2	A	187	NDP	C4A-C5A-N7A	-2.38	107.48	109.52

*Continued on next page...*

*Continued from previous page...*

Mol	Chain	Res	Type	Atoms	Z	Observed(°)	Ideal(°)
2	A	187	NDP	C4D-O4D-C1D	-2.36	104.12	109.51
2	A	187	NDP	C2A-N3A-C4A	2.28	120.49	114.01
3	A	188	Q22	C8-C4-N5'	-2.27	119.87	122.66
2	A	187	NDP	C3N-C2N-N1N	-2.27	119.83	123.05

There are no chirality outliers.

There are no torsion outliers.

There are no ring outliers.

## 5.7 Other polymers ⓘ

There are no such residues in this entry.

## 5.8 Polymer linkage issues

There are no chain breaks in this entry.

## 6 Fit of model and data ⓘ

### 6.1 Protein, DNA and RNA chains ⓘ

In the following table, the column labelled ‘#RSRZ> 2’ contains the number (and percentage) of RSRZ outliers, followed by percent RSRZ outliers for the chain as percentile scores relative to all X-ray entries and entries of similar resolution. The OWAB column contains the minimum, median, 95<sup>th</sup> percentile and maximum values of the occupancy-weighted average B-factor per residue. The column labelled ‘Q< 0.9’ lists the number of (and percentage) of residues with an average occupancy less than 0.9.

Mol	Chain	Analysed	<RSRZ>	#RSRZ>2	OWAB(Å <sup>2</sup> )	Q<0.9
1	A	186/186 (100%)	0.49	14 (7%) 14 13	8, 15, 27, 35	5 (2%)

All (14) RSRZ outliers are listed below:

Mol	Chain	Res	Type	RSRZ
1	A	1	VAL	9.1
1	A	106	ALA	6.0
1	A	107	SER	4.6
1	A	186	ASP	4.5
1	A	105	LEU	4.0
1	A	2	ARG	3.8
1	A	161	GLU	3.3
1	A	108	LYS	2.7
1	A	31[A]	PHE	2.6
1	A	185	LYS	2.2
1	A	147	PHE	2.2
1	A	128	PRO	2.2
1	A	18	LYS	2.1
1	A	146	THR	2.1

### 6.2 Non-standard residues in protein, DNA, RNA chains ⓘ

There are no non-standard protein/DNA/RNA residues in this entry.

### 6.3 Carbohydrates ⓘ

There are no carbohydrates in this entry.

## 6.4 Ligands

In the following table, the Atoms column lists the number of modelled atoms in the group and the number defined in the chemical component dictionary. LLDF column lists the quality of electron density of the group with respect to its neighbouring residues in protein, DNA or RNA chains. The B-factors column lists the minimum, median, 95<sup>th</sup> percentile and maximum values of B factors of atoms in the group. The column labelled 'Q< 0.9' lists the number of atoms with occupancy less than 0.9.

Mol	Type	Chain	Res	Atoms	RSR	LLDF	B-factors(Å <sup>2</sup> )	Q<0.9
4	GOL	A	190	6/6	0.24	5.61	16,26,28,30	0
4	GOL	A	191	6/6	0.32	5.60	26,29,30,31	0
4	GOL	A	189	6/6	0.25	3.47	33,34,34,34	0
2	NDP	A	187	48/48	0.26	3.37	8,11,21,25	0
3	Q22	A	188	29/29	0.12	0.74	10,24,28,28	0

## 6.5 Other polymers

There are no such residues in this entry.