



Full wwPDB X-ray Structure Validation Report ⓘ

Feb 27, 2014 – 05:51 AM GMT

PDB ID : 4DBM
Title : Aplysia californica-AChBP in complex with triazole 18
Authors : Nemecz, A.; Yamauchi, J.G.; Kim, C.
Deposited on : 2012-01-16
Resolution : 2.30 Å(reported)

This is a full wwPDB validation report for a publicly released PDB entry.
We welcome your comments at validation@mail.wwpdb.org
A user guide is available at <http://wwpdb.org/ValidationPDFNotes.html>

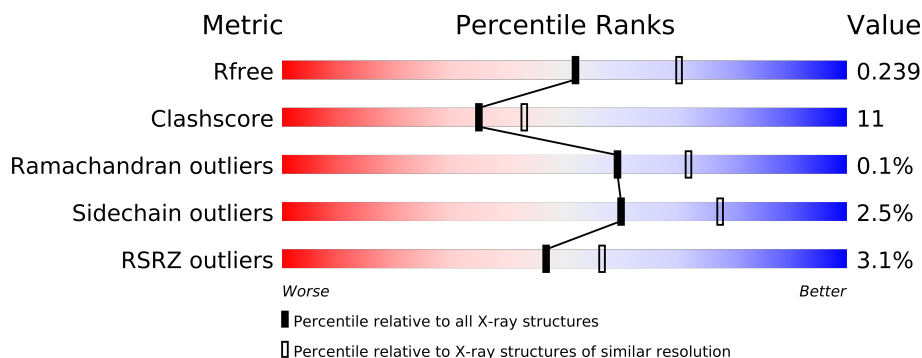
The following versions of software and data (see [references](#)) were used in the production of this report:

MolProbity : 4.02b-467
Mogul : 1.15 2013
Xtriage (Phenix) : dev-1323
EDS : stable22639
Percentile statistics : 21963
Refmac : 5.8.0049
CCP4 : 6.3.0 (Settle)
Ideal geometry (proteins) : Engh & Huber (2001)
Ideal geometry (DNA, RNA) : Parkinson et. al. (1996)
Validation Pipeline (wwPDB-VP) : stable22683

1 Overall quality at a glance

The reported resolution of this entry is 2.30 Å.

Percentile scores (ranging between 0-100) for global validation metrics of the entry are shown in the following graphic. The table shows the number of entries on which the scores are based.



Metric	Whole archive (#Entries)	Similar resolution (#Entries, resolution range(Å))
R_{free}	66092	2929 (2.30-2.30)
Clashscore	79885	3679 (2.30-2.30)
Ramachandran outliers	78287	3642 (2.30-2.30)
Sidechain outliers	78261	3641 (2.30-2.30)
RSRZ outliers	66119	2930 (2.30-2.30)

The table below summarises the geometric issues observed across the polymeric chains and their fit to the electron density. The red, orange, yellow and green segments on the lower bar indicate the fraction of residues that contain outliers for ≥ 3 , 2, 1 and 0 types of geometric quality criteria. The upper red bar (where present) indicates the fraction of residues that have poor fit to the electron density.

Mol	Chain	Length	Quality of chain
1	A	230	
1	B	230	
1	C	230	
1	D	230	
1	E	230	

The following table lists non-polymeric compounds that are outliers for geometric or electron-density-fit criteria:

Mol	Type	Chain	Res	Geometry	Electron density
2	NAG	A	301	-	X
3	OJ0	A	302	-	X
3	OJ0	B	300	-	X

Continued on next page...

Continued from previous page...

Mol	Type	Chain	Res	Geometry	Electron density
3	OJ0	C	300	-	X
3	OJ0	D	300	-	X
3	OJ0	E	306	-	X

2 Entry composition

There are 5 unique types of molecules in this entry. The entry contains 9095 atoms, of which 0 are hydrogen and 0 are deuterium.

In the tables below, the ZeroOcc column contains the number of atoms modelled with zero occupancy, the AltConf column contains the number of residues with at least one atom in alternate conformation and the Trace column contains the number of residues modelled with at most 2 atoms.

- Molecule 1 is a protein called Soluble acetylcholine receptor.

Mol	Chain	Residues	Atoms					ZeroOcc	AltConf	Trace
1	A	211	Total	C	N	O	S	0	1	0
			1692	1067	279	337	9			
1	B	209	Total	C	N	O	S	0	1	0
			1675	1059	276	331	9			
1	C	206	Total	C	N	O	S	0	2	0
			1658	1049	272	329	8			
1	D	213	Total	C	N	O	S	0	2	0
			1718	1083	279	347	9			
1	E	209	Total	C	N	O	S	0	1	0
			1674	1057	276	332	9			

There are 55 discrepancies between the modelled and reference sequences:

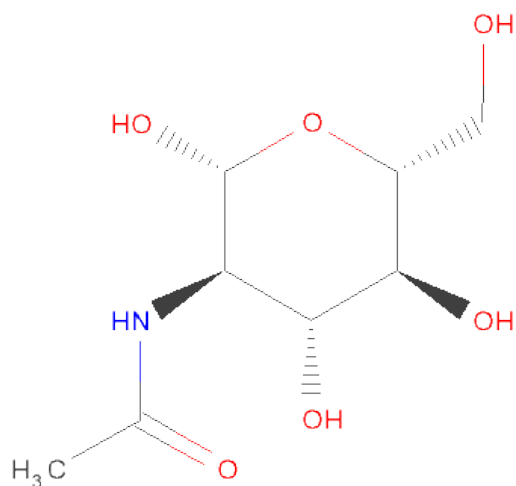
Chain	Residue	Modelled	Actual	Comment	Reference
A	-8	ASP	-	EXPRESSION TAG	UNP Q8WSF8
A	-7	TYR	-	EXPRESSION TAG	UNP Q8WSF8
A	-6	LYS	-	EXPRESSION TAG	UNP Q8WSF8
A	-5	ASP	-	EXPRESSION TAG	UNP Q8WSF8
A	-4	ASP	-	EXPRESSION TAG	UNP Q8WSF8
A	-3	ASP	-	EXPRESSION TAG	UNP Q8WSF8
A	-2	ASP	-	EXPRESSION TAG	UNP Q8WSF8
A	-1	LYS	-	EXPRESSION TAG	UNP Q8WSF8
A	0	LEU	-	EXPRESSION TAG	UNP Q8WSF8
A	220	SER	-	EXPRESSION TAG	UNP Q8WSF8
A	221	ARG	-	EXPRESSION TAG	UNP Q8WSF8
B	-8	ASP	-	EXPRESSION TAG	UNP Q8WSF8
B	-7	TYR	-	EXPRESSION TAG	UNP Q8WSF8
B	-6	LYS	-	EXPRESSION TAG	UNP Q8WSF8
B	-5	ASP	-	EXPRESSION TAG	UNP Q8WSF8
B	-4	ASP	-	EXPRESSION TAG	UNP Q8WSF8
B	-3	ASP	-	EXPRESSION TAG	UNP Q8WSF8
B	-2	ASP	-	EXPRESSION TAG	UNP Q8WSF8
B	-1	LYS	-	EXPRESSION TAG	UNP Q8WSF8

Continued on next page...

Continued from previous page...

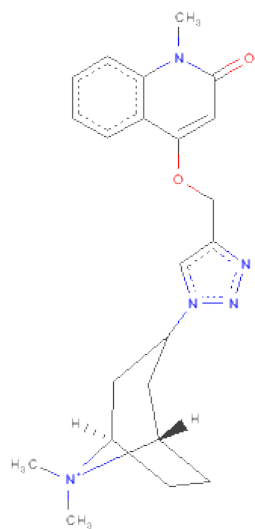
Chain	Residue	Modelled	Actual	Comment	Reference
B	0	LEU	-	EXPRESSION TAG	UNP Q8WSF8
B	220	SER	-	EXPRESSION TAG	UNP Q8WSF8
B	221	ARG	-	EXPRESSION TAG	UNP Q8WSF8
C	-8	ASP	-	EXPRESSION TAG	UNP Q8WSF8
C	-7	TYR	-	EXPRESSION TAG	UNP Q8WSF8
C	-6	LYS	-	EXPRESSION TAG	UNP Q8WSF8
C	-5	ASP	-	EXPRESSION TAG	UNP Q8WSF8
C	-4	ASP	-	EXPRESSION TAG	UNP Q8WSF8
C	-3	ASP	-	EXPRESSION TAG	UNP Q8WSF8
C	-2	ASP	-	EXPRESSION TAG	UNP Q8WSF8
C	-1	LYS	-	EXPRESSION TAG	UNP Q8WSF8
C	0	LEU	-	EXPRESSION TAG	UNP Q8WSF8
C	220	SER	-	EXPRESSION TAG	UNP Q8WSF8
C	221	ARG	-	EXPRESSION TAG	UNP Q8WSF8
D	-8	ASP	-	EXPRESSION TAG	UNP Q8WSF8
D	-7	TYR	-	EXPRESSION TAG	UNP Q8WSF8
D	-6	LYS	-	EXPRESSION TAG	UNP Q8WSF8
D	-5	ASP	-	EXPRESSION TAG	UNP Q8WSF8
D	-4	ASP	-	EXPRESSION TAG	UNP Q8WSF8
D	-3	ASP	-	EXPRESSION TAG	UNP Q8WSF8
D	-2	ASP	-	EXPRESSION TAG	UNP Q8WSF8
D	-1	LYS	-	EXPRESSION TAG	UNP Q8WSF8
D	0	LEU	-	EXPRESSION TAG	UNP Q8WSF8
D	220	SER	-	EXPRESSION TAG	UNP Q8WSF8
D	221	ARG	-	EXPRESSION TAG	UNP Q8WSF8
E	-8	ASP	-	EXPRESSION TAG	UNP Q8WSF8
E	-7	TYR	-	EXPRESSION TAG	UNP Q8WSF8
E	-6	LYS	-	EXPRESSION TAG	UNP Q8WSF8
E	-5	ASP	-	EXPRESSION TAG	UNP Q8WSF8
E	-4	ASP	-	EXPRESSION TAG	UNP Q8WSF8
E	-3	ASP	-	EXPRESSION TAG	UNP Q8WSF8
E	-2	ASP	-	EXPRESSION TAG	UNP Q8WSF8
E	-1	LYS	-	EXPRESSION TAG	UNP Q8WSF8
E	0	LEU	-	EXPRESSION TAG	UNP Q8WSF8
E	220	SER	-	EXPRESSION TAG	UNP Q8WSF8
E	221	ARG	-	EXPRESSION TAG	UNP Q8WSF8

- Molecule 2 is SUGAR (N-ACETYL-D-GLUCOSAMINE) (three-letter code: NAG) (formula: $C_8H_{15}NO_6$).



Mol	Chain	Residues	Atoms				ZeroOcc	AltConf
2	A	1	Total	C	N	O	0	0
			14	8	1	5		

- Molecule 3 is (3-EXO)-8,8-DIMETHYL-3-(4-{[(1-METHYL-2-OXO-1,2-DIHYDROQUINOLIN-4-YL)OXY]METHYL}-1H-1,2,3-TRIAZOL-1-YL)-8-AZONIABICYCLO[3.2.1]OCTANE (three-letter code: OJ0) (formula: C₂₂H₂₈N₅O₂).



Mol	Chain	Residues	Atoms				ZeroOcc	AltConf
3	A	1	Total	C	N	O	18	0
			29	22	5	2		
3	B	1	Total	C	N	O	19	0
			29	22	5	2		

Continued on next page...

Continued from previous page...

Mol	Chain	Residues	Atoms				ZeroOcc	AltConf
3	C	1	Total	C	N	O	0	0
			29	22	5	2		
3	D	1	Total	C	N	O	0	0
			29	22	5	2		
3	E	1	Total	C	N	O	0	0
			29	22	5	2		

- Molecule 4 is a polymer of unknown type called SUGAR (5-MER).

Mol	Chain	Residues	Atoms				ZeroOcc	AltConf
4	E	5	Total	C	N	O	0	0
			61	34	2	25		

There are 11 discrepancies between the modelled and reference sequences:

Chain	Residue	Modelled	Actual	Comment	Reference
E	-8	ASP	-	EXPRESSION TAG	UNP Q8WSF8
E	-7	TYR	-	EXPRESSION TAG	UNP Q8WSF8
E	-6	LYS	-	EXPRESSION TAG	UNP Q8WSF8
E	-5	ASP	-	EXPRESSION TAG	UNP Q8WSF8
E	-4	ASP	-	EXPRESSION TAG	UNP Q8WSF8
E	-3	ASP	-	EXPRESSION TAG	UNP Q8WSF8
E	-2	ASP	-	EXPRESSION TAG	UNP Q8WSF8
E	-1	LYS	-	EXPRESSION TAG	UNP Q8WSF8
E	0	LEU	-	EXPRESSION TAG	UNP Q8WSF8
E	220	SER	-	EXPRESSION TAG	UNP Q8WSF8
E	221	ARG	-	EXPRESSION TAG	UNP Q8WSF8

- Molecule 5 is water.

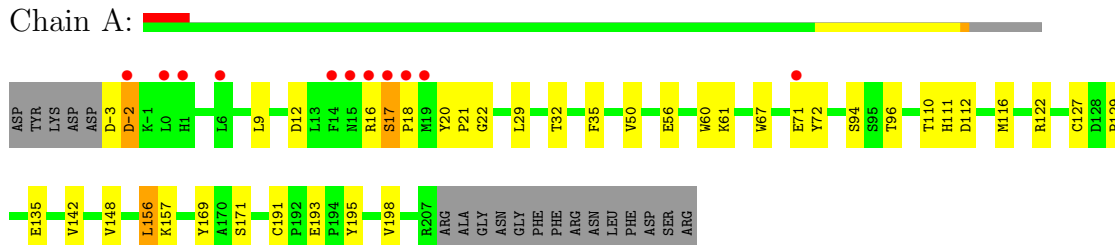
Mol	Chain	Residues	Atoms		ZeroOcc	AltConf
5	A	100	Total	O	0	0
			100	100		
5	B	92	Total	O	0	0
			92	92		
5	C	85	Total	O	0	0
			85	85		
5	D	83	Total	O	0	0
			83	83		
5	E	98	Total	O	0	0
			98	98		

3 Residue-property plots

These plots are drawn for all protein, RNA and DNA chains in the entry. The first graphic for a chain summarises the proportions of errors displayed in the second graphic. The second graphic shows the sequence view annotated by issues in geometry and electron density. Residues are color-coded according to the number of geometric quality criteria for which they contain at least one outlier: green = 0, yellow = 1, orange = 2 and red = 3 or more. A red dot above a residue indicates a poor fit to the electron density ($RSRZ > 2$). Stretches of 2 or more consecutive residues without any outlier are shown as a green connector. Residues present in the sample, but not in the model, are shown in grey.

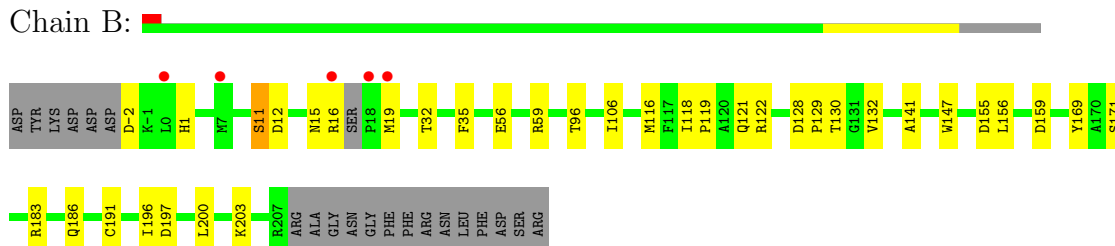
- Molecule 1: Soluble acetylcholine receptor

Chain A:



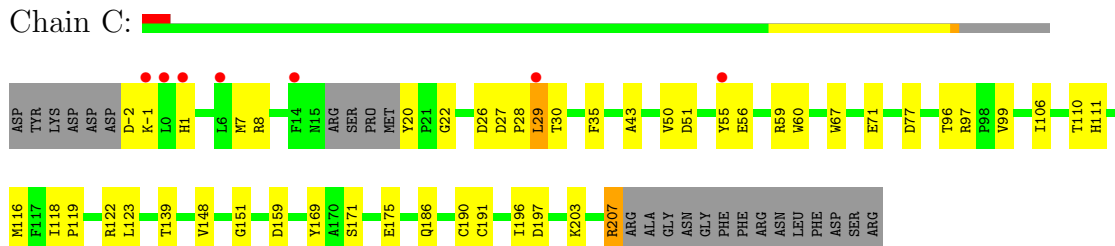
- Molecule 1: Soluble acetylcholine receptor

Chain B:



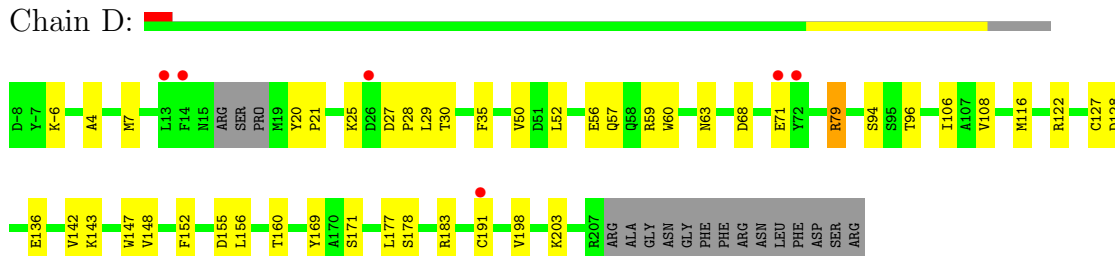
- Molecule 1: Soluble acetylcholine receptor

Chain C:



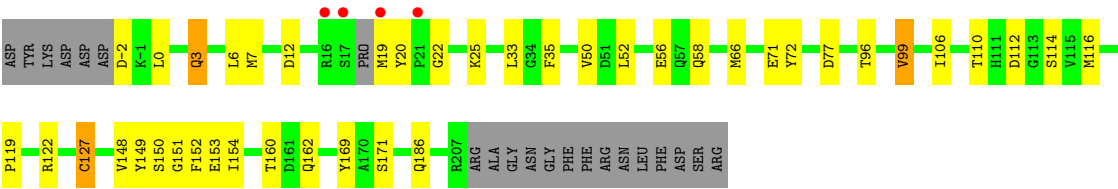
- Molecule 1: Soluble acetylcholine receptor

Chain D:



● Molecule 1: Soluble acetylcholine receptor

Chain E: 



4 Data and refinement statistics

Property	Value	Source
Space group	P 21 21 21	Depositor
Cell constants a, b, c, α , β , γ	88.34Å 115.10Å 131.38Å 90.00° 90.00° 90.00°	Depositor
Resolution (Å)	43.29 – 2.30 45.27 – 2.30	Depositor EDS
% Data completeness (in resolution range)	95.0 (43.29-2.30) 94.5 (45.27-2.30)	Depositor EDS
R_{merge}	0.07	Depositor
R_{sym}	0.07	Depositor
$\langle I/\sigma(I) \rangle$ ¹	3.63 (at 2.29Å)	Xtriage
Refinement program	PHENIX (PHENIX.REFINE: 1.7_650)	Depositor
R, R_{free}	0.194 , 0.252 0.189 , 0.239	Depositor DCC
R_{free} test set	1921 reflections (3.38%)	DCC
Wilson B-factor (Å ²)	36.6	Xtriage
Anisotropy	0.402	Xtriage
Bulk solvent k_{sol} (e/Å ³), B_{sol} (Å ²)	0.32 , 29.1	EDS
Estimated twinning fraction	No twinning to report.	Xtriage
L-test for twinning	$\langle L \rangle = 0.49$, $\langle L^2 \rangle = 0.32$	Xtriage
Outliers	0 of 59273 reflections	Xtriage
F_o, F_c correlation	0.94	EDS
Total number of atoms	9095	wwPDB-VP
Average B, all atoms (Å ²)	40.0	wwPDB-VP

Xtriage's analysis on translational NCS is as follows: *The largest off-origin peak in the Patterson function is 3.97% of the height of the origin peak. No significant pseudotranslation is detected.*

¹Intensities estimated from amplitudes.

5 Model quality

5.1 Standard geometry

Bond lengths and bond angles in the following residue types are not validated in this section: 0J0, BMA, NAG, MAN

The Z score for a bond length (or angle) is the number of standard deviations the observed value is removed from the expected value. A bond length (or angle) with $|Z| > 5$ is considered an outlier worth inspection. RMSZ is the root-mean-square of all Z scores of the bond lengths (or angles).

Mol	Chain	Bond lengths		Bond angles	
		RMSZ	$\# Z > 5$	RMSZ	$\# Z > 5$
1	A	0.42	0/1733	0.60	0/2363
1	B	0.37	0/1718	0.58	0/2340
1	C	0.39	0/1700	0.56	0/2316
1	D	0.41	0/1761	0.61	0/2399
1	E	0.39	0/1716	0.61	0/2337
All	All	0.40	0/8628	0.59	0/11755

There are no bond length outliers.

There are no bond angle outliers.

There are no chirality outliers.

There are no planarity outliers.

5.2 Close contacts

In the following table, the Non-H and H(model) columns list the number of non-hydrogen atoms and hydrogen atoms in the chain respectively. The H(added) column lists the number of hydrogens added by MolProbity. The Clashes column lists the number of clashes within the asymmetric unit, and the number in parentheses is this value normalized per 1000 atoms of the molecule in the chain. The Symm-Clashes column gives symmetry related clashes, in the same way as for the Clashes column.

Mol	Chain	Non-H	H(model)	H(added)	Clashes	Symm-Clashes
1	A	1692	0	1620	35	0
1	B	1675	0	1612	26	0
1	C	1658	0	1595	52	0
1	D	1718	0	1635	43	0
1	E	1674	0	1608	30	0
2	A	14	0	13	1	0
3	A	29	0	28	0	0

Continued on next page...

Continued from previous page...

Mol	Chain	Non-H	H(model)	H(added)	Clashes	Symm-Clashes
3	B	29	0	28	1	0
3	C	29	0	28	9	0
3	D	29	0	28	13	0
3	E	29	0	28	8	0
4	E	61	0	52	0	0
5	A	100	0	0	3	0
5	B	92	0	0	2	0
5	C	85	0	0	4	0
5	D	83	0	0	4	0
5	E	98	0	0	3	0
All	All	9095	0	8275	180	0

Clashscore is defined as the number of clashes calculated for the entry per 1000 atoms (including hydrogens) of the entry. The overall clashscore for this entry is 11.

All (180) close contacts within the same asymmetric unit are listed below.

Atom-1	Atom-2	Distance(Å)	Clash(Å)
1:A:18:PRO:HB2	1:E:7:MET:SD	1.68	1.32
1:B:12:ASP:O	1:B:16:ARG:HG2	1.47	1.12
1:D:116:MET:HB3	3:E:306:OJ0:C06	1.99	0.91
1:C:-1:LYS:HE2	1:D:27:ASP:OD1	1.72	0.88
1:A:18:PRO:CB	1:E:7:MET:SD	2.59	0.86
1:B:12:ASP:O	1:B:16:ARG:CG	2.24	0.86
1:C:-2:ASP:N	1:C:1:HIS:HD2	1.81	0.79
1:B:116:MET:HB3	3:C:300:OJ0:C05	2.13	0.78
1:C:116:MET:HB3	3:D:300:OJ0:C05	2.17	0.74
1:B:11:SER:O	1:B:15:ASN:HB2	1.87	0.74
3:C:300:OJ0:H07	3:C:300:OJ0:H11	1.69	0.73
1:C:-1:LYS:CE	1:D:27:ASP:OD1	2.36	0.73
1:A:32:THR:OG1	1:A:157:LYS:HE3	1.89	0.72
1:D:94:SER:OG	1:D:142:VAL:HG23	1.91	0.71
3:C:300:OJ0:C11	3:C:300:OJ0:H07	2.22	0.70
1:D:136:GLU:O	1:D:203:LYS:HE3	1.92	0.69
1:B:116:MET:HE2	5:B:467:HOH:O	1.91	0.69
1:C:151:GLY:HA2	1:C:196:ILE:HD12	1.74	0.69
1:B:35:PHE:CE1	1:B:56:GLU:HG3	2.26	0.69
1:C:139:THR:OG1	1:C:203[B]:LYS:HG2	1.92	0.69
1:C:29:LEU:HD21	1:C:60:TRP:HB2	1.75	0.69
1:A:193:GLU:HG2	1:A:195:TYR:CE1	2.28	0.68
3:D:300:OJ0:H07	3:D:300:OJ0:C12	2.24	0.68
3:E:306:OJ0:H07	3:E:306:OJ0:H11	1.76	0.68
2:A:301:NAG:H3	2:A:301:NAG:O7	1.93	0.68

Continued on next page...

Continued from previous page...

Atom-1	Atom-2	Distance(Å)	Clash(Å)
1:A:61:LYS:HD2	1:A:112:ASP:O	1.94	0.67
1:D:35:PHE:CE2	1:D:56:GLU:HG2	2.30	0.67
1:C:27:ASP:N	1:C:28:PRO:HD3	2.10	0.67
1:D:7:MET:SD	1:E:19:MET:N	2.68	0.67
1:A:12:ASP:O	1:A:16:ARG:HB2	1.96	0.66
1:E:116:MET:HG3	5:E:448:HOH:O	1.96	0.66
1:E:56:GLU:O	1:E:119:PRO:HD2	1.96	0.65
1:C:118:ILE:HG13	3:D:300:OJ0:H06	1.78	0.65
3:D:300:OJ0:H07	3:D:300:OJ0:C11	2.25	0.65
1:D:79:ARG:HG3	1:E:149:TYR:CE1	2.32	0.64
1:A:110:THR:HG23	5:A:499:HOH:O	1.97	0.64
3:D:300:OJ0:H11	3:D:300:OJ0:H07	1.80	0.63
1:D:79:ARG:HD2	1:D:108:VAL:HG22	1.80	0.63
1:A:116:MET:HG2	5:A:499:HOH:O	1.97	0.63
1:A:169:TYR:CZ	1:A:171:SER:HB2	2.35	0.62
1:E:35:PHE:CE1	1:E:56:GLU:HG3	2.34	0.62
1:C:35:PHE:CE2	1:C:56:GLU:HG3	2.34	0.62
1:A:193:GLU:HG2	1:A:195:TYR:HE1	1.64	0.62
1:E:20:TYR:CE2	1:E:22:GLY:HA2	2.35	0.61
1:E:169:TYR:CZ	1:E:171:SER:HB2	2.35	0.61
1:B:203:LYS:HB3	1:B:203:LYS:NZ	2.15	0.61
1:D:116:MET:HB3	3:E:306:OJ0:C05	2.30	0.61
1:A:135:GLU:CD	1:A:135:GLU:H	2.01	0.61
1:D:116:MET:HE2	5:D:412:HOH:O	2.01	0.60
1:C:59:ARG:HG2	1:C:116:MET:HG2	1.83	0.60
1:D:4:ALA:HA	1:D:7:MET:HE2	1.82	0.60
3:C:300:OJ0:H07	3:C:300:OJ0:C12	2.32	0.59
1:E:116:MET:HE2	5:E:448:HOH:O	2.01	0.59
3:E:306:OJ0:C11	3:E:306:OJ0:H07	2.32	0.59
1:A:16:ARG:O	1:A:17:SER:HB2	2.02	0.59
1:D:169:TYR:CZ	1:D:171:SER:HB2	2.38	0.58
1:A:-2:ASP:OD1	1:A:-2:ASP:N	2.24	0.58
1:E:50:VAL:HG21	1:E:127:CYS:SG	2.44	0.57
1:C:29:LEU:HD23	1:C:30:THR:H	1.69	0.57
1:E:77:ASP:HB3	1:E:110:THR:HG22	1.86	0.57
1:A:191:CYS:HB3	1:A:193:GLU:CD	2.26	0.57
1:D:106:ILE:HB	1:E:148:VAL:HG11	1.88	0.56
1:C:116:MET:HE2	5:C:477:HOH:O	2.05	0.56
1:C:29:LEU:HD23	1:C:30:THR:N	2.21	0.56
1:B:106:ILE:HB	1:C:148:VAL:HG11	1.88	0.55
1:D:68:ASP:HB3	1:D:71:GLU:HG3	1.88	0.55
1:A:50:VAL:HG21	1:A:127:CYS:SG	2.47	0.55

Continued on next page...

Continued from previous page...

Atom-1	Atom-2	Distance(Å)	Clash(Å)
1:C:77:ASP:HB3	1:C:110:THR:HG22	1.88	0.55
1:A:9:LEU:HA	1:A:72:TYR:CE1	2.43	0.54
1:C:26:ASP:C	1:C:28:PRO:HD3	2.29	0.53
1:B:186:GLN:HG3	1:B:197:ASP:OD2	2.08	0.53
1:D:156:LEU:HD23	1:D:198:VAL:HG23	1.91	0.53
1:A:191:CYS:HB3	1:A:193:GLU:OE2	2.09	0.53
1:A:96:THR:O	1:E:122:ARG:HD2	2.09	0.53
1:D:59:ARG:HG2	1:D:116:MET:HG2	1.90	0.53
1:D:116:MET:SD	3:E:306:OJ0:C04	2.97	0.53
1:C:122:ARG:HD2	1:D:96:THR:O	2.10	0.52
1:B:169:TYR:CZ	1:B:171:SER:HB2	2.45	0.52
1:E:0:LEU:H	1:E:0:LEU:HD12	1.72	0.52
1:C:67:TRP:CZ3	1:C:111:HIS:HA	2.44	0.52
1:E:12:ASP:OD2	1:E:72:TYR:OH	2.24	0.51
1:A:21:PRO:HB2	1:E:6:LEU:HD23	1.92	0.51
1:C:151:GLY:HA2	1:C:196:ILE:CD1	2.40	0.51
1:E:19:MET:O	1:E:20:TYR:C	2.50	0.51
1:B:155:ASP:OD1	1:B:196:ILE:HD13	2.10	0.51
1:D:50:VAL:HG21	1:D:127:CYS:SG	2.51	0.51
1:A:94:SER:OG	1:A:142:VAL:HG23	2.12	0.50
1:D:79:ARG:HD3	5:D:438:HOH:O	2.11	0.49
1:D:143:LYS:HE3	5:D:458:HOH:O	2.12	0.49
1:B:32:THR:HG21	1:B:59:ARG:HH21	1.78	0.48
1:C:8:ARG:NH2	1:C:71:GLU:O	2.47	0.48
1:C:175:GLU:HB3	1:C:207:ARG:HG3	1.95	0.48
3:C:300:OJ0:C11	3:C:300:OJ0:C07	2.92	0.47
3:C:300:OJ0:C07	3:C:300:OJ0:H11	2.40	0.47
1:C:67:TRP:CE3	1:C:111:HIS:HA	2.49	0.47
1:D:191:CYS:SG	3:D:300:OJ0:C09	3.02	0.47
1:B:203:LYS:HB3	1:B:203:LYS:HZ2	1.78	0.47
5:A:406:HOH:O	1:E:3:GLN:HG3	2.14	0.47
1:D:156:LEU:O	1:D:183:ARG:HD2	2.14	0.47
1:C:-2:ASP:H2	1:C:1:HIS:HD2	1.56	0.47
1:B:59:ARG:HG3	1:B:116:MET:HG2	1.96	0.47
1:D:191:CYS:SG	3:D:300:OJ0:C27	3.03	0.47
1:C:29:LEU:CD2	1:C:30:THR:N	2.77	0.47
1:C:55:TYR:HE2	5:C:474:HOH:O	1.97	0.47
1:D:94:SER:HG	1:D:142:VAL:HG23	1.79	0.47
1:E:25:LYS:HG2	1:E:152:PHE:HB3	1.96	0.47
1:D:57:GLN:HG2	5:D:480:HOH:O	2.14	0.47
1:E:33:LEU:CD2	1:E:58:GLN:HG2	2.45	0.46
1:A:156:LEU:HD23	1:A:198:VAL:HG23	1.97	0.46

Continued on next page...

Continued from previous page...

Atom-1	Atom-2	Distance(Å)	Clash(Å)
1:C:186:GLN:HG3	1:C:197:ASP:OD2	2.16	0.46
1:D:122:ARG:HD2	1:E:96:THR:O	2.16	0.46
1:B:-2:ASP:HA	1:B:1:HIS:CD2	2.50	0.46
3:E:306:0J0:H04	3:E:306:0J0:H01	1.76	0.46
1:C:7:MET:HE3	1:D:21:PRO:HD3	1.96	0.46
1:C:116:MET:HG3	5:C:477:HOH:O	2.16	0.45
1:C:55:TYR:CE1	1:D:147:TRP:HH2	2.34	0.45
1:A:67:TRP:CE3	1:A:111:HIS:HA	2.51	0.45
1:D:29:LEU:HD11	1:D:60:TRP:HB2	1.99	0.45
1:E:151:GLY:HA2	1:E:154:ILE:O	2.16	0.45
1:B:59:ARG:NH2	1:B:159:ASP:OD2	2.49	0.45
1:B:121:GLN:NE2	5:B:457:HOH:O	2.43	0.45
1:C:-2:ASP:CA	1:C:1:HIS:HD2	2.29	0.45
1:C:116:MET:SD	3:D:300:0J0:C04	3.05	0.45
1:D:4:ALA:HA	1:D:7:MET:CE	2.45	0.45
1:C:56:GLU:O	1:C:119:PRO:HD2	2.16	0.45
1:D:28:PRO:HB3	1:D:152:PHE:O	2.17	0.45
1:A:191:CYS:CB	1:A:193:GLU:OE2	2.65	0.45
1:B:118:ILE:HG13	3:C:300:0J0:H06	1.98	0.44
1:C:27:ASP:N	1:C:28:PRO:CD	2.80	0.44
1:B:156:LEU:O	1:B:183:ARG:HD2	2.17	0.44
1:E:-2:ASP:OD1	1:E:-2:ASP:O	2.35	0.44
3:E:306:0J0:H07	3:E:306:0J0:C12	2.47	0.44
3:D:300:0J0:H01	3:D:300:0J0:H04	1.81	0.44
1:A:193:GLU:CG	1:A:195:TYR:CE1	2.99	0.44
1:A:122:ARG:HD2	1:B:96:THR:O	2.16	0.44
1:B:141:ALA:HA	1:B:200:LEU:O	2.17	0.44
1:A:21:PRO:HB2	1:E:6:LEU:CD2	2.47	0.44
1:E:99:VAL:HG13	5:E:404:HOH:O	2.16	0.44
1:D:147:TRP:CH2	3:D:300:0J0:H20	2.53	0.44
1:C:7:MET:CE	1:D:21:PRO:HD3	2.47	0.43
1:A:148:VAL:HG11	1:E:106:ILE:HB	2.00	0.43
3:E:306:0J0:C07	3:E:306:0J0:H11	2.46	0.43
1:D:20:TYR:CD1	1:D:21:PRO:HD2	2.54	0.43
1:A:127:CYS:O	1:A:129:PRO:HD3	2.18	0.43
3:D:300:0J0:C07	3:D:300:0J0:C11	2.95	0.43
1:A:71:GLU:HB3	1:A:72:TYR:CD2	2.53	0.43
1:A:35:PHE:CE2	1:A:56:GLU:HG2	2.54	0.43
1:C:169:TYR:CZ	1:C:171:SER:HB2	2.53	0.43
1:A:29:LEU:HD11	1:A:60:TRP:HB2	1.99	0.43
1:C:116:MET:HB3	3:D:300:0J0:C06	2.48	0.43
1:C:106:ILE:HB	1:D:148:VAL:HG11	2.00	0.43

Continued on next page...

Continued from previous page...

Atom-1	Atom-2	Distance(Å)	Clash(Å)
1:C:-2:ASP:N	1:C:1:HIS:CD2	2.73	0.43
1:A:67:TRP:CZ3	1:A:111:HIS:HA	2.54	0.42
1:B:122:ARG:HD2	1:C:96:THR:O	2.18	0.42
1:C:99:VAL:HG12	5:C:446:HOH:O	2.19	0.42
1:C:171:SER:HB3	1:D:128:ASP:HB2	2.02	0.42
1:C:43:ALA:HA	1:C:50:VAL:HG22	2.00	0.42
1:B:56:GLU:O	1:B:119:PRO:HD2	2.20	0.42
3:C:300:0J0:H04	3:C:300:0J0:H01	1.77	0.42
1:C:190:CYS:SG	3:C:300:0J0:H16A	2.59	0.42
1:C:59:ARG:NH2	1:C:159:ASP:OD2	2.46	0.42
1:C:106:ILE:HG21	1:D:148:VAL:HG21	2.01	0.42
1:E:110:THR:OG1	1:E:114:SER:HB2	2.20	0.42
1:C:77:ASP:CB	1:C:110:THR:HG22	2.49	0.42
1:B:129:PRO:O	1:B:132:VAL:HB	2.20	0.42
1:C:29:LEU:CD2	1:C:60:TRP:HB2	2.48	0.41
1:A:191:CYS:HB3	1:A:193:GLU:OE1	2.19	0.41
1:A:20:TYR:CE2	1:A:22:GLY:HA2	2.55	0.41
1:E:66:MET:HG2	1:E:112:ASP:C	2.41	0.41
1:A:171:SER:HB3	1:B:128:ASP:HB2	2.03	0.41
1:D:52:LEU:O	1:D:122:ARG:HA	2.20	0.41
1:B:147:TRP:CE2	3:B:300:0J0:H21	2.56	0.41
1:C:20:TYR:CE2	1:C:22:GLY:HA2	2.55	0.41
1:E:160:THR:HG23	1:E:162:GLN:O	2.20	0.41
1:C:-2:ASP:O	1:C:1:HIS:HB2	2.20	0.41
1:C:-1:LYS:HG2	1:C:-1:LYS:O	2.21	0.41
1:C:51:ASP:HA	1:C:123:LEU:O	2.21	0.41
1:D:30:THR:HA	1:D:155:ASP:O	2.21	0.40
1:D:177:LEU:O	1:D:178:SER:HB3	2.21	0.40
1:D:147:TRP:O	3:D:300:0J0:H23A	2.21	0.40

There are no symmetry-related clashes.

5.3 Torsion angles

5.3.1 Protein backbone ⓘ

In the following table, the Percentiles column shows the percent Ramachandran outliers of the chain as a percentile score with respect to all X-ray entries followed by that with respect to entries of similar resolution. The Analysed column shows the number of residues for which the backbone conformation was analysed, and the total number of residues.

Mol	Chain	Analysed	Favoured	Allowed	Outliers	Percentiles	
1	A	210/230 (91%)	209 (100%)	0	1 (0%)	38	45
1	B	206/230 (90%)	203 (98%)	3 (2%)	0	100	100
1	C	204/230 (89%)	201 (98%)	3 (2%)	0	100	100
1	D	211/230 (92%)	208 (99%)	3 (1%)	0	100	100
1	E	206/230 (90%)	205 (100%)	1 (0%)	0	100	100
All	All	1037/1150 (90%)	1026 (99%)	10 (1%)	1 (0%)	59	72

All (1) Ramachandran outliers are listed below:

Mol	Chain	Res	Type
1	A	17	SER

5.3.2 Protein sidechains ⓘ

In the following table, the Percentiles column shows the percent sidechain outliers of the chain as a percentile score with respect to all X-ray entries followed by that with respect to entries of similar resolution. The Analysed column shows the number of residues for which the sidechain conformation was analysed, and the total number of residues.

Mol	Chain	Analysed	Rotameric	Outliers	Percentiles	
1	A	193/208 (93%)	190 (98%)	3 (2%)	75	88
1	B	191/208 (92%)	187 (98%)	4 (2%)	66	83
1	C	189/208 (91%)	184 (97%)	5 (3%)	59	76
1	D	196/208 (94%)	191 (97%)	5 (3%)	59	76
1	E	191/208 (92%)	183 (96%)	8 (4%)	40	53
All	All	960/1040 (92%)	935 (97%)	25 (3%)	60	76

All (25) residues with a non-rotameric sidechain are listed below:

Mol	Chain	Res	Type
1	A	-3	ASP
1	A	-2	ASP
1	A	156	LEU
1	B	11	SER
1	B	19	MET
1	B	130	THR
1	B	191	CYS
1	C	29	LEU

Continued on next page...

Continued from previous page...

Mol	Chain	Res	Type
1	C	97[A]	ARG
1	C	97[B]	ARG
1	C	191	CYS
1	C	207	ARG
1	D	-6	LYS
1	D	25	LYS
1	D	63	ASN
1	D	79	ARG
1	D	160	THR
1	E	3	GLN
1	E	52	LEU
1	E	71	GLU
1	E	99	VAL
1	E	127	CYS
1	E	150	SER
1	E	153	GLU
1	E	186	GLN

Some sidechains can be flipped to improve hydrogen bonding and reduce clashes. All (6) such sidechains are listed below:

Mol	Chain	Res	Type
1	A	57	GLN
1	B	1	HIS
1	B	38	GLN
1	C	1	HIS
1	C	162	GLN
1	C	184	GLN

5.3.3 RNA ⓘ

There are no RNA chains in this entry.

5.4 Non-standard residues in protein, DNA, RNA chains ⓘ

There are no non-standard protein/DNA/RNA residues in this entry.

5.5 Carbohydrates ⓘ

5 carbohydrates are modelled in this entry.

In the following table, the Counts columns list the number of bonds (or angles) for which Mogul statistics could be retrieved, the number of bonds (or angles) that are observed in the model and the number of bonds (or angles) that are defined in the chemical component dictionary. The Link column lists molecule types, if any, to which the group is linked. The Z score for a bond length (or angle) is the number of standard deviations the observed value is removed from the expected value. A bond length (or angle) with $|Z| > 2$ is considered an outlier worth inspection. RMSZ is the root-mean-square of all Z scores of the bond lengths (or angles).

Mol	Type	Chain	Res	Link	Bond lengths			Bond angles		
					Counts	RMSZ	$\# Z > 2$	Counts	RMSZ	$\# Z > 2$
4	NAG	E	301	1,4	12,14,15	0.65	0	15,19,21	1.01	1 (6%)
4	NAG	E	302	4	12,14,15	0.70	1 (8%)	15,19,21	1.03	0
4	BMA	E	303	4	10,11,12	0.54	0	11,15,17	1.50	3 (27%)
4	MAN	E	304	4	10,11,12	0.70	0	11,15,17	1.19	2 (18%)
4	MAN	E	305	4	10,11,12	0.76	0	11,15,17	0.89	0

In the following table, the Chirals column lists the number of chiral outliers, the number of chiral centers analysed, the number of these observed in the model and the number defined in the chemical component dictionary. Similar counts are reported in the Torsion and Rings columns. '-' means no outliers of that kind were identified.

Mol	Type	Chain	Res	Link	Chirals	Torsions	Rings
4	NAG	E	301	1,4	-	0/6/23/26	0/1/1/1
4	NAG	E	302	4	-	0/6/23/26	0/1/1/1
4	BMA	E	303	4	-	0/2/19/22	0/1/1/1
4	MAN	E	304	4	-	0/2/19/22	0/1/1/1
4	MAN	E	305	4	-	0/2/19/22	0/1/1/1

All (1) bond length outliers are listed below:

Mol	Chain	Res	Type	Atoms	Z	Observed(Å)	Ideal(Å)
4	E	302	NAG	O5-C5	-2.04	1.41	1.45

All (6) bond angle outliers are listed below:

Mol	Chain	Res	Type	Atoms	Z	Observed(°)	Ideal(°)
4	E	301	NAG	O5-C5-C6	3.08	110.21	106.98
4	E	303	BMA	O5-C5-C6	3.07	110.20	106.98
4	E	303	BMA	O5-C5-C4	-2.97	106.89	110.65
4	E	304	MAN	O5-C5-C6	2.48	109.58	106.98
4	E	304	MAN	C4-C3-C2	-2.23	107.51	110.50
4	E	303	BMA	C4-C3-C2	2.04	113.24	110.50

There are no chirality outliers.

There are no torsion outliers.

There are no ring outliers.

5.6 Ligand geometry ⓘ

6 ligands are modelled in this entry.

In the following table, the Counts columns list the number of bonds (or angles) for which Mogul statistics could be retrieved, the number of bonds (or angles) that are observed in the model and the number of bonds (or angles) that are defined in the chemical component dictionary. The Link column lists molecule types, if any, to which the group is linked. The Z score for a bond length (or angle) is the number of standard deviations the observed value is removed from the expected value. A bond length (or angle) with $|Z| > 2$ is considered an outlier worth inspection. RMSZ is the root-mean-square of all Z scores of the bond lengths (or angles).

Mol	Type	Chain	Res	Link	Bond lengths			Bond angles		
					Counts	RMSZ	$\# Z > 2$	Counts	RMSZ	$\# Z > 2$
2	NAG	A	301	1	12,14,15	0.73	1 (8%)	15,19,21	0.86	1 (6%)
3	OJ0	A	302	-	33,33,33	5.39	26 (78%)	48,50,50	3.59	21 (43%)
3	OJ0	B	300	-	33,33,33	5.35	26 (78%)	48,50,50	3.60	18 (37%)
3	OJ0	C	300	-	33,33,33	5.29	26 (78%)	48,50,50	3.62	24 (50%)
3	OJ0	D	300	-	33,33,33	5.32	26 (78%)	48,50,50	3.47	22 (45%)
3	OJ0	E	306	-	33,33,33	5.21	25 (75%)	48,50,50	3.65	19 (39%)

In the following table, the Chirals column lists the number of chiral outliers, the number of chiral centers analysed, the number of these observed in the model and the number defined in the chemical component dictionary. Similar counts are reported in the Torsion and Rings columns. '-' means no outliers of that kind were identified.

Mol	Type	Chain	Res	Link	Chirals	Torsions	Rings
2	NAG	A	301	1	-	0/6/23/26	0/1/1/1
3	OJ0	A	302	-	-	0/5/34/34	0/1/5/5
3	OJ0	B	300	-	-	0/5/34/34	0/1/5/5
3	OJ0	C	300	-	-	0/5/34/34	0/1/5/5
3	OJ0	D	300	-	-	0/5/34/34	0/1/5/5
3	OJ0	E	306	-	-	0/5/34/34	0/1/5/5

All (130) bond length outliers are listed below:

Mol	Chain	Res	Type	Atoms	Z	Observed(Å)	Ideal(Å)
3	D	300	OJ0	C13-C12	16.76	1.51	1.36

Continued on next page...

Continued from previous page...

Mol	Chain	Res	Type	Atoms	Z	Observed(Å)	Ideal(Å)
3	B	300	OJ0	C13-C12	16.33	1.50	1.36
3	C	300	OJ0	C13-C12	16.28	1.50	1.36
3	A	302	OJ0	C13-C12	15.99	1.50	1.36
3	E	306	OJ0	C13-C12	15.89	1.50	1.36
3	A	302	OJ0	C17-N22	-8.87	1.40	1.53
3	A	302	OJ0	C20-N22	-8.68	1.40	1.53
3	B	300	OJ0	C20-N22	-8.64	1.40	1.53
3	C	300	OJ0	C17-N22	-8.54	1.40	1.53
3	D	300	OJ0	C17-N22	-8.37	1.40	1.53
3	E	306	OJ0	C17-N22	-8.24	1.41	1.53
3	D	300	OJ0	C20-N22	-8.12	1.41	1.53
3	C	300	OJ0	C03-N02	8.08	1.47	1.37
3	E	306	OJ0	C03-N02	7.97	1.47	1.37
3	B	300	OJ0	C17-N22	-7.93	1.41	1.53
3	C	300	OJ0	C20-N22	-7.87	1.41	1.53
3	D	300	OJ0	C03-N02	7.83	1.47	1.37
3	A	302	OJ0	C03-N02	7.78	1.47	1.37
3	B	300	OJ0	C03-N02	7.61	1.46	1.37
3	E	306	OJ0	C20-N22	-7.58	1.42	1.53
3	B	300	OJ0	C05-C04	7.47	1.53	1.36
3	A	302	OJ0	C05-C04	7.34	1.53	1.36
3	D	300	OJ0	C05-C04	7.16	1.53	1.36
3	C	300	OJ0	C05-C04	7.04	1.52	1.36
3	E	306	OJ0	C05-C04	6.97	1.52	1.36
3	A	302	OJ0	C13-N14	6.85	1.47	1.35
3	C	300	OJ0	C13-N14	6.75	1.46	1.35
3	B	300	OJ0	C13-N14	6.71	1.46	1.35
3	A	302	OJ0	C19-C20	-6.69	1.42	1.53
3	D	300	OJ0	C13-N14	6.67	1.46	1.35
3	E	306	OJ0	C13-N14	6.54	1.46	1.35
3	E	306	OJ0	C19-C20	-6.42	1.43	1.53
3	B	300	OJ0	C19-C20	-6.31	1.43	1.53
3	C	300	OJ0	C19-C20	-6.30	1.43	1.53
3	D	300	OJ0	C19-C20	-6.25	1.43	1.53
3	A	302	OJ0	C06-C07	5.94	1.50	1.36
3	B	300	OJ0	C06-C07	5.92	1.50	1.36
3	E	306	OJ0	C06-C07	5.83	1.50	1.36
3	D	300	OJ0	C06-C07	5.76	1.49	1.36
3	C	300	OJ0	C06-C07	5.58	1.49	1.36
3	A	302	OJ0	C18-C17	-5.51	1.44	1.53
3	B	300	OJ0	C18-C17	-5.47	1.44	1.53
3	B	300	OJ0	C12-N26	5.43	1.43	1.34

Continued on next page...

Continued from previous page...

Mol	Chain	Res	Type	Atoms	Z	Observed(Å)	Ideal(Å)
3	D	300	OJ0	C18-C17	-5.39	1.44	1.53
3	C	300	OJ0	C18-C17	-5.33	1.44	1.53
3	E	306	OJ0	C18-C17	-5.29	1.44	1.53
3	A	302	OJ0	C12-N26	5.20	1.43	1.34
3	A	302	OJ0	C18-C19	-5.20	1.38	1.54
3	A	302	OJ0	C16-C17	-5.17	1.46	1.53
3	D	300	OJ0	C18-C19	-5.14	1.39	1.54
3	E	306	OJ0	C18-C19	-5.12	1.39	1.54
3	C	300	OJ0	C18-C19	-5.09	1.39	1.54
3	C	300	OJ0	C12-N26	5.09	1.43	1.34
3	B	300	OJ0	C07-C08	5.03	1.52	1.42
3	C	300	OJ0	C27-C09	4.95	1.47	1.37
3	E	306	OJ0	C12-N26	4.94	1.42	1.34
3	E	306	OJ0	C16-C17	-4.84	1.47	1.53
3	B	300	OJ0	C27-C28	4.83	1.53	1.40
3	E	306	OJ0	C07-C08	4.80	1.52	1.42
3	B	300	OJ0	C18-C19	-4.80	1.40	1.54
3	A	302	OJ0	C07-C08	4.80	1.52	1.42
3	D	300	OJ0	C12-N26	4.79	1.42	1.34
3	E	306	OJ0	C27-C09	4.78	1.47	1.37
3	C	300	OJ0	C27-C28	4.73	1.52	1.40
3	B	300	OJ0	C27-C09	4.72	1.47	1.37
3	D	300	OJ0	C07-C08	4.70	1.52	1.42
3	A	302	OJ0	C27-C09	4.66	1.46	1.37
3	C	300	OJ0	C07-C08	4.63	1.51	1.42
3	D	300	OJ0	C27-C09	4.59	1.46	1.37
3	A	302	OJ0	C27-C28	4.56	1.52	1.40
3	B	300	OJ0	C08-C03	4.51	1.50	1.42
3	A	302	OJ0	C08-C03	4.48	1.50	1.42
3	E	306	OJ0	C27-C28	4.48	1.52	1.40
3	D	300	OJ0	C16-C17	-4.47	1.47	1.53
3	C	300	OJ0	C08-C03	4.46	1.50	1.42
3	D	300	OJ0	C21-C20	-4.39	1.47	1.53
3	D	300	OJ0	C27-C28	4.35	1.51	1.40
3	E	306	OJ0	C08-C03	4.33	1.50	1.42
3	B	300	OJ0	C16-C17	-4.25	1.48	1.53
3	B	300	OJ0	C05-C06	4.22	1.50	1.37
3	D	300	OJ0	C08-C03	4.18	1.50	1.42
3	B	300	OJ0	N26-N25	4.18	1.39	1.34
3	A	302	OJ0	N26-N25	4.11	1.39	1.34
3	C	300	OJ0	C16-C17	-4.08	1.48	1.53
3	C	300	OJ0	C21-C20	-4.07	1.48	1.53

Continued on next page...

Continued from previous page...

Mol	Chain	Res	Type	Atoms	Z	Observed(Å)	Ideal(Å)
3	A	302	OJ0	C05-C06	4.05	1.49	1.37
3	C	300	OJ0	N26-N25	3.99	1.39	1.34
3	C	300	OJ0	C05-C06	3.97	1.49	1.37
3	D	300	OJ0	C05-C06	3.95	1.49	1.37
3	E	306	OJ0	C05-C06	3.93	1.49	1.37
3	E	306	OJ0	N26-N25	3.88	1.39	1.34
3	B	300	OJ0	C28-N02	3.87	1.46	1.35
3	D	300	OJ0	N26-N25	3.84	1.39	1.34
3	C	300	OJ0	C28-N02	3.83	1.46	1.35
3	B	300	OJ0	C21-C20	-3.82	1.48	1.53
3	B	300	OJ0	C04-C03	3.80	1.49	1.41
3	E	306	OJ0	C28-N02	3.79	1.46	1.35
3	A	302	OJ0	C04-C03	3.79	1.49	1.41
3	A	302	OJ0	C21-C20	-3.68	1.48	1.53
3	D	300	OJ0	C04-C03	3.68	1.48	1.41
3	D	300	OJ0	C28-N02	3.60	1.45	1.35
3	E	306	OJ0	C04-C03	3.57	1.48	1.41
3	A	302	OJ0	C28-N02	3.52	1.45	1.35
3	C	300	OJ0	C04-C03	3.44	1.48	1.41
3	E	306	OJ0	C21-C20	-3.41	1.49	1.53
3	C	300	OJ0	C16-C15	2.94	1.58	1.53
3	A	302	OJ0	C16-C15	2.94	1.58	1.53
3	D	300	OJ0	C16-C15	2.84	1.58	1.53
3	B	300	OJ0	C16-C15	2.82	1.58	1.53
3	E	306	OJ0	C16-C15	2.73	1.58	1.53
3	E	306	OJ0	C09-C08	2.66	1.50	1.42
3	A	302	OJ0	C09-C08	2.54	1.50	1.42
3	C	300	OJ0	C09-C08	2.51	1.50	1.42
3	A	302	OJ0	C23-N22	-2.51	1.46	1.51
3	B	300	OJ0	C24-N22	-2.51	1.46	1.51
3	D	300	OJ0	C09-C08	2.49	1.50	1.42
3	B	300	OJ0	C09-C08	2.47	1.50	1.42
3	B	300	OJ0	C23-N22	-2.42	1.46	1.51
3	A	302	OJ0	C01-N02	-2.38	1.42	1.48
3	D	300	OJ0	C23-N22	-2.37	1.46	1.51
3	A	302	OJ0	C24-N22	-2.35	1.46	1.51
3	D	300	OJ0	C01-N02	-2.27	1.42	1.48
3	B	300	OJ0	C01-N02	-2.17	1.43	1.48
3	E	306	OJ0	C01-N02	-2.16	1.43	1.48
3	C	300	OJ0	C01-N02	-2.16	1.43	1.48
2	A	301	NAG	O5-C5	-2.15	1.41	1.45
3	D	300	OJ0	C24-N22	-2.14	1.47	1.51

Continued on next page...

Continued from previous page...

Mol	Chain	Res	Type	Atoms	Z	Observed(Å)	Ideal(Å)
3	C	300	OJ0	C24-N22	-2.10	1.47	1.51
3	E	306	OJ0	C23-N22	-2.06	1.47	1.51
3	C	300	OJ0	C23-N22	-2.02	1.47	1.51

All (105) bond angle outliers are listed below:

Mol	Chain	Res	Type	Atoms	Z	Observed(°)	Ideal(°)
3	E	306	OJ0	N26-N25-N14	13.12	113.50	107.31
3	C	300	OJ0	N26-N25-N14	12.70	113.30	107.31
3	B	300	OJ0	N26-N25-N14	12.46	113.19	107.31
3	D	300	OJ0	N26-N25-N14	12.40	113.16	107.31
3	A	302	OJ0	N26-N25-N14	11.39	112.69	107.31
3	C	300	OJ0	C18-C17-N22	-9.84	94.36	102.17
3	A	302	OJ0	C19-C20-N22	-9.42	94.70	102.17
3	E	306	OJ0	C15-N14-N25	9.41	130.45	121.52
3	B	300	OJ0	C18-C17-N22	-9.40	94.72	102.17
3	B	300	OJ0	C15-N14-N25	9.36	130.41	121.52
3	A	302	OJ0	C15-N14-N25	9.05	130.11	121.52
3	B	300	OJ0	C19-C20-N22	-8.92	95.10	102.17
3	D	300	OJ0	C18-C17-N22	-8.85	95.15	102.17
3	C	300	OJ0	C15-N14-N25	8.63	129.71	121.52
3	A	302	OJ0	C18-C17-N22	-8.57	95.38	102.17
3	E	306	OJ0	C19-C20-N22	-8.23	95.65	102.17
3	E	306	OJ0	C18-C17-N22	-7.97	95.85	102.17
3	C	300	OJ0	C19-C20-N22	-7.71	96.05	102.17
3	D	300	OJ0	C15-N14-N25	7.58	128.72	121.52
3	D	300	OJ0	C19-C20-N22	-7.31	96.37	102.17
3	D	300	OJ0	C11-O10-C09	6.89	127.73	117.58
3	E	306	OJ0	C11-O10-C09	6.83	127.65	117.58
3	C	300	OJ0	C11-O10-C09	6.69	127.45	117.58
3	A	302	OJ0	C11-O10-C09	6.14	126.64	117.58
3	B	300	OJ0	C20-N22-C17	5.83	111.28	101.18
3	A	302	OJ0	C20-N22-C17	5.82	111.27	101.18
3	B	300	OJ0	C16-C17-C18	-5.31	106.97	112.45
3	D	300	OJ0	C20-N22-C17	5.21	110.22	101.18
3	E	306	OJ0	C16-C17-C18	-5.07	107.21	112.45
3	B	300	OJ0	C16-C17-N22	4.93	113.39	108.95
3	C	300	OJ0	C20-N22-C17	4.80	109.51	101.18
3	E	306	OJ0	C20-N22-C17	4.78	109.47	101.18
3	A	302	OJ0	C27-C09-C08	-4.53	118.50	121.65
3	C	300	OJ0	C27-C09-C08	-4.38	118.61	121.65
3	B	300	OJ0	C27-C09-C08	-4.35	118.63	121.65

Continued on next page...

Continued from previous page...

Mol	Chain	Res	Type	Atoms	Z	Observed(°)	Ideal(°)
3	A	302	OJ0	C16-C17-C18	-4.24	108.07	112.45
3	D	300	OJ0	C16-C17-C18	-4.23	108.08	112.45
3	A	302	OJ0	C13-N14-C15	-4.15	121.10	125.58
3	E	306	OJ0	C27-C09-C08	-4.10	118.80	121.65
3	E	306	OJ0	O10-C09-C08	3.72	125.67	114.92
3	E	306	OJ0	C21-C20-N22	3.72	112.30	108.95
3	B	300	OJ0	C13-N14-C15	-3.63	121.67	125.58
3	E	306	OJ0	C13-N14-C15	-3.62	121.67	125.58
3	D	300	OJ0	C27-C09-C08	-3.60	119.15	121.65
3	A	302	OJ0	O10-C09-C08	3.55	125.15	114.92
3	B	300	OJ0	C18-C19-C20	3.50	109.25	104.30
3	E	306	OJ0	C19-C18-C17	3.46	109.20	104.30
3	D	300	OJ0	O10-C09-C08	3.46	124.91	114.92
3	C	300	OJ0	C16-C17-N22	3.36	111.97	108.95
3	C	300	OJ0	C04-C03-N02	-3.32	118.44	121.71
3	D	300	OJ0	C18-C19-C20	3.29	108.96	104.30
3	C	300	OJ0	O10-C09-C08	3.28	124.38	114.92
3	E	306	OJ0	C04-C03-N02	-3.27	118.49	121.71
3	A	302	OJ0	C04-C03-N02	-3.22	118.54	121.71
3	C	300	OJ0	C18-C19-C20	3.21	108.83	104.30
3	A	302	OJ0	C19-C18-C17	3.17	108.78	104.30
3	C	300	OJ0	C13-N14-C15	-3.16	122.17	125.58
3	C	300	OJ0	C21-C20-C19	-3.14	109.21	112.45
3	C	300	OJ0	C16-C15-N14	3.12	114.42	110.92
3	A	302	OJ0	C18-C19-C20	3.11	108.70	104.30
3	D	300	OJ0	C20-C21-C15	-3.11	109.86	114.67
3	C	300	OJ0	C16-C17-C18	-3.07	109.28	112.45
3	C	300	OJ0	C21-C20-N22	3.06	111.70	108.95
3	A	302	OJ0	C13-C12-N26	-2.98	105.41	110.80
3	D	300	OJ0	C16-C17-N22	2.95	111.60	108.95
3	B	300	OJ0	C13-C12-N26	-2.93	105.49	110.80
3	D	300	OJ0	C16-C15-N14	2.93	114.20	110.92
3	E	306	OJ0	C16-C17-N22	2.92	111.58	108.95
3	A	302	OJ0	C16-C17-N22	2.91	111.57	108.95
3	D	300	OJ0	C19-C18-C17	2.89	108.39	104.30
3	B	300	OJ0	C19-C18-C17	2.89	108.39	104.30
3	B	300	OJ0	C11-O10-C09	2.85	121.78	117.58
3	D	300	OJ0	C21-C20-C19	-2.78	109.58	112.45
3	B	300	OJ0	C24-N22-C20	-2.72	107.48	112.85
3	C	300	OJ0	C13-C12-N26	-2.70	105.91	110.80
3	B	300	OJ0	C04-C03-N02	-2.66	119.09	121.71
3	D	300	OJ0	C13-N14-C15	-2.62	122.76	125.58

Continued on next page...

Continued from previous page...

Mol	Chain	Res	Type	Atoms	Z	Observed(°)	Ideal(°)
3	E	306	OJ0	C13-C12-N26	-2.61	106.07	110.80
3	D	300	OJ0	C17-C16-C15	-2.60	110.65	114.67
3	E	306	OJ0	C21-C20-C19	-2.59	109.78	112.45
3	E	306	OJ0	O10-C09-C27	-2.57	115.53	124.68
3	E	306	OJ0	C18-C19-C20	2.57	107.94	104.30
3	D	300	OJ0	C04-C03-N02	-2.57	119.18	121.71
3	D	300	OJ0	C13-C12-N26	-2.57	106.15	110.80
3	C	300	OJ0	C19-C18-C17	2.57	107.93	104.30
3	B	300	OJ0	C28-N02-C03	-2.51	119.38	121.74
3	D	300	OJ0	O10-C09-C27	-2.46	115.93	124.68
3	A	302	OJ0	C21-C20-N22	2.38	111.09	108.95
2	A	301	NAG	O5-C5-C6	2.35	109.45	106.98
3	A	302	OJ0	O10-C09-C27	-2.34	116.34	124.68
3	C	300	OJ0	C08-C03-N02	2.27	121.47	119.54
3	C	300	OJ0	C20-C21-C15	-2.23	111.21	114.67
3	A	302	OJ0	C16-C15-C21	2.22	114.01	111.35
3	C	300	OJ0	C28-N02-C03	-2.20	119.68	121.74
3	B	300	OJ0	C16-C15-C21	2.17	113.96	111.35
3	D	300	OJ0	C01-N02-C03	2.17	121.00	119.07
3	C	300	OJ0	O10-C09-C27	-2.16	117.01	124.68
3	C	300	OJ0	C28-C27-C09	2.11	121.32	117.15
3	A	302	OJ0	C01-N02-C03	2.07	120.90	119.07
3	A	302	OJ0	C28-C27-C09	2.05	121.21	117.15
3	D	300	OJ0	C12-C13-N14	-2.05	104.38	107.13
3	B	300	OJ0	O10-C09-C08	2.04	120.82	114.92
3	E	306	OJ0	C28-C27-C09	2.04	121.17	117.15
3	A	302	OJ0	C28-N02-C03	-2.02	119.85	121.74
3	C	300	OJ0	C24-N22-C20	-2.01	108.88	112.85

There are no chirality outliers.

There are no torsion outliers.

There are no ring outliers.

5.7 Other polymers ⓘ

There are no such residues in this entry.

5.8 Polymer linkage issues

There are no chain breaks in this entry.

6 Fit of model and data ⓘ

6.1 Protein, DNA and RNA chains ⓘ

In the following table, the column labelled ‘#RSRZ> 2’ contains the number (and percentage) of RSRZ outliers, followed by percent RSRZ outliers for the chain as percentile scores relative to all X-ray entries and entries of similar resolution. The OWAB column contains the minimum, median, 95th percentile and maximum values of the occupancy-weighted average B-factor per residue. The column labelled ‘Q< 0.9’ lists the number of (and percentage) of residues with an average occupancy less than 0.9.

Mol	Chain	Analysed	<RSRZ>	#RSRZ>2	OWAB(Å ²)	Q<0.9
1	A	211/230 (91%)	0.14	11 (5%) 26 36	22, 36, 64, 93	0
1	B	209/230 (90%)	-0.03	5 (2%) 56 66	23, 38, 61, 105	0
1	C	206/230 (89%)	0.02	7 (3%) 43 53	25, 36, 73, 91	0
1	D	213/230 (92%)	0.04	6 (2%) 50 60	23, 38, 64, 76	0
1	E	209/230 (90%)	-0.20	4 (1%) 64 73	23, 37, 59, 80	0
All	All	1048/1150 (91%)	-0.01	33 (3%) 47 56	22, 37, 66, 105	0

All (33) RSRZ outliers are listed below:

Mol	Chain	Res	Type	RSRZ
1	A	17	SER	6.2
1	E	19	MET	4.2
1	C	0	LEU	4.1
1	B	19	MET	4.1
1	A	16	ARG	4.1
1	D	13	LEU	3.8
1	B	18	PRO	3.7
1	A	18	PRO	3.7
1	A	19	MET	3.6
1	A	0	LEU	3.5
1	A	14	PHE	3.5
1	B	0	LEU	3.5
1	E	17	SER	3.4
1	C	29	LEU	3.2
1	C	14	PHE	3.1
1	A	-2	ASP	3.0
1	C	6	LEU	2.8
1	A	15	ASN	2.8
1	D	72	TYR	2.7
1	C	55	TYR	2.7

Continued on next page...

Continued from previous page...

Mol	Chain	Res	Type	RSRZ
1	D	71	GLU	2.6
1	B	16	ARG	2.6
1	E	16	ARG	2.6
1	E	21	PRO	2.5
1	A	6	LEU	2.5
1	D	191	CYS	2.3
1	B	7	MET	2.2
1	C	-1	LYS	2.2
1	C	1	HIS	2.1
1	A	1	HIS	2.1
1	A	71	GLU	2.1
1	D	14	PHE	2.1
1	D	26	ASP	2.0

6.2 Non-standard residues in protein, DNA, RNA chains ⓘ

There are no non-standard protein/DNA/RNA residues in this entry.

6.3 Carbohydrates ⓘ

In the following table, the Atoms column lists the number of modelled atoms in the group and the number defined in the chemical component dictionary. LLDF column lists the quality of electron density of the group with respect to its neighbouring residues in protein, DNA or RNA chains. The B-factors column lists the minimum, median, 95th percentile and maximum values of B factors of atoms in the group. The column labelled 'Q < 0.9' lists the number of atoms with occupancy less than 0.9.

Mol	Type	Chain	Res	Atoms	RSR	LLDF	B-factors(Å ²)	Q<0.9
4	NAG	E	301	14/15	0.17	10.00	60,73,79,81	0
4	MAN	E	304	11/12	0.25	0.73	54,63,69,69	0
4	BMA	E	303	11/12	0.14	-0.59	62,69,76,87	0
4	MAN	E	305	11/12	0.37	-	74,92,98,98	0
4	NAG	E	302	14/15	0.17	-	70,76,79,80	0

6.4 Ligands ⓘ

In the following table, the Atoms column lists the number of modelled atoms in the group and the number defined in the chemical component dictionary. LLDF column lists the quality of electron density of the group with respect to its neighbouring residues in protein, DNA or RNA chains. The B-factors column lists the minimum, median, 95th percentile and maximum values of B factors of atoms in the group. The column labelled 'Q < 0.9' lists the number of atoms with occupancy

less than 0.9.

Mol	Type	Chain	Res	Atoms	RSR	LLDF	B-factors(\AA^2)	Q<0.9
3	OJ0	E	306	29/29	0.28	6.76	42,55,72,76	0
3	OJ0	A	302	29/29	0.28	3.80	44,50,56,59	18
3	OJ0	C	300	29/29	0.23	3.36	39,48,65,67	0
3	OJ0	B	300	29/29	0.20	2.53	39,58,91,99	19
2	NAG	A	301	14/15	0.29	2.39	77,81,88,94	0
3	OJ0	D	300	29/29	0.23	2.05	36,50,67,73	0

6.5 Other polymers ⓘ

There are no such residues in this entry.