



Full wwPDB X-ray Structure Validation Report ⓘ

Feb 27, 2014 – 01:03 AM GMT

PDB ID : 1DJ9
Title : CRYSTAL STRUCTURE OF 8-AMINO-7-OXONANOATE SYNTHASE (OR 7-KETO-8AMINPELARGONATE OR KAPA SYNTHASE) COMPLEXED WITH PLP AND THE PRODUCT 8(S)-AMINO-7-OXONANONOATE (OR KAPA). THE ENZYME OF BIOTIN BIOSYNTHETIC PATHWAY.
Authors : Webster, S.P.; Alexeev, D.; Campopiano, D.J.; Watt, R.M.; Alexeeva, M.; Sawyer, L.; Baxter, R.L.
Deposited on : 1999-12-02
Resolution : 2.00 Å (reported)

This is a full wwPDB validation report for a publicly released PDB entry.
We welcome your comments at validation@mail.wwpdb.org
A user guide is available at <http://wwpdb.org/ValidationPDFNotes.html>

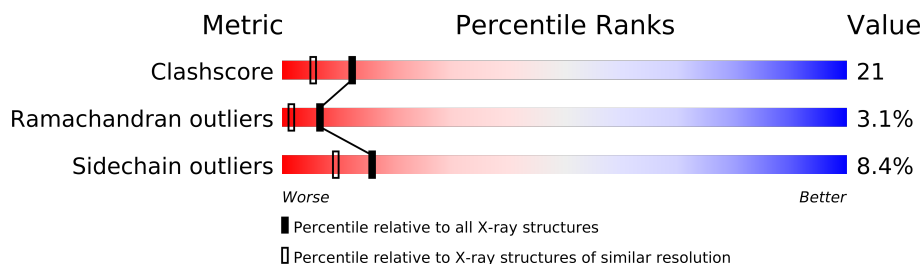
The following versions of software and data (see [references](#)) were used in the production of this report:

MolProbity : 4.02b-467
Mogul : 1.15 2013
Xtriage (Phenix) : **NOT EXECUTED**
EDS : **NOT EXECUTED**
Percentile statistics : 21963
Ideal geometry (proteins) : Engh & Huber (2001)
Ideal geometry (DNA, RNA) : Parkinson et. al. (1996)
Validation Pipeline (wwPDB-VP) : stable22683

1 Overall quality at a glance

The reported resolution of this entry is 2.00 Å.


Percentile scores (ranging between 0-100) for global validation metrics of the entry are shown in the following graphic. The table shows the number of entries on which the scores are based.



Metric	Whole archive (#Entries)	Similar resolution (#Entries, resolution range(Å))
Clashscore	79885	6188 (2.00-2.00)
Ramachandran outliers	78287	6102 (2.00-2.00)
Sidechain outliers	78261	6100 (2.00-2.00)

The table below summarises the geometric issues observed across the polymeric chains and their fit to the electron density. The red, orange, yellow and green segments on the lower bar indicate the fraction of residues that contain outliers for ≥ 3 , 2, 1 and 0 types of geometric quality criteria. The upper red bar (where present) indicates the fraction of residues that have poor fit to the electron density.

Note EDS was not executed.

Mol	Chain	Length	Quality of chain
1	A	384	

2 Entry composition i

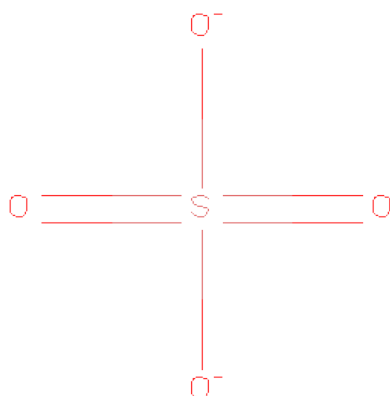
There are 5 unique types of molecules in this entry. The entry contains 3288 atoms, of which 0 are hydrogen and 0 are deuterium.

In the tables below, the ZeroOcc column contains the number of atoms modelled with zero occupancy, the AltConf column contains the number of residues with at least one atom in alternate conformation and the Trace column contains the number of residues modelled with at most 2 atoms.

- Molecule 1 is a protein called 8-AMINO-7-OXONONANOATESYNTASE.

Mol	Chain	Residues	Atoms					ZeroOcc	AltConf	Trace
1	A	383	Total	C	N	O	S	0	0	0
			2912	1821	537	542	12			

- Molecule 2 is SULFATE ION (three-letter code: SO₄) (formula: O₄S).

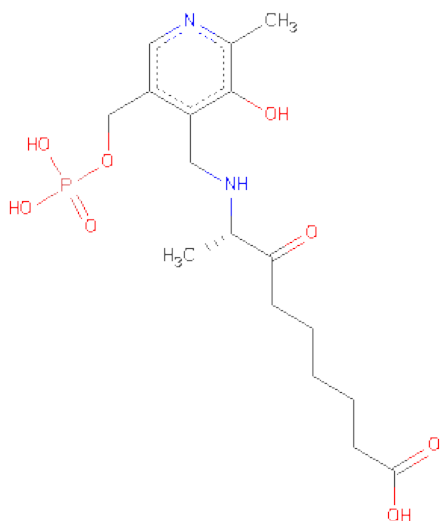


Mol	Chain	Residues	Atoms			ZeroOcc	AltConf
2	A	1	Total	O	S	0	0
			5	4	1		
2	A	1	Total	O	S	0	0
			5	4	1		

- Molecule 3 is MAGNESIUM ION (three-letter code: MG) (formula: Mg).

Mol	Chain	Residues	Atoms		ZeroOcc	AltConf
3	A	1	Total	Mg	0	0
			1	1		

- Molecule 4 is N-[7-KETO-8-AMINOPELARGONICACID]-[3-HYDROXY-2-METHYL-5-PHOSPHONOOXYMETHYL-PYRIDIN-4-YL-METHANE] (three-letter code: KAM) (formula: C₁₇H₂₇N₂O₈P).



Mol	Chain	Residues	Atoms					ZeroOcc	AltConf
			Total	C	N	O	P		
4	A	1	28	17	2	8	1	0	0

- Molecule 5 is water.

Mol	Chain	Residues	Atoms		ZeroOcc	AltConf
5	A	337	Total	O	0	0
			337	337		

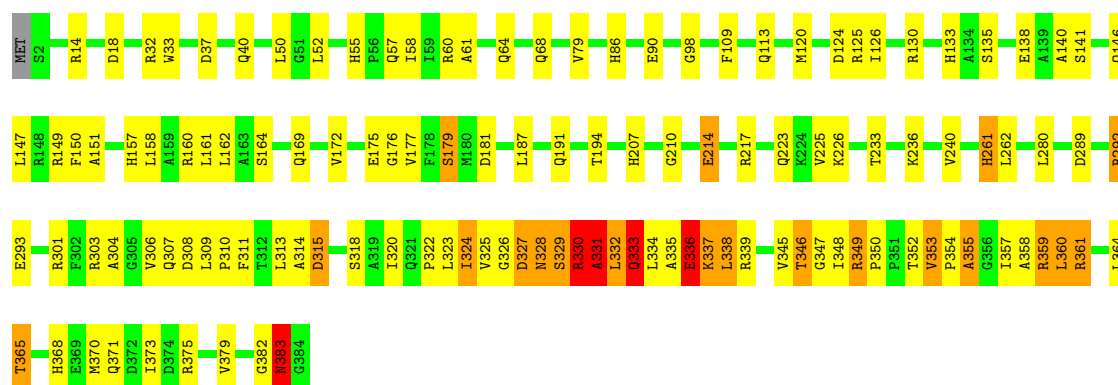
3 Residue-property plots

These plots are drawn for all protein, RNA and DNA chains in the entry. The first graphic for a chain summarises the proportions of errors displayed in the second graphic. The second graphic shows the sequence view annotated by issues in geometry and electron density. Residues are color-coded according to the number of geometric quality criteria for which they contain at least one outlier: green = 0, yellow = 1, orange = 2 and red = 3 or more. A red dot above a residue indicates a poor fit to the electron density ($RSRZ > 2$). Stretches of 2 or more consecutive residues without any outlier are shown as a green connector. Residues present in the sample, but not in the model, are shown in grey.

Note EDS was not executed.

• Molecule 1: 8-AMINO-7-OXONONANOATESYNTASE

Chain A: 



4 Data and refinement statistics

Xtriage (Phenix) and EDS were not executed - this section will therefore be incomplete.

Property	Value	Source
Space group	P 31 1 2	Depositor
Cell constants a, b, c, α , β , γ	58.89Å 58.89Å 201.77Å 90.00° 90.00° 120.00°	Depositor
Resolution (Å)	10.00 – 2.00	Depositor
% Data completeness (in resolution range)	99.5 (10.00-2.00)	Depositor
R_{merge}	0.07	Depositor
R_{sym}	(Not available)	Depositor
Refinement program	SHELXL-97	Depositor
R, R_{free}	0.212 , 0.278	Depositor
Estimated twinning fraction	No twinning to report.	Xtriage
Total number of atoms	3288	wwPDB-VP
Average B, all atoms (Å ²)	34.0	wwPDB-VP

5 Model quality

5.1 Standard geometry

Bond lengths and bond angles in the following residue types are not validated in this section: MG, SO4, KAM

The Z score for a bond length (or angle) is the number of standard deviations the observed value is removed from the expected value. A bond length (or angle) with $|Z| > 5$ is considered an outlier worth inspection. RMSZ is the root-mean-square of all Z scores of the bond lengths (or angles).

Mol	Chain	Bond lengths		Bond angles	
		RMSZ	$\# Z > 5$	RMSZ	$\# Z > 5$
1	A	0.38	0/2969	1.13	10/4026 (0.2%)

Chiral center outliers are detected by calculating the chiral volume of a chiral center and verifying if the center is modelled as a planar moiety or with the opposite hand. A planarity outlier is detected by checking planarity of atoms in a peptide group, atoms in a mainchain group or atoms of a sidechain that are expected to be planar.

Mol	Chain	#Chirality outliers	#Planarity outliers
1	A	0	1

There are no bond length outliers.

All (10) bond angle outliers are listed below:

Mol	Chain	Res	Type	Atoms	Z	Observed(°)	Ideal(°)
1	A	332	LEU	C-N-CA	12.49	152.94	121.70
1	A	292	ARG	NE-CZ-NH1	-9.94	115.33	120.30
1	A	292	ARG	CD-NE-CZ	-8.43	111.80	123.60
1	A	292	ARG	NE-CZ-NH2	8.31	124.45	120.30
1	A	333	GLN	C-N-CA	7.82	141.26	121.70
1	A	130	ARG	NE-CZ-NH1	6.11	123.36	120.30
1	A	375	ARG	CD-NE-CZ	5.61	131.45	123.60
1	A	331	ALA	N-CA-C	-5.34	96.57	111.00
1	A	361	ARG	NE-CZ-NH2	5.25	122.93	120.30
1	A	261	HIS	CA-CB-CG	5.25	122.52	113.60

There are no chirality outliers.

All (1) planarity outliers are listed below:

Mol	Chain	Res	Type	Group
1	A	336	GLU	Sidechain

5.2 Close contacts ⓘ

In the following table, the Non-H and H(model) columns list the number of non-hydrogen atoms and hydrogen atoms in the chain respectively. The H(added) column lists the number of hydrogens added by MolProbity. The Clashes column lists the number of clashes within the asymmetric unit, and the number in parentheses is this value normalized per 1000 atoms of the molecule in the chain. The Symm-Clashes column gives symmetry related clashes, in the same way as for the Clashes column.

Mol	Chain	Non-H	H(model)	H(added)	Clashes	Symm-Clashes
1	A	2912	0	2882	124	0
2	A	10	0	0	1	0
3	A	1	0	0	0	0
4	A	28	0	22	1	0
5	A	337	0	0	18	0
All	All	3288	0	2904	124	0

Clashscore is defined as the number of clashes calculated for the entry per 1000 atoms (including hydrogens) of the entry. The overall clashscore for this entry is 21.

All (124) close contacts within the same asymmetric unit are listed below.

Atom-1	Atom-2	Distance(Å)	Clash(Å)
1:A:328:ASN:HD21	1:A:332:LEU:C	1.20	1.42
1:A:328:ASN:O	1:A:330:ARG:N	1.72	1.23
1:A:328:ASN:ND2	1:A:332:LEU:C	1.96	1.19
1:A:328:ASN:ND2	1:A:332:LEU:O	1.93	1.00
1:A:348:ILE:HG23	1:A:359:ARG:HG3	1.48	0.95
1:A:330:ARG:O	1:A:330:ARG:HG3	1.75	0.86
1:A:332:LEU:HD13	5:A:1142:HOH:O	1.85	0.76
1:A:328:ASN:HD21	1:A:333:GLN:N	1.82	0.76
1:A:357:ILE:O	1:A:359:ARG:HG2	1.85	0.75
1:A:151:ALA:H	1:A:157:HIS:HD2	1.34	0.75
1:A:328:ASN:C	1:A:330:ARG:N	2.41	0.74
1:A:329:SER:O	1:A:331:ALA:N	2.22	0.73
1:A:179:SER:HB2	5:A:1046:HOH:O	1.88	0.72
1:A:349:ARG:HG3	5:A:1161:HOH:O	1.89	0.72
1:A:328:ASN:ND2	1:A:333:GLN:N	2.36	0.71
1:A:348:ILE:HD11	1:A:352:THR:HB	1.72	0.71
1:A:126:ILE:HD12	5:A:1274:HOH:O	1.91	0.71
1:A:125:ARG:HE	1:A:146:GLN:NE2	1.91	0.69

Continued on next page...

Continued from previous page...

Atom-1	Atom-2	Distance(Å)	Clash(Å)
1:A:329:SER:O	1:A:330:ARG:C	2.30	0.68
1:A:354:PRO:HD2	1:A:357:ILE:HG21	1.76	0.68
1:A:187:LEU:HB2	1:A:223:GLN:OE1	1.93	0.68
1:A:328:ASN:HD21	1:A:332:LEU:CA	2.08	0.67
1:A:346:THR:O	1:A:360:LEU:HD12	1.95	0.67
1:A:333:GLN:HE21	1:A:337:LYS:HD3	1.60	0.66
1:A:324:ILE:HA	1:A:359:ARG:HB3	1.77	0.66
1:A:191:GLN:OE1	1:A:225:VAL:HG13	1.96	0.65
1:A:14:ARG:HD3	5:A:1275:HOH:O	1.96	0.64
1:A:306:VAL:HG12	1:A:313:LEU:HD22	1.79	0.63
1:A:354:PRO:HA	5:A:1307:HOH:O	1.98	0.63
1:A:140:ALA:HB1	1:A:147:LEU:HD13	1.80	0.63
1:A:333:GLN:HG2	1:A:334:LEU:HA	1.81	0.62
1:A:214:GLU:HG2	1:A:217:ARG:NH1	2.15	0.61
1:A:309:LEU:HD22	1:A:311:PHE:CE1	2.34	0.61
1:A:336:GLU:OE1	1:A:339:ARG:HD2	2.01	0.61
1:A:151:ALA:H	1:A:157:HIS:CD2	2.15	0.61
1:A:333:GLN:NE2	1:A:337:LYS:HD3	2.16	0.60
1:A:330:ARG:HD3	1:A:349:ARG:HB3	1.83	0.60
1:A:365:THR:HG23	1:A:368:HIS:ND1	2.16	0.60
1:A:109:PHE:O	1:A:113:GLN:HG3	2.00	0.60
1:A:309:LEU:HD23	1:A:310:PRO:HD2	1.84	0.59
1:A:332:LEU:HG	1:A:336:GLU:HB2	1.85	0.58
1:A:306:VAL:HG11	1:A:313:LEU:HD13	1.84	0.58
1:A:348:ILE:HD11	1:A:352:THR:CB	2.35	0.56
1:A:322:PRO:O	1:A:323:LEU:HD23	2.05	0.56
1:A:348:ILE:O	1:A:358:ALA:HA	2.06	0.55
1:A:353:VAL:HG22	1:A:354:PRO:HD2	1.88	0.55
1:A:289:ASP:HA	1:A:292:ARG:NH1	2.21	0.55
1:A:18:ASP:O	1:A:349:ARG:NH1	2.40	0.54
1:A:354:PRO:HD2	1:A:357:ILE:CG2	2.38	0.54
1:A:55:HIS:CE1	1:A:57:GLN:HB2	2.43	0.53
1:A:354:PRO:O	1:A:357:ILE:HD12	2.09	0.53
1:A:109:PHE:CD1	1:A:135:SER:HB3	2.43	0.53
1:A:325:VAL:O	1:A:325:VAL:HG12	2.08	0.53
1:A:348:ILE:HD11	1:A:352:THR:CG2	2.40	0.52
1:A:140:ALA:CB	1:A:147:LEU:HD13	2.40	0.52
1:A:309:LEU:CD2	1:A:310:PRO:HD2	2.41	0.51
1:A:214:GLU:HG2	1:A:217:ARG:HH12	1.74	0.51
1:A:61:ALA:HA	5:A:1215:HOH:O	2.10	0.51
1:A:120:MET:HG3	1:A:126:ILE:HD11	1.93	0.50
1:A:382:GLY:O	1:A:383:ASN:O	2.29	0.50

Continued on next page...

Continued from previous page...

Atom-1	Atom-2	Distance(Å)	Clash(Å)
1:A:364:LEU:HD22	1:A:373:ILE:CD1	2.42	0.49
1:A:338:LEU:HD12	1:A:379:VAL:CG1	2.43	0.49
1:A:353:VAL:HG22	1:A:357:ILE:HG22	1.95	0.49
1:A:292:ARG:HD2	1:A:292:ARG:HH11	1.29	0.49
1:A:347:GLY:HA2	1:A:359:ARG:O	2.13	0.48
1:A:353:VAL:CG2	1:A:357:ILE:HG22	2.43	0.48
1:A:120:MET:HE3	1:A:124:ASP:HB3	1.94	0.48
1:A:327:ASP:O	1:A:328:ASN:HB2	2.14	0.48
1:A:236:LYS:HZ3	4:A:400:KAM:H4A2	1.79	0.48
1:A:335:ALA:HA	1:A:345:VAL:CG2	2.44	0.48
1:A:330:ARG:O	1:A:330:ARG:CG	2.52	0.47
1:A:325:VAL:HG23	1:A:359:ARG:HA	1.96	0.47
1:A:120:MET:HB2	5:A:1095:HOH:O	2.13	0.47
1:A:333:GLN:HG3	1:A:337:LYS:HG2	1.97	0.47
1:A:336:GLU:OE1	1:A:336:GLU:HA	2.16	0.46
1:A:324:ILE:HG12	1:A:325:VAL:H	1.79	0.46
1:A:332:LEU:HD12	1:A:333:GLN:N	2.31	0.46
1:A:350:PRO:CD	1:A:353:VAL:HG12	2.46	0.46
1:A:292:ARG:NH1	5:A:1154:HOH:O	2.49	0.46
1:A:158:LEU:O	1:A:162:LEU:HG	2.16	0.46
1:A:348:ILE:O	1:A:359:ARG:N	2.49	0.46
1:A:133:HIS:N	1:A:175:GLU:OE2	2.49	0.46
1:A:318:SER:HB2	5:A:1133:HOH:O	2.15	0.45
1:A:313:LEU:O	1:A:315:ASP:N	2.49	0.45
1:A:217:ARG:HH11	1:A:217:ARG:HD2	1.60	0.45
1:A:325:VAL:HG23	1:A:358:ALA:O	2.17	0.45
1:A:303:ARG:NH1	5:A:1152:HOH:O	2.50	0.45
1:A:304:ALA:O	1:A:307:GLN:HG3	2.16	0.45
1:A:40:GLN:NE2	5:A:1269:HOH:O	2.50	0.45
1:A:354:PRO:HG2	1:A:357:ILE:HD12	1.99	0.45
1:A:98:GLY:O	1:A:226:LYS:HE3	2.17	0.45
1:A:68:GLN:NE2	5:A:1301:HOH:O	2.50	0.45
1:A:172:VAL:HG21	1:A:194:THR:OG1	2.17	0.45
1:A:361:ARG:HH11	1:A:361:ARG:HD3	1.62	0.45
1:A:50:LEU:HD11	1:A:210:GLY:O	2.18	0.44
1:A:160:ARG:NH1	5:A:1202:HOH:O	2.50	0.44
1:A:338:LEU:HD23	1:A:345:VAL:HG11	1.99	0.44
1:A:328:ASN:ND2	1:A:333:GLN:O	2.50	0.44
1:A:350:PRO:HG3	1:A:353:VAL:HG12	1.99	0.44
1:A:176:GLY:HA2	5:A:1124:HOH:O	2.17	0.44
1:A:332:LEU:HD11	1:A:336:GLU:N	2.20	0.43
1:A:86:HIS:O	1:A:90:GLU:HG3	2.18	0.43

Continued on next page...

Continued from previous page...

Atom-1	Atom-2	Distance(Å)	Clash(Å)
1:A:138:GLU:O	1:A:141:SER:HB3	2.19	0.42
1:A:177:VAL:HB	1:A:207:HIS:HB2	2.00	0.42
1:A:360:LEU:HD12	1:A:360:LEU:HA	1.81	0.42
1:A:303:ARG:HG2	1:A:313:LEU:HD11	2.01	0.42
1:A:32:ARG:HD3	1:A:33:TRP:NE1	2.34	0.42
1:A:149:ARG:HB2	2:A:401:SO4:O3	2.20	0.42
1:A:335:ALA:HA	1:A:345:VAL:HG21	2.01	0.42
1:A:354:PRO:O	1:A:355:ALA:HB3	2.19	0.42
1:A:313:LEU:HD12	5:A:1152:HOH:O	2.19	0.42
1:A:179:SER:O	1:A:320:ILE:HD13	2.20	0.41
1:A:326:GLY:O	1:A:327:ASP:HB2	2.20	0.41
1:A:332:LEU:HD21	1:A:336:GLU:CA	2.50	0.41
1:A:301:ARG:NE	1:A:370:MET:HB3	2.35	0.41
1:A:306:VAL:CG1	1:A:313:LEU:HD22	2.50	0.41
1:A:52:LEU:O	1:A:58:ILE:HD12	2.20	0.41
1:A:333:GLN:HE21	1:A:337:LYS:CD	2.30	0.41
1:A:333:GLN:HG3	1:A:337:LYS:CG	2.50	0.41
1:A:364:LEU:HD22	1:A:373:ILE:HD11	2.03	0.40
1:A:169:GLN:NE2	5:A:1039:HOH:O	2.54	0.40
1:A:333:GLN:HG3	1:A:337:LYS:CD	2.51	0.40
1:A:150:PHE:HB3	1:A:161:LEU:HD12	2.03	0.40
1:A:60:ARG:NH2	5:A:1314:HOH:O	2.50	0.40

There are no symmetry-related clashes.

5.3 Torsion angles

5.3.1 Protein backbone ⓘ

In the following table, the Percentiles column shows the percent Ramachandran outliers of the chain as a percentile score with respect to all X-ray entries followed by that with respect to entries of similar resolution. The Analysed column shows the number of residues for which the backbone conformation was analysed, and the total number of residues.

Mol	Chain	Analysed	Favoured	Allowed	Outliers	Percentiles
1	A	381/384 (99%)	352 (92%)	17 (4%)	12 (3%)	7 1

All (12) Ramachandran outliers are listed below:

Mol	Chain	Res	Type
1	A	314	ALA

Continued on next page...

Continued from previous page...

Mol	Chain	Res	Type
1	A	329	SER
1	A	383	ASN
1	A	315	ASP
1	A	328	ASN
1	A	330	ARG
1	A	331	ALA
1	A	333	GLN
1	A	355	ALA
1	A	79	VAL
1	A	240	VAL
1	A	327	ASP

5.3.2 Protein sidechains ⓘ

In the following table, the Percentiles column shows the percent sidechain outliers of the chain as a percentile score with respect to all X-ray entries followed by that with respect to entries of similar resolution. The Analysed column shows the number of residues for which the sidechain conformation was analysed, and the total number of residues.

Mol	Chain	Analysed	Rotameric	Outliers	Percentiles
1	A	297/298 (100%)	272 (92%)	25 (8%)	16 9

All (25) residues with a non-rotameric sidechain are listed below:

Mol	Chain	Res	Type
1	A	37	ASP
1	A	64	GLN
1	A	164	SER
1	A	179	SER
1	A	181	ASP
1	A	214	GLU
1	A	233	THR
1	A	261	HIS
1	A	262	LEU
1	A	280	LEU
1	A	293	GLU
1	A	308	ASP
1	A	324	ILE
1	A	330	ARG
1	A	336	GLU
1	A	337	LYS
1	A	338	LEU

Continued on next page...

Continued from previous page...

Mol	Chain	Res	Type
1	A	346	THR
1	A	349	ARG
1	A	353	VAL
1	A	359	ARG
1	A	360	LEU
1	A	365	THR
1	A	371	GLN
1	A	383	ASN

Some sidechains can be flipped to improve hydrogen bonding and reduce clashes. All (6) such sidechains are listed below:

Mol	Chain	Res	Type
1	A	68	GLN
1	A	146	GLN
1	A	169	GLN
1	A	328	ASN
1	A	333	GLN
1	A	371	GLN

5.3.3 RNA ⓘ

There are no RNA chains in this entry.

5.4 Non-standard residues in protein, DNA, RNA chains ⓘ

There are no non-standard protein/DNA/RNA residues in this entry.

5.5 Carbohydrates ⓘ

There are no carbohydrates in this entry.

5.6 Ligand geometry ⓘ

Of 4 ligands modelled in this entry, 1 is monoatomic - leaving 3 for Mogul analysis.

In the following table, the Counts columns list the number of bonds (or angles) for which Mogul statistics could be retrieved, the number of bonds (or angles) that are observed in the model and the number of bonds (or angles) that are defined in the chemical component dictionary. The Link column lists molecule types, if any, to which the group is linked. The Z score for a bond length

(or angle) is the number of standard deviations the observed value is removed from the expected value. A bond length (or angle) with $|Z| > 2$ is considered an outlier worth inspection. RMSZ is the root-mean-square of all Z scores of the bond lengths (or angles).

Mol	Type	Chain	Res	Link	Bond lengths			Bond angles		
					Counts	RMSZ	# Z > 2	Counts	RMSZ	# Z > 2
4	KAM	A	400	3	28,28,28	1.71	3 (10%)	38,38,38	1.77	9 (23%)
2	SO4	A	401	-	4,4,4	2.60	4 (100%)	6,6,6	0.06	0
2	SO4	A	402	-	4,4,4	2.61	4 (100%)	6,6,6	0.07	0

In the following table, the Chirals column lists the number of chiral outliers, the number of chiral centers analysed, the number of these observed in the model and the number defined in the chemical component dictionary. Similar counts are reported in the Torsion and Rings columns. '-' means no outliers of that kind were identified.

Mol	Type	Chain	Res	Link	Chirals	Torsions	Rings
4	KAM	A	400	3	-	0/23/23/23	0/1/1/1
2	SO4	A	401	-	-	0/0/0/0	0/0/0/0
2	SO4	A	402	-	-	0/0/0/0	0/0/0/0

All (11) bond length outliers are listed below:

Mol	Chain	Res	Type	Atoms	Z	Observed(Å)	Ideal(Å)
4	A	400	KAM	C4A-N9C	-6.28	1.28	1.46
4	A	400	KAM	C4A-C4	-3.65	1.47	1.51
2	A	402	SO4	O2-S	2.72	1.55	1.47
2	A	401	SO4	O2-S	2.71	1.55	1.47
4	A	400	KAM	O3-C3	-2.70	1.30	1.37
2	A	402	SO4	O1-S	2.64	1.55	1.47
2	A	401	SO4	O1-S	2.62	1.55	1.47
2	A	401	SO4	O4-S	2.56	1.56	1.47
2	A	402	SO4	O3-S	2.54	1.55	1.47
2	A	401	SO4	O3-S	2.52	1.55	1.47
2	A	402	SO4	O4-S	2.52	1.55	1.47

All (9) bond angle outliers are listed below:

Mol	Chain	Res	Type	Atoms	Z	Observed(°)	Ideal(°)
4	A	400	KAM	C6-N1-C2	4.94	129.85	119.28
4	A	400	KAM	C3-C2-N1	-4.14	114.99	120.66
4	A	400	KAM	OP4-C5A-C5	3.37	116.11	109.26
4	A	400	KAM	C4-C4A-N9C	3.36	121.06	111.67
4	A	400	KAM	C4A-C4-C3	-3.23	116.20	120.31
4	A	400	KAM	C4A-C4-C5	3.17	122.61	119.70

Continued on next page...

Continued from previous page...

Mol	Chain	Res	Type	Atoms	Z	Observed(°)	Ideal(°)
4	A	400	KAM	C5-C6-N1	-3.01	118.43	123.86
4	A	400	KAM	C2A-C2-C3	2.73	124.33	121.02
4	A	400	KAM	OP3-P-OP2	2.13	115.89	107.61

There are no chirality outliers.

There are no torsion outliers.

There are no ring outliers.

5.7 Other polymers ⓘ

There are no such residues in this entry.

5.8 Polymer linkage issues

There are no chain breaks in this entry.

6 Fit of model and data ⓘ

6.1 Protein, DNA and RNA chains ⓘ

EDS was not executed - this section will therefore be empty.

6.2 Non-standard residues in protein, DNA, RNA chains ⓘ

EDS was not executed - this section will therefore be empty.

6.3 Carbohydrates ⓘ

EDS was not executed - this section will therefore be empty.

6.4 Ligands ⓘ

EDS was not executed - this section will therefore be empty.

6.5 Other polymers ⓘ

EDS was not executed - this section will therefore be empty.