



Full wwPDB X-ray Structure Validation Report ⓘ

Feb 28, 2014 – 02:14 AM GMT

PDB ID : 1DM8
Title : BOVINE ENDOTHELIAL NITRIC OXIDE SYNTHASE HEME DOMAIN
COMPLEXED WITH 1,2,4-TRIAZOLE-CARBOXAMIDINE(H4B BOUND)
Authors : Raman, C.S.; Li, H.; Martasek, P.; Southan, G.J.; Masters, B.S.S.; Poulos,
T.L.
Deposited on : 1999-12-13
Resolution : 2.25 Å(reported)

This is a full wwPDB validation report for a publicly released PDB entry.
We welcome your comments at validation@mail.wwpdb.org
A user guide is available at <http://wwpdb.org/ValidationPDFNotes.html>

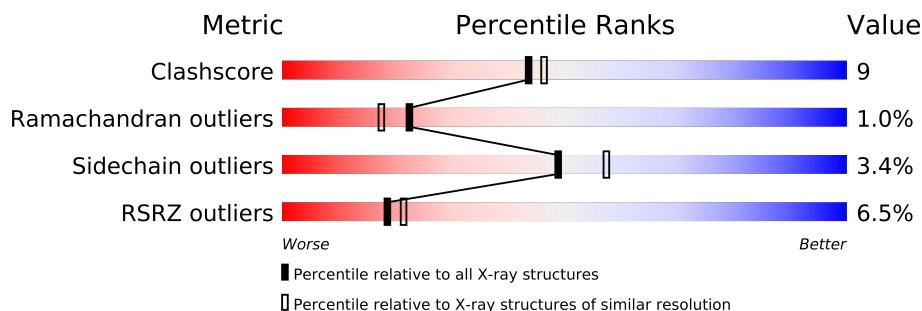
The following versions of software and data (see [references](#)) were used in the production of this report:

MolProbity : 4.02b-467
Mogul : 1.15 2013
Xtriage (Phenix) : dev-1323
EDS : stable22639
Percentile statistics : 21963
Refmac : 5.8.0049
CCP4 : 6.3.0 (Settle)
Ideal geometry (proteins) : Engh & Huber (2001)
Ideal geometry (DNA, RNA) : Parkinson et. al. (1996)
Validation Pipeline (wwPDB-VP) : stable22683

1 Overall quality at a glance

The reported resolution of this entry is 2.25 Å.

Percentile scores (ranging between 0-100) for global validation metrics of the entry are shown in the following graphic. The table shows the number of entries on which the scores are based.



Metric	Whole archive (#Entries)	Similar resolution (#Entries, resolution range(Å))
Clashscore	79885	1326 (2.28-2.24)
Ramachandran outliers	78287	1291 (2.28-2.24)
Sidechain outliers	78261	1291 (2.28-2.24)
RSRZ outliers	66119	1110 (2.28-2.24)

The table below summarises the geometric issues observed across the polymeric chains and their fit to the electron density. The red, orange, yellow and green segments on the lower bar indicate the fraction of residues that contain outliers for ≥ 3 , 2, 1 and 0 types of geometric quality criteria. The upper red bar (where present) indicates the fraction of residues that have poor fit to the electron density.

Mol	Chain	Length	Quality of chain
1	A	444	
1	B	444	

The following table lists non-polymeric compounds that are outliers for geometric or electron-density-fit criteria:

Mol	Type	Chain	Res	Geometry	Electron density
2	ACT	B	2860	-	X
7	TZC	A	1790	X	-
7	TZC	B	2790	X	-
8	GOL	A	1880	-	X

2 Entry composition i

There are 9 unique types of molecules in this entry. The entry contains 7024 atoms, of which 0 are hydrogen and 0 are deuterium.

In the tables below, the ZeroOcc column contains the number of atoms modelled with zero occupancy, the AltConf column contains the number of residues with at least one atom in alternate conformation and the Trace column contains the number of residues modelled with at most 2 atoms.

- Molecule 1 is a protein called NITRIC OXIDE SYNTHASE.

Mol	Chain	Residues	Atoms					ZeroOcc	AltConf	Trace
1	A	416	Total	C	N	O	S	0	0	0
			3302	2099	584	603	16			
1	B	414	Total	C	N	O	S	0	0	0
			3291	2092	582	601	16			

There are 2 discrepancies between the modelled and reference sequences:

Chain	Residue	Modelled	Actual	Comment	Reference
A	100	ARG	CYS	CONFLICT	UNP P29473
B	100	ARG	CYS	CONFLICT	UNP P29473

- Molecule 2 is ACETATE ION (three-letter code: ACT) (formula: C₂H₃O₂).



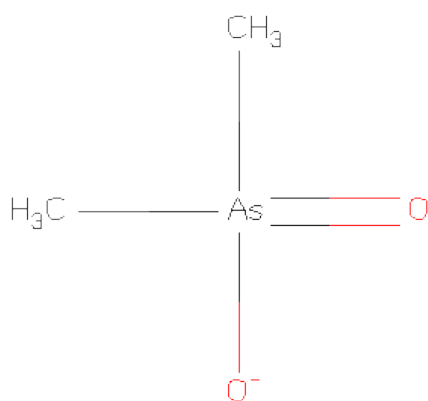
Mol	Chain	Residues	Atoms			ZeroOcc	AltConf
2	A	1	Total	C	O	0	0
			4	2	2		

Continued on next page...

Continued from previous page...

Mol	Chain	Residues	Atoms			ZeroOcc	AltConf
2	A	1	Total	C	O	0	0
			4	2	2		
2	B	1	Total	C	O	0	0
			4	2	2		
2	B	1	Total	C	O	0	0
			4	2	2		

- Molecule 3 is CACODYLATE ION (three-letter code: CAC) (formula: $C_2H_6AsO_2$).



Mol	Chain	Residues	Atoms			ZeroOcc	AltConf
3	A	1	Total	As	C	0	0
			3	1	2		
3	B	1	Total	As	C	0	0
			3	1	2		

- Molecule 4 is ZINC ION (three-letter code: ZN) (formula: Zn).

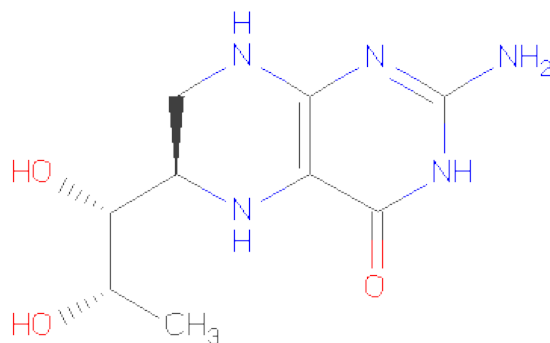
Mol	Chain	Residues	Atoms		ZeroOcc	AltConf
4	A	1	Total	Zn	0	0
			1	1		

- Molecule 5 is PROTOPORPHYRIN IX CONTAINING FE (three-letter code: HEM) (formula: $C_{34}H_{32}FeN_4O_4$).



Mol	Chain	Residues	Atoms					ZeroOcc	AltConf
5	A	1	Total	C	Fe	N	O	0	0
			43	34	1	4	4		
5	B	1	Total	C	Fe	N	O	0	0
			43	34	1	4	4		

- Molecule 6 is 5,6,7,8-TETRAHYDROBIOPTERIN (three-letter code: H4B) (formula: $C_9H_{15}N_5O_3$).



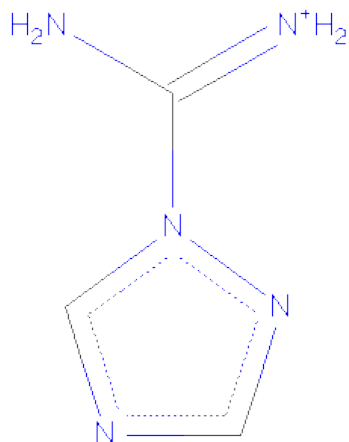
Mol	Chain	Residues	Atoms				ZeroOcc	AltConf
6	A	1	Total	C	N	O	0	0
			17	9	5	3		

Continued on next page...

Continued from previous page...

Mol	Chain	Residues	Atoms				ZeroOcc	AltConf
6	B	1	Total	C	N	O	0	0
			17	9	5	3		

- Molecule 7 is 1,2,4-TRIAZOLE-CARBOXAMIDINE (three-letter code: TZC) (formula: $C_3H_6N_5$).



Mol	Chain	Residues	Atoms			ZeroOcc	AltConf
7	A	1	Total	C	N	0	0
			8	3	5		
7	B	1	Total	C	N	0	0
			8	3	5		

- Molecule 8 is GLYCEROL (three-letter code: GOL) (formula: $C_3H_8O_3$).



Mol	Chain	Residues	Atoms			ZeroOcc	AltConf
8	A	1	Total	C	O	0	0
			6	3	3		
8	B	1	Total	C	O	0	0
			6	3	3		

- Molecule 9 is water.

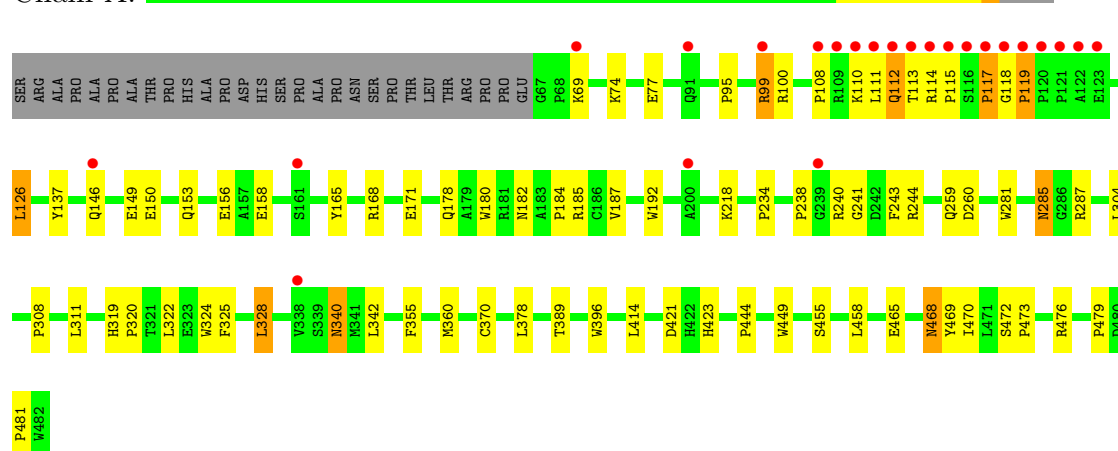
Mol	Chain	Residues	Atoms		ZeroOcc	AltConf
9	A	136	Total	O	0	0
			136	136		
9	B	124	Total	O	0	0
			124	124		

3 Residue-property plots

These plots are drawn for all protein, RNA and DNA chains in the entry. The first graphic for a chain summarises the proportions of errors displayed in the second graphic. The second graphic shows the sequence view annotated by issues in geometry and electron density. Residues are color-coded according to the number of geometric quality criteria for which they contain at least one outlier: green = 0, yellow = 1, orange = 2 and red = 3 or more. A red dot above a residue indicates a poor fit to the electron density ($RSRZ > 2$). Stretches of 2 or more consecutive residues without any outlier are shown as a green connector. Residues present in the sample, but not in the model, are shown in grey.

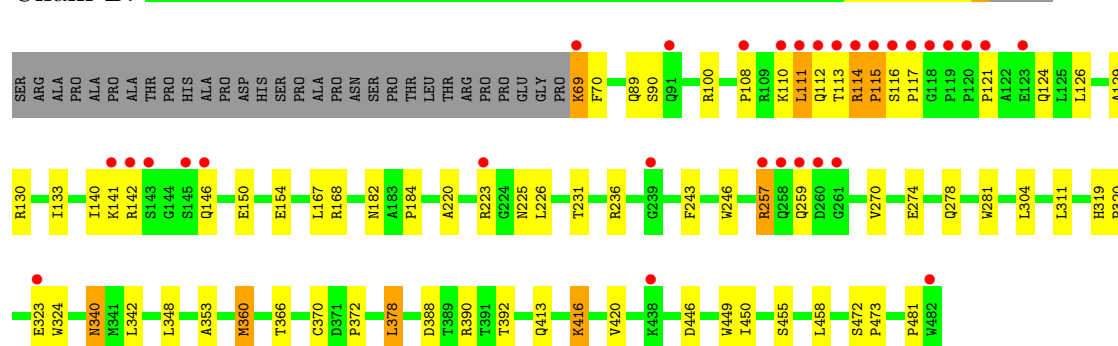
• Molecule 1: NITRIC OXIDE SYNTHASE

Chain A:



• Molecule 1: NITRIC OXIDE SYNTHASE

Chain B:



4 Data and refinement statistics

Property	Value	Source
Space group	P 21 21 21	Depositor
Cell constants a, b, c, α , β , γ	58.53Å 106.60Å 157.08Å 90.00° 90.00° 90.00°	Depositor
Resolution (Å)	36.65 – 2.25 36.65 – 2.24	Depositor EDS
% Data completeness (in resolution range)	69.0 (36.65-2.25) 69.1 (36.65-2.24)	Depositor EDS
R_{merge}	0.07	Depositor
R_{sym}	(Not available)	Depositor
$\langle I/\sigma(I) \rangle$ ¹	2.50 (at 2.24Å)	Xtriage
Refinement program	CNS 0.9	Depositor
R, R_{free}	0.199 , 0.239 0.199 , (Not available)	Depositor DCC
R_{free} test set	No test flags present.	DCC
Wilson B-factor (Å ²)	33.5	Xtriage
Anisotropy	0.728	Xtriage
Bulk solvent k_{sol} (e/Å ³), B_{sol} (Å ²)	0.34 , 32.7	EDS
Estimated twinning fraction	No twinning to report.	Xtriage
L-test for twinning	$\langle L \rangle = 0.50$, $\langle L^2 \rangle = 0.34$	Xtriage
Outliers	1 of 37105 reflections (0.003%)	Xtriage
F_o, F_c correlation	0.95	EDS
Total number of atoms	7024	wwPDB-VP
Average B, all atoms (Å ²)	47.0	wwPDB-VP

Xtriage's analysis on translational NCS is as follows: *The largest off-origin peak in the Patterson function is 4.00% of the height of the origin peak. No significant pseudotranslation is detected.*

¹Intensities estimated from amplitudes.

5 Model quality

5.1 Standard geometry

Bond lengths and bond angles in the following residue types are not validated in this section: GOL, ZN, H4B, TZC, ACT, CAC, HEM

The Z score for a bond length (or angle) is the number of standard deviations the observed value is removed from the expected value. A bond length (or angle) with $|Z| > 5$ is considered an outlier worth inspection. RMSZ is the root-mean-square of all Z scores of the bond lengths (or angles).

Mol	Chain	Bond lengths		Bond angles	
		RMSZ	$\# Z > 5$	RMSZ	$\# Z > 5$
1	A	0.40	0/3397	0.66	1/4631 (0.0%)
1	B	0.37	0/3385	0.66	2/4614 (0.0%)
All	All	0.38	0/6782	0.66	3/9245 (0.0%)

Chiral center outliers are detected by calculating the chiral volume of a chiral center and verifying if the center is modelled as a planar moiety or with the opposite hand. A planarity outlier is detected by checking planarity of atoms in a peptide group, atoms in a mainchain group or atoms of a sidechain that are expected to be planar.

Mol	Chain	#Chirality outliers	#Planarity outliers
1	A	0	1

There are no bond length outliers.

All (3) bond angle outliers are listed below:

Mol	Chain	Res	Type	Atoms	Z	Observed($^{\circ}$)	Ideal($^{\circ}$)
1	B	360	MET	N-CA-C	-5.70	95.62	111.00
1	A	360	MET	N-CA-C	-5.67	95.68	111.00
1	B	243	PHE	N-CA-C	-5.11	97.21	111.00

There are no chirality outliers.

All (1) planarity outliers are listed below:

Mol	Chain	Res	Type	Group
1	A	137	TYR	Sidechain

5.2 Close contacts ⓘ

In the following table, the Non-H and H(model) columns list the number of non-hydrogen atoms and hydrogen atoms in the chain respectively. The H(added) column lists the number of hydrogens added by MolProbity. The Clashes column lists the number of clashes within the asymmetric unit, and the number in parentheses is this value normalized per 1000 atoms of the molecule in the chain. The Symm-Clashes column gives symmetry related clashes, in the same way as for the Clashes column.

Mol	Chain	Non-H	H(model)	H(added)	Clashes	Symm-Clashes
1	A	3302	0	3215	63	0
1	B	3291	0	3205	58	0
2	A	8	0	6	0	0
2	B	8	0	6	0	0
3	A	3	0	0	0	0
3	B	3	0	0	1	0
4	A	1	0	0	0	0
5	A	43	0	30	0	0
5	B	43	0	30	0	0
6	A	17	0	15	0	0
6	B	17	0	15	1	0
7	A	8	0	6	1	0
7	B	8	0	6	0	0
8	A	6	0	8	0	0
8	B	6	0	8	0	0
9	A	136	0	0	2	0
9	B	124	0	0	1	0
All	All	7024	0	6550	116	0

Clashscore is defined as the number of clashes calculated for the entry per 1000 atoms (including hydrogens) of the entry. The overall clashscore for this entry is 9.

All (116) close contacts within the same asymmetric unit are listed below.

Atom-1	Atom-2	Distance(Å)	Clash(Å)
1:A:115:PRO:HD3	1:A:479:PRO:HG2	1.45	0.98
1:A:113:THR:HG21	1:A:342:LEU:HD22	1.51	0.93
1:B:112:GLN:HG3	1:B:113:THR:H	1.35	0.91
1:B:114:ARG:HH11	1:B:114:ARG:HA	1.46	0.81
1:B:89:GLN:HA	1:B:89:GLN:HE21	1.47	0.79
1:B:113:THR:HG21	1:B:342:LEU:HD13	1.68	0.74
1:B:69:LYS:HE2	1:B:69:LYS:N	2.05	0.71
1:B:108:PRO:HB3	1:B:111:LEU:HB2	1.73	0.71
1:A:308:PRO:HD2	1:A:311:LEU:HD12	1.71	0.70
1:A:77:GLU:HG3	1:B:372:PRO:HG2	1.73	0.70

Continued on next page...

Continued from previous page...

Atom-1	Atom-2	Distance(Å)	Clash(Å)
1:A:115:PRO:O	1:A:117:PRO:HD3	1.91	0.69
1:B:281:TRP:HB2	1:B:304:LEU:HD21	1.76	0.68
1:B:114:ARG:HD3	1:B:115:PRO:HD2	1.77	0.67
1:B:89:GLN:HA	1:B:89:GLN:NE2	2.14	0.63
1:B:129:ALA:O	1:B:133:ILE:HG12	1.98	0.62
1:A:370:CYS:SG	1:A:378:LEU:HD13	2.39	0.62
1:B:114:ARG:HH11	1:B:115:PRO:HD3	1.64	0.61
1:B:112:GLN:HG3	1:B:113:THR:N	2.13	0.60
1:B:455:SER:HB3	1:B:458:LEU:HD12	1.83	0.60
1:A:114:ARG:HA	1:A:479:PRO:HG2	1.84	0.58
1:A:322:LEU:HD13	1:A:324:TRP:CZ2	2.38	0.58
1:A:111:LEU:HD23	1:A:476:ARG:NH1	2.20	0.57
1:A:468:ASN:HD22	1:A:469:TYR:N	2.04	0.56
1:A:468:ASN:HD22	1:A:469:TYR:H	1.53	0.56
1:A:178:GLN:HG2	9:A:1982:HOH:O	2.05	0.56
1:B:114:ARG:NH1	1:B:115:PRO:HD3	2.22	0.54
1:A:378:LEU:HB2	9:A:2001:HOH:O	2.07	0.54
1:A:234:PRO:HB2	1:A:243:PHE:CE1	2.41	0.54
1:A:126:LEU:HD11	1:A:156:GLU:HG2	1.89	0.54
1:A:240:ARG:HG2	1:A:241:GLY:N	2.23	0.54
1:A:472:SER:HA	1:A:473:PRO:C	2.29	0.53
1:A:455:SER:HB3	1:A:458:LEU:HD12	1.91	0.53
1:A:114:ARG:HD2	1:A:479:PRO:HG3	1.90	0.53
1:B:257:ARG:HE	1:B:270:VAL:HG11	1.74	0.53
1:B:110:LYS:C	1:B:112:GLN:H	2.12	0.52
1:B:113:THR:HG21	1:B:342:LEU:CD1	2.37	0.52
1:A:146:GLN:O	1:A:150:GLU:HG3	2.10	0.52
1:A:259:GLN:HG2	1:A:260:ASP:N	2.25	0.51
1:B:472:SER:HA	1:B:473:PRO:C	2.31	0.51
1:B:449:TRP:HA	6:B:2600:H4B:N1	2.26	0.51
1:A:114:ARG:HA	1:A:479:PRO:CG	2.40	0.50
1:A:126:LEU:CD1	1:A:156:GLU:HG2	2.41	0.50
1:A:168:ARG:HB2	1:A:171:GLU:HG3	1.93	0.50
1:A:340:ASN:HD22	1:A:340:ASN:H	1.60	0.50
1:B:366:THR:O	1:B:370:CYS:HB2	2.12	0.50
1:B:146:GLN:O	1:B:150:GLU:HG3	2.11	0.50
1:A:99:ARG:HH11	1:A:99:ARG:CG	2.25	0.50
1:A:325:PHE:O	1:A:328:LEU:HB2	2.11	0.49
1:B:270:VAL:O	1:B:274:GLU:HG3	2.12	0.49
1:A:355:PHE:CD1	7:A:1790:TZC:H3	2.46	0.49
1:A:111:LEU:HG	1:A:470:ILE:HD13	1.95	0.49
1:A:285:ASN:C	1:A:285:ASN:HD22	2.14	0.49

Continued on next page...

Continued from previous page...

Atom-1	Atom-2	Distance(Å)	Clash(Å)
1:A:182:ASN:O	1:A:184:PRO:HD3	2.12	0.49
1:A:281:TRP:HB2	1:A:304:LEU:HD21	1.94	0.49
1:B:370:CYS:SG	1:B:378:LEU:HD13	2.53	0.49
1:A:77:GLU:HG3	1:B:372:PRO:CG	2.42	0.48
1:B:114:ARG:NH1	1:B:114:ARG:HA	2.21	0.48
1:A:111:LEU:O	1:A:112:GLN:C	2.52	0.48
1:A:95:PRO:HD3	1:A:110:LYS:HG3	1.94	0.48
1:A:69:LYS:HG2	1:A:69:LYS:O	2.14	0.48
1:B:114:ARG:HD3	1:B:115:PRO:CD	2.43	0.48
1:B:388:ASP:OD1	1:B:390:ARG:HG3	2.14	0.47
1:B:342:LEU:HD23	1:B:342:LEU:C	2.35	0.47
1:A:149:GLU:O	1:A:153:GLN:HG3	2.14	0.47
1:B:413:GLN:O	1:B:416:LYS:HE3	2.14	0.47
1:A:110:LYS:HA	1:A:110:LYS:HE3	1.97	0.47
1:B:319:HIS:CG	1:B:320:PRO:HD2	2.50	0.47
1:B:340:ASN:HD22	1:B:340:ASN:H	1.62	0.47
1:B:69:LYS:HE3	1:B:70:PHE:CD1	2.50	0.47
1:B:110:LYS:O	1:B:112:GLN:N	2.48	0.46
1:B:111:LEU:HD12	1:B:111:LEU:N	2.31	0.46
1:A:115:PRO:C	1:A:117:PRO:HD3	2.35	0.46
1:B:246:TRP:CD1	1:B:481:PRO:HG3	2.51	0.46
1:B:108:PRO:CB	1:B:111:LEU:HB2	2.45	0.46
1:B:150:GLU:O	1:B:154:GLU:HG3	2.17	0.45
1:A:421:ASP:OD2	1:A:423:HIS:HB2	2.16	0.45
1:A:99:ARG:NH1	1:A:99:ARG:HG3	2.33	0.44
1:B:142:ARG:HD3	1:B:142:ARG:HA	1.85	0.44
1:B:140:ILE:O	1:B:142:ARG:HG2	2.17	0.44
1:A:244:ARG:NH2	1:A:481:PRO:HD3	2.33	0.44
1:A:319:HIS:CG	1:A:320:PRO:HD2	2.52	0.44
1:B:167:LEU:HG	1:B:348:LEU:HD12	1.99	0.44
1:B:378:LEU:HB2	9:B:2896:HOH:O	2.17	0.44
1:A:95:PRO:HG3	1:A:108:PRO:HG3	2.00	0.43
1:A:158:GLU:HG2	1:A:165:TYR:HA	1.99	0.43
1:A:99:ARG:HH11	1:A:99:ARG:HB2	1.83	0.43
1:B:69:LYS:HE3	1:B:70:PHE:CE1	2.53	0.43
1:B:446:ASP:O	1:B:450:ILE:HG12	2.18	0.43
1:A:423:HIS:HB2	1:B:392:THR:HB	1.99	0.43
1:A:389:THR:HA	1:A:396:TRP:CD1	2.53	0.43
1:A:74:LYS:O	1:A:465:GLU:HG3	2.18	0.43
1:B:126:LEU:O	1:B:130:ARG:HG3	2.18	0.43
1:A:99:ARG:NH2	1:B:90:SER:O	2.51	0.43
1:B:116:SER:N	1:B:117:PRO:CD	2.81	0.43

Continued on next page...

Continued from previous page...

Atom-1	Atom-2	Distance(Å)	Clash(Å)
1:A:180:TRP:CE3	1:A:192:TRP:HA	2.54	0.42
1:B:223:ARG:CZ	1:B:223:ARG:HA	2.49	0.42
1:B:182:ASN:O	1:B:184:PRO:HD3	2.19	0.42
1:A:99:ARG:NH1	1:A:99:ARG:CG	2.82	0.42
1:B:116:SER:HB2	1:B:236:ARG:CZ	2.50	0.42
1:B:220:ALA:O	1:B:226:LEU:HA	2.20	0.42
1:B:324:TRP:HB2	3:B:950:CAC:C1	2.49	0.42
1:A:117:PRO:O	1:A:118:GLY:C	2.59	0.42
1:A:126:LEU:HA	1:A:126:LEU:HD22	1.82	0.41
1:B:231:THR:O	1:B:353:ALA:HA	2.21	0.41
1:B:111:LEU:HD12	1:B:111:LEU:H	1.84	0.41
1:B:360:MET:HA	1:B:420:VAL:O	2.20	0.41
1:A:458:LEU:HD22	1:B:378:LEU:HD21	2.02	0.41
1:A:285:ASN:C	1:A:285:ASN:ND2	2.74	0.41
1:A:185:ARG:HD3	1:A:449:TRP:CD2	2.55	0.41
1:A:187:VAL:O	1:A:187:VAL:HG22	2.21	0.41
1:A:308:PRO:CD	1:A:311:LEU:HD12	2.47	0.41
1:A:259:GLN:HG2	1:A:260:ASP:H	1.85	0.40
1:B:89:GLN:CA	1:B:89:GLN:HE21	2.17	0.40
1:A:218:LYS:CG	1:A:311:LEU:HD22	2.52	0.40
1:A:444:PRO:HB3	1:A:469:TYR:CE1	2.57	0.40
1:A:340:ASN:N	1:A:340:ASN:HD22	2.18	0.40

There are no symmetry-related clashes.

5.3 Torsion angles

5.3.1 Protein backbone ⓘ

In the following table, the Percentiles column shows the percent Ramachandran outliers of the chain as a percentile score with respect to all X-ray entries followed by that with respect to entries of similar resolution. The Analysed column shows the number of residues for which the backbone conformation was analysed, and the total number of residues.

Mol	Chain	Analysed	Favoured	Allowed	Outliers	Percentiles	
1	A	414/444 (93%)	390 (94%)	20 (5%)	4 (1%)	22	17
1	B	412/444 (93%)	390 (95%)	18 (4%)	4 (1%)	22	17
All	All	826/888 (93%)	780 (94%)	38 (5%)	8 (1%)	22	17

All (8) Ramachandran outliers are listed below:

Mol	Chain	Res	Type
1	A	117	PRO
1	B	259	GLN
1	A	112	GLN
1	B	111	LEU
1	A	119	PRO
1	B	115	PRO
1	A	238	PRO
1	B	121	PRO

5.3.2 Protein sidechains ⓘ

In the following table, the Percentiles column shows the percent sidechain outliers of the chain as a percentile score with respect to all X-ray entries followed by that with respect to entries of similar resolution. The Analysed column shows the number of residues for which the sidechain conformation was analysed, and the total number of residues.

Mol	Chain	Analysed	Rotameric	Outliers	Percentiles	
1	A	354/377 (94%)	344 (97%)	10 (3%)	56	65
1	B	353/377 (94%)	339 (96%)	14 (4%)	42	49
All	All	707/754 (94%)	683 (97%)	24 (3%)	49	57

All (24) residues with a non-rotameric sidechain are listed below:

Mol	Chain	Res	Type
1	A	99	ARG
1	A	100	ARG
1	A	119	PRO
1	A	126	LEU
1	A	285	ASN
1	A	287	ARG
1	A	328	LEU
1	A	340	ASN
1	A	414	LEU
1	A	468	ASN
1	B	69	LYS
1	B	100	ARG
1	B	114	ARG
1	B	124	GLN
1	B	141	LYS
1	B	168	ARG
1	B	225	ASN
1	B	257	ARG

Continued on next page...

Continued from previous page...

Mol	Chain	Res	Type
1	B	278	GLN
1	B	311	LEU
1	B	323	GLU
1	B	340	ASN
1	B	378	LEU
1	B	416	LYS

Some sidechains can be flipped to improve hydrogen bonding and reduce clashes. All (18) such sidechains are listed below:

Mol	Chain	Res	Type
1	A	112	GLN
1	A	146	GLN
1	A	153	GLN
1	A	191	GLN
1	A	278	GLN
1	A	285	ASN
1	A	340	ASN
1	A	376	ASN
1	A	413	GLN
1	A	468	ASN
1	B	89	GLN
1	B	112	GLN
1	B	191	GLN
1	B	222	ASN
1	B	225	ASN
1	B	278	GLN
1	B	340	ASN
1	B	405	ASN

5.3.3 RNA ⓘ

There are no RNA chains in this entry.

5.4 Non-standard residues in protein, DNA, RNA chains ⓘ

There are no non-standard protein/DNA/RNA residues in this entry.

5.5 Carbohydrates ⓘ

There are no carbohydrates in this entry.

5.6 Ligand geometry ⓘ

Of 15 ligands modelled in this entry, 1 is monoatomic - leaving 14 for Mogul analysis.

In the following table, the Counts columns list the number of bonds (or angles) for which Mogul statistics could be retrieved, the number of bonds (or angles) that are observed in the model and the number of bonds (or angles) that are defined in the chemical component dictionary. The Link column lists molecule types, if any, to which the group is linked. The Z score for a bond length (or angle) is the number of standard deviations the observed value is removed from the expected value. A bond length (or angle) with $|Z| > 2$ is considered an outlier worth inspection. RMSZ is the root-mean-square of all Z scores of the bond lengths (or angles).

Mol	Type	Chain	Res	Link	Bond lengths			Bond angles		
					Counts	RMSZ	# $ Z > 2$	Counts	RMSZ	# $ Z > 2$
5	HEM	A	1500	1	49,50,50	1.93	13 (26%)	46,82,82	1.59	9 (19%)
6	H4B	A	1600	-	18,18,18	1.47	4 (22%)	24,26,26	2.52	9 (37%)
7	TZC	A	1790	-	8,8,8	2.66	5 (62%)	9,10,10	5.70	6 (66%)
2	ACT	A	1850	-	1,3,3	1.05	0	0,3,3	0.00	-
2	ACT	A	1860	-	1,3,3	3.96	1 (100%)	0,3,3	0.00	-
8	GOL	A	1880	-	5,5,5	0.08	0	5,5,5	0.29	0
3	CAC	A	950	1	2,2,4	0.56	0	0,1,6	0.00	-
5	HEM	B	2500	1	49,50,50	1.91	11 (22%)	46,82,82	1.59	9 (19%)
6	H4B	B	2600	-	18,18,18	1.44	4 (22%)	24,26,26	2.62	8 (33%)
7	TZC	B	2790	-	8,8,8	2.79	5 (62%)	9,10,10	5.55	6 (66%)
2	ACT	B	2850	-	1,3,3	1.74	0	0,3,3	0.00	-
2	ACT	B	2860	-	1,3,3	2.40	1 (100%)	0,3,3	0.00	-
8	GOL	B	2880	-	5,5,5	0.20	0	5,5,5	0.42	0
3	CAC	B	950	1	2,2,4	0.49	0	0,1,6	0.00	-

In the following table, the Chirals column lists the number of chiral outliers, the number of chiral centers analysed, the number of these observed in the model and the number defined in the chemical component dictionary. Similar counts are reported in the Torsion and Rings columns. '-' means no outliers of that kind were identified.

Mol	Type	Chain	Res	Link	Chirals	Torsions	Rings
5	HEM	A	1500	1	-	0/14/114/114	0/0/8/8
6	H4B	A	1600	-	-	0/8/17/17	0/0/2/2
7	TZC	A	1790	-	-	0/0/4/4	0/1/1/1
2	ACT	A	1850	-	-	0/0/0/0	0/0/0/0
2	ACT	A	1860	-	-	0/0/0/0	0/0/0/0
8	GOL	A	1880	-	-	0/4/4/4	0/0/0/0
3	CAC	A	950	1	-	0/0/0/0	0/0/0/0
5	HEM	B	2500	1	-	0/14/114/114	0/0/8/8
6	H4B	B	2600	-	-	0/8/17/17	0/0/2/2

Continued on next page...

Continued from previous page...

Mol	Type	Chain	Res	Link	Chirals	Torsions	Rings
7	TZC	B	2790	-	-	0/0/4/4	0/1/1/1
2	ACT	B	2850	-	-	0/0/0/0	0/0/0/0
2	ACT	B	2860	-	-	0/0/0/0	0/0/0/0
8	GOL	B	2880	-	-	0/4/4/4	0/0/0/0
3	CAC	B	950	1	-	0/0/0/0	0/0/0/0

All (44) bond length outliers are listed below:

Mol	Chain	Res	Type	Atoms	Z	Observed(Å)	Ideal(Å)
5	B	2500	HEM	C3B-C2B	-6.08	1.33	1.43
5	A	1500	HEM	C3D-C2D	-5.71	1.33	1.43
5	B	2500	HEM	C4A-C3A	4.70	1.46	1.40
5	B	2500	HEM	CHB-C1B	4.68	1.42	1.35
5	A	1500	HEM	C2D-C1D	4.50	1.45	1.44
7	B	2790	TZC	C5-N1	4.37	1.41	1.32
5	B	2500	HEM	C3C-C2C	-4.09	1.36	1.43
7	A	1790	TZC	C5-N1	4.06	1.40	1.32
2	A	1860	ACT	CH3-C	3.96	1.54	1.48
5	A	1500	HEM	C3B-C4B	3.74	1.48	1.44
7	A	1790	TZC	C3-N2	3.72	1.38	1.31
7	B	2790	TZC	C3-N2	3.70	1.38	1.31
7	B	2790	TZC	C3-N4	3.66	1.38	1.34
5	A	1500	HEM	C3B-C2B	-3.60	1.37	1.43
7	A	1790	TZC	C3-N4	3.60	1.38	1.34
5	A	1500	HEM	C3C-C2C	-3.59	1.37	1.43
5	B	2500	HEM	CHA-C4D	3.41	1.40	1.35
6	B	2600	H4B	C6-N5	3.38	1.53	1.46
6	A	1600	H4B	C6-N5	3.37	1.53	1.46
5	A	1500	HEM	CHD-C4C	3.18	1.42	1.36
5	B	2500	HEM	C3D-C2D	-3.05	1.38	1.43
5	A	1500	HEM	CHA-C4D	3.04	1.40	1.35
5	A	1500	HEM	C4A-C3A	2.86	1.43	1.40
7	B	2790	TZC	N2-N1	2.85	1.42	1.36
5	A	1500	HEM	C3D-C4D	2.77	1.45	1.44
6	B	2600	H4B	C4-N3	2.76	1.41	1.37
5	A	1500	HEM	C1C-NC	2.69	1.41	1.38
6	B	2600	H4B	C4A-N5	2.53	1.47	1.38
7	A	1790	TZC	C5-N4	2.48	1.39	1.34
7	A	1790	TZC	N2-N1	2.48	1.41	1.36
5	A	1500	HEM	C4A-NA	2.45	1.41	1.36
2	B	2860	ACT	CH3-C	2.40	1.52	1.48
6	A	1600	H4B	C4-N3	2.38	1.41	1.37

Continued on next page...

Continued from previous page...

Mol	Chain	Res	Type	Atoms	Z	Observed(Å)	Ideal(Å)
6	A	1600	H4B	C4A-N5	2.37	1.46	1.38
7	B	2790	TZC	C5-N4	2.33	1.38	1.34
5	B	2500	HEM	CMC-C2C	2.33	1.54	1.47
5	B	2500	HEM	FE-NA	2.29	2.02	1.92
5	A	1500	HEM	CHC-C1C	2.23	1.40	1.36
5	B	2500	HEM	CHC-C1C	2.12	1.40	1.36
5	B	2500	HEM	CMD-C2D	2.11	1.54	1.47
5	A	1500	HEM	CMC-C2C	2.10	1.53	1.47
5	B	2500	HEM	C3D-C4D	2.09	1.45	1.44
6	A	1600	H4B	C2-N1	2.06	1.36	1.33
6	B	2600	H4B	C2-N1	2.06	1.36	1.33

All (47) bond angle outliers are listed below:

Mol	Chain	Res	Type	Atoms	Z	Observed(°)	Ideal(°)
7	A	1790	TZC	N2-C3-N4	-9.41	107.36	116.05
7	A	1790	TZC	C3-N2-N1	9.33	110.70	102.73
6	B	2600	H4B	C4-C4A-C8A	9.09	122.98	114.56
7	B	2790	TZC	C3-N2-N1	8.84	110.28	102.73
7	B	2790	TZC	N2-C3-N4	-8.81	107.91	116.05
6	A	1600	H4B	C4-C4A-C8A	8.50	122.43	114.56
7	A	1790	TZC	C5-N4-C3	7.51	107.74	102.31
7	B	2790	TZC	C5-N4-C3	7.26	107.56	102.31
7	B	2790	TZC	C5-N1-N2	-5.20	103.56	111.78
7	A	1790	TZC	C5-N1-N2	-5.10	103.72	111.78
5	B	2500	HEM	CBA-CAA-C2A	-4.85	104.16	112.69
7	B	2790	TZC	N7-C6-N1	4.80	122.37	115.63
7	A	1790	TZC	N7-C6-N1	4.19	121.52	115.63
5	A	1500	HEM	C4A-CHB-C1B	-3.97	122.25	127.47
7	B	2790	TZC	C6-N1-N2	3.89	128.82	120.44
5	B	2500	HEM	C3B-C4B-NB	-3.82	111.27	114.00
5	A	1500	HEM	CBA-CAA-C2A	-3.80	105.99	112.69
7	A	1790	TZC	C6-N1-N2	3.80	128.63	120.44
5	A	1500	HEM	C3B-C4B-NB	-3.63	111.40	114.00
6	A	1600	H4B	C2-N1-C8A	3.51	122.59	117.61
5	B	2500	HEM	CBD-CAD-C3D	-3.36	107.04	114.37
5	B	2500	HEM	CHC-C4B-NB	-3.21	121.91	124.58
6	B	2600	H4B	C2-N1-C8A	3.17	122.12	117.61
6	B	2600	H4B	C4-N3-C2	3.03	124.82	119.51
6	A	1600	H4B	C4-N3-C2	3.04	124.82	119.51
6	A	1600	H4B	C4A-C8A-N8	2.85	123.15	119.23
5	A	1500	HEM	C1A-CHA-C4D	-2.81	123.77	127.47

Continued on next page...

Continued from previous page...

Mol	Chain	Res	Type	Atoms	Z	Observed(°)	Ideal(°)
5	A	1500	HEM	C4A-C3A-C2A	-2.80	105.05	107.00
5	B	2500	HEM	C4A-NA-C1A	-2.79	103.09	106.76
6	B	2600	H4B	C4A-N5-C6	-2.76	113.64	121.16
5	B	2500	HEM	C1A-CHA-C4D	-2.72	123.89	127.47
6	B	2600	H4B	N3-C2-N1	-2.65	118.06	121.78
6	A	1600	H4B	N3-C2-N1	-2.61	118.12	121.78
6	B	2600	H4B	C9-C6-N5	-2.61	104.82	109.69
6	B	2600	H4B	C4A-C8A-N8	2.60	122.80	119.23
6	A	1600	H4B	C4A-N5-C6	-2.52	114.31	121.16
5	A	1500	HEM	CHC-C4B-NB	-2.51	122.50	124.58
5	A	1500	HEM	C3A-C4A-NA	2.48	111.28	109.41
6	B	2600	H4B	O9-C9-C6	2.47	115.05	109.07
5	B	2500	HEM	C3A-C4A-NA	2.41	111.23	109.41
6	A	1600	H4B	C9-C6-N5	-2.36	105.28	109.69
5	A	1500	HEM	C1A-C2A-C3A	2.26	109.26	106.92
6	A	1600	H4B	O9-C9-C6	2.23	114.47	109.07
5	A	1500	HEM	C1B-NB-C4B	-2.17	102.94	105.16
5	B	2500	HEM	C2A-C1A-NA	2.16	112.73	109.73
6	A	1600	H4B	C4A-C8A-N1	-2.10	118.14	121.50
5	B	2500	HEM	C4A-CHB-C1B	-2.03	124.80	127.47

There are no chirality outliers.

There are no torsion outliers.

There are no ring outliers.

5.7 Other polymers ⓘ

There are no such residues in this entry.

5.8 Polymer linkage issues

There are no chain breaks in this entry.

6 Fit of model and data ⓘ

6.1 Protein, DNA and RNA chains ⓘ

In the following table, the column labelled ‘#RSRZ > 2’ contains the number (and percentage) of RSRZ outliers, followed by percent RSRZ outliers for the chain as percentile scores relative to all X-ray entries and entries of similar resolution. The OWAB column contains the minimum, median, 95th percentile and maximum values of the occupancy-weighted average B-factor per residue. The column labelled ‘Q < 0.9’ lists the number of (and percentage) of residues with an average occupancy less than 0.9.

Mol	Chain	Analysed	<RSRZ>	#RSRZ>2	OWAB(Å ²)	Q<0.9
1	A	416/444 (93%)	0.20	24 (5%) 22 26	28, 42, 75, 99	0
1	B	414/444 (93%)	0.27	31 (7%) 14 17	29, 45, 78, 99	0
All	All	830/888 (93%)	0.23	55 (6%) 18 21	28, 43, 78, 99	0

All (55) RSRZ outliers are listed below:

Mol	Chain	Res	Type	RSRZ
1	B	117	PRO	13.1
1	B	111	LEU	12.1
1	A	113	THR	11.6
1	B	115	PRO	11.4
1	A	119	PRO	11.1
1	A	117	PRO	11.0
1	B	118	GLY	10.3
1	B	110	LYS	10.1
1	B	113	THR	9.5
1	A	118	GLY	9.2
1	A	115	PRO	7.6
1	A	114	ARG	7.6
1	A	111	LEU	7.4
1	B	119	PRO	7.0
1	A	110	LYS	6.4
1	B	116	SER	6.3
1	A	112	GLN	6.2
1	B	114	ARG	5.6
1	A	109	ARG	5.4
1	B	121	PRO	5.3
1	A	239	GLY	5.3
1	A	116	SER	4.9
1	A	120	PRO	4.9
1	B	260	ASP	4.9

Continued on next page...

Continued from previous page...

Mol	Chain	Res	Type	RSRZ
1	B	120	PRO	4.8
1	B	112	GLN	4.6
1	B	261	GLY	3.8
1	A	121	PRO	3.8
1	B	146	GLN	3.7
1	A	69	LYS	3.6
1	B	108	PRO	3.3
1	B	223	ARG	3.2
1	B	142	ARG	2.9
1	A	91	GLN	2.8
1	A	123	GLU	2.8
1	B	259	GLN	2.8
1	B	145	SER	2.6
1	A	200	ALA	2.6
1	B	69	LYS	2.6
1	B	143	SER	2.6
1	B	257	ARG	2.6
1	B	239	GLY	2.5
1	A	122	ALA	2.5
1	A	338	VAL	2.4
1	B	91	GLN	2.4
1	B	482	TRP	2.4
1	B	141	LYS	2.3
1	B	438	LYS	2.3
1	A	108	PRO	2.2
1	A	161	SER	2.2
1	A	146	GLN	2.1
1	B	323	GLU	2.0
1	B	258	GLN	2.0
1	B	123	GLU	2.0
1	A	99	ARG	2.0

6.2 Non-standard residues in protein, DNA, RNA chains ⓘ

There are no non-standard protein/DNA/RNA residues in this entry.

6.3 Carbohydrates ⓘ

There are no carbohydrates in this entry.

6.4 Ligands ⓘ

In the following table, the Atoms column lists the number of modelled atoms in the group and the number defined in the chemical component dictionary. LLDF column lists the quality of electron density of the group with respect to its neighbouring residues in protein, DNA or RNA chains. The B-factors column lists the minimum, median, 95th percentile and maximum values of B factors of atoms in the group. The column labelled 'Q< 0.9' lists the number of atoms with occupancy less than 0.9.

Mol	Type	Chain	Res	Atoms	RSR	LLDF	B-factors(Å ²)	Q<0.9
2	ACT	B	2860	4/4	0.22	7.69	50,51,52,58	0
8	GOL	A	1880	6/6	0.26	3.16	53,55,58,62	0
2	ACT	A	1850	4/4	0.20	1.78	42,42,42,43	0
8	GOL	B	2880	6/6	0.17	1.56	46,52,54,58	0
7	TZC	B	2790	8/8	0.22	1.42	30,34,36,36	0
6	H4B	B	2600	17/17	0.16	1.38	29,33,38,41	0
2	ACT	A	1860	4/4	0.12	1.19	40,45,46,47	0
5	HEM	A	1500	43/43	0.18	1.08	24,30,41,44	0
7	TZC	A	1790	8/8	0.20	0.77	31,33,33,34	0
5	HEM	B	2500	43/43	0.15	0.69	26,31,36,47	0
6	H4B	A	1600	17/17	0.15	0.40	27,31,35,40	0
3	CAC	A	950	3/5	0.08	-0.43	57,57,60,69	0
2	ACT	B	2850	4/4	0.12	-0.56	42,43,46,46	0
3	CAC	B	950	3/5	0.06	-1.88	75,75,76,79	0
4	ZN	A	900	1/1	0.03	-3.88	47,47,47,47	0

6.5 Other polymers ⓘ

There are no such residues in this entry.