



# wwPDB X-ray Structure Validation Summary Report

Feb 28, 2014 – 12:41 AM GMT

PDB ID : 1DMI  
Title : BOVINE ENDOTHELIAL NITRIC OXIDE SYNTHASE HEME DOMAIN  
COMPLEXED WITH 6S-H4B  
Authors : Raman, C.S.; Li, H.; Martasek, P.; Kotsonis, P.; Pfeiderer, W.; Schmidt,  
H.H.H.W.; Masters, B.S.S.; Poulos, T.L.  
Deposited on : 1999-12-14  
Resolution : 2.00 Å(reported)

This is a wwPDB validation summary report for a publicly released PDB entry.  
We welcome your comments at [validation@mail.wwpdb.org](mailto:validation@mail.wwpdb.org)  
A user guide is available at <http://wwpdb.org/ValidationPDFNotes.html>

---

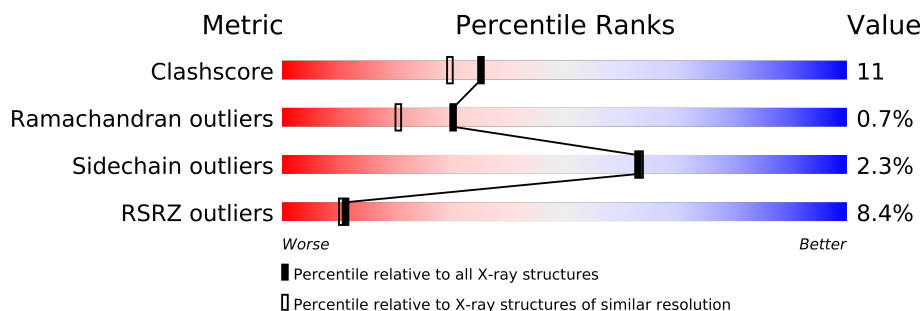
The following versions of software and data (see [references](#)) were used in the production of this report:

MolProbity : 4.02b-467  
Mogul : 1.15 2013  
Xtriage (Phenix) : dev-1323  
EDS : stable22639  
Percentile statistics : 21963  
Refmac : 5.8.0049  
CCP4 : 6.3.0 (Settle)  
Ideal geometry (proteins) : Engh & Huber (2001)  
Ideal geometry (DNA, RNA) : Parkinson et. al. (1996)  
Validation Pipeline (wwPDB-VP) : stable22683

# 1 Overall quality at a glance

The reported resolution of this entry is 2.00 Å.

Percentile scores (ranging between 0-100) for global validation metrics of the entry are shown in the following graphic. The table shows the number of entries on which the scores are based.



Metric	Whole archive (#Entries)	Similar resolution (#Entries, resolution range(Å))
Clashscore	79885	6188 (2.00-2.00)
Ramachandran outliers	78287	6102 (2.00-2.00)
Sidechain outliers	78261	6100 (2.00-2.00)
RSRZ outliers	66119	4890 (2.00-2.00)

The table below summarises the geometric issues observed across the polymeric chains and their fit to the electron density. The red, orange, yellow and green segments on the lower bar indicate the fraction of residues that contain outliers for  $\geq 3$ , 2, 1 and 0 types of geometric quality criteria. The upper red bar (where present) indicates the fraction of residues that have poor fit to the electron density.

Mol	Chain	Length	Quality of chain
1	A	444	
1	B	444	

## 2 Entry composition i

There are 9 unique types of molecules in this entry. The entry contains 7148 atoms, of which 0 are hydrogen and 0 are deuterium.

In the tables below, the ZeroOcc column contains the number of atoms modelled with zero occupancy, the AltConf column contains the number of residues with at least one atom in alternate conformation and the Trace column contains the number of residues modelled with at most 2 atoms.

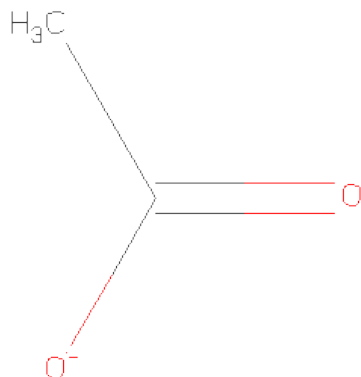
- Molecule 1 is a protein called NITRIC OXIDE SYNTHASE.

Mol	Chain	Residues	Atoms					ZeroOcc	AltConf	Trace
1	A	416	Total	C	N	O	S	0	0	0
			3302	2099	584	603	16			
1	B	414	Total	C	N	O	S	0	0	0
			3291	2092	582	601	16			

There are 2 discrepancies between the modelled and reference sequences:

Chain	Residue	Modelled	Actual	Comment	Reference
A	100	ARG	CYS	CONFLICT	UNP P29473
B	100	ARG	CYS	CONFLICT	UNP P29473

- Molecule 2 is ACETATE ION (three-letter code: ACT) (formula: C<sub>2</sub>H<sub>3</sub>O<sub>2</sub>).



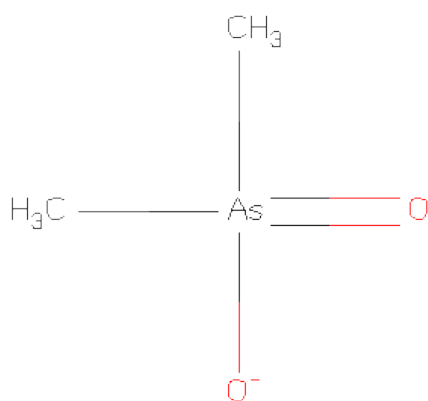
Mol	Chain	Residues	Atoms			ZeroOcc	AltConf
2	A	1	Total	C	O	0	0
			4	2	2		

*Continued on next page...*

*Continued from previous page...*

Mol	Chain	Residues	Atoms			ZeroOcc	AltConf
2	A	1	Total	C	O	0	0
			4	2	2		
2	B	1	Total	C	O	0	0
			4	2	2		
2	B	1	Total	C	O	0	0
			4	2	2		

- Molecule 3 is CACODYLATE ION (three-letter code: CAC) (formula:  $C_2H_6AsO_2$ ).

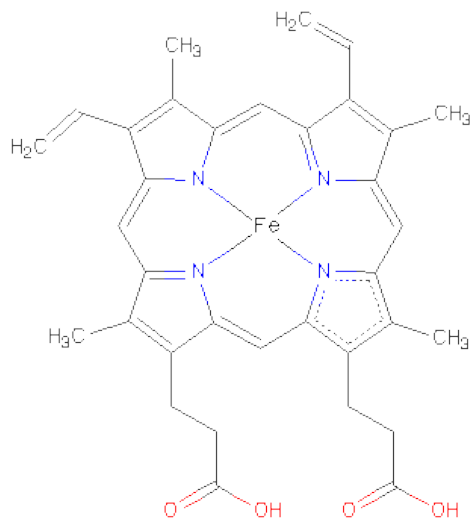


Mol	Chain	Residues	Atoms			ZeroOcc	AltConf
3	A	1	Total	As	C	0	0
			3	1	2		
3	B	1	Total	As	C	0	0
			3	1	2		

- Molecule 4 is ZINC ION (three-letter code: ZN) (formula: Zn).

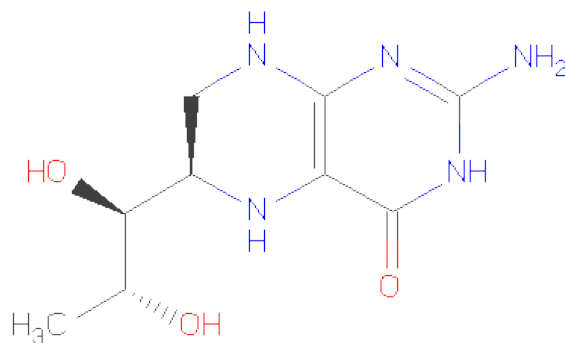
Mol	Chain	Residues	Atoms		ZeroOcc	AltConf
4	A	1	Total	Zn	0	0
			1	1		

- Molecule 5 is PROTOPORPHYRIN IX CONTAINING FE (three-letter code: HEM) (formula:  $C_{34}H_{32}FeN_4O_4$ ).



Mol	Chain	Residues	Atoms					ZeroOcc	AltConf
5	A	1	Total	C	Fe	N	O	0	0
			43	34	1	4	4		
5	B	1	Total	C	Fe	N	O	0	0
			43	34	1	4	4		

- Molecule 6 is 6S-5,6,7,8-TETRAHYDROBIOPTERIN (three-letter code: BHS) (formula:  $C_9H_{15}N_5O_3$ ).



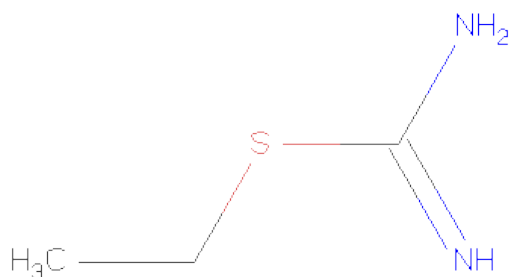
Mol	Chain	Residues	Atoms				ZeroOcc	AltConf
6	A	1	Total	C	N	O	0	0
			17	9	5	3		

*Continued on next page...*

*Continued from previous page...*

Mol	Chain	Residues	Atoms				ZeroOcc	AltConf
6	B	1	Total	C	N	O	0	0
			17	9	5	3		

- Molecule 7 is ETHYLISOTHIOUREA (three-letter code: ITU) (formula:  $C_3H_8N_2S$ ).



Mol	Chain	Residues	Atoms				ZeroOcc	AltConf
7	A	1	Total	C	N	S	0	0
			6	3	2	1		
7	B	1	Total	C	N	S	0	0
			6	3	2	1		

- Molecule 8 is GLYCEROL (three-letter code: GOL) (formula:  $C_3H_8O_3$ ).



Mol	Chain	Residues	Atoms			ZeroOcc	AltConf
8	A	1	Total	C	O	0	0
			6	3	3		
8	B	1	Total	C	O	0	0
			6	3	3		

- Molecule 9 is water.

Mol	Chain	Residues	Atoms		ZeroOcc	AltConf
9	A	199	Total	O	0	0
			199	199		
9	B	189	Total	O	0	0
			189	189		





## 4 Data and refinement statistics

Property	Value	Source
Space group	P 21 21 21	Depositor
Cell constants a, b, c, $\alpha$ , $\beta$ , $\gamma$	58.63Å 106.56Å 156.79Å 90.00° 90.00° 90.00°	Depositor
Resolution (Å)	32.59 – 2.00 32.59 – 2.00	Depositor EDS
% Data completeness (in resolution range)	87.2 (32.59-2.00) 80.1 (32.59-2.00)	Depositor EDS
$R_{merge}$	0.05	Depositor
$R_{sym}$	(Not available)	Depositor
$\langle I/\sigma(I) \rangle$ <sup>1</sup>	2.34 (at 2.00Å)	Xtriage
Refinement program	CNS 0.9	Depositor
R, $R_{free}$	0.229 , 0.264 0.219 , (Not available)	Depositor DCC
$R_{free}$ test set	No test flags present.	DCC
Wilson B-factor (Å <sup>2</sup> )	36.4	Xtriage
Anisotropy	0.440	Xtriage
Bulk solvent $k_{sol}$ (e/Å <sup>3</sup> ), $B_{sol}$ (Å <sup>2</sup> )	0.38 , 57.7	EDS
Estimated twinning fraction	No twinning to report.	Xtriage
L-test for twinning	$\langle  L  \rangle = 0.50$ , $\langle L^2 \rangle = 0.33$	Xtriage
Outliers	0 of 61177 reflections	Xtriage
$F_o, F_c$ correlation	0.95	EDS
Total number of atoms	7148	wwPDB-VP
Average B, all atoms (Å <sup>2</sup> )	53.0	wwPDB-VP

Xtriage's analysis on translational NCS is as follows: *The largest off-origin peak in the Patterson function is 3.47% of the height of the origin peak. No significant pseudotranslation is detected.*

<sup>1</sup>Intensities estimated from amplitudes.

## 5 Model quality

### 5.1 Standard geometry

Bond lengths and bond angles in the following residue types are not validated in this section: GOL, ZN, ACT, CAC, HEM, BHS, ITU

The Z score for a bond length (or angle) is the number of standard deviations the observed value is removed from the expected value. A bond length (or angle) with  $|Z| > 5$  is considered an outlier worth inspection. RMSZ is the root-mean-square of all Z scores of the bond lengths (or angles).

Mol	Chain	Bond lengths		Bond angles	
		RMSZ	$\# Z  > 5$	RMSZ	$\# Z  > 5$
1	A	0.39	1/3397 (0.0%)	0.64	2/4631 (0.0%)
1	B	0.36	0/3385	0.61	1/4614 (0.0%)
All	All	0.38	1/6782 (0.0%)	0.62	3/9245 (0.0%)

All (1) bond length outliers are listed below:

Mol	Chain	Res	Type	Atoms	Z	Observed(Å)	Ideal(Å)
1	A	325	PHE	CD2-CE2	-5.21	1.28	1.39

All (3) bond angle outliers are listed below:

Mol	Chain	Res	Type	Atoms	Z	Observed(°)	Ideal(°)
1	A	325	PHE	CB-CG-CD1	-5.83	116.72	120.80
1	A	360	MET	N-CA-C	-5.40	96.42	111.00
1	B	360	MET	N-CA-C	-5.16	97.08	111.00

There are no chirality outliers.

There are no planarity outliers.

### 5.2 Close contacts

In the following table, the Non-H and H(model) columns list the number of non-hydrogen atoms and hydrogen atoms in the chain respectively. The H(added) column lists the number of hydrogens added by MolProbity. The Clashes column lists the number of clashes within the asymmetric unit, and the number in parentheses is this value normalized per 1000 atoms of the molecule in the chain. The Symm-Clashes column gives symmetry related clashes, in the same way as for the Clashes column.

Mol	Chain	Non-H	H(model)	H(added)	Clashes	Symm-Clashes
1	A	3302	0	3215	75	0
1	B	3291	0	3205	73	0
2	A	8	0	6	0	0
2	B	8	0	6	0	0
3	A	3	0	0	0	0
3	B	3	0	0	0	0
4	A	1	0	0	0	0
5	A	43	0	30	0	0
5	B	43	0	30	2	0
6	A	17	0	15	1	0
6	B	17	0	15	2	0
7	A	6	0	7	2	0
7	B	6	0	7	0	0
8	A	6	0	8	0	0
8	B	6	0	8	0	0
9	A	199	0	0	4	0
9	B	189	0	0	3	0
All	All	7148	0	6552	141	0

Clashscore is defined as the number of clashes calculated for the entry per 1000 atoms (including hydrogens) of the entry. The overall clashscore for this entry is 11.

The worst 5 of 141 close contacts within the same asymmetric unit are listed below.

Atom-1	Atom-2	Distance(Å)	Clash(Å)
1:A:115:PRO:HD3	1:A:479:PRO:HG2	1.28	1.15
1:A:126:LEU:HD11	1:A:156:GLU:HG2	1.37	1.02
1:B:126:LEU:HD11	1:B:156:GLU:HG2	1.53	0.89
1:B:108:PRO:HB3	1:B:111:LEU:HD13	1.57	0.84
1:B:114:ARG:HH11	1:B:114:ARG:HA	1.41	0.84

There are no symmetry-related clashes.

## 5.3 Torsion angles

### 5.3.1 Protein backbone ⓘ

In the following table, the Percentiles column shows the percent Ramachandran outliers of the chain as a percentile score with respect to all X-ray entries followed by that with respect to entries of similar resolution. The Analysed column shows the number of residues for which the backbone conformation was analysed, and the total number of residues.

Mol	Chain	Analysed	Favoured	Allowed	Outliers	Percentiles	
1	A	414/444 (93%)	392 (95%)	20 (5%)	2 (0%)	38	29
1	B	412/444 (93%)	387 (94%)	21 (5%)	4 (1%)	22	12
All	All	826/888 (93%)	779 (94%)	41 (5%)	6 (1%)	30	20

5 of 6 Ramachandran outliers are listed below:

Mol	Chain	Res	Type
1	A	117	PRO
1	B	112	GLN
1	B	259	GLN
1	A	112	GLN
1	B	115	PRO

### 5.3.2 Protein sidechains ⓘ

In the following table, the Percentiles column shows the percent sidechain outliers of the chain as a percentile score with respect to all X-ray entries followed by that with respect to entries of similar resolution. The Analysed column shows the number of residues for which the sidechain conformation was analysed, and the total number of residues.

Mol	Chain	Analysed	Rotameric	Outliers	Percentiles	
1	A	354/377 (94%)	345 (98%)	9 (2%)	60	59
1	B	353/377 (94%)	346 (98%)	7 (2%)	68	69
All	All	707/754 (94%)	691 (98%)	16 (2%)	63	63

5 of 16 residues with a non-rotameric sidechain are listed below:

Mol	Chain	Res	Type
1	A	419	ILE
1	A	468	ASN
1	B	259	GLN
1	A	376	ASN
1	B	260	ASP

Some sidechains can be flipped to improve hydrogen bonding and reduce clashes. 5 of 18 such sidechains are listed below:

Mol	Chain	Res	Type
1	A	376	ASN
1	A	413	GLN
1	B	225	ASN

*Continued on next page...*

*Continued from previous page...*

Mol	Chain	Res	Type
1	A	285	ASN
1	A	340	ASN

### 5.3.3 RNA ⓘ

There are no RNA chains in this entry.

## 5.4 Non-standard residues in protein, DNA, RNA chains ⓘ

There are no non-standard protein/DNA/RNA residues in this entry.

## 5.5 Carbohydrates ⓘ

There are no carbohydrates in this entry.

## 5.6 Ligand geometry ⓘ

Of 15 ligands modelled in this entry, 1 is monoatomic - leaving 14 for Mogul analysis.

In the following table, the Counts columns list the number of bonds (or angles) for which Mogul statistics could be retrieved, the number of bonds (or angles) that are observed in the model and the number of bonds (or angles) that are defined in the chemical component dictionary. The Link column lists molecule types, if any, to which the group is linked. The Z score for a bond length (or angle) is the number of standard deviations the observed value is removed from the expected value. A bond length (or angle) with  $|Z| > 2$  is considered an outlier worth inspection. RMSZ is the root-mean-square of all Z scores of the bond lengths (or angles).

Mol	Type	Chain	Res	Link	Bond lengths			Bond angles		
					Counts	RMSZ	# $ Z  > 2$	Counts	RMSZ	# $ Z  > 2$
5	HEM	A	1500	1	49,50,50	2.81	13 (26%)	46,82,82	1.63	10 (21%)
6	BHS	A	1610	-	18,18,18	1.59	3 (16%)	24,26,26	2.95	11 (45%)
7	ITU	A	1800	-	5,5,5	1.60	1 (20%)	5,5,5	1.63	1 (20%)
2	ACT	A	1850	-	1,3,3	2.66	1 (100%)	0,3,3	0.00	-
2	ACT	A	1860	-	1,3,3	1.62	0	0,3,3	0.00	-
8	GOL	A	1880	-	5,5,5	0.39	0	5,5,5	1.50	1 (20%)
3	CAC	A	950	1	2,2,4	0.44	0	0,1,6	0.00	-
5	HEM	B	2500	1	49,50,50	2.24	11 (22%)	46,82,82	1.34	8 (17%)
6	BHS	B	2610	-	18,18,18	1.68	4 (22%)	24,26,26	3.05	11 (45%)
7	ITU	B	2800	-	5,5,5	2.52	1 (20%)	5,5,5	1.75	1 (20%)

Mol	Type	Chain	Res	Link	Bond lengths			Bond angles		
					Counts	RMSZ	# Z  > 2	Counts	RMSZ	# Z  > 2
2	ACT	B	2850	-	1,3,3	3.53	1 (100%)	0,3,3	0.00	-
2	ACT	B	2860	-	1,3,3	1.92	0	0,3,3	0.00	-
8	GOL	B	2880	-	5,5,5	0.16	0	5,5,5	0.32	0
3	CAC	B	950	1	2,2,4	0.45	0	0,1,6	0.00	-

In the following table, the Chirals column lists the number of chiral outliers, the number of chiral centers analysed, the number of these observed in the model and the number defined in the chemical component dictionary. Similar counts are reported in the Torsion and Rings columns. '-' means no outliers of that kind were identified.

Mol	Type	Chain	Res	Link	Chirals	Torsions	Rings
5	HEM	A	1500	1	-	0/14/114/114	0/0/8/8
6	BHS	A	1610	-	-	0/8/17/17	0/0/2/2
7	ITU	A	1800	-	-	0/3/3/3	0/0/0/0
2	ACT	A	1850	-	-	0/0/0/0	0/0/0/0
2	ACT	A	1860	-	-	0/0/0/0	0/0/0/0
8	GOL	A	1880	-	-	0/4/4/4	0/0/0/0
3	CAC	A	950	1	-	0/0/0/0	0/0/0/0
5	HEM	B	2500	1	-	0/14/114/114	0/0/8/8
6	BHS	B	2610	-	-	0/8/17/17	0/0/2/2
7	ITU	B	2800	-	-	0/3/3/3	0/0/0/0
2	ACT	B	2850	-	-	0/0/0/0	0/0/0/0
2	ACT	B	2860	-	-	0/0/0/0	0/0/0/0
8	GOL	B	2880	-	-	0/4/4/4	0/0/0/0
3	CAC	B	950	1	-	0/0/0/0	0/0/0/0

The worst 5 of 35 bond length outliers are listed below:

Mol	Chain	Res	Type	Atoms	Z	Observed(Å)	Ideal(Å)
5	A	1500	HEM	C2B-C1B	12.89	1.47	1.44
5	B	2500	HEM	C2B-C1B	8.55	1.46	1.44
5	B	2500	HEM	CHB-C1B	5.56	1.43	1.35
5	A	1500	HEM	C3D-C2D	-5.54	1.34	1.43
7	B	2800	ITU	C3-S	5.42	1.81	1.75

The worst 5 of 43 bond angle outliers are listed below:

Mol	Chain	Res	Type	Atoms	Z	Observed(°)	Ideal(°)
6	B	2610	BHS	C4-C4A-C8A	8.24	122.19	114.56
6	B	2610	BHS	C7-C6-C1'	-7.69	101.79	113.66
6	A	1610	BHS	C7-C6-C1'	-7.63	101.88	113.66
6	A	1610	BHS	C4-C4A-C8A	7.46	121.47	114.56

*Continued on next page...*

*Continued from previous page...*

Mol	Chain	Res	Type	Atoms	Z	Observed(°)	Ideal(°)
5	A	1500	HEM	C3A-C4A-NA	4.94	113.14	109.41

There are no chirality outliers.

There are no torsion outliers.

There are no ring outliers.

## 5.7 Other polymers ⓘ

There are no such residues in this entry.

## 5.8 Polymer linkage issues

There are no chain breaks in this entry.

## 6 Fit of model and data ⓘ

### 6.1 Protein, DNA and RNA chains ⓘ

In the following table, the column labelled ‘#RSRZ> 2’ contains the number (and percentage) of RSRZ outliers, followed by percent RSRZ outliers for the chain as percentile scores relative to all X-ray entries and entries of similar resolution. The OWAB column contains the minimum, median, 95<sup>th</sup> percentile and maximum values of the occupancy-weighted average B-factor per residue. The column labelled ‘Q< 0.9’ lists the number of (and percentage) of residues with an average occupancy less than 0.9.

Mol	Chain	Analysed	<RSRZ>	#RSRZ>2	OWAB(Å <sup>2</sup> )	Q<0.9
1	A	416/444 (93%)	0.44	39 (9%) 9 8	32, 47, 89, 99	0
1	B	414/444 (93%)	0.52	32 (7%) 13 12	35, 52, 88, 99	0
All	All	830/888 (93%)	0.48	71 (8%) 11 10	32, 49, 89, 99	0

The worst 5 of 71 RSRZ outliers are listed below:

Mol	Chain	Res	Type	RSRZ
1	A	117	PRO	11.6
1	A	113	THR	11.1
1	A	111	LEU	11.0
1	B	118	GLY	11.0
1	B	113	THR	10.4

### 6.2 Non-standard residues in protein, DNA, RNA chains ⓘ

There are no non-standard protein/DNA/RNA residues in this entry.

### 6.3 Carbohydrates ⓘ

There are no carbohydrates in this entry.

### 6.4 Ligands ⓘ

In the following table, the Atoms column lists the number of modelled atoms in the group and the number defined in the chemical component dictionary. LLDF column lists the quality of electron density of the group with respect to its neighbouring residues in protein, DNA or RNA chains. The B-factors column lists the minimum, median, 95<sup>th</sup> percentile and maximum values of B factors of atoms in the group. The column labelled ‘Q< 0.9’ lists the number of atoms with occupancy less than 0.9.



Mol	Type	Chain	Res	Atoms	RSR	LLDF	B-factors( $\text{\AA}^2$ )	Q<0.9
2	ACT	B	2850	4/4	0.19	1.87	49,50,50,50	0
2	ACT	A	1850	4/4	0.17	1.29	50,50,51,52	0
6	BHS	B	2610	17/17	0.19	1.20	66,66,67,67	0
6	BHS	A	1610	17/17	0.19	0.99	63,65,66,67	0
5	HEM	B	2500	43/43	0.17	0.80	33,35,46,51	0
8	GOL	B	2880	6/6	0.15	0.68	61,65,66,68	0
5	HEM	A	1500	43/43	0.15	0.57	29,34,45,48	0
8	GOL	A	1880	6/6	0.15	0.50	63,64,65,65	0
3	CAC	A	950	3/5	0.11	0.39	69,69,69,75	0
7	ITU	A	1800	6/6	0.17	0.33	37,39,40,40	0
2	ACT	A	1860	4/4	0.11	0.27	52,52,53,54	0
3	CAC	B	950	3/5	0.16	0.02	85,85,85,89	0
7	ITU	B	2800	6/6	0.16	-0.03	44,45,46,47	0
2	ACT	B	2860	4/4	0.08	-1.26	55,55,55,56	0
4	ZN	A	900	1/1	0.03	-3.25	69,69,69,69	0

## 6.5 Other polymers ⓘ

There are no such residues in this entry.