



Full wwPDB X-ray Structure Validation Report ⓘ

Feb 28, 2014 – 01:29 PM GMT

PDB ID : 1DMK
Title : BOVINE ENDOTHELIAL NITRIC OXIDE SYNTHASE HEME DOMAIN
COMPLEXED WITH 4-AMINO-6-PHENYL-TETRAHYDROPTERIDINE
Authors : Kotsonis, P.; Frohlich, L.G.; Raman, C.S.; Li, H.; Berg, M.; Gerwig, R.;
Groehn, V.; Kang, Y.; Al-Masoudi, N.; Taghavi-Moghadam, S.; Mohr, D.;
Munch, U.; Schnabel, J.; Martasek, P.; Masters, B.S.; Strobel, H.; Poulos, T.;
Matter, H.; Pfleiderer, W.; Schmidt, H.H.
Deposited on : 1999-12-14
Resolution : 1.90 Å(reported)

This is a full wwPDB validation report for a publicly released PDB entry.
We welcome your comments at validation@mail.wwpdb.org
A user guide is available at <http://wwpdb.org/ValidationPDFNotes.html>

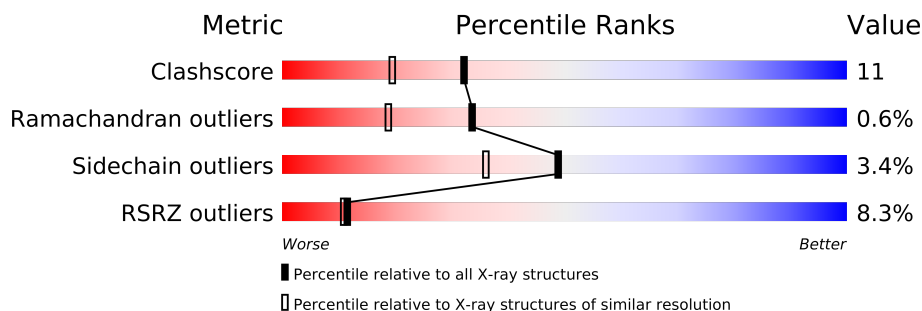
The following versions of software and data (see [references](#)) were used in the production of this report:

MolProbity : 4.02b-467
Mogul : 1.15 2013
Xtriage (Phenix) : dev-1323
EDS : stable22639
Percentile statistics : 21963
Refmac : 5.8.0049
CCP4 : 6.3.0 (Settle)
Ideal geometry (proteins) : Engh & Huber (2001)
Ideal geometry (DNA, RNA) : Parkinson et. al. (1996)
Validation Pipeline (wwPDB-VP) : stable22683

1 Overall quality at a glance

The reported resolution of this entry is 1.90 Å.

Percentile scores (ranging between 0-100) for global validation metrics of the entry are shown in the following graphic. The table shows the number of entries on which the scores are based.



Metric	Whole archive (#Entries)	Similar resolution (#Entries, resolution range(Å))
Clashscore	79885	4465 (1.90-1.90)
Ramachandran outliers	78287	4413 (1.90-1.90)
Sidechain outliers	78261	4414 (1.90-1.90)
RSRZ outliers	66119	3686 (1.90-1.90)

The table below summarises the geometric issues observed across the polymeric chains and their fit to the electron density. The red, orange, yellow and green segments on the lower bar indicate the fraction of residues that contain outliers for ≥ 3 , 2, 1 and 0 types of geometric quality criteria. The upper red bar (where present) indicates the fraction of residues that have poor fit to the electron density.

Mol	Chain	Length	Quality of chain
1	A	444	
1	B	444	

The following table lists non-polymeric compounds that are outliers for geometric or electron-density-fit criteria:

Mol	Type	Chain	Res	Geometry	Electron density
2	ACT	B	2855	-	X
3	CAC	B	950	-	X
7	ITU	B	2800	-	X

2 Entry composition i

There are 8 unique types of molecules in this entry. The entry contains 7232 atoms, of which 0 are hydrogen and 0 are deuterium.

In the tables below, the ZeroOcc column contains the number of atoms modelled with zero occupancy, the AltConf column contains the number of residues with at least one atom in alternate conformation and the Trace column contains the number of residues modelled with at most 2 atoms.

- Molecule 1 is a protein called NITRIC OXIDE SYNTHASE.

Mol	Chain	Residues	Atoms					ZeroOcc	AltConf	Trace
1	A	416	Total	C	N	O	S	0	0	0
			3302	2099	584	603	16			
1	B	414	Total	C	N	O	S	0	0	0
			3291	2092	582	601	16			

There are 2 discrepancies between the modelled and reference sequences:

Chain	Residue	Modelled	Actual	Comment	Reference
A	100	ARG	CYS	CONFLICT	UNP P29473
B	100	ARG	CYS	CONFLICT	UNP P29473

- Molecule 2 is ACETATE ION (three-letter code: ACT) (formula: C₂H₃O₂).



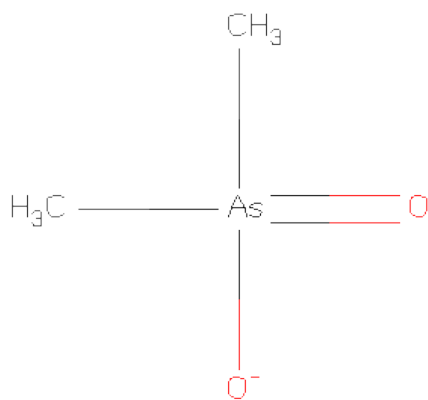
Mol	Chain	Residues	Atoms			ZeroOcc	AltConf
2	A	1	Total	C	O	0	0
			4	2	2		

Continued on next page...

Continued from previous page...

Mol	Chain	Residues	Atoms			ZeroOcc	AltConf
2	A	1	Total	C	O	0	0
			4	2	2		
2	A	1	Total	C	O	0	0
			4	2	2		
2	B	1	Total	C	O	0	0
			4	2	2		
2	B	1	Total	C	O	0	0
			4	2	2		
2	B	1	Total	C	O	0	0
			4	2	2		

- Molecule 3 is CACODYLATE ION (three-letter code: CAC) (formula: $C_2H_6AsO_2$).

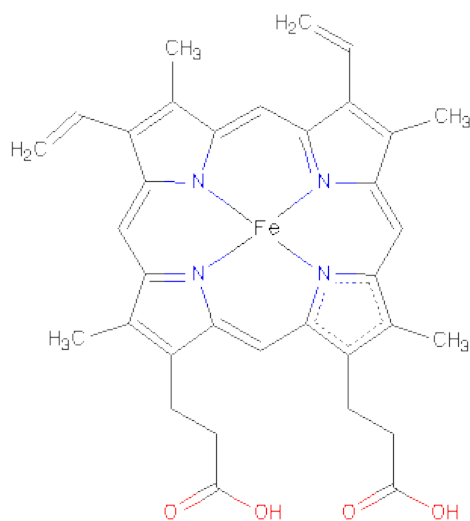


Mol	Chain	Residues	Atoms			ZeroOcc	AltConf
3	A	1	Total	As	C	0	0
			3	1	2		
3	B	1	Total	As	C	0	0
			3	1	2		

- Molecule 4 is ZINC ION (three-letter code: ZN) (formula: Zn).

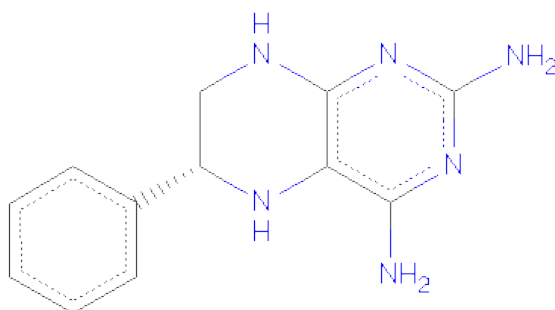
Mol	Chain	Residues	Atoms		ZeroOcc	AltConf
4	A	1	Total	Zn	0	0
			1	1		

- Molecule 5 is PROTOPORPHYRIN IX CONTAINING FE (three-letter code: HEM) (formula: $C_{34}H_{32}FeN_4O_4$).



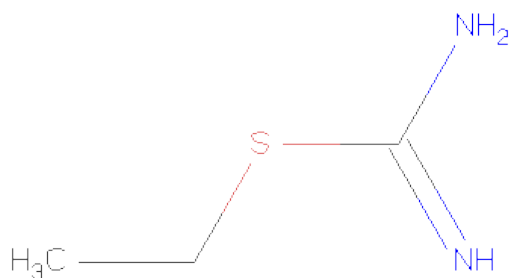
Mol	Chain	Residues	Atoms					ZeroOcc	AltConf
5	A	1	Total	C	Fe	N	O	0	0
			43	34	1	4	4		
5	B	1	Total	C	Fe	N	O	0	0
			43	34	1	4	4		

- Molecule 6 is 2,4-DIAMINO-6-PHENYL-5,6,7,8,-TETRAHYDROPTERIDINE (three-letter code: AP6) (formula: $C_{12}H_{14}N_6$).



Mol	Chain	Residues	Atoms			ZeroOcc	AltConf
6	A	1	Total	C	N	0	0
			18	12	6		
6	B	1	Total	C	N	0	0
			18	12	6		

- Molecule 7 is ETHYLISOTHIOUREA (three-letter code: ITU) (formula: $C_3H_8N_2S$).



Mol	Chain	Residues	Atoms				ZeroOcc	AltConf
7	A	1	Total	C	N	S	0	0
			6	3	2	1		
7	B	1	Total	C	N	S	0	0
			6	3	2	1		

- Molecule 8 is water.

Mol	Chain	Residues	Atoms		ZeroOcc	AltConf
8	A	245	Total	O	0	0
			245	245		
8	B	225	Total	O	0	0
			225	225		

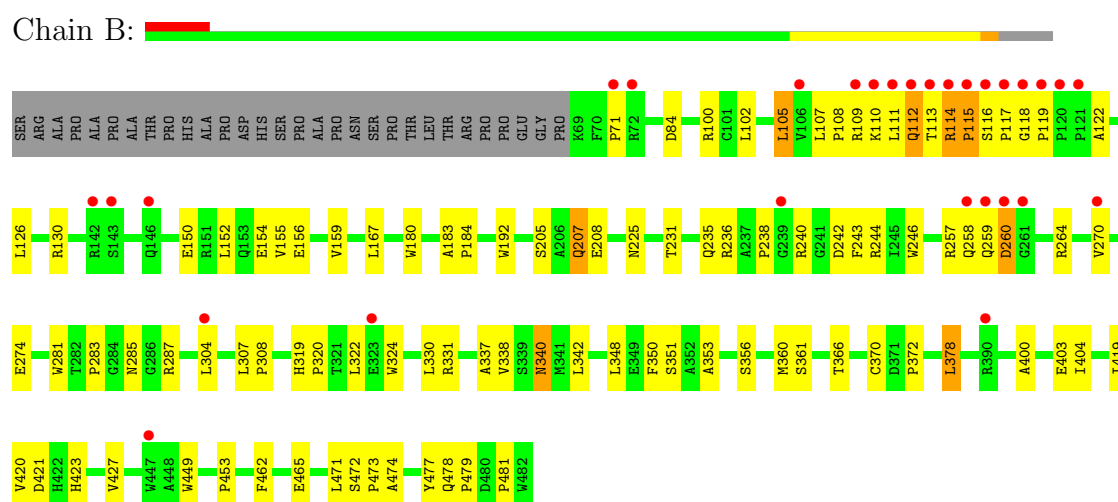
3 Residue-property plots

These plots are drawn for all protein, RNA and DNA chains in the entry. The first graphic for a chain summarises the proportions of errors displayed in the second graphic. The second graphic shows the sequence view annotated by issues in geometry and electron density. Residues are color-coded according to the number of geometric quality criteria for which they contain at least one outlier: green = 0, yellow = 1, orange = 2 and red = 3 or more. A red dot above a residue indicates a poor fit to the electron density ($RSRZ > 2$). Stretches of 2 or more consecutive residues without any outlier are shown as a green connector. Residues present in the sample, but not in the model, are shown in grey.

• Molecule 1: NITRIC OXIDE SYNTHASE



• Molecule 1: NITRIC OXIDE SYNTHASE



4 Data and refinement statistics

Property	Value	Source
Space group	P 21 21 21	Depositor
Cell constants a, b, c, α , β , γ	58.07Å 106.11Å 156.21Å 90.00° 90.00° 90.00°	Depositor
Resolution (Å)	19.93 – 1.90 48.43 – 1.90	Depositor EDS
% Data completeness (in resolution range)	89.2 (19.93-1.90) 79.2 (48.43-1.90)	Depositor EDS
R_{merge}	0.05	Depositor
R_{sym}	(Not available)	Depositor
$\langle I/\sigma(I) \rangle$ ¹	2.10 (at 1.90Å)	Xtriage
Refinement program	CNS 0.9	Depositor
R, R_{free}	0.225 , 0.264 0.213 , (Not available)	Depositor DCC
R_{free} test set	No test flags present.	DCC
Wilson B-factor (Å ²)	31.8	Xtriage
Anisotropy	0.413	Xtriage
Bulk solvent k_{sol} (e/Å ³), B_{sol} (Å ²)	0.37 , 48.8	EDS
Estimated twinning fraction	No twinning to report.	Xtriage
L-test for twinning	$\langle L \rangle = 0.48$, $\langle L^2 \rangle = 0.31$	Xtriage
Outliers	0 of 68181 reflections	Xtriage
F_o, F_c correlation	0.96	EDS
Total number of atoms	7232	wwPDB-VP
Average B, all atoms (Å ²)	45.0	wwPDB-VP

Xtriage's analysis on translational NCS is as follows: *The largest off-origin peak in the Patterson function is 3.54% of the height of the origin peak. No significant pseudotranslation is detected.*

¹Intensities estimated from amplitudes.

5 Model quality i

5.1 Standard geometry i

Bond lengths and bond angles in the following residue types are not validated in this section: ZN, AP6, ACT, CAC, HEM, ITU

The Z score for a bond length (or angle) is the number of standard deviations the observed value is removed from the expected value. A bond length (or angle) with $|Z| > 5$ is considered an outlier worth inspection. RMSZ is the root-mean-square of all Z scores of the bond lengths (or angles).

Mol	Chain	Bond lengths		Bond angles	
		RMSZ	$\# Z > 5$	RMSZ	$\# Z > 5$
1	A	0.37	0/3397	0.63	1/4631 (0.0%)
1	B	0.36	0/3385	0.63	2/4614 (0.0%)
All	All	0.37	0/6782	0.63	3/9245 (0.0%)

There are no bond length outliers.

All (3) bond angle outliers are listed below:

Mol	Chain	Res	Type	Atoms	Z	Observed(°)	Ideal(°)
1	A	360	MET	N-CA-C	-5.96	94.91	111.00
1	B	360	MET	N-CA-C	-5.26	96.80	111.00
1	B	243	PHE	N-CA-C	-5.08	97.28	111.00

There are no chirality outliers.

There are no planarity outliers.

5.2 Close contacts i

In the following table, the Non-H and H(model) columns list the number of non-hydrogen atoms and hydrogen atoms in the chain respectively. The H(added) column lists the number of hydrogens added by MolProbity. The Clashes column lists the number of clashes within the asymmetric unit, and the number in parentheses is this value normalized per 1000 atoms of the molecule in the chain. The Symm-Clashes column gives symmetry related clashes, in the same way as for the Clashes column.

Mol	Chain	Non-H	H(model)	H(added)	Clashes	Symm-Clashes
1	A	3302	0	3215	72	0
1	B	3291	0	3205	84	0
2	A	12	0	9	0	0
2	B	16	0	12	1	0

Continued on next page...

Continued from previous page...

Mol	Chain	Non-H	H(model)	H(added)	Clashes	Symm-Clashes
3	A	3	0	0	0	0
3	B	3	0	0	0	0
4	A	1	0	0	0	0
5	A	43	0	30	0	0
5	B	43	0	30	0	0
6	A	18	0	14	2	0
6	B	18	0	14	3	0
7	A	6	0	7	1	0
7	B	6	0	7	1	0
8	A	245	0	0	4	0
8	B	225	0	0	2	0
All	All	7232	0	6543	151	0

Clashscore is defined as the number of clashes calculated for the entry per 1000 atoms (including hydrogens) of the entry. The overall clashscore for this entry is 11.

All (151) close contacts within the same asymmetric unit are listed below.

Atom-1	Atom-2	Distance(Å)	Clash(Å)
1:A:115:PRO:HD3	1:A:479:PRO:HG2	1.21	1.17
1:B:108:PRO:HB3	1:B:111:LEU:HD13	1.52	0.90
1:A:105:LEU:HB2	1:A:108:PRO:HG3	1.54	0.88
1:B:259:GLN:HG2	1:B:260:ASP:H	1.43	0.83
1:B:114:ARG:HH11	1:B:114:ARG:HA	1.47	0.77
1:A:126:LEU:HD11	1:A:156:GLU:HB3	1.70	0.73
1:A:240:ARG:HD3	1:A:298:PRO:HB3	1.71	0.73
1:A:281:TRP:HB2	1:A:304:LEU:HD21	1.71	0.72
1:B:281:TRP:HB2	1:B:304:LEU:HD21	1.71	0.71
1:B:259:GLN:HG2	1:B:260:ASP:N	2.05	0.71
1:B:112:GLN:HG3	1:B:478:GLN:HA	1.72	0.69
1:B:114:ARG:HH11	1:B:115:PRO:HD3	1.58	0.68
1:A:421:ASP:HB2	8:A:2038:HOH:O	1.95	0.67
1:A:121:PRO:HB2	1:A:124:GLN:HB3	1.78	0.66
1:A:115:PRO:HD3	1:A:479:PRO:CG	2.14	0.66
1:B:114:ARG:HD3	1:B:115:PRO:HD2	1.78	0.65
1:A:274:GLU:O	1:A:278:GLN:HG3	1.97	0.65
1:A:111:LEU:HD22	1:A:476:ARG:NH1	2.13	0.63
1:A:378:LEU:HB2	8:A:1979:HOH:O	1.97	0.62
1:A:69:LYS:HG2	1:A:69:LYS:O	1.99	0.62
1:B:150:GLU:O	1:B:154:GLU:HG3	2.01	0.60
1:B:130:ARG:HG3	1:B:130:ARG:HH11	1.66	0.60
1:A:111:LEU:HD21	1:A:470:ILE:HD13	1.83	0.60
1:A:119:PRO:HG3	1:A:238:PRO:HB3	1.84	0.60

Continued on next page...

Continued from previous page...

Atom-1	Atom-2	Distance(Å)	Clash(Å)
1:B:108:PRO:CB	1:B:111:LEU:HB2	2.31	0.59
1:B:114:ARG:NH1	1:B:115:PRO:HD3	2.17	0.59
1:A:111:LEU:HD21	1:A:470:ILE:HG21	1.84	0.59
1:B:370:CYS:SG	1:B:378:LEU:HD13	2.42	0.59
1:B:322:LEU:HD13	1:B:324:TRP:CZ2	2.37	0.59
1:B:264:ARG:NH2	1:B:285:ASN:O	2.35	0.59
1:A:340:ASN:HD22	1:A:340:ASN:H	1.51	0.59
1:A:111:LEU:CD2	1:A:470:ILE:HD13	2.34	0.58
1:B:112:GLN:HE21	1:B:477:TYR:C	2.08	0.58
1:A:108:PRO:HG2	8:A:1912:HOH:O	2.04	0.57
1:A:240:ARG:HD3	1:A:298:PRO:CB	2.35	0.57
1:B:236:ARG:HD3	1:B:351:SER:HB3	1.87	0.57
1:B:378:LEU:HB2	8:B:2976:HOH:O	2.05	0.56
1:B:114:ARG:NH1	1:B:114:ARG:HA	2.18	0.56
1:A:317:LEU:HG	1:A:331:ARG:HA	1.87	0.56
1:A:449:TRP:HA	6:A:1660:AP6:N1	2.20	0.56
1:B:112:GLN:NE2	1:B:477:TYR:C	2.59	0.55
1:B:102:LEU:HB3	1:B:105:LEU:HG	1.87	0.55
1:B:366:THR:O	1:B:370:CYS:HB2	2.07	0.55
6:A:1660:AP6:H6	1:B:462:PHE:CE2	2.42	0.55
1:B:116:SER:O	1:B:238:PRO:HA	2.07	0.55
1:A:322:LEU:HD13	1:A:324:TRP:CZ2	2.41	0.55
1:B:257:ARG:HH11	1:B:257:ARG:HG3	1.72	0.54
1:B:449:TRP:HA	6:B:2660:AP6:N1	2.22	0.54
1:B:244:ARG:NH2	1:B:481:PRO:HD3	2.23	0.54
1:A:115:PRO:O	1:A:117:PRO:HD3	2.08	0.54
1:B:114:ARG:HD3	1:B:115:PRO:CD	2.37	0.54
1:B:152:LEU:O	1:B:156:GLU:HG3	2.08	0.53
1:B:130:ARG:HG3	1:B:152:LEU:HD22	1.91	0.53
1:B:236:ARG:HD2	1:B:242:ASP:CG	2.29	0.53
1:A:108:PRO:HD2	8:A:2083:HOH:O	2.09	0.53
1:A:115:PRO:C	1:A:117:PRO:HD3	2.30	0.53
1:B:400:ALA:O	1:B:404:ILE:HG13	2.09	0.53
1:B:111:LEU:O	1:B:112:GLN:O	2.28	0.52
1:B:205:SER:OG	1:B:208:GLU:HG3	2.10	0.52
1:A:338:VAL:HG23	7:A:1800:ITU:H11	1.92	0.52
1:B:118:GLY:C	1:B:238:PRO:HB3	2.29	0.52
1:A:105:LEU:CB	1:A:108:PRO:HG3	2.34	0.51
1:A:462:PHE:CE2	6:B:2660:AP6:H6	2.46	0.51
1:A:168:ARG:HB2	1:A:171:GLU:HG3	1.93	0.51
1:B:340:ASN:HD22	1:B:340:ASN:C	2.12	0.51
1:A:191:GLN:HE22	1:A:194:LYS:NZ	2.09	0.51

Continued on next page...

Continued from previous page...

Atom-1	Atom-2	Distance(Å)	Clash(Å)
1:B:337:ALA:HB2	1:B:356:SER:HB3	1.93	0.51
1:B:108:PRO:HB3	1:B:111:LEU:HB2	1.93	0.51
1:A:105:LEU:HD22	1:B:465:GLU:HB3	1.91	0.50
1:B:113:THR:HG21	1:B:342:LEU:CD1	2.41	0.50
1:B:361:SER:OG	1:B:421:ASP:HA	2.11	0.50
1:A:114:ARG:HD2	1:A:479:PRO:HG3	1.92	0.50
1:A:264:ARG:HG3	1:A:264:ARG:HH11	1.76	0.50
1:B:264:ARG:NH1	1:B:287:ARG:HG3	2.26	0.50
1:A:340:ASN:HD22	1:A:340:ASN:N	2.10	0.49
1:A:119:PRO:HG3	1:A:238:PRO:CB	2.42	0.49
1:B:180:TRP:CE3	1:B:192:TRP:HA	2.48	0.49
1:A:270:VAL:O	1:A:274:GLU:HG3	2.12	0.49
1:A:472:SER:HA	1:A:473:PRO:C	2.33	0.48
1:B:112:GLN:HE22	1:B:477:TYR:HB3	1.79	0.48
1:B:126:LEU:HD11	1:B:156:GLU:HA	1.96	0.48
1:B:236:ARG:HD2	1:B:242:ASP:OD2	2.13	0.48
1:B:472:SER:HA	1:B:473:PRO:C	2.34	0.48
1:A:366:THR:O	1:A:370:CYS:HB2	2.14	0.48
1:B:109:ARG:HG3	1:B:110:LYS:HG3	1.95	0.48
1:B:419:ILE:HG13	1:B:420:VAL:N	2.28	0.48
1:A:111:LEU:CD2	1:A:476:ARG:NH1	2.77	0.47
1:B:281:TRP:O	1:B:283:PRO:HD3	2.14	0.47
1:A:129:ALA:O	1:A:133:ILE:HG12	2.15	0.47
1:A:105:LEU:CD2	1:B:465:GLU:HB3	2.45	0.46
1:A:152:LEU:O	1:A:156:GLU:HG2	2.15	0.46
1:A:210:PHE:HE2	1:A:307:LEU:HD23	1.79	0.46
1:A:111:LEU:O	1:A:112:GLN:C	2.53	0.46
1:A:74:LYS:O	1:A:465:GLU:HG3	2.16	0.46
1:A:123:GLU:OE1	1:A:123:GLU:HA	2.16	0.46
1:A:234:PRO:HB2	1:A:243:PHE:CE1	2.51	0.46
1:A:240:ARG:HD2	1:A:241:GLY:O	2.16	0.45
1:B:71:PRO:HG2	1:B:84:ASP:HB3	1.97	0.45
1:A:264:ARG:HG3	1:A:264:ARG:NH1	2.32	0.45
1:A:111:LEU:HD21	1:A:470:ILE:CG2	2.45	0.45
1:B:112:GLN:NE2	1:B:477:TYR:CB	2.80	0.45
1:A:194:LYS:HE3	1:A:194:LYS:HB2	1.78	0.45
1:B:112:GLN:HE22	1:B:477:TYR:CB	2.30	0.45
1:A:115:PRO:CD	1:A:479:PRO:HG2	2.15	0.45
1:B:130:ARG:CG	1:B:130:ARG:HH11	2.29	0.44
1:A:340:ASN:ND2	1:A:340:ASN:H	2.14	0.44
2:B:2855:ACT:CH3	6:B:2660:AP6:HN42	2.30	0.44
1:B:264:ARG:HH11	1:B:287:ARG:HG3	1.82	0.44

Continued on next page...

Continued from previous page...

Atom-1	Atom-2	Distance(Å)	Clash(Å)
1:A:236:ARG:HD3	1:A:242:ASP:CG	2.36	0.44
1:B:235:GLN:HB3	1:B:350:PHE:CE1	2.52	0.44
1:B:231:THR:O	1:B:353:ALA:HA	2.16	0.44
1:B:112:GLN:CG	1:B:478:GLN:HA	2.45	0.44
1:B:259:GLN:H	1:B:259:GLN:CD	2.21	0.44
1:B:258:GLN:HB3	1:B:259:GLN:NE2	2.33	0.44
1:A:465:GLU:HB3	1:B:105:LEU:HD22	2.00	0.44
1:A:187:VAL:O	1:A:187:VAL:HG22	2.18	0.44
1:B:122:ALA:O	1:B:126:LEU:HB2	2.18	0.43
1:B:257:ARG:NH1	1:B:257:ARG:HG3	2.33	0.43
1:A:157:ALA:O	1:A:160:ALA:HB3	2.18	0.43
1:A:69:LYS:CG	1:A:69:LYS:O	2.66	0.43
1:B:338:VAL:HG23	7:B:2800:ITU:H11	2.01	0.43
1:B:207:GLN:HB2	8:B:3026:HOH:O	2.19	0.43
1:B:180:TRP:CZ3	1:B:192:TRP:HA	2.53	0.43
1:B:246:TRP:CD1	1:B:481:PRO:HG3	2.55	0.42
1:B:319:HIS:NE2	1:B:403:GLU:OE2	2.48	0.42
1:B:423:HIS:O	1:B:427:VAL:HG23	2.20	0.42
1:A:246:TRP:CZ2	1:A:302:PRO:HG2	2.55	0.42
1:B:116:SER:N	1:B:117:PRO:CD	2.82	0.42
1:A:109:ARG:O	1:A:110:LYS:HD2	2.20	0.42
1:B:119:PRO:HA	1:B:238:PRO:CG	2.50	0.42
1:B:307:LEU:HA	1:B:308:PRO:HD3	1.95	0.41
1:A:77:GLU:HG3	1:B:372:PRO:HG2	2.02	0.41
1:A:226:LEU:HD12	1:A:226:LEU:N	2.36	0.41
1:B:183:ALA:HA	1:B:184:PRO:HD3	1.85	0.41
1:B:113:THR:HG21	1:B:342:LEU:HD11	2.02	0.41
1:B:167:LEU:HG	1:B:348:LEU:HD12	2.03	0.41
1:B:471:LEU:O	1:B:474:ALA:HB2	2.20	0.41
1:B:112:GLN:HG2	1:B:479:PRO:HD3	2.03	0.41
1:A:92:GLN:HB2	1:A:92:GLN:HE21	1.61	0.41
1:A:342:LEU:HD23	1:A:342:LEU:C	2.41	0.41
1:A:293:LEU:HD11	1:A:307:LEU:HD21	2.03	0.41
1:B:319:HIS:CG	1:B:320:PRO:HD2	2.55	0.41
1:A:231:THR:O	1:A:353:ALA:HA	2.21	0.41
1:A:76:TRP:HH2	1:B:107:LEU:HD11	1.86	0.41
1:B:270:VAL:O	1:B:274:GLU:HG3	2.21	0.41
1:A:319:HIS:CG	1:A:320:PRO:HD2	2.56	0.41
1:A:244:ARG:NH2	1:A:481:PRO:HD3	2.36	0.40
1:A:457:SER:OG	1:B:453:PRO:HB2	2.22	0.40
1:A:285:ASN:C	1:A:285:ASN:HD22	2.23	0.40
1:B:155:VAL:O	1:B:159:VAL:HG23	2.21	0.40

Continued on next page...

Continued from previous page...

Atom-1	Atom-2	Distance(Å)	Clash(Å)
1:A:117:PRO:O	1:A:118:GLY:C	2.58	0.40

There are no symmetry-related clashes.

5.3 Torsion angles

5.3.1 Protein backbone ⓘ

In the following table, the Percentiles column shows the percent Ramachandran outliers of the chain as a percentile score with respect to all X-ray entries followed by that with respect to entries of similar resolution. The Analysed column shows the number of residues for which the backbone conformation was analysed, and the total number of residues.

Mol	Chain	Analysed	Favoured	Allowed	Outliers	Percentiles	
1	A	414/444 (93%)	388 (94%)	24 (6%)	2 (0%)	38	23
1	B	412/444 (93%)	388 (94%)	21 (5%)	3 (1%)	30	15
All	All	826/888 (93%)	776 (94%)	45 (5%)	5 (1%)	33	19

All (5) Ramachandran outliers are listed below:

Mol	Chain	Res	Type
1	A	117	PRO
1	B	112	GLN
1	A	112	GLN
1	B	260	ASP
1	B	115	PRO

5.3.2 Protein sidechains ⓘ

In the following table, the Percentiles column shows the percent sidechain outliers of the chain as a percentile score with respect to all X-ray entries followed by that with respect to entries of similar resolution. The Analysed column shows the number of residues for which the sidechain conformation was analysed, and the total number of residues.

Mol	Chain	Analysed	Rotameric	Outliers	Percentiles	
1	A	354/377 (94%)	340 (96%)	14 (4%)	42	29
1	B	353/377 (94%)	343 (97%)	10 (3%)	56	45
All	All	707/754 (94%)	683 (97%)	24 (3%)	49	36

All (24) residues with a non-rotameric sidechain are listed below:

Mol	Chain	Res	Type
1	A	92	GLN
1	A	100	ARG
1	A	124	GLN
1	A	125	LEU
1	A	126	LEU
1	A	194	LYS
1	A	236	ARG
1	A	259	GLN
1	A	285	ASN
1	A	311	LEU
1	A	340	ASN
1	A	376	ASN
1	A	390	ARG
1	A	468	ASN
1	B	100	ARG
1	B	105	LEU
1	B	114	ARG
1	B	207	GLN
1	B	225	ASN
1	B	240	ARG
1	B	330	LEU
1	B	331	ARG
1	B	340	ASN
1	B	378	LEU

Some sidechains can be flipped to improve hydrogen bonding and reduce clashes. All (17) such sidechains are listed below:

Mol	Chain	Res	Type
1	A	91	GLN
1	A	92	GLN
1	A	112	GLN
1	A	191	GLN
1	A	258	GLN
1	A	278	GLN
1	A	285	ASN
1	A	340	ASN
1	A	376	ASN
1	A	413	GLN
1	A	468	ASN
1	B	112	GLN
1	B	191	GLN

Continued on next page...

Continued from previous page...

Mol	Chain	Res	Type
1	B	222	ASN
1	B	225	ASN
1	B	340	ASN
1	B	405	ASN

5.3.3 RNA ⓘ

There are no RNA chains in this entry.

5.4 Non-standard residues in protein, DNA, RNA chains ⓘ

There are no non-standard protein/DNA/RNA residues in this entry.

5.5 Carbohydrates ⓘ

There are no carbohydrates in this entry.

5.6 Ligand geometry ⓘ

Of 16 ligands modelled in this entry, 1 is monoatomic - leaving 15 for Mogul analysis.

In the following table, the Counts columns list the number of bonds (or angles) for which Mogul statistics could be retrieved, the number of bonds (or angles) that are observed in the model and the number of bonds (or angles) that are defined in the chemical component dictionary. The Link column lists molecule types, if any, to which the group is linked. The Z score for a bond length (or angle) is the number of standard deviations the observed value is removed from the expected value. A bond length (or angle) with $|Z| > 2$ is considered an outlier worth inspection. RMSZ is the root-mean-square of all Z scores of the bond lengths (or angles).

Mol	Type	Chain	Res	Link	Bond lengths			Bond angles		
					Counts	RMSZ	$\# Z > 2$	Counts	RMSZ	$\# Z > 2$
5	HEM	A	1500	1	49,50,50	2.55	15 (30%)	46,82,82	1.46	8 (17%)
6	AP6	A	1660	-	20,20,20	3.70	8 (40%)	28,28,28	2.72	13 (46%)
7	ITU	A	1800	-	5,5,5	3.17	1 (20%)	5,5,5	2.15	1 (20%)
2	ACT	A	1850	-	1,3,3	3.32	1 (100%)	0,3,3	0.00	-
2	ACT	A	1855	-	1,3,3	1.92	0	0,3,3	0.00	-
2	ACT	A	1860	-	1,3,3	2.47	1 (100%)	0,3,3	0.00	-
3	CAC	A	950	1	2,2,4	0.49	0	0,1,6	0.00	-
5	HEM	B	2500	1	49,50,50	2.06	12 (24%)	46,82,82	1.35	7 (15%)

Mol	Type	Chain	Res	Link	Bond lengths			Bond angles		
					Counts	RMSZ	# Z > 2	Counts	RMSZ	# Z > 2
6	AP6	B	2660	-	20,20,20	3.59	6 (30%)	28,28,28	2.75	13 (46%)
7	ITU	B	2800	-	5,5,5	2.05	1 (20%)	5,5,5	2.01	1 (20%)
2	ACT	B	2850	-	1,3,3	3.07	1 (100%)	0,3,3	0.00	-
2	ACT	B	2855	-	1,3,3	2.91	1 (100%)	0,3,3	0.00	-
2	ACT	B	2860	-	1,3,3	2.15	1 (100%)	0,3,3	0.00	-
2	ACT	B	2870	-	1,3,3	1.53	0	0,3,3	0.00	-
3	CAC	B	950	1	2,2,4	0.50	0	0,1,6	0.00	-

In the following table, the Chirals column lists the number of chiral outliers, the number of chiral centers analysed, the number of these observed in the model and the number defined in the chemical component dictionary. Similar counts are reported in the Torsion and Rings columns. '-' means no outliers of that kind were identified.

Mol	Type	Chain	Res	Link	Chirals	Torsions	Rings
5	HEM	A	1500	1	-	0/14/114/114	0/0/8/8
6	AP6	A	1660	-	-	0/4/13/13	0/1/3/3
7	ITU	A	1800	-	-	0/3/3/3	0/0/0/0
2	ACT	A	1850	-	-	0/0/0/0	0/0/0/0
2	ACT	A	1855	-	-	0/0/0/0	0/0/0/0
2	ACT	A	1860	-	-	0/0/0/0	0/0/0/0
3	CAC	A	950	1	-	0/0/0/0	0/0/0/0
5	HEM	B	2500	1	-	0/14/114/114	0/0/8/8
6	AP6	B	2660	-	-	2/4/13/13	0/1/3/3
7	ITU	B	2800	-	-	0/3/3/3	0/0/0/0
2	ACT	B	2850	-	-	0/0/0/0	0/0/0/0
2	ACT	B	2855	-	-	0/0/0/0	0/0/0/0
2	ACT	B	2860	-	-	0/0/0/0	0/0/0/0
2	ACT	B	2870	-	-	0/0/0/0	0/0/0/0
3	CAC	B	950	1	-	0/0/0/0	0/0/0/0

All (48) bond length outliers are listed below:

Mol	Chain	Res	Type	Atoms	Z	Observed(Å)	Ideal(Å)
6	B	2660	AP6	C12-C11	10.75	1.57	1.39
6	A	1660	AP6	C12-C11	10.72	1.57	1.39
5	A	1500	HEM	C2B-C1B	10.20	1.47	1.44
6	A	1660	AP6	C2-N1	7.32	1.49	1.35
6	B	2660	AP6	C2-N1	7.23	1.49	1.35
7	A	1800	ITU	C3-S	6.84	1.82	1.75
5	A	1500	HEM	C2D-C1D	6.21	1.46	1.44
6	A	1660	AP6	C4-N4	5.26	1.47	1.34

Continued on next page...

Continued from previous page...

Mol	Chain	Res	Type	Atoms	Z	Observed(Å)	Ideal(Å)
6	B	2660	AP6	C4-N4	5.05	1.47	1.34
6	A	1660	AP6	C4-N3	4.86	1.42	1.35
6	B	2660	AP6	C4-N3	4.74	1.42	1.35
5	B	2500	HEM	C3B-C2B	-4.66	1.35	1.43
5	A	1500	HEM	C3D-C2D	-4.65	1.35	1.43
5	B	2500	HEM	C3C-C2C	-4.62	1.35	1.43
5	B	2500	HEM	C2B-C1B	4.58	1.45	1.44
7	B	2800	ITU	C3-S	4.31	1.80	1.75
5	B	2500	HEM	CHA-C4D	4.23	1.41	1.35
6	A	1660	AP6	C6-N5	-4.16	1.42	1.45
5	B	2500	HEM	C3D-C2D	-4.15	1.36	1.43
5	B	2500	HEM	C3D-C4D	4.04	1.45	1.44
5	A	1500	HEM	C3B-C2B	-3.97	1.36	1.43
6	B	2660	AP6	C6-N5	-3.96	1.42	1.45
5	A	1500	HEM	C3B-C4B	3.93	1.49	1.44
5	B	2500	HEM	C4A-C3A	3.88	1.45	1.40
5	A	1500	HEM	C4A-C3A	3.59	1.44	1.40
5	A	1500	HEM	C4C-NC	3.54	1.43	1.38
5	B	2500	HEM	CHB-C1B	3.49	1.40	1.35
5	A	1500	HEM	C4A-NA	3.44	1.43	1.36
5	B	2500	HEM	C2D-C1D	-3.41	1.43	1.44
5	A	1500	HEM	CHA-C4D	3.35	1.40	1.35
2	A	1850	ACT	CH3-C	3.32	1.53	1.48
2	B	2850	ACT	CH3-C	3.07	1.53	1.48
2	B	2855	ACT	CH3-C	2.91	1.53	1.48
5	A	1500	HEM	C3C-C2C	-2.89	1.38	1.43
5	A	1500	HEM	CHC-C1C	2.81	1.41	1.36
6	A	1660	AP6	C10-N1	2.60	1.39	1.34
5	A	1500	HEM	CHB-C1B	2.59	1.39	1.35
2	A	1860	ACT	CH3-C	2.47	1.52	1.48
6	A	1660	AP6	C2-N3	2.46	1.40	1.35
5	A	1500	HEM	FE-NA	2.46	2.03	1.92
5	B	2500	HEM	CMD-C2D	2.40	1.54	1.47
5	A	1500	HEM	CMC-C2C	2.36	1.54	1.47
5	B	2500	HEM	FE-NA	2.31	2.02	1.92
5	A	1500	HEM	CHD-C4C	2.29	1.40	1.36
6	B	2660	AP6	C2-N3	2.25	1.39	1.35
5	B	2500	HEM	CMB-C2B	2.18	1.54	1.47
2	B	2860	ACT	CH3-C	2.15	1.51	1.48
6	A	1660	AP6	C14-C15	2.00	1.43	1.37

All (43) bond angle outliers are listed below:

Mol	Chain	Res	Type	Atoms	Z	Observed(°)	Ideal(°)
6	A	1660	AP6	C2-N3-C4	8.18	126.24	116.96
6	B	2660	AP6	C2-N3-C4	7.96	126.00	116.96
6	B	2660	AP6	N3-C2-N1	-5.98	115.34	125.55
6	A	1660	AP6	N3-C2-N1	-5.86	115.54	125.55
7	A	1800	ITU	C2-S-C3	4.75	109.75	101.82
7	B	2800	ITU	C2-S-C3	4.39	109.15	101.82
6	B	2660	AP6	N4-C4-N3	3.90	122.55	116.88
5	A	1500	HEM	C3B-C4B-NB	-3.82	111.26	114.00
6	A	1660	AP6	N4-C4-N3	3.66	122.19	116.88
6	A	1660	AP6	C4-C9-C10	3.57	123.68	117.50
5	B	2500	HEM	CBA-CAA-C2A	-3.54	106.45	112.69
5	A	1500	HEM	C3A-C4A-NA	3.43	112.00	109.41
6	B	2660	AP6	C4-C9-C10	3.35	123.30	117.50
6	B	2660	AP6	N2-C2-N3	3.31	122.90	117.19
6	B	2660	AP6	C2-N1-C10	3.24	122.01	114.63
5	B	2500	HEM	C4C-NC-C1C	-3.18	102.23	105.53
6	B	2660	AP6	C7-C6-N5	3.14	113.03	108.90
6	A	1660	AP6	N2-C2-N3	3.10	122.54	117.19
6	A	1660	AP6	C2-N1-C10	3.09	121.66	114.63
5	A	1500	HEM	C4A-NA-C1A	-3.01	102.80	106.76
6	A	1660	AP6	C7-C6-N5	2.85	112.64	108.90
6	A	1660	AP6	C7-N8-C10	-2.85	118.12	121.36
5	B	2500	HEM	C3B-C4B-NB	-2.79	112.00	114.00
6	A	1660	AP6	N2-C2-N1	2.73	121.91	117.19
5	A	1500	HEM	C4C-NC-C1C	-2.73	102.69	105.53
6	B	2660	AP6	C7-N8-C10	-2.73	118.26	121.36
5	B	2500	HEM	C3A-C4A-NA	2.71	111.46	109.41
6	B	2660	AP6	C9-N5-C6	-2.66	113.02	119.19
6	B	2660	AP6	N2-C2-N1	2.64	121.75	117.19
6	A	1660	AP6	N8-C10-N1	2.49	119.46	115.82
5	A	1500	HEM	CBA-CAA-C2A	-2.48	108.33	112.69
5	B	2500	HEM	C1A-CHA-C4D	-2.43	124.27	127.47
5	A	1500	HEM	CHD-C4C-NC	-2.41	122.64	124.73
6	A	1660	AP6	C9-N5-C6	-2.38	113.68	119.19
6	B	2660	AP6	N8-C10-N1	2.34	119.25	115.82
5	A	1500	HEM	CHC-C1C-NC	-2.32	122.72	124.73
6	A	1660	AP6	C9-C4-N3	-2.21	114.46	117.62
5	A	1500	HEM	C4A-C3A-C2A	-2.21	105.46	107.00
6	A	1660	AP6	C9-C10-N8	2.12	122.13	119.23
6	B	2660	AP6	C9-C10-N8	2.11	122.13	119.23
5	B	2500	HEM	C1B-NB-C4B	-2.10	103.02	105.16
5	B	2500	HEM	C4A-NA-C1A	-2.09	104.01	106.76
6	B	2660	AP6	C9-C4-N3	-2.03	114.72	117.62

There are no chirality outliers.

All (2) torsion outliers are listed below:

Mol	Chain	Res	Type	Atoms
6	B	2660	AP6	C7-C6-C11-C16
6	B	2660	AP6	C7-C6-C11-C12

There are no ring outliers.

5.7 Other polymers ⓘ

There are no such residues in this entry.

5.8 Polymer linkage issues

There are no chain breaks in this entry.

6 Fit of model and data ⓘ

6.1 Protein, DNA and RNA chains ⓘ

In the following table, the column labelled ‘#RSRZ > 2’ contains the number (and percentage) of RSRZ outliers, followed by percent RSRZ outliers for the chain as percentile scores relative to all X-ray entries and entries of similar resolution. The OWAB column contains the minimum, median, 95th percentile and maximum values of the occupancy-weighted average B-factor per residue. The column labelled ‘Q < 0.9’ lists the number of (and percentage) of residues with an average occupancy less than 0.9.

Mol	Chain	Analysed	<RSRZ>	#RSRZ>2	OWAB(Å ²)	Q<0.9
1	A	416/444 (93%)	0.64	40 (9%) 8 8	27, 39, 71, 99	0
1	B	414/444 (93%)	0.62	29 (7%) 16 16	25, 45, 75, 99	0
All	All	830/888 (93%)	0.63	69 (8%) 11 11	25, 42, 75, 99	0

All (69) RSRZ outliers are listed below:

Mol	Chain	Res	Type	RSRZ
1	B	113	THR	15.8
1	B	117	PRO	14.2
1	A	113	THR	10.3
1	A	111	LEU	9.9
1	B	118	GLY	9.3
1	B	112	GLN	9.2
1	A	119	PRO	8.3
1	B	115	PRO	8.1
1	B	116	SER	8.0
1	B	114	ARG	7.9
1	B	119	PRO	7.4
1	A	118	GLY	7.3
1	A	114	ARG	7.3
1	A	115	PRO	6.6
1	A	112	GLN	6.4
1	A	117	PRO	5.9
1	B	120	PRO	5.9
1	A	110	LYS	5.7
1	B	110	LYS	5.7
1	B	111	LEU	5.2
1	B	121	PRO	4.5
1	B	259	GLN	4.4
1	A	259	GLN	4.2
1	A	109	ARG	4.1

Continued on next page...

Continued from previous page...

Mol	Chain	Res	Type	RSRZ
1	A	123	GLU	3.6
1	B	261	GLY	3.5
1	A	120	PRO	3.5
1	A	239	GLY	3.4
1	A	116	SER	3.4
1	A	121	PRO	3.3
1	A	146	GLN	3.3
1	A	69	LYS	3.2
1	A	153	GLN	3.0
1	A	126	LEU	3.0
1	A	450	ILE	2.8
1	B	260	ASP	2.8
1	A	187	VAL	2.8
1	B	146	GLN	2.7
1	B	323	GLU	2.7
1	A	67	GLY	2.7
1	B	270	VAL	2.7
1	A	238	PRO	2.7
1	B	109	ARG	2.6
1	A	275	LEU	2.6
1	A	130	ARG	2.4
1	A	261	GLY	2.4
1	B	106	VAL	2.4
1	B	304	LEU	2.3
1	B	72	ARG	2.3
1	A	447	TRP	2.3
1	A	99	ARG	2.3
1	A	108	PRO	2.3
1	A	107	LEU	2.2
1	B	71	PRO	2.2
1	A	157	ALA	2.2
1	A	161	SER	2.2
1	A	270	VAL	2.2
1	A	449	TRP	2.2
1	A	278	GLN	2.2
1	A	294	LEU	2.2
1	B	447	TRP	2.2
1	A	106	VAL	2.2
1	B	143	SER	2.1
1	A	448	ALA	2.1
1	B	239	GLY	2.1
1	A	390	ARG	2.0

Continued on next page...

Continued from previous page...

Mol	Chain	Res	Type	RSRZ
1	B	142	ARG	2.0
1	B	258	GLN	2.0
1	B	390	ARG	2.0

6.2 Non-standard residues in protein, DNA, RNA chains ⓘ

There are no non-standard protein/DNA/RNA residues in this entry.

6.3 Carbohydrates ⓘ

There are no carbohydrates in this entry.

6.4 Ligands ⓘ

In the following table, the Atoms column lists the number of modelled atoms in the group and the number defined in the chemical component dictionary. LLDF column lists the quality of electron density of the group with respect to its neighbouring residues in protein, DNA or RNA chains. The B-factors column lists the minimum, median, 95th percentile and maximum values of B factors of atoms in the group. The column labelled 'Q < 0.9' lists the number of atoms with occupancy less than 0.9.

Mol	Type	Chain	Res	Atoms	RSR	LLDF	B-factors(Å ²)	Q<0.9
3	CAC	B	950	3/5	0.21	2.47	80,80,81,85	0
7	ITU	B	2800	6/6	0.11	2.26	31,33,34,34	0
2	ACT	B	2855	4/4	0.23	2.06	46,46,47,48	0
2	ACT	A	1855	4/4	0.22	1.88	49,49,50,51	0
2	ACT	B	2860	4/4	0.14	1.86	42,43,43,45	0
2	ACT	A	1860	4/4	0.22	1.78	44,47,47,49	0
7	ITU	A	1800	6/6	0.17	1.51	29,30,31,32	0
6	AP6	B	2660	18/18	0.19	1.06	29,31,33,34	0
3	CAC	A	950	3/5	0.13	1.05	61,61,61,68	0
5	HEM	A	1500	43/43	0.18	0.90	25,28,36,38	0
2	ACT	B	2870	4/4	0.14	0.76	30,31,32,36	0
6	AP6	A	1660	18/18	0.18	0.40	29,32,33,33	0
5	HEM	B	2500	43/43	0.12	0.36	28,31,33,36	0
2	ACT	B	2850	4/4	0.10	-0.16	37,38,39,40	0
2	ACT	A	1850	4/4	0.07	-1.57	34,34,35,35	0
4	ZN	A	900	1/1	0.11	-3.27	37,37,37,37	0

6.5 Other polymers ⓘ

There are no such residues in this entry.