



Full wwPDB X-ray Structure Validation Report

Feb 26, 2014 – 10:10 PM GMT

PDB ID : 2DMR
Title : DITHIONITE REDUCED DMSO REDUCTASE FROM RHODOBACTER
CAPSULATUS
Authors : Mcalpine, A.S.; Bailey, S.
Deposited on : 1997-04-24
Resolution : 2.80 Å(reported)

This is a full wwPDB validation report for a publicly released PDB entry.
We welcome your comments at validation@mail.wwpdb.org
A user guide is available at <http://wwpdb.org/ValidationPDFNotes.html>

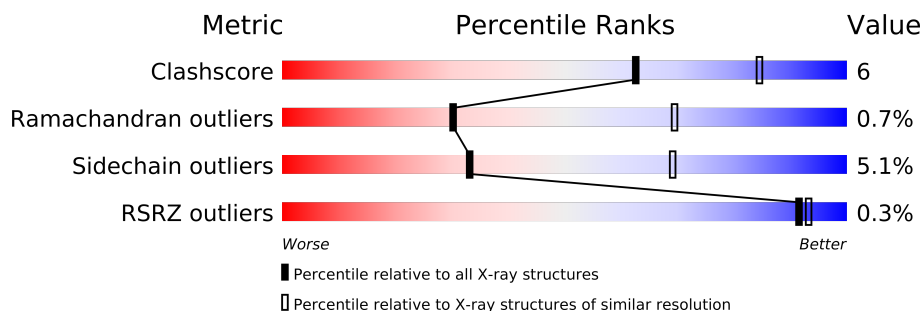
The following versions of software and data (see [references](#)) were used in the production of this report:

MolProbity : 4.02b-467
Mogul : 1.15 2013
Xtriage (Phenix) : dev-1323
EDS : stable22639
Percentile statistics : 21963
Refmac : 5.8.0049
CCP4 : 6.3.0 (Settle)
Ideal geometry (proteins) : Engh & Huber (2001)
Ideal geometry (DNA, RNA) : Parkinson et. al. (1996)
Validation Pipeline (wwPDB-VP) : stable22683

1 Overall quality at a glance


The reported resolution of this entry is 2.80 Å.

Percentile scores (ranging between 0-100) for global validation metrics of the entry are shown in the following graphic. The table shows the number of entries on which the scores are based.



Metric	Whole archive (#Entries)	Similar resolution (#Entries, resolution range(Å))
Clashscore	79885	2295 (2.80-2.80)
Ramachandran outliers	78287	2252 (2.80-2.80)
Sidechain outliers	78261	2254 (2.80-2.80)
RSRZ outliers	66119	1802 (2.80-2.80)

The table below summarises the geometric issues observed across the polymeric chains and their fit to the electron density. The red, orange, yellow and green segments on the lower bar indicate the fraction of residues that contain outliers for ≥ 3 , 2, 1 and 0 types of geometric quality criteria. The upper red bar (where present) indicates the fraction of residues that have poor fit to the electron density.

Mol	Chain	Length	Quality of chain
1	A	823	

The following table lists non-polymeric compounds that are outliers for geometric or electron-density-fit criteria:

Mol	Type	Chain	Res	Geometry	Electron density
5	SO2	A	786	-	X

2 Entry composition

There are 6 unique types of molecules in this entry. The entry contains 6120 atoms, of which 0 are hydrogen and 0 are deuterium.

In the tables below, the ZeroOcc column contains the number of atoms modelled with zero occupancy, the AltConf column contains the number of residues with at least one atom in alternate conformation and the Trace column contains the number of residues modelled with at most 2 atoms.

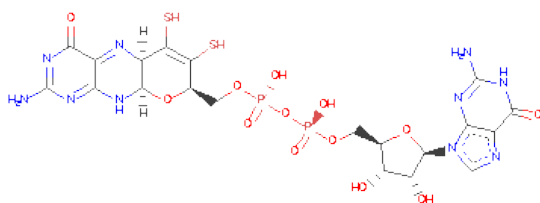
- Molecule 1 is a protein called DMSO REDUCTASE.

Mol	Chain	Residues	Atoms					ZeroOcc	AltConf	Trace
1	A	771	Total	C	N	O	S	0	0	0
			5914	3759	1002	1126	27			

There are 14 discrepancies between the modelled and reference sequences:

Chain	Residue	Modelled	Actual	Comment	Reference
A	39	SER	THR	DIFFERENCES IN MAP	UNP Q52675
A	43	ALA	GLU	DIFFERENCES IN MAP	UNP Q52675
A	107	GLU	GLN	CONFLICT	UNP Q52675
A	234	GLU	ASP	DIFFERENCES IN MAP	UNP Q52675
A	236	ILE	VAL	DIFFERENCES IN MAP	UNP Q52675
A	280	ASP	MET	DIFFERENCES IN MAP	UNP Q52675
A	294	GLU	SER	DIFFERENCES IN MAP	UNP Q52675
A	295	GLY	ASP	DIFFERENCES IN MAP	UNP Q52675
A	312	GLU	ILE	DIFFERENCES IN MAP	UNP Q52675
A	374	ALA	SER	CONFLICT	UNP Q52675
A	456	VAL	ILE	DIFFERENCES IN MAP	UNP Q52675
A	526	ALA	LYS	CONFLICT	UNP Q52675
A	552	ALA	GLY	MISSING FROM GB	UNP Q52675
A	555	GLN	GLU	CONFLICT	UNP Q52675

- Molecule 2 is 2-AMINO-5,6-DIMERCAPTO-7-METHYL-3,7,8A,9-TETRAHYDRO-8-OXA-1,3,9,10-TETRAAZA-ANTHRACEN-4-ONEGUANOSINE DINUCLEOTIDE (three-letter code: PGD) (formula: C₂₀H₂₄N₁₀O₁₃P₂S₂).



Mol	Chain	Residues	Atoms						ZeroOcc	AltConf
2	A	1	Total	C	N	O	P	S	0	0
			47	20	10	13	2	2		
2	A	1	Total	C	N	O	P	S	0	0
			47	20	10	13	2	2		

- Molecule 3 is MOLYBDENUM(IV) ION (three-letter code: 4MO) (formula: Mo).

Mol	Chain	Residues	Atoms		ZeroOcc	AltConf
3	A	1	Total	Mo	0	0
			1	1		

- Molecule 4 is OXYGEN ATOM (three-letter code: O) (formula: O).

Mol	Chain	Residues	Atoms		ZeroOcc	AltConf
4	A	1	Total	O	0	0
			1	1		

- Molecule 5 is SULFUR DIOXIDE (three-letter code: SO2) (formula: O₂S).



Mol	Chain	Residues	Atoms			ZeroOcc	AltConf
5	A	1	Total	O	S	0	0
			3	2	1		

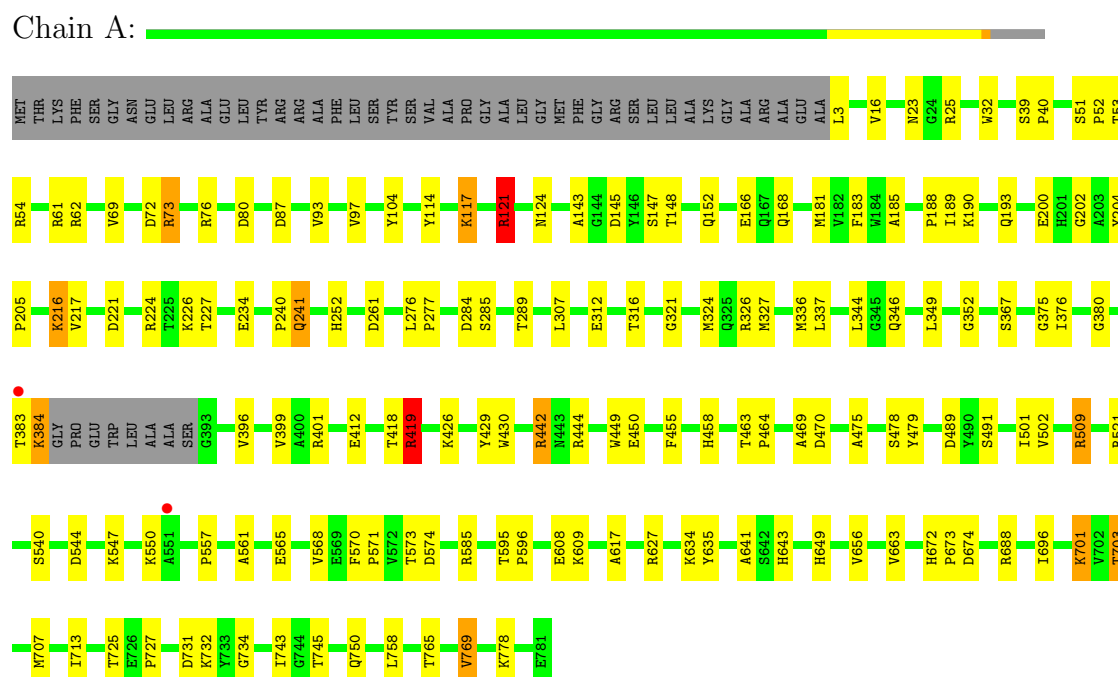
- Molecule 6 is water.

Mol	Chain	Residues	Atoms		ZeroOcc	AltConf
6	A	107	Total	O	0	0
			107	107		

3 Residue-property plots

These plots are drawn for all protein, RNA and DNA chains in the entry. The first graphic for a chain summarises the proportions of errors displayed in the second graphic. The second graphic shows the sequence view annotated by issues in geometry and electron density. Residues are color-coded according to the number of geometric quality criteria for which they contain at least one outlier: green = 0, yellow = 1, orange = 2 and red = 3 or more. A red dot above a residue indicates a poor fit to the electron density ($RSRZ > 2$). Stretches of 2 or more consecutive residues without any outlier are shown as a green connector. Residues present in the sample, but not in the model, are shown in grey.

• Molecule 1: DMSO REDUCTASE



4 Data and refinement statistics

Property	Value	Source
Space group	P 41 21 2	Depositor
Cell constants a, b, c, α , β , γ	81.03Å 81.03Å 230.04Å 90.00° 90.00° 90.00°	Depositor
Resolution (Å)	20.00 – 2.80 36.24 – 2.80	Depositor EDS
% Data completeness (in resolution range)	87.8 (20.00-2.80) 86.4 (36.24-2.80)	Depositor EDS
R_{merge}	0.08	Depositor
R_{sym}	(Not available)	Depositor
$\langle I/\sigma(I) \rangle$ ¹	5.92 (at 2.81Å)	Xtriage
Refinement program	REFMAC	Depositor
R, R_{free}	0.181 , 0.263 0.164 , (Not available)	Depositor DCC
R_{free} test set	No test flags present.	DCC
Wilson B-factor (Å ²)	23.3	Xtriage
Anisotropy	0.416	Xtriage
Bulk solvent k_{sol} (e/Å ³), B_{sol} (Å ²)	0.34 , 28.4	EDS
Estimated twinning fraction	No twinning to report.	Xtriage
L-test for twinning	$\langle L \rangle = 0.50$, $\langle L^2 \rangle = 0.33$	Xtriage
Outliers	0 of 17079 reflections	Xtriage
F_o, F_c correlation	0.94	EDS
Total number of atoms	6120	wwPDB-VP
Average B, all atoms (Å ²)	17.0	wwPDB-VP

Xtriage's analysis on translational NCS is as follows: *The largest off-origin peak in the Patterson function is 3.54% of the height of the origin peak. No significant pseudotranslation is detected.*

¹Intensities estimated from amplitudes.

5 Model quality

5.1 Standard geometry

Bond lengths and bond angles in the following residue types are not validated in this section: PGD, SO2, O, 4MO

The Z score for a bond length (or angle) is the number of standard deviations the observed value is removed from the expected value. A bond length (or angle) with $|Z| > 5$ is considered an outlier worth inspection. RMSZ is the root-mean-square of all Z scores of the bond lengths (or angles).

Mol	Chain	Bond lengths		Bond angles	
		RMSZ	# Z >5	RMSZ	# Z >5
1	A	0.48	0/6071	1.21	34/8261 (0.4%)

There are no bond length outliers.

All (34) bond angle outliers are listed below:

Mol	Chain	Res	Type	Atoms	Z	Observed(°)	Ideal(°)
1	A	121	ARG	CD-NE-CZ	13.91	143.07	123.60
1	A	76	ARG	NE-CZ-NH1	10.30	125.45	120.30
1	A	627	ARG	NE-CZ-NH2	-9.11	115.74	120.30
1	A	326	ARG	NE-CZ-NH1	9.06	124.83	120.30
1	A	419	ARG	NE-CZ-NH1	8.85	124.73	120.30
1	A	73	ARG	CD-NE-CZ	8.37	135.31	123.60
1	A	326	ARG	NE-CZ-NH2	-8.04	116.28	120.30
1	A	444	ARG	CD-NE-CZ	7.99	134.79	123.60
1	A	688	ARG	NE-CZ-NH2	-7.97	116.31	120.30
1	A	585	ARG	NE-CZ-NH2	-7.88	116.36	120.30
1	A	509	ARG	NE-CZ-NH1	-7.50	116.55	120.30
1	A	521	ARG	NE-CZ-NH1	-7.05	116.77	120.30
1	A	326	ARG	CD-NE-CZ	7.04	133.45	123.60
1	A	568	VAL	CB-CA-C	-6.91	98.28	111.40
1	A	76	ARG	NE-CZ-NH2	-6.87	116.86	120.30
1	A	54	ARG	NE-CZ-NH1	6.82	123.71	120.30
1	A	585	ARG	NE-CZ-NH1	6.69	123.64	120.30
1	A	25	ARG	NE-CZ-NH2	-6.49	117.05	120.30
1	A	61	ARG	NE-CZ-NH1	6.47	123.54	120.30
1	A	521	ARG	NE-CZ-NH2	-6.36	117.12	120.30
1	A	72	ASP	CB-CG-OD1	6.13	123.81	118.30
1	A	521	ARG	NH1-CZ-NH2	6.10	126.11	119.40
1	A	442	ARG	NE-CZ-NH2	-6.07	117.26	120.30
1	A	489	ASP	CB-CG-OD2	5.82	123.53	118.30

Continued on next page...

Continued from previous page...

Mol	Chain	Res	Type	Atoms	Z	Observed(°)	Ideal(°)
1	A	458	HIS	CA-CB-CG	5.79	123.44	113.60
1	A	221	ASP	CB-CG-OD1	5.78	123.50	118.30
1	A	758	LEU	CA-CB-CG	5.54	128.04	115.30
1	A	224	ARG	NE-CZ-NH1	5.53	123.07	120.30
1	A	87	ASP	CB-CG-OD2	5.47	123.22	118.30
1	A	326	ARG	CA-C-O	5.37	131.38	120.10
1	A	54	ARG	NE-CZ-NH2	-5.35	117.62	120.30
1	A	703	THR	CB-CA-C	-5.21	97.53	111.60
1	A	674	ASP	CB-CG-OD1	5.09	122.88	118.30
1	A	470	ASP	CB-CG-OD2	-5.03	113.78	118.30

There are no chirality outliers.

There are no planarity outliers.

5.2 Close contacts ⓘ

In the following table, the Non-H and H(model) columns list the number of non-hydrogen atoms and hydrogen atoms in the chain respectively. The H(added) column lists the number of hydrogens added by MolProbity. The Clashes column lists the number of clashes within the asymmetric unit, and the number in parentheses is this value normalized per 1000 atoms of the molecule in the chain. The Symm-Clashes column gives symmetry related clashes, in the same way as for the Clashes column.

Mol	Chain	Non-H	H(model)	H(added)	Clashes	Symm-Clashes
1	A	5914	0	5723	66	0
2	A	94	0	40	3	0
3	A	1	0	0	0	0
4	A	1	0	0	0	0
5	A	3	0	0	0	0
6	A	107	0	0	1	0
All	All	6120	0	5763	66	0

Clashscore is defined as the number of clashes calculated for the entry per 1000 atoms (including hydrogens) of the entry. The overall clashscore for this entry is 6.

All (66) close contacts within the same asymmetric unit are listed below.

Atom-1	Atom-2	Distance(Å)	Clash(Å)
1:A:147:SER:HB3	2:A:783:PGD:S12	2.23	0.78
1:A:121:ARG:HA	1:A:121:ARG:HE	1.49	0.76
1:A:189:ILE:HD12	1:A:227:THR:HA	1.74	0.69
1:A:732:LYS:HD3	1:A:769:VAL:HG22	1.73	0.68

Continued on next page...

Continued from previous page...

Atom-1	Atom-2	Distance(Å)	Clash(Å)
1:A:284:ASP:O	1:A:285:SER:HB2	2.01	0.60
1:A:696:ILE:HG22	1:A:731:ASP:HB3	1.85	0.59
1:A:561:ALA:O	1:A:565:GLU:HG3	2.02	0.59
1:A:121:ARG:HB3	1:A:375:GLY:HA3	1.85	0.57
1:A:573:THR:OG1	1:A:574:ASP:N	2.36	0.57
1:A:121:ARG:CA	1:A:121:ARG:HE	2.17	0.56
1:A:383:THR:O	1:A:384:LYS:HB2	2.04	0.56
1:A:501:ILE:HG22	1:A:502:VAL:HG13	1.88	0.55
1:A:147:SER:HA	2:A:782:PGD:S13	2.48	0.54
1:A:183:PHE:CE1	1:A:188:PRO:HG3	2.43	0.54
1:A:479:TYR:HB3	1:A:501:ILE:HD12	1.90	0.54
1:A:276:LEU:HB3	1:A:277:PRO:HD3	1.91	0.53
1:A:181:MET:HB3	1:A:217:VAL:HG22	1.90	0.53
1:A:641:ALA:HA	1:A:713:ILE:O	2.10	0.52
1:A:193:GLN:HG2	6:A:858:HOH:O	2.09	0.51
1:A:143:ALA:HB2	1:A:396:VAL:CG1	2.41	0.51
1:A:143:ALA:HB2	1:A:396:VAL:HG11	1.93	0.51
1:A:634:LYS:HE2	1:A:635:TYR:CZ	2.46	0.51
1:A:312:GLU:OE1	1:A:344:LEU:HA	2.12	0.50
1:A:240:PRO:O	1:A:241:GLN:HB2	2.11	0.50
1:A:185:ALA:O	1:A:321:GLY:HA3	2.11	0.50
1:A:204:TYR:HB2	1:A:205:PRO:HD3	1.94	0.50
1:A:649:HIS:CG	2:A:782:PGD:H102	2.47	0.49
1:A:608:GLU:HB2	1:A:617:ALA:HB2	1.95	0.48
1:A:51:SER:HB2	1:A:52:PRO:HD2	1.96	0.48
1:A:455:PHE:CD2	1:A:469:ALA:HA	2.49	0.48
1:A:663:VAL:HG21	1:A:701:LYS:HD2	1.96	0.47
1:A:367:SER:HA	1:A:491:SER:HA	1.97	0.46
1:A:463:THR:HB	1:A:464:PRO:HD2	1.98	0.45
1:A:327:MET:O	1:A:745:THR:HG22	2.16	0.45
1:A:743:ILE:HG13	1:A:743:ILE:O	2.16	0.45
1:A:634:LYS:HE2	1:A:635:TYR:OH	2.16	0.45
1:A:316:THR:O	1:A:352:GLY:HA2	2.17	0.44
1:A:62:ARG:HD2	1:A:80:ASP:OD2	2.17	0.44
1:A:324:MET:HA	1:A:327:MET:SD	2.57	0.44
1:A:166:GLU:O	1:A:168:GLN:NE2	2.47	0.44
1:A:51:SER:HB2	1:A:52:PRO:CD	2.48	0.43
1:A:475:ALA:HA	1:A:509:ARG:O	2.19	0.43
1:A:261:ASP:C	1:A:261:ASP:OD1	2.56	0.43
1:A:114:TYR:OH	1:A:145:ASP:HB2	2.19	0.43
1:A:252:HIS:CE1	1:A:289:THR:HG22	2.54	0.43
1:A:39:SER:HA	1:A:40:PRO:HD3	1.93	0.42

Continued on next page...

Continued from previous page...

Atom-1	Atom-2	Distance(Å)	Clash(Å)
1:A:16:VAL:HG12	1:A:32:TRP:HB2	2.00	0.42
1:A:3:LEU:HD13	1:A:23:ASN:O	2.20	0.42
1:A:104:TYR:CZ	1:A:426:LYS:HD2	2.55	0.42
1:A:93:VAL:O	1:A:97:VAL:HG23	2.18	0.42
1:A:117:LYS:HE2	1:A:124:ASN:OD1	2.20	0.42
1:A:672:HIS:CG	1:A:673:PRO:HD2	2.55	0.41
1:A:276:LEU:N	1:A:277:PRO:HD2	2.34	0.41
1:A:570:PHE:HB3	1:A:571:PRO:HD2	2.02	0.41
1:A:202:GLY:O	1:A:205:PRO:HD2	2.20	0.41
1:A:190:LYS:NZ	1:A:643:HIS:O	2.45	0.41
1:A:412:GLU:OE1	1:A:419:ARG:NH1	2.51	0.41
1:A:725:THR:O	1:A:727:PRO:HD3	2.21	0.41
1:A:455:PHE:HD2	1:A:469:ALA:HA	1.85	0.41
1:A:401:ARG:HD2	1:A:750:GLN:HB3	2.03	0.41
1:A:595:THR:HB	1:A:596:PRO:CD	2.51	0.41
1:A:148:THR:O	1:A:152:GLN:HG2	2.21	0.41
1:A:346:GLN:HA	1:A:349:LEU:HD12	2.03	0.41
1:A:216:LYS:NZ	1:A:234:GLU:OE1	2.54	0.40
1:A:73:ARG:HD2	1:A:450:GLU:O	2.21	0.40
1:A:595:THR:HB	1:A:596:PRO:HD2	2.04	0.40

There are no symmetry-related clashes.

5.3 Torsion angles

5.3.1 Protein backbone ⓘ

In the following table, the Percentiles column shows the percent Ramachandran outliers of the chain as a percentile score with respect to all X-ray entries followed by that with respect to entries of similar resolution. The Analysed column shows the number of residues for which the backbone conformation was analysed, and the total number of residues.

Mol	Chain	Analysed	Favoured	Allowed	Outliers	Percentiles
1	A	767/823 (93%)	731 (95%)	31 (4%)	5 (1%)	30 69

All (5) Ramachandran outliers are listed below:

Mol	Chain	Res	Type
1	A	380	GLY
1	A	117	LYS
1	A	734	GLY

Continued on next page...

Continued from previous page...

Mol	Chain	Res	Type
1	A	241	GLN
1	A	557	PRO

5.3.2 Protein sidechains ⓘ

In the following table, the Percentiles column shows the percent sidechain outliers of the chain as a percentile score with respect to all X-ray entries followed by that with respect to entries of similar resolution. The Analysed column shows the number of residues for which the sidechain conformation was analysed, and the total number of residues.

Mol	Chain	Analysed	Rotameric	Outliers	Percentiles	
1	A	612/648 (94%)	581 (95%)	31 (5%)	33	69

All (31) residues with a non-rotameric sidechain are listed below:

Mol	Chain	Res	Type
1	A	53	THR
1	A	69	VAL
1	A	121	ARG
1	A	200	GLU
1	A	216	LYS
1	A	226	LYS
1	A	307	LEU
1	A	336	MET
1	A	337	LEU
1	A	376	ILE
1	A	384	LYS
1	A	399	VAL
1	A	418	THR
1	A	419	ARG
1	A	429	TYR
1	A	430	TRP
1	A	442	ARG
1	A	449	TRP
1	A	478	SER
1	A	540	SER
1	A	544	ASP
1	A	547	LYS
1	A	550	LYS
1	A	609	LYS
1	A	656	VAL
1	A	701	LYS

Continued on next page...

Continued from previous page...

Mol	Chain	Res	Type
1	A	703	THR
1	A	707	MET
1	A	765	THR
1	A	769	VAL
1	A	778	LYS

Some sidechains can be flipped to improve hydrogen bonding and reduce clashes. All (2) such sidechains are listed below:

Mol	Chain	Res	Type
1	A	241	GLN
1	A	252	HIS

5.3.3 RNA ⓘ

There are no RNA chains in this entry.

5.4 Non-standard residues in protein, DNA, RNA chains ⓘ

There are no non-standard protein/DNA/RNA residues in this entry.

5.5 Carbohydrates ⓘ

There are no carbohydrates in this entry.

5.6 Ligand geometry ⓘ

Of 5 ligands modelled in this entry, 2 are monoatomic - leaving 3 for Mogul analysis.

In the following table, the Counts columns list the number of bonds (or angles) for which Mogul statistics could be retrieved, the number of bonds (or angles) that are observed in the model and the number of bonds (or angles) that are defined in the chemical component dictionary. The Link column lists molecule types, if any, to which the group is linked. The Z score for a bond length (or angle) is the number of standard deviations the observed value is removed from the expected value. A bond length (or angle) with $|Z| > 2$ is considered an outlier worth inspection. RMSZ is the root-mean-square of all Z scores of the bond lengths (or angles).

Mol	Type	Chain	Res	Link	Bond lengths			Bond angles		
					Counts	RMSZ	$\# Z > 2$	Counts	RMSZ	$\# Z > 2$
2	PGD	A	782	3	52,52,52	3.08	17 (32%)	72,81,81	4.26	14 (19%)

Mol	Type	Chain	Res	Link	Bond lengths			Bond angles		
					Counts	RMSZ	# Z > 2	Counts	RMSZ	# Z > 2
2	PGD	A	783	3	52,52,52	2.99	16 (30%)	72,81,81	4.59	16 (22%)
5	SO2	A	786	-	2,2,2	1.44	0	1,1,1	1.01	0

In the following table, the Chirals column lists the number of chiral outliers, the number of chiral centers analysed, the number of these observed in the model and the number defined in the chemical component dictionary. Similar counts are reported in the Torsion and Rings columns. '-' means no outliers of that kind were identified.

Mol	Type	Chain	Res	Link	Chirals	Torsions	Rings
2	PGD	A	782	3	-	0/22/82/82	0/1/6/6
2	PGD	A	783	3	-	0/22/82/82	0/1/6/6
5	SO2	A	786	-	-	0/0/0/0	0/0/0/0

All (33) bond length outliers are listed below:

Mol	Chain	Res	Type	Atoms	Z	Observed(Å)	Ideal(Å)
2	A	782	PGD	C16-N15	13.79	1.44	1.28
2	A	783	PGD	C16-N15	12.62	1.43	1.28
2	A	782	PGD	C21-N22	7.90	1.43	1.35
2	A	783	PGD	C21-N22	7.75	1.43	1.35
2	A	783	PGD	C2-N2	6.49	1.42	1.32
2	A	782	PGD	C2-N2	6.44	1.42	1.32
2	A	783	PGD	PB-O1B	5.76	1.73	1.51
2	A	783	PGD	PA-O1A	5.72	1.73	1.51
2	A	782	PGD	PA-O1A	5.65	1.72	1.51
2	A	782	PGD	PB-O1B	5.58	1.72	1.51
2	A	782	PGD	PB-O2B	3.97	1.72	1.55
2	A	782	PGD	PA-O2A	3.89	1.72	1.55
2	A	783	PGD	PA-O2A	3.88	1.72	1.55
2	A	783	PGD	PB-O2B	3.84	1.72	1.55
2	A	782	PGD	PA-O3A	3.41	1.74	1.59
2	A	782	PGD	C19-N19	3.35	1.42	1.34
2	A	783	PGD	O11-C23	-3.31	1.39	1.44
2	A	783	PGD	C19-N19	3.18	1.41	1.34
2	A	783	PGD	PA-O3A	3.14	1.73	1.59
2	A	783	PGD	C2-N3	3.06	1.37	1.33
2	A	782	PGD	C2-N3	3.05	1.37	1.33
2	A	782	PGD	PB-O5'	2.86	1.72	1.59
2	A	783	PGD	PB-O5'	2.85	1.72	1.59
2	A	783	PGD	C4-N9	-2.66	1.33	1.37
2	A	783	PGD	C17-C16	-2.45	1.40	1.47
2	A	782	PGD	O11-C11	-2.34	1.40	1.43

Continued on next page...

Continued from previous page...

Mol	Chain	Res	Type	Atoms	Z	Observed(Å)	Ideal(Å)
2	A	782	PGD	C17-C16	-2.32	1.40	1.47
2	A	782	PGD	O4'-C4'	-2.30	1.39	1.45
2	A	782	PGD	C13-S13	2.25	1.82	1.74
2	A	783	PGD	O11-C11	-2.11	1.40	1.43
2	A	782	PGD	O2'-C2'	-2.11	1.37	1.43
2	A	782	PGD	C5-C4	-2.05	1.35	1.40
2	A	783	PGD	C12-S12	2.02	1.82	1.74

All (30) bond angle outliers are listed below:

Mol	Chain	Res	Type	Atoms	Z	Observed(°)	Ideal(°)
2	A	783	PGD	C6-C5-N7	-35.25	129.39	134.14
2	A	782	PGD	C6-C5-N7	-33.29	129.66	134.14
2	A	783	PGD	C17-C16-N15	6.77	125.08	117.94
2	A	782	PGD	N20-C19-N18	-5.13	118.32	126.41
2	A	782	PGD	PA-O3B-PB	5.03	146.43	131.68
2	A	783	PGD	C4'-O4'-C1'	-4.93	104.39	109.75
2	A	782	PGD	C17-C16-N15	4.81	123.00	117.94
2	A	783	PGD	PA-O3B-PB	4.76	145.64	131.68
2	A	783	PGD	N20-C19-N18	-4.22	119.74	126.41
2	A	782	PGD	C8-N9-C4	-4.12	103.76	106.90
2	A	783	PGD	O4'-C1'-N9	3.93	112.09	108.44
2	A	783	PGD	C8-N9-C4	-3.74	104.04	106.90
2	A	783	PGD	O17-C17-N18	-3.68	114.05	120.25
2	A	783	PGD	O11-C23-C14	3.50	113.50	108.67
2	A	783	PGD	C5-C4-N3	-3.45	120.94	125.94
2	A	782	PGD	C5-C4-N3	-3.41	121.01	125.94
2	A	782	PGD	C4'-O4'-C1'	-3.17	106.30	109.75
2	A	783	PGD	C21-C16-N15	-3.00	116.47	124.33
2	A	783	PGD	O11-C23-N22	2.83	112.91	109.22
2	A	782	PGD	O4'-C1'-N9	2.68	110.93	108.44
2	A	783	PGD	C2-N3-C4	2.67	118.84	115.09
2	A	783	PGD	N19-C19-N20	2.52	119.76	116.49
2	A	782	PGD	C10-C11-C12	2.47	113.89	110.98
2	A	782	PGD	N19-C19-N20	2.38	119.58	116.49
2	A	783	PGD	PA-O3A-C10	-2.31	105.41	122.03
2	A	782	PGD	O11-C23-C14	2.24	111.75	108.67
2	A	782	PGD	C21-C16-N15	-2.17	118.64	124.33
2	A	782	PGD	O5'-PB-O1B	2.17	117.87	109.37
2	A	783	PGD	C16-C17-N18	2.17	120.95	117.08
2	A	782	PGD	O4'-C4'-C3'	2.05	109.33	105.17

There are no chirality outliers.

There are no torsion outliers.

There are no ring outliers.

5.7 Other polymers ⓘ

There are no such residues in this entry.

5.8 Polymer linkage issues

There are no chain breaks in this entry.

6 Fit of model and data ⓘ

6.1 Protein, DNA and RNA chains ⓘ

In the following table, the column labelled ‘#RSRZ> 2’ contains the number (and percentage) of RSRZ outliers, followed by percent RSRZ outliers for the chain as percentile scores relative to all X-ray entries and entries of similar resolution. The OWAB column contains the minimum, median, 95th percentile and maximum values of the occupancy-weighted average B-factor per residue. The column labelled ‘Q< 0.9’ lists the number of (and percentage) of residues with an average occupancy less than 0.9.

Mol	Chain	Analysed	<RSRZ>	#RSRZ>2	OWAB(Å ²)	Q<0.9
1	A	771/823 (93%)	-0.73	2 (0%) 91 93	9, 17, 25, 40	0

All (2) RSRZ outliers are listed below:

Mol	Chain	Res	Type	RSRZ
1	A	383	THR	3.8
1	A	551	ALA	2.4

6.2 Non-standard residues in protein, DNA, RNA chains ⓘ

There are no non-standard protein/DNA/RNA residues in this entry.

6.3 Carbohydrates ⓘ

There are no carbohydrates in this entry.

6.4 Ligands ⓘ

In the following table, the Atoms column lists the number of modelled atoms in the group and the number defined in the chemical component dictionary. LLDF column lists the quality of electron density of the group with respect to its neighbouring residues in protein, DNA or RNA chains. The B-factors column lists the minimum, median, 95th percentile and maximum values of B factors of atoms in the group. The column labelled ‘Q< 0.9’ lists the number of atoms with occupancy less than 0.9.

Mol	Type	Chain	Res	Atoms	RSR	LLDF	B-factors(Å ²)	Q<0.9
5	SO2	A	786	3/3	0.12	3.37	28,28,28,29	0
4	O	A	785	1/1	0.17	1.47	6,6,6,6	0
2	PGD	A	782	47/47	0.14	0.20	9,11,12,13	0

Continued on next page...

Continued from previous page...

Mol	Type	Chain	Res	Atoms	RSR	LLDF	B-factors(\AA^2)	Q<0.9
2	PGD	A	783	47/47	0.14	0.05	11,13,14,18	0
3	4MO	A	784	1/1	0.06	-9.35	30,30,30,30	0

6.5 Other polymers ⓘ

There are no such residues in this entry.