



wwPDB X-ray Structure Validation Summary Report i

Mar 1, 2014 – 03:56 AM GMT

PDB ID : 3DM6
Title : Beta-secretase 1 complexed with statine-based inhibitor
Authors : Lindberg, J.; Borkakoti, N.; Nystrom, S.
Deposited on : 2008-06-30
Resolution : 2.60 Å(reported)

This is a wwPDB validation summary report for a publicly released PDB entry.

We welcome your comments at validation@mail.wwpdb.org

A user guide is available at <http://wwpdb.org/ValidationPDFNotes.html>

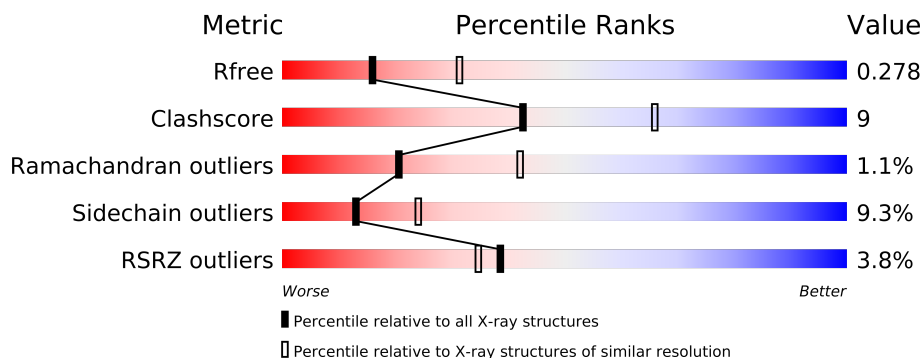
The following versions of software and data (see [references](#)) were used in the production of this report:

MolProbity	:	4.02b-467
Mogul	:	1.15 2013
Xtriage (Phenix)	:	dev-1323
EDS	:	stable22639
Percentile statistics	:	21963
Refmac	:	5.8.0049
CCP4	:	6.3.0 (Settle)
Ideal geometry (proteins)	:	Engh & Huber (2001)
Ideal geometry (DNA, RNA)	:	Parkinson et. al. (1996)
Validation Pipeline (wwPDB-VP)	:	stable22683

1 Overall quality at a glance

The reported resolution of this entry is 2.60 Å.

Percentile scores (ranging between 0-100) for global validation metrics of the entry are shown in the following graphic. The table shows the number of entries on which the scores are based.



Metric	Whole archive (#Entries)	Similar resolution (#Entries, resolution range(Å))
R_{free}	66092	1718 (2.60-2.60)
Clashscore	79885	2154 (2.60-2.60)
Ramachandran outliers	78287	2113 (2.60-2.60)
Sidechain outliers	78261	2113 (2.60-2.60)
RSRZ outliers	66119	1718 (2.60-2.60)

The table below summarises the geometric issues observed across the polymeric chains and their fit to the electron density. The red, orange, yellow and green segments on the lower bar indicate the fraction of residues that contain outliers for ≥ 3 , 2, 1 and 0 types of geometric quality criteria. The upper red bar (where present) indicates the fraction of residues that have poor fit to the electron density.

Mol	Chain	Length	Quality of chain
1	A	406	
1	B	406	
1	C	406	

2 Entry composition

There are 4 unique types of molecules in this entry. The entry contains 8934 atoms, of which 0 are hydrogen and 0 are deuterium.

In the tables below, the ZeroOcc column contains the number of atoms modelled with zero occupancy, the AltConf column contains the number of residues with at least one atom in alternate conformation and the Trace column contains the number of residues modelled with at most 2 atoms.

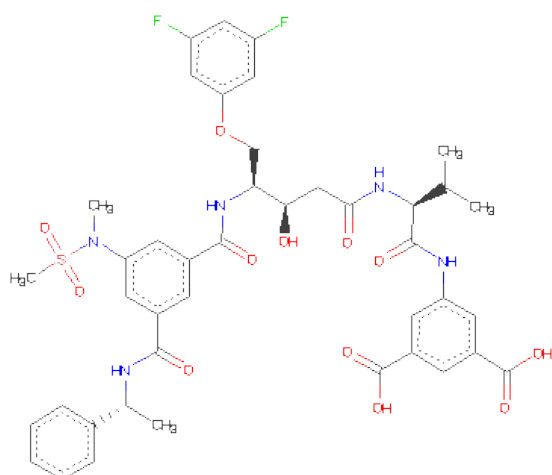
- Molecule 1 is a protein called Beta-secretase 1.

Mol	Chain	Residues	Atoms					ZeroOcc	AltConf	Trace
1	A	369	Total	C	N	O	S	0	0	0
			2909	1865	485	546	13			
1	B	368	Total	C	N	O	S	0	0	0
			2902	1860	484	545	13			
1	C	367	Total	C	N	O	S	0	0	0
			2893	1855	483	542	13			

There are 3 discrepancies between the modelled and reference sequences:

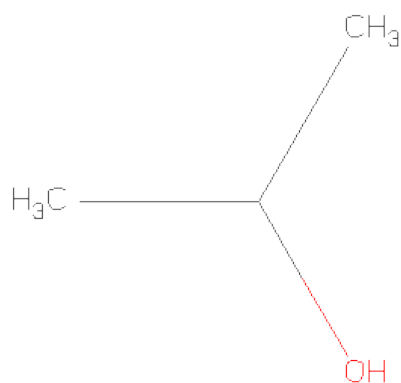
Chain	Residue	Modelled	Actual	Comment	Reference
A	28P	MET	-	INITIATING METHIONINE	UNP P56817
B	28P	MET	-	INITIATING METHIONINE	UNP P56817
C	28P	MET	-	INITIATING METHIONINE	UNP P56817

- Molecule 2 is 5-[[[(2S)-2-[[[(3R,4S)-5-(3,5-DIFLUOROPHENOXY)-3-HYDROXY-4-[[3-(METHYL-METHYLSULFONYL-AMINO)-5-[[[(1R)-1-PHENYLETHYL]CARBAMOYL]PHENYL]CARBOXYLAMINO]PENTANOYL]AMINO]-3-METHYL-BUTANOYL]AMINO]BENZENE-1,3-DICARBOXYLICACID (three-letter code: 757) (formula: C₄₂H₄₅F₂N₅O₁₂S).



Mol	Chain	Residues	Atoms						ZeroOcc	AltConf
2	A	1	Total	C	F	N	O	S	0	0
			62	42	2	5	12	1		
2	B	1	Total	C	F	N	O	S	0	0
			62	42	2	5	12	1		
2	C	1	Total	C	F	N	O	S	0	0
			62	42	2	5	12	1		

- Molecule 3 is ISOPROPYL ALCOHOL (three-letter code: IPA) (formula: C₃H₈O).



Mol	Chain	Residues	Atoms			ZeroOcc	AltConf
3	A	1	Total	C	O	0	0
			4	3	1		

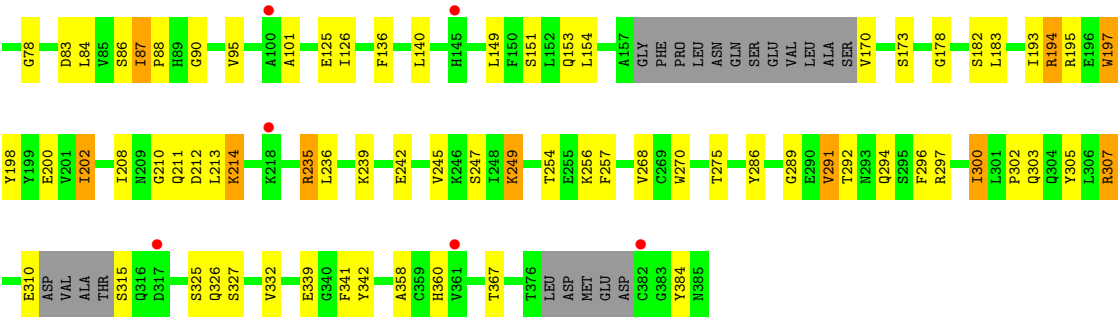
Continued on next page...

Continued from previous page...

Mol	Chain	Residues	Atoms			ZeroOcc	AltConf
3	B	1	Total	C	O	0	0
			4	3	1		
3	C	1	Total	C	O	0	0
			4	3	1		

- Molecule 4 is water.

Mol	Chain	Residues	Atoms		ZeroOcc	AltConf
4	A	11	Total	O	0	0
			11	11		
4	B	12	Total	O	0	0
			12	12		
4	C	9	Total	O	0	0
			9	9		



4 Data and refinement statistics

Property	Value	Source
Space group	P 1 21 1	Depositor
Cell constants a, b, c, α , β , γ	83.44Å 103.02Å 103.11Å 90.00° 103.50° 90.00°	Depositor
Resolution (Å)	63.76 – 2.60 63.74 – 2.60	Depositor EDS
% Data completeness (in resolution range)	97.6 (63.76-2.60) 97.6 (63.74-2.60)	Depositor EDS
R_{merge}	0.05	Depositor
R_{sym}	0.05	Depositor
$\langle I/\sigma(I) \rangle$ ¹	3.50 (at 2.61Å)	Xtriage
Refinement program	REFMAC 5.2.0019	Depositor
R, R_{free}	0.223 , 0.281 0.221 , 0.278	Depositor DCC
R_{free} test set	2605 reflections (5.38%)	DCC
Wilson B-factor (Å ²)	67.9	Xtriage
Anisotropy	0.122	Xtriage
Bulk solvent k_{sol} (e/Å ³), B_{sol} (Å ²)	0.35 , 43.2	EDS
Estimated twinning fraction	No twinning to report.	Xtriage
L-test for twinning	$\langle L \rangle = 0.48$, $\langle L^2 \rangle = 0.31$	Xtriage
Outliers	0 of 51026 reflections	Xtriage
F_o, F_c correlation	0.94	EDS
Total number of atoms	8934	wwPDB-VP
Average B, all atoms (Å ²)	65.0	wwPDB-VP

Xtriage's analysis on translational NCS is as follows: *The largest off-origin peak in the Patterson function is 3.21% of the height of the origin peak. No significant pseudotranslation is detected.*

¹Intensities estimated from amplitudes.

5 Model quality

5.1 Standard geometry

Bond lengths and bond angles in the following residue types are not validated in this section: IPA, 757

The Z score for a bond length (or angle) is the number of standard deviations the observed value is removed from the expected value. A bond length (or angle) with $|Z| > 5$ is considered an outlier worth inspection. RMSZ is the root-mean-square of all Z scores of the bond lengths (or angles).

Mol	Chain	Bond lengths		Bond angles	
		RMSZ	$\# Z > 5$	RMSZ	$\# Z > 5$
1	A	0.64	0/2982	0.70	0/4048
1	B	0.60	1/2975 (0.0%)	0.70	0/4038
1	C	0.60	0/2966	0.69	0/4026
All	All	0.62	1/8923 (0.0%)	0.70	0/12112

All (1) bond length outliers are listed below:

Mol	Chain	Res	Type	Atoms	Z	Observed(Å)	Ideal(Å)
1	B	382	CYS	CB-SG	-5.02	1.73	1.81

There are no bond angle outliers.

There are no chirality outliers.

There are no planarity outliers.

5.2 Close contacts

In the following table, the Non-H and H(model) columns list the number of non-hydrogen atoms and hydrogen atoms in the chain respectively. The H(added) column lists the number of hydrogens added by MolProbity. The Clashes column lists the number of clashes within the asymmetric unit, and the number in parentheses is this value normalized per 1000 atoms of the molecule in the chain. The Symm-Clashes column gives symmetry related clashes, in the same way as for the Clashes column.

Mol	Chain	Non-H	H(model)	H(added)	Clashes	Symm-Clashes
1	A	2909	0	2824	49	0
1	B	2902	0	2815	52	0
1	C	2893	0	2809	54	0
2	A	62	0	43	4	0
2	B	62	0	43	2	0

Continued on next page...

Continued from previous page...

Mol	Chain	Non-H	H(model)	H(added)	Clashes	Symm-Clashes
2	C	62	0	43	1	0
3	A	4	0	8	0	0
3	B	4	0	8	0	0
3	C	4	0	8	1	0
4	A	11	0	0	0	0
4	B	12	0	0	0	0
4	C	9	0	0	0	0
All	All	8934	0	8601	155	0

Clashscore is defined as the number of clashes calculated for the entry per 1000 atoms (including hydrogens) of the entry. The overall clashscore for this entry is 9.

The worst 5 of 155 close contacts within the same asymmetric unit are listed below.

Atom-1	Atom-2	Distance(Å)	Clash(Å)
1:B:26:THR:HG22	1:B:50:ARG:HH12	0.97	1.12
1:C:194:ARG:HH22	1:C:384:TYR:H	1.08	0.97
1:B:26:THR:HG22	1:B:50:ARG:NH1	1.80	0.96
1:C:291:VAL:HG22	1:C:294:GLN:HB2	1.49	0.94
1:C:26:THR:HG22	1:C:50:ARG:HH12	1.34	0.91

There are no symmetry-related clashes.

5.3 Torsion angles

5.3.1 Protein backbone ⓘ

In the following table, the Percentiles column shows the percent Ramachandran outliers of the chain as a percentile score with respect to all X-ray entries followed by that with respect to entries of similar resolution. The Analysed column shows the number of residues for which the backbone conformation was analysed, and the total number of residues.

Mol	Chain	Analysed	Favoured	Allowed	Outliers	Percentiles	
1	A	361/406 (89%)	333 (92%)	26 (7%)	2 (1%)	33	63
1	B	360/406 (89%)	327 (91%)	25 (7%)	8 (2%)	10	18
1	C	359/406 (88%)	325 (90%)	32 (9%)	2 (1%)	33	63
All	All	1080/1218 (89%)	985 (91%)	83 (8%)	12 (1%)	21	42

5 of 12 Ramachandran outliers are listed below:

Mol	Chain	Res	Type
1	A	47(P)	PHE
1	B	47(P)	PHE
1	B	272	ALA
1	C	214	LYS
1	A	254	THR

5.3.2 Protein sidechains ⓘ

In the following table, the Percentiles column shows the percent sidechain outliers of the chain as a percentile score with respect to all X-ray entries followed by that with respect to entries of similar resolution. The Analysed column shows the number of residues for which the sidechain conformation was analysed, and the total number of residues.

Mol	Chain	Analysed	Rotameric	Outliers	Percentiles	
1	A	315/347 (91%)	290 (92%)	25 (8%)	18	34
1	B	314/347 (90%)	282 (90%)	32 (10%)	11	19
1	C	313/347 (90%)	282 (90%)	31 (10%)	11	21
All	All	942/1041 (90%)	854 (91%)	88 (9%)	13	24

5 of 88 residues with a non-rotameric sidechain are listed below:

Mol	Chain	Res	Type
1	B	197	TRP
1	B	292	THR
1	C	292	THR
1	B	209	ASN
1	B	254	THR

Some sidechains can be flipped to improve hydrogen bonding and reduce clashes. 5 of 20 such sidechains are listed below:

Mol	Chain	Res	Type
1	B	266	GLN
1	B	271	GLN
1	C	73	GLN
1	B	53	GLN
1	B	55	GLN

5.3.3 RNA ⓘ

There are no RNA chains in this entry.

5.4 Non-standard residues in protein, DNA, RNA chains ⓘ

There are no non-standard protein/DNA/RNA residues in this entry.

5.5 Carbohydrates ⓘ

There are no carbohydrates in this entry.

5.6 Ligand geometry ⓘ

6 ligands are modelled in this entry.

In the following table, the Counts columns list the number of bonds (or angles) for which Mogul statistics could be retrieved, the number of bonds (or angles) that are observed in the model and the number of bonds (or angles) that are defined in the chemical component dictionary. The Link column lists molecule types, if any, to which the group is linked. The Z score for a bond length (or angle) is the number of standard deviations the observed value is removed from the expected value. A bond length (or angle) with $|Z| > 2$ is considered an outlier worth inspection. RMSZ is the root-mean-square of all Z scores of the bond lengths (or angles).

Mol	Type	Chain	Res	Link	Bond lengths			Bond angles		
					Counts	RMSZ	$\# Z > 2$	Counts	RMSZ	$\# Z > 2$
2	757	A	1000	-	65,65,65	1.27	6 (9%)	93,93,93	2.01	22 (23%)
3	IPA	A	1137	-	3,3,3	0.58	0	3,3,3	0.46	0
2	757	B	1000	-	65,65,65	1.15	3 (4%)	93,93,93	1.81	23 (24%)
3	IPA	B	1138	-	3,3,3	0.54	0	3,3,3	0.45	0
2	757	C	1000	-	65,65,65	1.13	3 (4%)	93,93,93	1.96	23 (24%)
3	IPA	C	1139	-	3,3,3	0.50	0	3,3,3	0.77	0

In the following table, the Chirals column lists the number of chiral outliers, the number of chiral centers analysed, the number of these observed in the model and the number defined in the chemical component dictionary. Similar counts are reported in the Torsion and Rings columns. '-' means no outliers of that kind were identified.

Mol	Type	Chain	Res	Link	Chirals	Torsions	Rings
2	757	A	1000	-	1/1/13/17	0/67/67/67	0/4/4/4
3	IPA	A	1137	-	-	0/0/0/0	0/0/0/0
2	757	B	1000	-	1/1/13/17	0/67/67/67	0/4/4/4
3	IPA	B	1138	-	-	0/0/0/0	0/0/0/0
2	757	C	1000	-	1/1/13/17	0/67/67/67	0/4/4/4
3	IPA	C	1139	-	-	0/0/0/0	0/0/0/0

The worst 5 of 12 bond length outliers are listed below:

Mol	Chain	Res	Type	Atoms	Z	Observed(Å)	Ideal(Å)
2	C	1000	757	C24-S23	-4.11	1.67	1.75
2	A	1000	757	C54-N53	-4.06	1.33	1.41
2	B	1000	757	C24-S23	-4.05	1.67	1.75
2	B	1000	757	S23-N21	-4.03	1.54	1.64
2	A	1000	757	C24-S23	-3.95	1.67	1.75

The worst 5 of 68 bond angle outliers are listed below:

Mol	Chain	Res	Type	Atoms	Z	Observed(°)	Ideal(°)
2	C	1000	757	O25-S23-O26	-7.84	107.73	118.68
2	A	1000	757	C43-C44-N46	6.30	124.29	116.25
2	A	1000	757	C14-N21-S23	6.12	126.02	118.45
2	B	1000	757	O25-S23-O26	-5.55	110.94	118.68
2	A	1000	757	O26-S23-N21	5.19	112.89	107.07

All (3) chirality outliers are listed below:

Mol	Chain	Res	Type	Atom
2	C	1000	757	C41
2	A	1000	757	C41
2	B	1000	757	C41

There are no torsion outliers.

There are no ring outliers.

5.7 Other polymers ⓘ

There are no such residues in this entry.

5.8 Polymer linkage issues

There are no chain breaks in this entry.

6 Fit of model and data ⓘ

6.1 Protein, DNA and RNA chains ⓘ

In the following table, the column labelled ‘#RSRZ > 2’ contains the number (and percentage) of RSRZ outliers, followed by percent RSRZ outliers for the chain as percentile scores relative to all X-ray entries and entries of similar resolution. The OWAB column contains the minimum, median, 95th percentile and maximum values of the occupancy-weighted average B-factor per residue. The column labelled ‘Q < 0.9’ lists the number of (and percentage) of residues with an average occupancy less than 0.9.

Mol	Chain	Analysed	<RSRZ>	#RSRZ > 2		OWAB(Å ²)	Q < 0.9
1	A	369/406 (90%)	0.49	11 (2%)	48 45	37, 60, 85, 98	3 (0%)
1	B	368/406 (90%)	0.59	18 (4%)	28 25	46, 64, 95, 105	3 (0%)
1	C	367/406 (90%)	0.56	13 (3%)	42 38	45, 66, 88, 99	3 (0%)
All	All	1104/1218 (90%)	0.55	42 (3%)	38 35	37, 64, 89, 105	9 (0%)

The worst 5 of 42 RSRZ outliers are listed below:

Mol	Chain	Res	Type	RSRZ
1	B	9	LYS	5.7
1	B	10	SER	4.6
1	B	107	LYS	3.6
1	A	315	SER	3.2
1	B	316	GLN	3.0

6.2 Non-standard residues in protein, DNA, RNA chains ⓘ

There are no non-standard protein/DNA/RNA residues in this entry.

6.3 Carbohydrates ⓘ

There are no carbohydrates in this entry.

6.4 Ligands ⓘ

In the following table, the Atoms column lists the number of modelled atoms in the group and the number defined in the chemical component dictionary. LLDF column lists the quality of electron density of the group with respect to its neighbouring residues in protein, DNA or RNA chains. The B-factors column lists the minimum, median, 95th percentile and maximum values of B factors

of atoms in the group. The column labelled 'Q< 0.9' lists the number of atoms with occupancy less than 0.9.

Mol	Type	Chain	Res	Atoms	RSR	LLDF	B-factors(\AA^2)	Q<0.9
2	757	C	1000	62/62	0.23	-	38,50,60,61	12
2	757	A	1000	62/62	0.26	-	38,54,64,65	12
3	IPA	A	1137	4/4	0.18	-	42,44,45,47	0
3	IPA	B	1138	4/4	0.30	-	54,55,56,56	0
2	757	B	1000	62/62	0.24	-	49,58,67,69	12
3	IPA	C	1139	4/4	0.38	-	62,62,63,66	0

6.5 Other polymers

There are no such residues in this entry.