



# wwPDB X-ray Structure Validation Summary Report

Feb 27, 2014 – 10:42 PM GMT

PDB ID : 4DM6  
Title : Crystal structure of RARb LBD homodimer in complex with TTNPB  
Authors : Osz, J.; Brelivet, Y.; Peluso-Iltis, C.; Cura, V.; Eiler, S.; Ruff, M.; Bourguet, W.; Rochel, N.; Moras, D.  
Deposited on : 2012-02-07  
Resolution : 1.90 Å(reported)

This is a wwPDB validation summary report for a publicly released PDB entry.

We welcome your comments at [validation@mail.wwpdb.org](mailto:validation@mail.wwpdb.org)

A user guide is available at <http://wwpdb.org/ValidationPDFNotes.html>

---

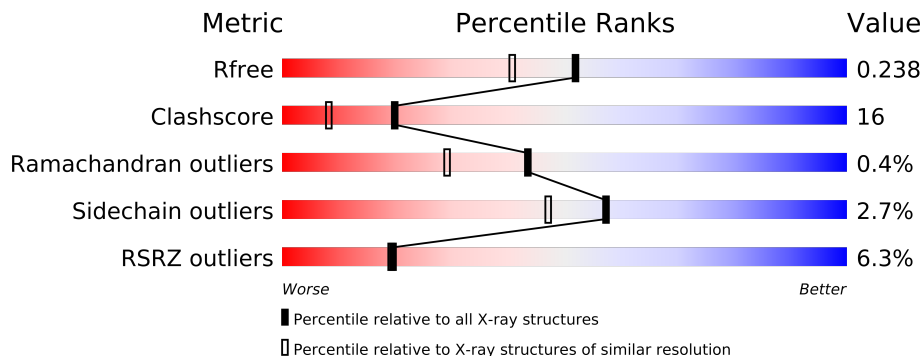
The following versions of software and data (see [references](#)) were used in the production of this report:

MolProbity	:	4.02b-467
Mogul	:	1.15 2013
Xtriage (Phenix)	:	dev-1323
EDS	:	stable22639
Percentile statistics	:	21963
Refmac	:	5.8.0049
CCP4	:	6.3.0 (Settle)
Ideal geometry (proteins)	:	Engh & Huber (2001)
Ideal geometry (DNA, RNA)	:	Parkinson et. al. (1996)
Validation Pipeline (wwPDB-VP)	:	stable22683

# 1 Overall quality at a glance

The reported resolution of this entry is 1.90 Å.

Percentile scores (ranging between 0-100) for global validation metrics of the entry are shown in the following graphic. The table shows the number of entries on which the scores are based.



Metric	Whole archive (#Entries)	Similar resolution (#Entries, resolution range(Å))
$R_{free}$	66092	3684 (1.90-1.90)
Clashscore	79885	4465 (1.90-1.90)
Ramachandran outliers	78287	4413 (1.90-1.90)
Sidechain outliers	78261	4414 (1.90-1.90)
RSRZ outliers	66119	3686 (1.90-1.90)

The table below summarises the geometric issues observed across the polymeric chains and their fit to the electron density. The red, orange, yellow and green segments on the lower bar indicate the fraction of residues that contain outliers for  $\geq 3$ , 2, 1 and 0 types of geometric quality criteria. The upper red bar (where present) indicates the fraction of residues that have poor fit to the electron density.

Mol	Chain	Length	Quality of chain
1	A	267	
1	B	267	
2	E	25	
2	F	25	

The following table lists non-polymeric compounds that are outliers for geometric or electron-density-fit criteria:

Mol	Type	Chain	Res	Geometry	Electron density
3	TTB	A	501	-	X
3	TTB	B	1501	-	X

## 2 Entry composition

There are 4 unique types of molecules in this entry. The entry contains 4203 atoms, of which 0 are hydrogen and 0 are deuterium.

In the tables below, the ZeroOcc column contains the number of atoms modelled with zero occupancy, the AltConf column contains the number of residues with at least one atom in alternate conformation and the Trace column contains the number of residues modelled with at most 2 atoms.

- Molecule 1 is a protein called Retinoic acid receptor beta.

Mol	Chain	Residues	Atoms					ZeroOcc	AltConf	Trace
1	A	240	Total	C	N	O	S	5	0	0
			1894	1205	318	356	15			
1	B	239	Total	C	N	O	S	2	0	0
			1890	1204	317	354	15			

There are 42 discrepancies between the modelled and reference sequences:

Chain	Residue	Modelled	Actual	Comment	Reference
A	157	MET	-	INITIATING METHIONINE	UNP P10826
A	158	GLY	-	EXPRESSION TAG	UNP P10826
A	159	SER	-	EXPRESSION TAG	UNP P10826
A	160	SER	-	EXPRESSION TAG	UNP P10826
A	161	HIS	-	EXPRESSION TAG	UNP P10826
A	162	HIS	-	EXPRESSION TAG	UNP P10826
A	163	HIS	-	EXPRESSION TAG	UNP P10826
A	164	HIS	-	EXPRESSION TAG	UNP P10826
A	165	HIS	-	EXPRESSION TAG	UNP P10826
A	166	HIS	-	EXPRESSION TAG	UNP P10826
A	167	SER	-	EXPRESSION TAG	UNP P10826
A	168	SER	-	EXPRESSION TAG	UNP P10826
A	169	GLY	-	EXPRESSION TAG	UNP P10826
A	170	LEU	-	EXPRESSION TAG	UNP P10826
A	171	VAL	-	EXPRESSION TAG	UNP P10826
A	172	PRO	-	EXPRESSION TAG	UNP P10826
A	173	ARG	-	EXPRESSION TAG	UNP P10826
A	174	GLY	-	EXPRESSION TAG	UNP P10826
A	175	SER	-	EXPRESSION TAG	UNP P10826
A	176	HIS	-	EXPRESSION TAG	UNP P10826
A	177	MET	-	EXPRESSION TAG	UNP P10826
B	1157	MET	-	INITIATING METHIONINE	UNP P10826
B	1158	GLY	-	EXPRESSION TAG	UNP P10826
B	1159	SER	-	EXPRESSION TAG	UNP P10826
B	1160	SER	-	EXPRESSION TAG	UNP P10826

*Continued on next page...*

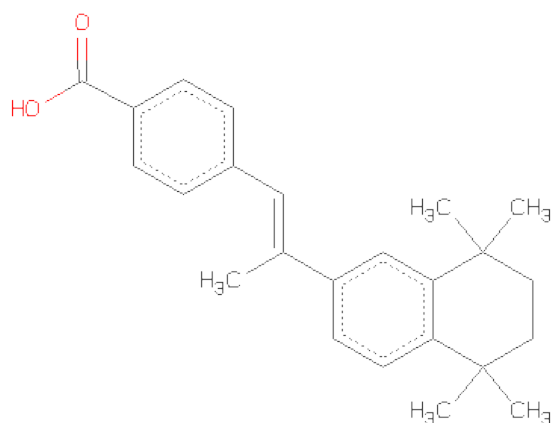
*Continued from previous page...*

Chain	Residue	Modelled	Actual	Comment	Reference
B	1161	HIS	-	EXPRESSION TAG	UNP P10826
B	1162	HIS	-	EXPRESSION TAG	UNP P10826
B	1163	HIS	-	EXPRESSION TAG	UNP P10826
B	1164	HIS	-	EXPRESSION TAG	UNP P10826
B	1165	HIS	-	EXPRESSION TAG	UNP P10826
B	1166	HIS	-	EXPRESSION TAG	UNP P10826
B	1167	SER	-	EXPRESSION TAG	UNP P10826
B	1168	SER	-	EXPRESSION TAG	UNP P10826
B	1169	GLY	-	EXPRESSION TAG	UNP P10826
B	1170	LEU	-	EXPRESSION TAG	UNP P10826
B	1171	VAL	-	EXPRESSION TAG	UNP P10826
B	1172	PRO	-	EXPRESSION TAG	UNP P10826
B	1173	ARG	-	EXPRESSION TAG	UNP P10826
B	1174	GLY	-	EXPRESSION TAG	UNP P10826
B	1175	SER	-	EXPRESSION TAG	UNP P10826
B	1176	HIS	-	EXPRESSION TAG	UNP P10826
B	1177	MET	-	EXPRESSION TAG	UNP P10826

- Molecule 2 is a protein called Nuclear receptor coactivator 1.

Mol	Chain	Residues	Atoms				ZeroOcc	AltConf	Trace
2	E	11	Total	C	N	O	5	0	0
			91	59	20	12			
2	F	12	Total	C	N	O	6	0	0
			98	62	21	15			

- Molecule 3 is 4-[(1E)-2-(5,5,8,8-TETRAMETHYL-5,6,7,8-TETRAHYDRONAPHTHALEN-2-YL)PROP-1-ENYL]BENZOICACID (three-letter code: TTB) (formula: C<sub>24</sub>H<sub>28</sub>O<sub>2</sub>).



Mol	Chain	Residues	Atoms			ZeroOcc	AltConf
3	A	1	Total	C	O	0	0
			26	24	2		
3	B	1	Total	C	O	0	0
			26	24	2		

- Molecule 4 is water.

Mol	Chain	Residues	Atoms		ZeroOcc	AltConf
4	A	73	Total	O	0	0
			73	73		
4	B	103	Total	O	0	0
			103	103		
4	F	2	Total	O	0	0
			2	2		

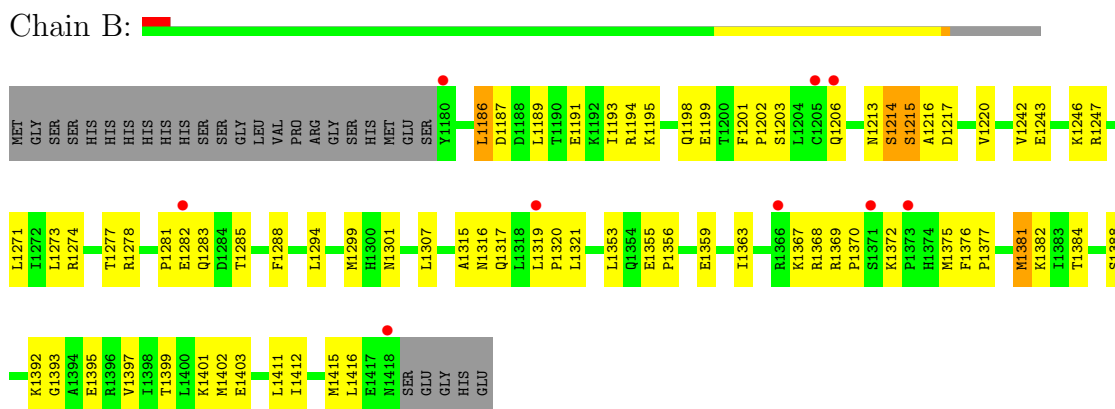
### 3 Residue-property plots

These plots are drawn for all protein, RNA and DNA chains in the entry. The first graphic for a chain summarises the proportions of errors displayed in the second graphic. The second graphic shows the sequence view annotated by issues in geometry and electron density. Residues are color-coded according to the number of geometric quality criteria for which they contain at least one outlier: green = 0, yellow = 1, orange = 2 and red = 3 or more. A red dot above a residue indicates a poor fit to the electron density ( $RSRZ > 2$ ). Stretches of 2 or more consecutive residues without any outlier are shown as a green connector. Residues present in the sample, but not in the model, are shown in grey.

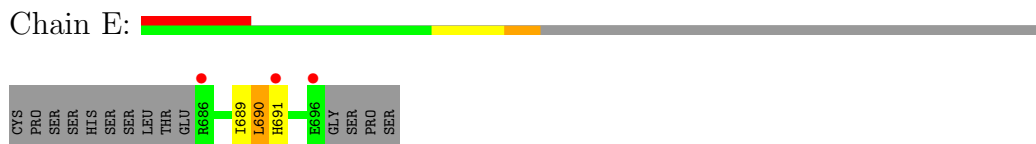
#### • Molecule 1: Retinoic acid receptor beta



#### • Molecule 1: Retinoic acid receptor beta



#### • Molecule 2: Nuclear receptor coactivator 1



#### • Molecule 2: Nuclear receptor coactivator 1



CYS	PRO	SER	SER	HIS	SER	SER	LEU	THR	GLU	R786	L794	Q795	E796	G797	SER	PRO	SER
-----	-----	-----	-----	-----	-----	-----	-----	-----	-----	------	------	------	------	------	-----	-----	-----

## 4 Data and refinement statistics

Property	Value	Source
Space group	P 21 21 21	Depositor
Cell constants a, b, c, $\alpha$ , $\beta$ , $\gamma$	58.09Å 84.06Å 102.14Å 90.00° 90.00° 90.00°	Depositor
Resolution (Å)	20.00 – 1.90 19.18 – 1.90	Depositor EDS
% Data completeness (in resolution range)	(Not available) (20.00-1.90) 99.8 (19.18-1.90)	Depositor EDS
$R_{merge}$	(Not available)	Depositor
$R_{sym}$	(Not available)	Depositor
$\langle I/\sigma(I) \rangle$ <sup>1</sup>	4.58 (at 1.90Å)	Xtriage
Refinement program	CNS 1.1	Depositor
R, $R_{free}$	0.206 , 0.239 0.211 , 0.238	Depositor DCC
$R_{free}$ test set	2003 reflections (5.00%)	DCC
Wilson B-factor (Å <sup>2</sup> )	27.9	Xtriage
Anisotropy	0.316	Xtriage
Bulk solvent $k_{sol}$ (e/Å <sup>3</sup> ), $B_{sol}$ (Å <sup>2</sup> )	0.40 , 49.5	EDS
Estimated twinning fraction	No twinning to report.	Xtriage
L-test for twinning	$\langle  L  \rangle = 0.45$ , $\langle L^2 \rangle = 0.27$	Xtriage
Outliers	0 of 40048 reflections	Xtriage
$F_o, F_c$ correlation	0.95	EDS
Total number of atoms	4203	wwPDB-VP
Average B, all atoms (Å <sup>2</sup> )	33.0	wwPDB-VP

Xtriage's analysis on translational NCS is as follows: *The largest off-origin peak in the Patterson function is 4.70% of the height of the origin peak. No significant pseudotranslation is detected.*

<sup>1</sup>Intensities estimated from amplitudes.



## 5 Model quality ⓘ

### 5.1 Standard geometry ⓘ

Bond lengths and bond angles in the following residue types are not validated in this section: TTb

The Z score for a bond length (or angle) is the number of standard deviations the observed value is removed from the expected value. A bond length (or angle) with  $|Z| > 5$  is considered an outlier worth inspection. RMSZ is the root-mean-square of all Z scores of the bond lengths (or angles).

Mol	Chain	Bond lengths		Bond angles	
		RMSZ	# $ Z  > 5$	RMSZ	# $ Z  > 5$
1	A	0.55	6/1924 (0.3%)	0.56	1/2598 (0.0%)
1	B	0.66	7/1921 (0.4%)	0.57	1/2595 (0.0%)
2	E	1.52	3/92 (3.3%)	0.79	0/122
2	F	2.59	9/99 (9.1%)	1.01	0/130
All	All	0.75	25/4036 (0.6%)	0.59	2/5445 (0.0%)

The worst 5 of 25 bond length outliers are listed below:

Mol	Chain	Res	Type	Atoms	Z	Observed(Å)	Ideal(Å)
2	F	796	GLU	CB-CG	-11.19	1.30	1.52
1	B	1215	SER	C-O	-10.25	1.03	1.23
2	F	794	LEU	C-O	-9.58	1.05	1.23
1	B	1214	SER	C-O	-9.17	1.05	1.23
1	B	1216	ALA	C-O	-8.37	1.07	1.23

All (2) bond angle outliers are listed below:

Mol	Chain	Res	Type	Atoms	Z	Observed(°)	Ideal(°)
1	B	1215	SER	N-CA-C	6.77	129.29	111.00
1	A	373	PRO	N-CA-CB	5.52	109.93	103.30

There are no chirality outliers.

There are no planarity outliers.

### 5.2 Close contacts ⓘ

In the following table, the Non-H and H(model) columns list the number of non-hydrogen atoms and hydrogen atoms in the chain respectively. The H(added) column lists the number of hydrogens added by MolProbity. The Clashes column lists the number of clashes within the asymmetric unit,

and the number in parentheses is this value normalized per 1000 atoms of the molecule in the chain. The Symm-Clashes column gives symmetry related clashes, in the same way as for the Clashes column.

Mol	Chain	Non-H	H(model)	H(added)	Clashes	Symm-Clashes
1	A	1894	0	1955	68	0
1	B	1890	0	1956	67	0
2	E	91	0	95	2	0
2	F	98	0	101	0	0
3	A	26	0	27	1	0
3	B	26	0	27	3	0
4	A	73	0	0	1	0
4	B	103	0	0	2	0
4	F	2	0	0	1	0
All	All	4203	0	4161	130	0

Clashscore is defined as the number of clashes calculated for the entry per 1000 atoms (including hydrogens) of the entry. The overall clashscore for this entry is 16.

The worst 5 of 130 close contacts within the same asymmetric unit are listed below.

Atom-1	Atom-2	Distance(Å)	Clash(Å)
1:B:1382:LYS:HE2	1:B:1382:LYS:HA	1.44	0.99
1:A:255:THR:HG23	1:A:258:ASP:H	1.32	0.94
1:B:1186:LEU:HD23	1:B:1363:ILE:HD12	1.49	0.94
1:B:1294:LEU:HD12	1:B:1299:MET:HE3	1.54	0.87
1:B:1412:ILE:O	1:B:1416:LEU:HD23	1.73	0.87

There are no symmetry-related clashes.

## 5.3 Torsion angles

### 5.3.1 Protein backbone ⓘ

In the following table, the Percentiles column shows the percent Ramachandran outliers of the chain as a percentile score with respect to all X-ray entries followed by that with respect to entries of similar resolution. The Analysed column shows the number of residues for which the backbone conformation was analysed, and the total number of residues.

Mol	Chain	Analysed	Favoured	Allowed	Outliers	Percentiles	
1	A	238/267 (89%)	227 (95%)	10 (4%)	1 (0%)	43	29
1	B	237/267 (89%)	231 (98%)	5 (2%)	1 (0%)	43	29
2	E	9/25 (36%)	8 (89%)	1 (11%)	0	100	100

*Continued on next page...*

*Continued from previous page...*

Mol	Chain	Analysed	Favoured	Allowed	Outliers	Percentiles	
2	F	10/25 (40%)	9 (90%)	1 (10%)	0	100	100
All	All	494/584 (85%)	475 (96%)	17 (3%)	2 (0%)	43	29

All (2) Ramachandran outliers are listed below:

Mol	Chain	Res	Type
1	B	1215	SER
1	A	215	SER

### 5.3.2 Protein sidechains ⓘ

In the following table, the Percentiles column shows the percent sidechain outliers of the chain as a percentile score with respect to all X-ray entries followed by that with respect to entries of similar resolution. The Analysed column shows the number of residues for which the sidechain conformation was analysed, and the total number of residues.

Mol	Chain	Analysed	Rotameric	Outliers	Percentiles	
1	A	213/238 (90%)	207 (97%)	6 (3%)	56	45
1	B	213/238 (90%)	208 (98%)	5 (2%)	63	55
2	E	9/24 (38%)	9 (100%)	0	100	100
2	F	10/24 (42%)	9 (90%)	1 (10%)	11	4
All	All	445/524 (85%)	433 (97%)	12 (3%)	57	47

5 of 12 residues with a non-rotameric sidechain are listed below:

Mol	Chain	Res	Type
1	A	374	HIS
1	B	1186	LEU
1	B	1381	MET
1	A	369	ARG
1	B	1214	SER

Some sidechains can be flipped to improve hydrogen bonding and reduce clashes. All (5) such sidechains are listed below:

Mol	Chain	Res	Type
1	A	218	HIS
1	A	316	ASN
1	A	342	GLN

*Continued on next page...*

*Continued from previous page...*

Mol	Chain	Res	Type
1	B	1206	GLN
1	B	1218	HIS

### 5.3.3 RNA ⓘ

There are no RNA chains in this entry.

## 5.4 Non-standard residues in protein, DNA, RNA chains ⓘ

There are no non-standard protein/DNA/RNA residues in this entry.

## 5.5 Carbohydrates ⓘ

There are no carbohydrates in this entry.

## 5.6 Ligand geometry ⓘ

2 ligands are modelled in this entry.

In the following table, the Counts columns list the number of bonds (or angles) for which Mogul statistics could be retrieved, the number of bonds (or angles) that are observed in the model and the number of bonds (or angles) that are defined in the chemical component dictionary. The Link column lists molecule types, if any, to which the group is linked. The Z score for a bond length (or angle) is the number of standard deviations the observed value is removed from the expected value. A bond length (or angle) with  $|Z| > 2$  is considered an outlier worth inspection. RMSZ is the root-mean-square of all Z scores of the bond lengths (or angles).

Mol	Type	Chain	Res	Link	Bond lengths			Bond angles		
					Counts	RMSZ	$\# Z  > 2$	Counts	RMSZ	$\# Z  > 2$
3	TTB	A	501	-	28,28,28	6.86	22 (78%)	43,43,43	0.98	2 (4%)
3	TTB	B	1501	-	28,28,28	6.33	20 (71%)	43,43,43	0.98	2 (4%)

In the following table, the Chirals column lists the number of chiral outliers, the number of chiral centers analysed, the number of these observed in the model and the number defined in the chemical component dictionary. Similar counts are reported in the Torsion and Rings columns. '-' means no outliers of that kind were identified.

Mol	Type	Chain	Res	Link	Chirals	Torsions	Rings
3	TTB	A	501	-	-	0/12/31/31	0/1/3/3
3	TTB	B	1501	-	-	0/12/31/31	0/1/3/3

The worst 5 of 42 bond length outliers are listed below:

Mol	Chain	Res	Type	Atoms	Z	Observed(Å)	Ideal(Å)
3	A	501	TTB	C12-C11	17.03	1.68	1.39
3	B	1501	TTB	C13-C14	13.52	1.59	1.39
3	A	501	TTB	C15-C14	12.91	1.64	1.40
3	A	501	TTB	C9-C7	12.01	1.60	1.39
3	B	1501	TTB	C12-C11	11.54	1.59	1.39

All (4) bond angle outliers are listed below:

Mol	Chain	Res	Type	Atoms	Z	Observed(°)	Ideal(°)
3	B	1501	TTB	C21-C22-C14	2.99	115.21	110.38
3	A	501	TTB	C21-C22-C14	2.58	114.53	110.38
3	A	501	TTB	C4-C3-C2	2.46	139.80	129.32
3	B	1501	TTB	C20-C17-C15	2.01	113.63	110.38

There are no chirality outliers.

There are no torsion outliers.

There are no ring outliers.

## 5.7 Other polymers ⓘ

There are no such residues in this entry.

## 5.8 Polymer linkage issues

There are no chain breaks in this entry.

## 6 Fit of model and data

### 6.1 Protein, DNA and RNA chains

In the following table, the column labelled ‘#RSRZ> 2’ contains the number (and percentage) of RSRZ outliers, followed by percent RSRZ outliers for the chain as percentile scores relative to all X-ray entries and entries of similar resolution. The OWAB column contains the minimum, median, 95<sup>th</sup> percentile and maximum values of the occupancy-weighted average B-factor per residue. The column labelled ‘Q< 0.9’ lists the number of (and percentage) of residues with an average occupancy less than 0.9.

Mol	Chain	Analysed	<RSRZ>	#RSRZ>2	OWAB(Å <sup>2</sup> )	Q<0.9
1	A	240/267 (89%)	0.51	19 (7%) 13 12	19, 33, 63, 72	2 (0%)
1	B	239/267 (89%)	0.22	9 (3%) 38 40	16, 27, 49, 62	1 (0%)
2	E	11/25 (44%)	1.03	3 (27%) 1 1	34, 39, 59, 62	2 (18%)
2	F	12/25 (48%)	0.46	1 (8%) 11 11	24, 34, 49, 51	2 (16%)
All	All	502/584 (85%)	0.38	32 (6%) 19 18	16, 31, 56, 72	7 (1%)

The worst 5 of 32 RSRZ outliers are listed below:

Mol	Chain	Res	Type	RSRZ
1	A	371	SER	6.4
1	A	205	CYS	6.4
1	A	207	LEU	6.2
1	B	1205	CYS	6.1
1	A	370	PRO	5.7

### 6.2 Non-standard residues in protein, DNA, RNA chains

There are no non-standard protein/DNA/RNA residues in this entry.

### 6.3 Carbohydrates

There are no carbohydrates in this entry.

### 6.4 Ligands

In the following table, the Atoms column lists the number of modelled atoms in the group and the number defined in the chemical component dictionary. LLDF column lists the quality of electron density of the group with respect to its neighbouring residues in protein, DNA or RNA chains. The B-factors column lists the minimum, median, 95<sup>th</sup> percentile and maximum values of B factors

of atoms in the group. The column labelled 'Q < 0.9' lists the number of atoms with occupancy less than 0.9.

Mol	Type	Chain	Res	Atoms	RSR	LLDF	B-factors( $\text{\AA}^2$ )	Q<0.9
3	TTB	B	1501	26/26	0.18	2.49	25,30,34,35	0
3	TTB	A	501	26/26	0.17	2.40	30,36,43,44	0

## 6.5 Other polymers ⓘ

There are no such residues in this entry.