



Full wwPDB X-ray Structure Validation Report

Feb 28, 2014 – 12:06 PM GMT

PDB ID : 3DPM
Title : Structure of mature CPAF complexed with lactacystin
Authors : Chai, J.; Huang, Z.
Deposited on : 2008-07-09
Resolution : 2.35 Å(reported)

This is a full wwPDB validation report for a publicly released PDB entry.
We welcome your comments at validation@mail.wwpdb.org
A user guide is available at <http://wwpdb.org/ValidationPDFNotes.html>

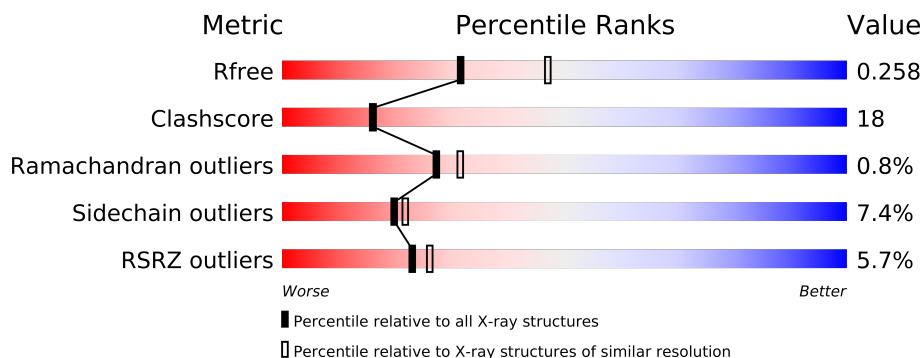
The following versions of software and data (see [references](#)) were used in the production of this report:

MolProbity : 4.02b-467
Mogul : 1.15 2013
Xtriage (Phenix) : dev-1323
EDS : stable22639
Percentile statistics : 21963
Refmac : 5.8.0049
CCP4 : 6.3.0 (Settle)
Ideal geometry (proteins) : Engh & Huber (2001)
Ideal geometry (DNA, RNA) : Parkinson et. al. (1996)
Validation Pipeline (wwPDB-VP) : stable22683

1 Overall quality at a glance

The reported resolution of this entry is 2.35 Å.

Percentile scores (ranging between 0-100) for global validation metrics of the entry are shown in the following graphic. The table shows the number of entries on which the scores are based.



Metric	Whole archive (#Entries)	Similar resolution (#Entries, resolution range(Å))
R_{free}	66092	3327 (2.40-2.32)
Clashscore	79885	1064 (2.38-2.34)
Ramachandran outliers	78287	1048 (2.38-2.34)
Sidechain outliers	78261	1049 (2.38-2.34)
RSRZ outliers	66119	3330 (2.40-2.32)

The table below summarises the geometric issues observed across the polymeric chains and their fit to the electron density. The red, orange, yellow and green segments on the lower bar indicate the fraction of residues that contain outliers for ≥ 3 , 2, 1 and 0 types of geometric quality criteria. The upper red bar (where present) indicates the fraction of residues that have poor fit to the electron density.

Mol	Chain	Length	Quality of chain
1	A	583	
1	B	583	

The following table lists non-polymeric compounds that are outliers for geometric or electron-density-fit criteria:

Mol	Type	Chain	Res	Geometry	Electron density
2	LAS	B	800	-	X

2 Entry composition

There are 3 unique types of molecules in this entry. The entry contains 8559 atoms, of which 0 are hydrogen and 0 are deuterium.

In the tables below, the ZeroOcc column contains the number of atoms modelled with zero occupancy, the AltConf column contains the number of residues with at least one atom in alternate conformation and the Trace column contains the number of residues modelled with at most 2 atoms.

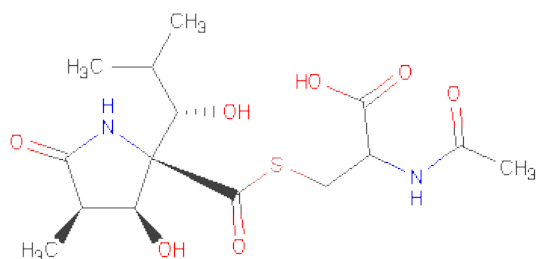
- Molecule 1 is a protein called Protein CT_858.

Mol	Chain	Residues	Atoms					ZeroOcc	AltConf	Trace
1	A	522	Total	C	N	O	S	0	0	0
			4110	2630	689	778	13			
1	B	522	Total	C	N	O	S	0	0	0
			4110	2630	689	778	13			

There are 12 discrepancies between the modelled and reference sequences:

Chain	Residue	Modelled	Actual	Comment	Reference
A	610	HIS	-	EXPRESSION TAG	UNP O84866
A	611	HIS	-	EXPRESSION TAG	UNP O84866
A	612	HIS	-	EXPRESSION TAG	UNP O84866
A	613	HIS	-	EXPRESSION TAG	UNP O84866
A	614	HIS	-	EXPRESSION TAG	UNP O84866
A	615	HIS	-	EXPRESSION TAG	UNP O84866
B	610	HIS	-	EXPRESSION TAG	UNP O84866
B	611	HIS	-	EXPRESSION TAG	UNP O84866
B	612	HIS	-	EXPRESSION TAG	UNP O84866
B	613	HIS	-	EXPRESSION TAG	UNP O84866
B	614	HIS	-	EXPRESSION TAG	UNP O84866
B	615	HIS	-	EXPRESSION TAG	UNP O84866

- Molecule 2 is N-ACETYL-S-({(2R,3S,4R)-3-HYDROXY-2-[(1S)-1-HYDROXY-2-METHYLPROPYL]-4-METHYL-5-OXOPYRROLIDIN-2-YL}CARBONYL)CYSTEINE (three-letter code: LAS) (formula: C₁₅H₂₄N₂O₇S).



Mol	Chain	Residues	Atoms				ZeroOcc	AltConf
2	A	1	Total	C	N	O	0	0
			15	10	1	4		
2	B	1	Total	C	N	O	0	0
			15	10	1	4		

- Molecule 3 is water.

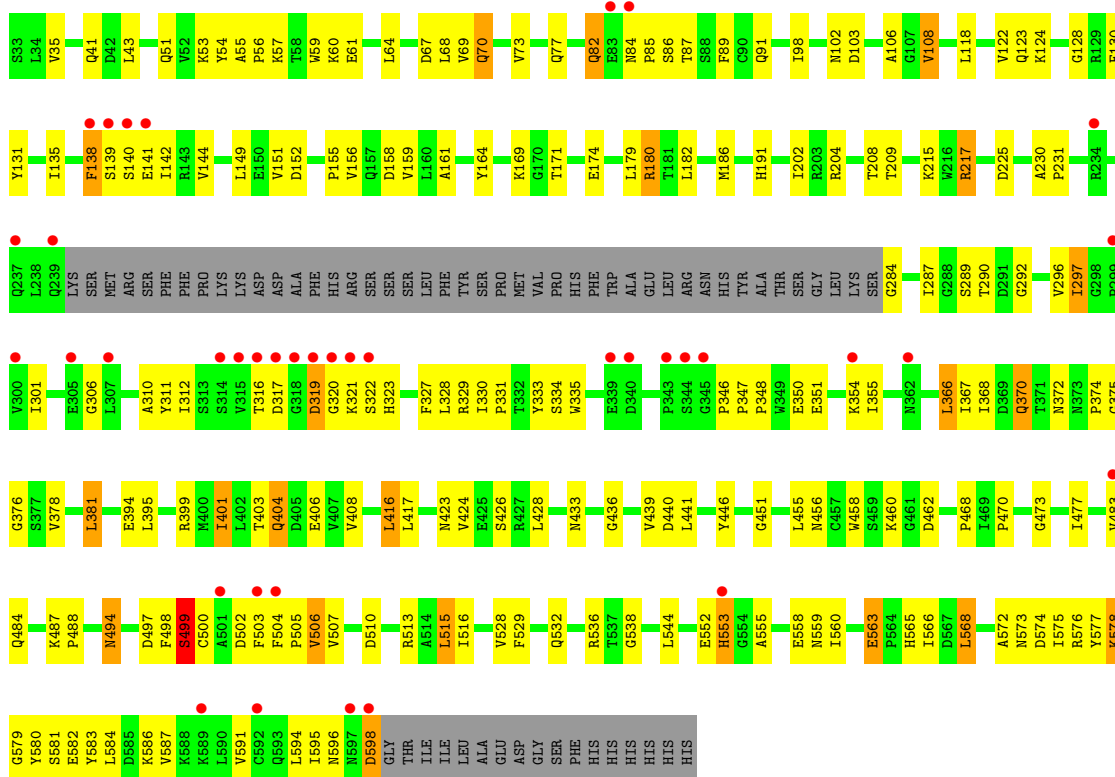
Mol	Chain	Residues	Atoms		ZeroOcc	AltConf
3	A	142	Total	O	0	0
			142	142		
3	B	167	Total	O	0	0
			167	167		

3 Residue-property plots

These plots are drawn for all protein, RNA and DNA chains in the entry. The first graphic for a chain summarises the proportions of errors displayed in the second graphic. The second graphic shows the sequence view annotated by issues in geometry and electron density. Residues are color-coded according to the number of geometric quality criteria for which they contain at least one outlier: green = 0, yellow = 1, orange = 2 and red = 3 or more. A red dot above a residue indicates a poor fit to the electron density ($RSRZ > 2$). Stretches of 2 or more consecutive residues without any outlier are shown as a green connector. Residues present in the sample, but not in the model, are shown in grey.

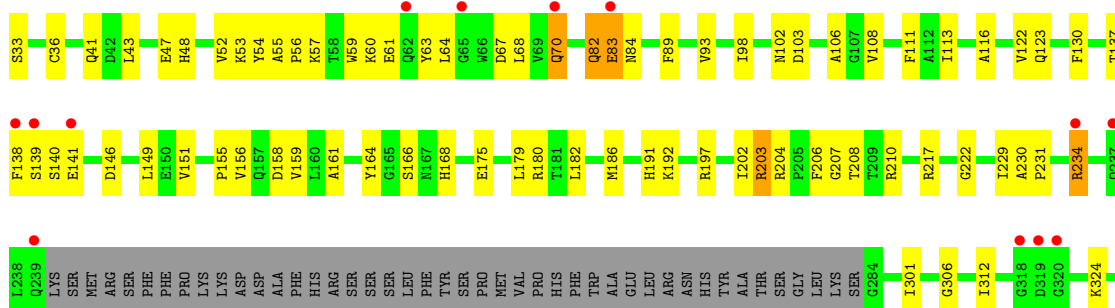
• Molecule 1: Protein CT_858

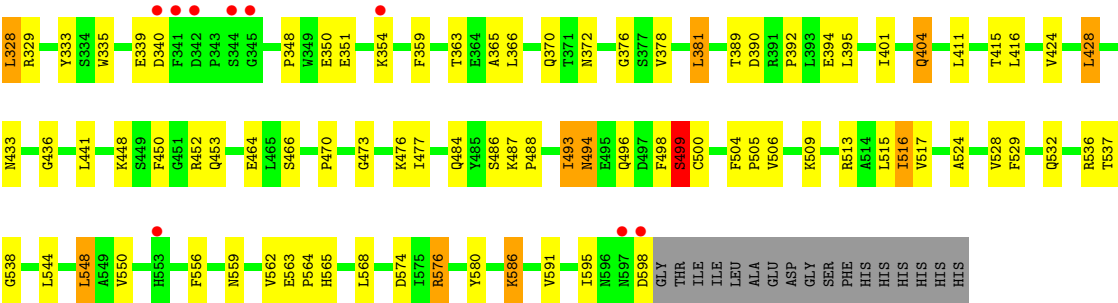
Chain A: 



• Molecule 1: Protein CT_858

Chain B: 





4 Data and refinement statistics

Property	Value	Source
Space group	P 21 21 21	Depositor
Cell constants a, b, c, α , β , γ	63.64Å 112.07Å 164.13Å 90.00° 90.00° 90.00°	Depositor
Resolution (Å)	20.00 – 2.35 33.11 – 2.33	Depositor EDS
% Data completeness (in resolution range)	(Not available) (20.00-2.35) 98.1 (33.11-2.33)	Depositor EDS
R_{merge}	0.10	Depositor
R_{sym}	(Not available)	Depositor
$\langle I/\sigma(I) \rangle$ ¹	2.44 (at 2.34Å)	Xtriage
Refinement program	CNS 1.1	Depositor
R, R_{free}	0.230 , 0.259 0.228 , 0.258	Depositor DCC
R_{free} test set	1472 reflections (2.98%)	DCC
Wilson B-factor (Å ²)	24.2	Xtriage
Anisotropy	0.512	Xtriage
Bulk solvent k_{sol} (e/Å ³), B_{sol} (Å ²)	0.39 , 21.7	EDS
Estimated twinning fraction	No twinning to report.	Xtriage
L-test for twinning	$\langle L \rangle = 0.49$, $\langle L^2 \rangle = 0.33$	Xtriage
Outliers	1 of 50284 reflections (0.002%)	Xtriage
F_o, F_c correlation	0.92	EDS
Total number of atoms	8559	wwPDB-VP
Average B, all atoms (Å ²)	26.0	wwPDB-VP

Xtriage's analysis on translational NCS is as follows: *The largest off-origin peak in the Patterson function is 3.74% of the height of the origin peak. No significant pseudotranslation is detected.*

¹Intensities estimated from amplitudes.

5 Model quality

5.1 Standard geometry

Bond lengths and bond angles in the following residue types are not validated in this section: LAS

The Z score for a bond length (or angle) is the number of standard deviations the observed value is removed from the expected value. A bond length (or angle) with $|Z| > 5$ is considered an outlier worth inspection. RMSZ is the root-mean-square of all Z scores of the bond lengths (or angles).

Mol	Chain	Bond lengths		Bond angles	
		RMSZ	$\# Z > 5$	RMSZ	$\# Z > 5$
1	A	0.40	0/4208	0.64	1/5720 (0.0%)
1	B	0.41	0/4208	0.66	1/5720 (0.0%)
All	All	0.41	0/8416	0.65	2/11440 (0.0%)

Chiral center outliers are detected by calculating the chiral volume of a chiral center and verifying if the center is modelled as a planar moiety or with the opposite hand. A planarity outlier is detected by checking planarity of atoms in a peptide group, atoms in a mainchain group or atoms of a sidechain that are expected to be planar.

Mol	Chain	#Chirality outliers	#Planarity outliers
1	A	0	1
1	B	0	1
All	All	0	2

There are no bond length outliers.

All (2) bond angle outliers are listed below:

Mol	Chain	Res	Type	Atoms	Z	Observed(°)	Ideal(°)
1	B	192	LYS	N-CA-C	-5.19	96.98	111.00
1	A	217	ARG	N-CA-C	-5.17	97.05	111.00

There are no chirality outliers.

All (2) planarity outliers are listed below:

Mol	Chain	Res	Type	Group
1	A	499	SER	Mainchain
1	B	499	SER	Mainchain

5.2 Close contacts ⓘ

In the following table, the Non-H and H(model) columns list the number of non-hydrogen atoms and hydrogen atoms in the chain respectively. The H(added) column lists the number of hydrogens added by MolProbity. The Clashes column lists the number of clashes within the asymmetric unit, and the number in parentheses is this value normalized per 1000 atoms of the molecule in the chain. The Symm-Clashes column gives symmetry related clashes, in the same way as for the Clashes column.

Mol	Chain	Non-H	H(model)	H(added)	Clashes	Symm-Clashes
1	A	4110	0	4047	163	0
1	B	4110	0	4047	145	0
2	A	15	0	16	10	0
2	B	15	0	16	10	0
3	A	142	0	0	3	0
3	B	167	0	0	2	0
All	All	8559	0	8126	300	0

Clashscore is defined as the number of clashes calculated for the entry per 1000 atoms (including hydrogens) of the entry. The overall clashscore for this entry is 18.

All (300) close contacts within the same asymmetric unit are listed below.

Atom-1	Atom-2	Distance(Å)	Clash(Å)
1:A:553:HIS:CE1	1:A:555:ALA:HB3	1.73	1.21
1:A:553:HIS:CE1	1:A:555:ALA:CB	2.45	0.99
1:A:124:LYS:HE2	1:A:128:GLY:HA2	1.49	0.94
1:B:516:ILE:H	1:B:565:HIS:HD2	1.12	0.94
1:A:553:HIS:HE1	1:A:555:ALA:HB3	1.08	0.94
1:A:82:GLN:HG3	1:A:89:PHE:CZ	2.09	0.87
1:B:359:PHE:O	1:B:363:THR:HG22	1.77	0.84
1:A:516:ILE:H	1:A:565:HIS:HD2	1.25	0.84
1:A:378:VAL:HG22	2:A:800:LAS:H16	1.63	0.79
1:B:576:ARG:HB3	1:B:576:ARG:HH11	1.47	0.79
1:A:186:MET:H	1:A:191:HIS:HD2	1.29	0.78
1:A:60:LYS:NZ	1:A:559:ASN:HD21	1.82	0.77
1:A:366:LEU:HD13	1:A:368:ILE:HD11	1.66	0.76
1:B:516:ILE:H	1:B:565:HIS:CD2	2.02	0.76
1:B:500:CYS:SG	2:B:800:LAS:C16	2.74	0.75
1:B:378:VAL:HG22	2:B:800:LAS:H16	1.70	0.74
1:A:60:LYS:HZ2	1:A:559:ASN:HD21	1.32	0.74
1:A:587:VAL:O	1:A:591:VAL:HG23	1.87	0.73
1:B:515:LEU:HD12	1:B:517:VAL:HG23	1.71	0.73
1:B:365:ALA:HB2	1:B:595:ILE:HD11	1.72	0.72
1:A:59:TRP:HE1	1:A:559:ASN:HD22	1.37	0.72

Continued on next page...

Continued from previous page...

Atom-1	Atom-2	Distance(Å)	Clash(Å)
1:B:378:VAL:CG2	2:B:800:LAS:H12	2.19	0.72
1:A:64:LEU:HD23	1:A:169:LYS:HD2	1.71	0.72
1:A:536:ARG:HA	1:B:404:GLN:HE22	1.55	0.71
1:B:591:VAL:O	1:B:595:ILE:HD13	1.91	0.70
1:B:186:MET:H	1:B:191:HIS:HD2	1.38	0.70
1:A:367:ILE:HD11	1:A:591:VAL:HG21	1.71	0.70
1:B:404:GLN:NE2	1:B:404:GLN:H	1.89	0.70
2:B:800:LAS:C18	2:B:800:LAS:H16B	2.21	0.70
1:A:462:ASP:HB2	1:B:234:ARG:HH21	1.55	0.69
1:A:404:GLN:HE22	1:B:536:ARG:HA	1.58	0.69
1:A:67:ASP:OD2	1:A:70:GLN:HB2	1.92	0.69
1:B:203:ARG:CZ	1:B:207:GLY:HA2	2.23	0.68
1:A:516:ILE:H	1:A:565:HIS:CD2	2.09	0.68
1:A:186:MET:H	1:A:191:HIS:CD2	2.12	0.68
1:B:54:TYR:CZ	1:B:56:PRO:HG2	2.27	0.68
1:A:155:PRO:HG2	1:A:158:ASP:OD2	1.94	0.67
1:A:297:ILE:H	1:A:297:ILE:HD13	1.60	0.67
1:B:378:VAL:HG21	2:B:800:LAS:H12	1.77	0.67
1:B:378:VAL:CG2	2:B:800:LAS:H16	2.25	0.66
1:A:503:PHE:O	1:A:506:VAL:HG12	1.96	0.66
1:A:433:ASN:HD22	1:A:436:GLY:H	1.43	0.66
1:B:493:ILE:HD13	1:B:517:VAL:O	1.96	0.66
1:A:378:VAL:CG2	2:A:800:LAS:H16	2.26	0.65
1:B:57:LYS:O	1:B:61:GLU:HG3	1.96	0.65
1:A:574:ASP:OD1	1:A:580:TYR:HA	1.97	0.65
1:A:433:ASN:ND2	1:A:436:GLY:H	1.94	0.64
1:A:335:TRP:HB2	1:A:348:PRO:HG3	1.80	0.64
1:A:161:ALA:HA	1:A:164:TYR:CD2	2.32	0.64
1:A:51:GLN:NE2	1:A:68:LEU:HD23	2.13	0.64
1:B:576:ARG:HH11	1:B:576:ARG:CB	2.11	0.63
1:A:498:PHE:O	1:A:499:SER:C	2.37	0.63
1:A:171:THR:OG1	1:A:174:GLU:HG3	1.98	0.63
1:A:376:GLY:O	2:A:800:LAS:H16B	1.98	0.63
1:A:433:ASN:HA	1:A:439:VAL:HG23	1.81	0.63
1:B:82:GLN:O	1:B:83:GLU:HG3	1.98	0.63
1:A:367:ILE:HD11	1:A:591:VAL:CG2	2.29	0.62
1:B:433:ASN:HD22	1:B:436:GLY:H	1.45	0.62
1:B:186:MET:H	1:B:191:HIS:CD2	2.18	0.62
1:A:462:ASP:HB2	1:B:234:ARG:NH2	2.14	0.61
1:A:316:THR:HG22	1:A:322:SER:OG	1.99	0.61
1:B:509:LYS:NZ	1:B:563:GLU:HG2	2.15	0.61
1:A:131:TYR:CE2	1:A:576:ARG:HG2	2.35	0.61

Continued on next page...

Continued from previous page...

Atom-1	Atom-2	Distance(Å)	Clash(Å)
1:A:323:HIS:ND1	1:A:595:ILE:HG21	2.15	0.61
1:B:493:ILE:HD12	1:B:516:ILE:HG23	1.81	0.61
1:A:122:VAL:HG11	1:A:130:PHE:HB3	1.83	0.61
1:A:376:GLY:N	2:A:800:LAS:O19	2.35	0.60
1:A:124:LYS:CE	1:A:128:GLY:HA2	2.27	0.60
1:B:563:GLU:H	1:B:563:GLU:CD	2.04	0.60
1:B:53:LYS:HB3	1:B:529:PHE:CZ	2.35	0.60
1:B:500:CYS:SG	2:B:800:LAS:H16	2.41	0.60
1:B:365:ALA:CB	1:B:595:ILE:HD11	2.32	0.60
1:A:404:GLN:CG	1:B:538:GLY:HA2	2.32	0.59
1:A:500:CYS:SG	2:A:800:LAS:C16	2.91	0.59
1:A:82:GLN:HG3	1:A:89:PHE:CE2	2.37	0.59
1:B:138:PHE:O	1:B:140:SER:N	2.35	0.59
1:A:568:LEU:HD11	1:A:586:LYS:HB3	1.84	0.59
1:A:529:PHE:CZ	1:A:544:LEU:HB2	2.38	0.59
1:B:335:TRP:HB2	1:B:348:PRO:HG3	1.85	0.58
1:B:515:LEU:HD12	1:B:517:VAL:CG2	2.33	0.58
1:A:54:TYR:CZ	1:A:56:PRO:HG2	2.37	0.58
1:B:328:LEU:HD13	1:B:328:LEU:C	2.24	0.58
1:B:487:LYS:HB3	1:B:488:PRO:HD2	1.85	0.58
1:A:87:THR:O	1:A:91:GLN:HG3	2.04	0.58
1:B:83:GLU:O	1:B:84:ASN:C	2.42	0.57
1:B:500:CYS:SG	2:B:800:LAS:H16B	2.44	0.57
1:A:500:CYS:SG	2:A:800:LAS:H16A	2.44	0.57
1:B:376:GLY:N	2:B:800:LAS:O19	2.32	0.57
1:A:53:LYS:HB3	1:A:529:PHE:CZ	2.39	0.57
1:A:135:ILE:HD11	1:A:142:ILE:HG22	1.87	0.56
1:A:60:LYS:NZ	1:A:559:ASN:ND2	2.53	0.56
1:A:180:ARG:NH1	3:A:801:HOH:O	2.36	0.56
1:B:470:PRO:HG2	1:B:473:GLY:HA2	1.87	0.56
1:B:506:VAL:HG23	1:B:562:VAL:CG2	2.36	0.56
1:B:155:PRO:HG2	1:B:158:ASP:OD2	2.06	0.56
1:A:306:GLY:HA3	1:A:351:GLU:OE2	2.06	0.56
1:B:493:ILE:HD11	1:B:564:PRO:HB3	1.86	0.56
1:B:141:GLU:O	1:B:204:ARG:NH2	2.38	0.56
1:B:401:ILE:HG13	1:B:464:GLU:O	2.06	0.55
1:A:287:ILE:HG22	1:A:374:PRO:HD3	1.88	0.55
1:A:536:ARG:HA	1:B:404:GLN:NE2	2.20	0.55
1:A:57:LYS:O	1:A:61:GLU:HG3	2.07	0.55
1:B:67:ASP:OD2	1:B:70:GLN:HB3	2.07	0.55
1:A:316:THR:HA	1:A:322:SER:HA	1.88	0.55
1:B:55:ALA:HB2	1:B:401:ILE:HD13	1.88	0.55

Continued on next page...

Continued from previous page...

Atom-1	Atom-2	Distance(Å)	Clash(Å)
1:A:138:PHE:O	1:A:140:SER:N	2.40	0.55
1:A:98:ILE:HG13	1:A:108:VAL:HG22	1.88	0.55
2:A:800:LAS:H16A	2:A:800:LAS:C18	2.38	0.54
1:B:122:VAL:HG11	1:B:130:PHE:HB3	1.90	0.54
1:A:470:PRO:HG2	1:A:473:GLY:HA2	1.88	0.54
1:B:424:VAL:HG12	1:B:428:LEU:HD22	1.88	0.54
1:A:573:ASN:OD1	1:A:576:ARG:NH2	2.41	0.54
1:A:284:GLY:N	1:A:292:GLY:O	2.41	0.54
1:B:493:ILE:HD13	1:B:493:ILE:H	1.73	0.53
2:B:800:LAS:C18	2:B:800:LAS:C16	2.86	0.53
1:A:297:ILE:HG22	1:A:584:LEU:HD22	1.91	0.53
1:A:131:TYR:CD2	1:A:576:ARG:HG2	2.44	0.53
1:A:563:GLU:CD	1:A:563:GLU:H	2.12	0.53
1:B:350:GLU:O	1:B:354:LYS:HG2	2.07	0.53
1:A:290:THR:O	1:A:329:ARG:HD3	2.08	0.53
1:B:98:ILE:HG13	1:B:108:VAL:CG2	2.39	0.53
1:A:487:LYS:HB3	1:A:488:PRO:HD2	1.91	0.53
1:A:404:GLN:HG3	1:B:538:GLY:HA2	1.90	0.52
1:B:576:ARG:NH1	1:B:576:ARG:CB	2.72	0.52
1:A:456:ASN:ND2	1:A:460:LYS:HE3	2.25	0.52
1:B:197:ARG:HG3	1:B:197:ARG:HH11	1.75	0.52
1:B:149:LEU:O	1:B:156:VAL:HG23	2.11	0.51
1:A:538:GLY:HA2	1:B:404:GLN:CG	2.40	0.51
1:A:333:TYR:CE2	1:A:381:LEU:HD23	2.45	0.51
1:A:451:GLY:O	1:A:455:LEU:HG	2.10	0.51
1:B:333:TYR:CE2	1:B:381:LEU:HD23	2.46	0.51
1:A:321:LYS:HD2	1:A:322:SER:N	2.26	0.51
1:B:161:ALA:HA	1:B:164:TYR:CE2	2.46	0.51
1:B:103:ASP:HB3	1:B:106:ALA:HB3	1.93	0.51
1:A:230:ALA:N	1:A:231:PRO:HD2	2.25	0.51
2:A:800:LAS:H11	3:A:907:HOH:O	2.11	0.51
1:A:404:GLN:H	1:A:404:GLN:NE2	2.09	0.51
1:B:404:GLN:CD	1:B:404:GLN:H	2.13	0.50
1:A:122:VAL:CG1	1:A:130:PHE:HB3	2.41	0.50
1:B:528:VAL:HG12	1:B:529:PHE:N	2.26	0.50
1:B:56:PRO:O	1:B:60:LYS:HG2	2.11	0.50
1:A:142:ILE:N	1:A:142:ILE:HD12	2.27	0.50
1:B:55:ALA:CB	1:B:401:ILE:HD13	2.42	0.50
1:A:558:GLU:O	1:A:559:ASN:HB2	2.12	0.49
1:B:506:VAL:HG23	1:B:562:VAL:HG21	1.95	0.49
1:B:122:VAL:HG12	1:B:123:GLN:N	2.27	0.49
1:A:440:ASP:OD2	1:A:441:LEU:N	2.46	0.49

Continued on next page...

Continued from previous page...

Atom-1	Atom-2	Distance(Å)	Clash(Å)
1:A:494:ASN:C	1:A:494:ASN:HD22	2.14	0.49
1:A:568:LEU:HD13	1:A:583:TYR:CD1	2.46	0.49
1:B:54:TYR:CE2	1:B:56:PRO:HG2	2.47	0.49
1:B:234:ARG:HD3	1:B:234:ARG:H	1.78	0.49
1:A:583:TYR:O	1:A:587:VAL:HG23	2.13	0.49
1:B:395:LEU:HD11	1:B:477:ILE:HG13	1.95	0.49
2:A:800:LAS:C16	2:A:800:LAS:C18	2.91	0.49
1:B:113:ILE:HG12	1:B:222:GLY:H	1.77	0.49
1:A:350:GLU:O	1:A:354:LYS:HG2	2.13	0.48
1:B:493:ILE:HD12	1:B:516:ILE:CG2	2.42	0.48
1:A:404:GLN:NE2	1:B:536:ARG:HA	2.26	0.48
1:A:381:LEU:O	1:A:381:LEU:HD22	2.14	0.48
1:B:301:ILE:CD1	1:B:324:LYS:HD3	2.44	0.48
1:A:149:LEU:O	1:A:156:VAL:HG23	2.14	0.48
1:B:411:LEU:O	1:B:415:THR:HG23	2.13	0.48
1:B:161:ALA:HA	1:B:164:TYR:CD2	2.48	0.48
1:B:450:PHE:HA	3:B:1030:HOH:O	2.14	0.48
1:B:59:TRP:HE1	1:B:559:ASN:HD22	1.61	0.48
1:B:433:ASN:ND2	1:B:436:GLY:H	2.09	0.47
1:B:202:ILE:C	1:B:202:ILE:HD12	2.34	0.47
1:B:206:PHE:HE1	1:B:208:THR:HG1	1.61	0.47
1:A:310:ALA:HA	1:A:327:PHE:O	2.14	0.47
1:A:144:VAL:HG11	1:A:578:LYS:HD3	1.95	0.47
1:A:297:ILE:CD1	1:A:297:ILE:H	2.26	0.47
1:A:55:ALA:CB	1:A:401:ILE:HD13	2.44	0.47
1:A:515:LEU:HD12	1:A:594:LEU:HD11	1.97	0.47
1:B:595:ILE:HD12	1:B:595:ILE:N	2.29	0.47
1:B:312:ILE:HD11	1:B:359:PHE:CD2	2.49	0.47
1:B:60:LYS:NZ	1:B:559:ASN:HD21	2.13	0.47
1:A:596:ASN:O	1:A:598:ASP:OD1	2.32	0.47
1:A:35:VAL:HG11	1:A:85:PRO:O	2.15	0.47
1:A:86:SER:HB2	1:A:225:ASP:OD2	2.15	0.47
1:A:553:HIS:CE1	1:A:555:ALA:H	2.33	0.47
1:B:203:ARG:NH2	1:B:207:GLY:HA2	2.30	0.47
1:A:499:SER:O	1:A:502:ASP:HB2	2.16	0.47
1:A:77:GLN:HA	1:A:77:GLN:OE1	2.14	0.47
1:B:137:THR:OG1	1:B:138:PHE:N	2.45	0.46
1:A:372:ASN:H	1:A:494:ASN:HD21	1.62	0.46
1:A:494:ASN:C	1:A:494:ASN:ND2	2.69	0.46
1:B:537:THR:HG22	1:B:537:THR:O	2.15	0.46
1:B:448:LYS:HB3	1:B:452:ARG:HH12	1.80	0.46
1:A:204:ARG:HG2	1:A:208:THR:O	2.16	0.46

Continued on next page...

Continued from previous page...

Atom-1	Atom-2	Distance(Å)	Clash(Å)
1:A:586:LYS:O	1:A:586:LYS:HD3	2.15	0.46
1:B:82:GLN:HG3	1:B:89:PHE:CE2	2.51	0.46
1:B:116:ALA:HA	1:B:217:ARG:O	2.15	0.46
1:B:516:ILE:CD1	1:B:516:ILE:N	2.79	0.46
1:A:103:ASP:HB3	1:A:106:ALA:HB3	1.97	0.46
1:A:504:PHE:HB3	1:A:505:PRO:CD	2.45	0.46
1:B:504:PHE:HB3	1:B:505:PRO:CD	2.45	0.46
1:A:458:TRP:O	1:B:229:ILE:HD13	2.16	0.46
1:A:296:VAL:HA	1:A:311:TYR:OH	2.16	0.46
1:B:151:VAL:HB	1:B:159:VAL:HG21	1.98	0.46
1:B:146:ASP:OD1	1:B:204:ARG:NH1	2.49	0.46
1:B:197:ARG:HG3	1:B:197:ARG:NH1	2.31	0.46
1:A:426:SER:OG	1:A:441:LEU:HA	2.16	0.46
1:B:448:LYS:HE2	1:B:452:ARG:HH22	1.80	0.46
1:A:141:GLU:O	1:A:204:ARG:NH1	2.38	0.46
1:A:395:LEU:HD21	1:A:477:ILE:HG12	1.98	0.45
1:A:301:ILE:HG12	1:A:312:ILE:O	2.16	0.45
1:A:215:LYS:O	1:A:217:ARG:NH1	2.49	0.45
1:B:202:ILE:HD12	1:B:202:ILE:O	2.16	0.45
1:B:504:PHE:HB3	1:B:505:PRO:HD3	1.98	0.45
1:B:339:GLU:O	1:B:340:ASP:HB2	2.16	0.45
1:B:515:LEU:CD1	1:B:517:VAL:HG23	2.44	0.45
1:A:460:LYS:O	1:B:234:ARG:NH1	2.50	0.45
1:A:151:VAL:HB	1:A:159:VAL:HG21	1.98	0.45
1:A:553:HIS:CE1	1:A:555:ALA:HB2	2.47	0.45
1:B:499:SER:H	1:B:524:ALA:HB3	1.81	0.45
1:B:138:PHE:C	1:B:138:PHE:CD1	2.89	0.45
1:B:506:VAL:HG23	1:B:562:VAL:HG22	1.99	0.45
1:B:63:TYR:CD2	1:B:64:LEU:HD23	2.52	0.44
1:B:57:LYS:NZ	1:B:61:GLU:OE2	2.50	0.44
1:B:141:GLU:HG2	1:B:204:ARG:NH2	2.33	0.44
1:A:408:VAL:HG21	1:B:111:PHE:HB3	1.99	0.44
1:B:306:GLY:HA3	1:B:351:GLU:OE2	2.17	0.44
1:B:55:ALA:HA	1:B:401:ILE:CD1	2.47	0.44
1:A:69:VAL:O	1:A:73:VAL:HG23	2.17	0.44
1:A:328:LEU:HD11	1:A:330:ILE:CD1	2.48	0.44
1:B:498:PHE:CD1	1:B:498:PHE:N	2.85	0.44
1:B:392:PRO:HB2	1:B:476:LYS:HD3	1.99	0.44
1:A:351:GLU:O	1:A:355:ILE:HG12	2.17	0.44
1:B:301:ILE:HD13	1:B:324:LYS:HD3	2.00	0.44
1:A:538:GLY:HA2	1:B:404:GLN:HG2	2.00	0.44
1:A:98:ILE:HG13	1:A:108:VAL:CG2	2.47	0.44

Continued on next page...

Continued from previous page...

Atom-1	Atom-2	Distance(Å)	Clash(Å)
1:A:64:LEU:CD2	1:A:169:LYS:HD2	2.45	0.44
1:A:82:GLN:HG2	3:A:841:HOH:O	2.17	0.44
1:A:53:LYS:HE3	1:A:403:THR:HG23	2.00	0.44
1:A:144:VAL:HG11	1:A:578:LYS:CD	2.48	0.44
1:B:498:PHE:O	1:B:499:SER:C	2.54	0.44
1:B:390:ASP:OD2	1:B:486:SER:CB	2.66	0.43
1:B:234:ARG:N	1:B:234:ARG:HD3	2.33	0.43
1:A:284:GLY:N	1:A:289:SER:HG	2.16	0.43
1:B:529:PHE:CZ	1:B:544:LEU:HB2	2.54	0.43
1:B:328:LEU:HD22	1:B:329:ARG:N	2.33	0.43
1:A:59:TRP:CH2	1:A:560:ILE:HD11	2.54	0.43
1:A:577:TYR:O	1:A:579:GLY:N	2.52	0.43
1:A:456:ASN:HD21	1:A:460:LYS:HE3	1.84	0.43
1:A:319:ASP:O	1:A:321:LYS:N	2.52	0.43
1:A:161:ALA:HA	1:A:164:TYR:CE2	2.54	0.42
1:B:82:GLN:HB3	1:B:83:GLU:H	1.57	0.42
1:B:33:SER:HB3	1:B:36:CYS:HB3	2.01	0.42
1:A:118:LEU:HA	1:A:118:LEU:HD23	1.91	0.42
1:A:577:TYR:CD2	1:A:577:TYR:N	2.86	0.42
1:B:47:GLU:HG3	1:B:68:LEU:HD11	2.01	0.42
1:A:394:GLU:HB2	1:A:552:GLU:OE2	2.19	0.42
1:A:399:ARG:HD2	1:A:468:PRO:HD3	2.00	0.42
1:B:548:LEU:HD13	1:B:556:PHE:CE2	2.55	0.42
1:B:301:ILE:HD11	1:B:312:ILE:HG21	2.01	0.42
1:B:89:PHE:O	1:B:93:VAL:HG23	2.19	0.42
1:A:566:ILE:HD12	1:A:566:ILE:N	2.35	0.42
1:A:209:THR:HG23	1:A:209:THR:O	2.20	0.42
1:A:123:GLN:NE2	1:A:575:ILE:HD12	2.34	0.42
1:B:48:HIS:O	1:B:52:VAL:HG23	2.18	0.42
1:A:60:LYS:HZ3	1:A:559:ASN:ND2	2.18	0.42
1:A:572:ALA:O	1:A:576:ARG:HG3	2.20	0.42
1:B:168:HIS:HD2	3:B:928:HOH:O	2.03	0.42
1:B:381:LEU:HG	1:B:500:CYS:HB3	2.02	0.42
1:A:297:ILE:HD13	1:A:297:ILE:N	2.30	0.42
1:B:389:THR:O	1:B:484:GLN:HB3	2.19	0.42
1:A:59:TRP:HH2	1:A:560:ILE:HD11	1.85	0.41
1:A:399:ARG:CD	1:A:468:PRO:HD3	2.50	0.41
1:B:586:LYS:C	1:B:586:LYS:HD3	2.40	0.41
1:A:131:TYR:CZ	1:A:576:ARG:HD3	2.56	0.41
1:A:404:GLN:H	1:A:404:GLN:CD	2.24	0.41
1:A:424:VAL:O	1:A:428:LEU:HD13	2.20	0.41
1:B:595:ILE:N	1:B:595:ILE:CD1	2.84	0.41

Continued on next page...

Continued from previous page...

Atom-1	Atom-2	Distance(Å)	Clash(Å)
1:B:208:THR:CG2	1:B:210:ARG:NE	2.83	0.41
1:A:370:GLN:O	1:A:497:ASP:OD1	2.39	0.41
1:B:180:ARG:HE	1:B:496:GLN:HE22	1.68	0.41
1:B:453:GLN:HE22	1:B:470:PRO:HD2	1.86	0.41
1:A:328:LEU:HD13	1:A:328:LEU:C	2.40	0.41
1:A:375:GLY:HA3	1:A:499:SER:HB3	2.03	0.41
1:A:573:ASN:HB2	1:A:582:GLU:OE2	2.20	0.41
1:A:290:THR:HA	1:A:331:PRO:HB3	2.02	0.41
1:B:574:ASP:CB	1:B:580:TYR:HA	2.51	0.41
1:B:55:ALA:HA	1:B:401:ILE:HD11	2.02	0.41
1:B:550:VAL:HG22	1:B:556:PHE:CD2	2.56	0.41
1:B:180:ARG:HA	1:B:180:ARG:HD3	1.76	0.41
1:B:372:ASN:H	1:B:494:ASN:HD21	1.69	0.41
1:A:416:LEU:O	1:A:416:LEU:HD22	2.21	0.41
1:B:230:ALA:HB3	1:B:231:PRO:CD	2.51	0.41
1:B:424:VAL:HG12	1:B:428:LEU:CD2	2.50	0.41
1:A:123:GLN:CD	1:A:575:ILE:HD12	2.41	0.41
1:A:506:VAL:CG1	1:A:507:VAL:N	2.84	0.40
1:A:346:PRO:HA	1:A:347:PRO:HD2	1.95	0.40
1:A:319:ASP:C	1:A:321:LYS:H	2.24	0.40
1:A:53:LYS:HE2	1:A:406:GLU:OE1	2.21	0.40
1:A:423:ASN:OD1	1:A:440:ASP:OD2	2.39	0.40
1:B:516:ILE:N	1:B:565:HIS:HD2	1.96	0.40
1:A:528:VAL:HG13	2:A:800:LAS:H5	2.03	0.40
1:A:328:LEU:HD12	1:A:368:ILE:HD12	2.02	0.40
1:A:416:LEU:HD13	1:A:417:LEU:HG	2.03	0.40
1:A:56:PRO:O	1:A:60:LYS:HG2	2.21	0.40

There are no symmetry-related clashes.

5.3 Torsion angles

5.3.1 Protein backbone ⓘ

In the following table, the Percentiles column shows the percent Ramachandran outliers of the chain as a percentile score with respect to all X-ray entries followed by that with respect to entries of similar resolution. The Analysed column shows the number of residues for which the backbone conformation was analysed, and the total number of residues.

Mol	Chain	Analysed	Favoured	Allowed	Outliers	Percentiles	
1	A	518/583 (89%)	488 (94%)	26 (5%)	4 (1%)	27	31

Continued on next page...

Continued from previous page...

Mol	Chain	Analysed	Favoured	Allowed	Outliers	Percentiles	
1	B	518/583 (89%)	489 (94%)	25 (5%)	4 (1%)	27	31
All	All	1036/1166 (89%)	977 (94%)	51 (5%)	8 (1%)	27	31

All (8) Ramachandran outliers are listed below:

Mol	Chain	Res	Type
1	A	317	ASP
1	A	578	LYS
1	B	83	GLU
1	B	139	SER
1	A	139	SER
1	A	320	GLY
1	B	82	GLN
1	B	466	SER

5.3.2 Protein sidechains ⓘ

In the following table, the Percentiles column shows the percent sidechain outliers of the chain as a percentile score with respect to all X-ray entries followed by that with respect to entries of similar resolution. The Analysed column shows the number of residues for which the sidechain conformation was analysed, and the total number of residues.

Mol	Chain	Analysed	Rotameric	Outliers	Percentiles	
1	A	452/506 (89%)	415 (92%)	37 (8%)	17	18
1	B	452/506 (89%)	422 (93%)	30 (7%)	24	26
All	All	904/1012 (89%)	837 (93%)	67 (7%)	20	22

All (67) residues with a non-rotameric sidechain are listed below:

Mol	Chain	Res	Type
1	A	41	GLN
1	A	43	LEU
1	A	70	GLN
1	A	82	GLN
1	A	84	ASN
1	A	102	ASN
1	A	108	VAL
1	A	138	PHE
1	A	152	ASP
1	A	179	LEU

Continued on next page...

Continued from previous page...

Mol	Chain	Res	Type
1	A	180	ARG
1	A	182	LEU
1	A	202	ILE
1	A	297	ILE
1	A	319	ASP
1	A	334	SER
1	A	366	LEU
1	A	370	GLN
1	A	381	LEU
1	A	401	ILE
1	A	404	GLN
1	A	416	LEU
1	A	446	TYR
1	A	483	VAL
1	A	484	GLN
1	A	494	ASN
1	A	499	SER
1	A	506	VAL
1	A	510	ASP
1	A	513	ARG
1	A	515	LEU
1	A	532	GLN
1	A	553	HIS
1	A	563	GLU
1	A	568	LEU
1	A	581	SER
1	A	598	ASP
1	B	41	GLN
1	B	43	LEU
1	B	70	GLN
1	B	102	ASN
1	B	166	SER
1	B	175	GLU
1	B	179	LEU
1	B	182	LEU
1	B	203	ARG
1	B	234	ARG
1	B	328	LEU
1	B	366	LEU
1	B	370	GLN
1	B	381	LEU
1	B	394	GLU

Continued on next page...

Continued from previous page...

Mol	Chain	Res	Type
1	B	404	GLN
1	B	416	LEU
1	B	428	LEU
1	B	441	LEU
1	B	493	ILE
1	B	494	ASN
1	B	499	SER
1	B	513	ARG
1	B	516	ILE
1	B	532	GLN
1	B	548	LEU
1	B	568	LEU
1	B	576	ARG
1	B	586	LYS
1	B	598	ASP

Some sidechains can be flipped to improve hydrogen bonding and reduce clashes. All (40) such sidechains are listed below:

Mol	Chain	Res	Type
1	A	48	HIS
1	A	51	GLN
1	A	82	GLN
1	A	84	ASN
1	A	102	ASN
1	A	123	GLN
1	A	167	ASN
1	A	168	HIS
1	A	191	HIS
1	A	239	GLN
1	A	286	ASN
1	A	404	GLN
1	A	433	ASN
1	A	453	GLN
1	A	456	ASN
1	A	494	ASN
1	A	496	GLN
1	A	532	GLN
1	A	559	ASN
1	A	565	HIS
1	A	596	ASN
1	B	48	HIS
1	B	62	GLN

Continued on next page...

Continued from previous page...

Mol	Chain	Res	Type
1	B	84	ASN
1	B	102	ASN
1	B	123	GLN
1	B	167	ASN
1	B	168	HIS
1	B	191	HIS
1	B	239	GLN
1	B	286	ASN
1	B	404	GLN
1	B	433	ASN
1	B	453	GLN
1	B	494	ASN
1	B	496	GLN
1	B	532	GLN
1	B	559	ASN
1	B	565	HIS
1	B	596	ASN

5.3.3 RNA ⓘ

There are no RNA chains in this entry.

5.4 Non-standard residues in protein, DNA, RNA chains ⓘ

There are no non-standard protein/DNA/RNA residues in this entry.

5.5 Carbohydrates ⓘ

There are no carbohydrates in this entry.

5.6 Ligand geometry ⓘ

2 ligands are modelled in this entry.

In the following table, the Counts columns list the number of bonds (or angles) for which Mogul statistics could be retrieved, the number of bonds (or angles) that are observed in the model and the number of bonds (or angles) that are defined in the chemical component dictionary. The Link column lists molecule types, if any, to which the group is linked. The Z score for a bond length (or angle) is the number of standard deviations the observed value is removed from the expected value. A bond length (or angle) with $|Z| > 2$ is considered an outlier worth inspection. RMSZ is the root-mean-square of all Z scores of the bond lengths (or angles).

Mol	Type	Chain	Res	Link	Bond lengths			Bond angles		
					Counts	RMSZ	# Z > 2	Counts	RMSZ	# Z > 2
2	LAS	A	800	1	15,15,25	5.19	4 (26%)	21,23,37	3.10	9 (42%)
2	LAS	B	800	1	15,15,25	4.53	2 (13%)	21,23,37	3.22	11 (52%)

In the following table, the Chirals column lists the number of chiral outliers, the number of chiral centers analysed, the number of these observed in the model and the number defined in the chemical component dictionary. Similar counts are reported in the Torsion and Rings columns. '-' means no outliers of that kind were identified.

Mol	Type	Chain	Res	Link	Chirals	Torsions	Rings
2	LAS	A	800	1	-	0/10/32/48	0/1/1/1
2	LAS	B	800	1	-	0/10/32/48	0/1/1/1

All (6) bond length outliers are listed below:

Mol	Chain	Res	Type	Atoms	Z	Observed(Å)	Ideal(Å)
2	A	800	LAS	O19-C18	19.53	1.24	1.11
2	B	800	LAS	O19-C18	17.05	1.23	1.11
2	A	800	LAS	C9-N8	2.87	1.50	1.46
2	A	800	LAS	C9-C18	2.54	1.53	1.48
2	A	800	LAS	C5-C6	2.30	1.54	1.52
2	B	800	LAS	C9-C18	2.23	1.52	1.48

All (20) bond angle outliers are listed below:

Mol	Chain	Res	Type	Atoms	Z	Observed(°)	Ideal(°)
2	A	800	LAS	C9-N8-C6	-8.37	107.05	115.24
2	B	800	LAS	C9-N8-C6	-7.01	108.39	115.24
2	A	800	LAS	C5-C6-N8	5.47	112.15	108.98
2	B	800	LAS	C10-C9-C18	-5.11	107.94	110.53
2	B	800	LAS	C10-C9-N8	5.10	117.85	112.69
2	A	800	LAS	C9-C3-C5	-4.80	100.37	104.44
2	B	800	LAS	C5-C6-N8	4.79	111.75	108.98
2	B	800	LAS	C20-C5-C3	-4.52	109.64	116.23
2	B	800	LAS	O7-C6-C5	-4.41	122.60	126.25
2	A	800	LAS	C20-C5-C3	-4.03	110.36	116.23
2	A	800	LAS	O7-C6-C5	-4.02	122.93	126.25
2	A	800	LAS	C10-C9-N8	3.49	116.23	112.69
2	A	800	LAS	C3-C9-N8	3.45	105.53	100.86
2	B	800	LAS	C9-C3-C5	-3.36	101.59	104.44
2	B	800	LAS	C16-C11-C10	-3.07	104.08	111.86
2	B	800	LAS	C20-C5-C6	-2.60	106.82	112.38
2	A	800	LAS	C12-C11-C10	-2.30	106.03	111.86

Continued on next page...

Continued from previous page...

Mol	Chain	Res	Type	Atoms	Z	Observed(°)	Ideal(°)
2	A	800	LAS	C9-C10-C11	2.27	119.49	115.58
2	B	800	LAS	C12-C11-C10	-2.24	106.18	111.86
2	B	800	LAS	O17-C10-C9	2.20	112.83	107.32

There are no chirality outliers.

There are no torsion outliers.

There are no ring outliers.

5.7 Other polymers ⓘ

There are no such residues in this entry.

5.8 Polymer linkage issues

There are no chain breaks in this entry.

6 Fit of model and data ⓘ

6.1 Protein, DNA and RNA chains ⓘ

In the following table, the column labelled ‘#RSRZ> 2’ contains the number (and percentage) of RSRZ outliers, followed by percent RSRZ outliers for the chain as percentile scores relative to all X-ray entries and entries of similar resolution. The OWAB column contains the minimum, median, 95th percentile and maximum values of the occupancy-weighted average B-factor per residue. The column labelled ‘Q< 0.9’ lists the number of (and percentage) of residues with an average occupancy less than 0.9.

Mol	Chain	Analysed	<RSRZ>	#RSRZ>2	OWAB(Å ²)	Q<0.9
1	A	522/583 (89%)	0.39	38 (7%) 15 17	9, 25, 55, 82	0
1	B	522/583 (89%)	0.19	22 (4%) 35 38	8, 22, 44, 71	0
All	All	1044/1166 (89%)	0.29	60 (5%) 23 26	8, 23, 51, 82	0

All (60) RSRZ outliers are listed below:

Mol	Chain	Res	Type	RSRZ
1	B	138	PHE	8.0
1	B	239	GLN	6.8
1	A	344	SER	6.6
1	A	239	GLN	6.6
1	A	598	ASP	6.2
1	B	318	GLY	6.1
1	A	139	SER	5.8
1	B	598	ASP	5.6
1	A	339	GLU	5.4
1	A	138	PHE	5.1
1	B	139	SER	5.0
1	A	300	VAL	4.8
1	A	345	GLY	4.7
1	A	314	SER	4.3
1	B	319	ASP	4.3
1	A	234	ARG	4.2
1	A	318	GLY	4.2
1	A	316	THR	3.8
1	A	320	GLY	3.8
1	B	553	HIS	3.8
1	A	321	LYS	3.6
1	A	501	ALA	3.5
1	A	322	SER	3.3
1	A	343	PRO	3.3

Continued on next page...

Continued from previous page...

Mol	Chain	Res	Type	RSRZ
1	A	317	ASP	3.3
1	A	592	CYS	3.1
1	A	305	GLU	3.0
1	A	140	SER	2.8
1	A	315	VAL	2.8
1	B	340	ASP	2.8
1	B	320	GLY	2.7
1	B	83	GLU	2.7
1	A	553	HIS	2.7
1	A	340	ASP	2.7
1	B	597	ASN	2.6
1	A	503	PHE	2.6
1	A	83	GLU	2.6
1	A	141	GLU	2.5
1	B	62	GLN	2.5
1	A	319	ASP	2.5
1	B	341	PHE	2.5
1	B	354	LYS	2.5
1	B	70	GLN	2.4
1	A	307	LEU	2.4
1	A	237	GLN	2.4
1	A	299	PRO	2.3
1	A	589	LYS	2.3
1	B	237	GLN	2.3
1	A	362	ASN	2.3
1	A	504	PHE	2.3
1	B	234	ARG	2.2
1	B	342	ASP	2.2
1	A	597	ASN	2.2
1	B	344	SER	2.2
1	B	141	GLU	2.1
1	A	84	ASN	2.1
1	B	65	GLY	2.1
1	B	345	GLY	2.1
1	A	354	LYS	2.1
1	A	483	VAL	2.0

6.2 Non-standard residues in protein, DNA, RNA chains ⓘ

There are no non-standard protein/DNA/RNA residues in this entry.

6.3 Carbohydrates

There are no carbohydrates in this entry.

6.4 Ligands

In the following table, the Atoms column lists the number of modelled atoms in the group and the number defined in the chemical component dictionary. LLDF column lists the quality of electron density of the group with respect to its neighbouring residues in protein, DNA or RNA chains. The B-factors column lists the minimum, median, 95th percentile and maximum values of B factors of atoms in the group. The column labelled 'Q< 0.9' lists the number of atoms with occupancy less than 0.9.

Mol	Type	Chain	Res	Atoms	RSR	LLDF	B-factors(Å ²)	Q<0.9
2	LAS	B	800	15/25	0.20	2.02	28,31,36,36	0
2	LAS	A	800	15/25	0.22	1.64	35,37,39,41	0

6.5 Other polymers

There are no such residues in this entry.