



Full wwPDB X-ray Structure Validation Report i

Feb 26, 2014 – 04:03 PM GMT

PDB ID : 2DRC
Title : INVESTIGATION OF THE FUNCTIONAL ROLE OF TRYPTOPHAN-22 IN ESCHERICHIA COLI DIHYDROFOLATE REDUCTASE BY SITE-DIRECTED MUTAGENESIS
Authors : Brown, K.A.; Kraut, J.
Deposited on : 1992-06-10
Resolution : 1.90 Å(reported)

This is a full wwPDB validation report for a publicly released PDB entry.
We welcome your comments at validation@mail.wwpdb.org
A user guide is available at <http://wwpdb.org/ValidationPDFNotes.html>

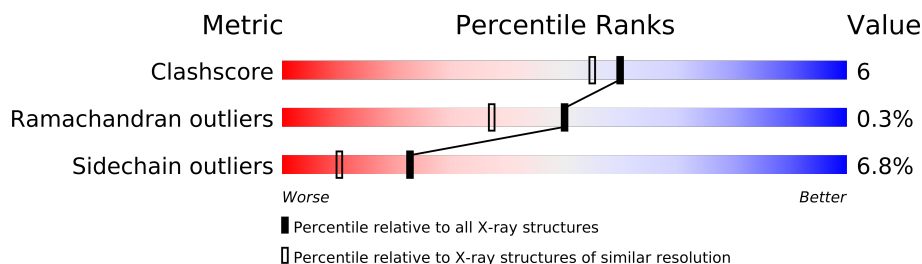
The following versions of software and data (see [references](#)) were used in the production of this report:

MolProbity : 4.02b-467
Mogul : 1.15 2013
Xtriage (Phenix) : **NOT EXECUTED**
EDS : **NOT EXECUTED**
Percentile statistics : 21963
Ideal geometry (proteins) : Engh & Huber (2001)
Ideal geometry (DNA, RNA) : Parkinson et. al. (1996)
Validation Pipeline (wwPDB-VP) : stable22683

1 Overall quality at a glance

The reported resolution of this entry is 1.90 Å.

Percentile scores (ranging between 0-100) for global validation metrics of the entry are shown in the following graphic. The table shows the number of entries on which the scores are based.



Metric	Whole archive (#Entries)	Similar resolution (#Entries, resolution range(Å))
Clashscore	79885	4465 (1.90-1.90)
Ramachandran outliers	78287	4413 (1.90-1.90)
Sidechain outliers	78261	4414 (1.90-1.90)

The table below summarises the geometric issues observed across the polymeric chains and their fit to the electron density. The red, orange, yellow and green segments on the lower bar indicate the fraction of residues that contain outliers for ≥ 3 , 2, 1 and 0 types of geometric quality criteria. The upper red bar (where present) indicates the fraction of residues that have poor fit to the electron density.

Note EDS was not executed.

Mol	Chain	Length	Quality of chain
1	A	159	
1	B	159	

2 Entry composition

There are 5 unique types of molecules in this entry. The entry contains 2619 atoms, of which 0 are hydrogen and 0 are deuterium.

In the tables below, the ZeroOcc column contains the number of atoms modelled with zero occupancy, the AltConf column contains the number of residues with at least one atom in alternate conformation and the Trace column contains the number of residues modelled with at most 2 atoms.

- Molecule 1 is a protein called DIHYDROFOLATE REDUCTASE.

Mol	Chain	Residues	Atoms					ZeroOcc	AltConf	Trace
1	A	159	Total	C	N	O	S	0	0	0
			1243	791	210	235	7			
1	B	159	Total	C	N	O	S	0	0	0
			1259	801	215	236	7			

There are 4 discrepancies between the modelled and reference sequences:

Chain	Residue	Modelled	Actual	Comment	Reference
A	22	PHE	TRP	CONFLICT	UNP P0ABQ4
A	37	ASP	ASN	CONFLICT	UNP P0ABQ4
B	22	PHE	TRP	CONFLICT	UNP P0ABQ4
B	37	ASP	ASN	CONFLICT	UNP P0ABQ4

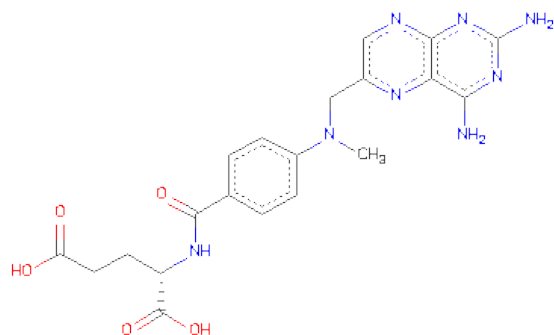
- Molecule 2 is CHLORIDE ION (three-letter code: CL) (formula: Cl).

Mol	Chain	Residues	Atoms		ZeroOcc	AltConf
2	B	1	Total	Cl	0	0
			1	1		
2	A	1	Total	Cl	0	0
			1	1		

- Molecule 3 is CALCIUM ION (three-letter code: CA) (formula: Ca).

Mol	Chain	Residues	Atoms		ZeroOcc	AltConf
3	B	1	Total	Ca	0	0
			1	1		

- Molecule 4 is METHOTREXATE (three-letter code: MTX) (formula: C₂₀H₂₂N₈O₅).



Mol	Chain	Residues	Atoms				ZeroOcc	AltConf
4	A	1	Total	C	N	O	0	0
			33	20	8	5		
4	B	1	Total	C	N	O	0	0
			33	20	8	5		

- Molecule 5 is water.

Mol	Chain	Residues	Atoms		ZeroOcc	AltConf
5	A	33	Total	O	0	0
			33	33		
5	B	15	Total	O	0	0
			15	15		

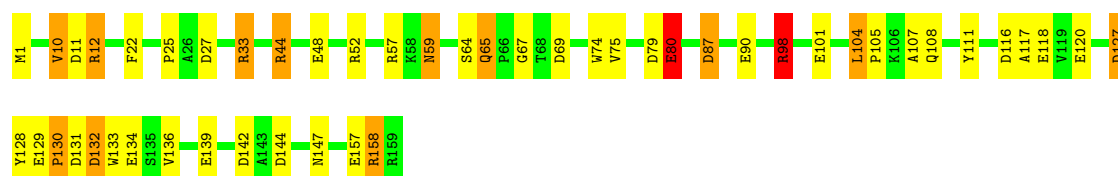
3 Residue-property plots

These plots are drawn for all protein, RNA and DNA chains in the entry. The first graphic for a chain summarises the proportions of errors displayed in the second graphic. The second graphic shows the sequence view annotated by issues in geometry and electron density. Residues are color-coded according to the number of geometric quality criteria for which they contain at least one outlier: green = 0, yellow = 1, orange = 2 and red = 3 or more. A red dot above a residue indicates a poor fit to the electron density ($RSRZ > 2$). Stretches of 2 or more consecutive residues without any outlier are shown as a green connector. Residues present in the sample, but not in the model, are shown in grey.

Note EDS was not executed.

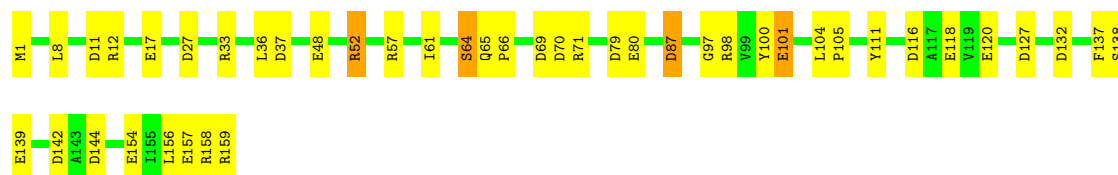
• Molecule 1: DIHYDROFOLATE REDUCTASE

Chain A: 



• Molecule 1: DIHYDROFOLATE REDUCTASE

Chain B: 



4 Data and refinement statistics

Xtriage (Phenix) and EDS were not executed - this section will therefore be incomplete.

Property	Value	Source
Space group	P 61	Depositor
Cell constants a, b, c, α , β , γ	92.99Å 92.99Å 73.40Å 90.00° 90.00° 120.00°	Depositor
Resolution (Å)	(Not available) – 1.90	Depositor
% Data completeness (in resolution range)	(Not available) ((Not available)-1.90)	Depositor
R_{merge}	(Not available)	Depositor
R_{sym}	(Not available)	Depositor
Refinement program	TNT	Depositor
R, R_{free}	0.161 , (Not available)	Depositor
Estimated twinning fraction	No twinning to report.	Xtriage
Total number of atoms	2619	wwPDB-VP
Average B, all atoms (Å ²)	25.0	wwPDB-VP

5 Model quality i

5.1 Standard geometry i

Bond lengths and bond angles in the following residue types are not validated in this section: MTX, CA, CL

The Z score for a bond length (or angle) is the number of standard deviations the observed value is removed from the expected value. A bond length (or angle) with $|Z| > 5$ is considered an outlier worth inspection. RMSZ is the root-mean-square of all Z scores of the bond lengths (or angles).

Mol	Chain	Bond lengths		Bond angles	
		RMSZ	# Z >5	RMSZ	# Z >5
1	A	1.18	8/1275 (0.6%)	1.78	35/1733 (2.0%)
1	B	1.18	8/1292 (0.6%)	1.96	39/1755 (2.2%)
All	All	1.18	16/2567 (0.6%)	1.88	74/3488 (2.1%)

All (16) bond length outliers are listed below:

Mol	Chain	Res	Type	Atoms	Z	Observed(Å)	Ideal(Å)
1	A	118	GLU	CD-OE2	8.31	1.34	1.25
1	B	80	GLU	CD-OE2	8.29	1.34	1.25
1	B	120	GLU	CD-OE2	7.77	1.34	1.25
1	A	120	GLU	CD-OE2	7.69	1.34	1.25
1	B	101	GLU	CD-OE2	7.58	1.33	1.25
1	A	90	GLU	CD-OE2	7.47	1.33	1.25
1	B	17	GLU	CD-OE2	7.11	1.33	1.25
1	B	118	GLU	CD-OE2	7.08	1.33	1.25
1	B	48	GLU	CD-OE2	7.05	1.33	1.25
1	A	134	GLU	CD-OE2	6.90	1.33	1.25
1	A	48	GLU	CD-OE2	6.55	1.32	1.25
1	A	101	GLU	CD-OE2	6.53	1.32	1.25
1	A	157	GLU	CD-OE2	6.38	1.32	1.25
1	B	157	GLU	CD-OE2	6.16	1.32	1.25
1	B	139	GLU	CD-OE1	5.86	1.32	1.25
1	A	80	GLU	CD-OE2	5.52	1.31	1.25

All (74) bond angle outliers are listed below:

Mol	Chain	Res	Type	Atoms	Z	Observed(°)	Ideal(°)
1	B	12	ARG	NE-CZ-NH1	15.03	127.81	120.30
1	B	27	ASP	CB-CG-OD1	14.97	131.77	118.30
1	B	37	ASP	CB-CG-OD2	-11.95	107.54	118.30

Continued on next page...

Continued from previous page...

Mol	Chain	Res	Type	Atoms	Z	Observed(°)	Ideal(°)
1	B	12	ARG	NE-CZ-NH2	-11.47	114.56	120.30
1	B	37	ASP	CB-CG-OD1	11.03	128.22	118.30
1	B	87	ASP	CB-CG-OD2	-10.80	108.58	118.30
1	B	57	ARG	NE-CZ-NH2	-10.72	114.94	120.30
1	B	33	ARG	NE-CZ-NH1	10.66	125.63	120.30
1	A	52	ARG	NE-CZ-NH1	9.90	125.25	120.30
1	B	158	ARG	NE-CZ-NH1	9.74	125.17	120.30
1	B	27	ASP	CB-CG-OD2	-9.72	109.55	118.30
1	B	79	ASP	CB-CG-OD1	9.61	126.95	118.30
1	B	52	ARG	NE-CZ-NH1	9.43	125.01	120.30
1	B	69	ASP	CB-CG-OD2	-9.22	110.00	118.30
1	B	69	ASP	CB-CG-OD1	9.16	126.54	118.30
1	A	158	ARG	NE-CZ-NH1	9.05	124.82	120.30
1	A	57	ARG	NE-CZ-NH1	8.89	124.75	120.30
1	A	69	ASP	CB-CG-OD2	-8.36	110.77	118.30
1	B	71	ARG	NE-CZ-NH2	-8.07	116.27	120.30
1	A	127	ASP	CB-CG-OD2	-8.01	111.09	118.30
1	A	12	ARG	NE-CZ-NH1	7.70	124.15	120.30
1	B	144	ASP	CB-CG-OD1	7.67	125.21	118.30
1	A	11	ASP	CB-CG-OD1	7.54	125.09	118.30
1	B	70	ASP	CB-CG-OD1	7.37	124.93	118.30
1	A	144	ASP	CB-CG-OD2	-7.30	111.73	118.30
1	A	98	ARG	NE-CZ-NH2	-7.23	116.69	120.30
1	A	27	ASP	CB-CG-OD2	-7.19	111.83	118.30
1	B	159	ARG	NE-CZ-NH1	-7.16	116.72	120.30
1	A	27	ASP	CB-CG-OD1	7.13	124.71	118.30
1	A	11	ASP	CB-CG-OD2	-7.09	111.92	118.30
1	A	132	ASP	CB-CG-OD2	-7.06	111.95	118.30
1	B	142	ASP	CB-CG-OD1	6.97	124.58	118.30
1	B	116	ASP	CB-CG-OD2	-6.93	112.06	118.30
1	A	111	TYR	CB-CG-CD2	-6.87	116.88	121.00
1	B	132	ASP	CB-CG-OD2	-6.85	112.14	118.30
1	B	116	ASP	CB-CG-OD1	6.84	124.46	118.30
1	A	142	ASP	CB-CG-OD2	-6.69	112.28	118.30
1	B	70	ASP	CB-CG-OD2	-6.62	112.35	118.30
1	A	158	ARG	O-C-N	6.58	133.22	122.70
1	A	158	ARG	NE-CZ-NH2	-6.44	117.08	120.30
1	A	57	ARG	NE-CZ-NH2	-6.40	117.10	120.30
1	A	98	ARG	NE-CZ-NH1	6.39	123.50	120.30
1	B	87	ASP	CB-CG-OD1	6.37	124.04	118.30
1	B	111	TYR	CB-CG-CD1	6.35	124.81	121.00
1	A	12	ARG	CG-CD-NE	6.29	125.00	111.80

Continued on next page...

Continued from previous page...

Mol	Chain	Res	Type	Atoms	Z	Observed(°)	Ideal(°)
1	A	79	ASP	CB-CG-OD1	6.26	123.94	118.30
1	A	52	ARG	NE-CZ-NH2	-6.16	117.22	120.30
1	B	79	ASP	CB-CG-OD2	-6.13	112.78	118.30
1	B	12	ARG	CD-NE-CZ	6.07	132.10	123.60
1	A	127	ASP	CB-CG-OD1	6.07	123.76	118.30
1	B	138	SER	N-CA-CB	6.01	119.52	110.50
1	B	127	ASP	CB-CG-OD2	-5.99	112.91	118.30
1	B	11	ASP	CB-CG-OD1	5.82	123.54	118.30
1	A	22	PHE	CG-CD1-CE1	-5.79	114.43	120.80
1	A	144	ASP	CB-CG-OD1	5.75	123.48	118.30
1	A	87	ASP	CB-CG-OD2	-5.75	113.13	118.30
1	B	98	ARG	NE-CZ-NH2	-5.68	117.46	120.30
1	A	12	ARG	CD-NE-CZ	5.58	131.41	123.60
1	A	116	ASP	CB-CG-OD1	5.48	123.23	118.30
1	A	22	PHE	CB-CA-C	5.46	121.33	110.40
1	B	127	ASP	CB-CG-OD1	5.45	123.20	118.30
1	B	8	LEU	CB-CA-C	-5.42	99.90	110.20
1	B	100	TYR	CB-CG-CD1	-5.39	117.76	121.00
1	B	158	ARG	NE-CZ-NH2	-5.35	117.62	120.30
1	B	101	GLU	CB-CA-C	-5.34	99.71	110.40
1	A	65	GLN	CB-CA-C	5.33	121.07	110.40
1	A	120	GLU	C-N-CA	-5.32	111.13	122.30
1	B	12	ARG	CG-CD-NE	-5.27	100.73	111.80
1	B	120	GLU	CG-CD-OE2	-5.23	107.84	118.30
1	B	142	ASP	CB-CG-OD2	-5.14	113.67	118.30
1	A	48	GLU	CG-CD-OE2	-5.14	108.03	118.30
1	A	101	GLU	CG-CD-OE2	-5.08	108.14	118.30
1	A	69	ASP	N-CA-CB	-5.05	101.51	110.60
1	A	139	GLU	CG-CD-OE1	5.03	128.37	118.30

There are no chirality outliers.

There are no planarity outliers.

5.2 Close contacts ⓘ

In the following table, the Non-H and H(model) columns list the number of non-hydrogen atoms and hydrogen atoms in the chain respectively. The H(added) column lists the number of hydrogens added by MolProbity. The Clashes column lists the number of clashes within the asymmetric unit, and the number in parentheses is this value normalized per 1000 atoms of the molecule in the chain. The Symm-Clashes column gives symmetry related clashes, in the same way as for the Clashes column.

Mol	Chain	Non-H	H(model)	H(added)	Clashes	Symm-Clashes
1	A	1243	0	1177	20	0
1	B	1259	0	1216	8	0
2	A	1	0	0	0	0
2	B	1	0	0	0	0
3	B	1	0	0	0	0
4	A	33	0	20	1	0
4	B	33	0	21	1	0
5	A	33	0	0	2	0
5	B	15	0	0	0	0
All	All	2619	0	2434	30	0

Clashscore is defined as the number of clashes calculated for the entry per 1000 atoms (including hydrogens) of the entry. The overall clashscore for this entry is 6.

All (30) close contacts within the same asymmetric unit are listed below.

Atom-1	Atom-2	Distance(Å)	Clash(Å)
1:A:128:TYR:O	1:A:130:PRO:HD3	1.87	0.75
1:A:67:GLY:HA2	1:A:74:TRP:CE2	2.28	0.68
1:A:10:VAL:HG13	1:A:117:ALA:O	1.95	0.66
1:A:67:GLY:HA2	1:A:74:TRP:CD2	2.32	0.65
1:B:104:LEU:HB3	1:B:105:PRO:HD3	1.84	0.58
1:A:33:ARG:HG3	5:A:418:HOH:O	2.09	0.53
1:B:64:SER:CB	1:B:65:GLN:NE2	2.75	0.50
1:A:104:LEU:N	1:A:105:PRO:CD	2.76	0.49
1:A:107:ALA:O	1:A:158:ARG:HD2	2.12	0.49
1:A:130:PRO:O	1:A:133:TRP:O	2.31	0.48
1:A:98:ARG:HB3	1:A:98:ARG:CZ	2.43	0.48
1:A:107:ALA:O	1:A:158:ARG:NH1	2.44	0.48
1:B:65:GLN:HB3	1:B:66:PRO:HD2	1.96	0.47
1:B:97:GLY:O	1:B:101:GLU:HG3	2.15	0.47
1:A:12:ARG:HH21	1:A:127:ASP:N	2.13	0.47
1:A:104:LEU:N	1:A:105:PRO:HD2	2.30	0.46
1:B:137:PHE:O	1:B:154:GLU:HA	2.15	0.46
1:A:25:PRO:HD2	1:A:147:ASN:OD1	2.16	0.45
1:B:36:LEU:HA	1:B:36:LEU:HD12	1.84	0.43
4:B:161:MTX:H13	4:B:161:MTX:HM1	1.75	0.43
1:A:129:GLU:O	1:A:131:ASP:N	2.52	0.43
1:A:75:VAL:HB	1:A:80:GLU:HB3	1.99	0.43
4:A:161:MTX:H13	4:A:161:MTX:HM1	1.69	0.42
1:A:12:ARG:HH21	1:A:127:ASP:CA	2.33	0.41
1:A:33:ARG:HD3	5:A:418:HOH:O	2.20	0.41
1:A:44:ARG:NH2	1:A:65:GLN:HB2	2.36	0.41
1:A:59:ASN:HD22	1:A:59:ASN:N	2.19	0.41

Continued on next page...

Continued from previous page...

Atom-1	Atom-2	Distance(Å)	Clash(Å)
1:B:65:GLN:HB3	1:B:66:PRO:CD	2.51	0.41
1:A:108:GLN:HE21	1:A:108:GLN:HB2	1.72	0.40
1:B:64:SER:HB3	1:B:65:GLN:NE2	2.36	0.40

There are no symmetry-related clashes.

5.3 Torsion angles

5.3.1 Protein backbone ⓘ

In the following table, the Percentiles column shows the percent Ramachandran outliers of the chain as a percentile score with respect to all X-ray entries followed by that with respect to entries of similar resolution. The Analysed column shows the number of residues for which the backbone conformation was analysed, and the total number of residues.

Mol	Chain	Analysed	Favoured	Allowed	Outliers	Percentiles	
1	A	157/159 (99%)	150 (96%)	6 (4%)	1 (1%)	33	19
1	B	157/159 (99%)	153 (98%)	4 (2%)	0	100	100
All	All	314/318 (99%)	303 (96%)	10 (3%)	1 (0%)	50	37

All (1) Ramachandran outliers are listed below:

Mol	Chain	Res	Type
1	A	130	PRO

5.3.2 Protein sidechains ⓘ

In the following table, the Percentiles column shows the percent sidechain outliers of the chain as a percentile score with respect to all X-ray entries followed by that with respect to entries of similar resolution. The Analysed column shows the number of residues for which the sidechain conformation was analysed, and the total number of residues.

Mol	Chain	Analysed	Rotameric	Outliers	Percentiles	
1	A	129/136 (95%)	117 (91%)	12 (9%)	13	5
1	B	134/136 (98%)	128 (96%)	6 (4%)	38	24
All	All	263/272 (97%)	245 (93%)	18 (7%)	22	10

All (18) residues with a non-rotameric sidechain are listed below:

Mol	Chain	Res	Type
1	A	1	MET
1	A	10	VAL
1	A	33	ARG
1	A	44	ARG
1	A	59	ASN
1	A	64	SER
1	A	80	GLU
1	A	87	ASP
1	A	98	ARG
1	A	104	LEU
1	A	132	ASP
1	A	136	VAL
1	B	1	MET
1	B	52	ARG
1	B	61	ILE
1	B	64	SER
1	B	87	ASP
1	B	156	LEU

Some sidechains can be flipped to improve hydrogen bonding and reduce clashes. All (4) such sidechains are listed below:

Mol	Chain	Res	Type
1	A	18	ASN
1	A	108	GLN
1	B	65	GLN
1	B	124	HIS

5.3.3 RNA ⓘ

There are no RNA chains in this entry.

5.4 Non-standard residues in protein, DNA, RNA chains ⓘ

There are no non-standard protein/DNA/RNA residues in this entry.

5.5 Carbohydrates ⓘ

There are no carbohydrates in this entry.

5.6 Ligand geometry

Of 5 ligands modelled in this entry, 3 are monoatomic - leaving 2 for Mogul analysis.

In the following table, the Counts columns list the number of bonds (or angles) for which Mogul statistics could be retrieved, the number of bonds (or angles) that are observed in the model and the number of bonds (or angles) that are defined in the chemical component dictionary. The Link column lists molecule types, if any, to which the group is linked. The Z score for a bond length (or angle) is the number of standard deviations the observed value is removed from the expected value. A bond length (or angle) with $|Z| > 2$ is considered an outlier worth inspection. RMSZ is the root-mean-square of all Z scores of the bond lengths (or angles).

Mol	Type	Chain	Res	Link	Bond lengths			Bond angles		
					Counts	RMSZ	# Z > 2	Counts	RMSZ	# Z > 2
4	MTX	A	161	-	35,35,35	3.87	22 (62%)	49,49,49	2.52	21 (42%)
4	MTX	B	161	-	35,35,35	4.19	20 (57%)	49,49,49	3.00	20 (40%)

In the following table, the Chirals column lists the number of chiral outliers, the number of chiral centers analysed, the number of these observed in the model and the number defined in the chemical component dictionary. Similar counts are reported in the Torsion and Rings columns. '-' means no outliers of that kind were identified.

Mol	Type	Chain	Res	Link	Chirals	Torsions	Rings
4	MTX	A	161	-	-	0/25/25/25	0/1/3/3
4	MTX	B	161	-	-	0/25/25/25	0/1/3/3

All (42) bond length outliers are listed below:

Mol	Chain	Res	Type	Atoms	Z	Observed(Å)	Ideal(Å)
4	B	161	MTX	C13-C12	-10.87	1.17	1.38
4	B	161	MTX	C4A-C8A	-9.86	1.19	1.40
4	A	161	MTX	OE1-CD	8.80	1.53	1.22
4	A	161	MTX	CG-CD	8.43	1.72	1.50
4	B	161	MTX	C9-C6	7.45	1.63	1.51
4	B	161	MTX	C7-C6	-6.86	1.28	1.39
4	A	161	MTX	CM-N10	6.86	1.56	1.46
4	B	161	MTX	O-C	6.70	1.36	1.23
4	B	161	MTX	C7-N8	-6.46	1.19	1.31
4	A	161	MTX	C16-C11	6.00	1.49	1.39
4	B	161	MTX	C8A-N1	5.93	1.47	1.36
4	A	161	MTX	C16-C15	-5.85	1.27	1.38
4	A	161	MTX	C9-N10	5.51	1.56	1.46
4	B	161	MTX	C16-C15	-5.38	1.28	1.38
4	A	161	MTX	C15-C14	5.35	1.50	1.39
4	B	161	MTX	OE1-CD	5.00	1.40	1.22

Continued on next page...

Continued from previous page...

Mol	Chain	Res	Type	Atoms	Z	Observed(Å)	Ideal(Å)
4	A	161	MTX	C7-C6	4.95	1.47	1.39
4	B	161	MTX	C8A-N8	4.85	1.45	1.37
4	A	161	MTX	C13-C12	4.70	1.47	1.38
4	A	161	MTX	C7-N8	4.53	1.39	1.31
4	A	161	MTX	C4A-N5	-4.47	1.27	1.37
4	B	161	MTX	C2-N3	4.03	1.43	1.35
4	A	161	MTX	C4A-C8A	-3.74	1.32	1.40
4	A	161	MTX	O1-CT	3.71	1.34	1.22
4	A	161	MTX	C14-N10	3.57	1.46	1.38
4	A	161	MTX	OE2-CD	-3.43	1.18	1.30
4	B	161	MTX	C9-N10	3.29	1.52	1.46
4	B	161	MTX	C2-NA2	-3.11	1.27	1.34
4	A	161	MTX	C2-NA2	-2.99	1.27	1.34
4	B	161	MTX	C11-C	-2.94	1.44	1.50
4	B	161	MTX	OE2-CD	2.87	1.41	1.30
4	A	161	MTX	CA-N	2.78	1.52	1.45
4	B	161	MTX	C4-NA4	2.75	1.43	1.35
4	A	161	MTX	C12-C11	-2.65	1.34	1.39
4	A	161	MTX	O-C	2.53	1.28	1.23
4	B	161	MTX	C12-C11	-2.39	1.35	1.39
4	A	161	MTX	C4-N3	2.30	1.39	1.33
4	A	161	MTX	C13-C14	-2.29	1.34	1.39
4	B	161	MTX	CA-N	-2.28	1.40	1.45
4	B	161	MTX	O1-CT	2.19	1.29	1.22
4	A	161	MTX	C11-C	2.17	1.54	1.50
4	B	161	MTX	CB-CG	-2.01	1.46	1.52

All (41) bond angle outliers are listed below:

Mol	Chain	Res	Type	Atoms	Z	Observed(°)	Ideal(°)
4	B	161	MTX	N1-C2-N3	-9.48	112.56	127.54
4	B	161	MTX	C13-C14-N10	-7.02	111.93	121.61
4	B	161	MTX	C4-C4A-C8A	6.60	122.39	116.87
4	B	161	MTX	CB-CA-CT	-6.32	97.11	110.71
4	B	161	MTX	C16-C15-C14	-5.44	113.13	120.44
4	A	161	MTX	CT-CA-N	-5.38	96.68	110.53
4	A	161	MTX	C4-C4A-N5	-5.37	114.78	120.31
4	A	161	MTX	N1-C2-N3	-5.20	119.33	127.54
4	A	161	MTX	N8-C8A-N1	-5.02	109.42	116.19
4	A	161	MTX	C4-C4A-C8A	4.98	121.03	116.87
4	B	161	MTX	CM-N10-C14	4.89	128.65	119.58
4	A	161	MTX	C6-C7-N8	-4.82	118.09	123.16

Continued on next page...

Continued from previous page...

Mol	Chain	Res	Type	Atoms	Z	Observed(°)	Ideal(°)
4	B	161	MTX	NA2-C2-N3	4.70	125.31	117.19
4	A	161	MTX	CM-N10-C9	4.27	125.49	114.12
4	A	161	MTX	C13-C14-N10	-4.13	115.91	121.61
4	B	161	MTX	C4-C4A-N5	-4.10	116.08	120.31
4	A	161	MTX	C2-N3-C4	3.92	130.42	116.50
4	B	161	MTX	C2-N1-C8A	3.53	119.98	115.30
4	B	161	MTX	OE1-CD-CG	-3.49	111.03	123.03
4	B	161	MTX	C11-C-N	3.34	122.46	116.89
4	B	161	MTX	C9-C6-N5	-3.27	111.47	116.97
4	A	161	MTX	C4A-C4-N3	-3.24	108.40	119.27
4	B	161	MTX	C2-N3-C4	2.96	127.00	116.50
4	B	161	MTX	C7-C6-N5	2.77	122.68	120.75
4	B	161	MTX	O-C-N	-2.64	117.67	122.44
4	A	161	MTX	C12-C13-C14	-2.58	116.98	120.44
4	A	161	MTX	OE2-CD-CG	2.54	123.21	114.22
4	A	161	MTX	NA4-C4-N3	2.54	125.14	116.23
4	A	161	MTX	C4A-C4-NA4	2.53	126.45	120.72
4	A	161	MTX	NA2-C2-N3	2.51	121.52	117.19
4	A	161	MTX	C9-N10-C14	-2.47	114.21	119.36
4	B	161	MTX	C9-C6-C7	2.42	125.81	121.49
4	A	161	MTX	CG-CB-CA	2.40	117.69	112.99
4	B	161	MTX	OE2-CD-CG	2.29	122.31	114.22
4	A	161	MTX	OE1-CD-CG	-2.29	115.16	123.03
4	B	161	MTX	C15-C14-C13	2.23	123.70	119.09
4	A	161	MTX	CB-CG-CD	-2.19	107.57	112.88
4	A	161	MTX	C4A-C8A-N1	2.13	125.56	122.26
4	B	161	MTX	NA4-C4-N3	2.10	123.59	116.23
4	A	161	MTX	C7-N8-C8A	-2.03	114.57	116.85
4	B	161	MTX	NA2-C2-N1	2.03	122.13	117.96

There are no chirality outliers.

There are no torsion outliers.

There are no ring outliers.

5.7 Other polymers ⓘ

There are no such residues in this entry.

5.8 Polymer linkage issues

There are no chain breaks in this entry.

6 Fit of model and data ⓘ

6.1 Protein, DNA and RNA chains ⓘ

EDS was not executed - this section will therefore be empty.

6.2 Non-standard residues in protein, DNA, RNA chains ⓘ

EDS was not executed - this section will therefore be empty.

6.3 Carbohydrates ⓘ

EDS was not executed - this section will therefore be empty.

6.4 Ligands ⓘ

EDS was not executed - this section will therefore be empty.

6.5 Other polymers ⓘ

EDS was not executed - this section will therefore be empty.