



# Full wwPDB X-ray Structure Validation Report

Feb 27, 2014 – 02:11 PM GMT

PDB ID : 4DTB  
Title : Crystal Structure of F95Y Aminoglycoside-2''-PhosphotransferaseType IVa  
in Complex with Guanosine  
Authors : Shi, K.; Berghuis, A.M.  
Deposited on : 2012-02-20  
Resolution : 2.10 Å(reported)

This is a full wwPDB validation report for a publicly released PDB entry.  
We welcome your comments at [validation@mail.wwpdb.org](mailto:validation@mail.wwpdb.org)  
A user guide is available at <http://wwpdb.org/ValidationPDFNotes.html>

---

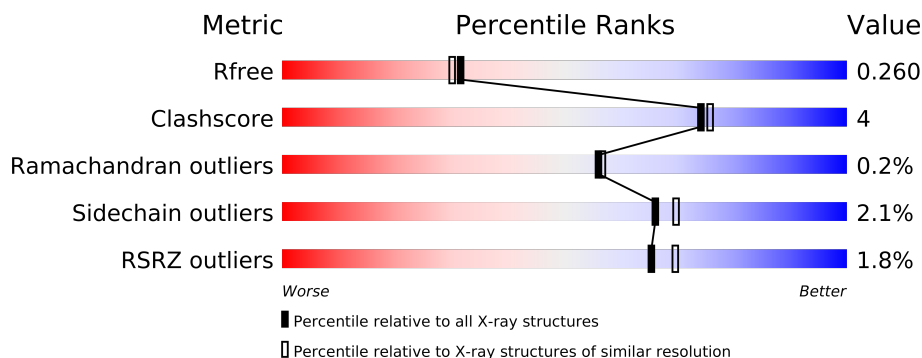
The following versions of software and data (see [references](#)) were used in the production of this report:

MolProbity : 4.02b-467  
Mogul : 1.15 2013  
Xtriage (Phenix) : dev-1323  
EDS : stable22639  
Percentile statistics : 21963  
Refmac : 5.8.0049  
CCP4 : 6.3.0 (Settle)  
Ideal geometry (proteins) : Engh & Huber (2001)  
Ideal geometry (DNA, RNA) : Parkinson et. al. (1996)  
Validation Pipeline (wwPDB-VP) : stable22683

# 1 Overall quality at a glance



The reported resolution of this entry is 2.10 Å.

Percentile scores (ranging between 0-100) for global validation metrics of the entry are shown in the following graphic. The table shows the number of entries on which the scores are based.



Metric	Whole archive (#Entries)	Similar resolution (#Entries, resolution range(Å))
$R_{free}$	66092	3012 (2.10-2.10)
Clashscore	79885	3649 (2.10-2.10)
Ramachandran outliers	78287	3610 (2.10-2.10)
Sidechain outliers	78261	3611 (2.10-2.10)
RSRZ outliers	66119	3013 (2.10-2.10)

The table below summarises the geometric issues observed across the polymeric chains and their fit to the electron density. The red, orange, yellow and green segments on the lower bar indicate the fraction of residues that contain outliers for  $\geq 3$ , 2, 1 and 0 types of geometric quality criteria. The upper red bar (where present) indicates the fraction of residues that have poor fit to the electron density.

Mol	Chain	Length	Quality of chain
1	A	309	
1	B	309	

The following table lists non-polymeric compounds that are outliers for geometric or electron-density-fit criteria:

Mol	Type	Chain	Res	Geometry	Electron density
3	CL	A	402	-	X

## 2 Entry composition

There are 4 unique types of molecules in this entry. The entry contains 5079 atoms, of which 0 are hydrogen and 0 are deuterium.

In the tables below, the ZeroOcc column contains the number of atoms modelled with zero occupancy, the AltConf column contains the number of residues with at least one atom in alternate conformation and the Trace column contains the number of residues modelled with at most 2 atoms.

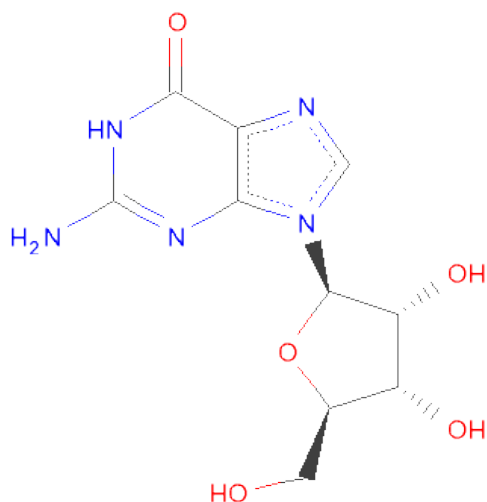
- Molecule 1 is a protein called APH(2'')-Id.

Mol	Chain	Residues	Atoms					ZeroOcc	AltConf	Trace
1	A	296	Total	C	N	O	S	0	5	0
			2419	1568	386	453	12			
1	B	297	Total	C	N	O	S	0	3	0
			2422	1562	386	461	13			

There are 18 discrepancies between the modelled and reference sequences:

Chain	Residue	Modelled	Actual	Comment	Reference
A	95	TYR	PHE	ENGINEERED MUTATION	UNP O68183
A	302	LEU	-	EXPRESSION TAG	UNP O68183
A	303	GLU	-	EXPRESSION TAG	UNP O68183
A	304	HIS	-	EXPRESSION TAG	UNP O68183
A	305	HIS	-	EXPRESSION TAG	UNP O68183
A	306	HIS	-	EXPRESSION TAG	UNP O68183
A	307	HIS	-	EXPRESSION TAG	UNP O68183
A	308	HIS	-	EXPRESSION TAG	UNP O68183
A	309	HIS	-	EXPRESSION TAG	UNP O68183
B	95	TYR	PHE	ENGINEERED MUTATION	UNP O68183
B	302	LEU	-	EXPRESSION TAG	UNP O68183
B	303	GLU	-	EXPRESSION TAG	UNP O68183
B	304	HIS	-	EXPRESSION TAG	UNP O68183
B	305	HIS	-	EXPRESSION TAG	UNP O68183
B	306	HIS	-	EXPRESSION TAG	UNP O68183
B	307	HIS	-	EXPRESSION TAG	UNP O68183
B	308	HIS	-	EXPRESSION TAG	UNP O68183
B	309	HIS	-	EXPRESSION TAG	UNP O68183

- Molecule 2 is GUANOSINE (three-letter code: GMP) (formula: C<sub>10</sub>H<sub>13</sub>N<sub>5</sub>O<sub>5</sub>).



Mol	Chain	Residues	Atoms				ZeroOcc	AltConf
2	A	1	Total	C	N	O	0	0
			20	10	5	5		
2	B	1	Total	C	N	O	0	0
			20	10	5	5		

- Molecule 3 is CHLORIDE ION (three-letter code: CL) (formula: Cl).

Mol	Chain	Residues	Atoms		ZeroOcc	AltConf
3	A	1	Total	Cl	0	0
			1	1		

- Molecule 4 is water.

Mol	Chain	Residues	Atoms		ZeroOcc	AltConf
4	A	93	Total	O	0	0
			93	93		
4	B	104	Total	O	0	0
			104	104		



## 4 Data and refinement statistics

Property	Value	Source
Space group	P 1 21 1	Depositor
Cell constants a, b, c, $\alpha$ , $\beta$ , $\gamma$	42.27Å 101.34Å 73.60Å 90.00° 100.60° 90.00°	Depositor
Resolution (Å)	30.00 – 2.10 29.44 – 2.10	Depositor EDS
% Data completeness (in resolution range)	99.3 (30.00-2.10) 99.3 (29.44-2.10)	Depositor EDS
$R_{merge}$	(Not available)	Depositor
$R_{sym}$	0.09	Depositor
$\langle I/\sigma(I) \rangle$ <sup>1</sup>	4.32 (at 2.10Å)	Xtriage
Refinement program	REFMAC 5.5.0109	Depositor
R, $R_{free}$	0.197 , 0.250 0.215 , 0.260	Depositor DCC
$R_{free}$ test set	1783 reflections (5.28%)	DCC
Wilson B-factor (Å <sup>2</sup> )	27.2	Xtriage
Anisotropy	0.063	Xtriage
Bulk solvent $k_{sol}$ (e/Å <sup>3</sup> ), $B_{sol}$ (Å <sup>2</sup> )	0.36 , 18.2	EDS
Estimated twinning fraction	No twinning to report.	Xtriage
L-test for twinning	$\langle  L  \rangle = 0.51$ , $\langle L^2 \rangle = 0.34$	Xtriage
Outliers	1 of 35566 reflections (0.003%)	Xtriage
$F_o, F_c$ correlation	0.94	EDS
Total number of atoms	5079	wwPDB-VP
Average B, all atoms (Å <sup>2</sup> )	28.0	wwPDB-VP

Xtriage's analysis on translational NCS is as follows: *The largest off-origin peak in the Patterson function is 5.00% of the height of the origin peak. No significant pseudotranslation is detected.*

<sup>1</sup>Intensities estimated from amplitudes.

## 5 Model quality

### 5.1 Standard geometry

Bond lengths and bond angles in the following residue types are not validated in this section: GMP, CL

The Z score for a bond length (or angle) is the number of standard deviations the observed value is removed from the expected value. A bond length (or angle) with  $|Z| > 5$  is considered an outlier worth inspection. RMSZ is the root-mean-square of all Z scores of the bond lengths (or angles).

Mol	Chain	Bond lengths		Bond angles	
		RMSZ	$\# Z  > 5$	RMSZ	$\# Z  > 5$
1	A	0.99	1/2491 (0.0%)	0.94	3/3371 (0.1%)
1	B	1.06	2/2490 (0.1%)	0.94	5/3368 (0.1%)
All	All	1.03	3/4981 (0.1%)	0.94	8/6739 (0.1%)

All (3) bond length outliers are listed below:

Mol	Chain	Res	Type	Atoms	Z	Observed(Å)	Ideal(Å)
1	A	86	GLU	CB-CG	5.60	1.62	1.52
1	B	4	TYR	CD2-CE2	5.56	1.47	1.39
1	B	221	ALA	CA-CB	-5.07	1.41	1.52

All (8) bond angle outliers are listed below:

Mol	Chain	Res	Type	Atoms	Z	Observed(°)	Ideal(°)
1	A	178	ARG	NE-CZ-NH2	-17.03	111.78	120.30
1	A	178	ARG	NE-CZ-NH1	13.39	127.00	120.30
1	B	155	LYS	CD-CE-NZ	-6.92	95.78	111.70
1	A	178	ARG	CD-NE-CZ	6.38	132.53	123.60
1	B	178	ARG	NE-CZ-NH2	-5.68	117.46	120.30
1	B	206	ASP	CB-CG-OD1	5.47	123.22	118.30
1	B	147	ARG	NE-CZ-NH2	5.10	122.85	120.30
1	B	179	ASP	CB-CG-OD2	5.05	122.84	118.30

There are no chirality outliers.

There are no planarity outliers.

## 5.2 Close contacts ⓘ

In the following table, the Non-H and H(model) columns list the number of non-hydrogen atoms and hydrogen atoms in the chain respectively. The H(added) column lists the number of hydrogens added by MolProbity. The Clashes column lists the number of clashes within the asymmetric unit, and the number in parentheses is this value normalized per 1000 atoms of the molecule in the chain. The Symm-Clashes column gives symmetry related clashes, in the same way as for the Clashes column.

Mol	Chain	Non-H	H(model)	H(added)	Clashes	Symm-Clashes
1	A	2419	0	0	10	0
1	B	2422	0	0	12	0
2	A	20	0	13	1	0
2	B	20	0	13	0	0
3	A	1	0	0	0	0
4	A	93	0	0	3	1
4	B	104	0	0	2	0
All	All	5079	0	26	20	1

Clashscore is defined as the number of clashes calculated for the entry per 1000 atoms (including hydrogens) of the entry. The overall clashscore for this entry is 4.

All (20) close contacts within the same asymmetric unit are listed below.

Atom-1	Atom-2	Distance(Å)	Clash(Å)
1:A:178:ARG:CD	4:A:555:HOH:O	2.20	0.89
1:B:90[B]:MET:CE	1:B:90[B]:MET:CA	2.62	0.77
1:B:274:GLU:CG	1:B:278:TYR:CE2	2.73	0.71
1:B:175:ASP:OD2	1:B:178:ARG:NH2	2.32	0.62
1:A:51[B]:SER:OG	1:B:51[B]:SER:OG	2.19	0.60
1:A:89:GLN:NE2	4:A:504:HOH:O	2.36	0.58
1:A:234:MET:CE	1:A:242:MET:SD	2.92	0.57
1:B:202:HIS:CD2	1:B:217:ASP:OD2	2.62	0.52
1:B:274:GLU:O	1:B:278:TYR:CD2	2.63	0.52
1:A:175:ASP:OD2	1:A:178:ARG:NH2	2.43	0.51
1:A:95[A]:TYR:OH	2:A:401:GMP:N7	2.45	0.50
1:A:272:SER:OG	1:A:294:GLU:OE1	2.31	0.47
1:B:235:GLU:CB	4:B:604:HOH:O	2.62	0.47
1:A:83[A]:MET:SD	1:B:160:LEU:CD2	3.04	0.46
1:B:276:ILE:CD1	1:B:295:ILE:CD1	2.95	0.45
1:A:178:ARG:NH1	4:A:555:HOH:O	2.49	0.44
1:B:33:ASP:OD2	1:B:282:TYR:CE1	2.72	0.42
1:B:117:ASN:ND2	1:B:247:LYS:NZ	2.67	0.42
1:B:255:LYS:N	4:B:572:HOH:O	2.53	0.40
1:A:156:LYS:NZ	1:A:281:GLU:OE2	2.54	0.40



All (1) symmetry-related close contacts are listed below. The label for Atom-2 includes the symmetry operator and encoded unit-cell translations to be applied.

Atom-1	Atom-2	Distance(Å)	Clash(Å)
4:A:555:HOH:O	4:A:561:HOH:O[2_656]	1.58	0.62

## 5.3 Torsion angles

### 5.3.1 Protein backbone ⓘ

In the following table, the Percentiles column shows the percent Ramachandran outliers of the chain as a percentile score with respect to all X-ray entries followed by that with respect to entries of similar resolution. The Analysed column shows the number of residues for which the backbone conformation was analysed, and the total number of residues.

Mol	Chain	Analysed	Favoured	Allowed	Outliers	Percentiles	
1	A	299/309 (97%)	291 (97%)	7 (2%)	1 (0%)	50	49
1	B	298/309 (96%)	287 (96%)	11 (4%)	0	100	100
All	All	597/618 (97%)	578 (97%)	18 (3%)	1 (0%)	56	57

All (1) Ramachandran outliers are listed below:

Mol	Chain	Res	Type
1	A	41	ARG

### 5.3.2 Protein sidechains ⓘ

In the following table, the Percentiles column shows the percent sidechain outliers of the chain as a percentile score with respect to all X-ray entries followed by that with respect to entries of similar resolution. The Analysed column shows the number of residues for which the sidechain conformation was analysed, and the total number of residues.

Mol	Chain	Analysed	Rotameric	Outliers	Percentiles	
1	A	261/287 (91%)	256 (98%)	5 (2%)	69	73
1	B	263/287 (92%)	257 (98%)	6 (2%)	63	66
All	All	524/574 (91%)	513 (98%)	11 (2%)	66	70

All (11) residues with a non-rotameric sidechain are listed below:

Mol	Chain	Res	Type
1	A	3	THR

*Continued on next page...*

*Continued from previous page...*

Mol	Chain	Res	Type
1	A	113	LYS
1	A	158	LYS
1	A	246	SER
1	A	274	GLU
1	B	69	ASN
1	B	144	LEU
1	B	155	LYS
1	B	235	GLU
1	B	236	ASP
1	B	274	GLU

Some sidechains can be flipped to improve hydrogen bonding and reduce clashes. There are no such sidechains identified.

### 5.3.3 RNA ⓘ

There are no RNA chains in this entry.

## 5.4 Non-standard residues in protein, DNA, RNA chains ⓘ

There are no non-standard protein/DNA/RNA residues in this entry.

## 5.5 Carbohydrates ⓘ

There are no carbohydrates in this entry.

## 5.6 Ligand geometry ⓘ

Of 3 ligands modelled in this entry, 1 is monoatomic - leaving 2 for Mogul analysis.

In the following table, the Counts columns list the number of bonds (or angles) for which Mogul statistics could be retrieved, the number of bonds (or angles) that are observed in the model and the number of bonds (or angles) that are defined in the chemical component dictionary. The Link column lists molecule types, if any, to which the group is linked. The Z score for a bond length (or angle) is the number of standard deviations the observed value is removed from the expected value. A bond length (or angle) with  $|Z| > 2$  is considered an outlier worth inspection. RMSZ is the root-mean-square of all Z scores of the bond lengths (or angles).

Mol	Type	Chain	Res	Link	Bond lengths			Bond angles		
					Counts	RMSZ	$\# Z  > 2$	Counts	RMSZ	$\# Z  > 2$
2	GMP	A	401	-	22,22,22	1.75	5 (22%)	30,33,33	1.96	10 (33%)

Mol	Type	Chain	Res	Link	Bond lengths			Bond angles		
					Counts	RMSZ	# Z  > 2	Counts	RMSZ	# Z  > 2
2	GMP	B	401	-	22,22,22	1.64	5 (22%)	30,33,33	3.46	8 (26%)

In the following table, the Chirals column lists the number of chiral outliers, the number of chiral centers analysed, the number of these observed in the model and the number defined in the chemical component dictionary. Similar counts are reported in the Torsion and Rings columns. '-' means no outliers of that kind were identified.

Mol	Type	Chain	Res	Link	Chirals	Torsions	Rings
2	GMP	A	401	-	-	0/6/22/22	0/1/3/3
2	GMP	B	401	-	-	0/6/22/22	0/1/3/3

All (10) bond length outliers are listed below:

Mol	Chain	Res	Type	Atoms	Z	Observed(Å)	Ideal(Å)
2	A	401	GMP	C2-N1	3.76	1.42	1.36
2	B	401	GMP	O4'-C1'	3.61	1.46	1.41
2	A	401	GMP	O4'-C1'	3.61	1.46	1.41
2	B	401	GMP	C2-N1	3.26	1.42	1.36
2	A	401	GMP	C6-C5	-3.10	1.36	1.41
2	A	401	GMP	C4-N9	-2.88	1.33	1.37
2	B	401	GMP	C4-N9	-2.64	1.33	1.37
2	B	401	GMP	C6-C5	-2.55	1.37	1.41
2	B	401	GMP	O3'-C3'	-2.44	1.37	1.43
2	A	401	GMP	C5-C4	-2.04	1.35	1.40

All (18) bond angle outliers are listed below:

Mol	Chain	Res	Type	Atoms	Z	Observed(°)	Ideal(°)
2	B	401	GMP	C6-C5-N7	-16.89	131.87	134.14
2	A	401	GMP	C1'-N9-C4	-3.94	119.84	126.64
2	A	401	GMP	C4-C5-N7	-3.81	106.26	109.52
2	B	401	GMP	C4-C5-N7	-3.39	106.62	109.52
2	A	401	GMP	O4'-C1'-N9	-3.16	105.50	108.44
2	B	401	GMP	O4'-C4'-C5'	3.13	115.83	109.15
2	A	401	GMP	C6-C5-N7	-2.94	133.74	134.14
2	A	401	GMP	C2-N3-C4	2.94	119.22	115.09
2	A	401	GMP	C8-N9-C1'	2.86	132.01	126.38
2	A	401	GMP	N2-C2-N1	2.68	120.81	117.86
2	B	401	GMP	C2-N3-C4	2.62	118.78	115.09
2	B	401	GMP	C5-C4-N3	-2.62	122.15	125.94
2	A	401	GMP	N7-C8-N9	-2.44	107.47	114.36
2	A	401	GMP	O4'-C4'-C5'	2.29	114.04	109.15

*Continued on next page...*

*Continued from previous page...*

Mol	Chain	Res	Type	Atoms	Z	Observed(°)	Ideal(°)
2	B	401	GMP	N2-C2-N1	2.19	120.27	117.86
2	B	401	GMP	O4'-C1'-N9	2.18	110.47	108.44
2	A	401	GMP	C5-C4-N3	-2.13	122.85	125.94
2	B	401	GMP	N7-C8-N9	-2.05	108.57	114.36

There are no chirality outliers.

There are no torsion outliers.

There are no ring outliers.

## 5.7 Other polymers ⓘ

There are no such residues in this entry.

## 5.8 Polymer linkage issues

There are no chain breaks in this entry.

## 6 Fit of model and data ⓘ

### 6.1 Protein, DNA and RNA chains ⓘ

In the following table, the column labelled ‘#RSRZ> 2’ contains the number (and percentage) of RSRZ outliers, followed by percent RSRZ outliers for the chain as percentile scores relative to all X-ray entries and entries of similar resolution. The OWAB column contains the minimum, median, 95<sup>th</sup> percentile and maximum values of the occupancy-weighted average B-factor per residue. The column labelled ‘Q< 0.9’ lists the number of (and percentage) of residues with an average occupancy less than 0.9.

Mol	Chain	Analysed	<RSRZ>	#RSRZ>2	OWAB(Å <sup>2</sup> )	Q<0.9
1	A	296/309 (95%)	0.09	5 (1%) 67 71	17, 29, 58, 81	0
1	B	297/309 (96%)	-0.02	6 (2%) 62 67	15, 24, 45, 54	0
All	All	593/618 (95%)	0.04	11 (1%) 65 68	15, 26, 50, 81	0

All (11) RSRZ outliers are listed below:

Mol	Chain	Res	Type	RSRZ
1	B	278	TYR	6.2
1	B	237	ASP	3.7
1	A	284	TYR	3.4
1	A	285	MET	3.3
1	B	236	ASP	3.0
1	A	293	ASN	2.2
1	B	285	MET	2.2
1	A	95[A]	TYR	2.1
1	B	141	ASN	2.1
1	A	237	ASP	2.1
1	B	242	MET	2.1

### 6.2 Non-standard residues in protein, DNA, RNA chains ⓘ

There are no non-standard protein/DNA/RNA residues in this entry.

### 6.3 Carbohydrates ⓘ

There are no carbohydrates in this entry.

## 6.4 Ligands

In the following table, the Atoms column lists the number of modelled atoms in the group and the number defined in the chemical component dictionary. LLDF column lists the quality of electron density of the group with respect to its neighbouring residues in protein, DNA or RNA chains. The B-factors column lists the minimum, median, 95<sup>th</sup> percentile and maximum values of B factors of atoms in the group. The column labelled 'Q< 0.9' lists the number of atoms with occupancy less than 0.9.

Mol	Type	Chain	Res	Atoms	RSR	LLDF	B-factors(Å <sup>2</sup> )	Q<0.9
3	CL	A	402	1/1	0.20	3.56	43,43,43,43	0
2	GMP	A	401	20/20	0.13	-0.37	28,35,38,40	0
2	GMP	B	401	20/20	0.11	-0.39	21,27,29,29	0

## 6.5 Other polymers

There are no such residues in this entry.