



Full wwPDB X-ray Structure Validation Report

Feb 27, 2014 – 04:44 PM GMT

PDB ID : 1DV2
Title : The structure of biotin carboxylase, mutant E288K, complexed with ATP
Authors : Thoden, J.B.; Blanchard, C.Z.; Holden, H.M.; Waldrop, G.L.
Deposited on : 2000-01-19
Resolution : 2.50 Å(reported)

This is a full wwPDB validation report for a publicly released PDB entry.
We welcome your comments at validation@mail.wwpdb.org
A user guide is available at <http://wwpdb.org/ValidationPDFNotes.html>

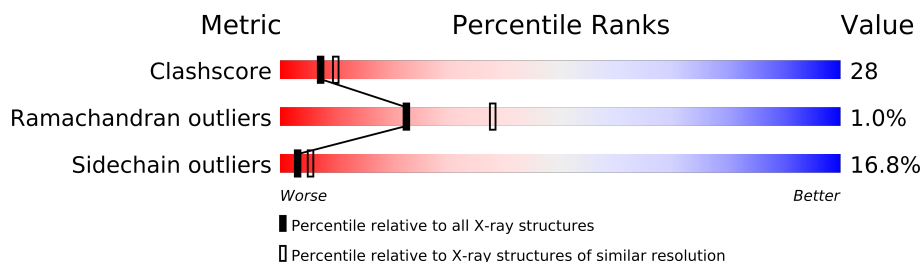
The following versions of software and data (see [references](#)) were used in the production of this report:

MolProbity : 4.02b-467
Mogul : 1.15 2013
Xtriage (Phenix) : **NOT EXECUTED**
EDS : **NOT EXECUTED**
Percentile statistics : 21963
Ideal geometry (proteins) : Engh & Huber (2001)
Ideal geometry (DNA, RNA) : Parkinson et. al. (1996)
Validation Pipeline (wwPDB-VP) : stable22683

1 Overall quality at a glance

The reported resolution of this entry is 2.50 Å.

Percentile scores (ranging between 0-100) for global validation metrics of the entry are shown in the following graphic. The table shows the number of entries on which the scores are based.



Metric	Whole archive (#Entries)	Similar resolution (#Entries, resolution range(Å))
Clashscore	79885	3562 (2.50-2.50)
Ramachandran outliers	78287	3480 (2.50-2.50)
Sidechain outliers	78261	3482 (2.50-2.50)

The table below summarises the geometric issues observed across the polymeric chains and their fit to the electron density. The red, orange, yellow and green segments on the lower bar indicate the fraction of residues that contain outliers for ≥ 3 , 2, 1 and 0 types of geometric quality criteria. The upper red bar (where present) indicates the fraction of residues that have poor fit to the electron density.

Note EDS was not executed.

Mol	Chain	Length	Quality of chain
1	A	452	
1	B	452	

2 Entry composition

There are 3 unique types of molecules in this entry. The entry contains 7113 atoms, of which 0 are hydrogen and 0 are deuterium.

In the tables below, the ZeroOcc column contains the number of atoms modelled with zero occupancy, the AltConf column contains the number of residues with at least one atom in alternate conformation and the Trace column contains the number of residues modelled with at most 2 atoms.

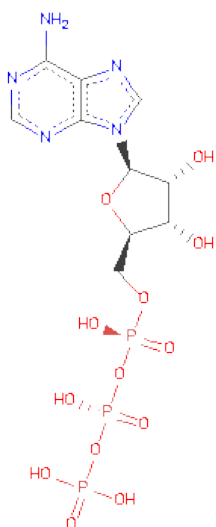
- Molecule 1 is a protein called BIOTIN CARBOXYLASE.

Mol	Chain	Residues	Atoms					ZeroOcc	AltConf	Trace
1	A	450	Total	C	N	O	S	0	1	0
			3469	2184	624	639	22			
1	B	448	Total	C	N	O	S	0	0	0
			3452	2175	619	636	22			

There are 8 discrepancies between the modelled and reference sequences:

Chain	Residue	Modelled	Actual	Comment	Reference
A	1A	HIS	-	INSERTED	UNP P24182
A	1B	SER	-	INSERTED	UNP P24182
A	1C	GLY	-	INSERTED	UNP P24182
A	288	LYS	GLU	MUTATION	UNP P24182
B	1A	HIS	-	INSERTED	UNP P24182
B	1B	SER	-	INSERTED	UNP P24182
B	1C	GLY	-	INSERTED	UNP P24182
B	288	LYS	GLU	MUTATION	UNP P24182

- Molecule 2 is ADENOSINE-5'-TRIPHOSPHATE (three-letter code: ATP) (formula: $C_{10}H_{16}N_5O_{13}P_3$).



Mol	Chain	Residues	Atoms					ZeroOcc	AltConf
2	A	1	Total	C	N	O	P	0	0
			31	10	5	13	3		
2	B	1	Total	C	N	O	P	0	0
			31	10	5	13	3		

- Molecule 3 is water.

Mol	Chain	Residues	Atoms		ZeroOcc	AltConf
3	A	82	Total	O	0	0
			82	82		
3	B	48	Total	O	0	0
			48	48		

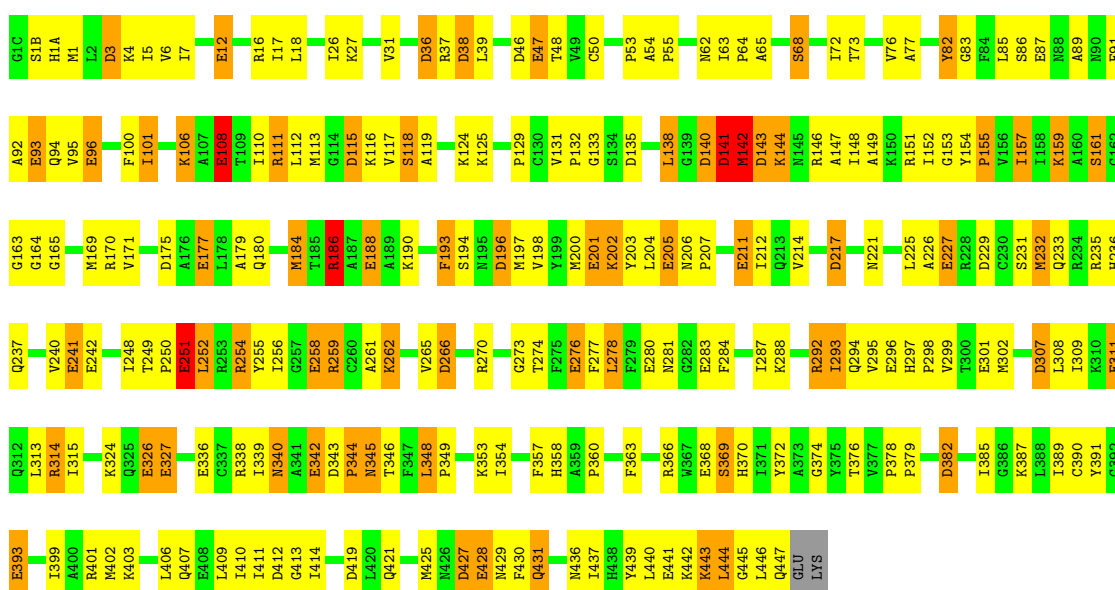
3 Residue-property plots

These plots are drawn for all protein, RNA and DNA chains in the entry. The first graphic for a chain summarises the proportions of errors displayed in the second graphic. The second graphic shows the sequence view annotated by issues in geometry and electron density. Residues are color-coded according to the number of geometric quality criteria for which they contain at least one outlier: green = 0, yellow = 1, orange = 2 and red = 3 or more. A red dot above a residue indicates a poor fit to the electron density ($RSRZ > 2$). Stretches of 2 or more consecutive residues without any outlier are shown as a green connector. Residues present in the sample, but not in the model, are shown in grey.

Note EDS was not executed.

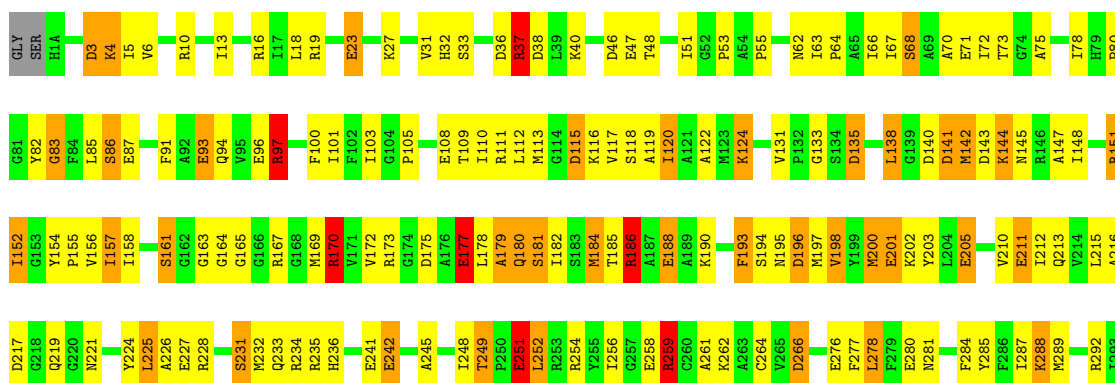
• Molecule 1: BIOTIN CARBOXYLASE

Chain A:



• Molecule 1: BIOTIN CARBOXYLASE

Chain B:



S369	Q294
H370	V295
I371	E296
	H297
	P298
P378	
P379	E301
Y380	M302
Y381	I303
M384	D307
	L308
	I309
	K310
	E311
	Q312
	L313
I399	R314
M400	I315
R401	
M402	Q319
K403	P320
	L321
	S322
L409	I323
	K324
	Q325
	E326
	E327
	V330
	H333
	A334
	V335
	E336
	C337
	R338
	I339
	N340
	A341
	E342
	D343
	P344
	R345
	T346
	F347
	L348
	P349
	S350
	K353
	H358
	G364
	V365
	R366
	W367
	E368
S369	
H370	
I371	
P378	
P379	
Y380	
Y381	
M384	
K387	
C390	
D396	
I399	
M400	
R401	
M402	
K403	
L409	
T416	
D419	
L420	
Q421	
I422	
R423	
I424	
M425	
M426	
D427	
E428	
M429	
F430	
Q431	
T435	
M436	
I437	
H438	
Y439	
L440	
E441	
K442	
K443	
L444	
G445	
L446	
Q447	
GLU	
LYS	

4 Data and refinement statistics

Xtriage (Phenix) and EDS were not executed - this section will therefore be incomplete.

Property	Value	Source
Space group	P 21 21 21	Depositor
Cell constants a, b, c, α , β , γ	81.30Å 115.50Å 122.40Å 90.00° 90.00° 90.00°	Depositor
Resolution (Å)	30.00 – 2.50	Depositor
% Data completeness (in resolution range)	92.6 (30.00-2.50)	Depositor
R_{merge}	0.07	Depositor
R_{sym}	(Not available)	Depositor
Refinement program	TNT V. 5-E	Depositor
R, R_{free}	0.171 , 0.203	Depositor
Estimated twinning fraction	No twinning to report.	Xtriage
Total number of atoms	7113	wwPDB-VP
Average B, all atoms (Å ²)	37.0	wwPDB-VP

5 Model quality ⓘ

5.1 Standard geometry ⓘ

Bond lengths and bond angles in the following residue types are not validated in this section: ATP

The Z score for a bond length (or angle) is the number of standard deviations the observed value is removed from the expected value. A bond length (or angle) with $|Z| > 5$ is considered an outlier worth inspection. RMSZ is the root-mean-square of all Z scores of the bond lengths (or angles).

Mol	Chain	Bond lengths		Bond angles	
		RMSZ	# Z >5	RMSZ	# Z >5
1	A	1.02	27/3537 (0.8%)	1.48	49/4771 (1.0%)
1	B	0.98	27/3516 (0.8%)	1.40	32/4744 (0.7%)
All	All	1.00	54/7053 (0.8%)	1.44	81/9515 (0.9%)

All (54) bond length outliers are listed below:

Mol	Chain	Res	Type	Atoms	Z	Observed(Å)	Ideal(Å)
1	A	47	GLU	CD-OE2	7.32	1.33	1.25
1	A	342	GLU	CD-OE2	7.01	1.33	1.25
1	A	211	GLU	CD-OE2	6.79	1.33	1.25
1	B	342	GLU	CD-OE2	6.69	1.33	1.25
1	B	177	GLU	CD-OE2	6.62	1.32	1.25
1	B	47	GLU	CD-OE2	6.57	1.32	1.25
1	A	326	GLU	CD-OE2	6.55	1.32	1.25
1	A	441	GLU	CD-OE2	6.49	1.32	1.25
1	A	428	GLU	CD-OE2	6.37	1.32	1.25
1	B	188	GLU	CD-OE2	6.36	1.32	1.25
1	A	188	GLU	CD-OE2	6.27	1.32	1.25
1	B	71	GLU	CD-OE2	6.26	1.32	1.25
1	A	276	GLU	CD-OE2	6.24	1.32	1.25
1	B	211	GLU	CD-OE2	6.22	1.32	1.25
1	A	201	GLU	CD-OE2	6.17	1.32	1.25
1	B	326	GLU	CD-OE2	6.16	1.32	1.25
1	B	276	GLU	CD-OE2	6.13	1.32	1.25
1	A	93	GLU	CD-OE2	6.12	1.32	1.25
1	A	205	GLU	CD-OE2	6.11	1.32	1.25
1	A	96	GLU	CD-OE2	6.08	1.32	1.25
1	B	441	GLU	CD-OE2	6.02	1.32	1.25
1	A	251	GLU	CD-OE2	6.01	1.32	1.25
1	B	251	GLU	CD-OE2	5.95	1.32	1.25
1	B	428	GLU	CD-OE2	5.92	1.32	1.25

Continued on next page...

Continued from previous page...

Mol	Chain	Res	Type	Atoms	Z	Observed(Å)	Ideal(Å)
1	A	12	GLU	CD-OE2	5.86	1.32	1.25
1	B	93	GLU	CD-OE2	5.83	1.32	1.25
1	B	23	GLU	CD-OE2	5.81	1.32	1.25
1	B	311	GLU	CD-OE2	5.81	1.32	1.25
1	B	296	GLU	CD-OE1	-5.79	1.19	1.25
1	B	201	GLU	CD-OE2	5.77	1.31	1.25
1	B	242	GLU	CD-OE2	5.72	1.31	1.25
1	B	296	GLU	CD-OE2	5.70	1.31	1.25
1	B	280	GLU	CD-OE2	5.66	1.31	1.25
1	A	368	GLU	CD-OE2	5.63	1.31	1.25
1	A	311	GLU	CD-OE2	5.61	1.31	1.25
1	A	258	GLU	CD-OE2	5.60	1.31	1.25
1	B	368	GLU	CD-OE2	5.58	1.31	1.25
1	A	242	GLU	CD-OE2	5.55	1.31	1.25
1	A	393	GLU	CD-OE2	5.55	1.31	1.25
1	A	177	GLU	CD-OE2	5.53	1.31	1.25
1	A	301	GLU	CD-OE2	5.50	1.31	1.25
1	B	205	GLU	CD-OE2	5.44	1.31	1.25
1	B	87	GLU	CD-OE2	5.41	1.31	1.25
1	B	241	GLU	CD-OE2	5.39	1.31	1.25
1	B	227	GLU	CD-OE2	5.38	1.31	1.25
1	A	283	GLU	CD-OE2	5.25	1.31	1.25
1	B	96	GLU	CD-OE2	5.25	1.31	1.25
1	A	108	GLU	CD-OE2	5.21	1.31	1.25
1	A	87	GLU	CD-OE2	5.17	1.31	1.25
1	B	108	GLU	CD-OE2	5.14	1.31	1.25
1	B	327	GLU	CD-OE2	5.14	1.31	1.25
1	A	327	GLU	CD-OE2	5.13	1.31	1.25
1	A	227	GLU	CD-OE2	5.03	1.31	1.25
1	A	241	GLU	CD-OE2	5.02	1.31	1.25

All (81) bond angle outliers are listed below:

Mol	Chain	Res	Type	Atoms	Z	Observed(°)	Ideal(°)
1	B	97	ARG	NE-CZ-NH1	15.59	128.09	120.30
1	B	97	ARG	NE-CZ-NH2	-11.66	114.47	120.30
1	A	270	ARG	NE-CZ-NH1	9.95	125.27	120.30
1	A	16	ARG	NE-CZ-NH1	9.79	125.19	120.30
1	B	37	ARG	NE-CZ-NH1	9.18	124.89	120.30
1	B	175	ASP	CB-CG-OD1	8.64	126.08	118.30
1	B	175	ASP	CB-CG-OD2	-8.22	110.90	118.30
1	A	259	ARG	NE-CZ-NH1	7.87	124.23	120.30

Continued on next page...

Continued from previous page...

Mol	Chain	Res	Type	Atoms	Z	Observed(°)	Ideal(°)
1	A	16	ARG	NE-CZ-NH2	-7.83	116.39	120.30
1	A	412	ASP	CB-CG-OD2	-7.45	111.59	118.30
1	B	350	SER	N-CA-CB	7.28	121.41	110.50
1	A	46	ASP	CB-CG-OD2	-7.15	111.86	118.30
1	B	259	ARG	NE-CZ-NH1	7.11	123.86	120.30
1	A	427	ASP	CB-CG-OD1	7.10	124.69	118.30
1	A	259	ARG	NE-CZ-NH2	-7.08	116.76	120.30
1	A	266	ASP	CB-CG-OD2	-7.01	111.99	118.30
1	A	307	ASP	CB-CG-OD1	6.98	124.58	118.30
1	B	366	ARG	NE-CZ-NH2	-6.92	116.84	120.30
1	B	141	ASP	CB-CG-OD2	-6.90	112.09	118.30
1	A	382	ASP	CB-CG-OD2	-6.80	112.18	118.30
1	A	419	ASP	CB-CG-OD2	-6.71	112.26	118.30
1	A	46	ASP	CB-CG-OD1	6.65	124.28	118.30
1	B	196	ASP	CB-CG-OD2	-6.56	112.39	118.30
1	B	228	ARG	NE-CZ-NH1	6.51	123.56	120.30
1	A	135	ASP	CB-CG-OD2	-6.51	112.44	118.30
1	B	46	ASP	CB-CG-OD1	6.47	124.12	118.30
1	A	427	ASP	CB-CG-OD2	-6.45	112.49	118.30
1	A	143	ASP	CB-CG-OD2	-6.33	112.60	118.30
1	B	135	ASP	CB-CG-OD1	6.33	123.99	118.30
1	A	314	ARG	NE-CZ-NH1	6.27	123.44	120.30
1	B	115	ASP	CB-CG-OD2	-6.26	112.66	118.30
1	B	3	ASP	CB-CG-OD2	-6.25	112.67	118.30
1	B	196	ASP	CB-CG-OD1	6.24	123.92	118.30
1	A	217	ASP	CB-CG-OD2	-6.24	112.68	118.30
1	B	234	ARG	NE-CZ-NH1	6.24	123.42	120.30
1	A	343	ASP	CB-CG-OD2	-6.15	112.76	118.30
1	A	292	ARG	NE-CZ-NH1	6.03	123.32	120.30
1	A	235	ARG	NE-CZ-NH1	5.98	123.29	120.30
1	A	140	ASP	CB-CG-OD2	-5.98	112.92	118.30
1	B	396	ASP	CB-CG-OD1	5.97	123.68	118.30
1	A	175	ASP	CB-CG-OD1	5.94	123.65	118.30
1	B	266	ASP	CB-CG-OD2	-5.92	112.97	118.30
1	B	170	ARG	NE-CZ-NH2	-5.90	117.35	120.30
1	B	401	ARG	NE-CZ-NH1	5.88	123.24	120.30
1	A	3	ASP	CB-CG-OD2	-5.86	113.03	118.30
1	A	143	ASP	CB-CG-OD1	5.81	123.53	118.30
1	A	141	ASP	N-CA-CB	5.77	120.99	110.60
1	B	307	ASP	CB-CG-OD2	-5.76	113.11	118.30
1	A	307	ASP	CB-CG-OD2	-5.75	113.12	118.30
1	B	141	ASP	CB-CG-OD1	5.75	123.47	118.30

Continued on next page...

Continued from previous page...

Mol	Chain	Res	Type	Atoms	Z	Observed(°)	Ideal(°)
1	A	196	ASP	CB-CG-OD2	-5.74	113.13	118.30
1	A	36	ASP	CB-CG-OD2	-5.72	113.15	118.30
1	A	115	ASP	CB-CG-OD2	-5.70	113.17	118.30
1	A	76	VAL	CA-CB-CG2	-5.70	102.35	110.90
1	A	140	ASP	CB-CG-OD1	5.70	123.43	118.30
1	A	38	ASP	CB-CG-OD2	-5.62	113.24	118.30
1	A	186	ARG	NE-CZ-NH1	5.60	123.10	120.30
1	B	396	ASP	CB-CG-OD2	-5.59	113.27	118.30
1	A	390	CYS	N-CA-CB	5.58	120.65	110.60
1	A	382	ASP	CB-CG-OD1	5.58	123.32	118.30
1	B	143	ASP	CB-CG-OD2	-5.57	113.28	118.30
1	A	135	ASP	CB-CG-OD1	5.57	123.31	118.30
1	A	266	ASP	CB-CG-OD1	5.54	123.29	118.30
1	A	284	PHE	CB-CG-CD1	-5.54	116.92	120.80
1	A	229	ASP	CB-CG-OD1	5.53	123.28	118.30
1	A	3	ASP	CB-CG-OD1	5.50	123.25	118.30
1	B	36	ASP	CB-CG-OD2	-5.48	113.37	118.30
1	A	155	PRO	N-CA-CB	5.43	109.82	103.30
1	A	308	LEU	CB-CA-C	5.40	120.45	110.20
1	A	235	ARG	NE-CZ-NH2	-5.39	117.60	120.30
1	B	83	GLY	N-CA-C	5.29	126.31	113.10
1	A	376	THR	CA-CB-CG2	-5.25	105.04	112.40
1	B	135	ASP	CB-CG-OD2	-5.23	113.59	118.30
1	B	38	ASP	CB-CG-OD2	-5.21	113.61	118.30
1	B	10	ARG	NE-CZ-NH1	5.18	122.89	120.30
1	A	419	ASP	CB-CG-OD1	5.12	122.91	118.30
1	A	344	PRO	N-CA-CB	5.10	109.42	103.30
1	A	343	ASP	CB-CG-OD1	5.09	122.89	118.30
1	B	186	ARG	NE-CZ-NH1	5.09	122.84	120.30
1	B	419	ASP	CB-CG-OD2	-5.04	113.77	118.30
1	A	83	GLY	C-N-CA	-5.03	109.12	121.70

There are no chirality outliers.

There are no planarity outliers.

5.2 Close contacts ⓘ

In the following table, the Non-H and H(model) columns list the number of non-hydrogen atoms and hydrogen atoms in the chain respectively. The H(added) column lists the number of hydrogens added by MolProbity. The Clashes column lists the number of clashes within the asymmetric unit, and the number in parentheses is this value normalized per 1000 atoms of the molecule in the

chain. The Symm-Clashes column gives symmetry related clashes, in the same way as for the Clashes column.

Mol	Chain	Non-H	H(model)	H(added)	Clashes	Symm-Clashes
1	A	3469	0	3498	188	0
1	B	3452	0	3481	207	0
2	A	31	0	12	10	0
2	B	31	0	12	8	0
3	A	82	0	0	3	0
3	B	48	0	0	4	0
All	All	7113	0	7003	394	0

Clashscore is defined as the number of clashes calculated for the entry per 1000 atoms (including hydrogens) of the entry. The overall clashscore for this entry is 28.

All (394) close contacts within the same asymmetric unit are listed below.

Atom-1	Atom-2	Distance(Å)	Clash(Å)
1:B:179:ALA:HB3	1:B:180:GLN:HE21	1.19	1.00
1:B:440:LEU:HG	1:B:444:LEU:HD22	1.40	0.97
1:B:131:VAL:HG22	1:B:285:TYR:HB3	1.45	0.95
1:A:117:VAL:HG21	1:A:197:MET:HE3	1.48	0.95
1:B:278:LEU:HD22	1:B:287:ILE:HD11	1.51	0.93
1:B:278:LEU:HD13	1:B:287:ILE:HD11	1.52	0.91
1:A:54:ALA:HB3	1:A:55:PRO:HD3	1.54	0.89
1:A:133:GLY:HA2	1:A:152:ILE:HD11	1.55	0.87
1:B:236:HIS:CE1	2:B:1001:ATP:H5'2	2.11	0.85
1:B:72:ILE:HD12	1:B:73:THR:HG23	1.58	0.84
1:B:154:TYR:HE1	1:B:172:VAL:HG12	1.41	0.84
1:B:72:ILE:CD1	1:B:73:THR:HG23	2.06	0.84
1:B:133:GLY:HA2	1:B:152:ILE:HD11	1.60	0.84
1:A:72:ILE:CD1	1:A:73:THR:HG23	2.09	0.83
1:A:72:ILE:HD12	1:A:73:THR:N	1.94	0.83
1:B:440:LEU:HG	1:B:444:LEU:CD2	2.07	0.83
1:B:419:ASP:HB3	1:B:423:ARG:NH1	1.94	0.82
1:B:142:MET:HA	1:B:145:ASN:HB2	1.62	0.82
1:B:154:TYR:CE1	1:B:172:VAL:HG12	2.16	0.81
1:B:340:ASN:HD22	1:B:384:MET:HA	1.44	0.81
1:A:133:GLY:HA2	1:A:152:ILE:CD1	2.12	0.79
1:B:297:HIS:CG	1:B:298:PRO:HD3	2.17	0.79
1:B:323:ILE:HD12	1:B:323:ILE:H	1.48	0.78
1:B:179:ALA:HB3	1:B:180:GLN:NE2	1.96	0.77
1:B:369:SER:OG	1:B:371:ILE:HG12	1.84	0.77
1:B:249:THR:OG1	1:B:251:GLU:HG2	1.85	0.76
1:B:151:ARG:HG2	1:B:152:ILE:N	1.99	0.76

Continued on next page...

Continued from previous page...

Atom-1	Atom-2	Distance(Å)	Clash(Å)
1:B:236:HIS:HE1	2:B:1001:ATP:H5'2	1.48	0.75
1:B:278:LEU:CD2	1:B:287:ILE:HD11	2.16	0.75
1:A:117:VAL:CG2	1:A:197:MET:HE3	2.16	0.75
1:A:298:PRO:O	1:A:302:MET:HG2	1.88	0.74
1:B:278:LEU:HD13	1:B:287:ILE:CD1	2.17	0.73
1:A:91:PHE:O	1:A:95:VAL:HG23	1.88	0.73
1:B:278:LEU:CD1	1:B:287:ILE:HD11	2.18	0.72
1:B:278:LEU:HD22	1:B:287:ILE:CD1	2.19	0.72
1:A:309:ILE:O	1:A:313:LEU:HG	1.89	0.72
1:B:217:ASP:OD2	1:B:221:ASN:HB2	1.90	0.71
1:A:250:PRO:O	1:A:254:ARG:HD3	1.89	0.71
1:A:370:HIS:H	1:A:370:HIS:CD2	2.07	0.71
1:B:37:ARG:HG3	1:B:37:ARG:HH11	1.55	0.70
1:B:441:GLU:HG2	1:B:446:LEU:HD13	1.73	0.70
1:A:72:ILE:HD12	1:A:73:THR:HG23	1.72	0.70
1:A:324:LYS:HB2	1:A:327:GLU:OE2	1.92	0.69
1:A:36:ASP:HB3	1:A:39:LEU:CD1	2.22	0.69
1:A:372:TYR:HB3	1:B:358:HIS:CE1	2.27	0.69
1:A:112:LEU:HG	1:A:113:MET:CE	2.22	0.69
1:A:345:ASN:HD22	1:A:345:ASN:N	1.89	0.69
1:A:295:VAL:O	1:A:387:LYS:HE3	1.91	0.69
1:B:435:THR:HB	3:B:1316:HOH:O	1.92	0.69
1:B:72:ILE:HD12	1:B:73:THR:N	2.09	0.68
1:B:346:THR:OG1	1:B:348:LEU:HD12	1.94	0.67
1:B:419:ASP:O	1:B:423:ARG:HD2	1.94	0.67
1:B:323:ILE:HD12	1:B:323:ILE:N	2.09	0.67
1:A:278:LEU:N	1:A:287:ILE:HD11	2.10	0.66
1:B:252:LEU:HD22	1:B:284:PHE:HE1	1.59	0.66
1:A:427:ASP:OD2	1:A:429:ASN:HB2	1.96	0.66
1:B:256:ILE:HD11	1:B:277:PHE:CE2	2.31	0.65
1:A:440:LEU:HG	1:A:444:LEU:HD22	1.78	0.65
1:B:184:MET:O	1:B:188:GLU:HG3	1.96	0.65
1:A:82:TYR:CZ	1:A:295:VAL:HG22	2.32	0.65
1:A:93:GLU:OE1	1:A:111:ARG:NH1	2.29	0.65
1:A:138:LEU:HD21	1:A:200:MET:HB2	1.79	0.64
1:A:63:ILE:HB	1:A:64:PRO:HD3	1.78	0.64
1:B:217:ASP:CG	1:B:221:ASN:HB2	2.18	0.64
1:B:288:LYS:NZ	2:B:1001:ATP:O3G	2.31	0.64
1:A:403:LYS:O	1:A:407:GLN:HG3	1.98	0.64
1:B:112:LEU:HG	1:B:113:MET:CE	2.27	0.64
1:A:231:SER:O	1:A:437:ILE:HA	1.96	0.64
1:B:80:PRO:HB2	1:B:86:SER:HA	1.80	0.63

Continued on next page...

Continued from previous page...

Atom-1	Atom-2	Distance(Å)	Clash(Å)
1:A:142:MET:HE3	1:A:179:ALA:HA	1.80	0.63
1:A:274:THR:CB	1:A:294:GLN:HE21	2.10	0.63
1:B:112:LEU:HG	1:B:113:MET:HE2	1.78	0.63
1:B:113:MET:CE	1:B:119:ALA:HA	2.29	0.62
1:B:133:GLY:CA	1:B:152:ILE:HD11	2.29	0.62
1:B:116:LYS:O	1:B:120:ILE:HG13	1.99	0.62
1:A:311:GLU:OE2	1:A:314:ARG:NH1	2.33	0.61
1:A:207:PRO:CA	1:A:280:GLU:HG3	2.29	0.61
1:B:259:ARG:HG3	1:B:259:ARG:HH11	1.65	0.61
1:B:138:LEU:HD23	1:B:182:ILE:HG12	1.82	0.61
1:B:242:GLU:OE2	1:B:333:HIS:NE2	2.32	0.61
1:B:4:LYS:HB2	1:B:27:LYS:HB2	1.82	0.61
1:B:53:PRO:HB2	1:B:55:PRO:HD2	1.83	0.61
1:A:12:GLU:OE2	1:A:387:LYS:NZ	2.34	0.61
1:B:186:ARG:HG2	1:B:198:VAL:HG13	1.83	0.60
1:A:36:ASP:HB3	1:A:39:LEU:HD12	1.83	0.60
1:B:427:ASP:OD1	1:B:443:LYS:HE2	2.01	0.60
1:A:184:MET:O	1:A:188:GLU:HG3	2.02	0.60
1:B:212:ILE:N	1:B:212:ILE:HD12	2.17	0.60
1:A:115:ASP:HB3	1:A:118:SER:OG	2.02	0.60
1:B:245:ALA:HB3	1:B:248:ILE:HG13	1.83	0.60
1:A:206:ASN:HD22	1:A:436:ASN:ND2	2.00	0.60
1:A:190:LYS:O	1:A:194:SER:HA	2.00	0.60
1:A:288:LYS:NZ	2:A:1000:ATP:O3G	2.31	0.60
1:B:154:TYR:HE1	1:B:172:VAL:CG1	2.14	0.59
1:B:19:ARG:HD2	3:B:1307:HOH:O	2.01	0.59
1:B:298:PRO:O	1:B:302:MET:HG2	2.03	0.59
1:A:169:MET:HE3	2:A:1000:ATP:H5'1	1.84	0.59
1:A:112:LEU:CD2	1:A:113:MET:HE3	2.31	0.59
1:A:5:ILE:HG23	1:A:26:ILE:CG2	2.32	0.59
1:B:200:MET:HG3	1:B:201:GLU:N	2.17	0.59
1:B:425:MET:O	1:B:431:GLN:NE2	2.36	0.59
1:B:427:ASP:OD2	1:B:429:ASN:HB2	2.03	0.59
1:B:441:GLU:O	1:B:446:LEU:HB2	2.02	0.58
1:B:232:MET:HE2	3:B:1316:HOH:O	2.03	0.58
1:B:115:ASP:HB3	1:B:118:SER:HB2	1.84	0.58
1:A:249:THR:OG1	1:A:251:GLU:HG2	2.03	0.58
1:A:254:ARG:O	1:A:258:GLU:HG3	2.04	0.58
1:A:358:HIS:O	1:A:409:LEU:HD12	2.04	0.58
1:A:164:GLY:CA	1:A:193:PHE:HE2	2.17	0.58
1:A:379:PRO:HD3	3:A:1228:HOH:O	2.03	0.58
1:B:344:PRO:HG3	1:B:416:THR:O	2.04	0.58

Continued on next page...

Continued from previous page...

Atom-1	Atom-2	Distance(Å)	Clash(Å)
1:B:145:ASN:HD22	1:B:182:ILE:HD13	1.67	0.58
1:B:346:THR:CB	1:B:348:LEU:HD12	2.34	0.58
1:A:154:TYR:HB3	1:A:155:PRO:HA	1.85	0.58
1:B:148:ILE:HA	1:B:151:ARG:HD2	1.86	0.58
1:A:164:GLY:HA3	1:A:193:PHE:CE2	2.39	0.58
1:B:172:VAL:HG13	1:B:177:GLU:HB2	1.85	0.57
1:B:145:ASN:ND2	1:B:182:ILE:HD13	2.18	0.57
1:A:63:ILE:CB	1:A:64:PRO:HD3	2.34	0.57
1:A:236:HIS:NE2	2:A:1000:ATP:O2G	2.37	0.57
1:B:256:ILE:HD11	1:B:277:PHE:CZ	2.39	0.57
1:A:148:ILE:O	1:A:151:ARG:HB3	2.02	0.57
1:A:214:VAL:HG22	1:A:273:GLY:O	2.04	0.57
1:B:133:GLY:HA2	1:B:152:ILE:CD1	2.32	0.57
1:B:259:ARG:HH11	1:B:259:ARG:CG	2.16	0.57
1:B:370:HIS:CD2	1:B:370:HIS:H	2.22	0.57
1:A:149:ALA:O	1:A:153:GLY:N	2.34	0.57
1:A:53:PRO:HB2	1:A:55:PRO:HD2	1.87	0.57
1:A:164:GLY:N	1:A:193:PHE:HE2	2.03	0.57
1:A:203:TYR:C	1:A:204:LEU:HD12	2.25	0.57
1:A:141:ASP:O	1:A:144:LYS:HD2	2.05	0.57
1:B:185:THR:O	1:B:188:GLU:N	2.38	0.57
1:A:348:LEU:HD12	1:A:349:PRO:HD2	1.87	0.57
1:A:296:GLU:N	1:A:296:GLU:OE2	2.37	0.56
1:B:147:ALA:O	1:B:151:ARG:HB3	2.06	0.56
1:B:37:ARG:CG	1:B:37:ARG:HH11	2.18	0.56
1:B:340:ASN:HD22	1:B:384:MET:CA	2.15	0.56
1:A:112:LEU:HG	1:A:113:MET:HE3	1.85	0.56
1:B:210:VAL:O	1:B:277:PHE:HB2	2.06	0.56
1:A:207:PRO:HB3	1:A:280:GLU:HG3	1.88	0.56
1:B:278:LEU:HD22	1:B:287:ILE:CG1	2.35	0.55
1:A:112:LEU:HG	1:A:113:MET:HE2	1.88	0.55
1:A:421:GLN:HA	1:A:421:GLN:OE1	2.06	0.55
1:A:336:GLU:HB2	1:A:389:ILE:HG12	1.89	0.55
1:B:170:ARG:HE	1:B:181:SER:HA	1.71	0.55
1:B:216:ALA:O	1:B:315:ILE:HD13	2.07	0.55
1:B:63:ILE:HB	1:B:64:PRO:HD3	1.87	0.55
1:A:207:PRO:HA	1:A:280:GLU:HG3	1.88	0.55
1:B:141:ASP:OD1	1:B:144:LYS:HD2	2.08	0.55
1:B:105:PRO:HG2	1:B:110:ILE:CG1	2.37	0.54
1:B:164:GLY:N	1:B:193:PHE:HE2	2.05	0.54
1:A:274:THR:HG21	1:A:294:GLN:NE2	2.22	0.54
1:A:112:LEU:HD23	1:A:113:MET:HE3	1.89	0.54

Continued on next page...

Continued from previous page...

Atom-1	Atom-2	Distance(Å)	Clash(Å)
1:A:212:ILE:HD13	1:A:277:PHE:CD1	2.43	0.54
1:B:186:ARG:HG2	1:B:198:VAL:CG1	2.37	0.54
1:A:369:SER:HB2	1:A:385:ILE:O	2.07	0.54
1:B:75:ALA:O	1:B:100:PHE:HE1	1.91	0.54
1:A:236:HIS:CE1	2:A:1000:ATP:H5'2	2.42	0.54
1:A:54:ALA:HB3	1:A:55:PRO:CD	2.33	0.54
1:A:339:ILE:C	1:A:340:ASN:HD22	2.11	0.54
1:A:38:ASP:HB2	3:A:1327:HOH:O	2.08	0.54
1:B:165:GLY:HA2	2:B:1001:ATP:O3B	2.08	0.53
1:B:62:ASN:OD1	1:B:64:PRO:HD2	2.08	0.53
1:A:106:LYS:HB2	1:A:108:GLU:HG3	1.90	0.53
1:A:357:PHE:HA	1:A:410:ILE:O	2.08	0.53
1:B:278:LEU:CG	1:B:287:ILE:HD11	2.38	0.53
1:A:276:GLU:OE1	1:A:288:LYS:HE3	2.07	0.53
1:A:252:LEU:O	1:A:255:TYR:HB3	2.09	0.53
1:A:346:THR:HB	1:A:348:LEU:HB2	1.89	0.53
1:B:190:LYS:O	1:B:194:SER:HA	2.08	0.53
1:A:402:MET:O	1:A:406:LEU:HG	2.09	0.53
1:B:152:ILE:CD1	1:B:200:MET:HG2	2.38	0.53
1:A:261:ALA:O	1:A:265:VAL:HG23	2.09	0.53
1:A:129:PRO:HG2	1:A:256:ILE:CD1	2.39	0.52
1:A:143:ASP:OD2	1:A:146:ARG:NH1	2.43	0.52
1:B:72:ILE:C	1:B:72:ILE:HD12	2.30	0.52
1:A:193:PHE:CD1	1:A:193:PHE:N	2.76	0.52
1:B:169:MET:CE	2:B:1001:ATP:H5'1	2.40	0.52
1:B:19:ARG:O	1:B:23:GLU:HG3	2.10	0.52
1:B:231:SER:HB3	1:B:437:ILE:HG22	1.90	0.52
1:A:425:MET:O	1:A:431:GLN:NE2	2.43	0.52
1:B:93:GLU:O	1:B:97:ARG:HB2	2.09	0.52
1:A:68:SER:O	1:A:72:ILE:HG13	2.08	0.52
1:B:346:THR:HB	1:B:348:LEU:HD12	1.91	0.52
1:A:165:GLY:N	2:A:1000:ATP:O1B	2.43	0.52
1:B:145:ASN:HD22	1:B:182:ILE:CD1	2.22	0.52
1:A:421:GLN:O	1:A:425:MET:HG2	2.10	0.52
1:A:411:ILE:HG22	1:A:411:ILE:O	2.10	0.52
1:B:441:GLU:CG	1:B:446:LEU:HD13	2.40	0.52
1:A:413:GLY:O	1:A:414:ILE:HG23	2.10	0.52
1:A:206:ASN:N	1:A:280:GLU:OE2	2.43	0.52
1:B:314:ARG:O	1:B:319:GLN:HB2	2.09	0.52
1:B:261:ALA:O	1:B:264:CYS:HB2	2.09	0.52
1:B:101:ILE:O	1:B:101:ILE:HG22	2.09	0.51
1:B:109:THR:O	1:B:112:LEU:HB3	2.11	0.51

Continued on next page...

Continued from previous page...

Atom-1	Atom-2	Distance(Å)	Clash(Å)
1:B:113:MET:HE1	1:B:119:ALA:HA	1.93	0.51
1:B:85:LEU:HB3	1:B:91:PHE:CD1	2.45	0.51
1:A:133:GLY:HA3	1:A:200:MET:O	2.11	0.51
1:B:297:HIS:CD2	1:B:298:PRO:HD3	2.44	0.51
1:A:360:PRO:HD3	1:A:409:LEU:HD13	1.92	0.51
1:B:164:GLY:HA3	1:B:193:PHE:CE2	2.46	0.51
1:A:353:LYS:HE3	1:A:374:GLY:HA2	1.93	0.51
1:B:346:THR:HB	1:B:348:LEU:CD1	2.41	0.51
1:A:427:ASP:OD1	1:A:439:TYR:OH	2.28	0.51
1:A:277:PHE:C	1:A:287:ILE:HD11	2.32	0.50
1:A:164:GLY:HA3	1:A:193:PHE:HE2	1.76	0.50
1:A:112:LEU:CG	1:A:113:MET:HE3	2.41	0.50
1:B:440:LEU:O	1:B:444:LEU:HD22	2.12	0.50
1:A:204:LEU:HD12	1:A:204:LEU:N	2.25	0.50
1:B:4:LYS:HD2	1:B:75:ALA:HA	1.93	0.50
1:B:6:VAL:HB	1:B:78:ILE:HG12	1.93	0.50
1:B:297:HIS:N	1:B:298:PRO:HD2	2.27	0.50
1:A:399:ILE:HD13	1:A:430:PHE:CE1	2.47	0.50
1:A:391:TYR:O	1:A:401:ARG:NH1	2.41	0.50
1:B:148:ILE:HG22	1:B:152:ILE:HD12	1.93	0.49
1:A:72:ILE:C	1:A:72:ILE:HD12	2.32	0.49
1:B:343:ASP:O	1:B:347:PHE:N	2.45	0.49
1:A:203:TYR:CD1	2:A:1000:ATP:C2	3.00	0.49
1:A:340:ASN:N	1:A:340:ASN:HD22	2.08	0.49
1:A:164:GLY:CA	1:A:193:PHE:CE2	2.95	0.49
1:B:323:ILE:HG22	1:B:324:LYS:N	2.27	0.49
1:B:427:ASP:OD2	1:B:429:ASN:N	2.44	0.49
1:B:163:GLY:C	1:B:193:PHE:HE2	2.15	0.49
1:B:419:ASP:HB3	1:B:423:ARG:HH11	1.76	0.49
1:B:346:THR:O	1:B:347:PHE:HB2	2.13	0.49
1:B:105:PRO:HG2	1:B:110:ILE:HG13	1.94	0.49
1:B:325:GLN:O	1:B:327:GLU:N	2.46	0.49
1:A:207:PRO:CB	1:A:280:GLU:HG3	2.43	0.49
1:A:201:GLU:OE2	2:A:1000:ATP:N6	2.38	0.49
1:B:358:HIS:O	1:B:409:LEU:HA	2.13	0.49
1:B:211:GLU:C	1:B:212:ILE:HD12	2.33	0.49
1:A:249:THR:HG23	1:A:252:LEU:HD12	1.95	0.49
1:A:370:HIS:N	1:A:370:HIS:CD2	2.80	0.49
1:A:399:ILE:HD13	1:A:430:PHE:HE1	1.78	0.49
1:A:443:LYS:C	1:A:445:GLY:H	2.15	0.48
1:A:241:GLU:OE1	1:A:338:ARG:NE	2.41	0.48
1:B:297:HIS:ND1	1:B:298:PRO:HD3	2.28	0.48

Continued on next page...

Continued from previous page...

Atom-1	Atom-2	Distance(Å)	Clash(Å)
1:A:236:HIS:HE2	2:A:1000:ATP:PG	2.37	0.48
1:A:196:ASP:O	1:A:198:VAL:HG13	2.14	0.48
1:B:233:GLN:O	1:B:440:LEU:HB3	2.13	0.48
1:A:217:ASP:OD1	1:A:221:ASN:HB2	2.14	0.48
1:B:62:ASN:O	1:B:66:ILE:HG13	2.14	0.48
1:B:13:ILE:HD12	1:B:13:ILE:HA	1.63	0.48
1:A:204:LEU:CD1	1:A:204:LEU:N	2.76	0.47
1:A:17:ILE:O	1:A:17:ILE:HG22	2.15	0.47
1:A:62:ASN:ND2	1:A:65:ALA:HB2	2.29	0.47
1:A:186:ARG:HG2	1:A:196:ASP:O	2.14	0.47
1:A:133:GLY:HA2	1:A:152:ILE:HD13	1.95	0.47
1:B:200:MET:HB2	1:B:200:MET:HE2	1.56	0.47
1:B:16:ARG:HA	3:B:1307:HOH:O	2.14	0.47
1:B:301:GLU:CG	1:B:308:LEU:HD12	2.45	0.47
1:B:156:VAL:HG13	1:B:157:ILE:N	2.29	0.47
1:B:16:ARG:CZ	1:B:309:ILE:HG13	2.45	0.47
1:B:37:ARG:CG	1:B:37:ARG:NH1	2.78	0.47
1:B:64:PRO:O	1:B:68:SER:HB2	2.15	0.47
1:B:133:GLY:HA2	1:B:201:GLU:HA	1.97	0.46
1:B:297:HIS:N	1:B:298:PRO:CD	2.79	0.46
1:B:195:ASN:C	1:B:197:MET:H	2.16	0.46
1:B:252:LEU:HD22	1:B:284:PHE:CE1	2.46	0.46
1:A:206:ASN:HD22	1:A:436:ASN:HD21	1.61	0.46
1:A:227:GLU:CD	1:A:227:GLU:H	2.18	0.46
1:B:249:THR:HG1	1:B:251:GLU:HG2	1.77	0.46
1:B:440:LEU:O	1:B:444:LEU:HB2	2.15	0.46
1:A:95:VAL:HG13	1:A:100:PHE:HB2	1.96	0.46
1:A:92:ALA:O	1:A:96:GLU:HG3	2.15	0.46
1:A:196:ASP:N	1:A:196:ASP:OD2	2.46	0.46
1:B:380:TYR:HB2	1:B:381:TYR:CE1	2.51	0.46
1:B:63:ILE:N	1:B:64:PRO:CD	2.79	0.46
1:B:180:GLN:HB3	1:B:184:MET:SD	2.56	0.46
1:A:85:LEU:HB3	1:A:91:PHE:CD1	2.51	0.46
1:A:399:ILE:CD1	1:A:430:PHE:CE1	2.98	0.46
1:A:159:LYS:HE3	2:A:1000:ATP:N7	2.31	0.46
1:A:4:LYS:HE2	1:A:47:GLU:OE2	2.16	0.46
1:B:152:ILE:HG21	1:B:156:VAL:HG22	1.97	0.46
1:A:232:MET:CB	1:A:240:VAL:HB	2.46	0.46
1:B:295:VAL:HG11	1:B:338:ARG:CZ	2.46	0.46
1:A:131:VAL:HG12	1:A:132:PRO:N	2.31	0.46
1:A:117:VAL:HG23	1:A:161:SER:OG	2.17	0.45
1:A:297:HIS:N	1:A:298:PRO:CD	2.79	0.45

Continued on next page...

Continued from previous page...

Atom-1	Atom-2	Distance(Å)	Clash(Å)
1:A:225:LEU:O	1:A:226:ALA:HB3	2.14	0.45
1:A:193:PHE:HD1	1:A:193:PHE:H	1.63	0.45
1:A:378:PRO:HA	1:A:379:PRO:HD3	1.82	0.45
1:A:62:ASN:HB3	1:A:65:ALA:HB3	1.98	0.45
1:B:224:TYR:C	1:B:225:LEU:HG	2.36	0.45
1:B:335:VAL:HG12	1:B:336:GLU:N	2.31	0.45
1:A:142:MET:CE	1:A:179:ALA:HA	2.47	0.45
1:B:309:ILE:O	1:B:312:GLN:HB2	2.17	0.45
1:A:212:ILE:HD13	1:A:277:PHE:CE1	2.51	0.45
1:B:113:MET:HE2	1:B:119:ALA:HA	1.98	0.45
1:A:5:ILE:HG23	1:A:26:ILE:HG21	1.97	0.45
1:A:37:ARG:NH2	1:A:50:CYS:SG	2.89	0.45
1:A:138:LEU:HA	1:A:138:LEU:HD12	1.46	0.45
1:B:152:ILE:HG21	1:B:156:VAL:CG2	2.46	0.45
1:A:274:THR:CB	1:A:294:GLN:NE2	2.79	0.45
1:A:292:ARG:HG3	1:A:293:ILE:O	2.17	0.45
1:B:165:GLY:N	2:B:1001:ATP:O1B	2.48	0.45
1:B:301:GLU:HG3	1:B:308:LEU:HD12	1.98	0.45
1:A:348:LEU:HD12	1:A:348:LEU:HA	1.79	0.45
1:B:303:ILE:HD12	1:B:330:VAL:HG22	1.99	0.45
1:B:138:LEU:HA	1:B:138:LEU:HD12	1.75	0.45
1:B:142:MET:SD	1:B:142:MET:N	2.90	0.44
1:B:399:ILE:HG22	1:B:403:LYS:HD2	1.99	0.44
1:B:156:VAL:CG1	1:B:157:ILE:N	2.80	0.44
1:B:113:MET:HE1	1:B:122:ALA:HB3	1.99	0.44
1:A:251:GLU:H	1:A:251:GLU:CD	2.20	0.44
1:B:307:ASP:O	1:B:311:GLU:HG2	2.18	0.44
1:B:259:ARG:NH1	1:B:259:ARG:CG	2.78	0.44
1:B:315:ILE:HD11	1:B:321:LEU:HD21	1.99	0.44
1:B:200:MET:CG	1:B:201:GLU:N	2.80	0.44
1:A:89:ALA:O	1:A:93:GLU:HB2	2.18	0.44
1:B:164:GLY:CA	1:B:193:PHE:CE2	3.00	0.44
1:A:363:PHE:O	1:A:401:ARG:HD3	2.16	0.44
1:A:77:ALA:HB2	1:A:101:ILE:HB	2.00	0.44
1:B:378:PRO:HA	1:B:379:PRO:HD3	1.77	0.44
1:A:307:ASP:O	1:A:311:GLU:HG2	2.16	0.44
1:A:278:LEU:HD22	1:A:287:ILE:HG12	1.99	0.44
1:A:233:GLN:O	1:A:440:LEU:HB3	2.18	0.44
1:A:169:MET:CE	2:A:1000:ATP:H5'1	2.48	0.44
1:B:32:HIS:HE1	1:B:37:ARG:HH11	1.66	0.44
1:B:154:TYR:HA	1:B:155:PRO:C	2.39	0.43
1:B:427:ASP:OD1	1:B:439:TYR:OH	2.30	0.43

Continued on next page...

Continued from previous page...

Atom-1	Atom-2	Distance(Å)	Clash(Å)
1:A:144:LYS:O	1:A:147:ALA:HB3	2.18	0.43
1:B:421:GLN:O	1:B:425:MET:HG2	2.19	0.43
1:B:403:LYS:HG3	1:B:425:MET:HB3	2.00	0.43
1:B:193:PHE:O	1:B:194:SER:HB2	2.18	0.43
1:A:212:ILE:N	1:A:212:ILE:HD12	2.32	0.43
1:A:427:ASP:HB3	1:A:430:PHE:CB	2.49	0.43
1:A:278:LEU:HA	1:A:278:LEU:HD12	1.83	0.43
1:B:195:ASN:OD1	1:B:197:MET:HB2	2.18	0.43
1:A:116:LYS:O	1:A:119:ALA:HB3	2.19	0.43
1:B:133:GLY:C	1:B:152:ILE:HD11	2.39	0.43
1:A:444:LEU:HD12	1:A:444:LEU:HA	1.40	0.43
1:B:156:VAL:HG11	1:B:200:MET:SD	2.58	0.43
1:A:440:LEU:HA	1:A:440:LEU:HD12	1.78	0.43
1:A:348:LEU:HA	1:A:349:PRO:HD2	1.76	0.43
1:B:164:GLY:CA	1:B:193:PHE:HE2	2.31	0.43
1:A:108:GLU:HG2	1:A:108:GLU:H	1.21	0.43
1:A:110:ILE:HD13	1:A:110:ILE:HG21	1.73	0.43
1:A:232:MET:CG	1:A:240:VAL:HB	2.49	0.42
1:B:124:LYS:NZ	1:B:135:ASP:OD2	2.29	0.42
1:A:217:ASP:HA	1:A:315:ILE:HG12	2.00	0.42
1:B:212:ILE:CD1	1:B:212:ILE:N	2.82	0.42
1:B:67:ILE:O	1:B:70:ALA:HB3	2.19	0.42
1:A:298:PRO:HB3	1:A:366:ARG:CZ	2.49	0.42
1:B:294:GLN:HE21	1:B:294:GLN:HB3	1.49	0.42
1:B:117:VAL:HG23	1:B:161:SER:OG	2.18	0.42
1:B:169:MET:HE3	2:B:1001:ATP:H5'1	2.01	0.42
1:B:157:ILE:HB	1:B:203:TYR:HB2	2.02	0.42
1:A:280:GLU:O	1:A:281:ASN:HB2	2.20	0.42
1:A:298:PRO:HB3	1:A:366:ARG:NH1	2.34	0.42
1:B:252:LEU:HD23	1:B:252:LEU:HA	1.80	0.42
1:B:40:LYS:HA	1:B:40:LYS:HD3	1.81	0.42
1:B:256:ILE:HD13	1:B:284:PHE:CG	2.54	0.42
1:B:33:SER:HB2	1:B:53:PRO:O	2.19	0.42
1:A:342:GLU:O	1:A:344:PRO:HD3	2.20	0.42
1:A:1(A):HIS:HA	3:A:1239:HOH:O	2.19	0.42
1:A:31:VAL:HG23	1:A:31:VAL:O	2.18	0.42
1:B:133:GLY:HA3	1:B:200:MET:O	2.20	0.41
1:B:213:GLN:O	1:B:225:LEU:HD12	2.19	0.41
1:A:211:GLU:C	1:A:212:ILE:HD12	2.40	0.41
1:B:112:LEU:HG	1:B:113:MET:HE3	2.01	0.41
1:B:364:GLY:O	1:B:390:CYS:HA	2.20	0.41
1:B:236:HIS:HE2	2:B:1001:ATP:PG	2.44	0.41

Continued on next page...

Continued from previous page...

Atom-1	Atom-2	Distance(Å)	Clash(Å)
1:B:101:ILE:HD13	1:B:101:ILE:HG21	1.80	0.41
1:A:354:ILE:O	1:A:374:GLY:N	2.47	0.41
1:A:410:ILE:O	1:A:410:ILE:HG22	2.12	0.41
1:B:116:LYS:O	1:B:119:ALA:HB3	2.20	0.41
1:B:368:GLU:HB2	1:B:387:LYS:HB2	2.03	0.41
1:B:424:ILE:C	1:B:426:ASN:N	2.74	0.41
1:B:419:ASP:HB3	1:B:423:ARG:HH12	1.81	0.41
1:B:31:VAL:HB	1:B:51:ILE:CG2	2.51	0.41
1:A:6:VAL:HG12	1:A:7:ILE:N	2.34	0.41
1:B:217:ASP:OD1	1:B:221:ASN:HB2	2.21	0.41
1:A:163:GLY:C	1:A:193:PHE:HE2	2.24	0.41
1:A:443:LYS:C	1:A:445:GLY:N	2.73	0.41
1:A:152:ILE:HD13	1:A:152:ILE:HG21	1.62	0.41
1:B:18:LEU:C	1:B:18:LEU:HD23	2.40	0.41
1:A:262:LYS:HE2	1:A:266:ASP:OD1	2.21	0.41
1:A:63:ILE:CB	1:A:64:PRO:CD	2.99	0.41
1:A:296:GLU:O	1:A:299:VAL:HG22	2.20	0.41
1:B:215:LEU:HD23	1:B:215:LEU:HA	1.91	0.41
1:A:393:GLU:OE2	1:A:393:GLU:N	2.43	0.41
1:A:157:ILE:HG13	1:A:171:VAL:HG22	2.03	0.41
1:A:427:ASP:HB3	1:A:430:PHE:HB3	2.01	0.41
1:B:23:GLU:OE1	1:B:310:LYS:HE3	2.20	0.40
1:A:129:PRO:HG2	1:A:256:ILE:HD11	2.03	0.40
1:B:152:ILE:CG2	1:B:156:VAL:CG2	2.99	0.40
1:B:443:LYS:C	1:B:445:GLY:H	2.24	0.40
1:A:152:ILE:CG2	1:A:202:LYS:HB2	2.52	0.40
1:B:343:ASP:O	1:B:347:PHE:HA	2.22	0.40
1:A:193:PHE:O	1:A:194:SER:HB2	2.21	0.40
1:A:54:ALA:CB	1:A:55:PRO:HD3	2.36	0.40
1:B:323:ILE:H	1:B:323:ILE:CD1	2.25	0.40
1:B:254:ARG:O	1:B:258:GLU:HB2	2.22	0.40

There are no symmetry-related clashes.

5.3 Torsion angles

5.3.1 Protein backbone ⓘ

In the following table, the Percentiles column shows the percent Ramachandran outliers of the chain as a percentile score with respect to all X-ray entries followed by that with respect to entries of similar resolution. The Analysed column shows the number of residues for which the backbone conformation was analysed, and the total number of residues.

Mol	Chain	Analysed	Favoured	Allowed	Outliers	Percentiles	
1	A	449/452 (99%)	406 (90%)	41 (9%)	2 (0%)	43	66
1	B	446/452 (99%)	407 (91%)	32 (7%)	7 (2%)	14	23
All	All	895/904 (99%)	813 (91%)	73 (8%)	9 (1%)	22	38

All (9) Ramachandran outliers are listed below:

Mol	Chain	Res	Type
1	A	142	MET
1	B	181	SER
1	B	179	ALA
1	B	196	ASP
1	B	226	ALA
1	A	382	ASP
1	B	326	GLU
1	B	444	LEU
1	B	83	GLY

5.3.2 Protein sidechains ⓘ

In the following table, the Percentiles column shows the percent sidechain outliers of the chain as a percentile score with respect to all X-ray entries followed by that with respect to entries of similar resolution. The Analysed column shows the number of residues for which the sidechain conformation was analysed, and the total number of residues.

Mol	Chain	Analysed	Rotameric	Outliers	Percentiles	
1	A	362/363 (100%)	307 (85%)	55 (15%)	4	7
1	B	360/363 (99%)	294 (82%)	66 (18%)	2	4
All	All	722/726 (99%)	601 (83%)	121 (17%)	3	5

All (121) residues with a non-rotameric sidechain are listed below:

Mol	Chain	Res	Type
1	A	1(B)	SER
1	A	1	MET
1	A	3	ASP
1	A	18	LEU
1	A	27	LYS
1	A	48	THR
1	A	68	SER
1	A	82	TYR

Continued on next page...

Continued from previous page...

Mol	Chain	Res	Type
1	A	86	SER
1	A	94	GLN
1	A	101	ILE
1	A	106	LYS
1	A	108	GLU
1	A	111	ARG
1	A	118	SER
1	A	124	LYS
1	A	125	LYS
1	A	138	LEU
1	A	140	ASP
1	A	141	ASP
1	A	142	MET
1	A	144	LYS
1	A	157	ILE
1	A	159	LYS
1	A	161	SER
1	A	170	ARG
1	A	177	GLU
1	A	180	GLN
1	A	184	MET
1	A	186	ARG
1	A	193	PHE
1	A	202	LYS
1	A	205	GLU
1	A	232	MET
1	A	237	GLN
1	A	248	ILE
1	A	251	GLU
1	A	252	LEU
1	A	254	ARG
1	A	259	ARG
1	A	262	LYS
1	A	278	LEU
1	A	293	ILE
1	A	326	GLU
1	A	340	ASN
1	A	345	ASN
1	A	348	LEU
1	A	369	SER
1	A	428	GLU
1	A	431	GLN

Continued on next page...

Continued from previous page...

Mol	Chain	Res	Type
1	A	442	LYS
1	A	443	LYS
1	A	444	LEU
1	A	446	LEU
1	A	447	GLN
1	B	3	ASP
1	B	4	LYS
1	B	5	ILE
1	B	37	ARG
1	B	48	THR
1	B	68	SER
1	B	82	TYR
1	B	86	SER
1	B	94	GLN
1	B	97	ARG
1	B	103	ILE
1	B	111	ARG
1	B	120	ILE
1	B	124	LYS
1	B	138	LEU
1	B	140	ASP
1	B	142	MET
1	B	144	LYS
1	B	151	ARG
1	B	152	ILE
1	B	157	ILE
1	B	158	ILE
1	B	161	SER
1	B	167	ARG
1	B	170	ARG
1	B	173	ARG
1	B	177	GLU
1	B	178	LEU
1	B	180	GLN
1	B	184	MET
1	B	186	ARG
1	B	193	PHE
1	B	198	VAL
1	B	200	MET
1	B	202	LYS
1	B	205	GLU
1	B	219	GLN

Continued on next page...

Continued from previous page...

Mol	Chain	Res	Type
1	B	225	LEU
1	B	231	SER
1	B	235	ARG
1	B	249	THR
1	B	251	GLU
1	B	252	LEU
1	B	259	ARG
1	B	262	LYS
1	B	266	ASP
1	B	278	LEU
1	B	281	ASN
1	B	288	LYS
1	B	289	MET
1	B	292	ARG
1	B	294	GLN
1	B	308	LEU
1	B	310	LYS
1	B	322	SER
1	B	323	ILE
1	B	324	LYS
1	B	326	GLU
1	B	353	LYS
1	B	399	ILE
1	B	423	ARG
1	B	431	GLN
1	B	435	THR
1	B	443	LYS
1	B	444	LEU
1	B	447	GLN

Some sidechains can be flipped to improve hydrogen bonding and reduce clashes. All (19) such sidechains are listed below:

Mol	Chain	Res	Type
1	A	1(A)	HIS
1	A	206	ASN
1	A	294	GLN
1	A	319	GLN
1	A	340	ASN
1	A	345	ASN
1	A	370	HIS
1	A	447	GLN
1	B	145	ASN

Continued on next page...

Continued from previous page...

Mol	Chain	Res	Type
1	B	180	GLN
1	B	209	HIS
1	B	294	GLN
1	B	340	ASN
1	B	345	ASN
1	B	358	HIS
1	B	370	HIS
1	B	404	ASN
1	B	426	ASN
1	B	431	GLN

5.3.3 RNA ⓘ

There are no RNA chains in this entry.

5.4 Non-standard residues in protein, DNA, RNA chains ⓘ

There are no non-standard protein/DNA/RNA residues in this entry.

5.5 Carbohydrates ⓘ

There are no carbohydrates in this entry.

5.6 Ligand geometry ⓘ

2 ligands are modelled in this entry.

In the following table, the Counts columns list the number of bonds (or angles) for which Mogul statistics could be retrieved, the number of bonds (or angles) that are observed in the model and the number of bonds (or angles) that are defined in the chemical component dictionary. The Link column lists molecule types, if any, to which the group is linked. The Z score for a bond length (or angle) is the number of standard deviations the observed value is removed from the expected value. A bond length (or angle) with $|Z| > 2$ is considered an outlier worth inspection. RMSZ is the root-mean-square of all Z scores of the bond lengths (or angles).

Mol	Type	Chain	Res	Link	Bond lengths			Bond angles		
					Counts	RMSZ	$\# Z > 2$	Counts	RMSZ	$\# Z > 2$
2	ATP	A	1000	-	33,33,33	1.98	4 (12%)	52,52,52	1.44	5 (9%)
2	ATP	B	1001	-	33,33,33	1.86	5 (15%)	52,52,52	1.42	6 (11%)

In the following table, the Chirals column lists the number of chiral outliers, the number of chiral centers analysed, the number of these observed in the model and the number defined in the chemical component dictionary. Similar counts are reported in the Torsion and Rings columns. '-' means no outliers of that kind were identified.

Mol	Type	Chain	Res	Link	Chirals	Torsions	Rings
2	ATP	A	1000	-	-	0/22/38/38	0/1/3/3
2	ATP	B	1001	-	-	0/22/38/38	0/1/3/3

All (9) bond length outliers are listed below:

Mol	Chain	Res	Type	Atoms	Z	Observed(Å)	Ideal(Å)
2	A	1000	ATP	C2'-C3'	-8.38	1.30	1.53
2	B	1001	ATP	C2'-C3'	-7.87	1.31	1.53
2	A	1000	ATP	PA-O3A	-3.98	1.52	1.59
2	B	1001	ATP	PB-O3A	3.40	1.66	1.59
2	A	1000	ATP	PG-O3B	-3.36	1.54	1.60
2	B	1001	ATP	PG-O3B	-3.00	1.55	1.60
2	A	1000	ATP	C2'-C1'	-2.77	1.49	1.53
2	B	1001	ATP	C2'-C1'	-2.73	1.49	1.53
2	B	1001	ATP	PA-O3A	-2.10	1.56	1.59

All (11) bond angle outliers are listed below:

Mol	Chain	Res	Type	Atoms	Z	Observed(°)	Ideal(°)
2	A	1000	ATP	C3'-C2'-C1'	4.85	108.50	100.91
2	B	1001	ATP	C3'-C2'-C1'	4.75	108.34	100.91
2	B	1001	ATP	O4'-C1'-N9	4.57	112.69	108.44
2	A	1000	ATP	O3A-PB-O3B	-4.39	92.73	101.66
2	B	1001	ATP	C2'-C3'-C4'	3.11	108.85	102.65
2	A	1000	ATP	O4'-C1'-C2'	-3.09	102.03	106.77
2	B	1001	ATP	O3A-PB-O3B	-3.06	95.44	101.66
2	A	1000	ATP	C8-N9-C4	-2.43	105.04	106.90
2	A	1000	ATP	O4'-C4'-C3'	-2.18	100.75	105.17
2	B	1001	ATP	C8-N9-C1'	2.15	130.62	126.38
2	B	1001	ATP	C1'-N9-C4	-2.08	123.04	126.64

There are no chirality outliers.

There are no torsion outliers.

There are no ring outliers.

5.7 Other polymers ⓘ

There are no such residues in this entry.

5.8 Polymer linkage issues

There are no chain breaks in this entry.

6 Fit of model and data ⓘ

6.1 Protein, DNA and RNA chains ⓘ

EDS was not executed - this section will therefore be empty.

6.2 Non-standard residues in protein, DNA, RNA chains ⓘ

EDS was not executed - this section will therefore be empty.

6.3 Carbohydrates ⓘ

EDS was not executed - this section will therefore be empty.

6.4 Ligands ⓘ

EDS was not executed - this section will therefore be empty.

6.5 Other polymers ⓘ

EDS was not executed - this section will therefore be empty.